

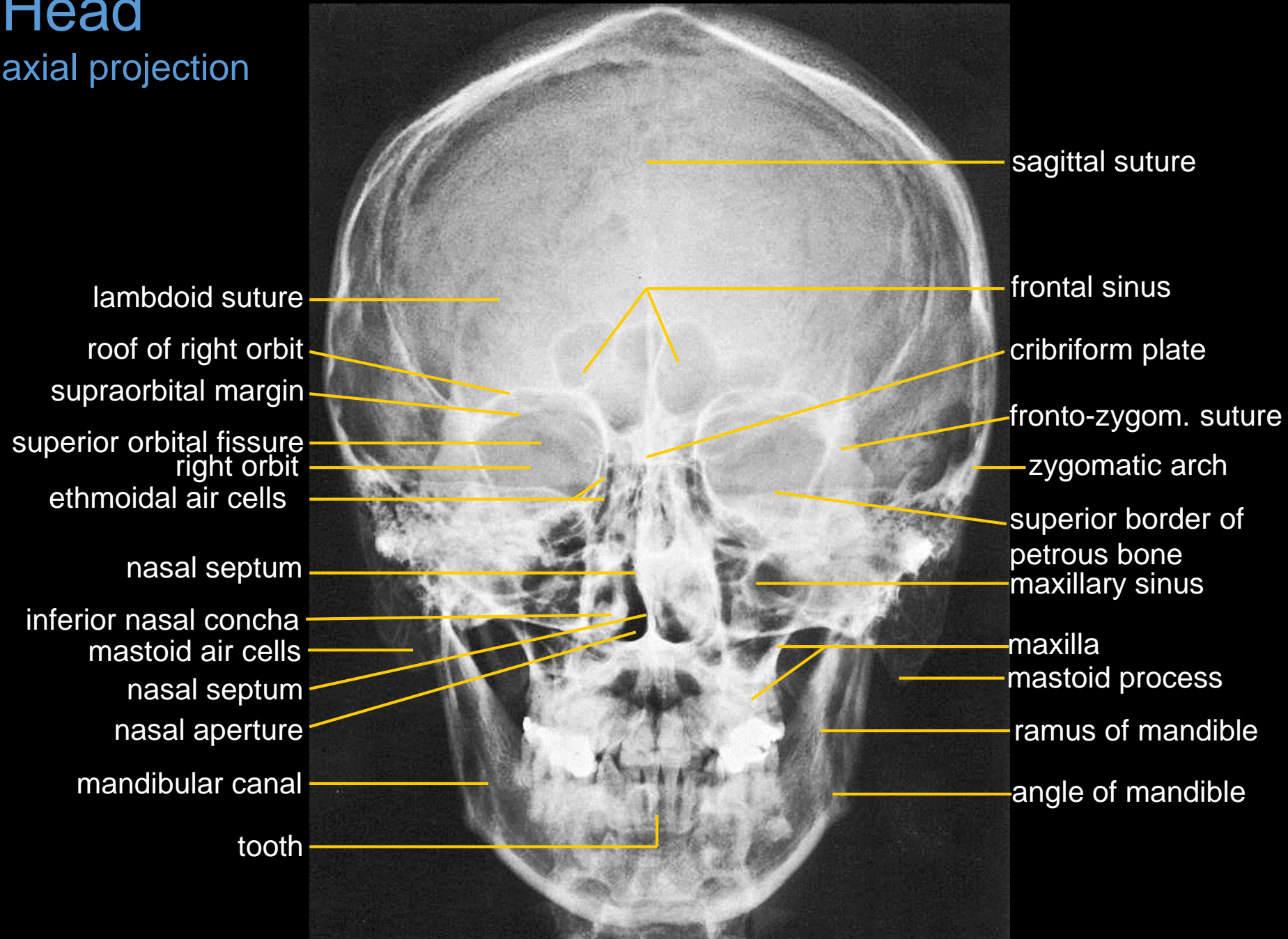
List of X-rays

1th semester - Dentistry

1. Head – axial and lateral projection
2. Cervical part of the spine – axial and lateral projection
3. Thoracic part of the spine – axial and lateral projection
4. Lumbar part of the spine – axial and lateral projection
5. Shoulder joint – axial projection
6. Elbow joint – axial and lateral projection
7. Wrist + hand (child) – axial projection
8. Wrist + hand (adult) – axial projection
9. Pelvis – axial projection
10. Knee joint – axial and lateral projection
11. Foot – dorsoplantar and lateral projection
12. Chest – axial projection

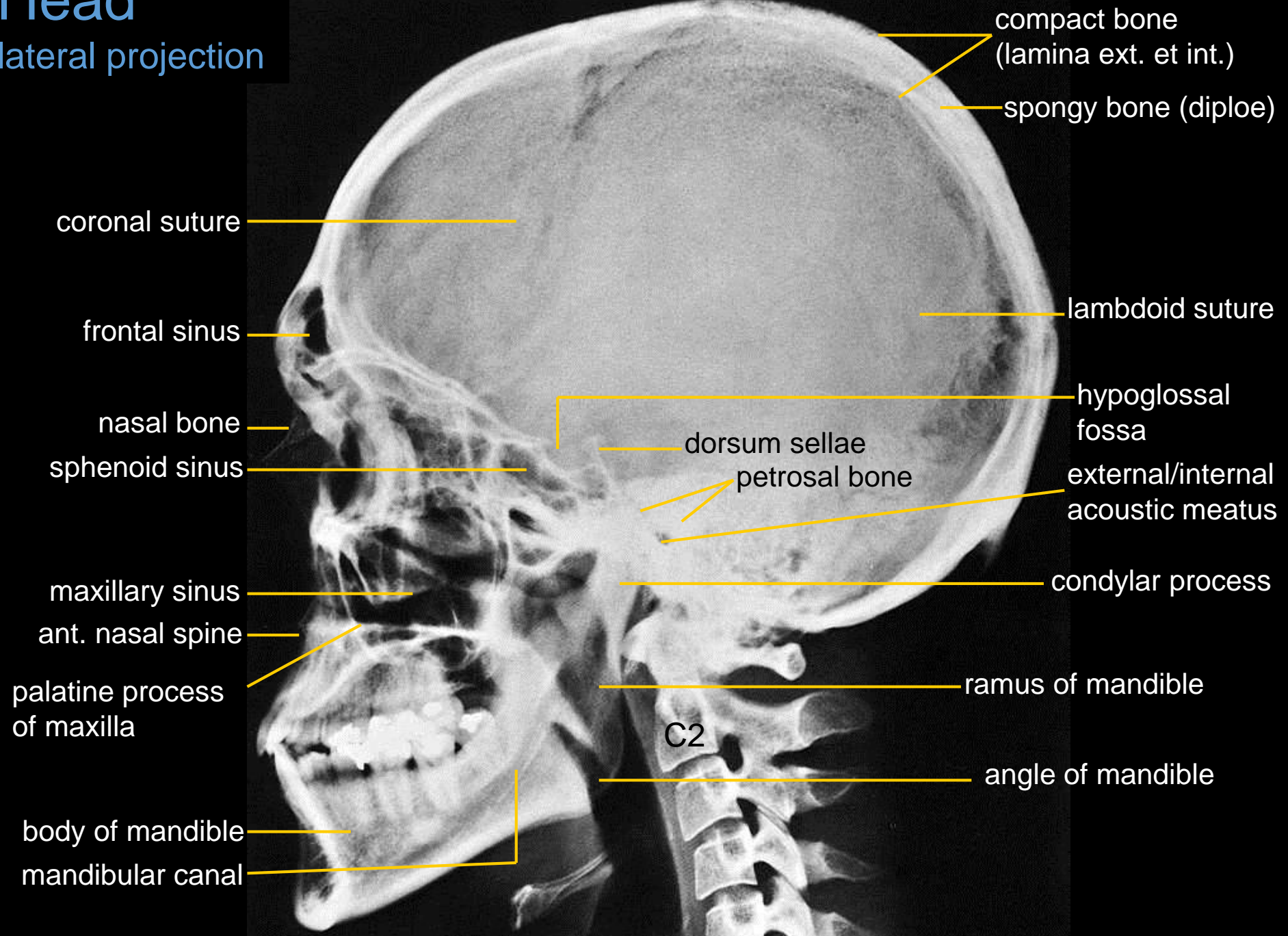
Head

axial projection



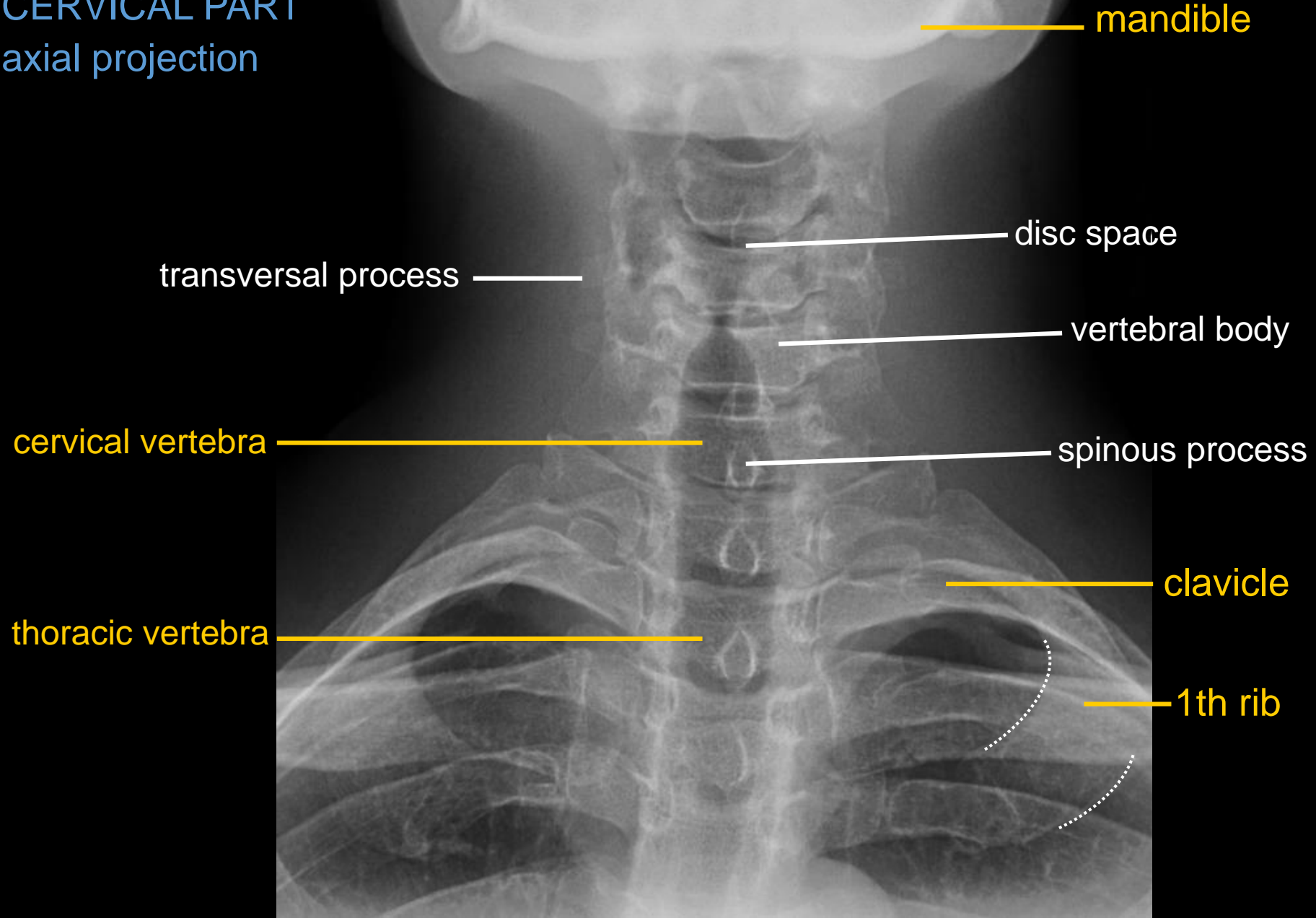
Head

lateral projection



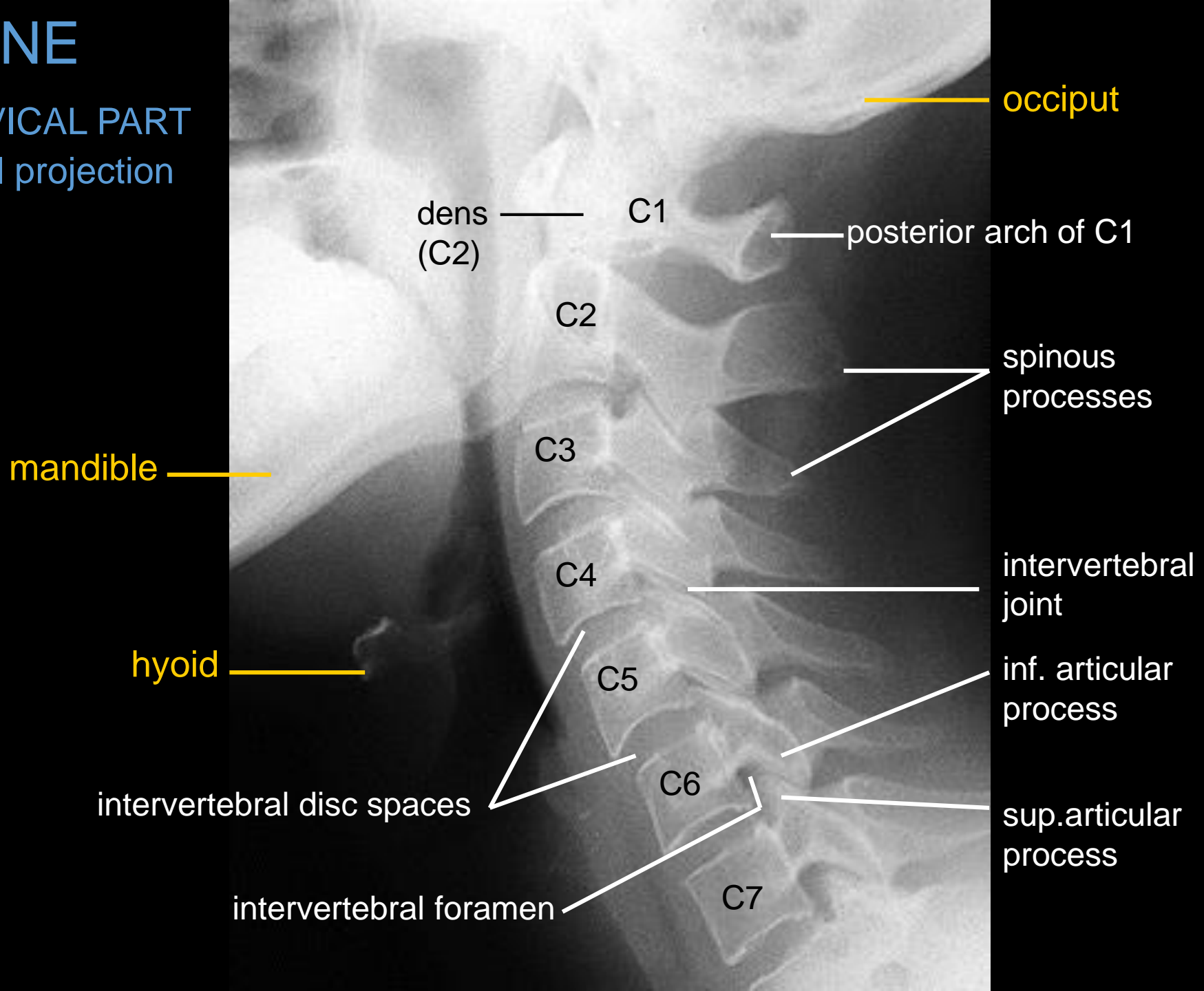
SPINE

CERVICAL PART
axial projection



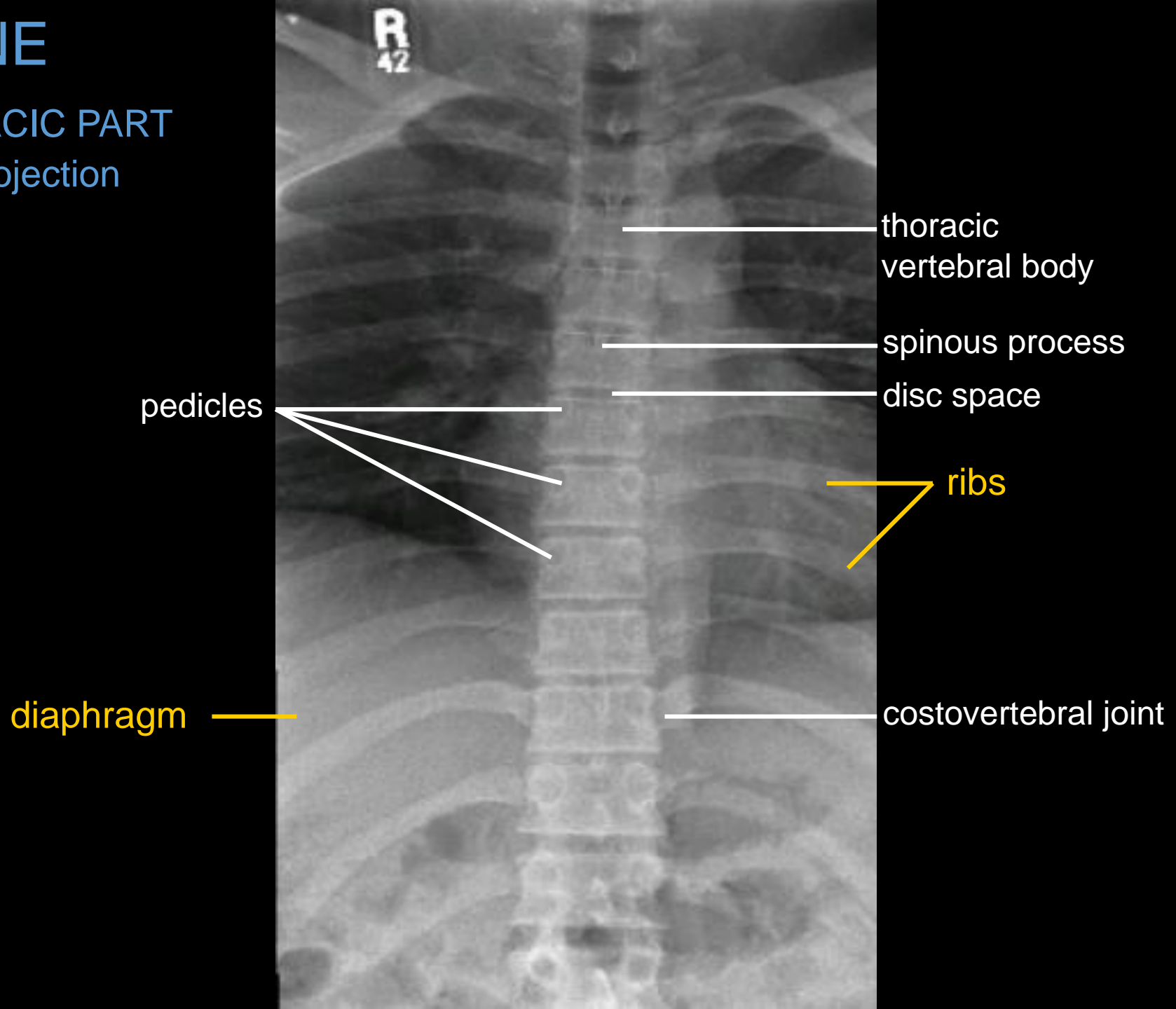
SPINE

CERVICAL PART
lateral projection



SPINE

THORACIC PART
axial projection



thoracic
vertebral body

spinous process

disc space

pedicles

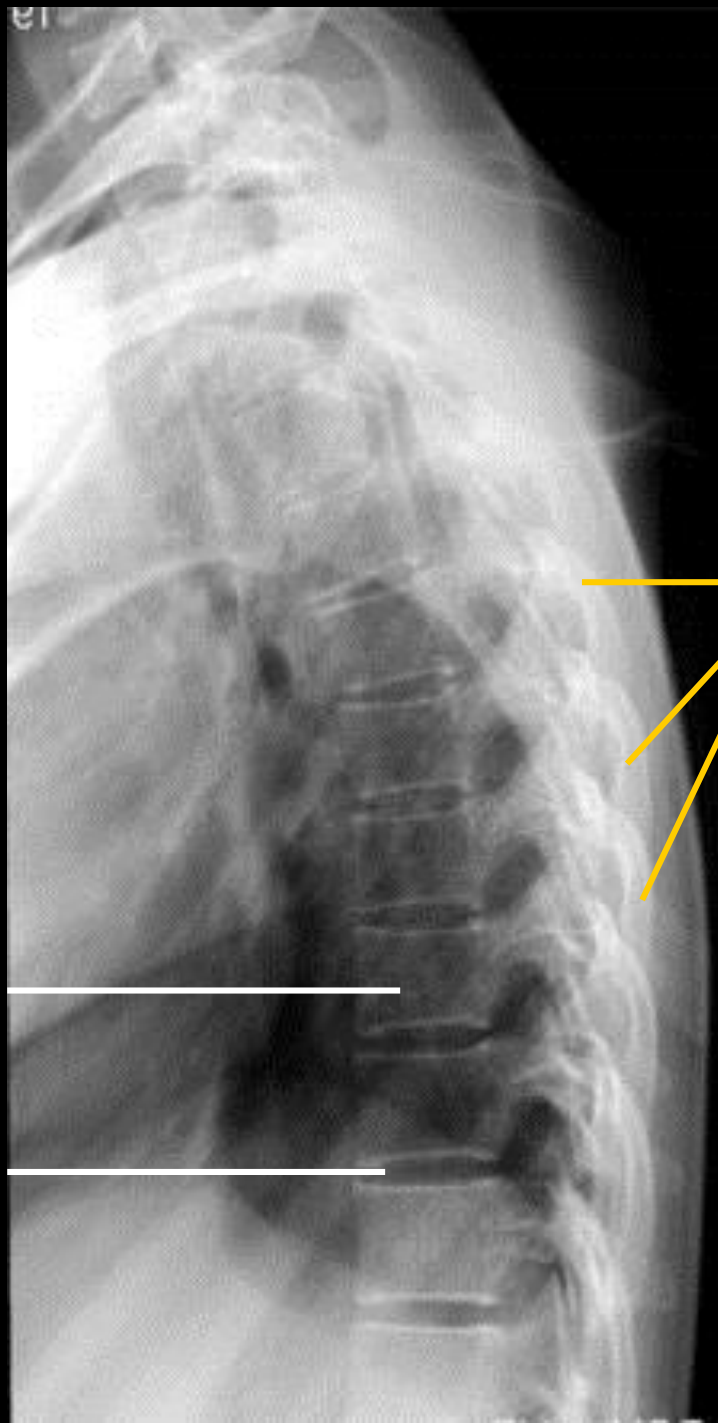
ribs

diaphragm

costovertebral joint

SPINE

THORACIC PART
lateral projection



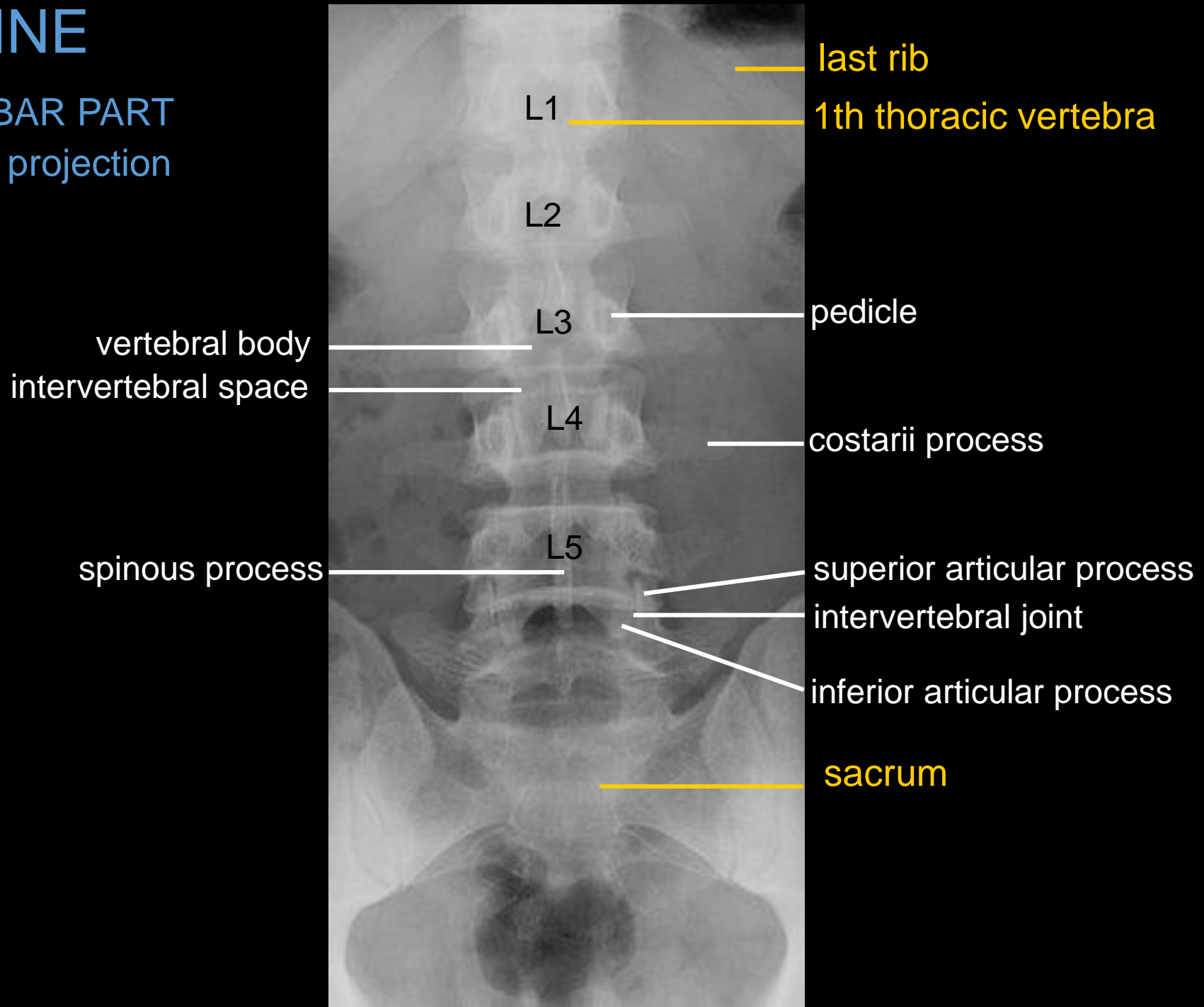
ribs

thoracic
vertebral body

intervertebral
disc space

SPINE

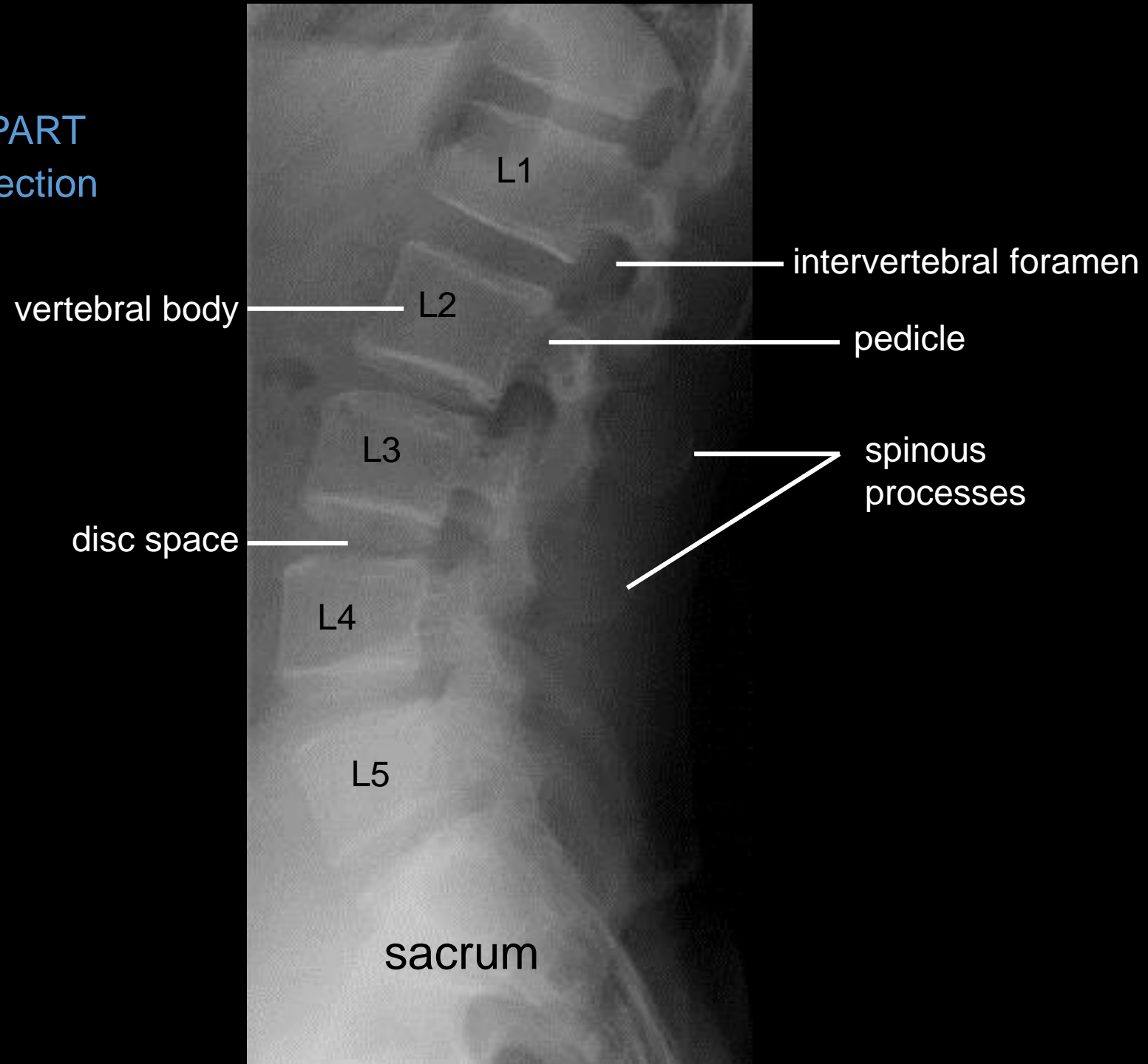
LUMBAR PART
axial projection



SPINE

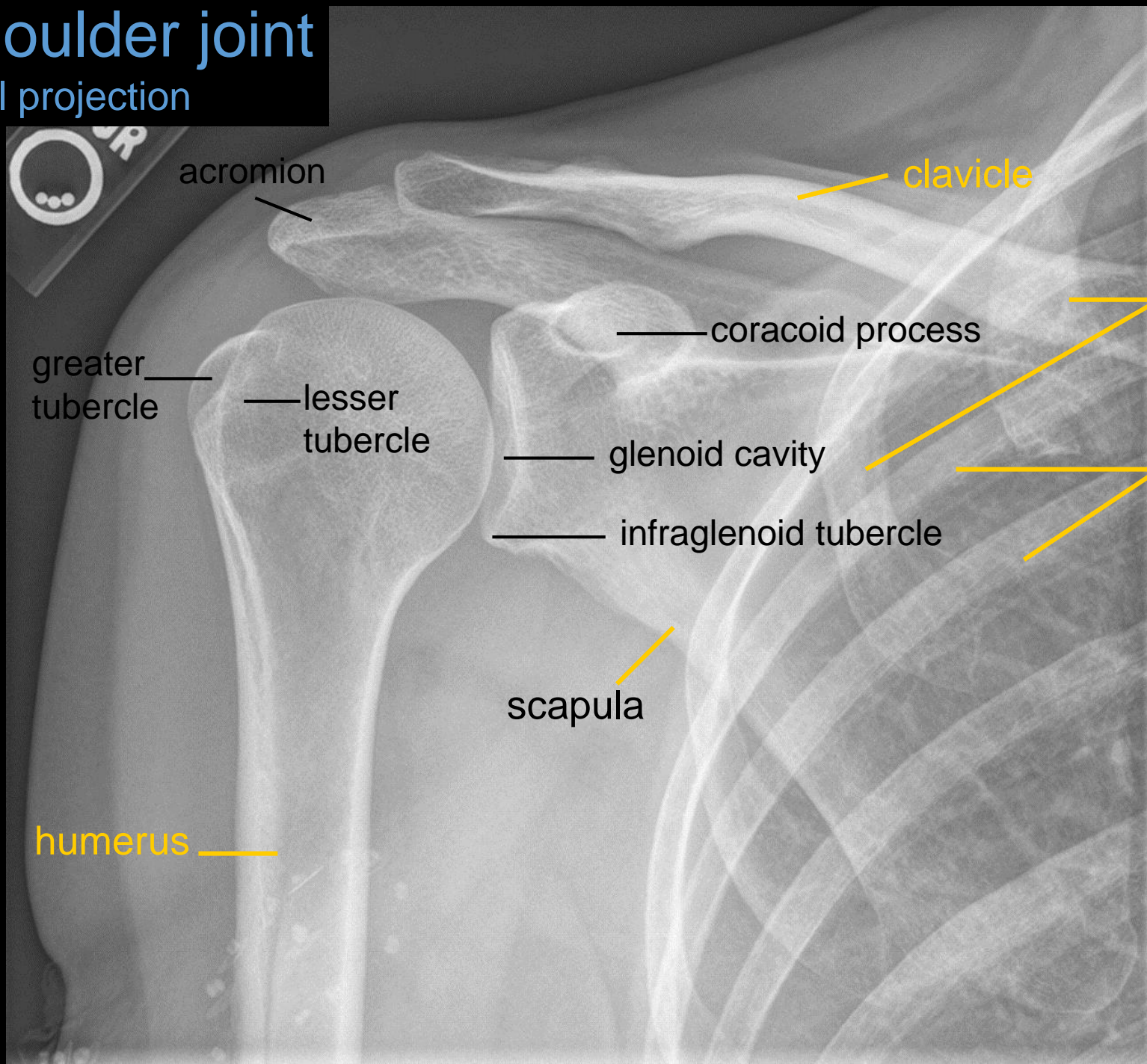
LUMBAR PART

lateral projection



Shoulder joint

axial projection



acromion

clavicle

greater tubercle

lesser tubercle

coracoid process

anterior ribs

glenoid cavity

posterior ribs

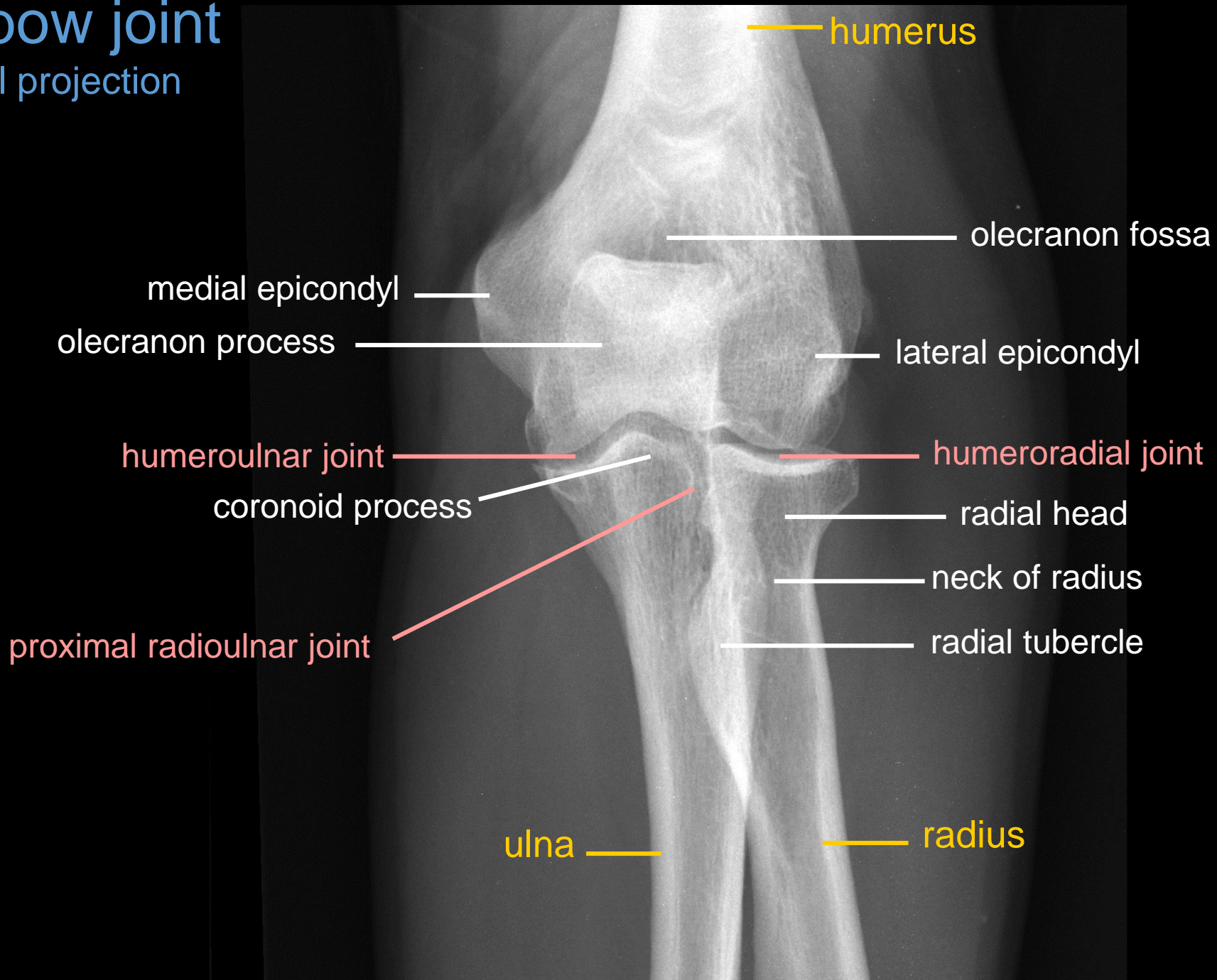
infraglenoid tubercle

scapula

humerus

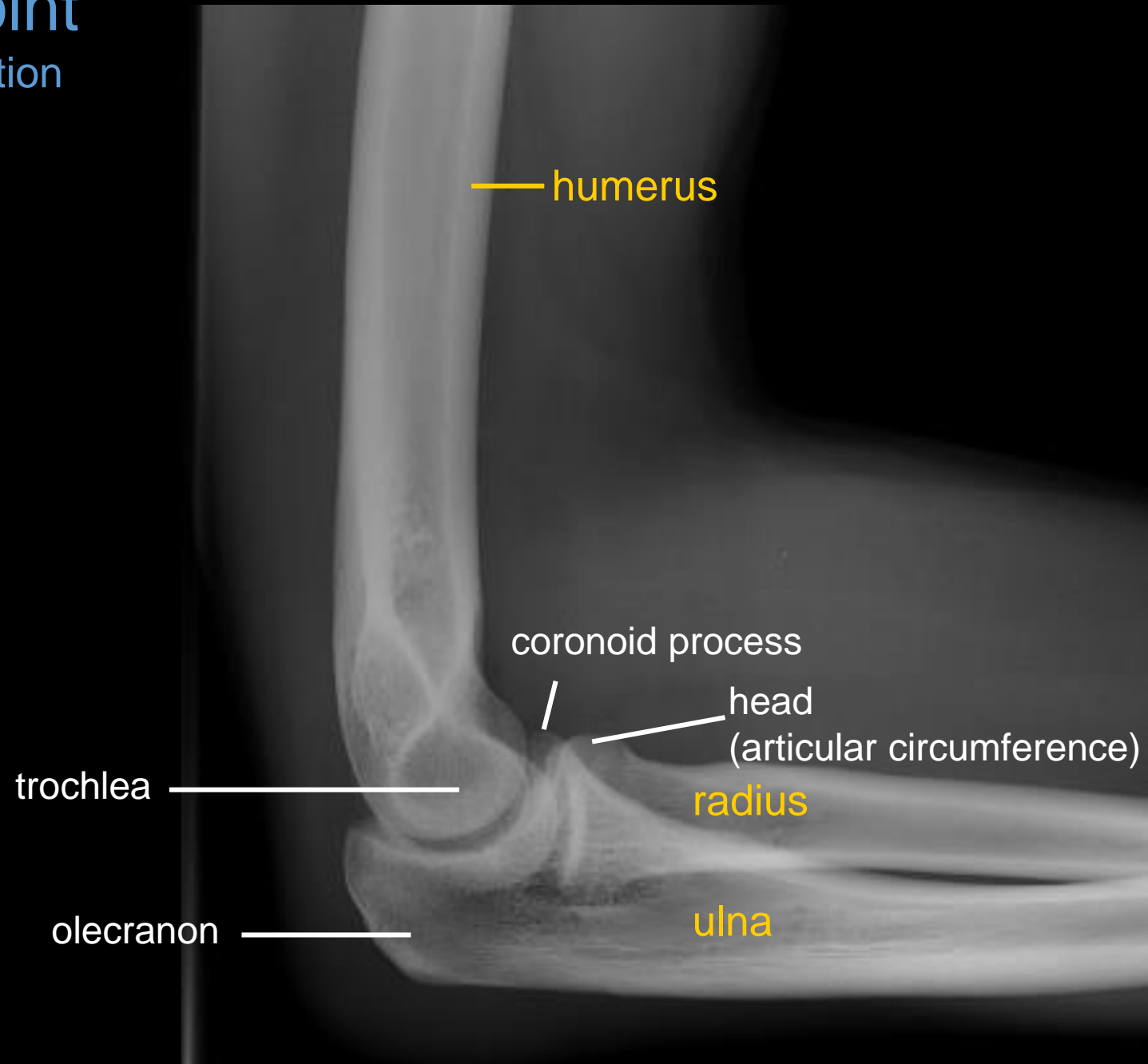
Elbow joint

axial projection



Elbow joint

lateral projection



Hand and wrist adult

phalanges

- distal
- middle
- proximal

- head
- body
- base

phalanges

sesamoid bone

metacarpals

- head
- body
- base

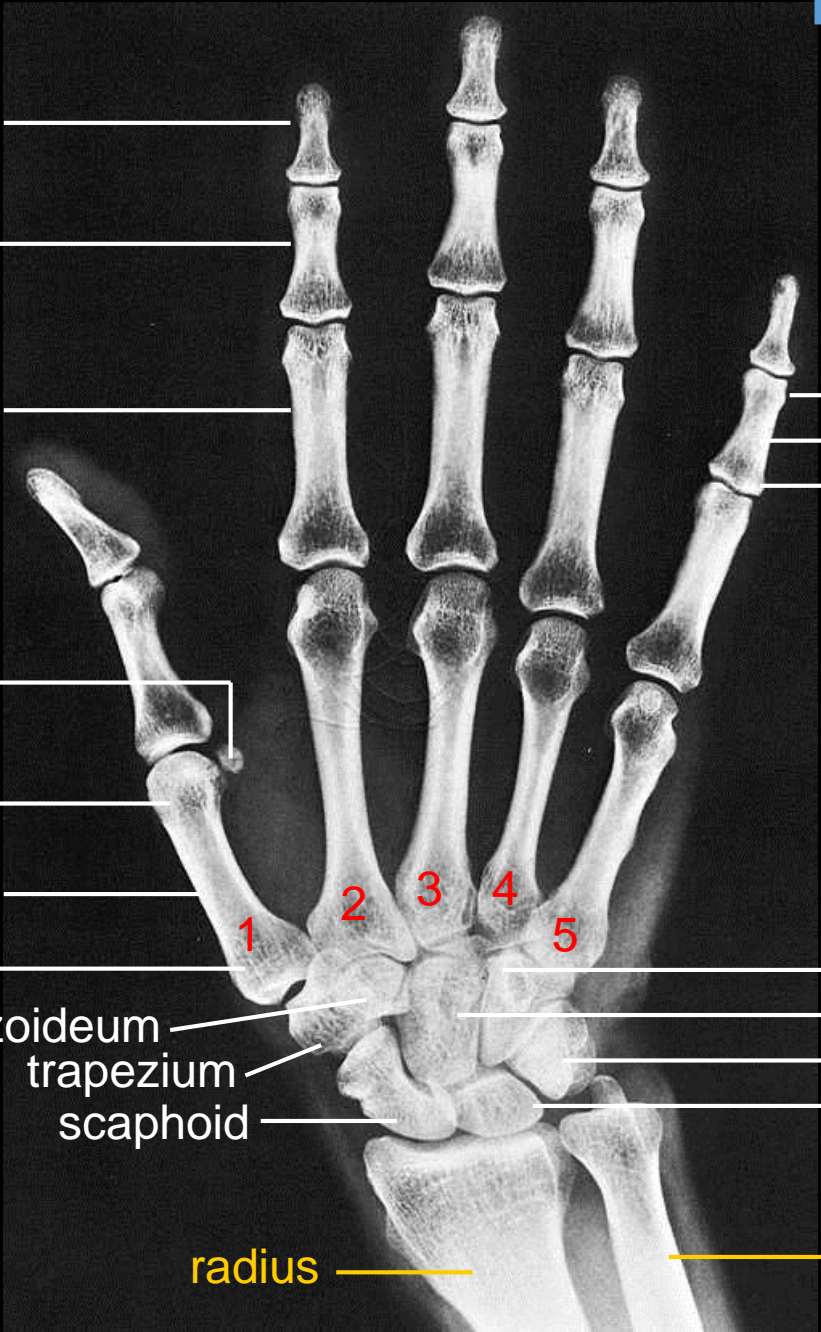
carpals

- trapezoideum
- trapezium
- scaphoid

- hamatum (+hamulus)
- capitatum
- triquetrum+pisiforme
- lunate

radius

ulna





Hand and wrist

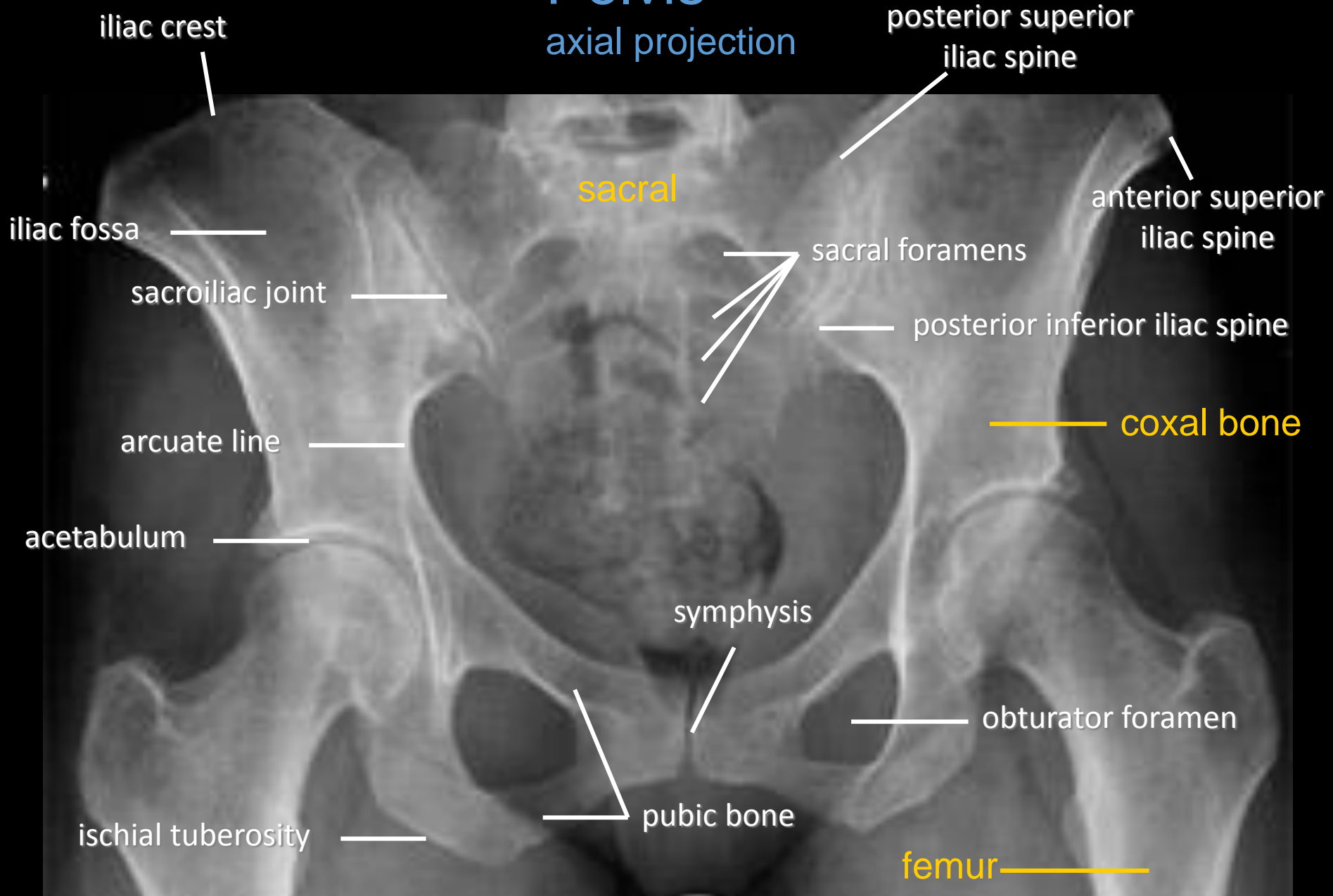
child

4,5 years old child

(4 carpal bones are ossificated)

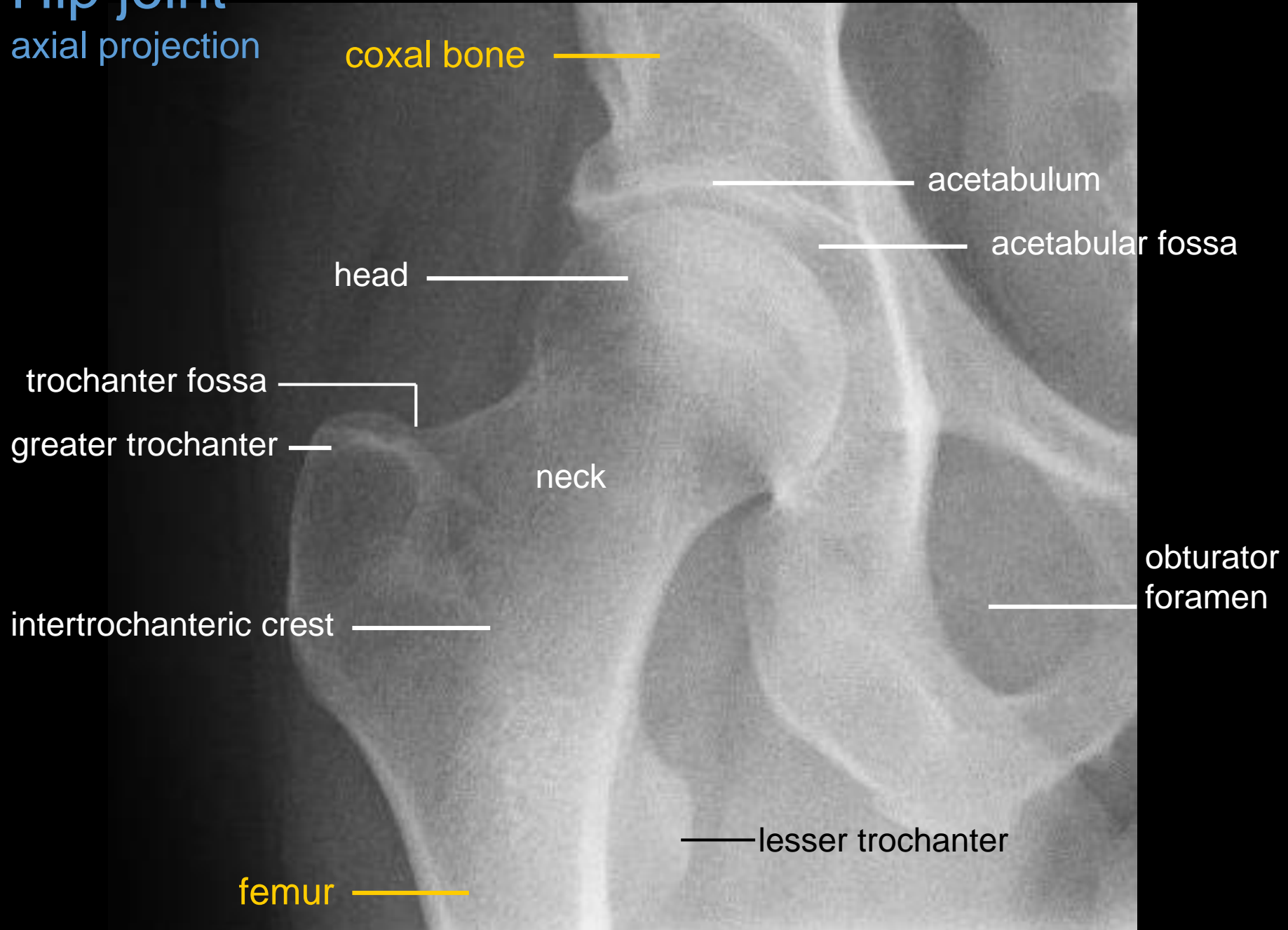
Pelvis

axial projection



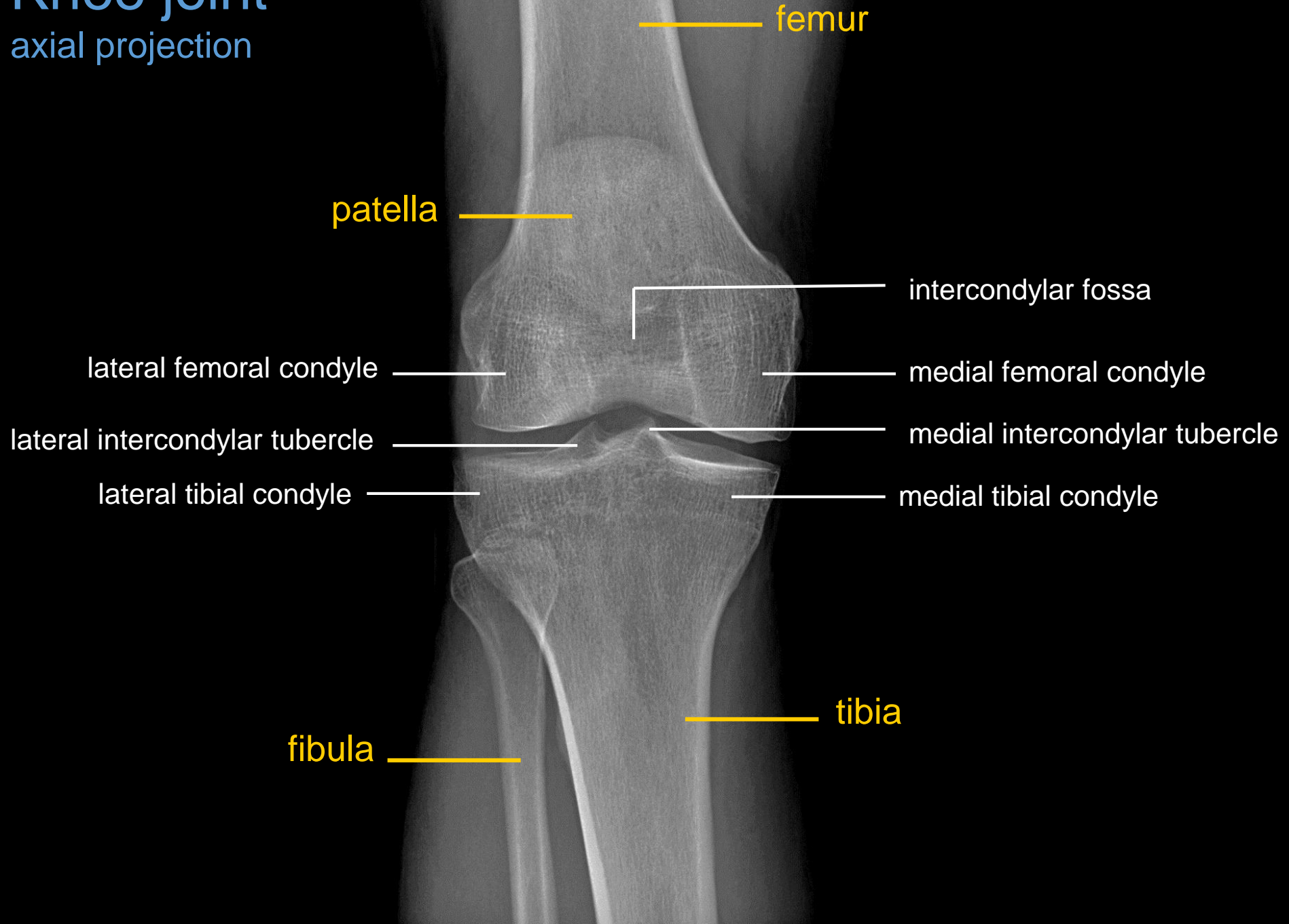
Hip joint

axial projection



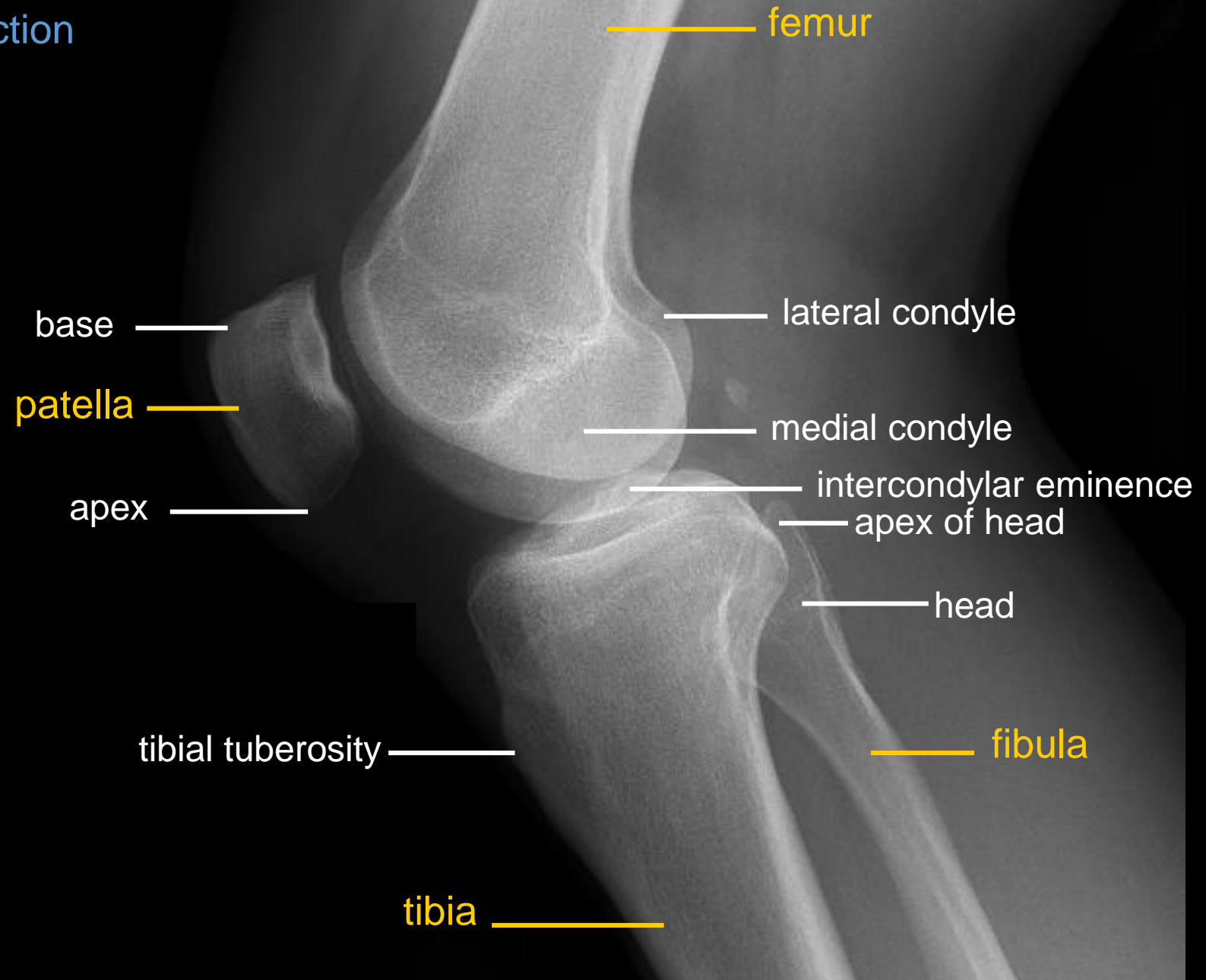
Knee joint

axial projection



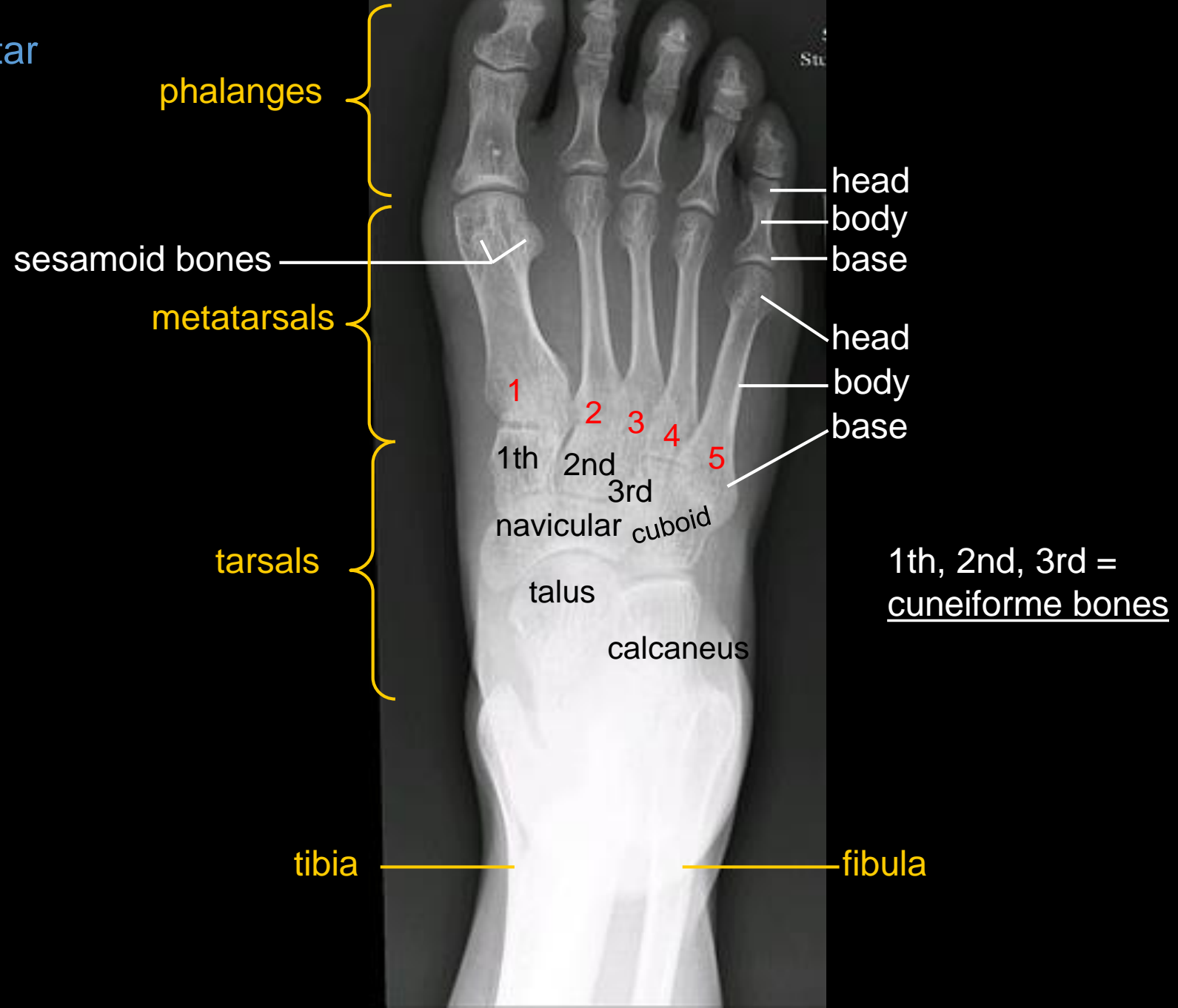
Knee joint

lateral projection



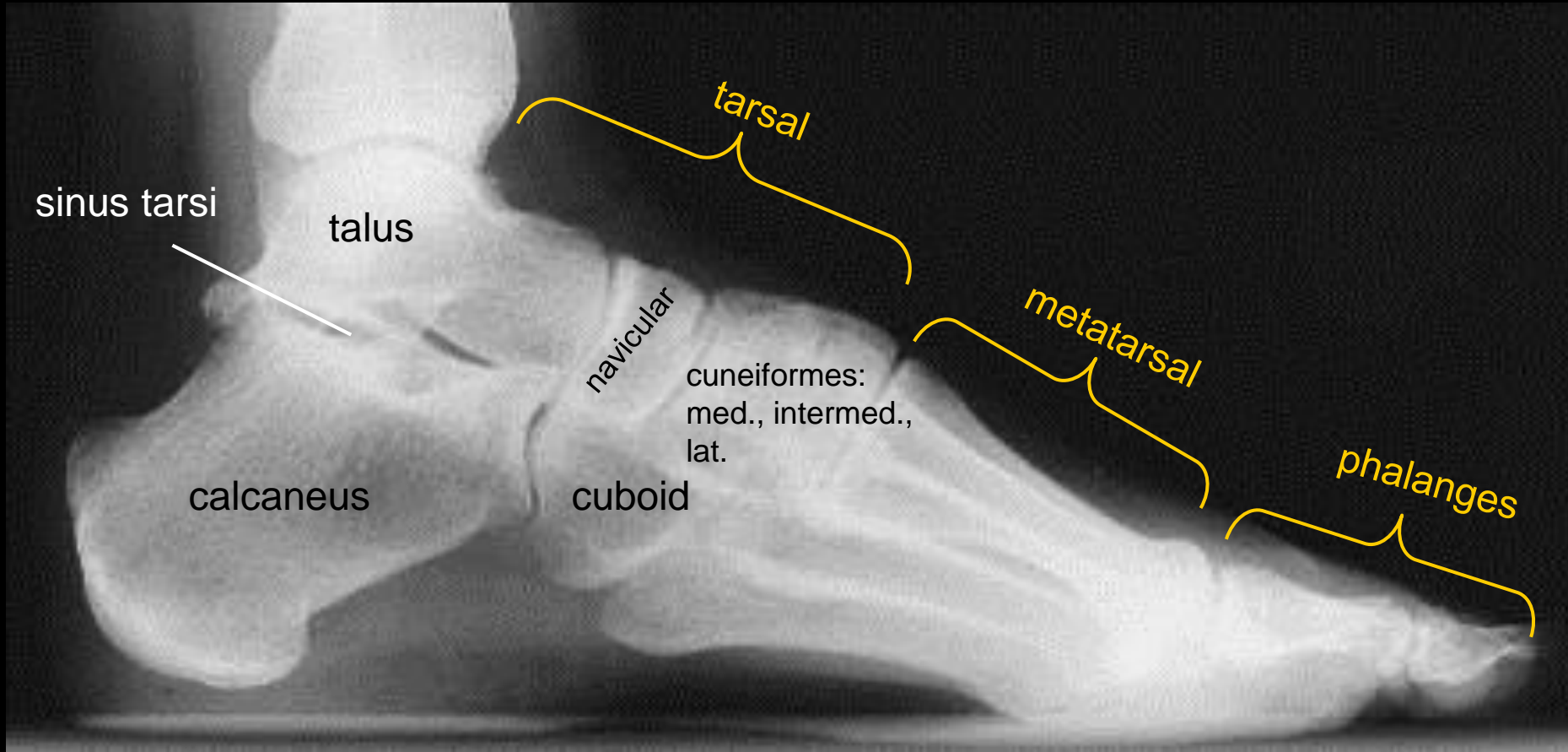
Foot

dorsoplantar
projection



Foot

lateral projection



Chest sagittal projection

