

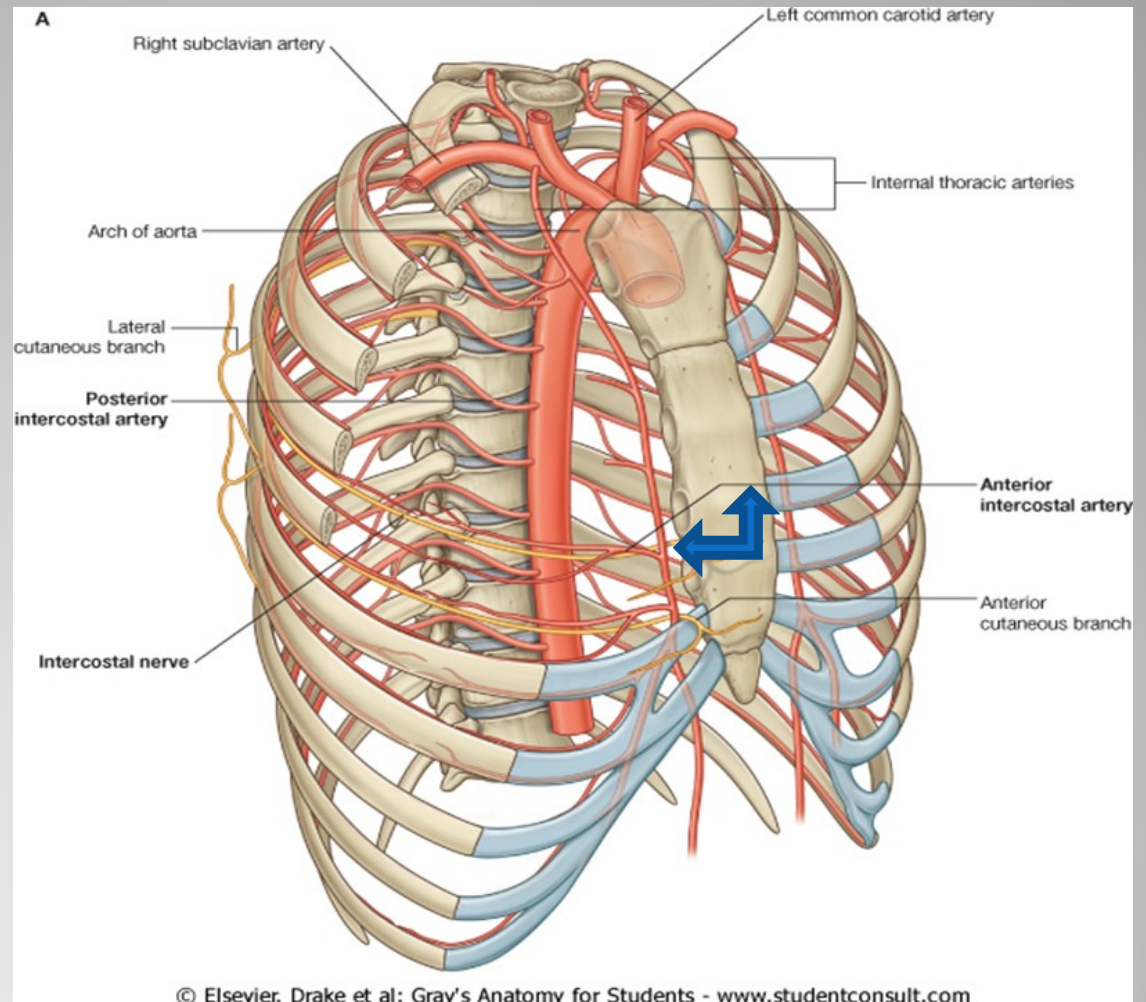
Questions

What is the form of an adjective put to a noun dependent on?

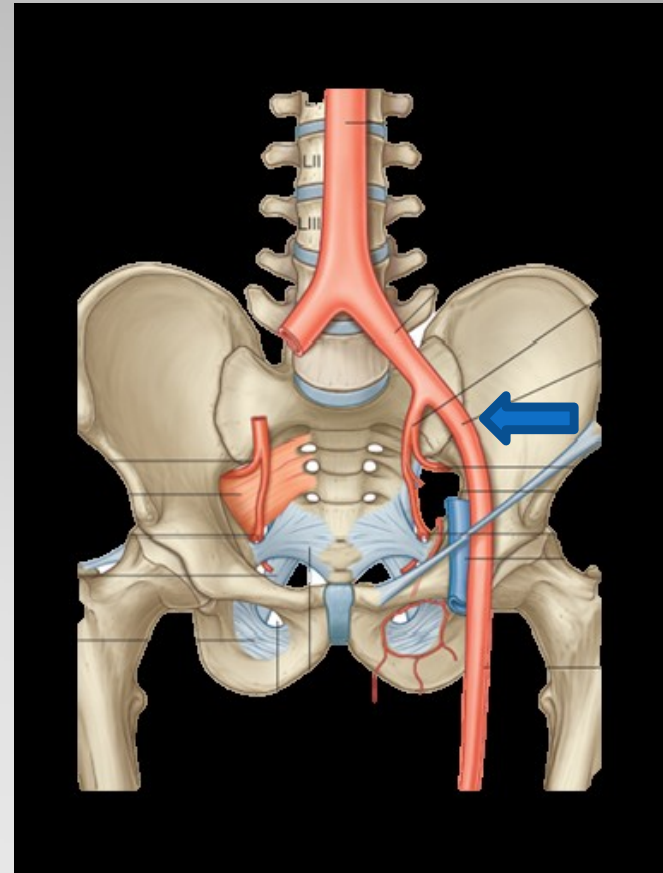
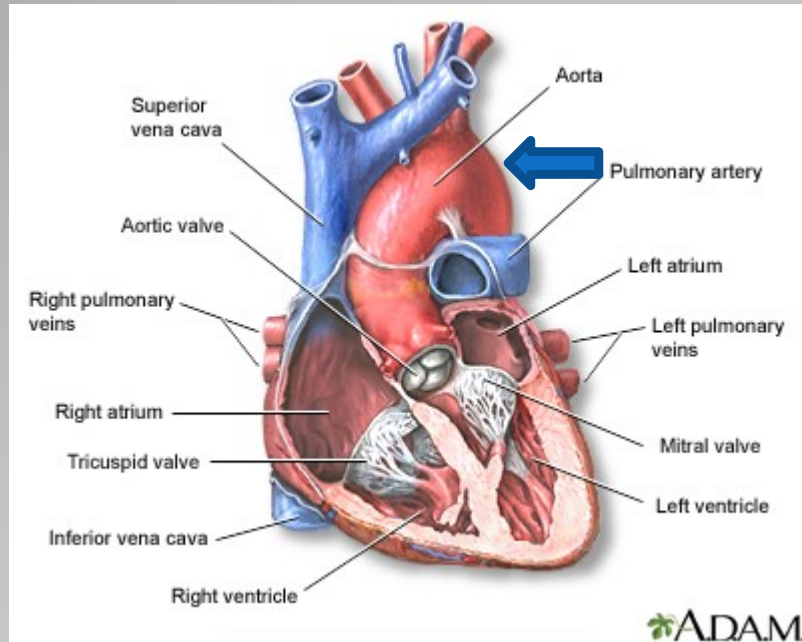
What are the endings of the adjectives?

How do we decline the adjectives like e.g. *magnus, a, um* (*liber, era, erum*)?

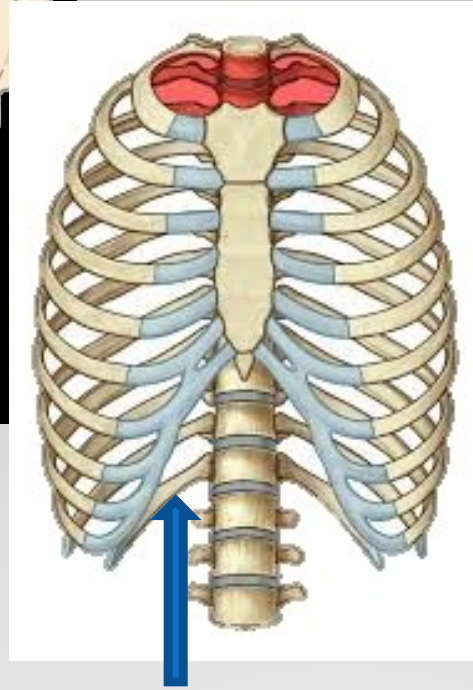
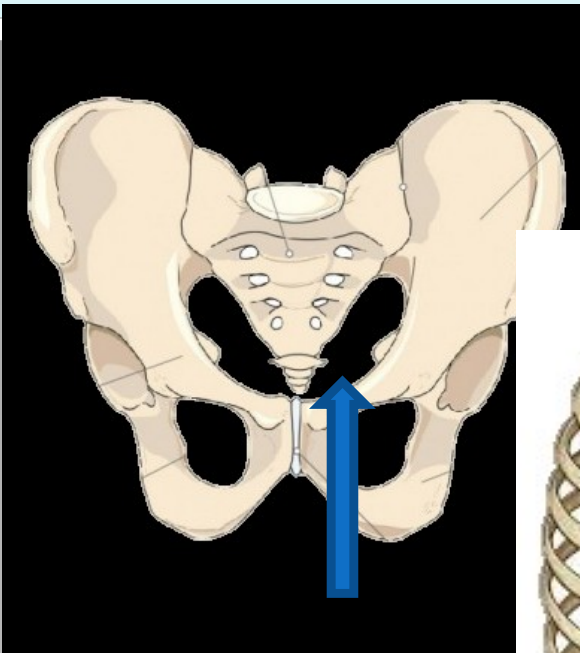
What prepositions are used with Accusative
Ablative
both?



internal thoracic artery?

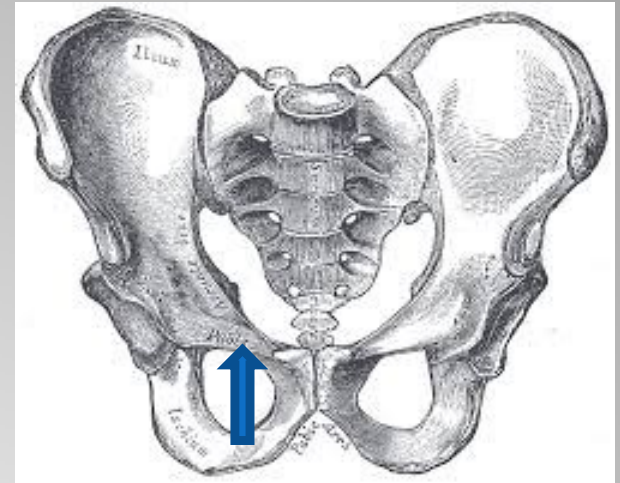
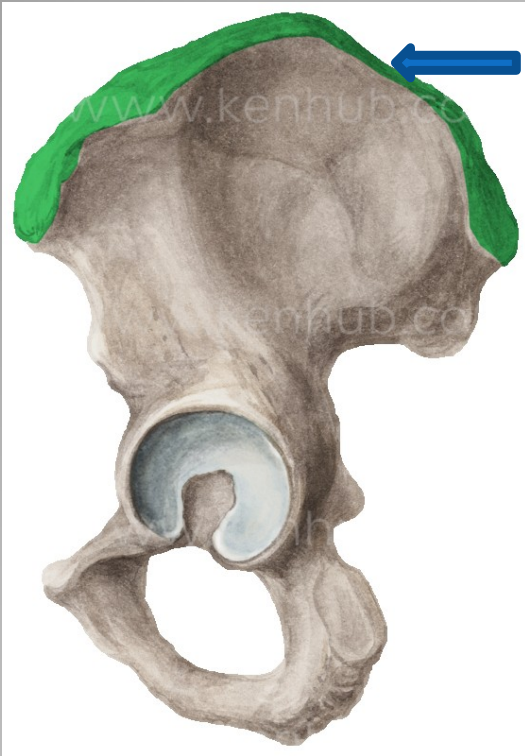


external iliac artery?
arch of aorta?

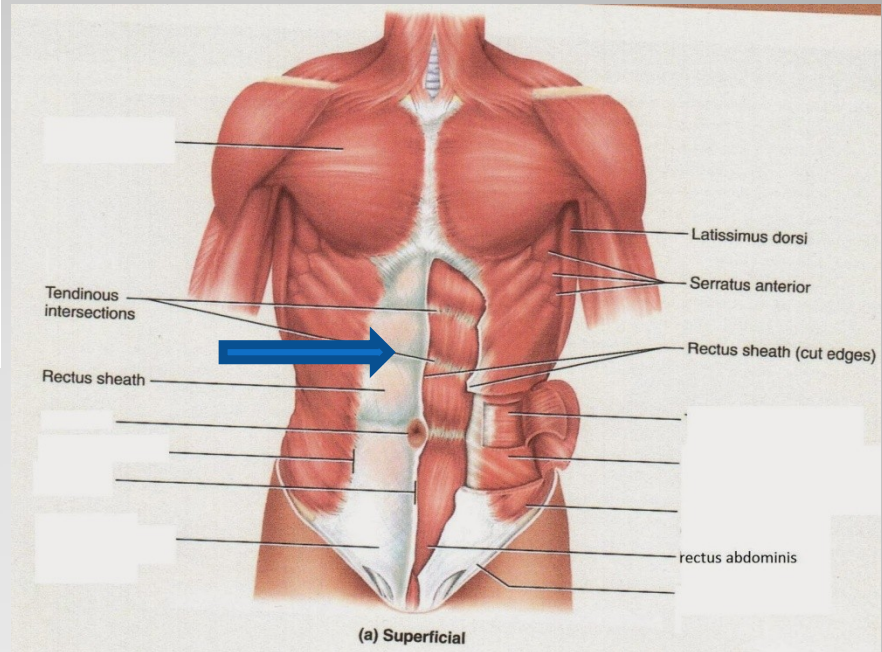
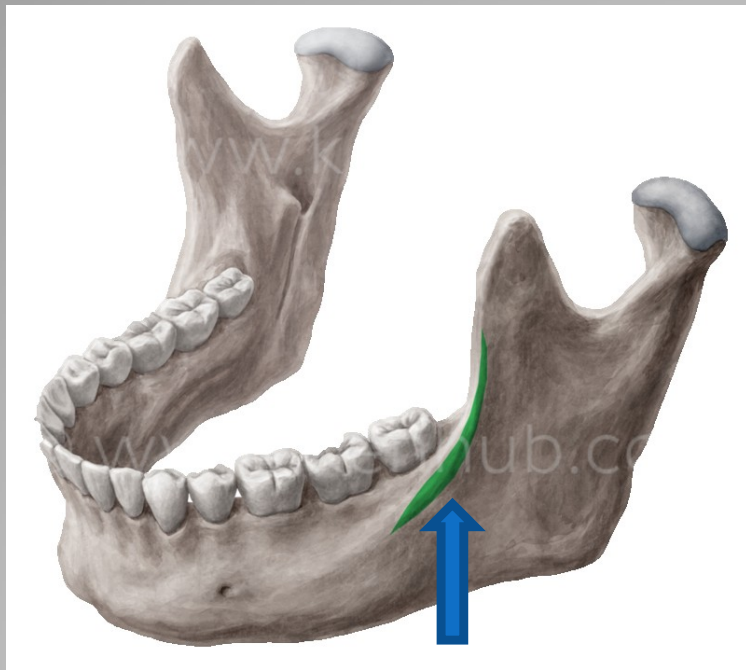


**aperture of pelvis?
thoracic aperture?**

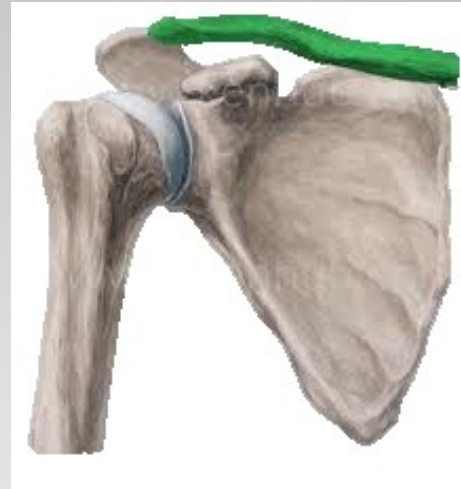
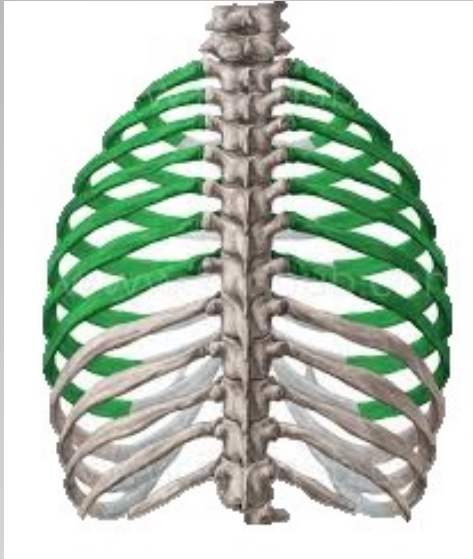
medial raphe?



iliac crest?
ridges of skin (dermal ridges)?
pubic crest?



**oblique line of lower jaw?
white line?**



**right tibial bone?
true ribs?**

**right collar bone?
left ulnar bone?**



left lower jaw?

right fibula?

spine of right shoulder blade?

thoracic vertebrae?

primus, a, um

secundus, a, um

tertius, a, um

quartus, a, um

quintus, a, um

sextus, a, um

septimus, a, um

octavus, a, um

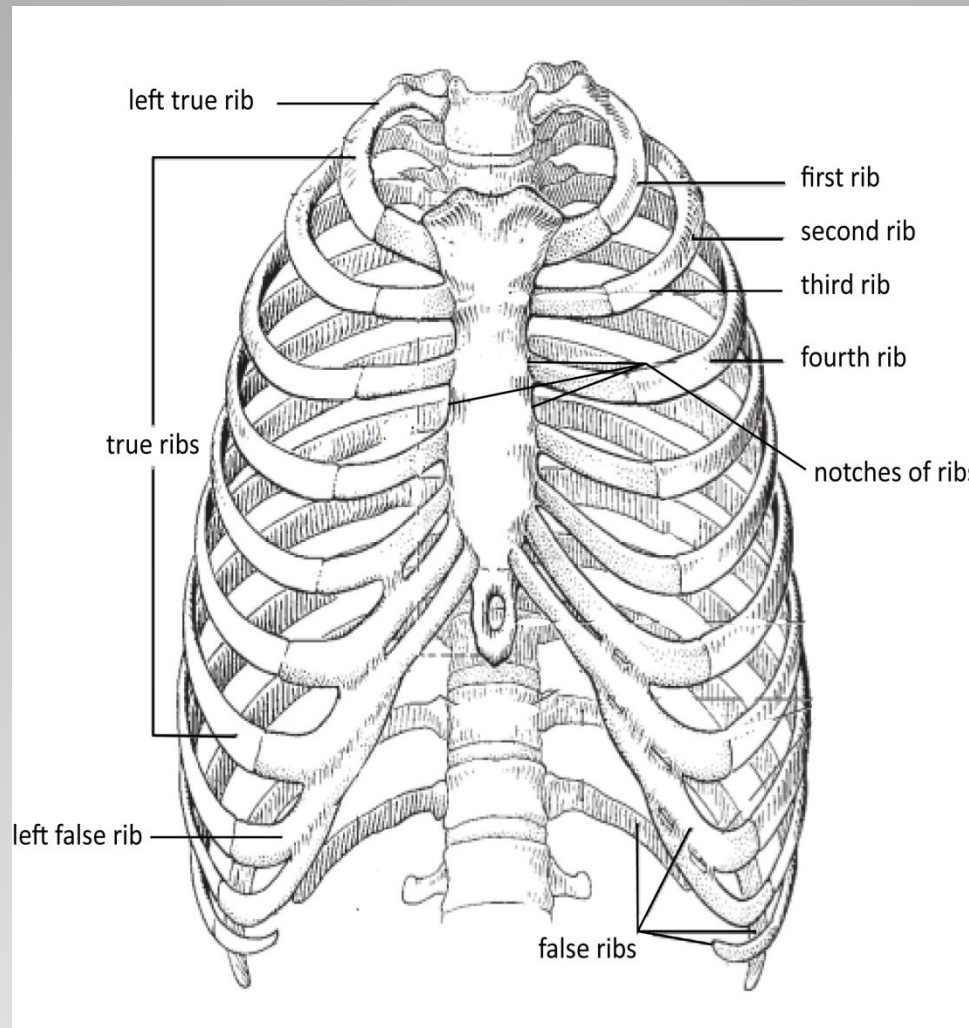
nonus, a, um

decimus, a, um

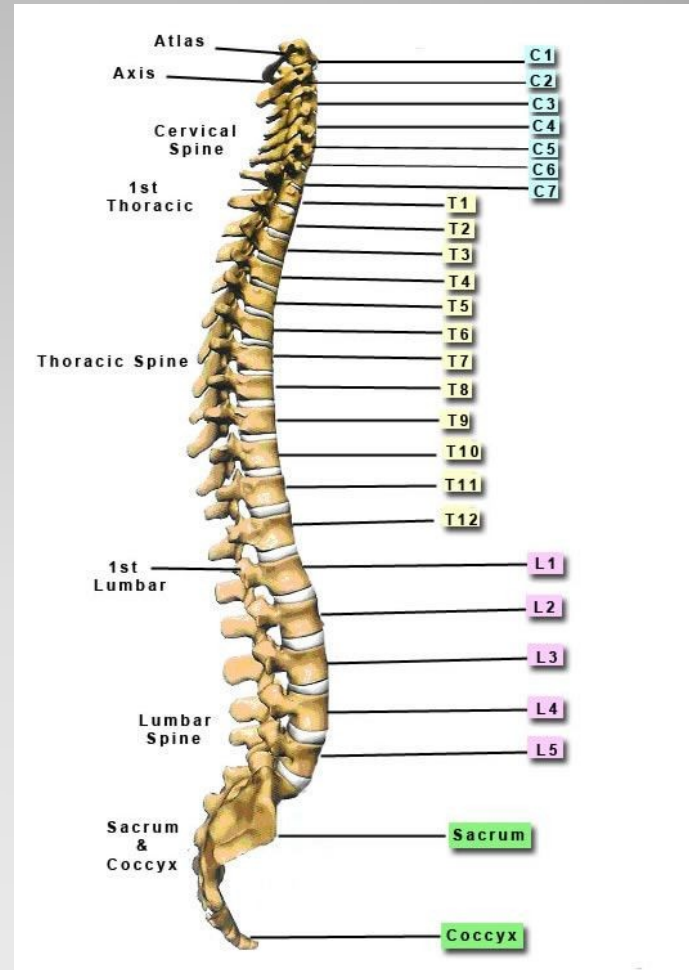
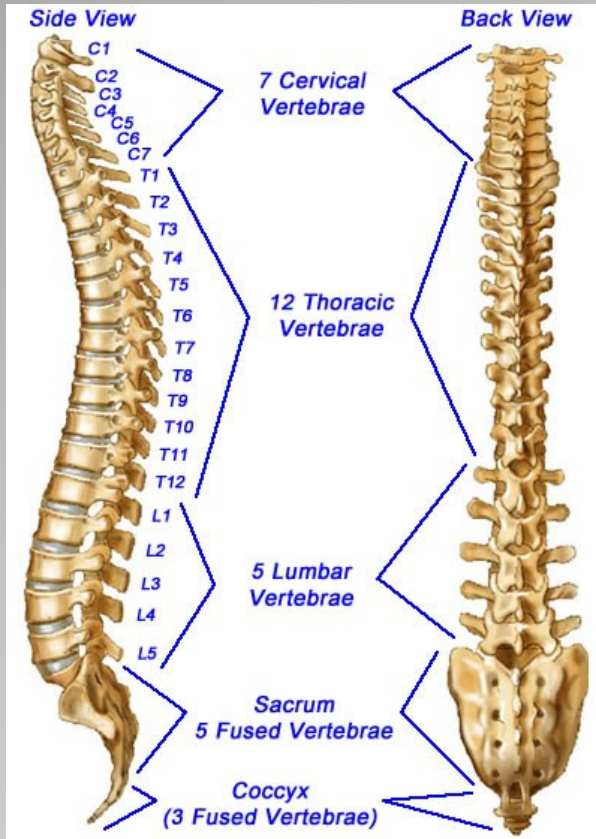
undecimus, a, um

duodecimus, a, um

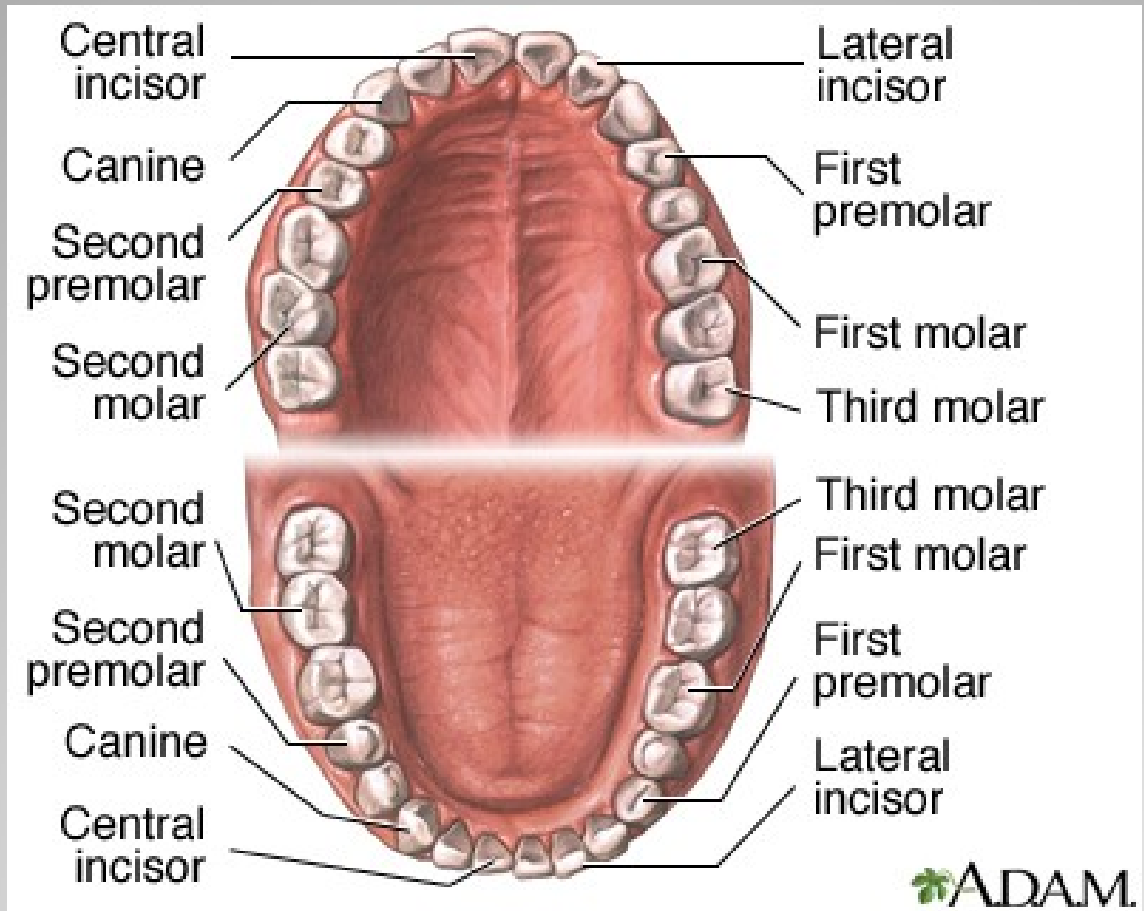
Ordinal numbers



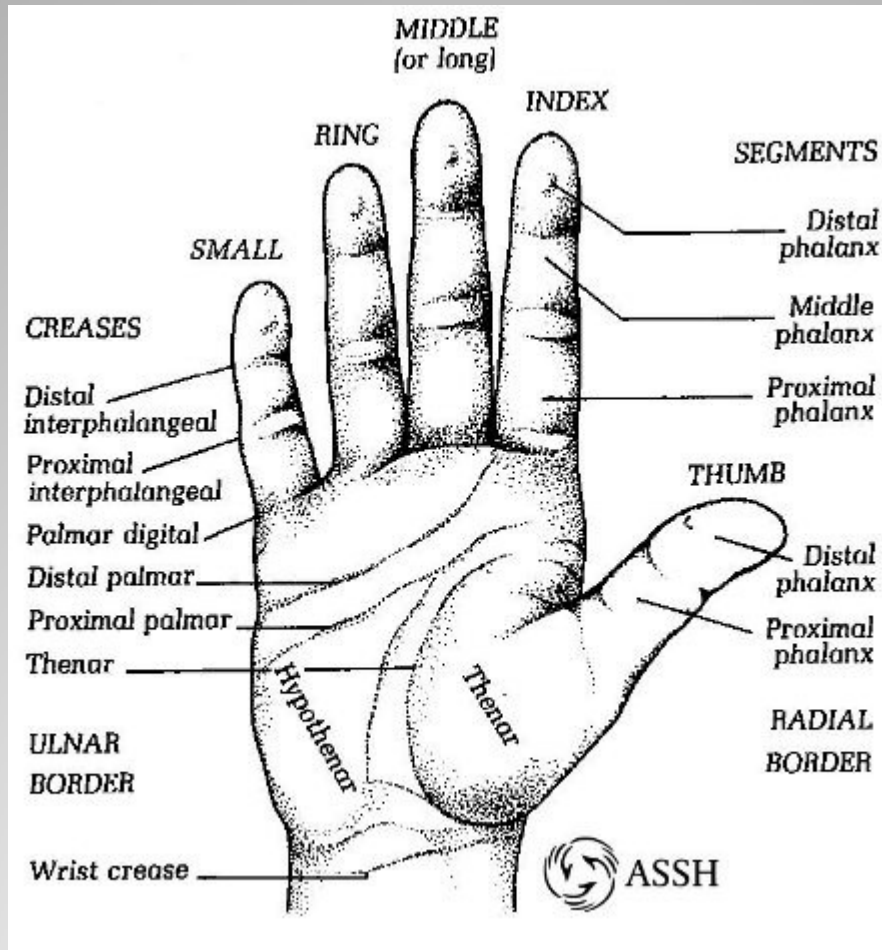
Ribs



Vertebras



Teeth



Fingers

Latin		Greek	
II.		II.	
nervus	septum	<i>nephros</i>	<i>colon</i>
m.	n.	m.	n.
-us/-er	-um	-os	-on
-ī	-ī	-ī	-ī
-um	1	-on	1
-ō	-ō	-ō	-ō
-ī	-a	-ī	-a
-ōrum	-ōrum	-ōrum	-ōrum
-ōs	1	-ōs	1
-īs	-īs	-īs	-īs

Gen. sg. -I

Gender M (F)/N

Nouns of the female gender in this declension are exceptions

Nom. sg. -US/-ER/-OS

Gender M (F)

Nom. sg. -UM/-ON

Gender N

2nd declension