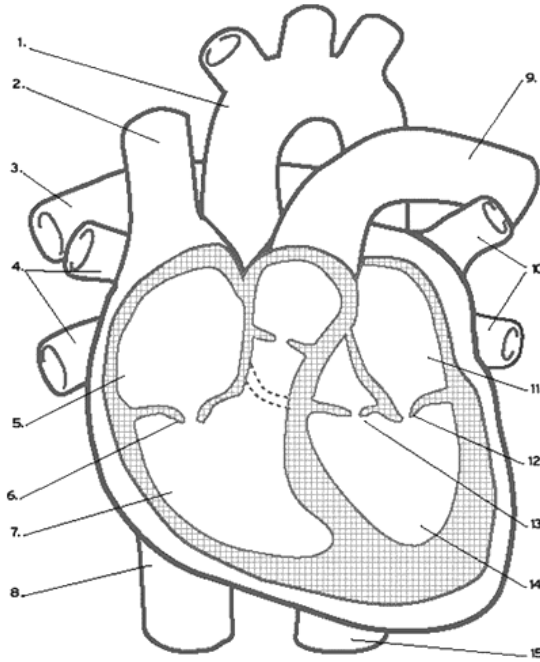


Cardiovascular system worksheet

Dissection

A Watch the video and number the terms in the order they are mentioned for the first time:

- ___ Brachiocephalic
- ___ Papillary muscles
- ___ Pulmonary artery
- ___ Cordae tendinae
- ___ Pulmonary vein
- ___ Aorta
- ___ Tricuspid valve
- ___ Bicuspid (mitral) valve
- ___ Superior vena cava
- ___ Septum



Relative clauses II

A Read the information and complete each sentence. Use a defining or non-defining relative clause. Use commas where necessary.

- 1 He had a sharp pain in the chest. It happened ten days ago. It is now over.
The sharp pain over.
- 2 The wall between the ventricles is called the septum. It has been perforated.
The septum perforated.
- 3 A job of surgeon was advertised. A lot of people applied for it. Few of them had the necessary qualifications.
Few of
- 4 Amy has a son. She showed me a picture of him. He's a cardiologist.
Amy showed me.....
- 5 I was looking for a scalpel this morning. I've found it now.
I've found.....

B Some of these sentences are wrong. Correct them and put in commas where necessary. If the sentence is correct, write OK.

- 1 My friend Jamie that is 30 years old has been diagnosed with a heart disease.
.....
- 2 The operating room that is on the second floor is very small.
.....
- 3 The operating room which we're using at the moment is very small.
.....
- 4 Mark's father that has got a double by-pass runs marathons regularly.
.....
- 5 The doctor that examined me couldn't find anything wrong.
.....

C Join sentences from the boxes to make new sentences. Use **which**.

Jane doesn't tell the aorta from the vena cava. His operation was successful. His heart beat is irregular at night. The valves in her heart don't shut properly. She eats a lot of fat and doesn't exercise.	This means she has to study more. This is not good for her heart. This causes problems with blood circulation. This made his family quite happy. This makes it difficult to sleep.
--	--

- 1
- 2
- 3
- 4
- 5

Relative clauses additional practice

92.2 Make one sentence from two. Use **who/that/which**.

- 1 A girl was injured in the accident. She is now in hospital.
The girl who was injured in the accident is now in hospital.
- 2 A waitress served us. She was impolite and impatient.
The
- 3 A building was destroyed in the fire. It has now been rebuilt.
The
- 4 Some people were arrested. They have now been released.
The
- 5 A bus goes to the airport. It runs every half hour.
The

93.3 These sentences all have a relative clause with a preposition. Put the words in the correct order.

- 1 Did you find (looking / for / you / the books / were)?
Did you find the books you were looking for ..?
- 2 We couldn't go to (we / invited / to / were / the wedding).
We couldn't go to ..?
- 3 What's the name of (the hotel / about / me / told / you)?
What's the name of ..?
- 4 Unfortunately I didn't get (applied / I / the job / for).
Unfortunately I didn't get ..?
- 5 Did you enjoy (you / the concert / to / went)?
Did you enjoy ..?
- 6 Gary is a good person to know. He's (on / rely / can / somebody / you).
Gary is a good person to know. He's ..?
- 7 Who was (the man / were / with / you) in the restaurant last night?
Who was .. in the restaurant last night?