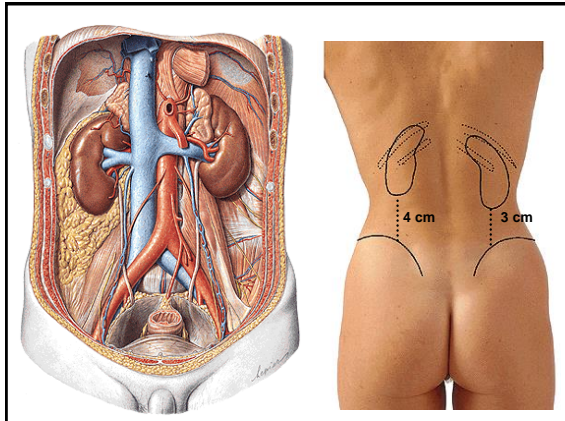
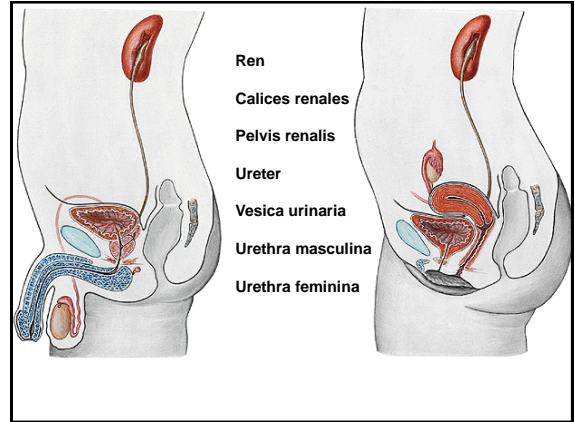
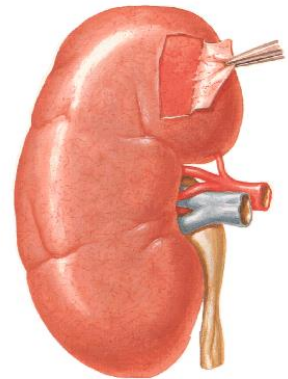


**URINARY SYSTEM
AND
MALE GENITAL SYSTEM**



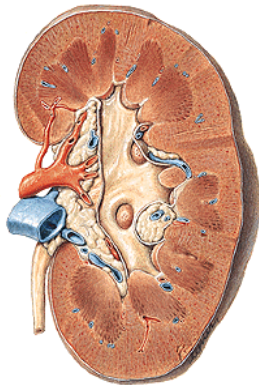
Kidney

- Extremitas superior
- Extremitas inferior
- Facies anterior
- Facies posterior
- Margo lateralis
- Margo medialis
- Capsula fibrosa
- Hilus (hilum) renalis



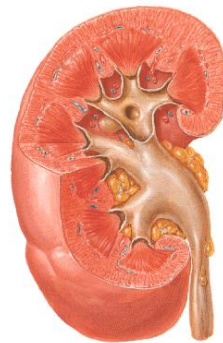
SINUS RENALIS:

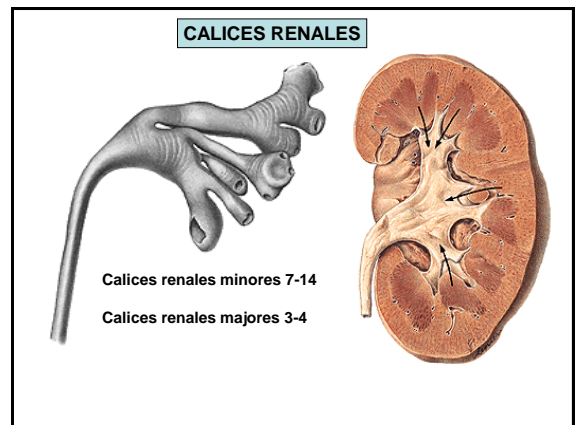
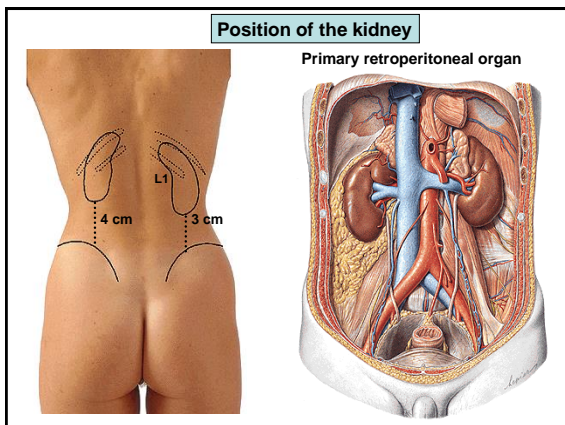
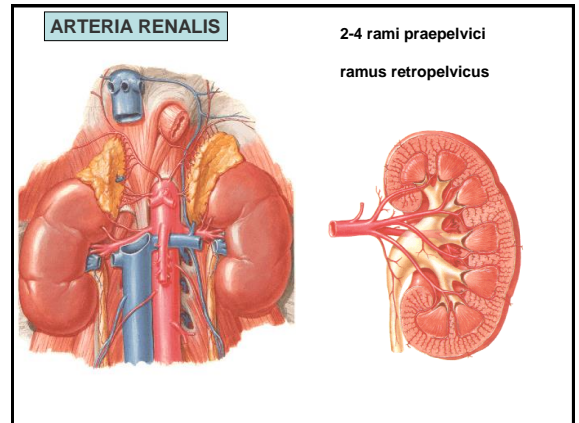
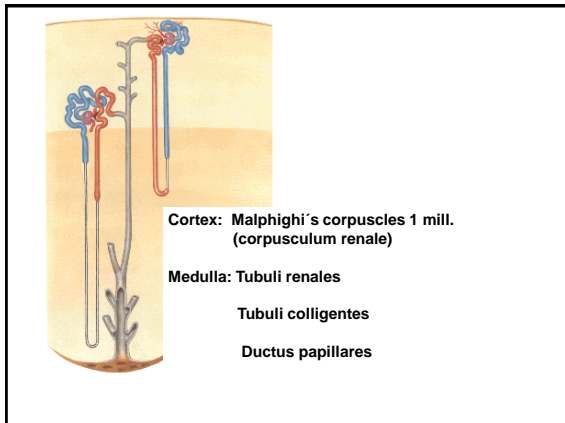
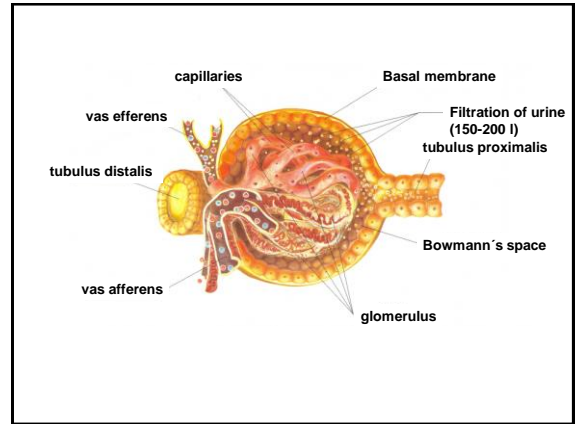
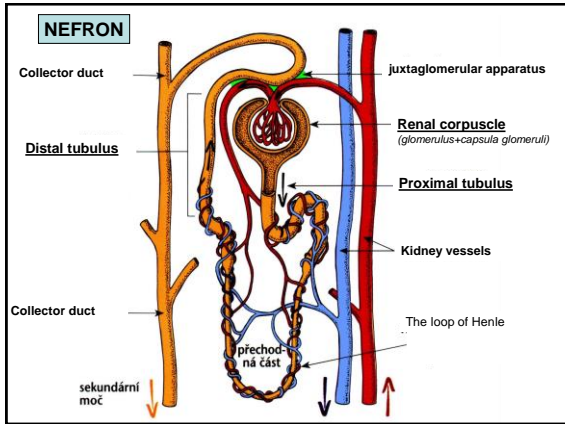
- Calices renales
- Pelvis renalis
- Arteria renalis
- Vena renalis

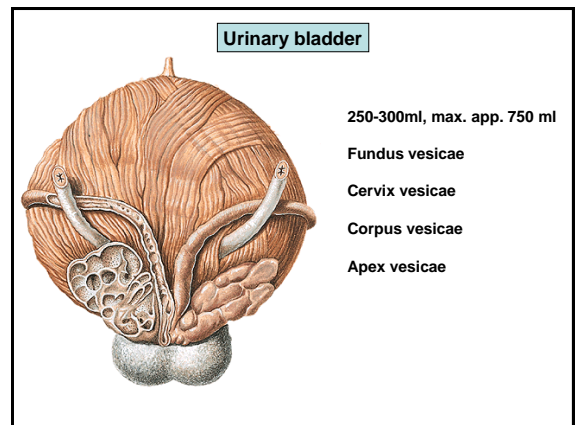
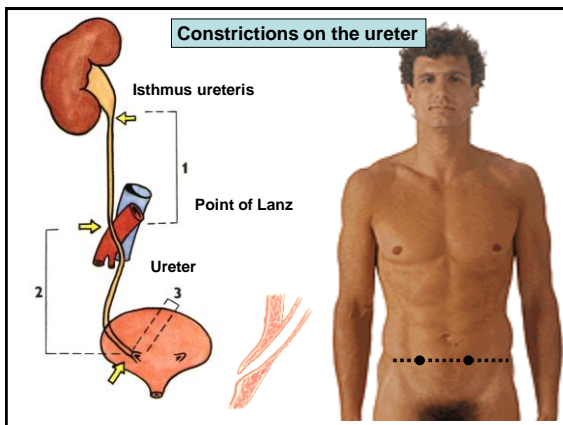
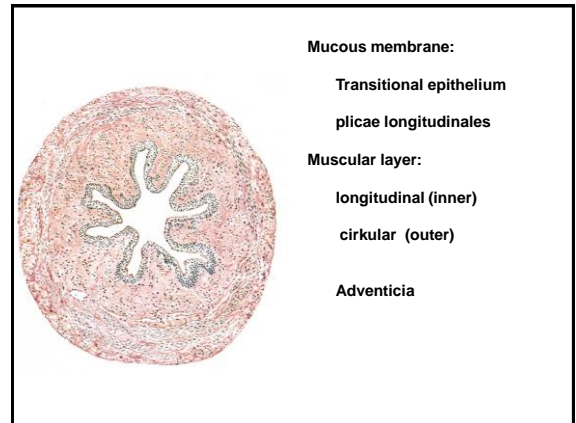
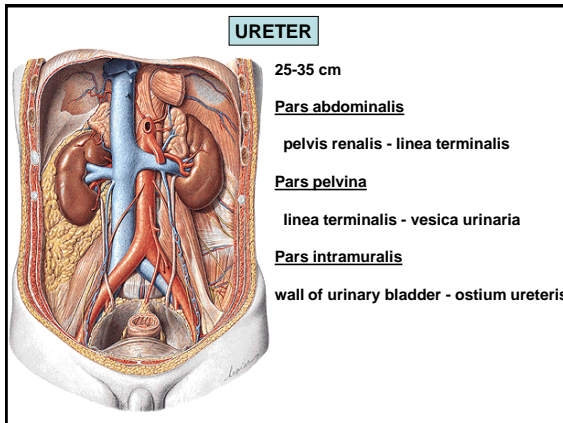
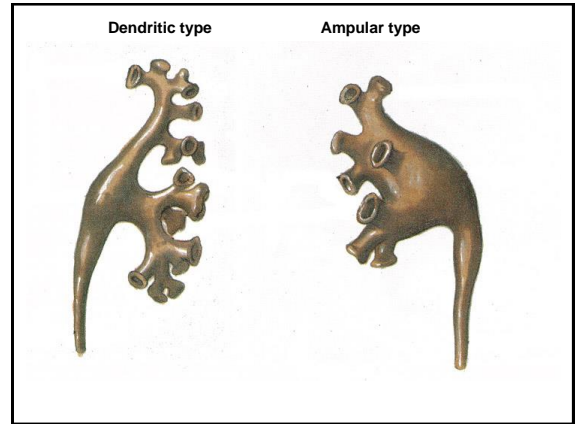
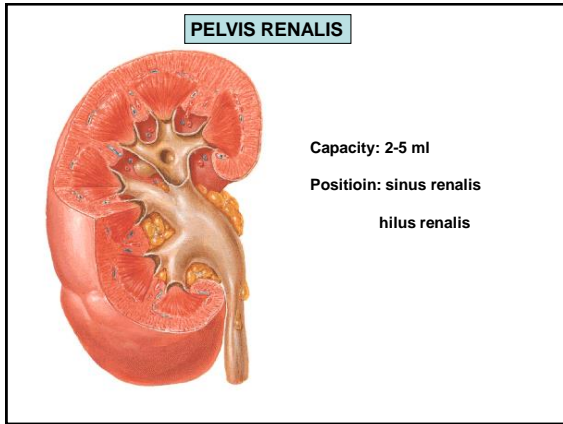


Morphology of the kidney

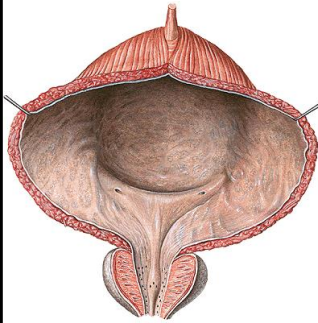
- Capsula fibrosa
- Cortex renalis
- Medulla renalis
- Columnae renales
- Pars radiata corticis
- Pyramides renales
- Papilla renalis
- Foramina papillaria (ductus papillares)
- Area cribrosa
- Lobulus renalis (renculus)





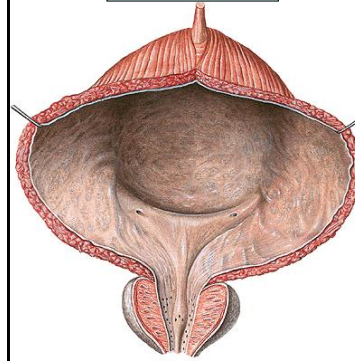


Ultrastructure of urinary bladder



- Mucous membrane
- Transitional epithelium folds
- trigonum vesicae
- Submucous tissue
- Muscular layer
- Peritoneum, adventicia

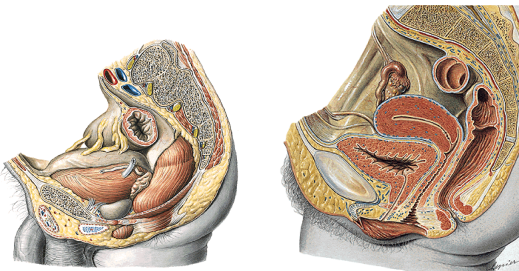
Trigonum vesicae



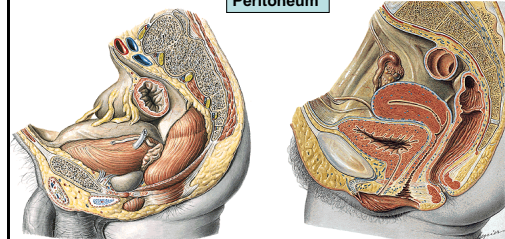
- Ostia ureterum (plicae uretericae)
- Ostium urethrae internum (uvula, anulus urethralis)
- Plica interureterica
- Fibres of Bell
- Fossa retrotrigonalis
- Fossae paratrigoales
- Musculus trigonalis

Adventicia

fascia vesicae, paracystium



Peritoneum

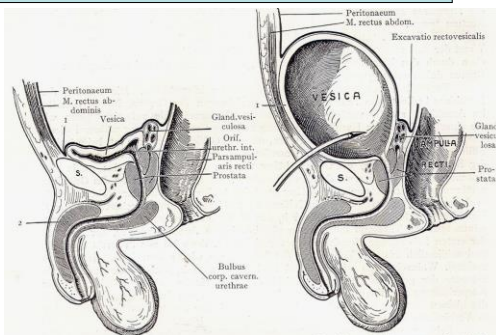


Excavatio rectovesicalis

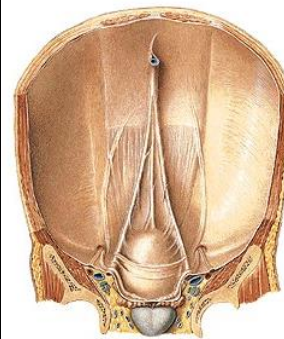
Excavatio vesicouterina

Excavatio rectouterina

Praeperitoneal a subperitoneal position of urinary bladder



Position of urinary bladder

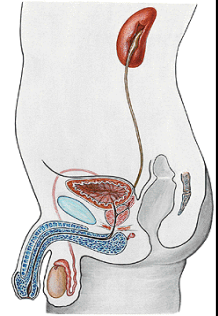


- Spatium retropubicum (fascia vesicoumbilicalis)
- Plicae umbilicales mediana lig. umbilicale medianum (urachus)
- Plicae umbilicales mediales Obliterated aa. umbilicales
- Fossae supravesicales
- Fossae paravesicales
- Plica vesicalis transversa

Male genital system

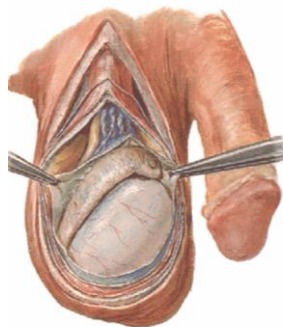
ORGANA GENITALIA MASCULINA INTERNA

- TESTIS
 - EPIDIDYMIS
 - DUCTUS DEFERENS
 - SPERMATIC CORD (FUNICULUS SPERMATICUS)
 - SEMINAL VESICLES (VESICULAE SEMINALES)
 - PROSTATE
 - MALE URETHRA (URETHRA MASCULINA)
- ORGANA GENITALIA MASCULINA EXTERNA**
- PENIS
 - SCROTUM



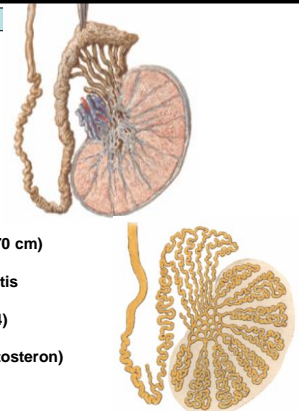
TESTIS

- 4-4,5 cm 20-30 g
- Extremitas superior
- Extremitas inferior
- Facies medialis
- Facies lateralis
- Margo anterior
- Margo posterior



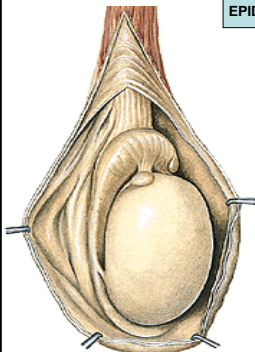
MORPHOLOGY OF TESTIS

- tunica albuginea
- hilum testis
- mediastinum testis
- septula testis
- lobuli testis (200-300)
- tubuli seminiferi contorti (50-70 cm)
- tubuli seminiferi recti, rete testis
- ductuli efferentes testis (10-14)
- interstitial Leydig's cells (testosteron)



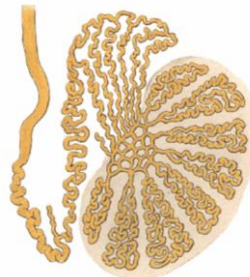
EPIDIDYMIS

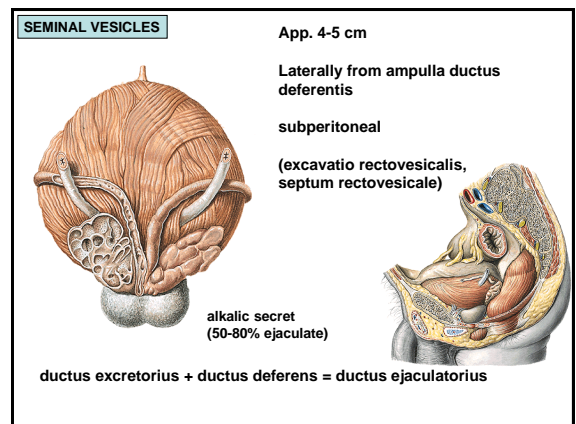
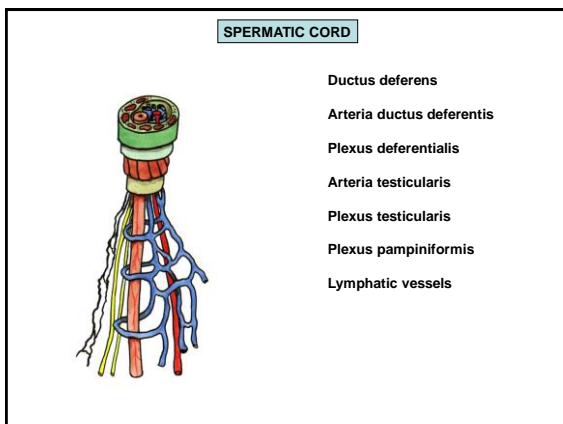
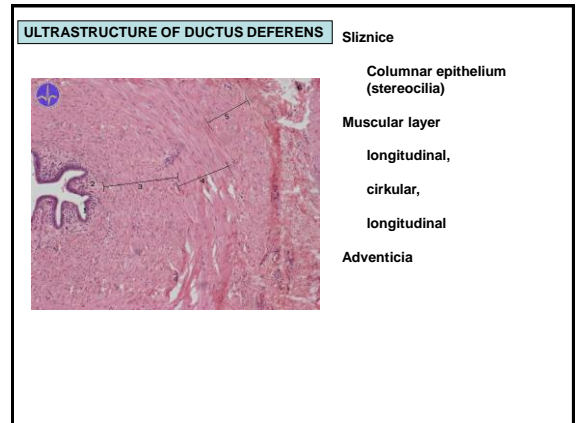
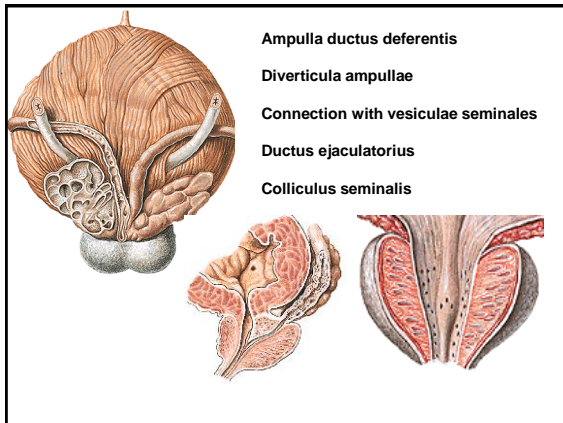
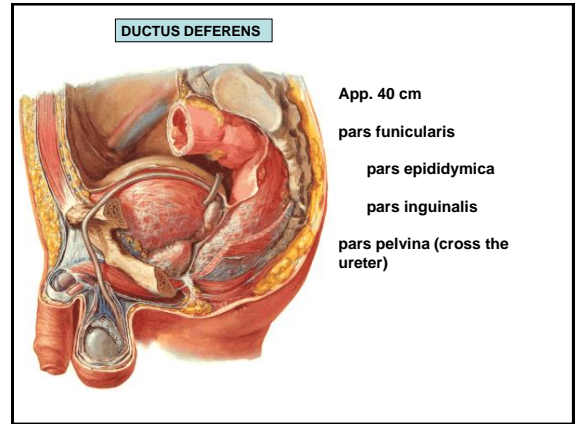
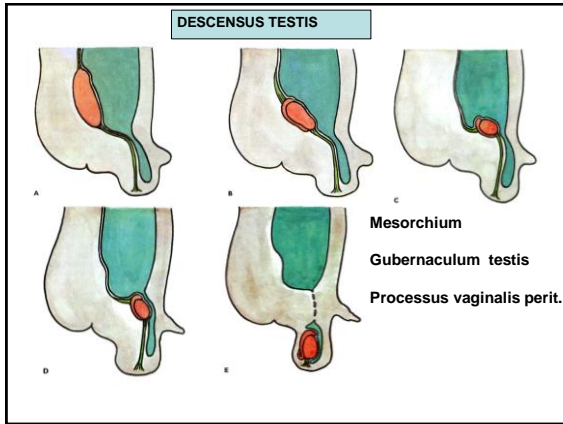
- Caput epididymidis
- Corpus epididymidis
- Cauda epididymidis
- Lig. scrotale (gubernaculum testis)

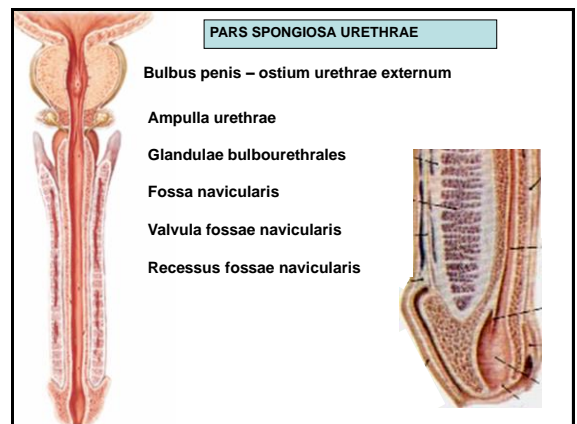
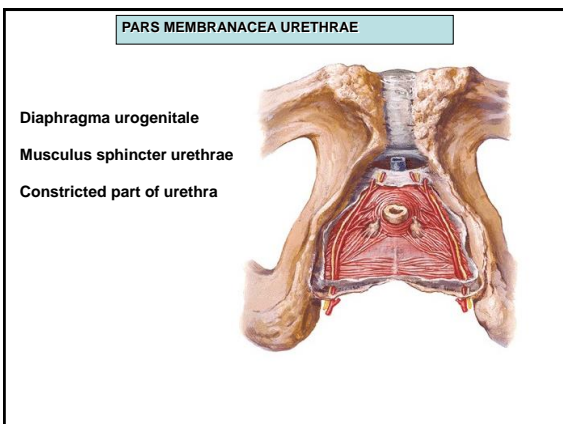
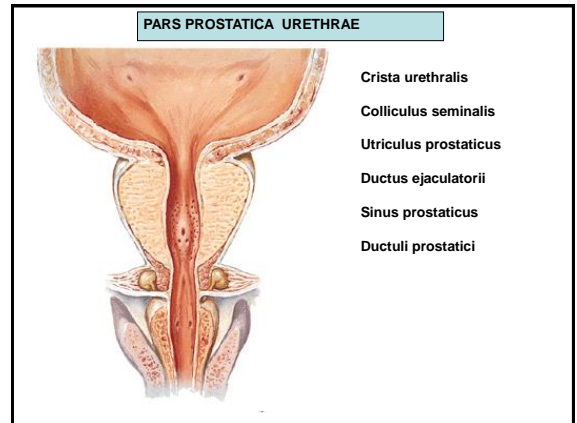
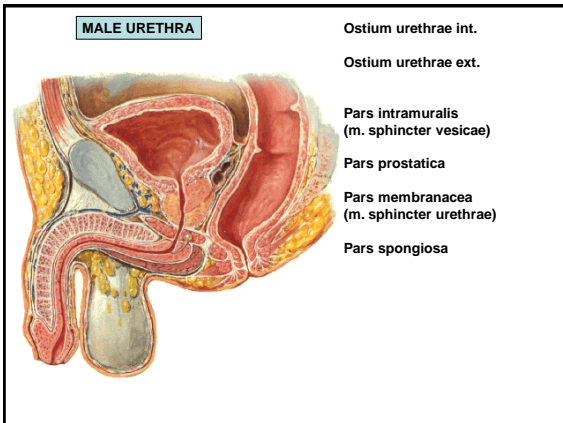
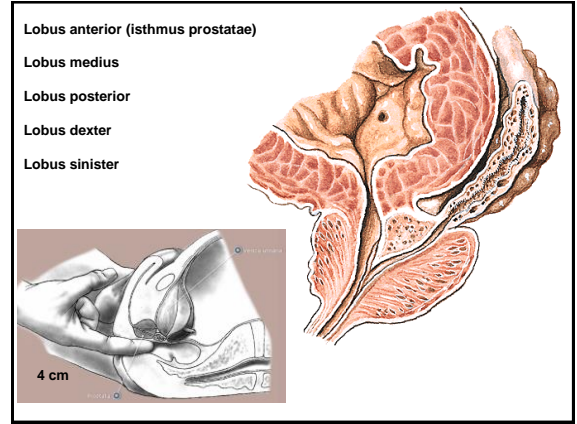
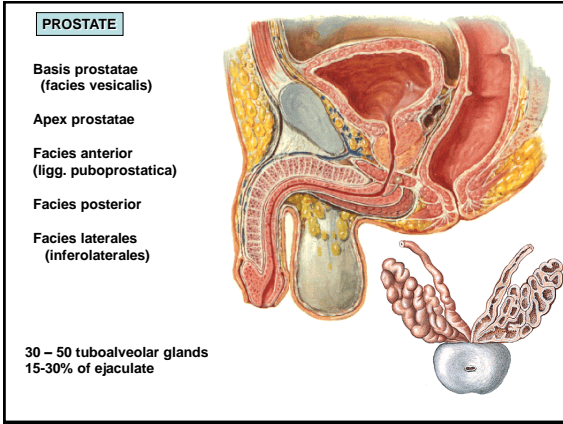


MORPHOLOGY OF EPIDIDYMIS

- Ductuli efferentes testis (12-15)
- Lobuli epididymidis
- Ductus epididymidis
- Ductus deferens





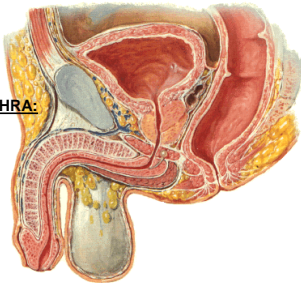


CURVATURES OF URETHRA:

- Curvatura subpubica
- Curvatura praepubica


CONSTRICTED PARTS OF URETHRA:

- Ostium urethrae externum
- Between fossa navicularis and ampulla urethrae
- Pars membranacea
- Pars intramuralis

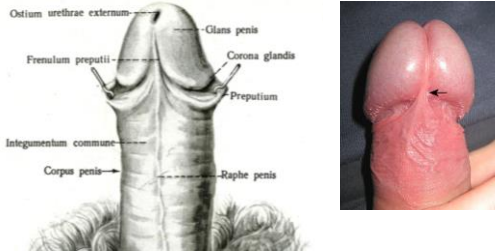


PENIS

- Radix penis
- Corpus penis
- Glans penis
 - Corona glandis
 - Collum glandis
- Dorsum penis
- Facies urethralis

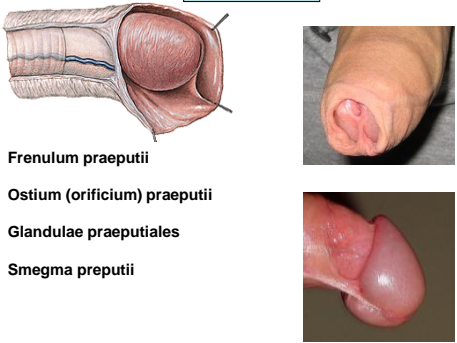


Facies urethralis



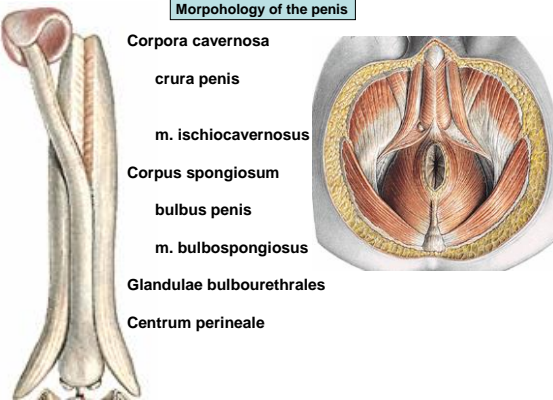
PRAEPUTIUM

- Frenulum praeputii
- Ostium (orificium) praeputii
- Glandulae praeputiales
- Smegma praeputii




Morphology of the penis

- Corpora cavernosa
- crura penis
- m. ischiocavernosus
- Corpus spongiosum
- bulbus penis
- m. bulbospongiosus
- Glandulae bulbourethrales
- Centrum perineale



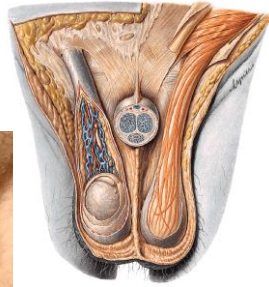
Morphology of cavernous bodies

- Tunica albuginea
- Trabeculae corporis cavernosi (spongiosi)
- Cavernae corporis cavernosi (spongiosi)
- Aa. helicinae

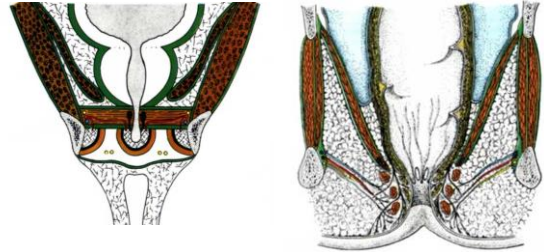


SCROTUM

- Raphe scroti, pubes
- Tunica dartos scroti
- Septum scroti
- Cavum scroti

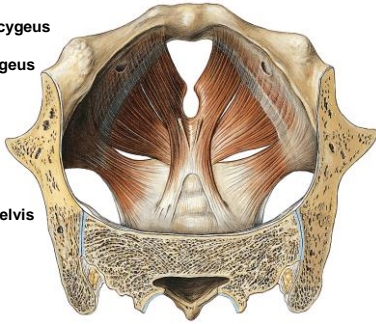


Diaphragma pelvis et urogenitale



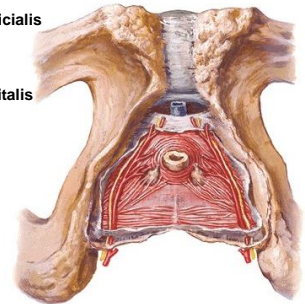
Diaphragma pelvis

- Musculus levator ani (arcus tendineus m. levatoris ani)
- musculus pubococcygeus
- musculus iliococcygeus
- Musculus coccygeus
- Hiatus urogenitalis
- Lig. anococcygeum
- Fascia diaphragmatis pelvis superior et inferior



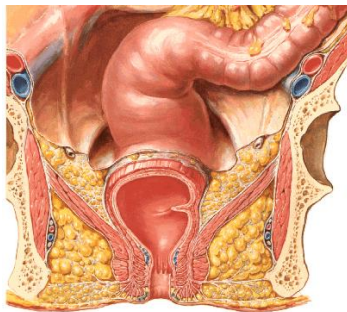
Diaphragma urogenitale

- Lig. transversum perinei
- M. transversus perinei profundus
- M. transversus perinei superficialis
- M. sphincter urethrae
- Fascia diaphragmatis urogenitalis superior et inferior



FOSSA ISCHIORECTALIS

- Mediocranially: diaphragma pelvis
- Laterally: m. obturatorius int. fascia obturatoria (canalis pudendalis)
- Ventrally: recessus pubicus
- Dorsally: m. gluteus maximus



- M. ischiocavernosus
- M. bulbospongiosus
- M. sphincter ani externus
- Fascia perinei superficialis
- Spatium perinei profundum
- Spatium perinei superficiale

