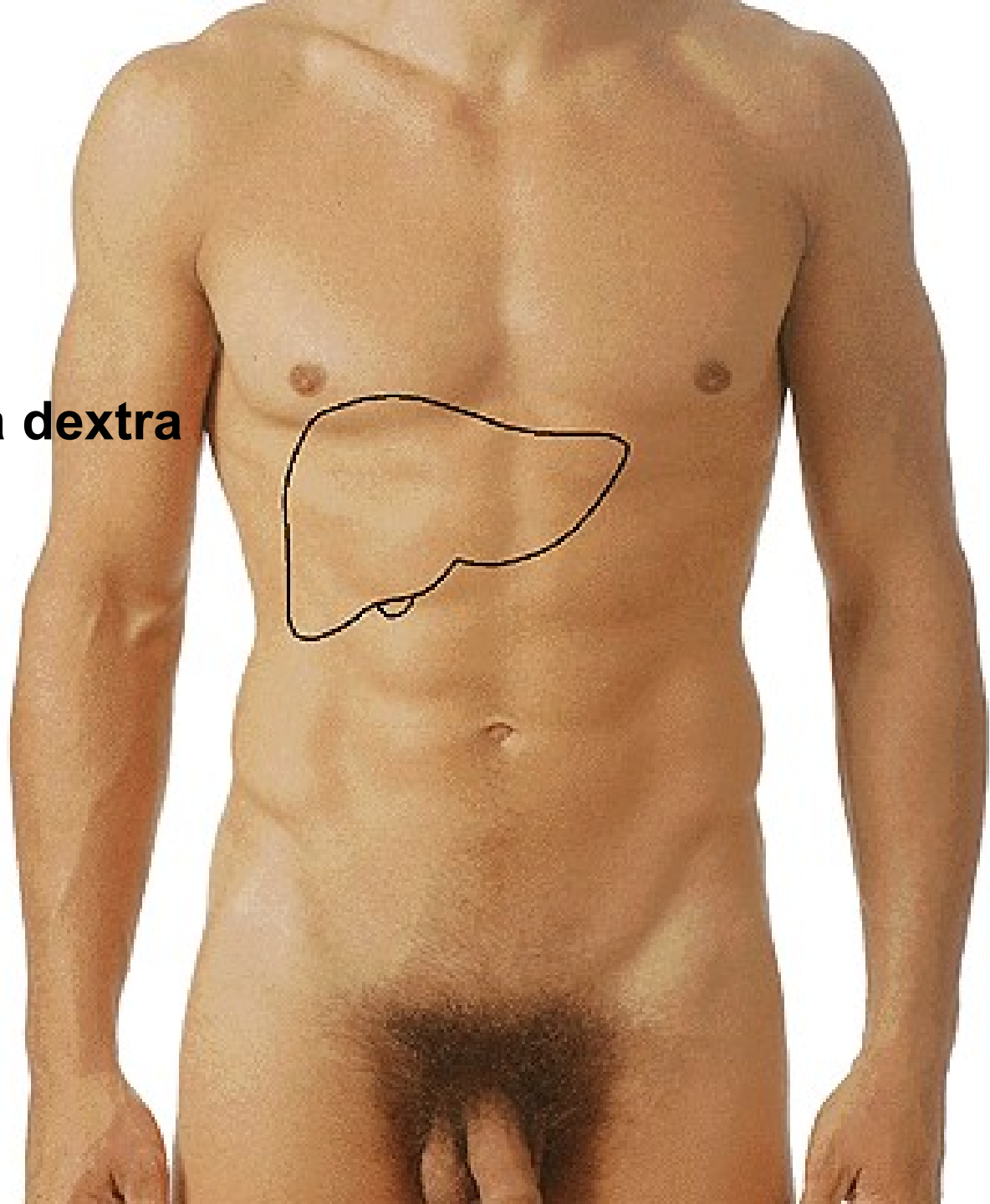


DIGESTIVE SYSTEM II.

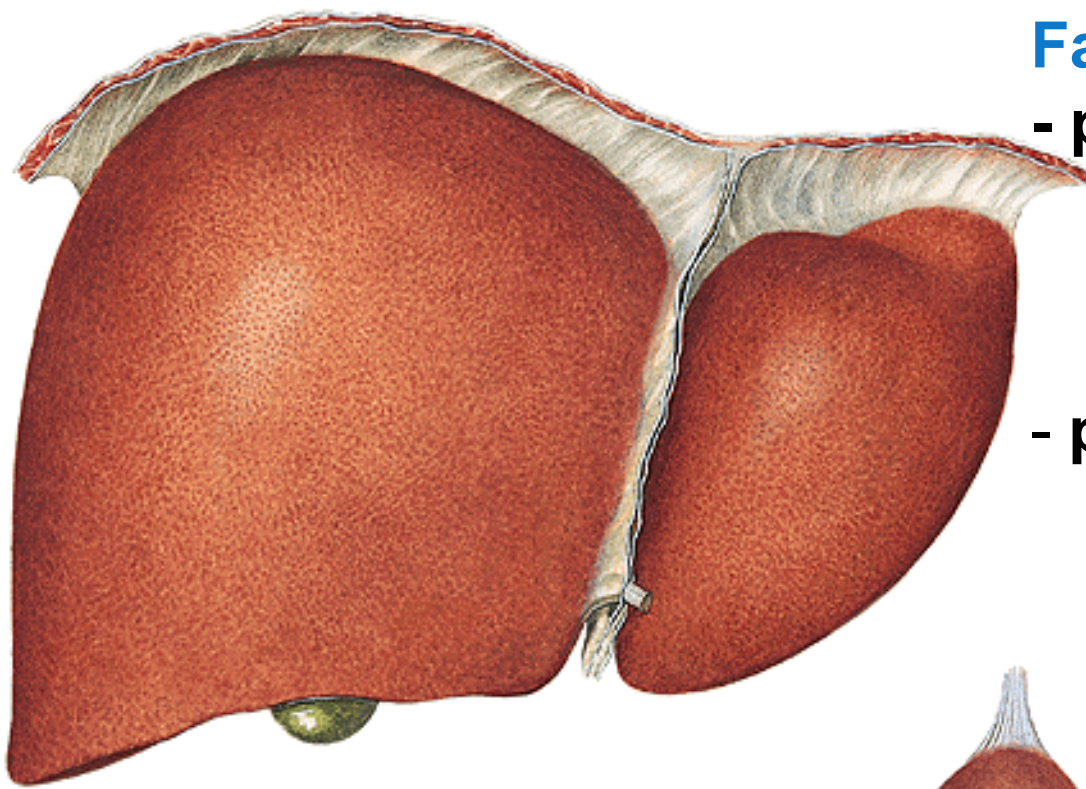
HEPAR

Regio hypochondriaca dextra
Regio epigastrica



Facies diaphragmatica

- pars anterior
 - lig. falciforme hepatis
 - lobus dexter
 - lobus sinister
- pars superior (area nuda)
 - lig. coronarium
 - lig. triangulare dextrum
 - lig. triangulare sinistrum

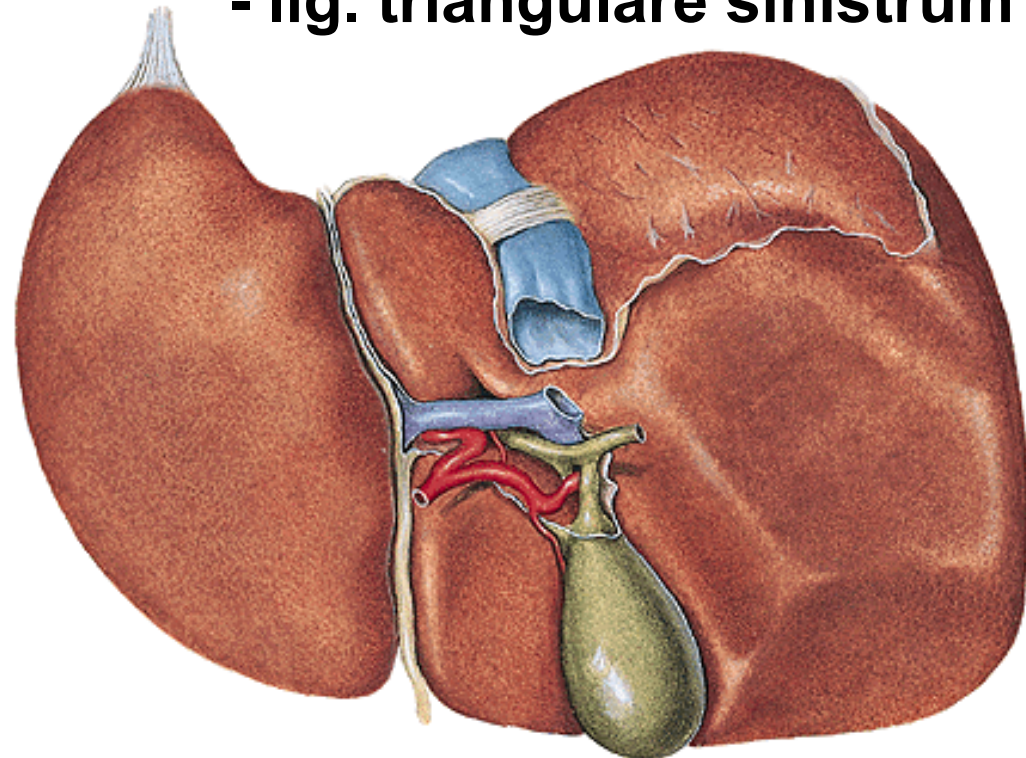


Facies visceralis

Fissura ligamenti teretis

(lig. teres hepatis)

Fissura ligamenti venosi



Fossa vesicae biliaris

Sulcus venae cavae

Lobus dexter

sinister

caudatus

quadratus

Porta hepatis

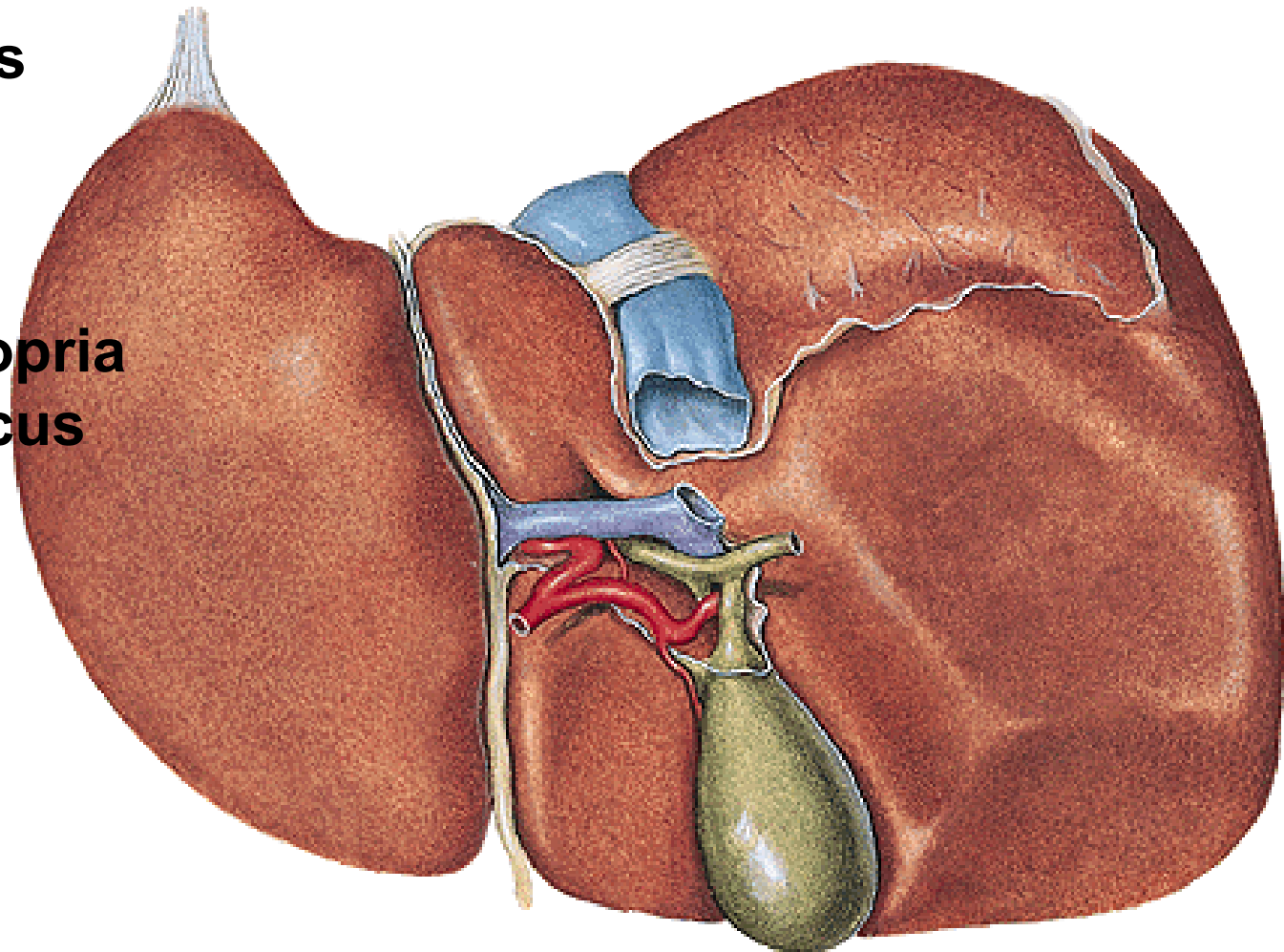
- vena portae

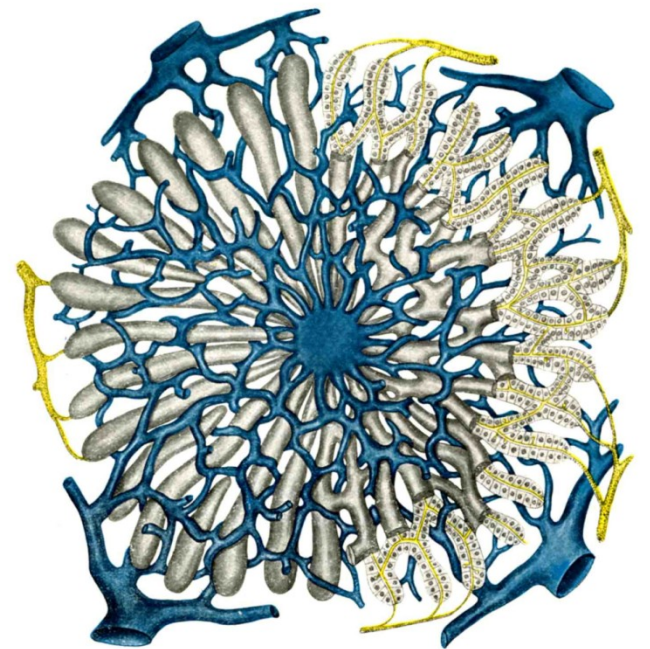
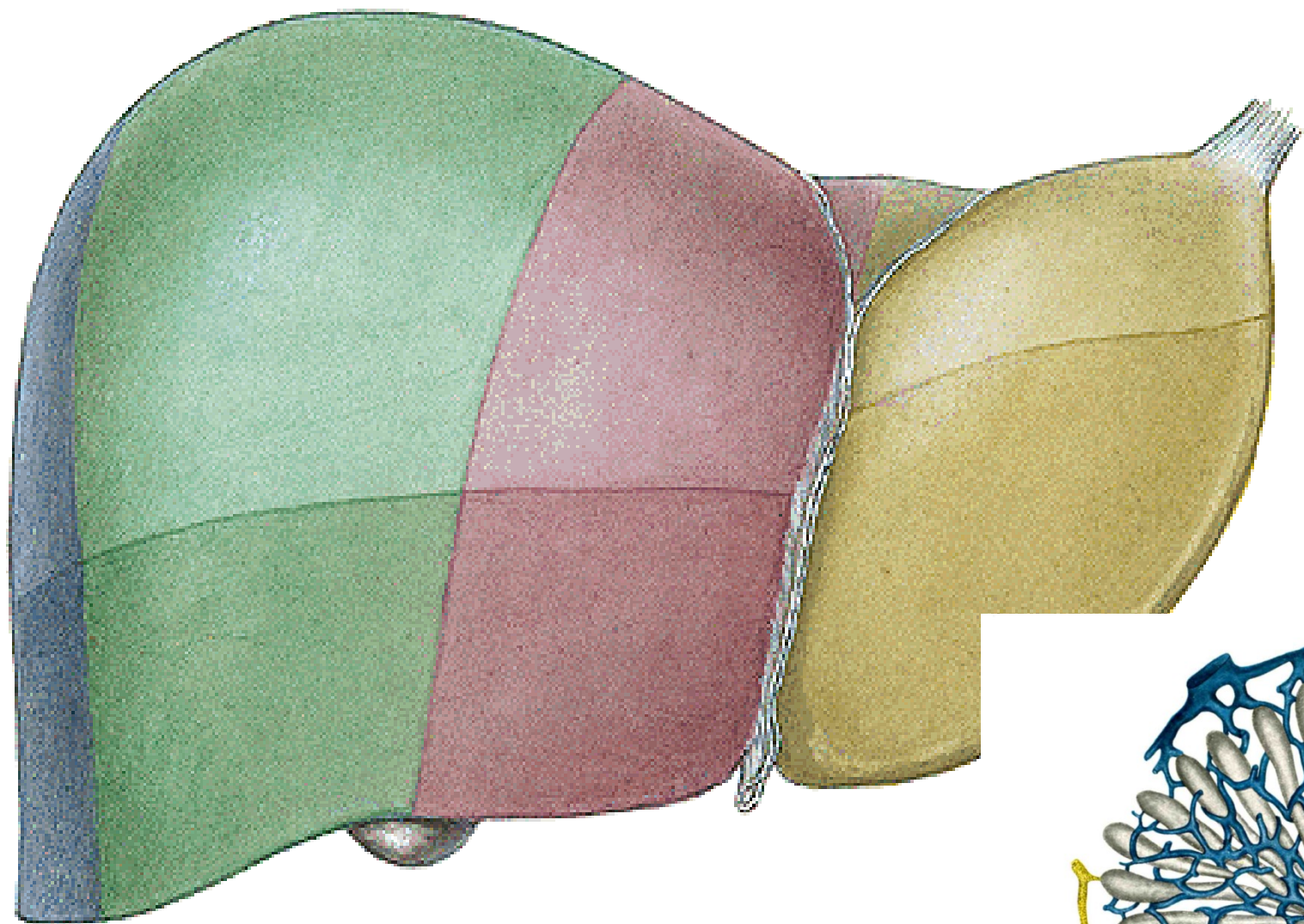
- a. hepatica propria

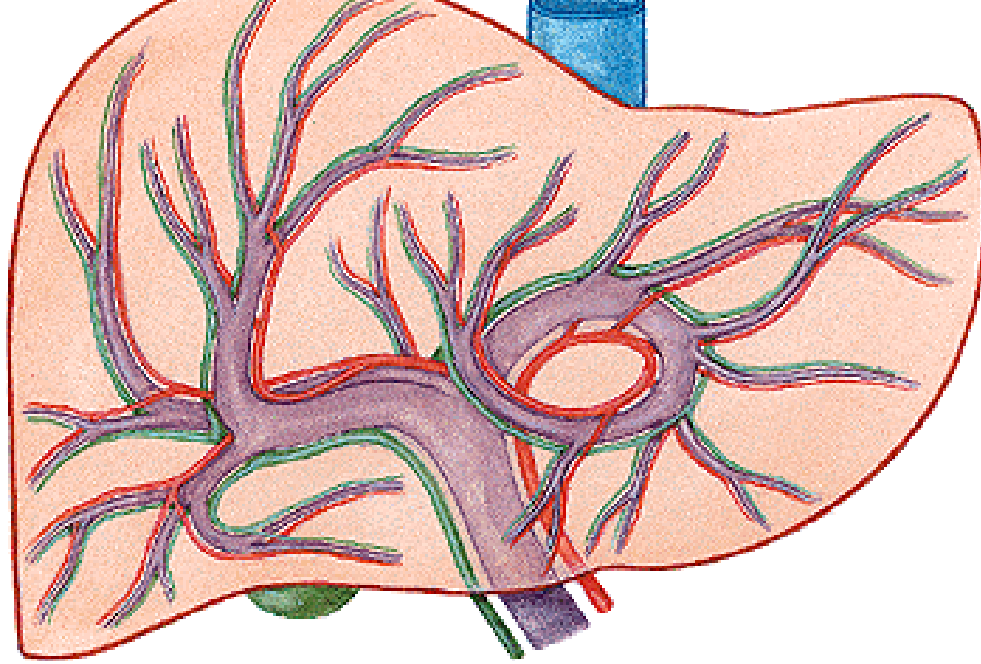
- ductus hepaticus

communis

(portal triad)







V. PORTAE

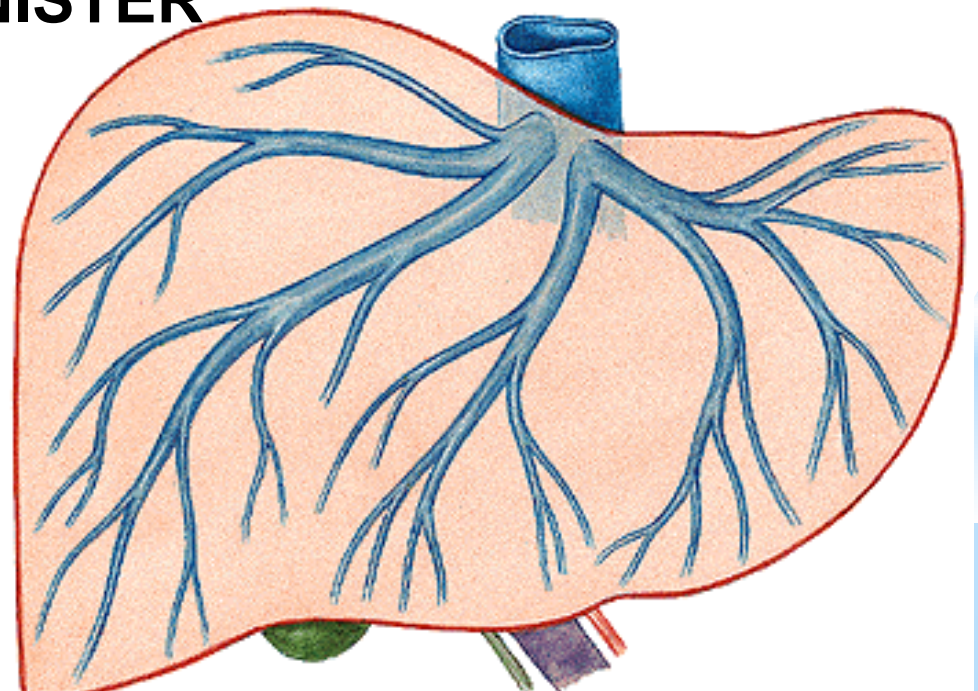
(v. mesenterica sup.
+ v. lienalis)

A. HEPATICA PROPRIA

- a. hepatica communis

→ RAMUS DEXTER ET SINISTER

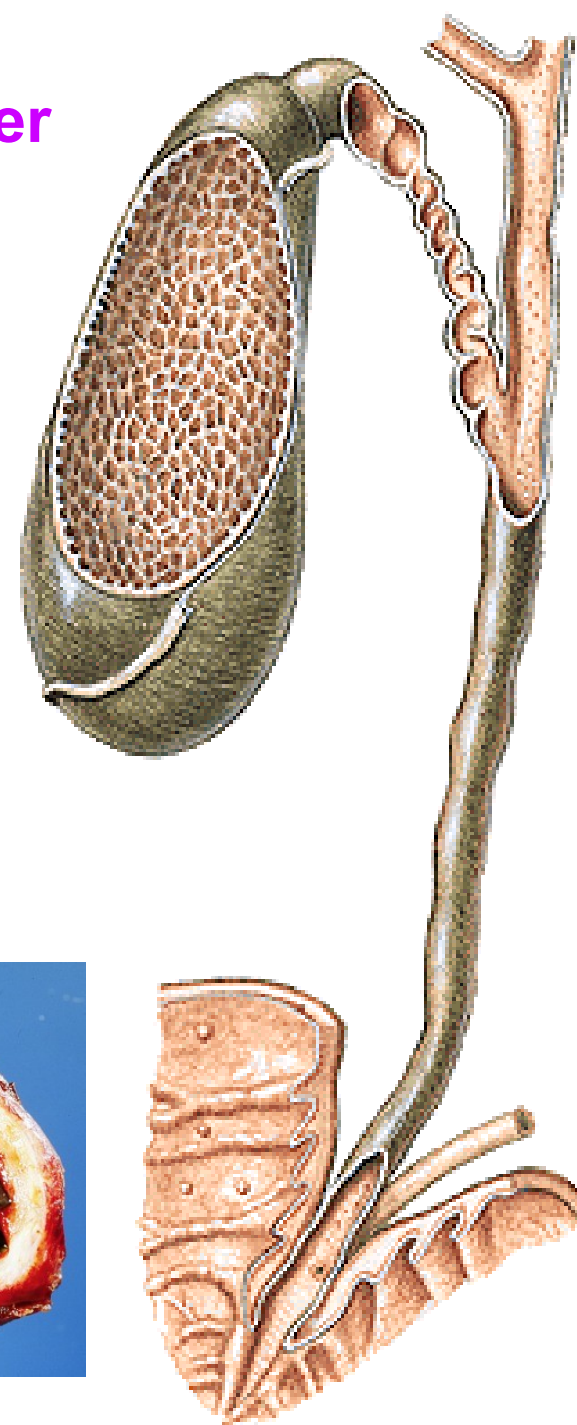
→ VV. HEPATICAE



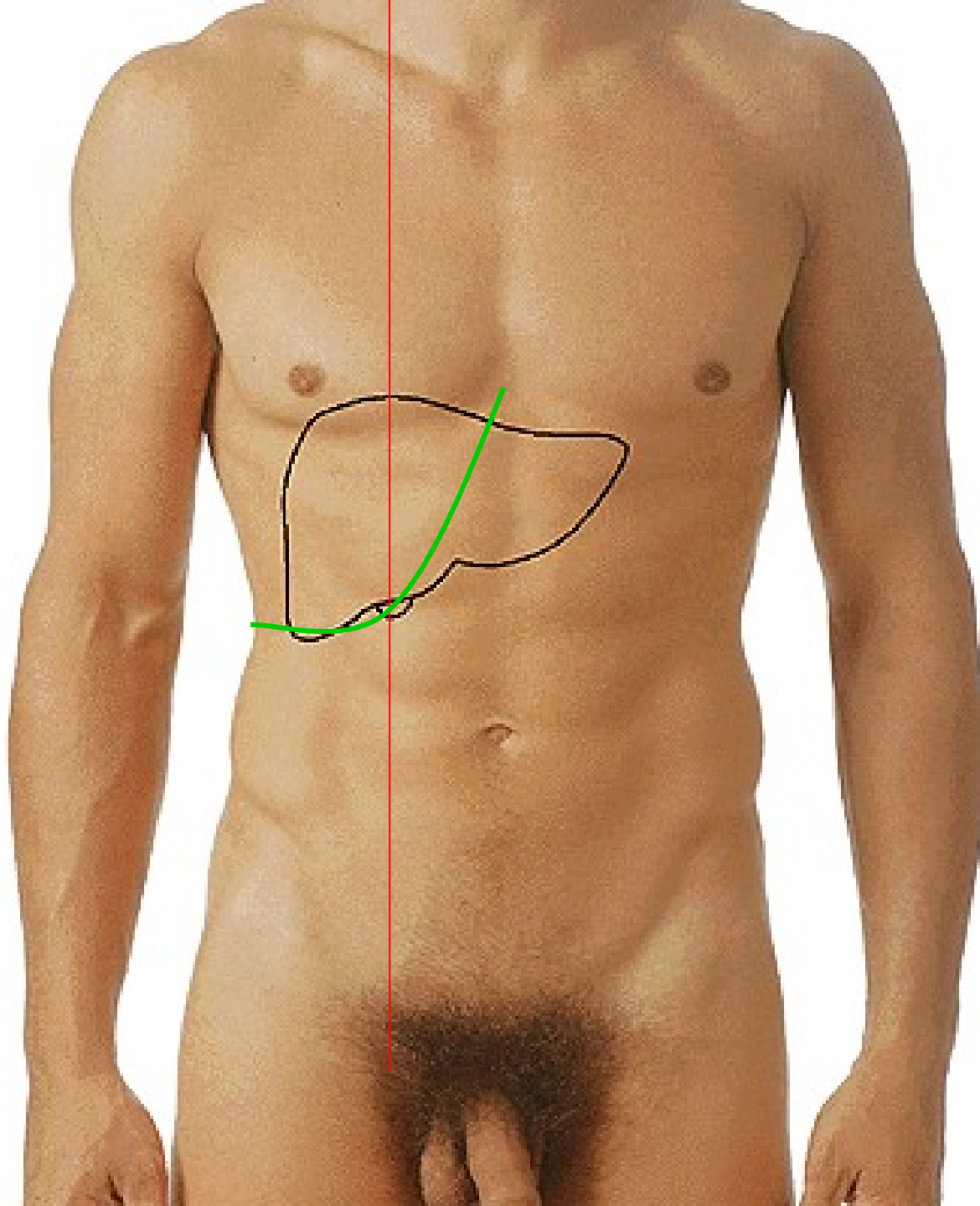
Intrahepatic ducts → **ductus hepaticus dexter et sinister** – **ductus hepaticus communis** + **ductus cysticus** = **ductus choledochus**

Ampulla hepatopancreatica
M. sphincter ampullae (Oddi)
Papilla duodeni major (Vater)
(Plica longitudinalis duodeni)

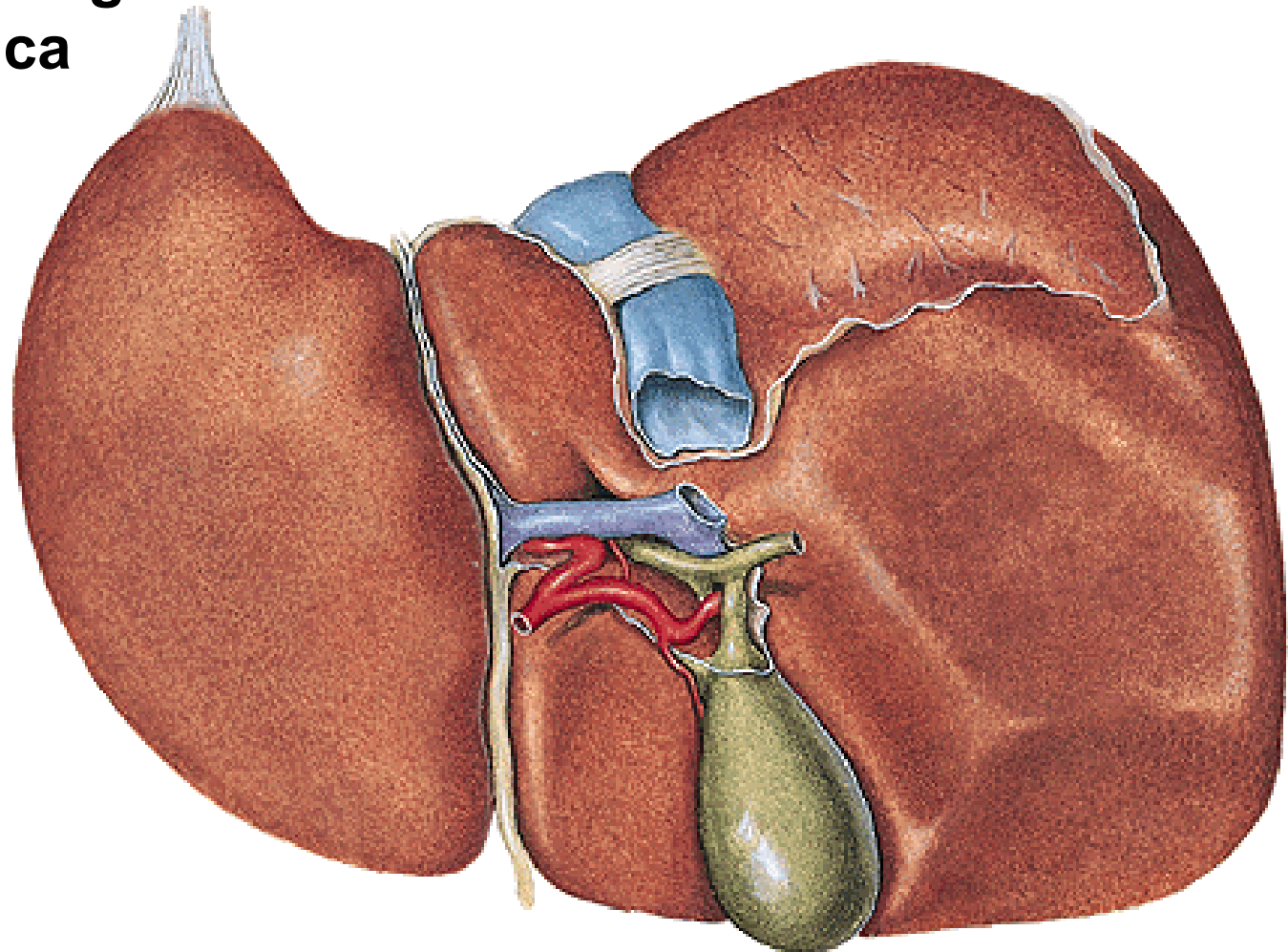
Vesica biliaris (fellea)
- fundus, corpus, infundibulum, collum
- ductus cysticus (plica spiralis)



**Murphy's
point**

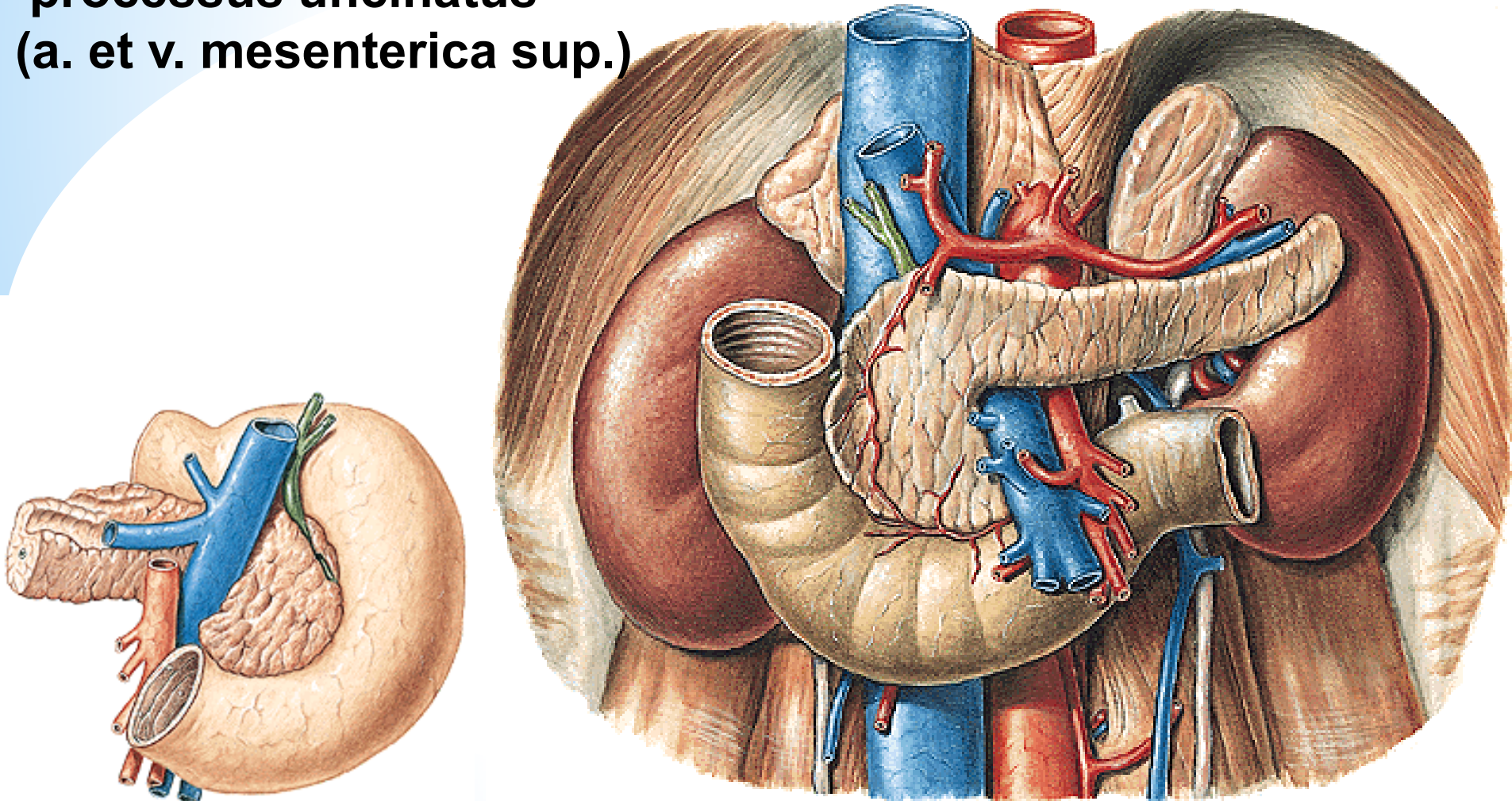


Impressio renalis
Impressio suprarenalis
Impressio colica
Impressio duodeni
Impressio oesophagea
Impressio gastrica



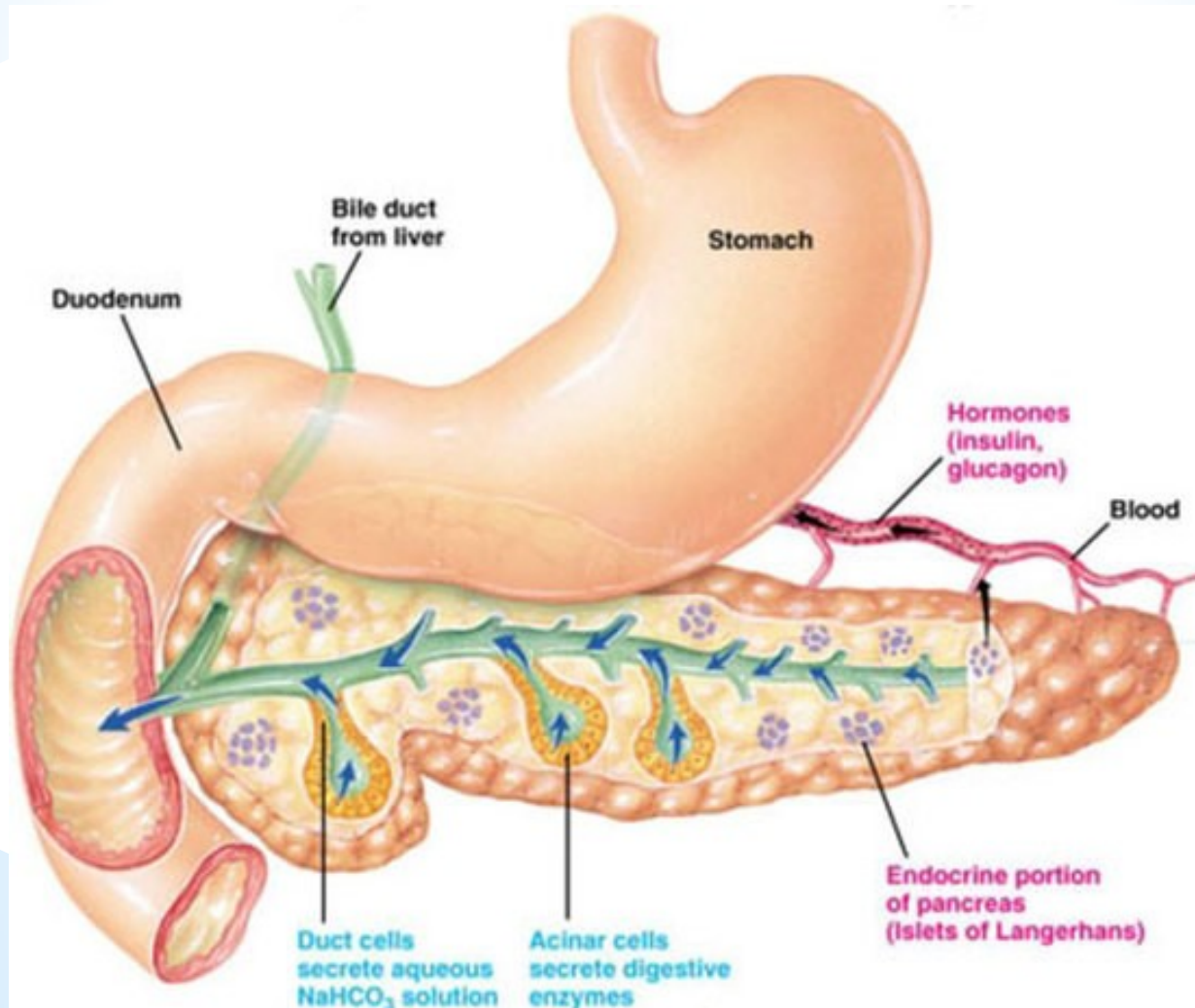
PANCREAS

**Caput, collum, corpus, cauda,
incisura pancreatis,
processus uncinatus
(a. et v. mesenterica sup.)**



Exocrine pancreas:
ductus pancreaticus
ductus pancreaticus accessorius
succus pancreaticus

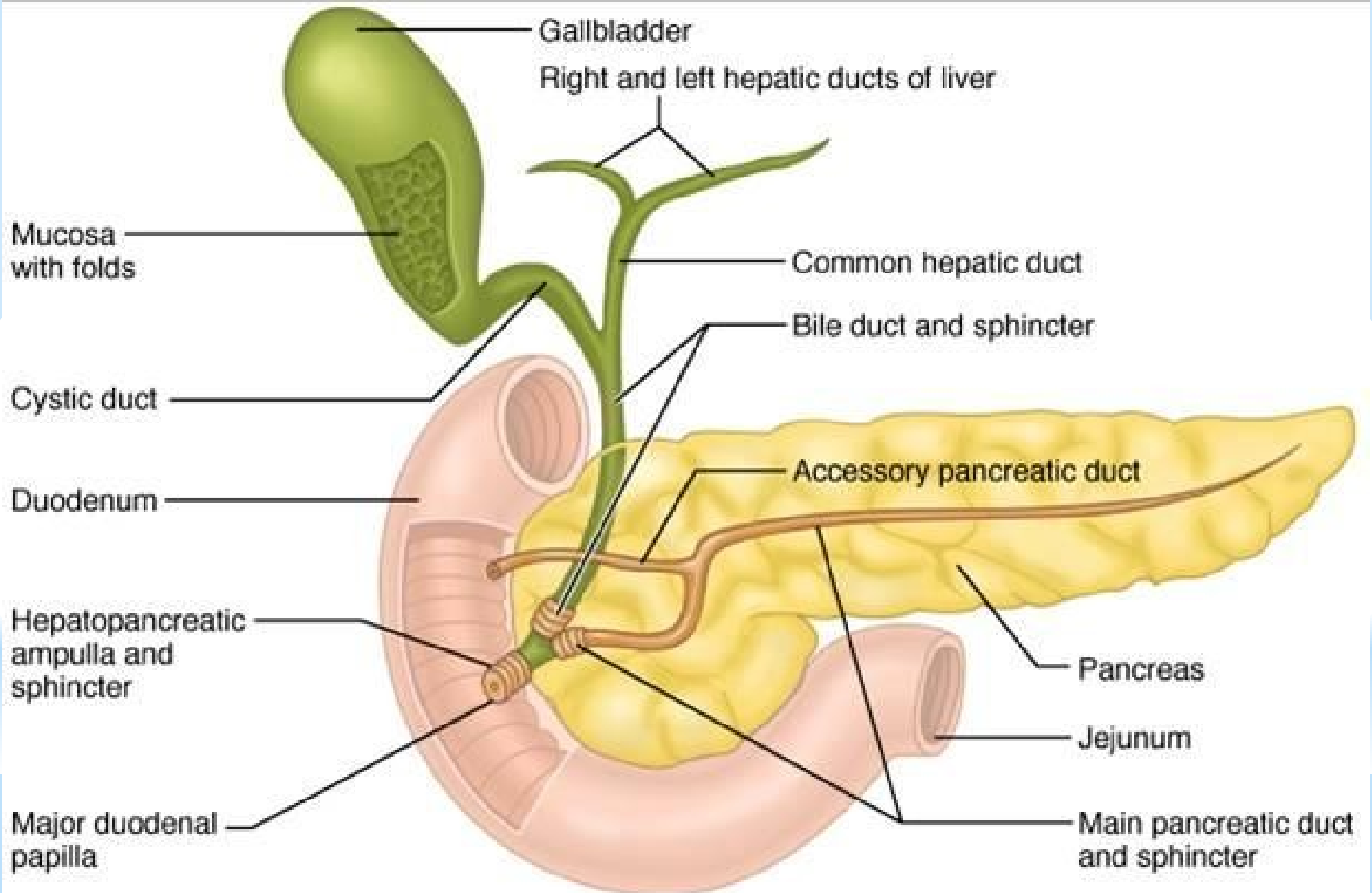
Endocrine pancreas:
insulae pancreaticae
(islets of Langerhans
0.1-0.5 mm in diameter)
insulin, glucagon



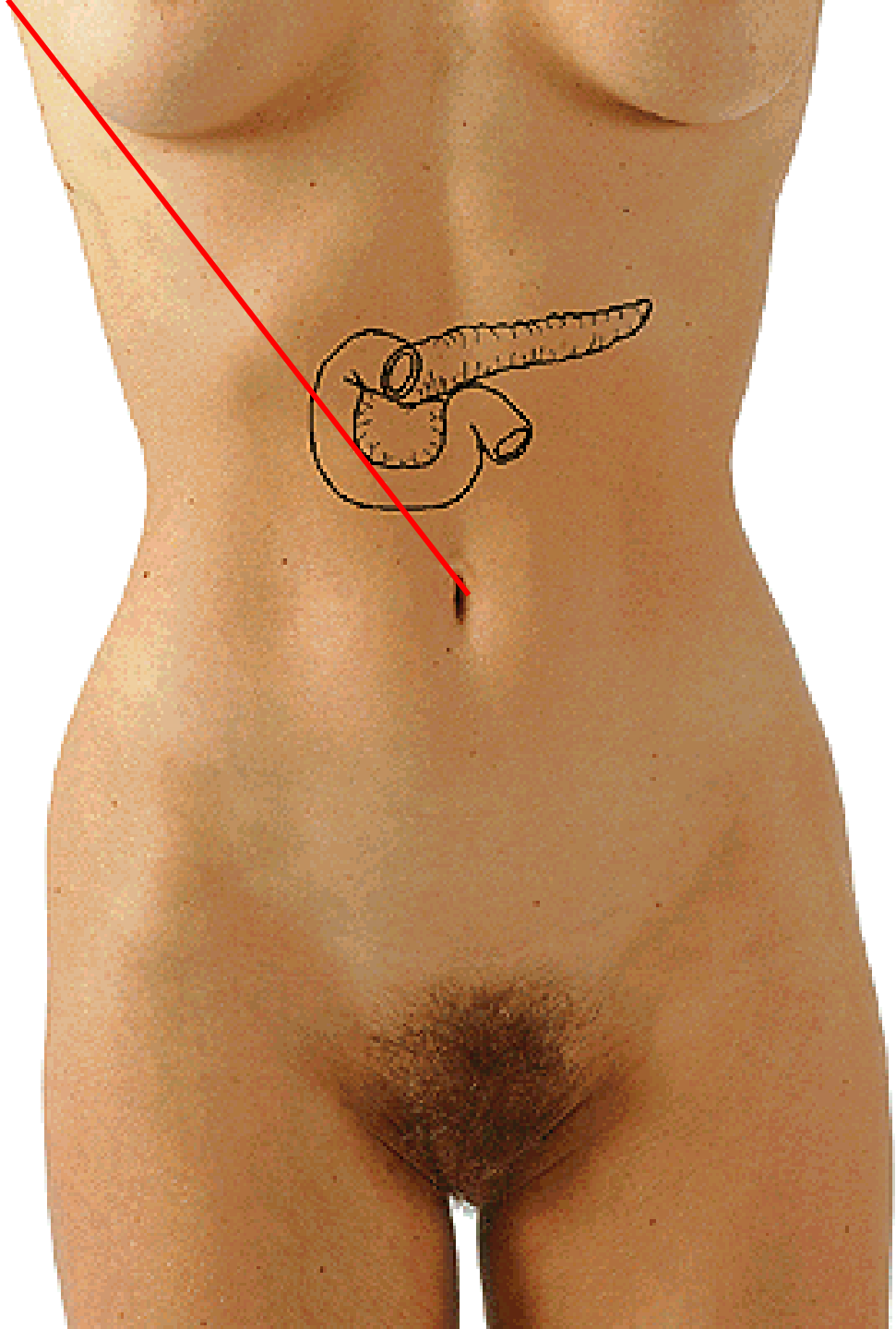
M. sphincter ductus pancreatici

M. sphincter ductus choledochi

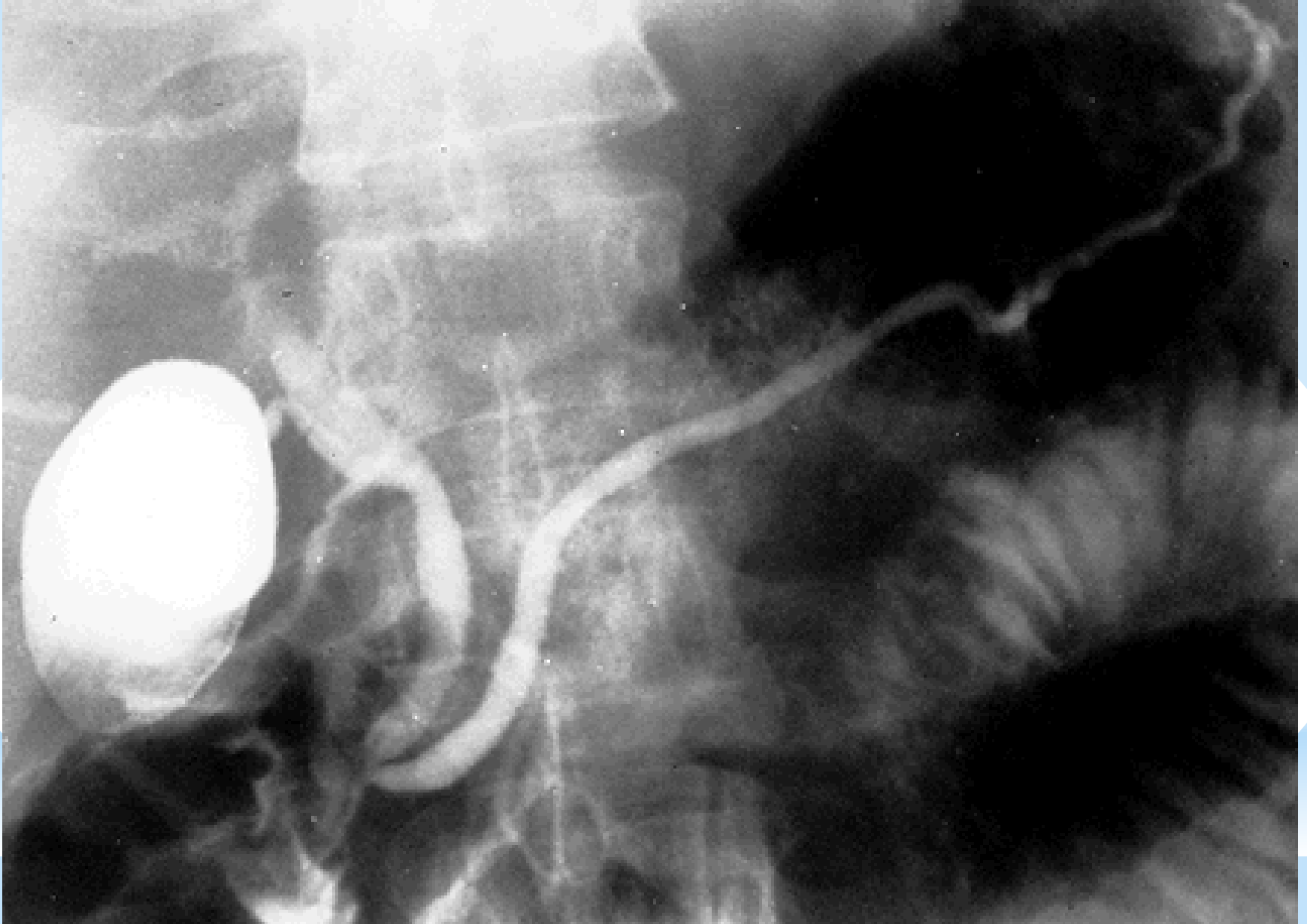
M. sphincter ampullae hepatopancreaticae



Umbilico-axillary line
- point of Desjardin

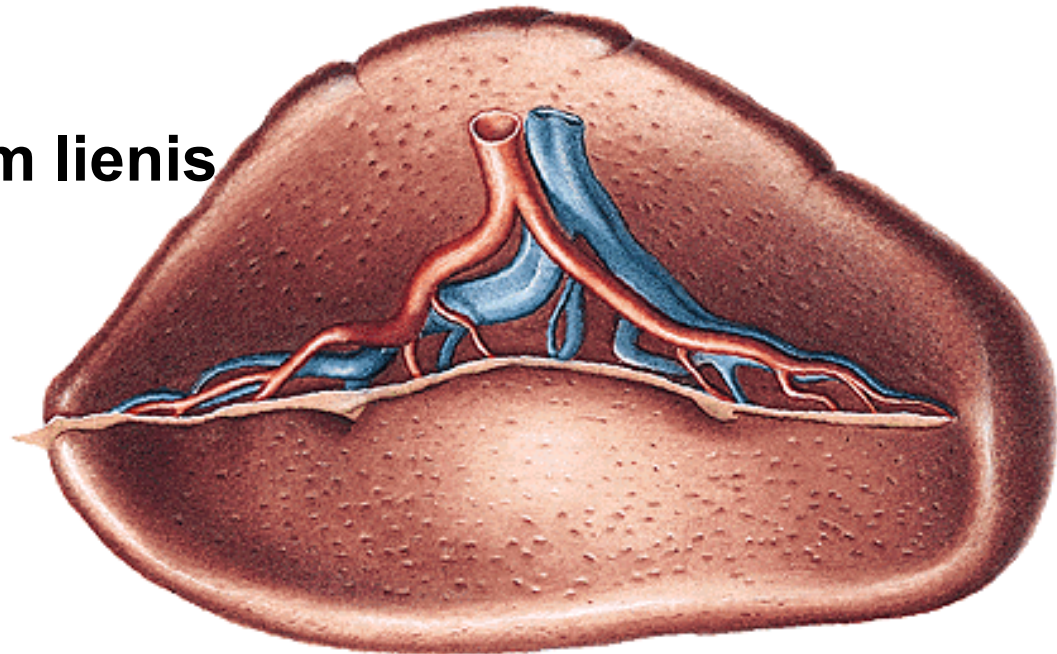


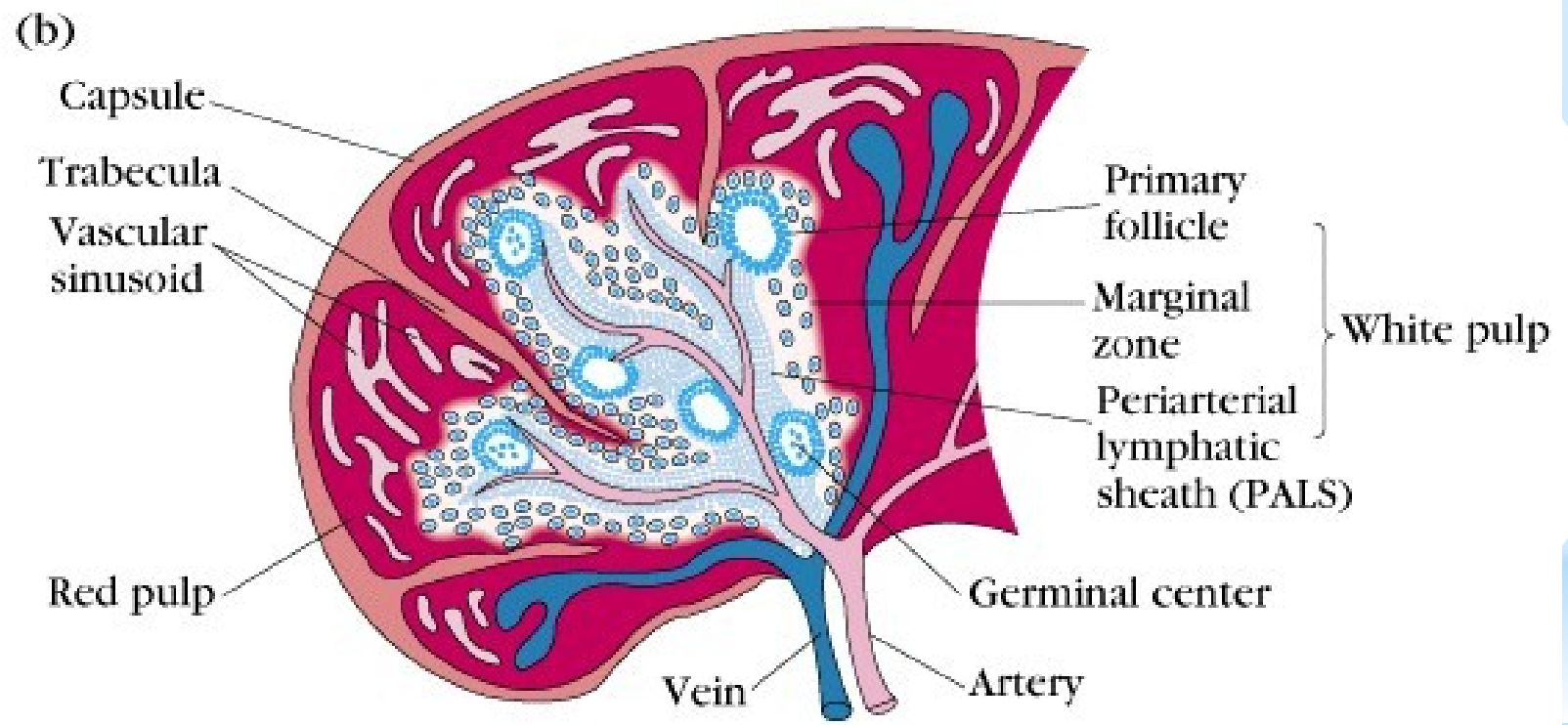
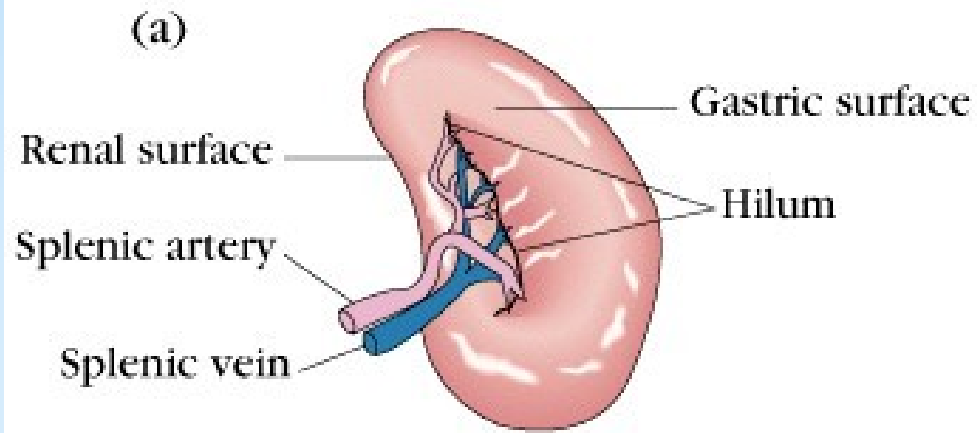
ERCP – endoscopic retrograde cholangio-pancreatography



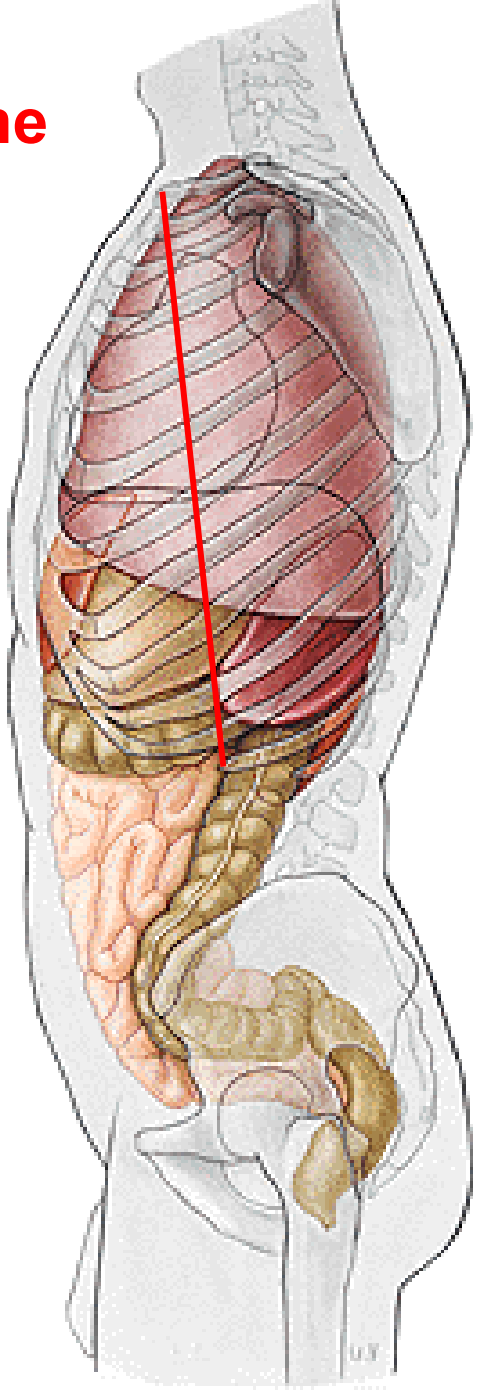
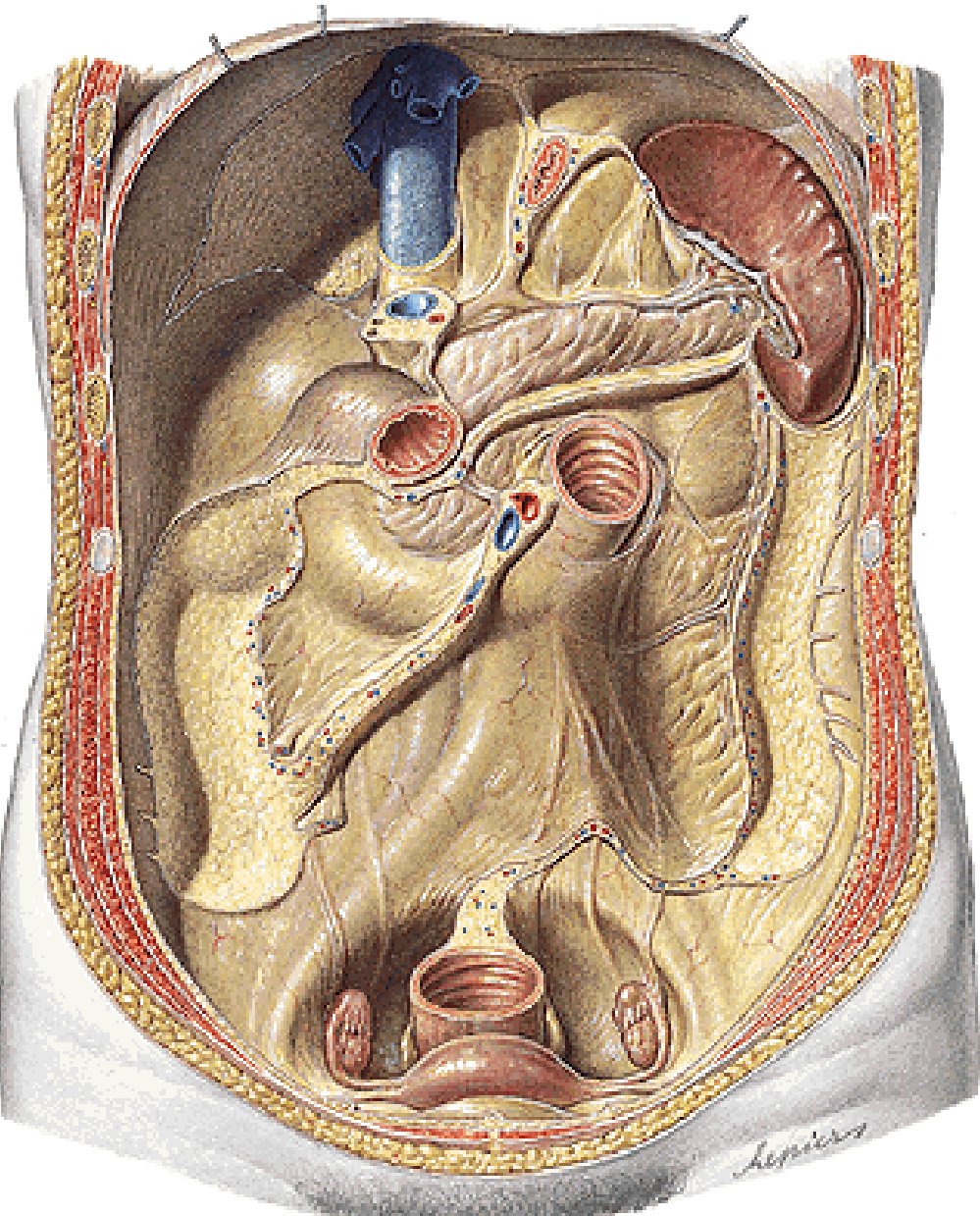
LIEN, SPLEN

- extremitas anterior
- extremitas posterior
- margo superior – crenae lienis
- margo inferior
- facies diaphragmatica
- facies visceralis – hilum lienis
- capsula lienis



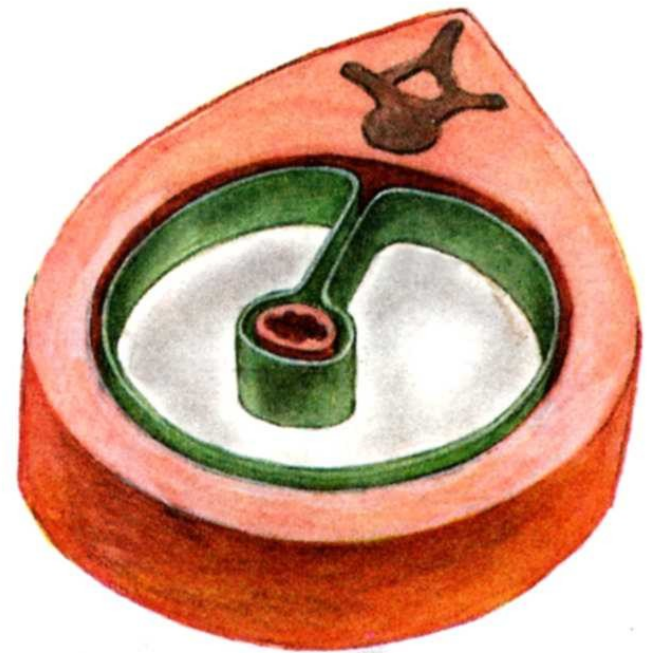


Costoarticular line



CAVITAS PERITONEALIS

PERITONEUM PARIETALE
PERITONEUM VISCERALE



CAVITAS ABDOMINALIS

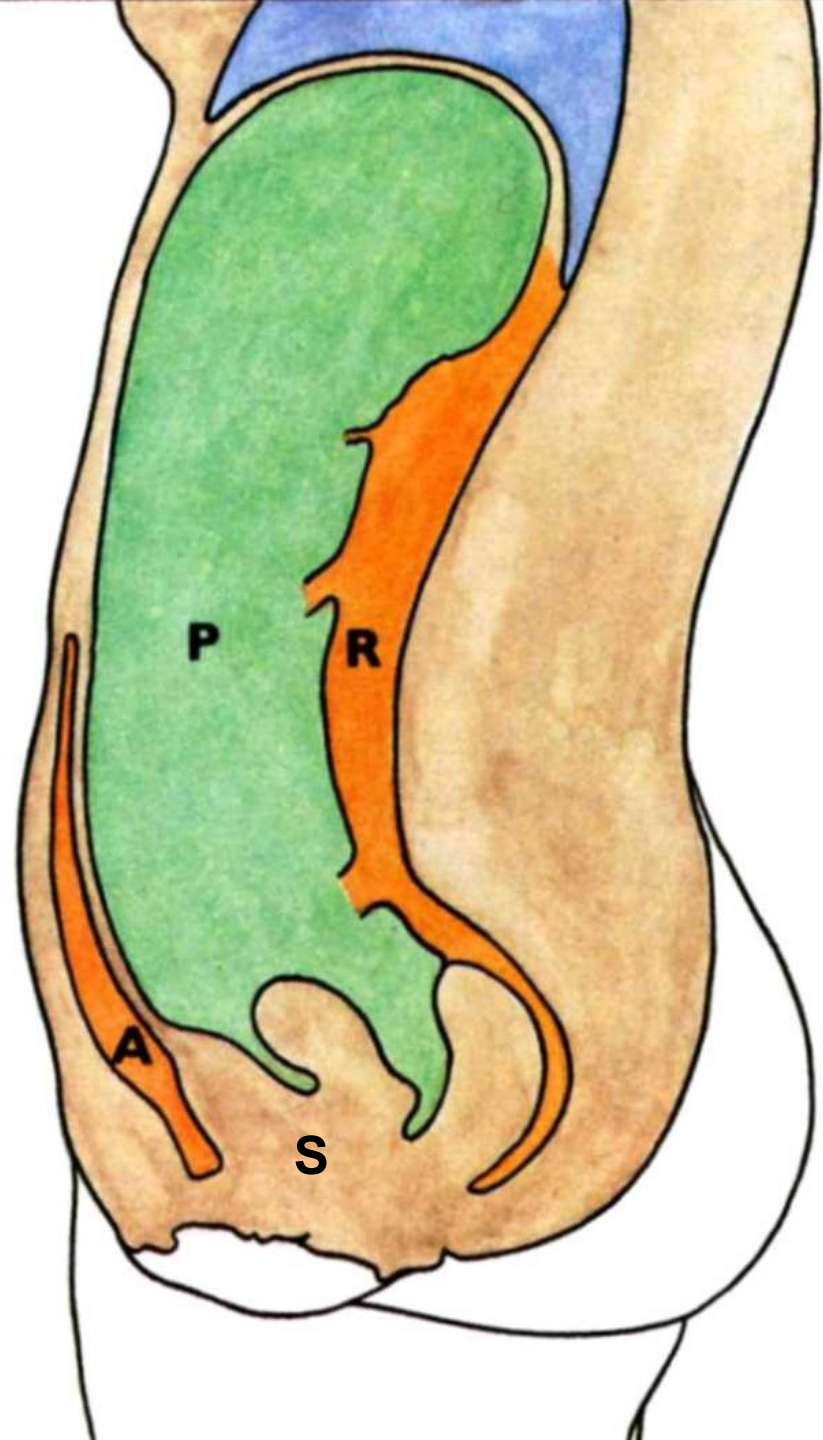
P – cavitas peritonealis

A – spatium preperitoneale

R – spatium retroperitoneale

**S – spatium subperitoneale
(infraperitoneale)**

ascites



Intraparitoneal organs:

Abdominal part of the oesophagus, stomach, superior part of the duodenum, jejunum, ileum, vermiform appendix, transverse colon, sigmoid colon, liver, spleen

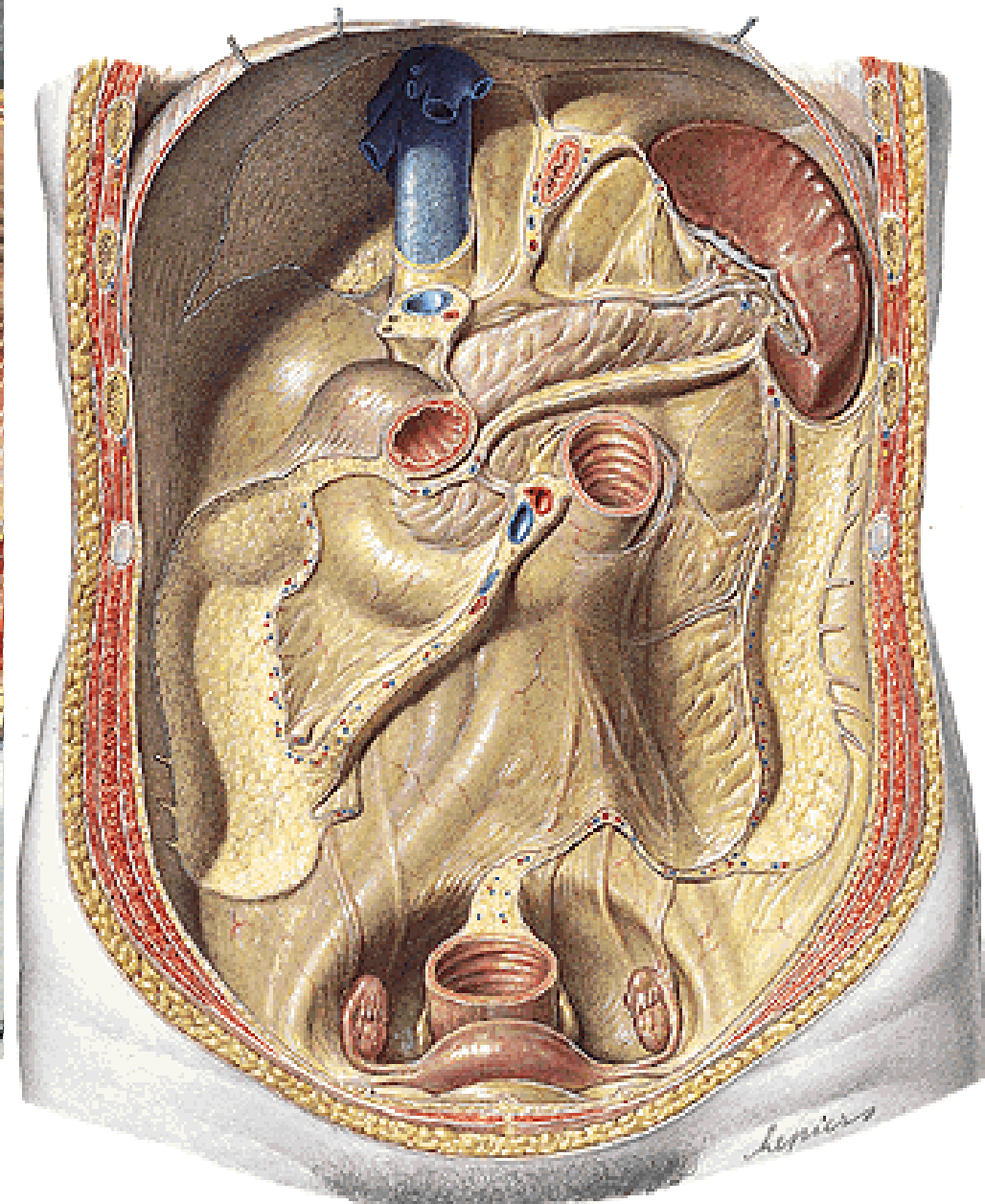
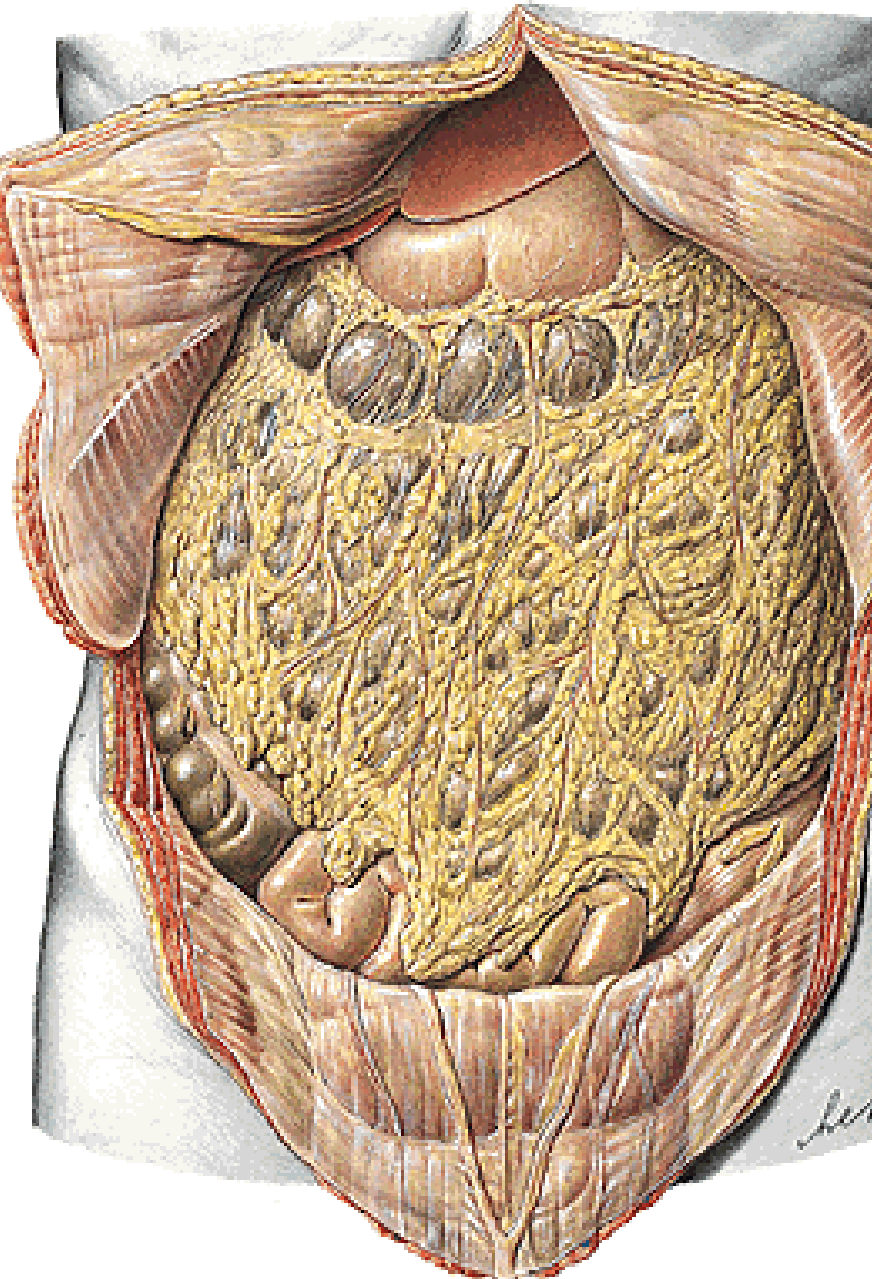
Secondarily retroperitoneal organs:

Most of the duodenum, pancreas, caecum, ascending colon, descending colon

Primarily retroperitoneal organs:

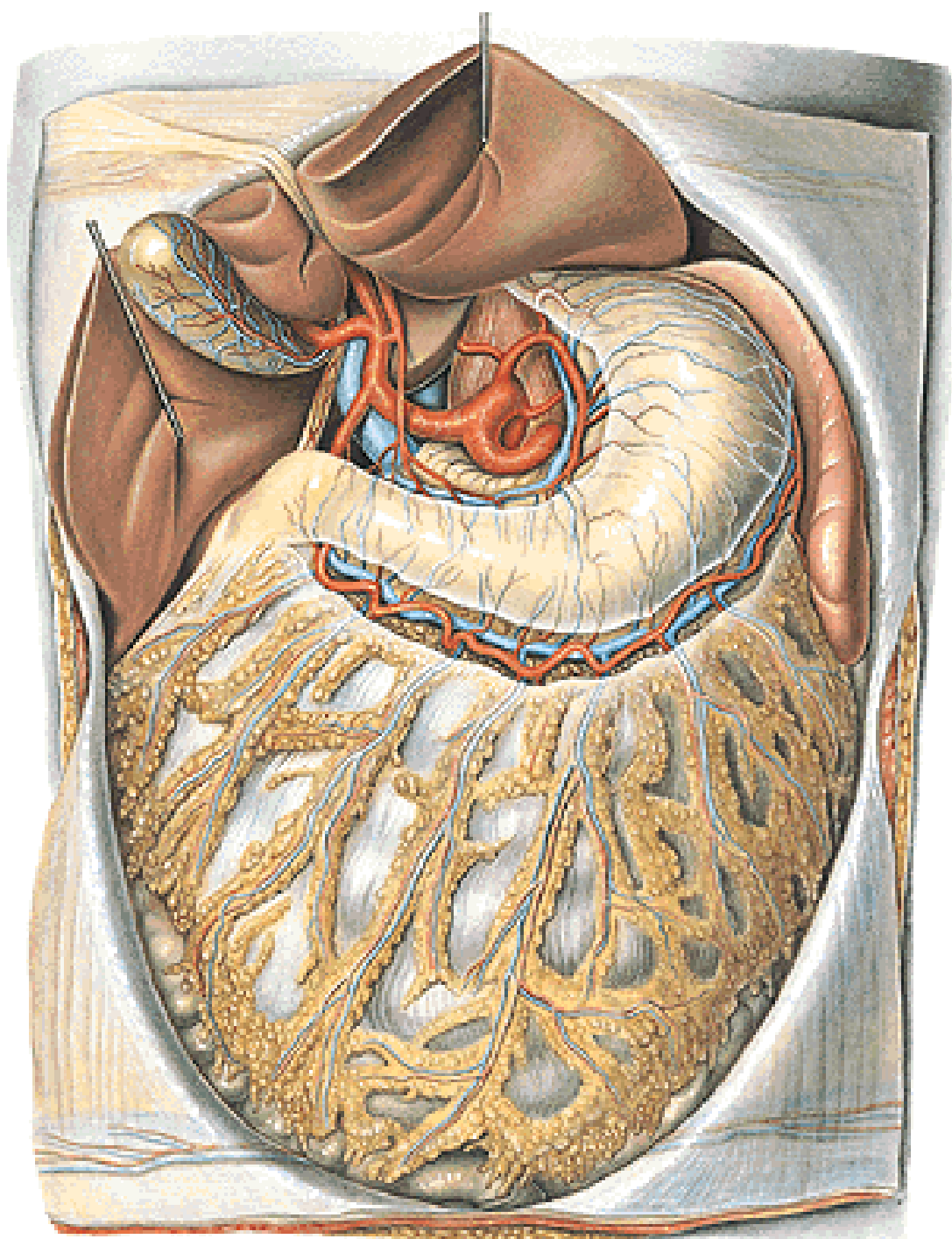
Kidneys + ureters, suprarenal glands, aorta, inferior vena cava

Cavitas peritonealis - pars supramesocolica, inframesocolica



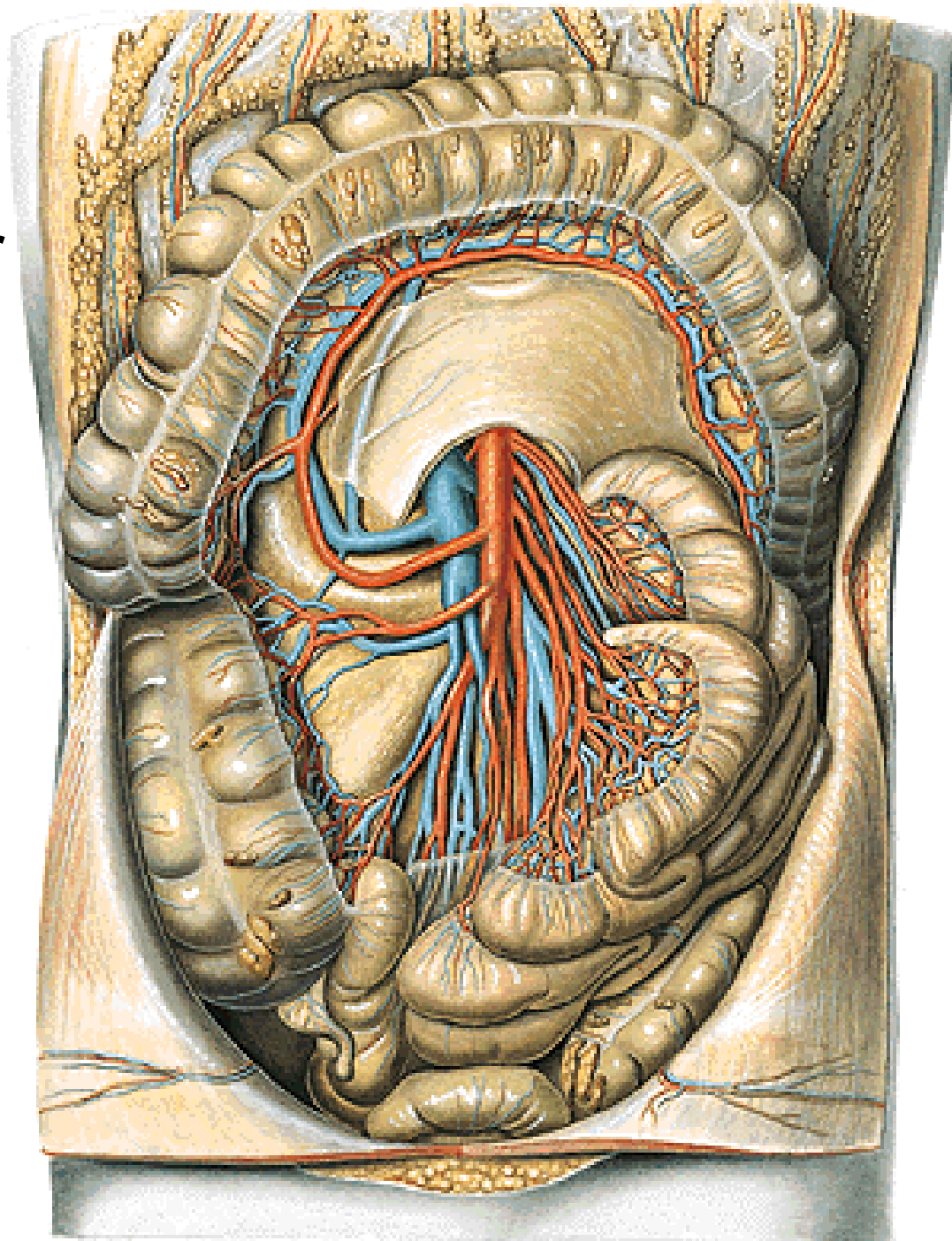
Pars supramesocolica

Truncus coeliacus



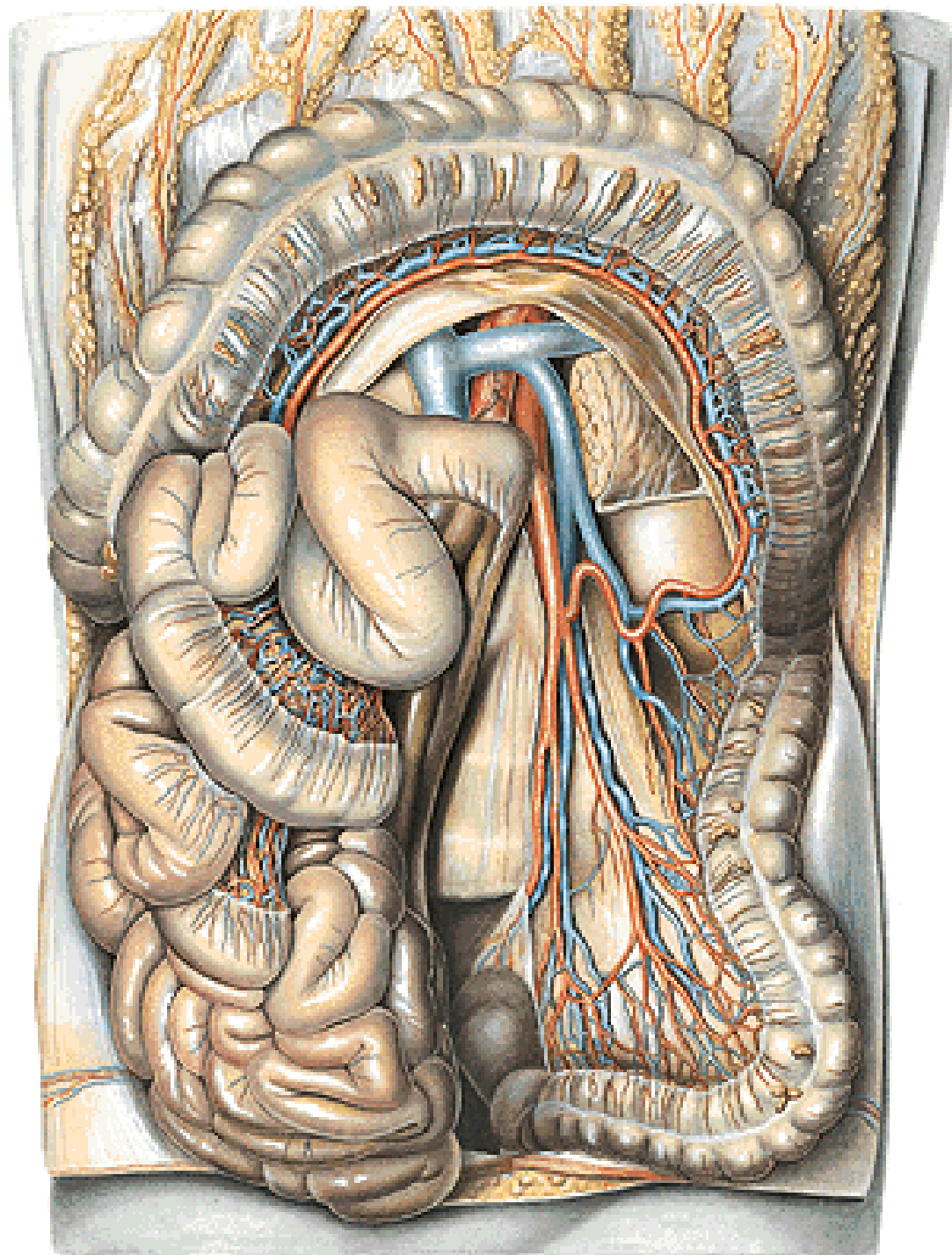
Pars inframesocolica

A. mesenterica superior



Pars inframesocolica

A. mesenterica inferior



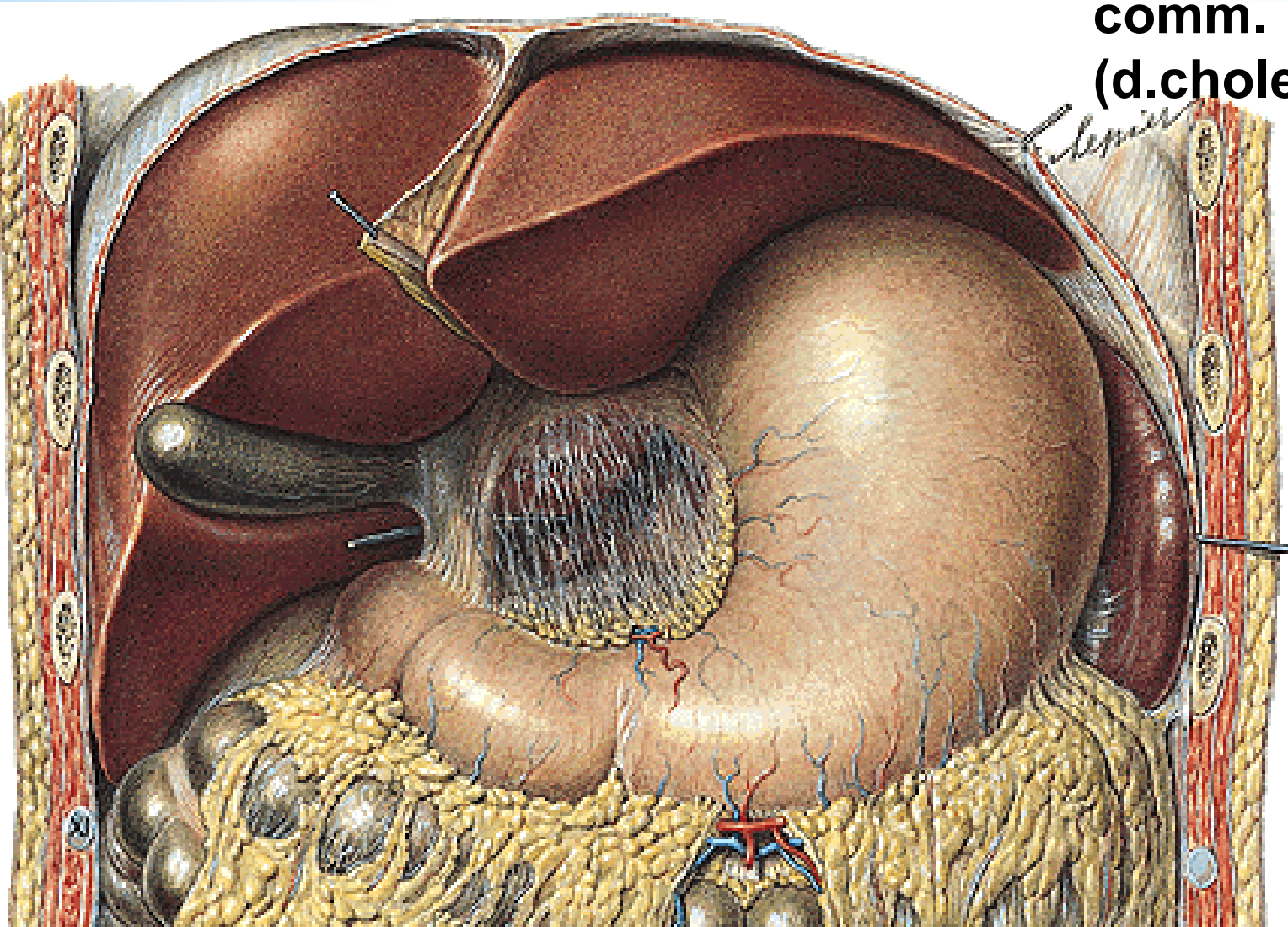
Omentum minus - lig. hepatogastricum

- lig. hepatoduodenale - a. hepatica propria

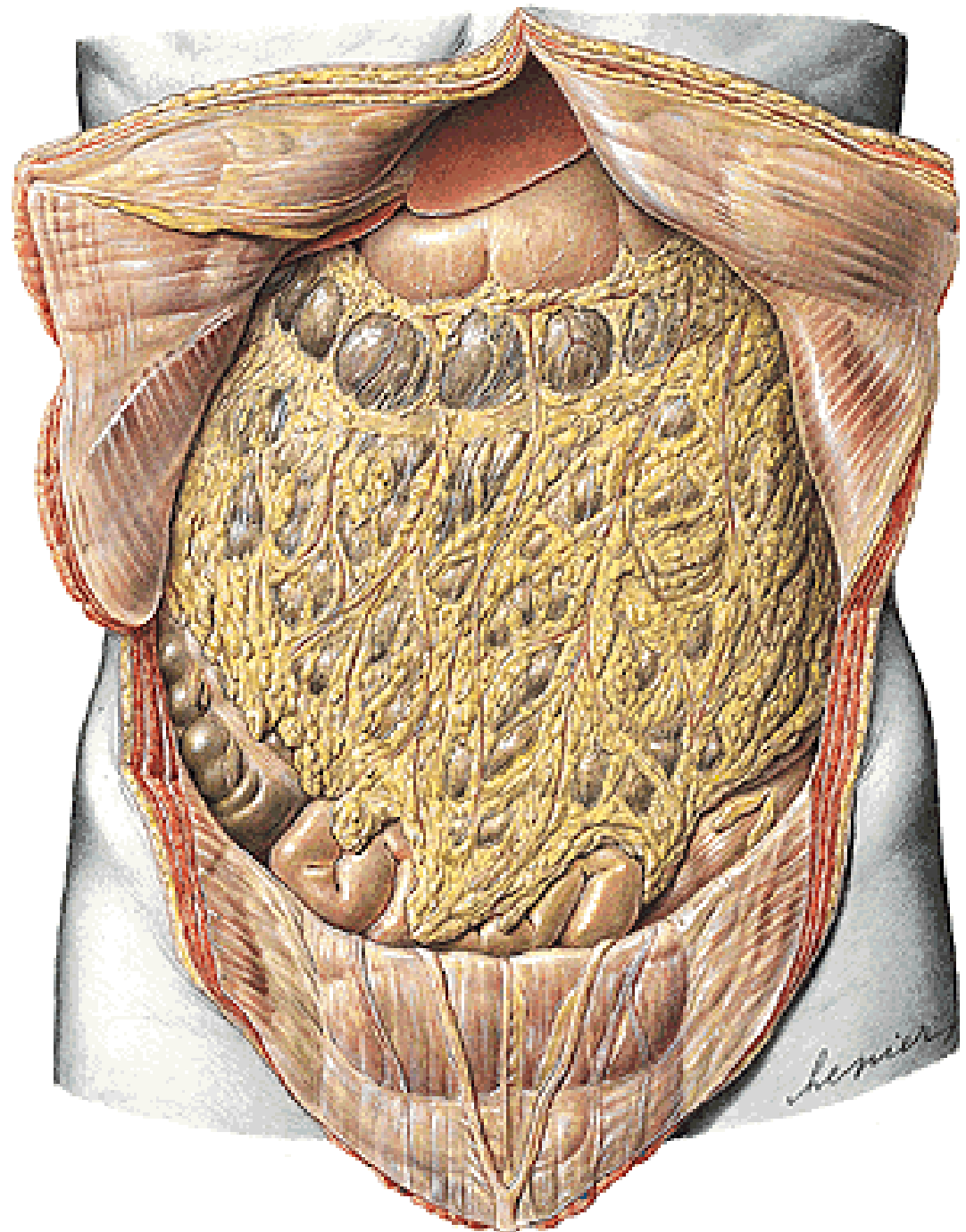
- v. portae

**- ductus hepaticus
comm.**

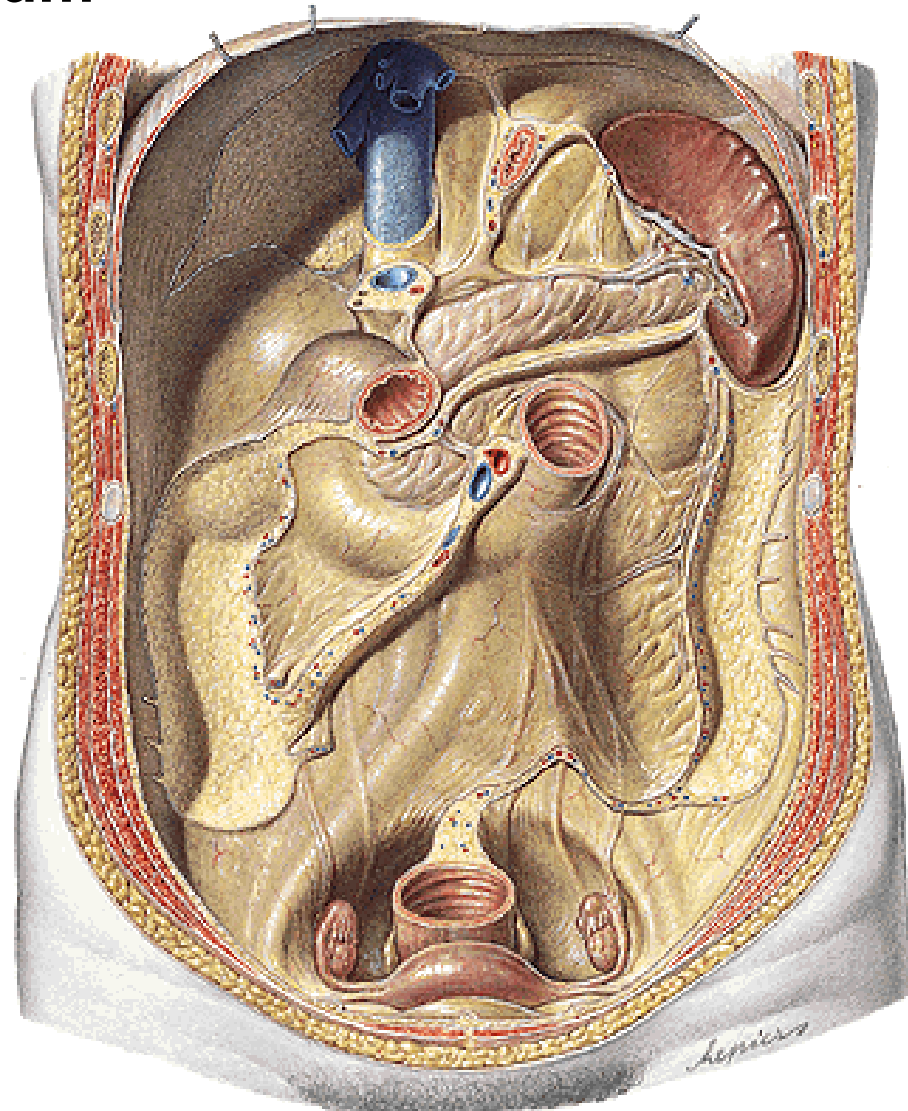
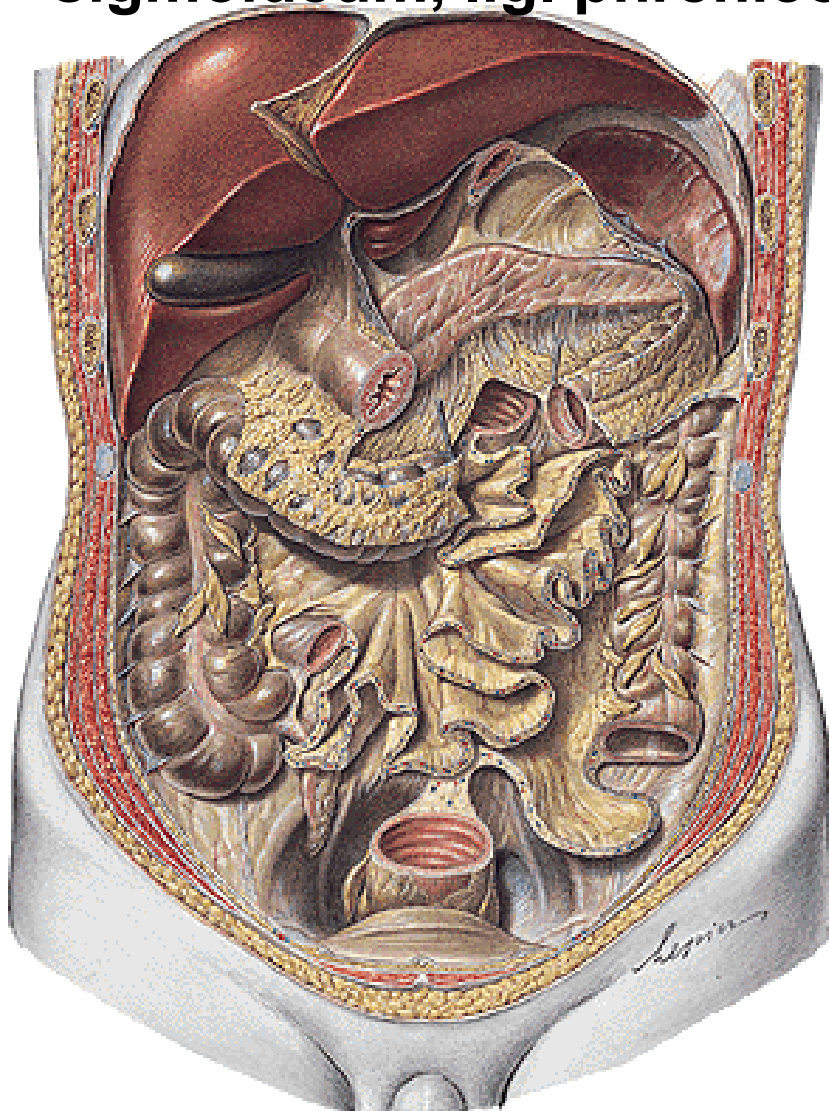
(d.choledochus)



Omentum majus
- lig. gastrocolicum



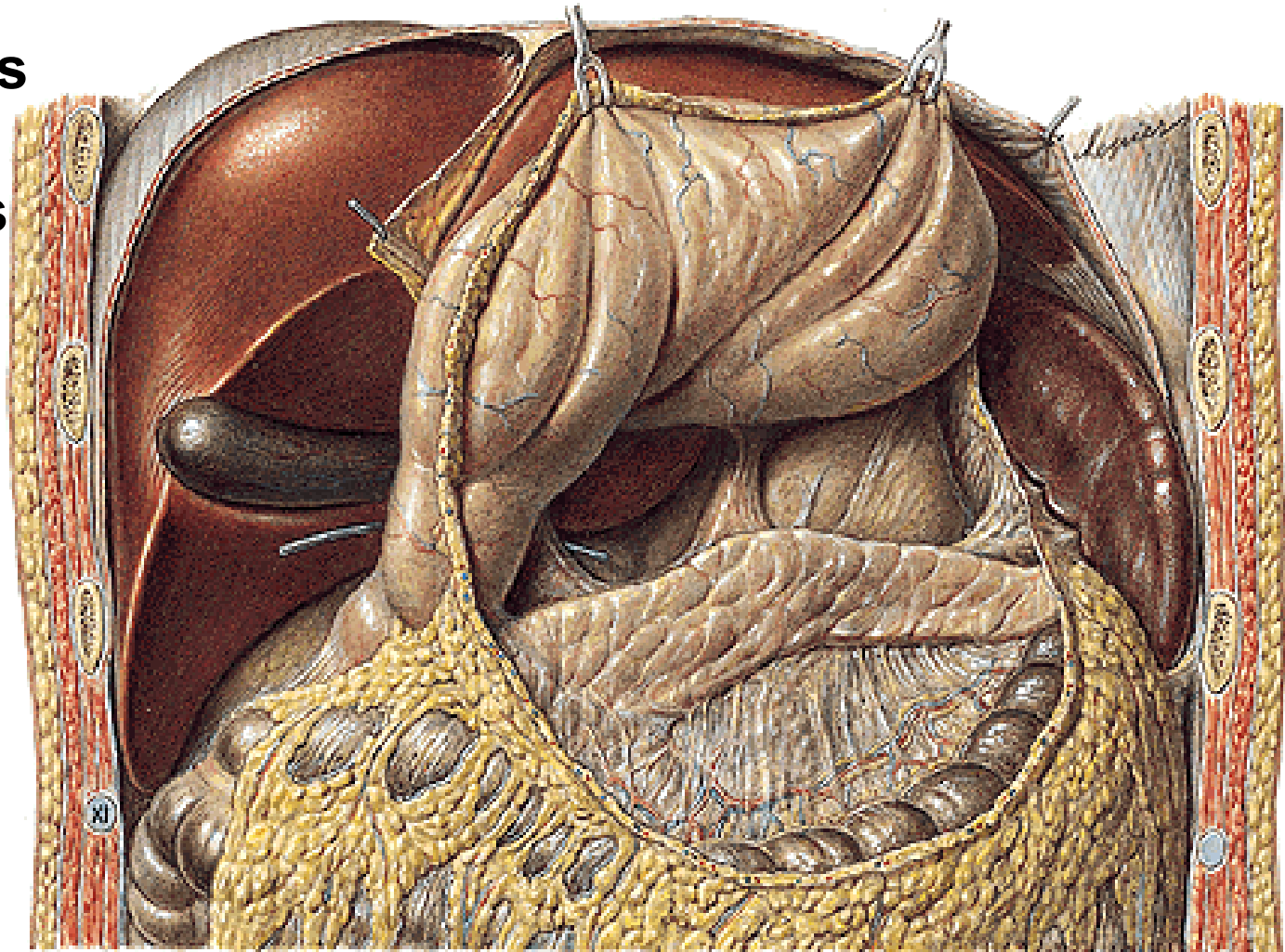
Lig. gastrosplenicum, phrenicosplenicum, splenorenale
Mesenterium – radix mesenterii
Mesocolon transversum, mesoappendix, mesocolon
sigmoideum, lig. phrenicocolicum



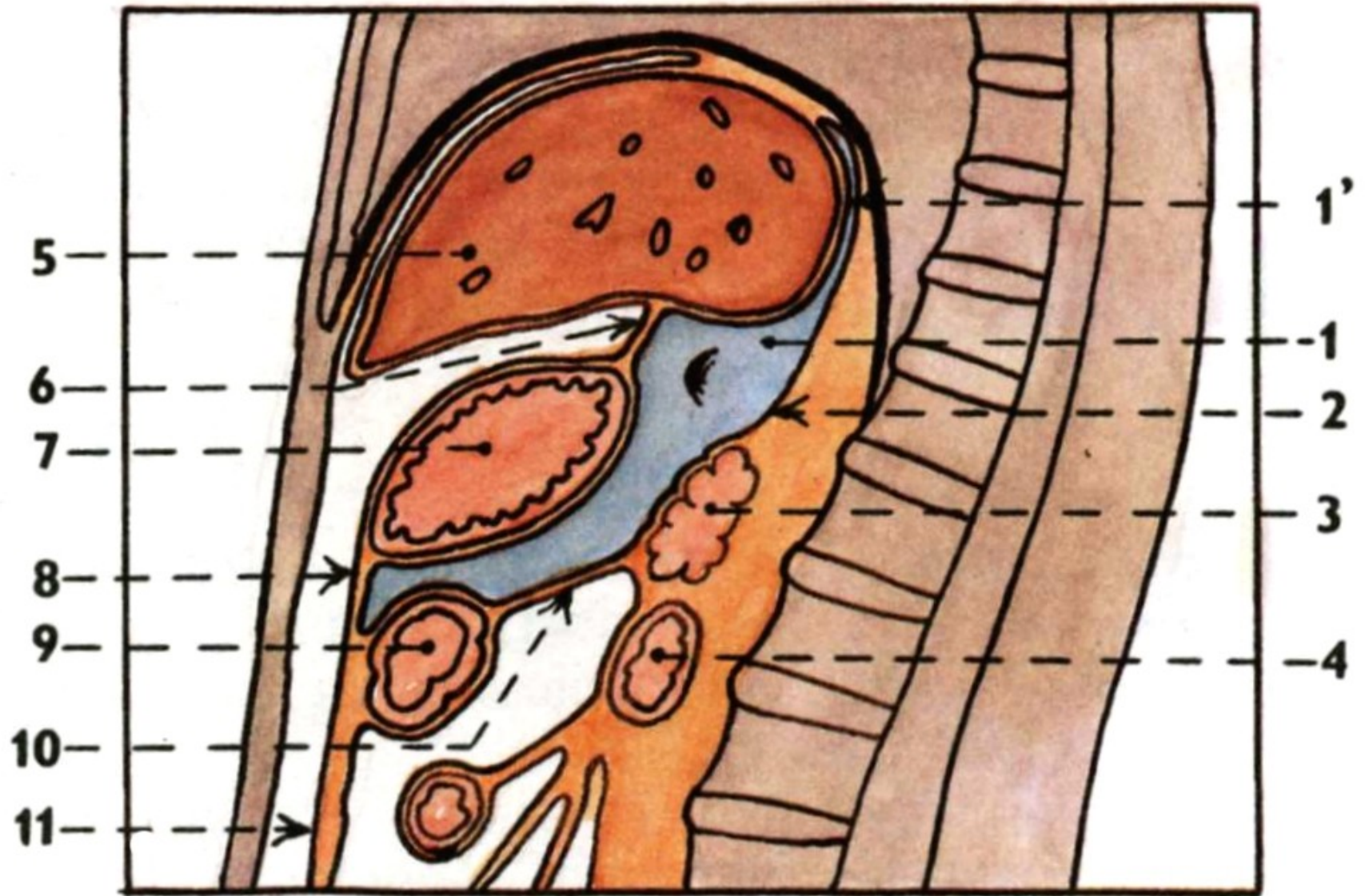
RECESSUS PERITONEI

Bursa omentalis

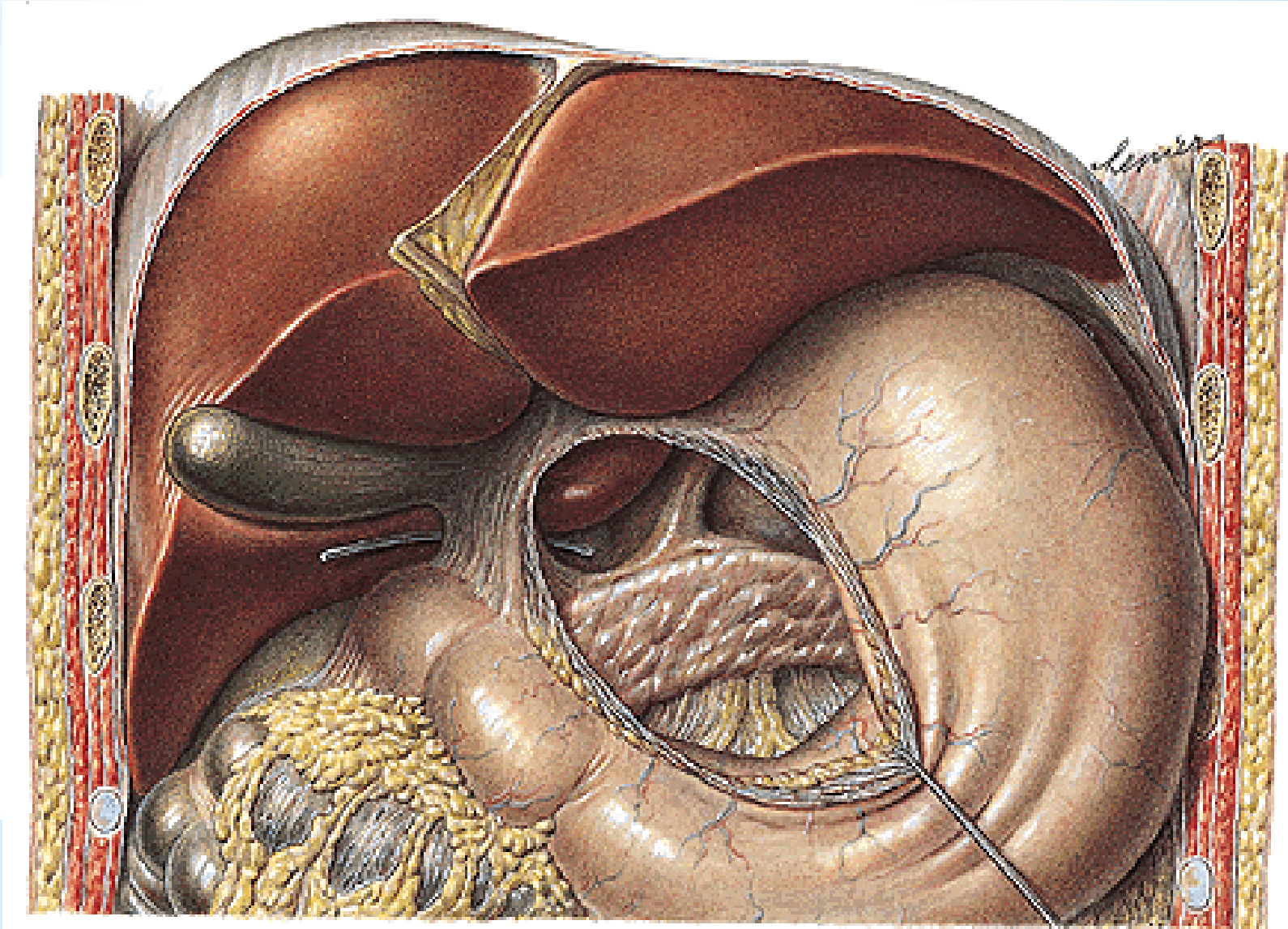
Internal hernias



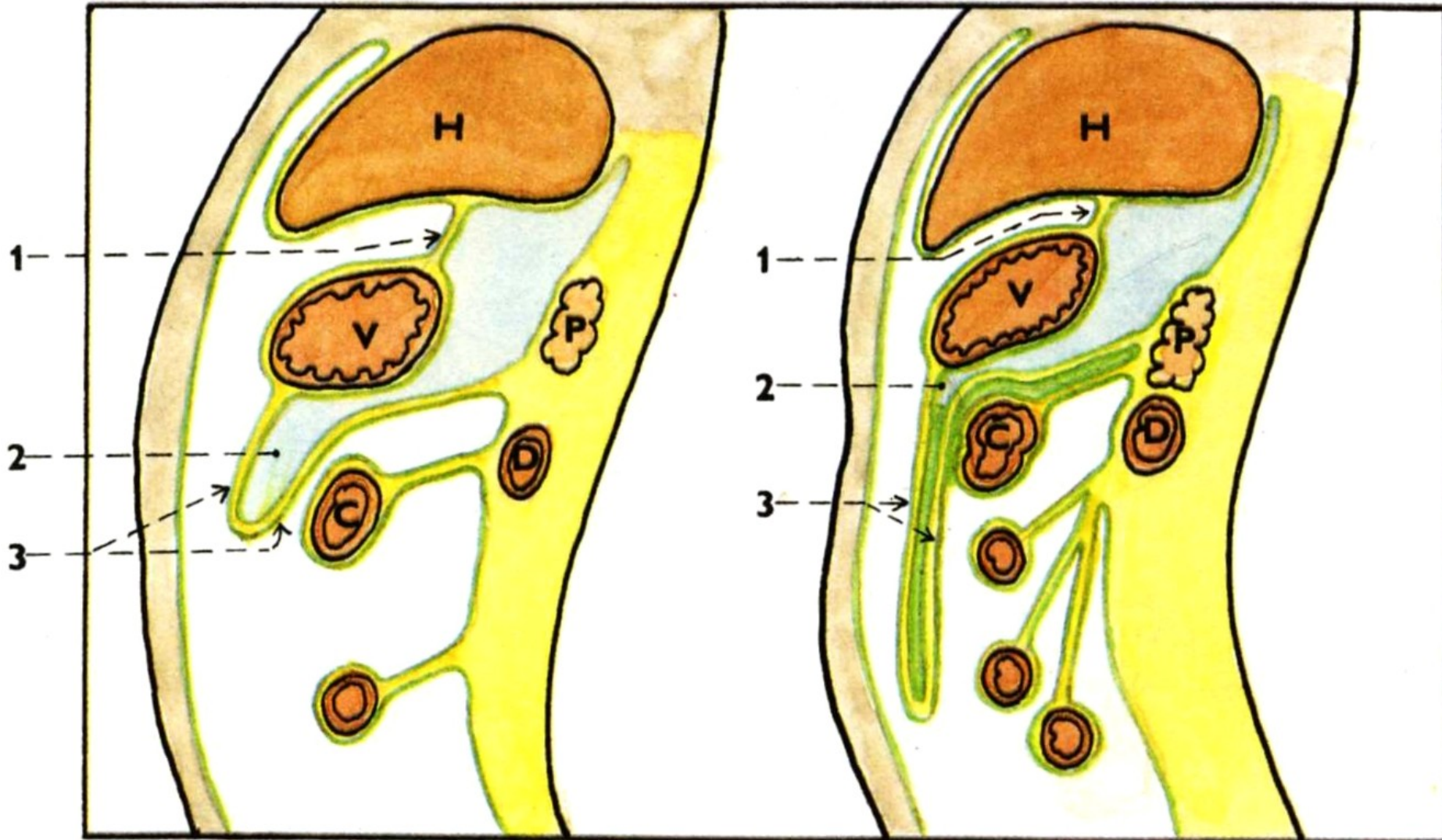
Bursa omentalis



Foramen omentale/epiploicum (Winslow) Recessus sup., splenicus, inf.



Recessus inferior bursae omentalis

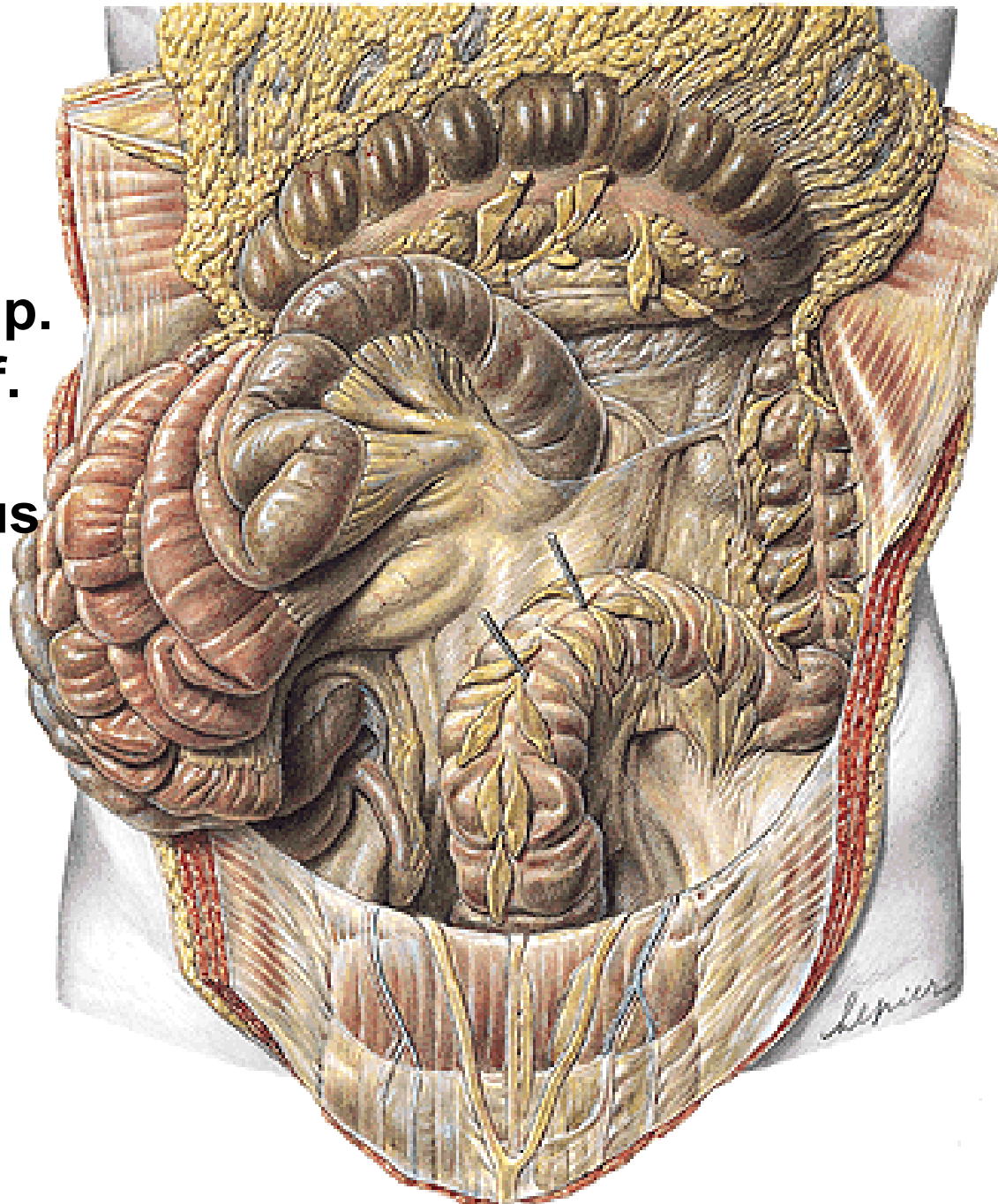


**Recessus duodenalis
sup., inf., sinister,
retroduodenalis**

**Recessus ileocaecalis sup.
Recessus ileocaecalis inf.**

Recessus intersigmoideus

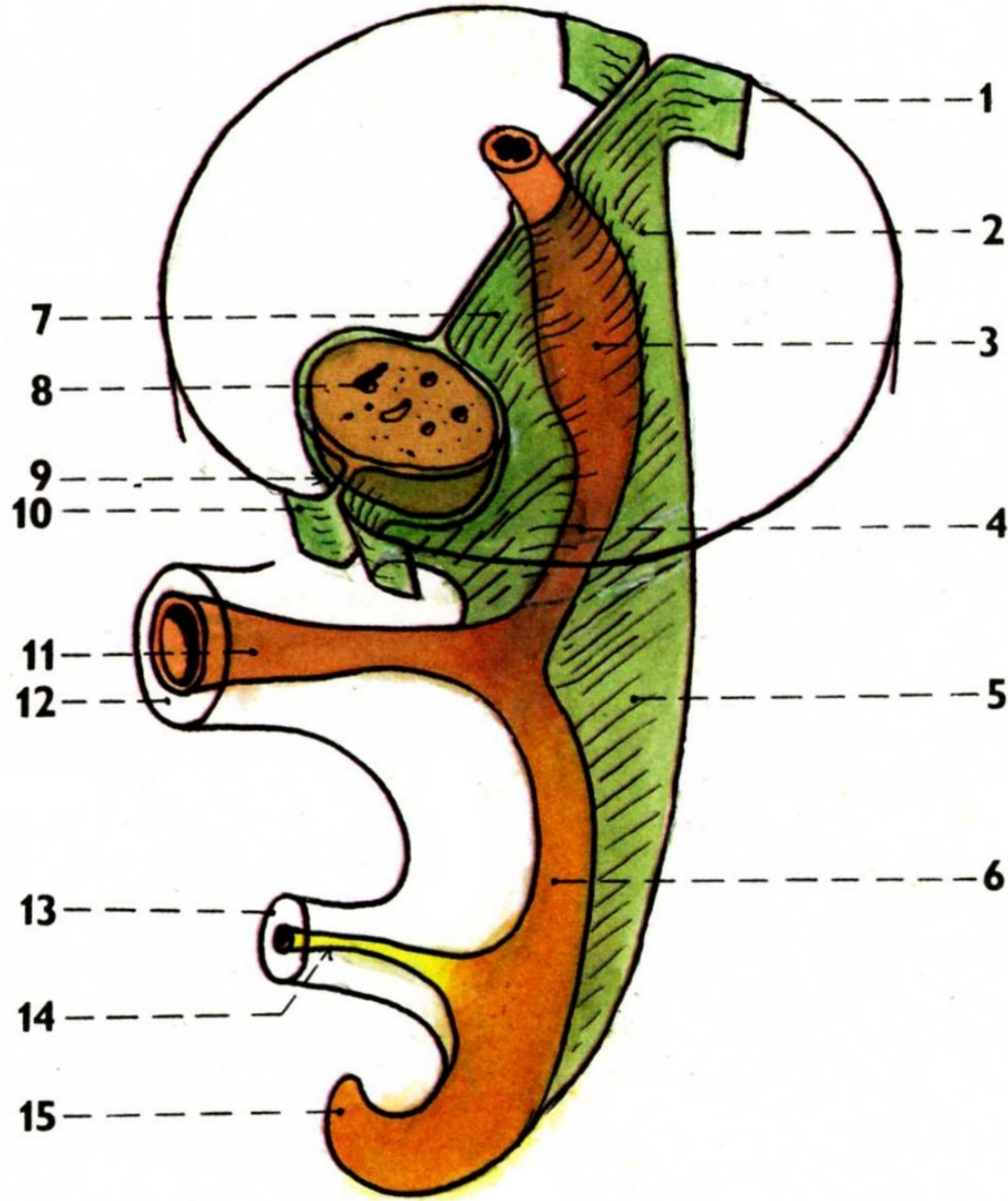
Recessus paracolici



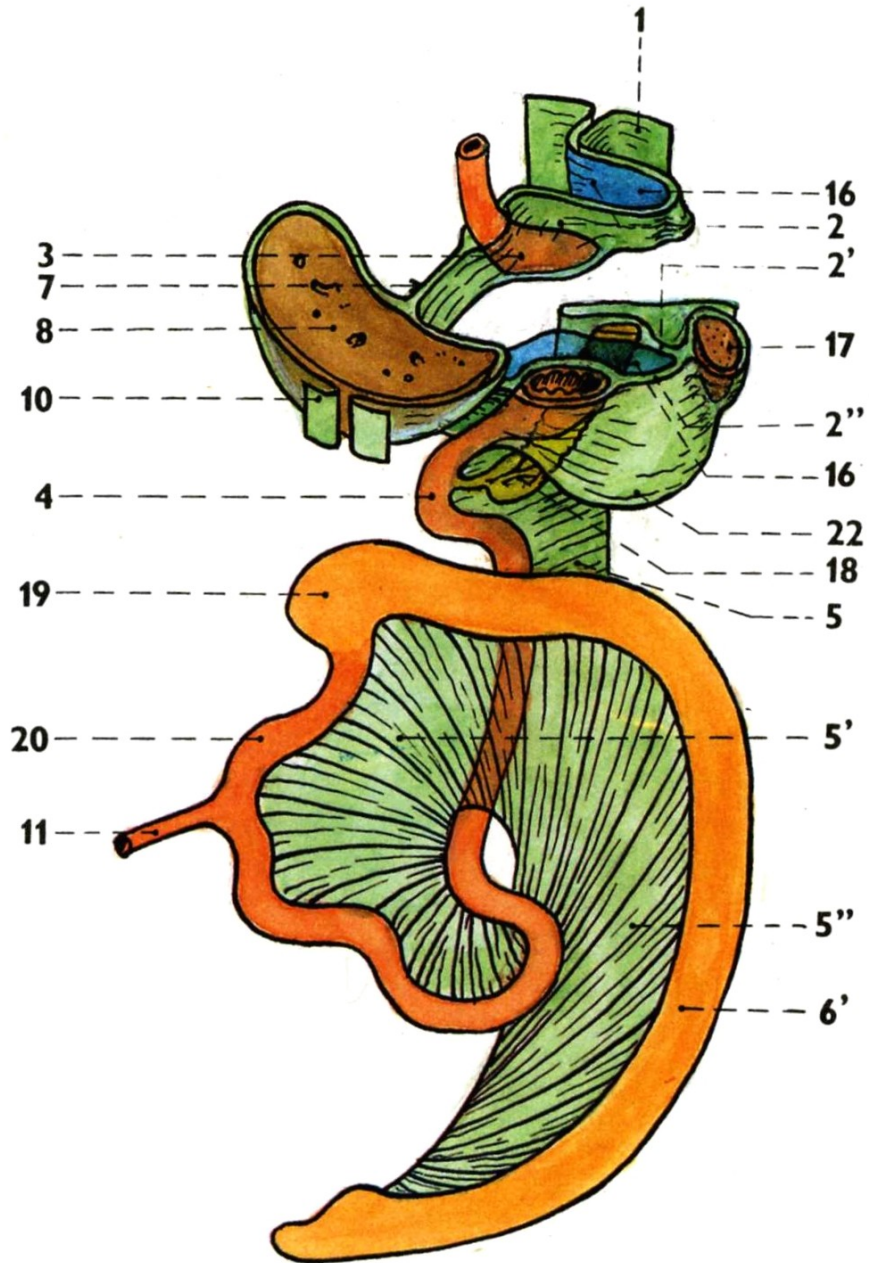
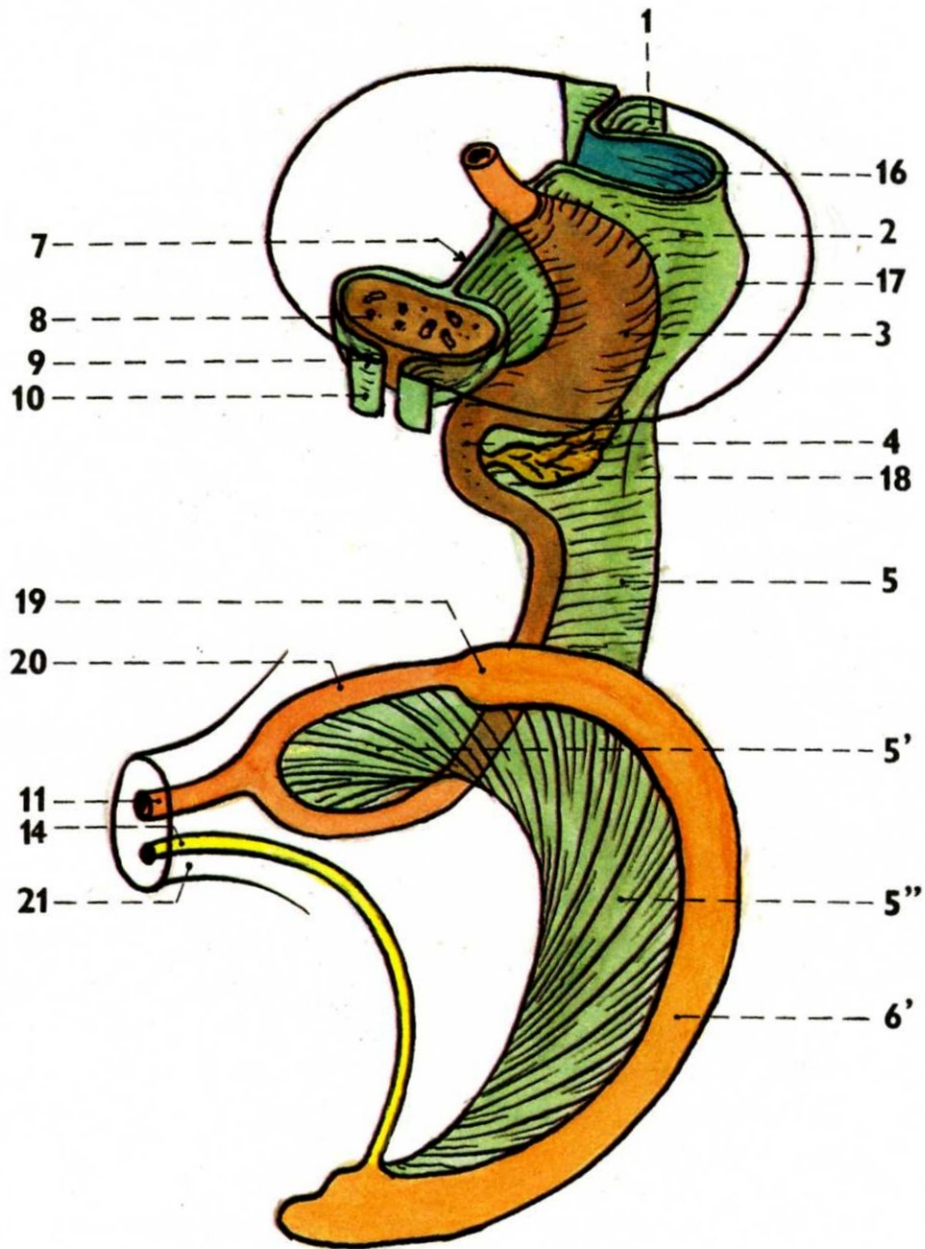
Development of the peritoneum

Mesenterium dorsale

Mesogastrium ventrale

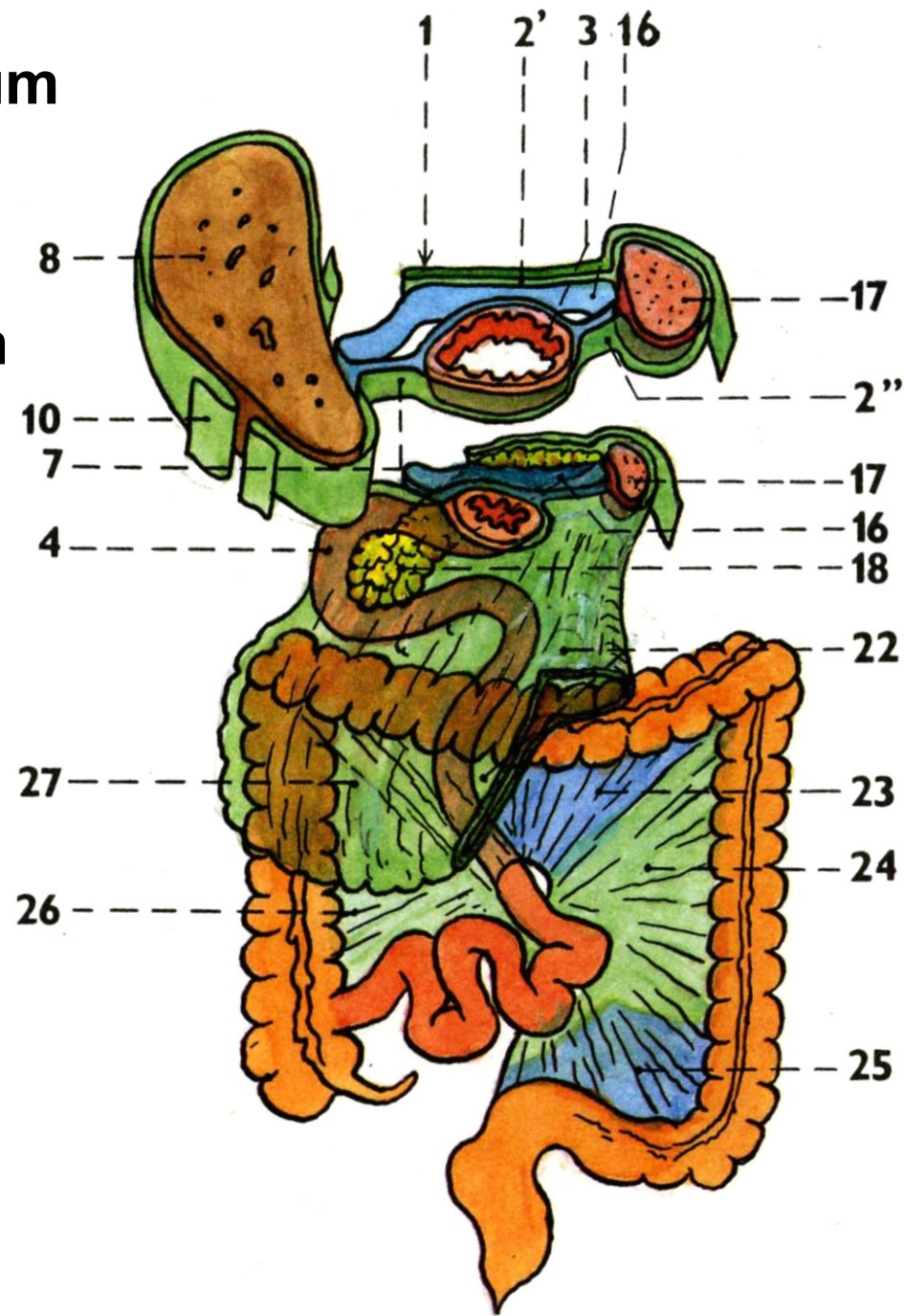


Development of the peritoneum



Development of the peritoneum

- 23. mesocolon transversum
- 24. mesentery of the colon descendens
- 25. mesocolon sigmoideum
- 26. mesentery of the colon ascendens
- 27. omentum majus





Illustrations 27-31 were copied from:

Čihák R: Anatomie 2 (Splanchnologia). Avicenum, zdravotnické nakladatelství, Praha, 1988.

Remaining illustrations, photographs, and radiographs were copied from:

**Atlas der Anatomie des Menschen/Sobotta.
Putz,R., und Pabst,R. 20. Auflage. München:
Urban & Schwarzenberg, 1993**