

ADJECTIVES OF THE 3RD DECLENSION

A) CLASSIFY THE ADJECTIVES INTO TWO GROUPS ACCORDING TO THEIR DECLENSIONS.

B) GIVE THE NUMBER OF THEIR NOMINATIVE SINGULAR FORMS.

centralis, e

opticus, a, um

parietalis, e

ischiadicus, a, um

tenuis, e

crassus, a, um

ascendens, ntis

sigmoideus, a, um

suprarenalis, e

thyroideus, a, um

biliaris, e

felleus, a, um

longus, a, um

brevis, e

multiplex, icis

apertus, a, um

cysticus, a, um

migrans, ntis

solaris, e

ruber, a, um

rectus, a, um

biceps, itis

acutus, a, um

catarrhalis, e

fractura () + multiplex, icis
+ apertus, a, um

ren () + cysticus, a, um
+ migrans, ntis

eczema () + solaris, e
+ ruber, a, um

urocystitis () + acutus, a, um
+ catarrhalis, e

A) GIVE THE GENDER OF THE NOUNS.

B) JOIN THE NOUNS WITH THE ADJECTIVES IN THE CORRECT FORM.

canalis () + centralis, e

+ opticus, a, um

tuber () + ischiadicus, a, um

+ frontalis, e

intestinum () + tenuis, e

+ crassus, a, um

musculus () + rectus, a, um

+ biceps, itis

colon () + ascendens, ntis
+ sigmoideus, a, um

glandula () + suprarenalis, e
+ thyroideus, a, um

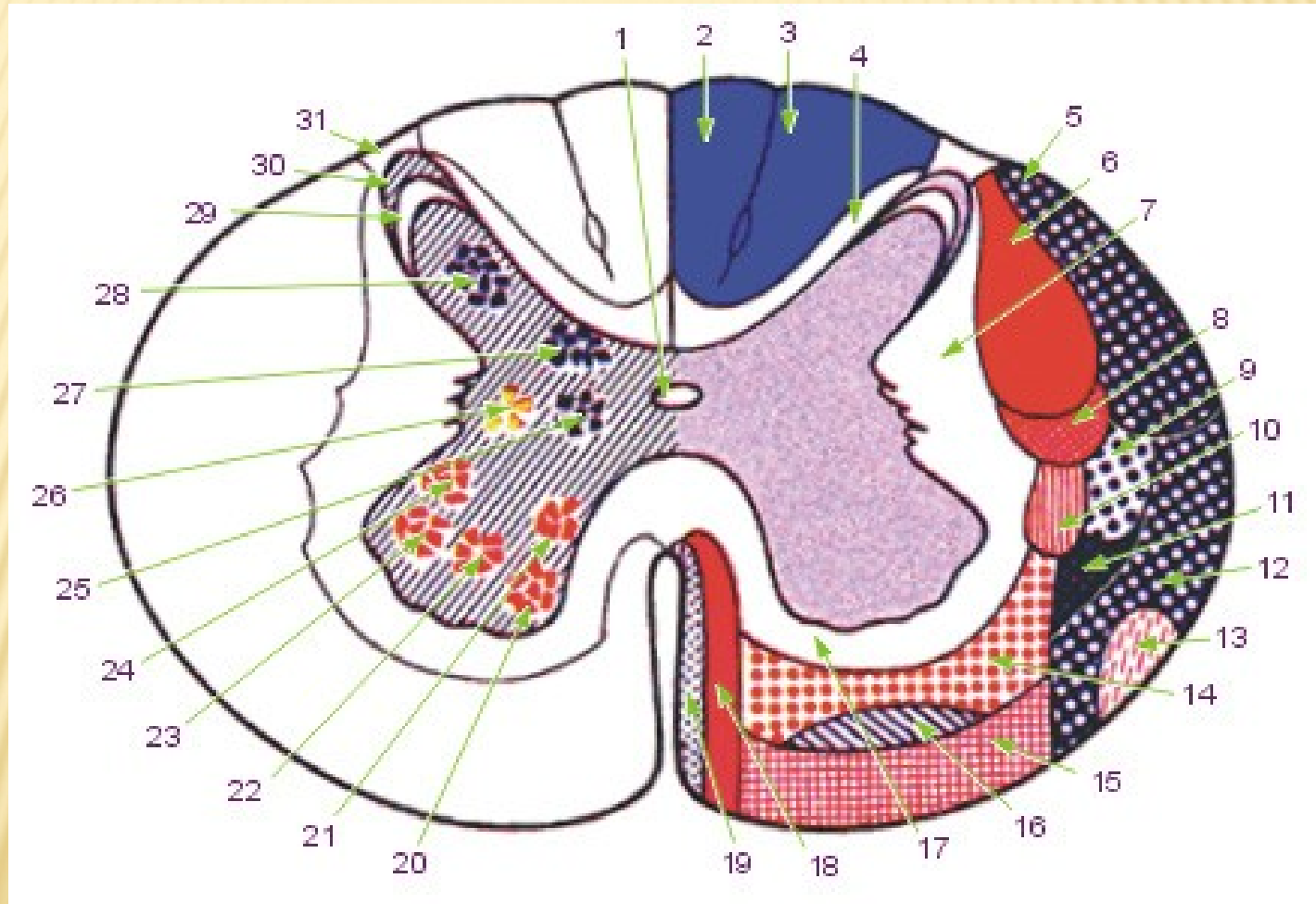
vesica () + biliaris, e
+ felleus, a, um

caput () + longus, a, um
+ brevis, e

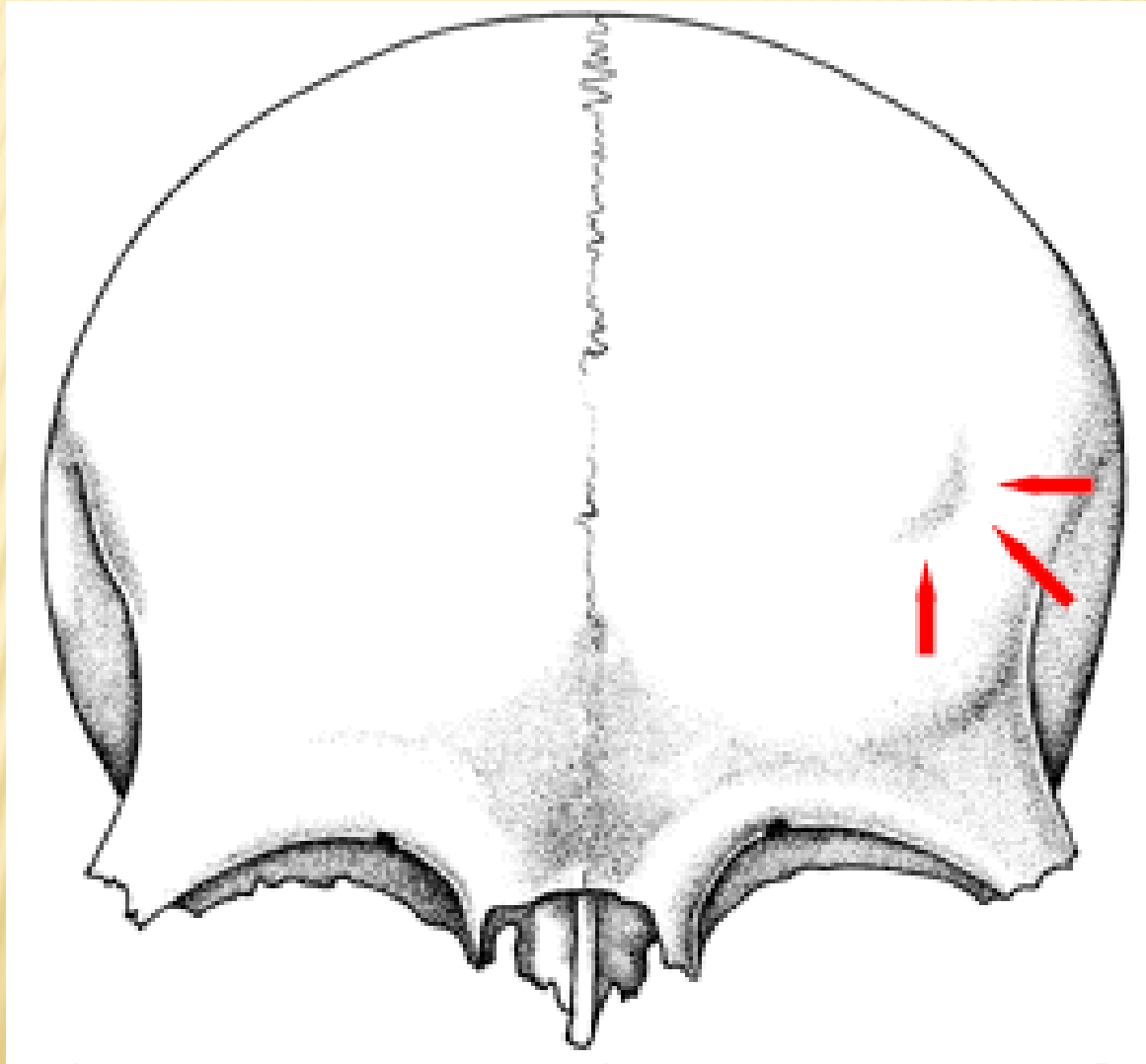
A) JOIN THE ANATOMICAL TERMS FROM THE PREVIOUS EXERCISE WITH THE WORD *STRUCTURA* WHERE APPROPRIATE.

B) JOIN THE CLINICAL TERMS FROM THE PREVIOUS EXERCISE WITH THE WORD *THERAPIA* WHERE APPROPRIATE.

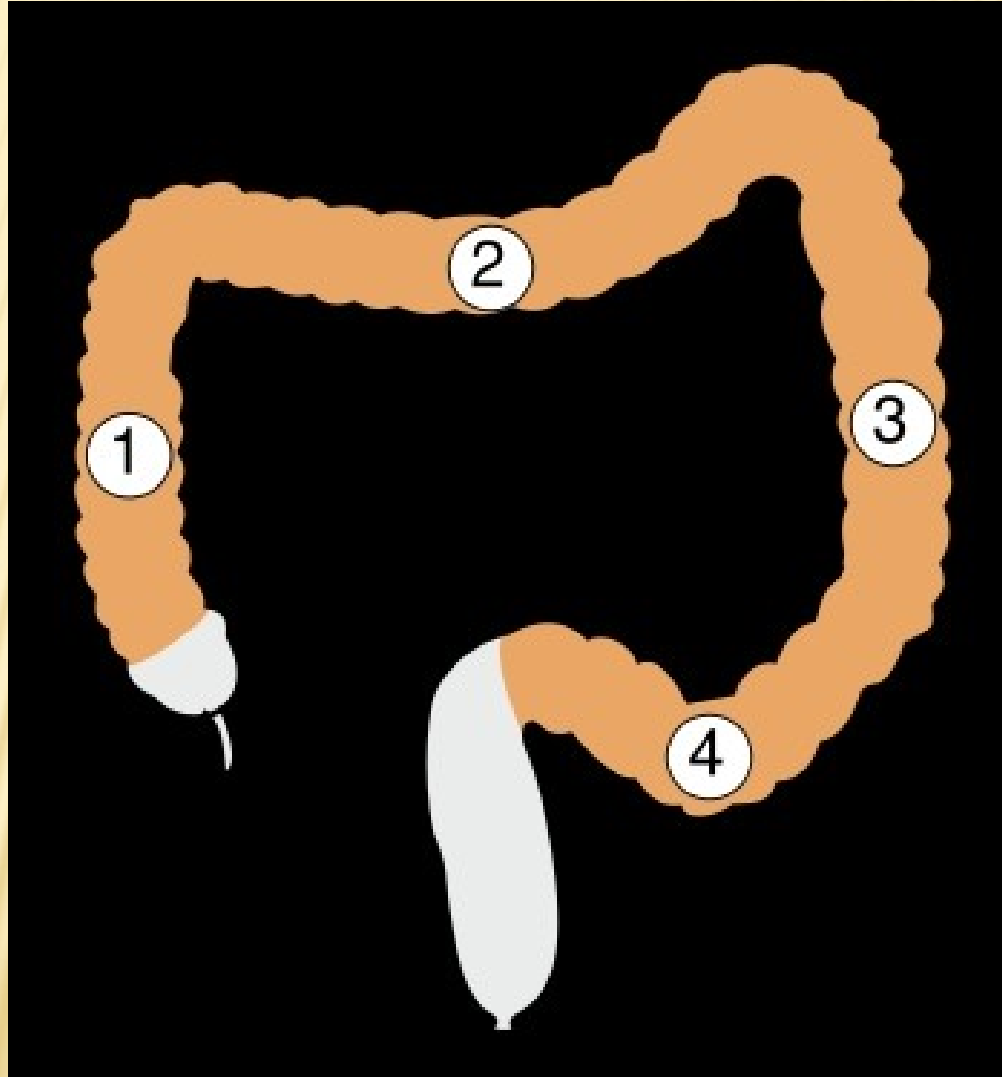
CANALIS CENTRALIS



TUBER FRONTALE



COLON ASCENDENS/SIGMOIDEUM



JOIN THE TERMS WITH THE PREPOSITION *IN* TO EXPRESS DIRECTION/POSITION.

term	in + direction propter	in + position cum/sine
intestinum crassum/tenue		
colon sigmoideum/ascendens		
vesica fellea/biliaris		
musculus rectus/biceps		
fractura aperta/multiplex		
urocystitis acuta/catarrhalis		

A) FILL IN MISSING ENDINGS IN THE PICTURE.

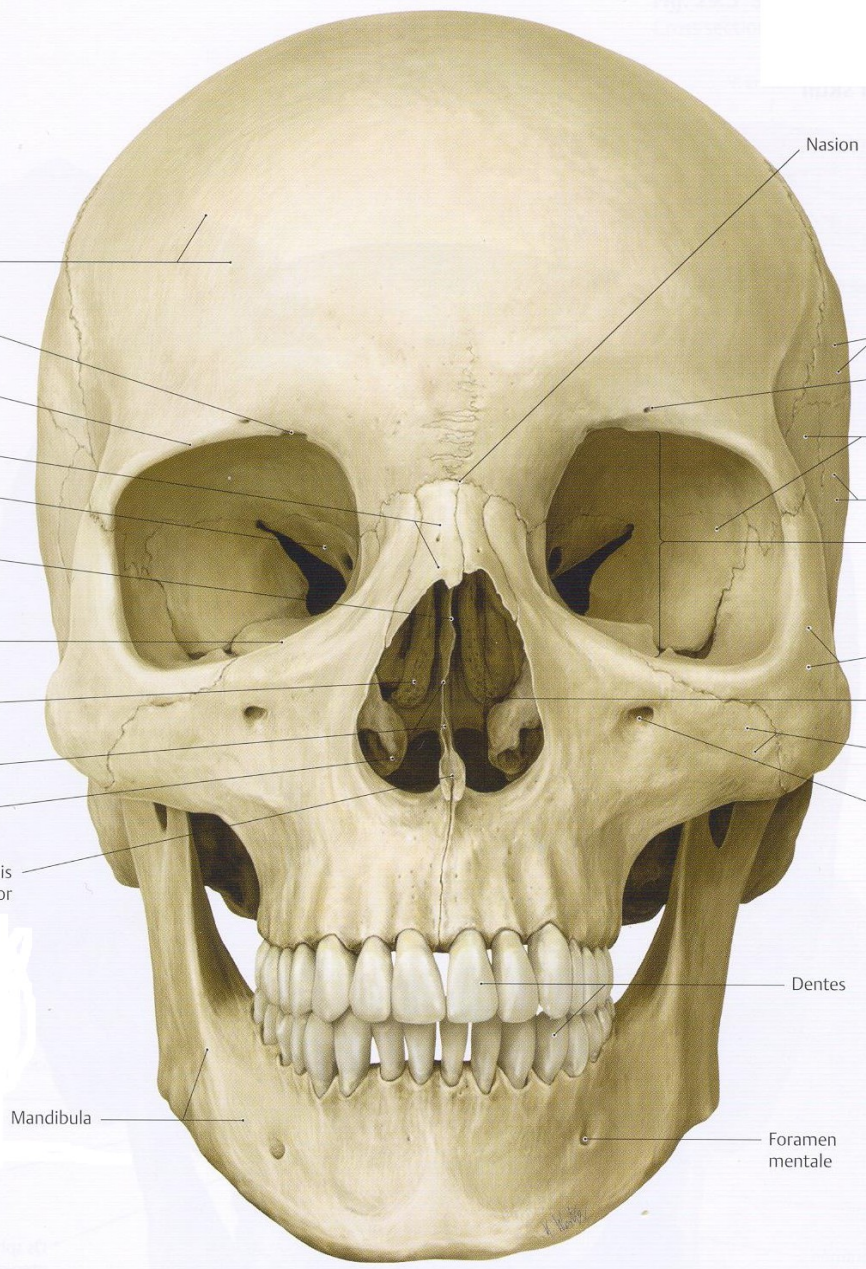
B) JOIN THE TERMS FROM TASK A) WITH THE WORD *FRACTURA* WHERE APPROPRIATE.

C) PUT THE TERMS FROM TASK A) IN PLURAL WHERE APPROPRIATE.

B) JOIN THE TERMS FROM TASK C) WITH THE WORD *FRACTURAE* WHERE APPROPRIATE.

- 1) Os frontal__
- 2) Incisura frontal__
- 3) Margo supraorbital__
- 4) Os sphenoidal__, ala minor
- 5) Os ethmoidal__, lamina perpendicularis
- 6) Margo infraorbital__
- 7) Concha nasal__ medi__

- Vomer
- Concha nasalis inferior
- Spina nasalis anterior



- 8) Os parietal__
- 9) Incisura supraorbital__
- 10) Os sphenoidal__, ala major
- 11) Os temporal__
- 12) Os zygomatic__
- 13) Foramen infraorbital__

GIVE THE NOUN WHICH THE UNDERLINED ADJECTIVES COME FROM, ITS GENITIVE SINGULAR FORM, GENDER, DECLENSION AND MEANING

term	nom. sg.	gen. sg.	gender	declension	meaning
os <u>frontale</u>					
margo <u>supraorbitalis</u>					
concha <u>nasalis</u> media					
os <u>parietale</u>					
os <u>temporale</u>					
os <u>occipitale</u>					

FORM GRAMMATICALLY CORRECT ANATOMICAL TERMS, DO NOT CHANGE THE WORD ORDER.

fossula (pl.) --- tonsillaris, e (pl.)

rete --- articularis, e --- cubitus

musculus --- biceps, itis --- brachium

geniculum --- canalis --- nervus --- facialis, e

ligamentum --- teres, etis --- hepar/uterus

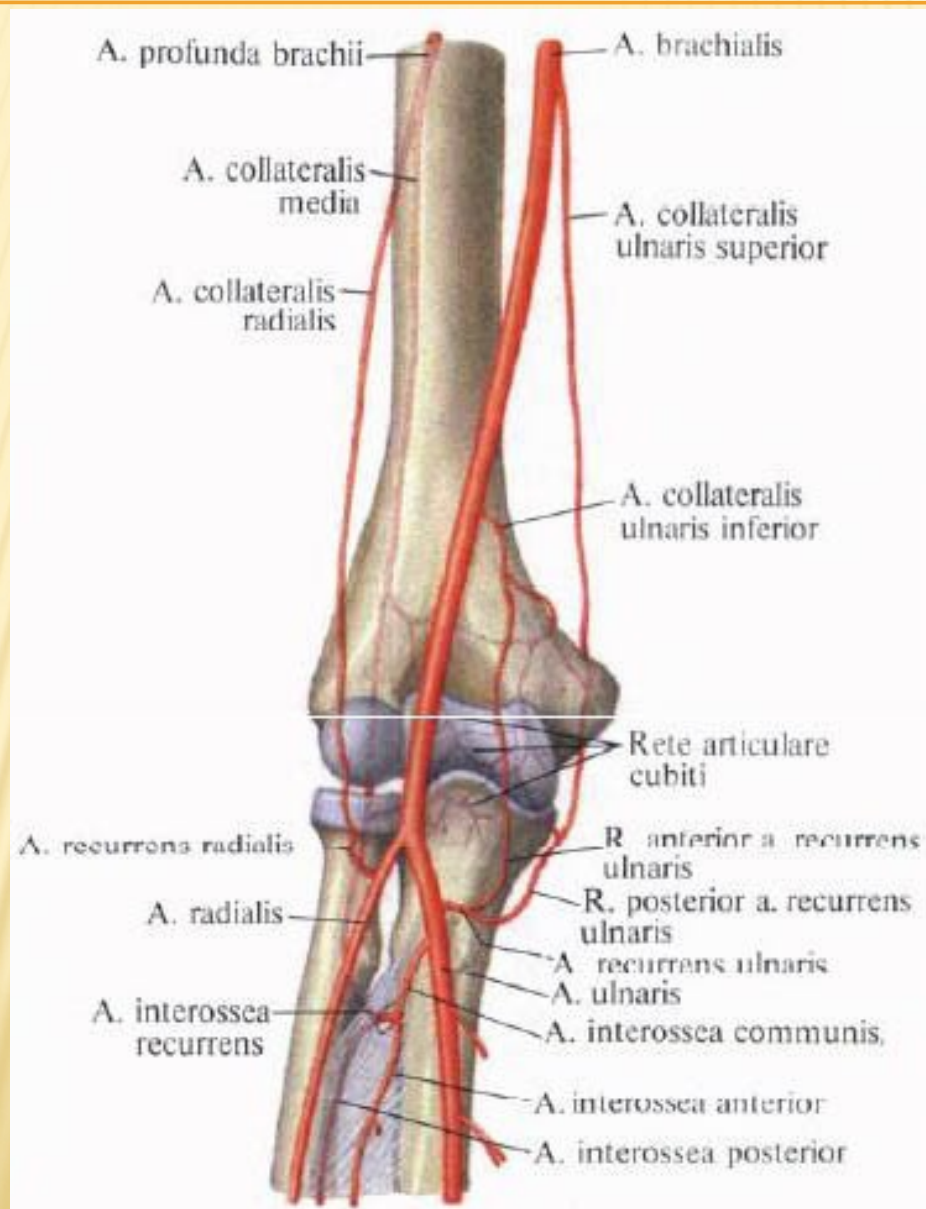
arteria --- iliacus, a, um --- communis, e

pars --- descendens, ntis --- duodenum

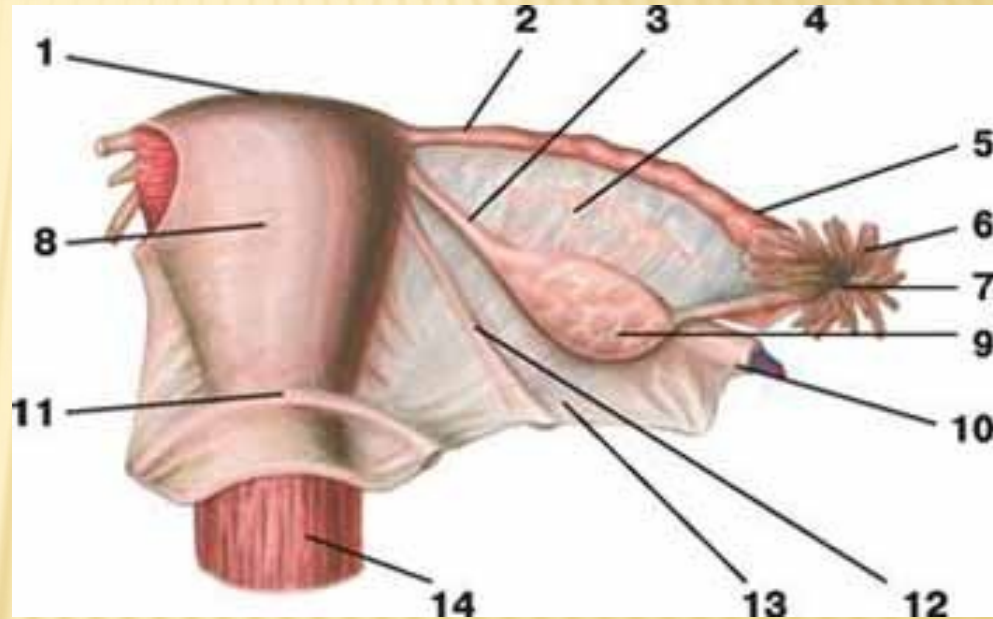
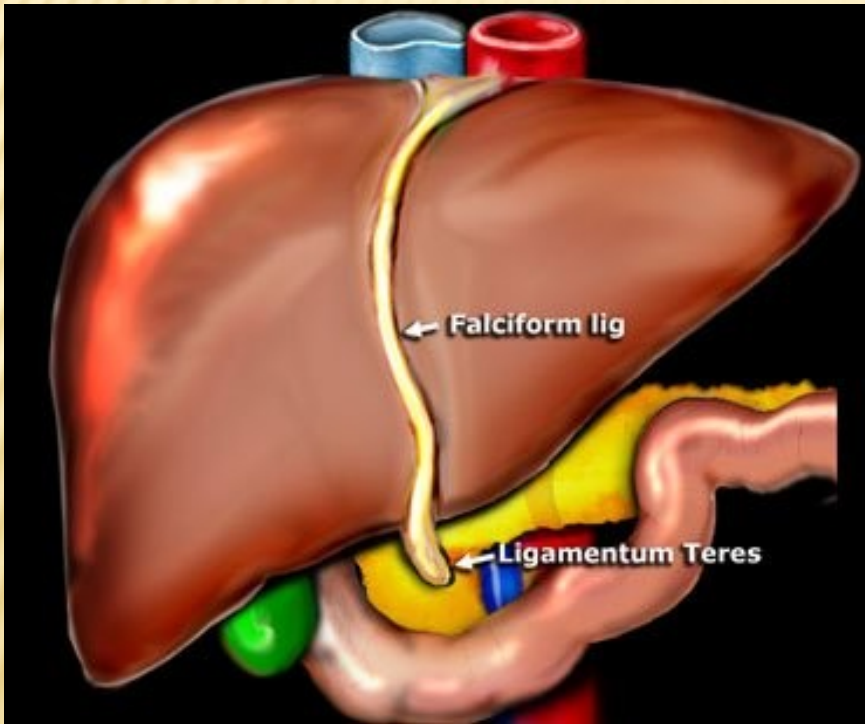
ramus --- communicans, antis --- cum --- nervus --- ulnaris, e

musculus (pl.) --- levator (pl.) --- costa (pl.) --- brevis, e (pl.)

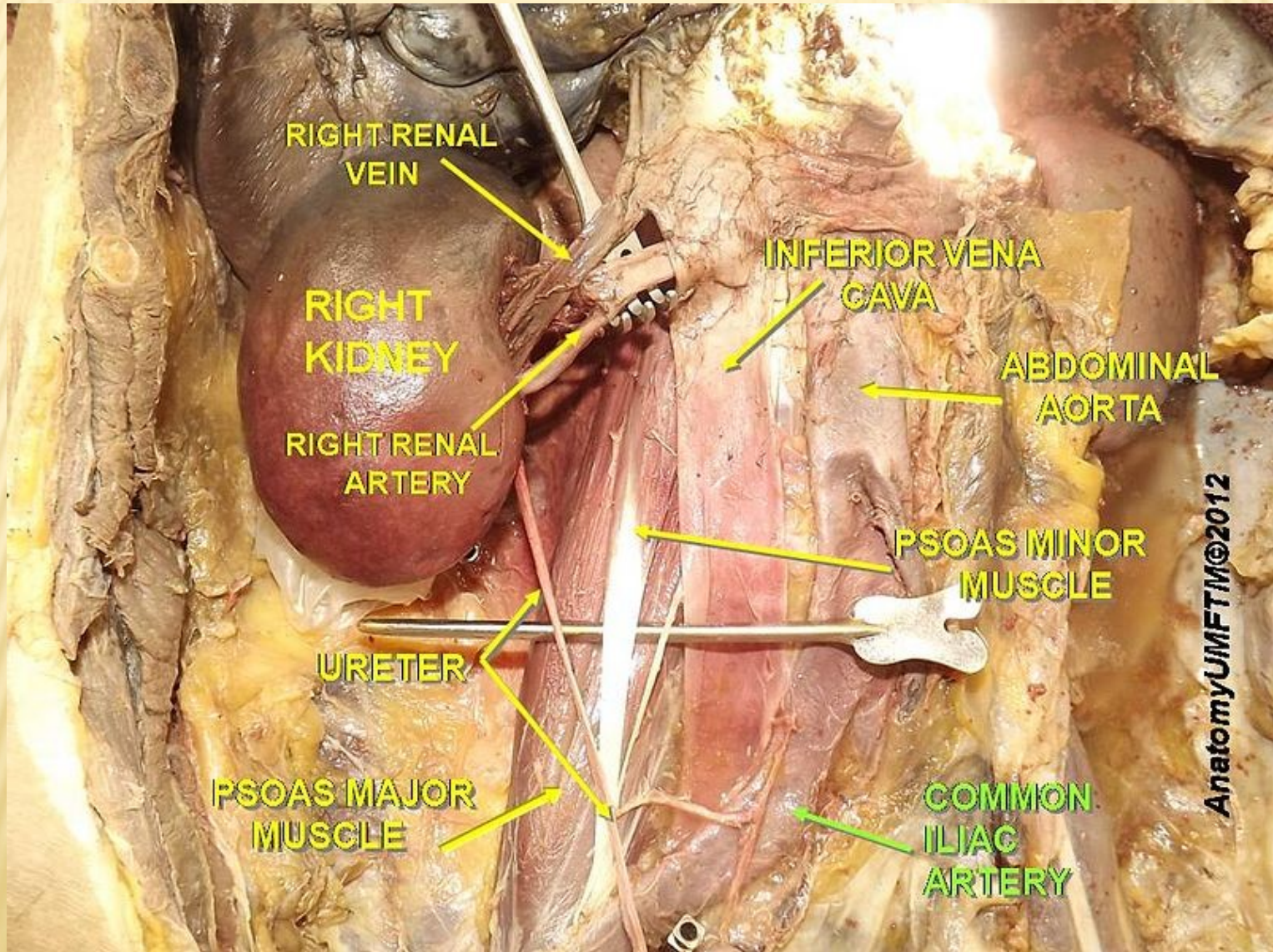
RETE ARTICULARE CUBITI



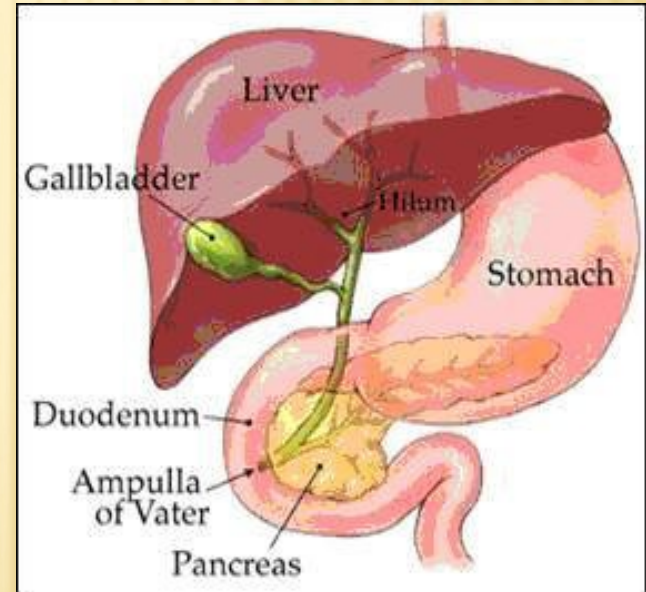
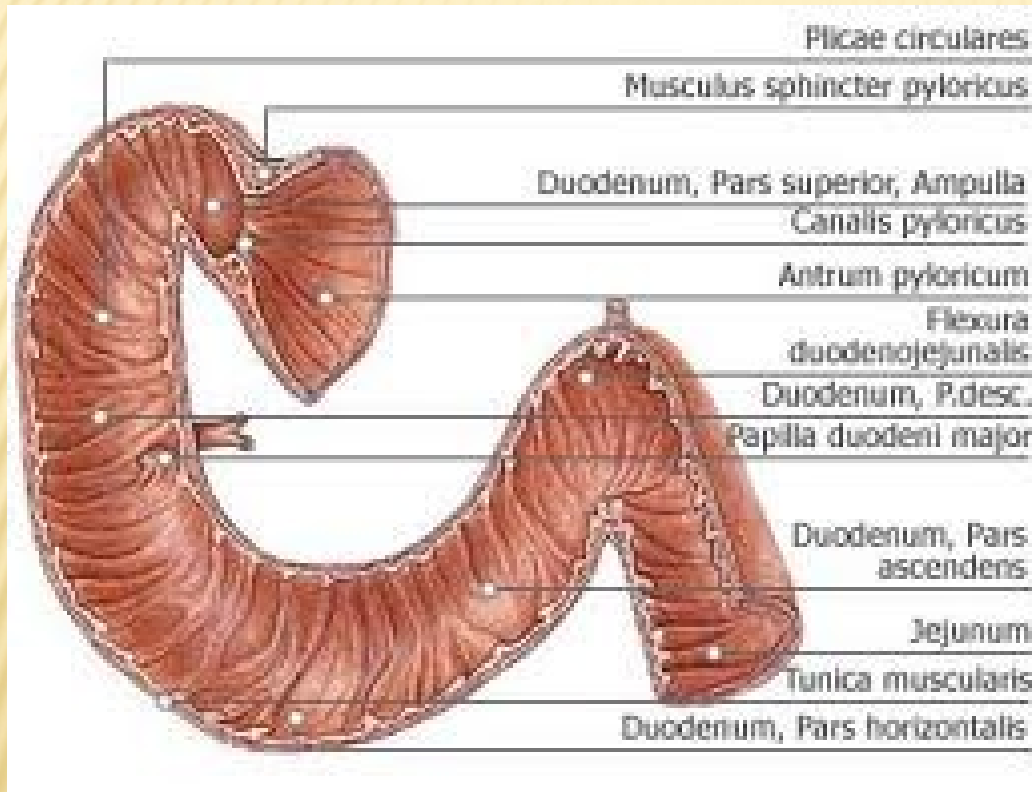
LIGAMENTUM TERES HEPATIS/UTERI



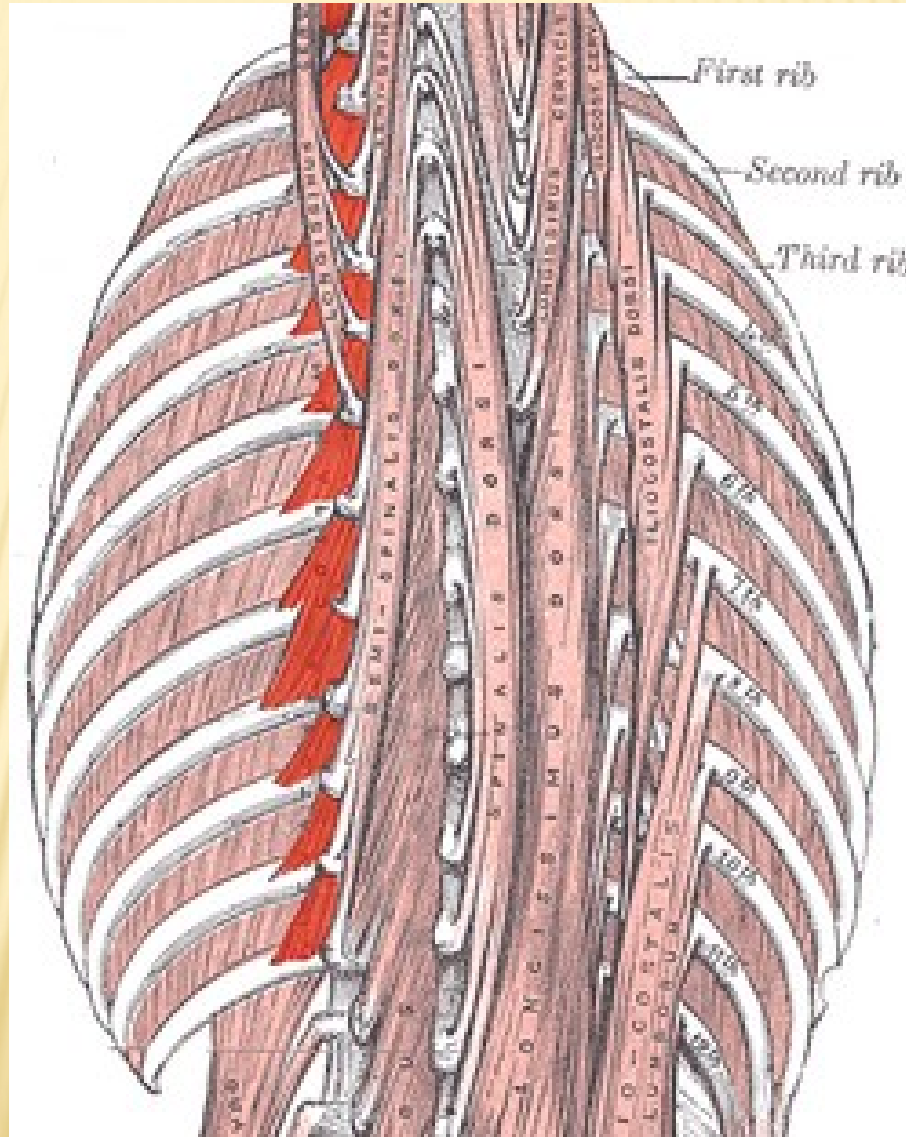
ARTERIA ILIACA COMMUNIS



PARS DESCENDENS DUODENI



MUSCULI LEVATORES COSTARUM



MATCH THE EXPRESSIONS ON THE LEFT WITH THE EXPRESSIONS ON THE RIGHT TO FORM CLINICAL TERMS.

Trauma grave articulationis

Symptomata urocystitidis

Caries profunda dentis

Insufficiencia cordis

Therapia

Fracturae columnae vertebralis

acutae

multiplices

exacerbans

herpetis simplicis

permanentis

genus I. dx.

V. PUT THE TERMS INTO THE CORRECT ORDER TO FORM DIAGNOSES. DO NOT CHANGE THE ENDINGS.

lacerum mentalis
occipitalis vulnus
regionis et

l. dx. musculi
bicipitis ruptura
partialis femoris

nasalium fractura
dislocatione
ossium sine

cruris status
distalis fracturae
post l. sin.
operationem partis

TRANSLATE INTO LATIN.

Suprarenal gland

Simple joints

Lateral margin of the nail

Fossa for the lacrimal gland (*literally of the lacrimal gland*)

Nucleus of the abducent nerve

Vein accompanying the hypoglossal nerve (*literally
Accompanying vein of the hypoglossal nerve*)

Short gastric arteries

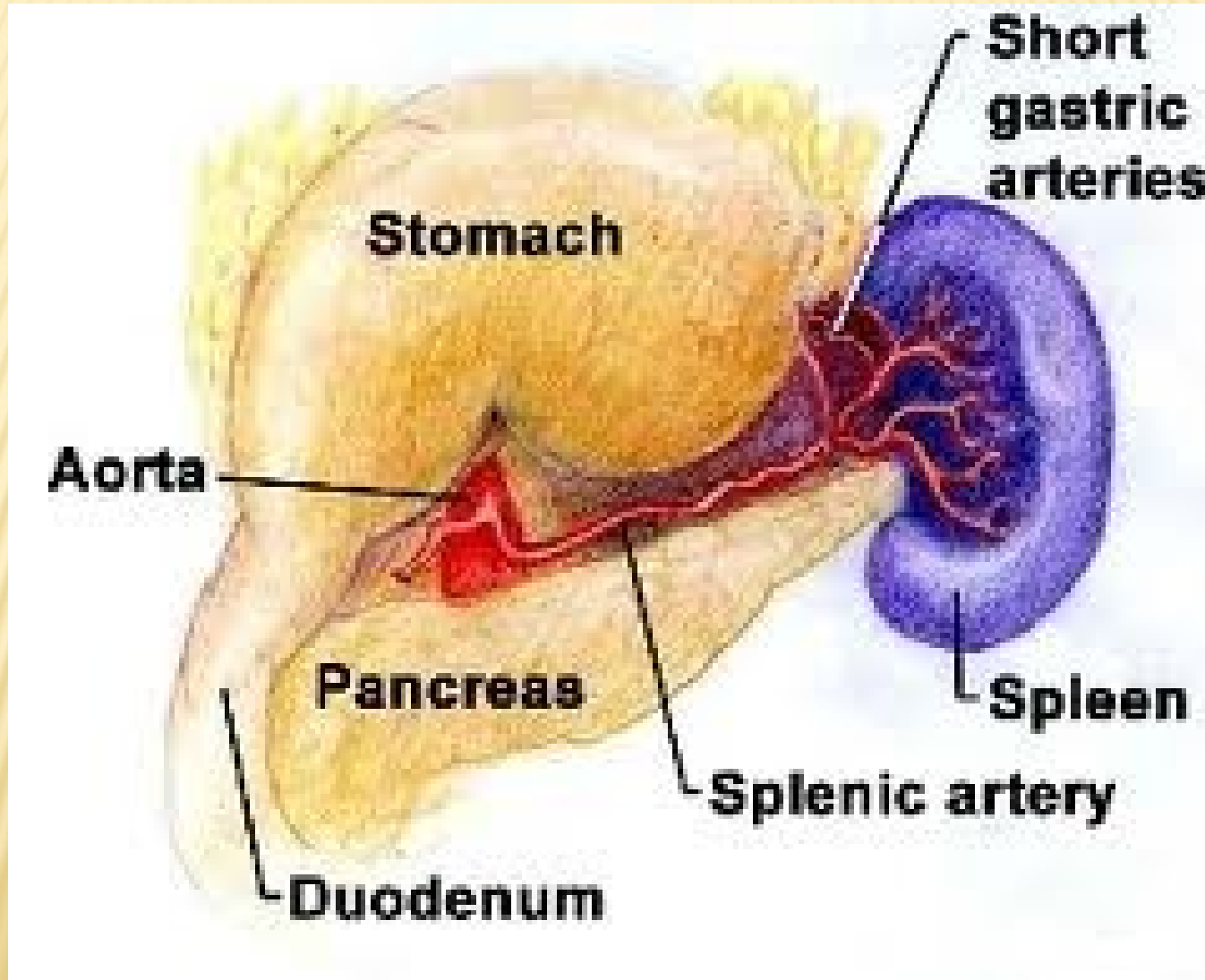
Common carotid artery

Fissure of the round ligament

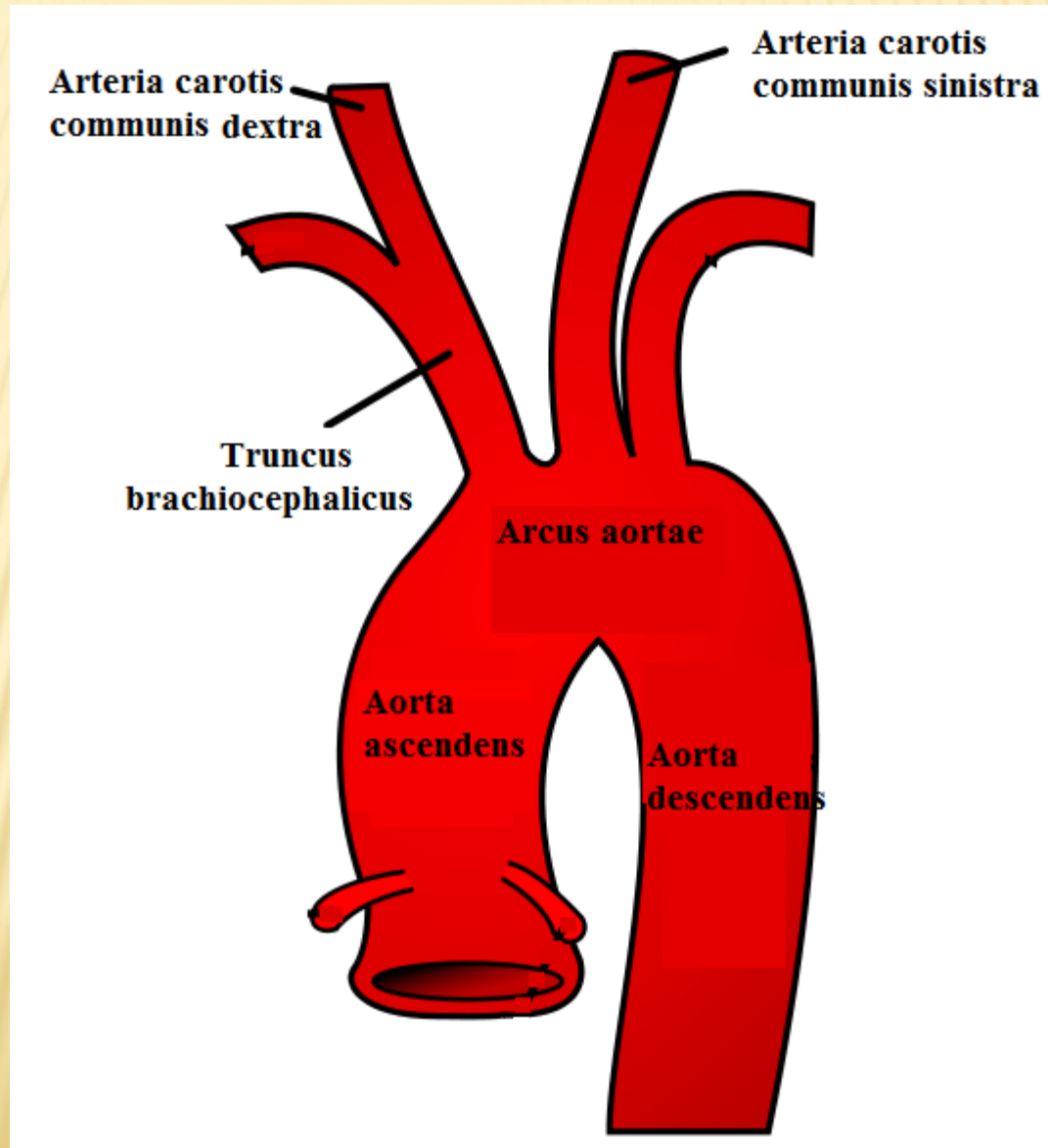
Long/short head of the biceps muscle of the femur

Orifice of the vermiform appendix

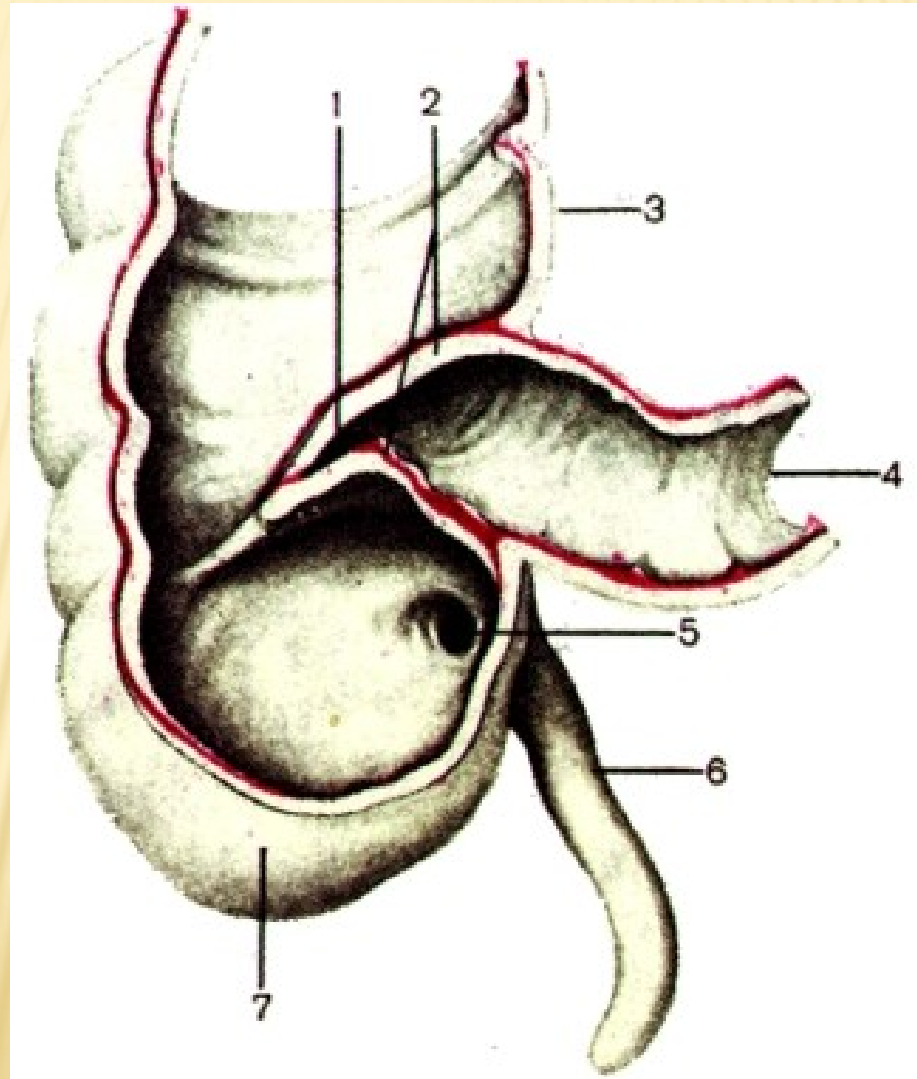
ARTERIAE GASTRICAE BREVES



ARTERIA CAROTIS COMMUNIS



OSTIUM APPENDICIS VERMIFORMIS



EXAMPLES OF AUTHENTIC DIAGNOSES

code	diagnosis
K928	Corpus alienum intestini tenuis perforans
C259	Carcinoma capitis pancreatis inoperabile, metastases hepatis multiplices
S019	Vulnera lacera regionis frontalis, dorsi nasi, labii superioris oris et vestibuli oris
C348	Tumor lobi medii pulmonis I. dx. ad pericardium, diaphragma et nervum phrenicum increscens
C186	St. p. colectomiam subtotalem propter carcinoma coli descendentes
M4795	Vulnus punctum cubiti sin., corpus alienum vitreum loci vulneris
S5250	Fractura intraarticularis partis distalis radii sin. dislocata comminutiva
S9220	Fractura ossis cuboidei et navicularis pedis I. dx. sine dislocatione
S863	Ruptura musculi tricipitis surae I. dx. suspecta
K928	Corpora aliena vitrea multiplicia antebrachii I. dx.
S300	Contusio dorsi regionis lumbalis gravis

I. LOOK UP ALL ADJECTIVES IN THE DIAGNOSES AND WRITE THEM DOWN IN THEIR DICTIONARY FORMS IN THE TABLE.

3-form adjectives	2-form adjectives	1-form adjectives

II. TRANSLATE THE DIAGNOSES INTO ENGLISH.

III. FILL IN THE WORDS FROM THE TABLE IN THE DIAGNOSES IN THE CORRECT FORM (SEE THE HAND-OUT).

IV. PUT THE UNDERLINED TERMS IN THE OPPOSITE NUMBER.

code	diagnosis
K928	<u>Corpus alienum</u> intestini tenuis <u>perforans</u>
C259	Carcinoma capitis pancreatis inoperabile, metastases hepatis multiplices
S019	<u>Vulnera lacera</u> regionis frontalis, dorsi nasi, labii superioris oris et vestibuli oris
C348	<u>Tumor</u> lobi medii pulmonis l. dx. ad pericardium, diaphragma et nervum phrenicum <u>increscens</u>
C186	St. p. colectomiam subtotalem propter carcinoma coli descendents
M4795	<u>Vulnus punctum cubiti</u> sin., <u>corpus alienum vitreum loci vulneris</u>
S5250	<u>Fractura intraarticularis partis distalis radii</u> sin. <u>dislocata comminutiva</u>
S9220	<u>Fractura ossis cuboidei et navicularis pedis</u> l. dx. sine dislocatione
S863	<u>Ruptura musculi tricipitis surae</u> l. dx. <u>suspecta</u>
K928	<u>Corpora aliena vitrea multiplicia</u> antebrachii l. dx.
S300	<u>Contusio</u> dorsi regionis lumbalis <u>gravis</u>