

Adjectives of the 3rd declension

Connect adjective with different nouns

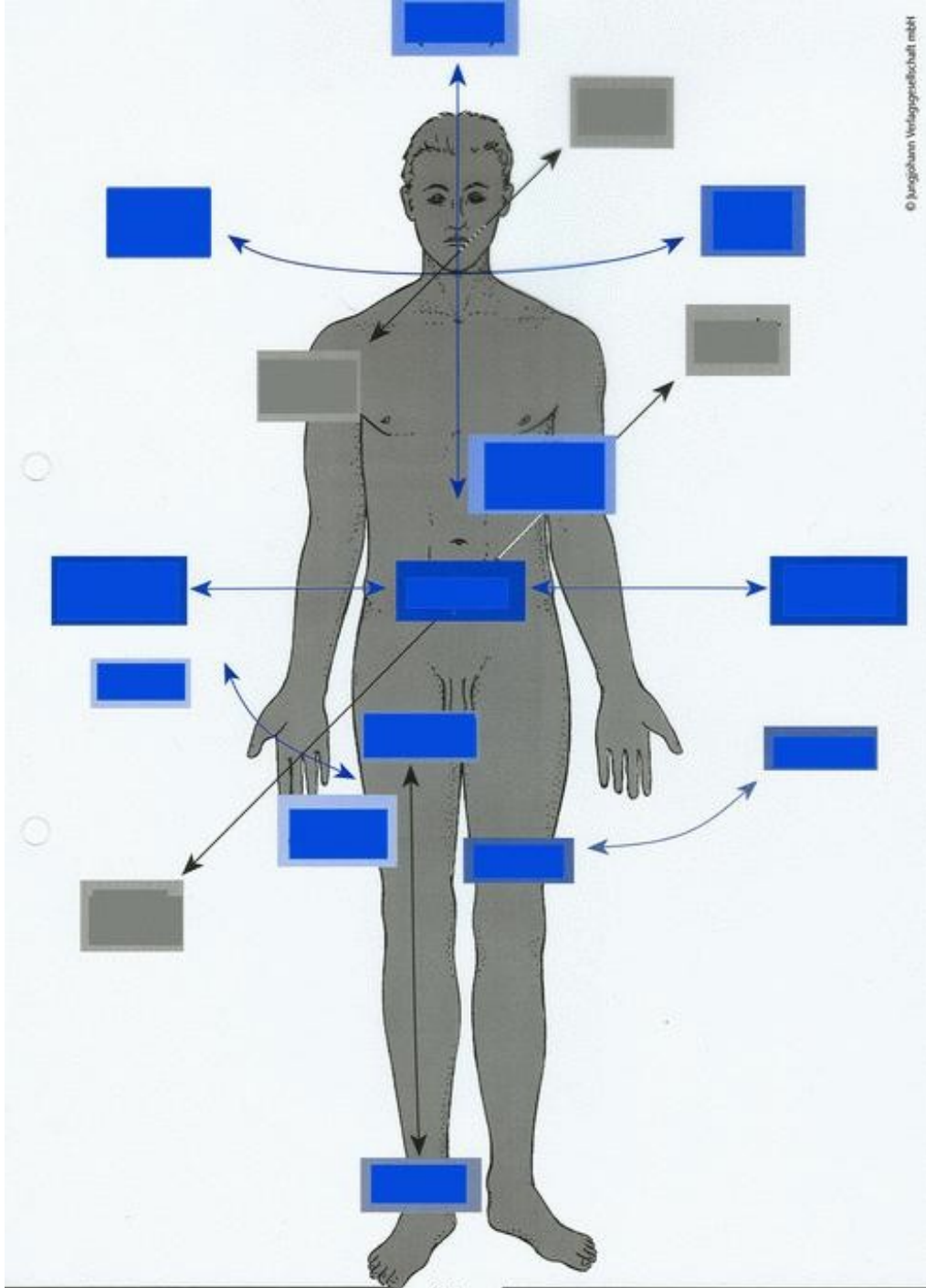
- pars, ostium, regiones, ramus, aorta
 - regio, nervi, arteria, corpus, rami
 - crista, glandulae, musculi
 - segmenta, canalis, venae, foramina, nuclei
- + abdominalis, e**
- + perinealis, e**
- + urethralis, e**
- + sacralis, e**

Connect noun with different type of adjectives

ischiadicus, a, um	tuber	parietalis, e
longus, a, um	caput	brevis, e
lentus, a, um	sepsis	puerperalis, e
induratus, a, um	hepar	mobilis, e
crassus, a, um	intestinum	tenuis, e
cysticus, a, um	ren	migrans, antis
complicatus, a, um	fractura	simplex, cis
acutus, a, um	urocystitis	catarrhalis, e
magnus, a, um	musculus	biceps, pitis
transversus, a, um	colon	ascendens, entis
medius, a, um	pars	cranialis, e

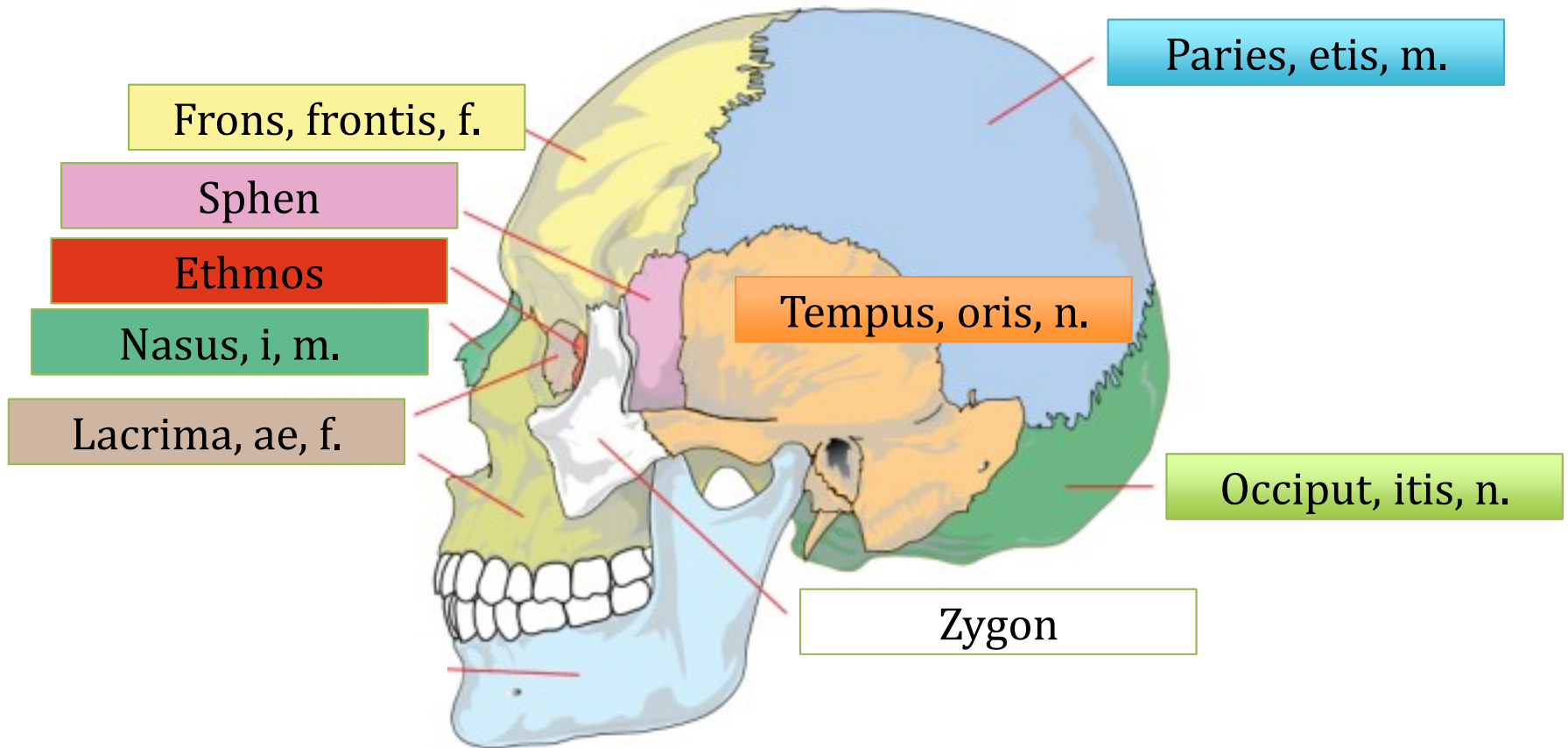
Join the same noun with two different adjectives

centralis, e	<i>canalis</i>	opticus, a, um
ischiadicus, a, um	<i>tuber</i>	frontalis, e
tenuis, e	<i>intestinum</i>	crassus, a, um
rectus, a, um	<i>musculus</i>	biceps, pitis
ascendens, tis	<i>colon</i>	transversus, a, um
thyroideus, a, um	<i>glandula</i>	suprarenalis, e
biliaris, e	<i>vesica</i>	felleus, a, um
longus, a, um	<i>caput</i>	brevis, e
solaris, e	<i>eczema</i>	ruber, a, um



© Jungbühner Verlagsgesellschaft mbH

Name bones of skull, use nouns as hints



Fill in the missing term

1. The space in the body below the chest is *cavitas* _____.
2. Channel formed of the holes in the centre of each vertebra, through which the spinal cord passes is *canalis* _____.
3. The eighth cranial nerve which governs hearing and balance is *nervus* _____.
4. Patient that is unable to move/walk is *patiens* _____.
5. Disease which develops all the time is *morbus* _____.
6. One of the two muscles which lie across the chest is *musculus* _____.
7. One of the two endocrine glands at the top of the kidneys is *glandula* _____.

Pectoralis, e

Vertebralis, e

Abdominalis, e

Suprarenalis, e

Progrediens, entis

Immobilis, e

Vestibulocochlearis, e

Fill in the logical opposite

- Dentes lactei <> _____
- Arcus dentalis maxillaris <> _____
- Facies digitalis dorsalis <> _____
- Ligamentum palpebrale laterale <> _____
- Fractura malleoli medialis <> _____
- Caries profunda <> _____
- Os longum <> _____
- Ulcus durum <> _____
- Fractura simplex <> _____
- Pars lateralis <> _____

Form anatomical terms

- Caries + dens (pl.) + permanens, entis
- Rete + articularis, e + cubitus
- In + canalis + centralis, e + medulla + spinalis, e
- Tuber + frontalis, e + os + frontalis, e
- Operatio + pars + descendens, entis + et + ascendens, entis + duodenum
- Capsula + articularis, e + humerus
- Processus (pl.) + vertebra (pl.) + columna + vertebralis, e
- Ruptura + musculus + biceps, pitis + brachium
- Septem (7) + ligamentum (pl.) + teres (pl.) + corpus + humanus, a, um
- Tunica + mucosus, a, um + intestinum + tenuis, e
- Vena + comitans, antis + nervus + hypoglossus, a, um

Find mistake

- Musculi levatores costarum brevium breves
- Glandulae suprarenale suprarenales
- Vena iliaca communa communis
- Organum vestibulocochlearis vestibulocochleare
- Trauma gravis articulationis genus sinistri grave
- Therapia urocystitidis gravidis gravis
- Ramus communicant cum nervi ulnari
communicans nervo