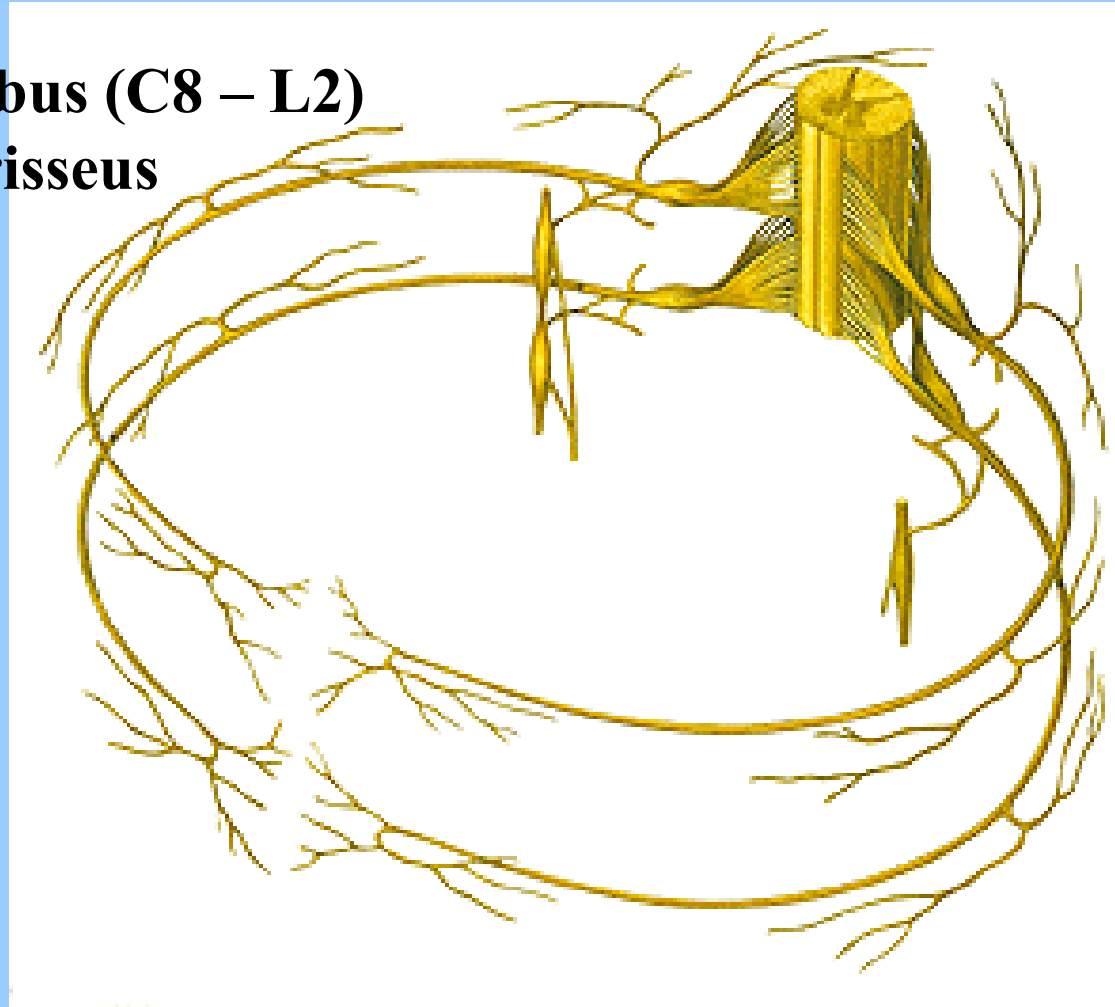


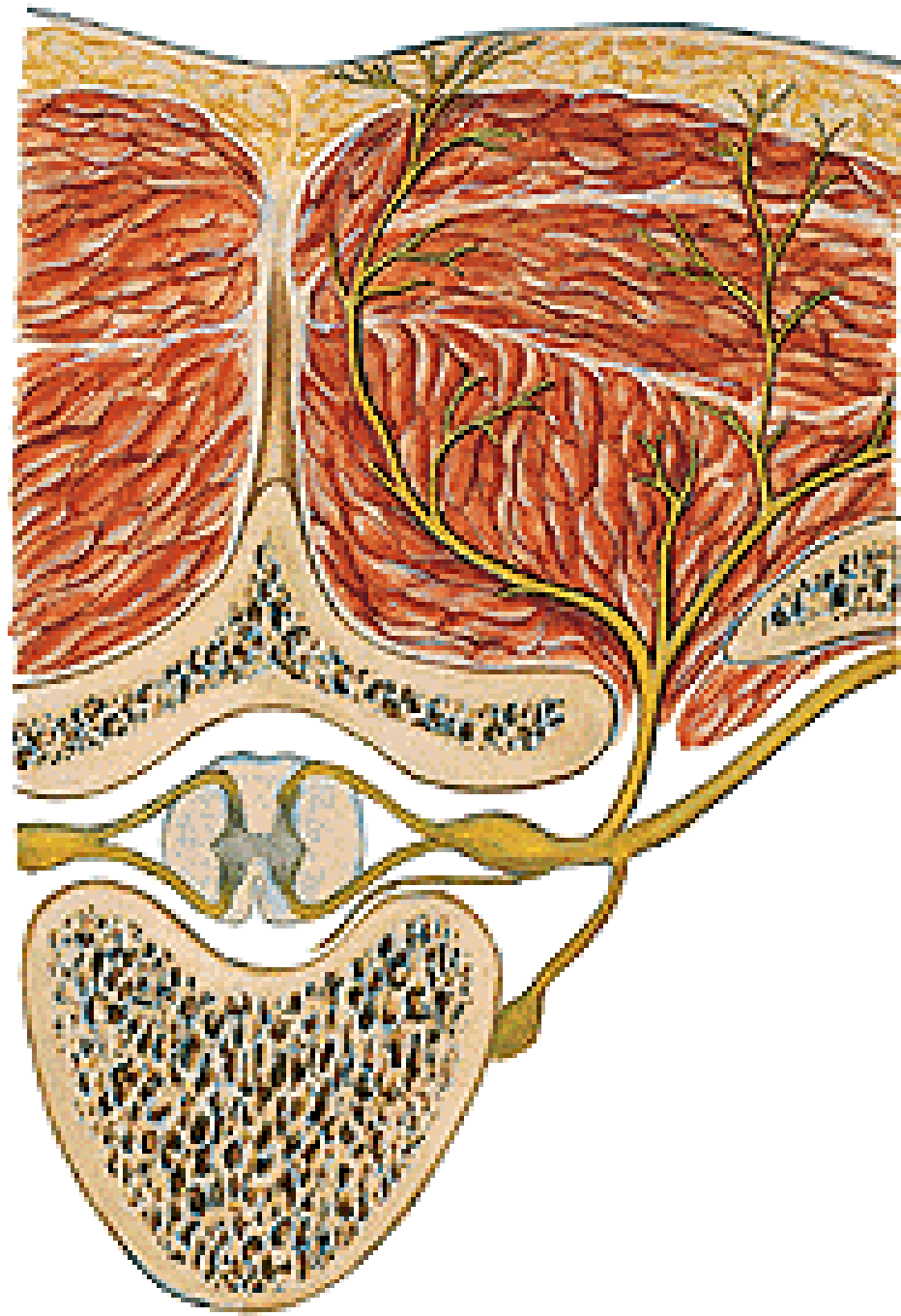
# **NERVUS SPINALIS**

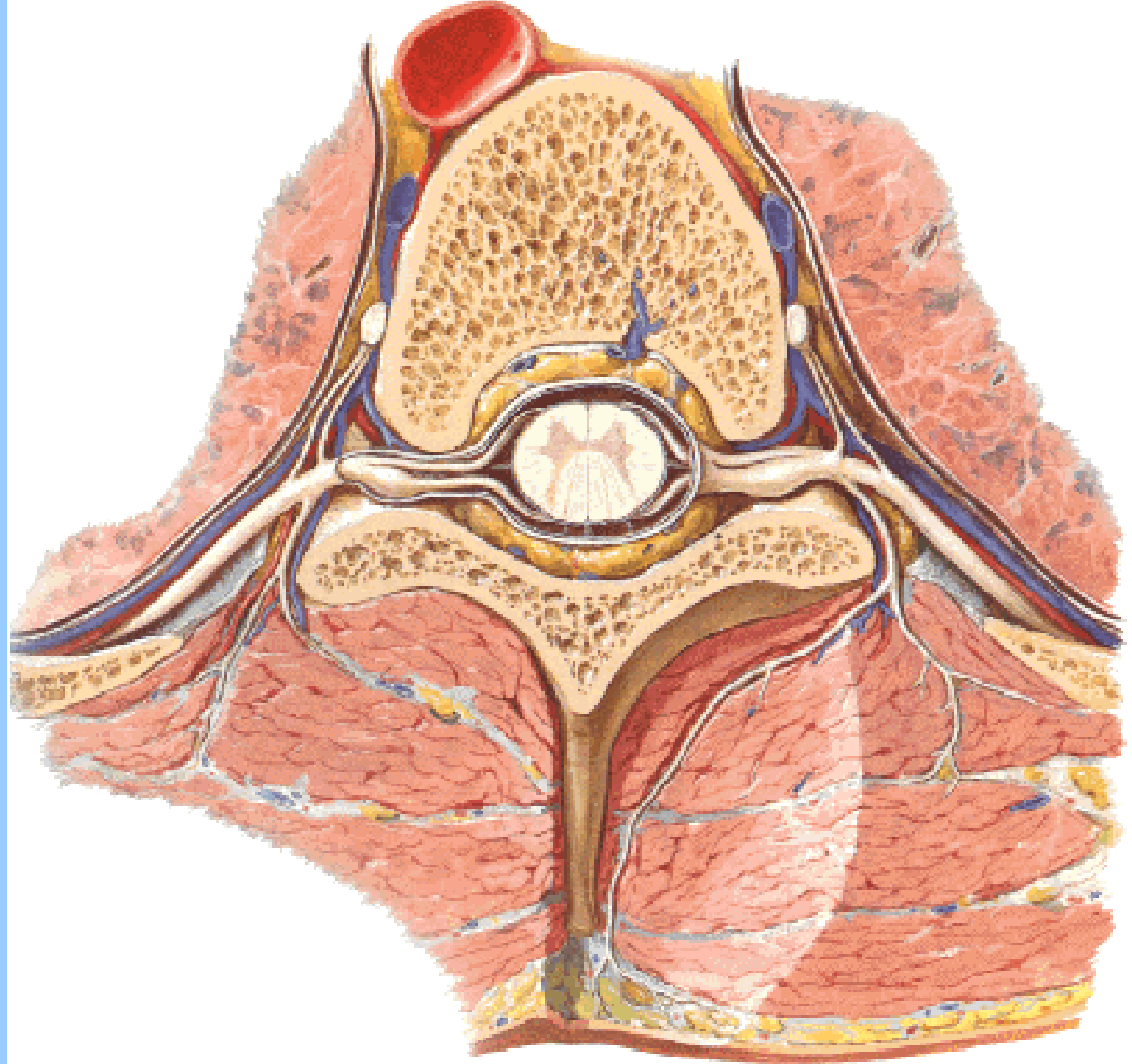
## **NERVUS SPINALIS:**

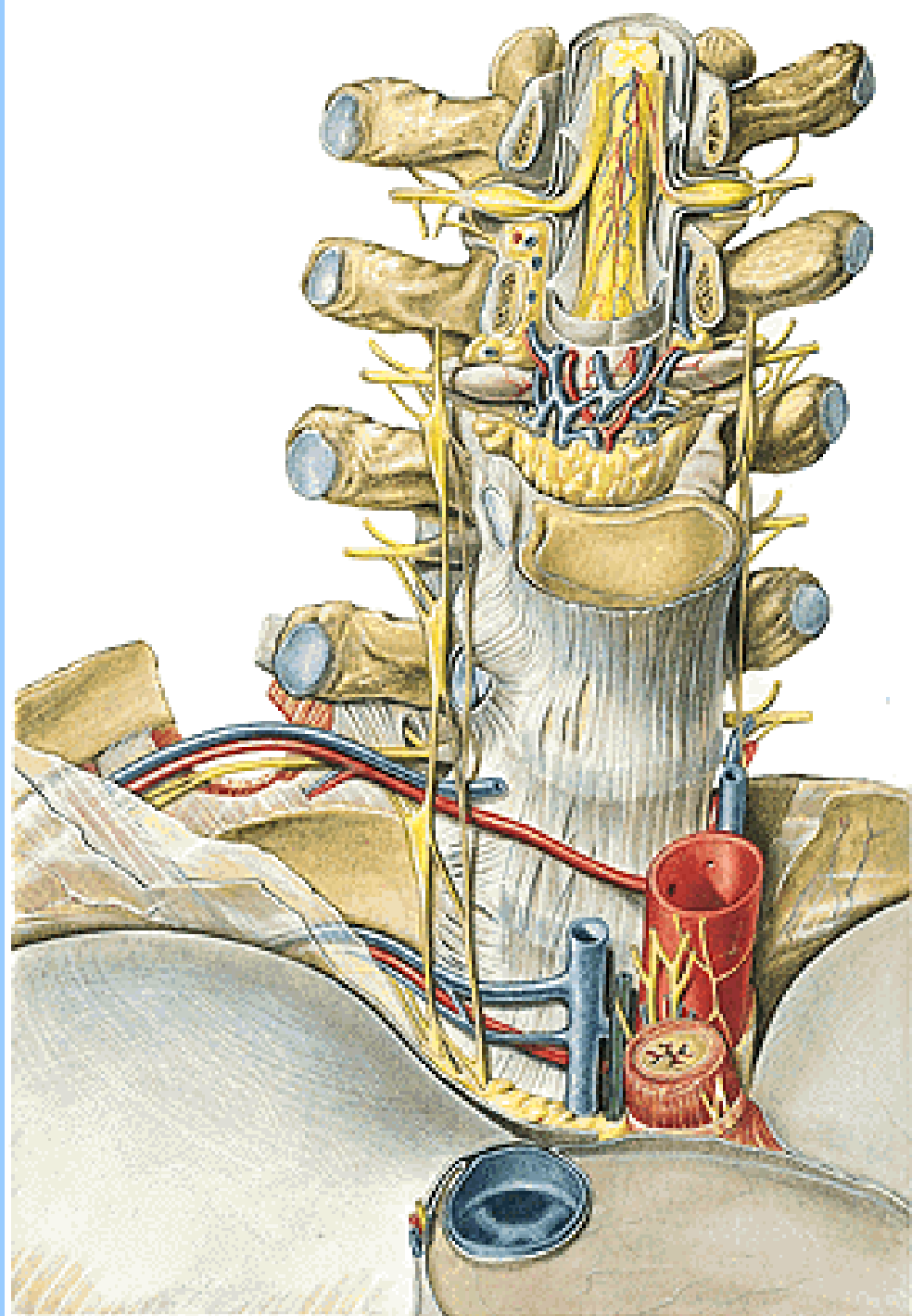
- **ramus meningeus**
- **ramus communicans albus (C8 – L2)**
- **ramus communicans griseus**
- **ramus dorsalis**
- **ramus ventralis**



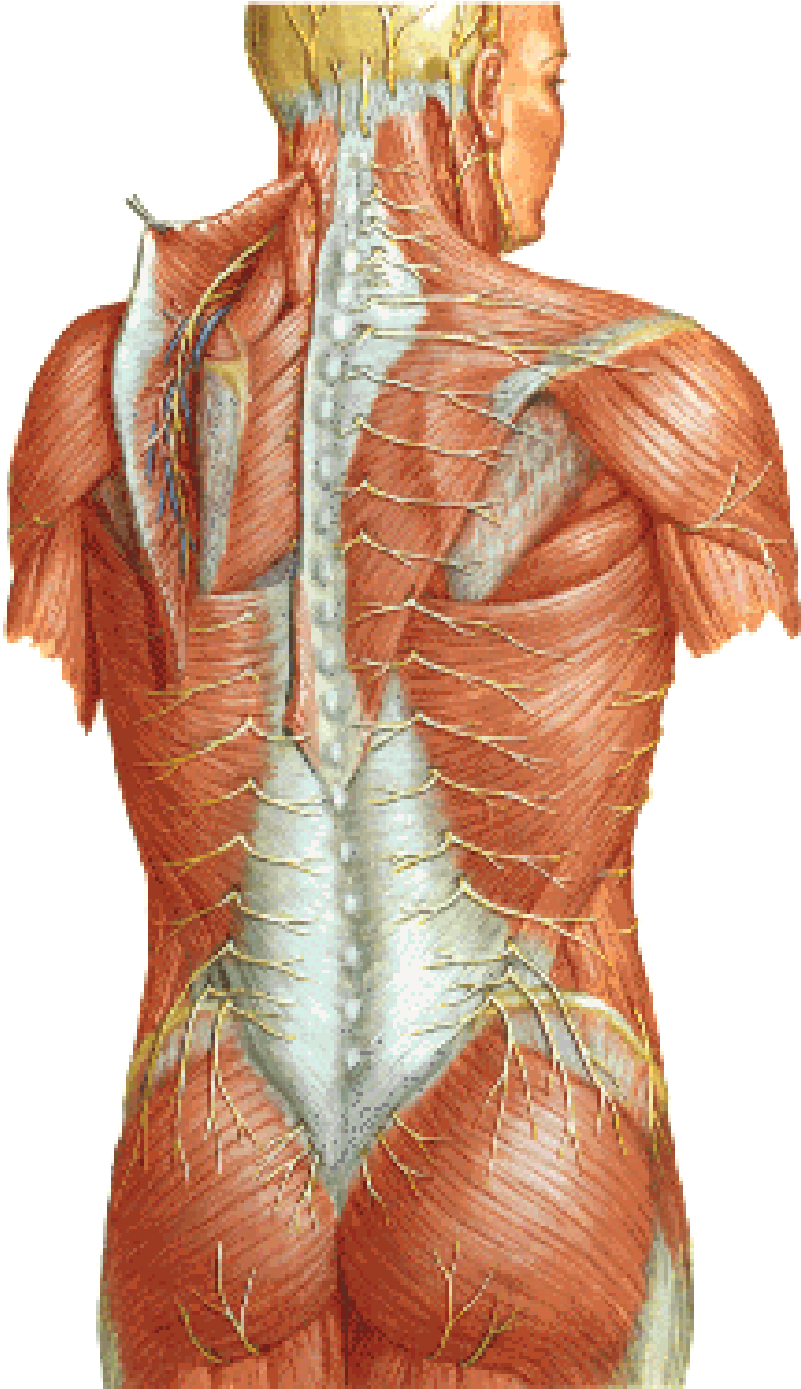
**Truncus sympathicus**



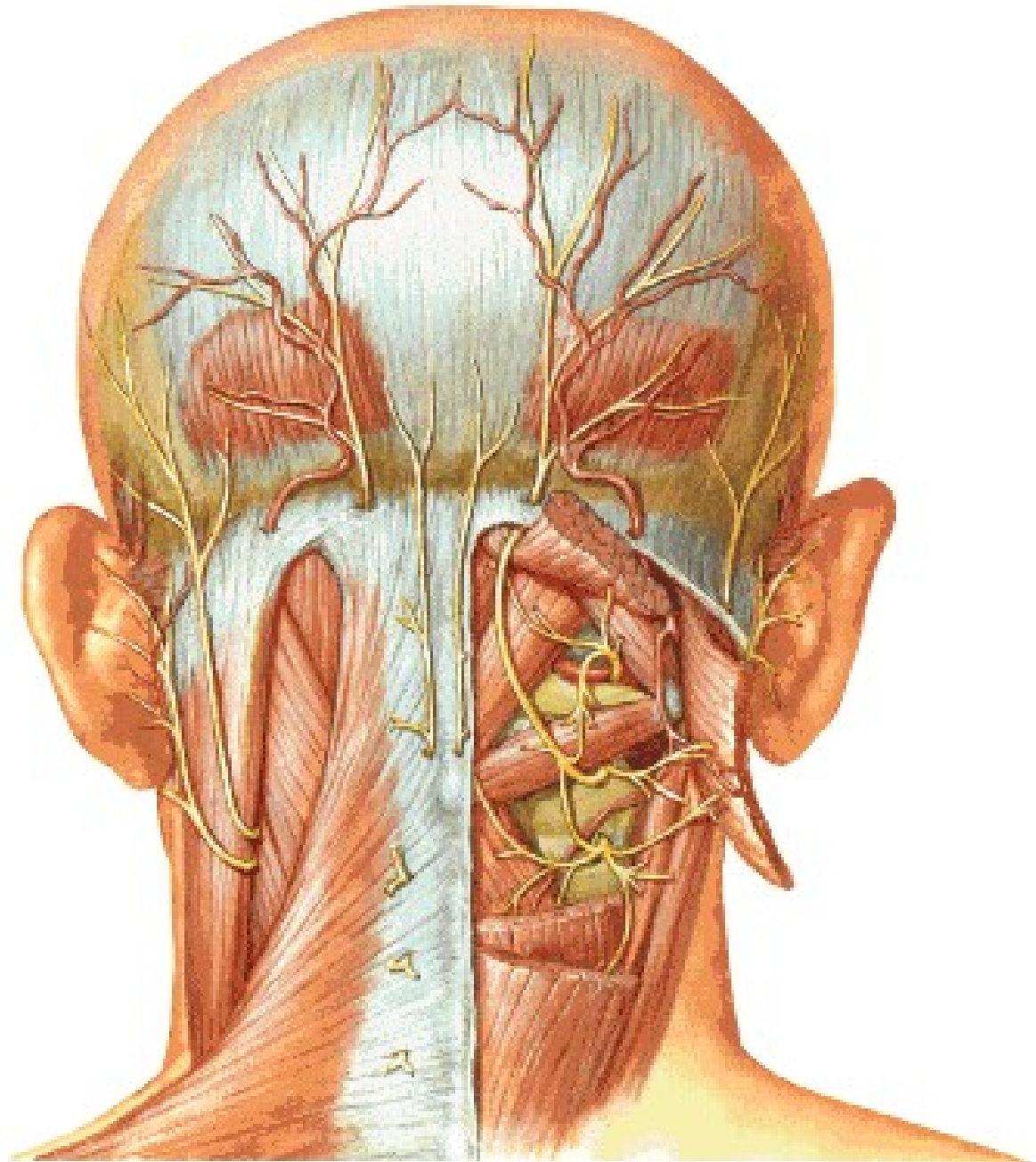




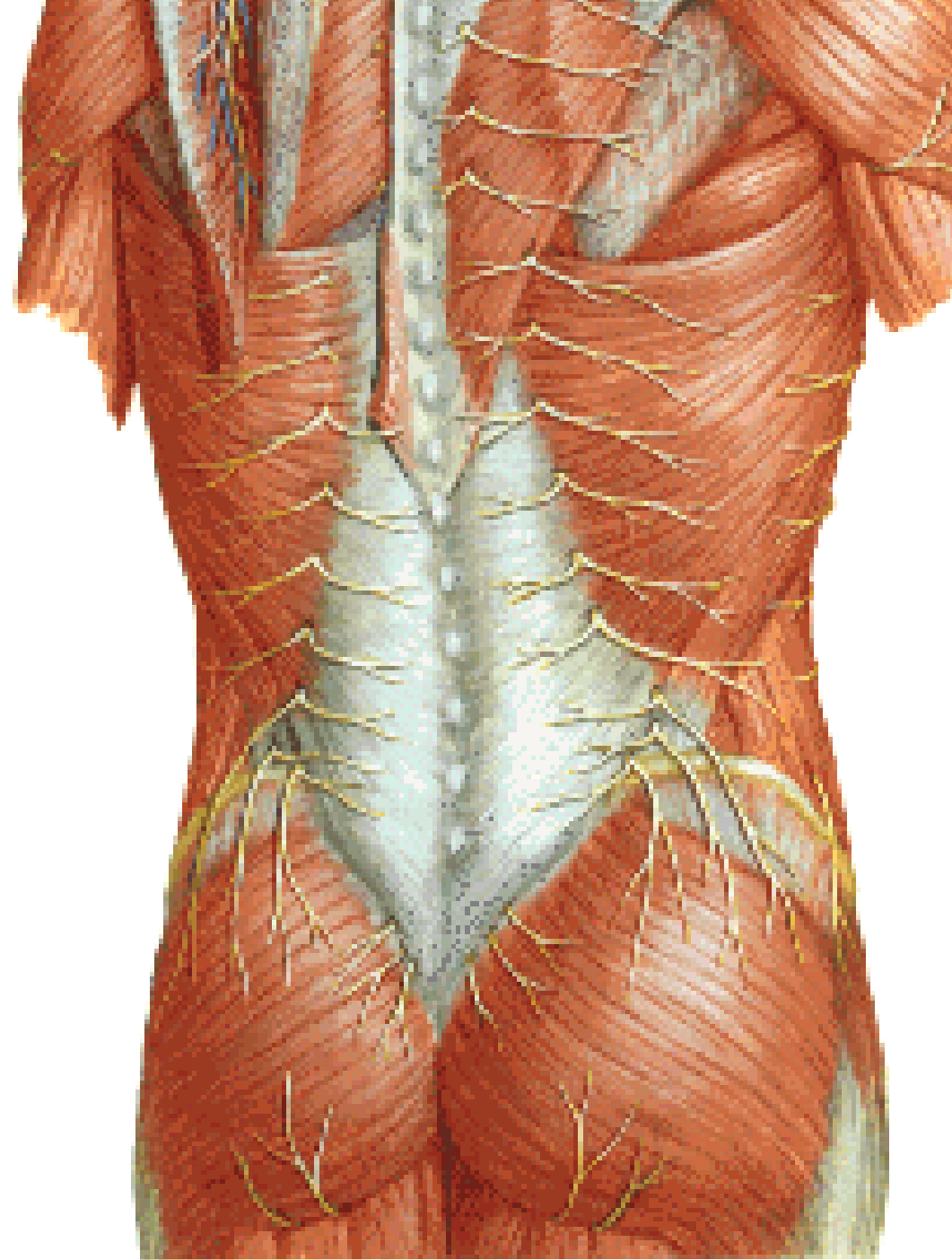
**Rami dorsales**



**N. suboccipitalis**  
**N. occipitalis major**  
**N. occipitalis tertius**



**Nn. clunium superiores**  
**Nn. clunium medii**

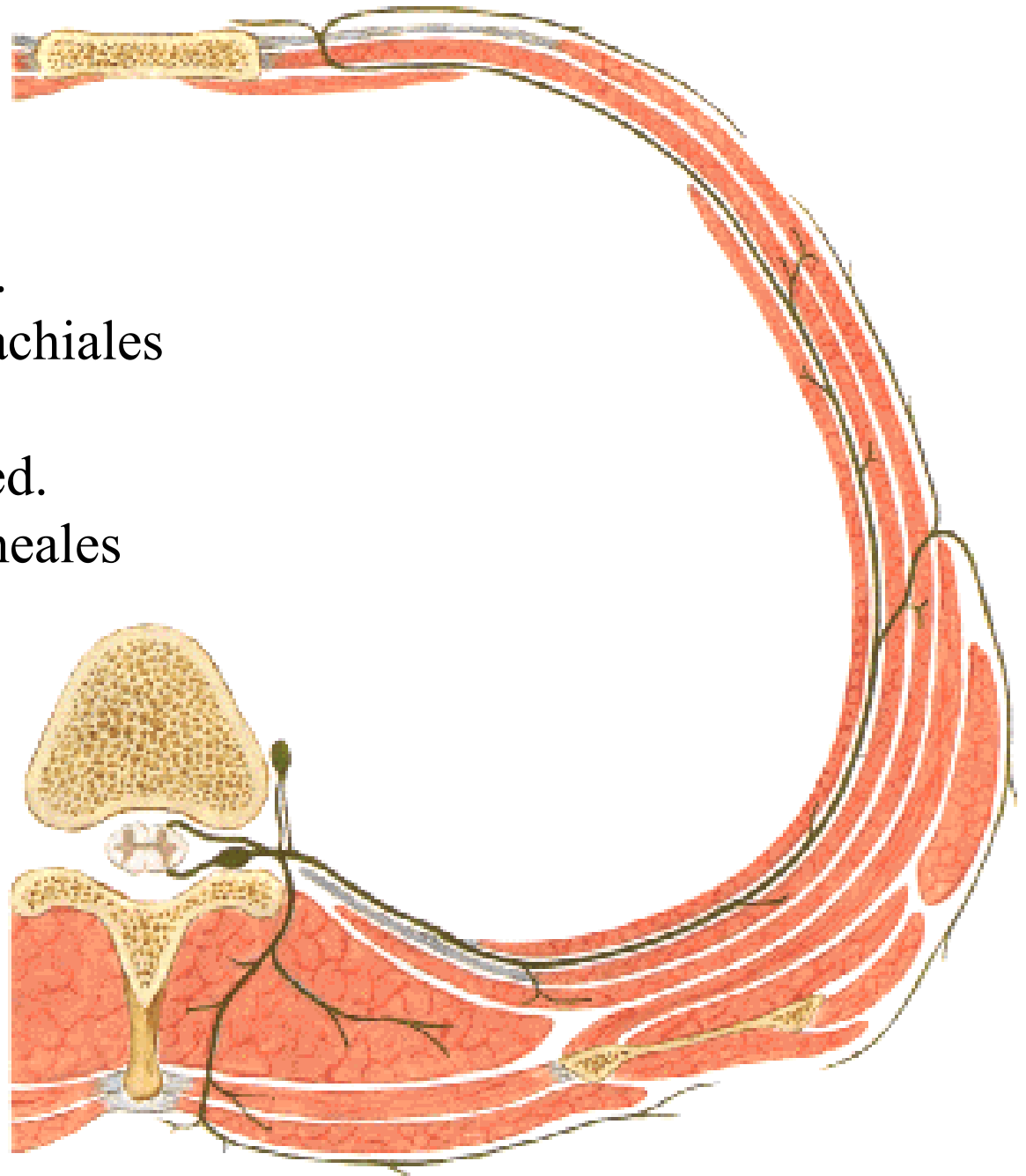




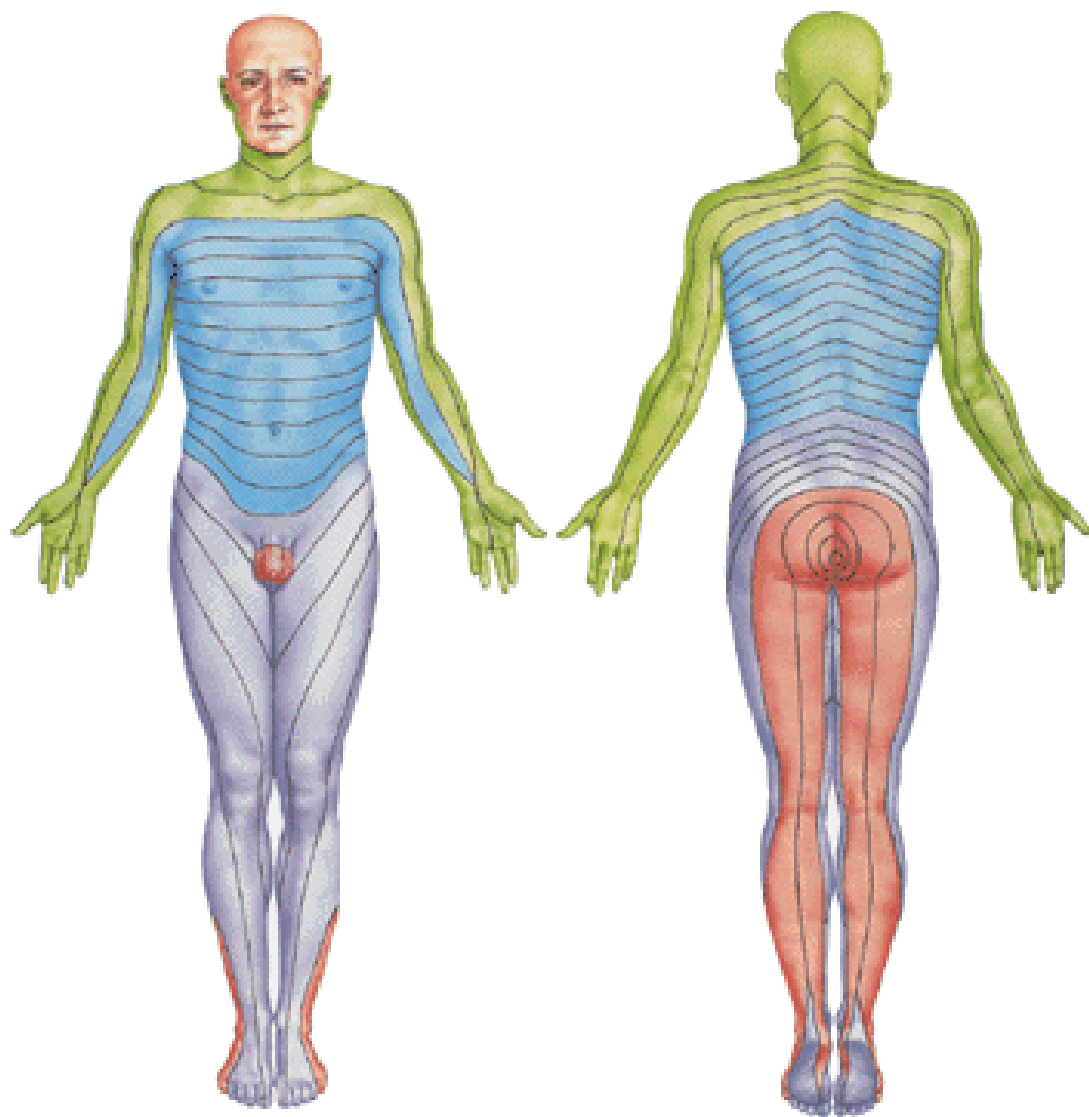
## **N. intercostalis**

- rr. musculares
- rr. cutanei laterales
  - rr. mammarii lat.
  - nn. intercostobrachiales
- rr. cutanei anteriores
  - rr. mammarii med.
- rr. pleurales et peritoneales

## **N. subcostalis**



# Dermatomes



# **PLEXUS CERVICALIS**

# PLEXUS CERVICALIS (C1 – C4)

## Ansa cervicalis prof.

- radix superior
- radix inferior

## N. transversus colli

## Ansa cervicalis spf.

(r. colli CN VII)

## N. auricularis magnus

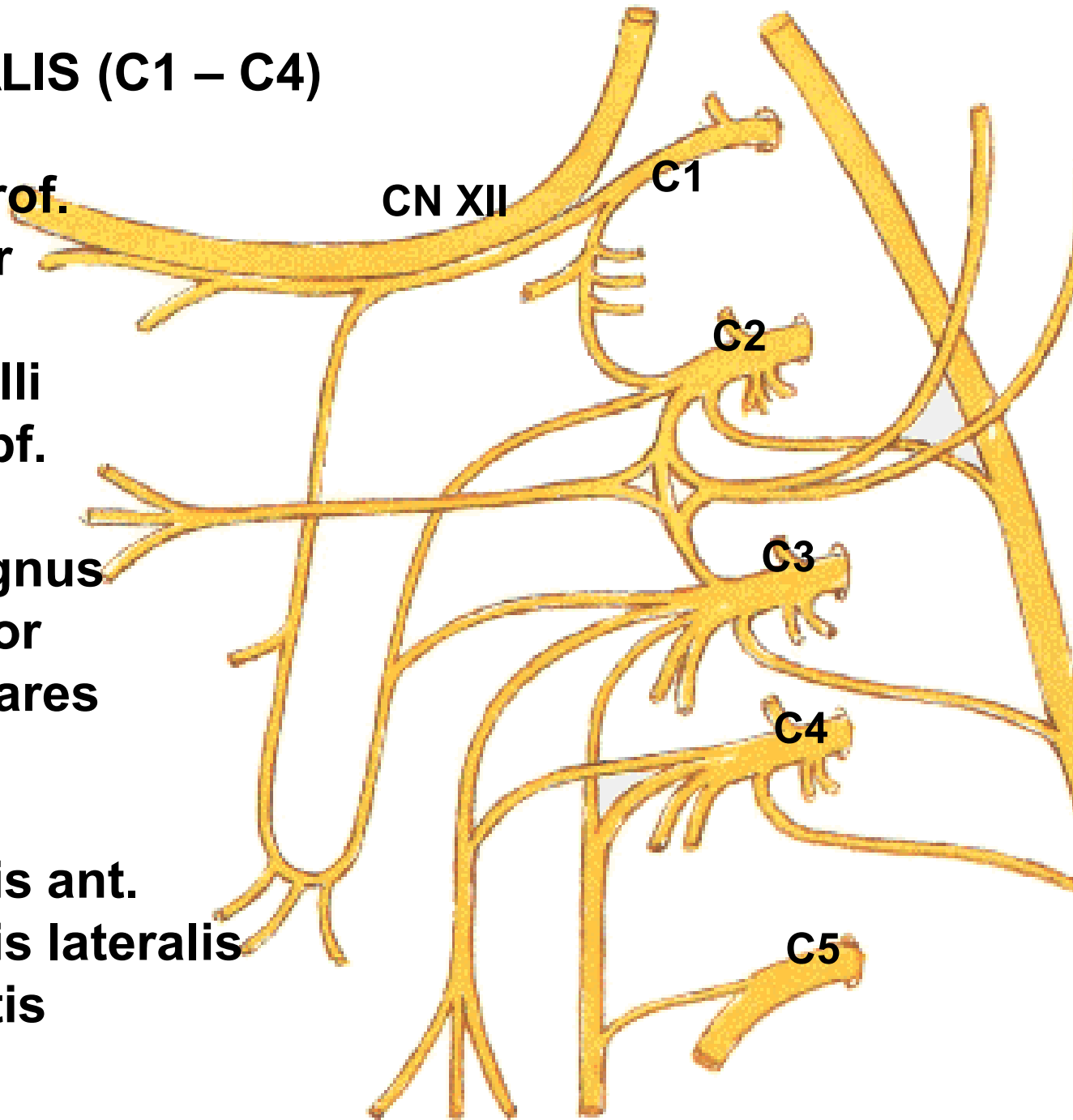
## N. occipitalis minor

## Nn. supraclaviculares

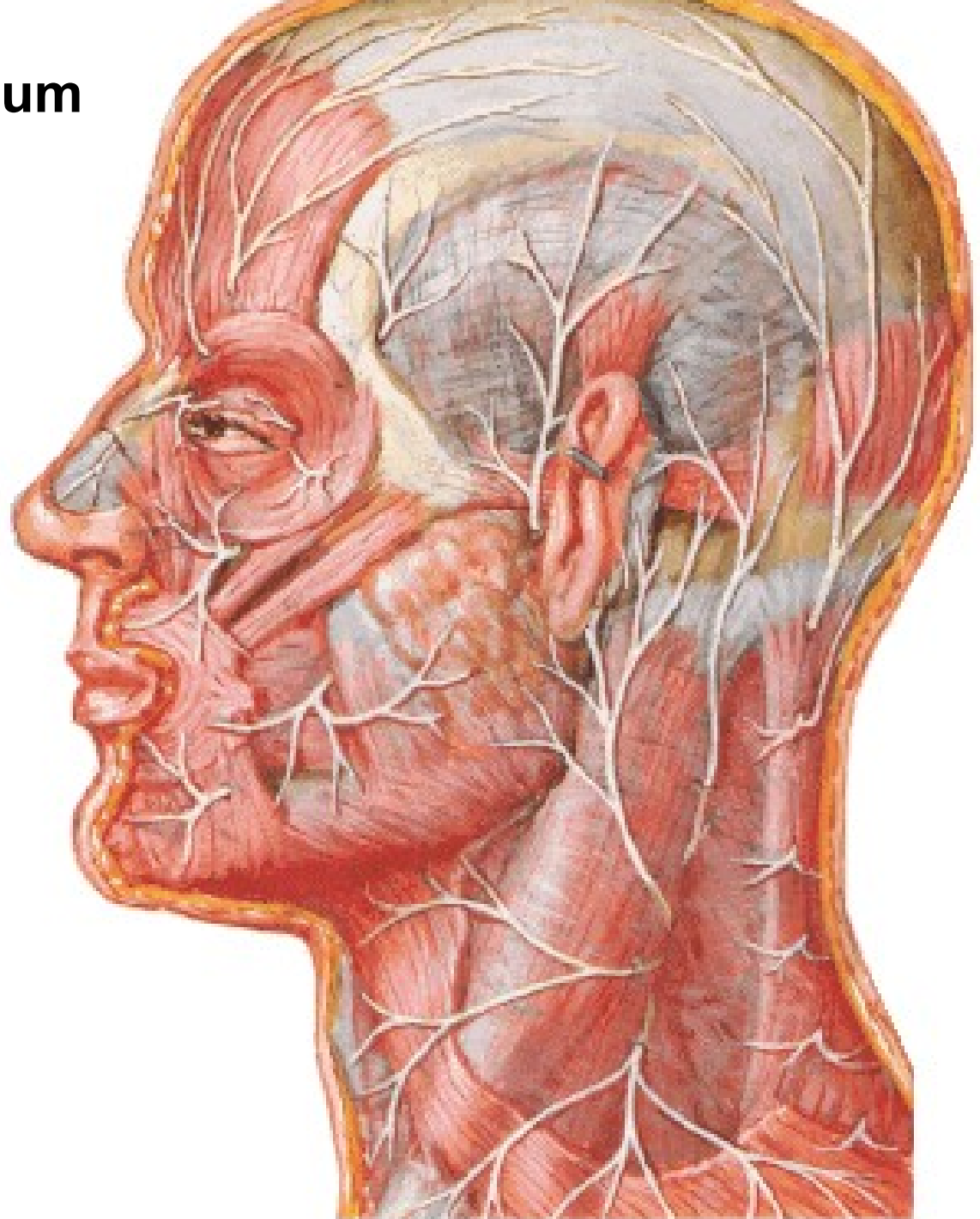
## N. phrenicus

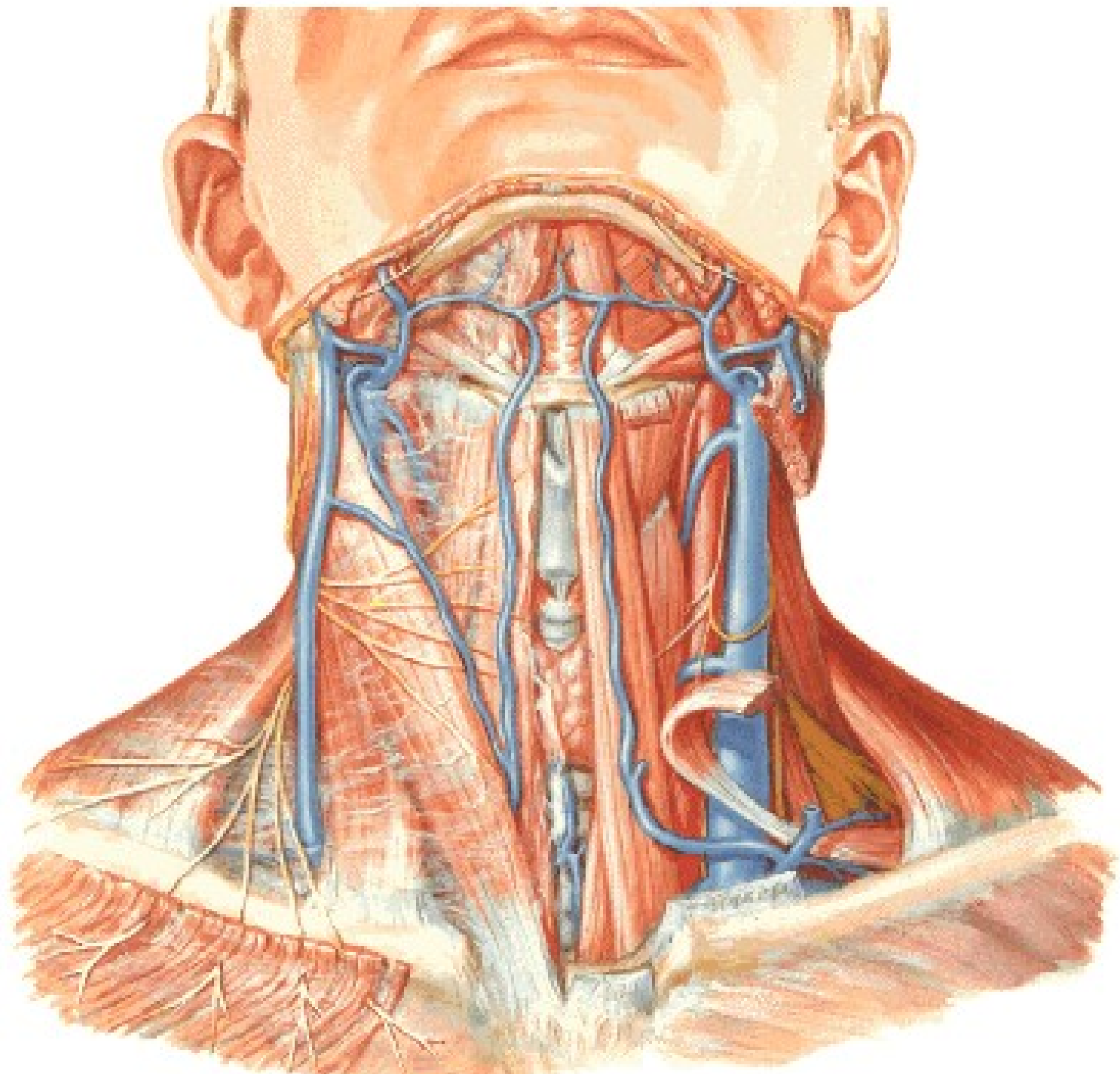
## Rr. musculares

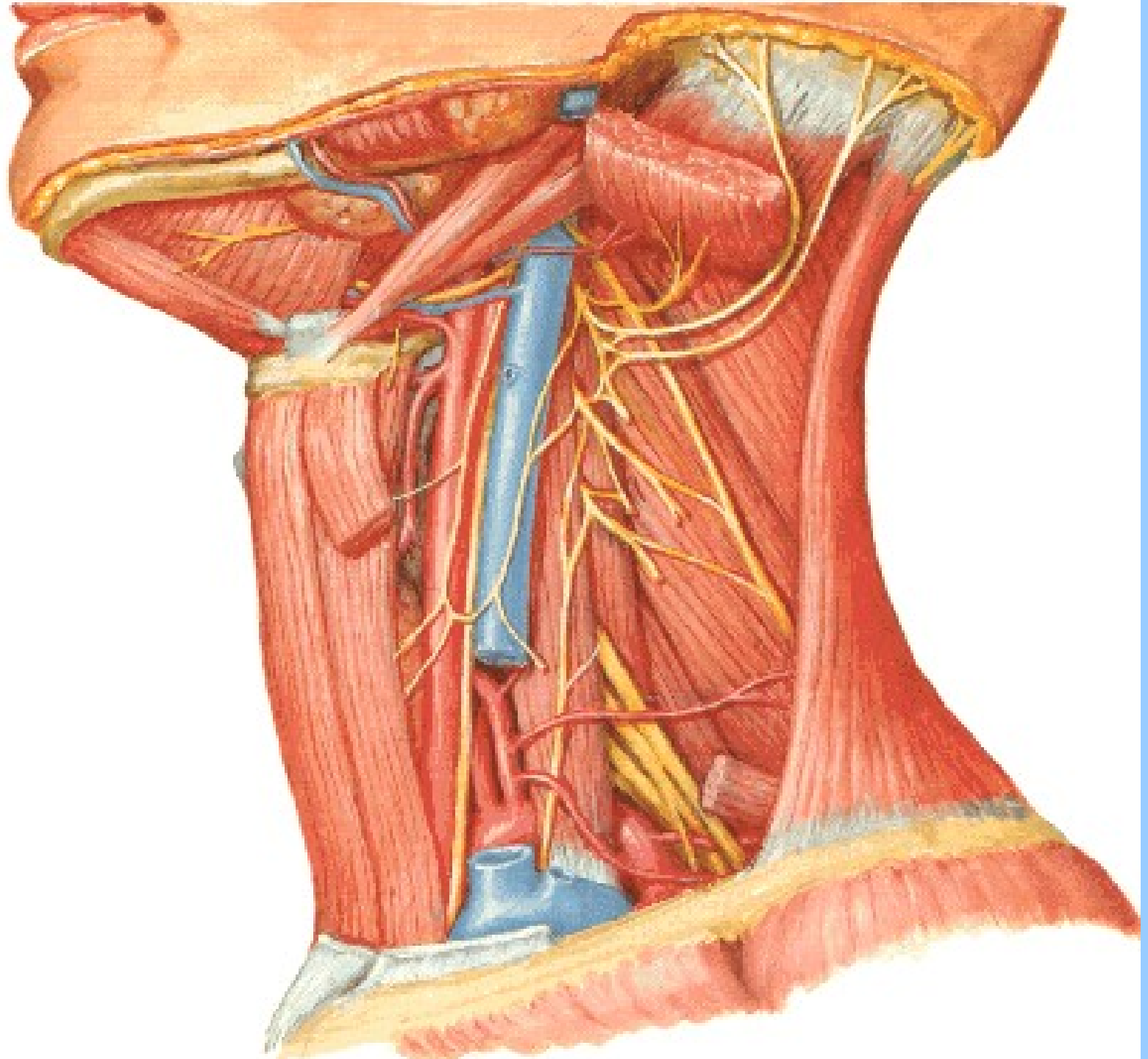
- m. rectus capitis ant.
- m. rectus capitis lateralis
- m. longus capitis
- m. longus colli
- mm. scaleni



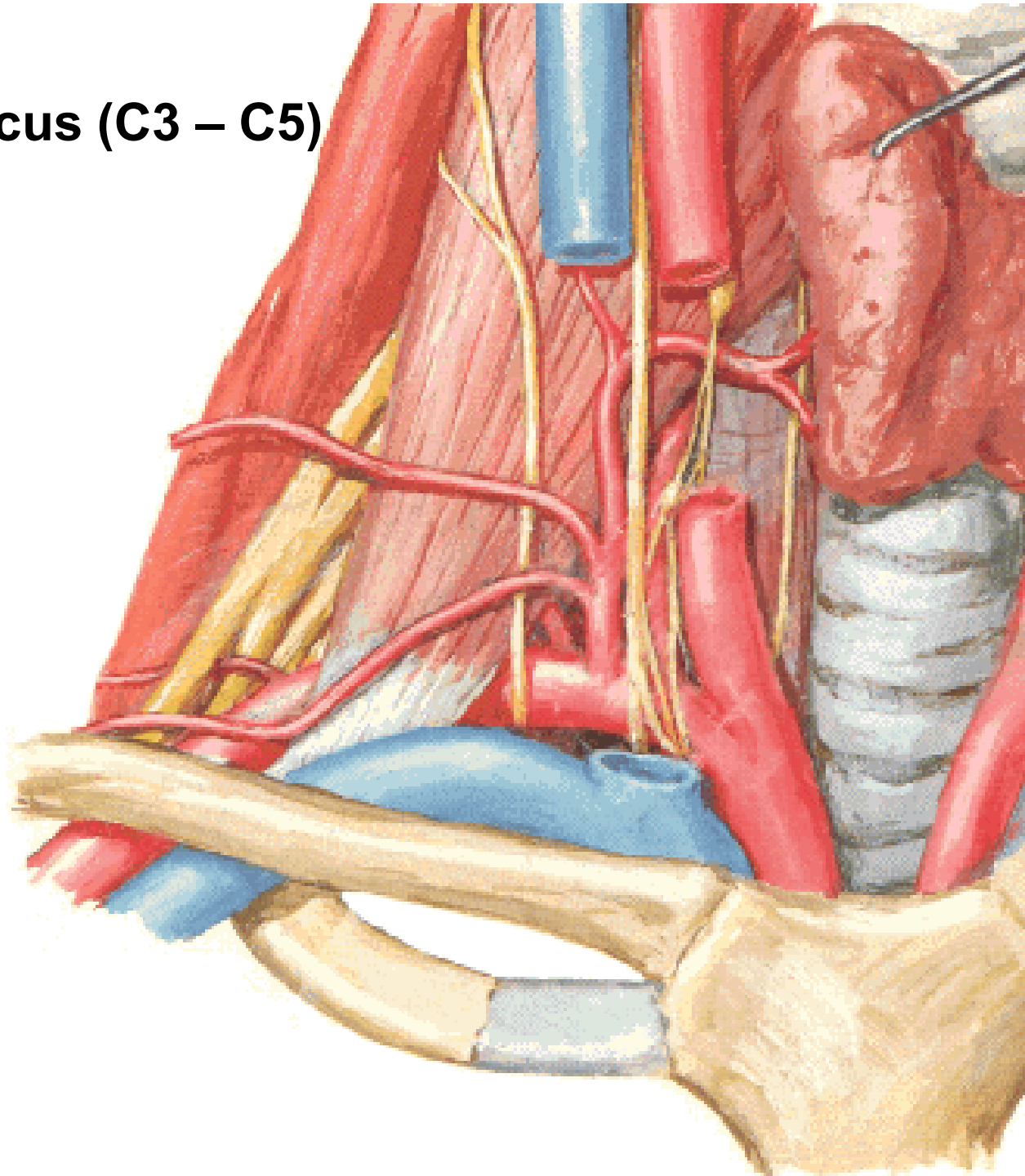
**Punctum nervosum  
(Erb)**



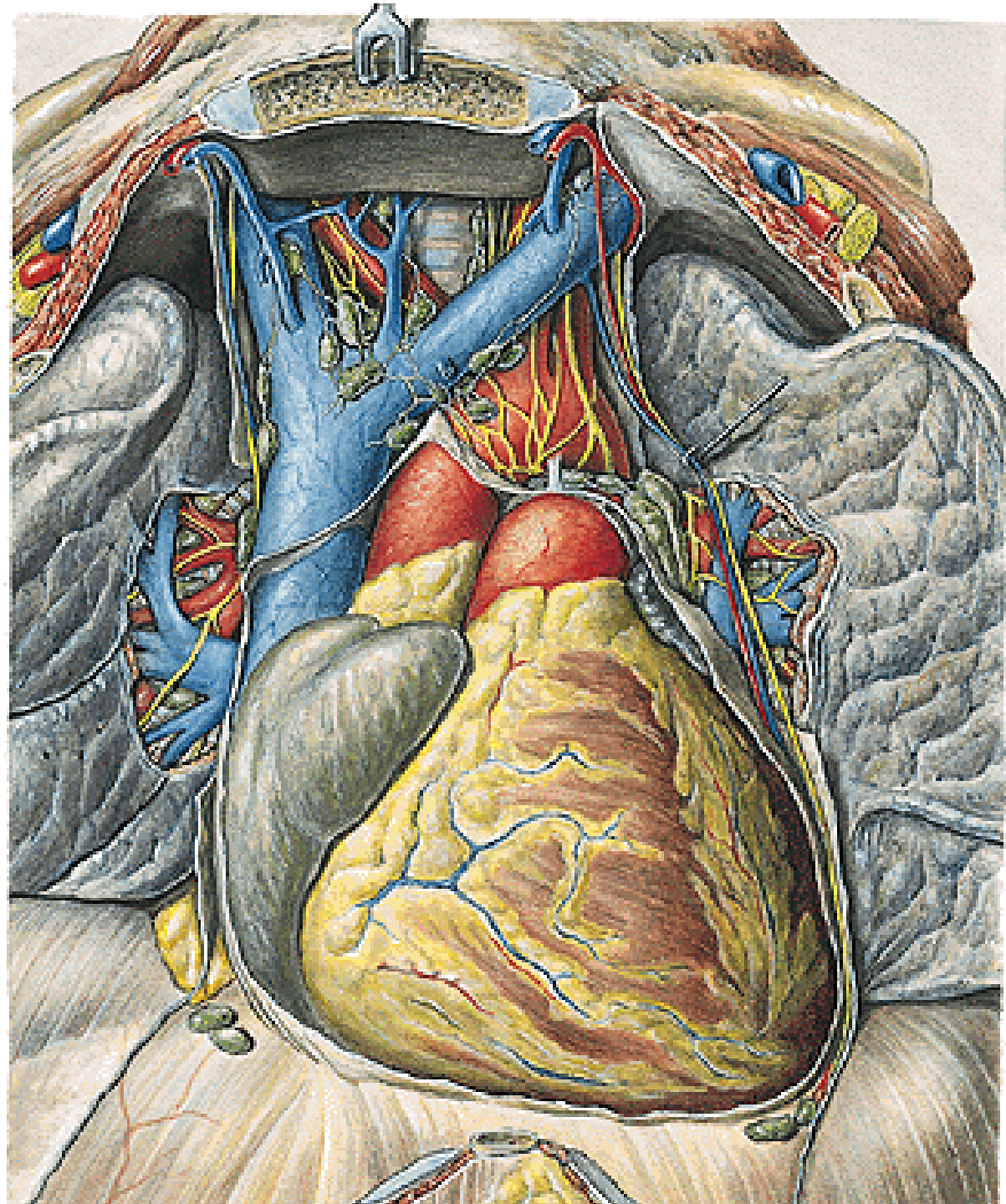


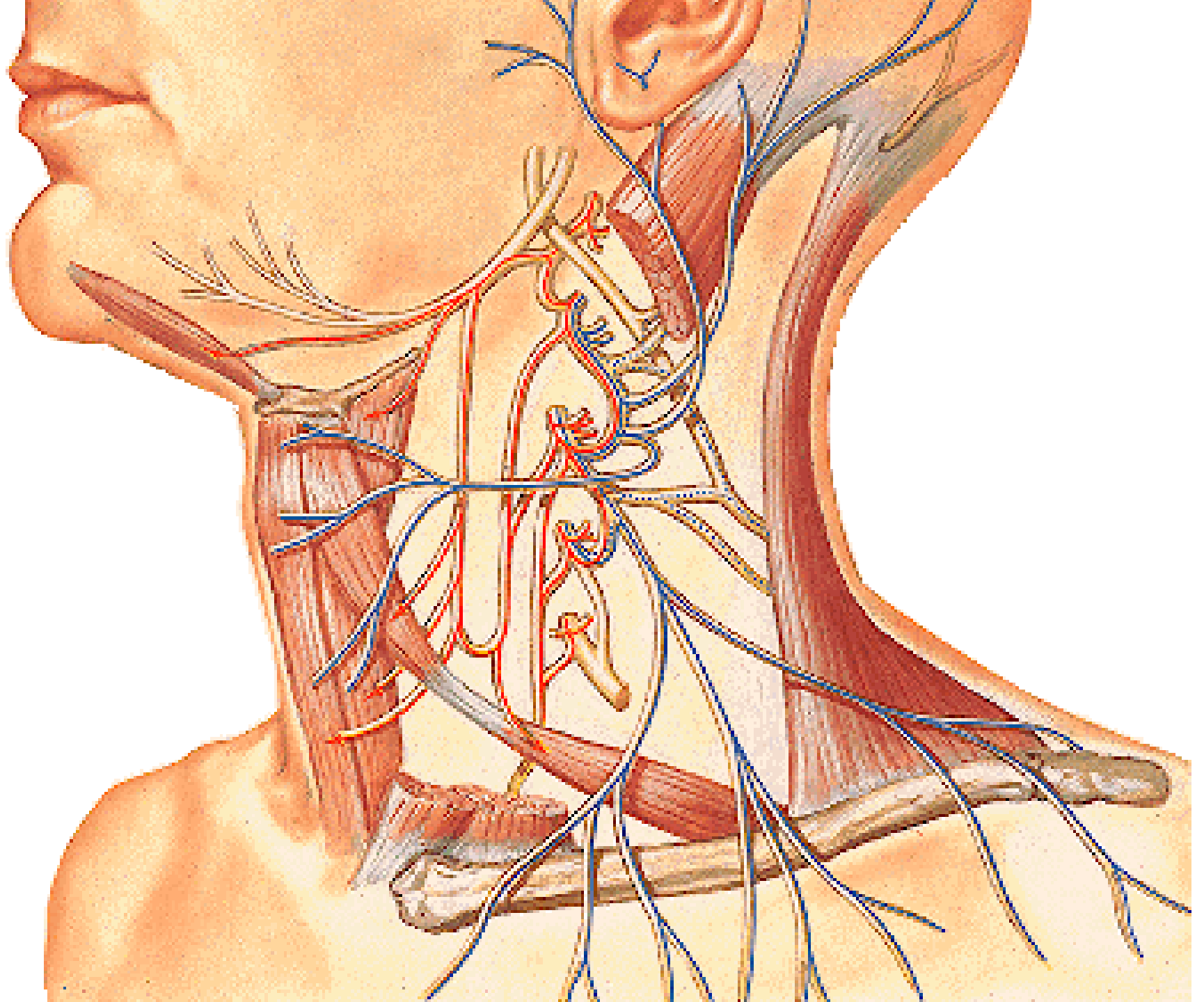


**N. phrenicus (C3 – C5)**









Illustrations and photographs were copied from:  
**Atlas der Anatomie des Menschen/Sobotta.**  
**Putz,R., und Pabst,R. 20. Auflage. München:**  
**Urban & Schwarzenberg, 1993**  
**Netter: Interactive Atlas of Human Anatomy.**  
**Windows Version 2.0**