

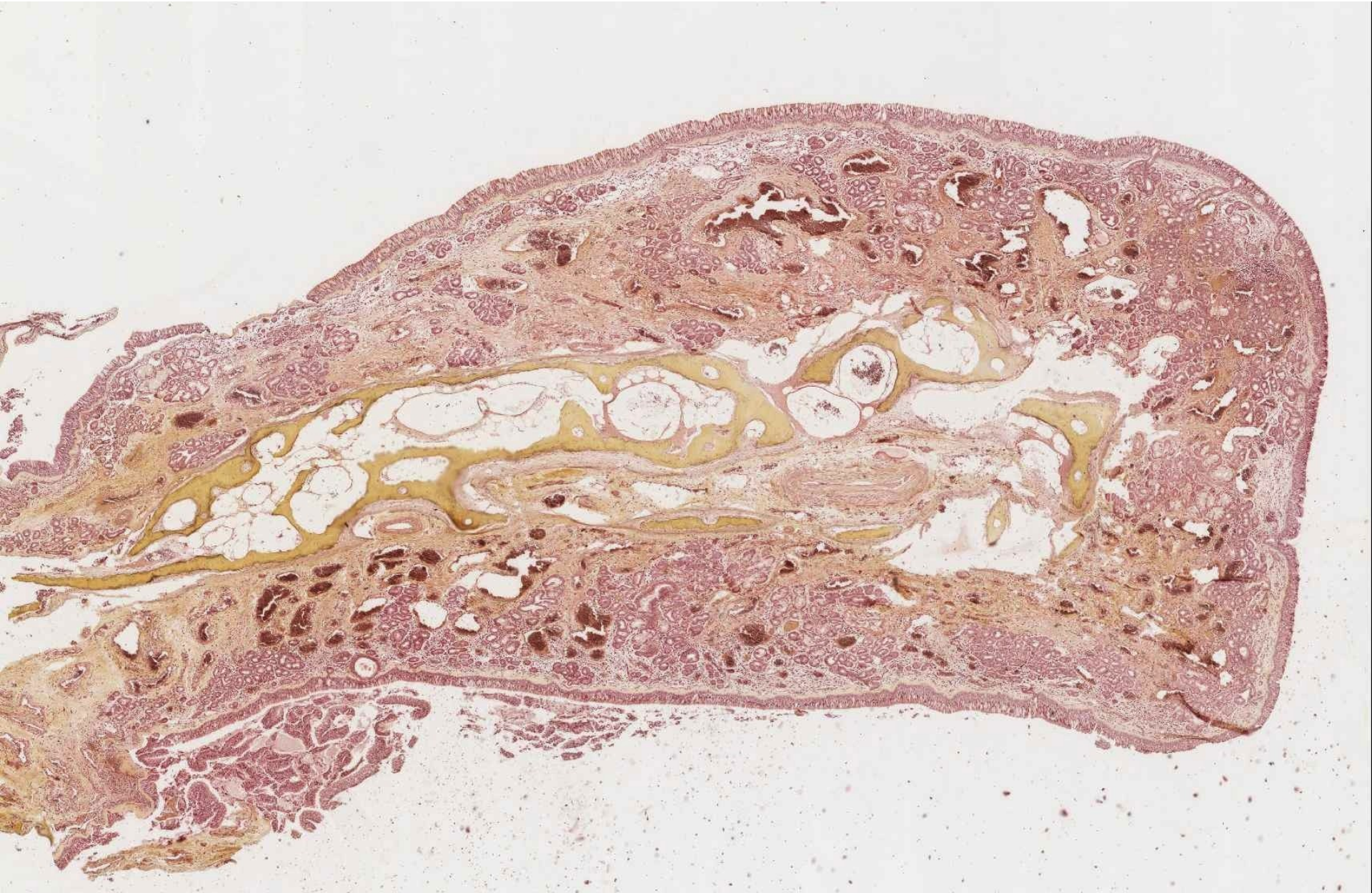


RESPIRATORY SYSTEM

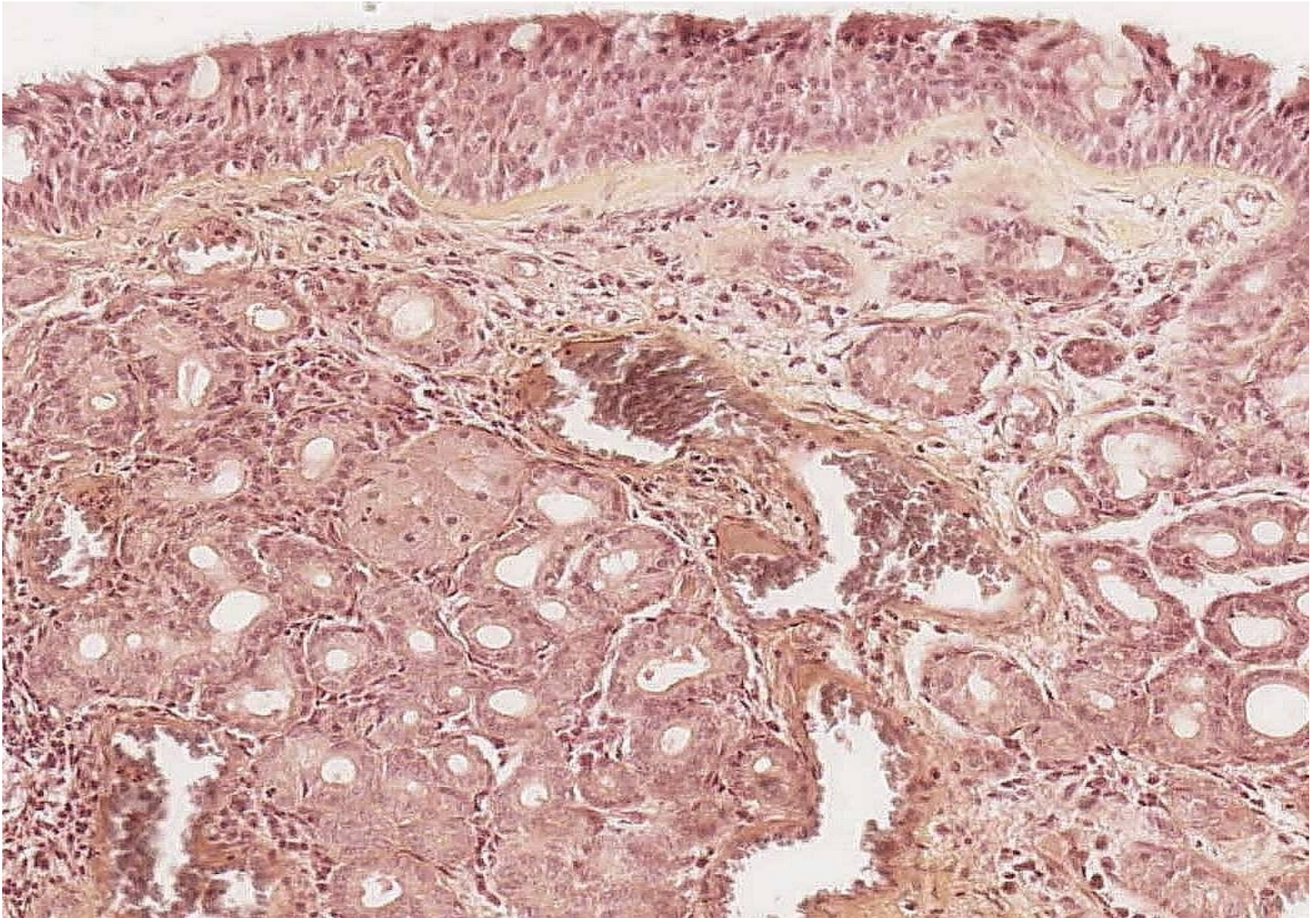
- Respiratory passages
 - Nasal cavity (concha nasi)
 - Pharynx
 - Larynx
 - Trachea
 - Bronchi

- Lung (pulmo)

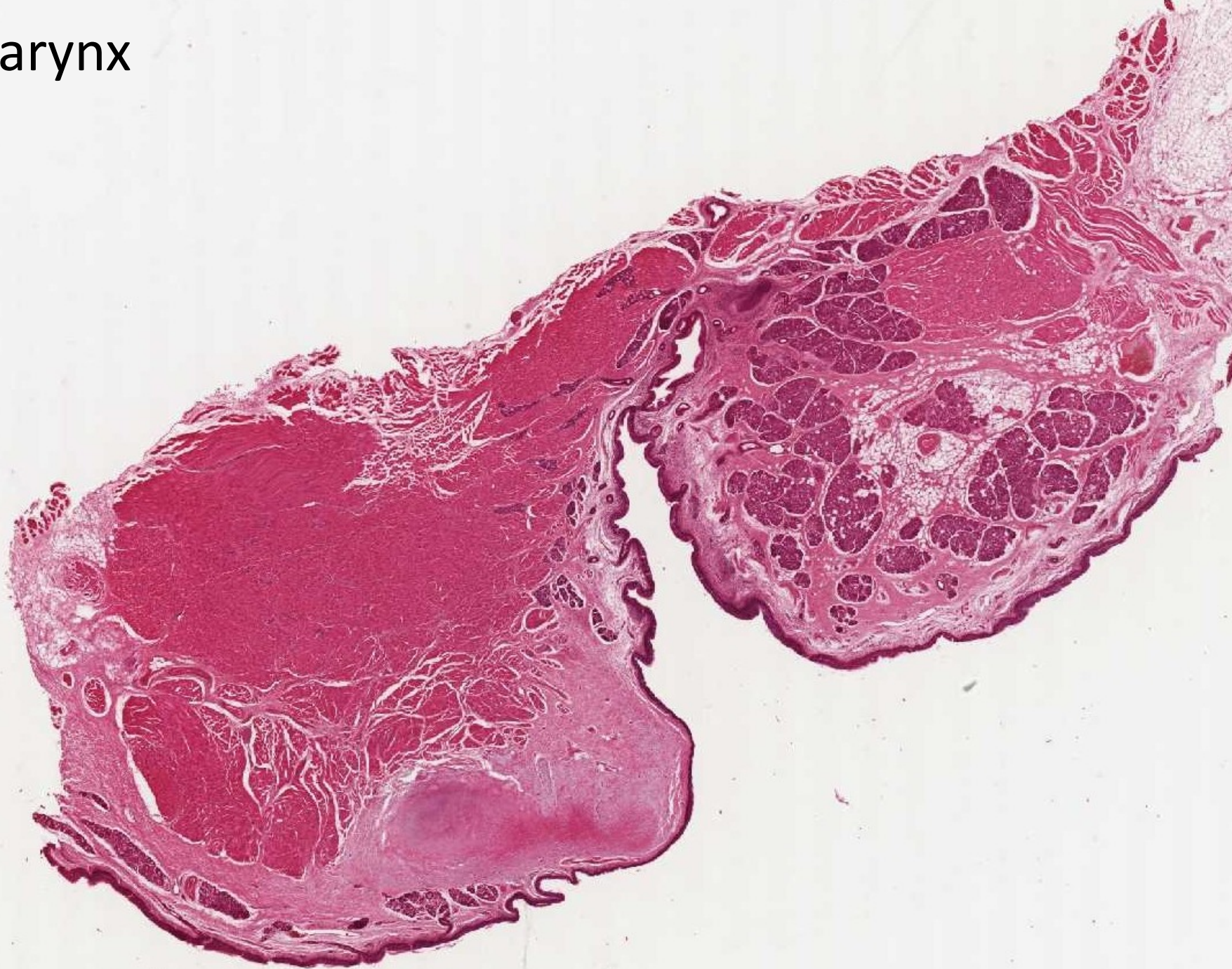
Concha nasi



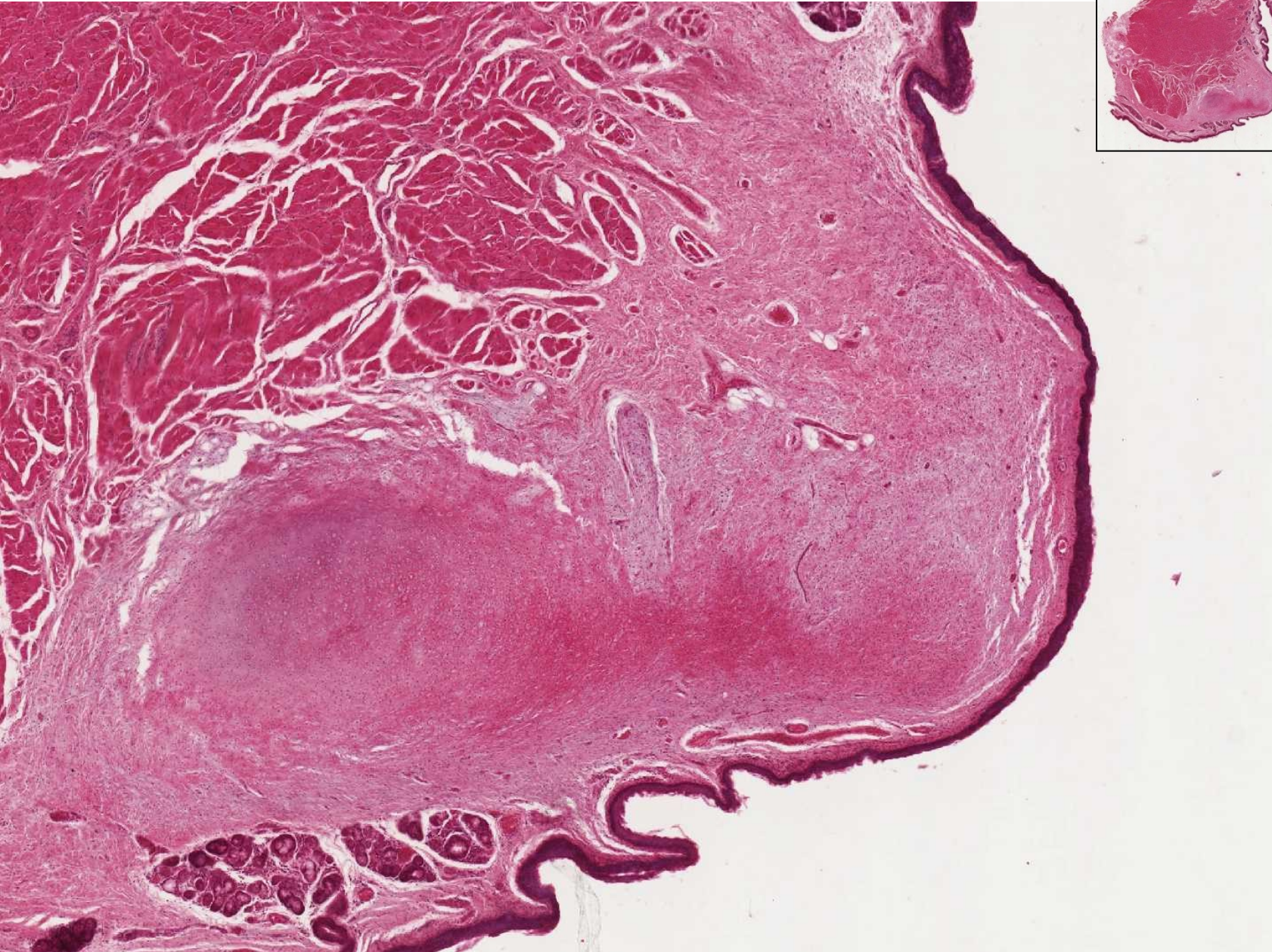
Concha nasi – sensory epithelium, Bowman's glands



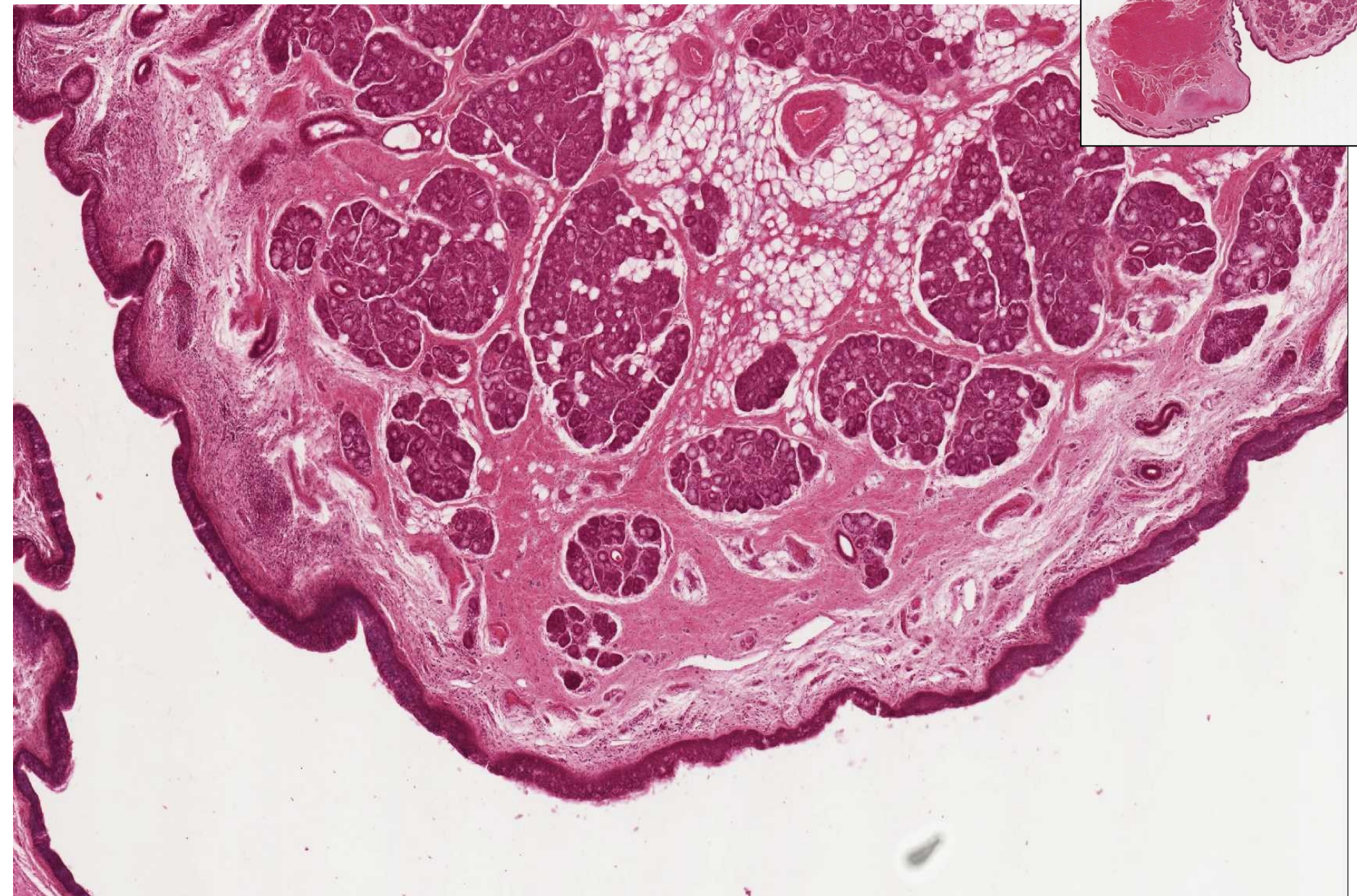
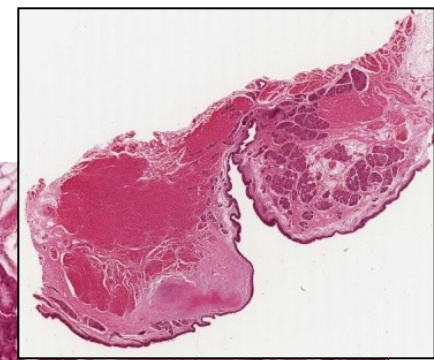
Larynx



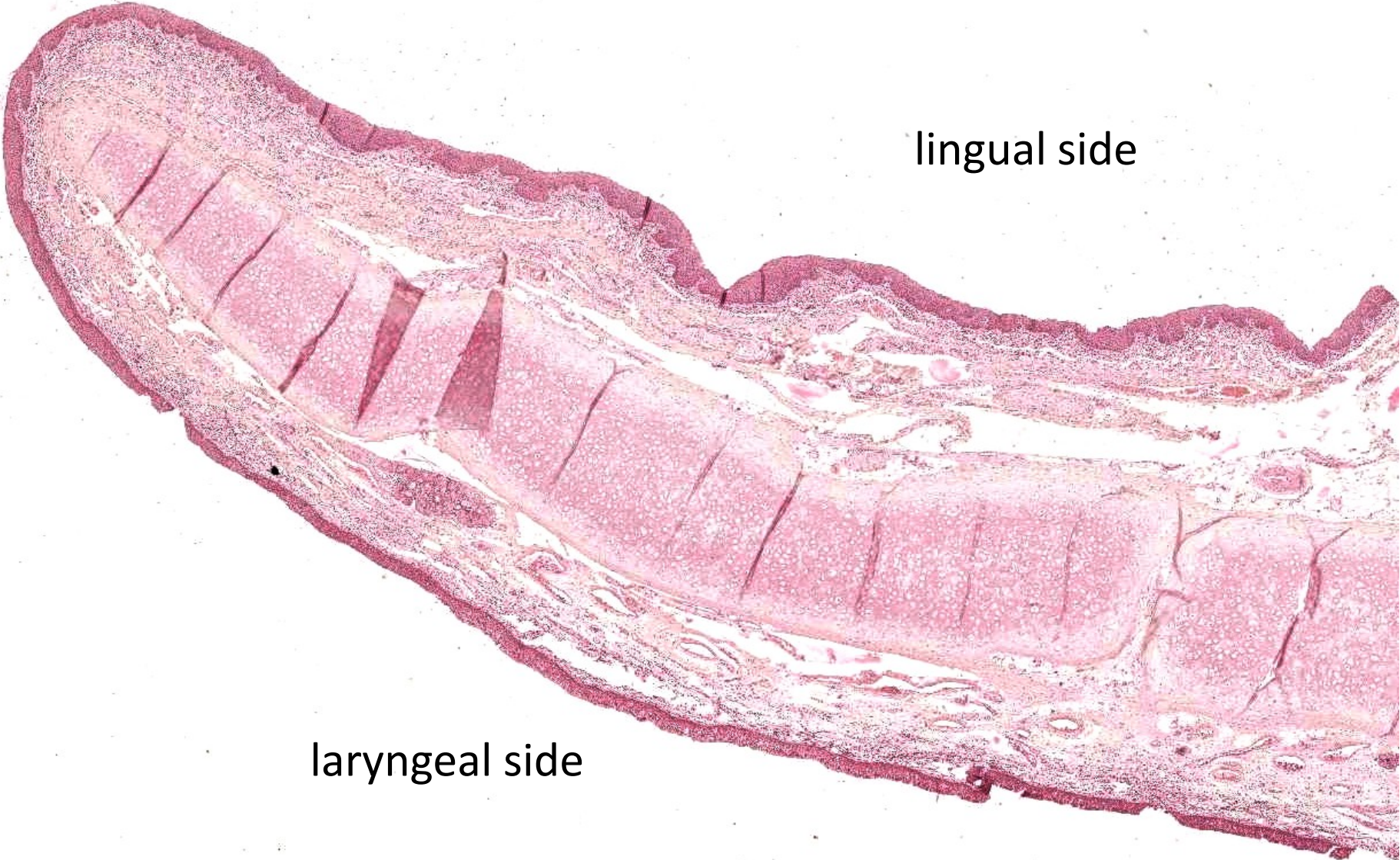
Larynx – plica vocalis



Larynx – plica ventricularis



Epiglottis

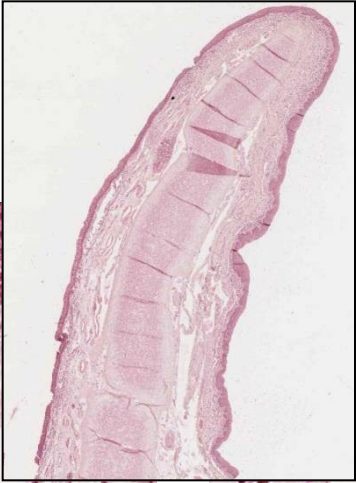
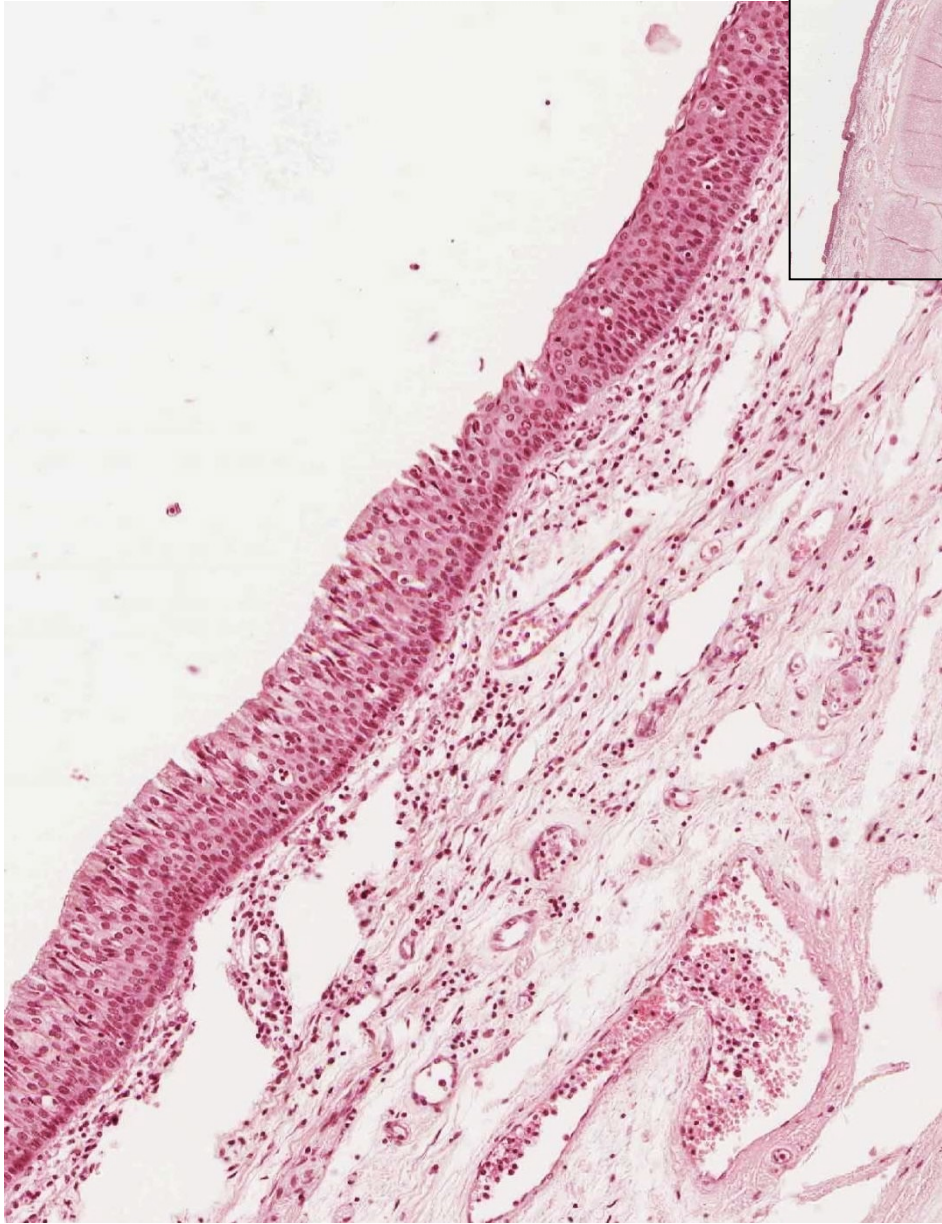


lingual side

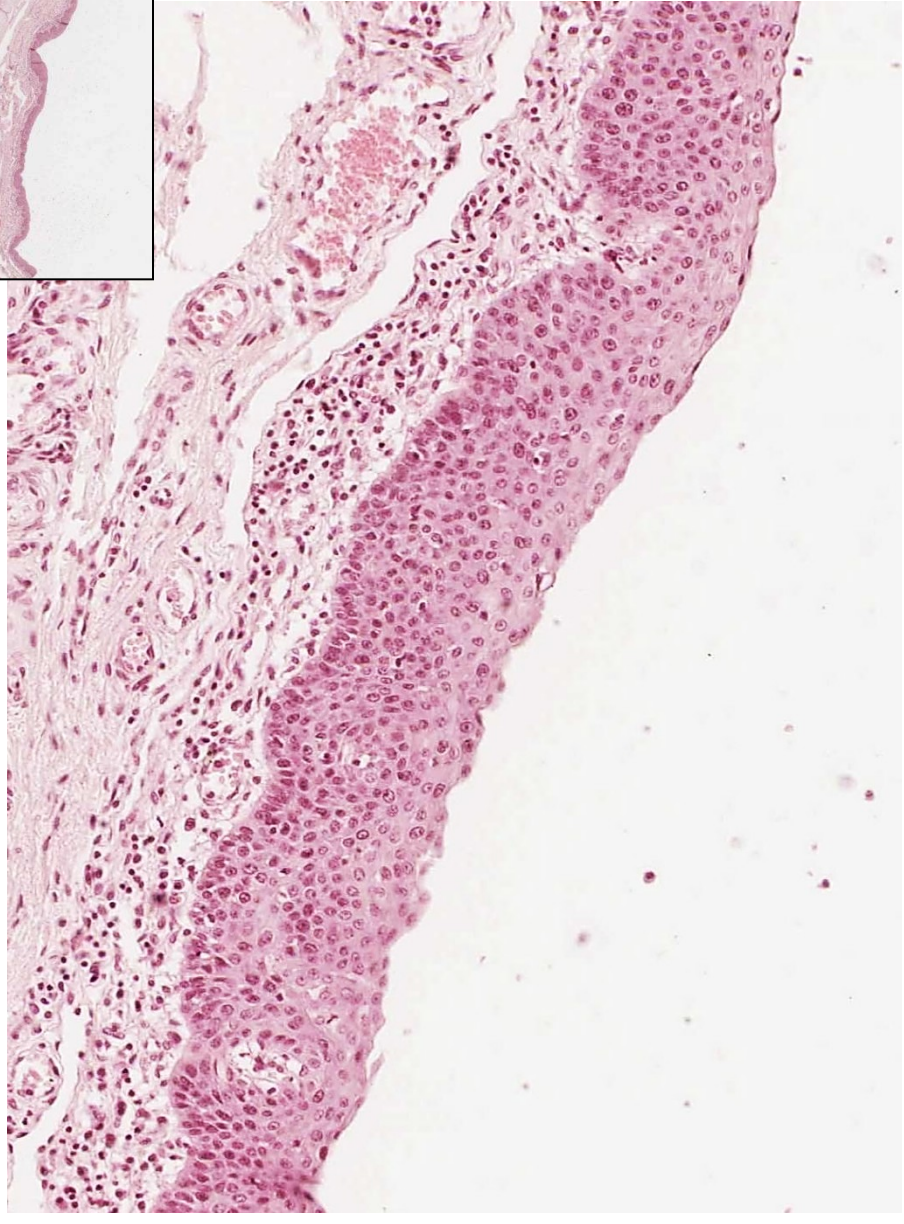
laryngeal side

Epiglottis

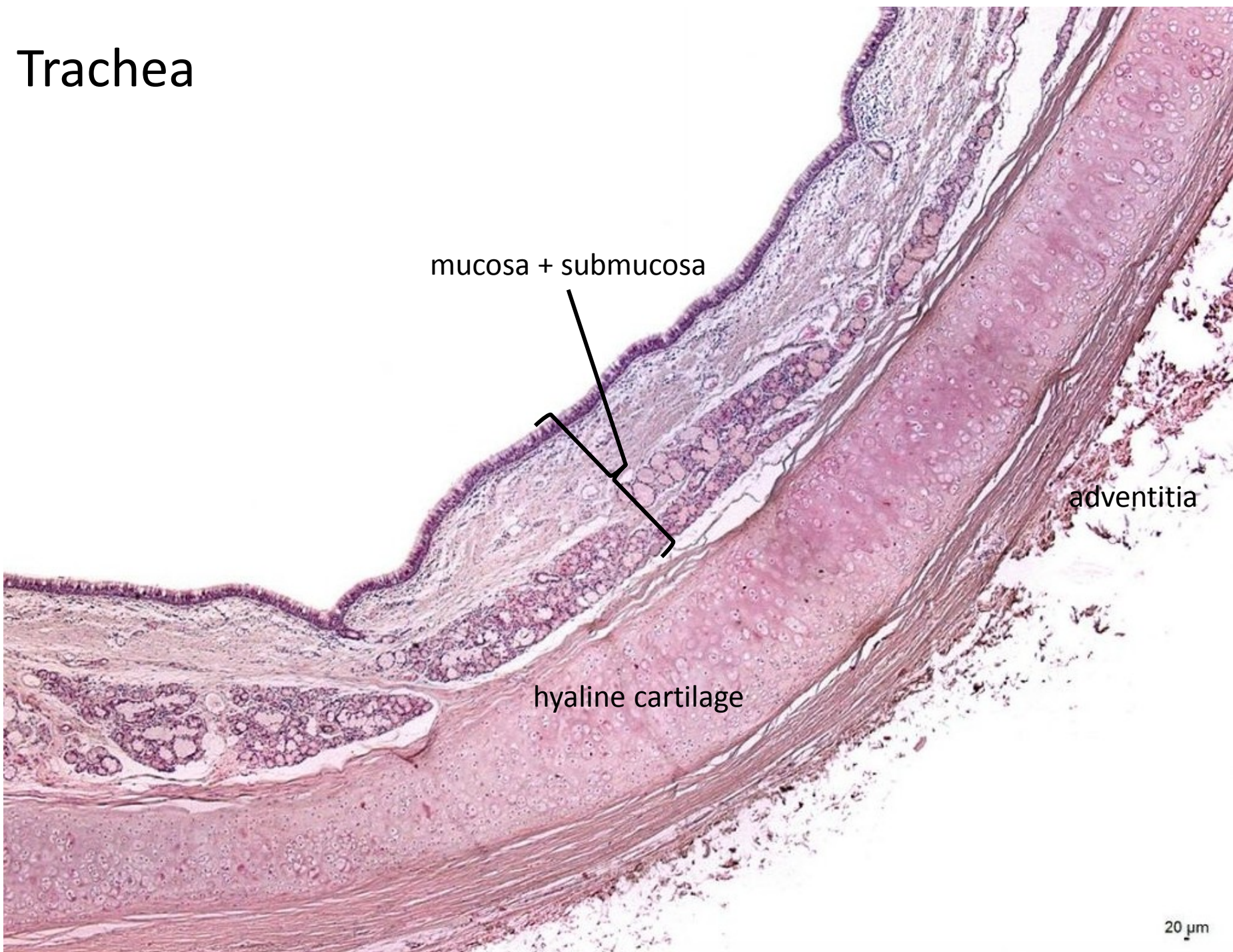
laryngeal side



lingual side



Trachea



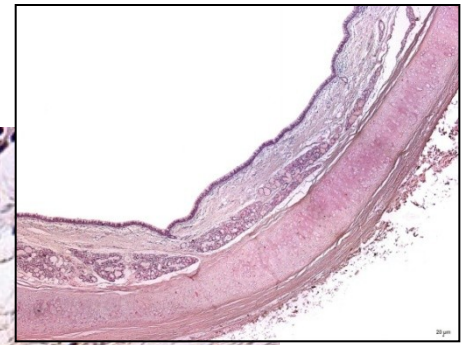
mucosa + submucosa

adventitia

hyaline cartilage

20 μm

Trachea - mucosa



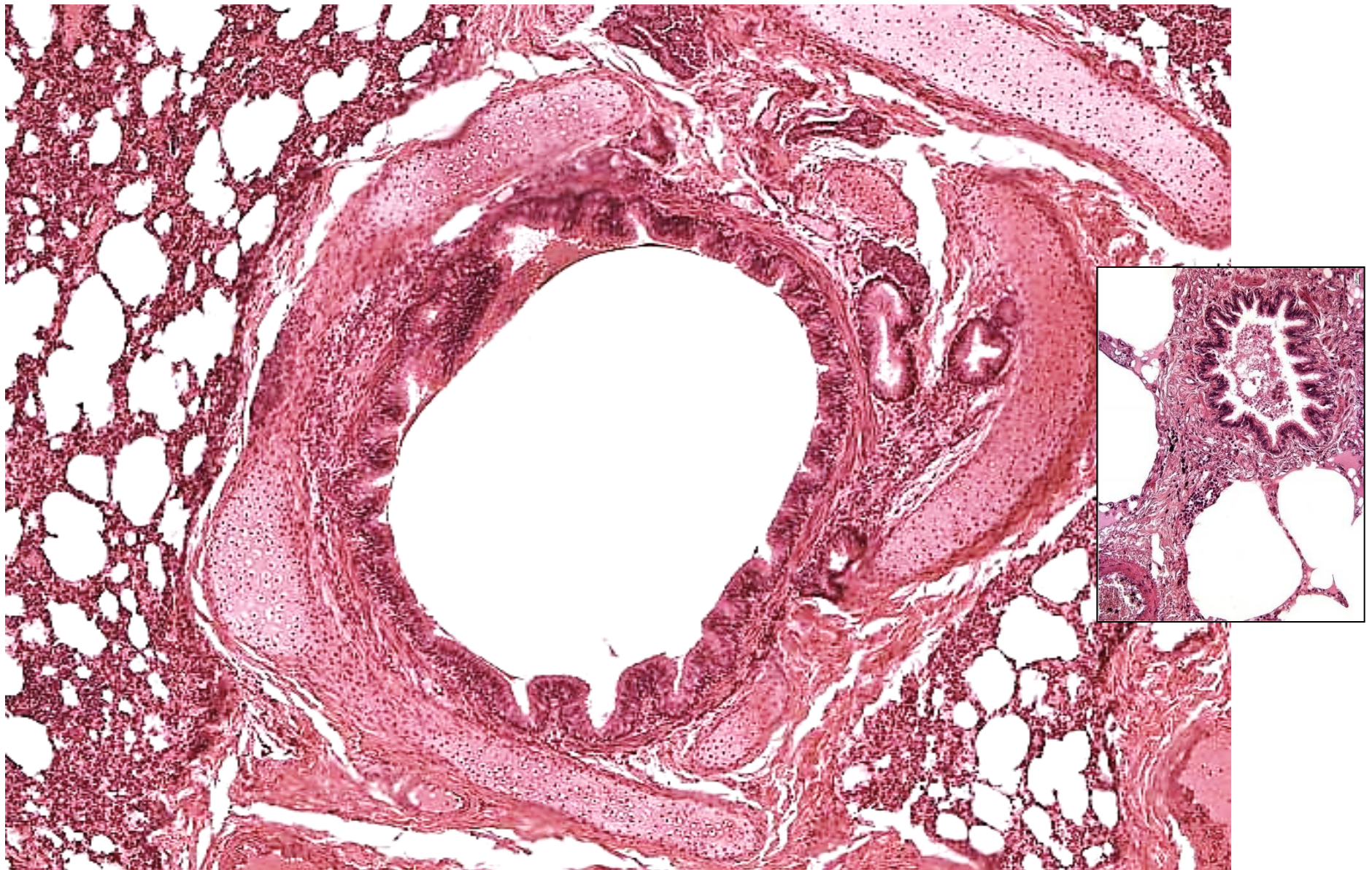
mixed glands

20 μ m

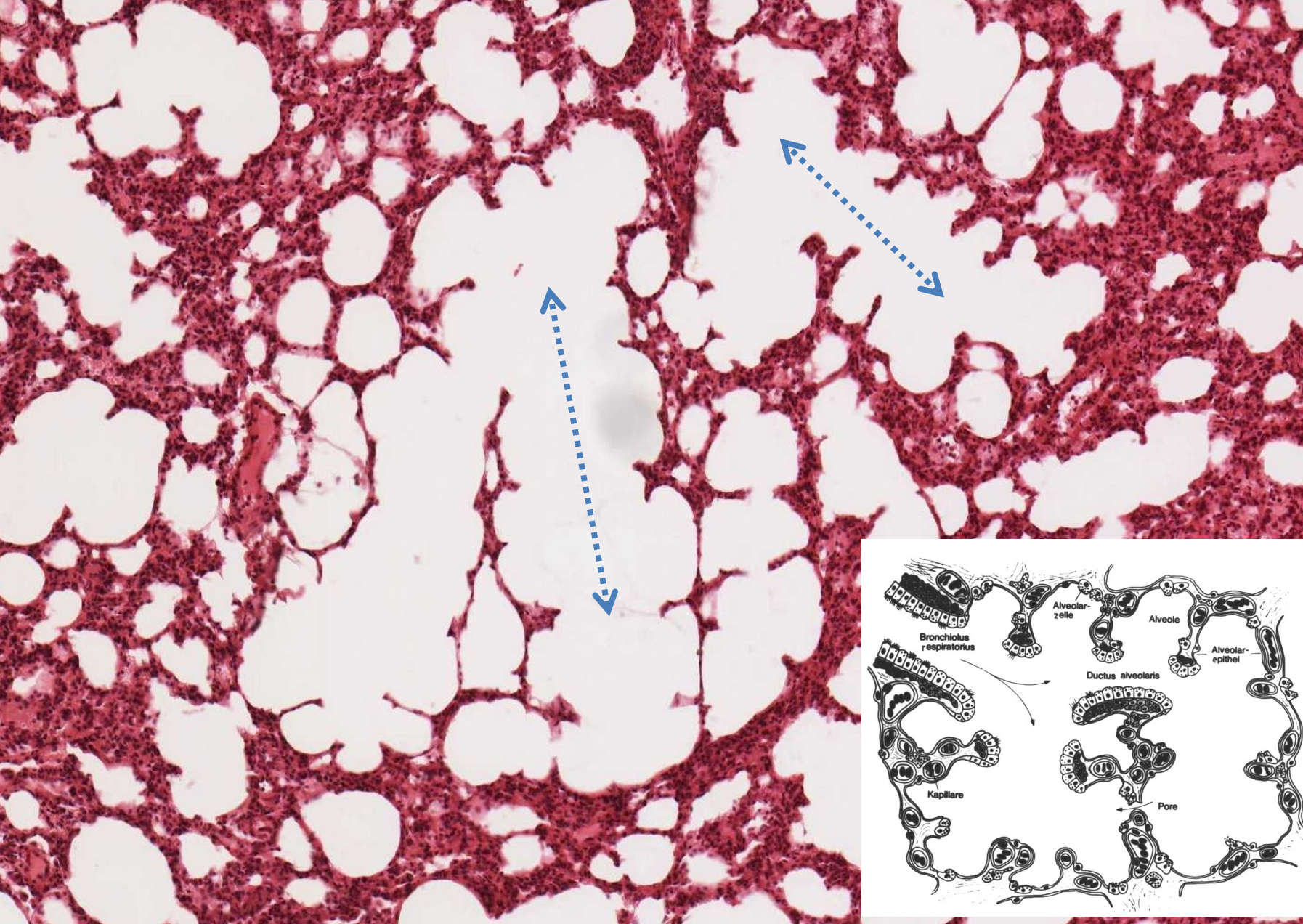
Lung



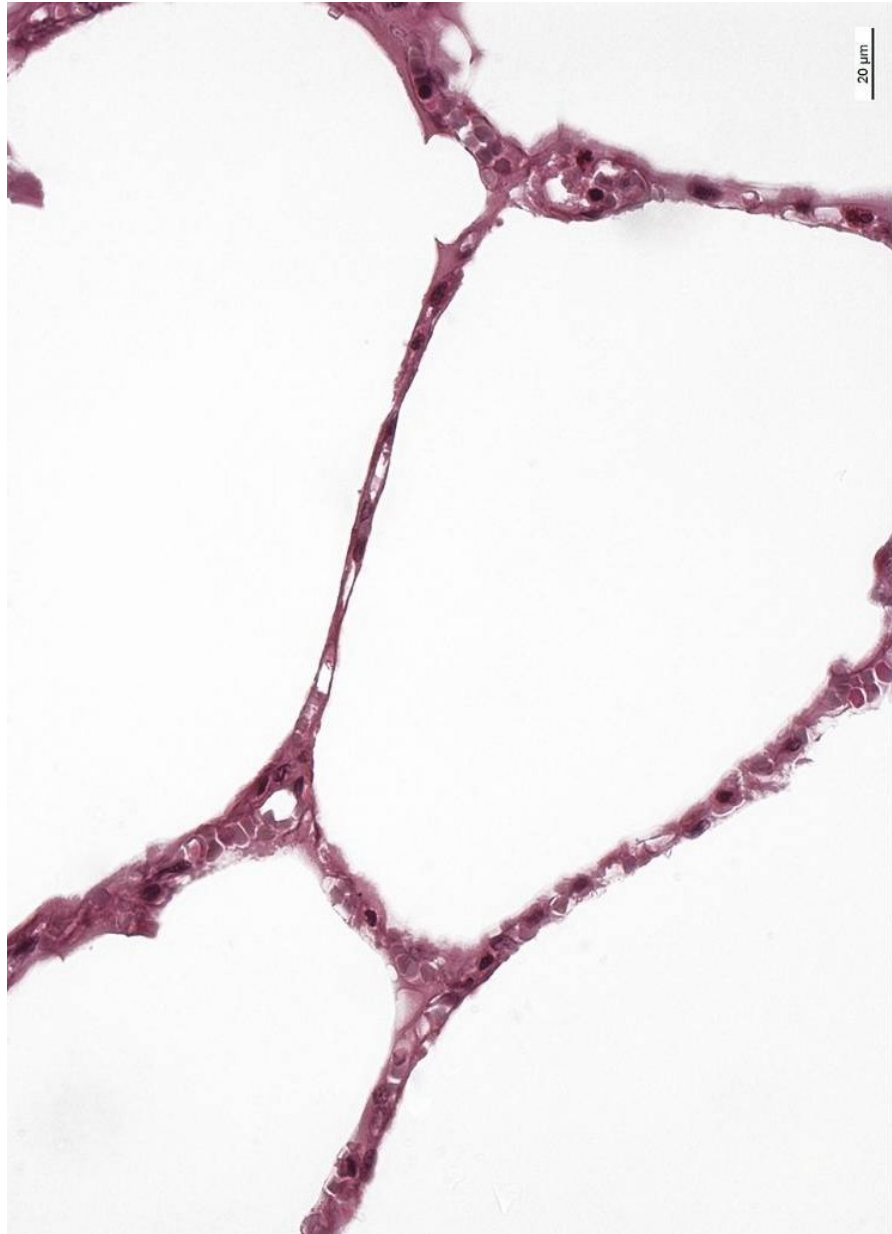
Bronchus / terminal bronchiole



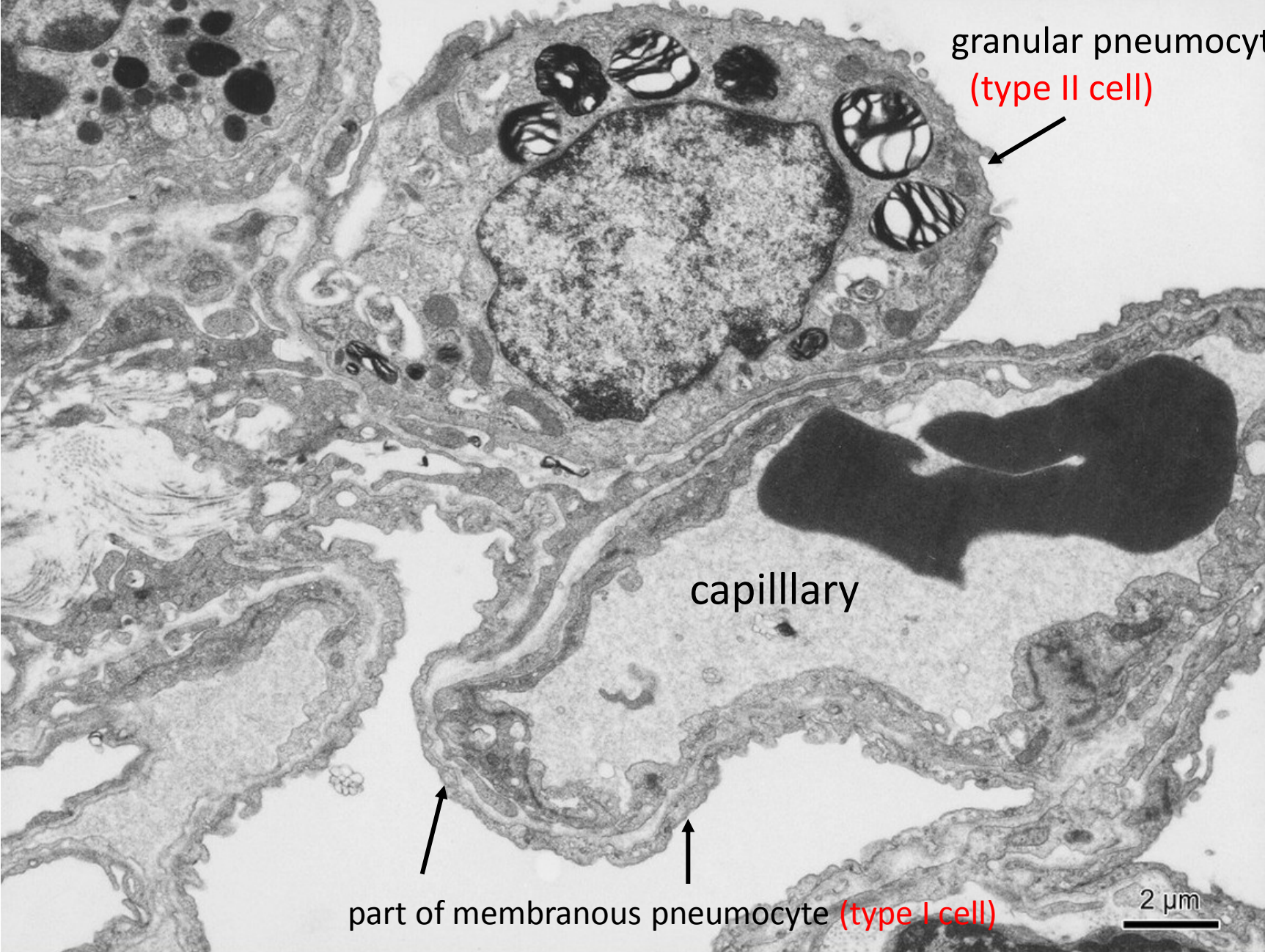
Ductus alveolaris (alveolar duct)



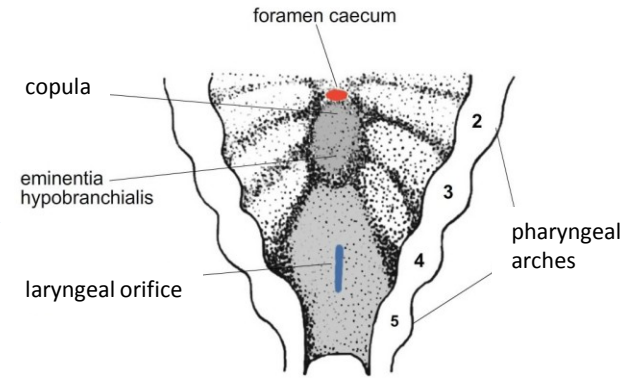
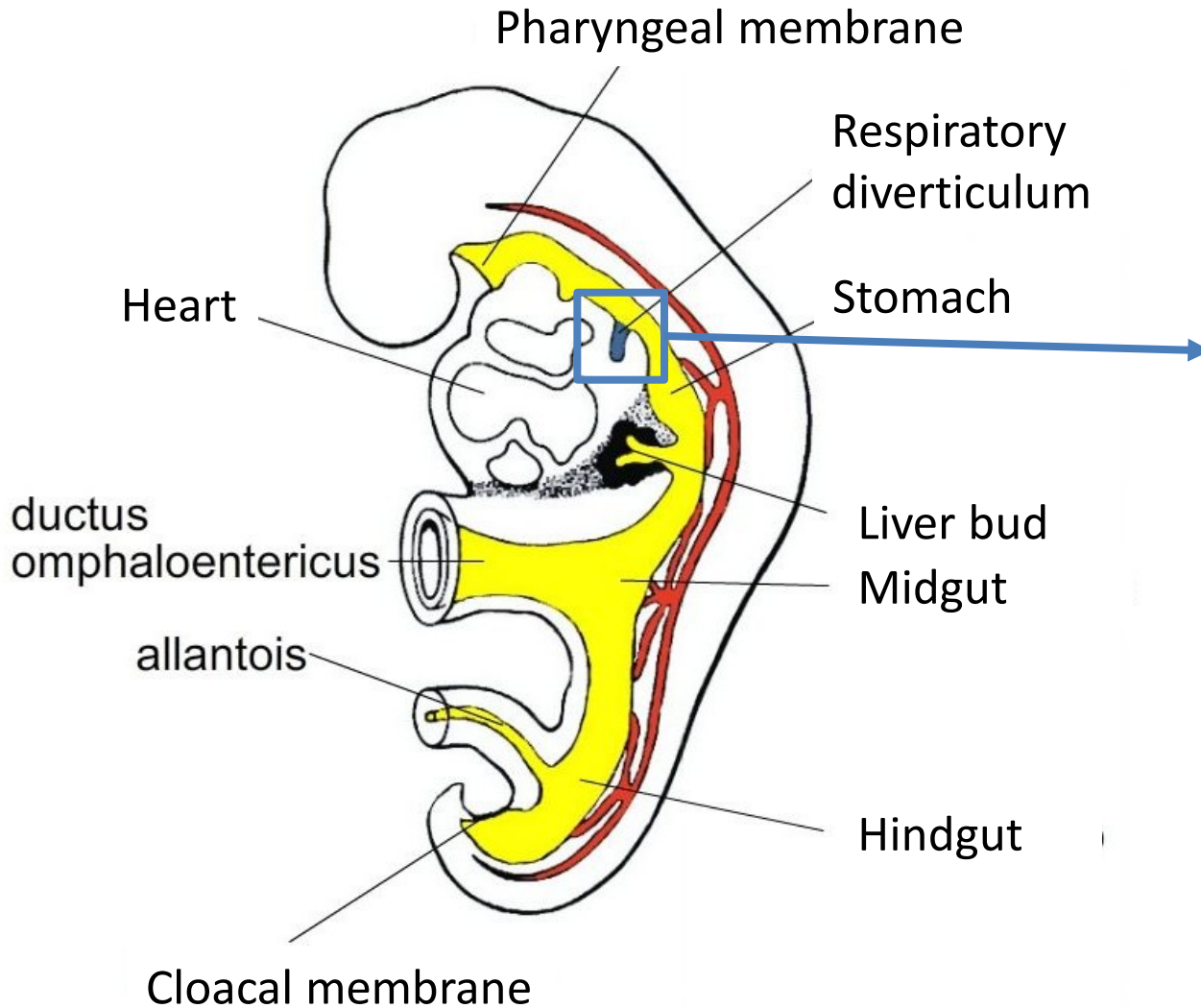
Terminal bronchiole / alveoli



Interalveolar septum, respiratory epithelium



Development of respiratory system

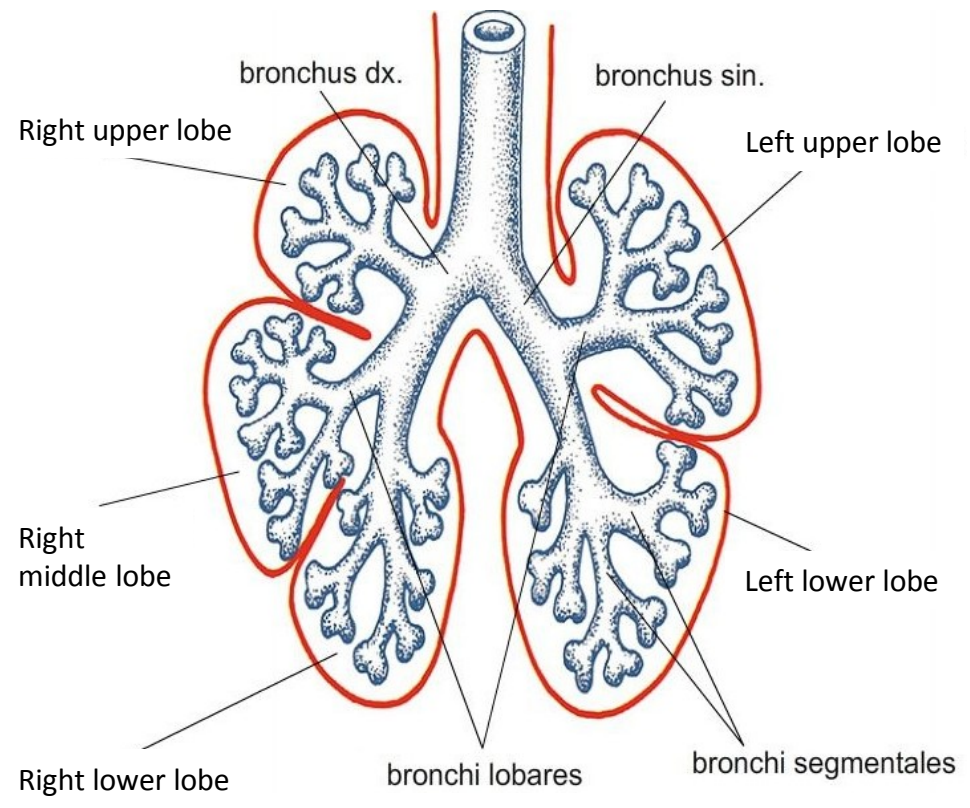
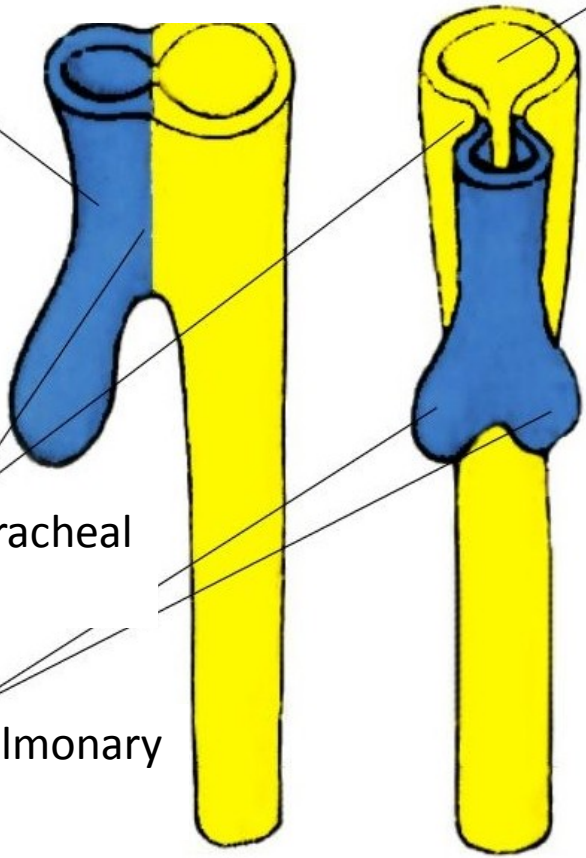


Respiratory diverticulum

Foregut

Esophagotracheal ridge

Bronchopulmonary buds





Respiratory system

Slides

24. Concha nasi

25. Epiglottis

26. Larynx

27. Trachea

29. Pulmo

Atlas EM

Respiratory epithelium (51)