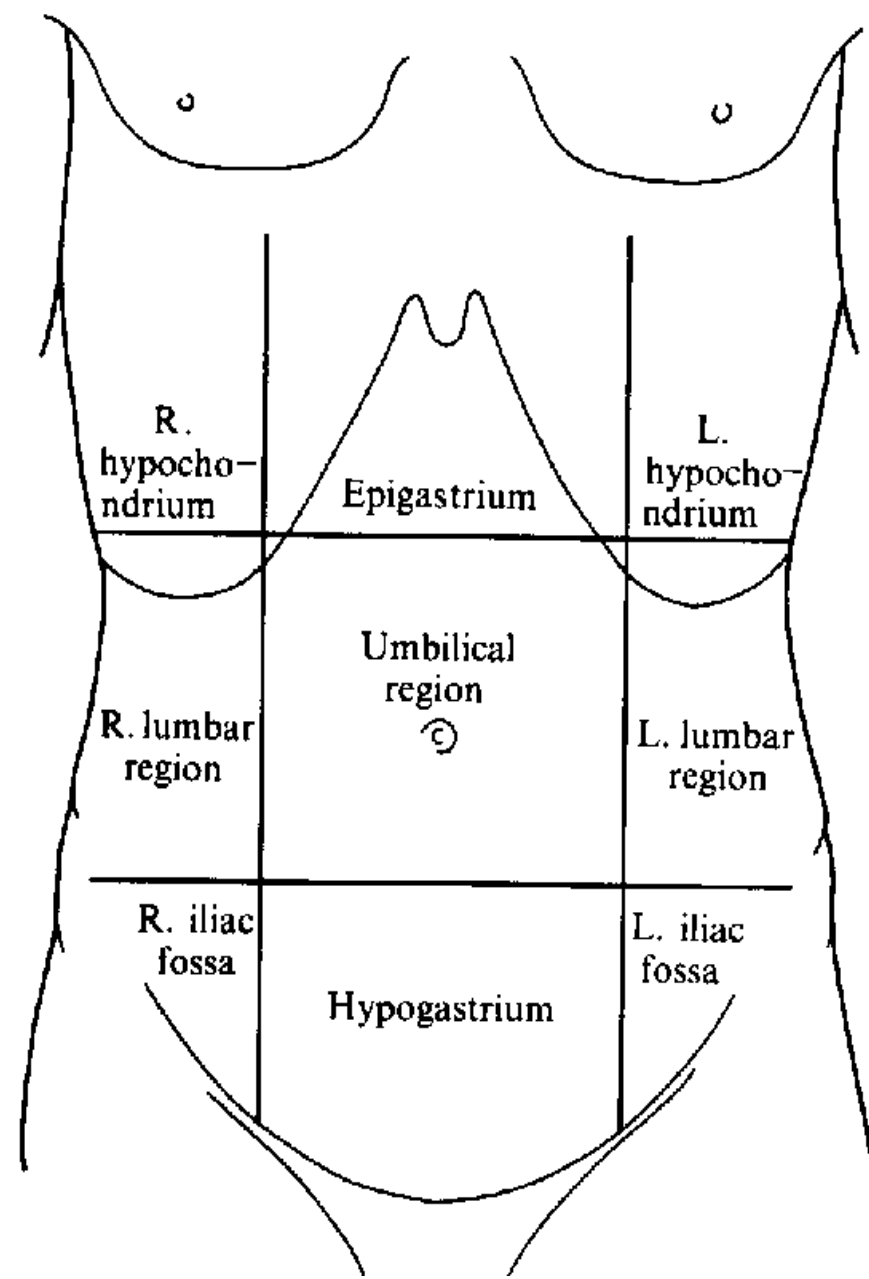
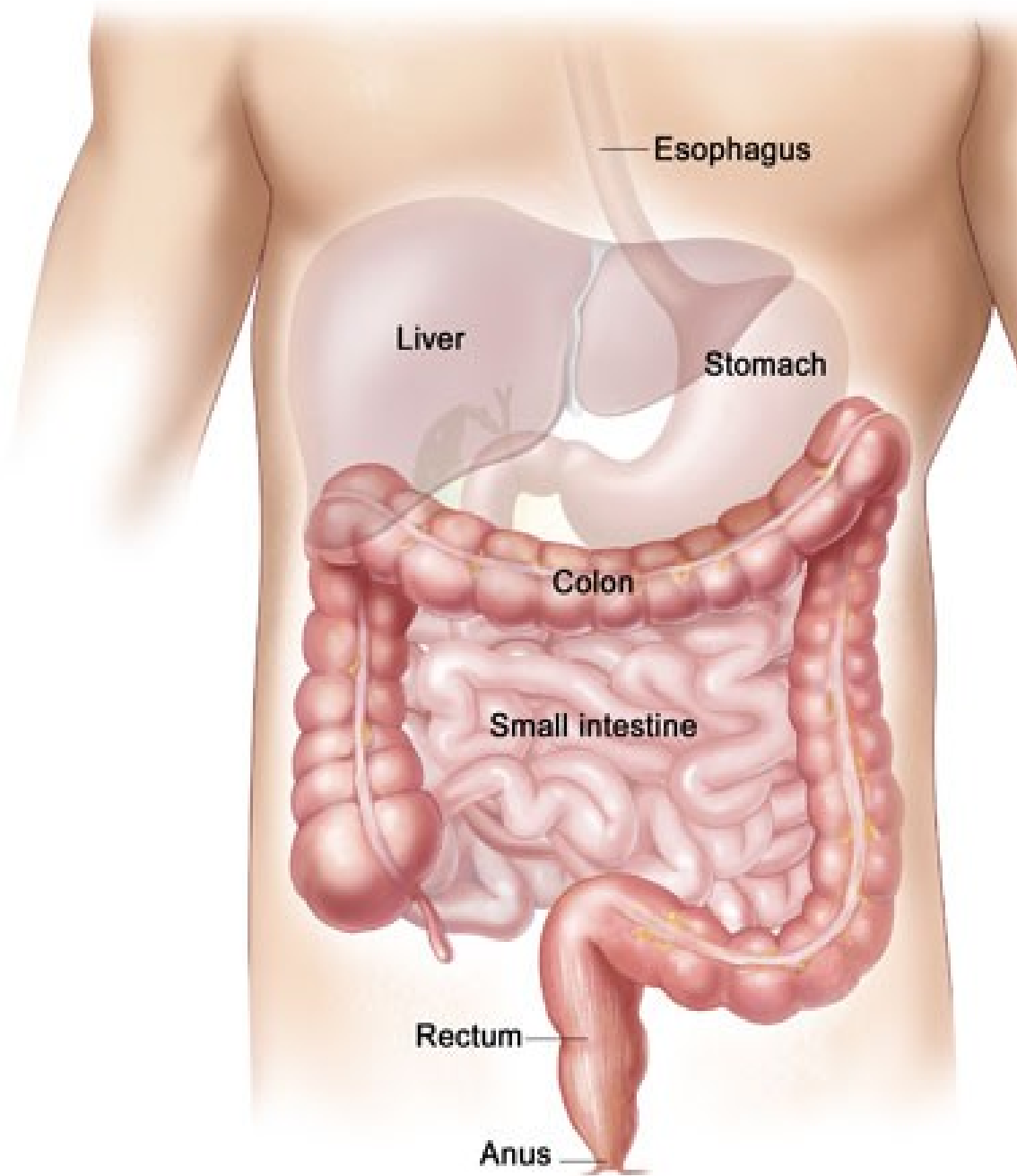
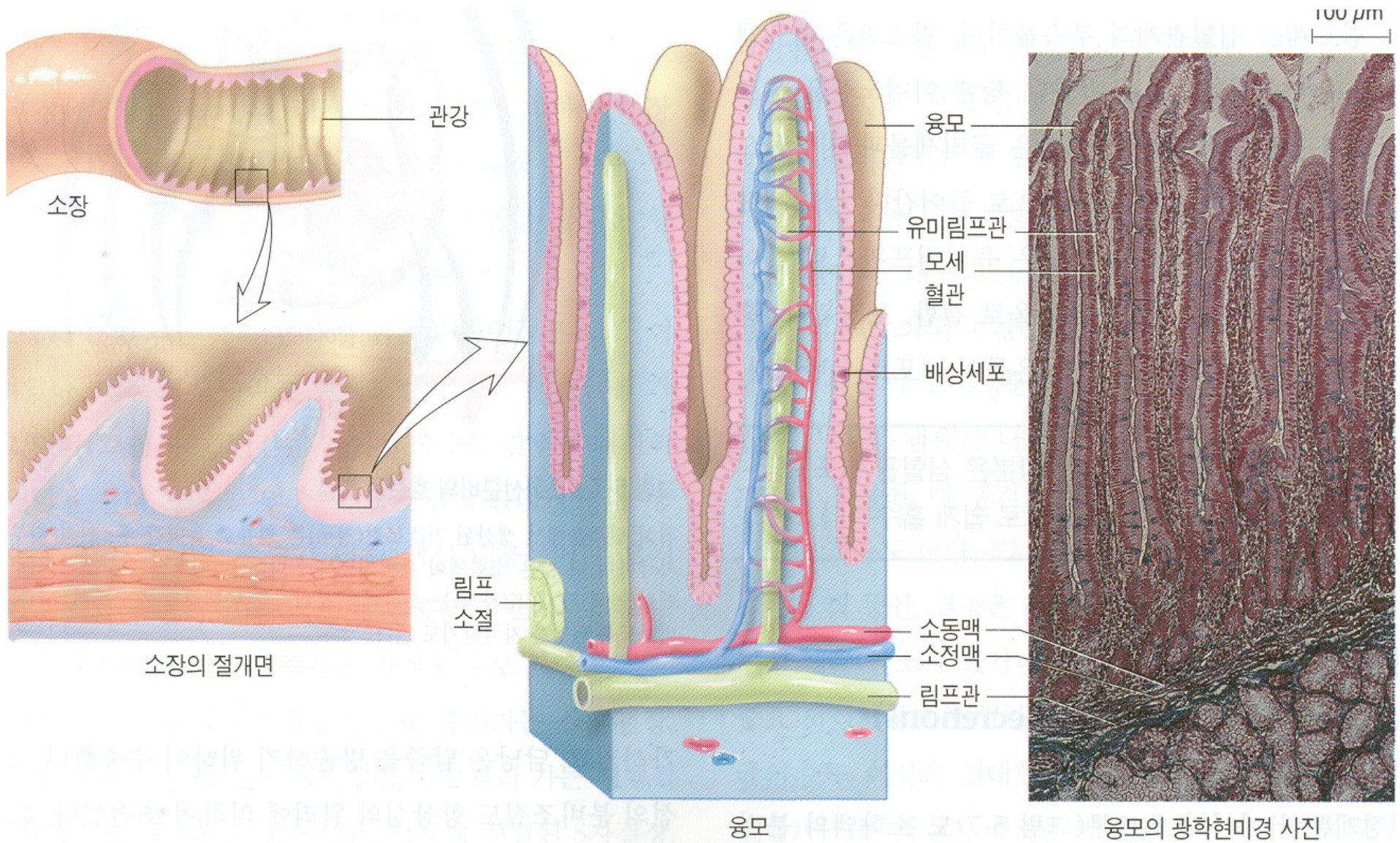


# Střeva

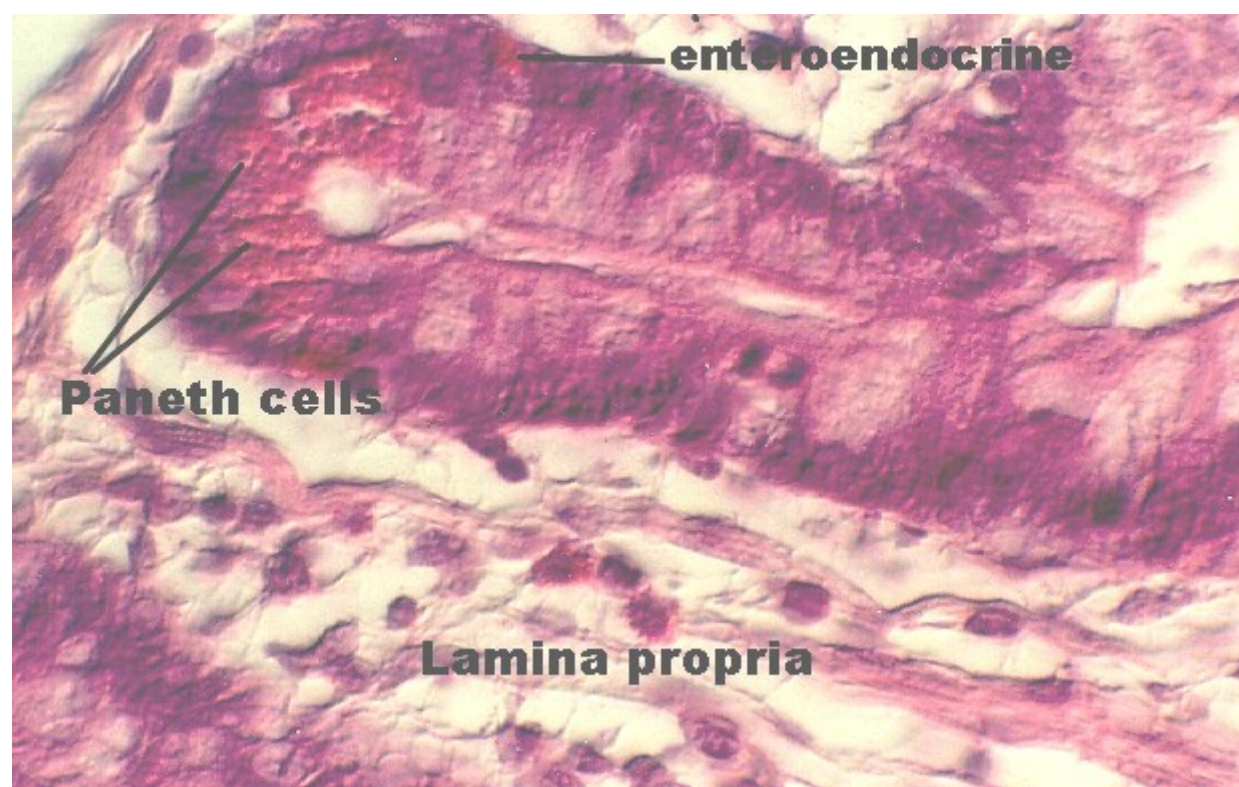
- tenké - duodenum
  - jejunum
  - ileum
- tlusté - caecum (+ appendix vermiformis)
  - colon ascendens
    - transversum
    - descendens
  - sigmoideum
- rectum

canalis analis (vývojově nikoli střevo)

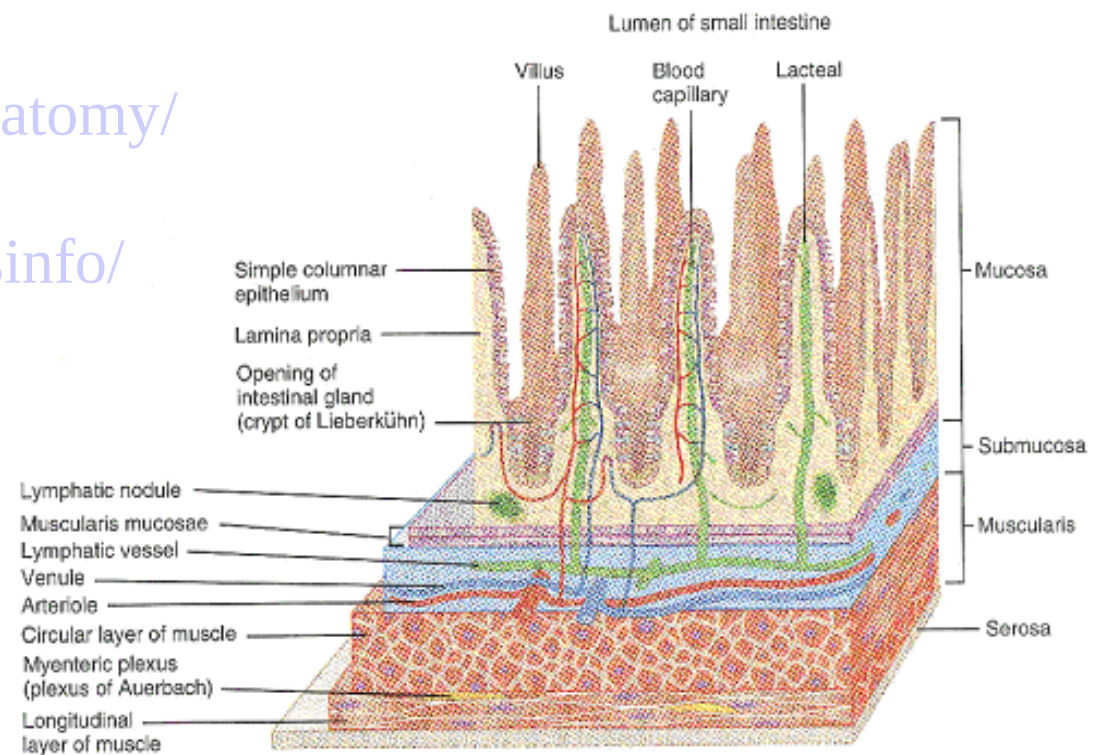




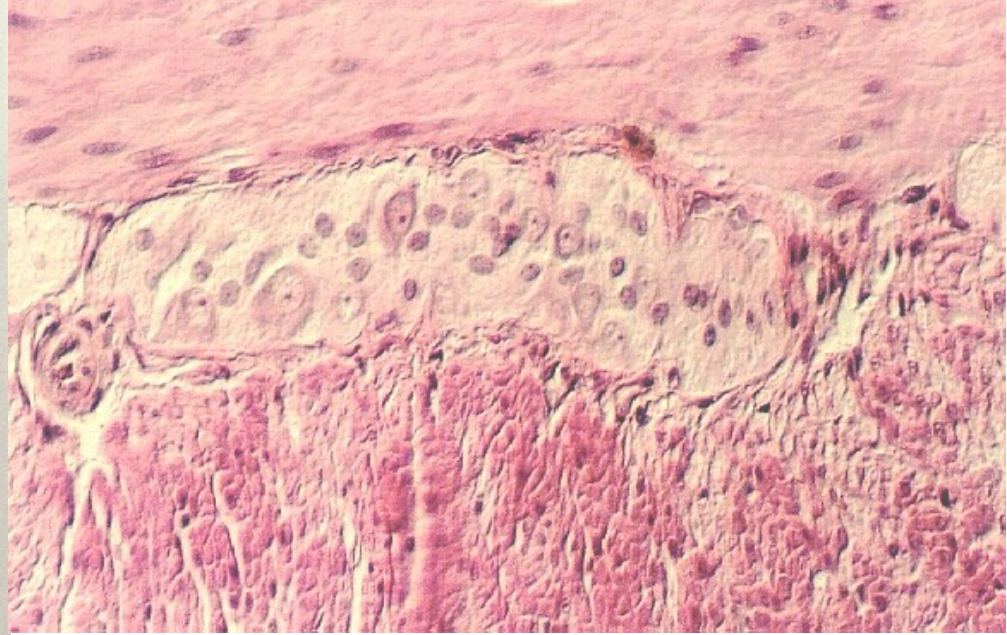
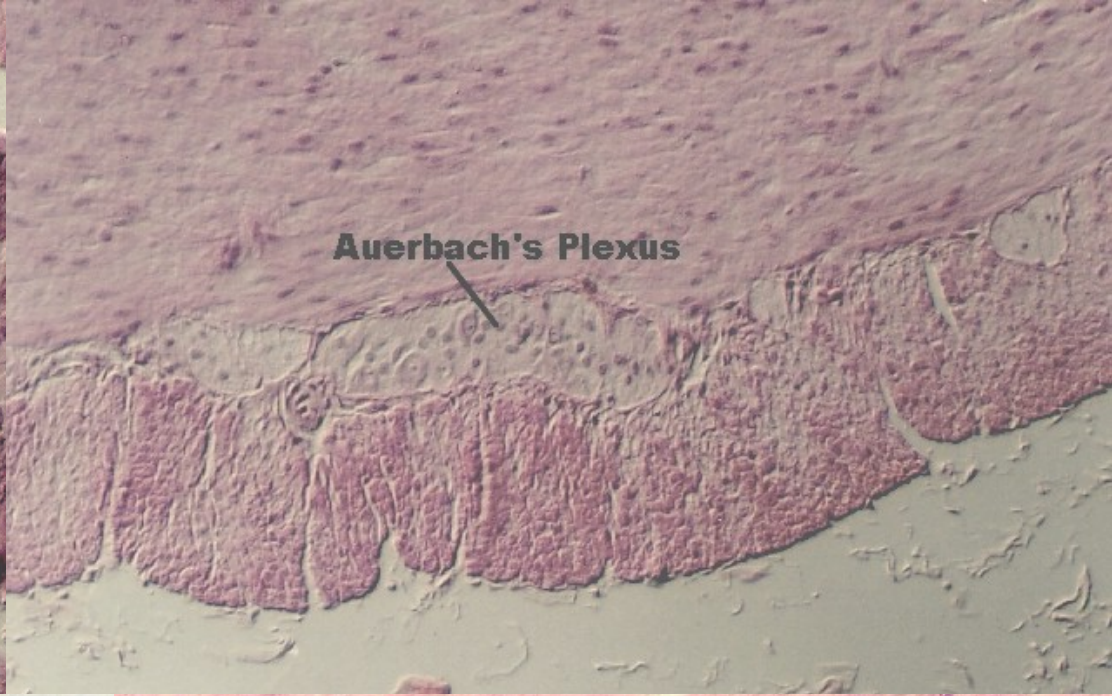




<http://cellbio.utmb.edu/microanatomy/digestive/Intestine.htm>  
[http://www.rivm.nl/interspeciesinfo/intra/human/int\\_small/](http://www.rivm.nl/interspeciesinfo/intra/human/int_small/)

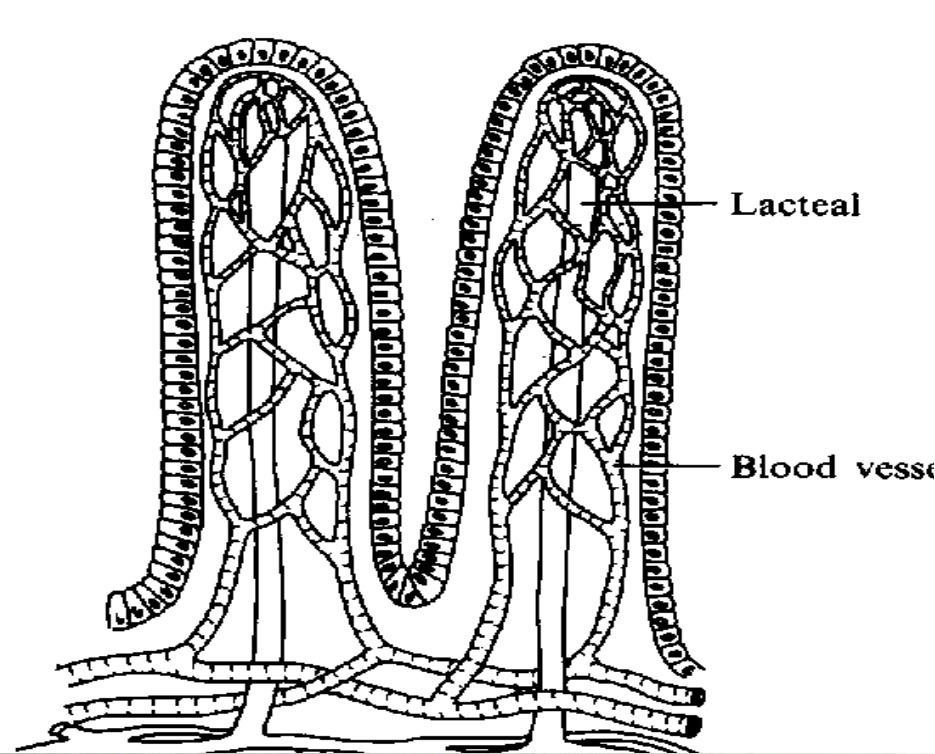






<http://cellbio.utmb.edu/microanatomy/digestive/Intestine.htm>





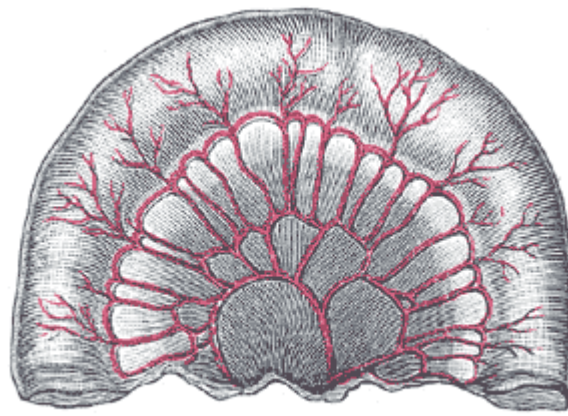
<http://cellbio.utmb.edu/micro-anatomy/digestive/Intestine.htm>  
<http://www.arthursclipart.com/medical/digesbw.htm>



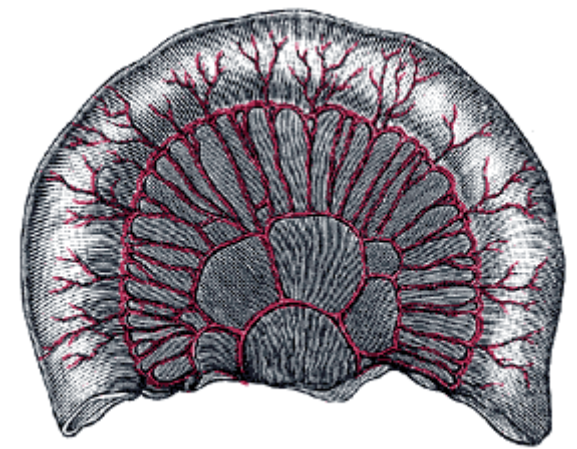




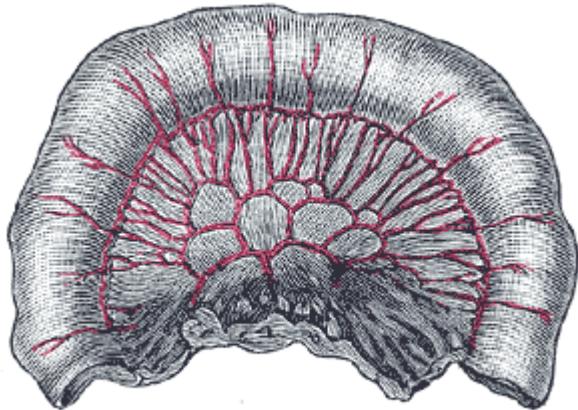
Three feet.



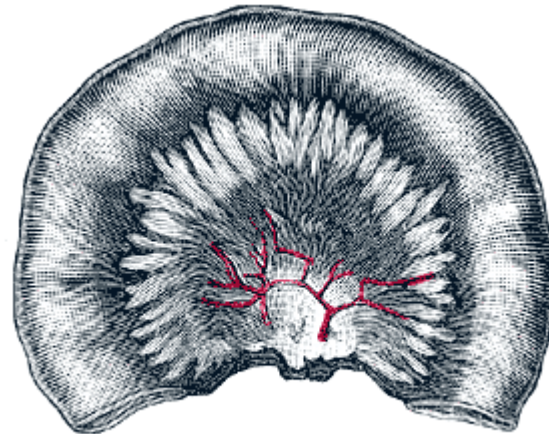
Six feet.



Nine feet.



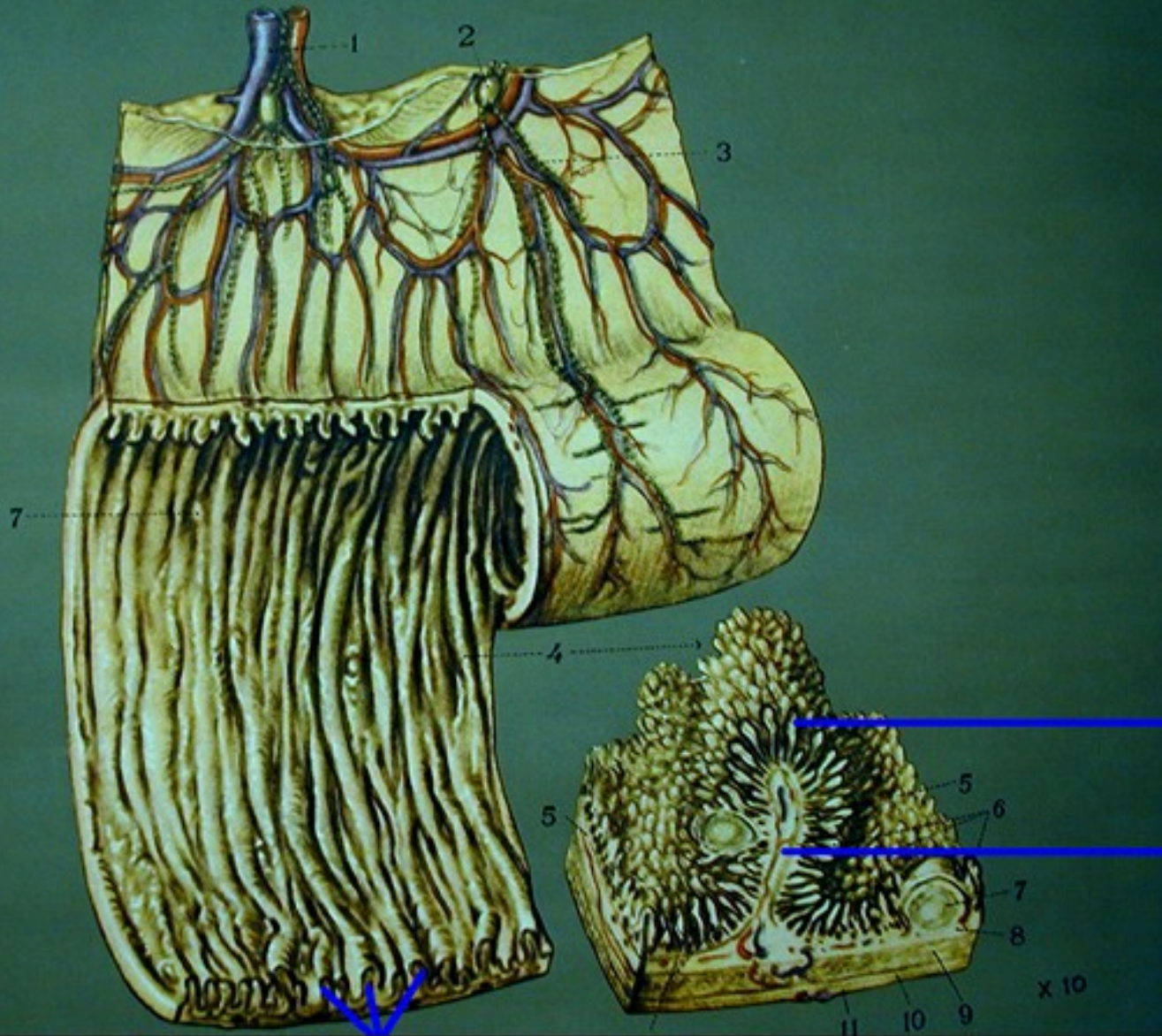
Twelve feet.



Twenty feet.

1065-1070





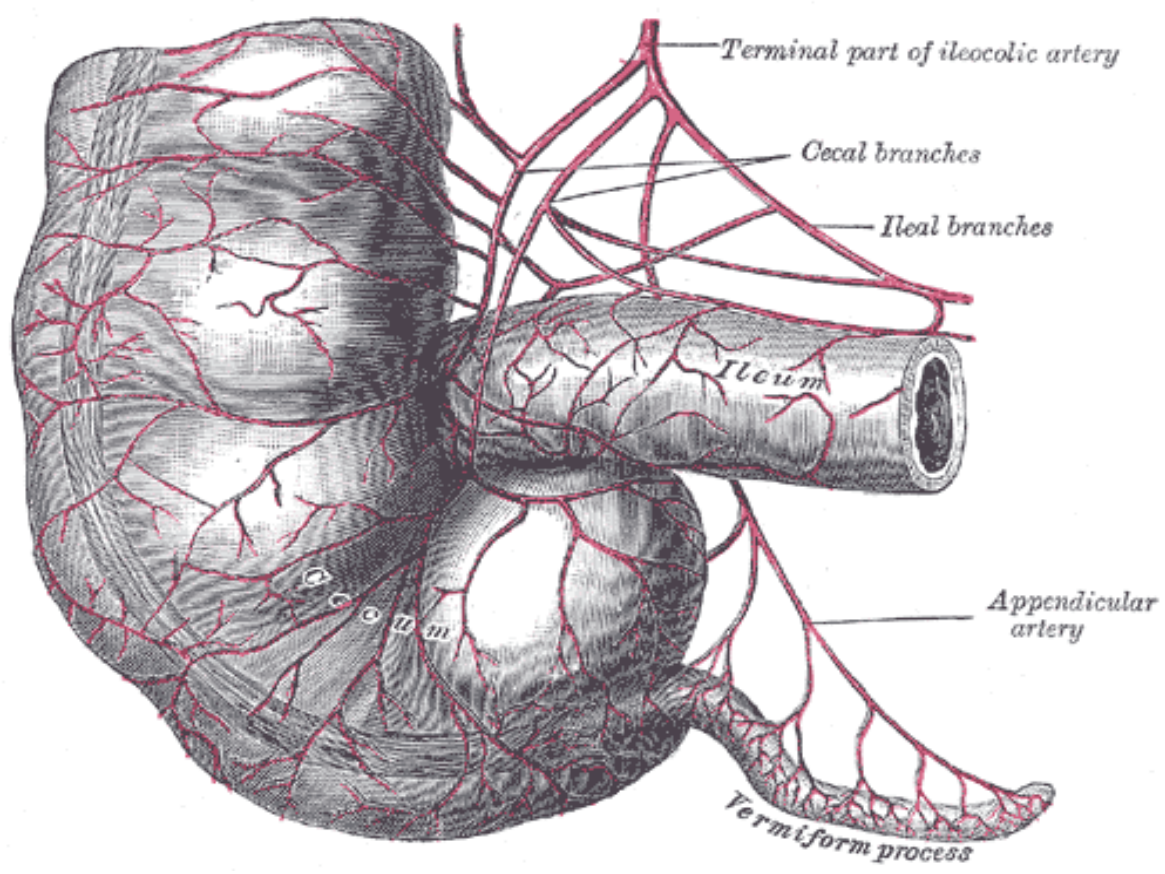
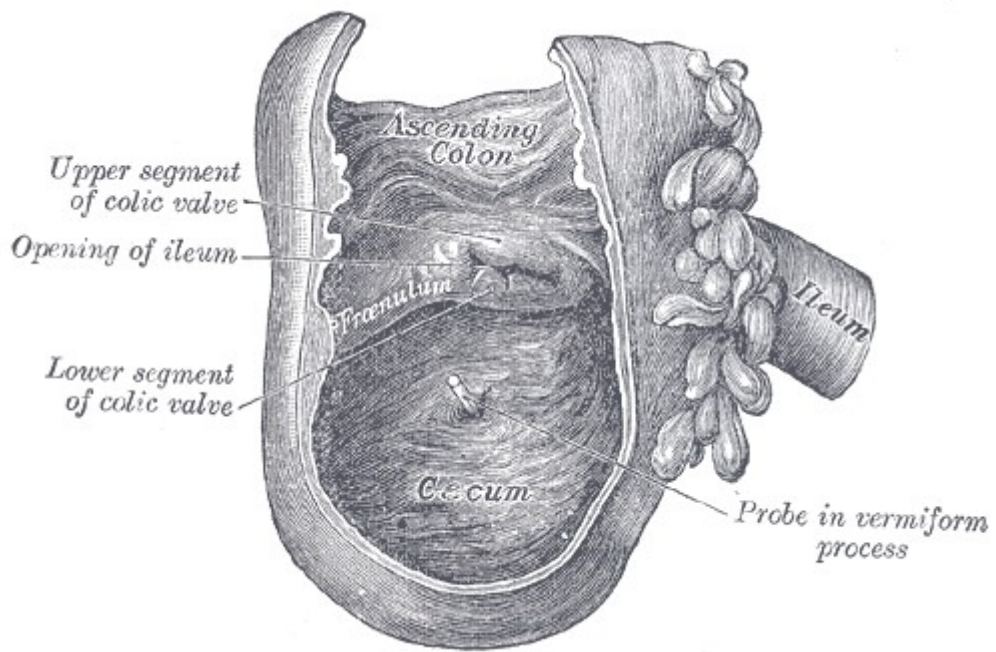
Villus

Circular Fold

Circular Folds

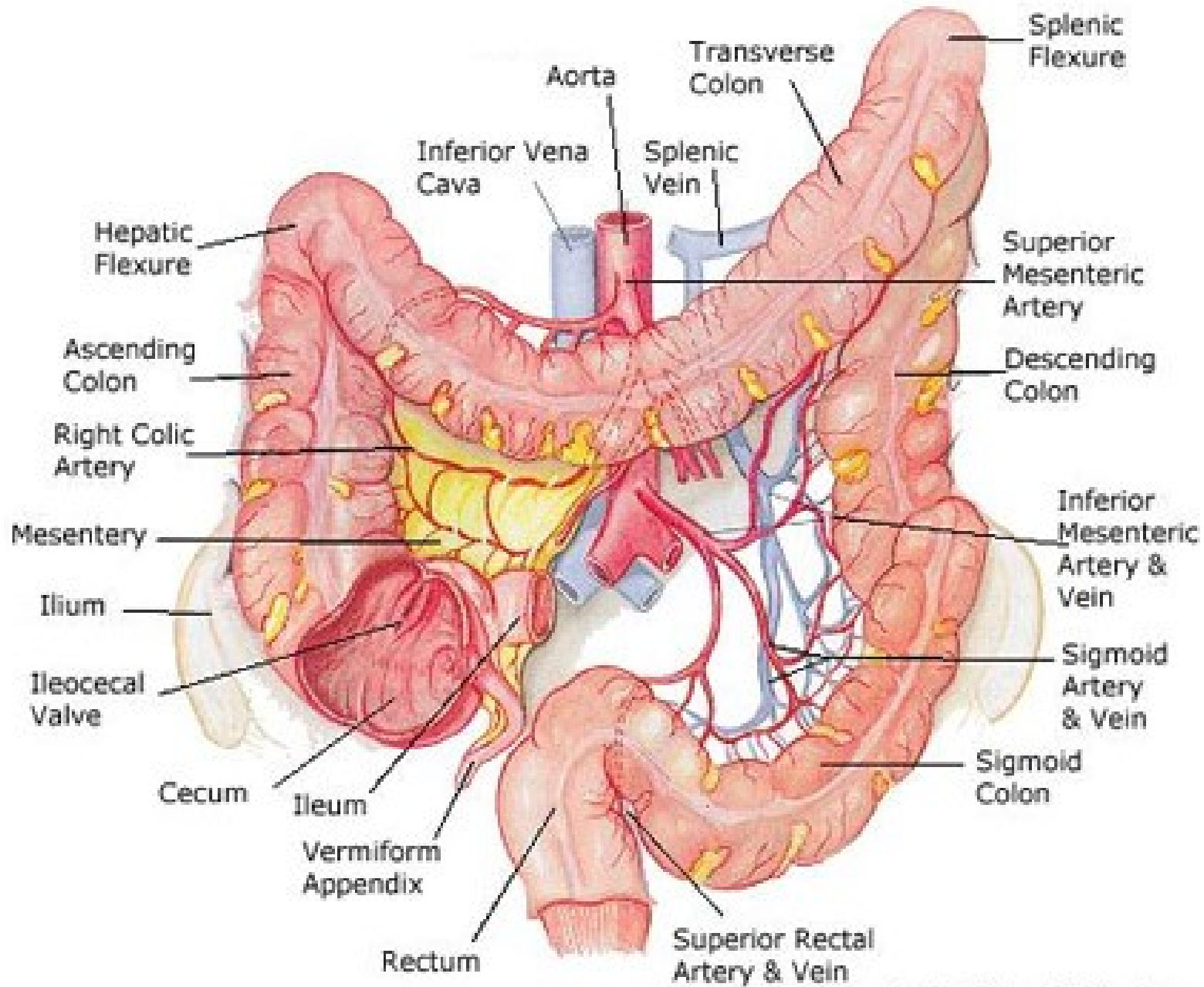
[http://kcfac.kilgore.cc.tx.us/kcap2/digestive chart small intestine structures sized.jpg](http://kcfac.kilgore.cc.tx.us/kcap2/digestive%20chart%20small%20intestine%20structures%20sized.jpg)





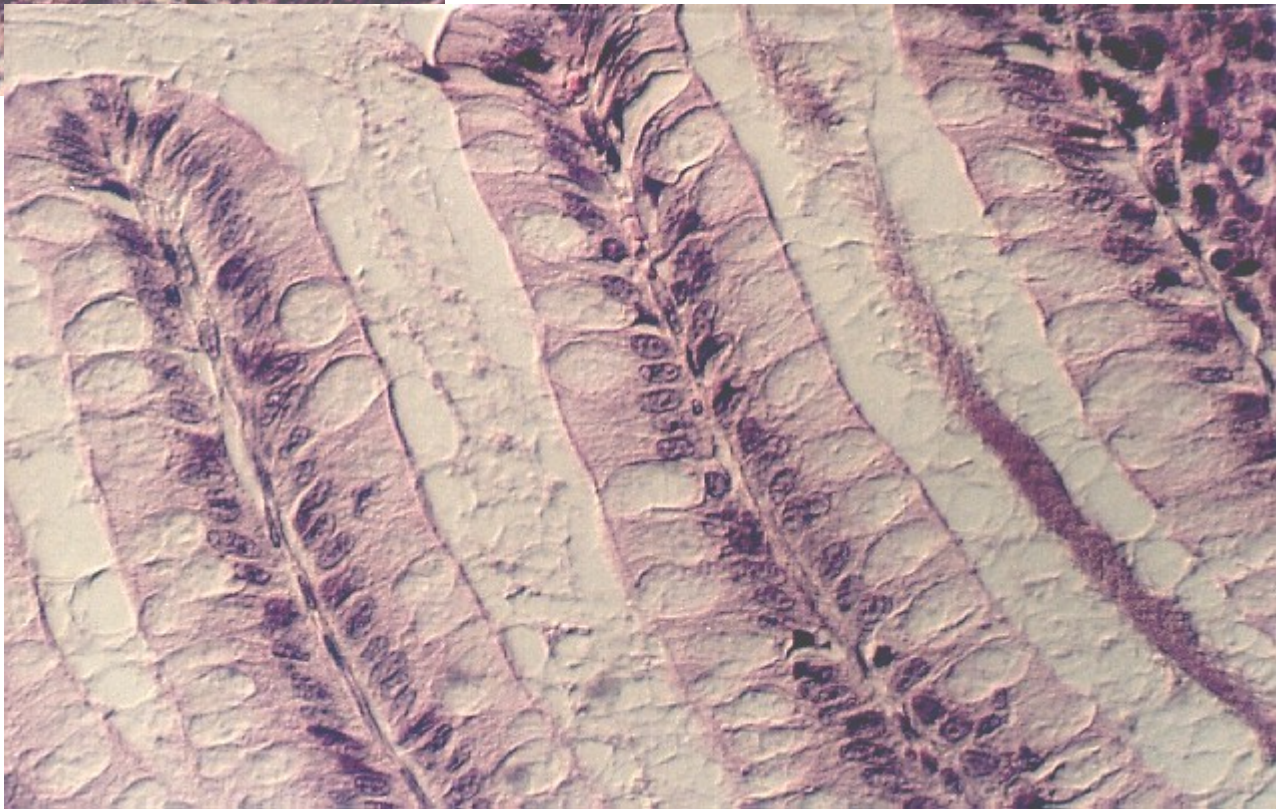
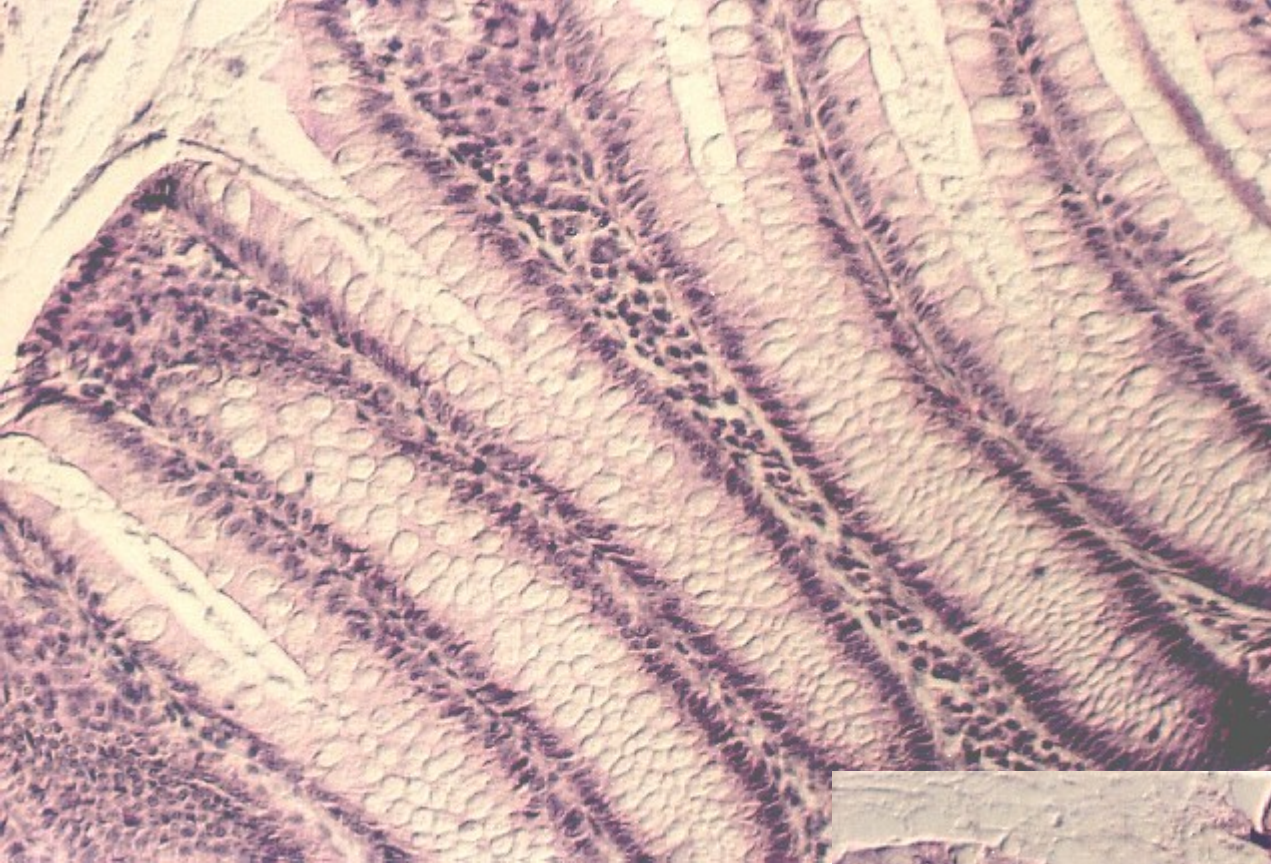
1073, 1075





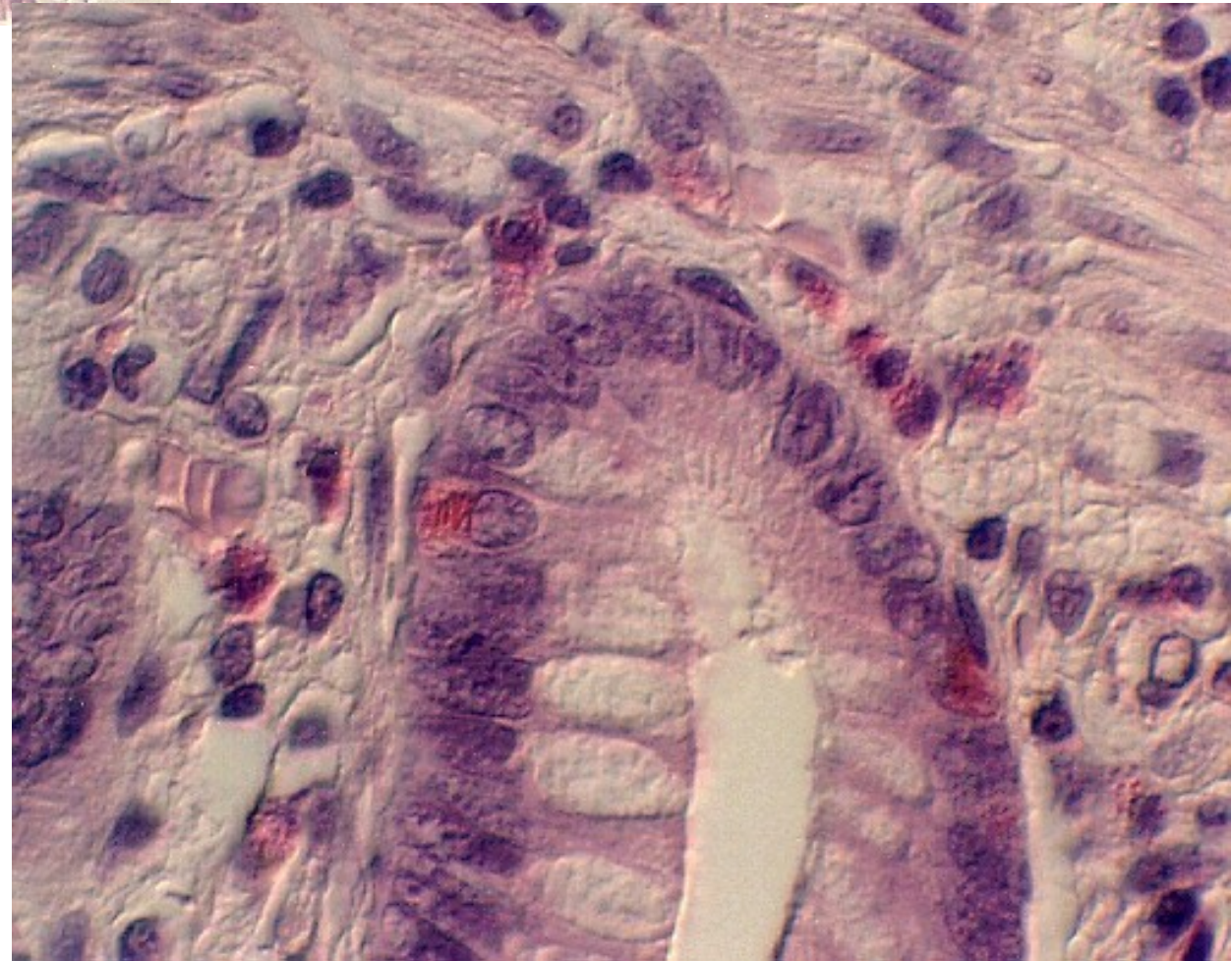
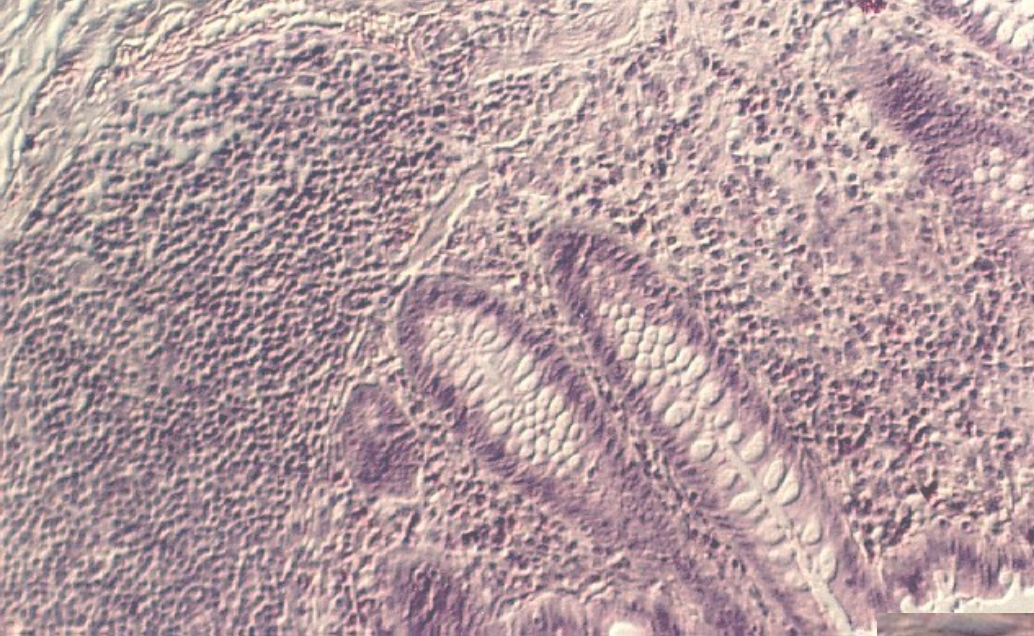
adapted from Thibodeau



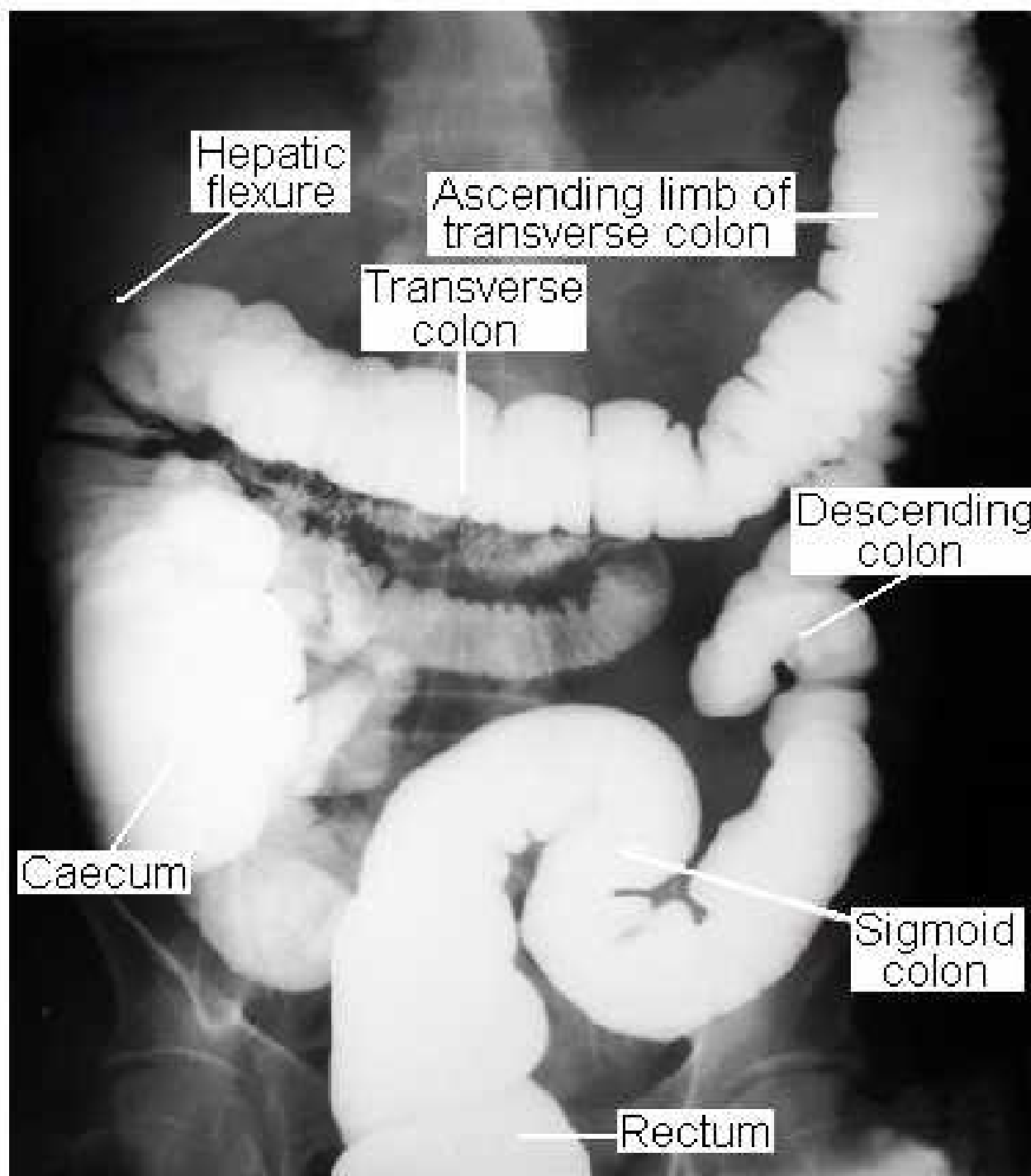


[http://cellbio.utmb.edu/  
microanatomy/digestive/  
Intestine.htm](http://cellbio.utmb.edu/microanatomy/digestive/Intestine.htm)

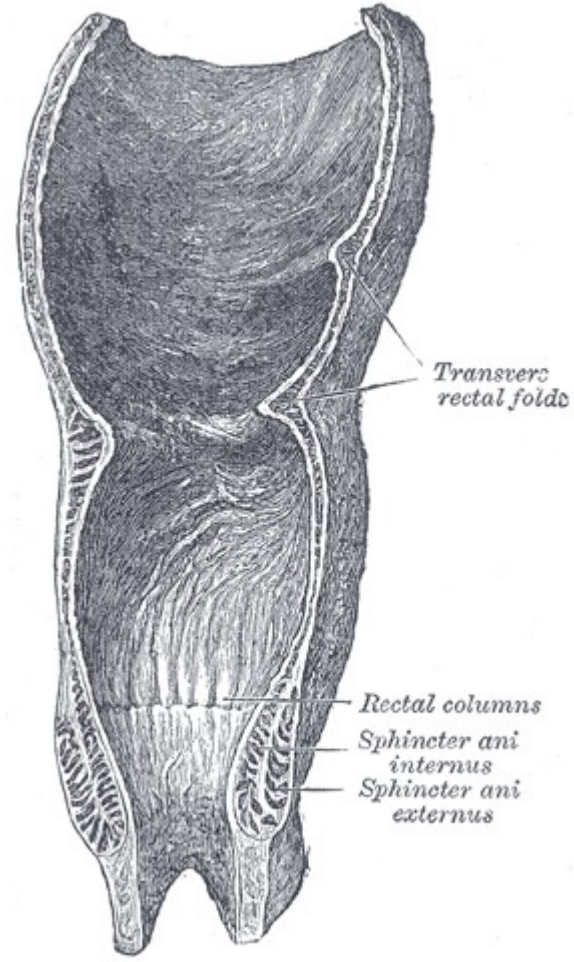
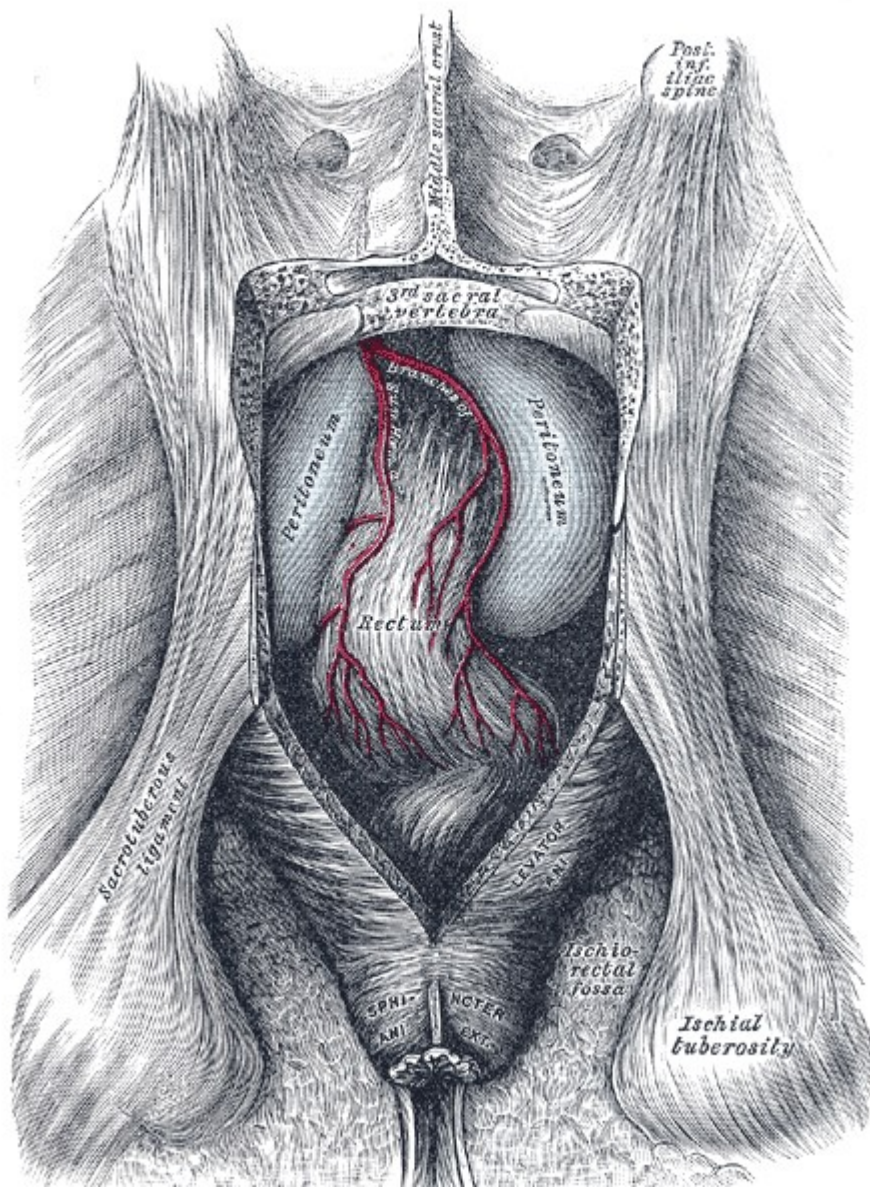




[http://cellbio.utmb.edu/  
microanatomy/digestive/  
Intestine.htm](http://cellbio.utmb.edu/microanatomy/digestive/Intestine.htm)

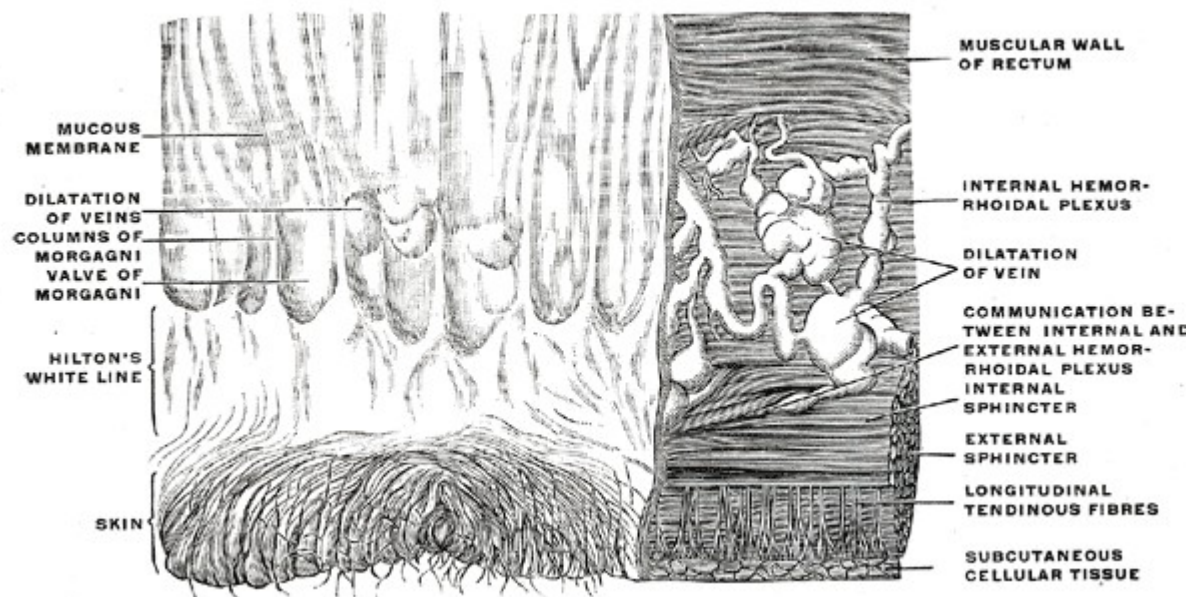
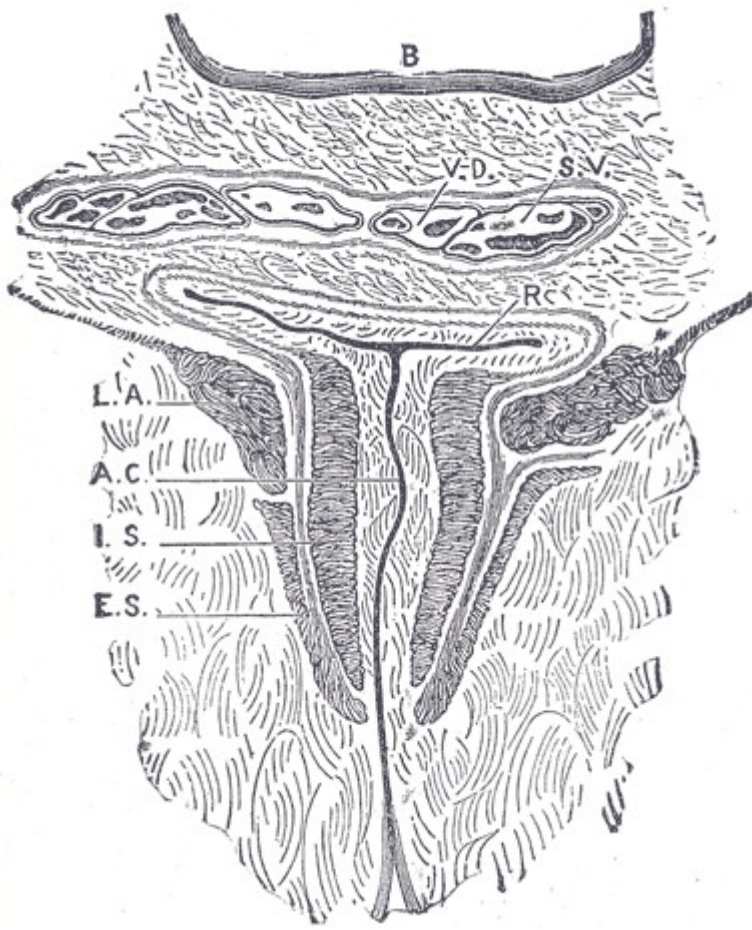
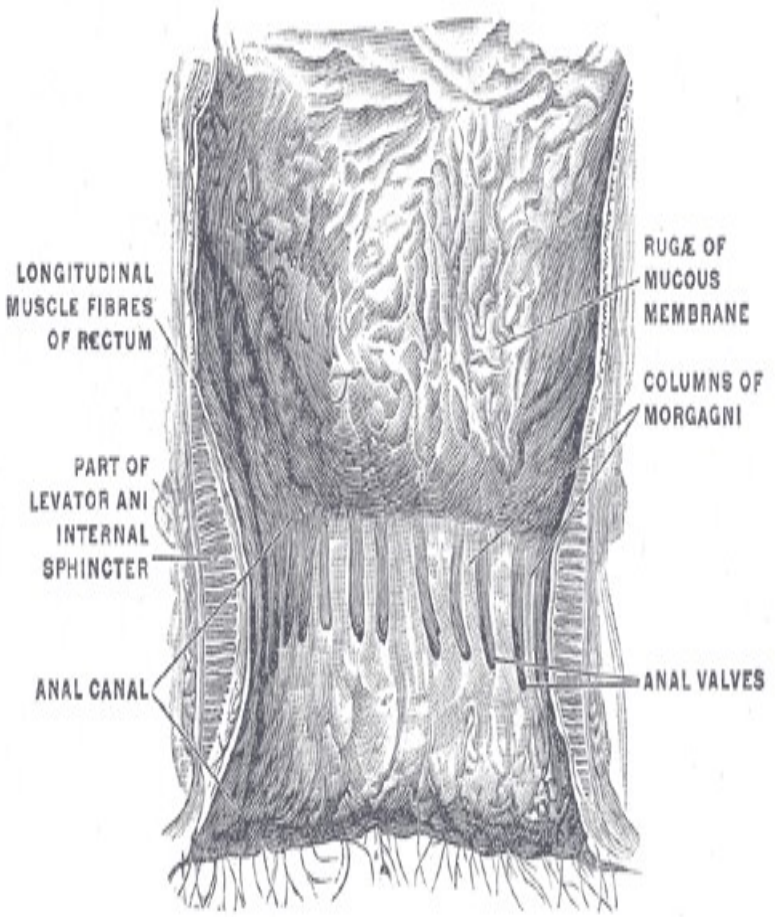






1077, 1078





1079, 1080, 1081



