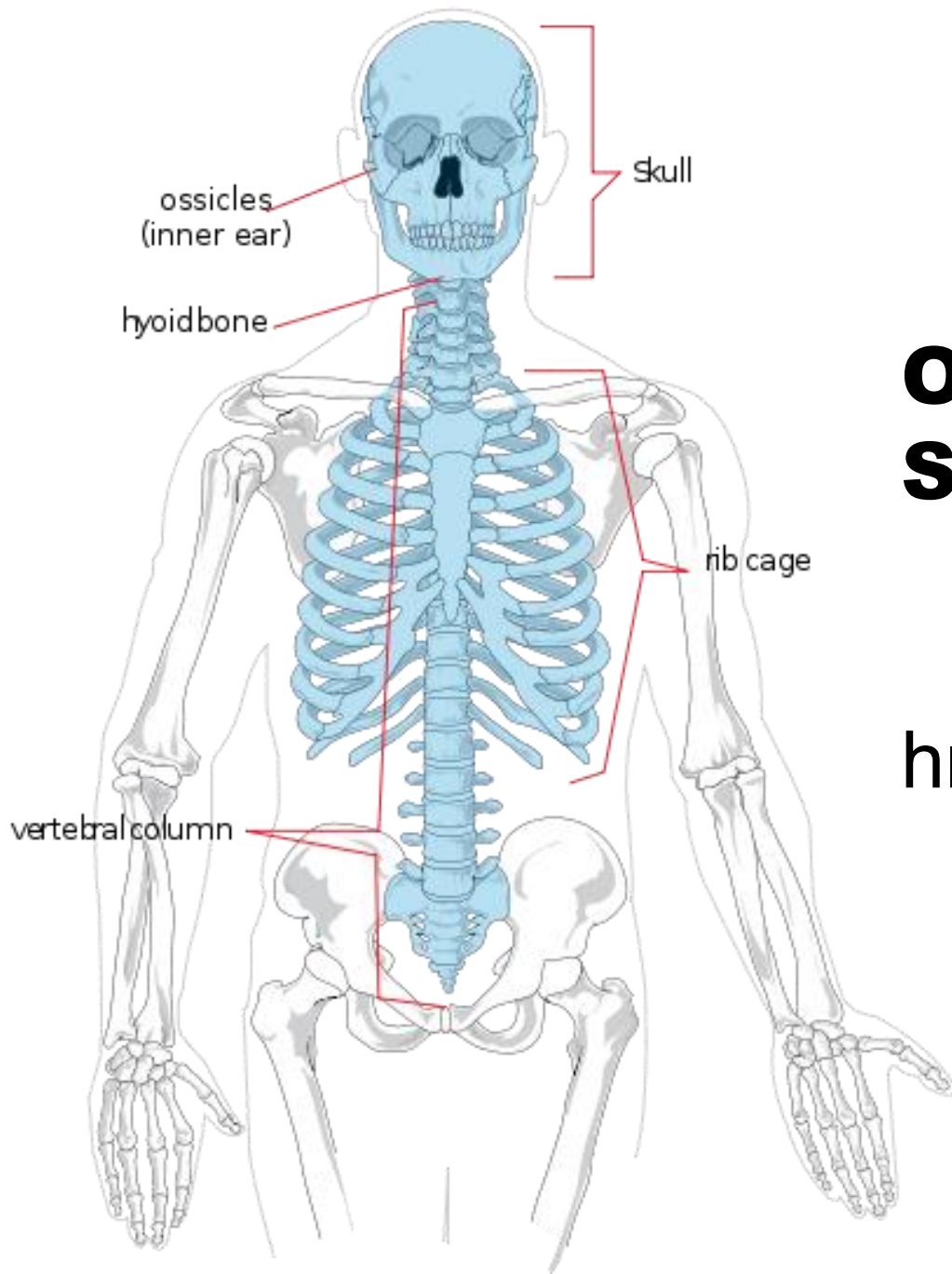


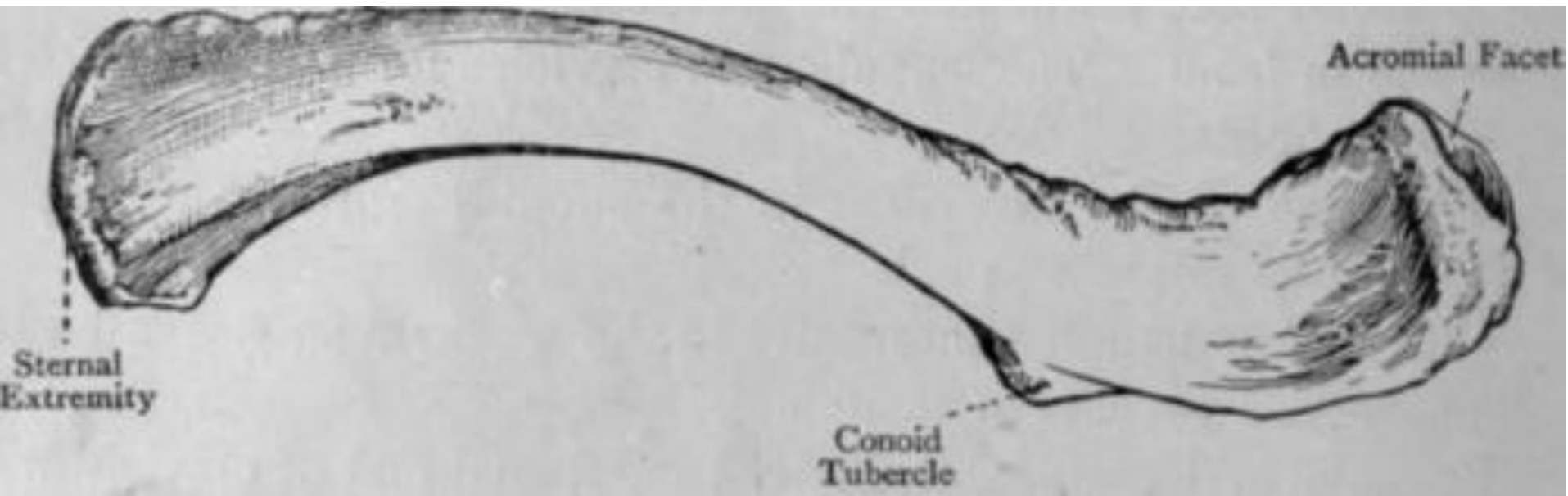


KOSTRA HRUDNÍKU



# OSOVÝ SKELET

hrudník



# CLAVÍCULA



ANTERIOR

EXT

INT

POSTERIOR



# Clavícula



**Vista Superior**

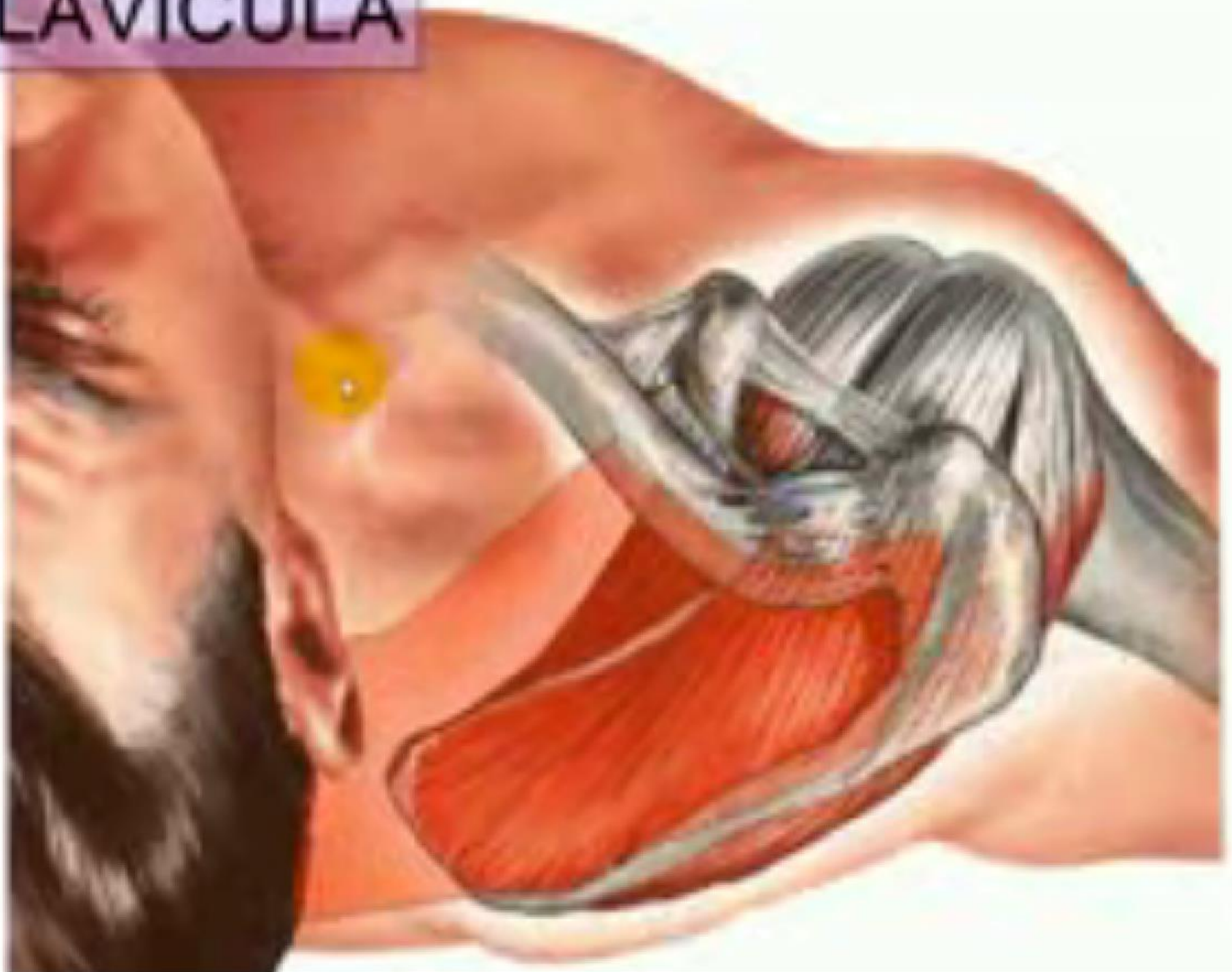


**Vista Inferior**

# CLAVÍCULA



# CLAVÍCULA



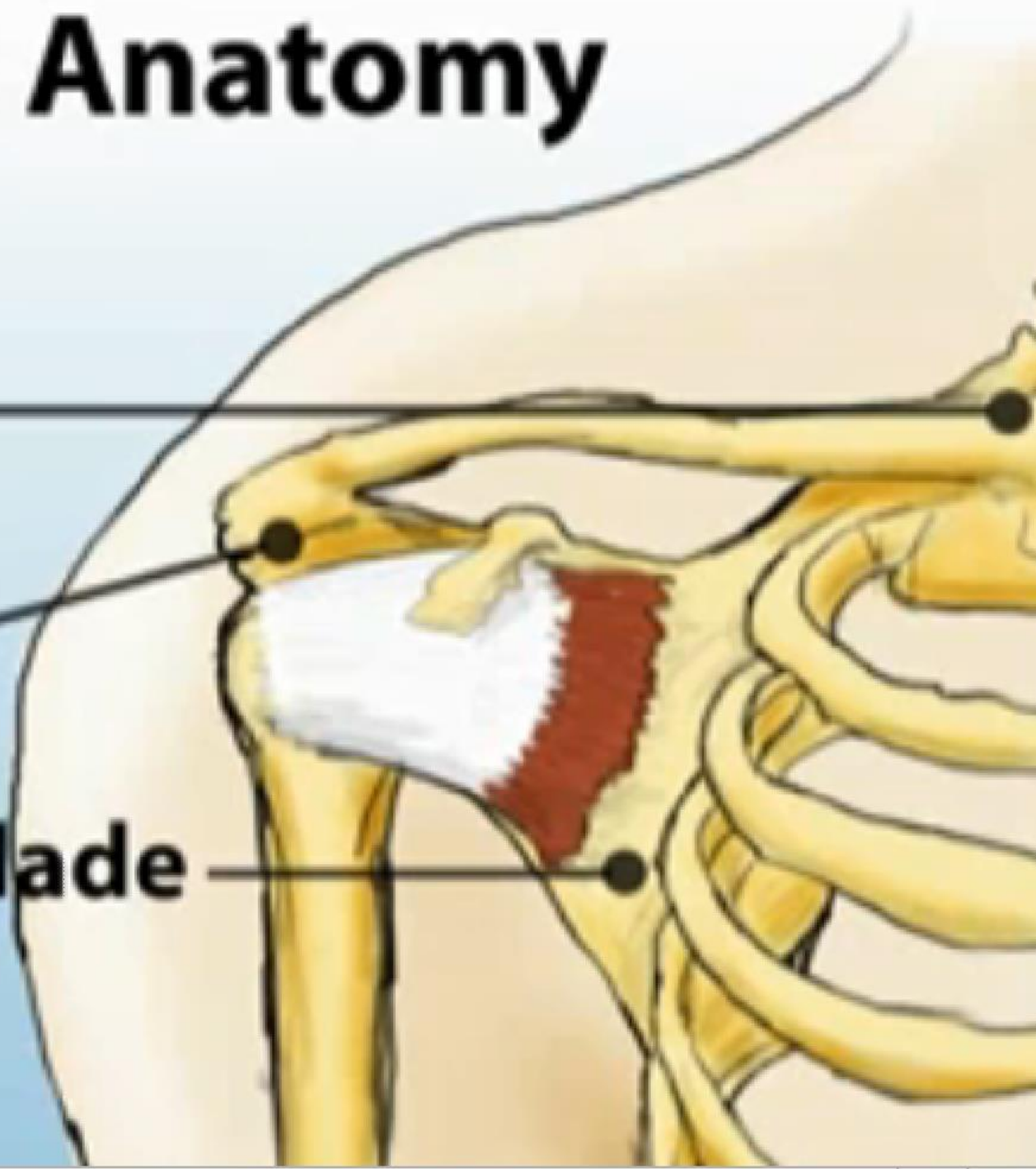


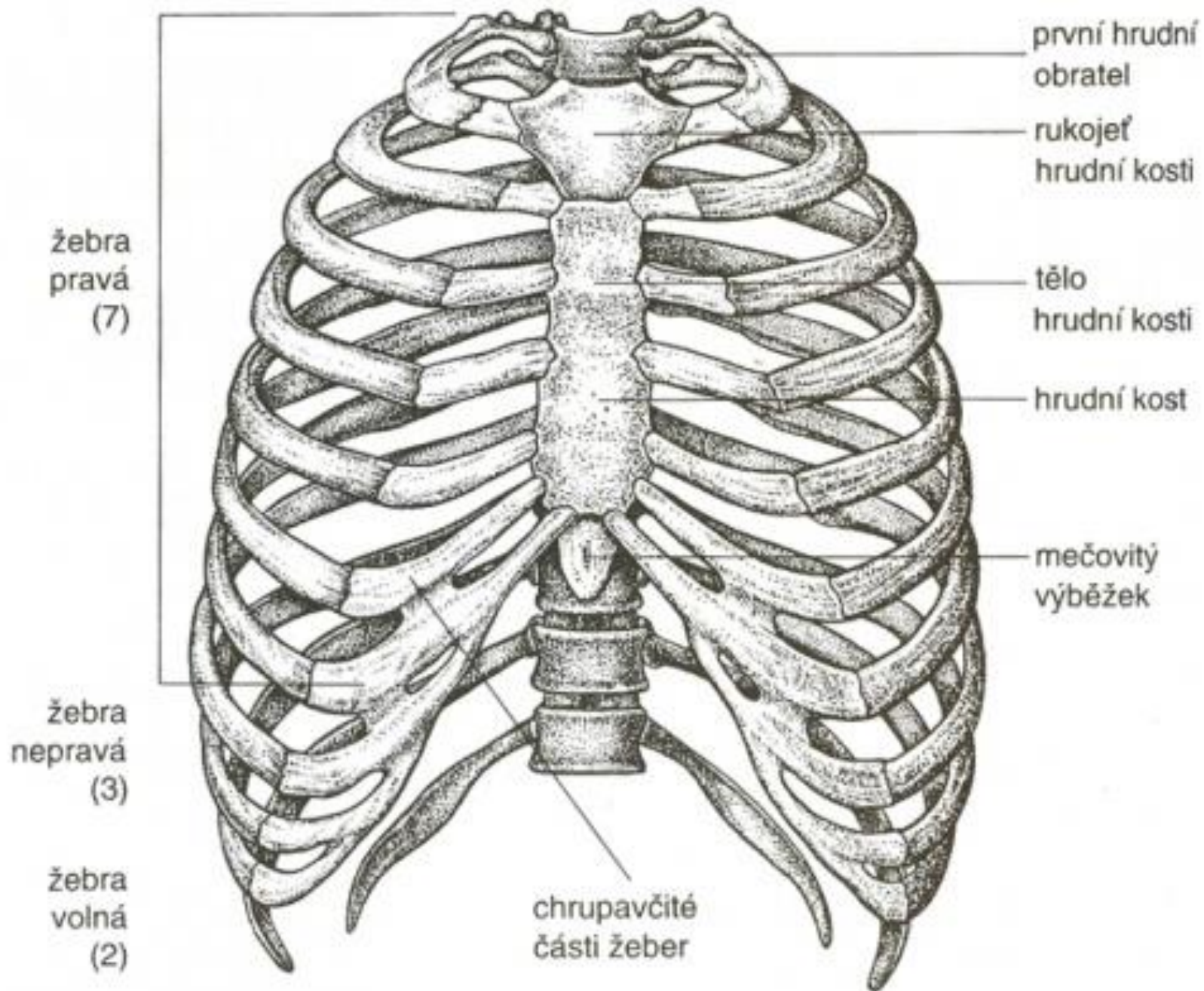
# Clavicle Anatomy

**Clavicle**

**Acromion**

**Shoulder Blade**



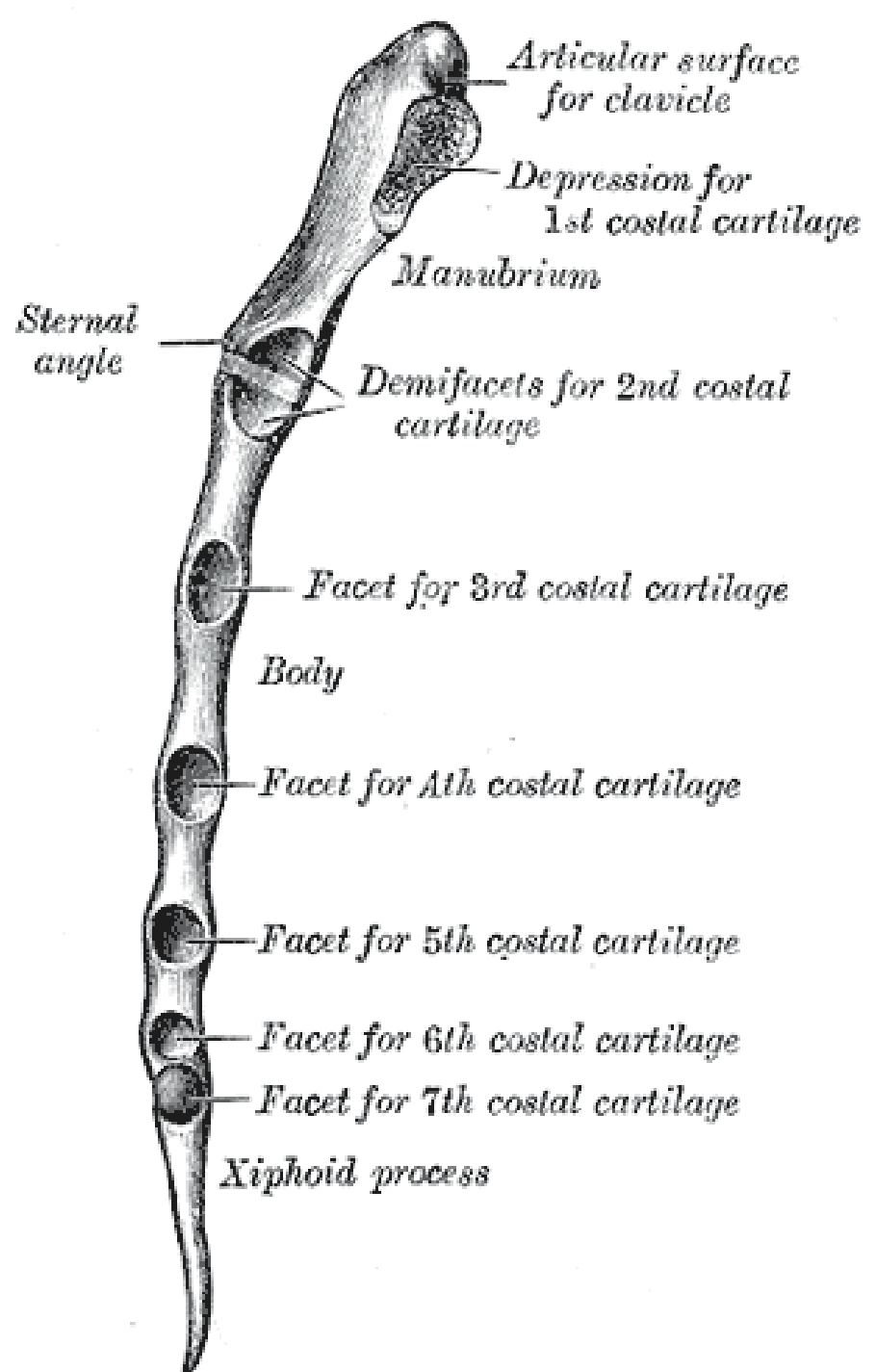
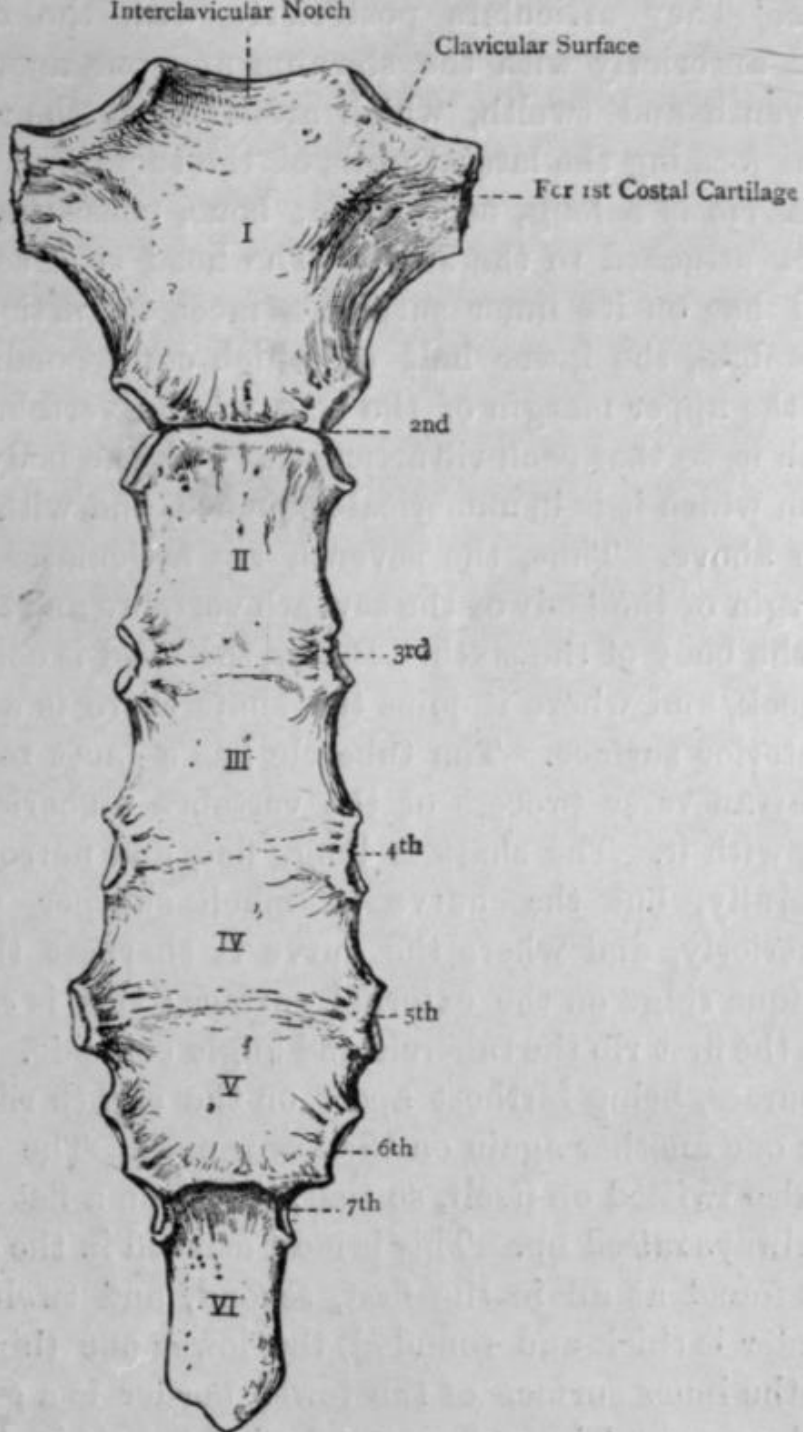


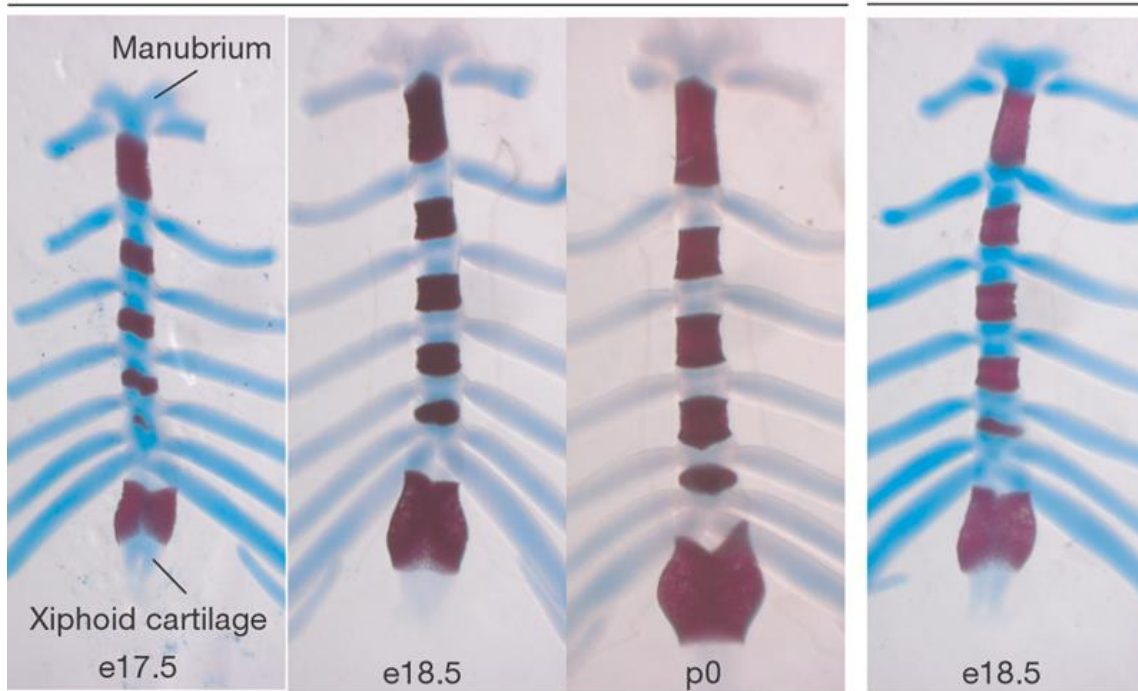


1-1; 1-2)  
apertura thoracis  
superior et inferior

2) Arcus costalis

3) Angulus  
infrasternalis



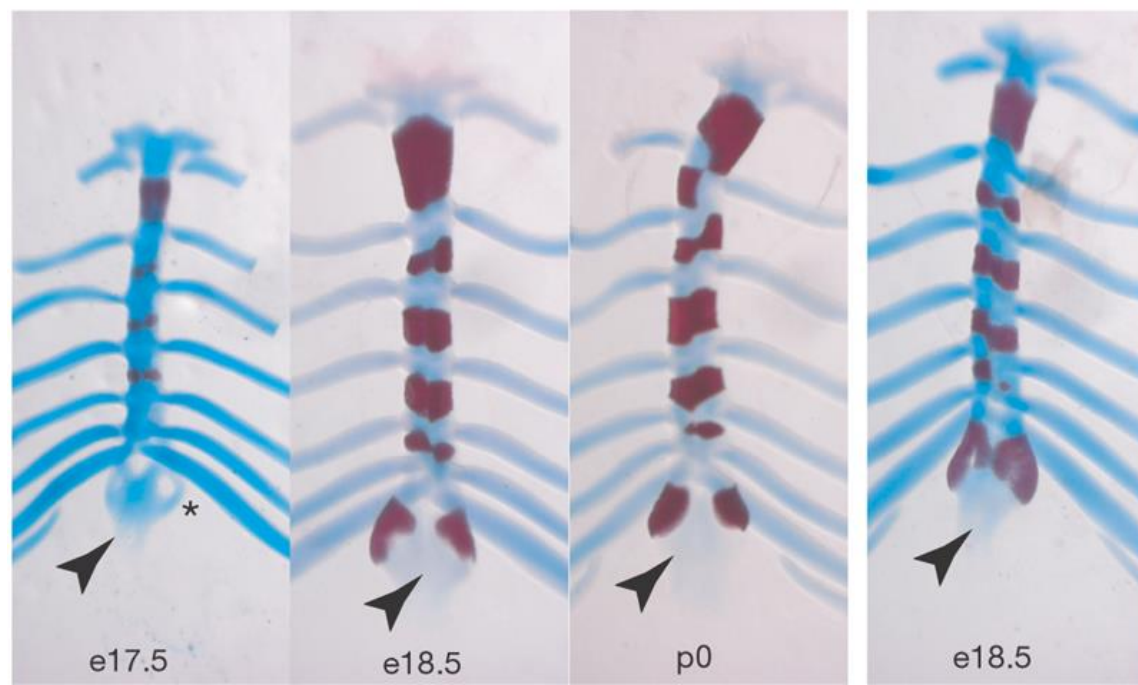


*1d age*

**d** *GSK-3β<sup>-/-</sup>*

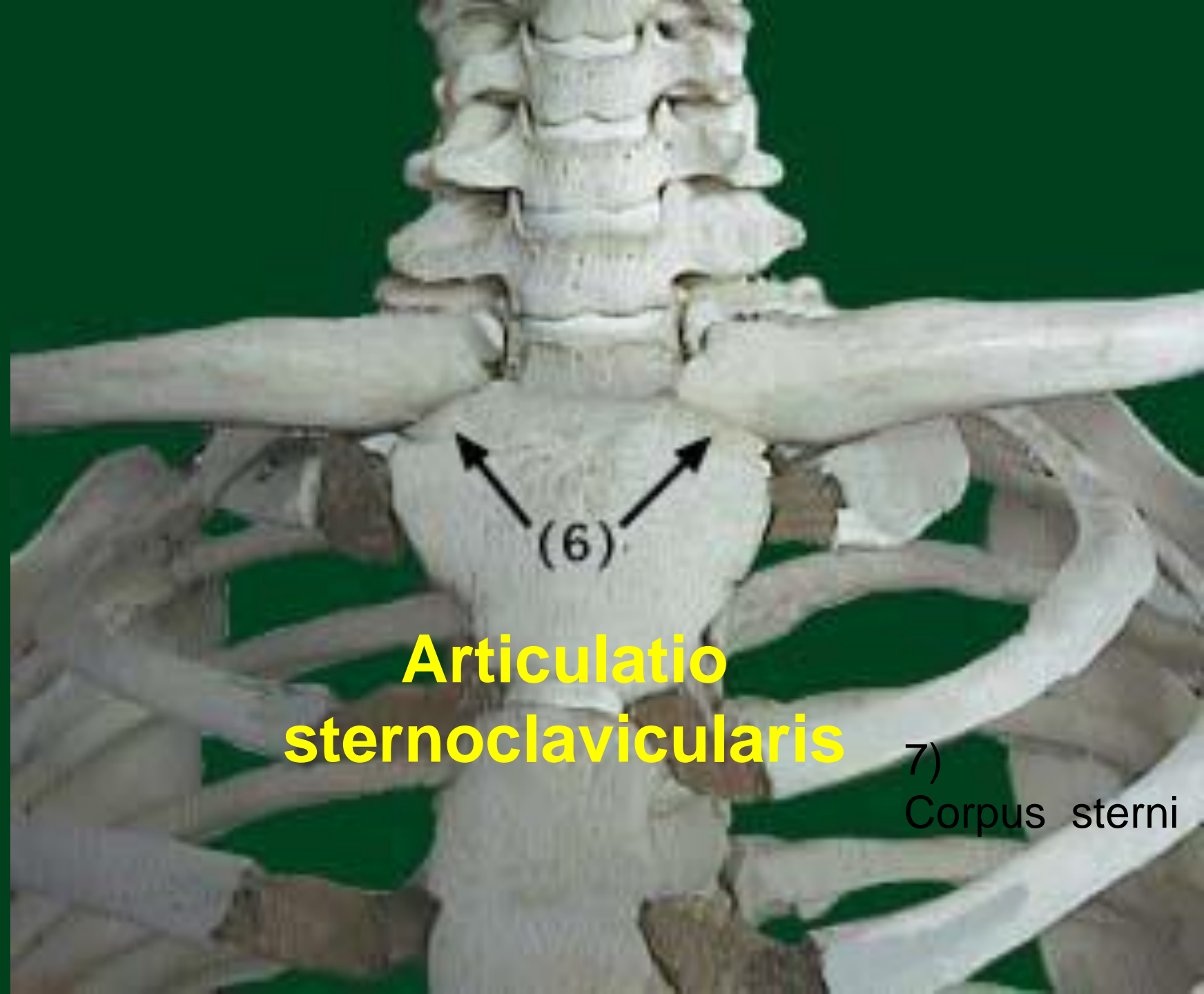
**e** *GSK-3β<sup>F/F</sup>*

*Time  
of  
union*



*25th year*

*advanced life*



(6)

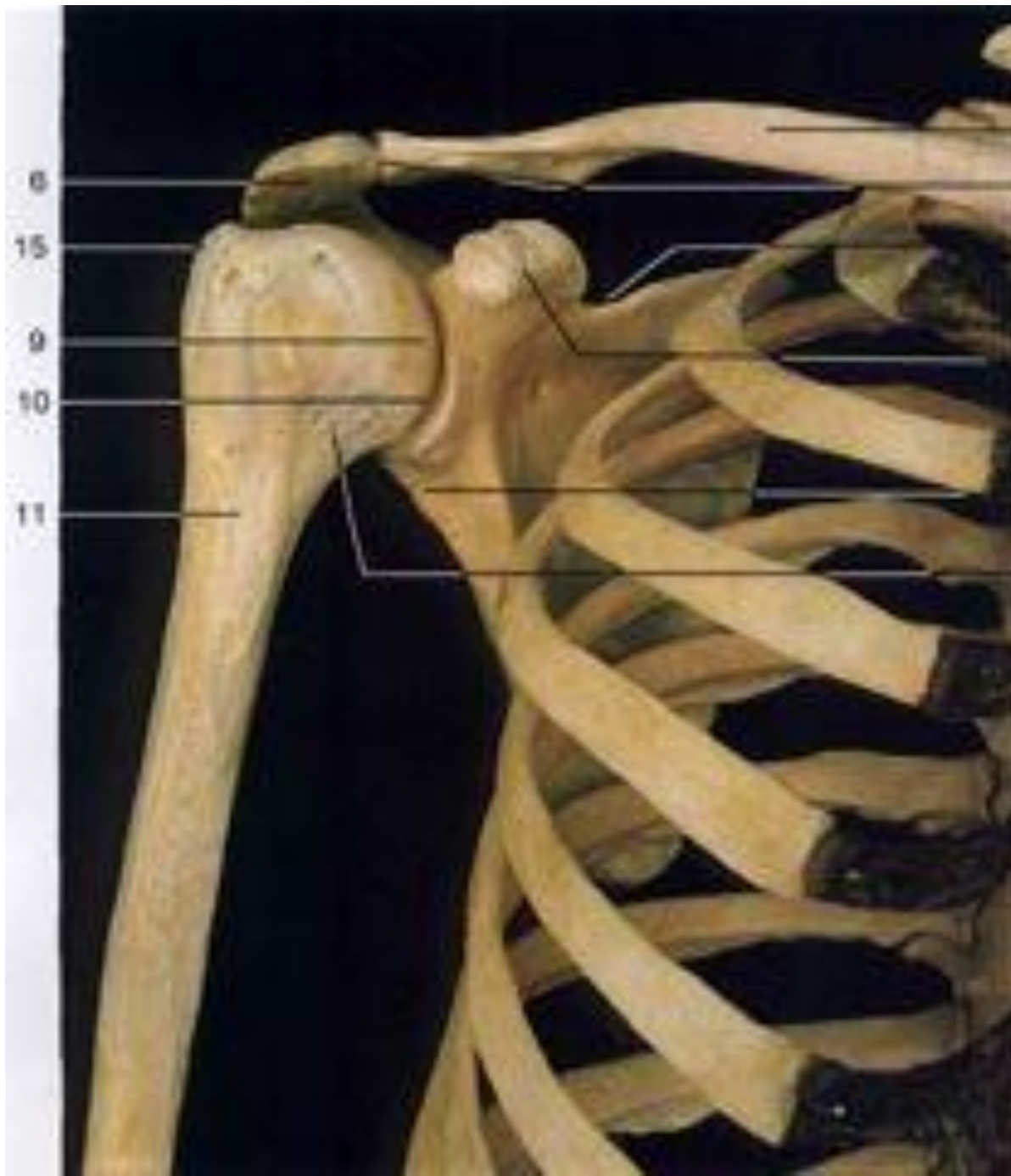
**Articulatio sternoclavicularis**

7)  
Corpus sterni

ni

aris

ni



žebro

klouby mezi žebry a obratly

žebra

klíční kost - clavícula

kloub akromioklavikulární

akromion - nadpažek

incisura scapulae

spina scapulae

caput humeri - hlavice

glenoidální jamka

krček pažní kosti

fossa infraspinata

processus coracoideus

tuberculum infraglenoidale

velký hrbol pažní kosti

collum anatomicum



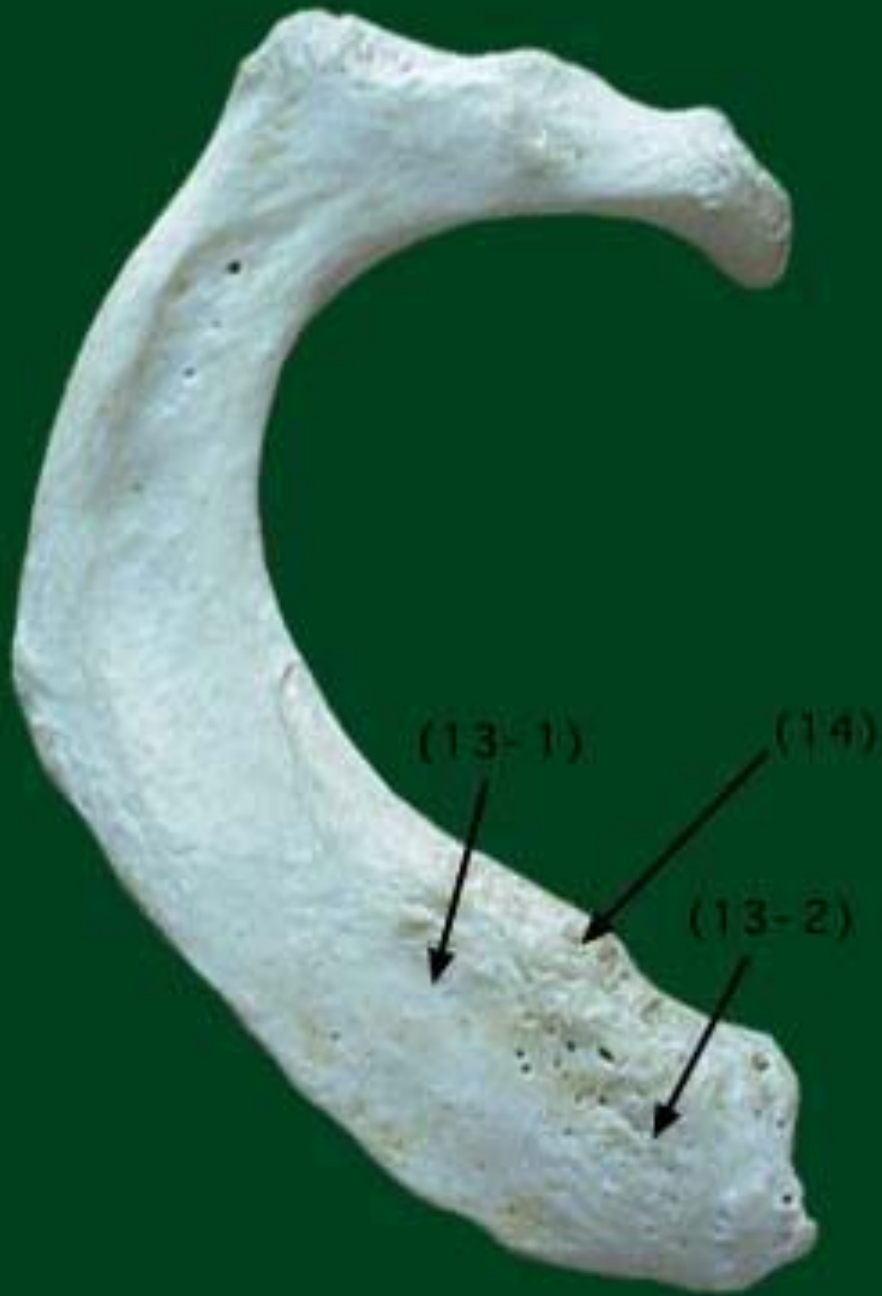
9) Caput costae

10)  
tuberculum costae

11) Angulus costae

12) Sulcus costae





13-1; 13-2)  
Sulcus art. et  
venae  
subclaviae

14)  
tuberculum m.  
scaleni anterioris