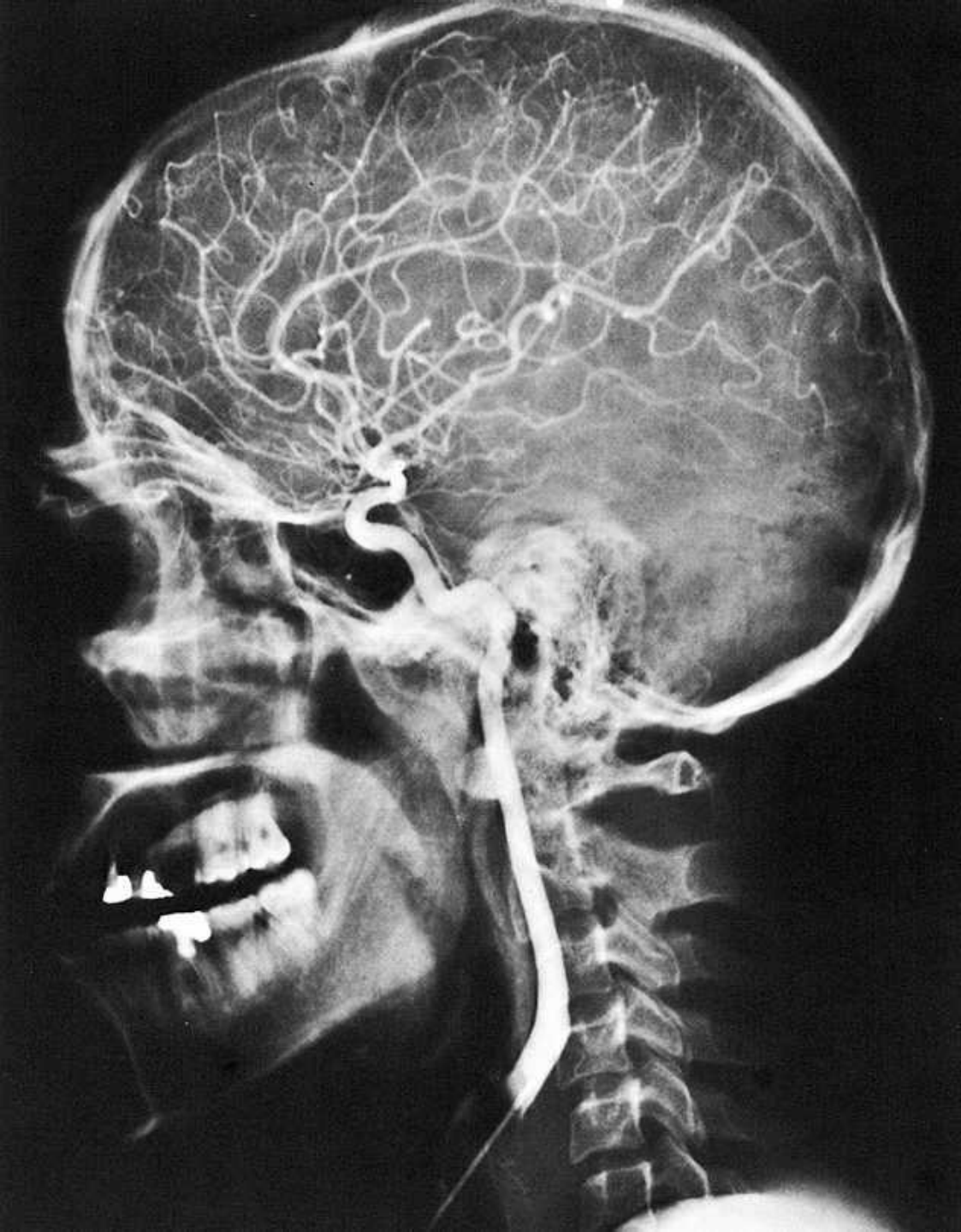




LEBKA

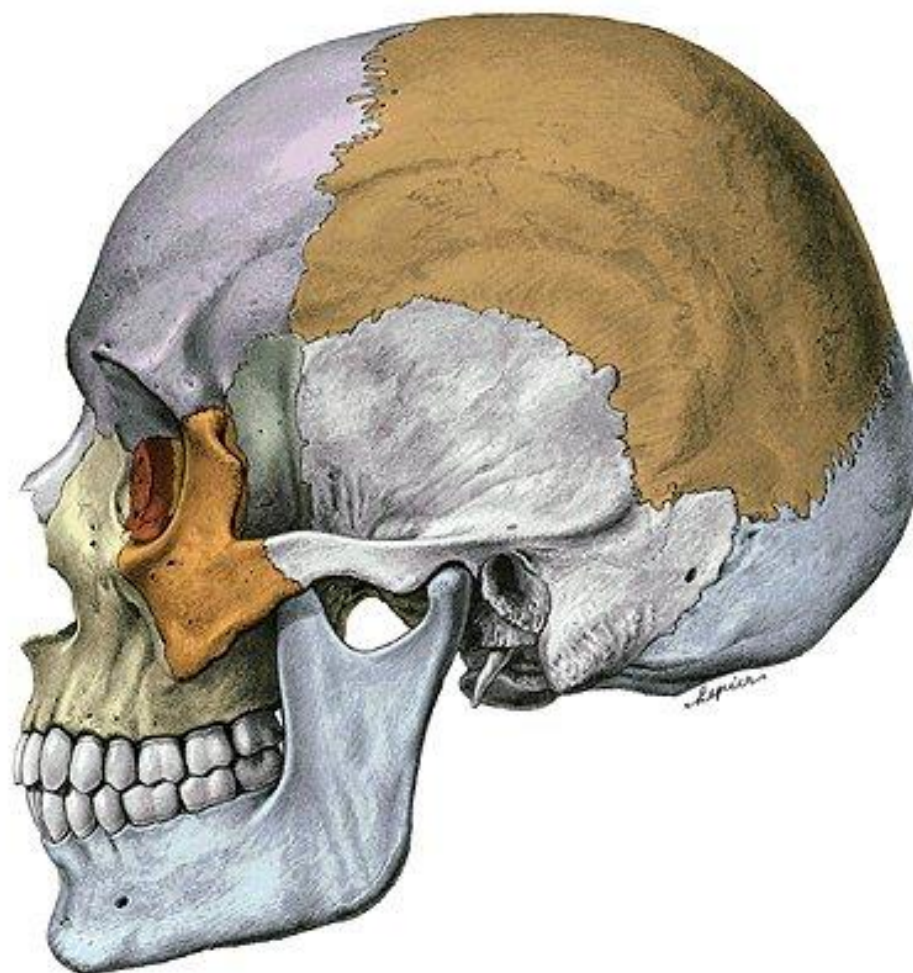


A. Carotis interna

Kostra osová

- **Lebka:**

- Skládá se z mnoha, převážně plochých kostí
- **Kosti spojeny:**
 - Švy: V mládí tvořeny vazivem, ve stáří srůst; „zip“
 - Kloub: Jedině na dolní čelisti
- **Dvě části: Mozková x obličejová**

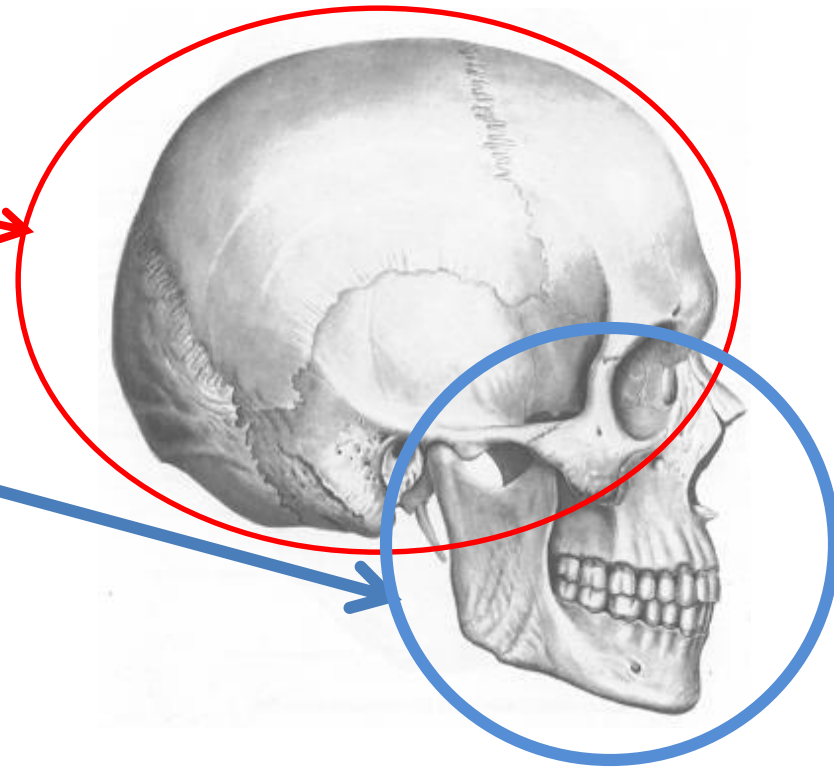
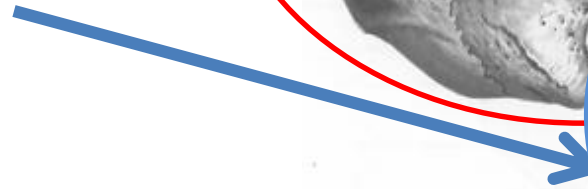


Rozdělení lebky

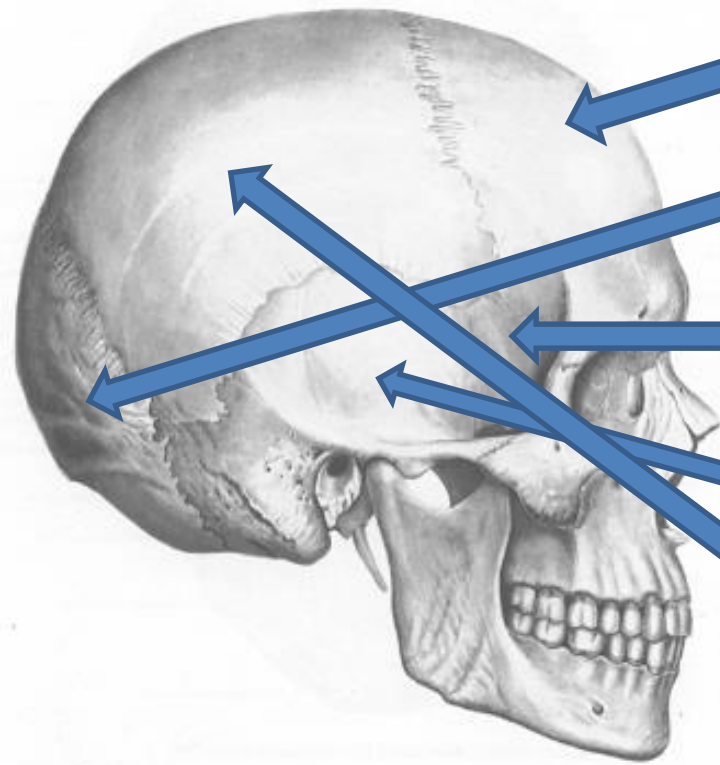
NEUROCRANIUM



SPLANCHNOCRANIUM

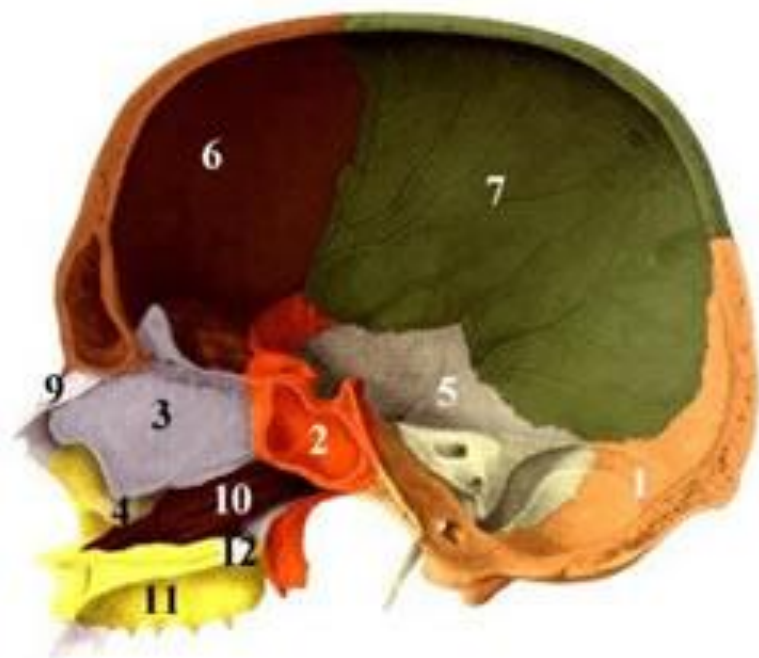
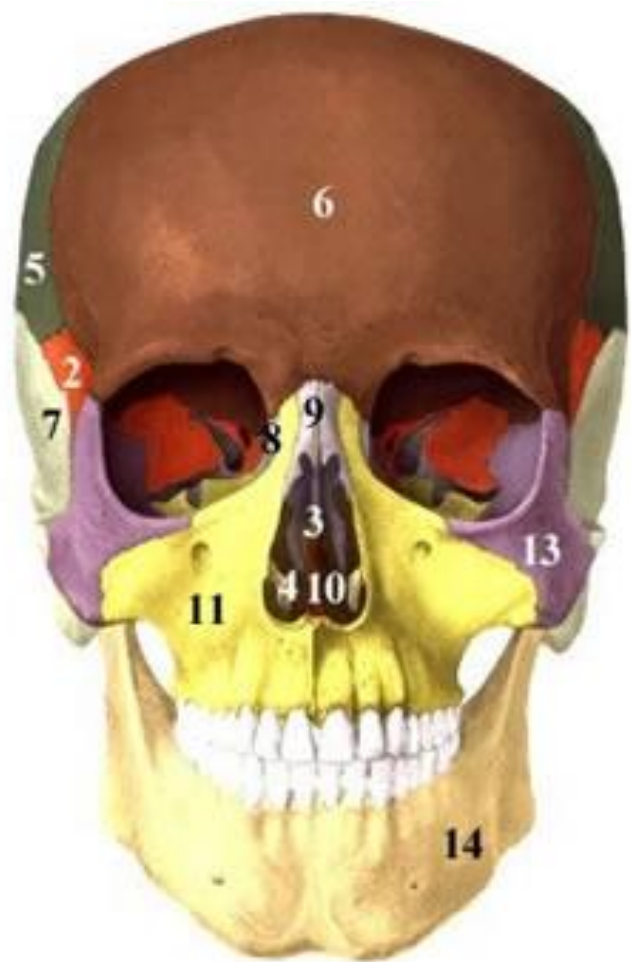


Kosti neurocrania



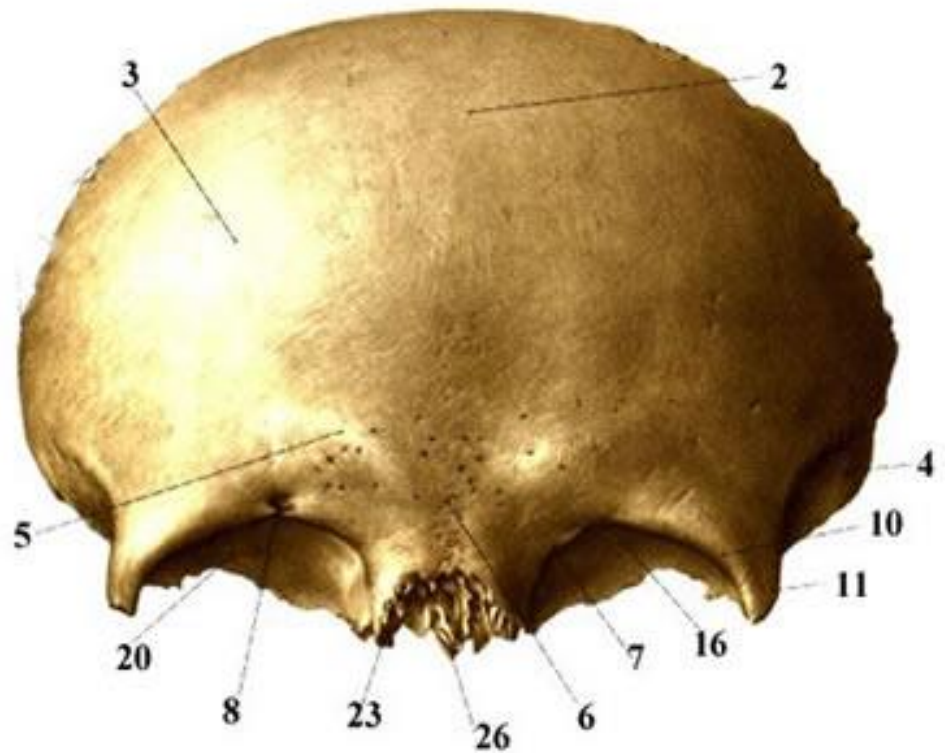
- **Os frontale** (kost čelní)
- **Os occipitale** (kost týlní)
- **Os sphenoidale** (kost klínová)
- **Os temporale** (kost spánková)
- **Os parietale** (temenní kost)
- **Os ethmoidale** ! (kost čichová)

Os frontale



Os frontale

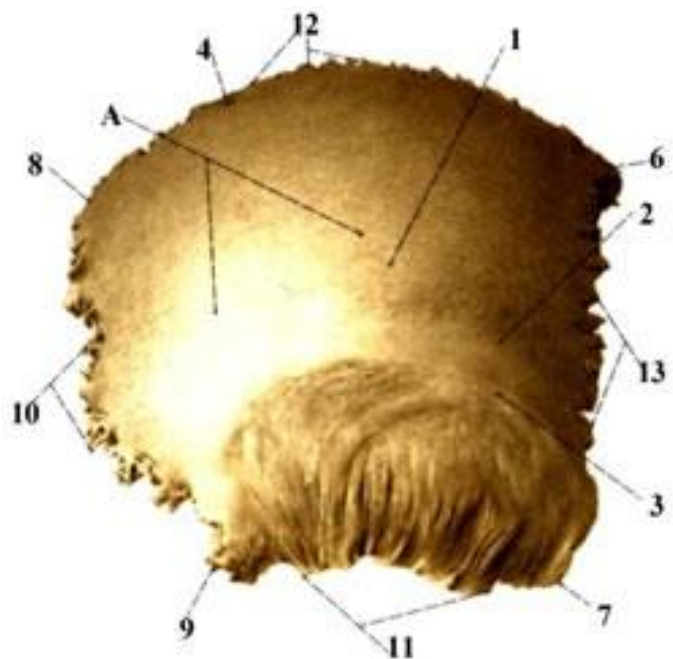
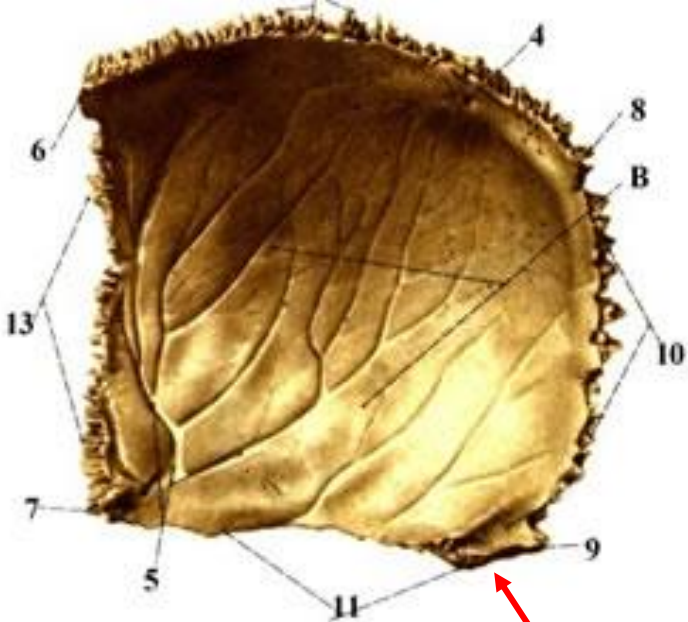
- Partes orbitales
- Fossa glandulae lacrimalis
- Arcus superciliares
- Glabella
- Squama frontalis
- Tubera frontalia
- Sinus frontalis
- Sutura coronalis



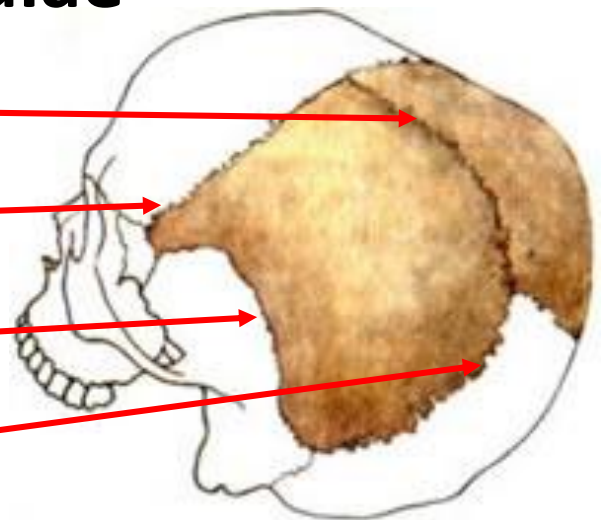
Os frontale



Os parietale

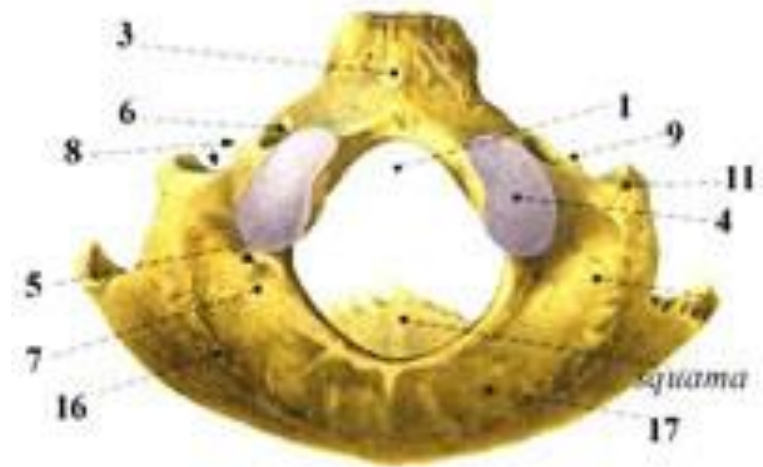
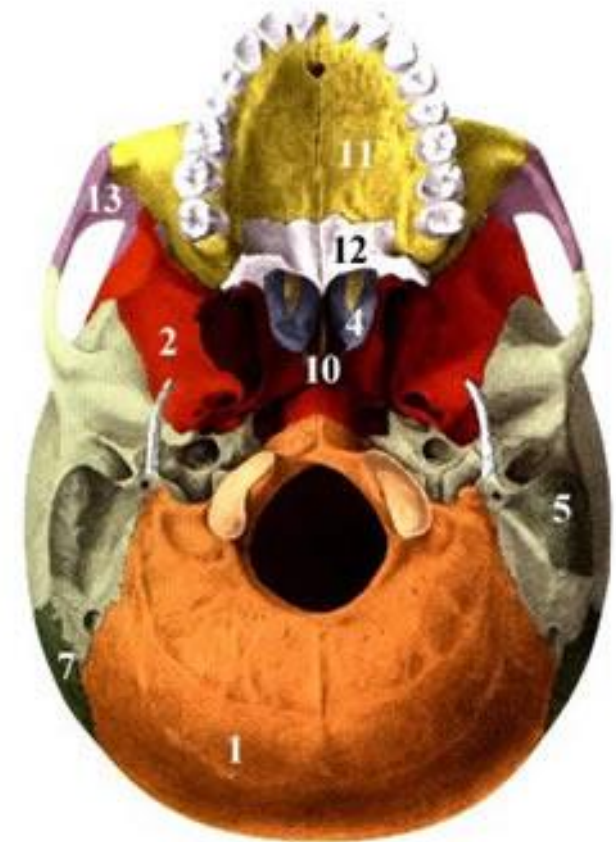


- Sulci arteriae meningiae mediae
- Sutura sagitalis
- Sutura coronalis
- Sutura squamosa
- Sutura lambdoidea



Os occipitale

- Foramen magnum
- Pars basilaris
- Partes laterales
- Condyli occipitales
- Squama occipitalis
- Protuberantia occipitalis externa

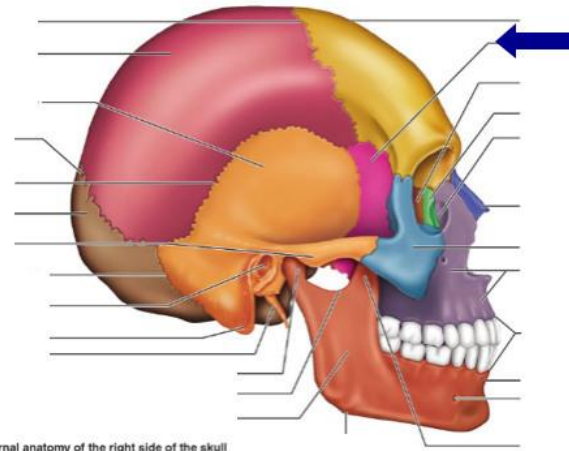


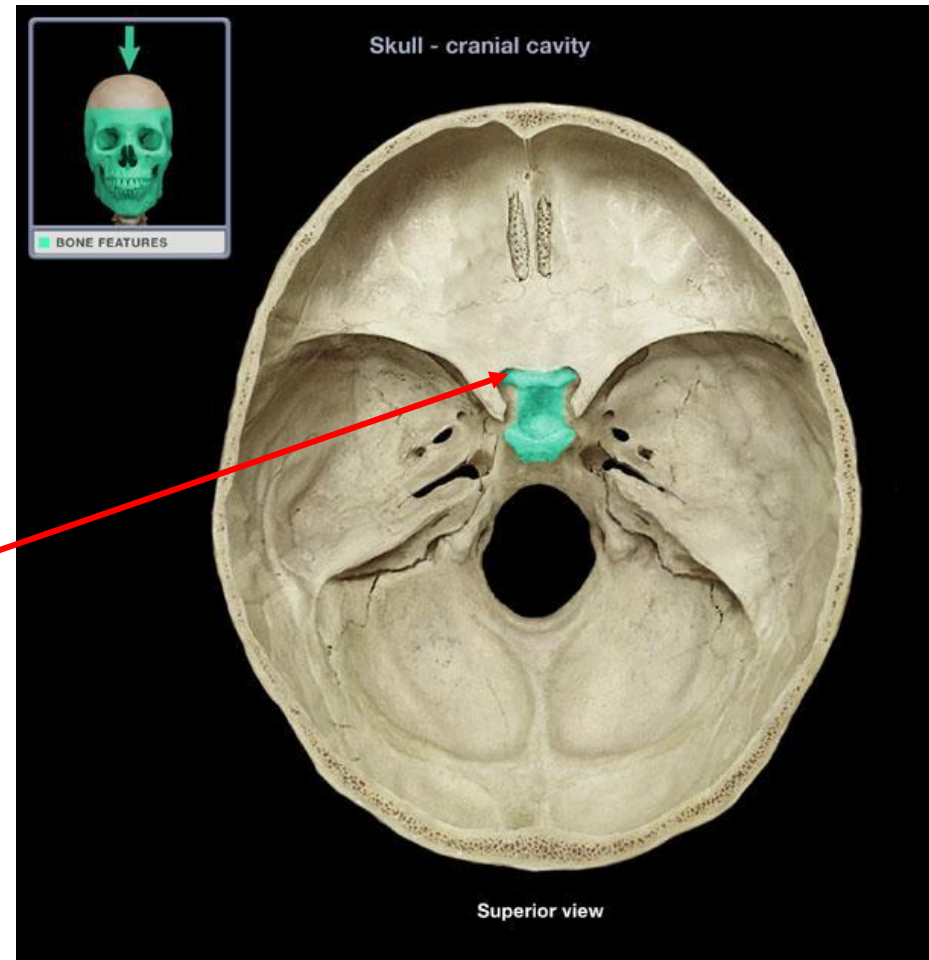
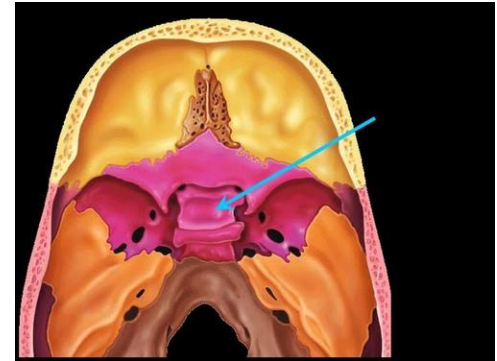
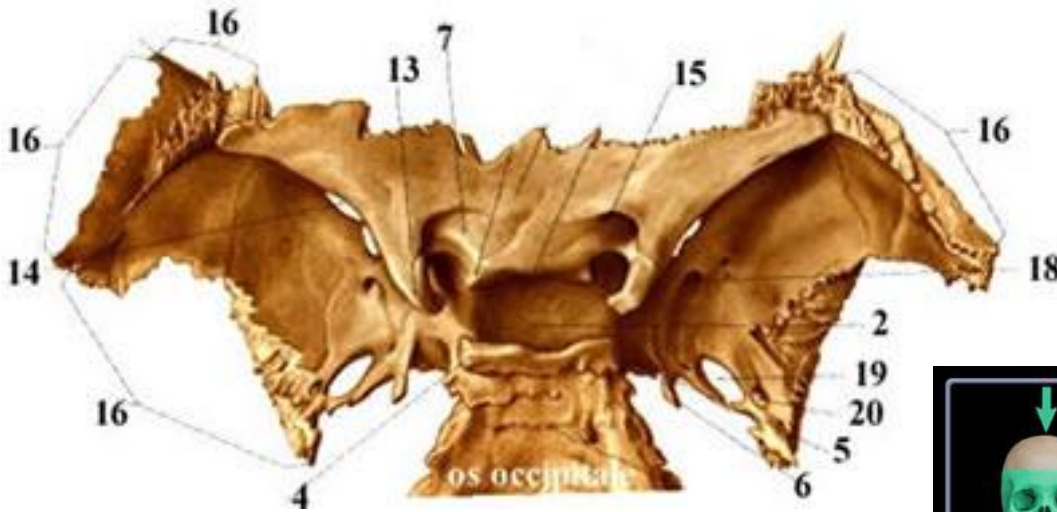
Os sphenoidale



Os sphenoidale

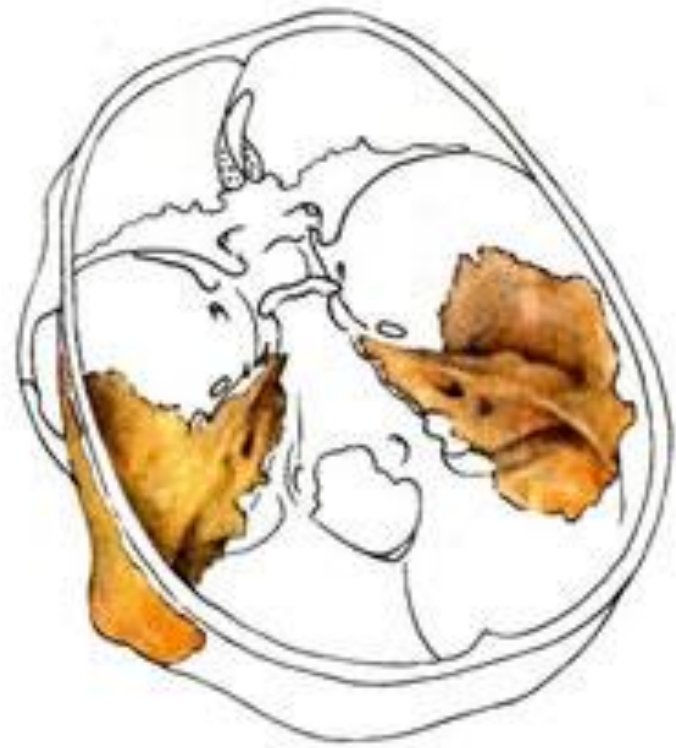
- Corpus ossis sphenoidalis
- Alae majores
- Alae minores
- Processus pterygoidei





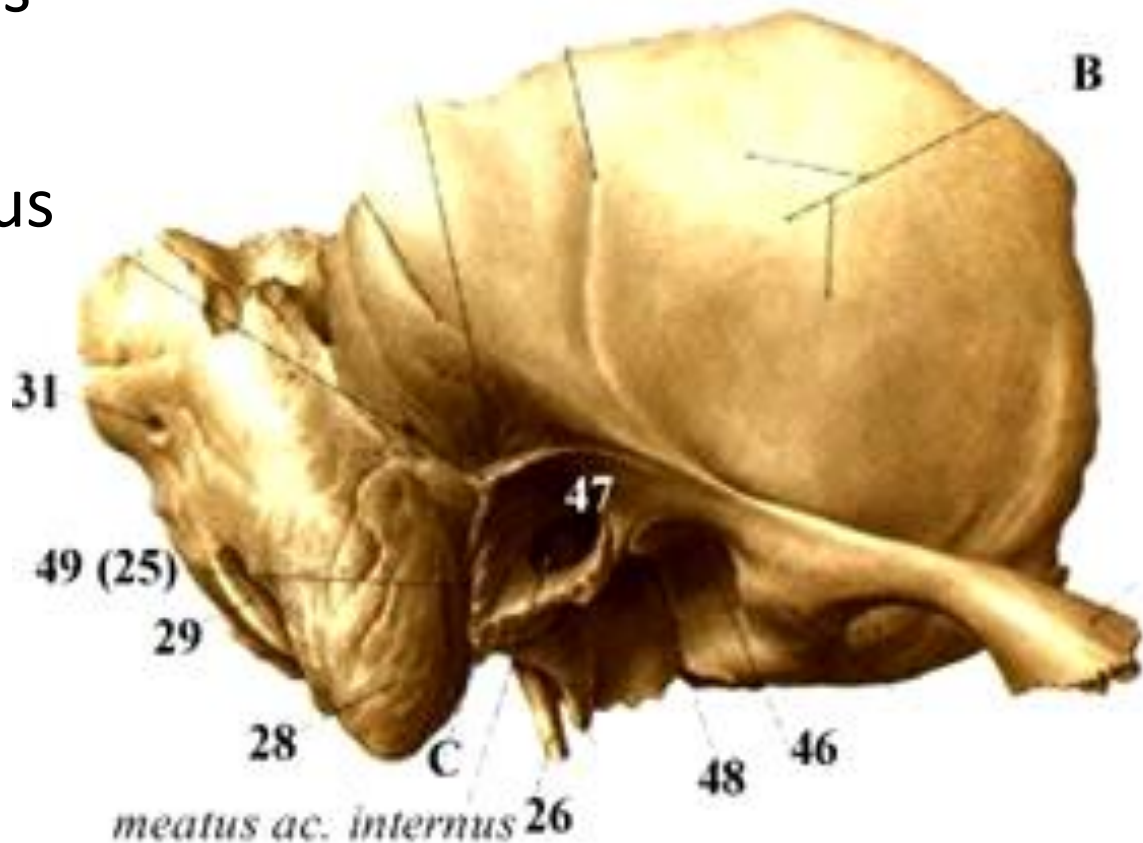
- Corpus
 - Sella turcica
 - Fossa hypophysialis
- Ala minor
 - Canalis opticus

Os temporale



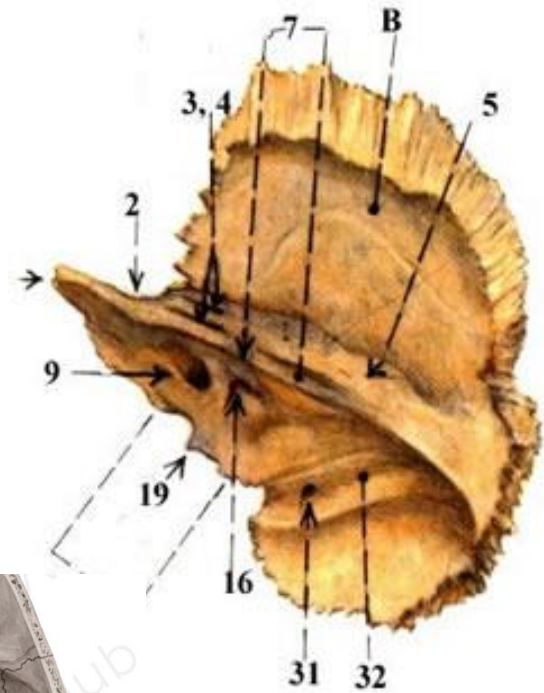
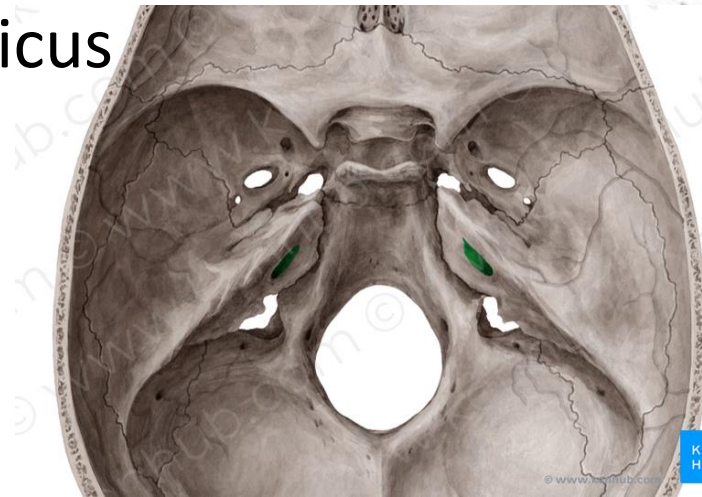
Os temporale

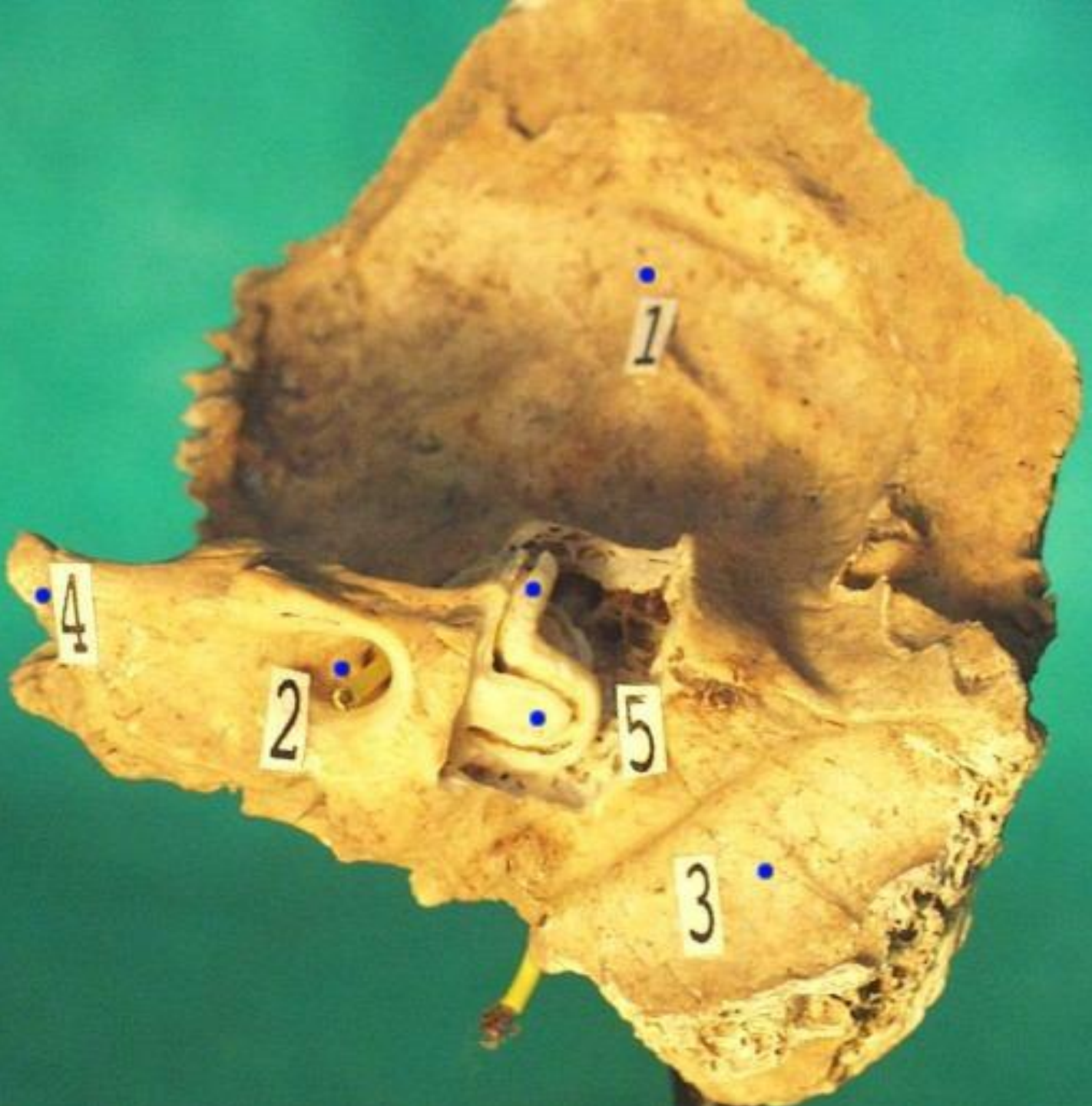
- Processus mastoideus
- Squama temporalis
- Processus zygomaticus
 - Fossa mandibularis
- Os tympanicum
- Processus styloideus



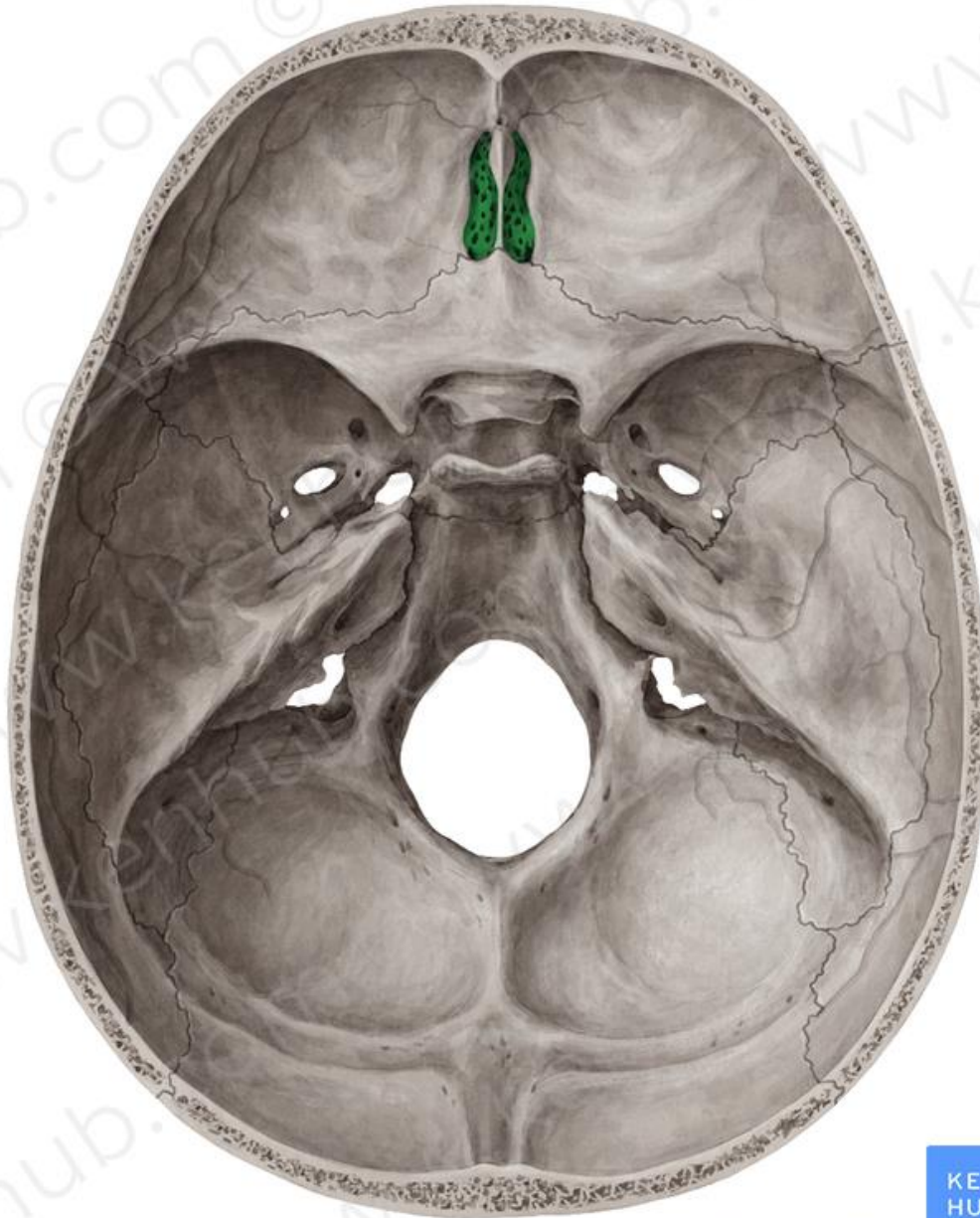
Os temporale

- Os petrosum – *pyramida*
 - Porus acusticus internus





Os et



sulcus ethm

cellulae
n

sulcus ethmoid

celul

ossis ethmoidalis

ethmoidalis

ethmoidalis
(acea)