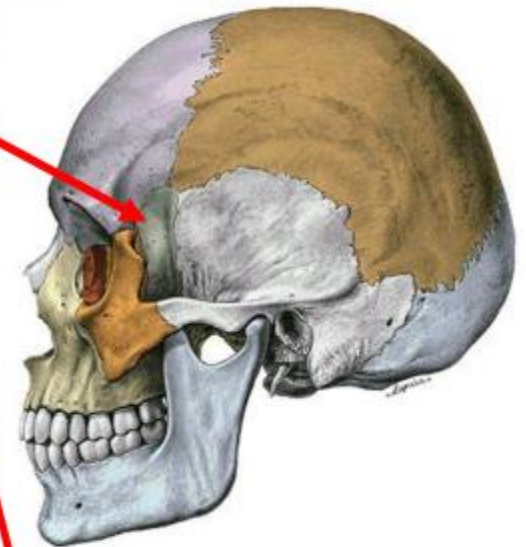


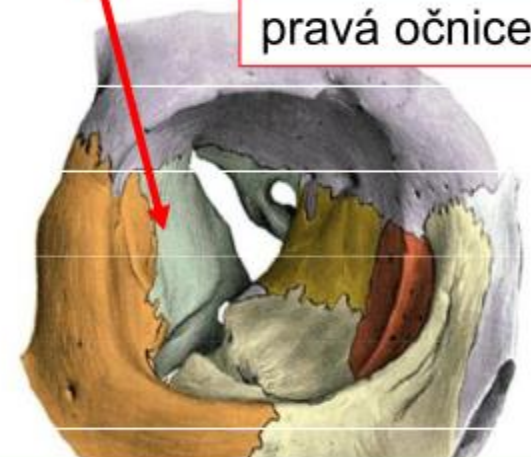
LEBKA_2



**Os sphenoidale
umístění**

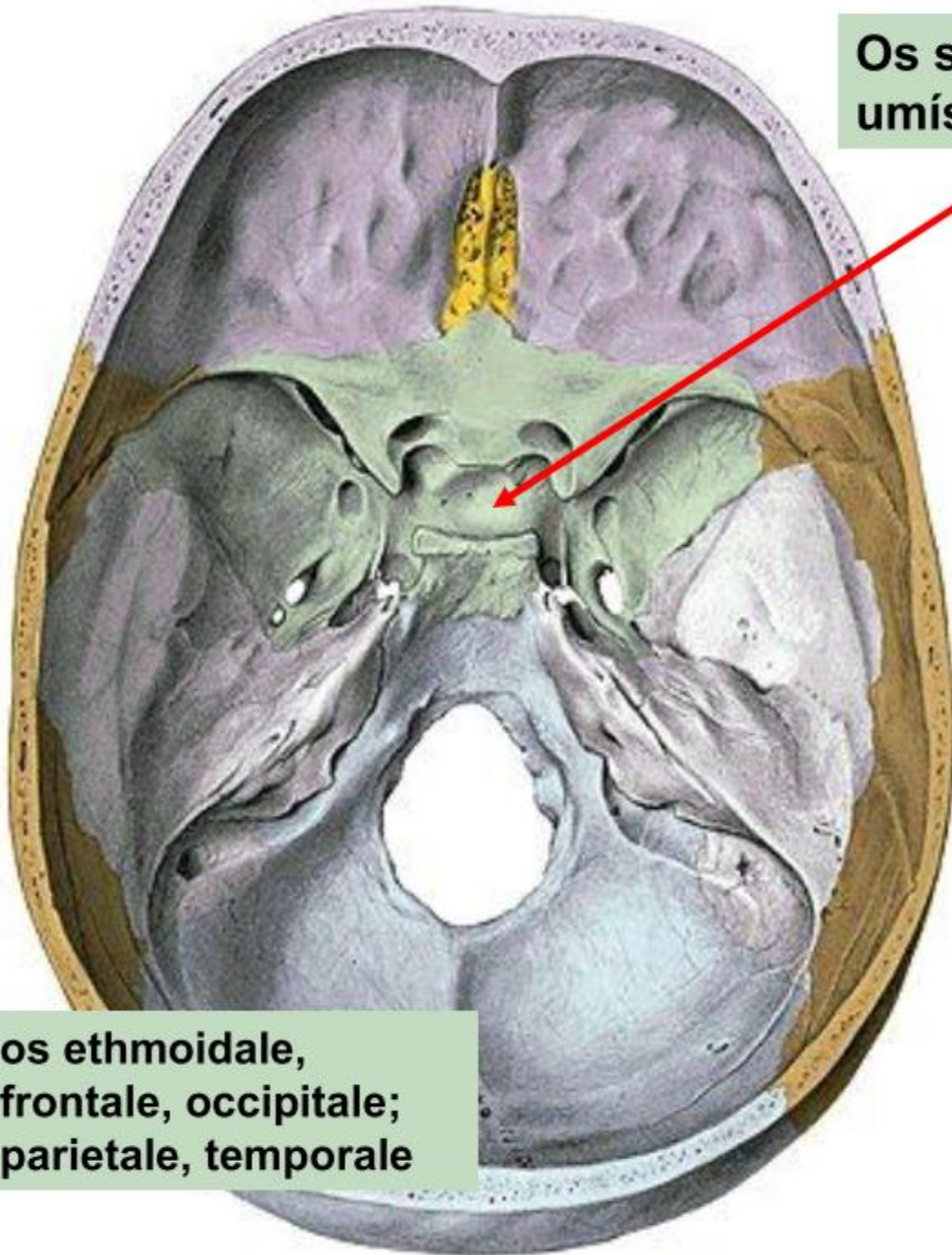


pravá očnice

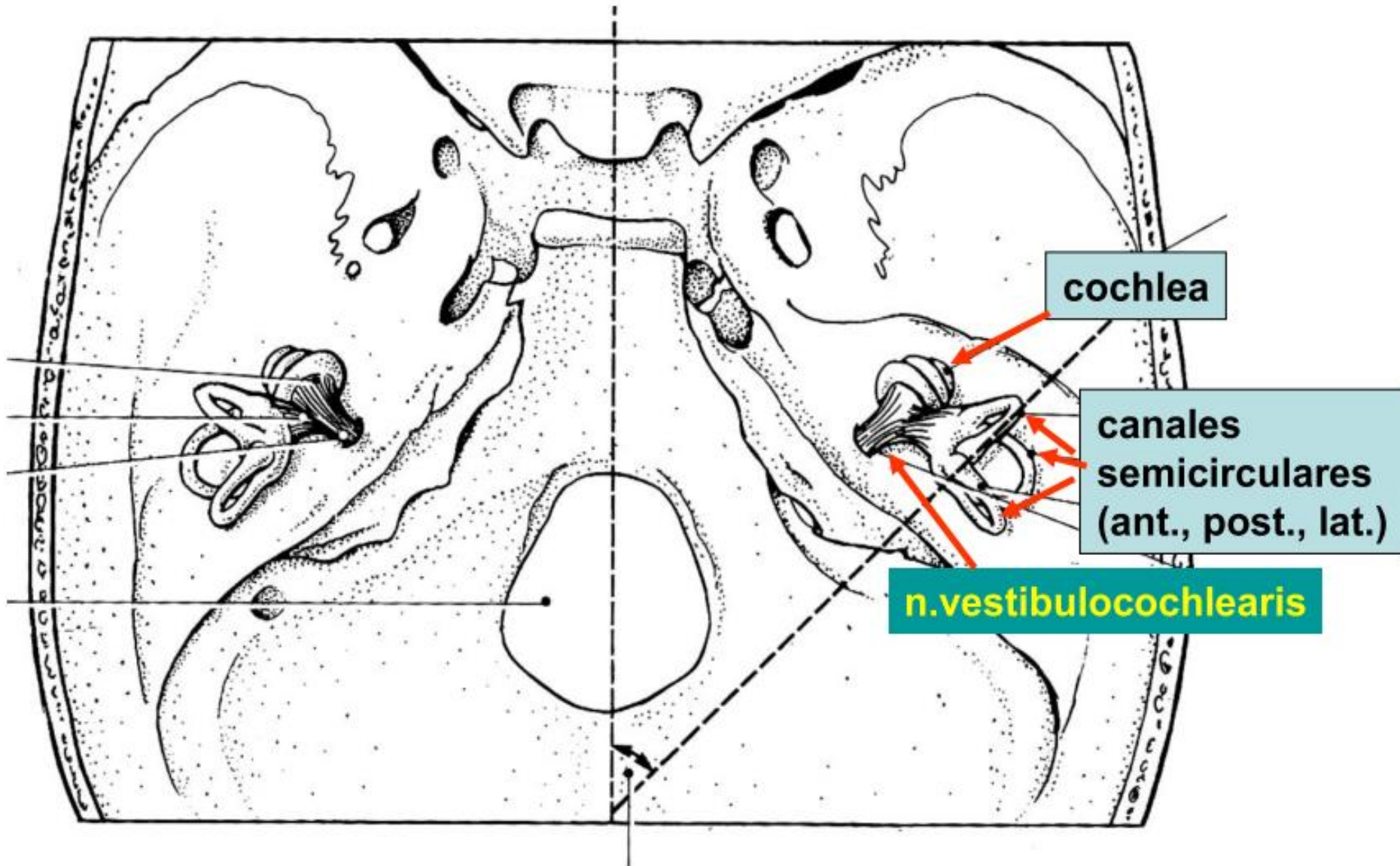


**os ethmoidale,
frontale, occipitale;
parietale, temporale**

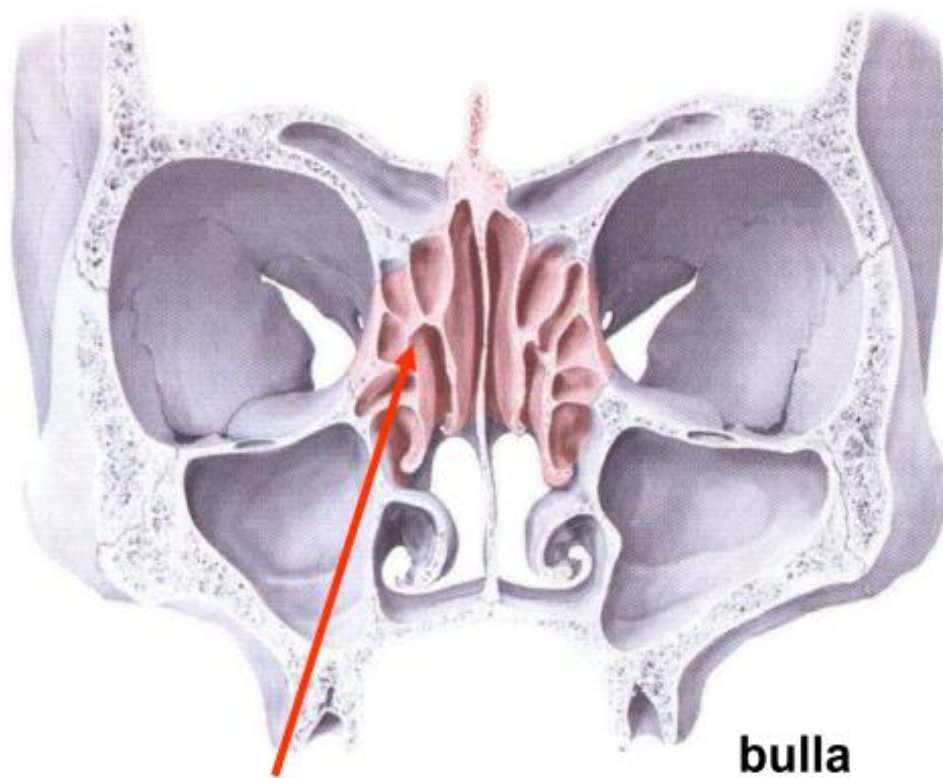
**os ethmoidale, frontale,
zygomaticum**



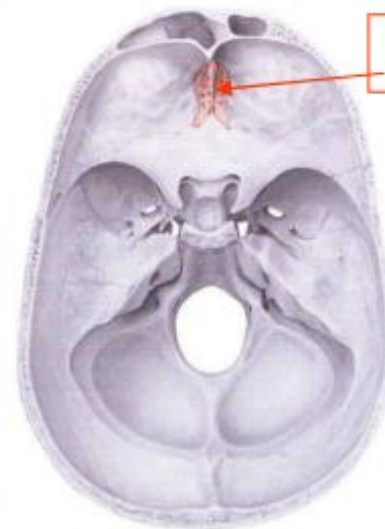
Poloha vnitřního ucha v os petrosus



Os ethmoidale



cellulae ethmoidales)



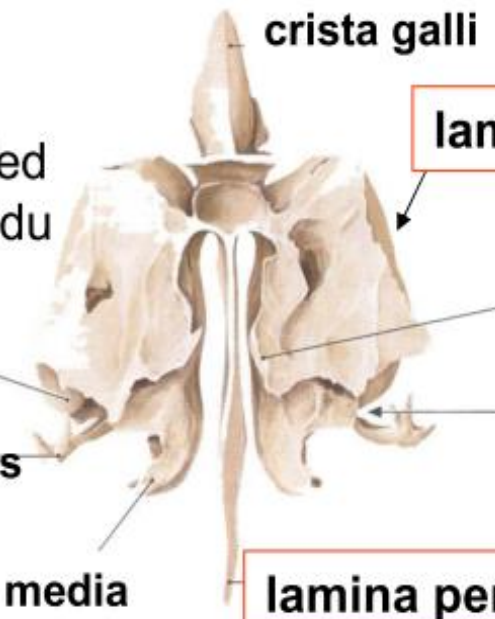
lamina cribrosa

Pohled
zezadu

bulle
ethmoidalis

processus uncinatus

concha nasalis media



crista galli

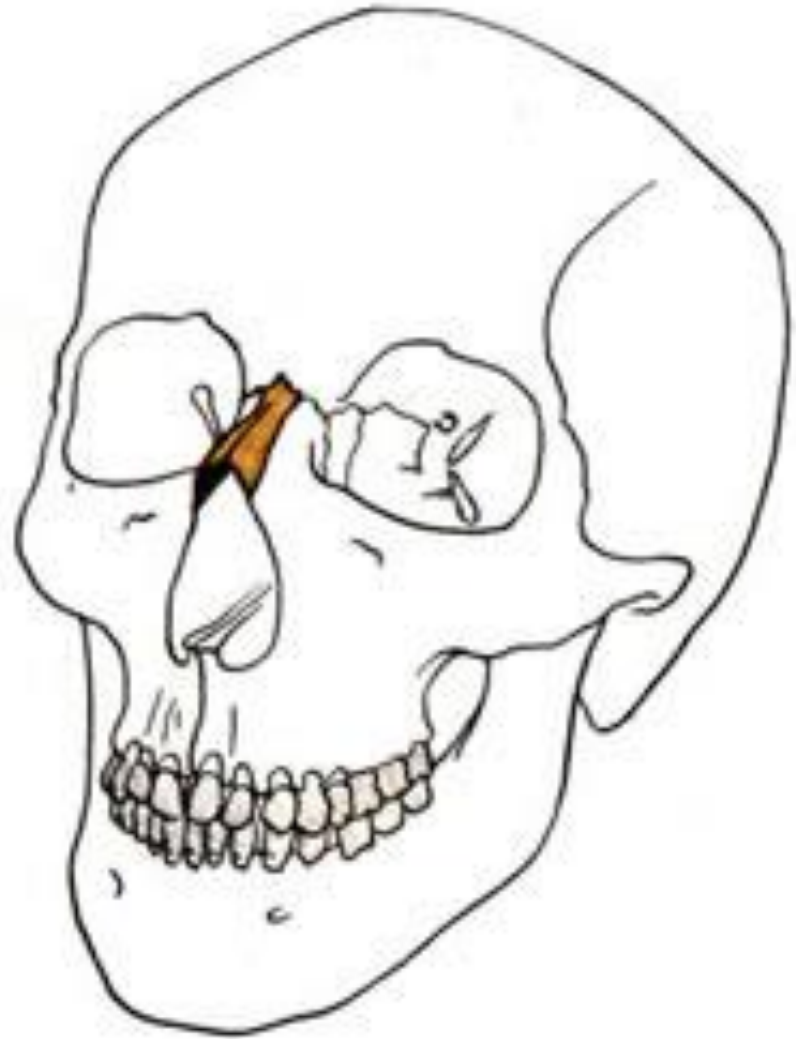
lamina orbitalis

lamina perpendicularis

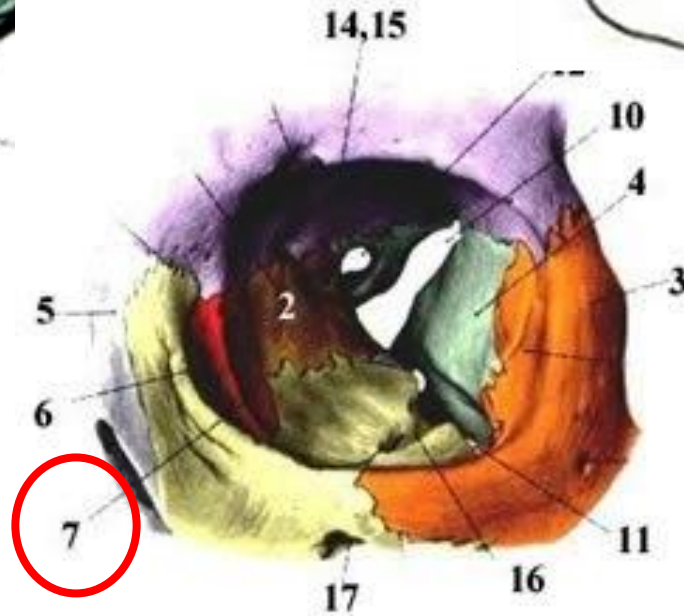
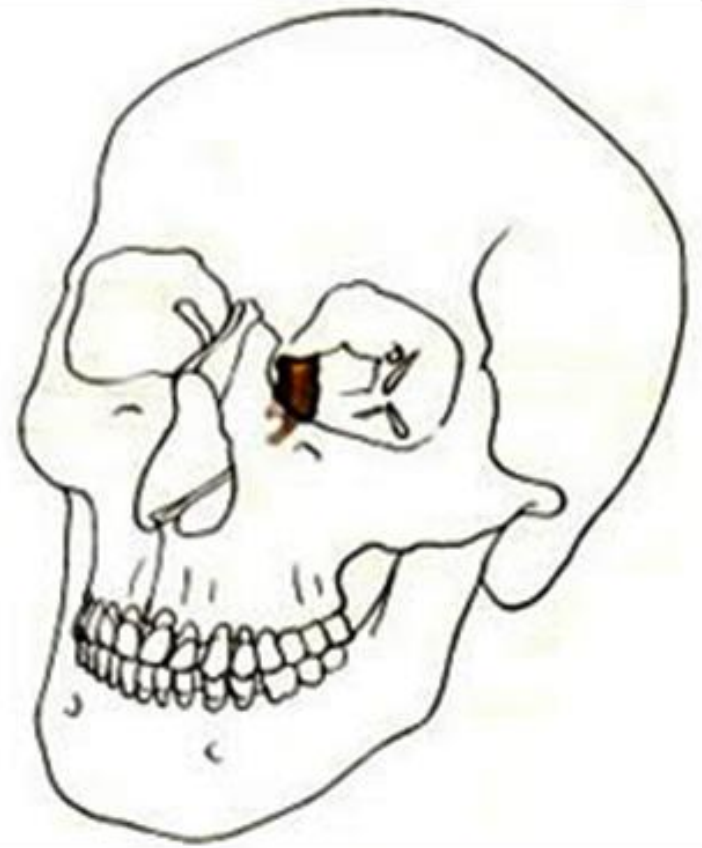
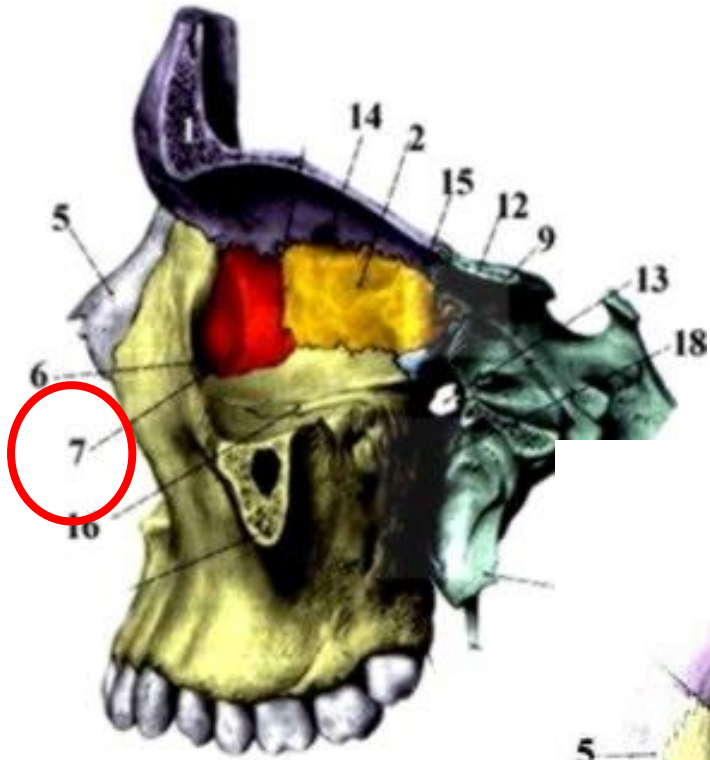
VOMER



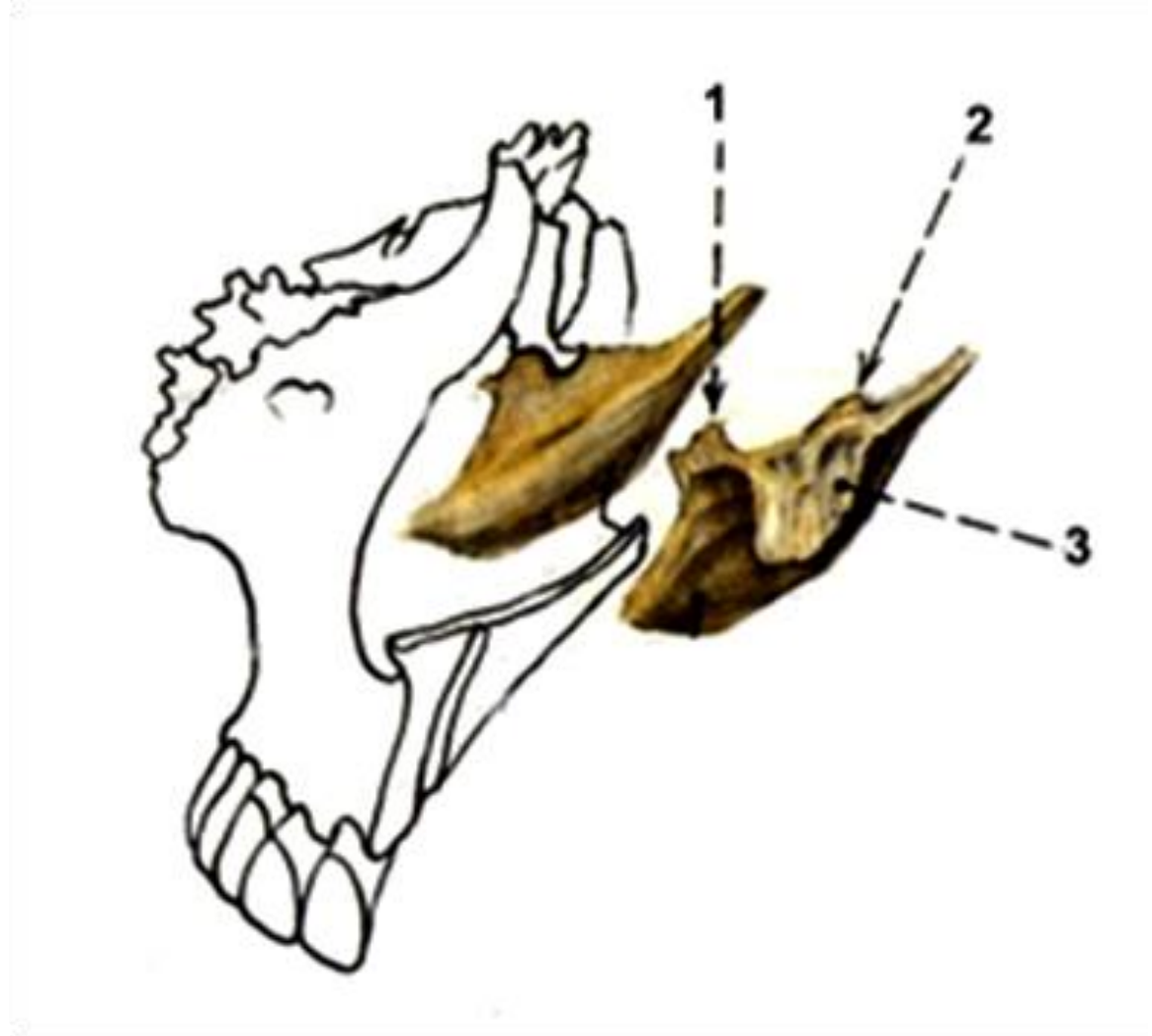
OS NASALE



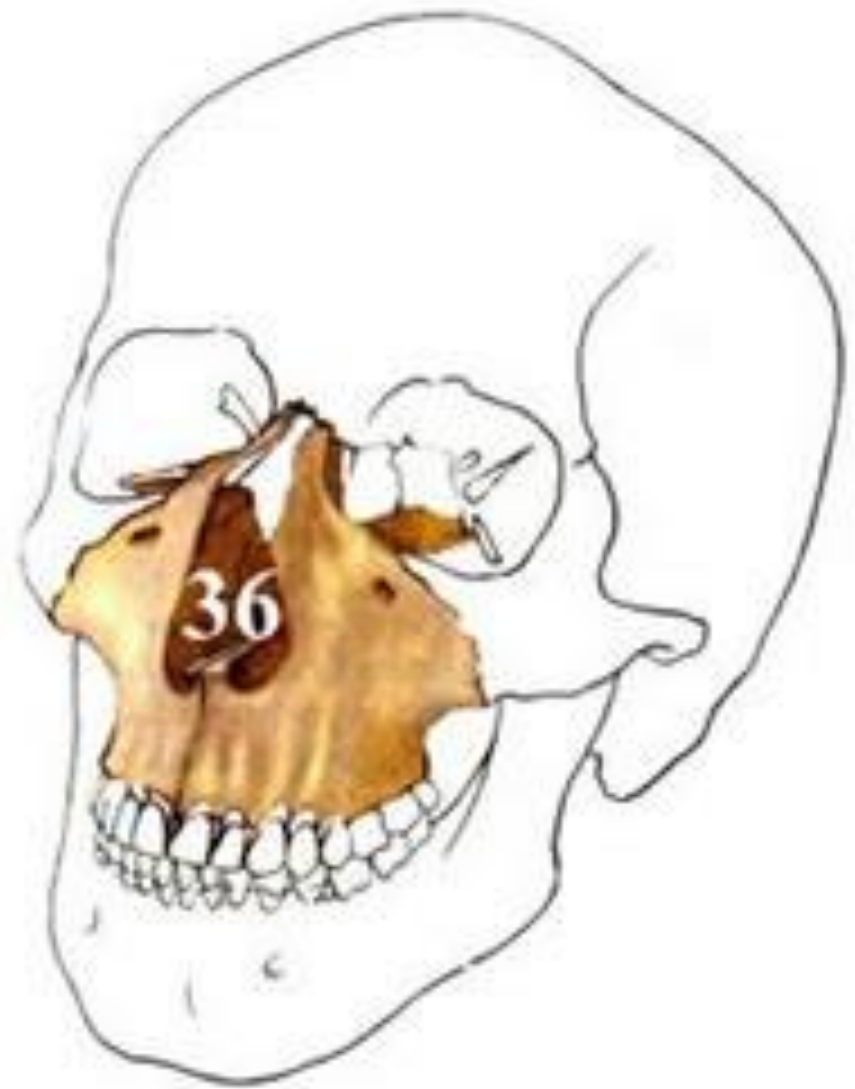
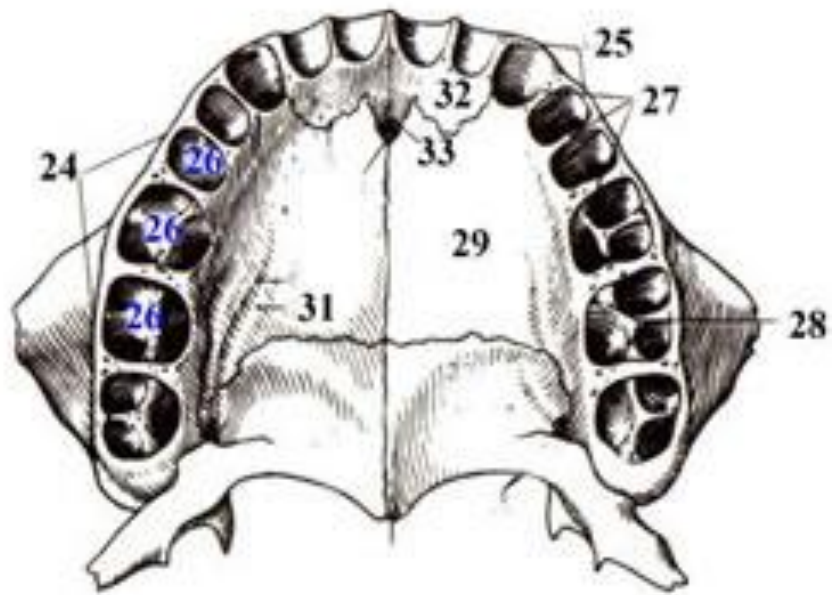
OS LACRIMALE



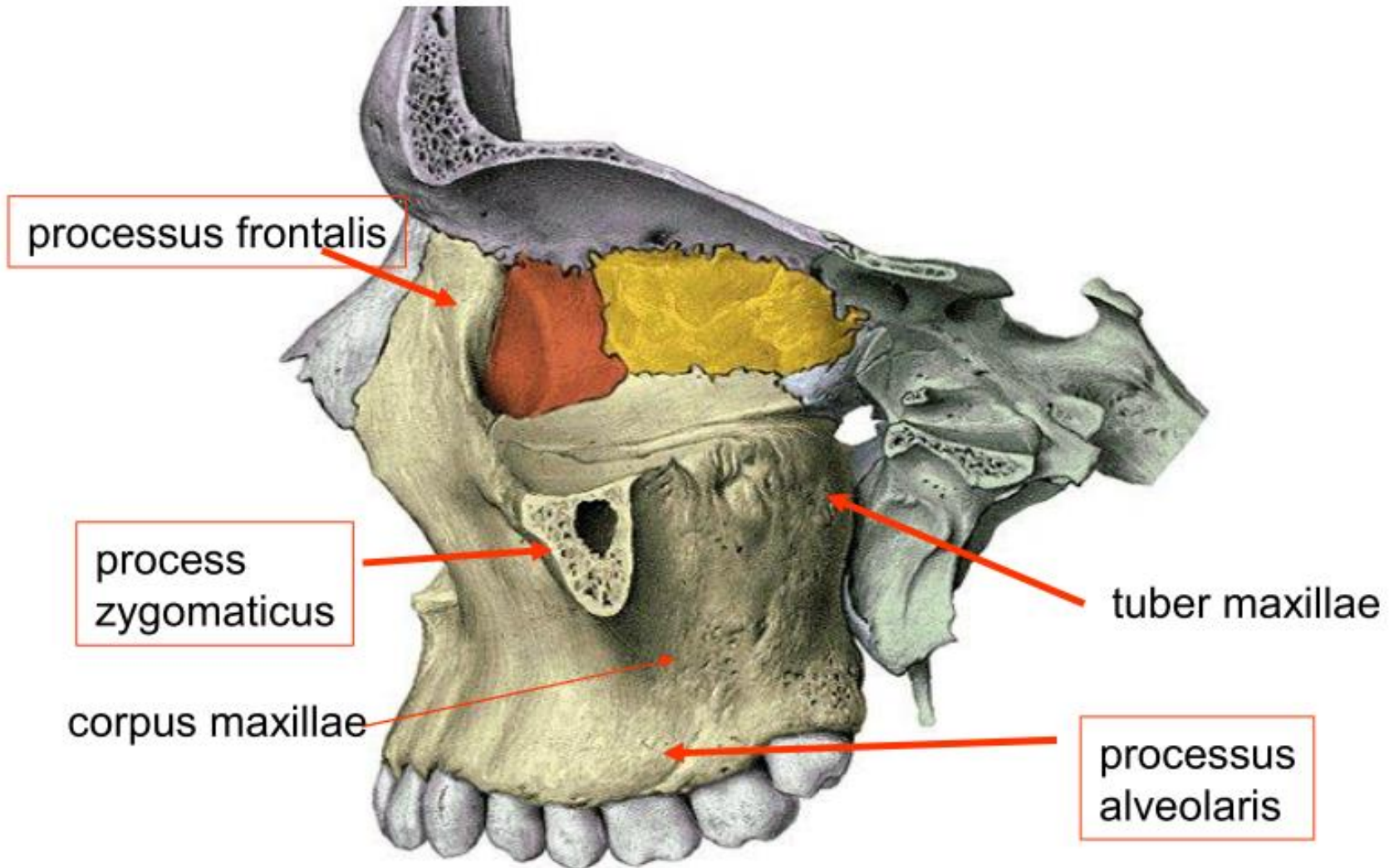
Concha nasalis inferior



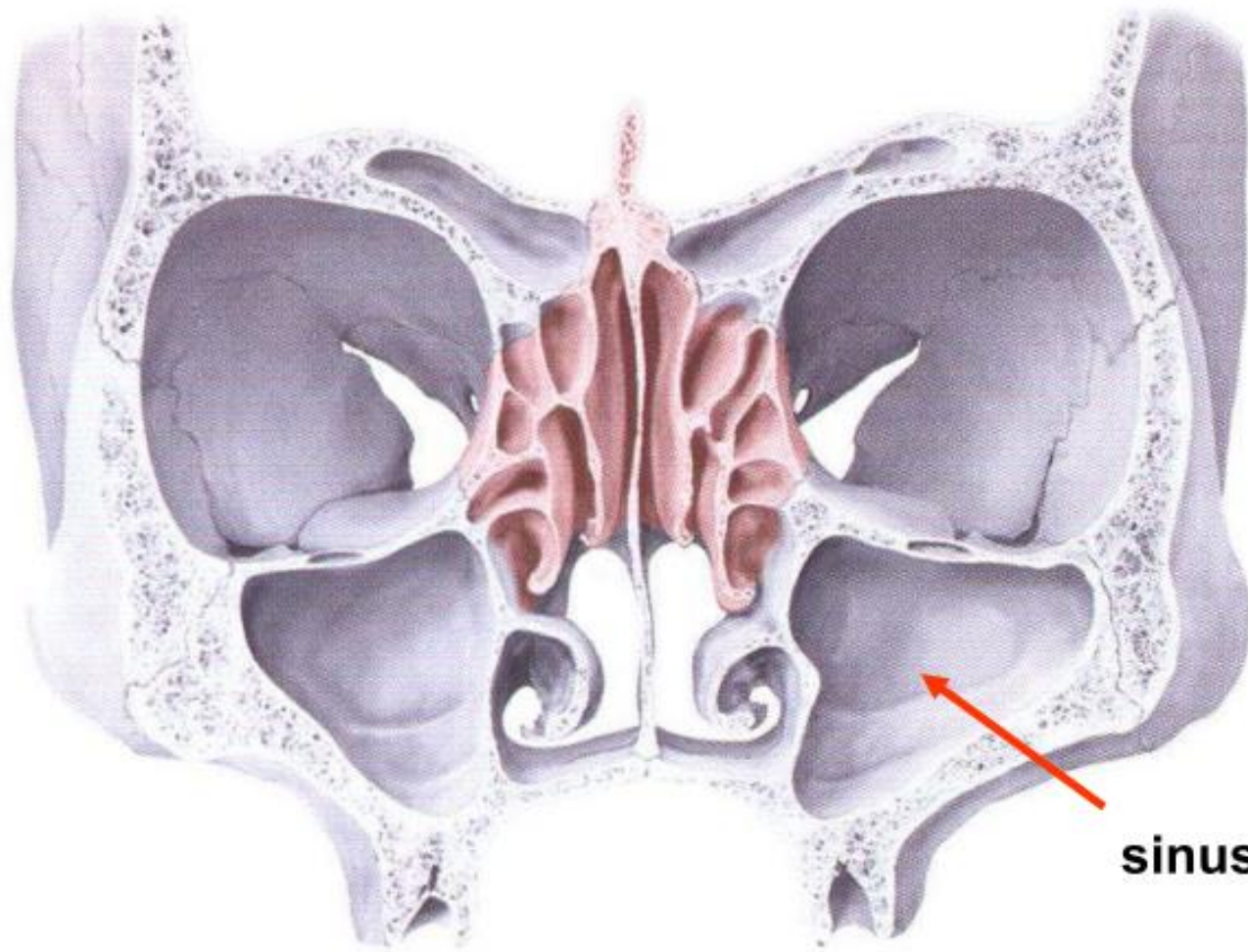
MAXILLA



Maxilla



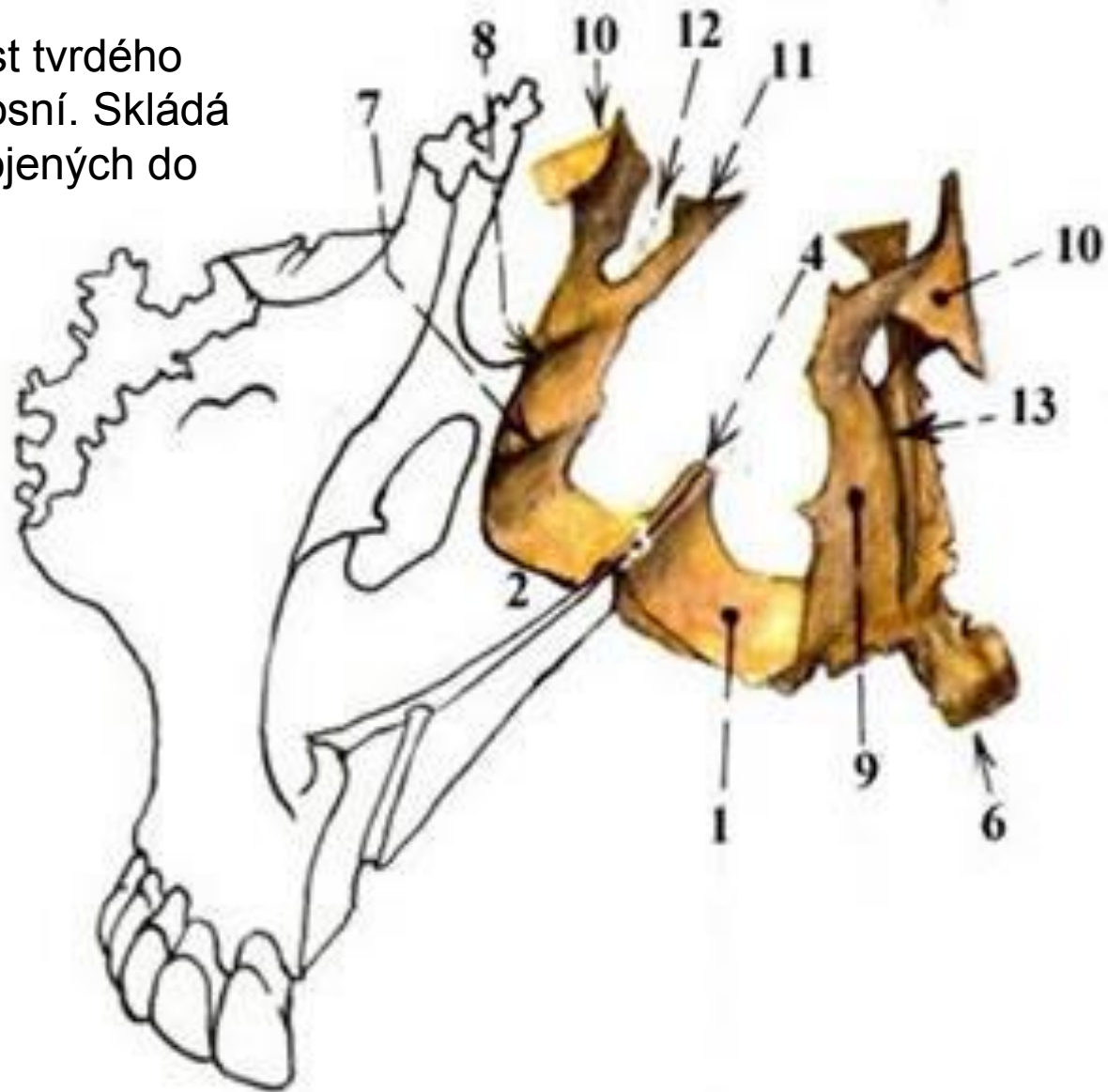
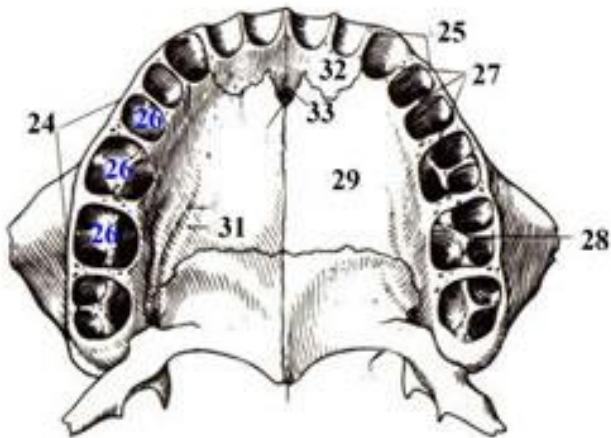
Maxilla



sinus maxillaris

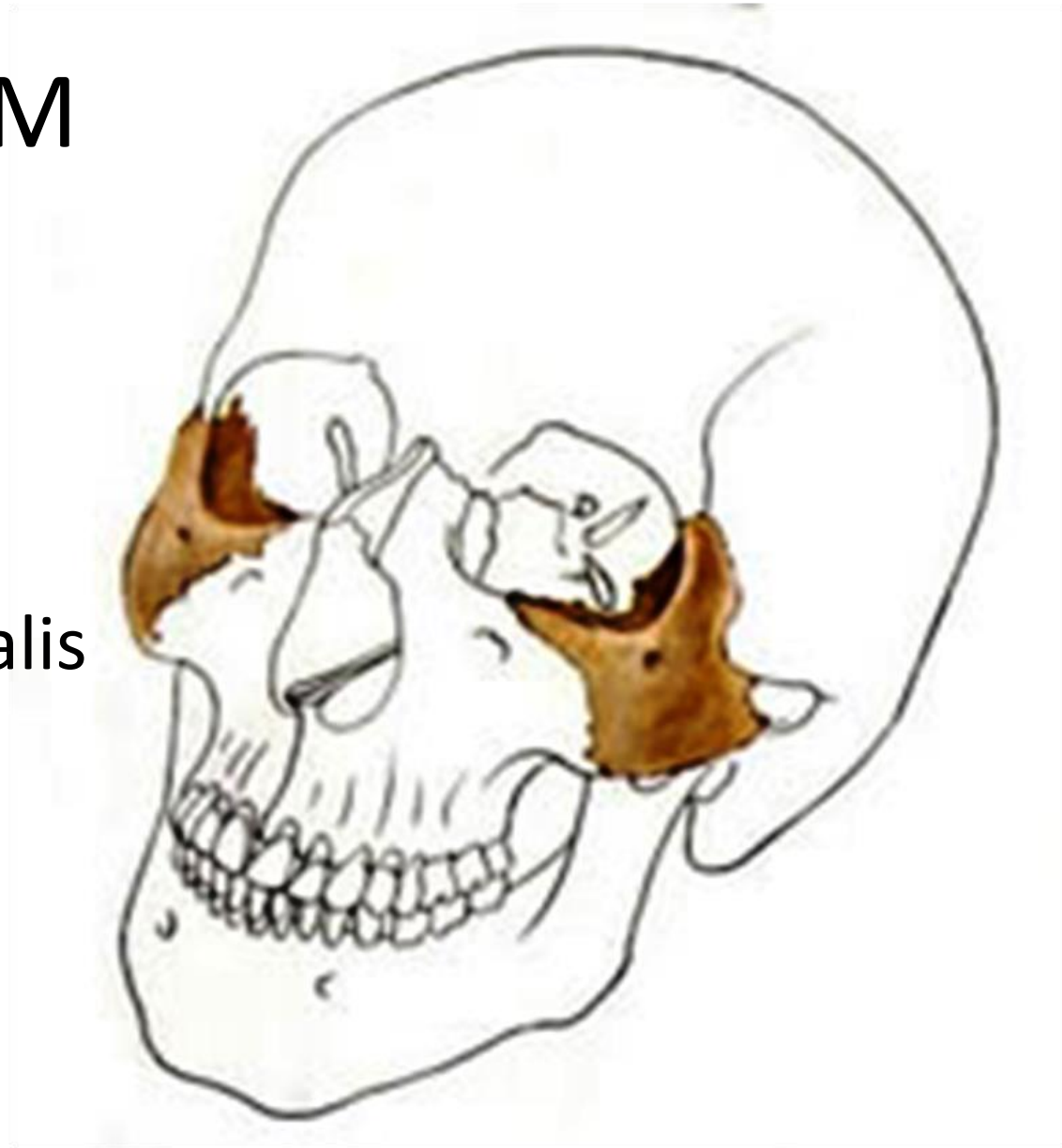
OS PALATINUM

Párová kost tvořící dorzální část tvrdého patra a laterální stěny dutiny nosní. Skládá se ze dvou plochých lamel, spojených do tvaru písmene L

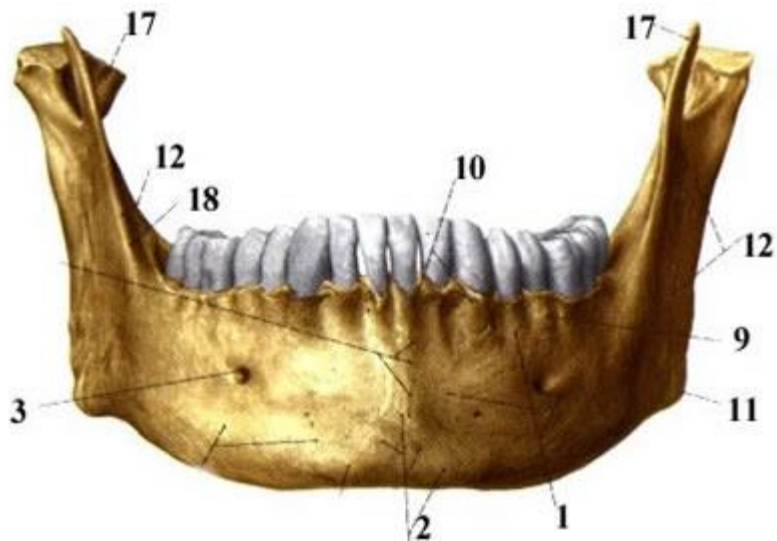
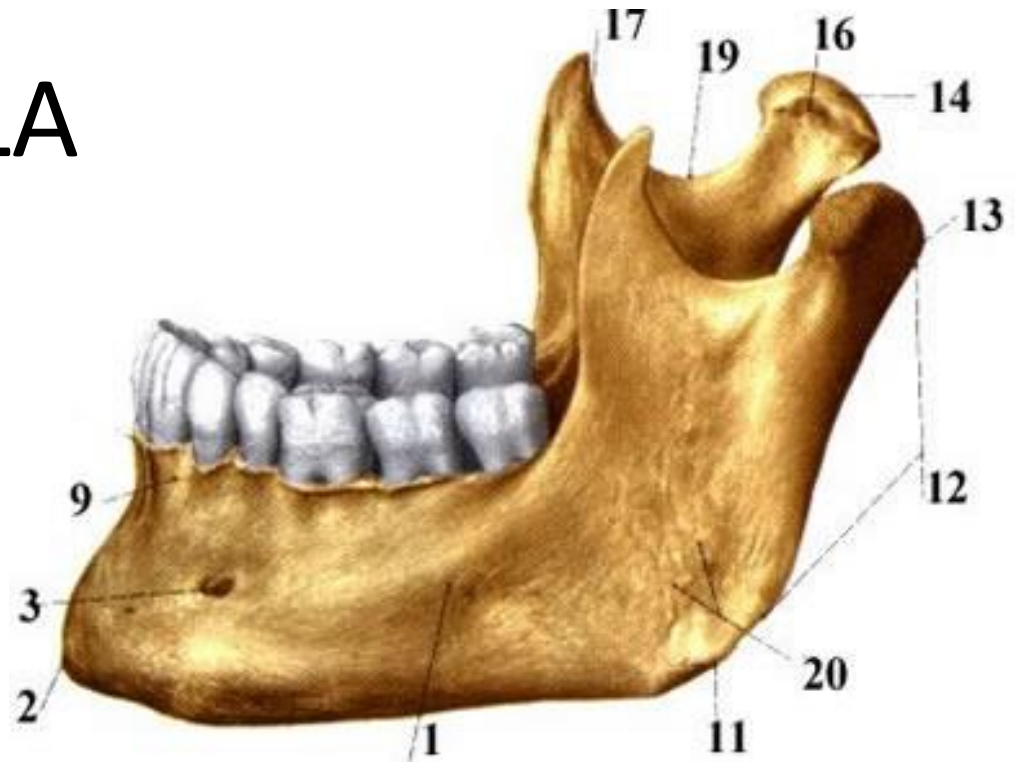


OS ZYGOMATICUM

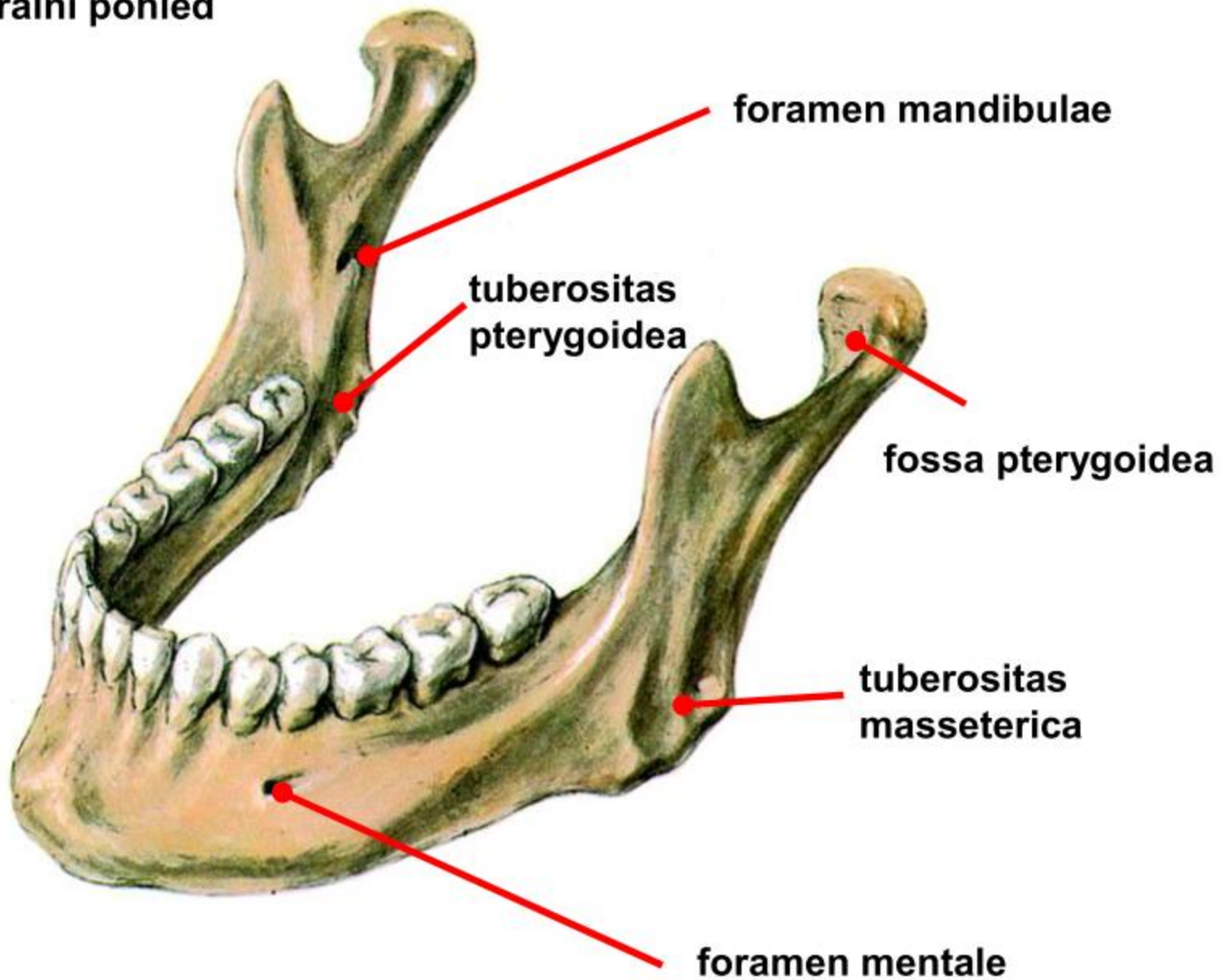
- Processus:
 - Frontalis
 - Maxillaris
 - Temporalis
- Margo infraorbitalis



MANDIBULLA

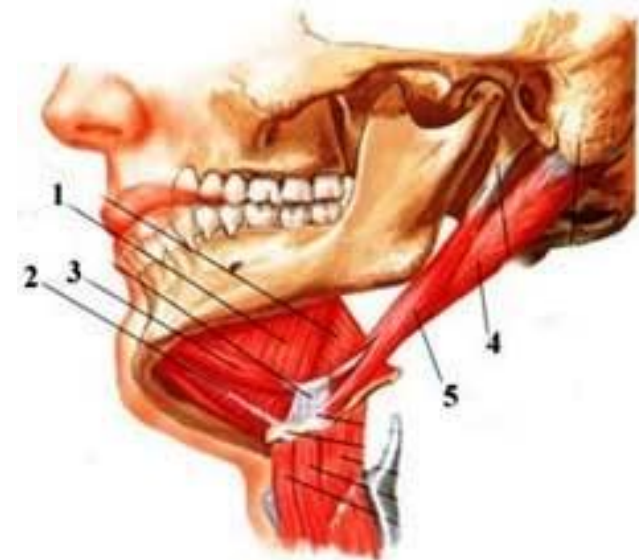
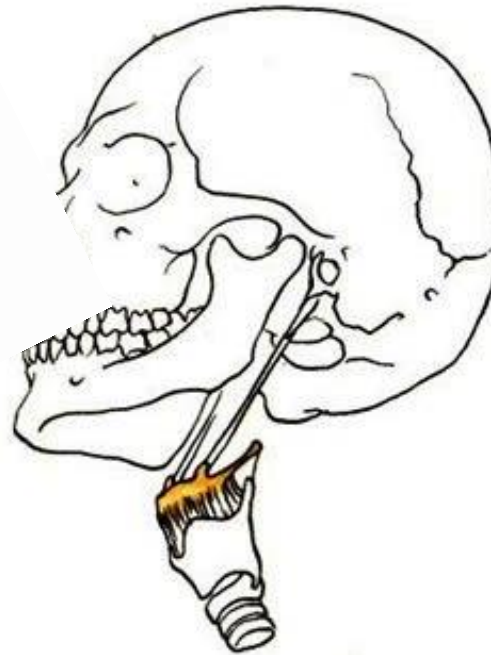


Mandibula
anterolaterální pohled



OS HYOIDEUM

Nepárová kost ležící vpředu v krčním svalstvu mezi dolní čelistí a hrtanem. Skládá se ze tří částí – corpus ossis hyoidei, párové cornu majus ossis hyoidei a cornu minus ossis hyoidei. Kost je fixovaná k lebeční bázi spojením s processus styloideus ossis temporalis



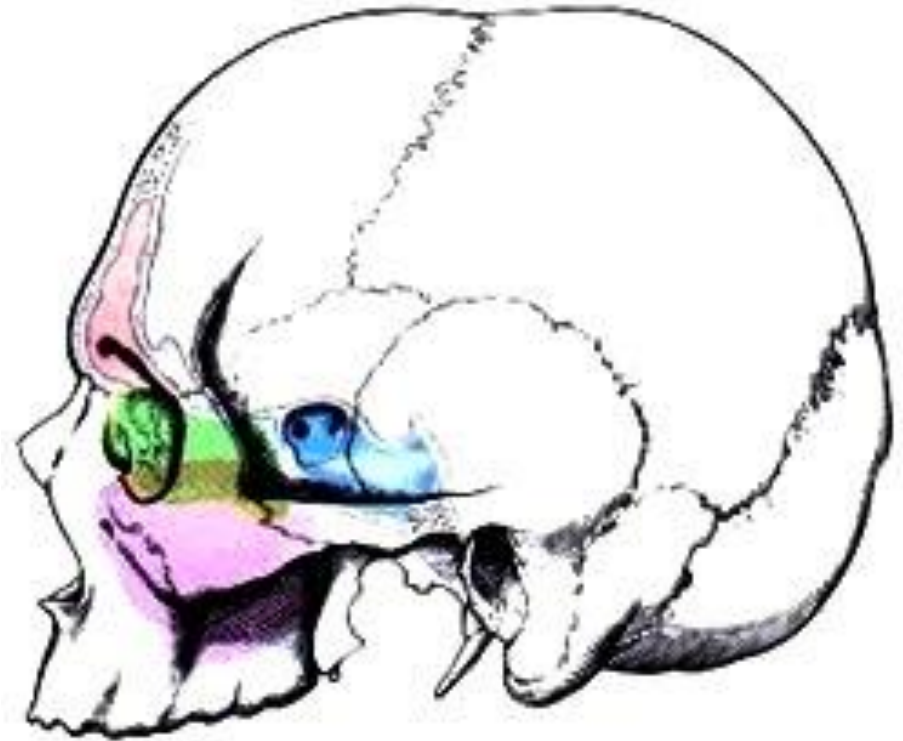
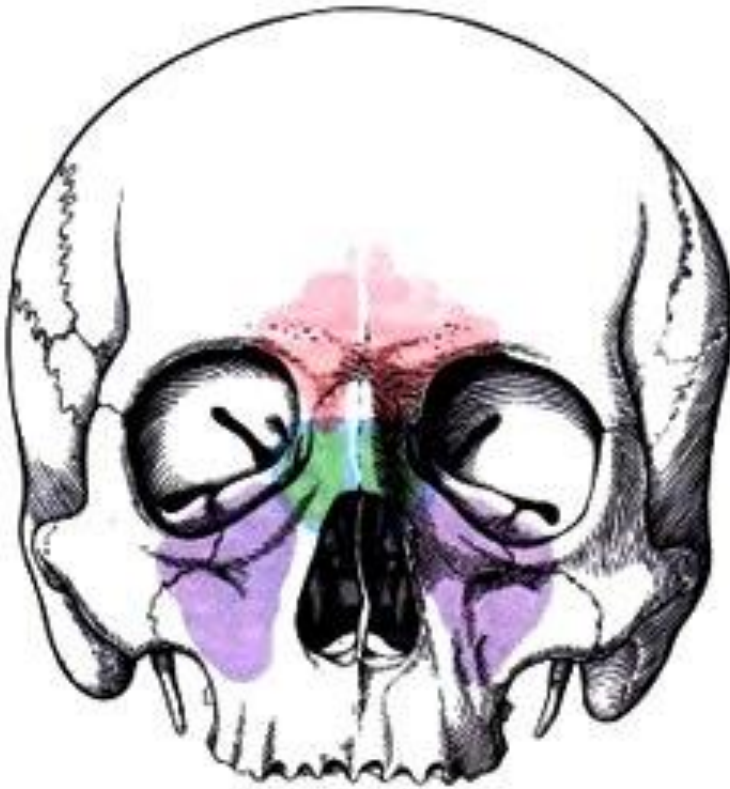
SINUS PARANASALIS

Sinus frontalis

Sinus ethmoidalis

Sinus maxillaris

Sinus sphenoidalis

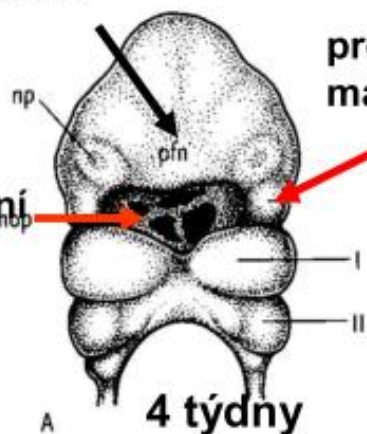


Vývoj obličeje

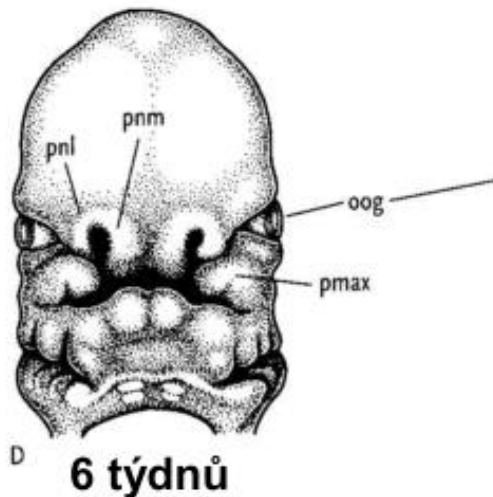
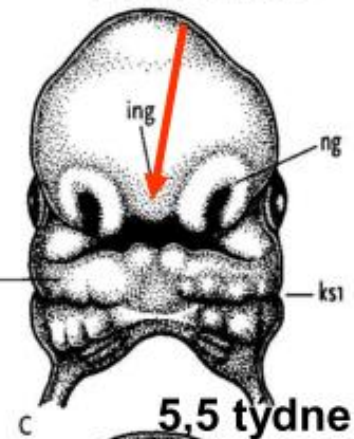
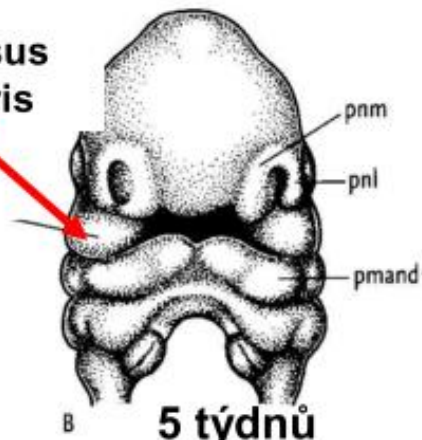
prominentia nasofrontalis

sulcus internasalis

buccopharyngeální membrána



processus maxillaris



Lebka novorozence

Velké neurocranium

Nízké splanchnocranium

Prominují tubera frontalia et parietalia (počátky osifikace)

Fonticuli cranii

Vazivové pásky mezi kostmi klenby lebeční - pohyblivost

Nejsou vyvinuty paranasální dutiny

Os frontale rozdělené švem

Patrný šev mezi maxillou a premaxillou

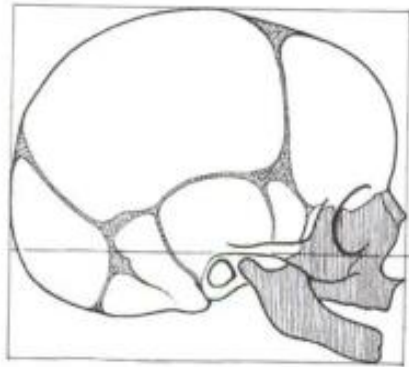
Symphysis menti

Angulus mandibulae -150-160 stupňů

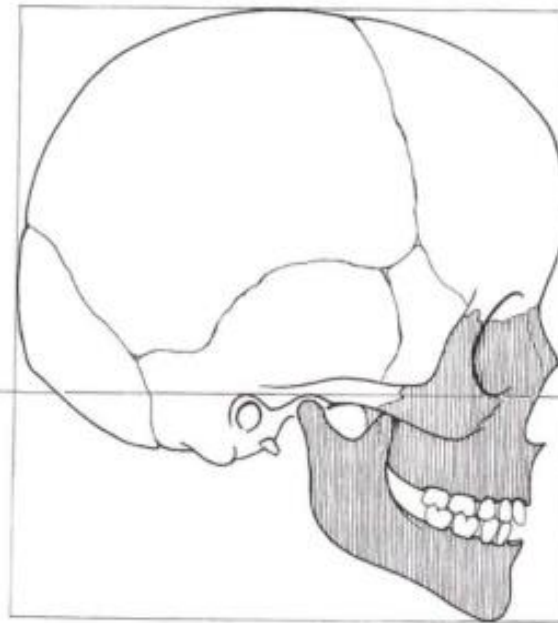
Os tympanicum – anulus tympanicus



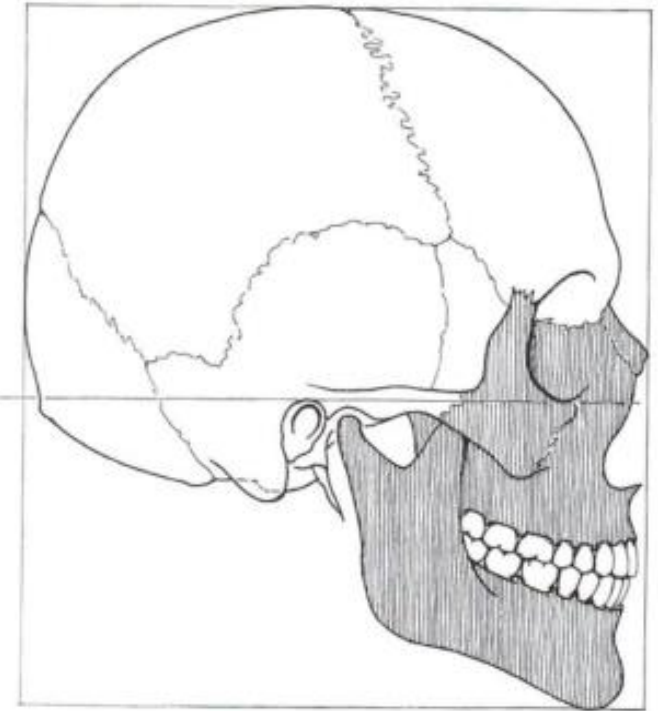
Proporce neurocrania a splanchnocrania



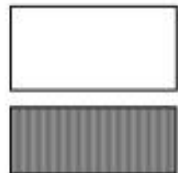
novorozenec



7let



dospělí



neurocranium

splanchnocranium

Kraniosynostosy

tuber frontale

sutura metopica

sutura coronalis

fonticulus anterior

tuber parietale

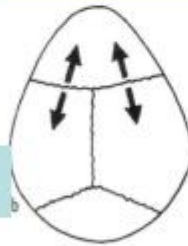
sutura sagittalis

sutura lambdoidea

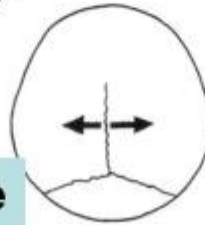
fonticulus posterior

předčasný uzávěr švů

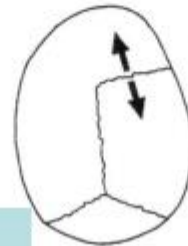
trigonocephalie



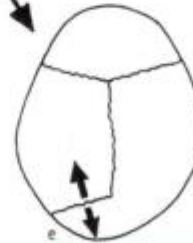
brachycephalie



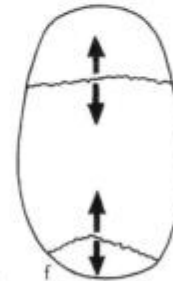
anterior plagiocephalie



posterior plagiocephalie



dolichocephalie (scaphocephalie)



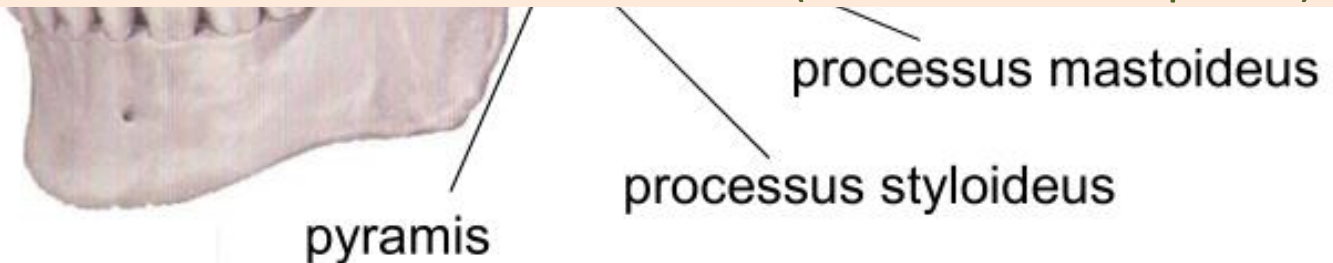
Desmocranium a chondrocranium

Chondrocranium

- os occipitale –basis a partes laterales
- os temporale – pyramis a processus mastoideus
- os sphenoidale (kromě lamina medialis processus pterygoidei)
- os ethmoidale
- concha nasalis inferior
- malleus, incus stapes
- processus styloideus
- os hyoideum

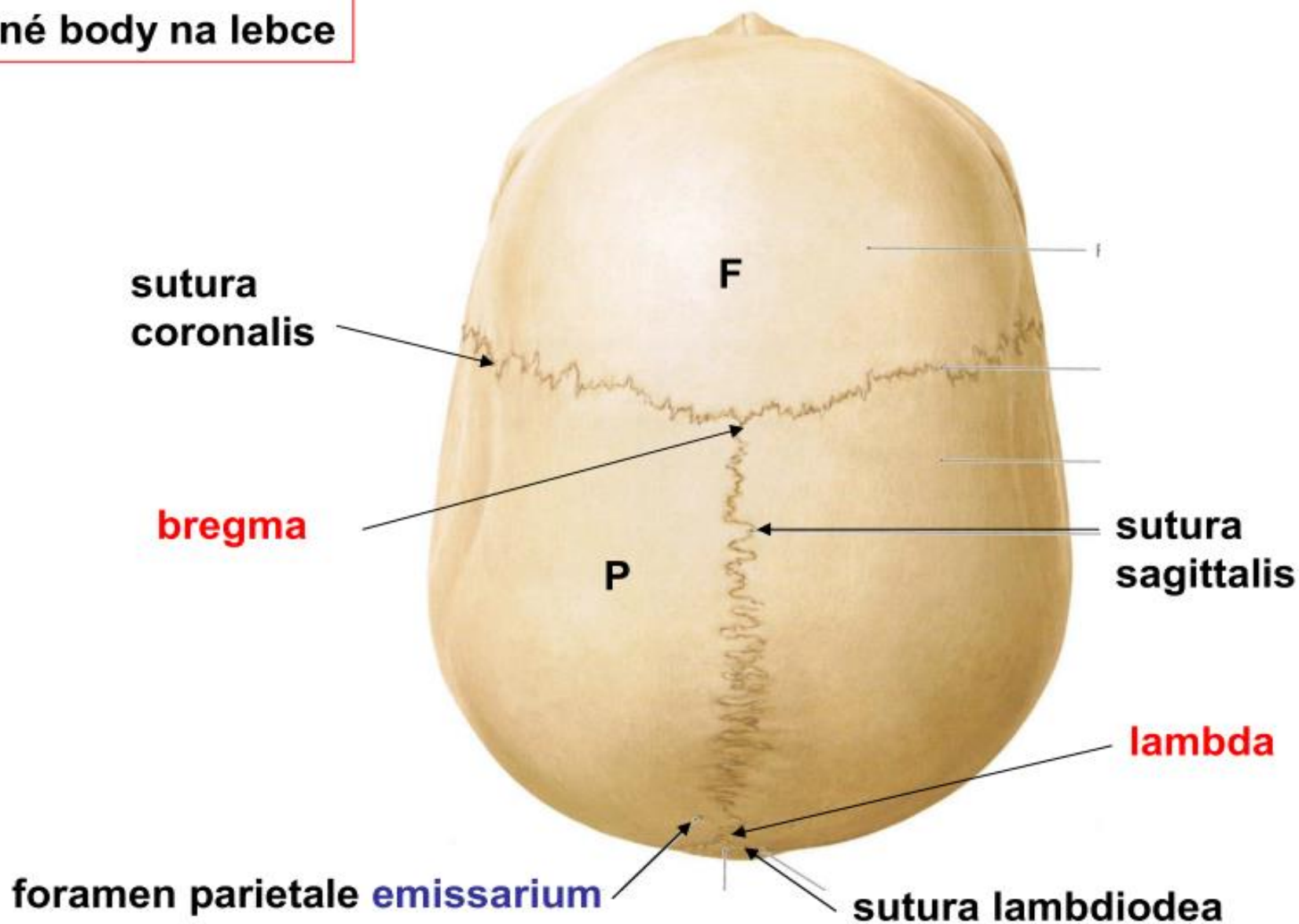
Desmocranium

- os occipitale – squama
- os parietale
- os frontale
- os temporale –squama
- os tympanicum
- os nasale
- os lacrimale
- vomer
- lamina medialis processus pterygoidei
- os palatinum
- os zygomaticum
- maxilla
- mandibula (Meckelova chrupavka)



Calva –norma verticalis

měrné body na lebce



Calva zevnitř

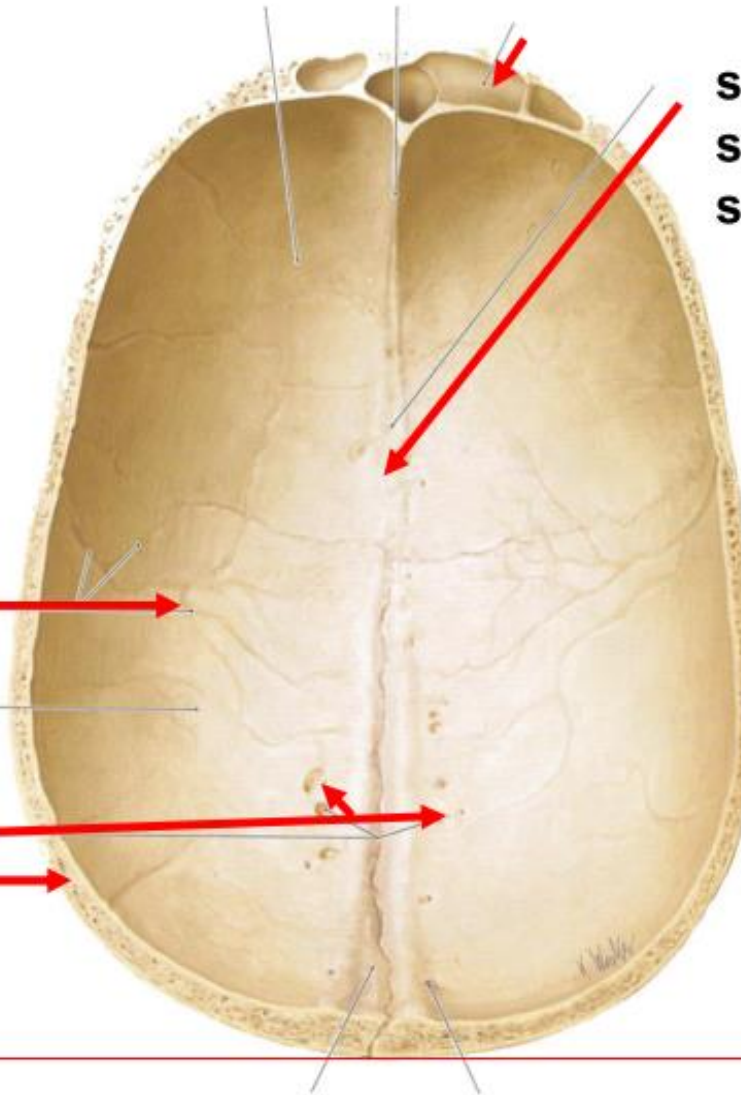
sulci arteriae
meningae mediae

foveolae granulares

diploe

frontal sinus

sulcus sinus
sagittalis
superioris



sinus x sinus

dutina vyplněná vzduchem x žíla mezi dura mater and periostem nebo jen mezi dura mater