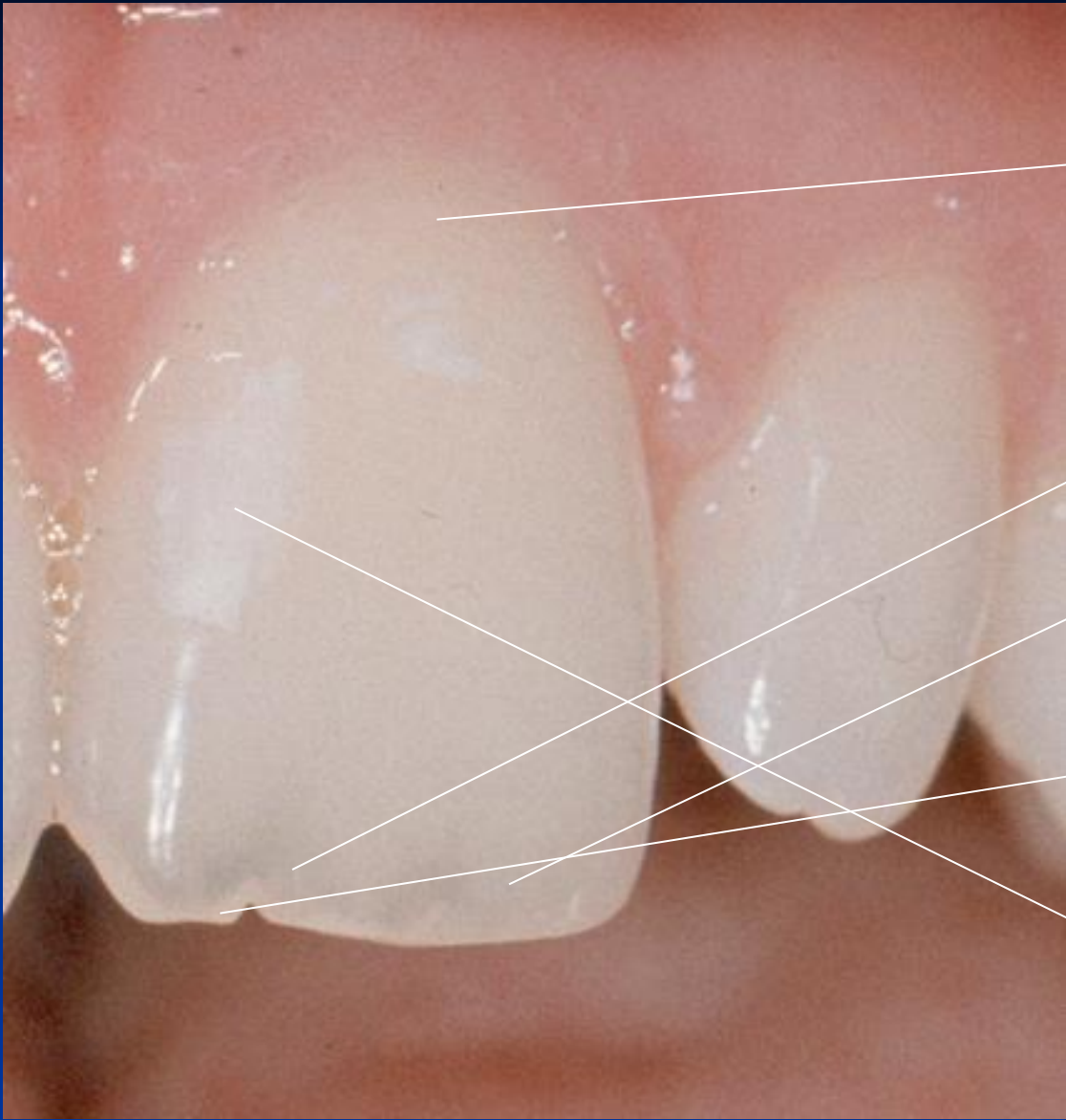


Frontal area

Colour

Shape

Surface



colour

Desaturation

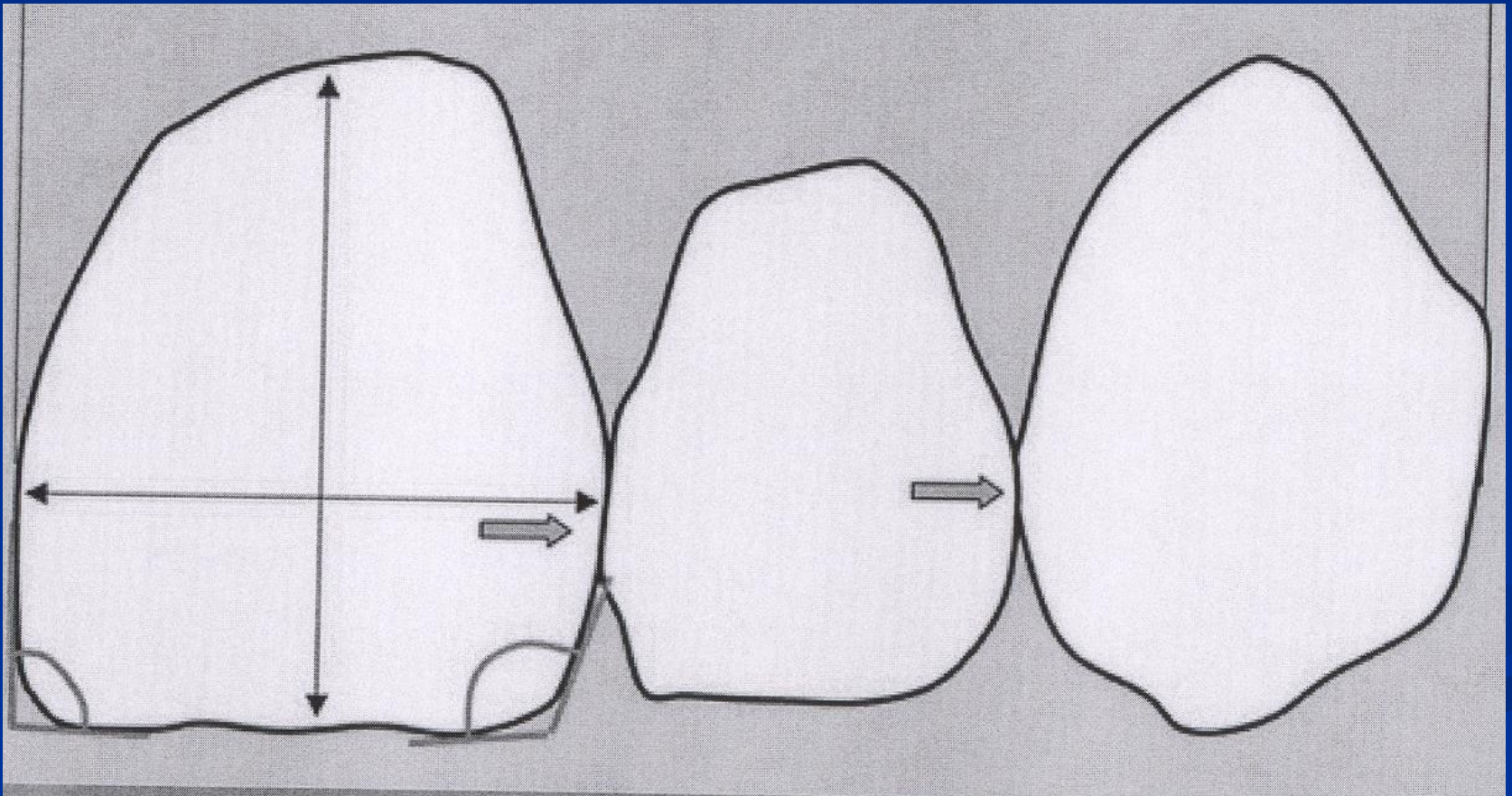
Opalescence

mamelons

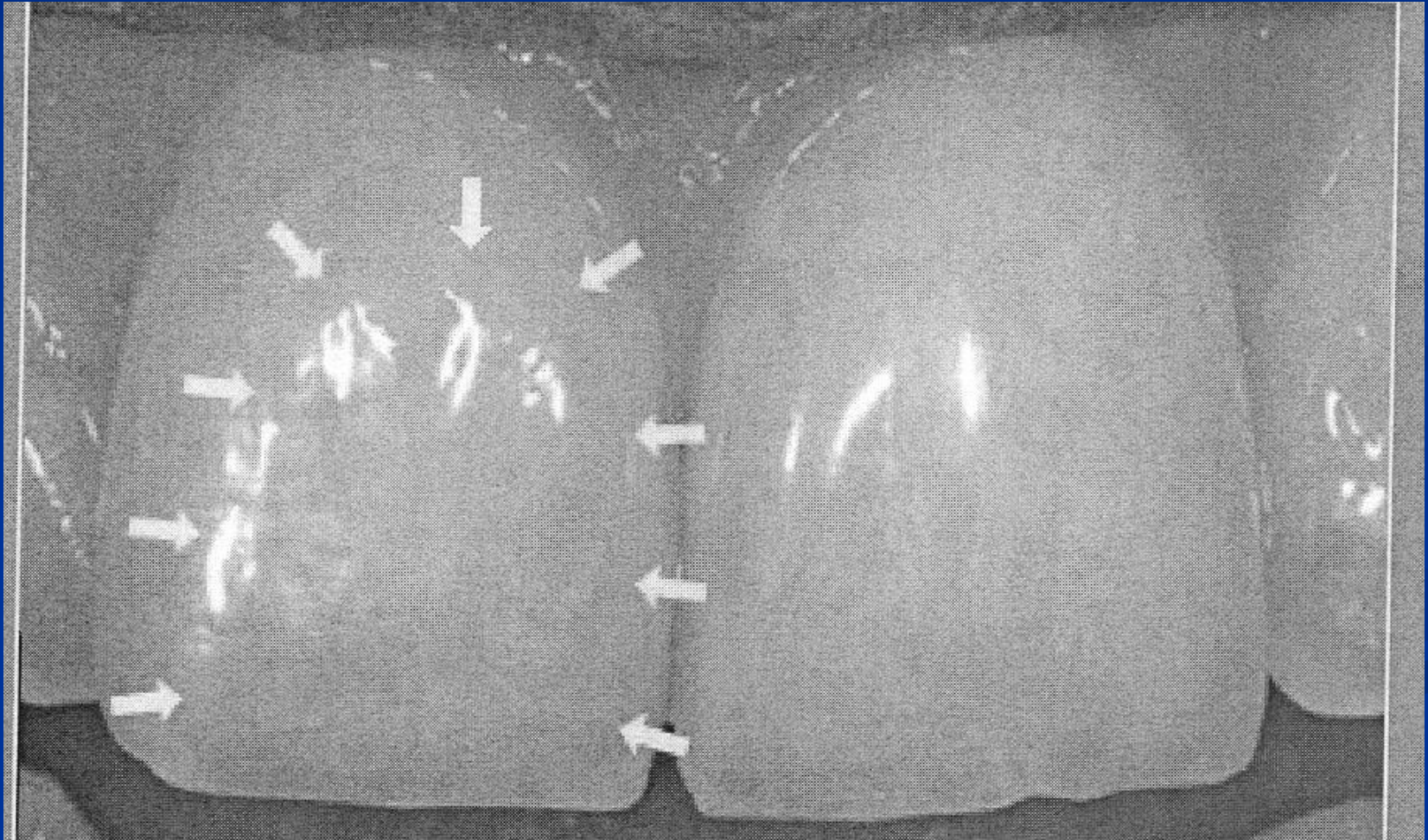
Halo efekt

Spots
Special
characterization

Shape and size



Optical width

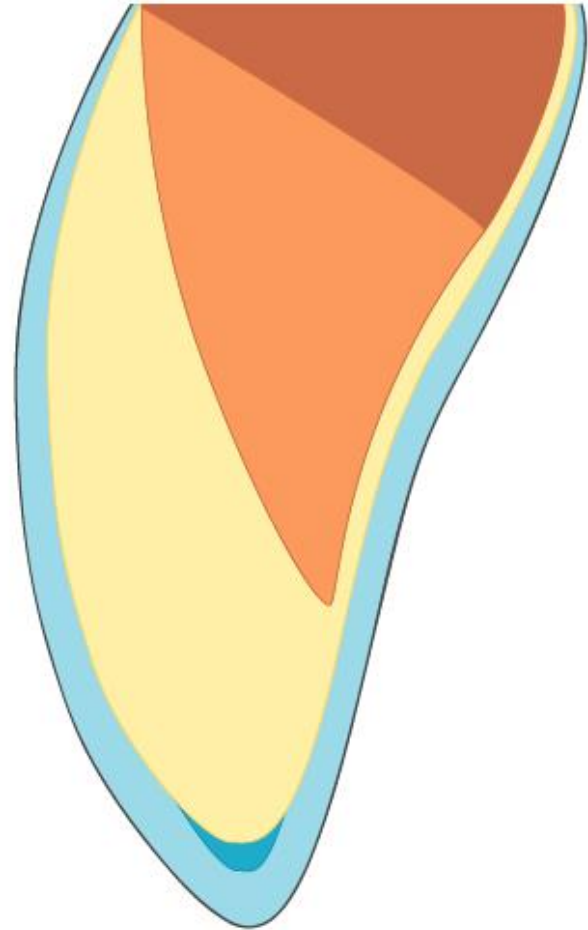
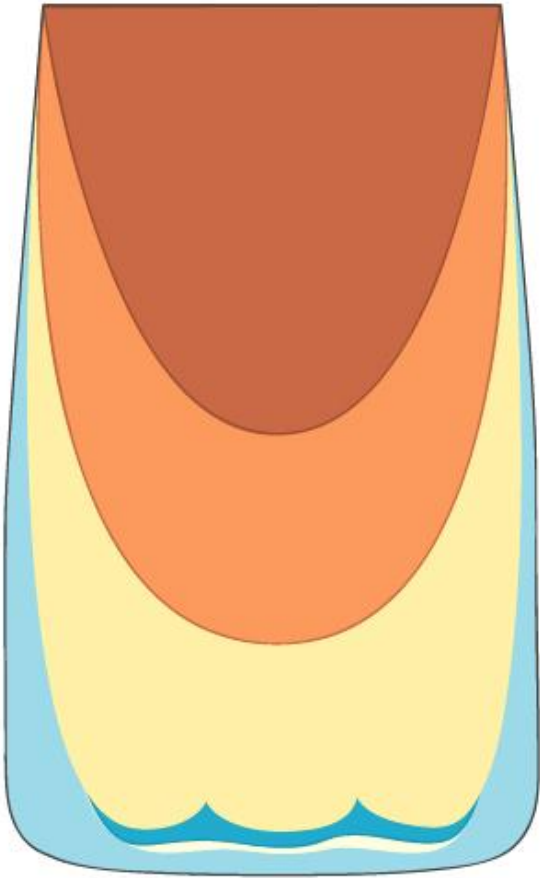


Surface texture

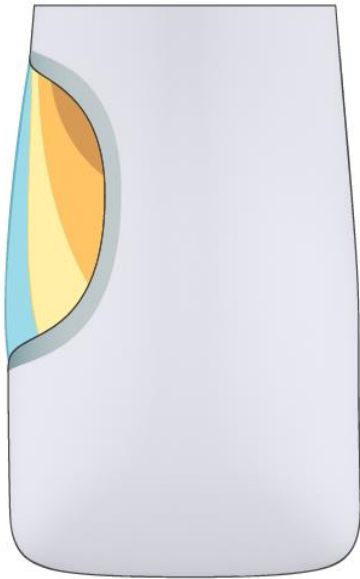
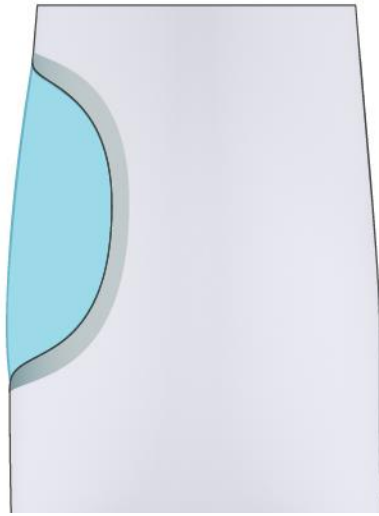








Stratification



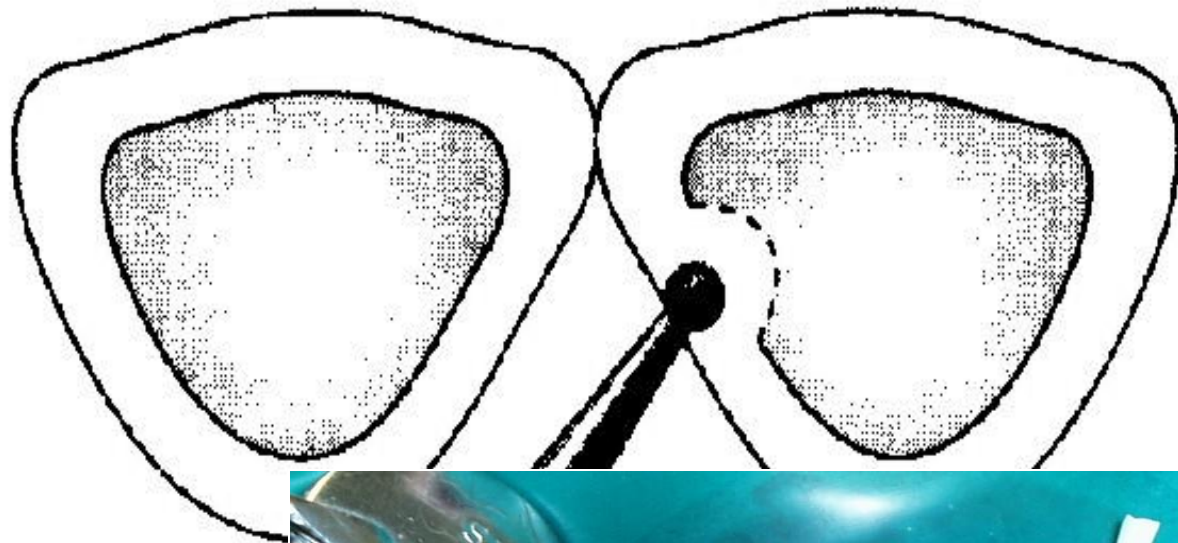


Cleaning



Preparation





Acid etching, protection of neighboring tooth



Matrix and wedge



Laxering, polymerization



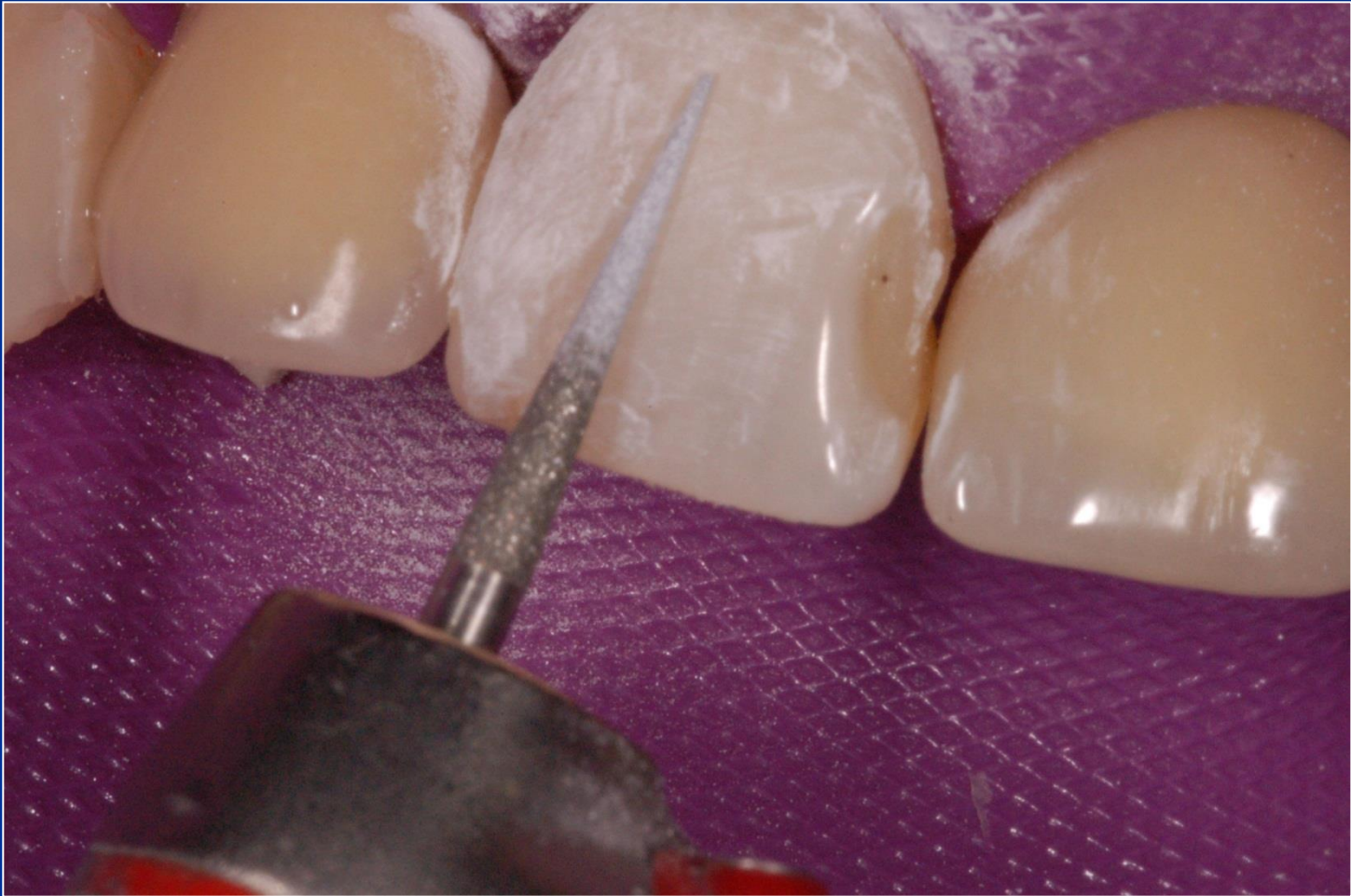
Layering, polymerization



Layering, polymerization



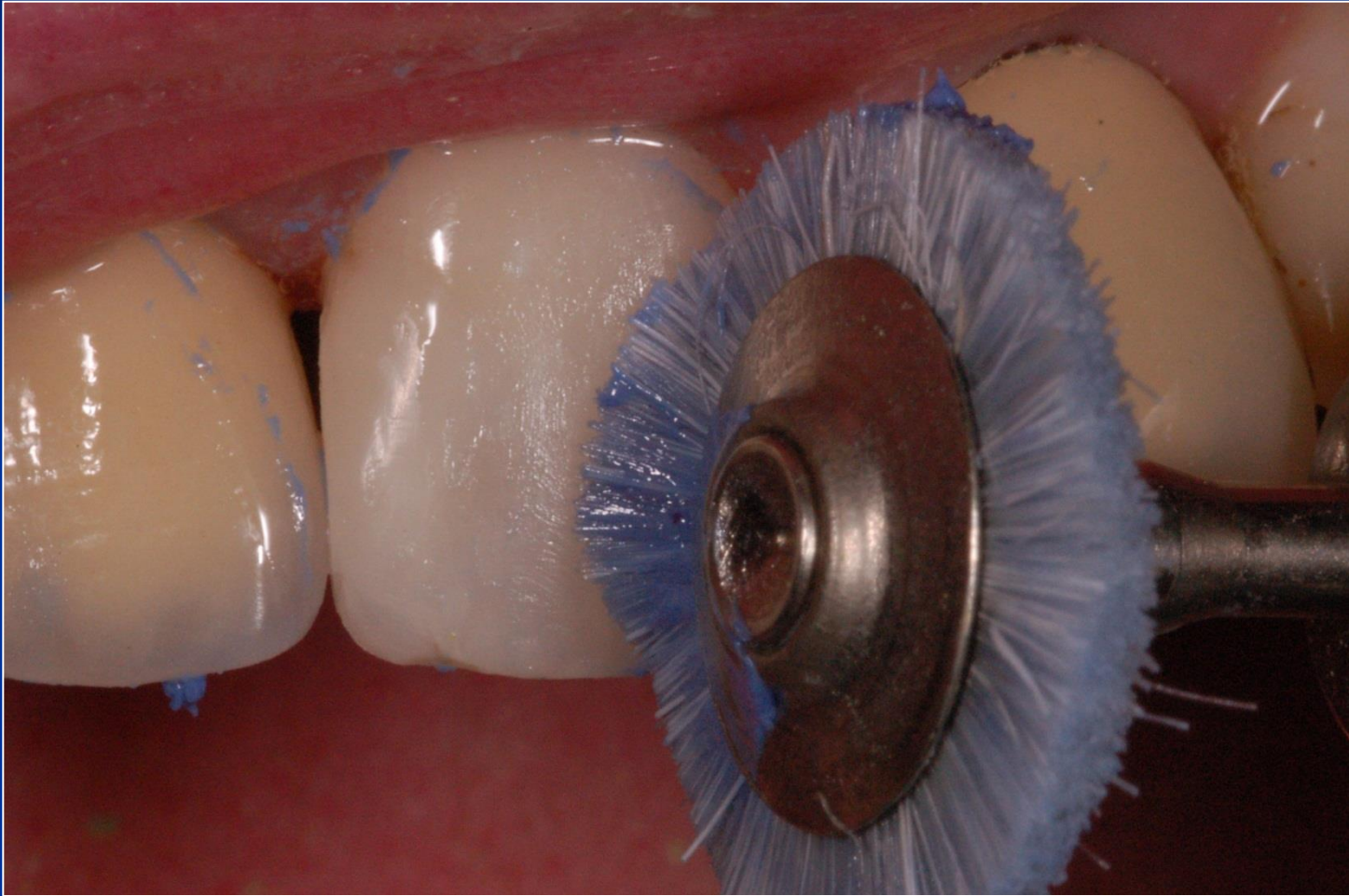
Finishing



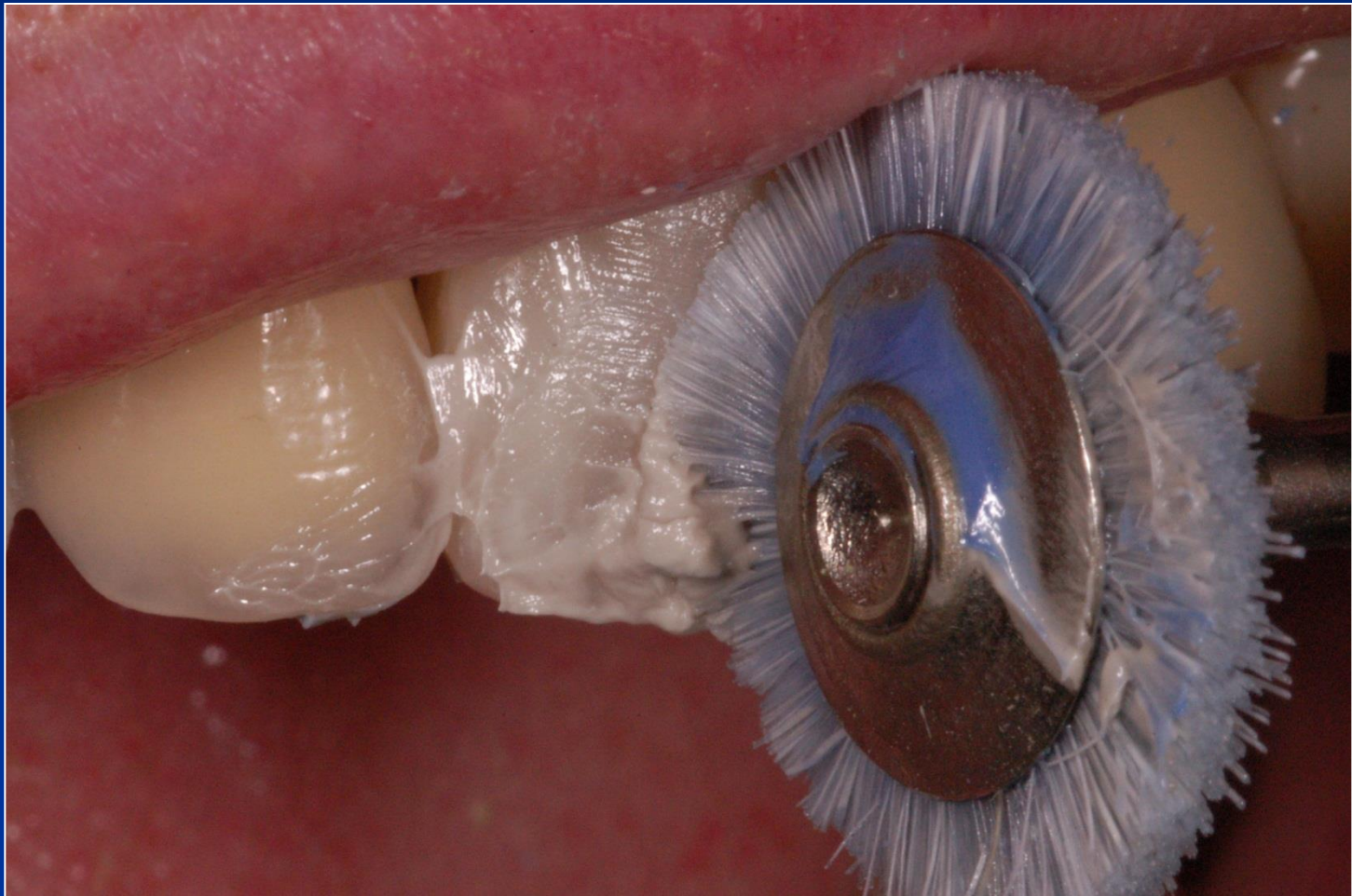
Polishing



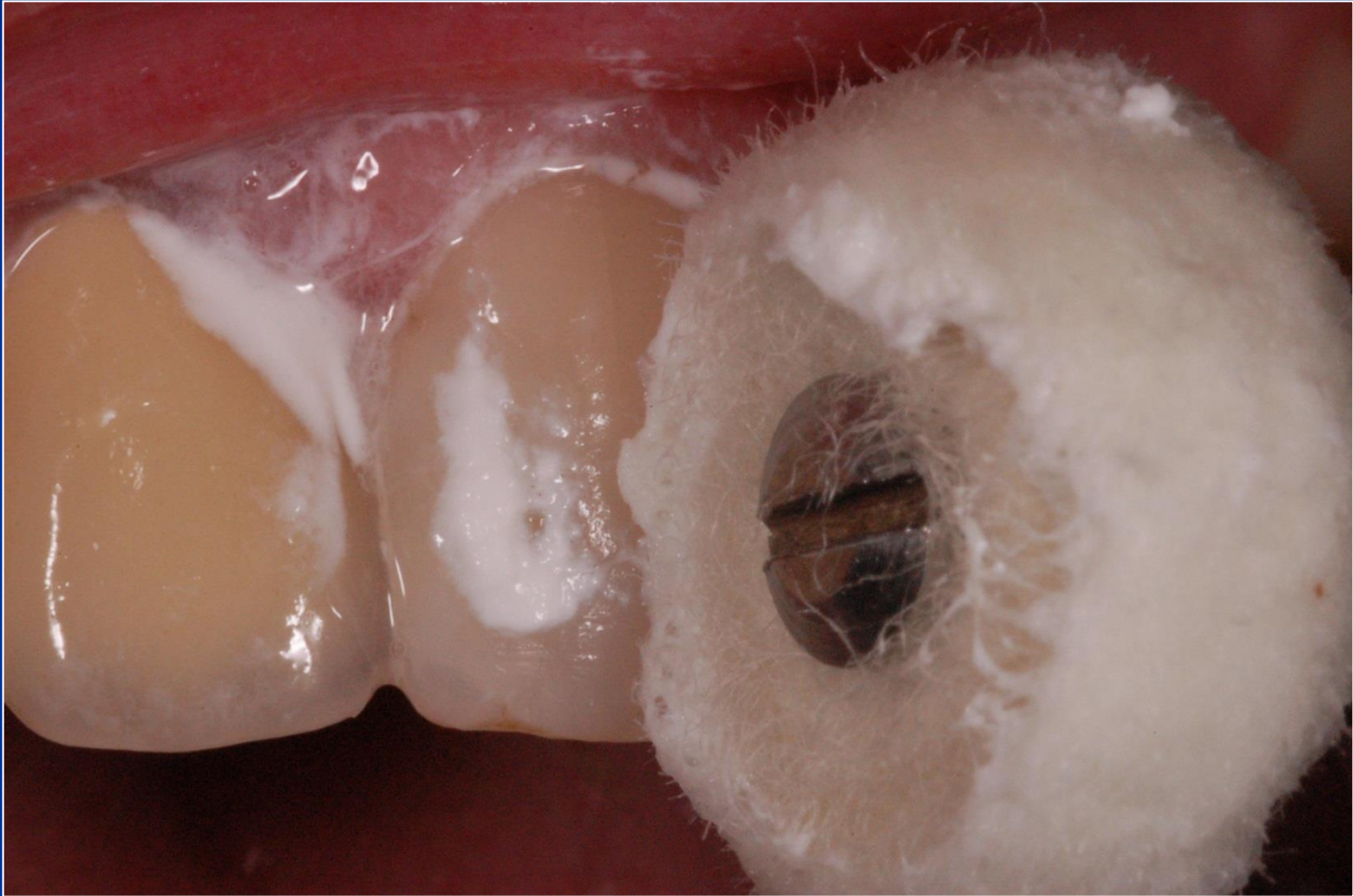
Polishing (brush, dia paste 3 μ m)



Polishing (brush, dia paste 1 μ m)



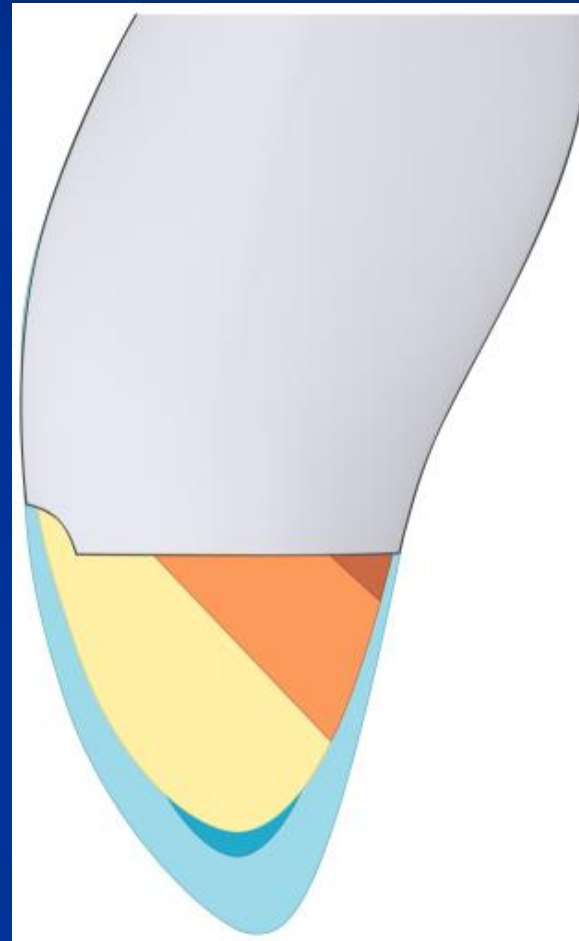
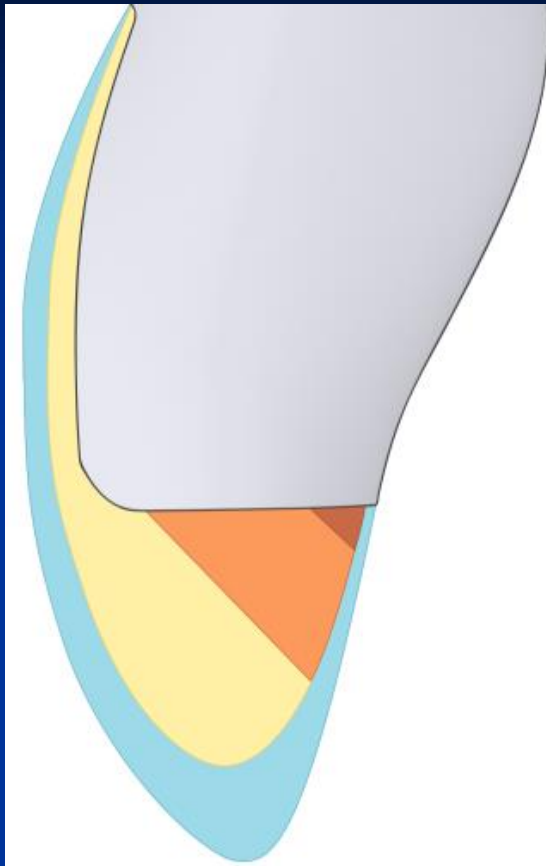
Polishing (felt disc)

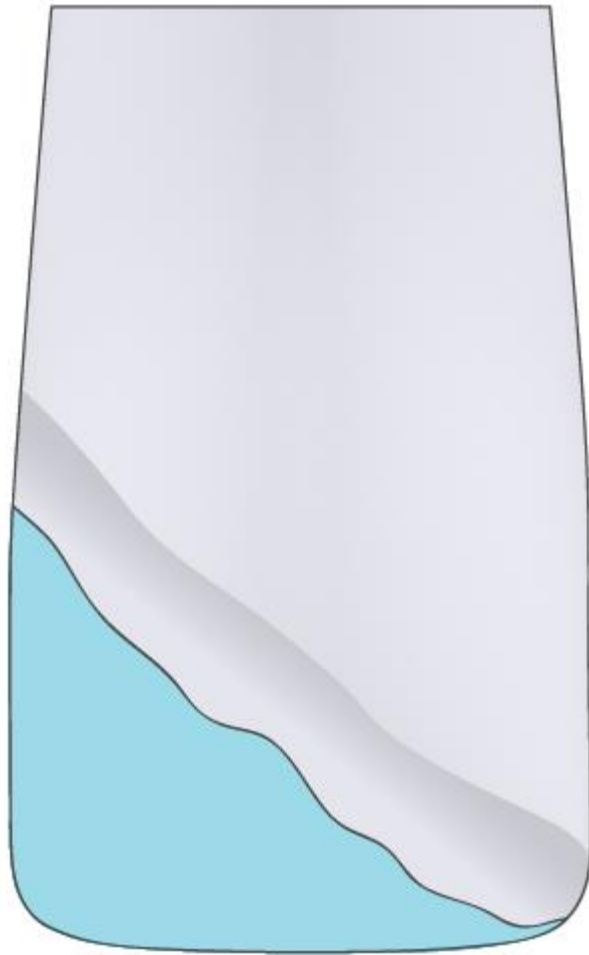


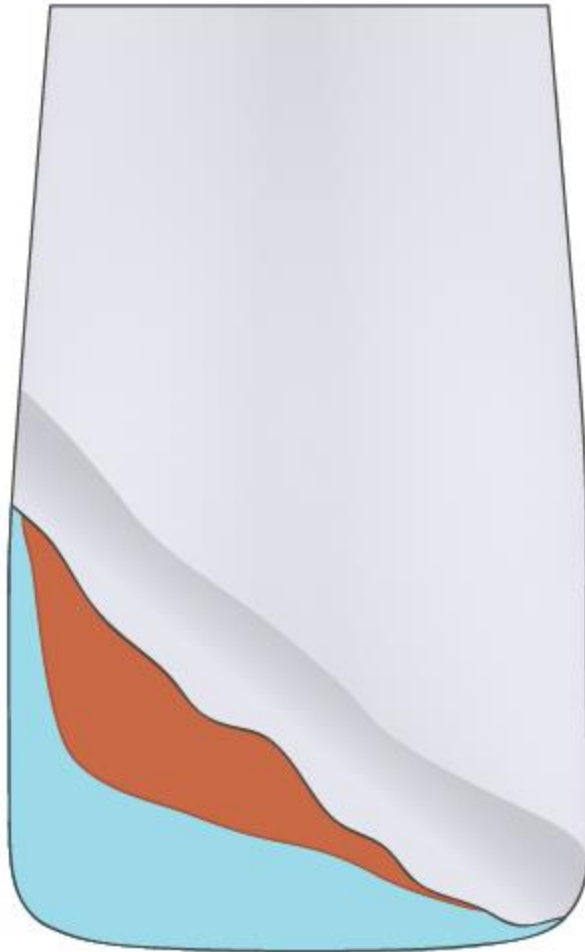


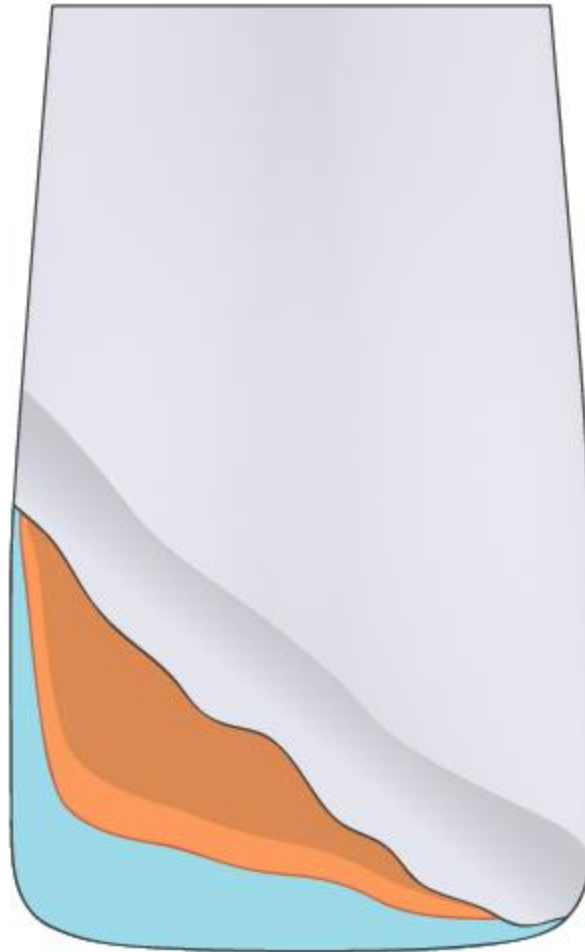


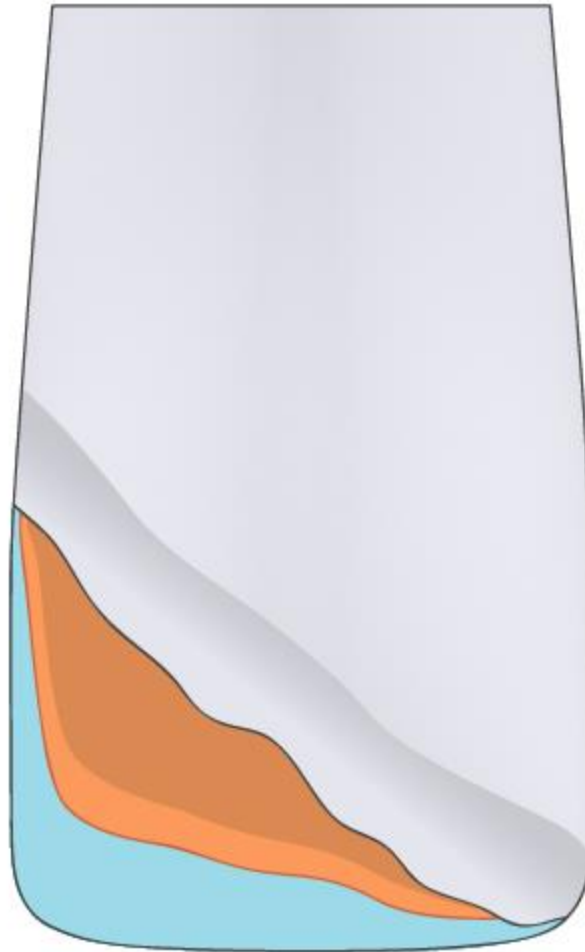




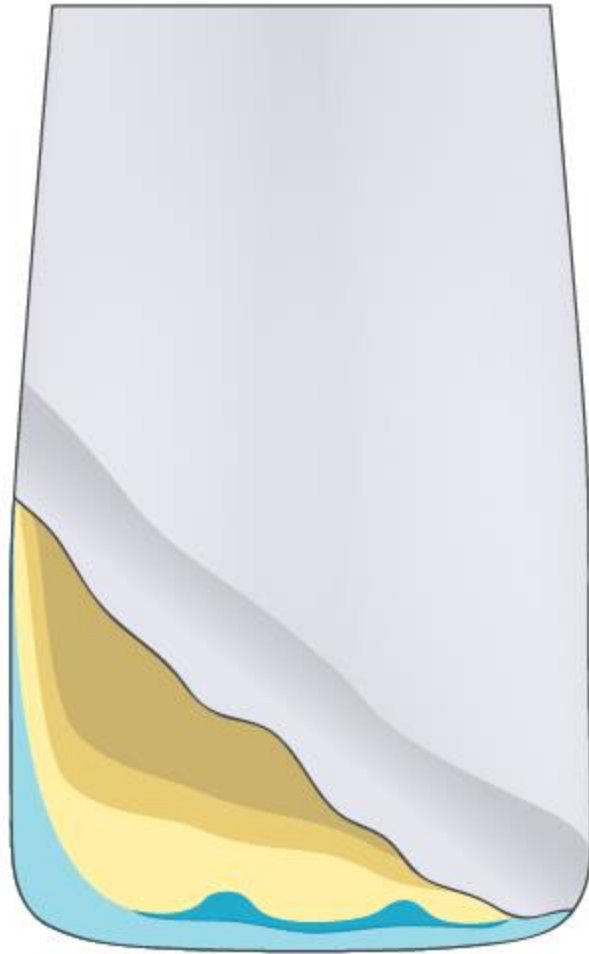














Silicone key

- Location of palatal surface and incisal edge
- Impression with silicone putty
- Can be done on model or in oral cavity

Wax up

Mock up).

Silicone key



Palatal wall



Incisal edge

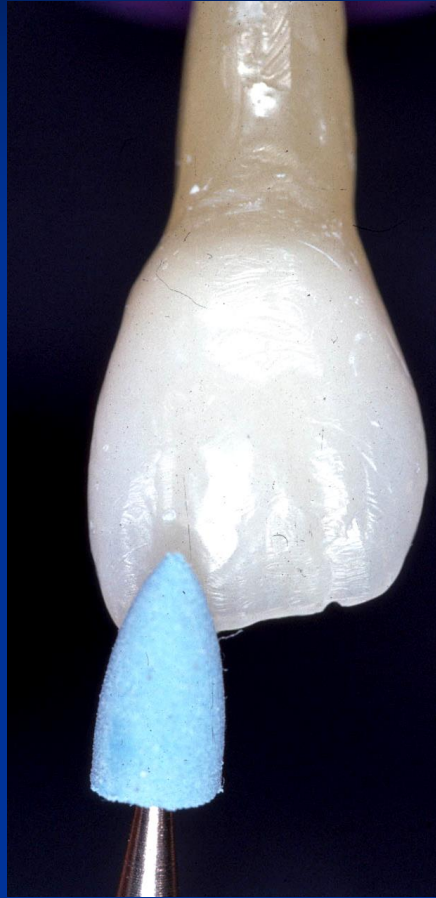




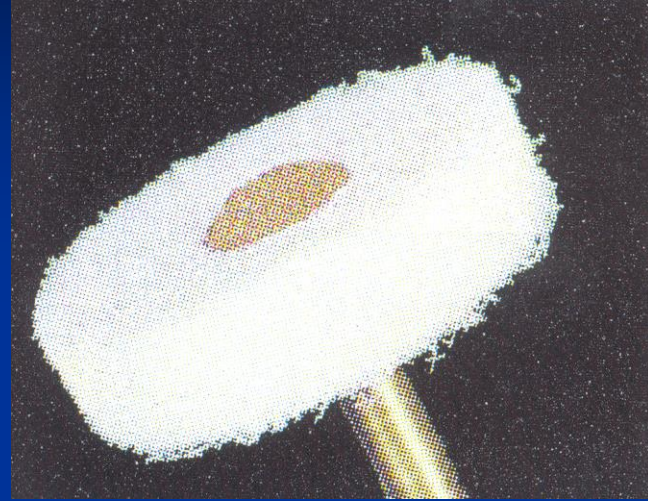
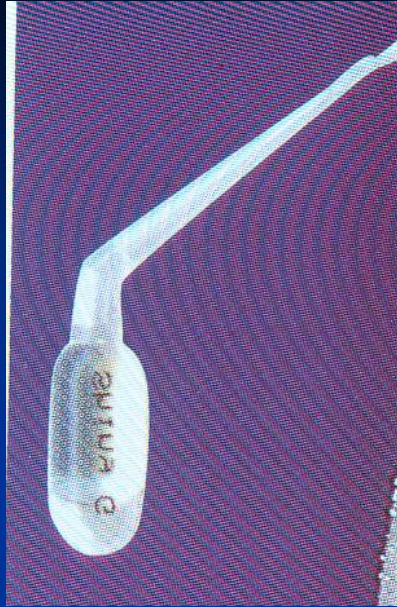


Matrices and finger method











Each bristle is a polishing instrument.

Special fibres with in-built silicon-carbide abrasive particles.

Not liable to confusion

Easily recognisable by the golden shaft.

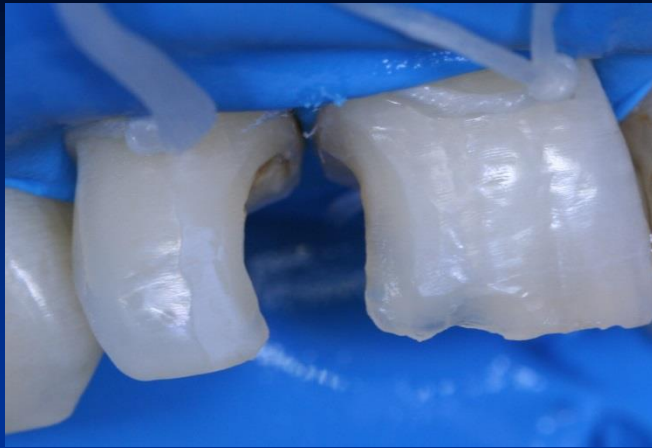


For oro/vestibulo - proximal surfaces -



One step polishing – various pressure





Indication for FRC post – if the tooth is non vital



?