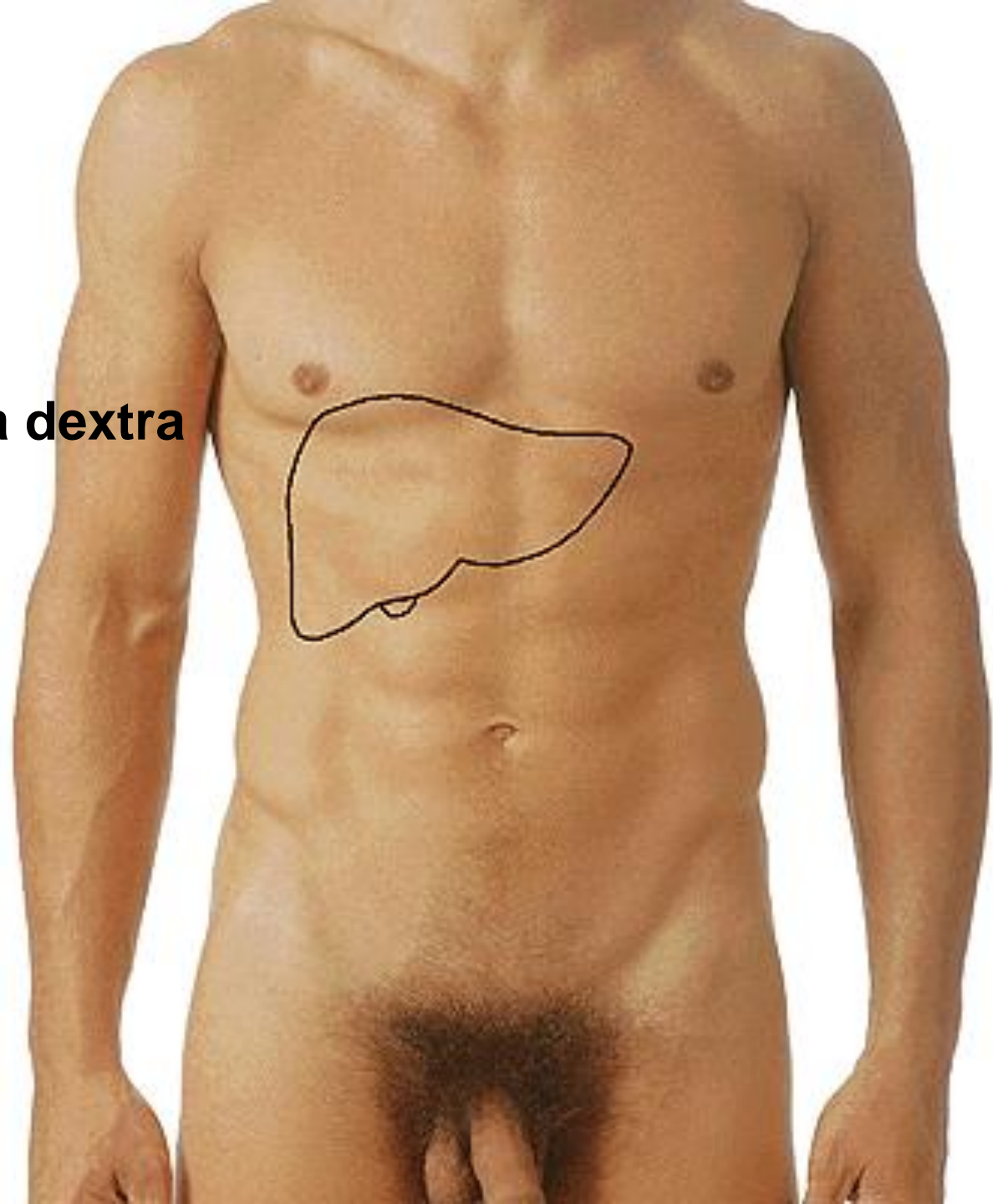


# DIGESTIVE SYSTEM II.

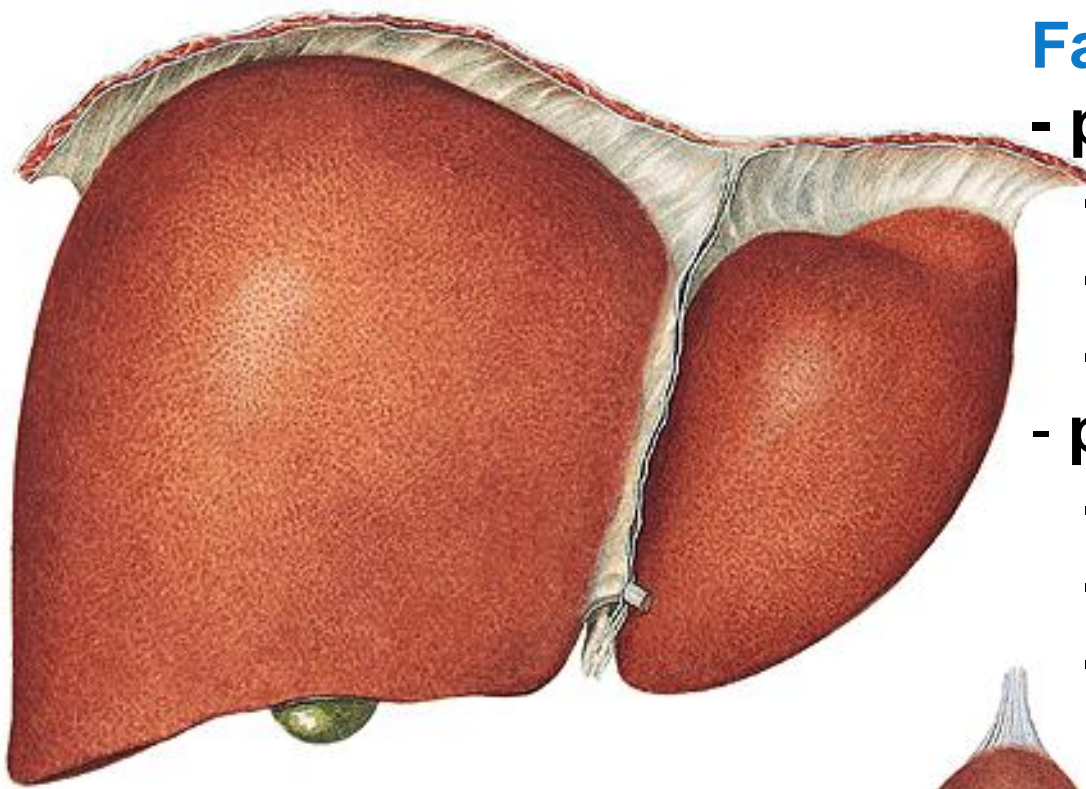
# HEPAR

Regio hypochondriaca dextra  
Regio epigastrica



## **Facies diaphragmatica**

- pars anterior
  - lig. falciforme hepatis
  - lobus dexter
  - lobus sinister
- pars superior (area nuda)
  - lig. coronarium
  - lig. triangulare dextrum
  - lig. triangulare sinistrum

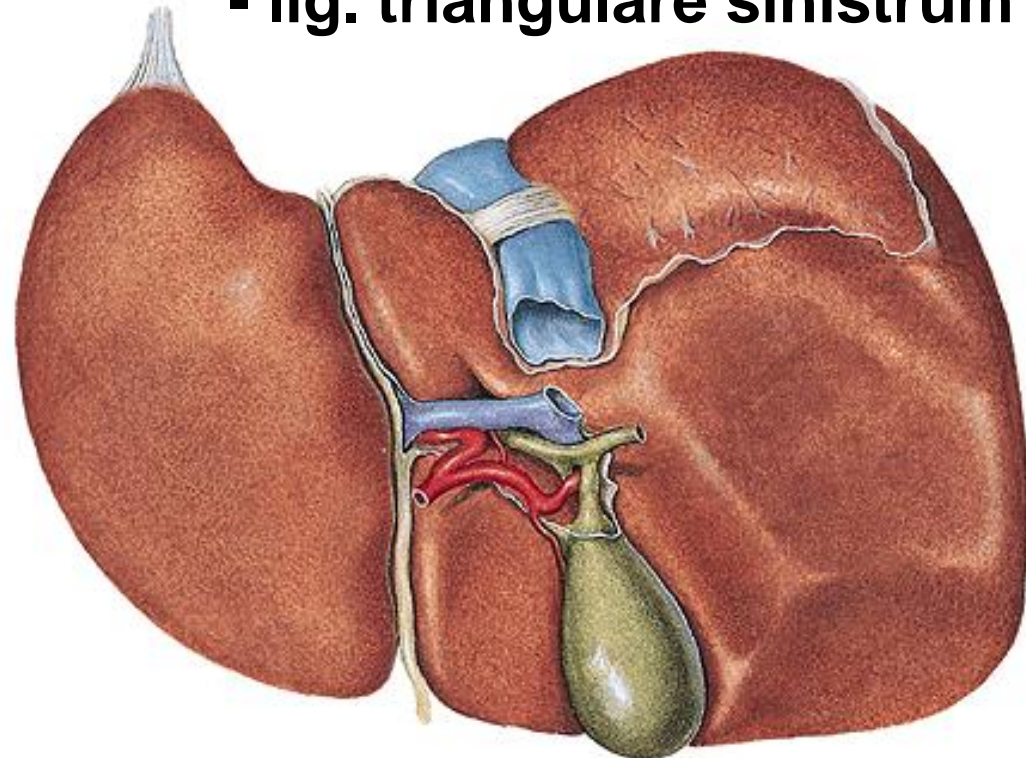


## **Facies visceralis**

**Fissura ligamenti teretis**

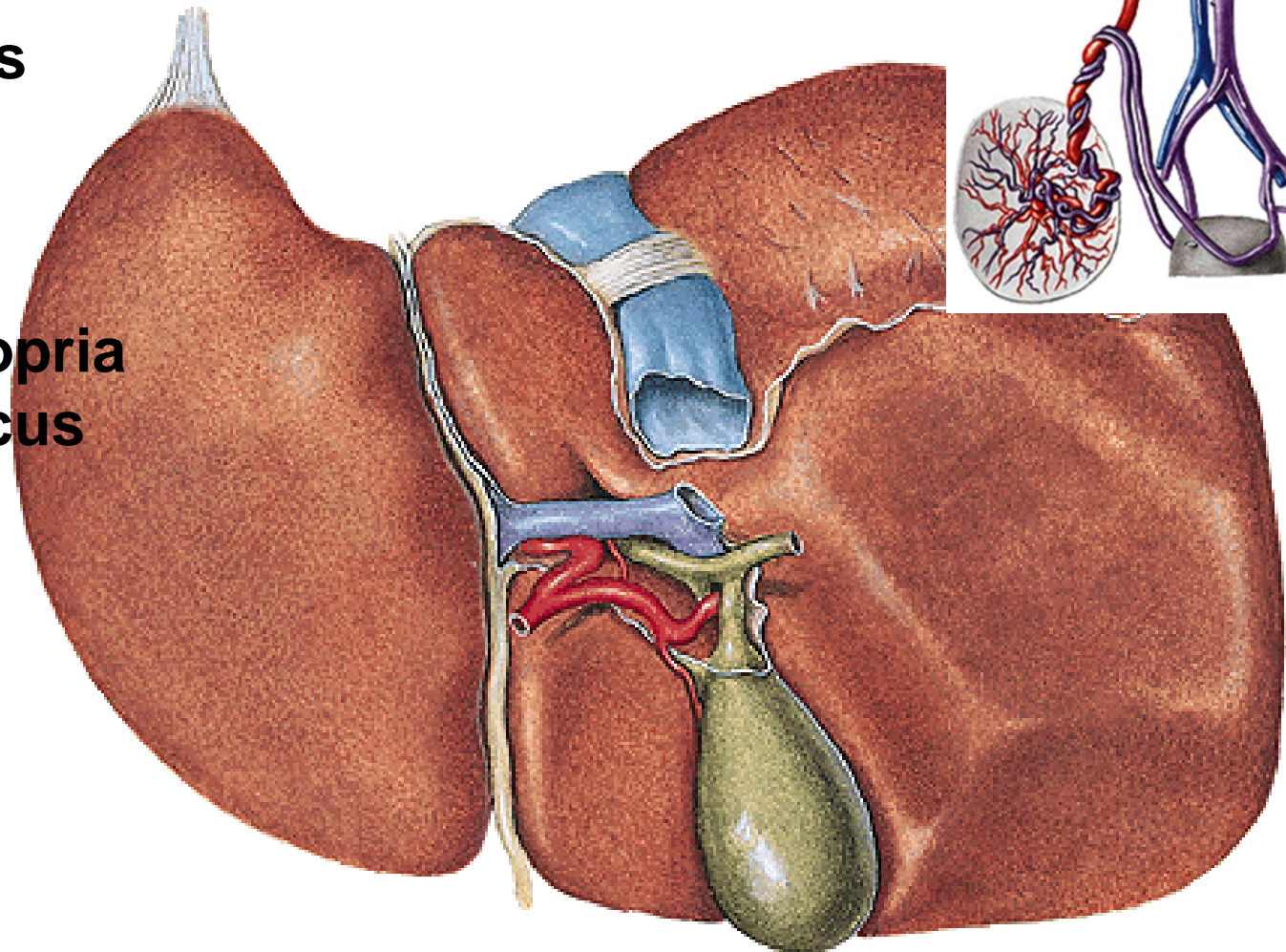
**(lig. teres hepatis)**

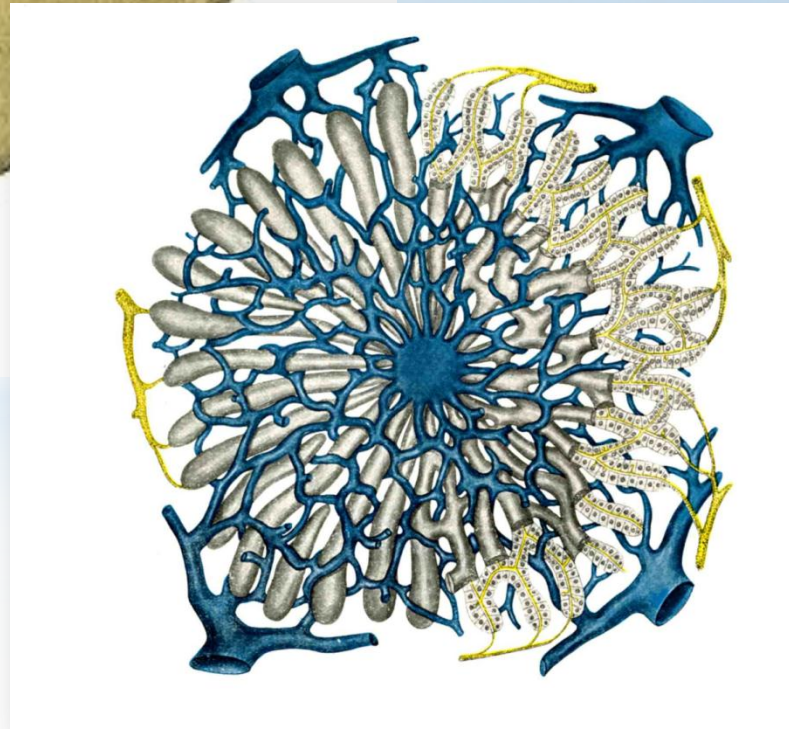
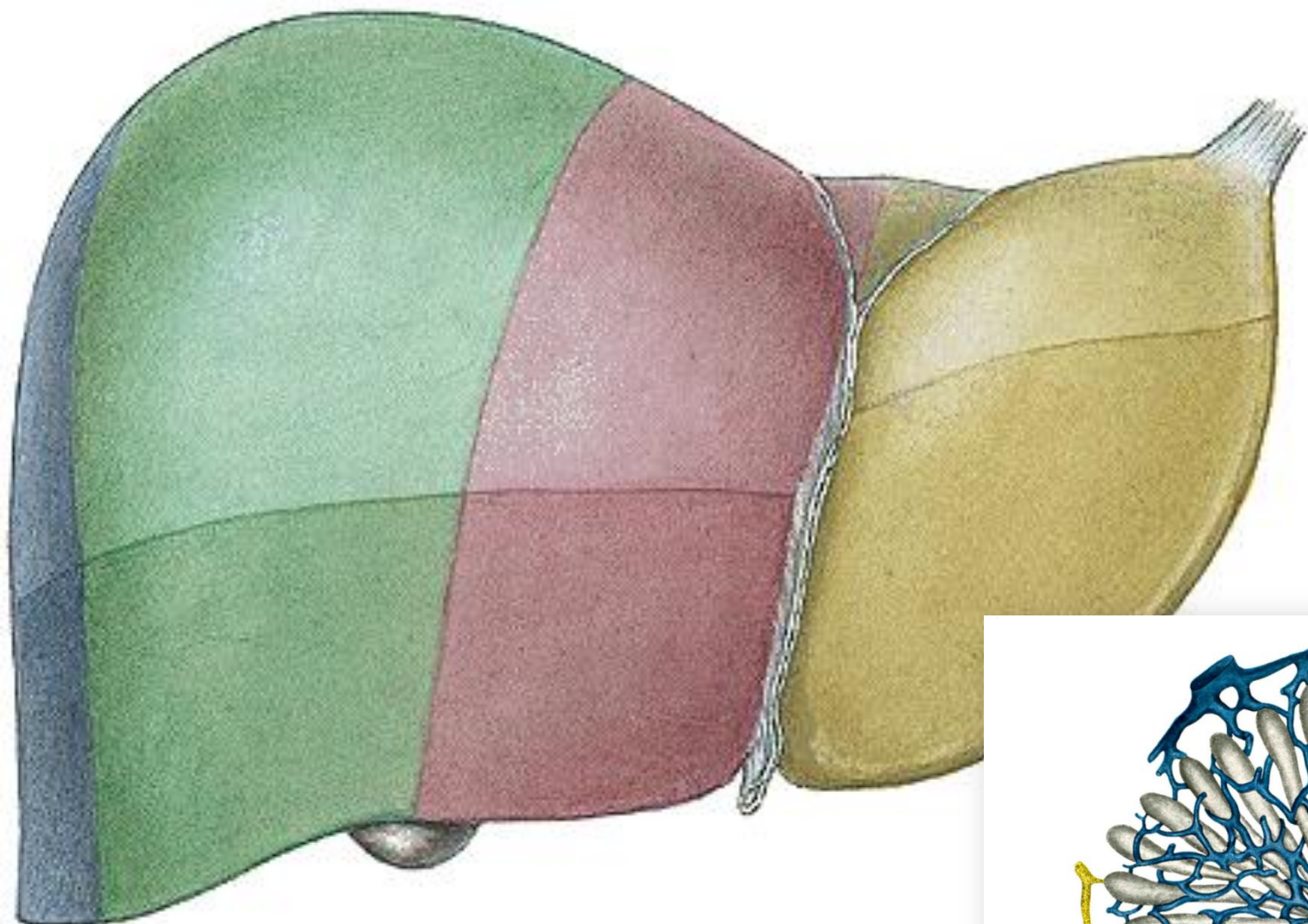
**Fissura ligamenti venosi**

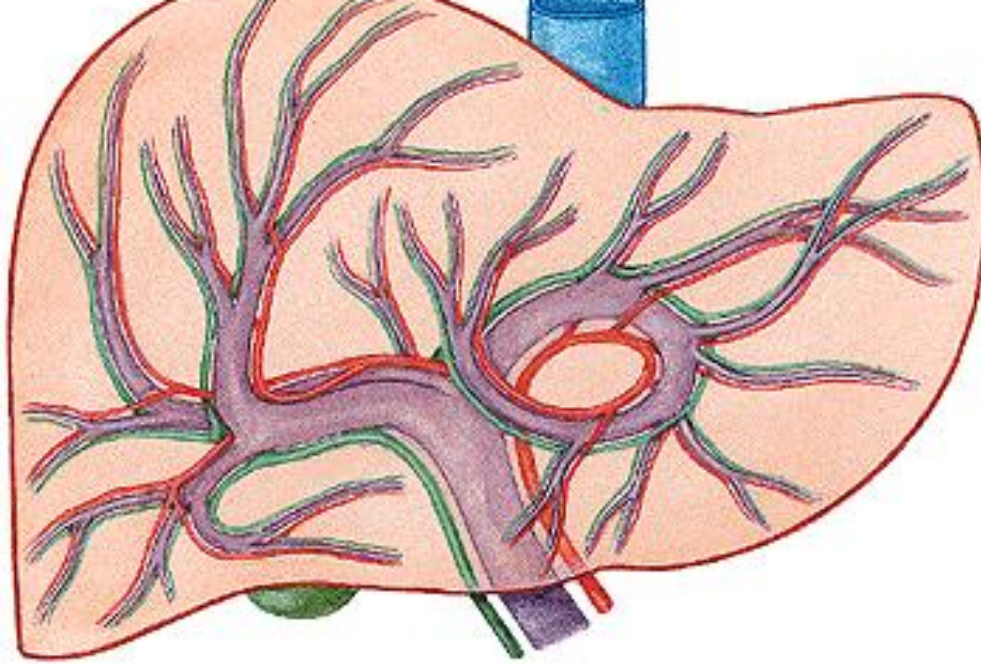


**Fossa vesicae biliaris**  
**Sulcus venae cavae**  
**Lobus dexter**  
**sinister**  
**caudatus**  
**quadratus**

**Porta hepatis**  
**- vena portae**  
**- a. hepatica propria**  
**- ductus hepaticus**  
**communis**  
**(portal triad)**







## V. PORTAE

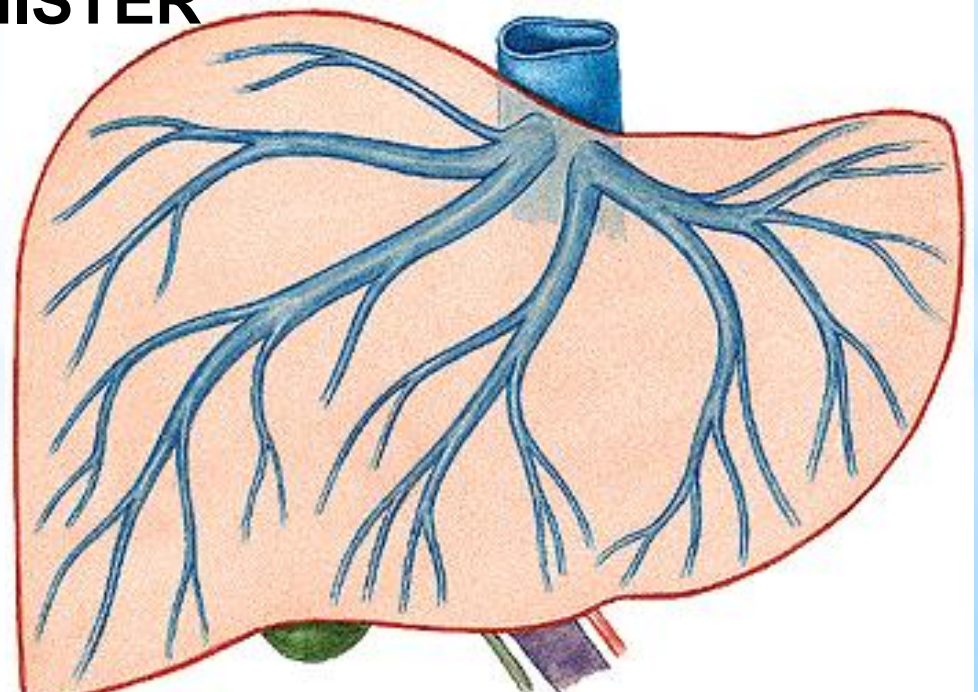
(v. mesenterica sup.  
+ v. lienalis)

## A. HEPATICA PROPRIA

- a. hepatica communis

→ RAMUS DEXTER ET SINISTER

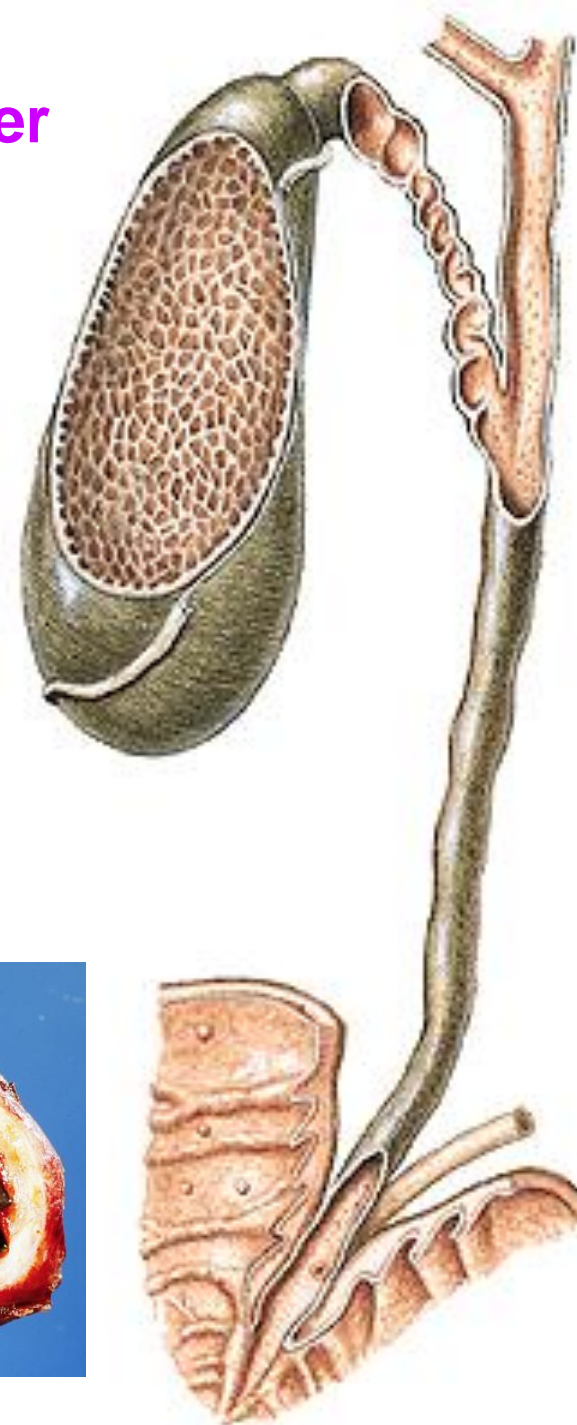
→ VV. HEPATICAE

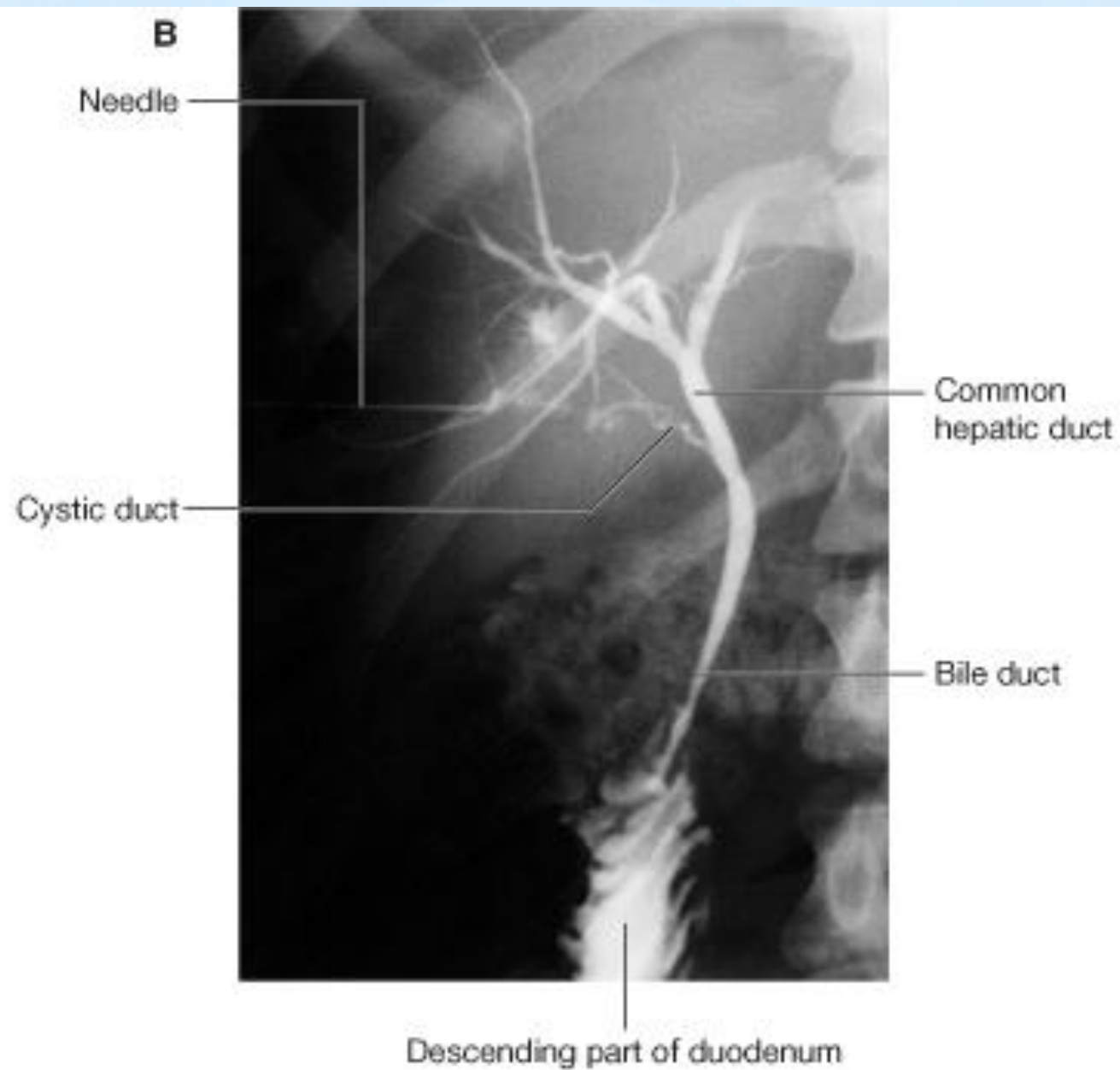


**Intrahepatic ducts** → **ductus hepaticus dexter et sinister** – **ductus hepaticus communis** + **ductus cysticus** = **ductus choledochus**

**Ampulla hepatopancreatica**  
**M. sphincter ampullae (Oddi)**  
**Papilla duodeni major (Vater)**  
**(Plica longitudinalis duodeni)**

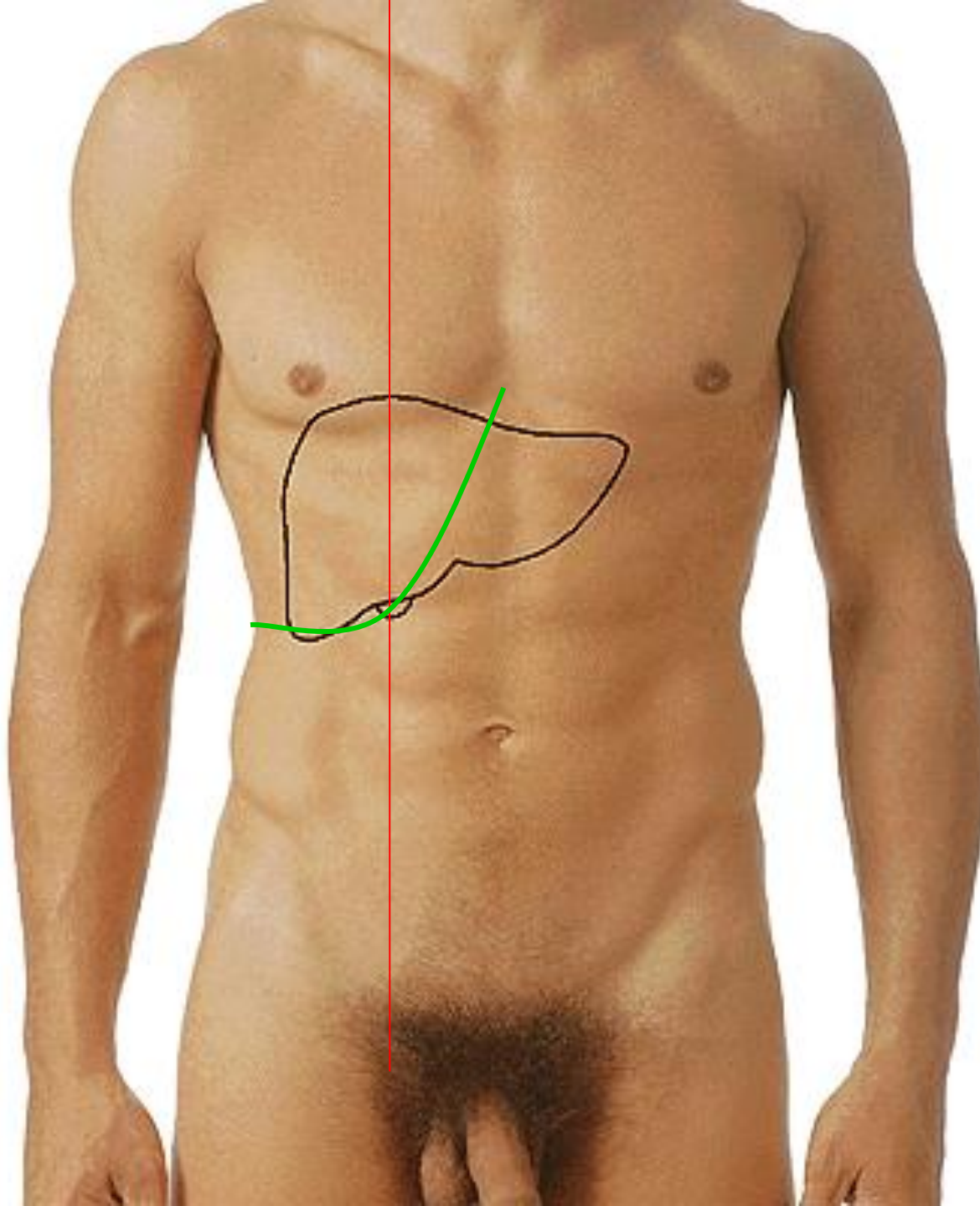
**Vesica biliaris (fellea)**  
- fundus, corpus, infundibulum, collum  
- ductus cysticus (plica spiralis)



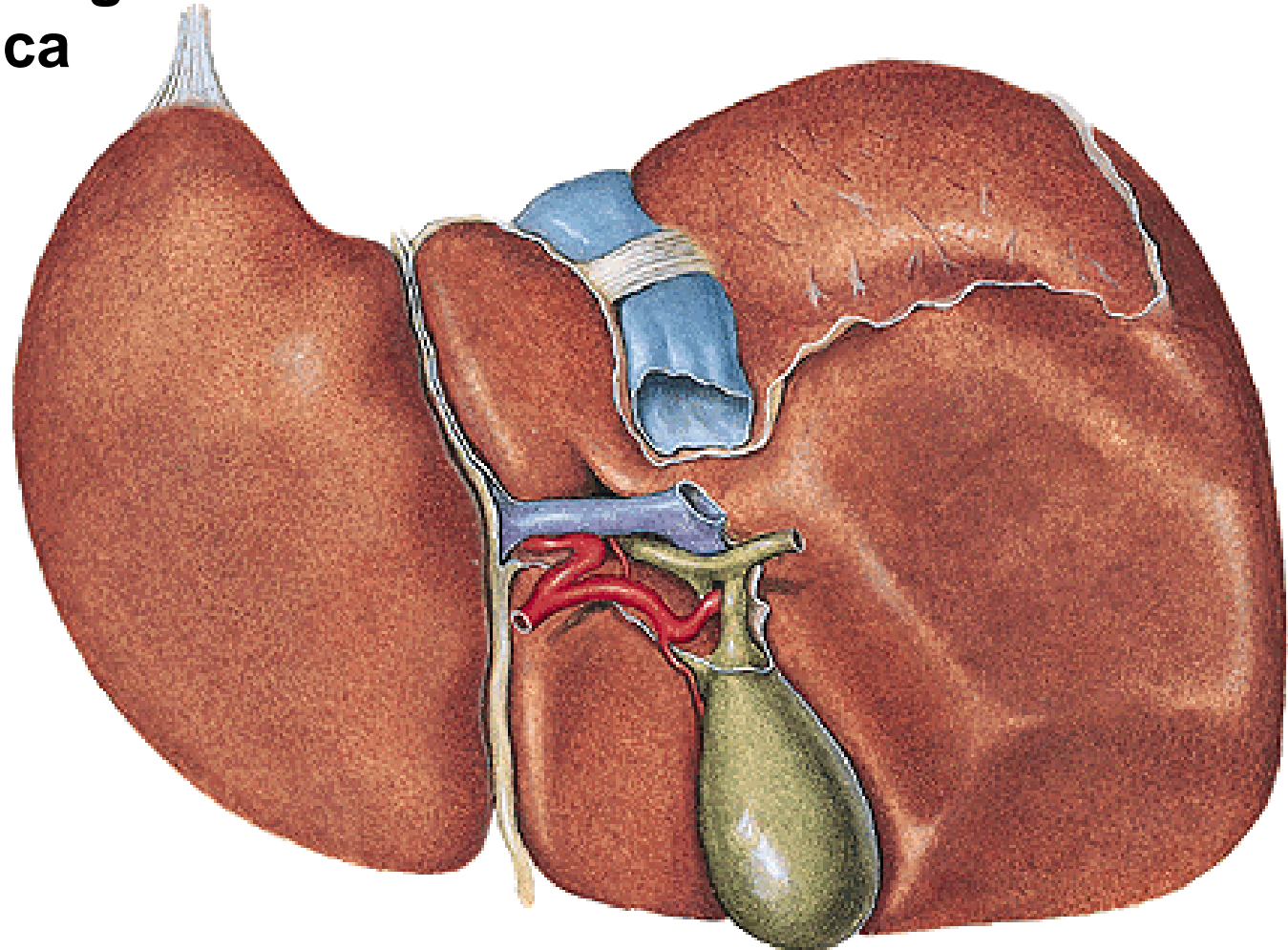




# Murphy's point

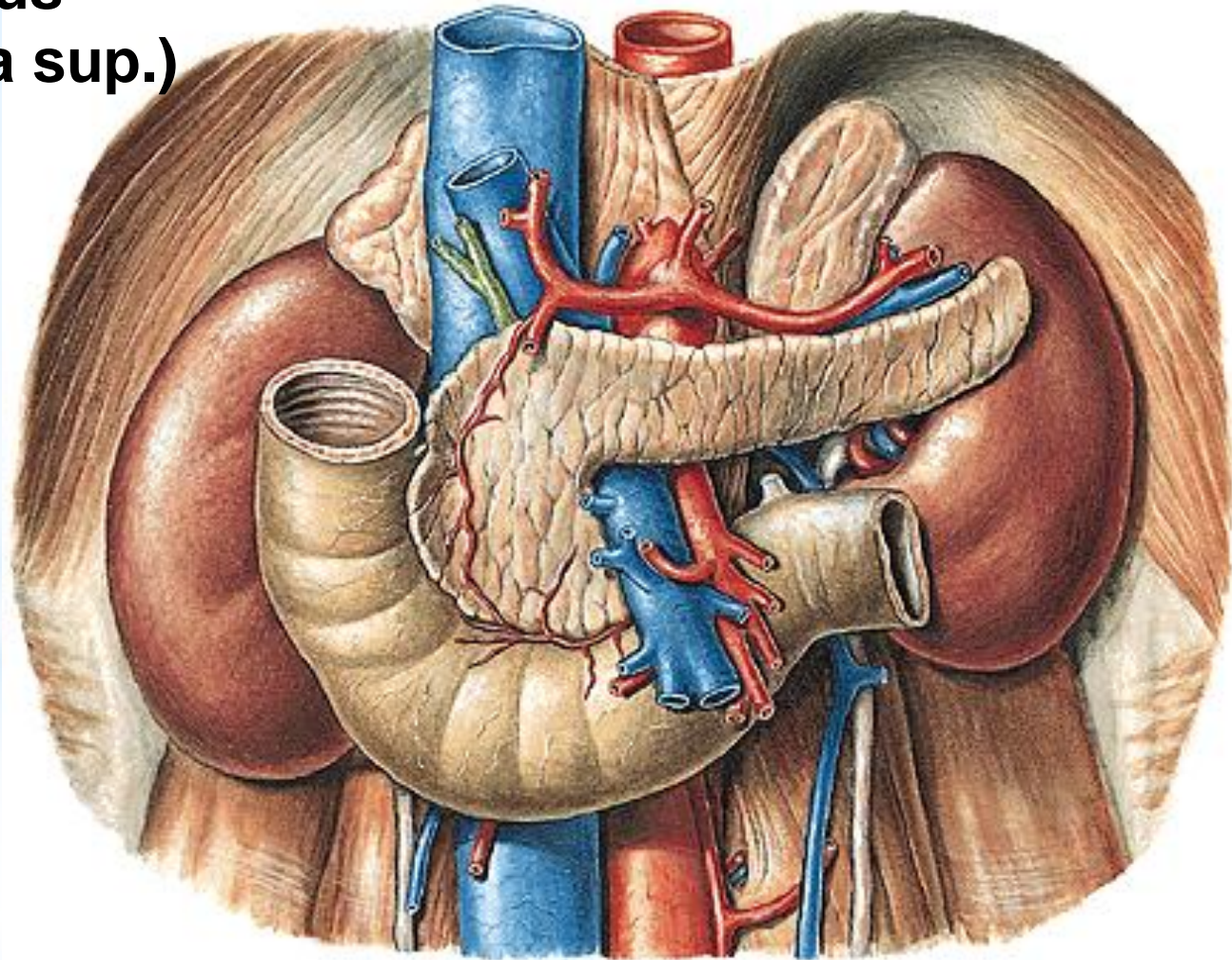
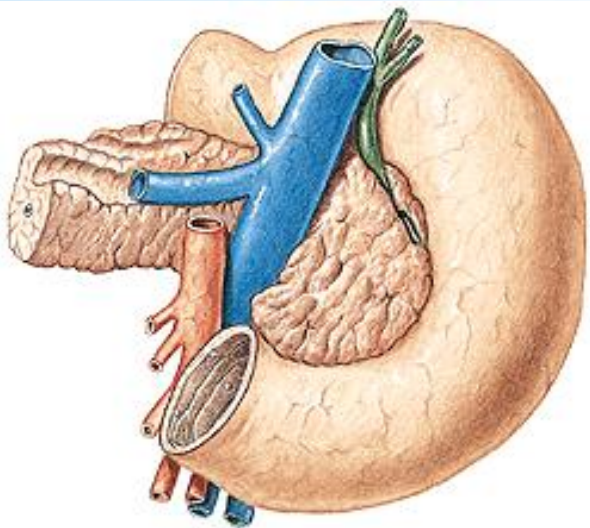


**Impressio renalis**  
**Impressio suprarenalis**  
**Impressio colica**  
**Impressio duodeni**  
**Impressio oesophagea**  
**Impressio gastrica**



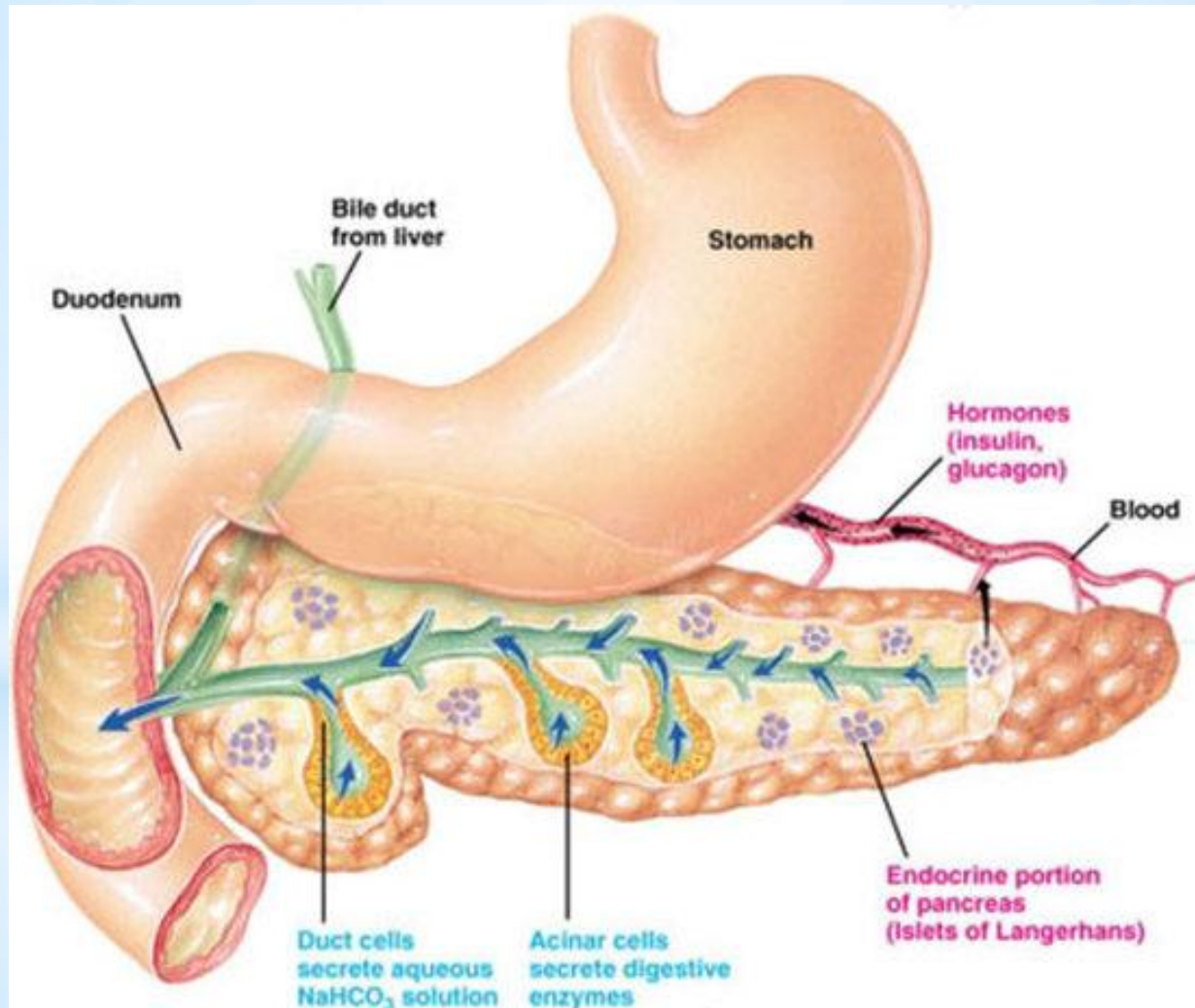
# PANCREAS

**Caput, collum, corpus, cauda,  
incisura pancreatis,  
processus uncinatus  
(a. et v. mesenterica sup.)**



**Exocrine pancreas:**  
**ductus pancreaticus**  
**ductus pancreaticus accessorius**  
**succus pancreaticus**

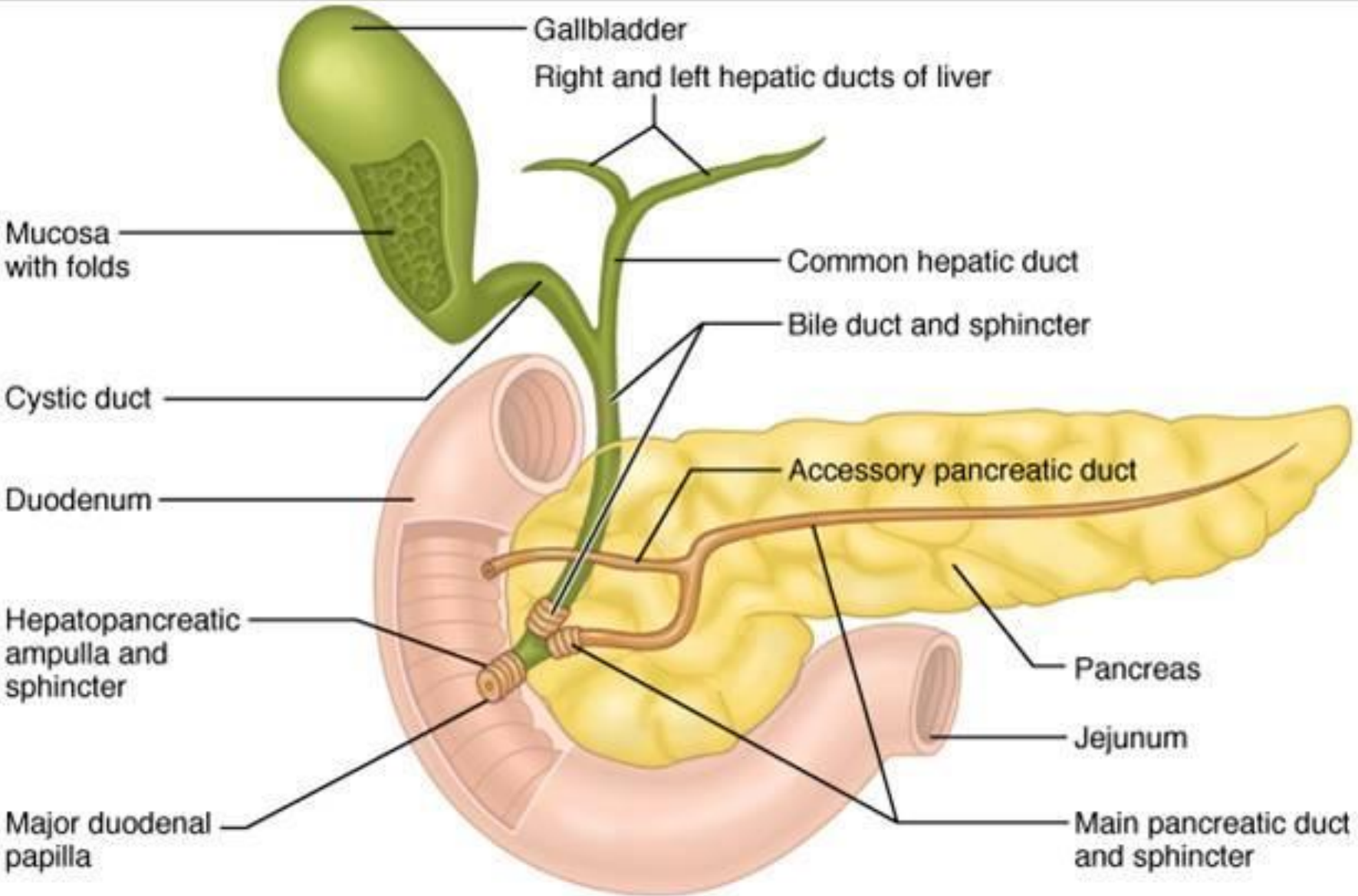
**Endocrine pancreas:**  
**insulae pancreaticae**  
**(islets of Langerhans**  
**0.1-0.5 mm in diameter )**  
**insulin, glucagon**



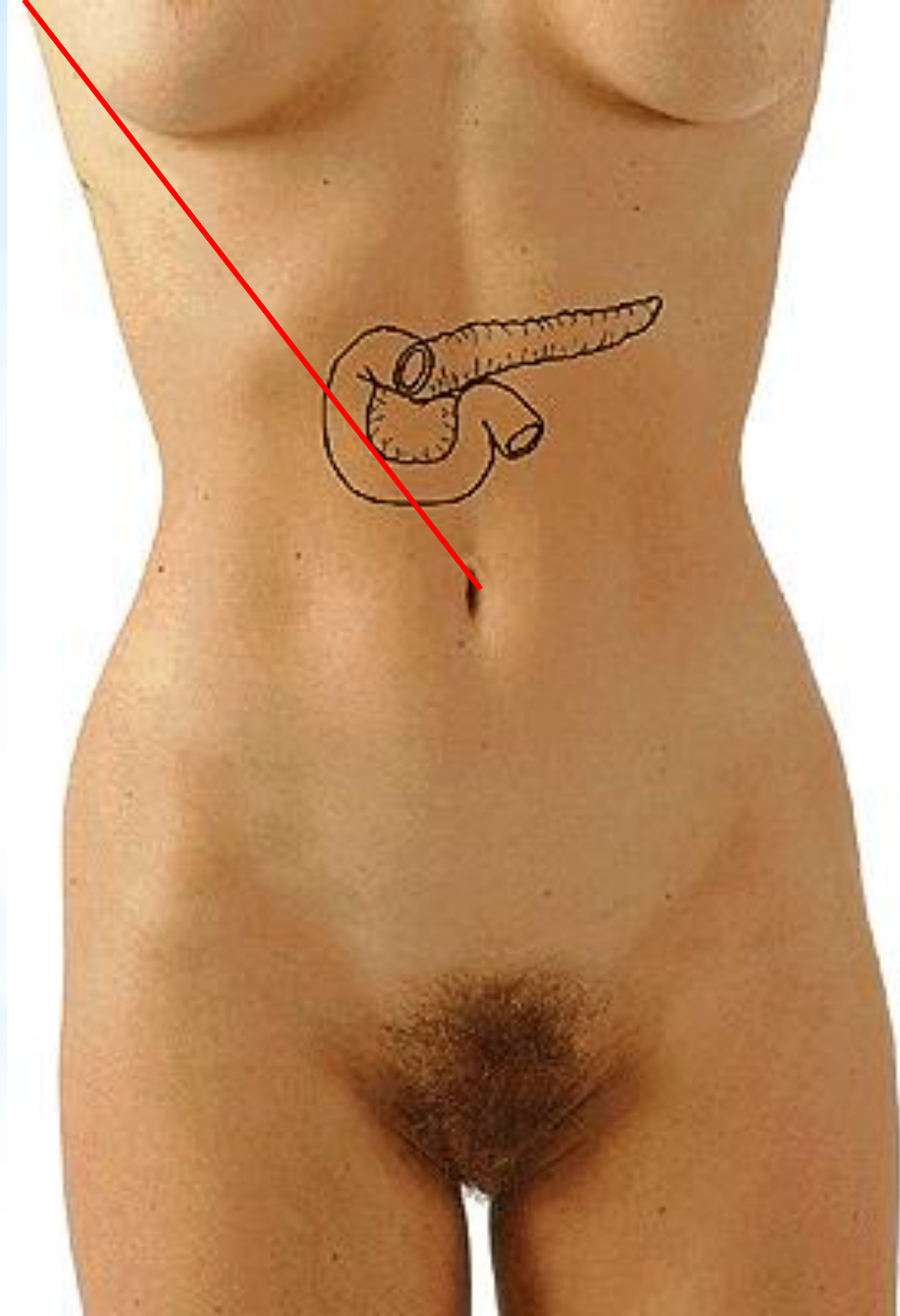
**M. sphincter ductus pancreatici**

**M. sphincter ductus choledochi**

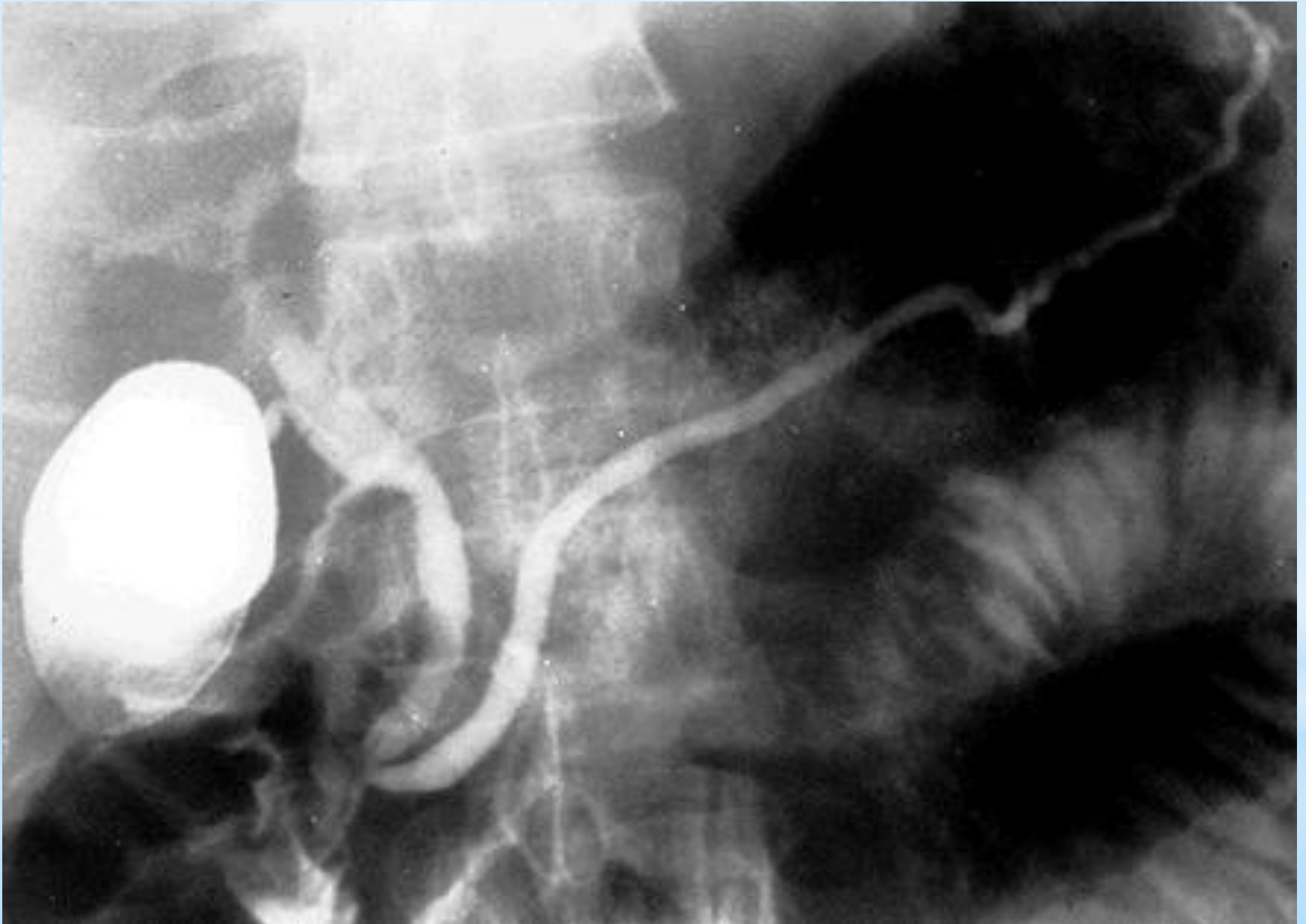
**M. sphincter ampullae hepatopancreaticae**



**Umbilico-axillary line**  
**- point of Desjardin**

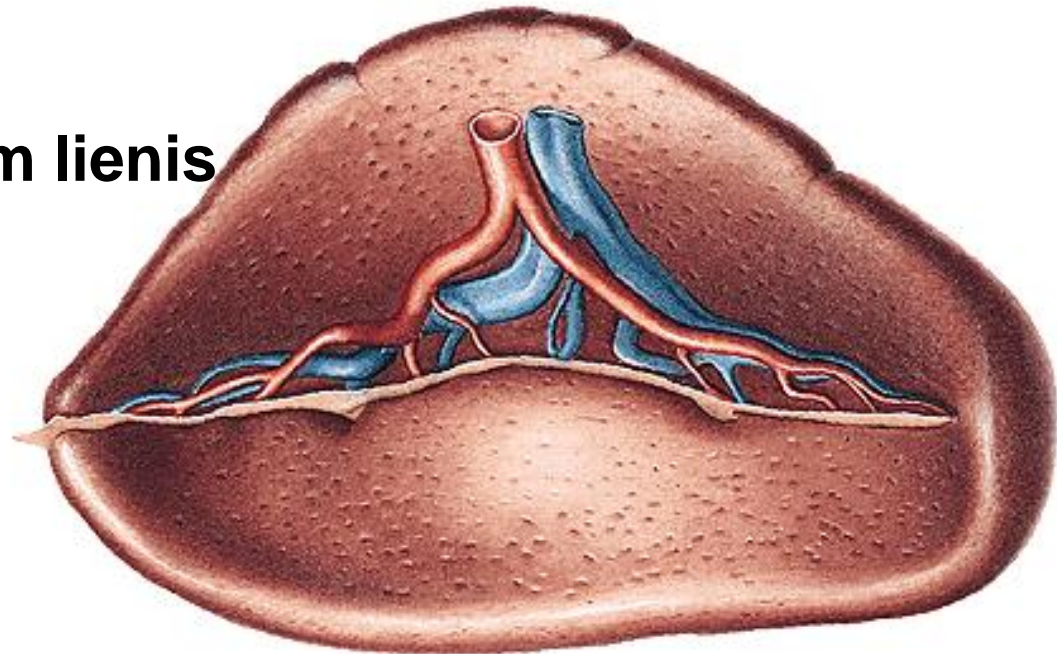


# ERCP – endoscopic retrograde cholangio-pancreatography

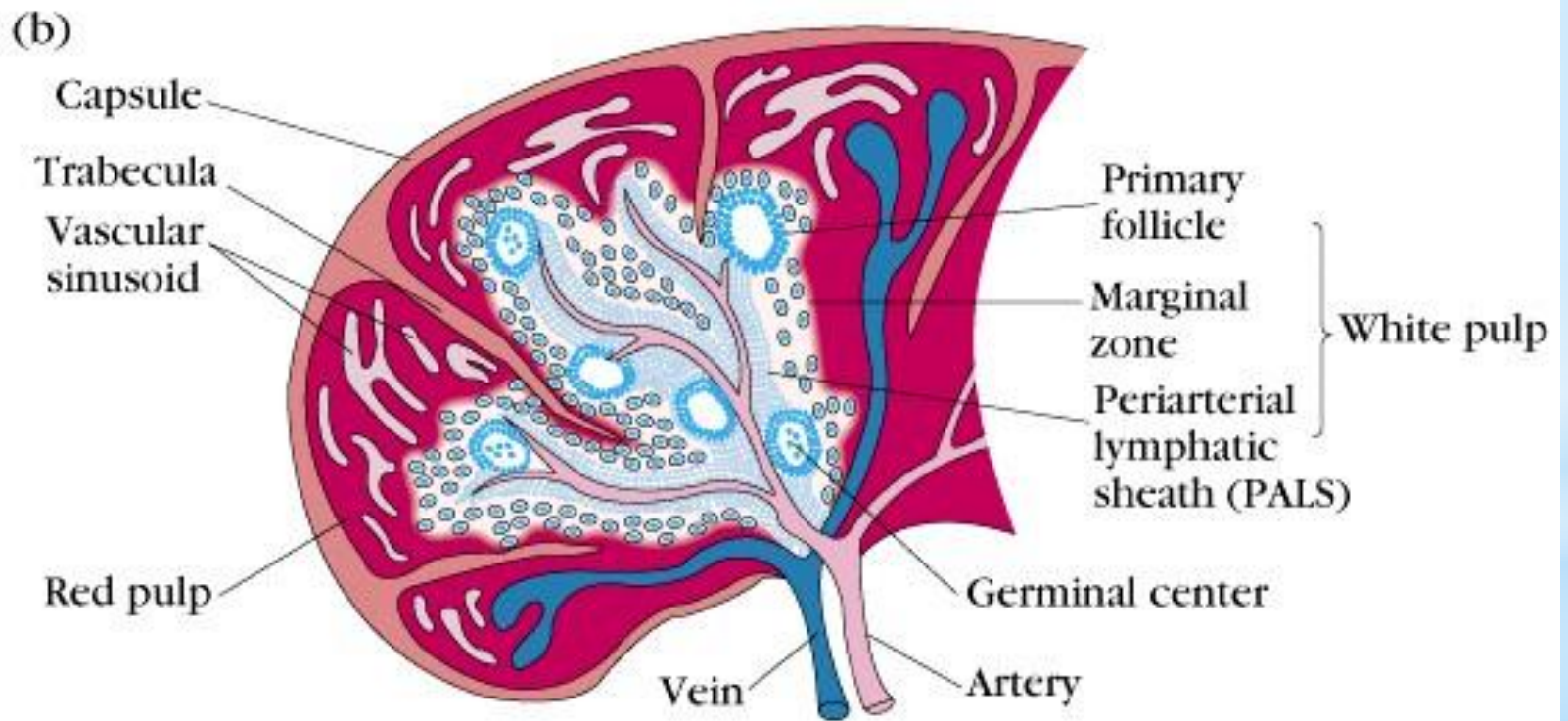
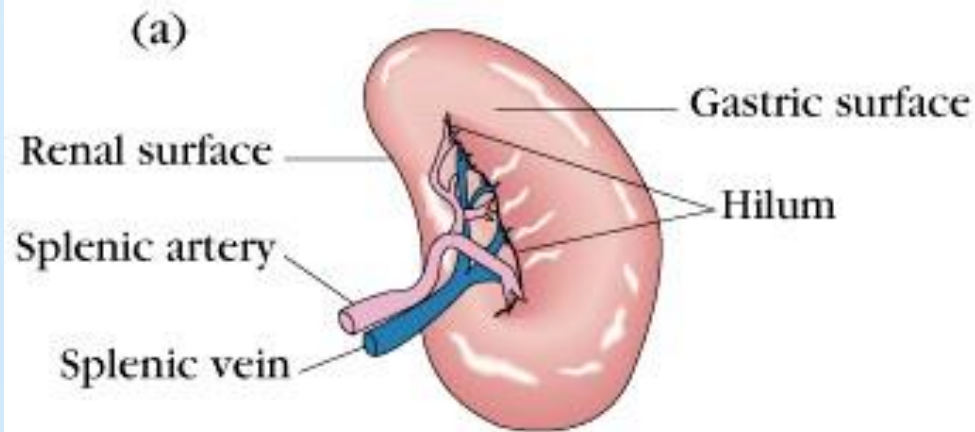


# LIEN, SPLEN

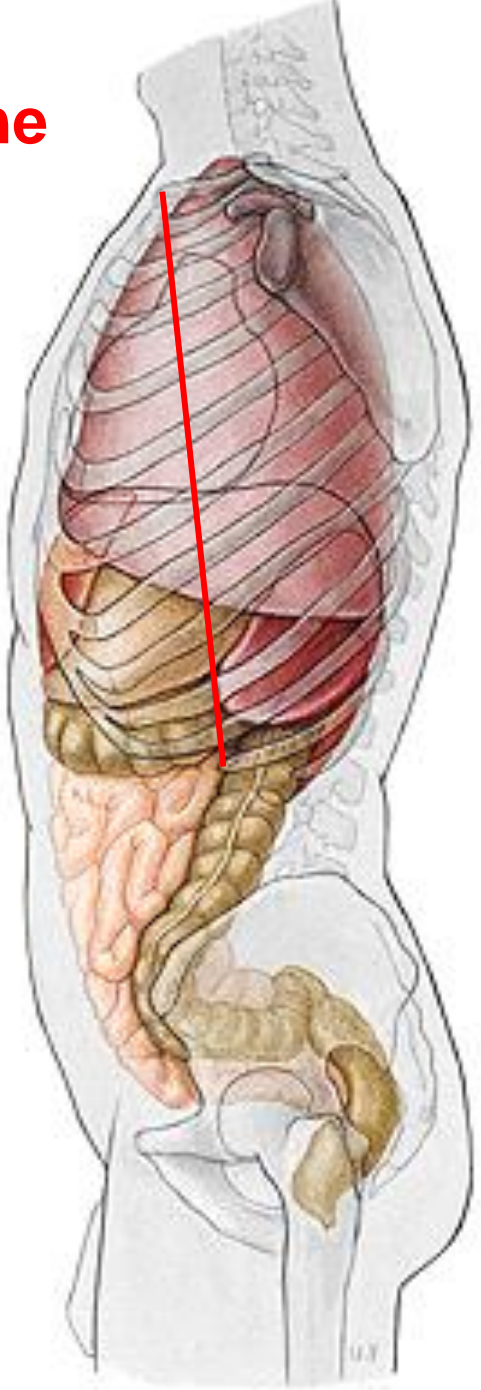
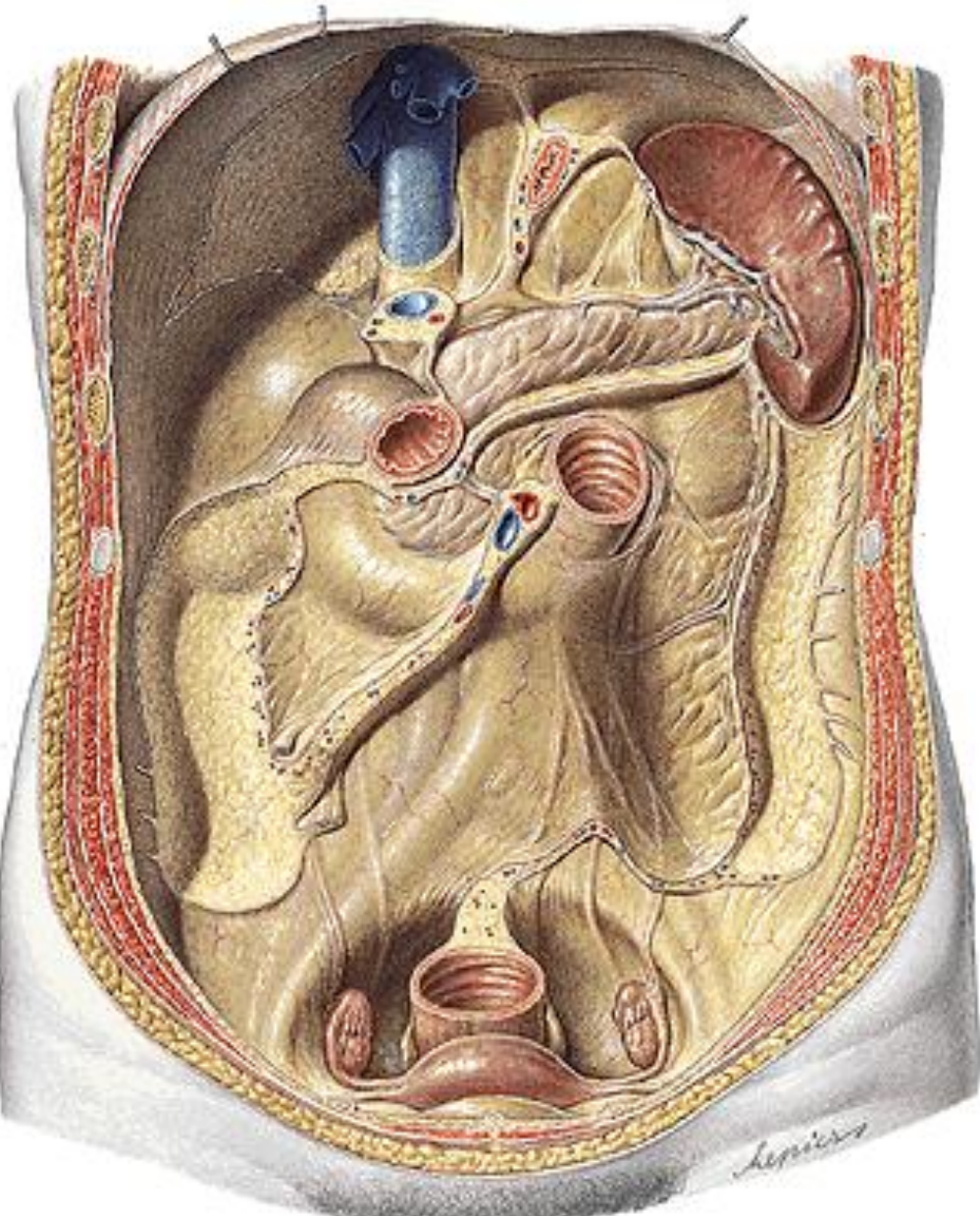
- extremitas anterior
- extremitas posterior
- margo superior – crenae lienis
- margo inferior
- facies diaphragmatica
- facies visceralis – hilum lienis
- capsula lienis





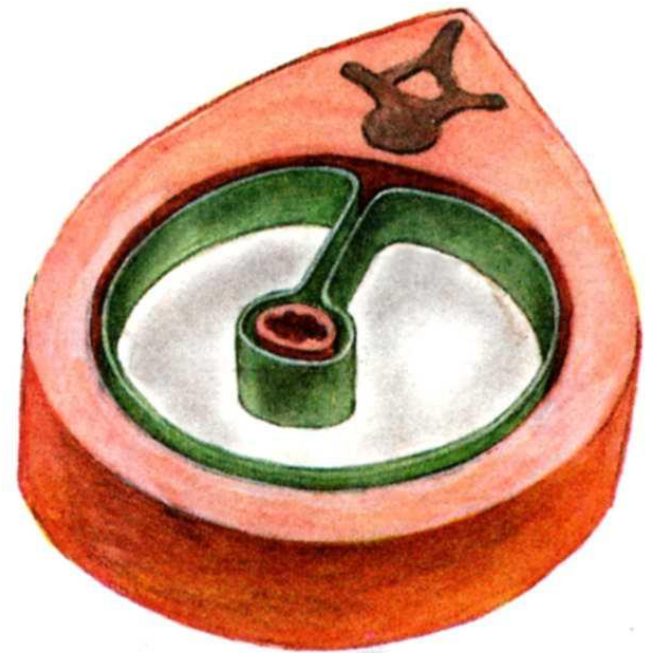


**Costoarticular line**



# CAVITAS PERITONEALIS

PERITONEUM PARIETALE  
PERITONEUM VISCERALE



# CAVITAS ABDOMINALIS

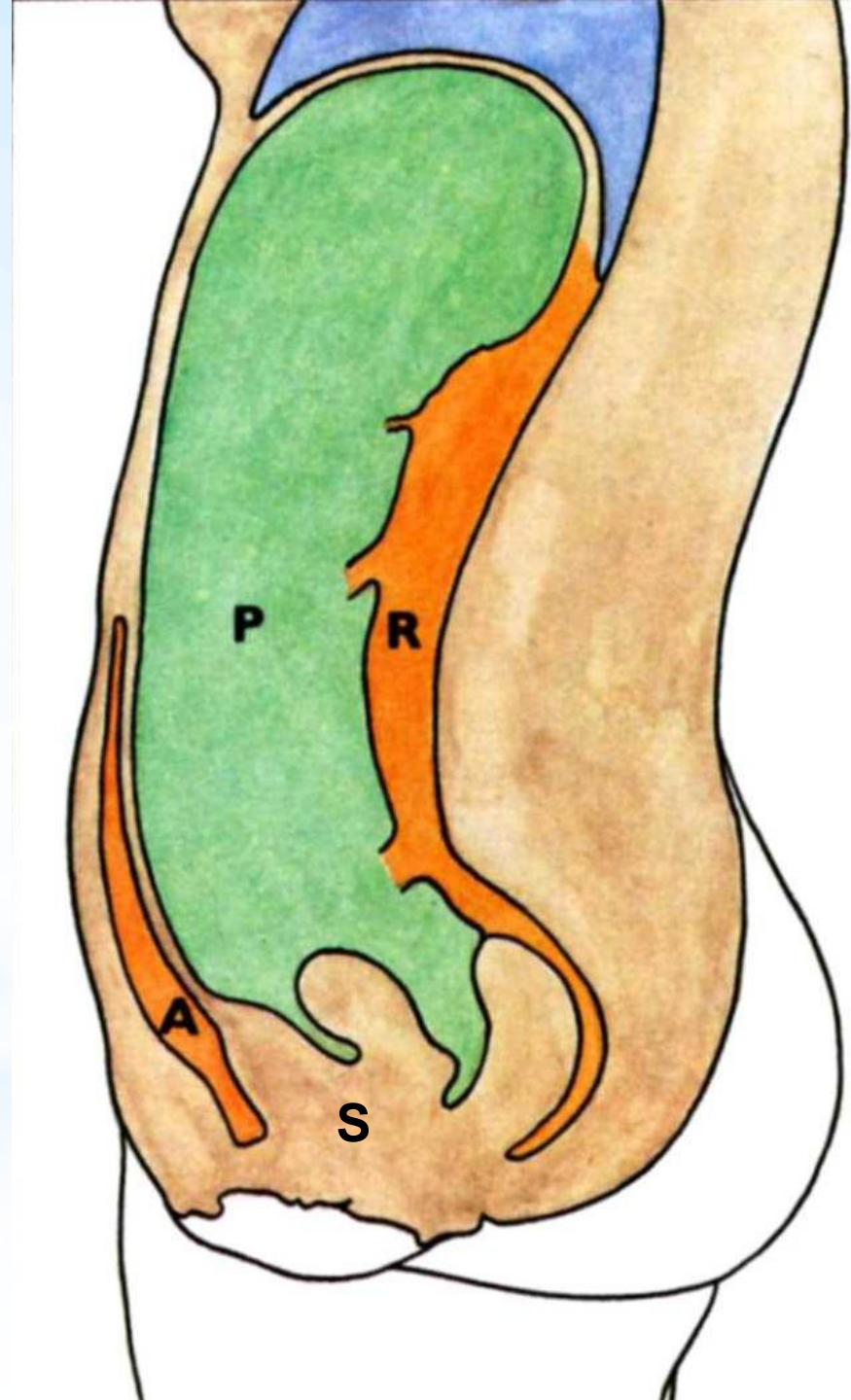
**P – cavitas peritonealis**

**A – spatium preperitoneale**

**R – spatium retroperitoneale**

**S – spatium subperitoneale  
(infraperitoneale)**

**ascites**



## **Intraparitoneal organs:**

**Abdominal part of the oesophagus, stomach, superior part of the duodenum, jejunum, ileum, vermiform appendix, transverse colon, sigmoid colon, liver, spleen**

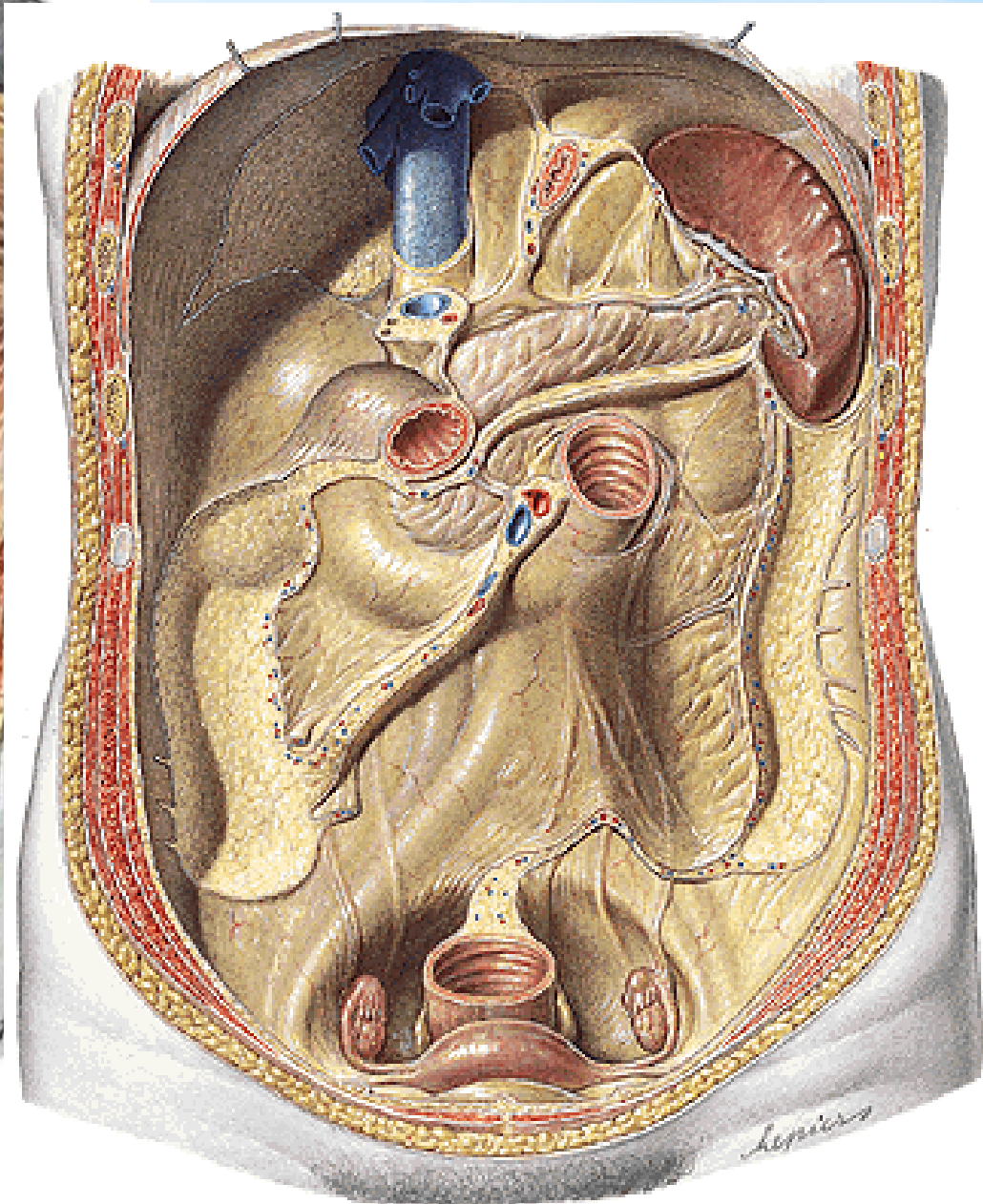
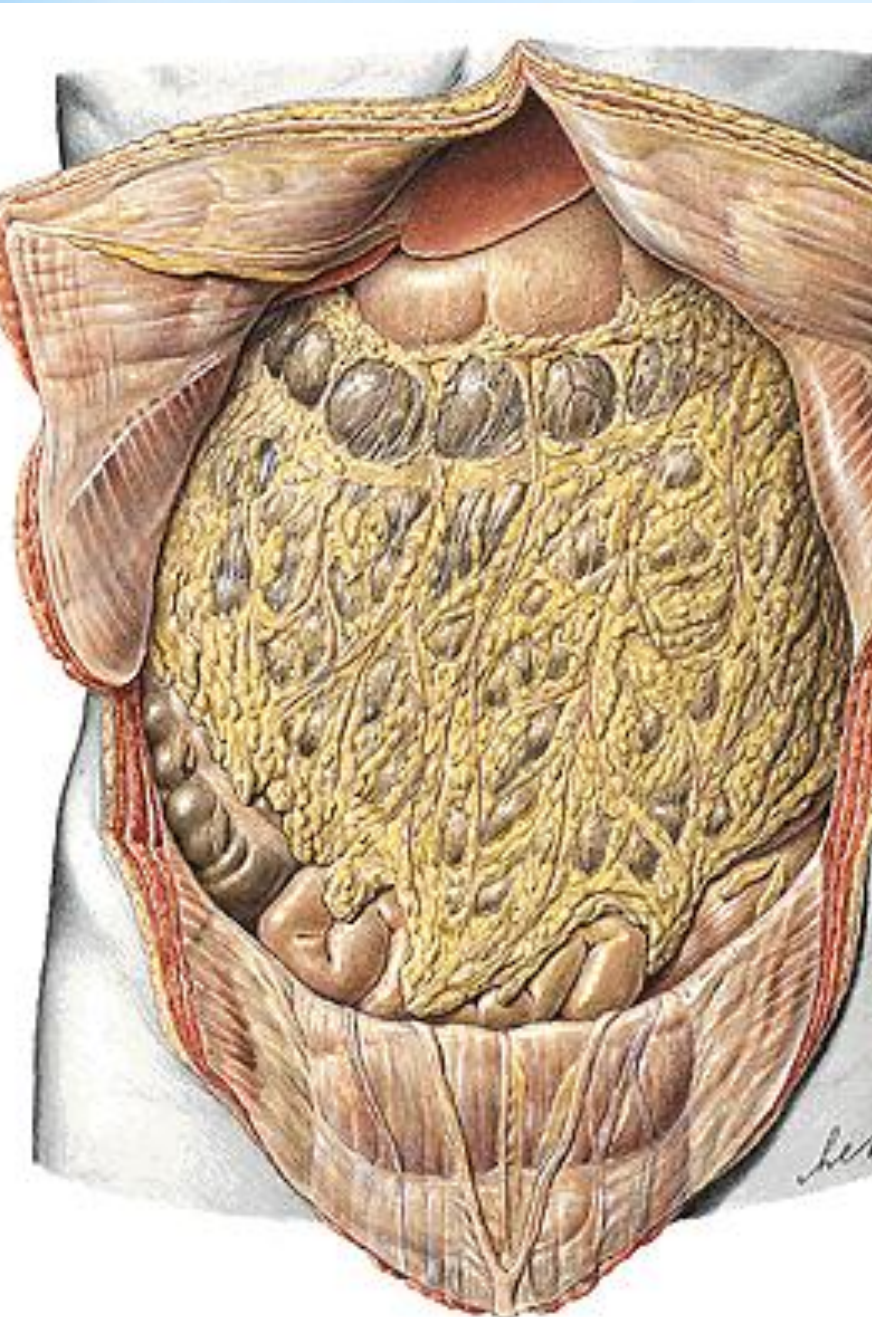
## **Secondarily retroperitoneal organs:**

**Most of the duodenum, pancreas, caecum, ascending colon, descending colon**

## **Primarily retroperitoneal organs:**

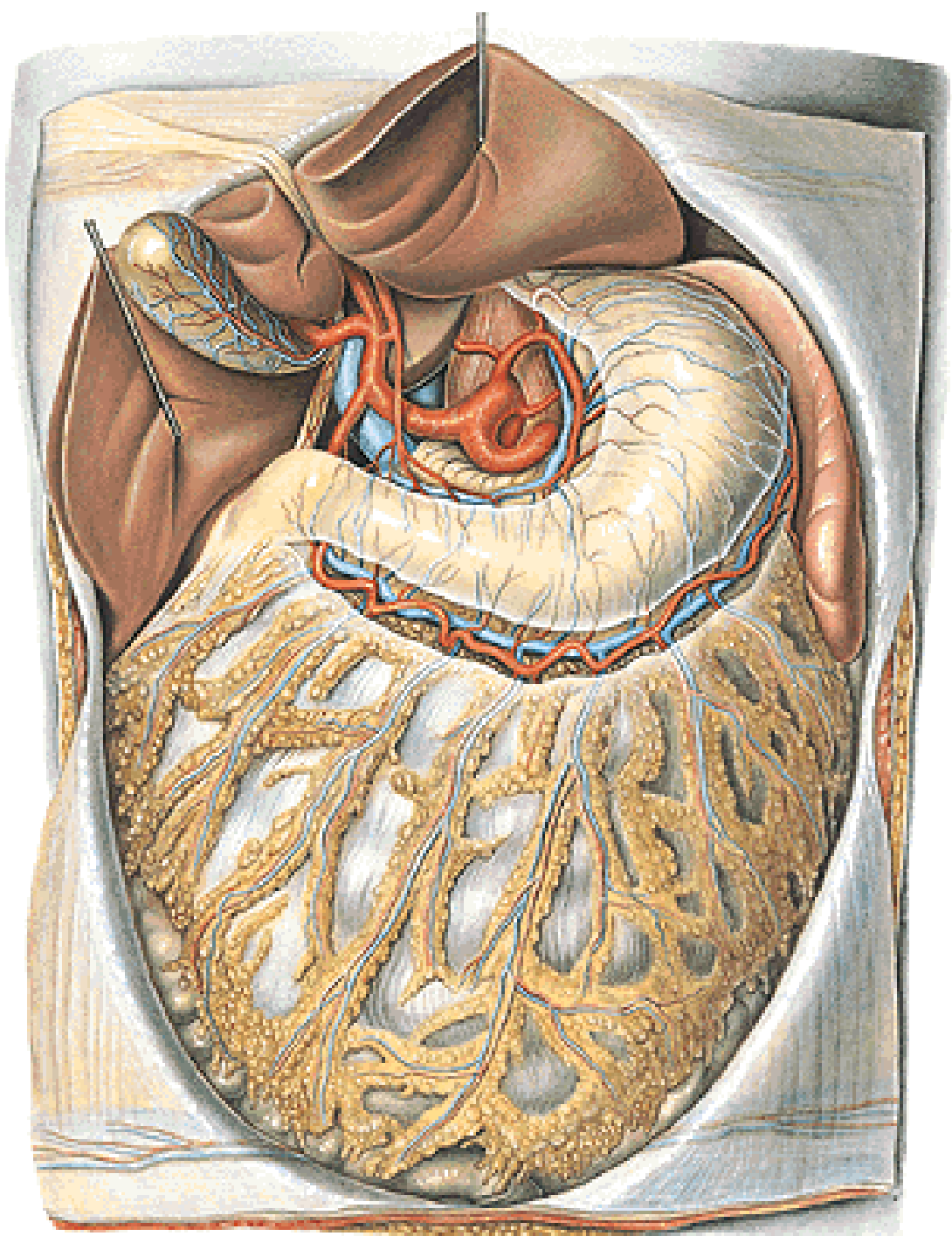
**Kidneys + ureters, suprarenal glands, aorta, inferior vena cava**

# Cavitas peritonealis - pars supramesocolica, inframesocolica



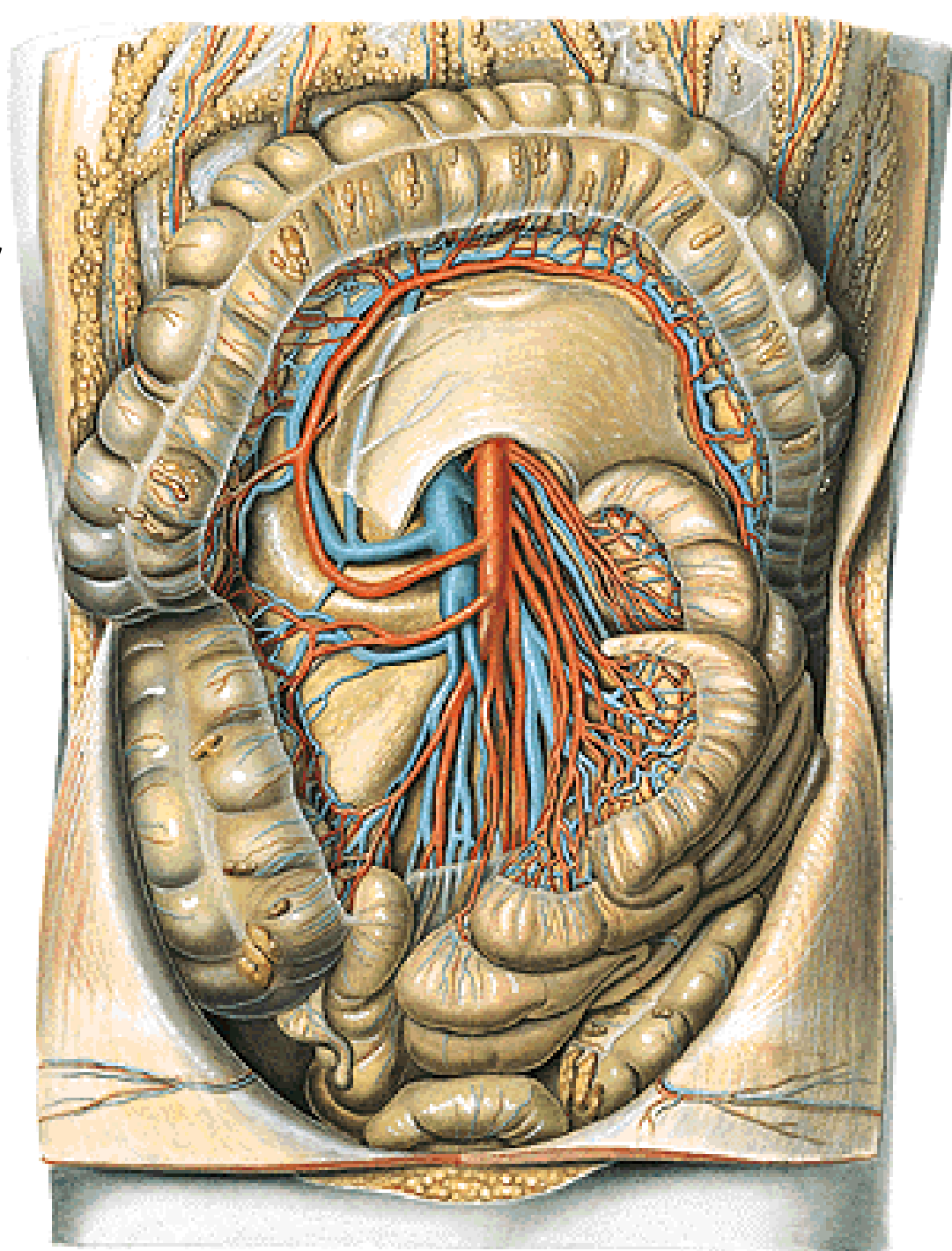
**Pars supramesocolica**

**Truncus coeliacus**



**Pars inframesocolica**

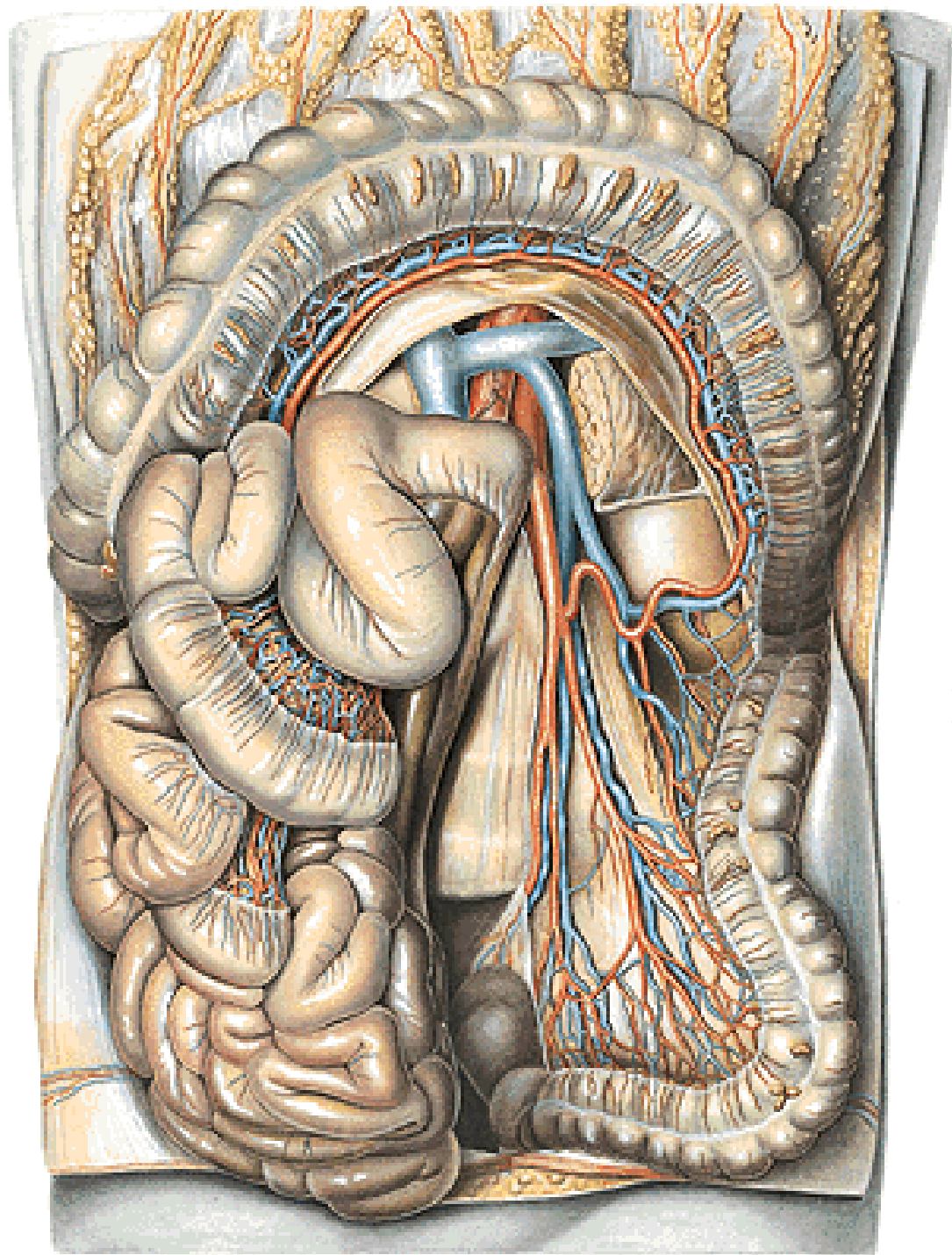
**A. mesenterica superior**





**Pars inframesocolica**

**A. mesenterica inferior**



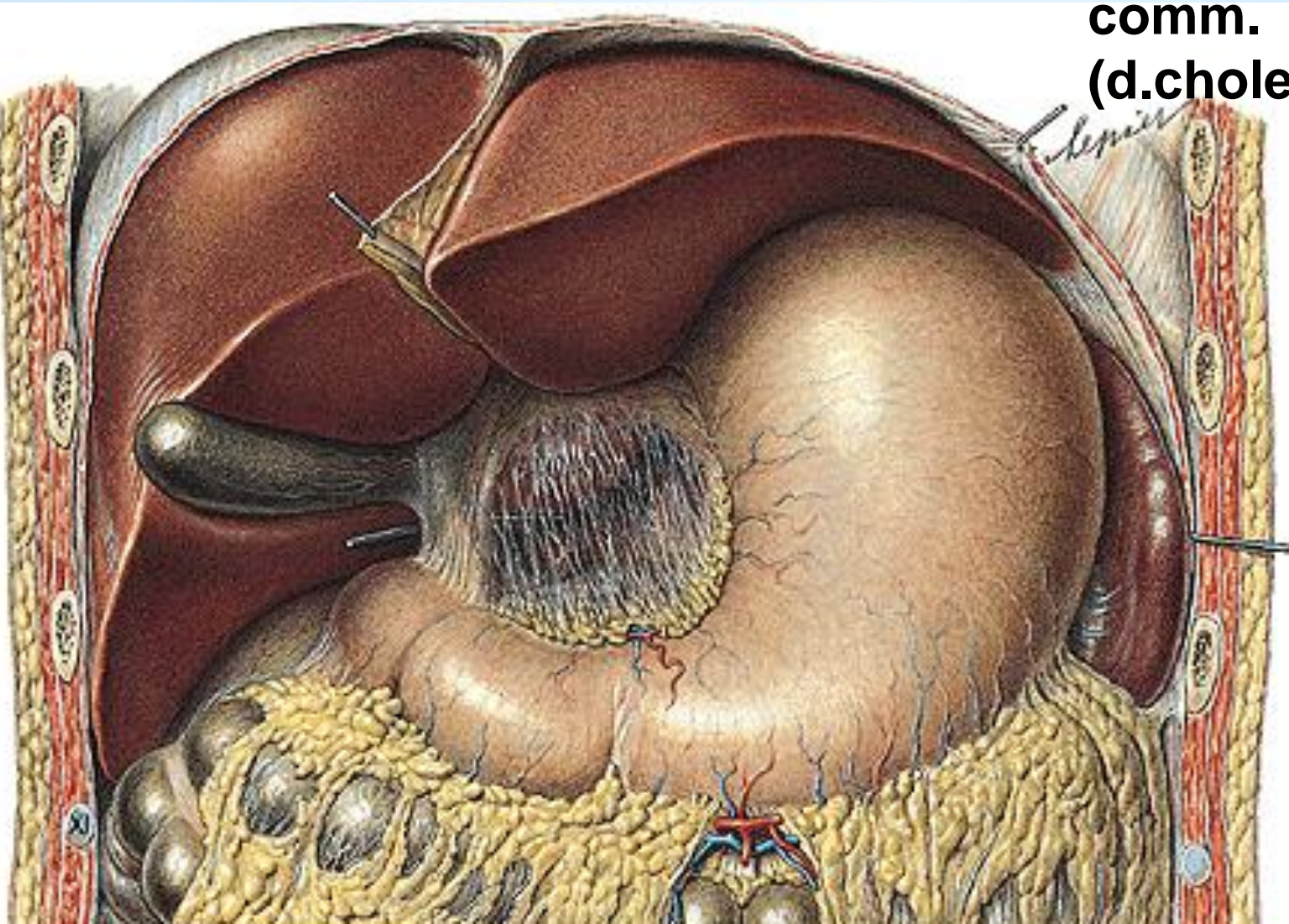
**Omentum minus - lig. hepatogastricum**

**- lig. hepatoduodenale - a. hepatica propria**

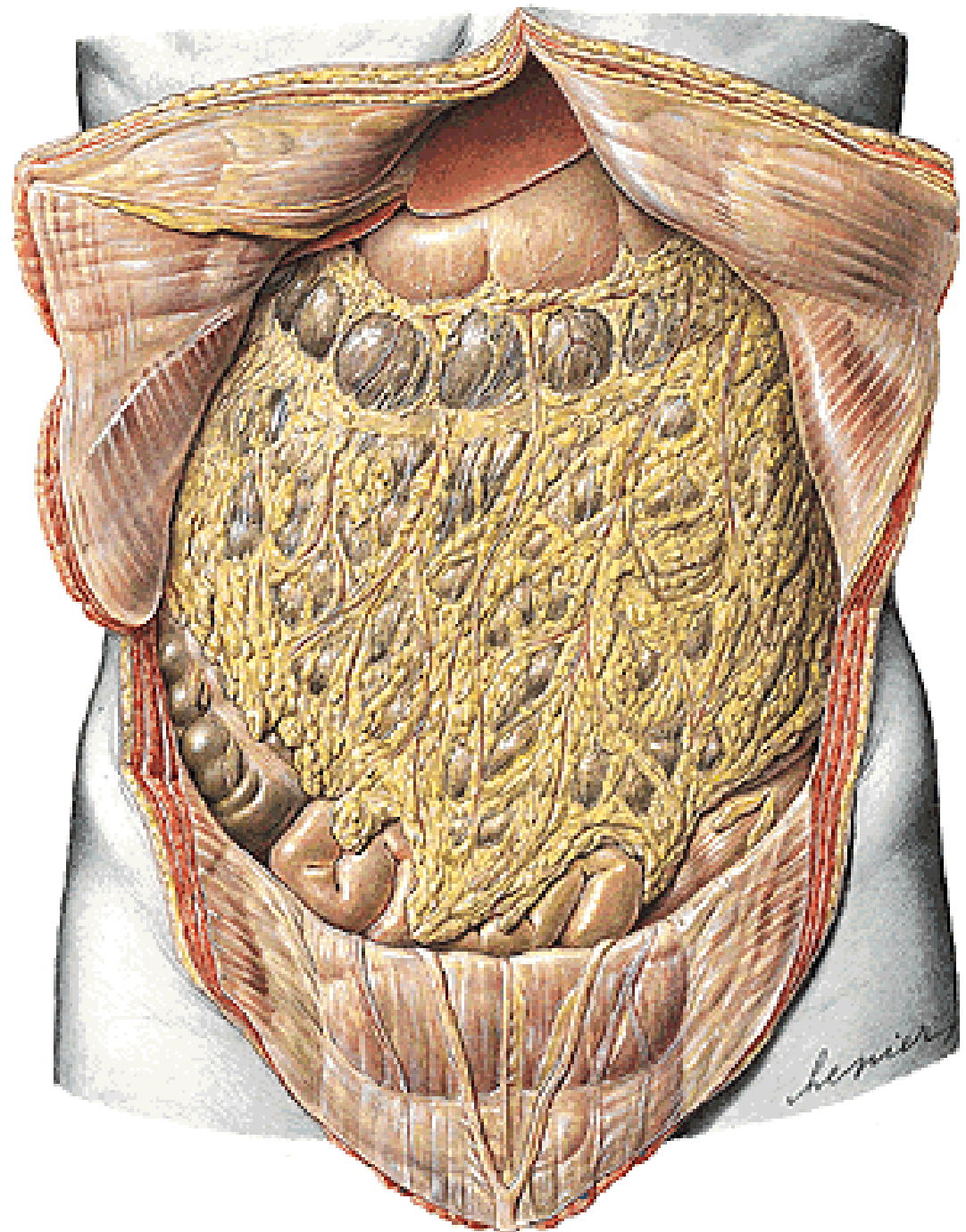
**- v. portae**

**- ductus hepaticus  
comm.**

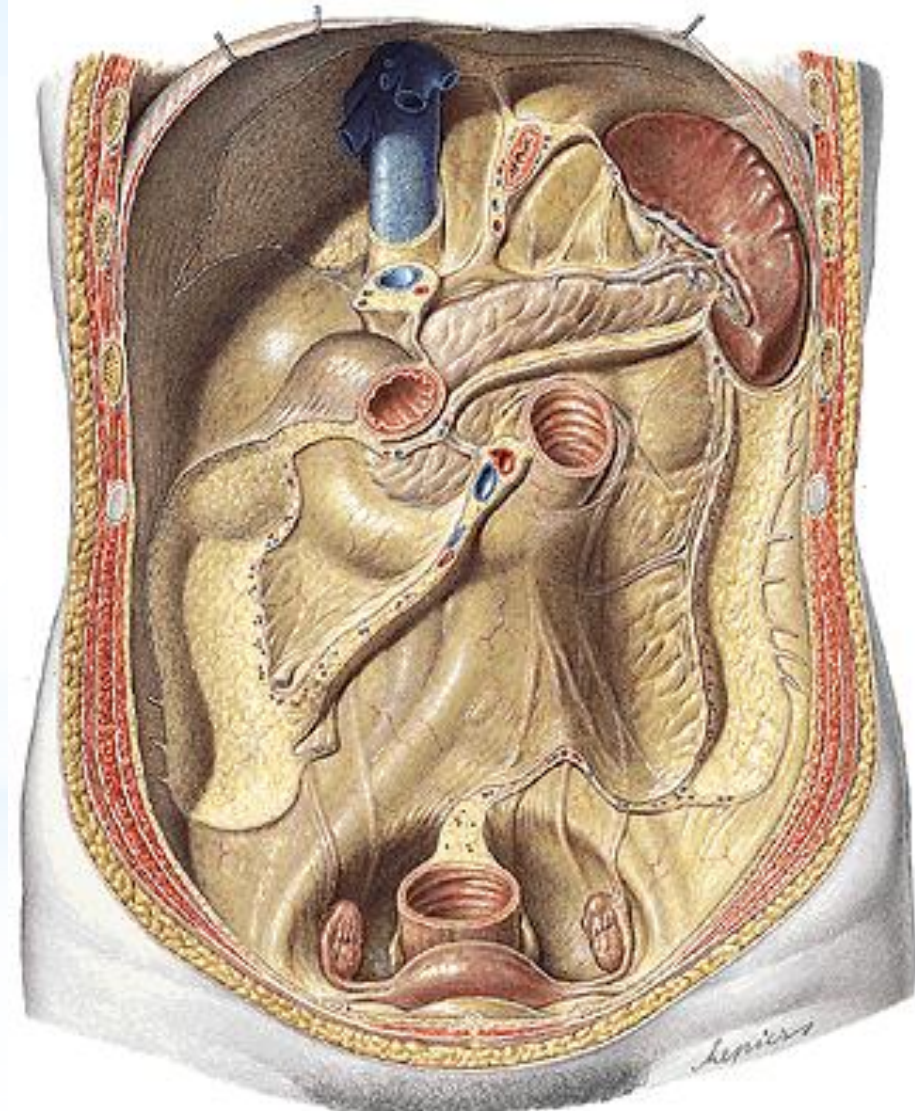
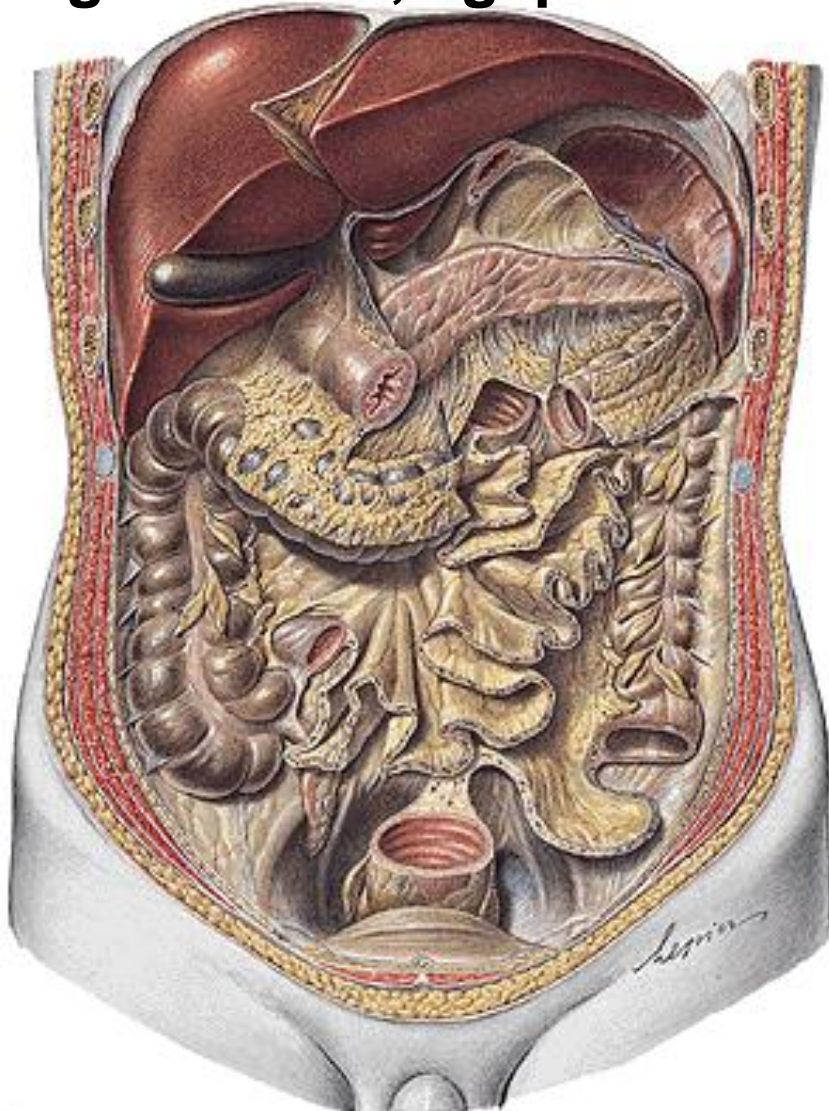
**(d.choledochus)**



**Omentum majus**  
**- lig. gastrocolicum**



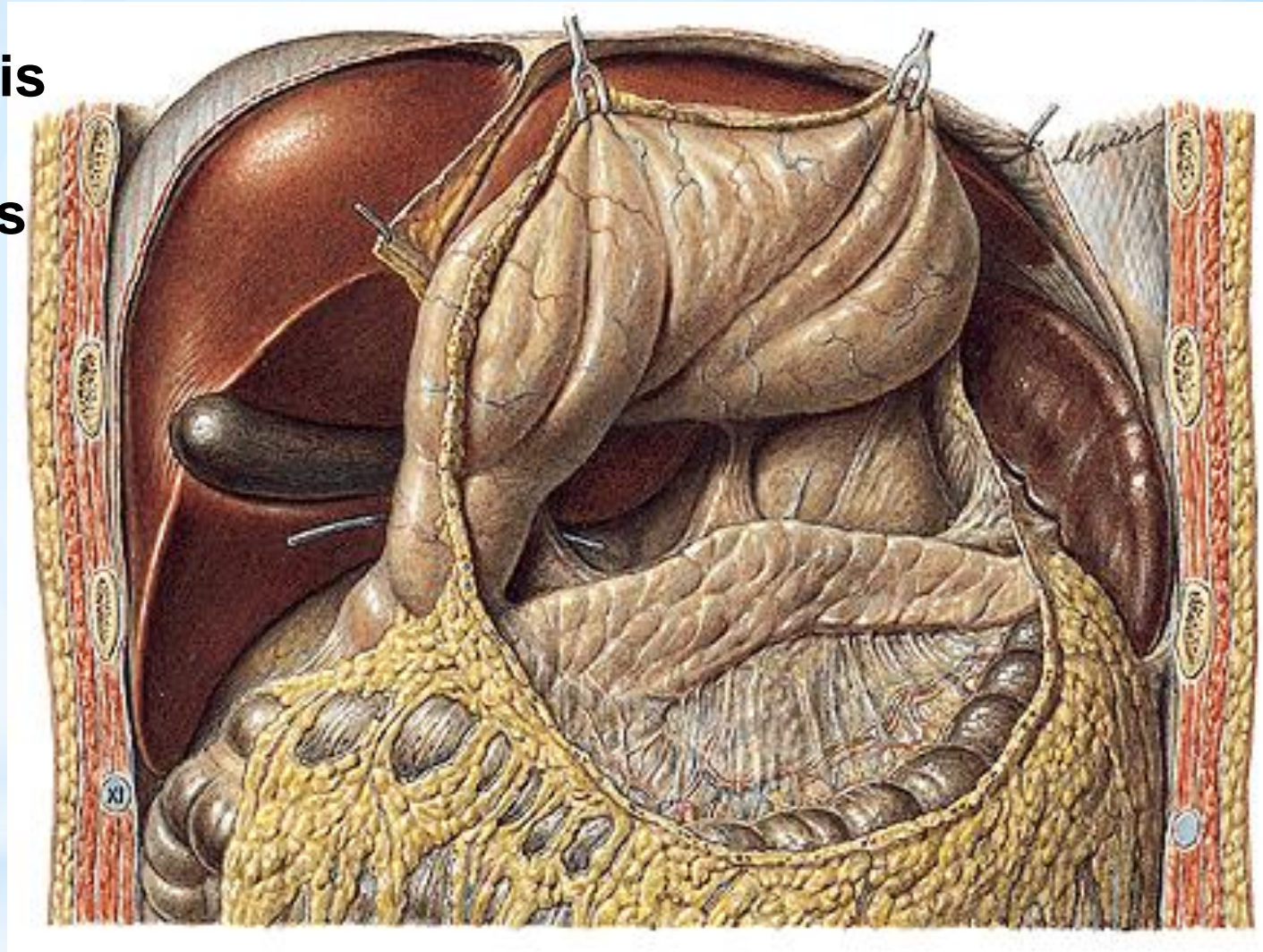
**Lig. gastrosplenicum, phrenicosplenicum, splenorenale**  
**Mesenterium – radix mesenterii (spatium paracolicum dx. et s.)**  
**Mesocolon transversum, mesoappendix, mesocolon**  
**sigmoideum, lig. phrenicocolicum**



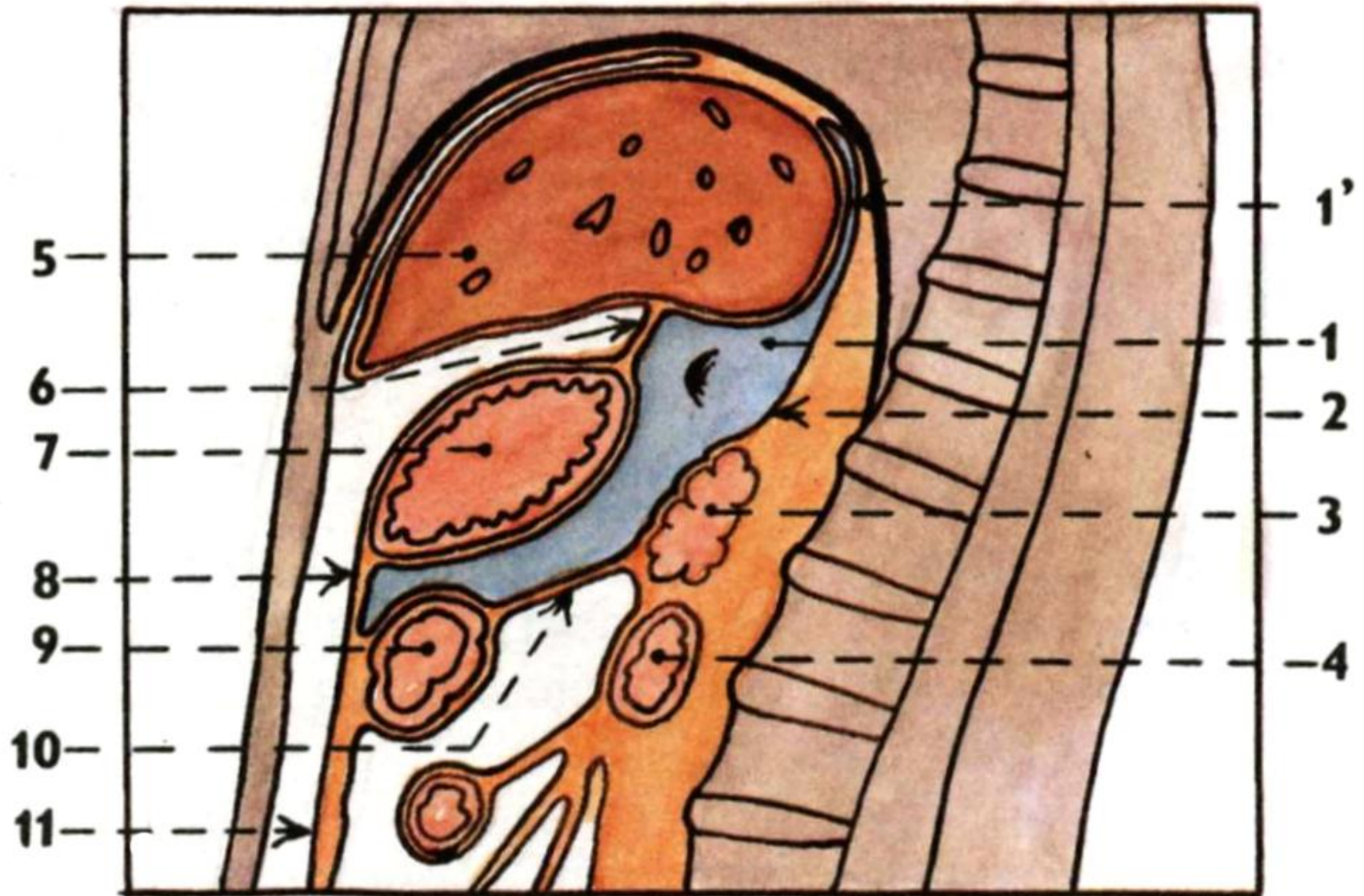
# RECESSUS PERITONEI

Bursa omentalis

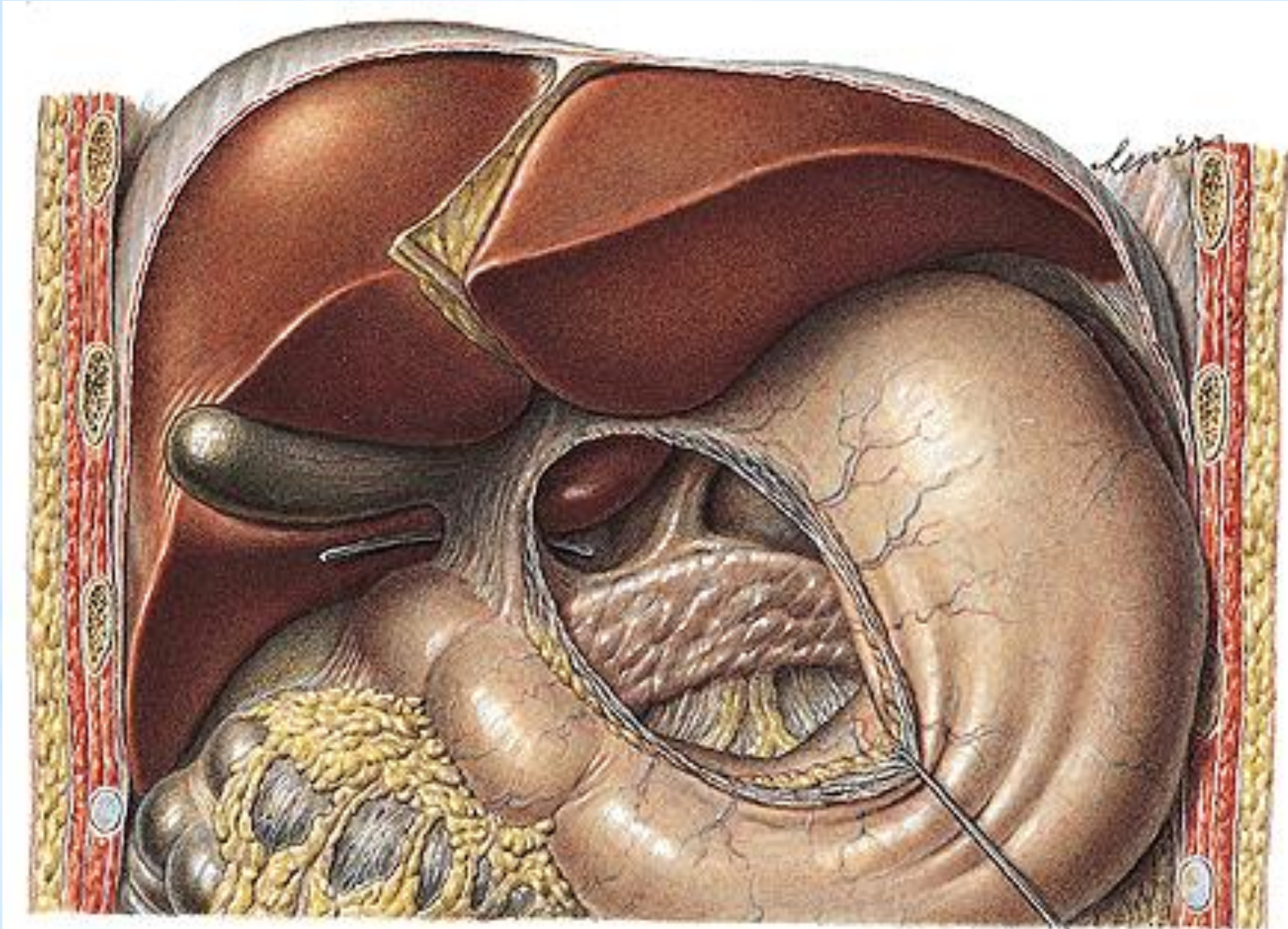
Internal hernias



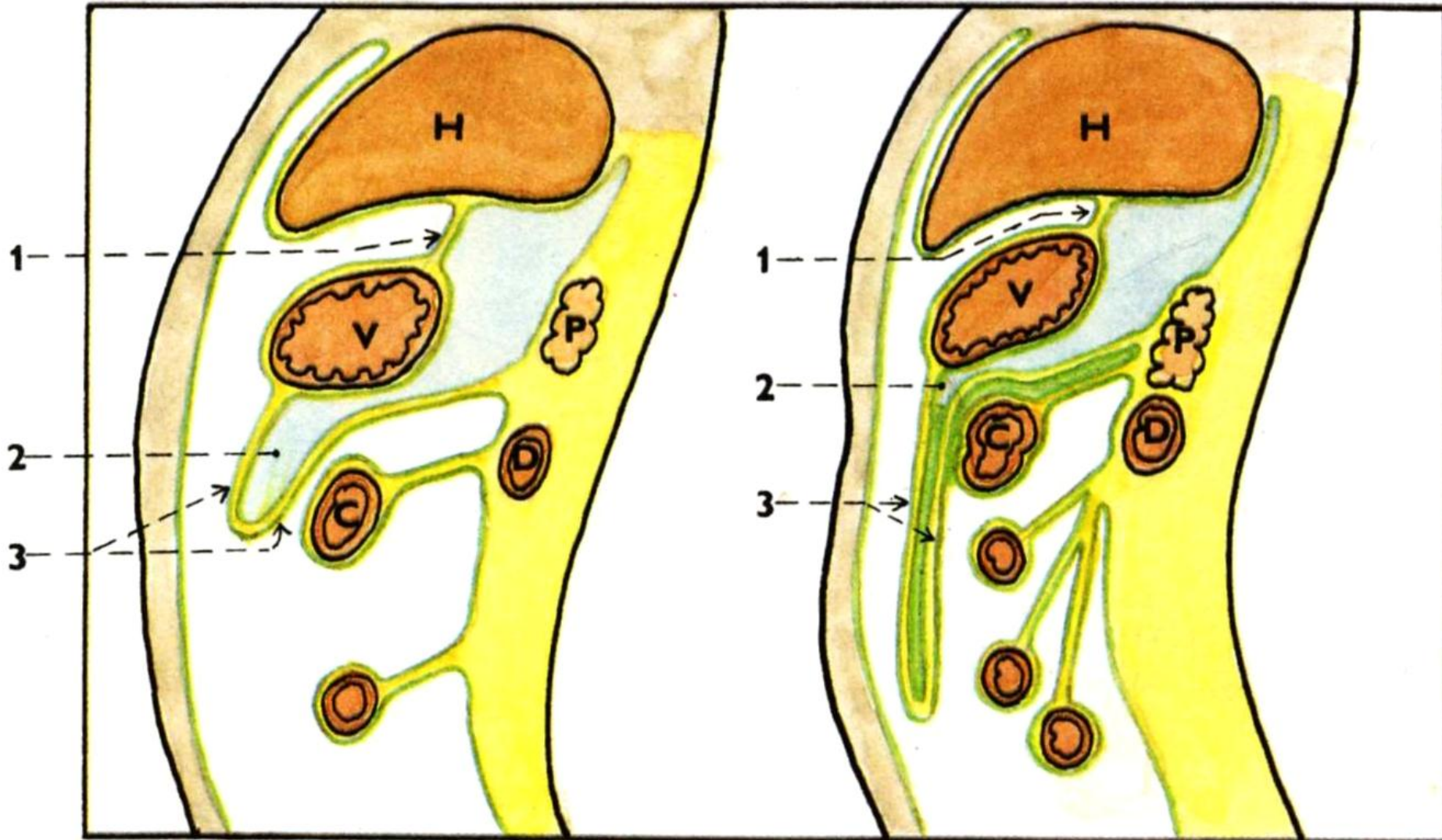
# Bursa omentalis



# Foramen omentale/epiploicum (Winslow) Recessus sup., splenicus, inf.



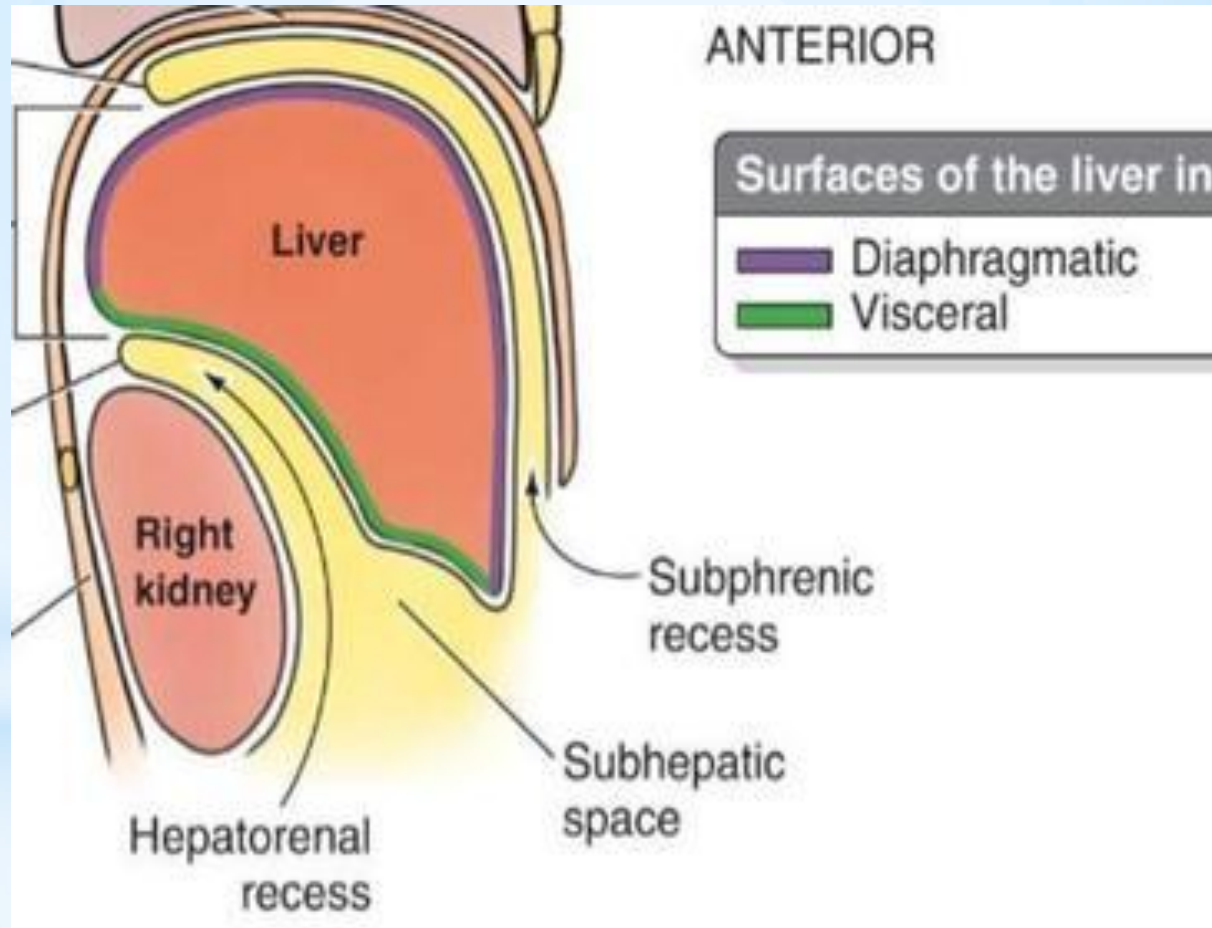
# Recessus inferior bursae omentalis





# Recessus subphrenicus dexter, sinister

## Recessus hepatorenalis



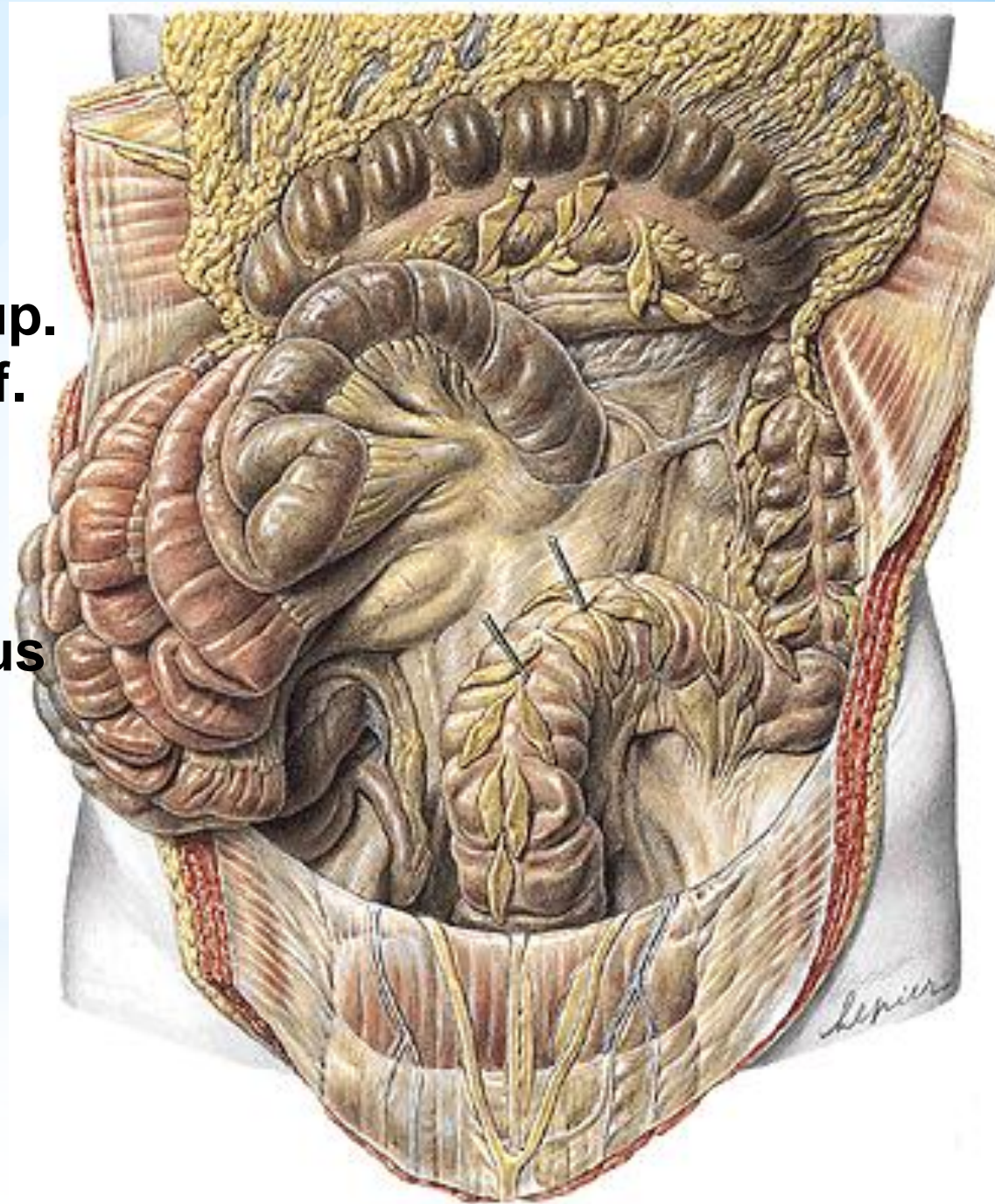
**Recessus duodenalis  
sup., inf., sinister,  
retroduodenalis**

**Recessus ileocaecalis sup.  
Recessus ileocaecalis inf.**

**Recessus retrocaecalis**

**Recessus intersigmoideus**

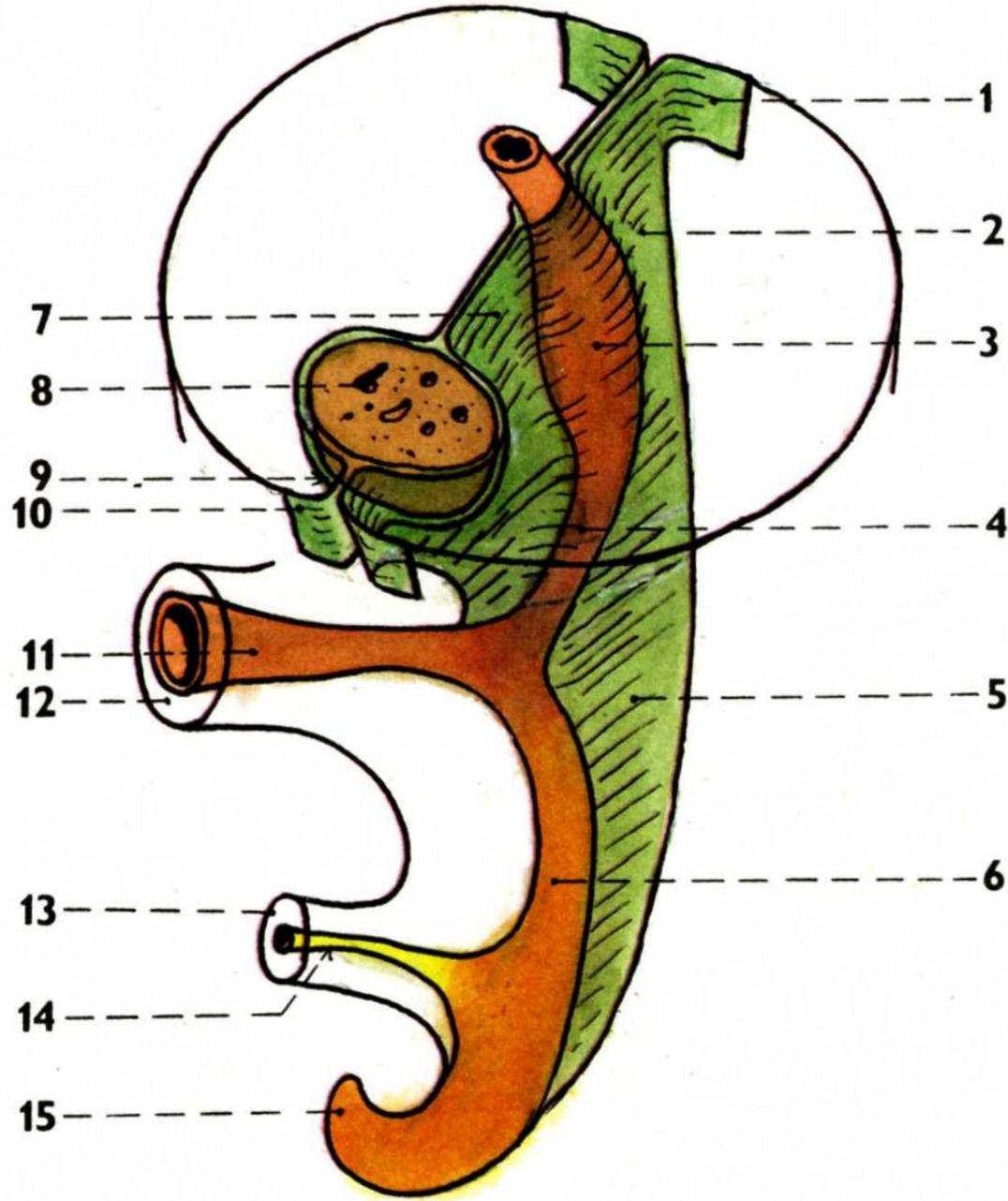
**Recessus paracolici**



# Development of the peritoneum

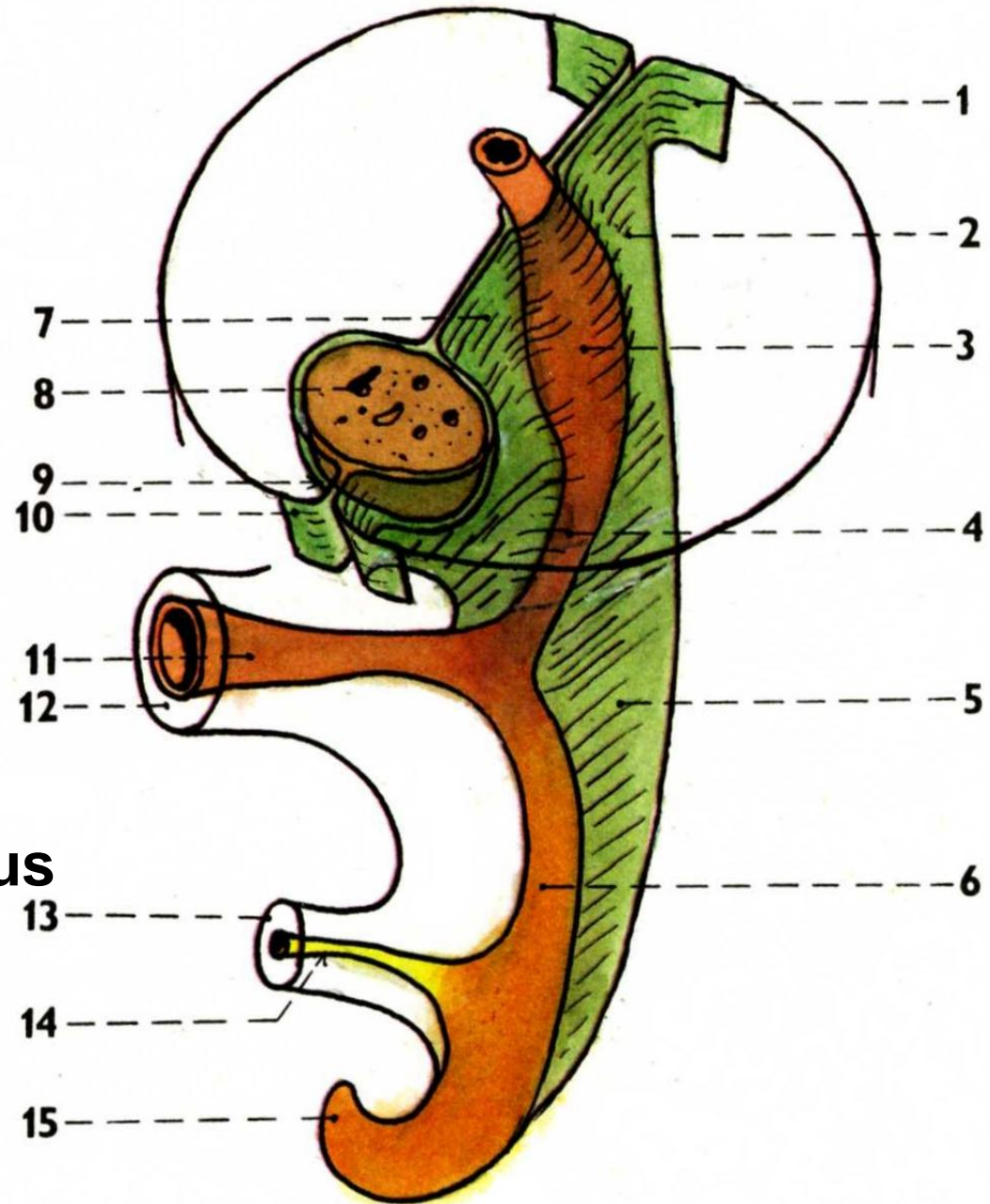
Mesenterium dorsale

Mesogastrium ventrale

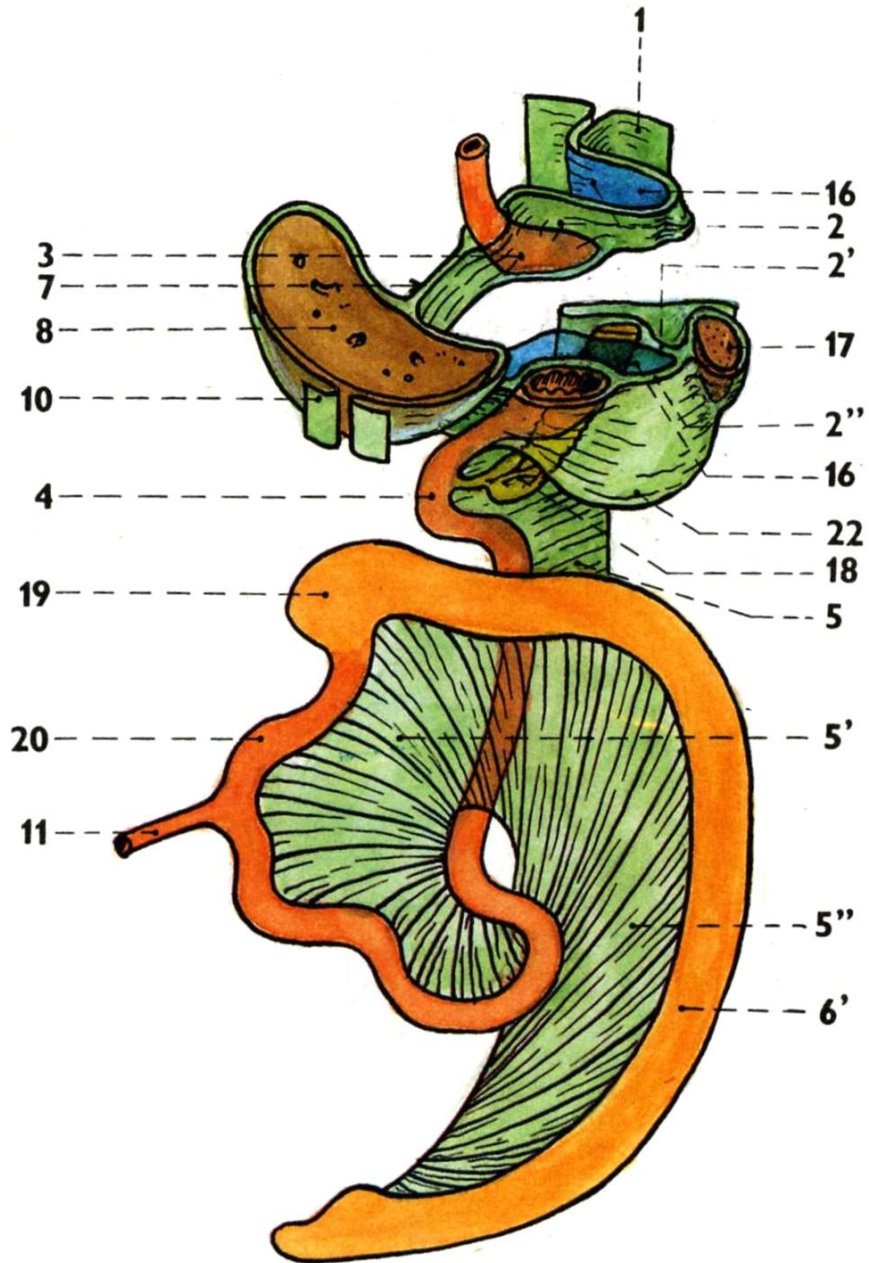
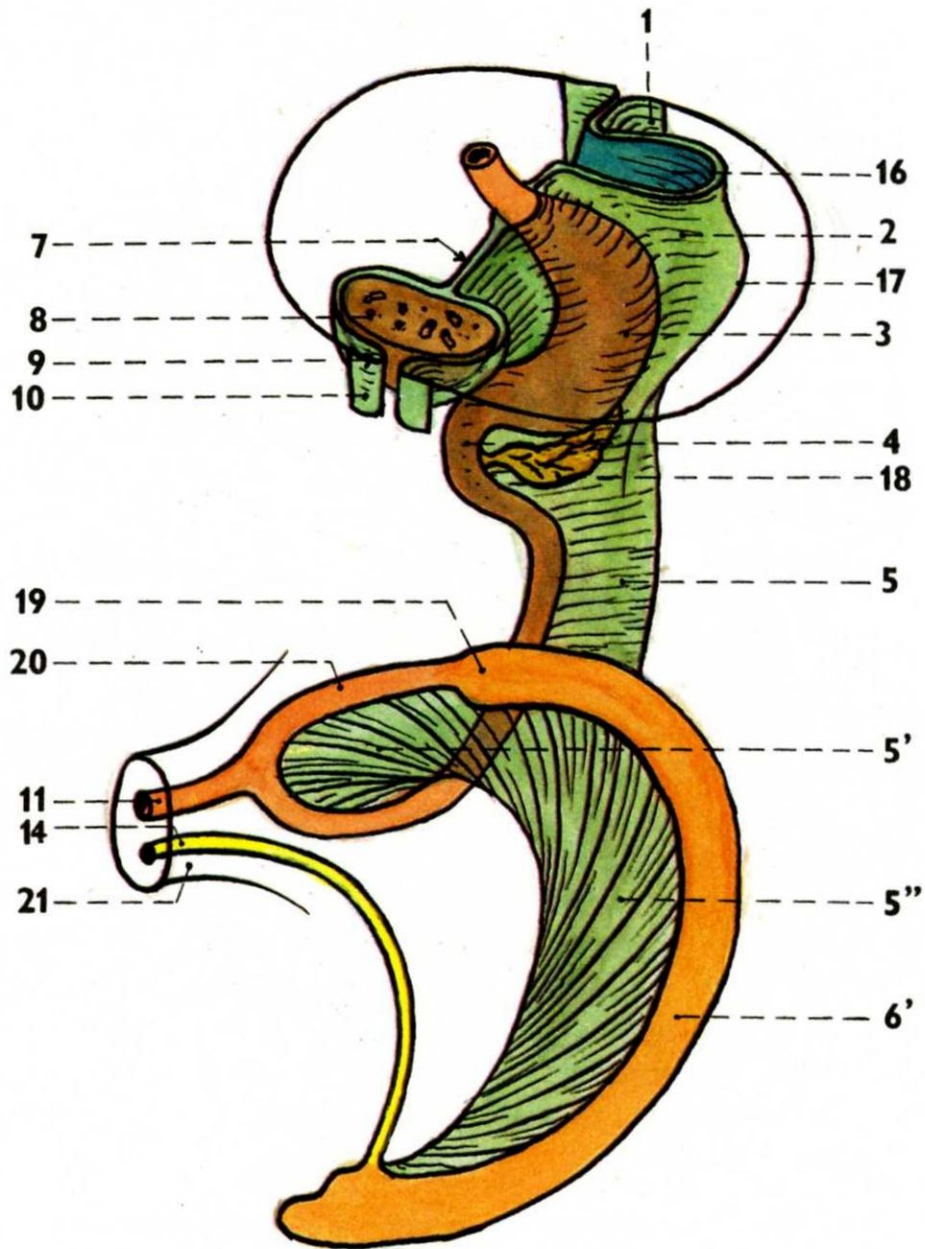


# Development of the peritoneum

1. peritoneum parietale
2. mesogastrium dorsale
3. anlage of the stomach
4. anlage of the duodenum
5. mesenterium
6. hindgut
7. mesogastrium ventrale
8. liver
9. mesogastrium ventrale
10. peritoneum parietale
11. ductus omphaloentericus
12. umbilicus
13. connecting stalk
14. allantois
15. hindgut



# Development of the peritoneum



# Development of the peritoneum

2'. lig. phrenicolienale

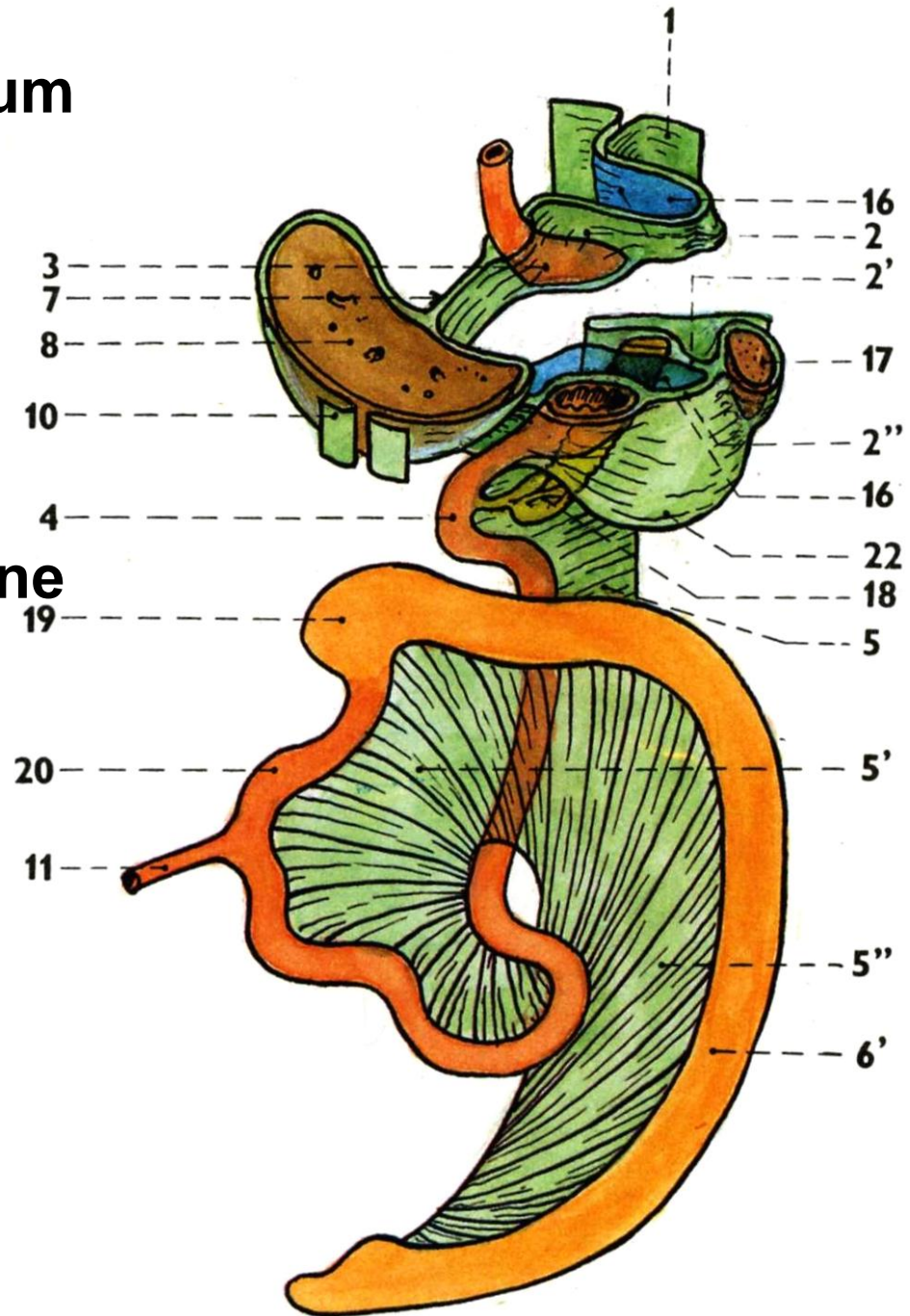
2''. lig. gastrolienale

5'. mesenterium

5''. mesocolon

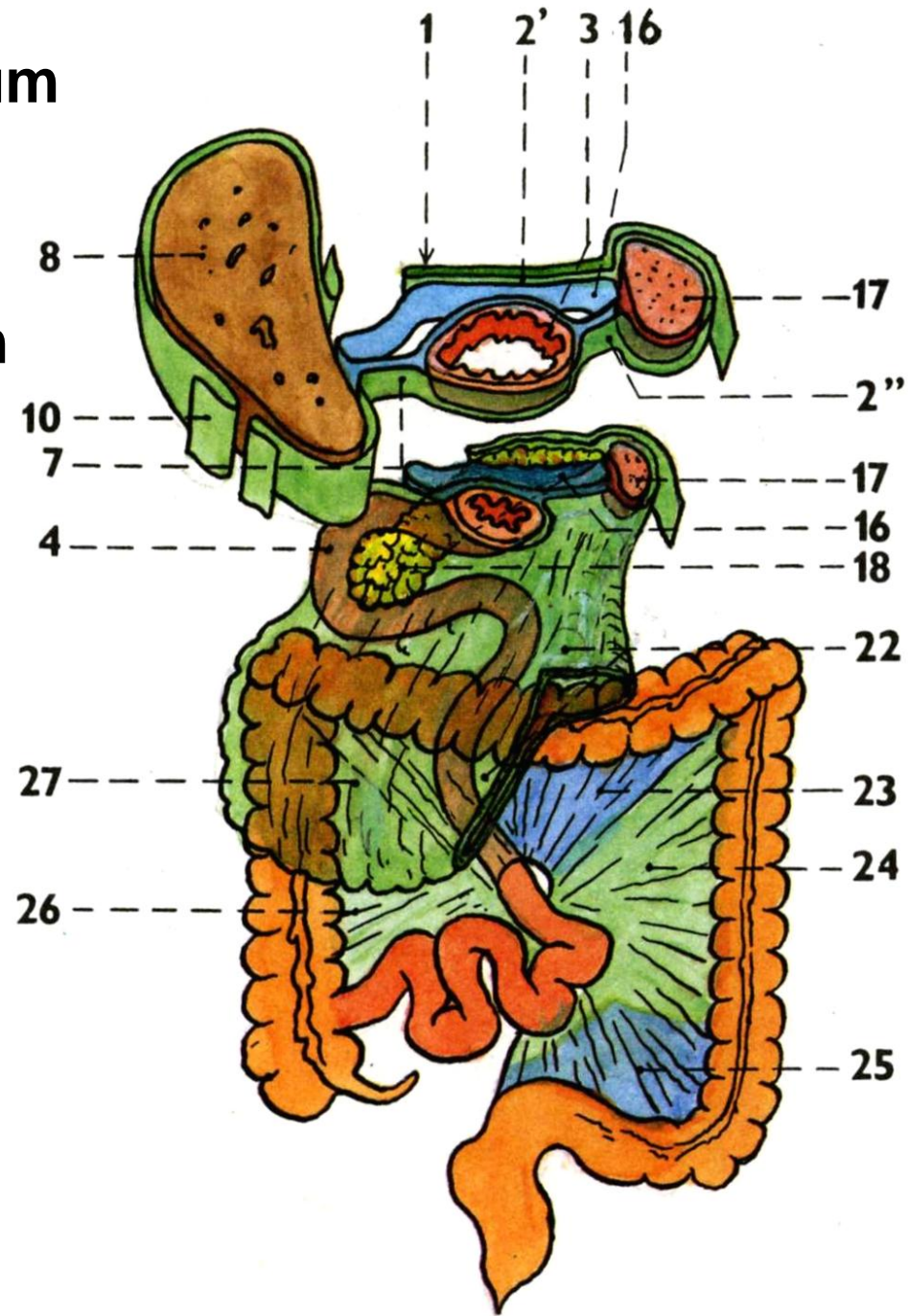
6'. anlage of the large intestine

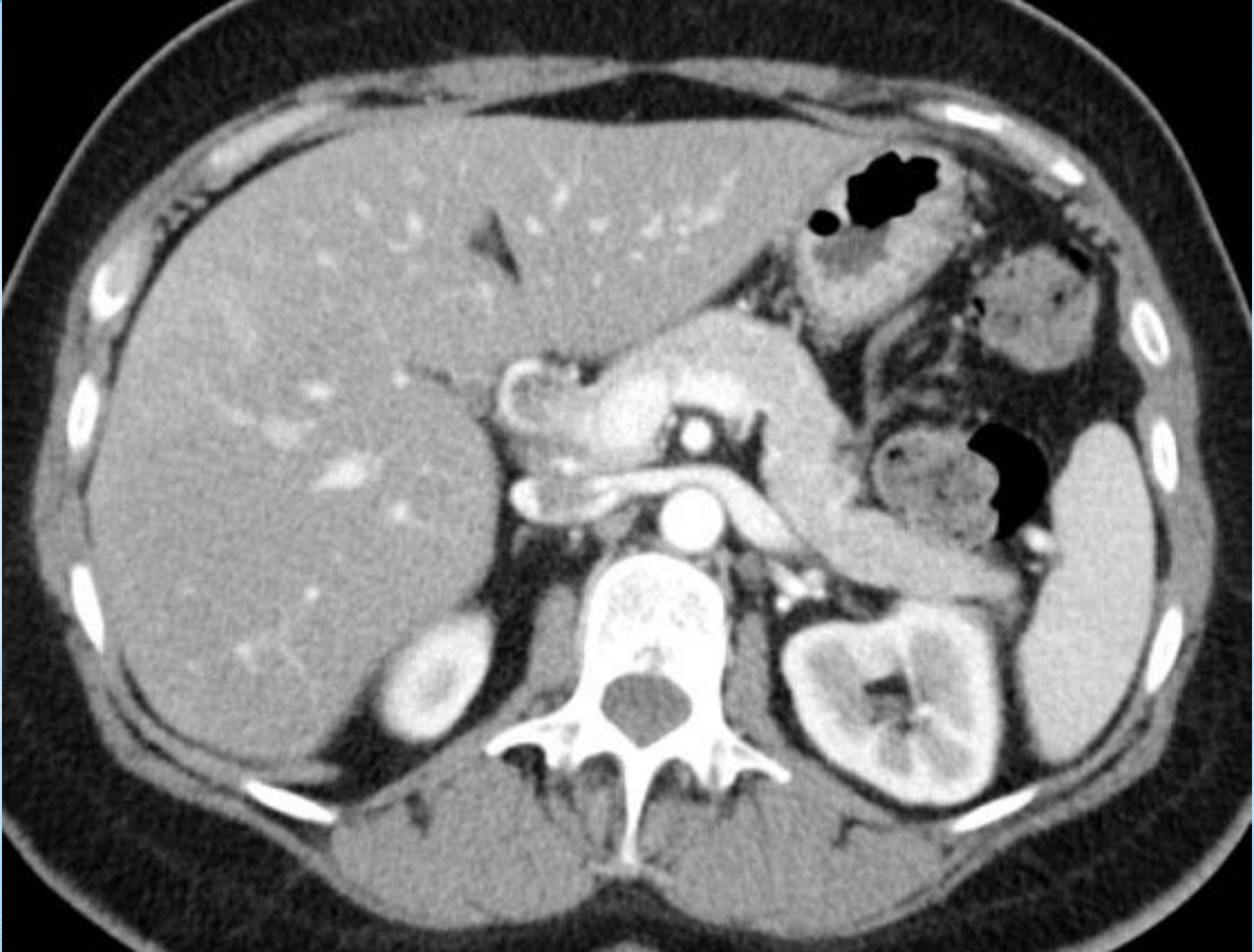
22. omentum majus



# Development of the peritoneum

- 23. mesocolon transversum
- 24. mesentery of the colon descendens
- 25. mesocolon sigmoideum
- 26. mesentery of the colon ascendens
- 27. omentum majus







Illustrations 27-31 were copied from:

**Čihák R: Anatomie 2 (Splanchnologia). Avicenum, zdravotnické nakladatelství, Praha, 1988.**

Remaining illustrations, photographs, and radiographs were copied from:

**Atlas der Anatomie des Menschen/Sobotta.  
Putz,R., und Pabst,R. 20. Auflage. München:  
Urban & Schwarzenberg, 1993**