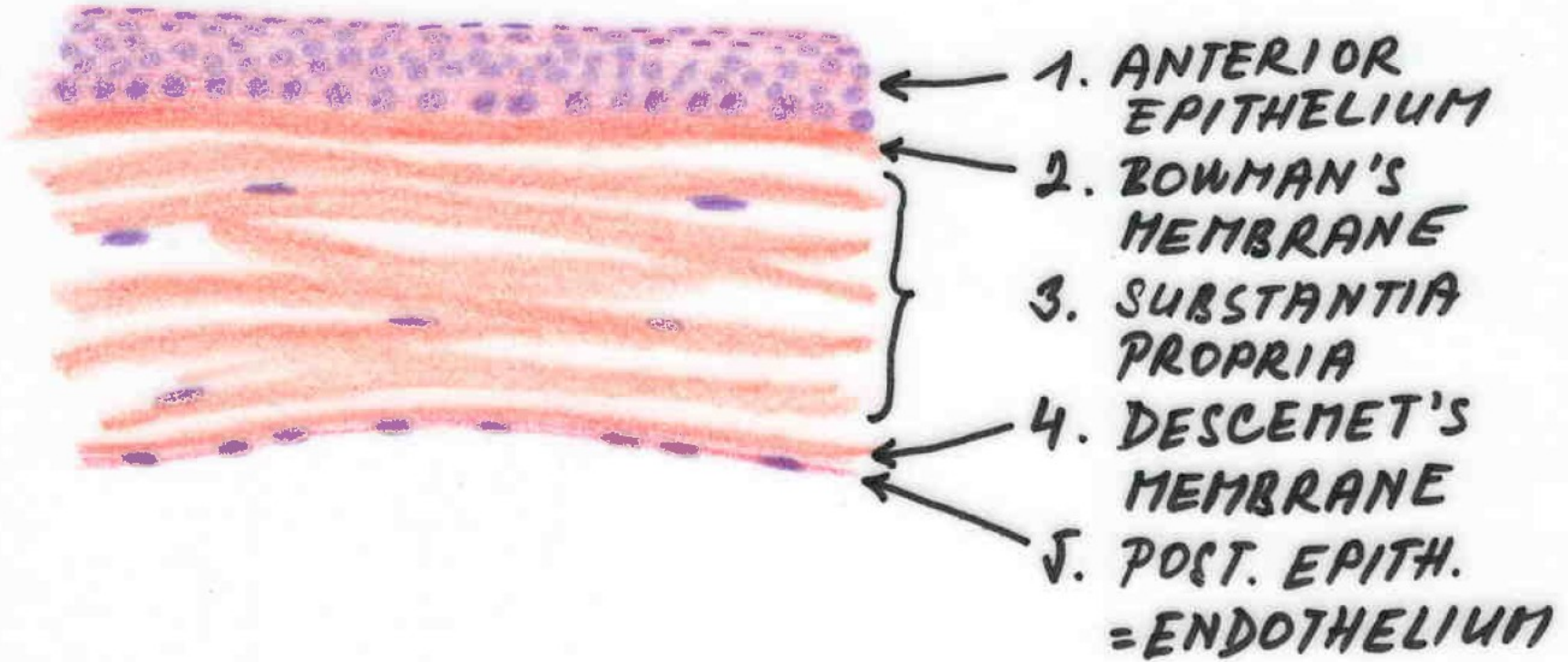


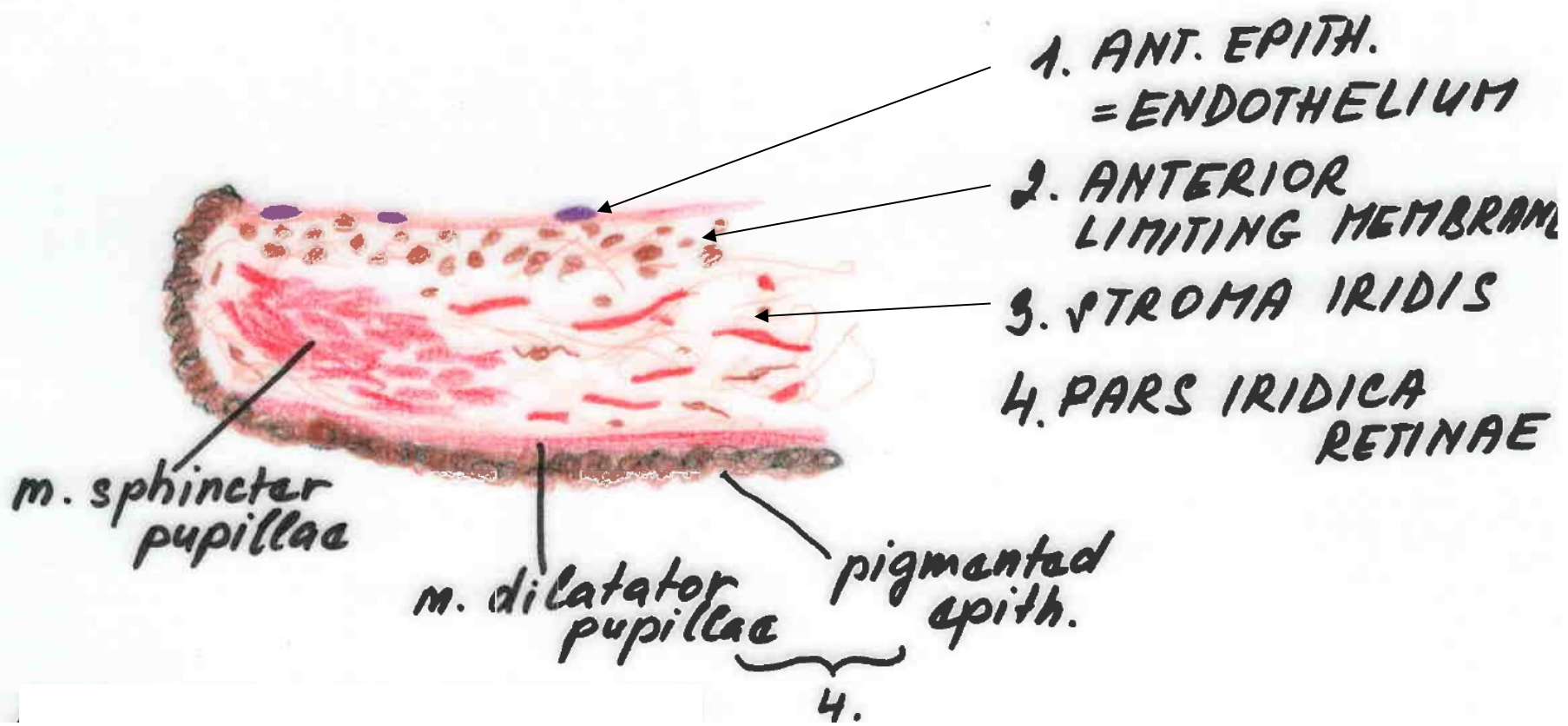
ANTERIOR SEGMENT OF THE EYE

CORNEA (HE)



ANTERIOR SEGMENT OF THE EYE

IRIS (HE)



1. ANT. EPITH.
= ENDOTHELIUM
2. ANTERIOR
LIMITING MEMBRANE
3. STROMA IRIDIS
4. PARS IRIDICA
RETINAE

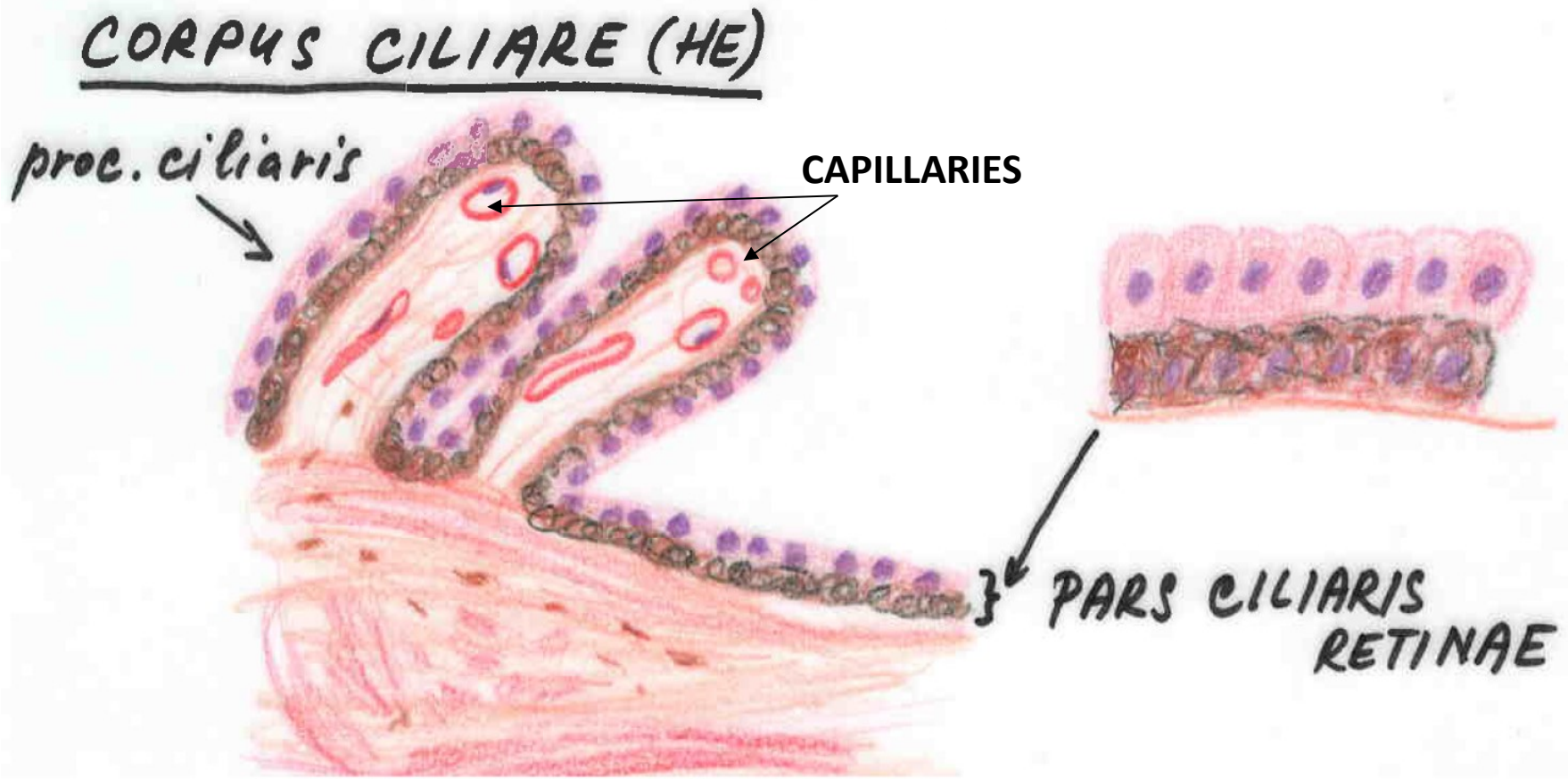
m. sphincter
pupillae

m. dilatator
pupillae

pigmented
epith.

4.

ANTERIOR SEGMENT OF THE EYE



POSTERIOR SEGMENT OF THE EYE

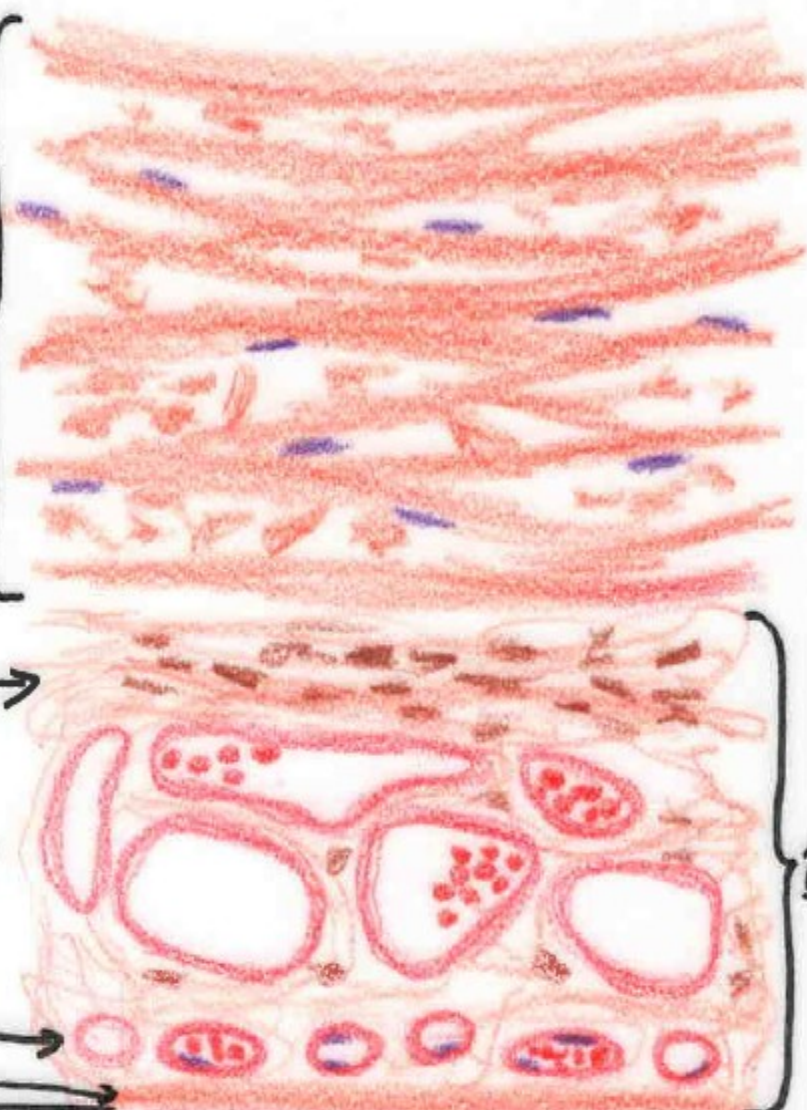
A - SCLERA

B - CHOROIDEA

A

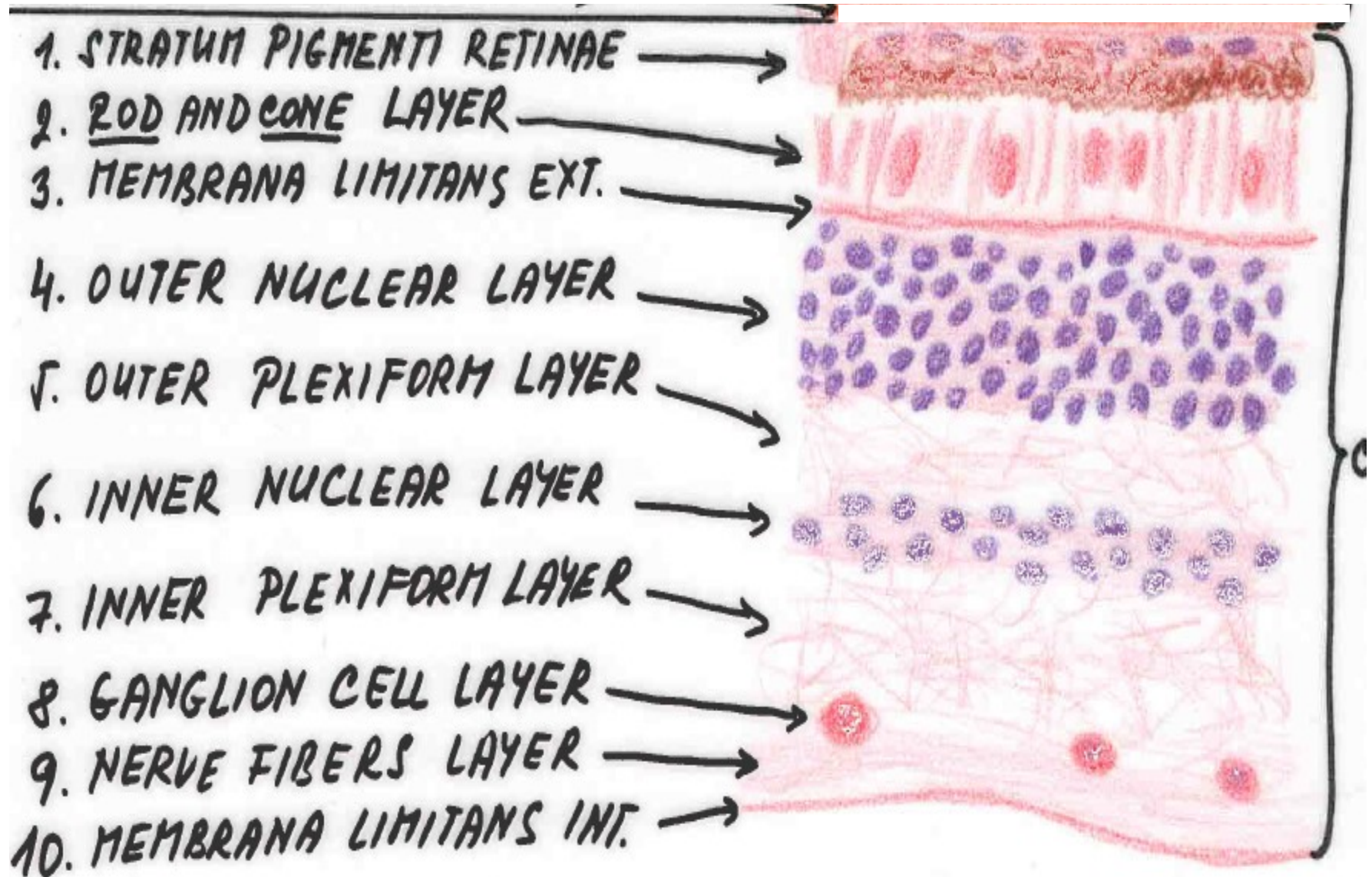
B ↓

1. LAMINA SUPRACHOROIDEA →
2. LAMINA VASCULOSA →
3. LAMINA CHOROCAPILLARIS →
4. LAMINA VITREA (BRUCH) →



POSTERIOR SEGMENT OF THE EYE

RETINA



DUCTUS COCHLEARIS + ORGANON SPIRALE COCHLEAE (CORTI)

