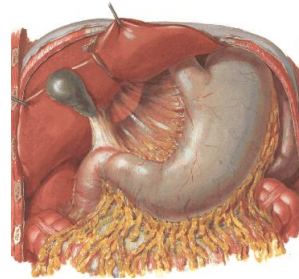
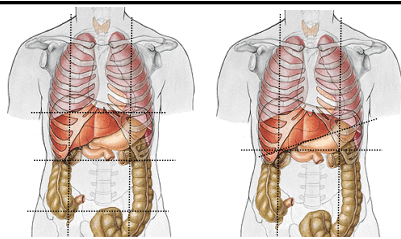


## DIGESTIVE SYSTEM II.

### TUNICA EXTERNA VENTRICULI (visceral peritoneum)



- Omentum minus
  - lig. hepatoduodenale
  - lig. hepatogastricum
- Omentum majus
  - lig. gastrocolicum
- Lig. gastrolienale  
(lig. splenicogastricum)



regio hypochondriaca sin.

cardia – left from Th<sub>11-12</sub>

pylorus – right from L<sub>1-2</sub>

Labbe's triangle

Traube's semilunar space

### INTESTINE (SMALL, LARGE)

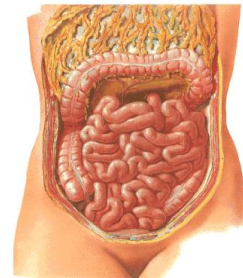
#### SMALL INTESTINE

3–5 m, intestinal loops

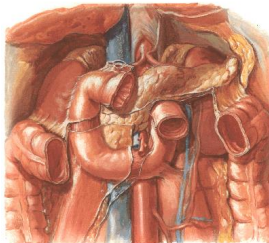
#### DUODENUM

#### JEJUNUM

#### ILEUM



### DUODENUM



Pars superior  
(ampulla, bulbus duodeni)

Flexura duodeni sup.

Pars descendens

Flexura duodeni inf.

Pars horizontalis

Pars dextra et sinistra

Pars ascendens

Flexura duodenojejunalis

12 inches (25-30 cm)-Herofilos, makes the loop around L2

Plica longitudinalis duodeni

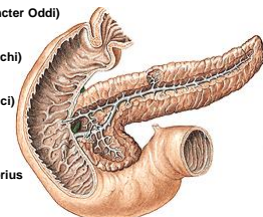
Papilla duodeni major (Vateri)

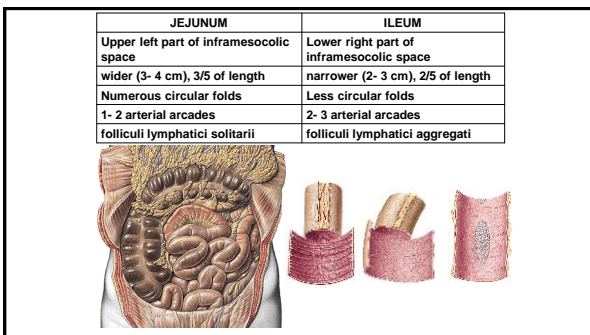
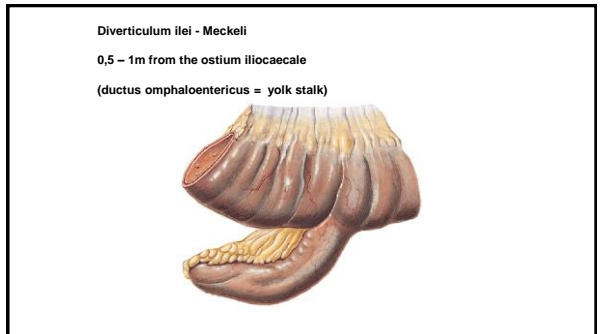
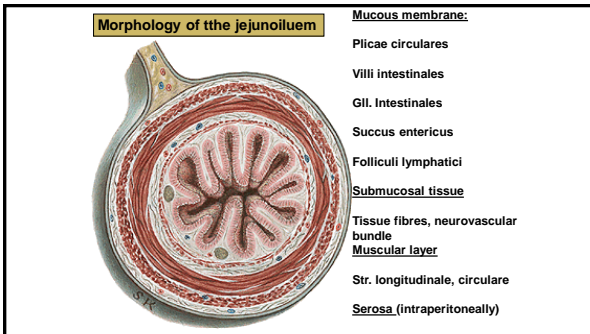
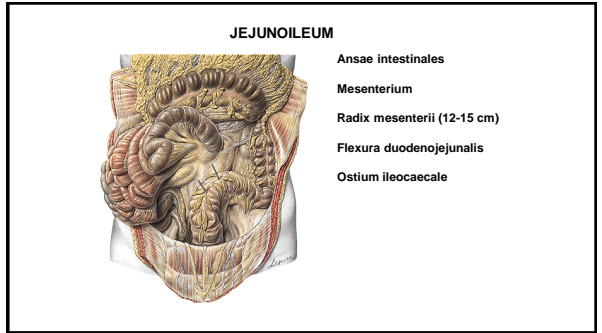
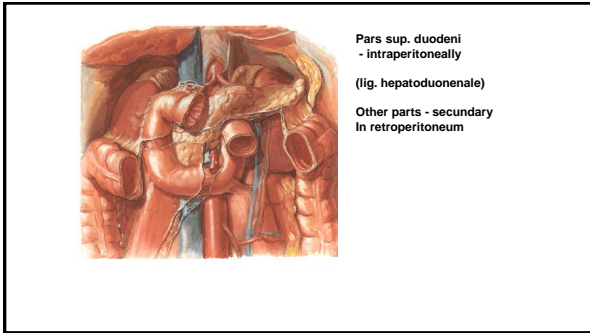
ampulla hepatopancreatica  
(m. sphincter papillae  
hepatopancreaticae, m. sphincter Oddi)

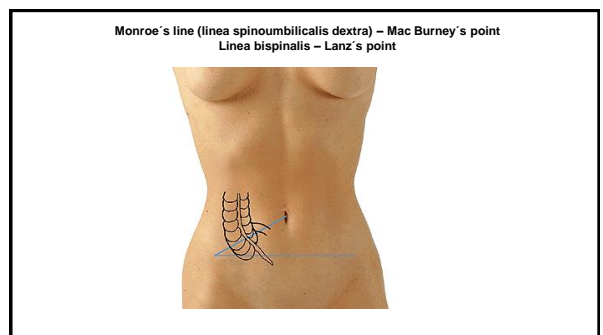
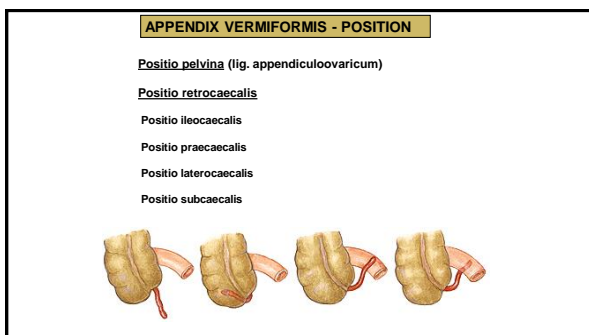
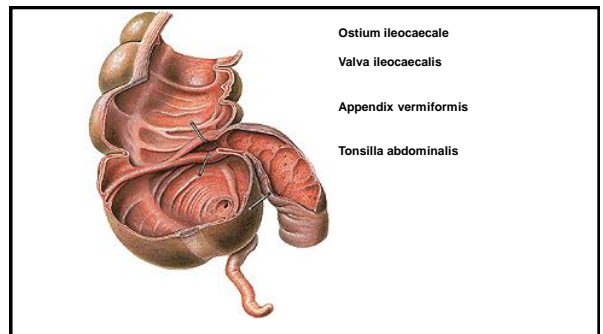
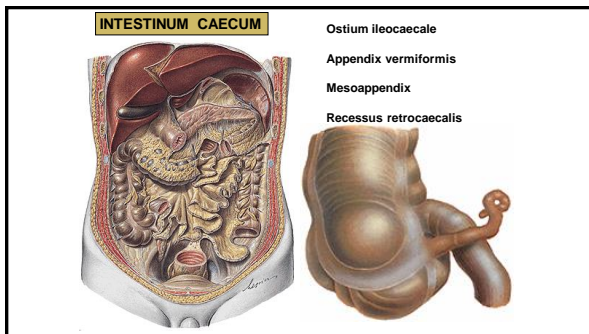
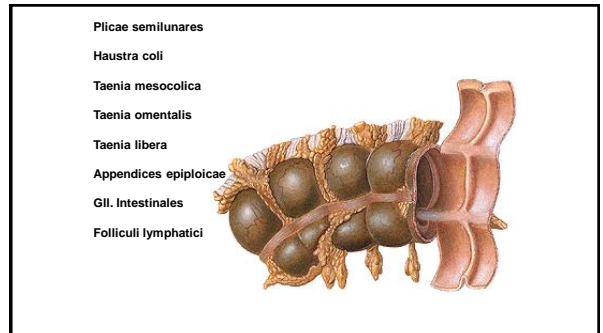
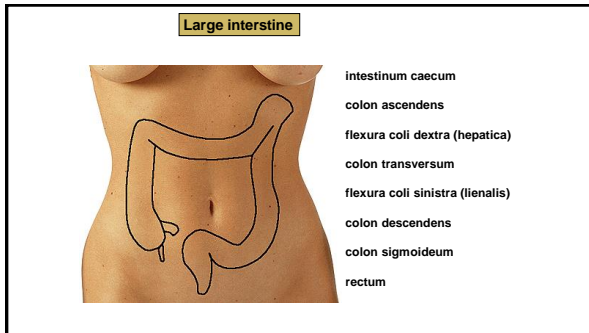
ductus choledochus  
(m. sphincter ductus choledochi)

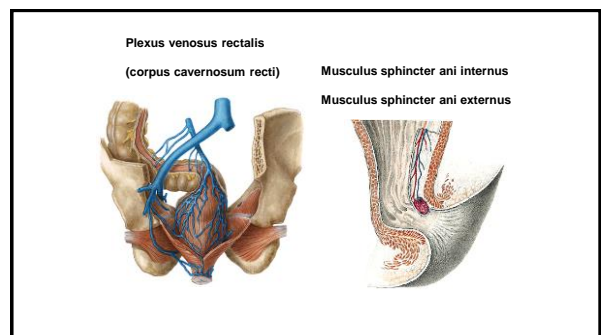
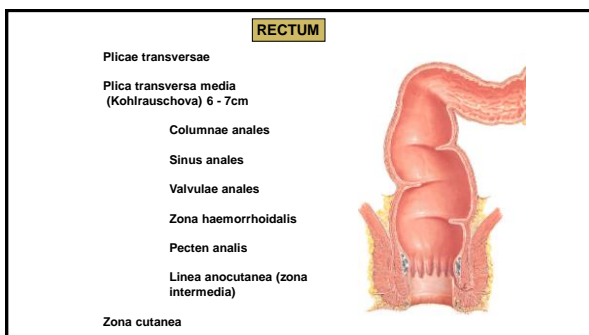
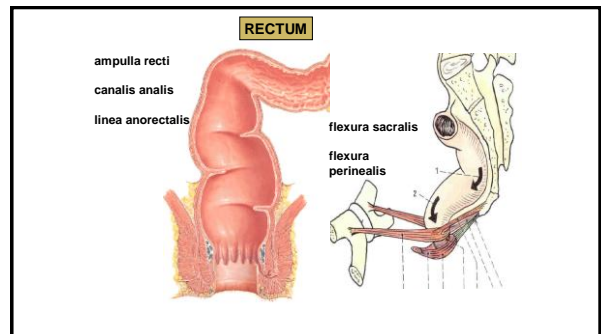
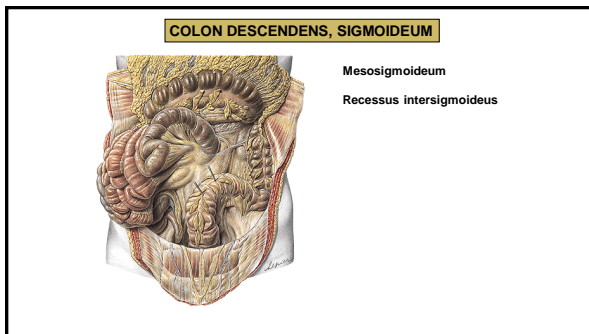
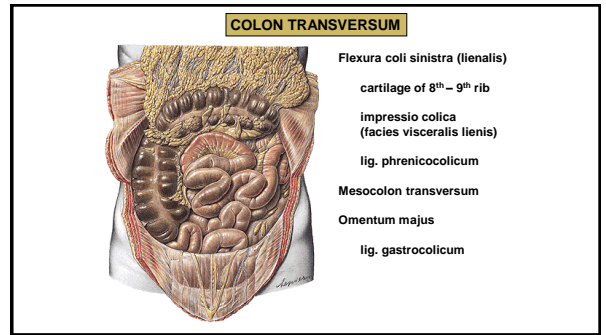
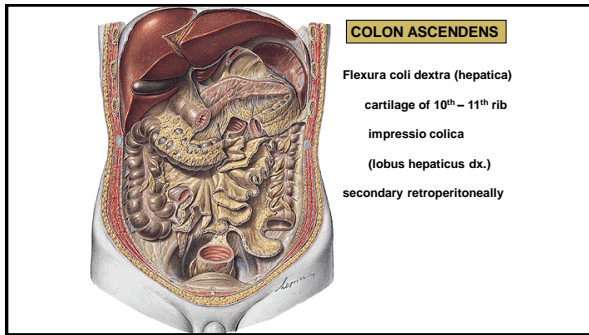
ductus pancreaticus major  
(m. sphincter ductus pancreatici)

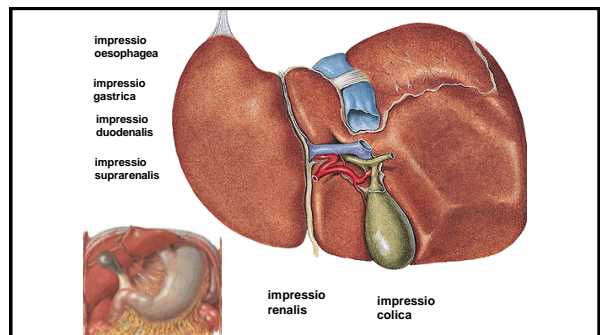
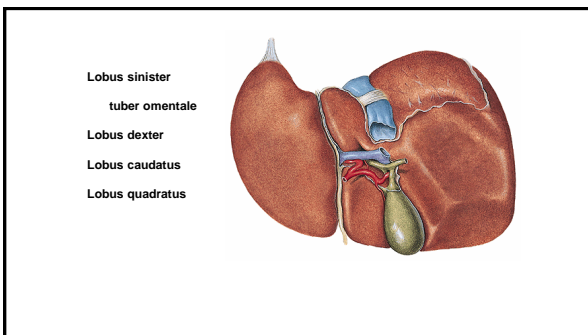
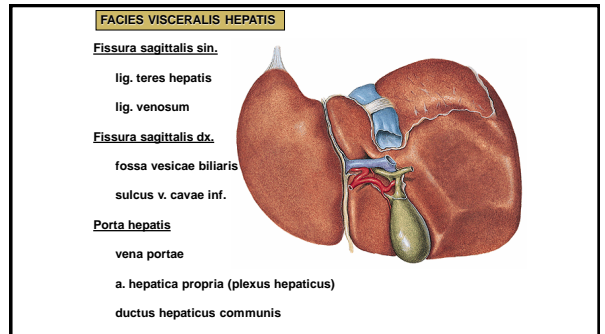
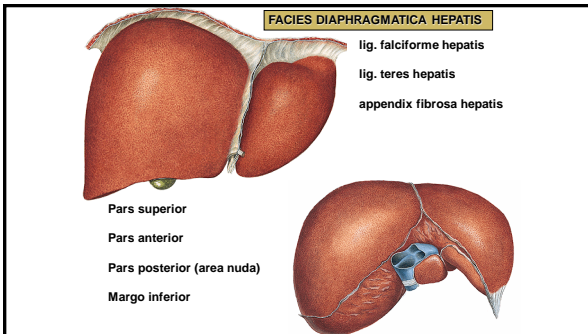
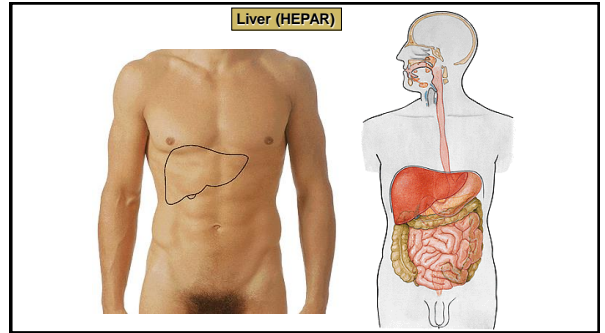
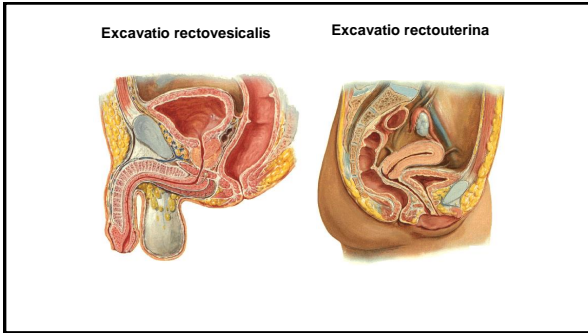
Papilla duodeni minor  
ductus pancreaticus accessorius



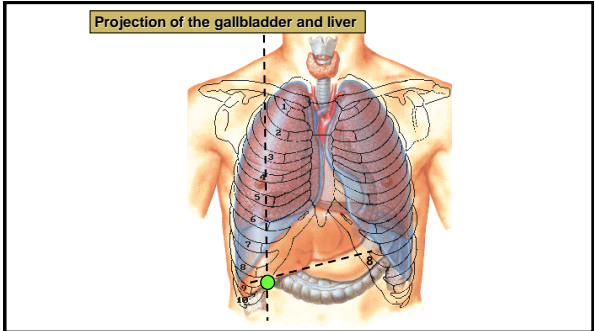
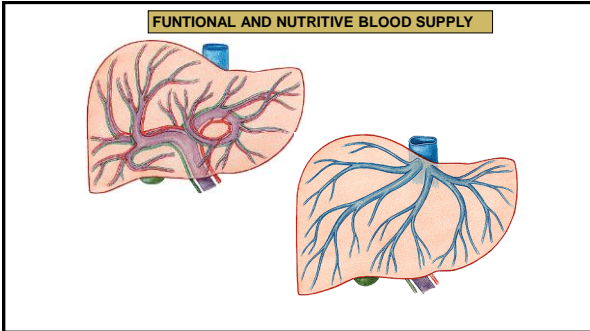
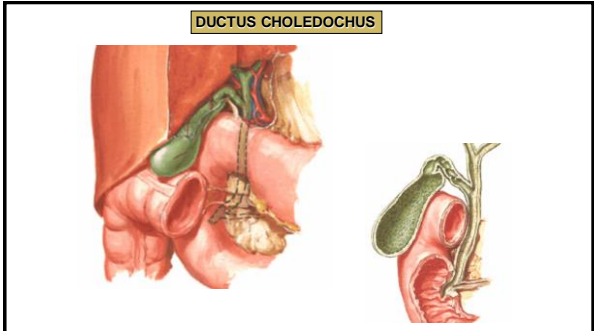
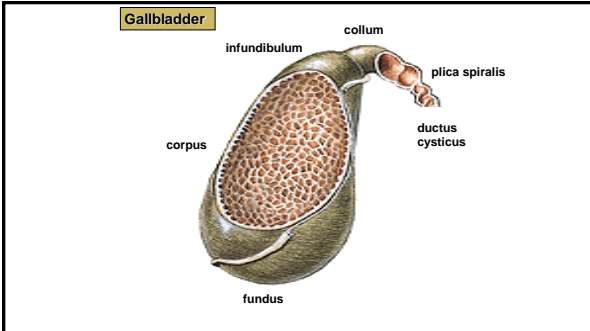
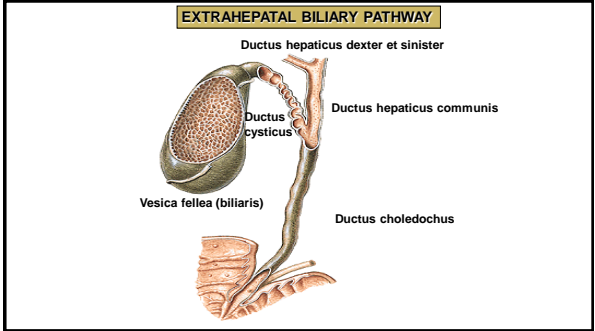
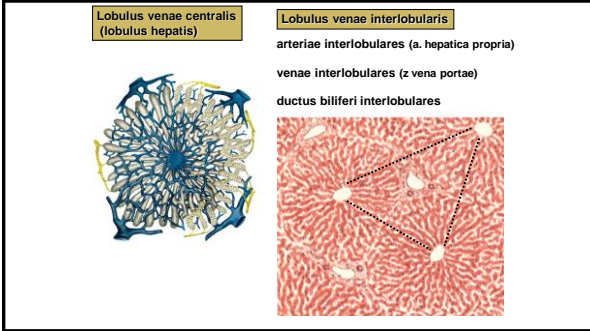


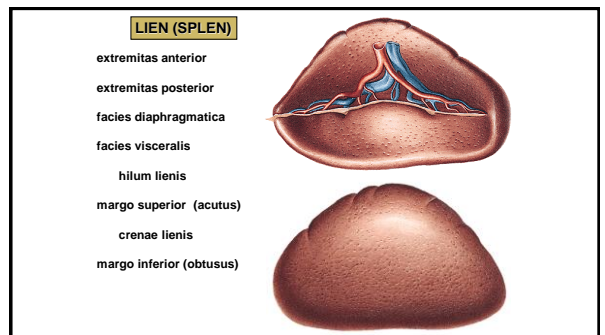
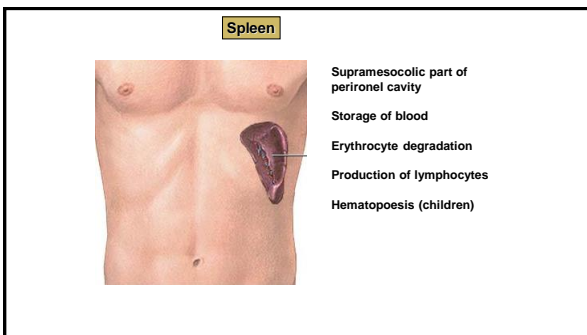
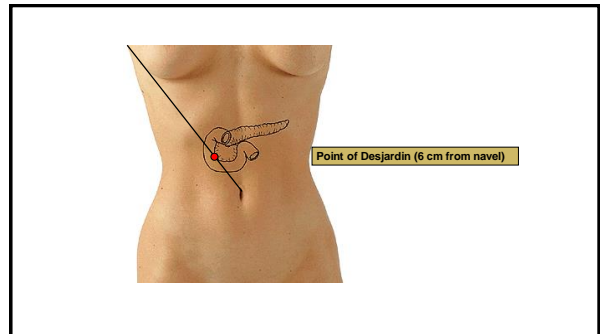
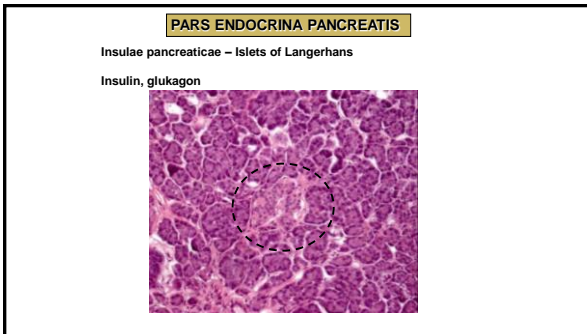
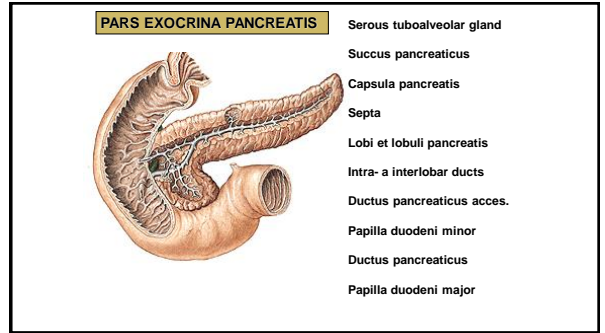
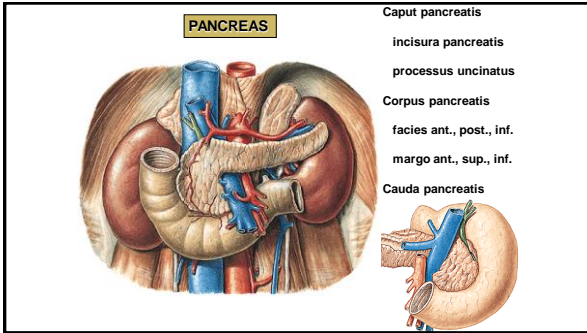


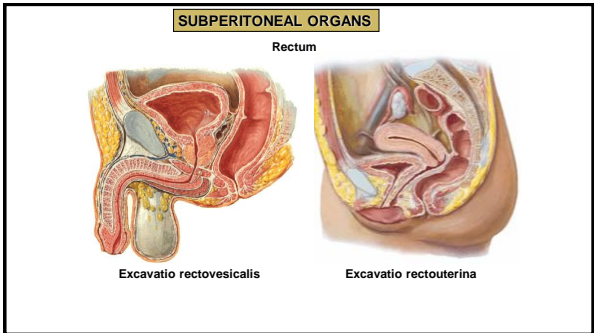
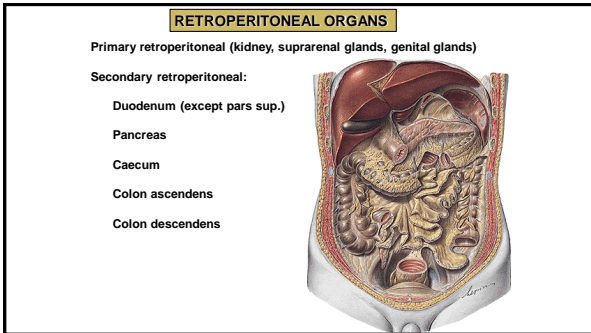
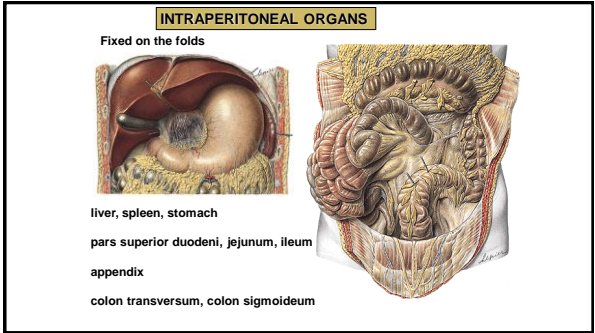
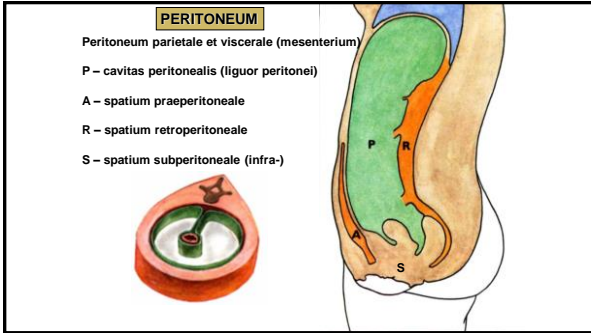
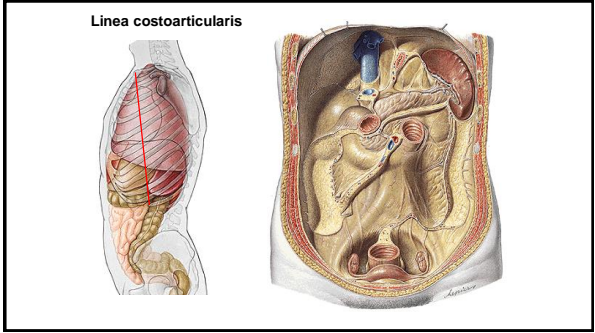
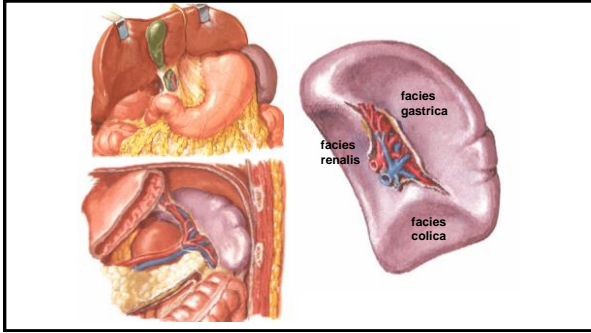






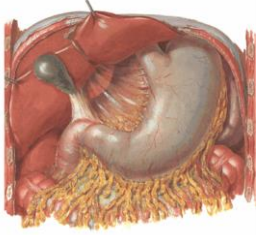




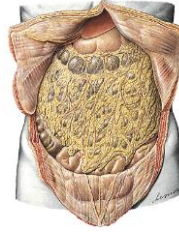




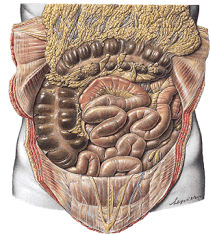
**PERITONEAL FOLDS OF STOMACH**



- Omentum minus**
- lig. hepatoduodenale
- lig. hepatogastricum
- lig. hepatoesophageum
- Omentum majus**
- lig. gastrocolicum
- Lig. gastrolieale**
- (lig. gastrosplenicum)



Omentum majus

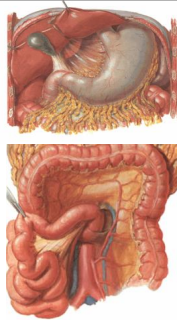


Lig. gastrocolicum

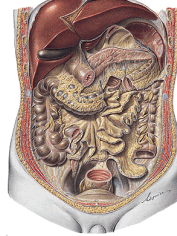
**MESOCOLON TRANSVERSUM**



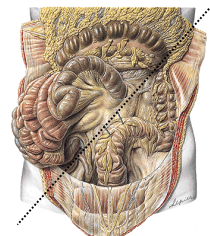
pars supramesocolica et inframesocolica



**MESENTERIUM**

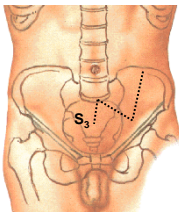
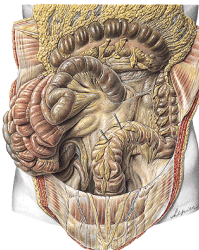


radix mesenterii

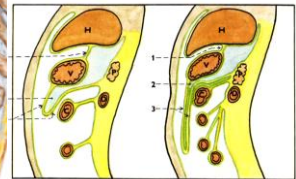
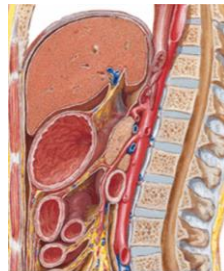


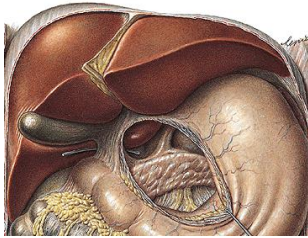
Pars inframesocolica dextra et sinistra

**MESOSIGMOIDEUM**

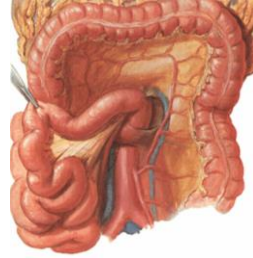


**BURSA OMENTALIS**

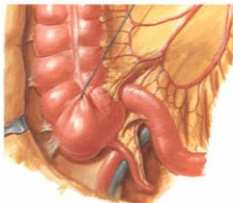


**Foramen epiploicum (omentale)**

lig. hepatoduodenale  
 plica hepatorrenalis  
 lobus quadratus  
 bulbus duodeni

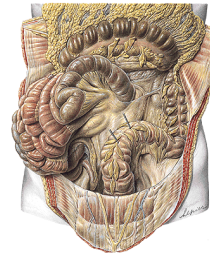
**Recessus duodenales**

Recessus duodenalis superior  
 Recessus duodenalis inferior  
 Recessus duodenalis sinister  
 (venosus, paroduodenalis)  
 Recessus retroduodenalis  
 (m. suspensorius duodeni)



Recessus retrocaecalis  
 Recessus paracolici

Recessus ileocaecalis superior  
 Recessus ileocaecalis inferior



Recessus intersigmoideus

**References:**

**Putz, R. (2008):**  
 Atlas of Human Anatomy Sobotta. Elsevier Books.

**Keith L. Moore, Arthur F. Dalley (2005):**  
 Clinically Oriented Anatomy. Williams and Wilkins.

**Platzer, W., Kahle, W., Leonhardt H. (1992):**  
 Locomotor system. Georg Thieme Verlag, Stuttgart,  
 New York, 4th edition.

**Čihák, R. (1987):**  
 Anatomie 1. Avicenum, Zdravotnické nakladatelství.

**Netter, F.H. (1997):**  
 Interactive Atlas of Clinical Anatomy. Novartis, USA.