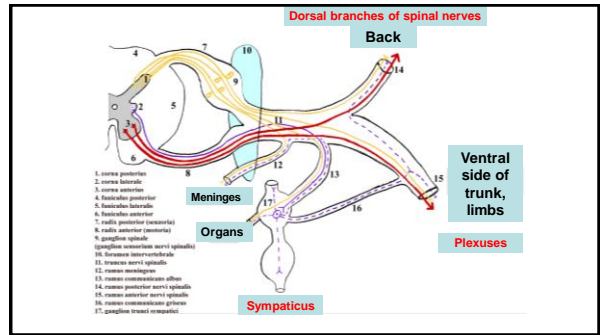
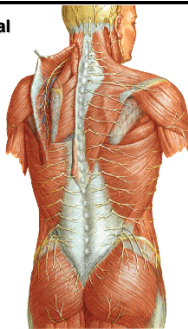


Dissection I

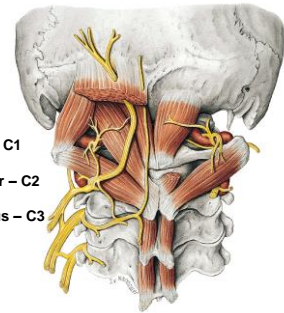


Dorsal branches of spinal nerves

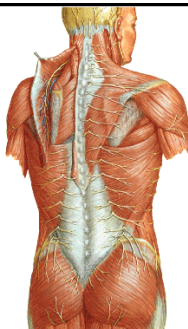
- Segmental organization
- Medial and lateral branch
- Sensory and motor



- N. suboccipitalis – C1
- N. occipitalis major – C2
- N. occipitalis tertius – C3



- Nervi clunium superiores
- Nervi clunium medii



PLEXUS BRACHIALIS

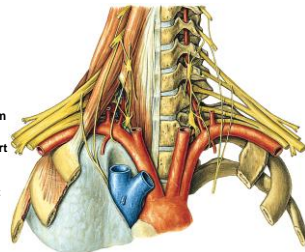
rami ventrales nervorum spinalium C₅ – Th₁

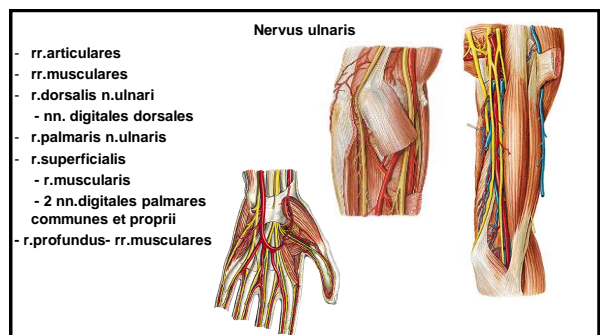
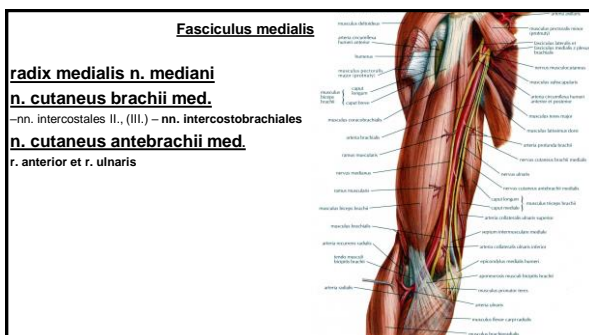
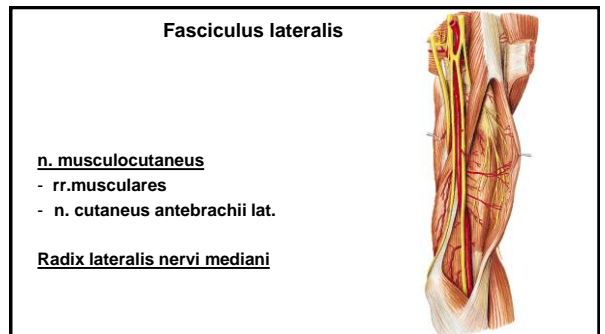
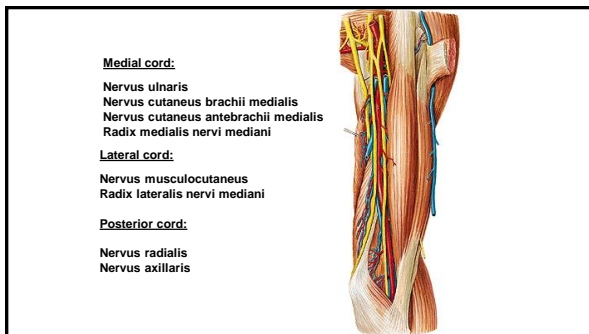
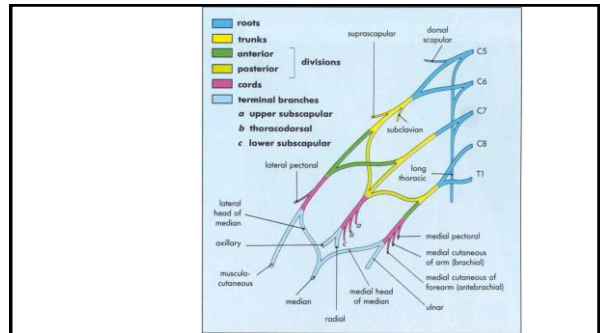
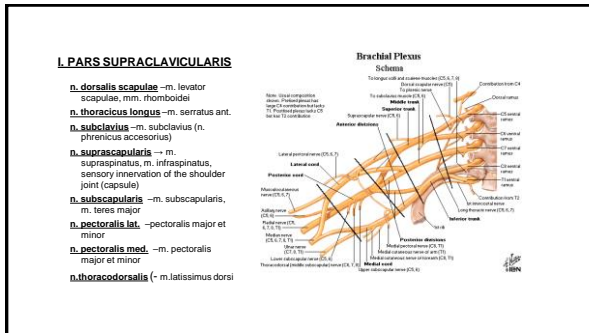
innervation of upper extremity, heterochtonic muscles of thorax and back

Fissura scalenorum

supraclavicular part

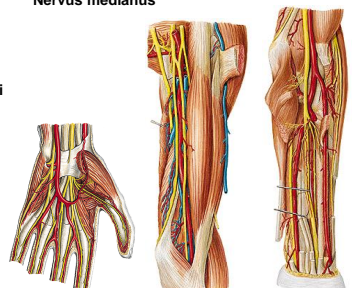
infraclavicular part





Nervus medianus

- rr. musculares
- rr. articulares
- n. interosseus antebrachii ant.
- r. palmaris
- r. thenaris
- nn. digitales palmares comm.- nn. digitales palmares proprii
- r. communicans cum n. ulnari



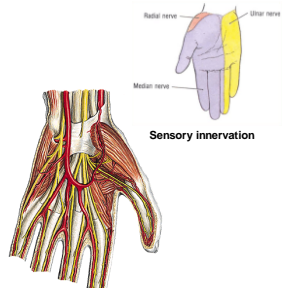
Innervation of the palmar side of hand

Nervus medianus:
Muscles of thenar (exceptions)

Nervus ulnaris:
Muscles of hypothenar

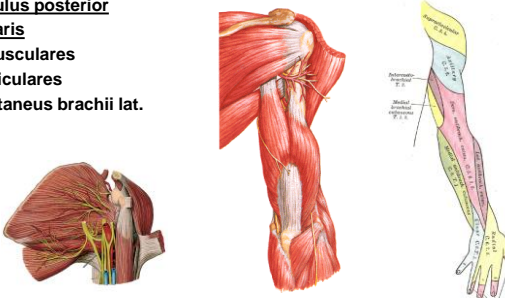
Musculi interossei
Musculi lumbricales 3-4
Musculus adductor pollicis
Caput profundum musculi flexoris pollicis brevis

Sensory innervation



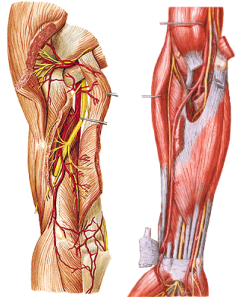
Fasciculus posterior
n. axillaris

- rr. musculares
- rr. articulares
- n. cutaneus brachii lat. sup.

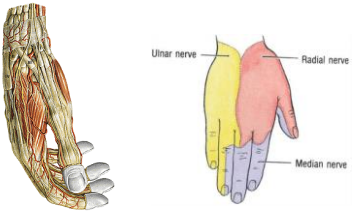


n. radialis

- rr. musculares
- n. cutaneus brachii lat. inf.
- n. cutaneus brachii post.
- n. cutaneus antebrachii post.
- r. profundus
- n. interosseus antebrachii post.
- r. superficialis
- n. digitales dorsales



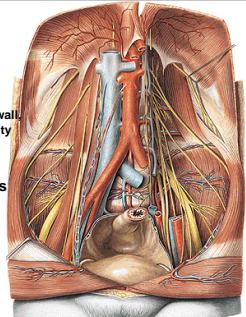
Innervation of the dorsal side of hand



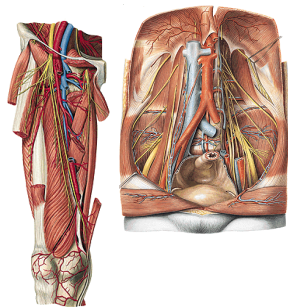
PLEXUS LUMBALIS

rami ventrales nervorum spinalium L₁ - L₄
innervation of abdominal wall and partially lower extremity

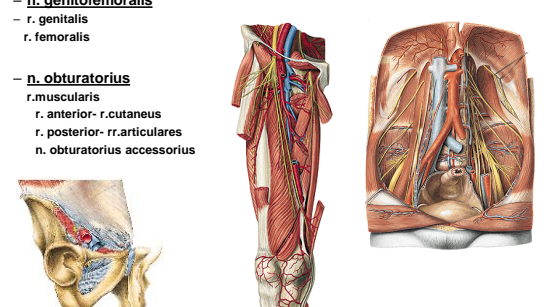
Nervus iliohypogastricus
Nervus ilioinguinalis
Nervus genitofemoralis
Nervus obturatorius
Nervus femoralis



- n. iliohypogastricus
r. muscularis
r. cutaneus lat. et anter.
- n. ilioinguinalis
r. muscularis
rr. scrotales (labiales) ant.
- n. cutaneus femoris lat.
- n. femoralis
rr. musculares
rr. cutanei ant.
n. saphenus - r. infrapatellaris,
rr. cutanei cruris med.



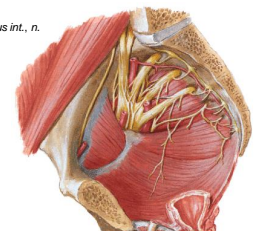
- n. genitofemoralis
r. genitalis
r. femoralis
- n. obturatorius
r. muscularis
r. anterior- r. cutaneus
r. posterior- r. articulares
n. obturatorius accessorius



PLEXUS SACRALIS

rami ventrales nervorum
spinalium L₄ - S₅

rr. musculares: n. piriformis, n. obturatorius int., n. quadratus femoris, mm. gemelli,
Nervus gluteus superior
Nervus gluteus inferior
Nervus pudendus
Nervus cutaneus femoris posterior
Nervus ischiadicus

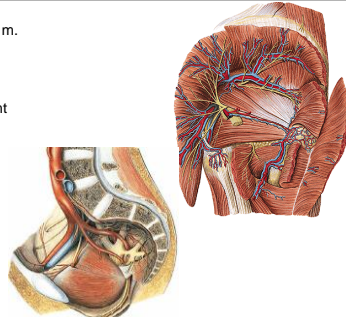


n. gluteus sup.
- m. gluteus medius et minimus, m. tensor fasciae latae

n. gluteus inf. - m. gluteus maximus, joint capsule - hip joint

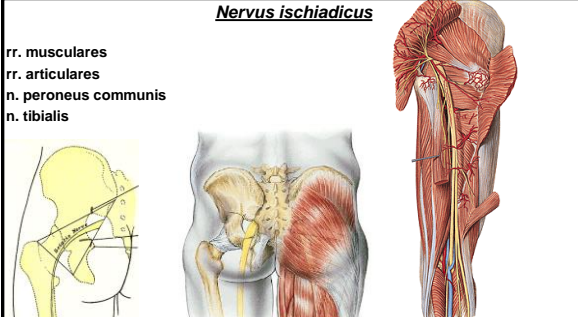
n. cutaneus femoris post.-

- rr. perineales
- nn. clunium inf.
- rr. cutanei



Nervus ischiadicus

rr. musculares
rr. articulares
n. peroneus communis
n. tibialis



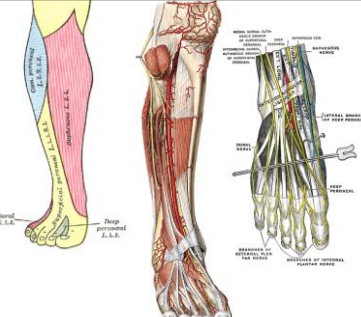
n. peroneus comm.

rr. articulares
n. cutaneus surae lat.-

r. communicans peroneus -> n. suralis

n. peroneus spfc.
- rr. musculares-
- n. cutaneus dorsalis medialis - nn. digitales dorsales pedis.
- n. cutaneus dorsi pedis intermedius - nn. digitales dors. ped.

n. peroneus prof.
- n. digitalis dorsalis hallucis lat.
- n. digitalis dorsalis digiti secundi medialis
- rr. musculares



n. tibialis
rr. musculares
n. interosseus cruris
n. cutaneus surae med. → *r. communicans peroneus*
n. suralis
 - *rr. calcanei lat.*
 - *n. cutaneus dorsalis*
 - *rr. calcanei med.*
n. plantaris med.
 - *rr. musculares*- m. abductor hall., m. flexor dig. brevis
 - *nn. digitales plantares comm. et proprii*
 - *n. digitalis plantaris proprii hallucis*
n. plantaris lat.
 - *rr. musculares*- m. quadratus plantae, m. flexor dig. V.
 - *r. superficialis* - *nn. digitales plantares proprii*
 - *r. profundus* - *mm. interossei* 3., 4., *m. lumbicalis*, *m. adductor hallucis*, *m. opponens dig. V.*

n. pudendus
nn. rectales inf.
nn. perineales
nn. scrotales (labiales) post. –
rr. musculares – m. levator ani, m. coccygeus
n. dorsalis penis (clitoridis)

ARTERIA SUBCLAVIA

Pars intrascalenica:

- a. vertebralis
- a. thoracica interna
- tr. thyreocervicalis

Pars interscalenica:

- tr. costocervicalis

Pars extrascalenica:

- a. transversa colli

TRUNCUS THYREOCERVICALIS

- a. thyroidea inf.
- a. cervicalis ascendens
- a. cervicalis spf.
- a. suprascapularis

ARTERIA TRANSVERSA COLLI

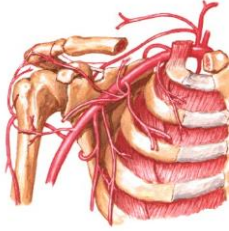
- r. ascendens (superficialis)
- r. descendens (profundus) = a. dorsalis scapulae

ARTERIES OF THE UPPER EXTREMITY

- a. axillaris
- a. brachialis
- a. radialis
- a. ulnaris

ARTERIA AXILLARIS

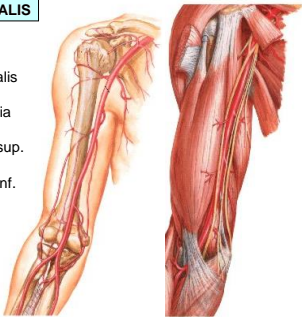
- rr. subscapulares
- a. thoracica suprema
- a. thoracoacromialis
- a. thoracica lateralis
- a. subscapularis
 - a. thoracodorsalis
 - a. circumflexa scapulae
- a. circumflexa humeri ant.
- a. circumflexa humeri post.

**ARTERIA AXILLARIS**

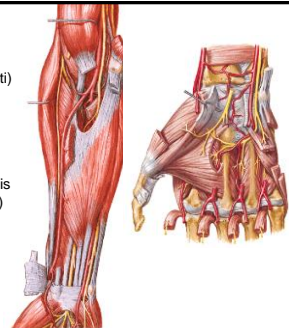
- A. CIRCUMFLEXA SCAPULAE
 - foramen omotricipitale
 - m. teres minor
 - m. teres major
 - caput longum m. tricipitis brachii
- A. CIRCUMFLEXA HUMERI POST.
 - foramen humerotricipitale
 - m. teres minor
 - m. teres major
 - caput longum m. tricipitis brachii
 - humerus

**ARTERIA BRACHIALIS**

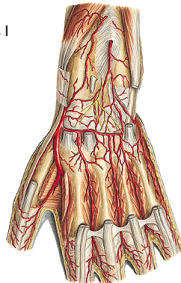
- a. profunda brachii
 - a. collateralis radialis
 - a. collateralis media
- a. collateralis ulnaris sup.
- a. collateralis ulnaris inf.
- a. radialis
- a. ulnaris

**A. RADIALIS**

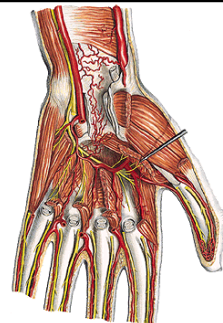
- a. recurrens radialis (rete articulare cubiti)
- rr. musculares
- r. carpeus palmaris
- r. palmaris superficialis (arcus palmaris spf.)

**A. RADIALIS**

- a. metacarpea dorsalis I
- r. carpeus dorsalis
- rete carpi dorsale (3 aa. metacarpeae dorsales, aa. digitales dorsales)

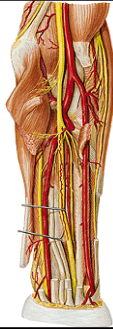
**A. RADIALIS**

- a. princeps pollicis
- r. palmaris profundus (arcus palmaris prof.)

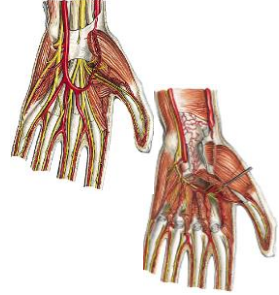


A. ULNARIS

- a. recurrens ulnaris
(rete articulare cubiti)
- rr. musculares
- a. interossea communis
 - a. interossea ant.
 - a. interossea post.
(a. recurrens interossea)

**A. ULNARIS**

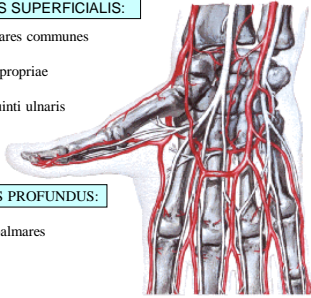
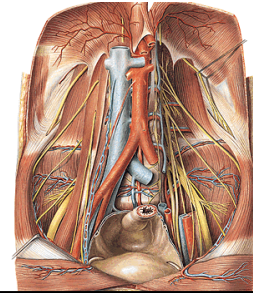
- r. carpeus palmaris
(rete carpi palmare)
- r. carpeus dorsalis
(rete carpi dorsale)
- r. palmaris prof.
(arcus palmaris prof.)
- r. palmaris spf.
(arcus palmaris spf.)

**ARCUS PALMARIS SUPERFICIALIS:**

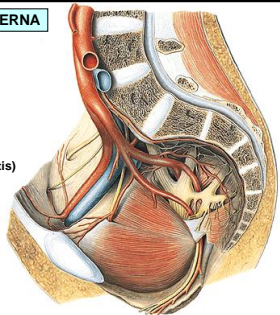
- 3 aa. digitales palmares communes
- 2 aa. dig. palmares propriae
- a. palmaris digiti quinti ulnaris

ARCUS PALMARIS PROFUNDUS:

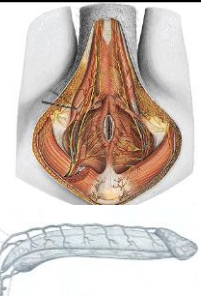
- aa. metacarpeae palmares
- rr. perforantes

**ARTERIA ILIACA COMMUNIS****A. iliaca externa****A. iliaca interna**(bifurcatio aortae L₄)**ARTERIA ILIACA INTERNA****Parietal branches**

- a. iliolumbalis
- a. sacralis lat.
- a. obturatoria
(r. pubicus - corona mortis)
- a. glutea sup.
- a. glutea inf.
- a. pudenda interna

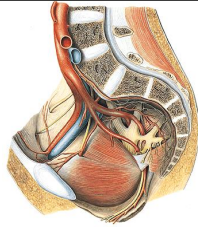
**ARTERIA PUDENDA INTERNA**

- a. rectalis inf.
- a. perinealis – rr. scrotales post.
(rr. labiales post.)
- a. penis (a. clitoridis)
 - a. profunda penis (clitoridis)
 - a. dorsalis penis (clitoridis)



ARTERIA ILIACA EXTERNA

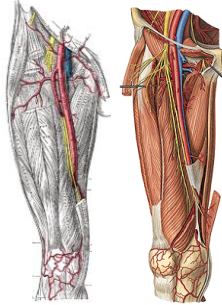
- a. epigastrica inf.
- r. pubicus (corona mortis)
- a. cremasterica (a. ligamenti teretis)
- a. circumflexa ilium profunda

**ARTERIES OF THE LOWER EXTREMITY**

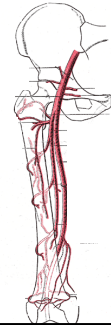
- a. femoralis (lacuna vasorum, trigonum femorale, canalis adductorius, hiatus tendineus)
- a. poplitea (fossa poplitea)
- a. tibialis anterior (a. dorsalis pedis)
- a. tibialis posterior (malleolus medialis, a. plantaris medialis, a. plantaris lateralis)

**ARTERIA FEMORALIS**

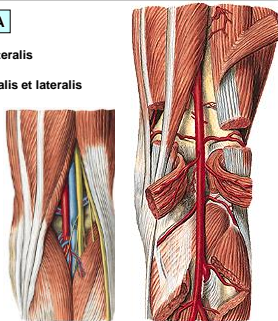
- A. epigastrica spf.
- A. circumflexa ilium spf.
- Aa. pudendae ext.
- A. profunda femoris
- Rr. musculares
- A. genus descendens

**ARTERIA PROFUNDA FEMORIS**

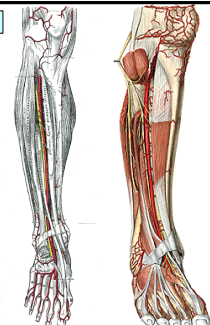
- A. circumflexa femoris medialis (r. superficialis et profundus)
- A. circumflexa femoris lat. (r. ascendens et descendens)
- A. perforans prima (a. nutritia femoris sup.)
- A. perforans secunda
- A. perforans tertia (a. nutritia femoris inf.)

**ARTERIA POPLITEA**

- A. suralis medialis et lateralis
- A. genus superior medialis et lateralis
- A. genus media
- A. genus inferior medialis et lateralis
- A. tibialis ant.
- A. tibialis post.

**ARTERIA TIBIALIS ANTERIOR**

- A. recurrens tibialis post.
- A. recurrens tibialis ant.
- Rr. musculares
- A. malleolaris ant. med. et lat.
- A. dorsalis pedis



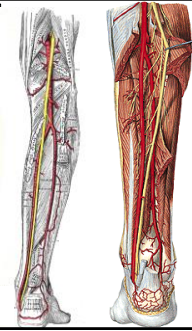
ARTERIA DORSALIS PEDIS

- Aa. tarseae med.
- A. tarsea lat.
(a. digitalis dorsalis V.)
- A. arcuata
(3 aa. metatarsae dorsales,
aa. digitales dorsales)
- R. plantaris prof.
- A. metatarsa dorsalis prima
- aa. digitales dorsales



ARTERIA TIBIALIS POSTERIOR

- R. circumflexus fibulae
- A. peronea (fibularis)
- Rr. musculares
- A. nutritia tibiae
- Rr. malleolares med.
- Rr. calcanei med.
- A. plantaris lat.
- A. plantaris med.

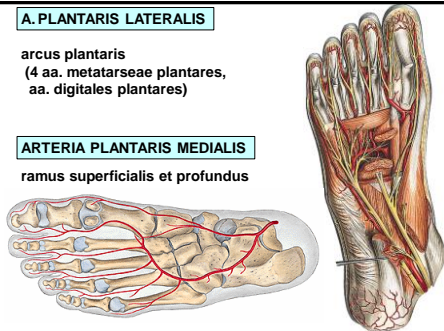


A. PLANTARIS LATERALIS

- arcus plantaris
(4 aa. metatarsae plantares,
aa. digitales plantares)

ARTERIA PLANTARIS MEDIALIS

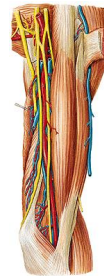
- ramus superficialis et profundus

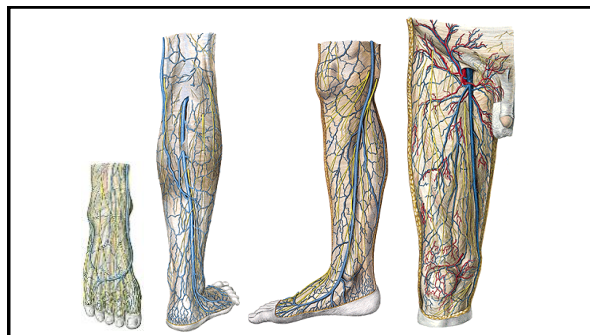
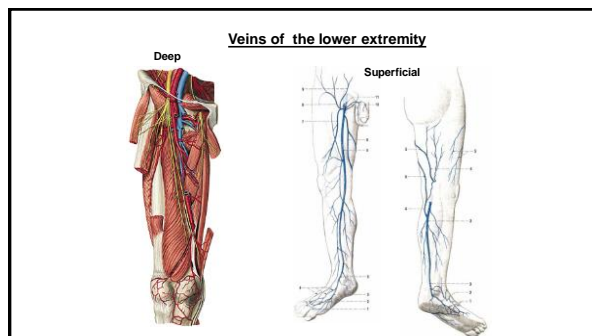


Veins of the upper extremity

Deep

Superficial





References:

Putz, R. (2008):
Atlas of Human Anatomy Sobotta. Elsevier Books.

Keith L. Moore, Arthur F. Dalley (2005):
Clinically Oriented Anatomy. Williams and Wilkins.

Platzer, W., Kahle, W., Leonhardt H. (1992):
Locomotor system. Georg Thieme Verlag,
Stuttgart,
New York, 4th edition.

Čihák, R. (1987):
Anatomie 1. Avicenum, Zdravotnické