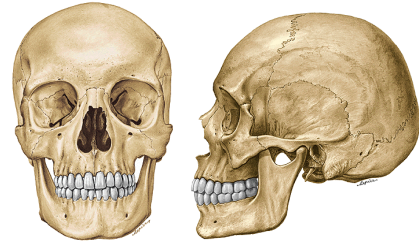


# Neurocranium

## Skull (cranium)

Neurocranium et splanchnocranium

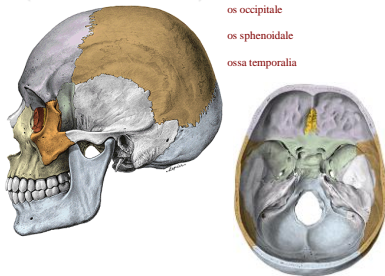


norma frontalis

norma lateralis

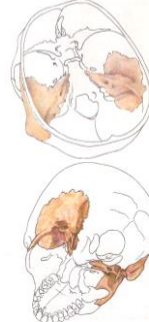
## Neurocranium (calvarium et basis cranii)

- os frontale
- ossa parietalia
- os occipitale
- os sphenoidale
- ossa temporalia



## Os temporale

- Pars squamosa
- Pars petrosa (pyramis)
- Pars mastoidea
- Pars tympanica
- Processus styloideus (pars hyoidea)



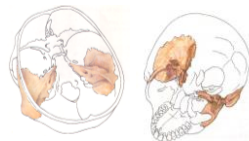
## Pars squamosa ossis temporalis

- processus zygomaticus
- linea temporalis inferior
- crista supramastoidea
- spina suprameatum
- fossa mandibularis
- tuberculum articulare
- sulci arteriosi
- juga cerebralia
- impressiones gyrorum



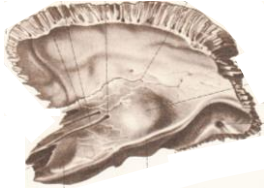
## Pars petrosa (pyramis)

- Facies anterior (cerebralis) pyramidis
- Facies posterior
- Facies inferior
- Facies ventrobasis (auditory organ)

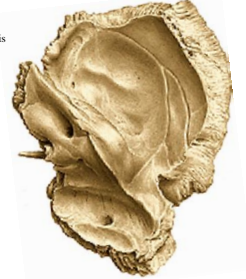


**Facies anterior pyramidis**

foramen lacerum  
 apex pyramidis  
 impressio trigemini  
 canalis musculotubarius  
 apertura interna canalis carotici  
 eminentia arcuata  
 tegmen tympani  
 hiatus canalis nervi petrosi majoris et minoris  
 sulcus nervi petrosi majoris et minoris

**Facies posterior pyramidis**

margo superior - crista pyramidis  
 sulcus sinus petrosi superioris et inferioris  
 porus acusticus internus  
 meatus acusticus internus  
 fundus meatus acustici interni (introitus canalis nervi facialis)  
 fossa subarcuata  
 apertura externa aquaeductus vestibuli  
 incisura jugularis (foramen jugulare)  
 apertura externa canaliculi cochleae  
 sulcus sinus sigmoidei

**Facies inferior pyramidis**

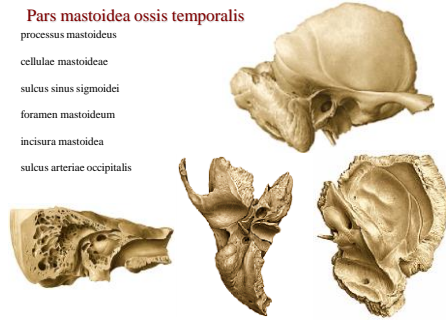
apertura externa canalis carotici  
 fossa jugularis  
 canaliculus mastoideus  
 apertura externa canaliculi tympanici (fossula petrosa)

**Processus styloideus**

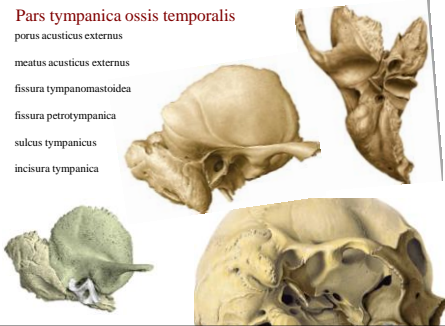
Foramen stylomastoideum

**Pars mastoidea ossis temporalis**

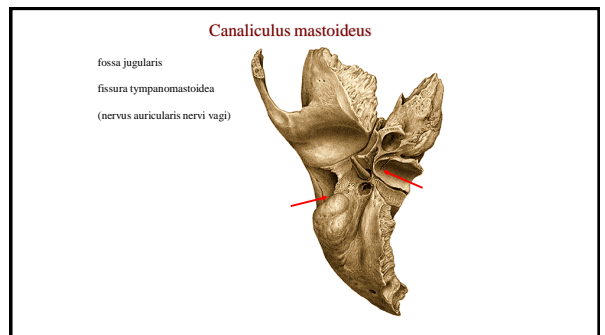
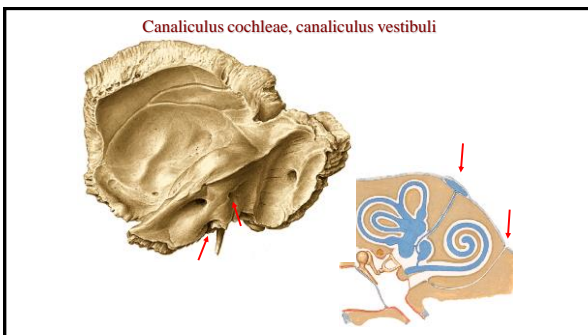
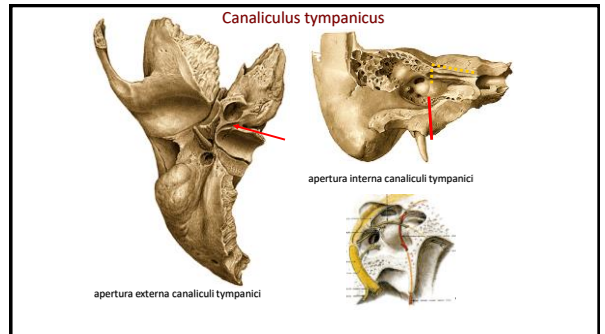
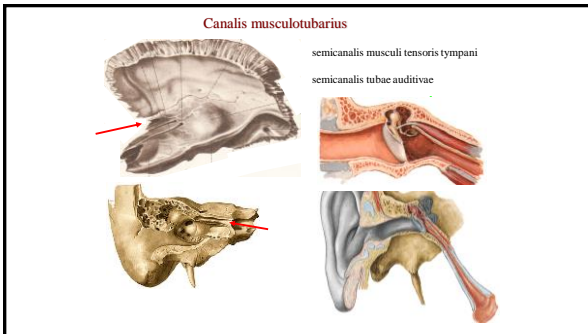
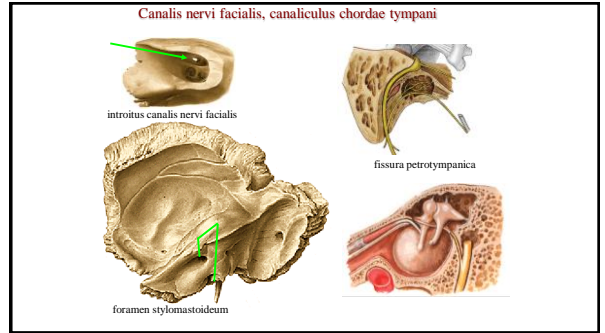
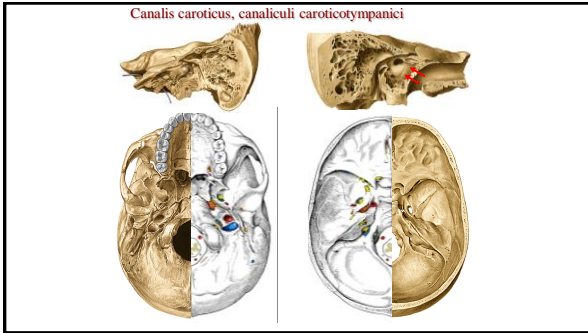
processus mastoideus  
 cellulae mastoideae  
 sulcus sinus sigmoidei  
 foramen mastoideum  
 incisura mastoidea  
 sulcus arteriae occipitalis

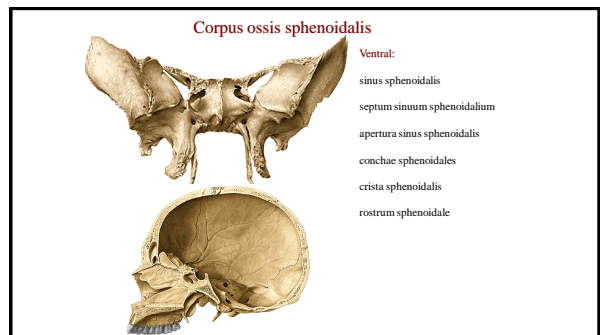
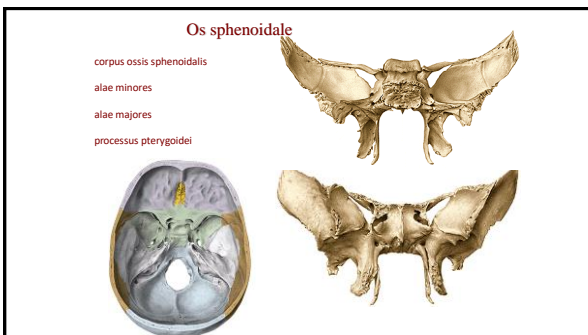
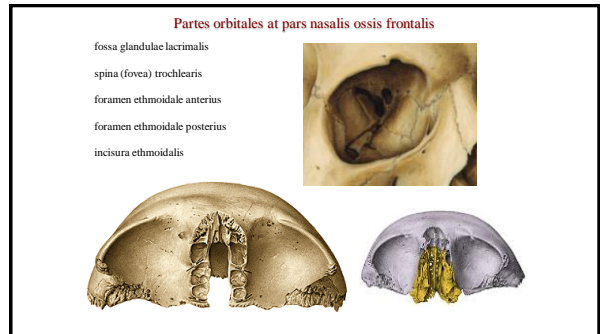
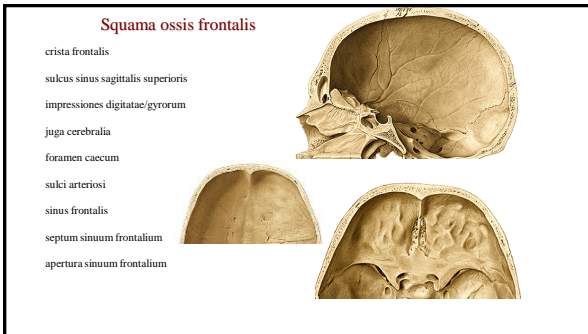
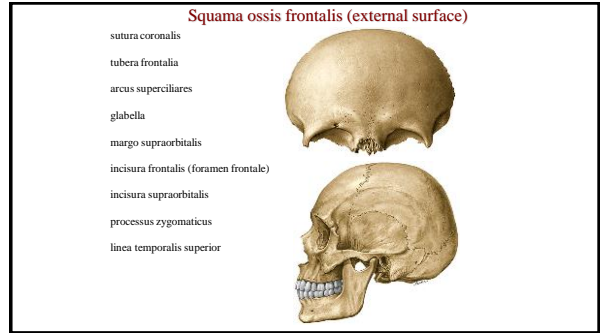
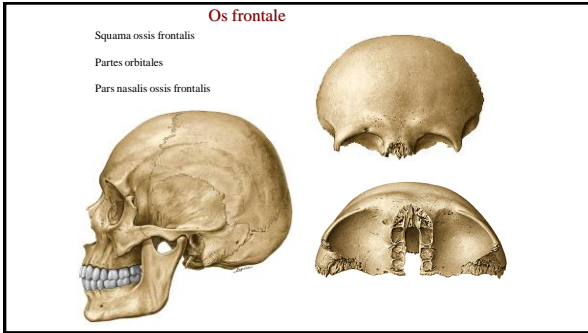
**Pars tympanica ossis temporalis**

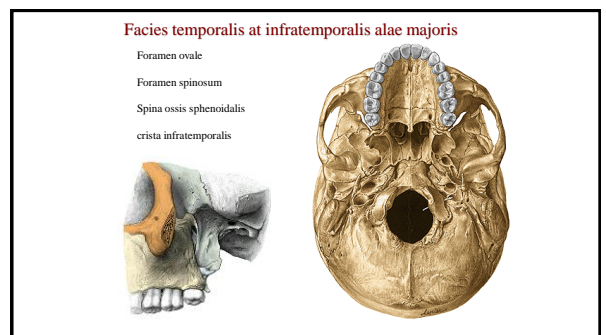
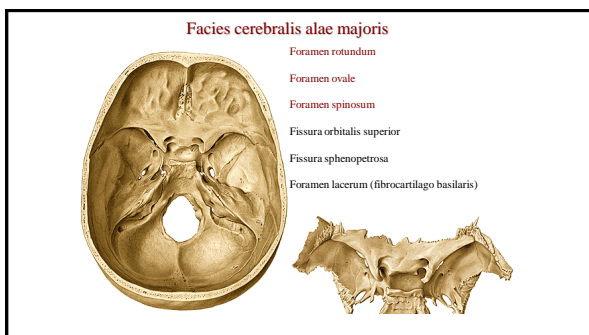
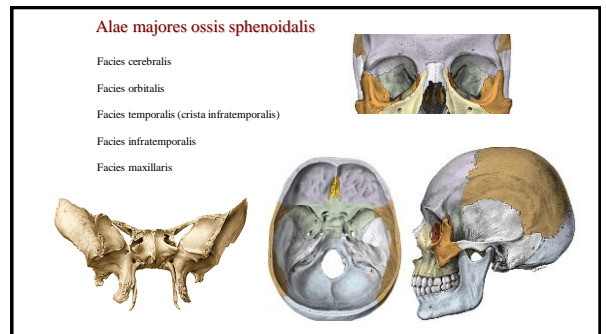
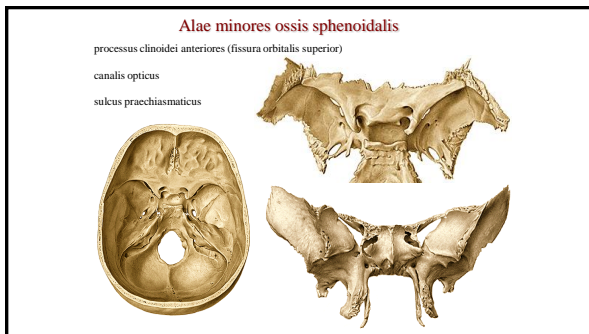
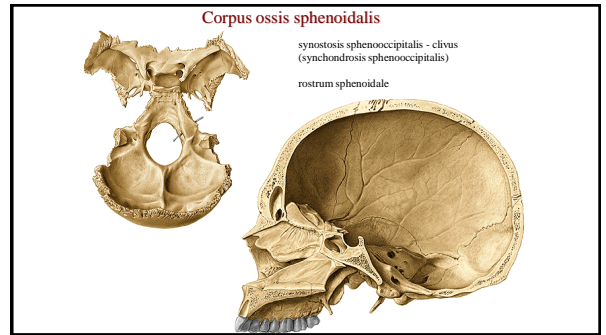
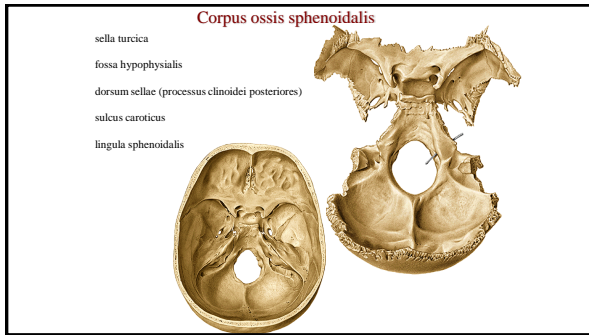
porus acusticus externus  
 meatus acusticus externus  
 fissura tympanomastoidea  
 fissura petrotympanica  
 sulcus tympanicus  
 incisura tympanica

**Temporal bone canals**

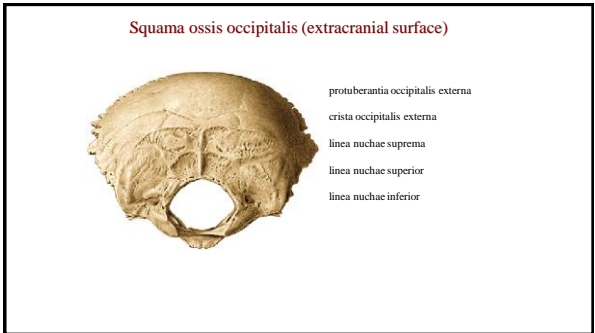
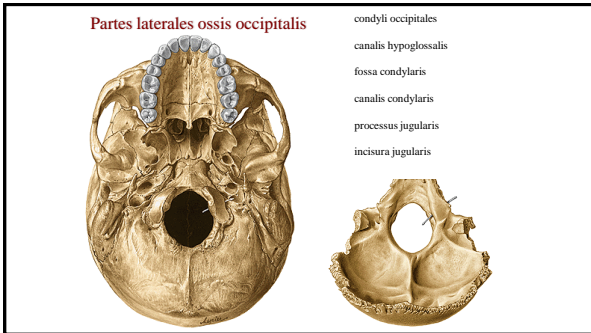
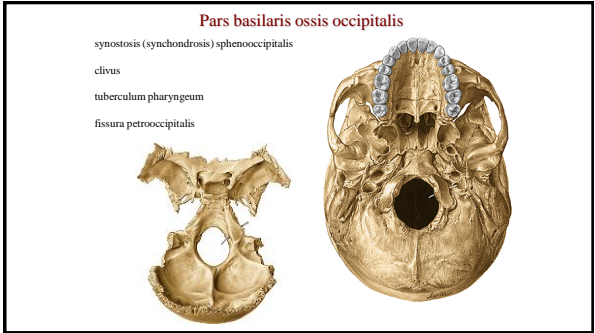
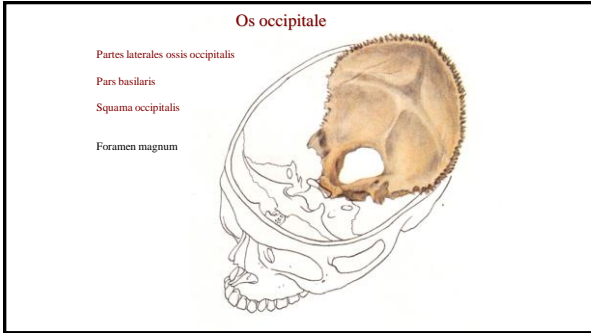
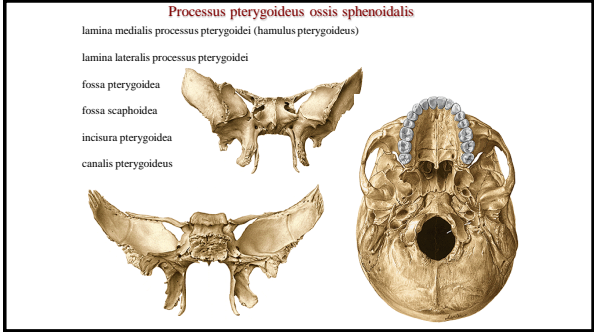
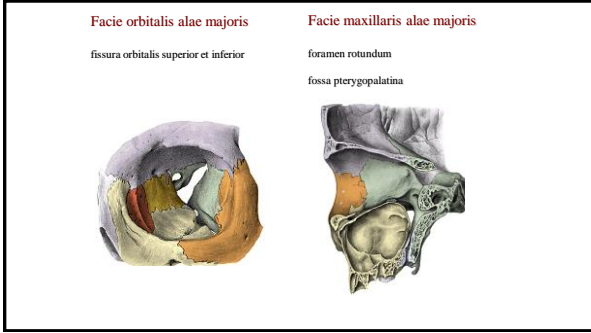
1. canalis caroticus
2. canaliculi caroticotympanici
3. canalis nervi facialis
4. canalis musculotubarius
5. canaliculus chordae tympani
6. canaliculus tympanicus
7. canaliculus cochleae
8. canaliculus vestibuli
9. canaliculus mastoideus











### Squama ossis occipitalis (intracranial surface)



protuberantia occipitalis interna  
 eminentia cruciformis  
 sulcus sinus sagittalis superioris  
 sulcus sinus transversi  
 sulcus sinus sigmoidei  
 crista occipitalis interna  
 fossae cerebrales  
 fossae cerebellares



angulus frontalis  
 angulus sphenoidalis  
 angulus occipitalis  
 angulus mastoideus

sulci arteriae meningae mediae  
 sulcus sinus sagittalis superioris  
 foveolae granulares  
 sulcus sinus sigmoidei

#### References:

[Putz, R. \(2008\):](#)  
 Atlas of Human Anatomy Sobotta. Elsevier Books.

[Keith L. Moore, Arthur F. Dalley \(2005\):](#)  
 Clinically Oriented Anatomy. Williams and Wilkins.

[Platzer, W., Kahle, W., Leonhardt H. \(1992\):](#)  
 Locomotor system. Georg Thieme Verlag, Stuttgart,  
 New York, 4th edition.

[Čihák, R. \(1987\):](#) Anatomie I. Avicenum, Zdravotnické nakladatelství.