

SKELETON OF THE LOWER EXTREMITY

(ossa membri inferioris)

Lower extremity

- organ of the locomotion
- more robust constitution than the upper extremity
- limited range of movements
- posture – centroid S₂
- pelvis and the vertebral column – functional unit
- the most developmental changes - foot

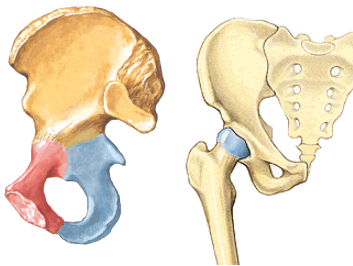


Skeleton of the pelvic girdle

(Cingulum membri inferioris)

Os coxae (hip bone)

- os ilium
- os ischii
- os pubis



Skeleton of the free extremity

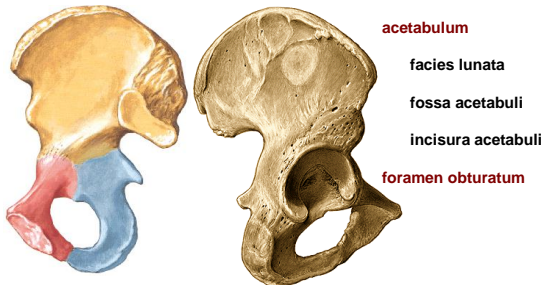
(Ossa membri inferioris liberi)

- Femur
- Patella
- Tibia
- Fibula
- Ossa tarsi
- Ossa metatarsi
- Ossa digitorum pedis, phalanges



Os coxae (hip bone)

(os ilium, os pubis, os ischii)

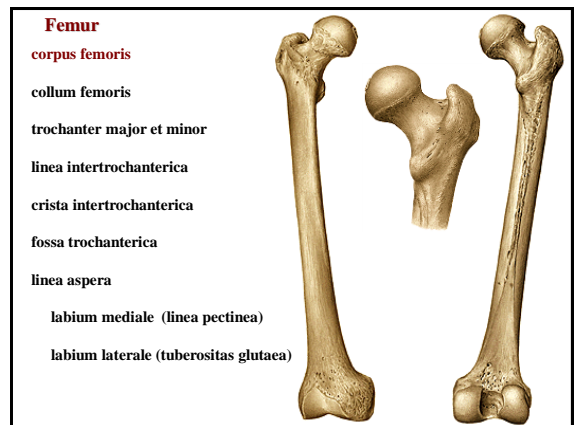
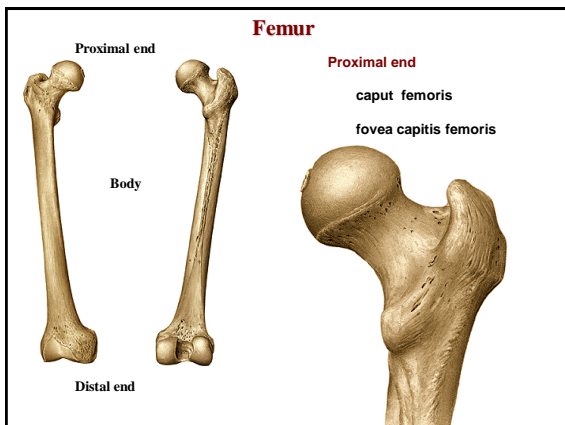
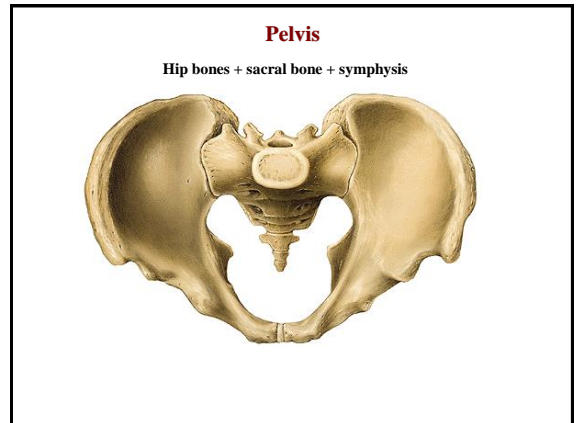
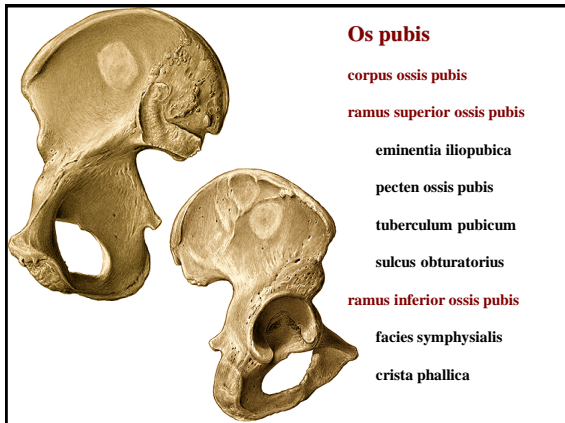
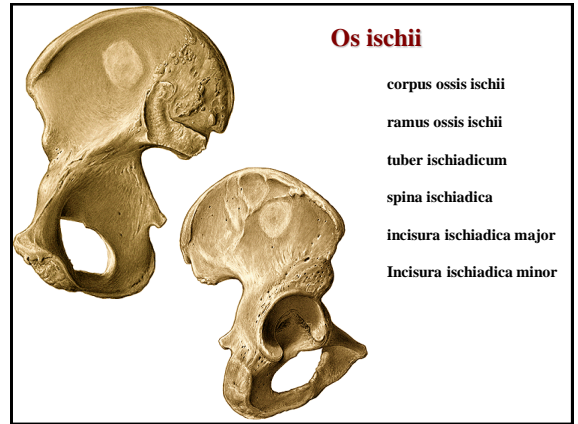
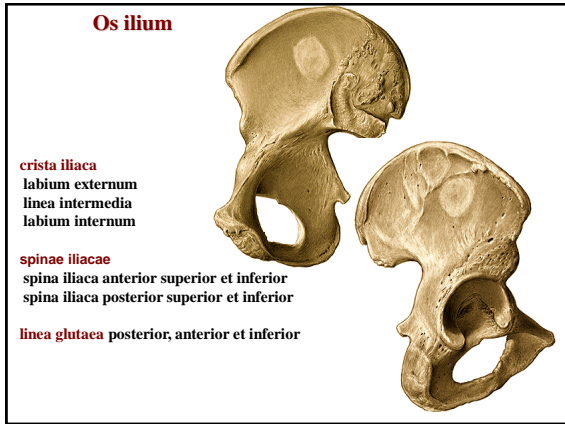


- acetabulum
- facies lunata
- fossa acetabuli
- incisura acetabuli
- foramen obturatum

Os ilium


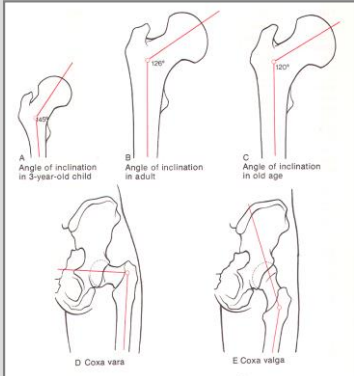
- corpus ossis ilii
- ala ossis ilii
- fossa iliaca
- facies auricularis
- tuberositas iliaca
- linea arcuata
- sulcus praeauricularis





Distal end

- condylus medialis
- condylus lateralis
- epicondylus medialis
- epicondylus lateralis
- facies patellaris
- fossa intercondylaris
- linea intercondylaris
- facies poplitea (planum popliteum)

A Angle of inclination in 3-year-old child

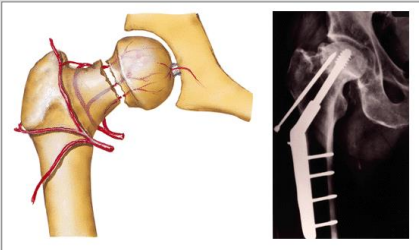
B Angle of inclination in adult

C Angle of inclination in old age

D Coxa vara

E Coxa valga

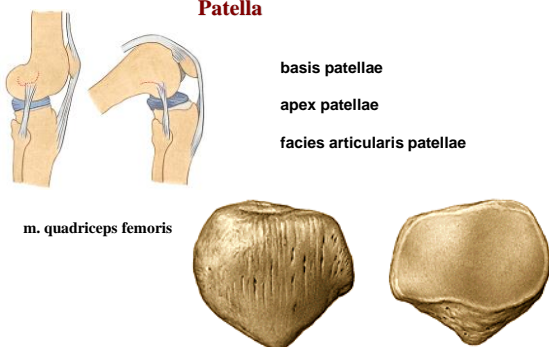
Femoral head fracture



Patella

- basis patellae
- apex patellae
- facies articularis patellae

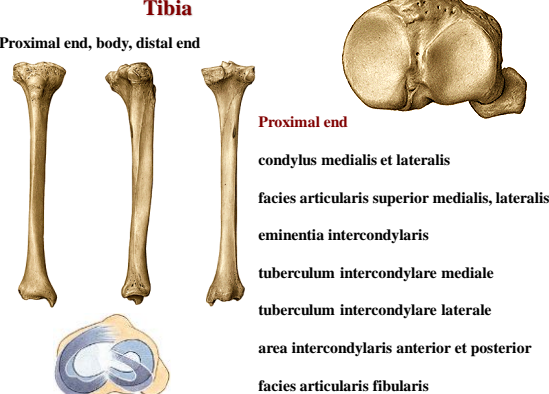
m. quadriceps femoris

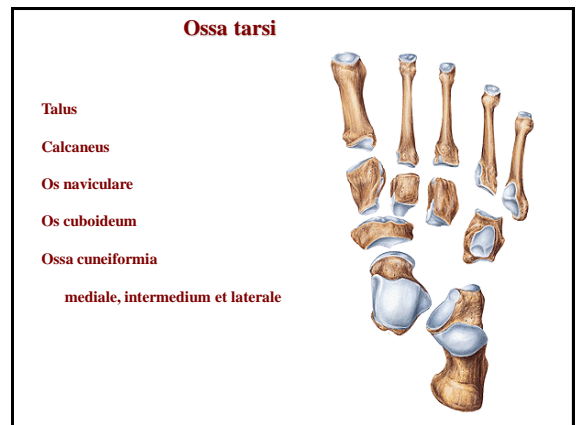
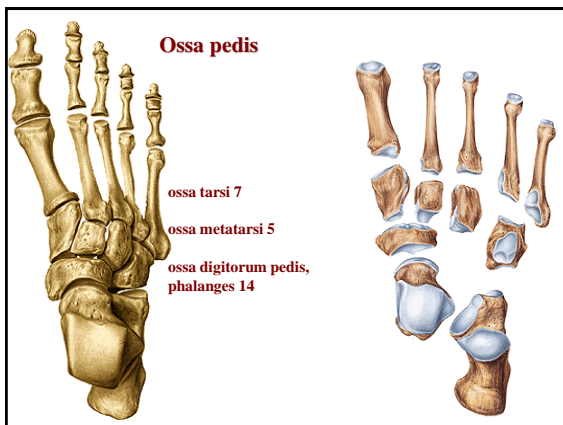
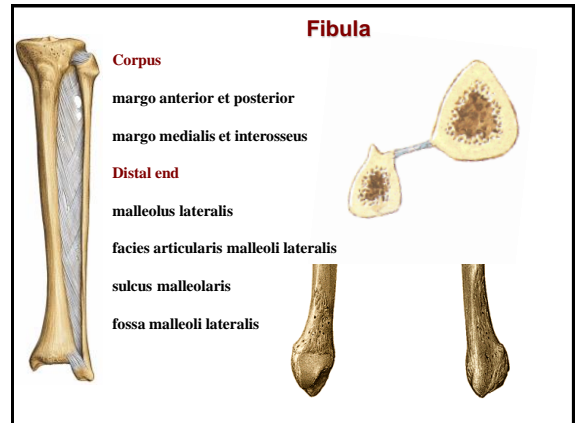
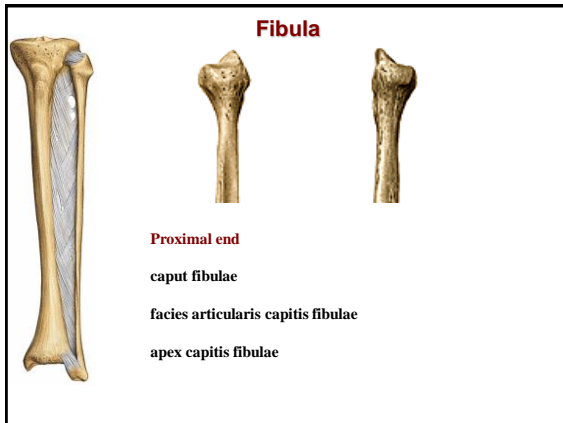
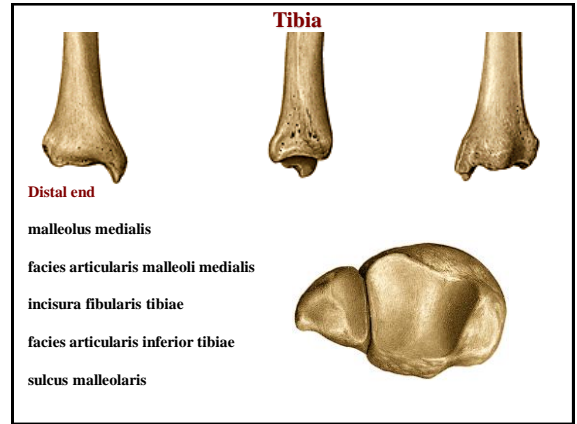
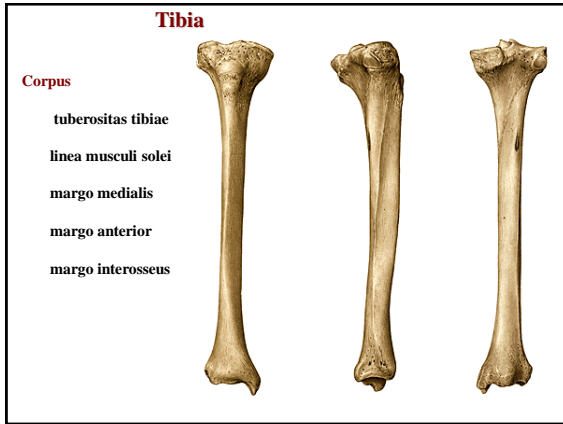



Tibia

Proximal end, body, distal end


- Proximal end
- condylus medialis et lateralis
- facies articularis superior medialis, lateralis
- eminentia intercondylaris
- tuberculum intercondylare mediale
- tuberculum intercondylare laterale
- area intercondylaris anterior et posterior
- facies articularis fibularis





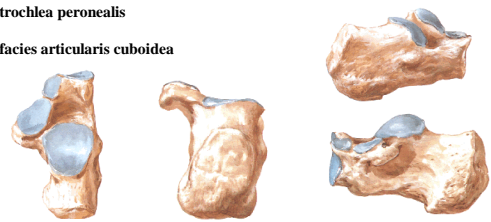
Talus

- Caput tali (facies articularis navicularis)
- Collum tali
- Corpus tali
- Trochlea tali - facies articularis superior
- Facies articularis malleolaris lateralis et medialis
- Facies articularis calcanea posterior, media, anterior
- Sulcus tali
- Processus lateralis tali
- Processus posterior tali (tuberculum laterale, mediale)
- Sulcus tendinis musculi flexoris hallucis longi



Calcaneus

- tuber calcanei (processus medialis et lateralis)
- facies articularis talaris posterior, media et anterior
- sulcus calcanei (sulcus calcanei + sulcus tali = sinus tarsi)
- sustentaculum tali (sulcus tendinis musculi flexoris hallucis longi)
- trochlea peronealis
- facies articularis cuboidea



Os naviculare

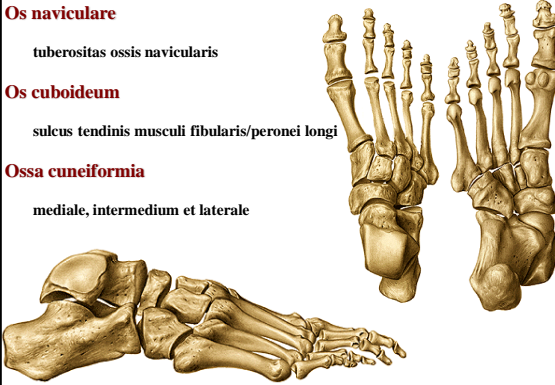
- tuberositas ossis navicularis

Os cuboideum

- sulcus tendinis musculi fibularis/peronei longi


Ossa cuneiformia

- mediale, intermedium et laterale




Ossa metatarsi I. - V.

- basis (tuberositas ossis metatarsi I. et V.)
- corpus
- caput

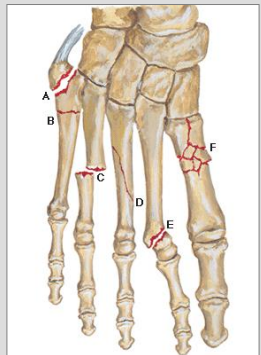


Ossa digitorum pedis, phalanges - kosti prstů nohy

- palec - phalanx proximalis et distalis
- II. - V. prst - phalanx proximalis, media et distalis
- basis phalangis
- corpus phalangis
- corpus/trochlea
- tuberositas phalangis distalis



Metatarsal fractures



X-Ray of the pelvis**X-ray of the children pelvis****X-ray of the knee****X-ray of the ankle****X-ray of the foot****References**

Putz, R. (2008):

Atlas of Human Anatomy Sobotta. Elsevier Books.

Keith L. Moore, Arthur F. Dalley (2005):

Clinically Oriented Anatomy. Williams and Wilkins.

Platzer, W., Kahle, W., Leonhardt H. (1992):

Locomotor system. Georg Thieme Verlag, Stuttgart, New York, 4th edition.

Čihák, R. (1987):

Anatomie 1. Avicenum, Zdravotnické nakladatelství.