

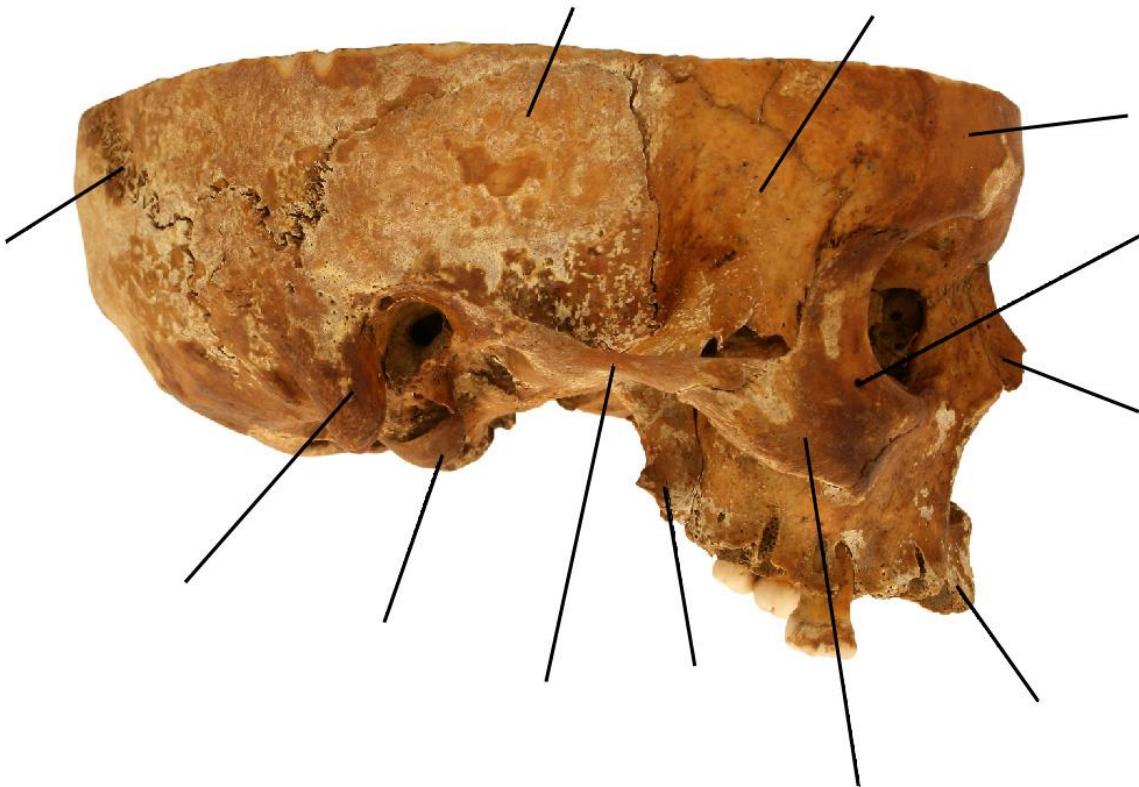
# SKULL AND TRUNK

Name

UČO

Group number

Name the marked structures:



Which structures belong together? Assign the correct letters into the table.

1	<i>Canalis pterygoideus</i>
2	<i>Meatus nasopharyngeus</i>
3	<i>Foramen jugulare</i>
4	<i>Lamina lateralis processus pterygoidei</i>
5	<i>Canalis opticus</i>
6	<i>Facies temporalis alae majoris ossis sphenoidalis</i>
7	<i>Os incisivum</i>
8	<i>Foramen lacerum</i>
9	<i>Fovea/spina trochlearis</i>
10	<i>Tuberculum pharyngeum</i>

A	<i>Orbita</i>
B	<i>Fossa cranii anterior</i>
C	<i>Fossa pterygopalatina</i>
D	<i>Cavitas oris</i>
E	<i>Fossa cranii posterior</i>
F	<i>Fossa cranii media</i>
G	<i>Cavum nasi osseum</i>
H	<i>Basis cranii externa</i>
I	<i>Fossa infratemporalis</i>
J	<i>Fossa temporalis</i>

1	2	3	4	5	6	7	8	9	10
---	---	---	---	---	---	---	---	---	----

# SKULL AND TRUNK

Name

UČO

Group number

Name the marked structures:



# SKULL AND TRUNK

Name

UČO

Group number

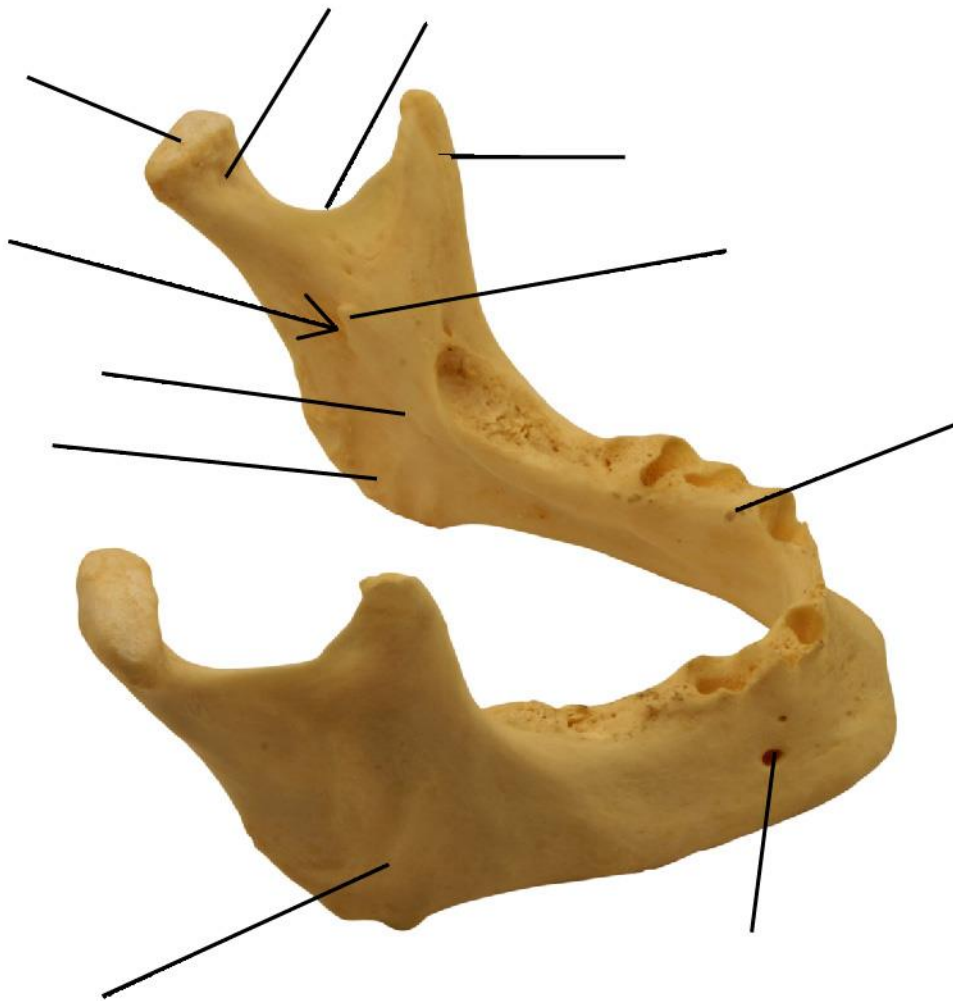
Which structures belong together? Assign the correct letters into the table.

1	<i>Canaliculi caroticotympanici</i>
2	<i>Canaliculus chordae tympani</i>
3	<i>Canalis nervi facialis</i>
4	<i>Apertura externa aqueductus vestibuli</i>
5	<i>Canaliculus mastoideus</i>
6	<i>Canalis musculotubarius</i>
7	<i>Canaliculus tympanicus</i>

A	<i>Fissura petrotympanica</i>
B	<i>Foramen stylomastoideum</i>
C	<i>Facies posterior pyramidy</i>
D	<i>Fossula petrosa</i>
E	<i>Semicanalis tubae auditivae</i>
F	<i>Canalis caroticus</i>
G	<i>Fissura tympanomastoidea</i>

1	2	3	4	5	6	7
---	---	---	---	---	---	---

Name the marked structures:



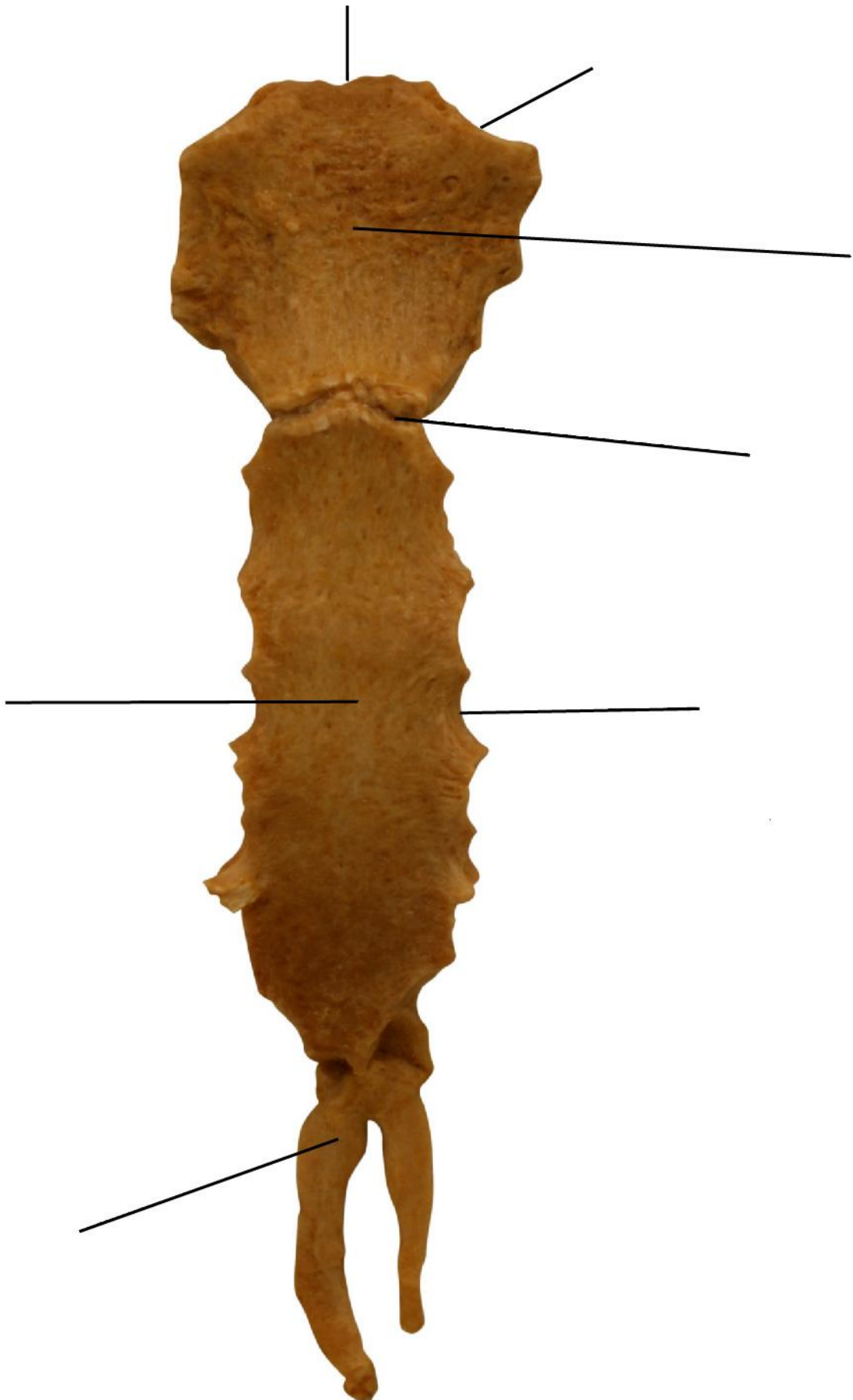
# SKULL AND TRUNK

Name

UČO

Group number

Name the marked structures:



# SKULL AND TRUNK

Name

UČO

Group number

Name the marked structures (superior view):



Choose the type of vertebra:

