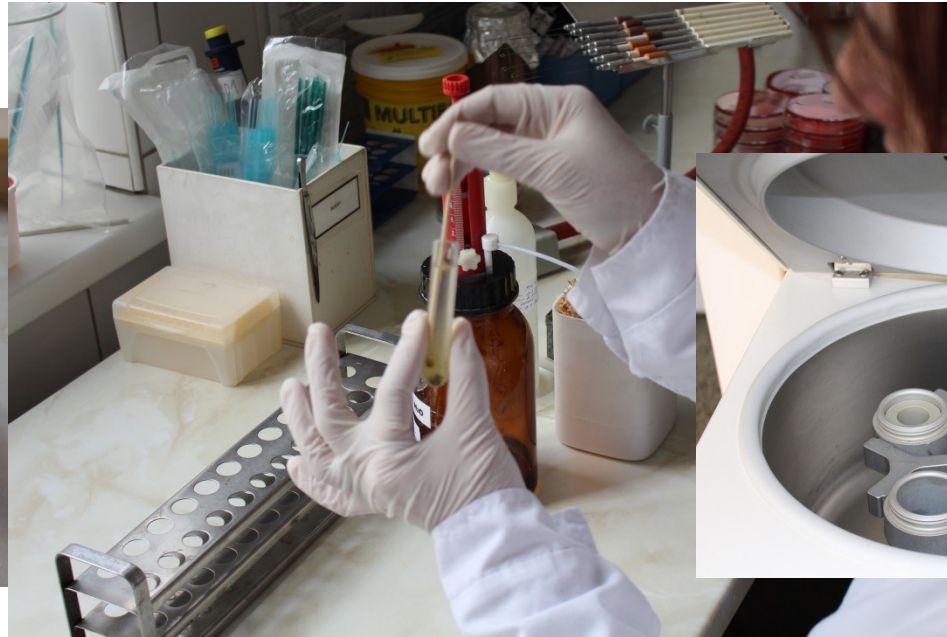


Stool – parasitology

Faust method



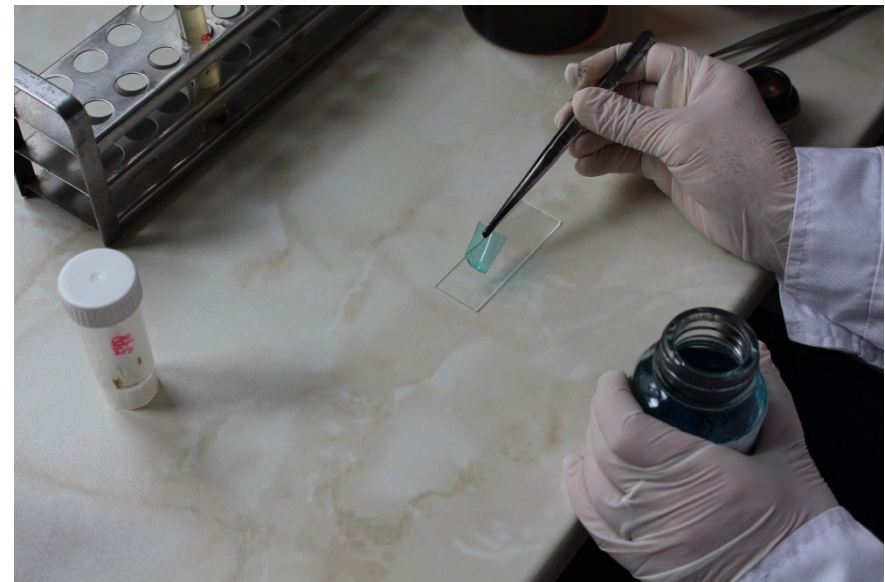
mixing with water



centrifugation



transferring sediment to slide



covering by cellophane (glycerin+malach. green)

Kato

mixing with $ZnSO_4$

centrifugation

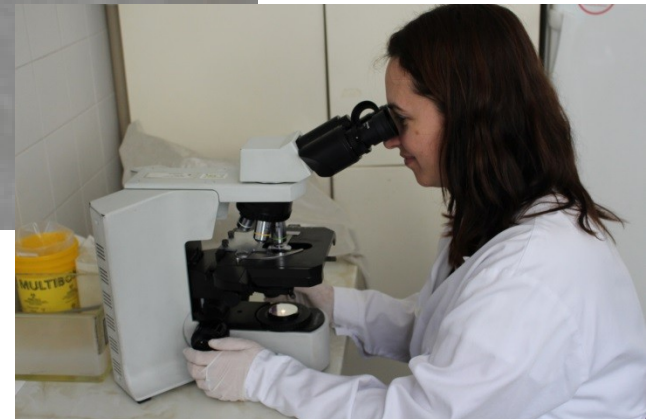
adding $ZnSO_4$



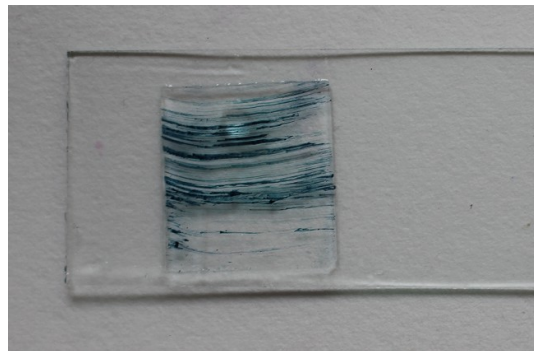
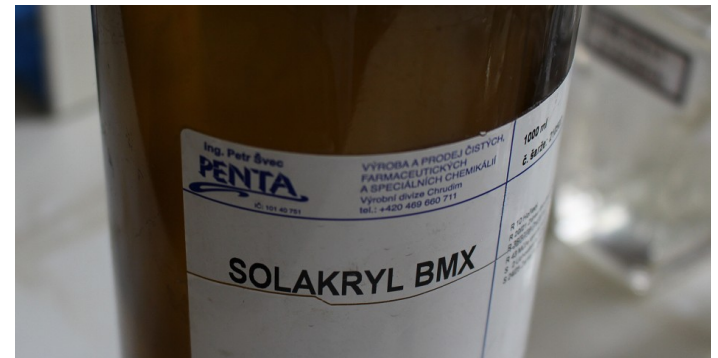
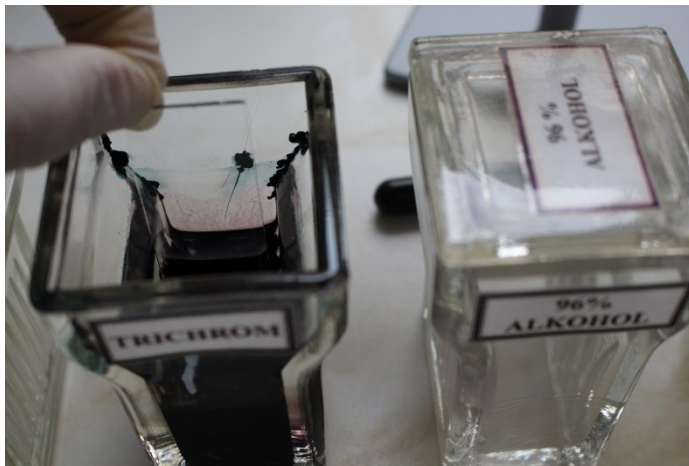
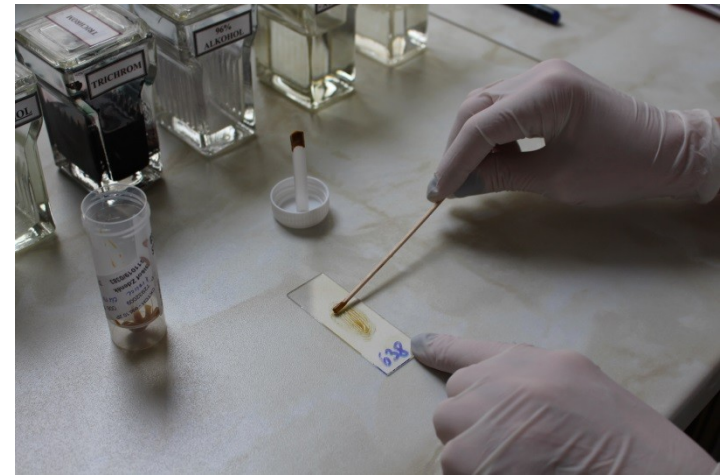
transferring coverslip



microscopy



Trichrom staining



Using mounting media (e.g. Solakryl)

microscopy

