

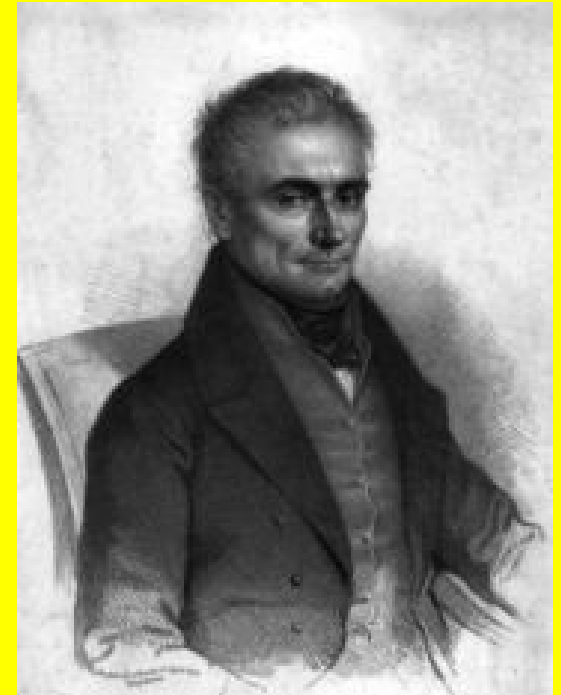
TOPOGRAFICKÁ ANATOMIE KONČETIN, ZAD

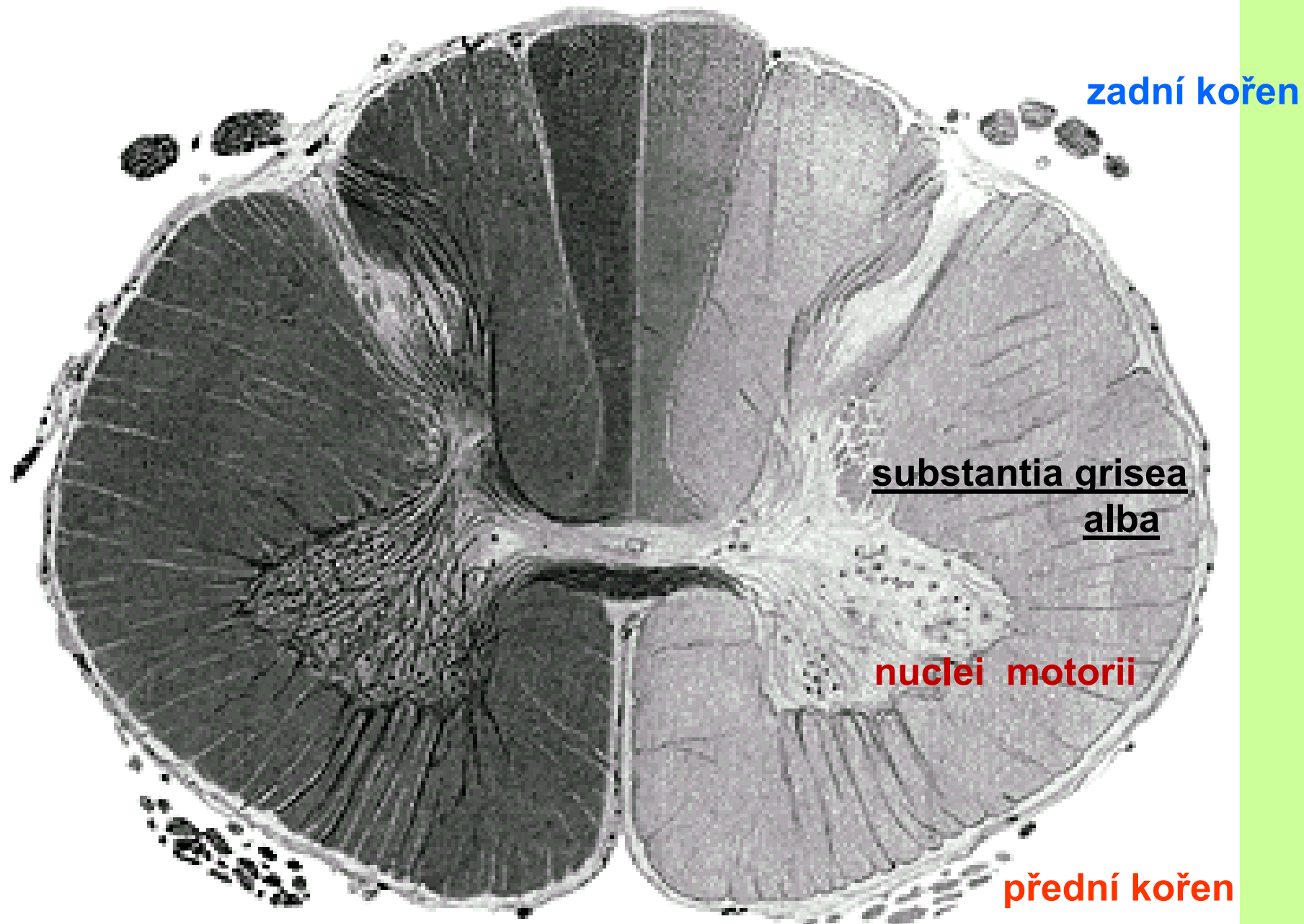
STAVBA MÍŠNÍHO NERVU

Doc. MUDr. Pavel Matonoha, CSc.

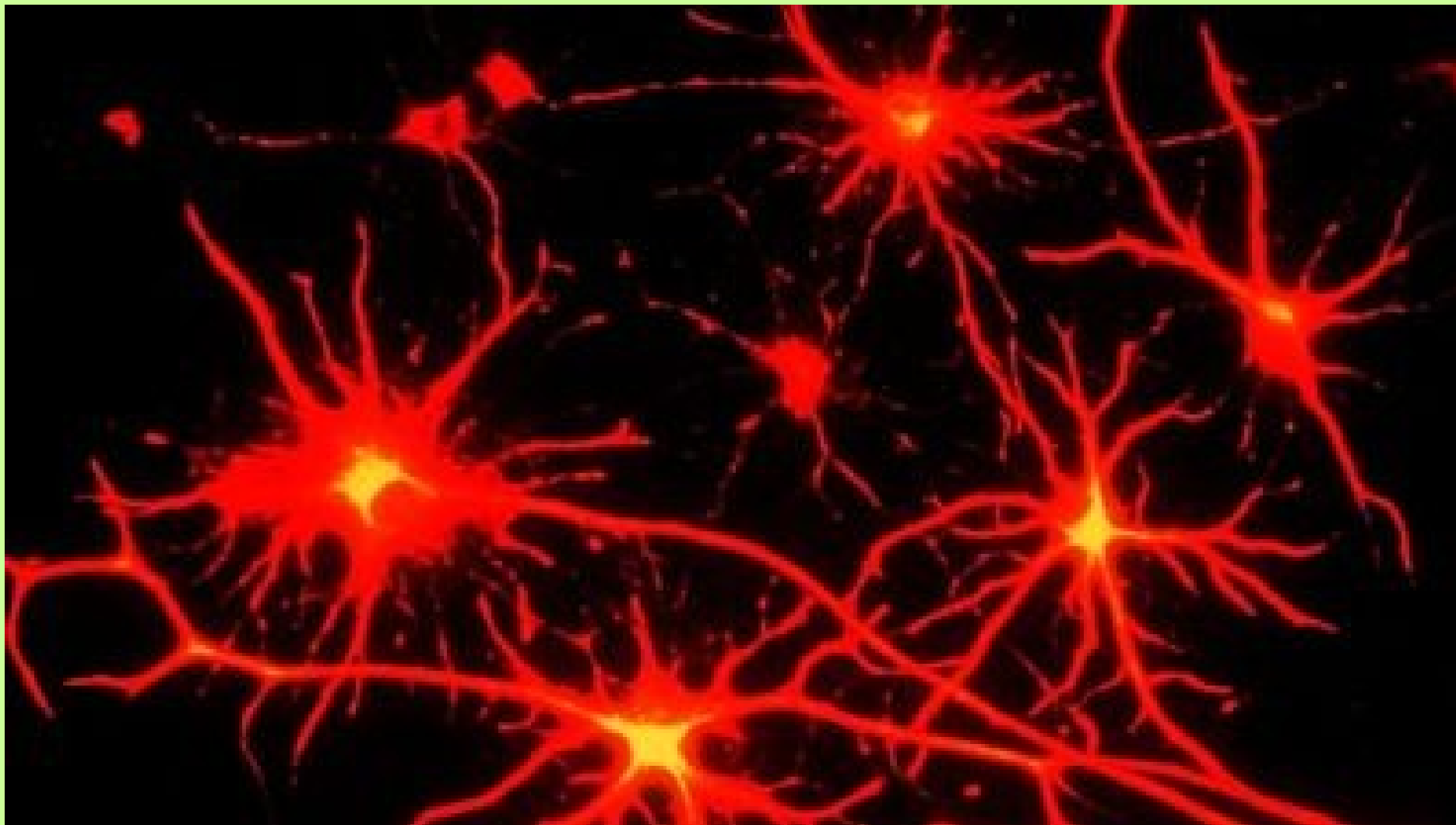
Anatomický ústav LF

J.E.Purkyně

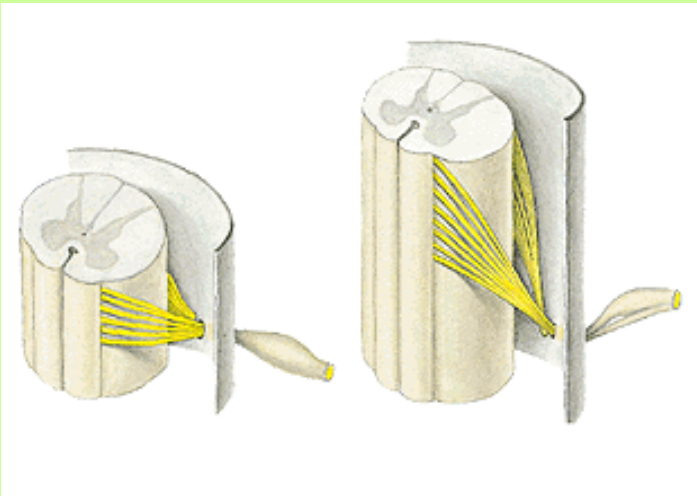
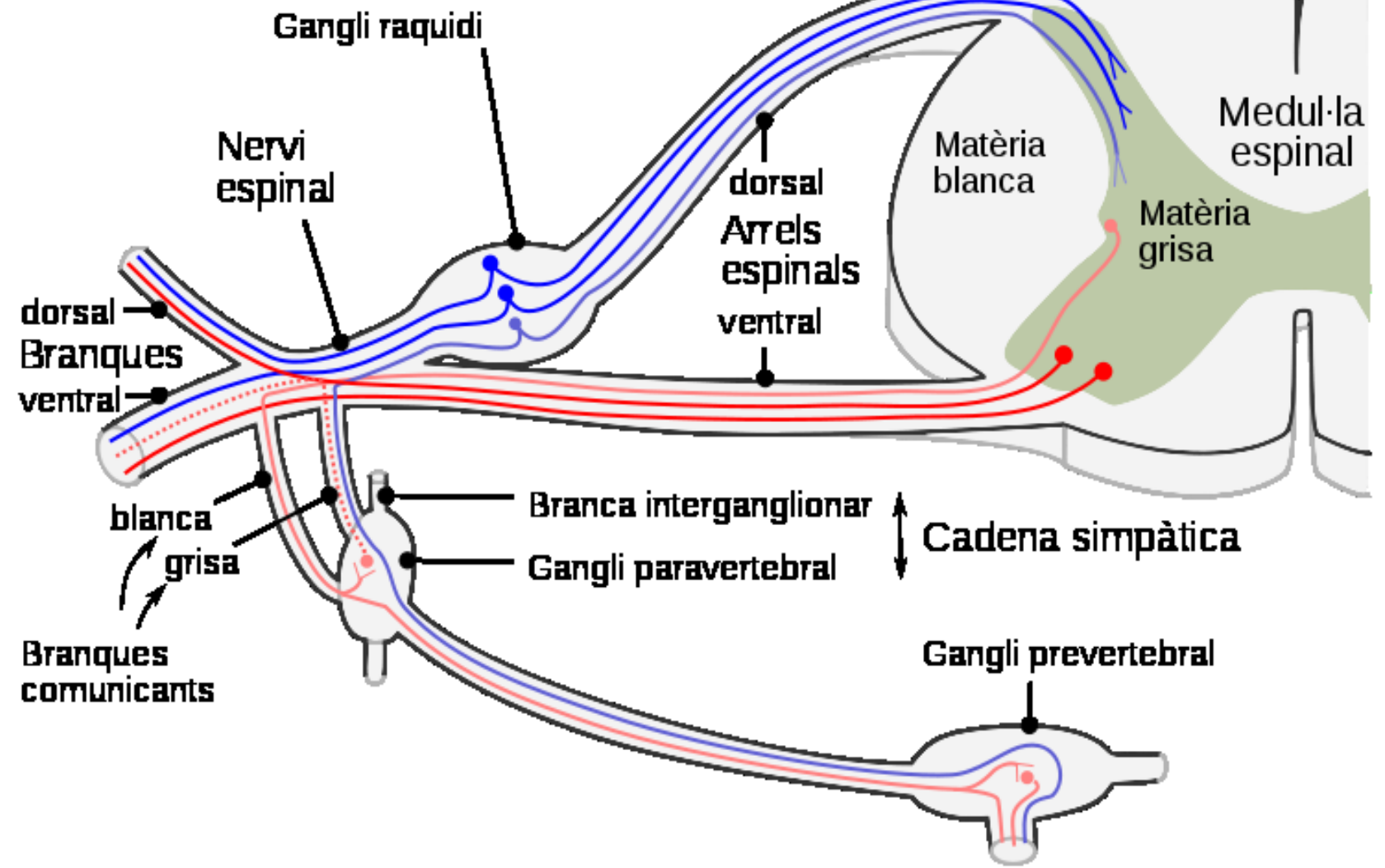




PŘÍČNÝ ŘEZ MÍCHOU – barveno Ag



Neuron : soma = perikaryon, **dendrity** (**afferentní, sensorické, centripetální**),
neurit – **axon** (**efferentní, motorický, centrifugální**)



Stavba míšního nervu - SEGMENT

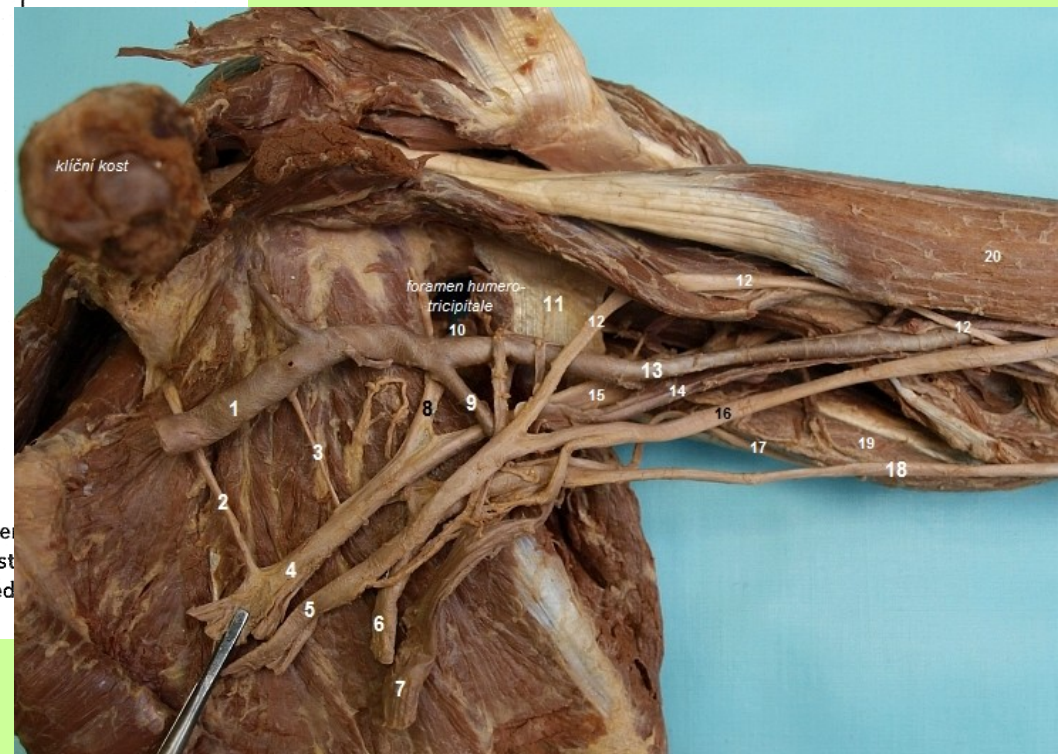
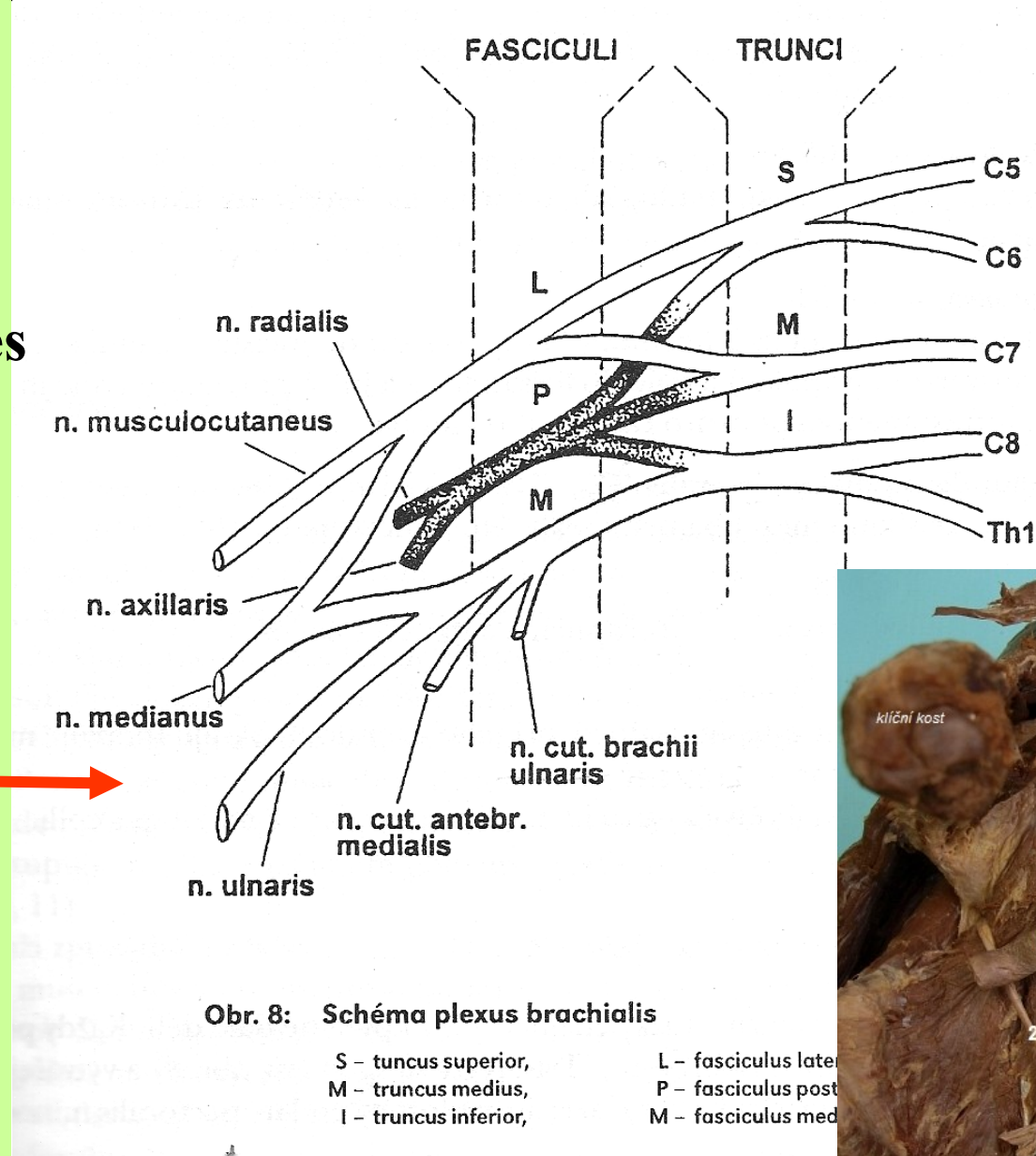
Nervové plexy tvoří
přední větve – rami
ventrales

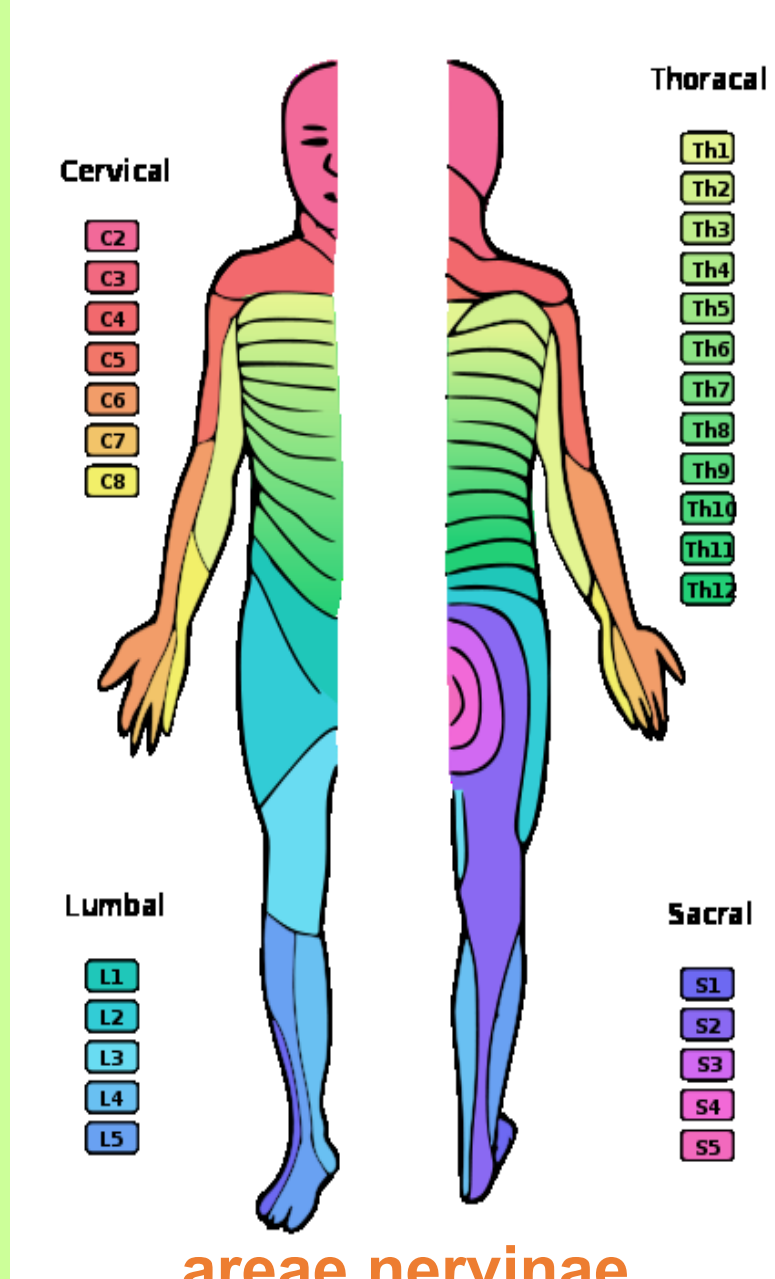
1. nervů C1-C4
Plexus cervicalis

2. nervů C5(C4)-Th1
Plexus brachialis →

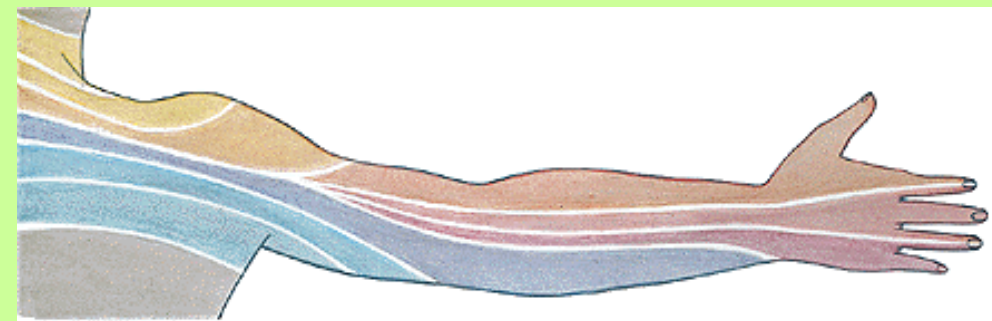
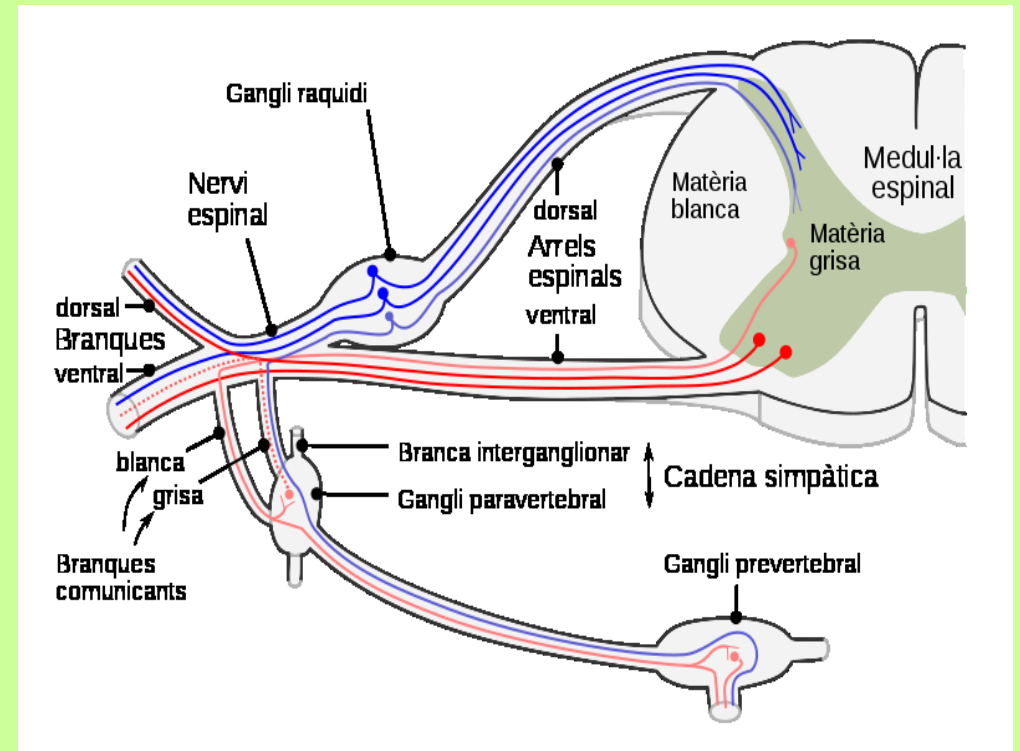
3. nervů Th12-L4
Plexus lumbalis

4. nervů L4-S5(Co)
Plexus sacralis



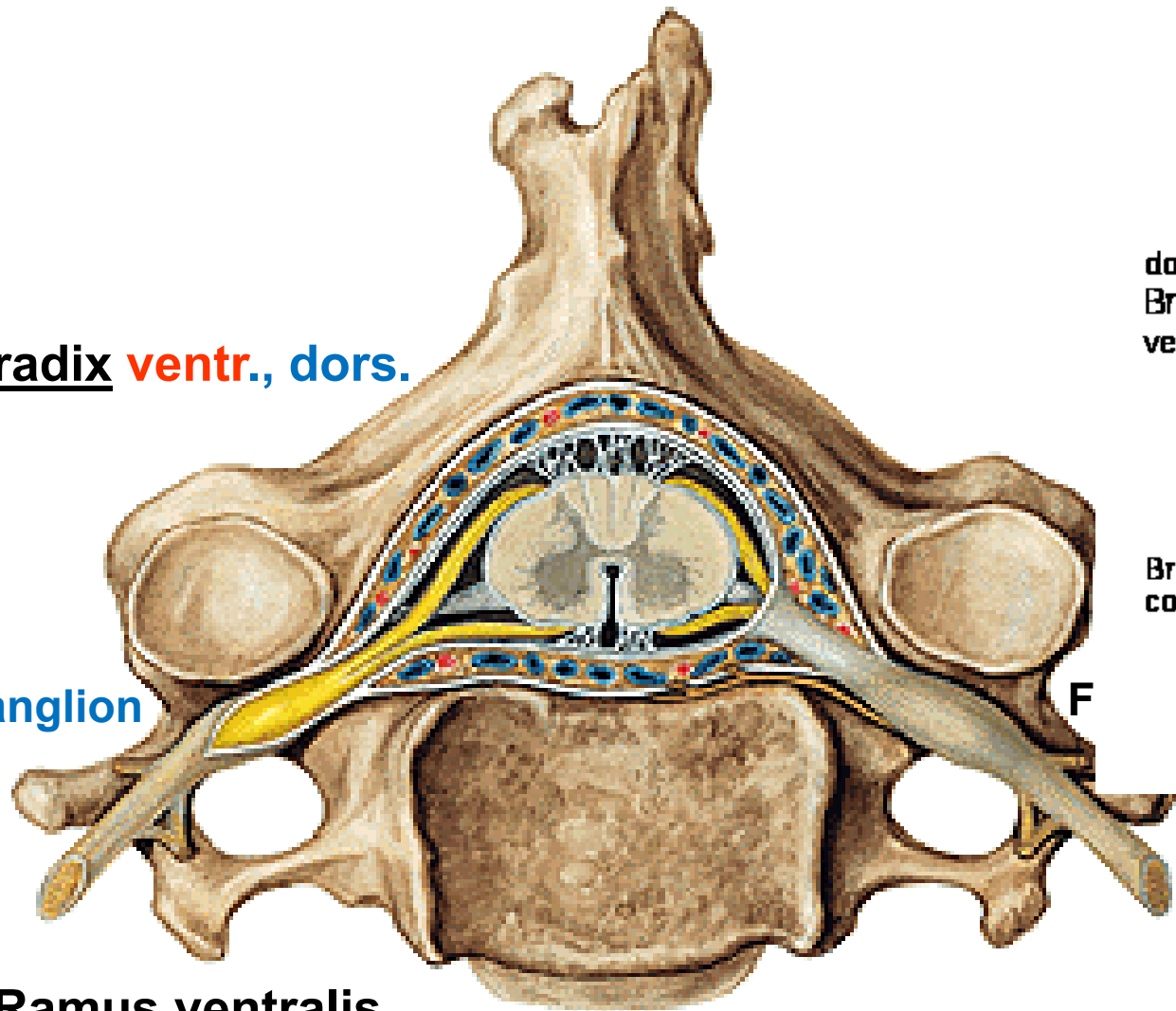


areae nervinae



areae radicales (dermatomy),
segmentální inervace

radix **ventr.**, **dors.**

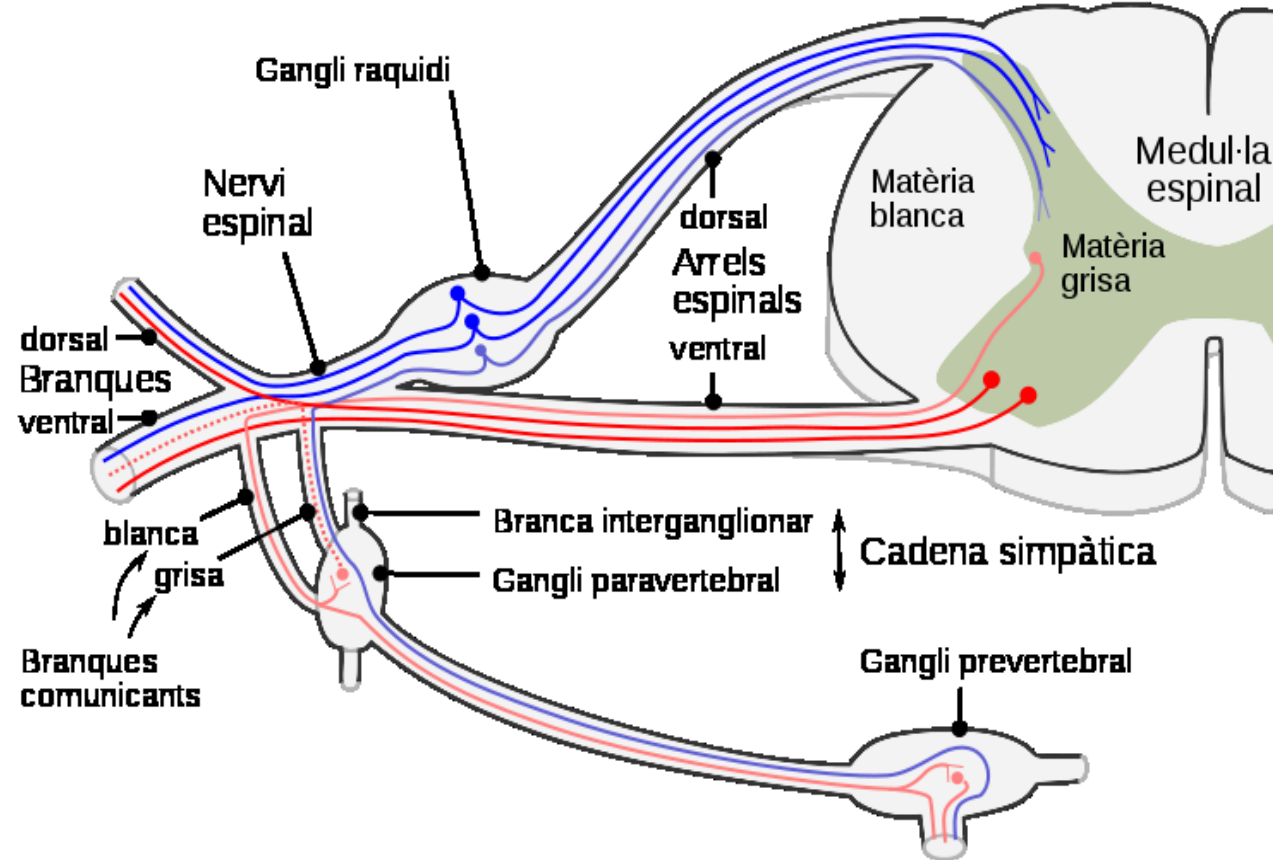


ganglion

Ramus ventralis
dorsalis
communicans

canalis vertebralis

TOPO útvarü



Gangli raquidi

Nervi
espinal

dorsal
Branques
ventral

blanca
grisa

Branques
comunicants

dorsal
Arrels
espinal
ventral

Branca interganglionar

Gangli paravertebral

Cadena simpàtica

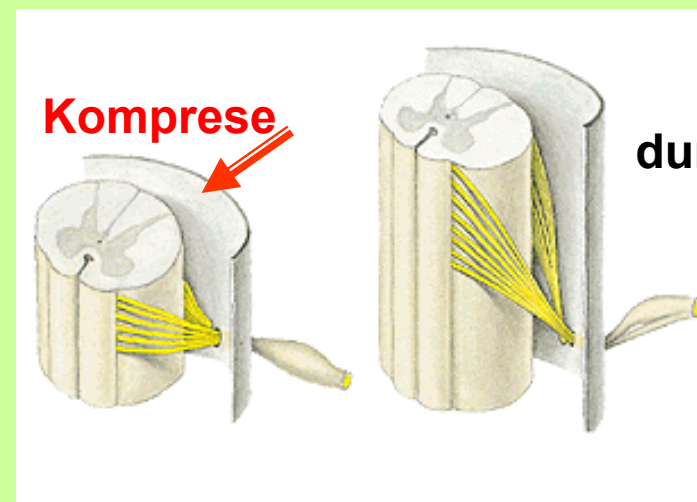
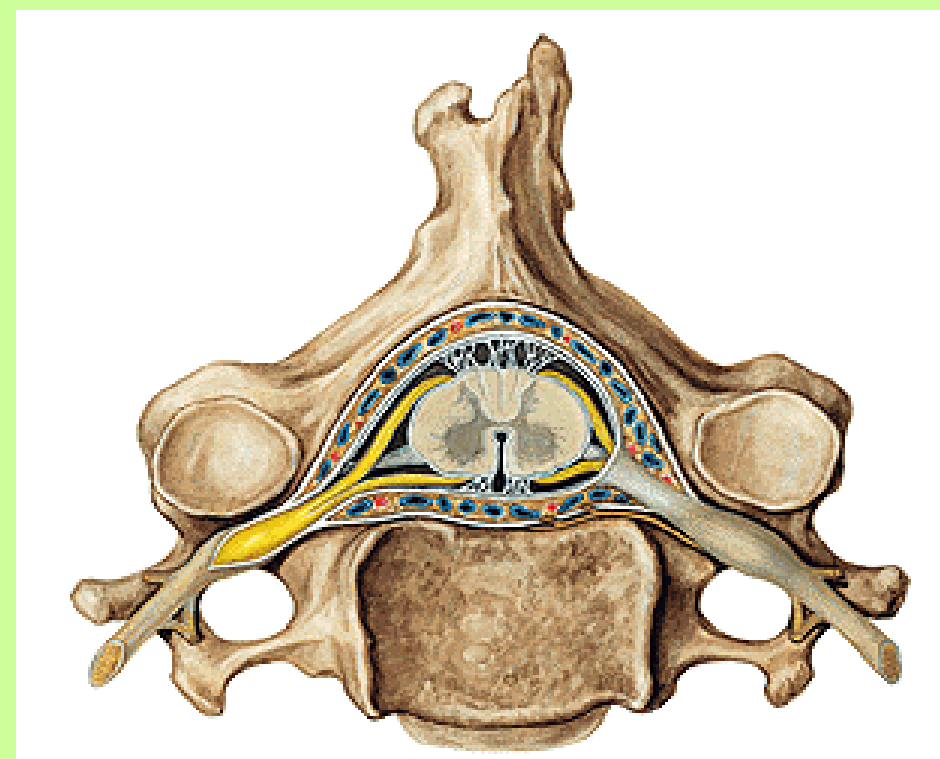
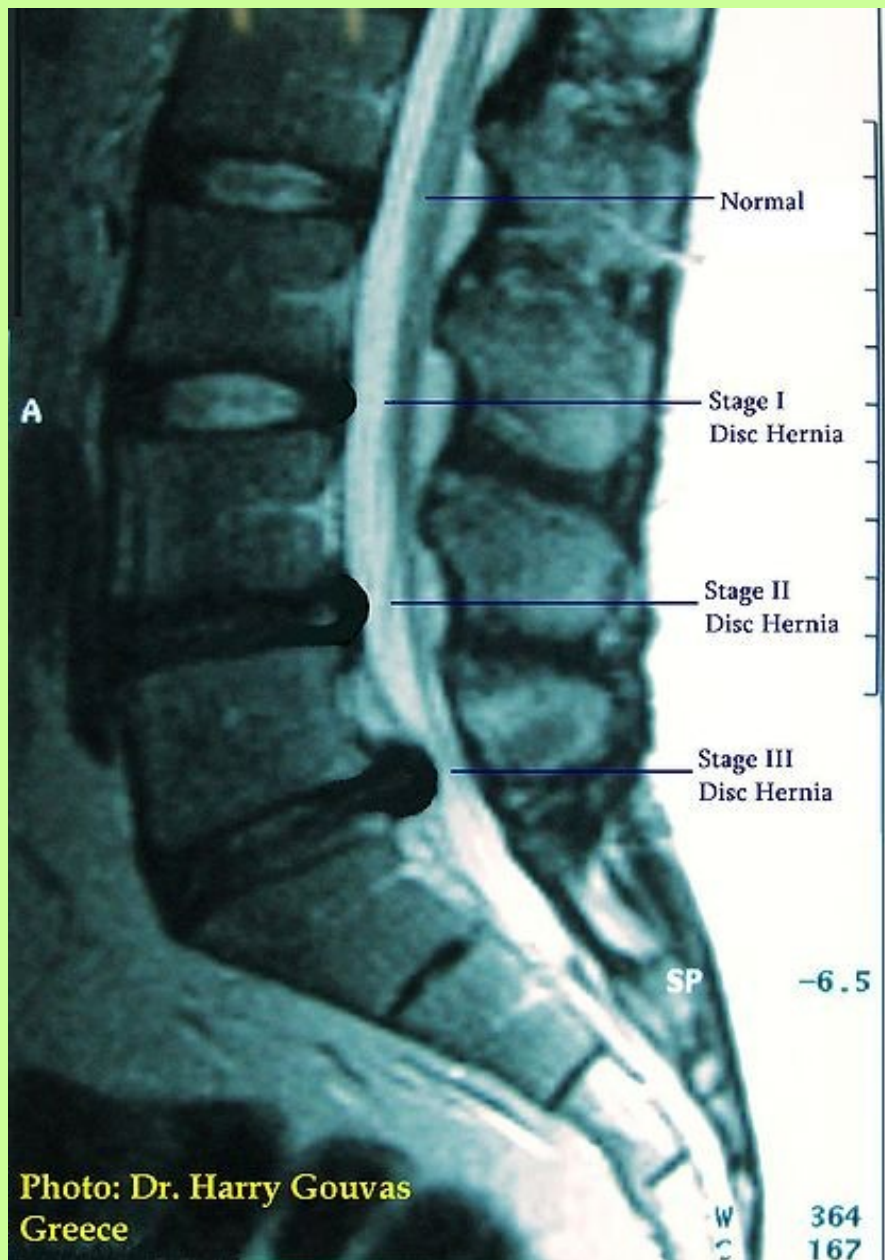
Gangli prevertebral

Matèria
blanca

Matèria
grisa

Medul·la
espinal

HERNIE DISKU



kontrastní rtg – (perimyelografie) – boční projekce – hernie disku

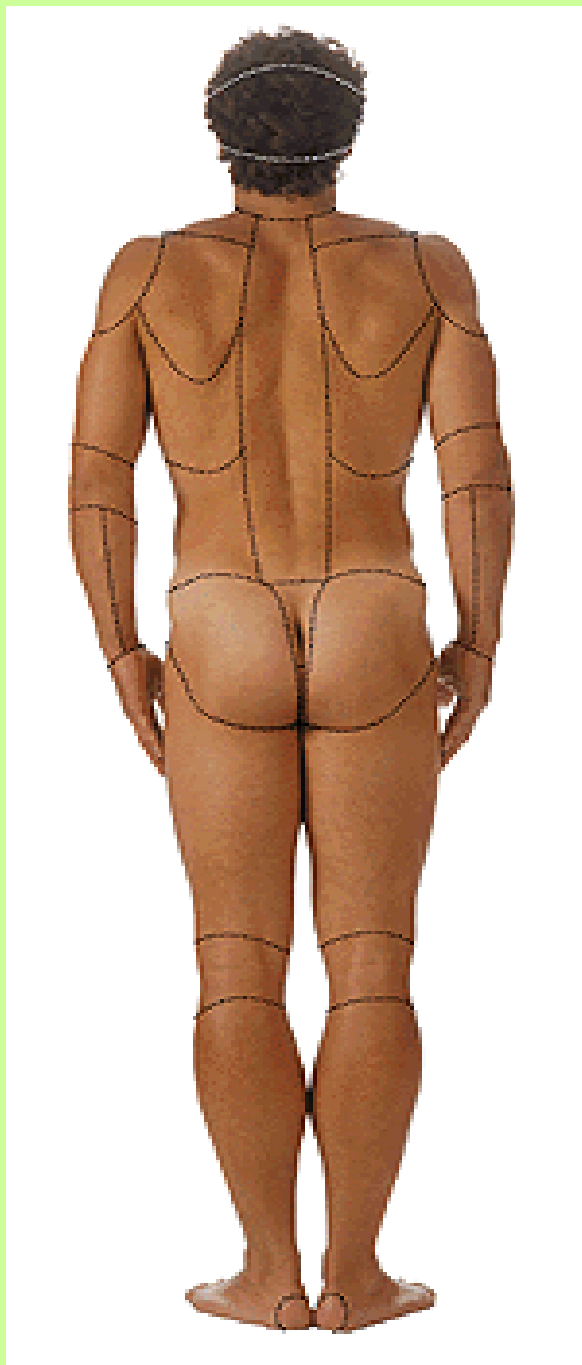
Topografie hřbetu

krajiny

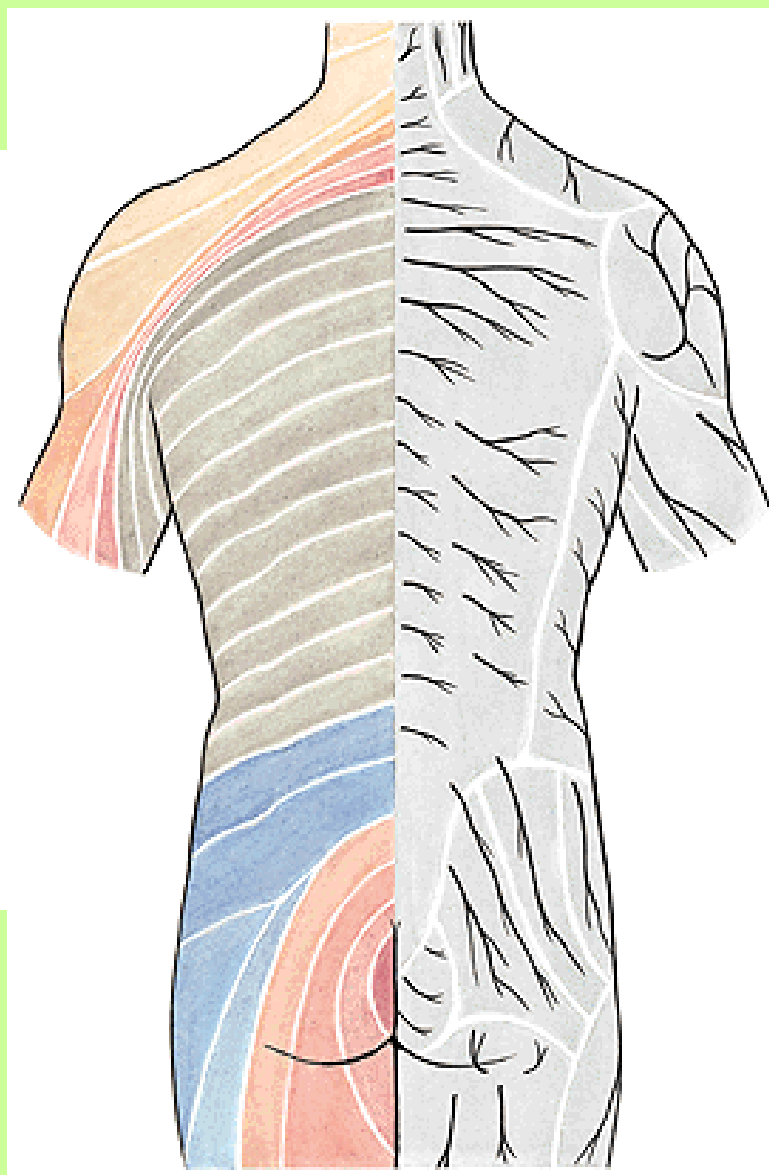
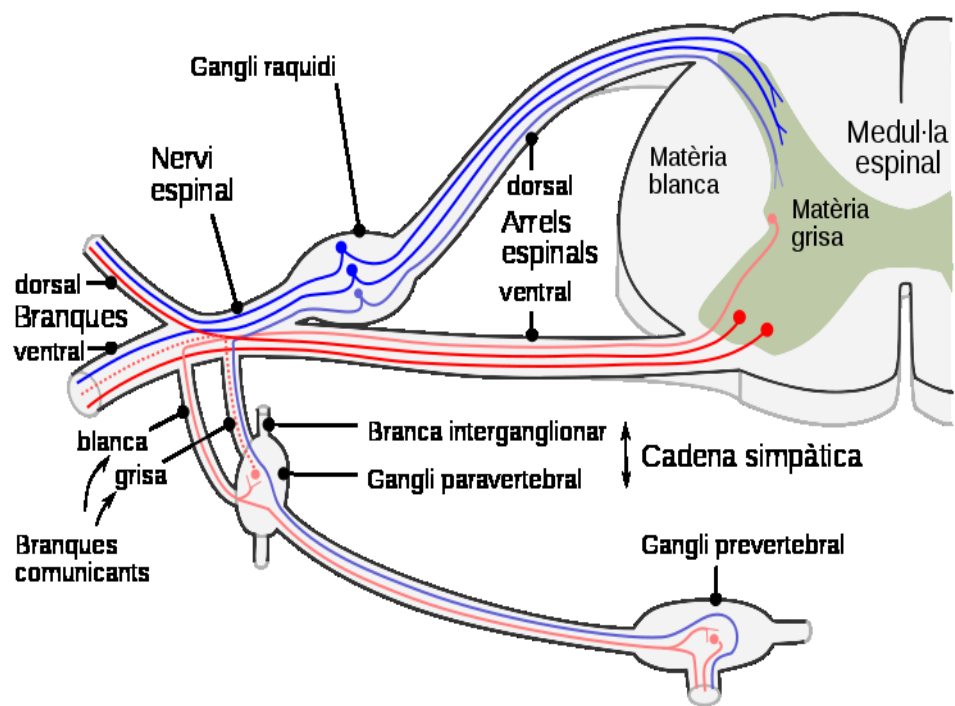
kožní inervace

svaly

klinika



Regiones dorsi – krajiny hřbetní



rr. dorsales :

med. + lat.

nn. clunii (clunium)

- a) sup. (L)
- b) medii (S)
- c) inferiores
(n. cutaneus femoris post.)

Podkožní vrstva – rr. dorsales

SVALY:

trapéz, latiss.(+ aponeur.)
scapul.,rhomb.,serrat.
splenius, semispinal.

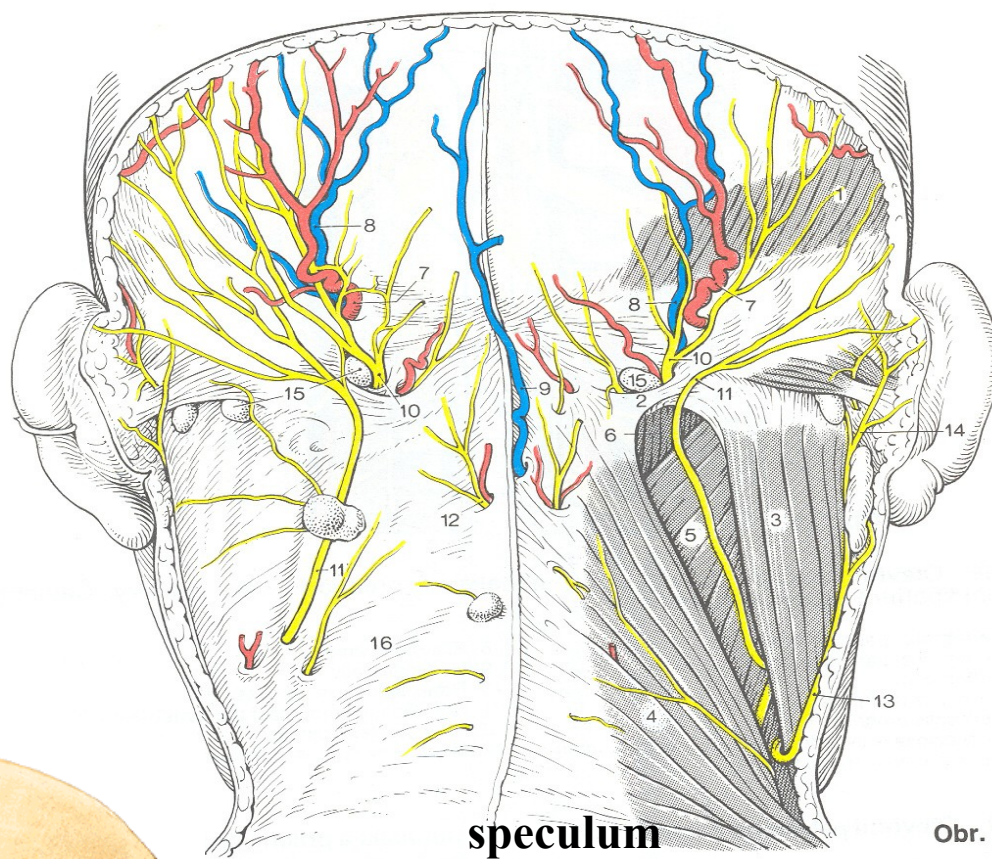
Rami dorsales



n. occipit. major – C2
tertius – C3



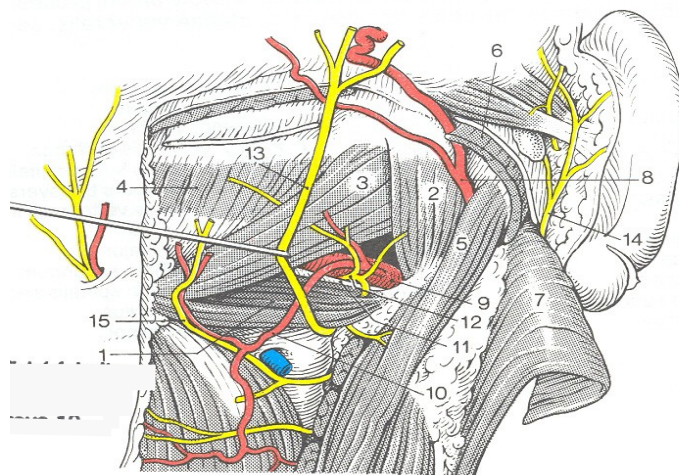
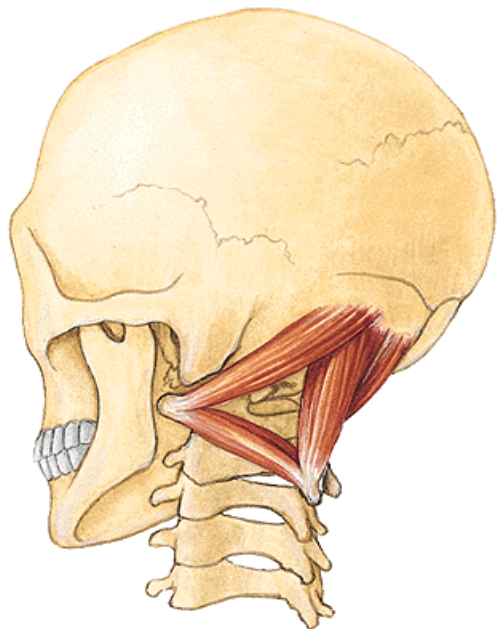
nn.
clunii (clunium)



n. occipitalis major – C2 + arterie

n. occipitalis tertius – C3

Svaly:trapez.,splenius, semispinalis sternocleidomast.



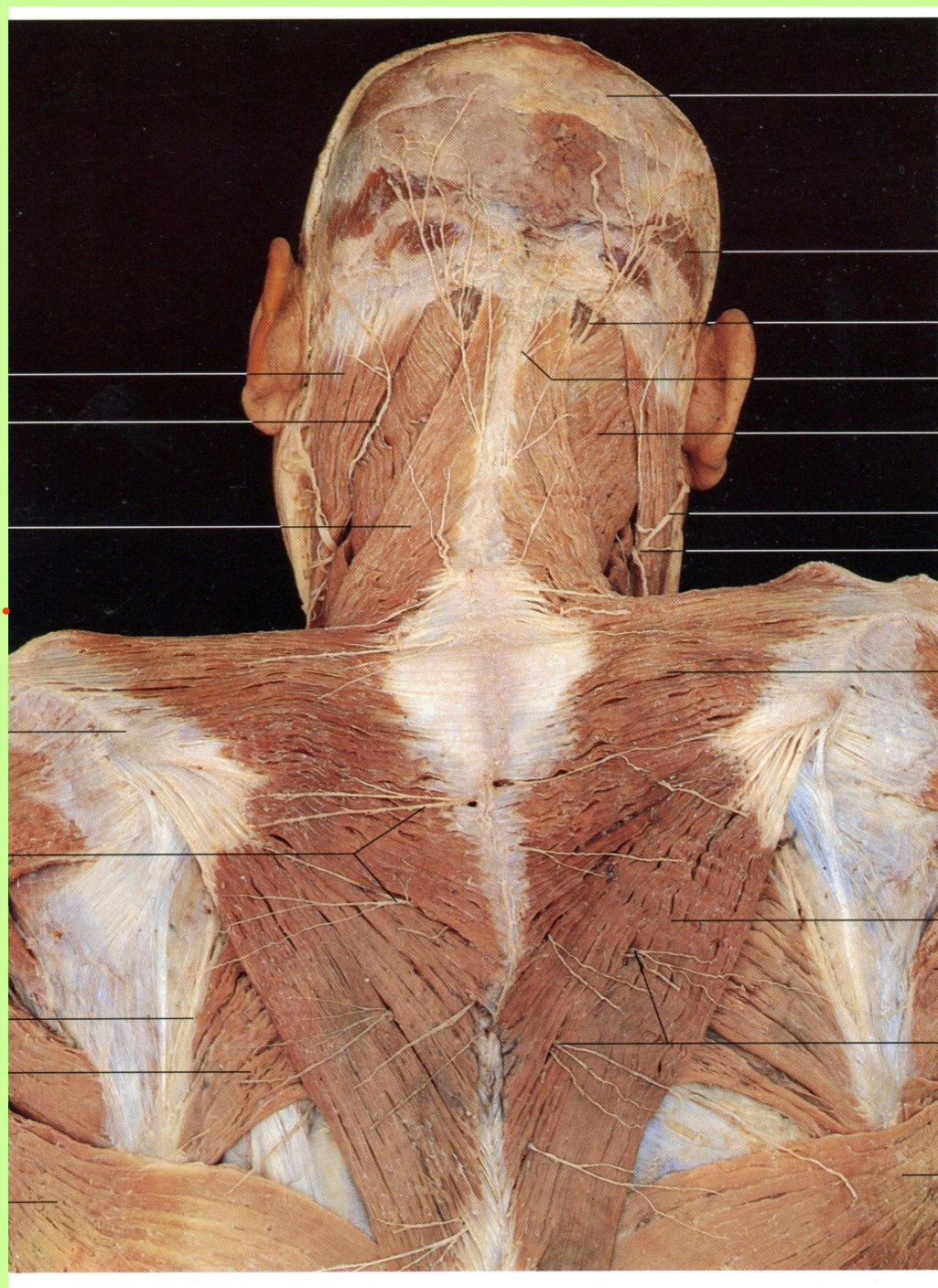
Trigonum suboccipitale:

**m. rectus major, obliquus
obsahuje: n. C1 – suboccipitalis
a. vertebralis**

Regio nuchae (nuchalis)

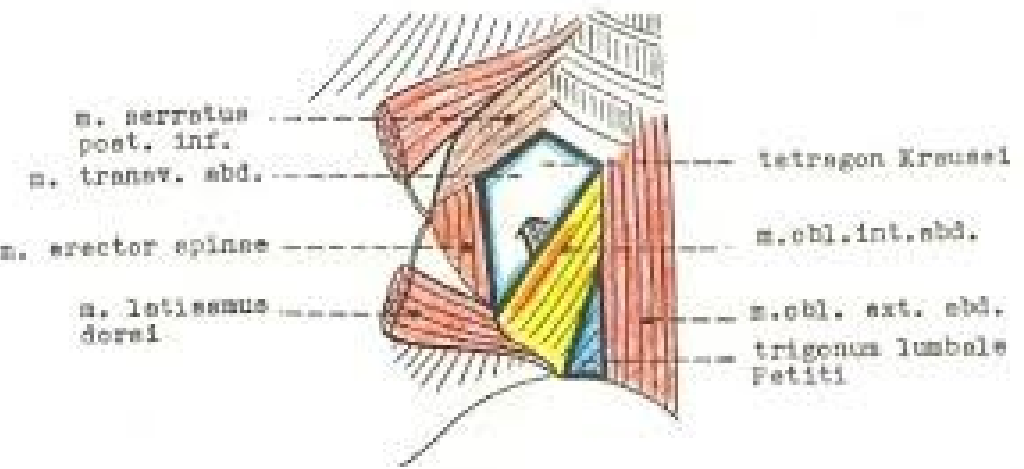
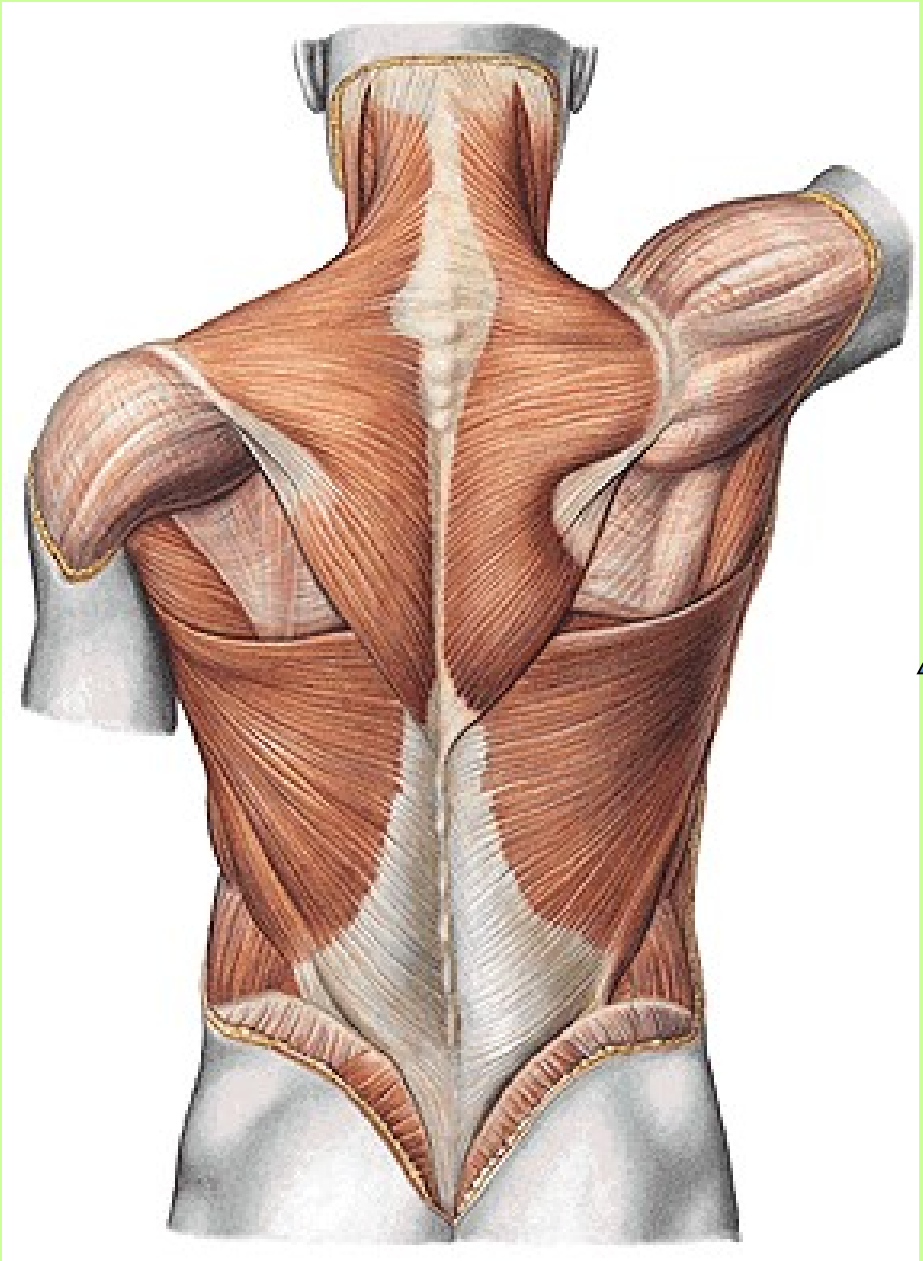
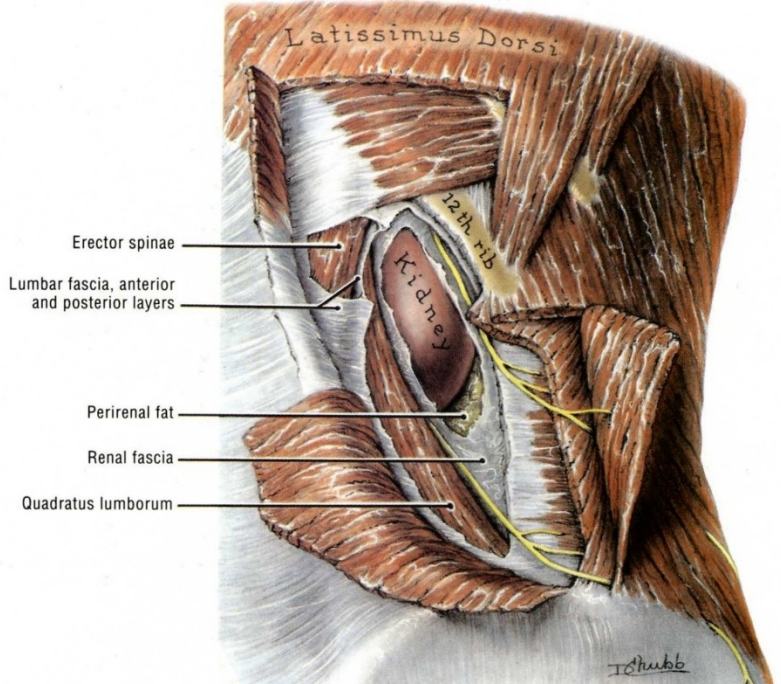
n.occip.min.
cephalgie

SVALY...



**N. OCCIPIT. MAJOR,
TERTIUS**

Rami dorsales: med., later.



Obr. 5). Trigonum lumbale Petiti a tetragon Krausei. (Podle Weignera). trig. Grünfelti



Lumbale Petiti:

latissimus, crista,
zevní šikmý,
vnitřní šikmý = spodina



SCARIFICATIO
DORSI



Scarificatio dorsi