

AUTONOMNÍ NERVOVÝ SYSTÉM (ANS)

složka centrální

složka periferní

sympatikus (pars sympathica)

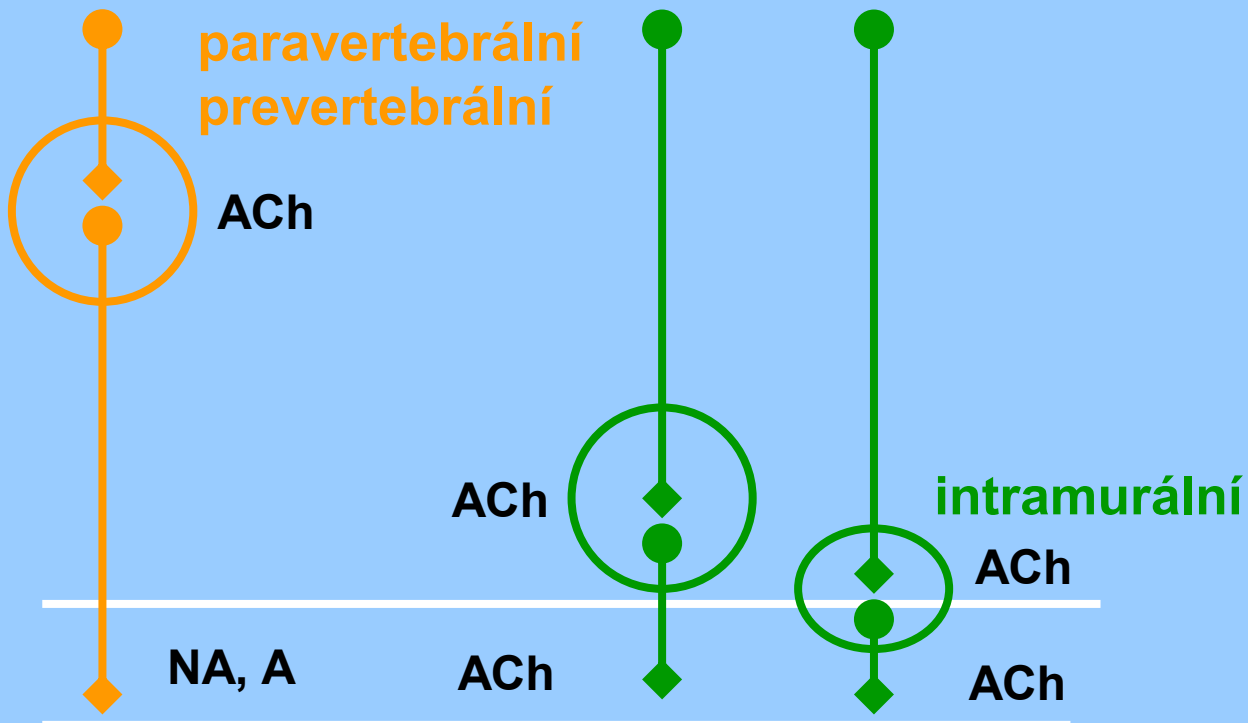
parasympatikus (pars parasympathica)

enterický systém

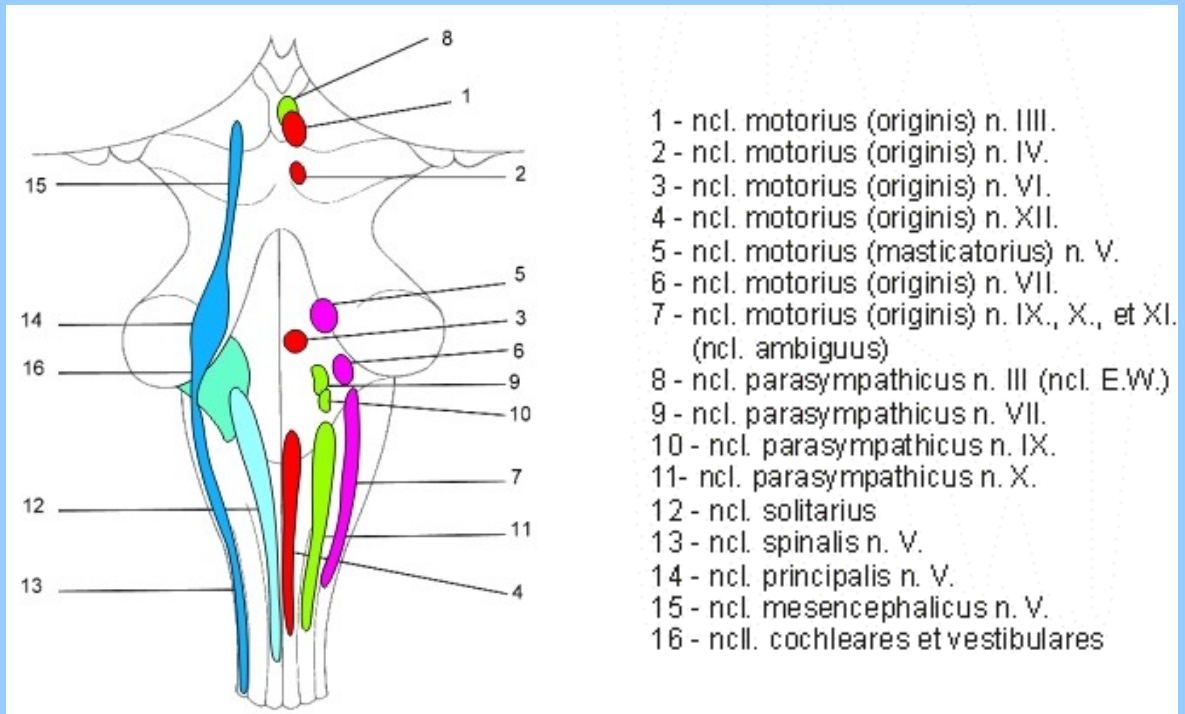
system kranio-sakrální (parasympathicus)

system thorako-lumbální (sympathicus)

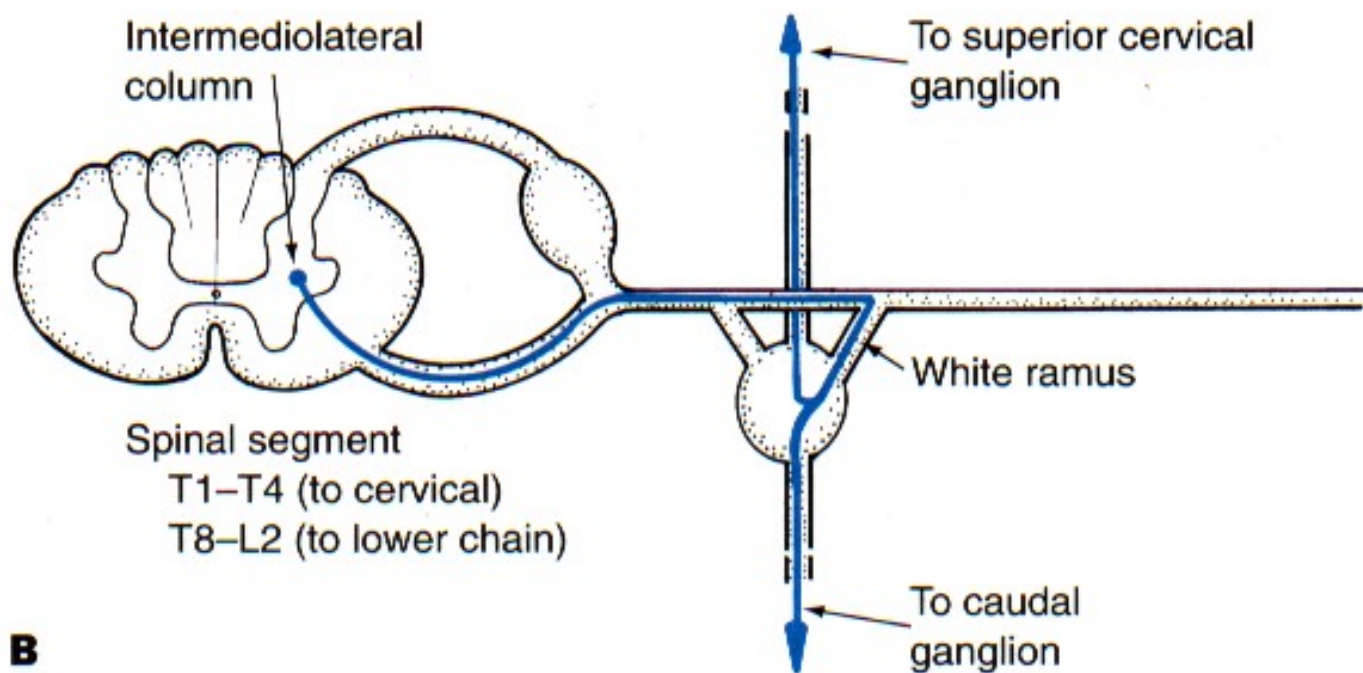
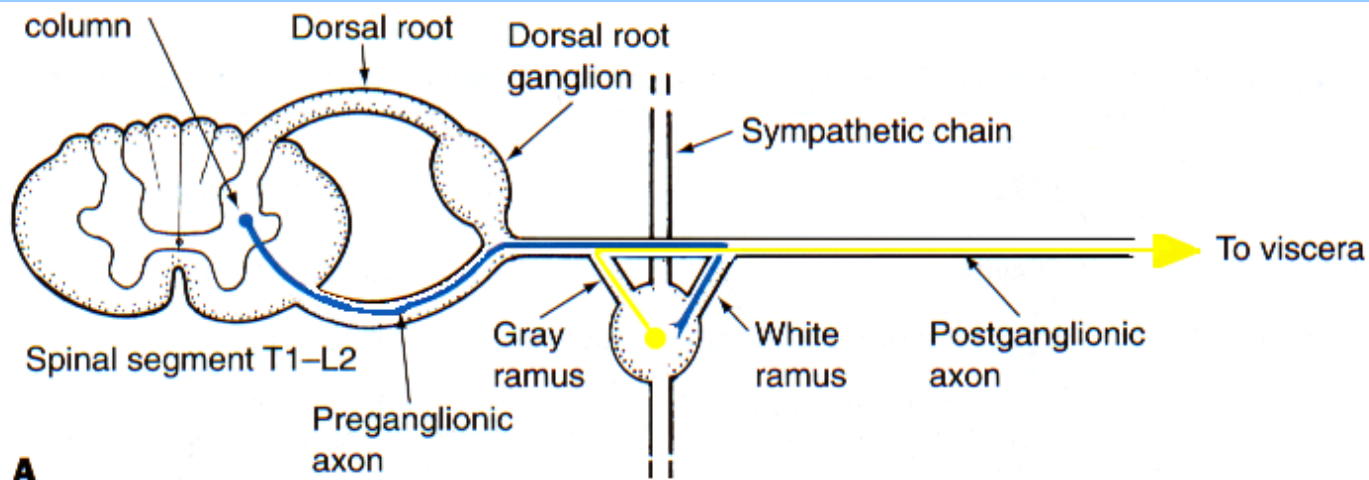
system kranio-sakrální (parasympathicus)



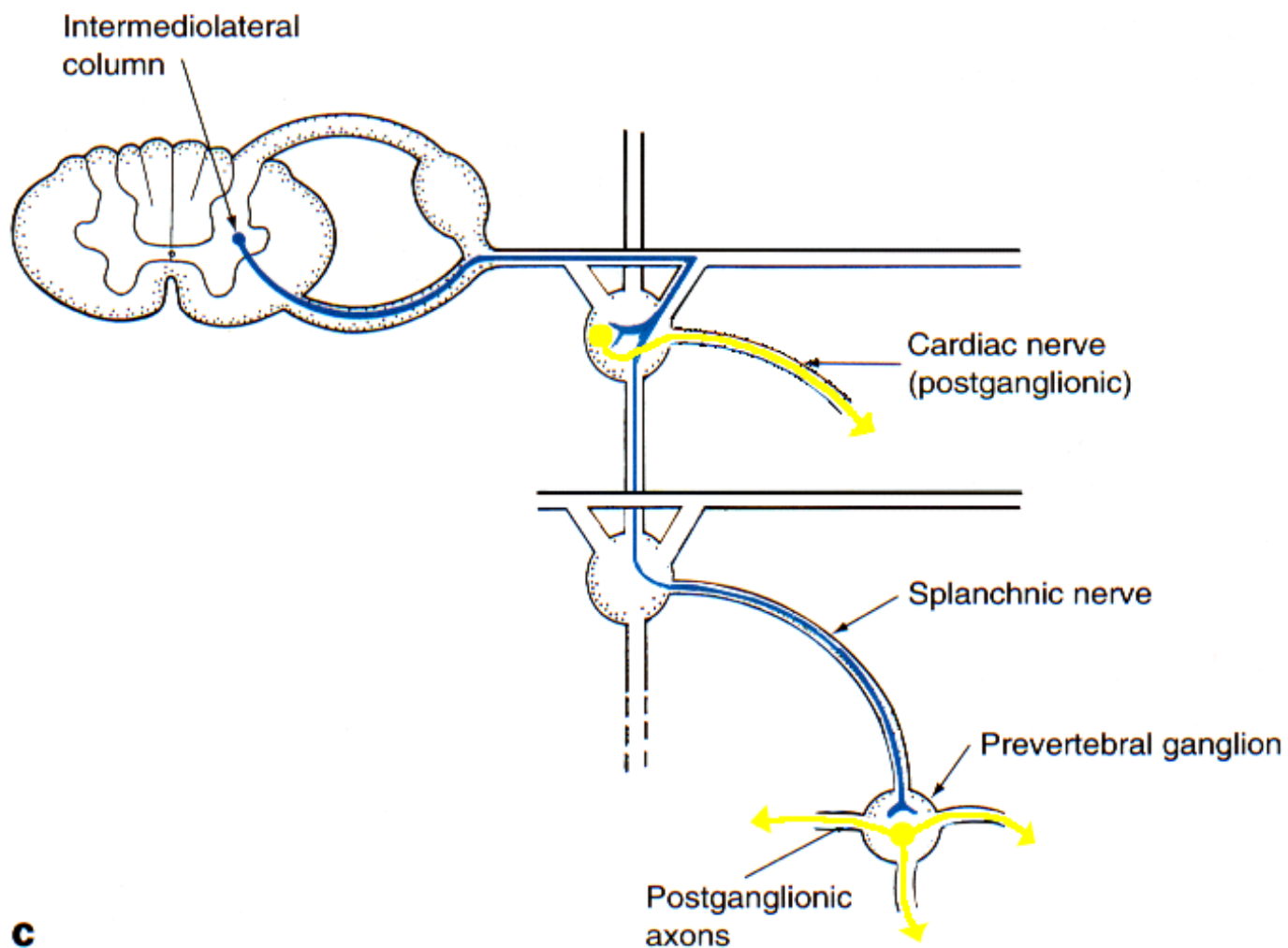
Preganglionic parasympathetic neurons



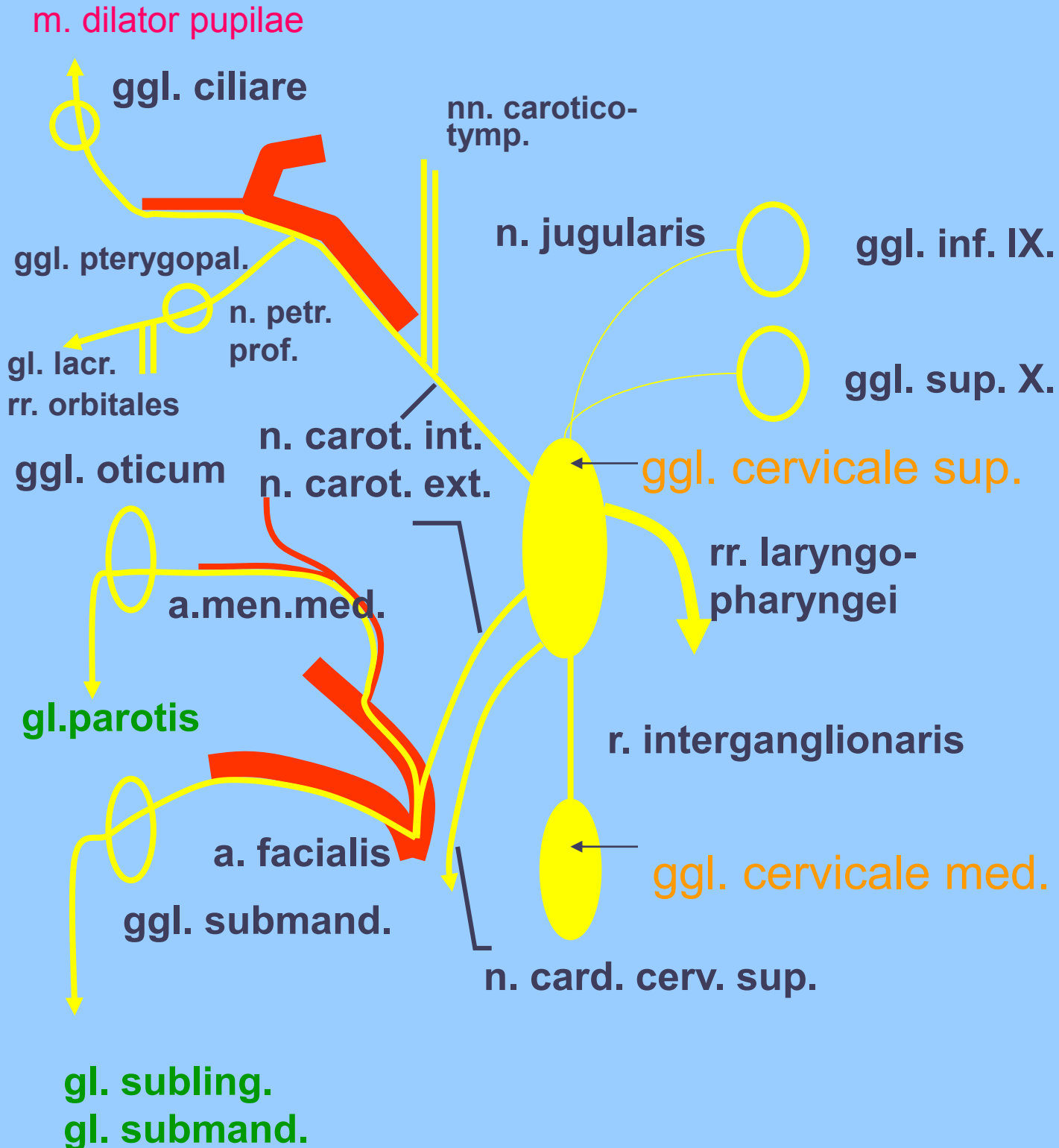
Způsob přepojení sympatických pregangliových axonů I-II



Způsob přepojení sympatických pregangliových axonů III



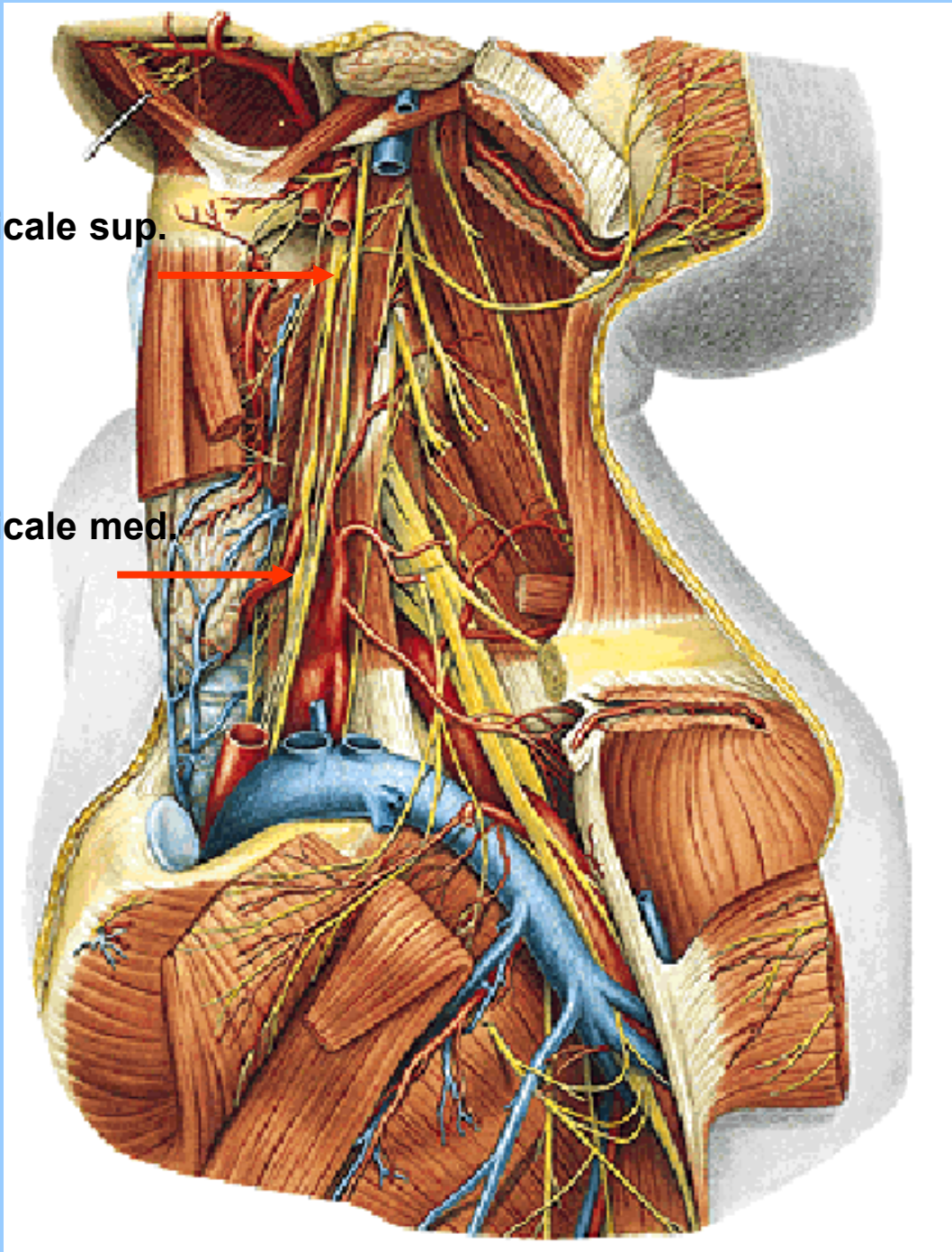
Ggl. cervicale sup.



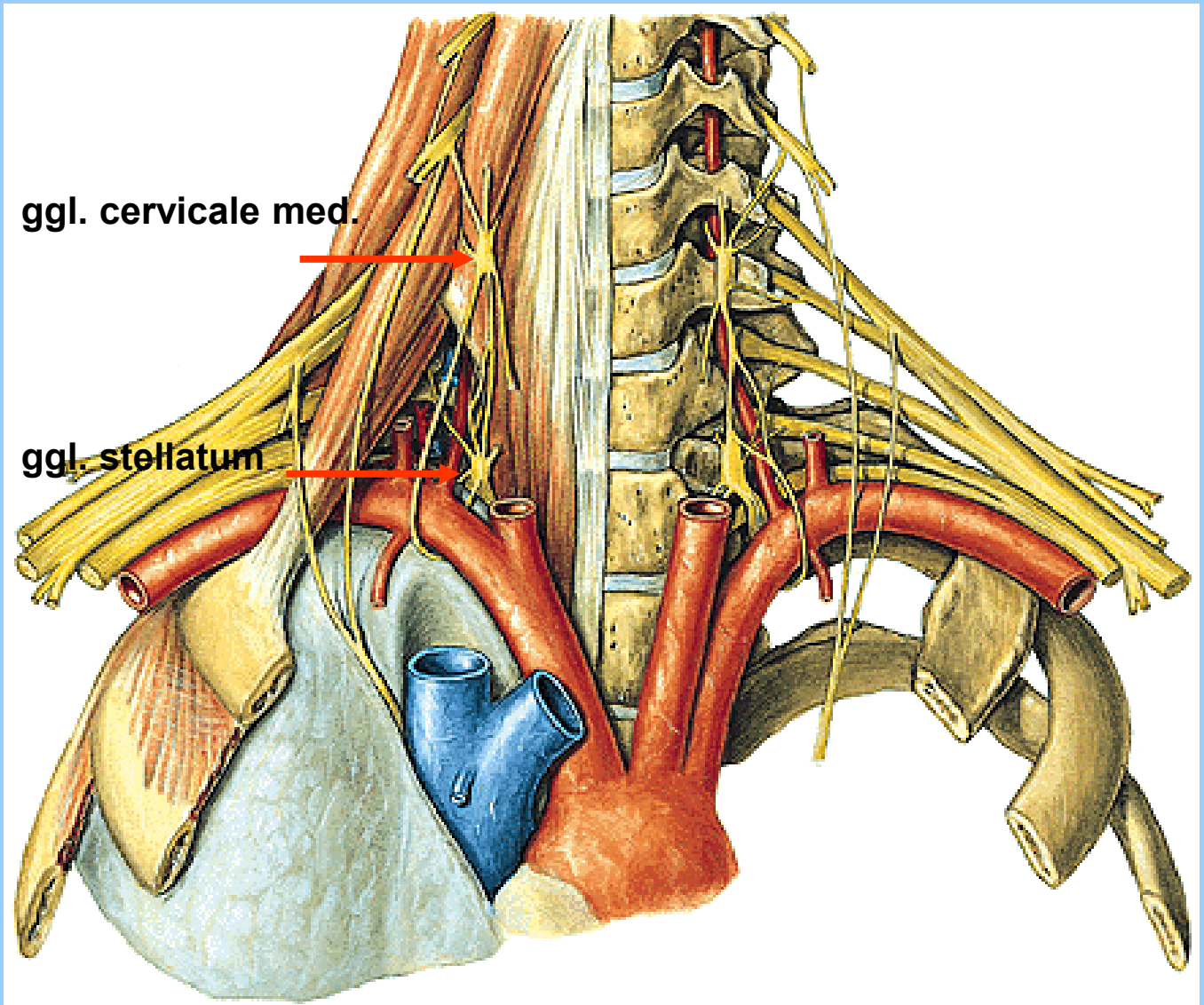
Ganglion cervicale sup. et med.

ggl. cervicale sup.

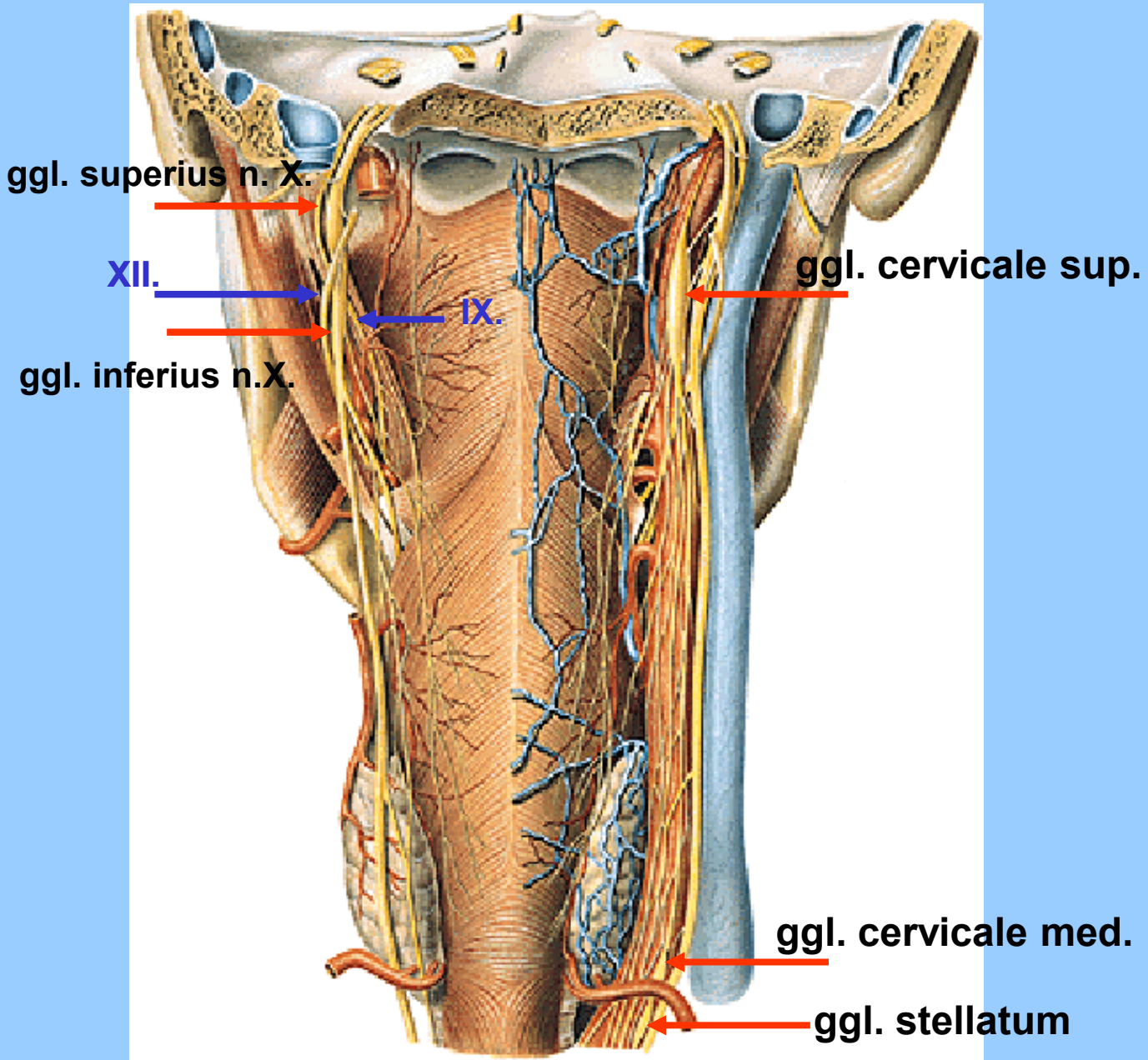
ggl. cervicale med.



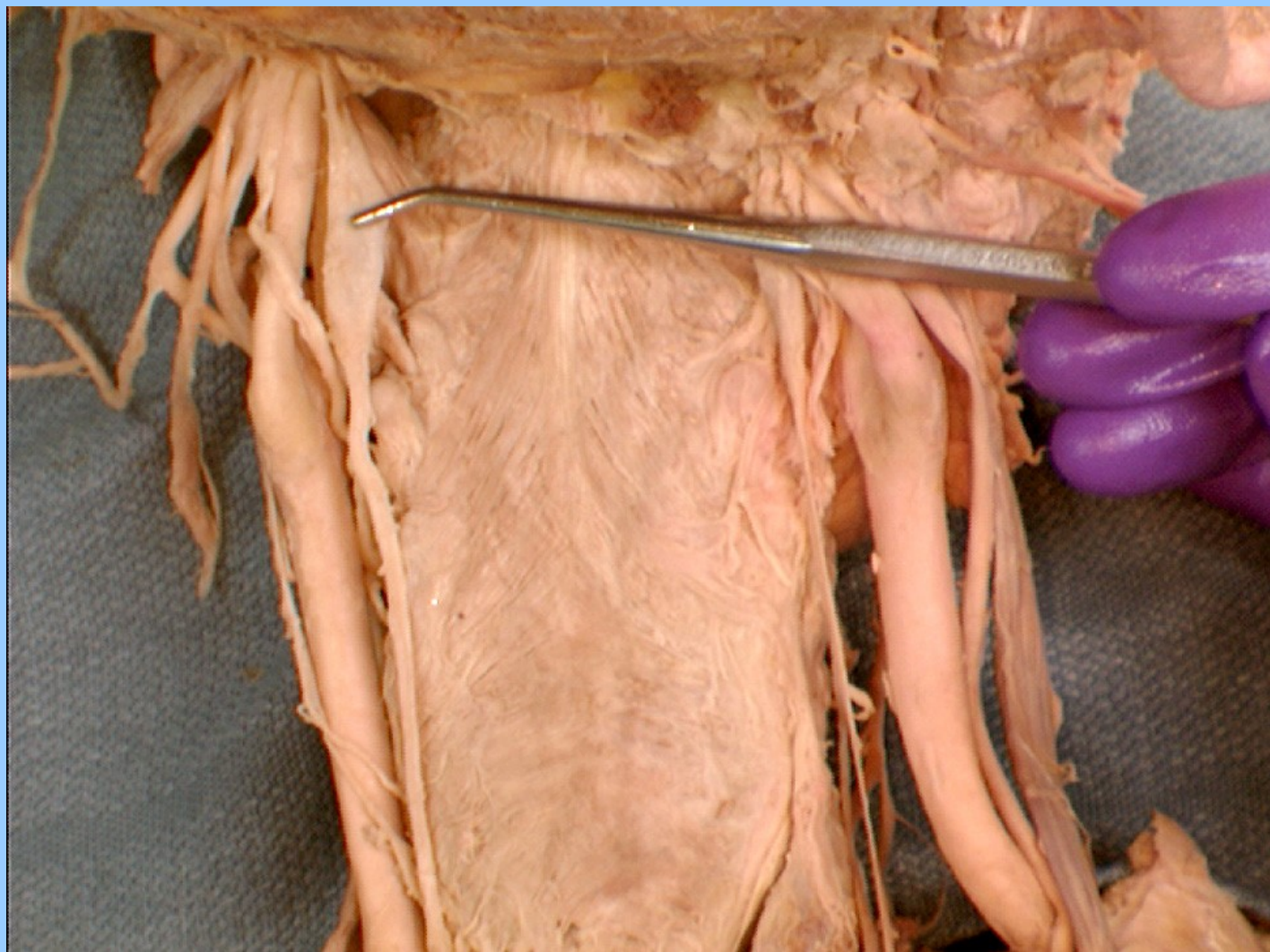
Ganglion cervicale med. et stellatum



Ganglion cervicale sup. et med.



GANGLION CERVICALE SUP.



INNERVATION OF THE HEART

ggl. cervicale sup.



ggl. cervicale med.



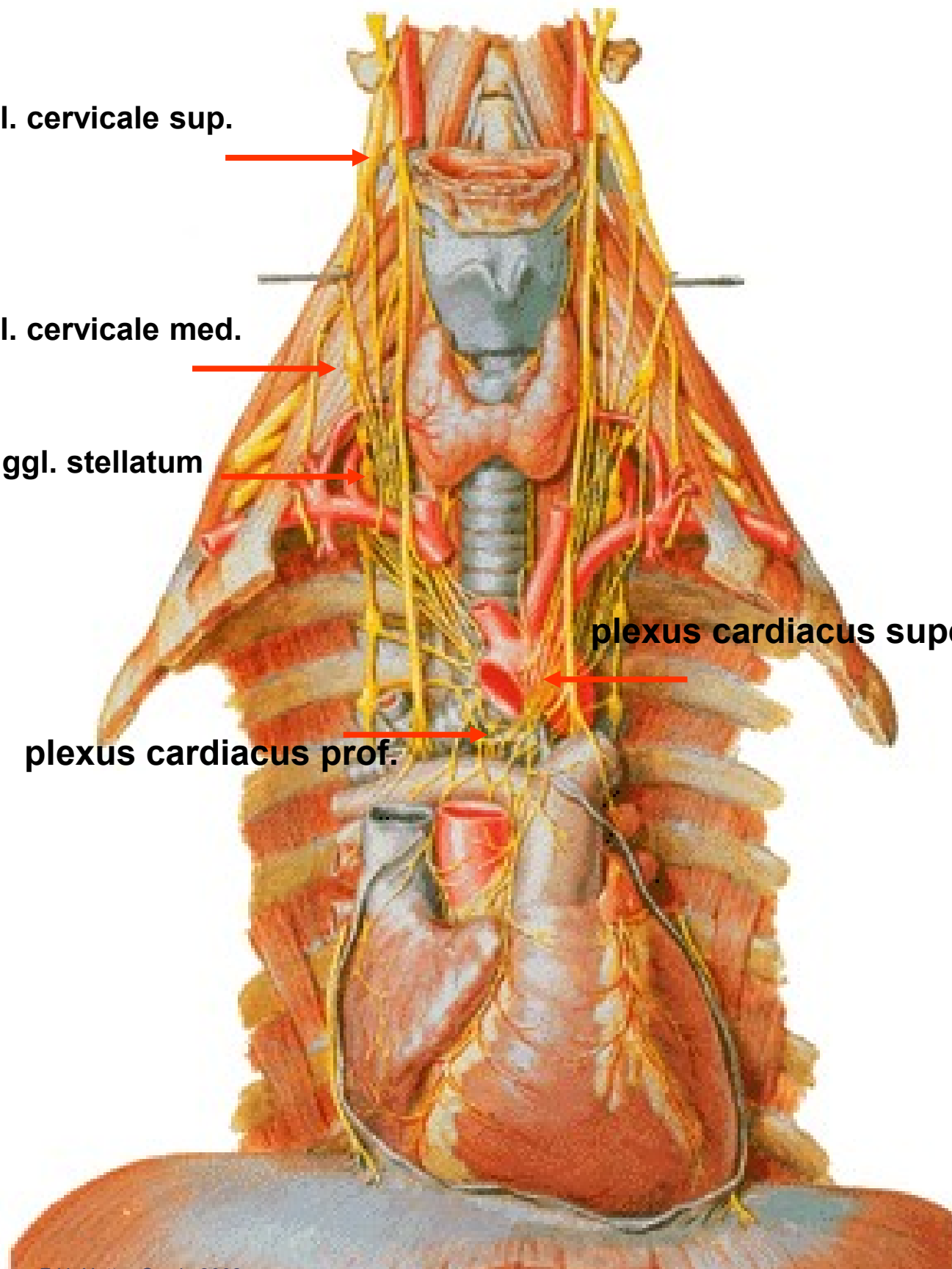
ggl. stellatum

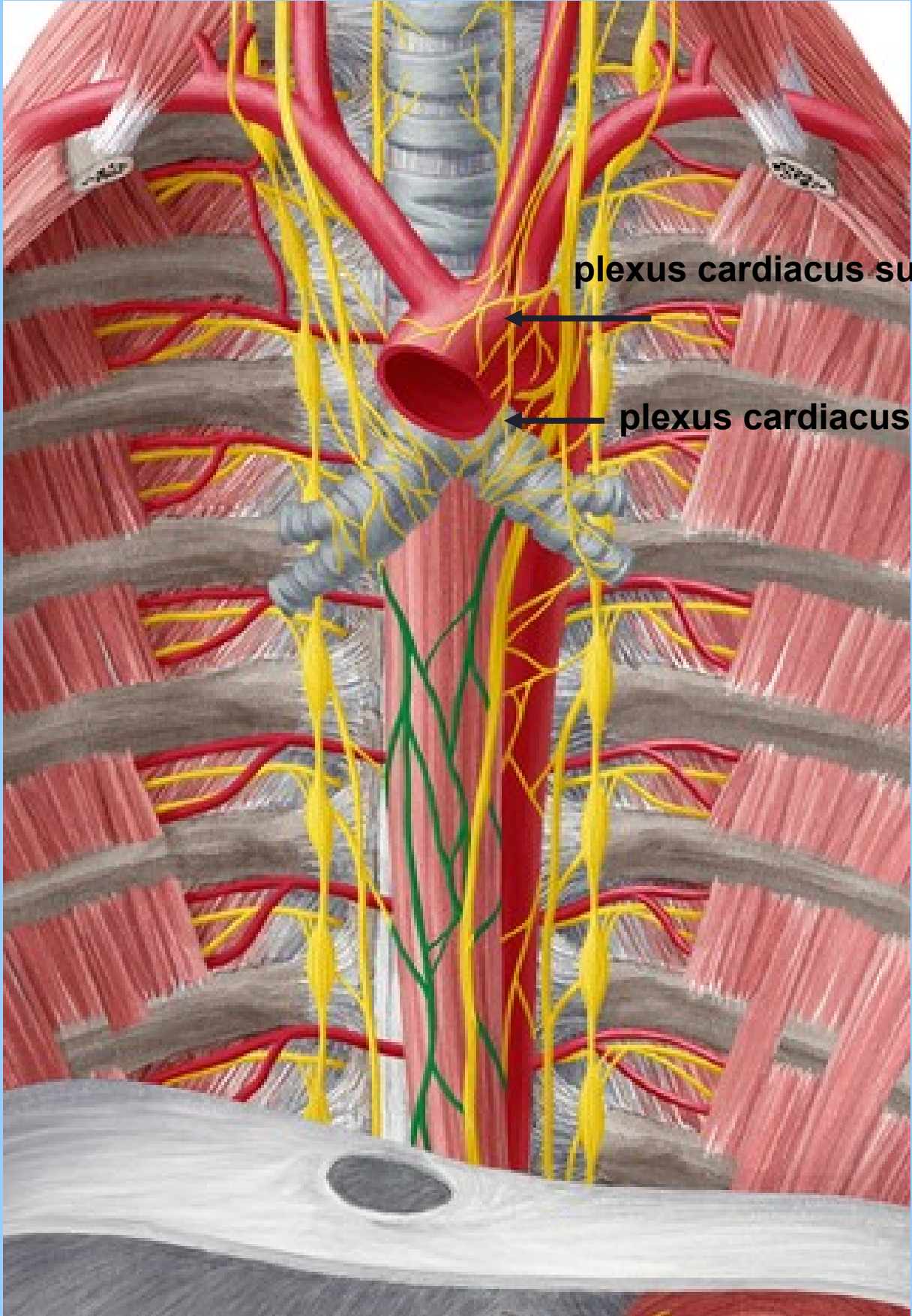


plexus cardiacus superf.



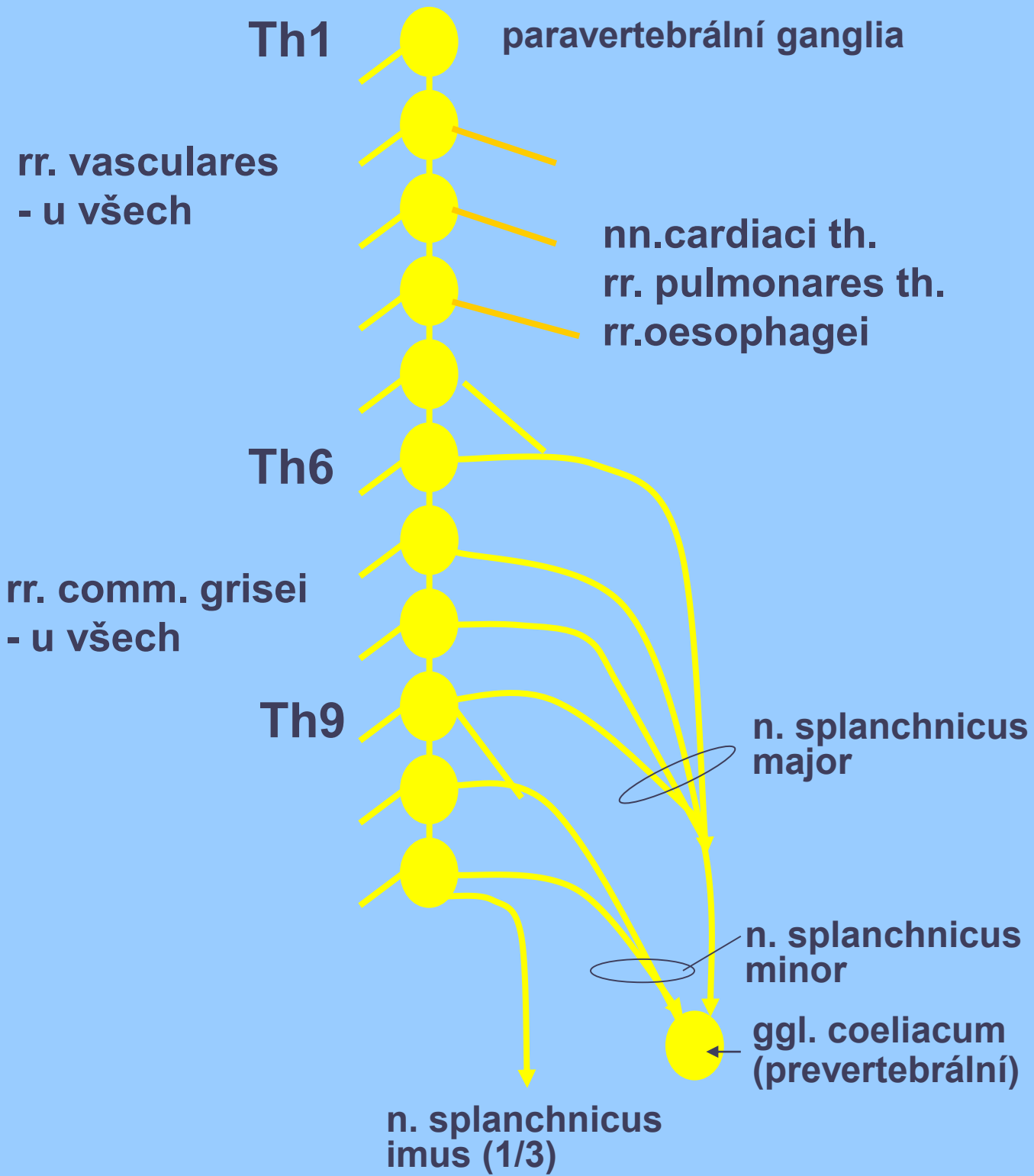
plexus cardiacus prof.





plexus cardiacus superf.

plexus cardiacus prof.



Prevertebrální ganglia

ggl. coeliacum

ggl. mesentericum superius

ggl. mesentericum inferius

ggl. aorticorenale

Plexus aorticus lumbalis

ggl./plexus coeliacus

plexus gastricus dx., sn.

plexus hepaticus

plexus lienalis

plexus duodenalis

plexus pancreaticus

plexus uretericus

plexus testicularis/ovaricus

ggl. mesentericum superius

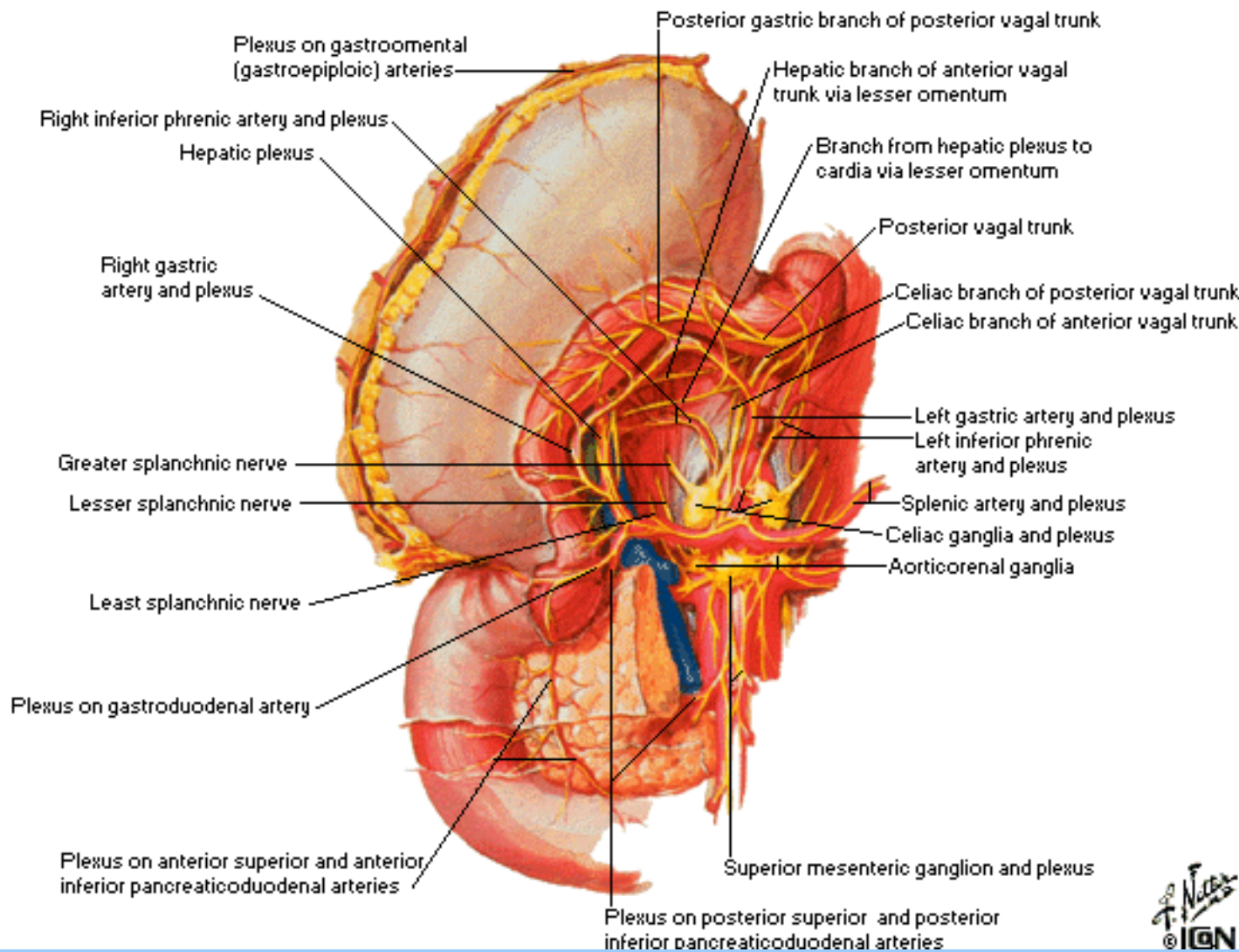
plexus mesentericus superior

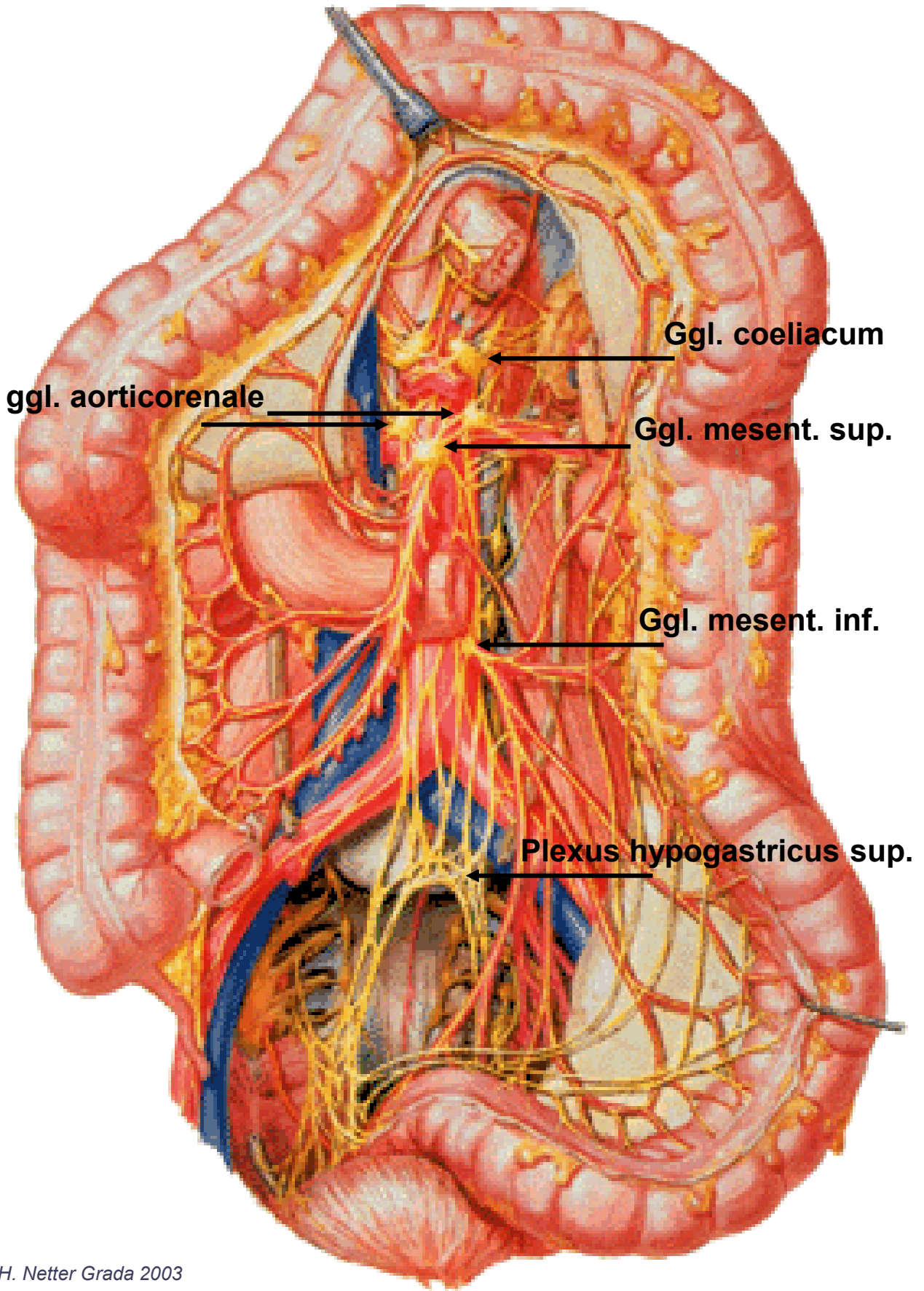
ggl. mesentericum inferius

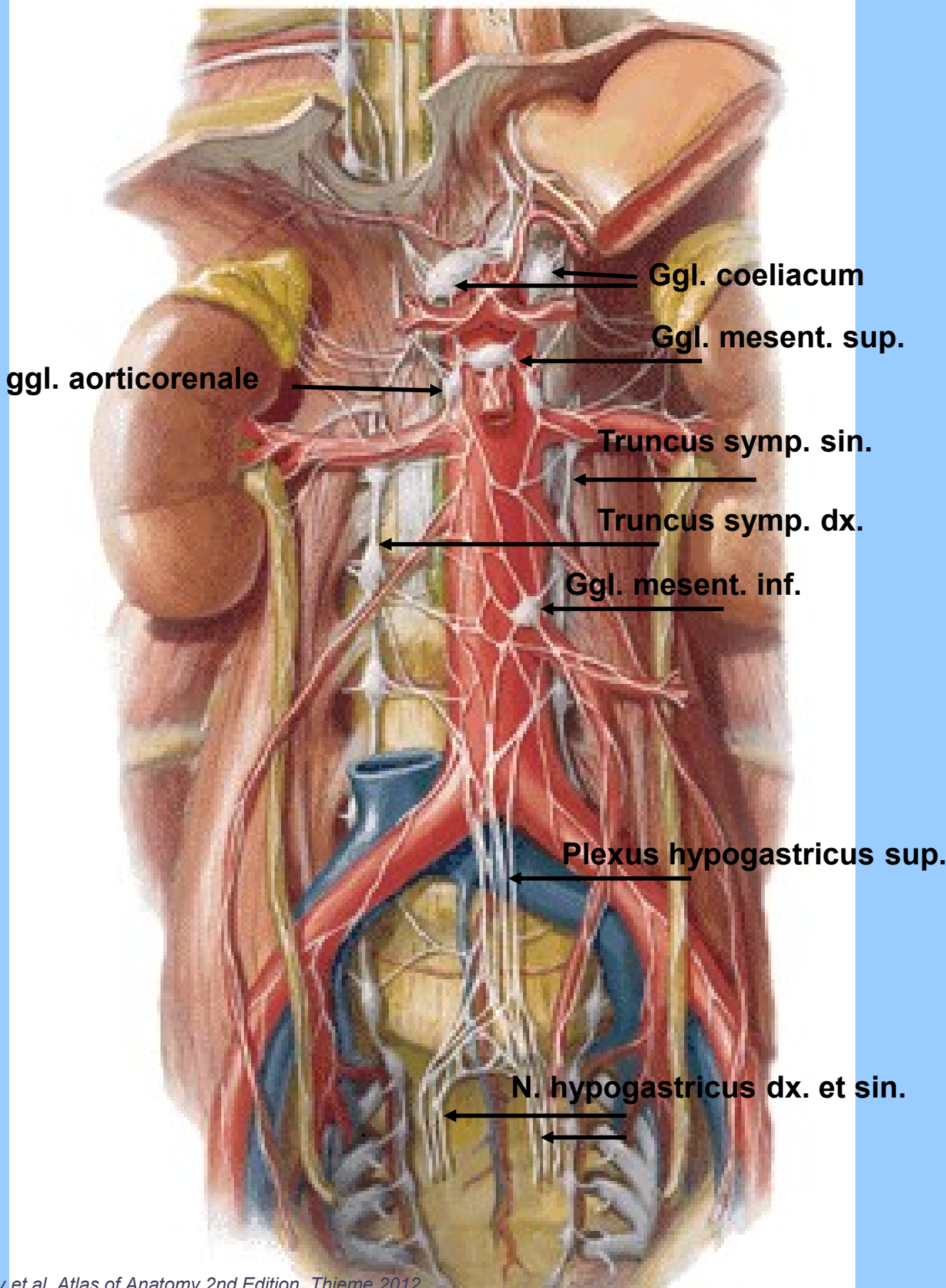
plexus mesentericus inferior

plexus rectalis superior

Plexus hypogastricus superior et inferior







Ggl. coeliacum

Ggl. mesent. sup.

ggl. aorticorenale

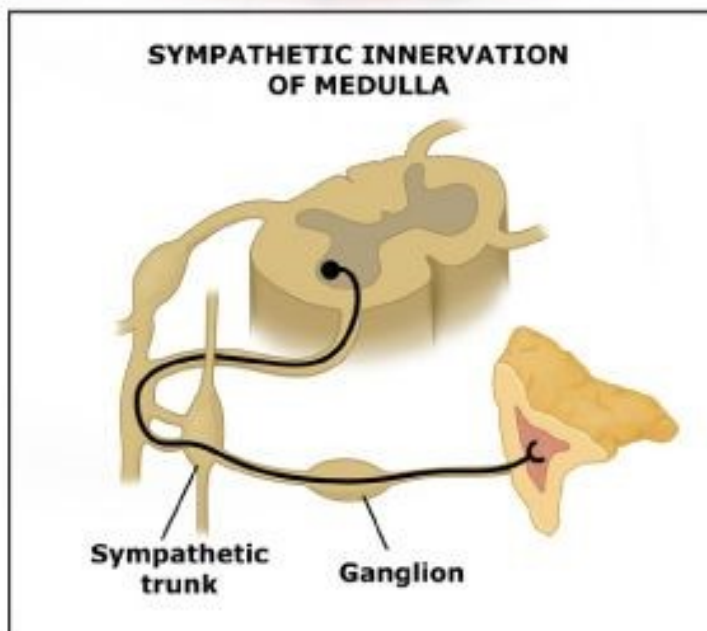
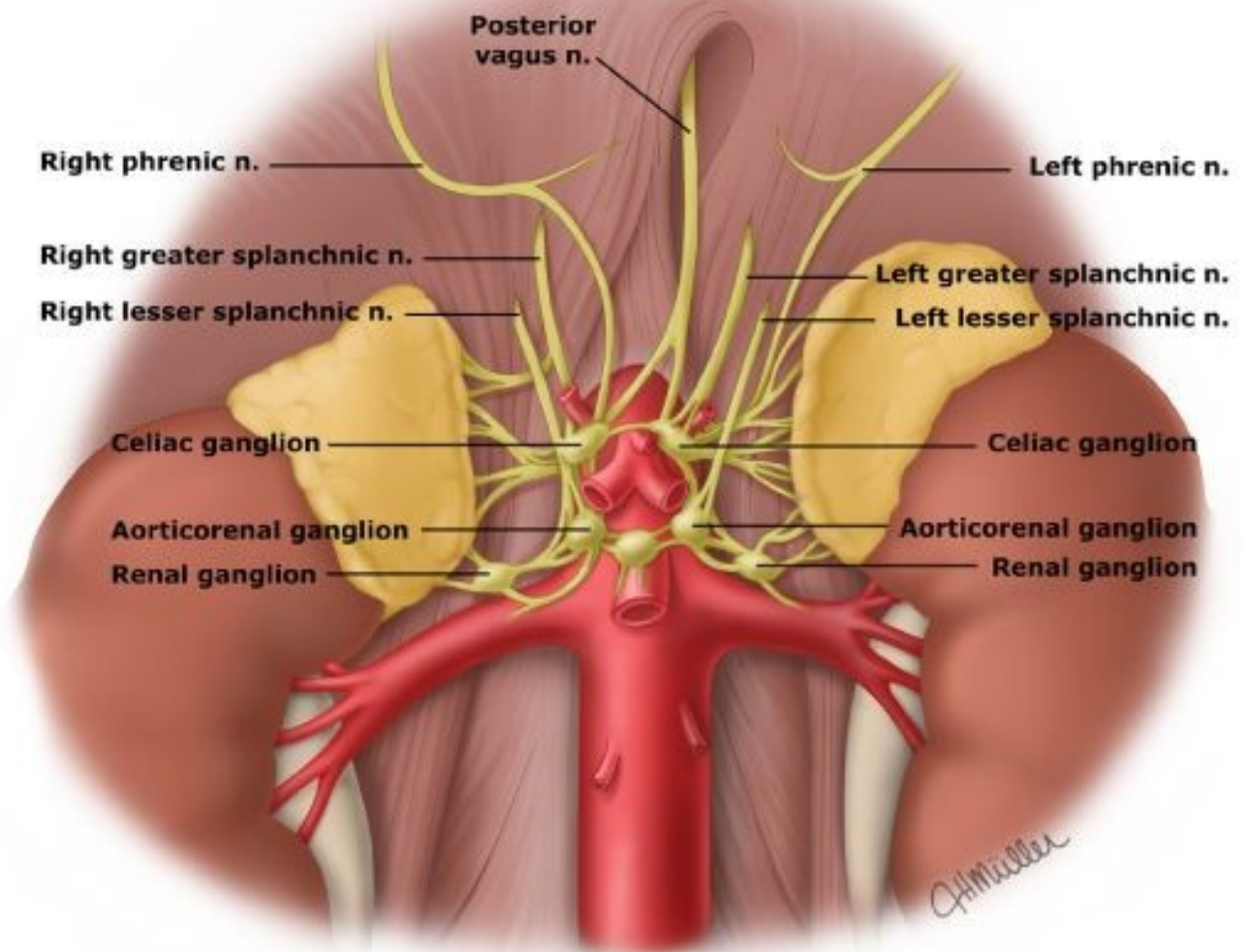
Truncus symp. sin.

Truncus symp. dx.

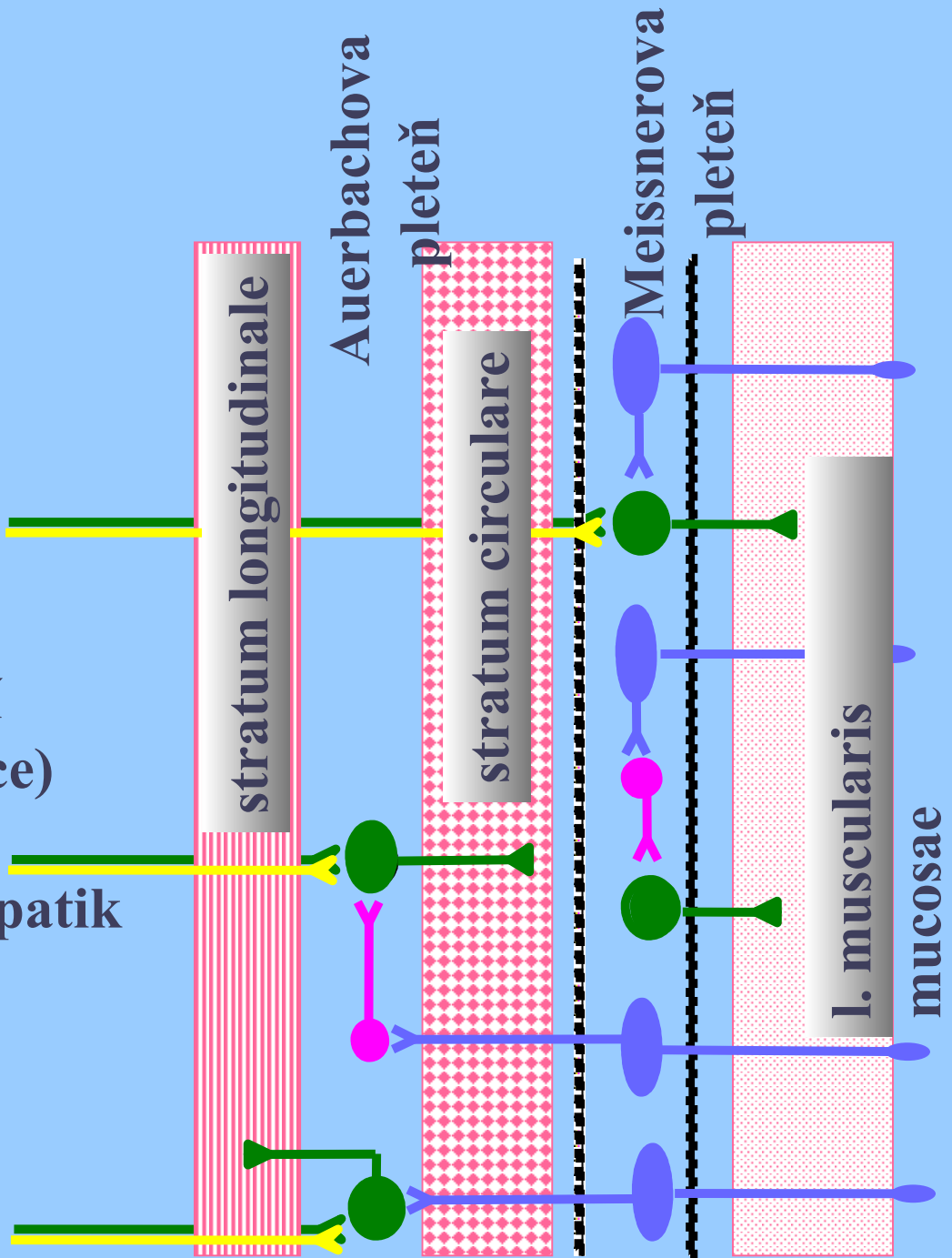
Ggl. mesent. inf.

Plexus hypogastricus sup.

N. hypogastricus dx. et sin.



ovlivnění
(modulace)
symp. a
parasymptatik
em



enterický motorický neuron



enterický interneuron



enterický viscerosenzorický neuron