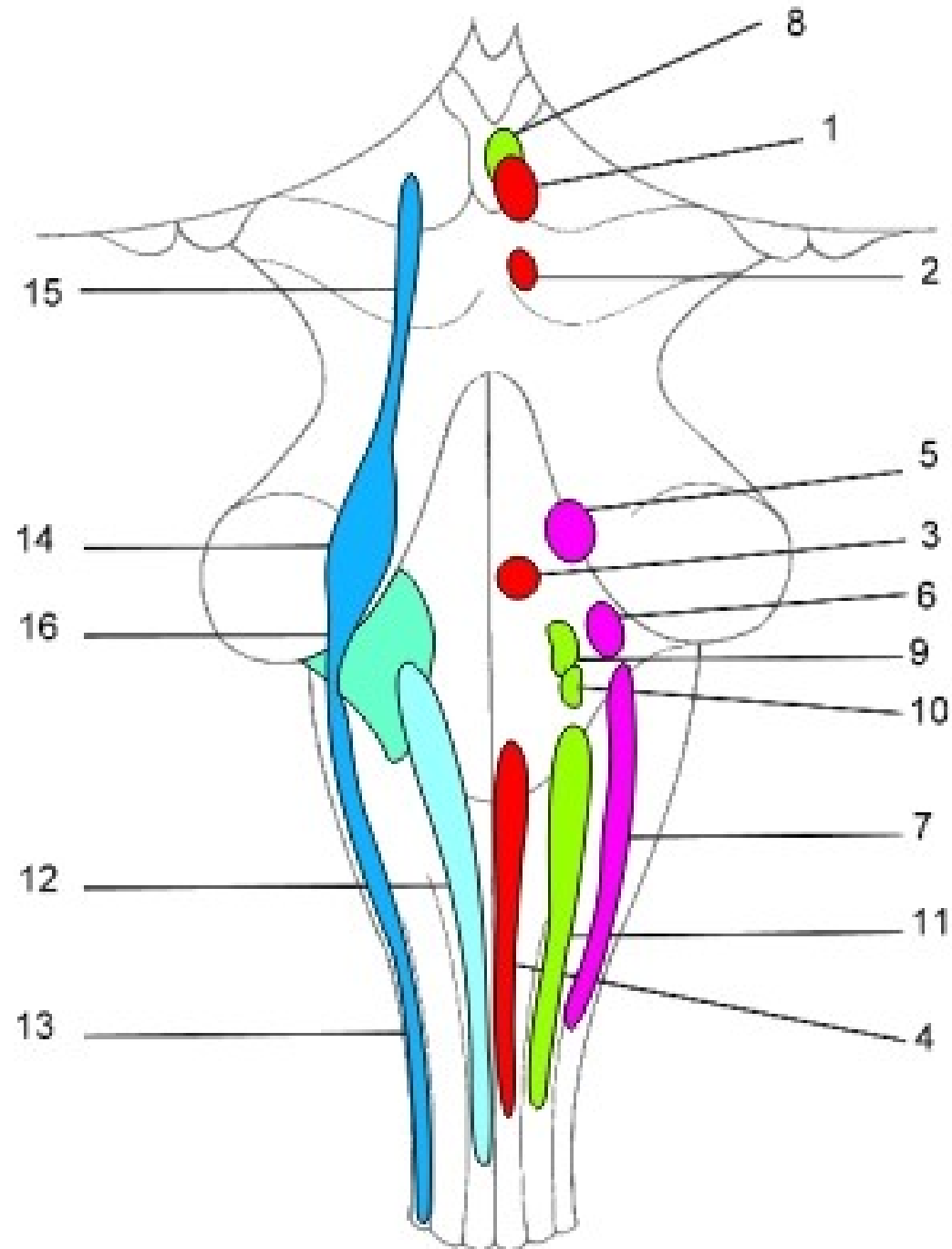
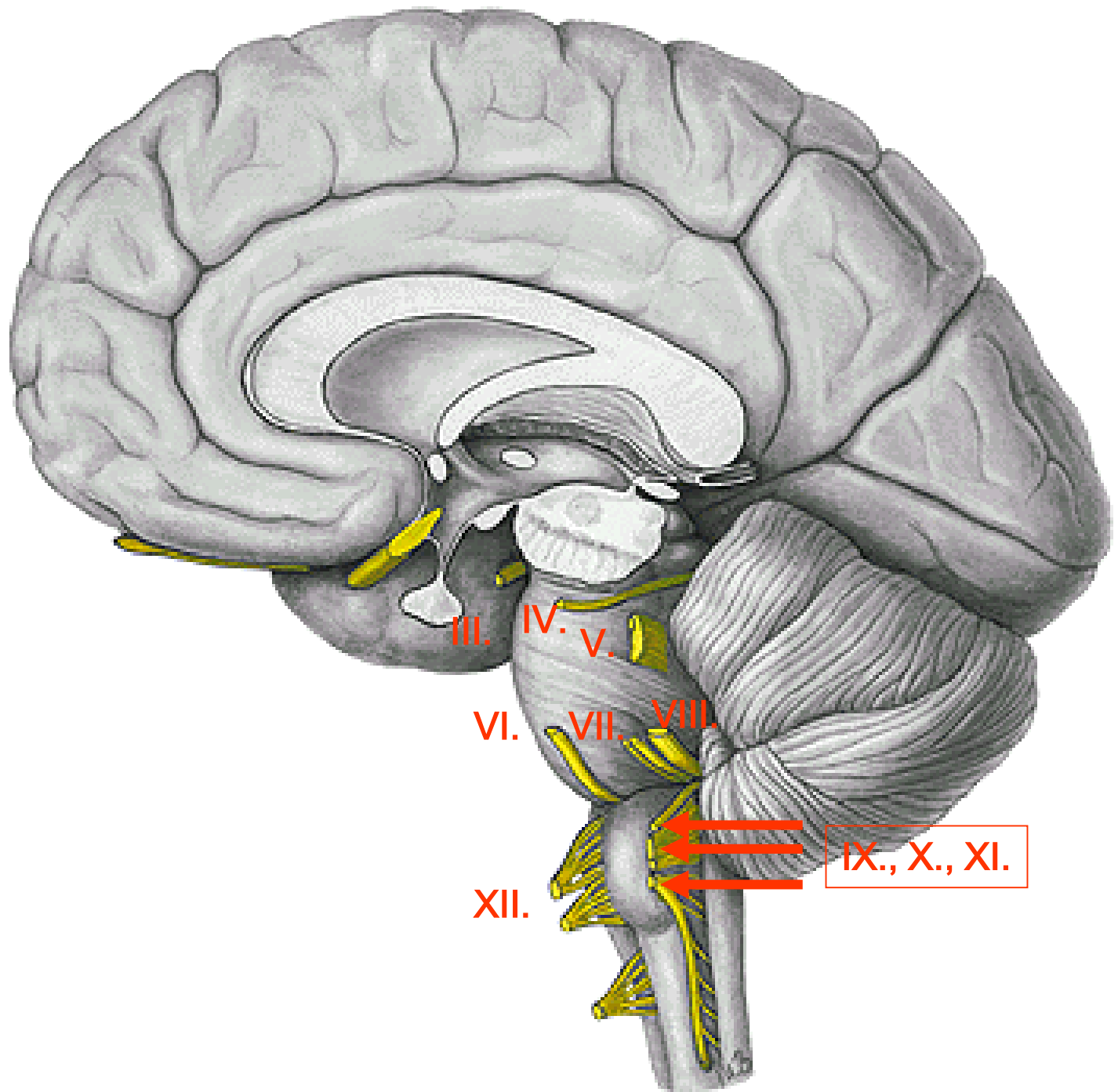
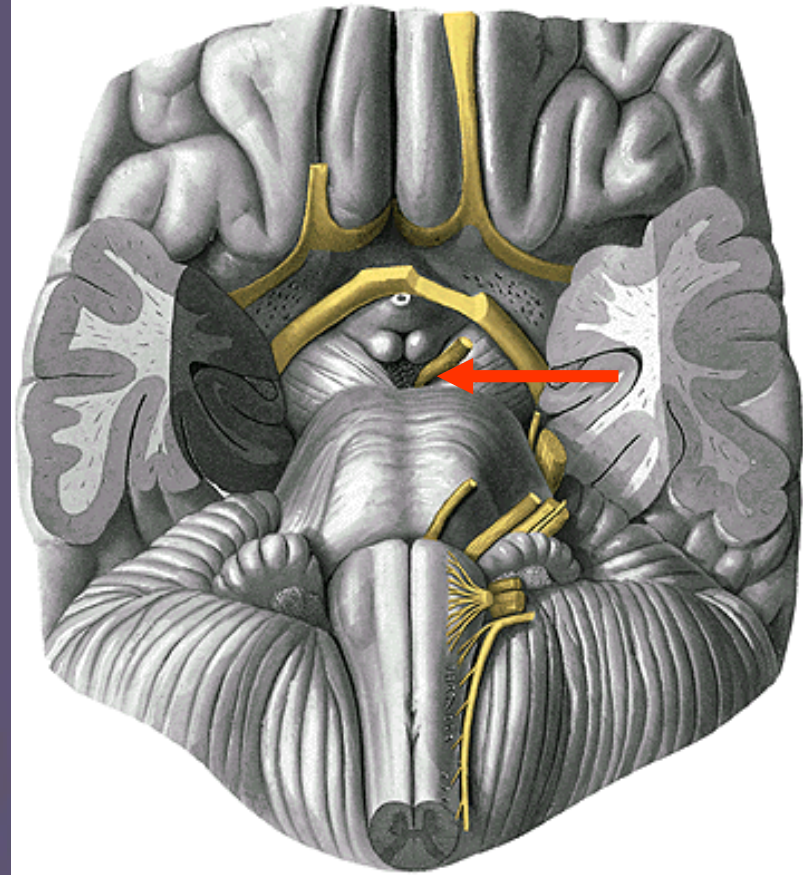
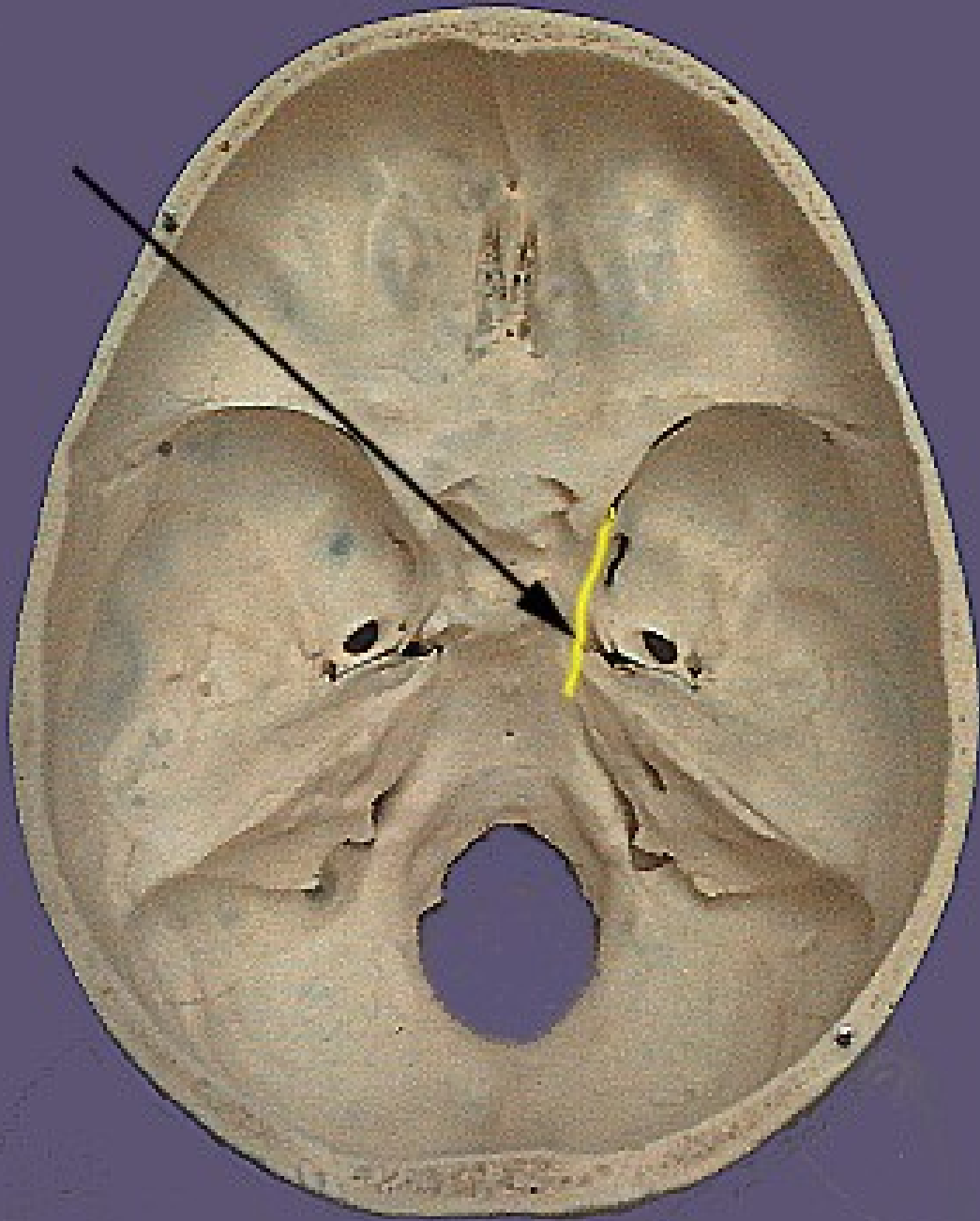


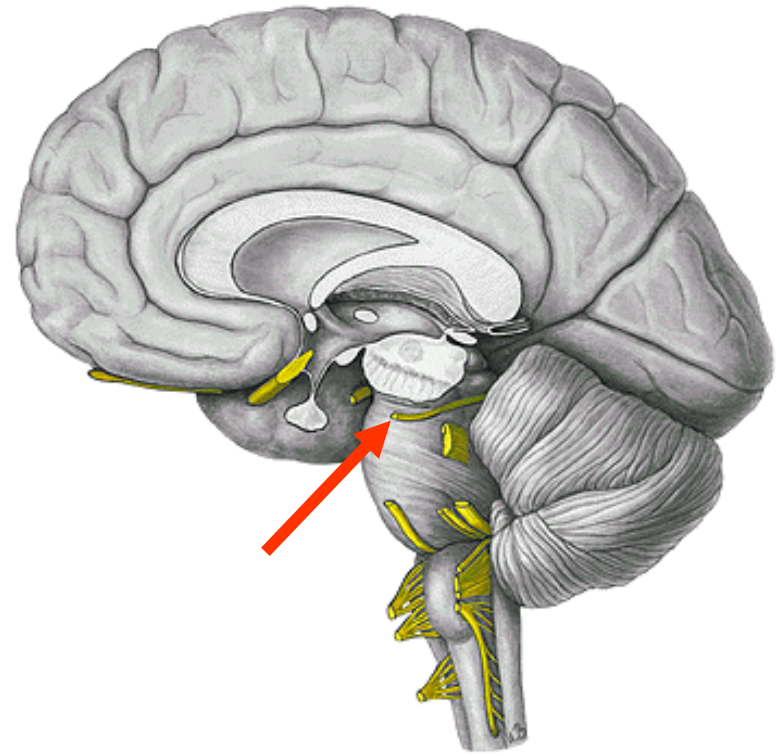
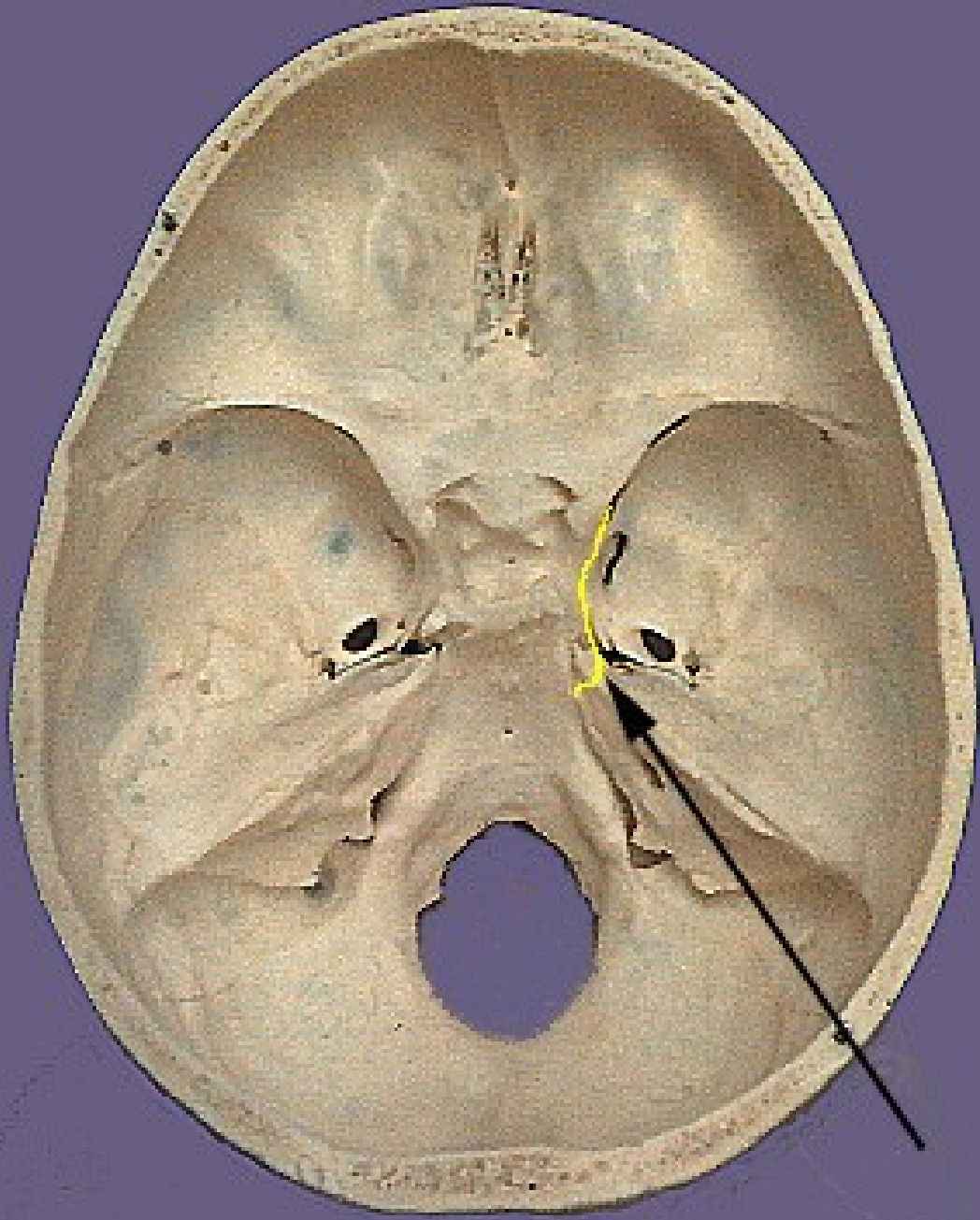
- 1 - ncl. motorius (originis) n. III.
- 2 - ncl. motorius (originis) n. IV.
- 3 - ncl. motorius (originis) n. VI.
- 4 - ncl. motorius (originis) n. XII.
- 5 - ncl. motorius (originis) n. VII.
- 6 - ncl. motorius (masticatorius) n. V.
- 7 - ncl. motorius (originis) n.
- 8 - ncl. parasympathicus n. III (ncl. E.W.)
- 9 - ncl. parasympathicus n. VII.
- 10 - ncl. parasympathicus n. IX.
- 11 - ncl. parasympathicus n. X.
- 12 - ncl. solitarius
- 13 - ncl. spinalis n. V.
- 14 - ncl. principalis n. V.
- 15 - ncl. mesencephalicus n. V.
- 16 - ncll. cochleares et vestibulares





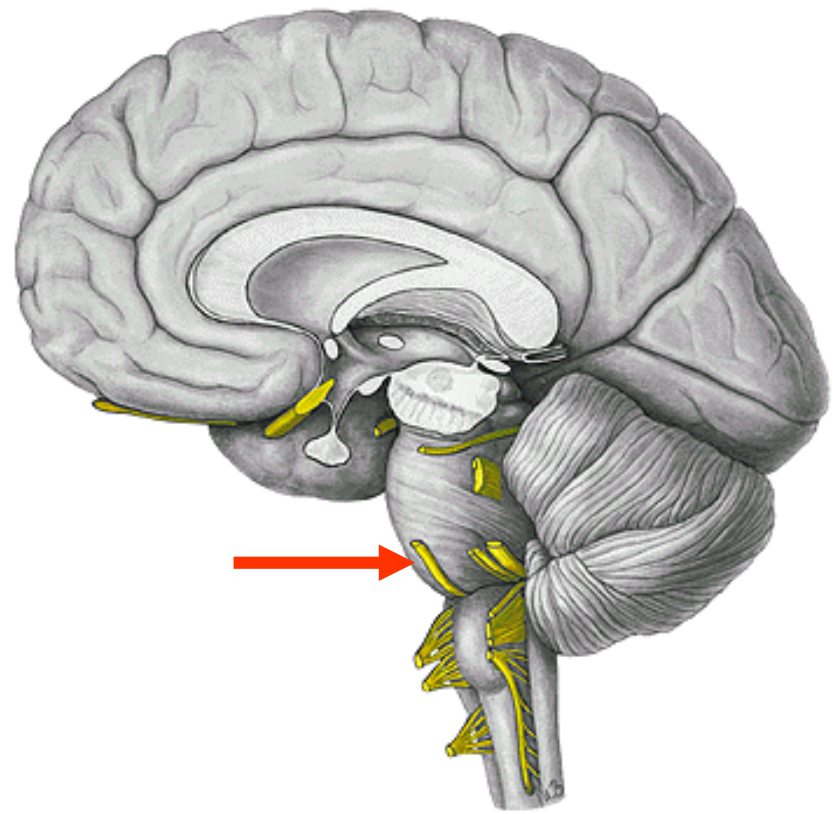
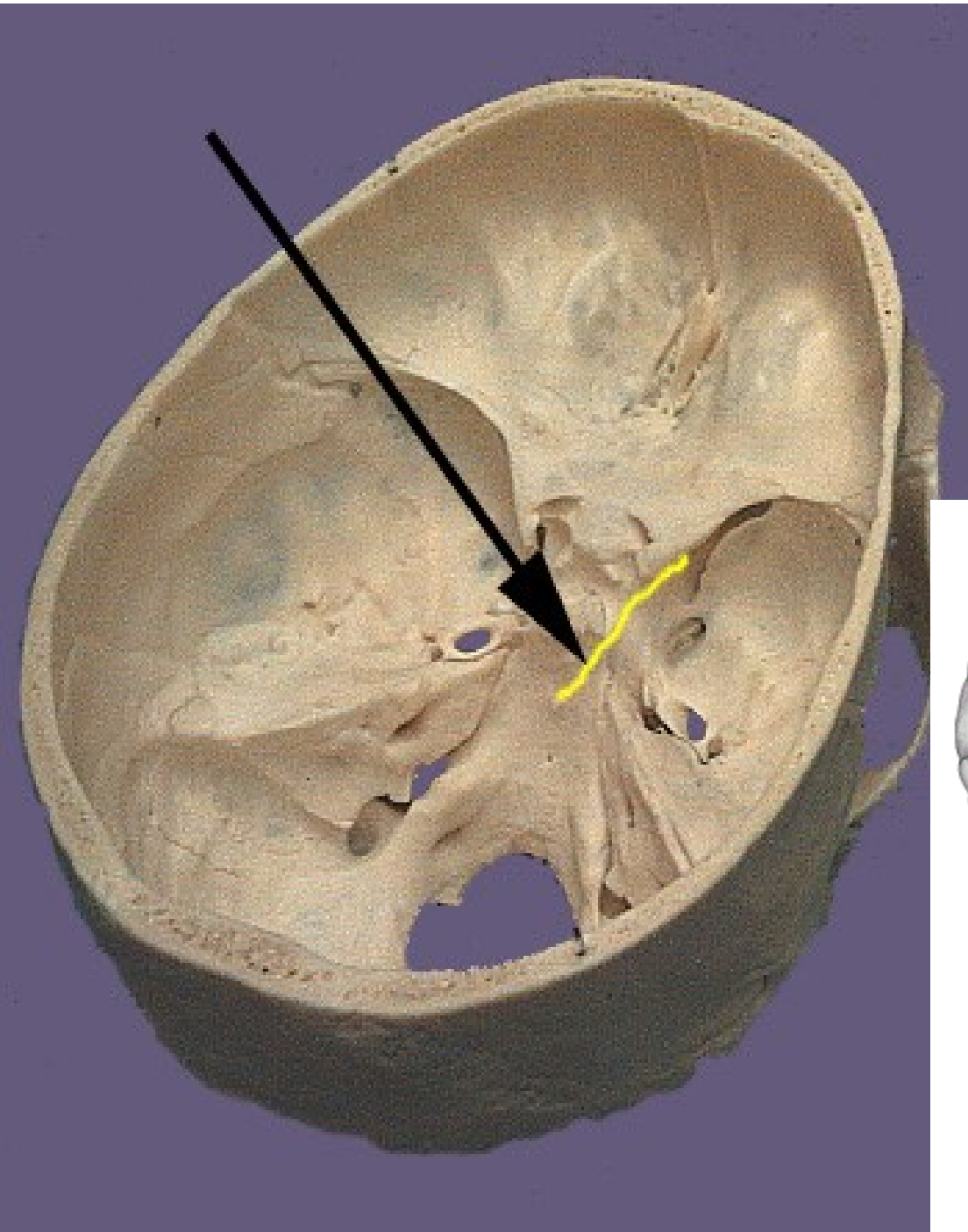


n.III.



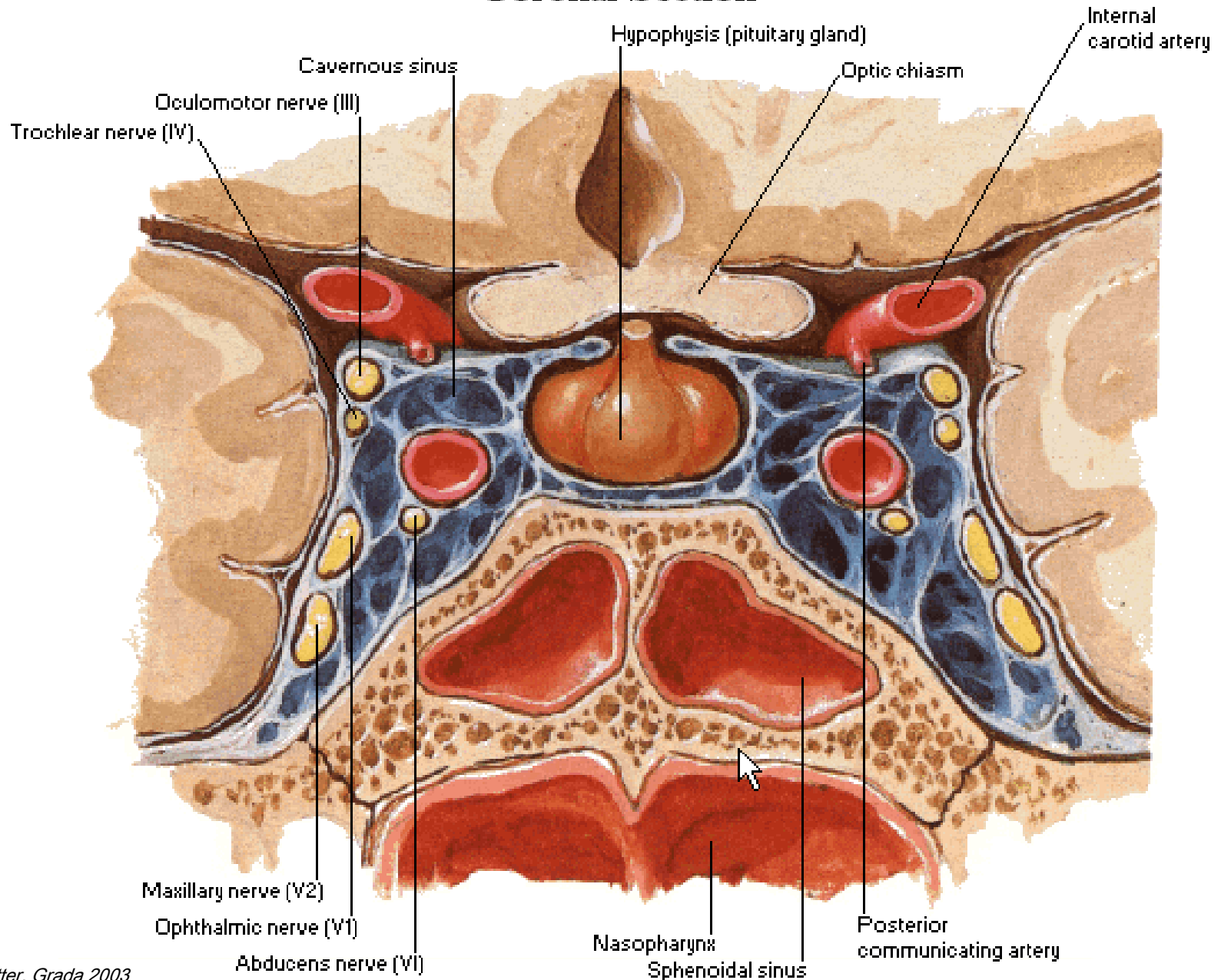
n.IV.

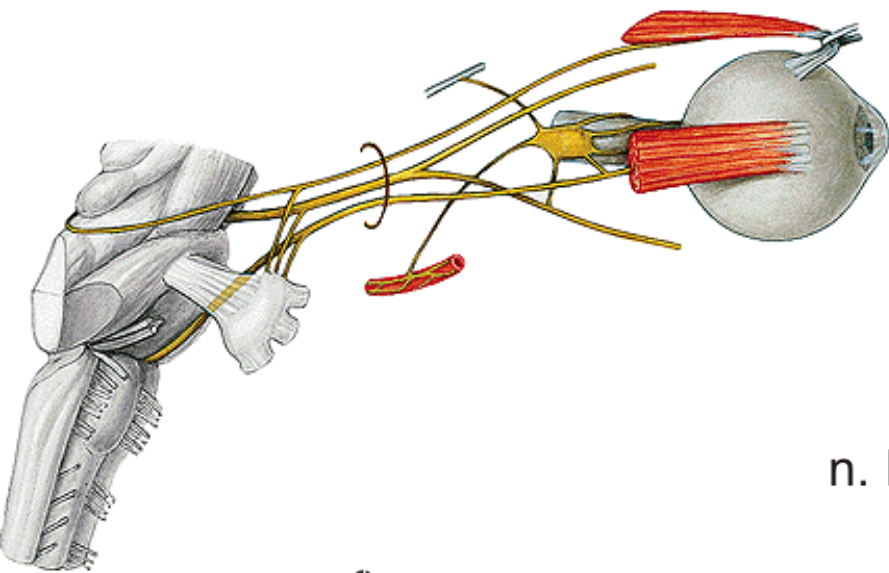
n.VI.



Cavernous Sinus

Coronal Section





Inervační oblasti n. III:

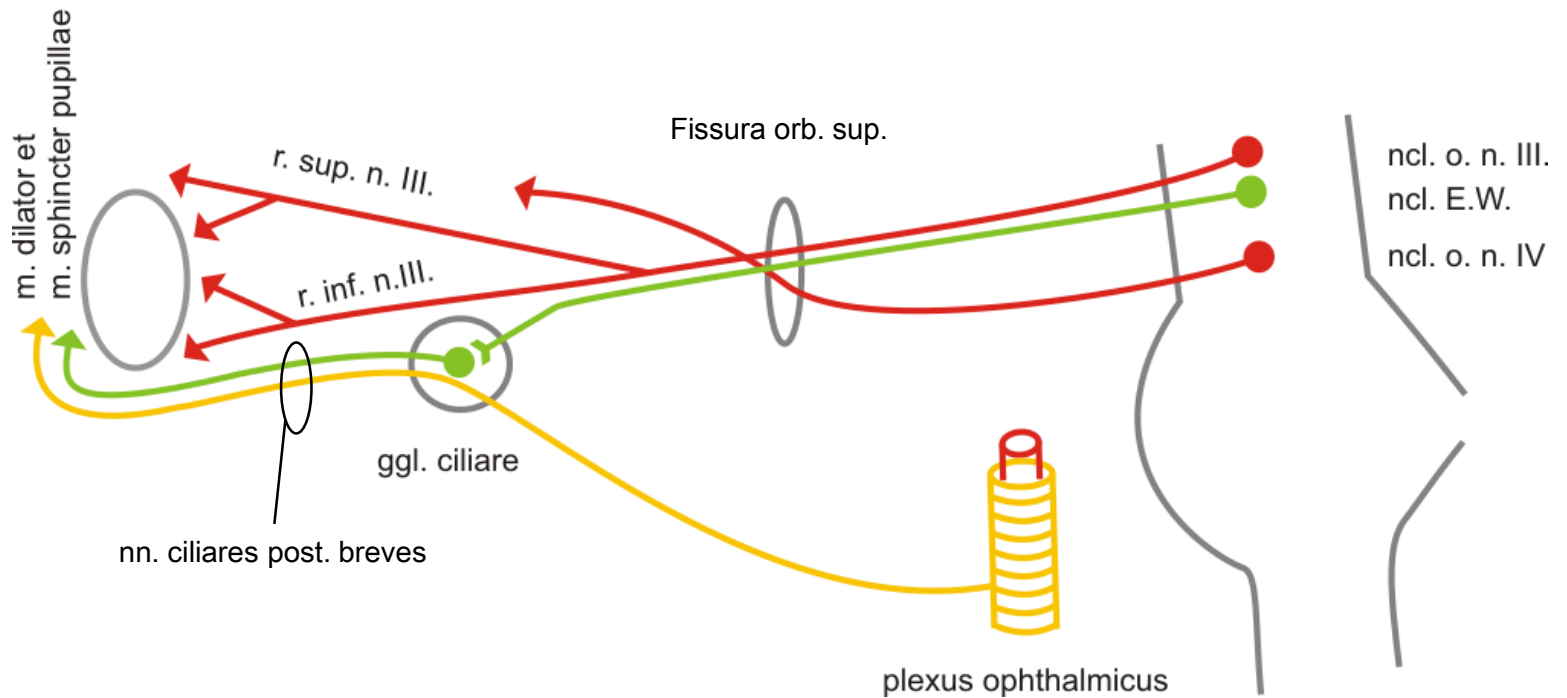
mm. recti orbitales mimo
m. rectus lat.

m. levator palpebrae sup.

m. obliquus inf.

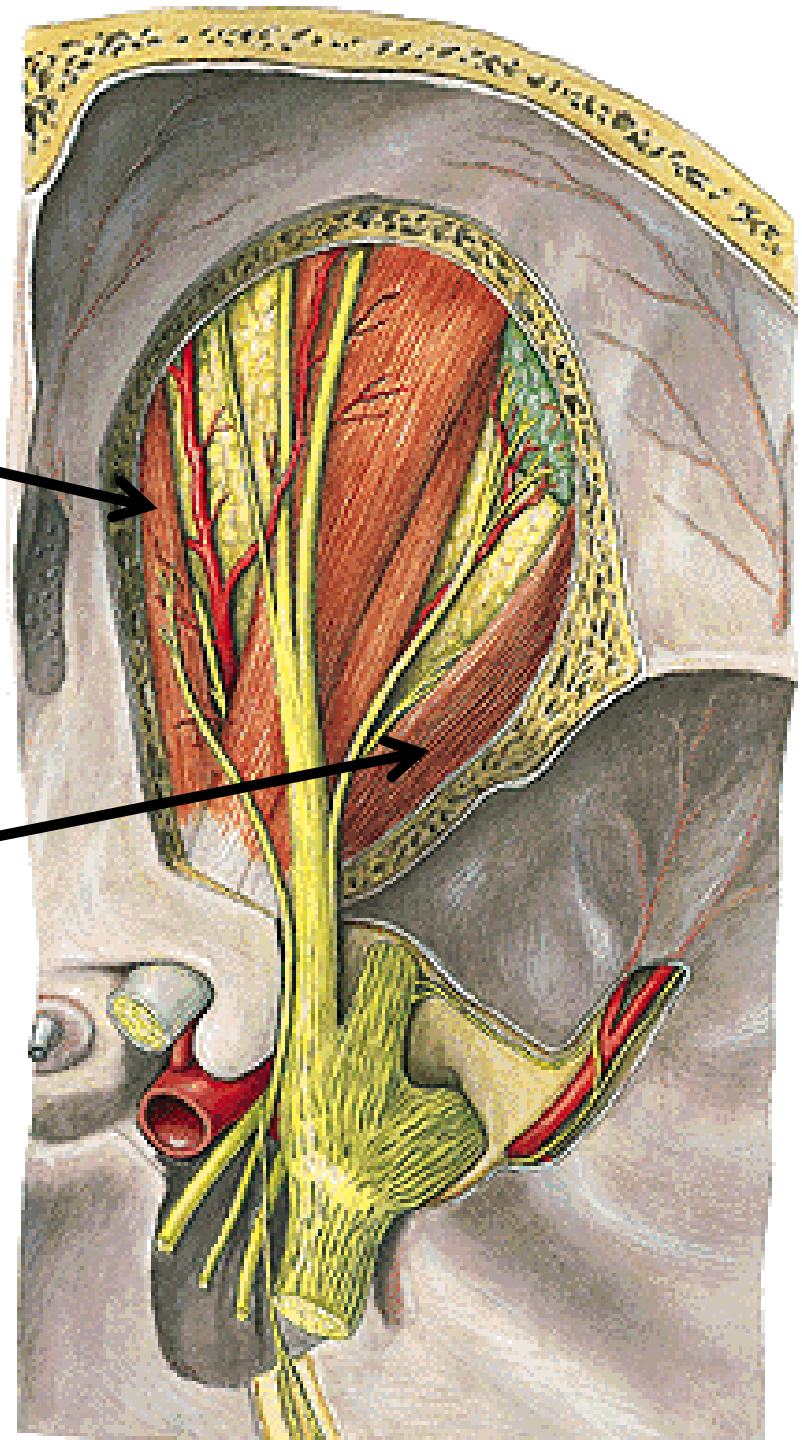
m. dilator (symp.) et sphincter pupillae
(parasymp.)

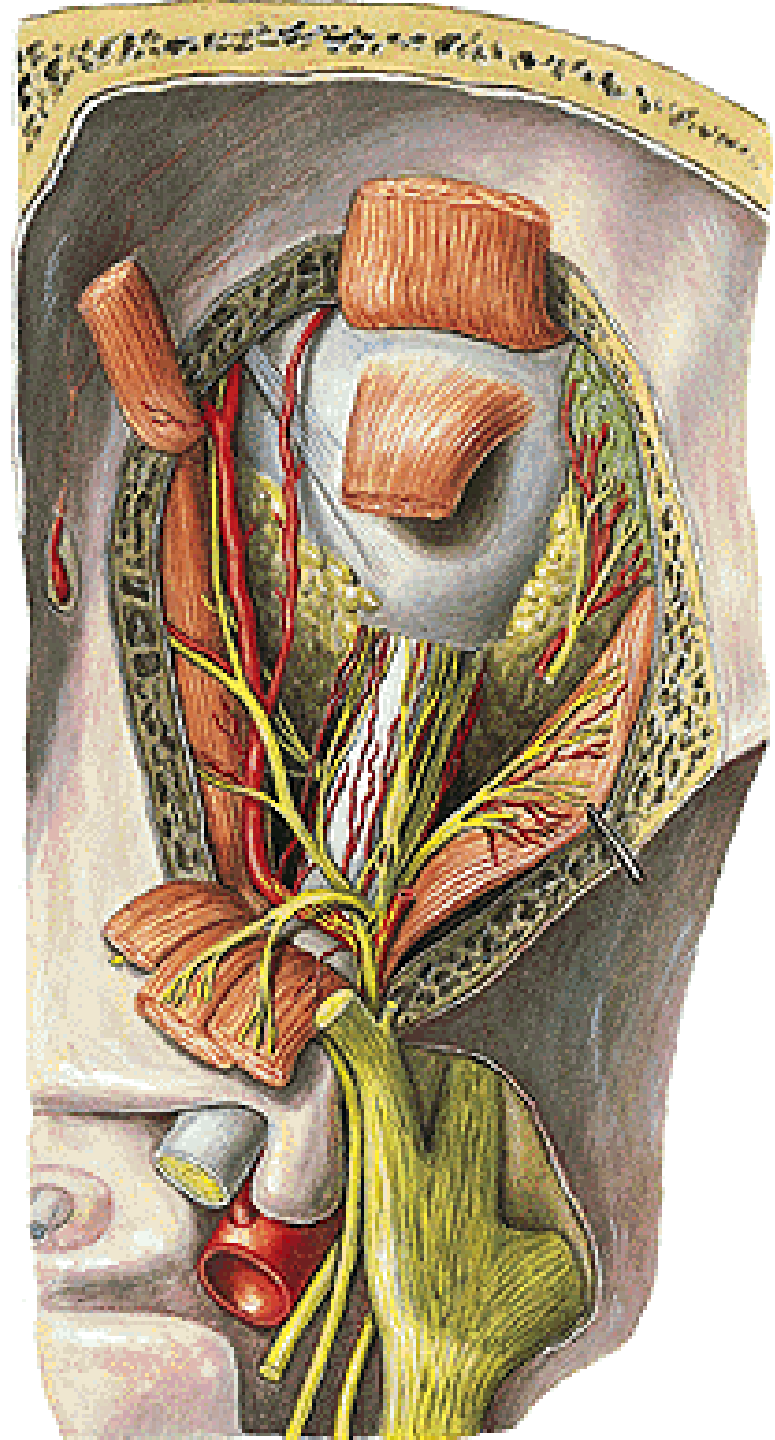
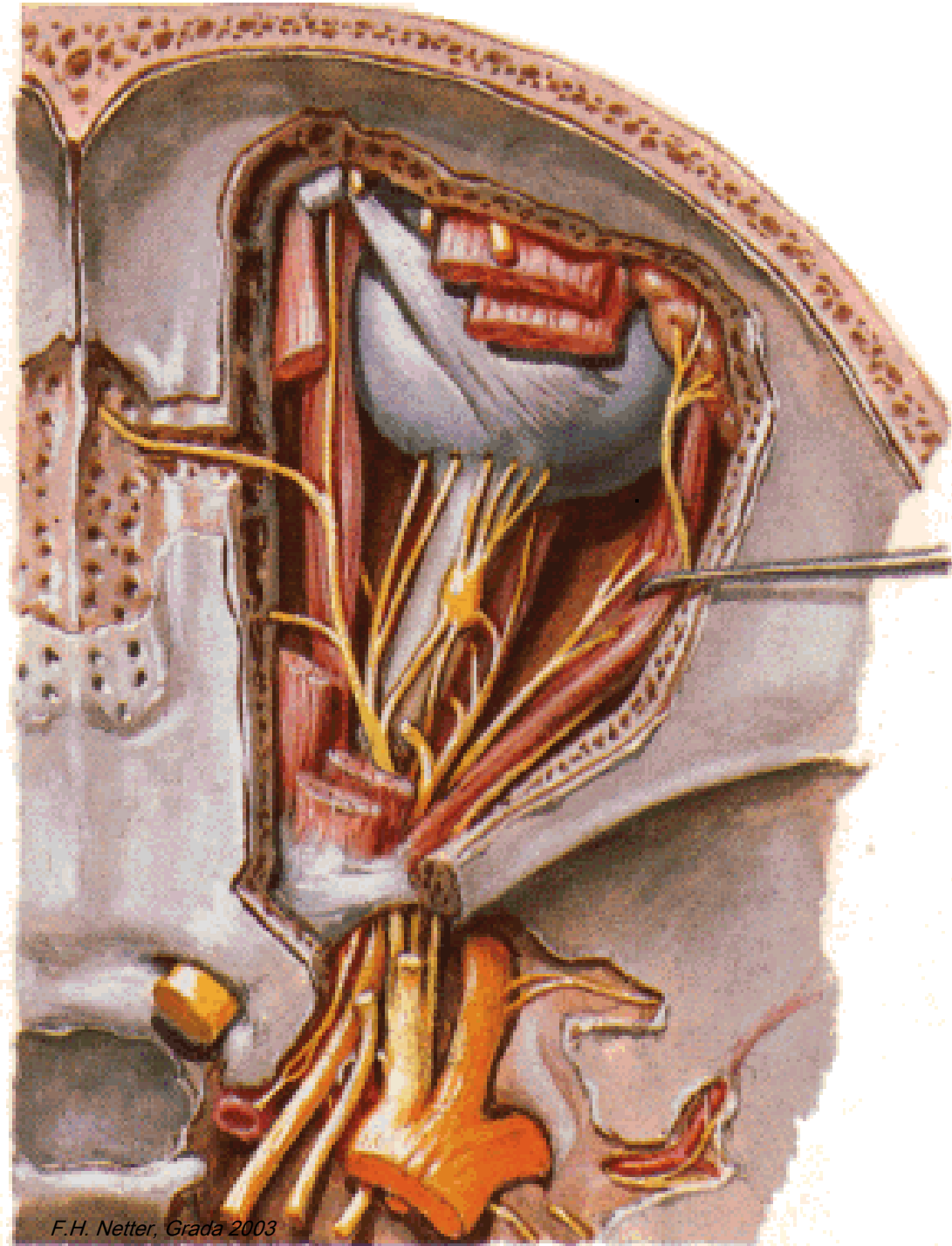
n. III. et IV.



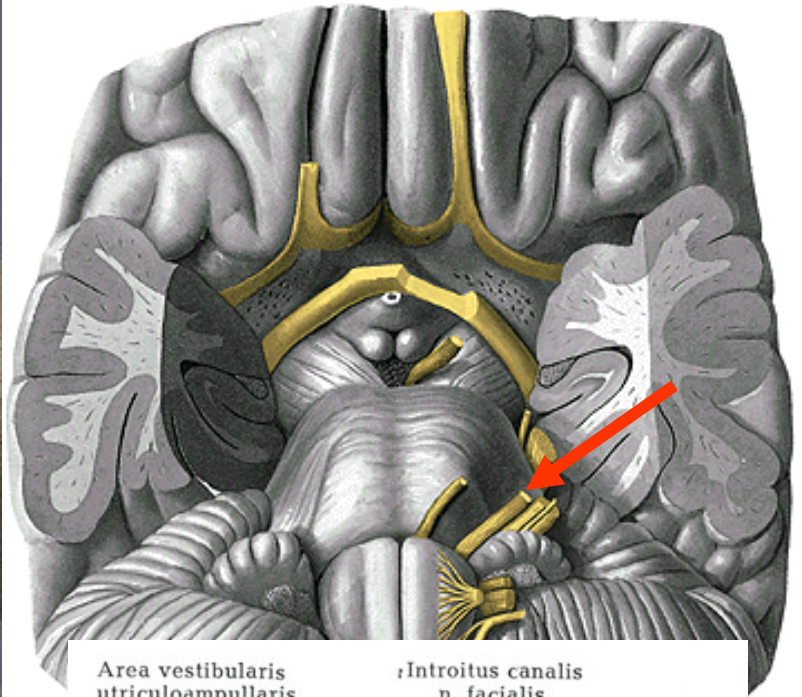
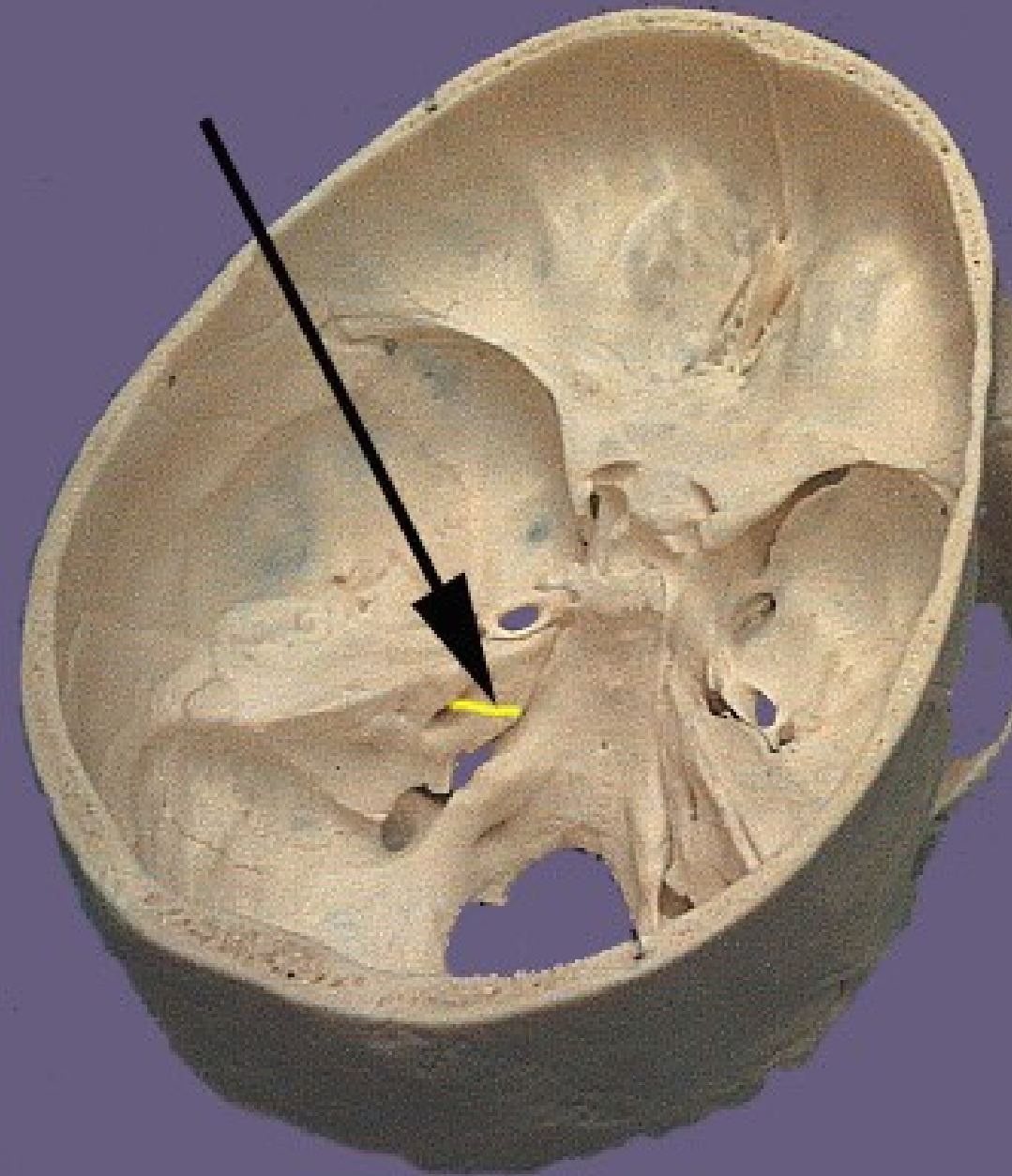
Inervační oblast n. IV.
m. obliquus sup.

Inervační oblast n. VI.
m. rectus lat.





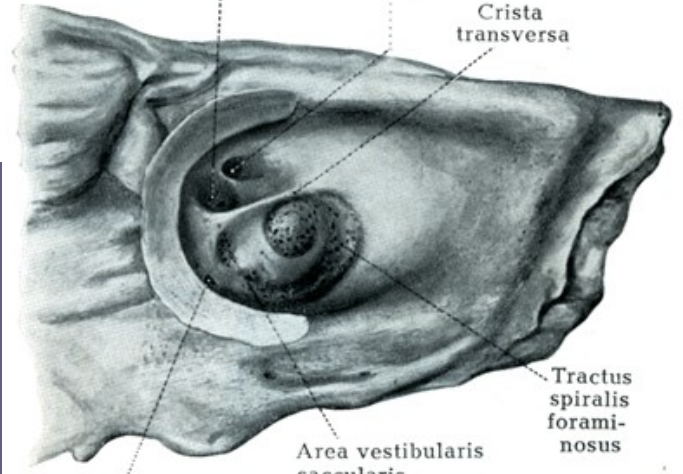
n. VII.



Area vestibularis
utriculoampullaris

Introitus canalis
n. facialis

Crista
transversa

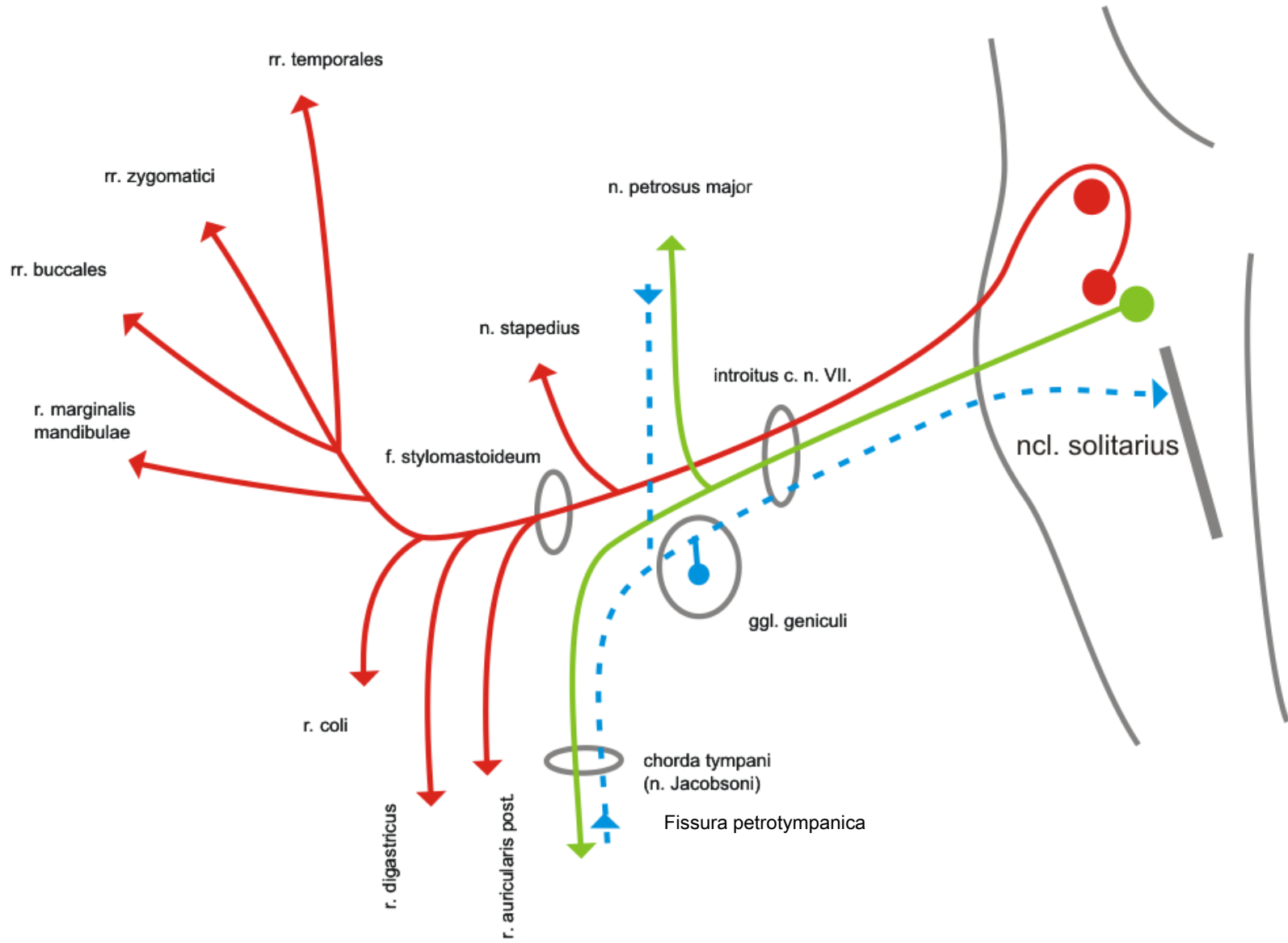


Foramen singulare

Area vestibularis
saccularis

Tractus
spiralis
forami-
nosus

n.VII.



Inervační oblasti n. VII:

Mimické svaly

1. Přes ggl. pterygopalatinum

gl. lacrimalis

drobné slinné žl. ve sliznici
měkkého a tvrdého patra

2. Cestou chorda tympani

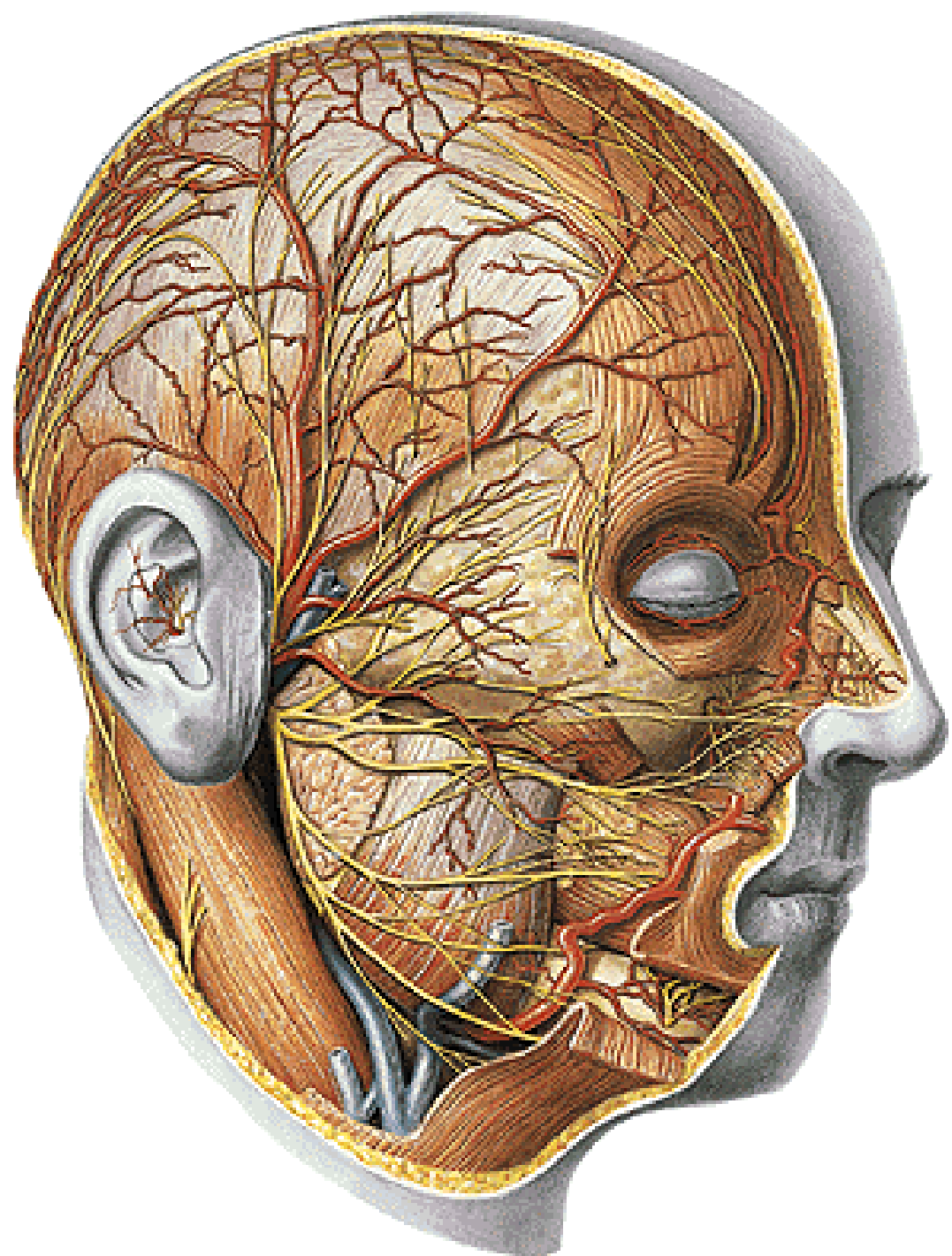
gl. submandibularis

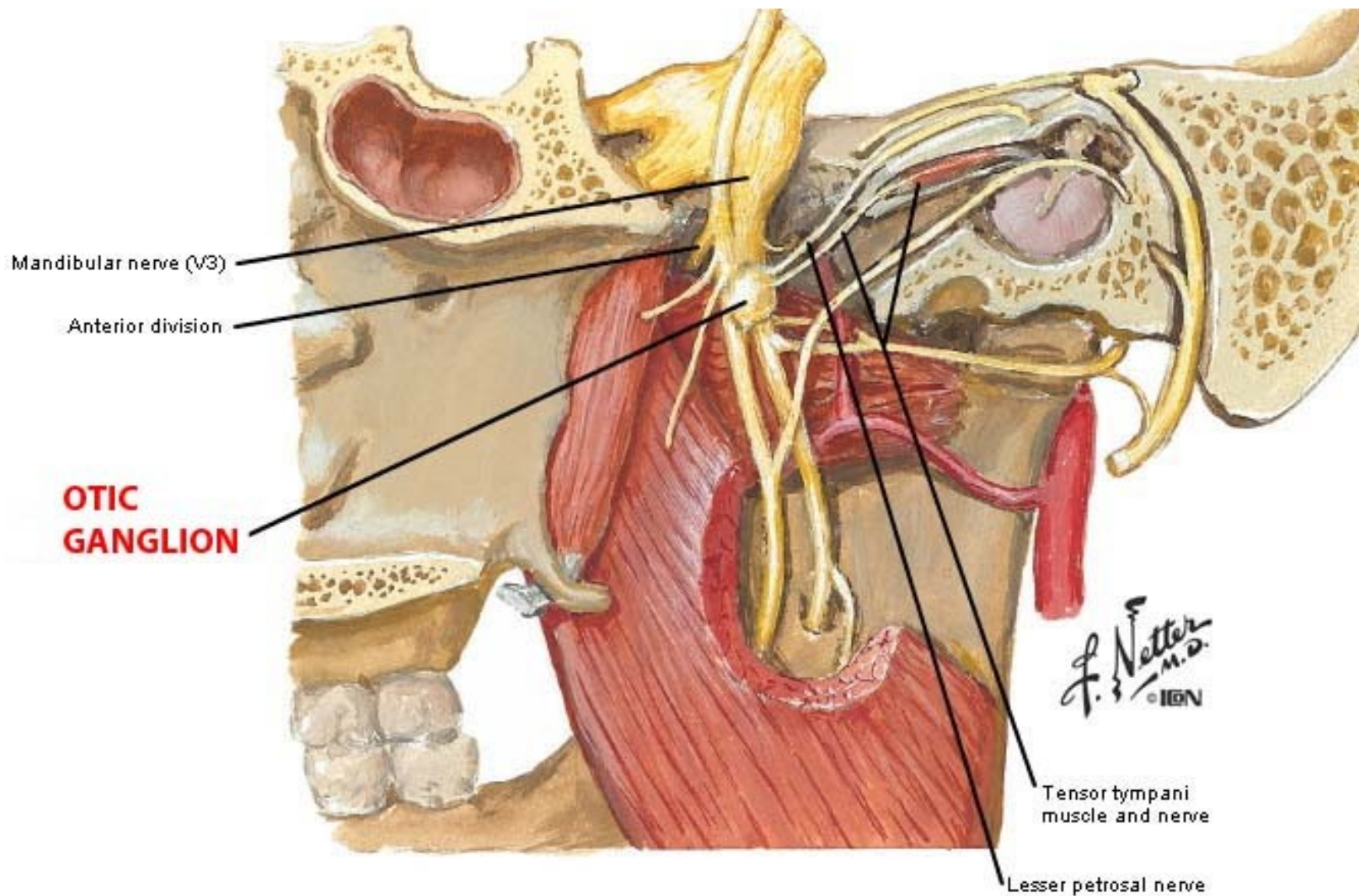
gl. sublingualis

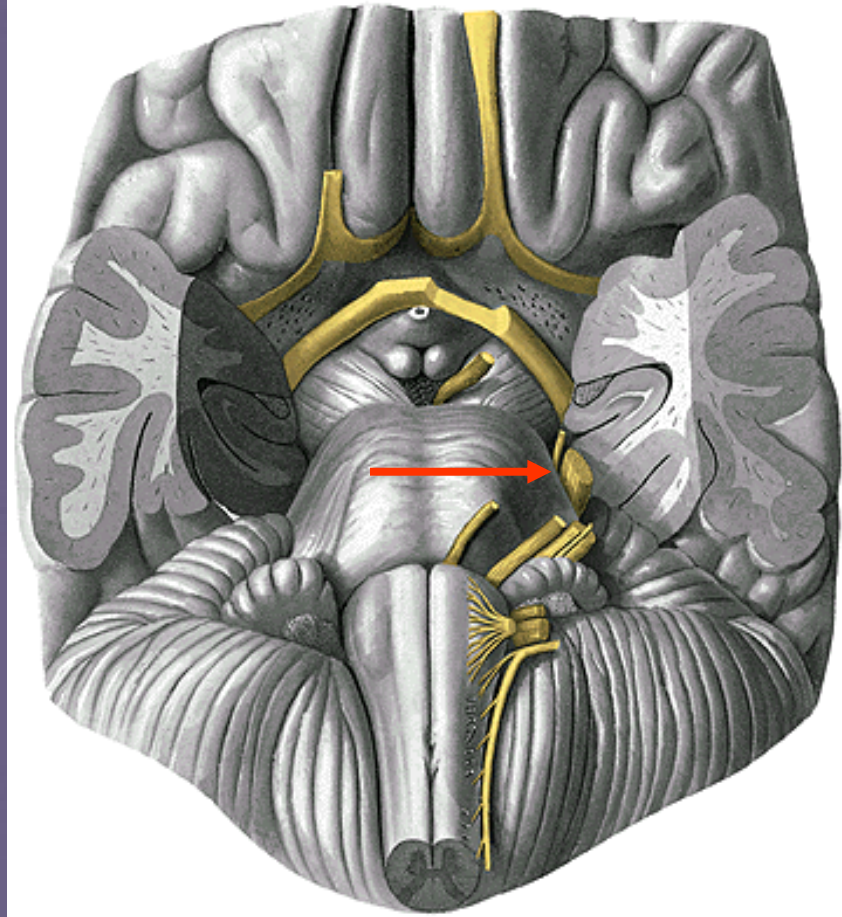
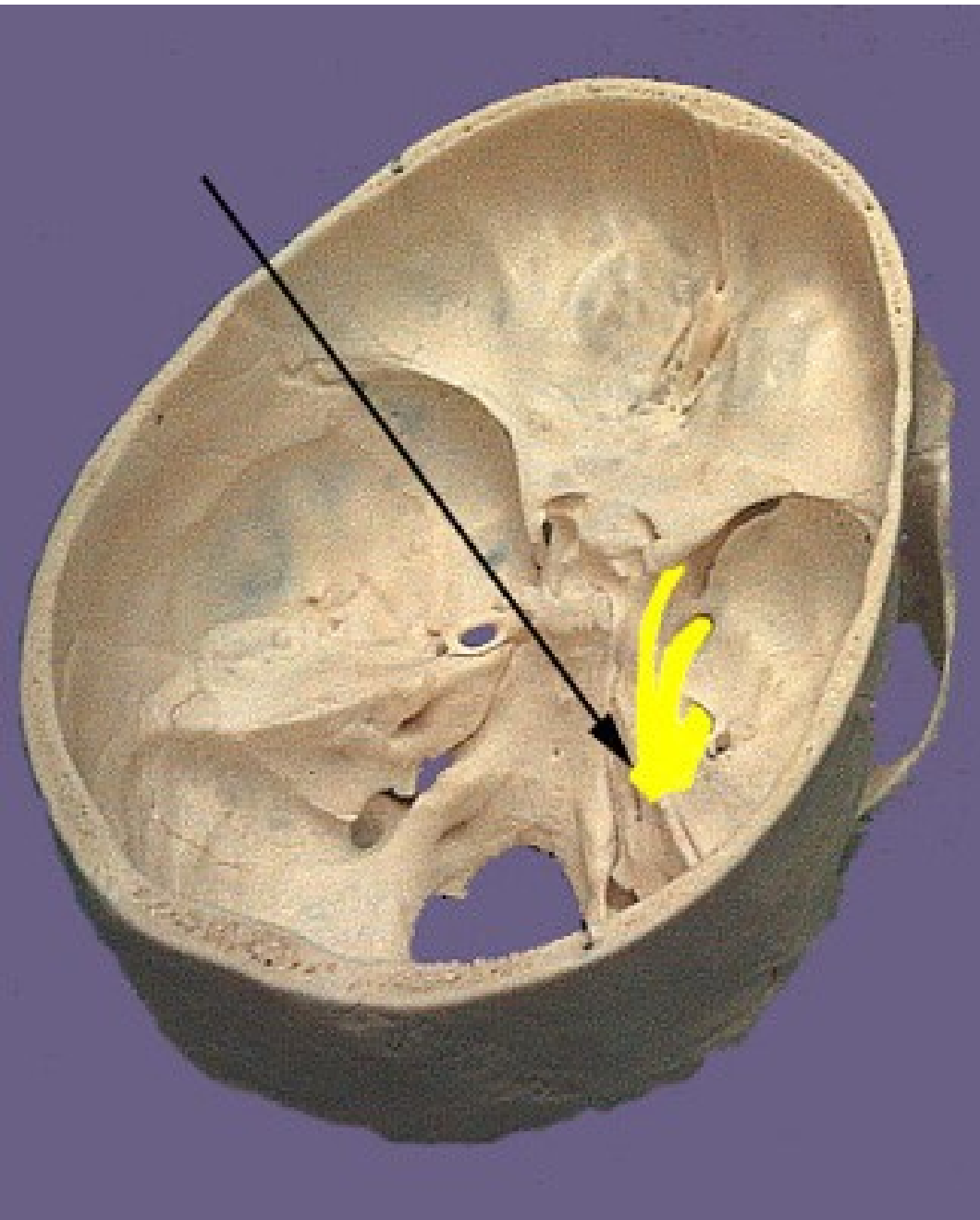
chuťové pohárky

1. ve sliznici měkkého a
tvrdého patra

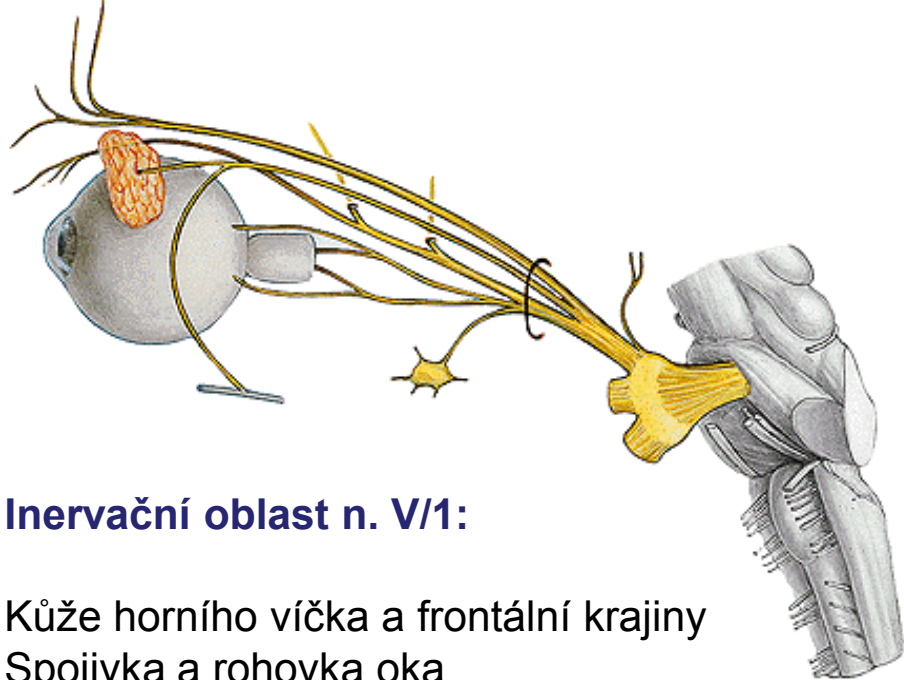
2. předních 2/3 jazyka



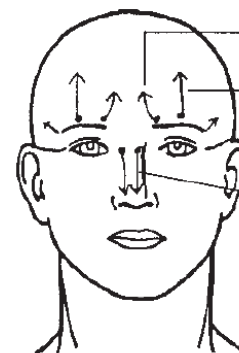
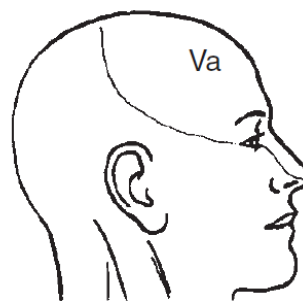




n.V.



Cutaneous distribution

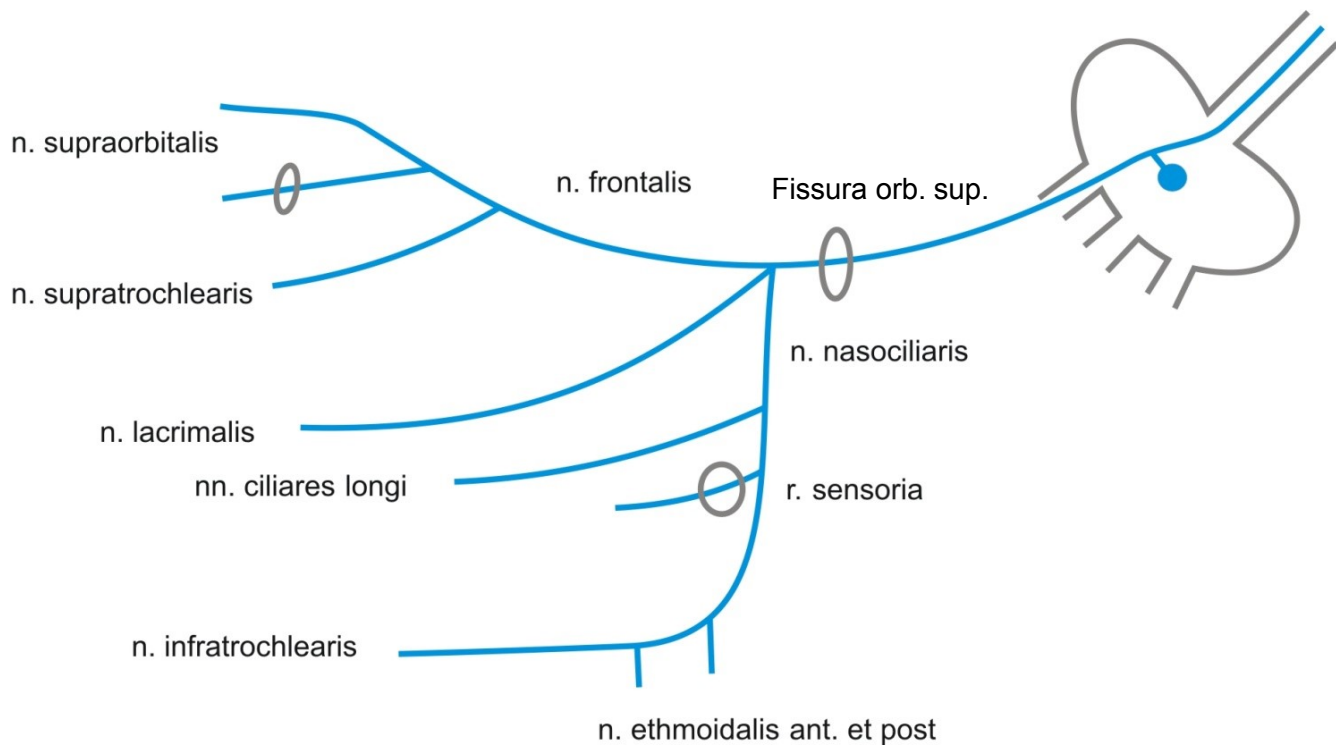


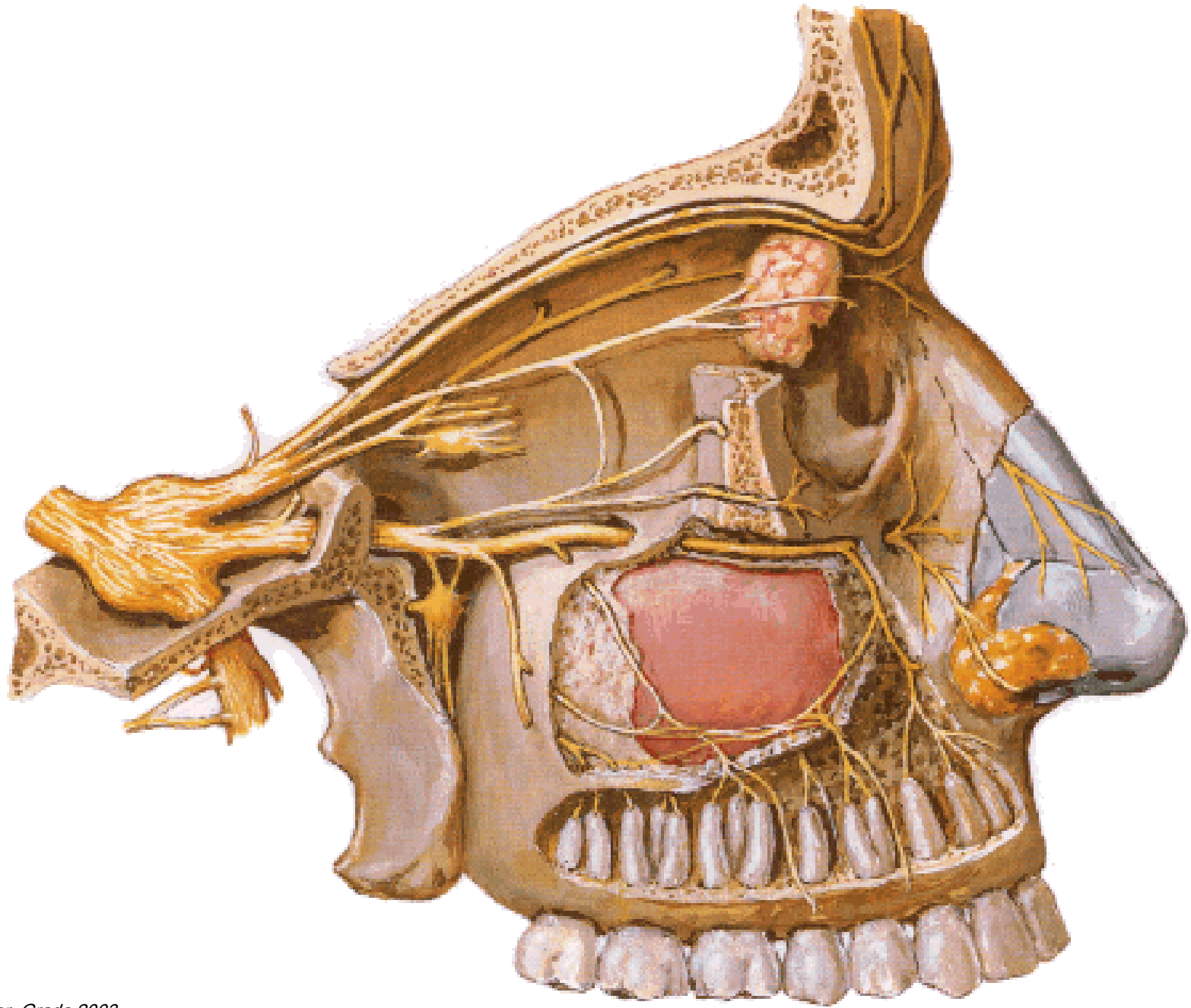
Sinus (broken circle)
 Supratrochlear
 (from frontal)
 Supraorbital
 (from frontal)
 External nasal
 (from nasociliary)

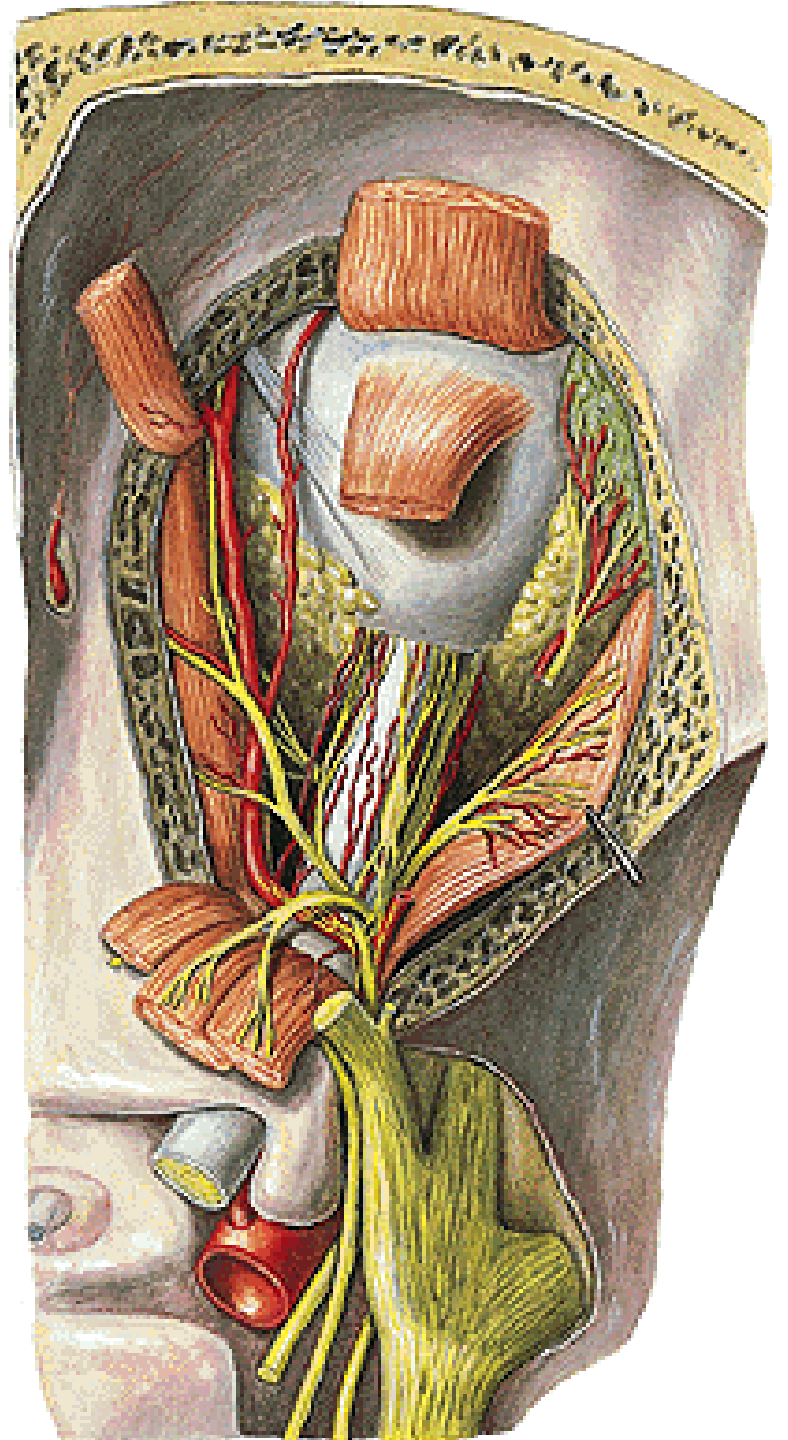
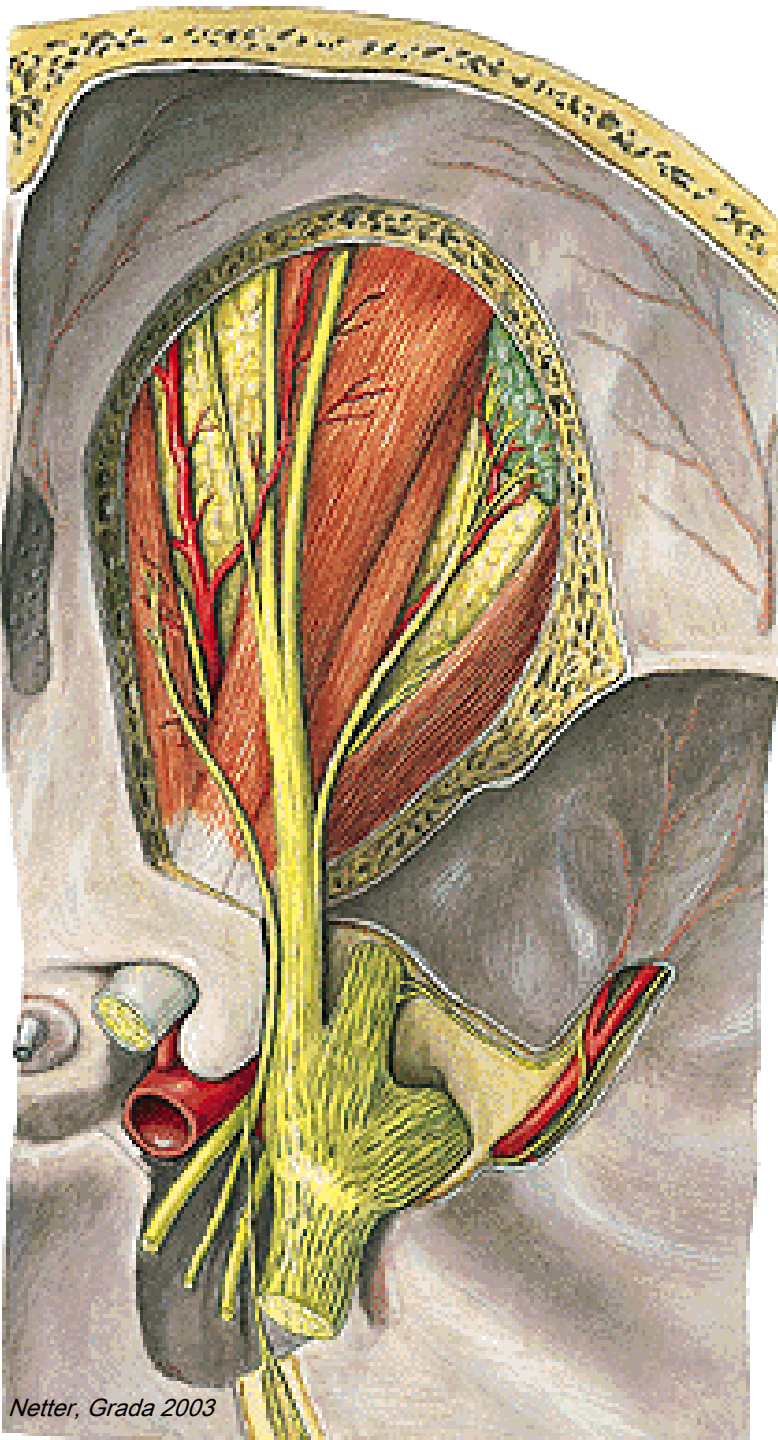
n. V/1 - n. ophthalmicus

Inervační oblast n. V/1:

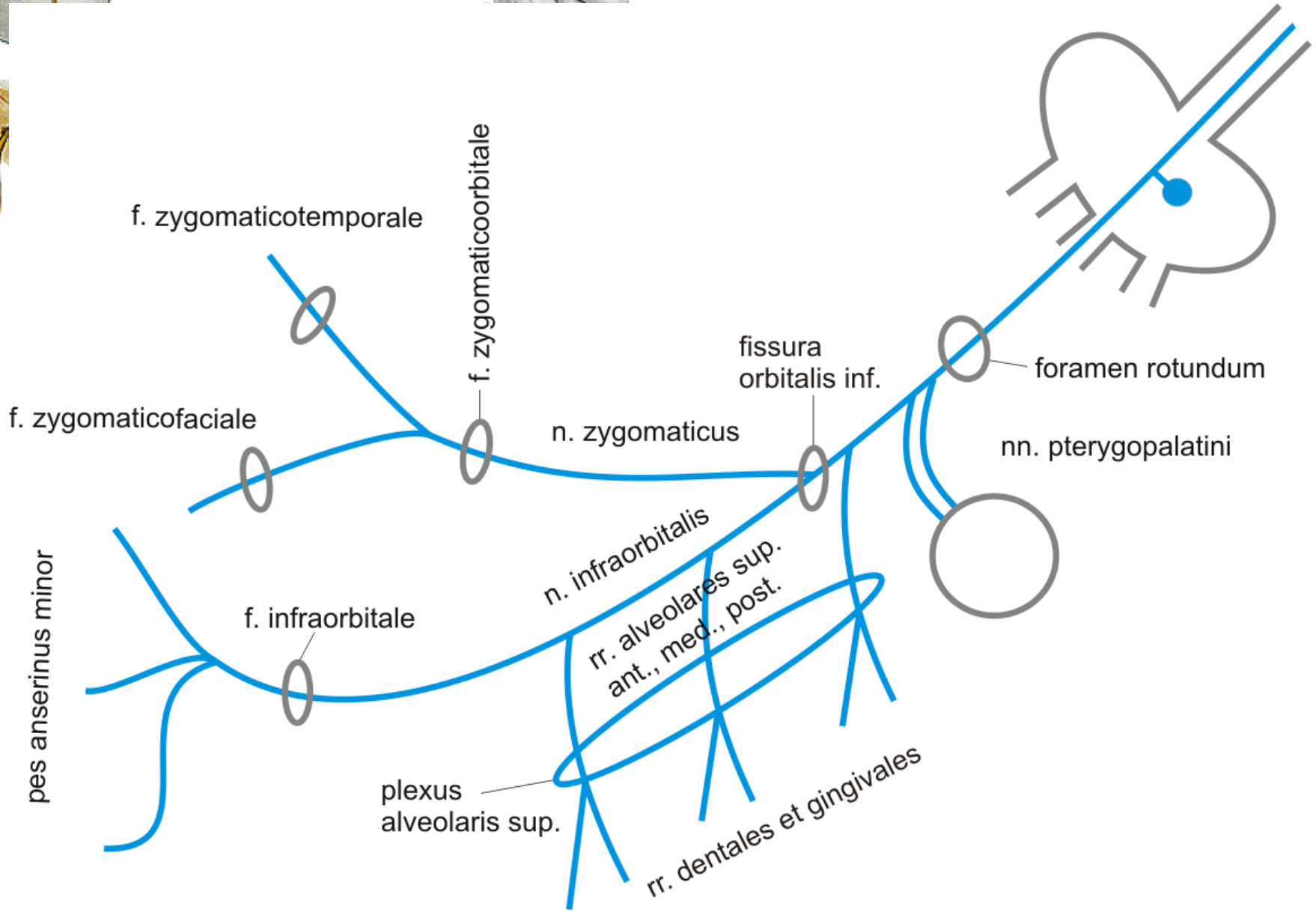
Kůže horního víčka a frontální krajiny
 Spojivka a rohovka oka
 Sliznice celulae ethmoidales

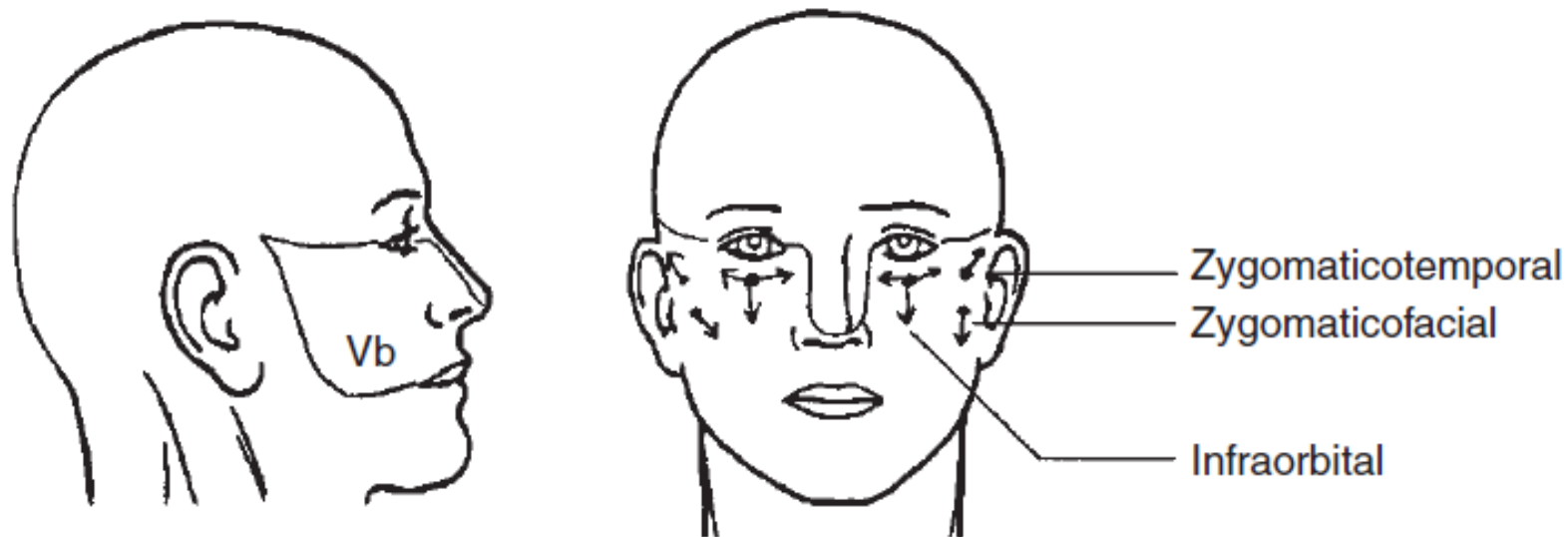






n. V/2 - n. maxillaris

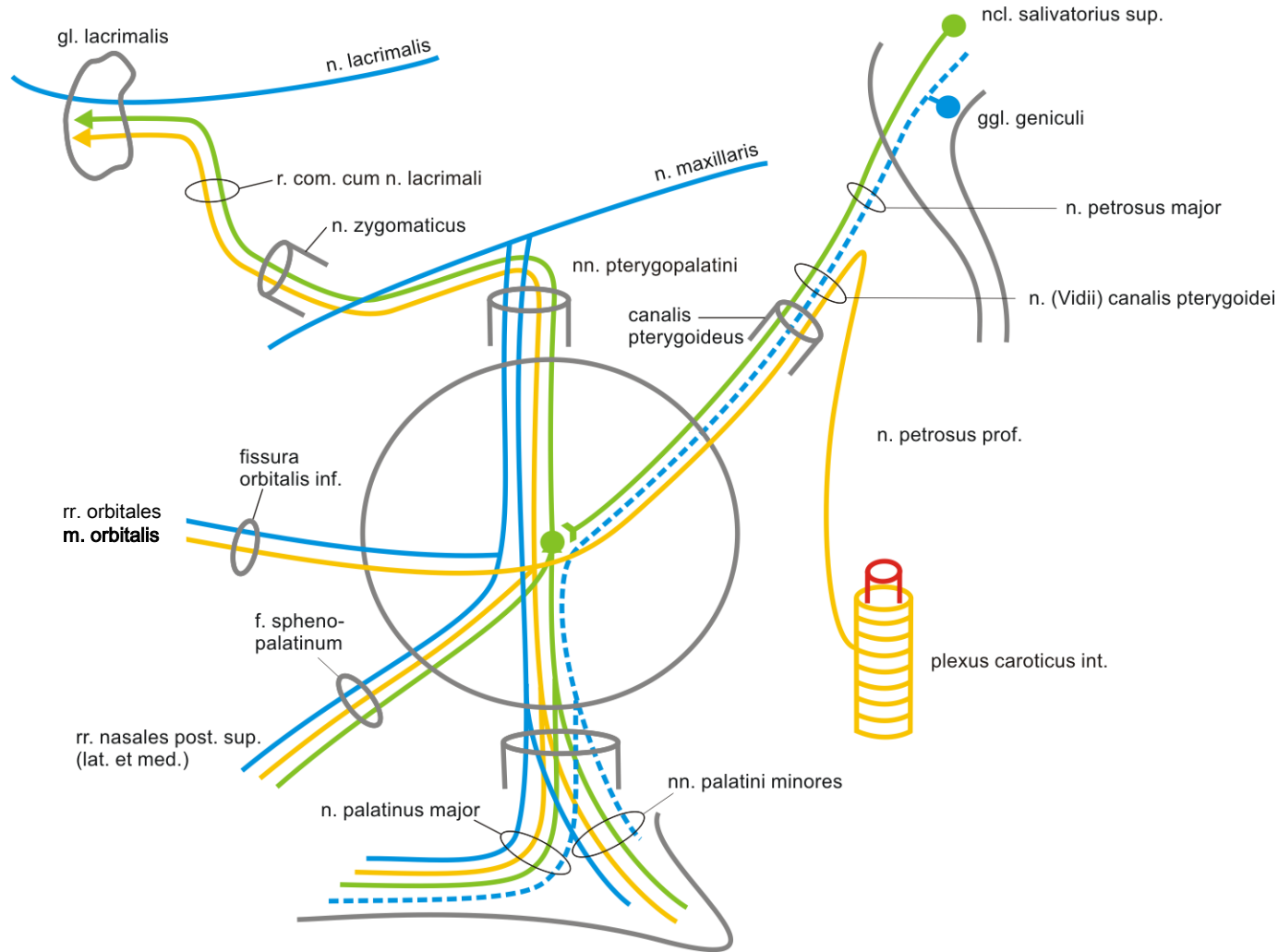




Somatosenzorická inervace n. V/2:

Kůže dolního víčka, křídel nosu, tváře,
gingiva a zuby horní čelisti

ggl. pterygopalatinum

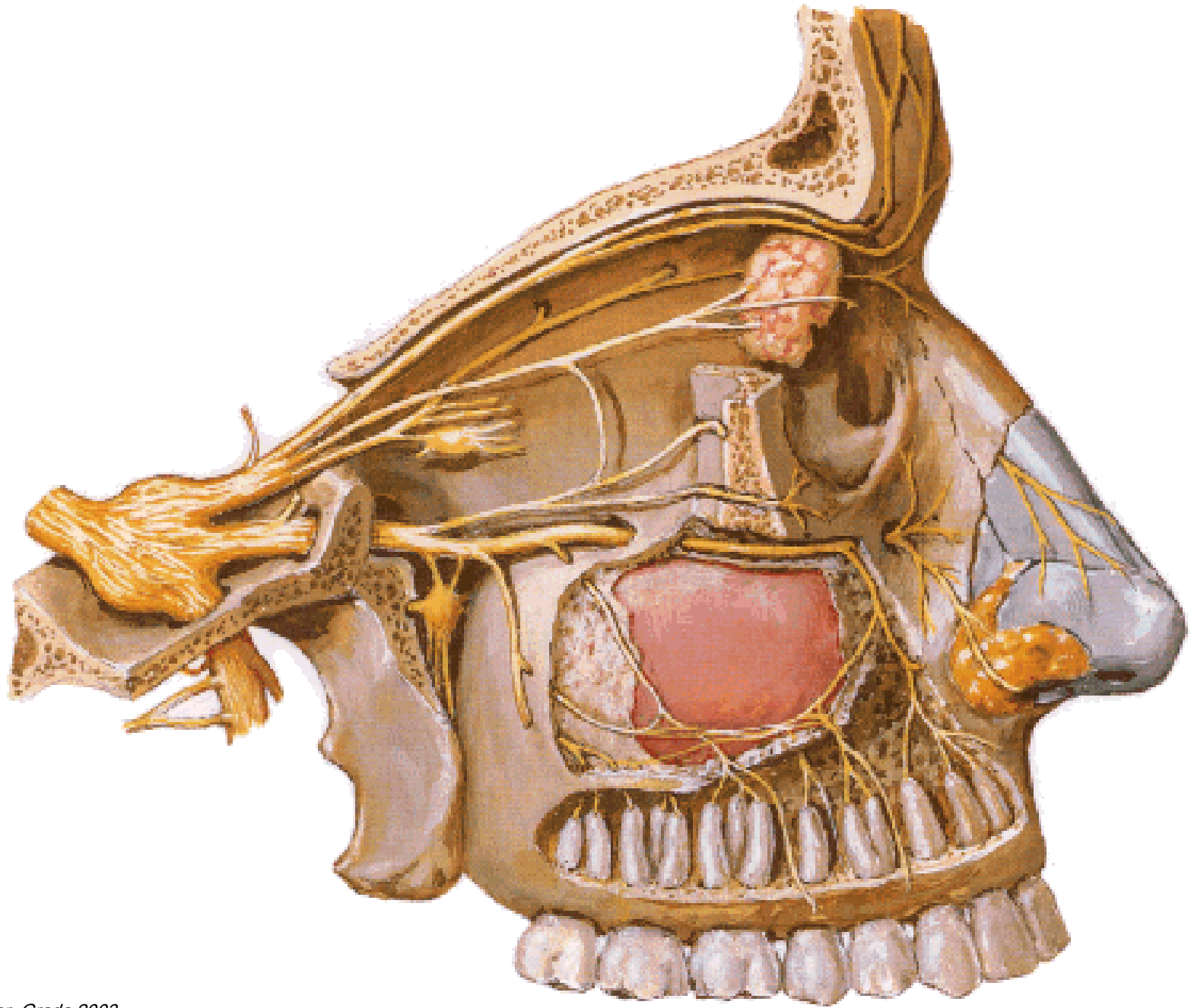


Inervační oblasti:

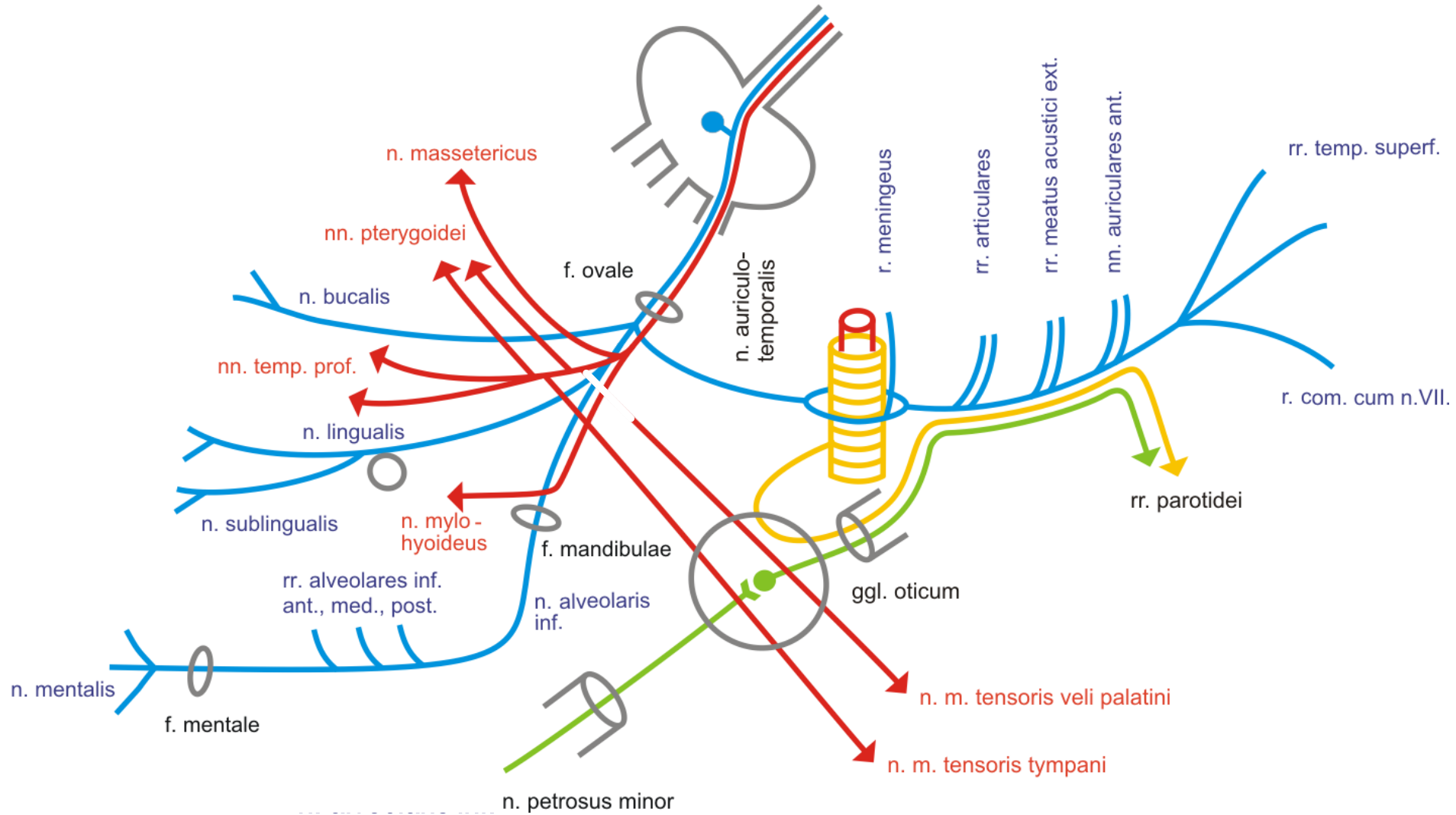
gl. lacrimalis
 m. orbitalis
 sliznice dutiny nosní
 sliznice měkkého a
 tvrdého patra

Typy nervových vláken

- senzorická
- somatosenzorická
- sympatická
- parasympatická

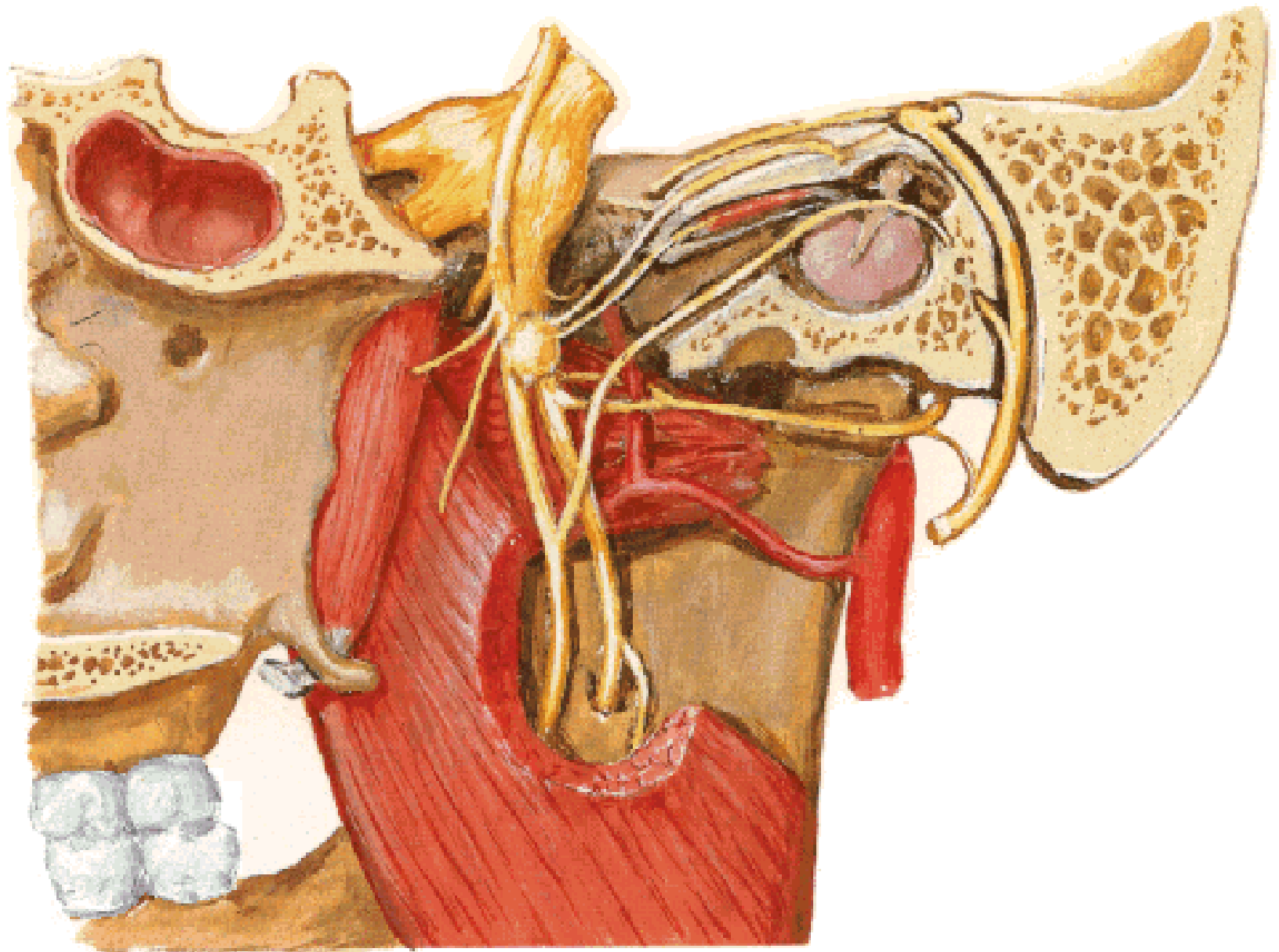


n. V/3 - n. mandibularis

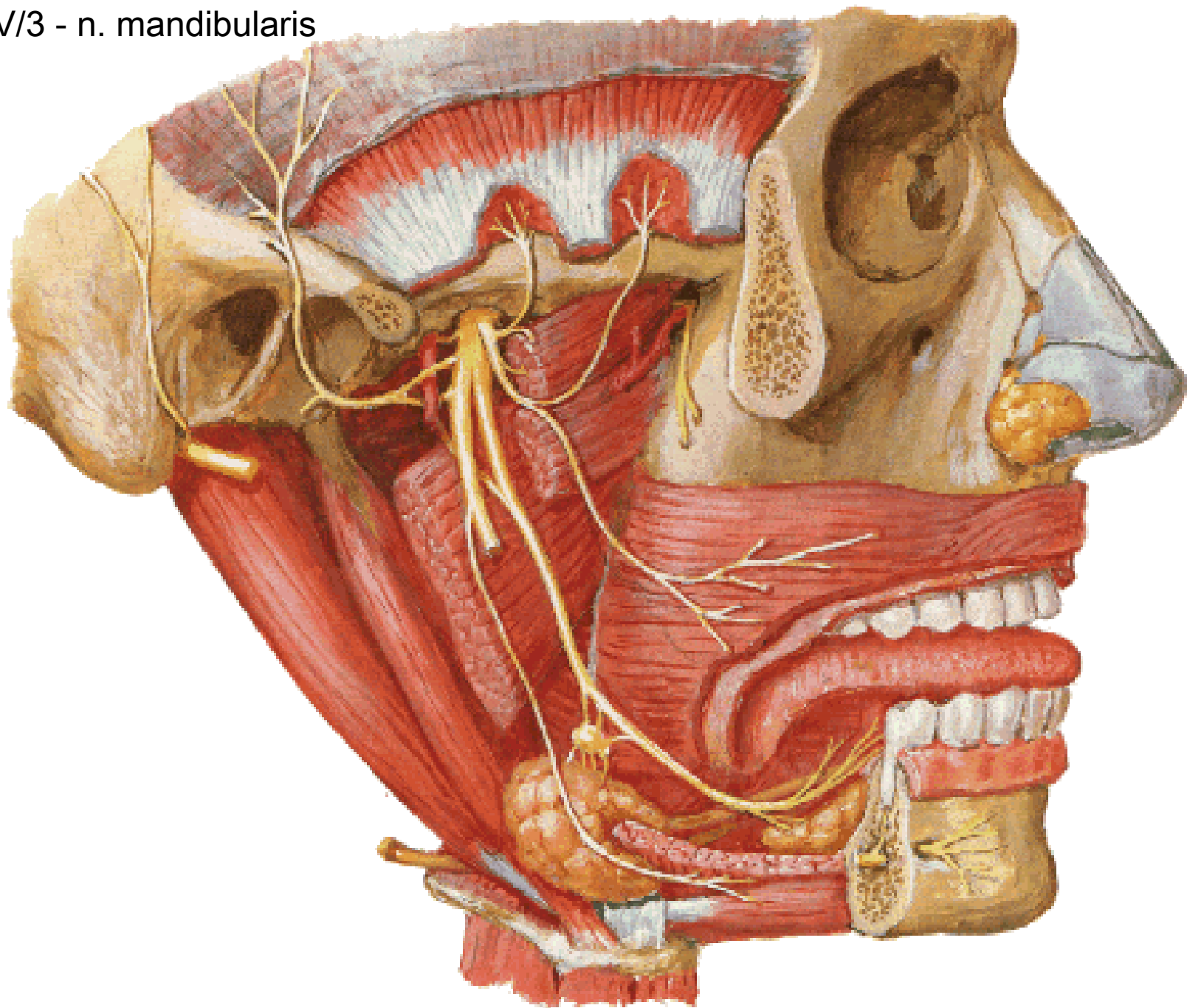


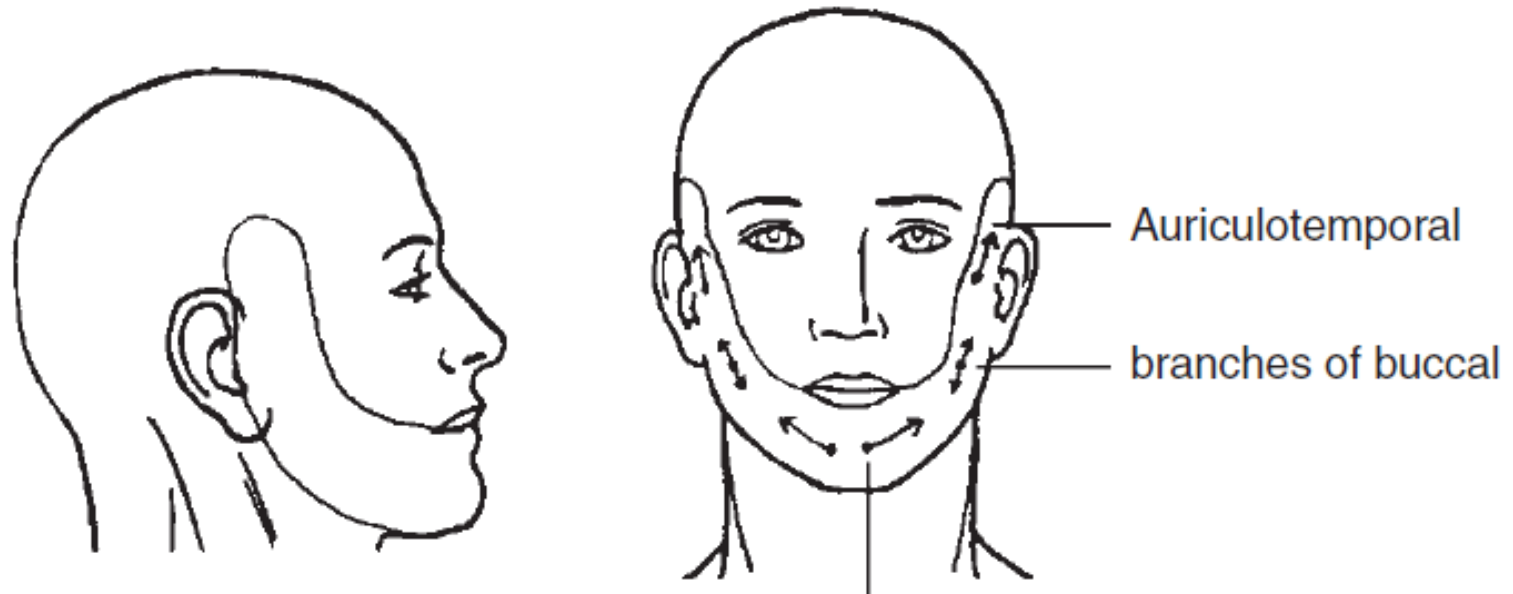
n. tympanicus – n. petrosus minor – ggl. oticum = *Jacobsonova anastomóza*

n. V/3 - n. mandibularis



n. V/3 - n. mandibularis





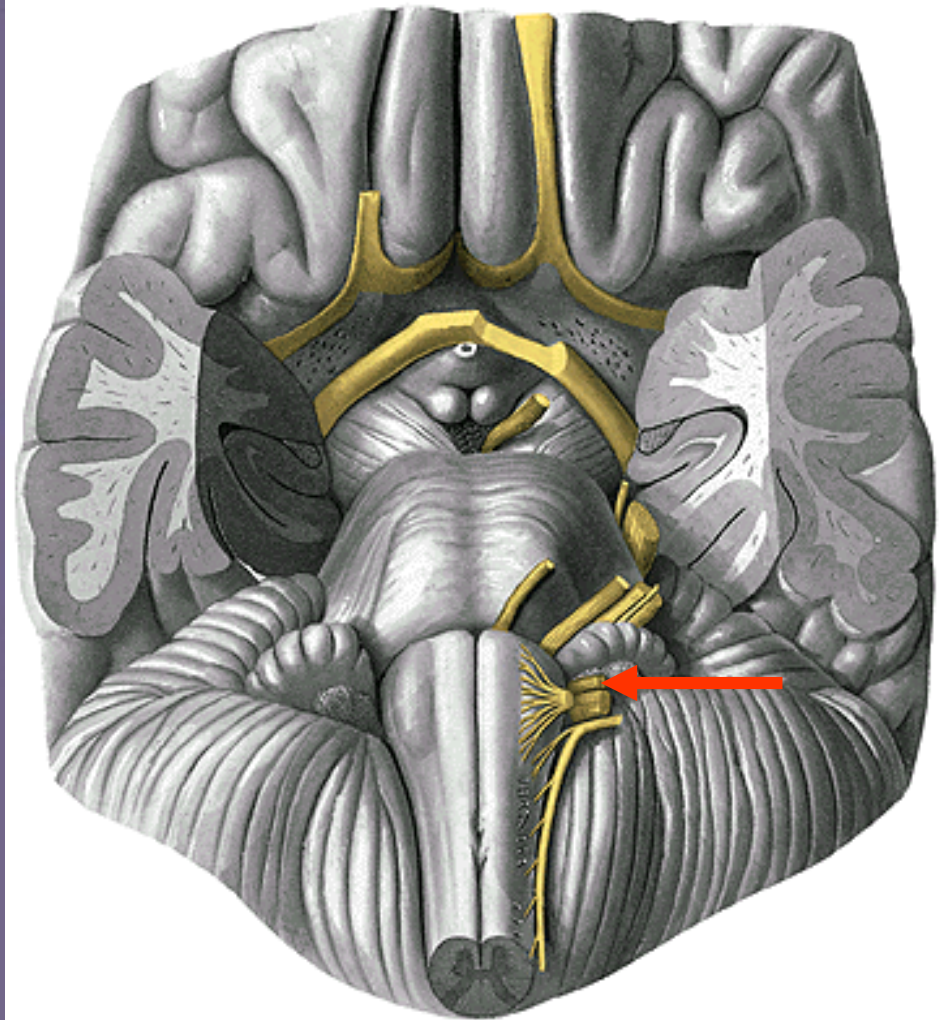
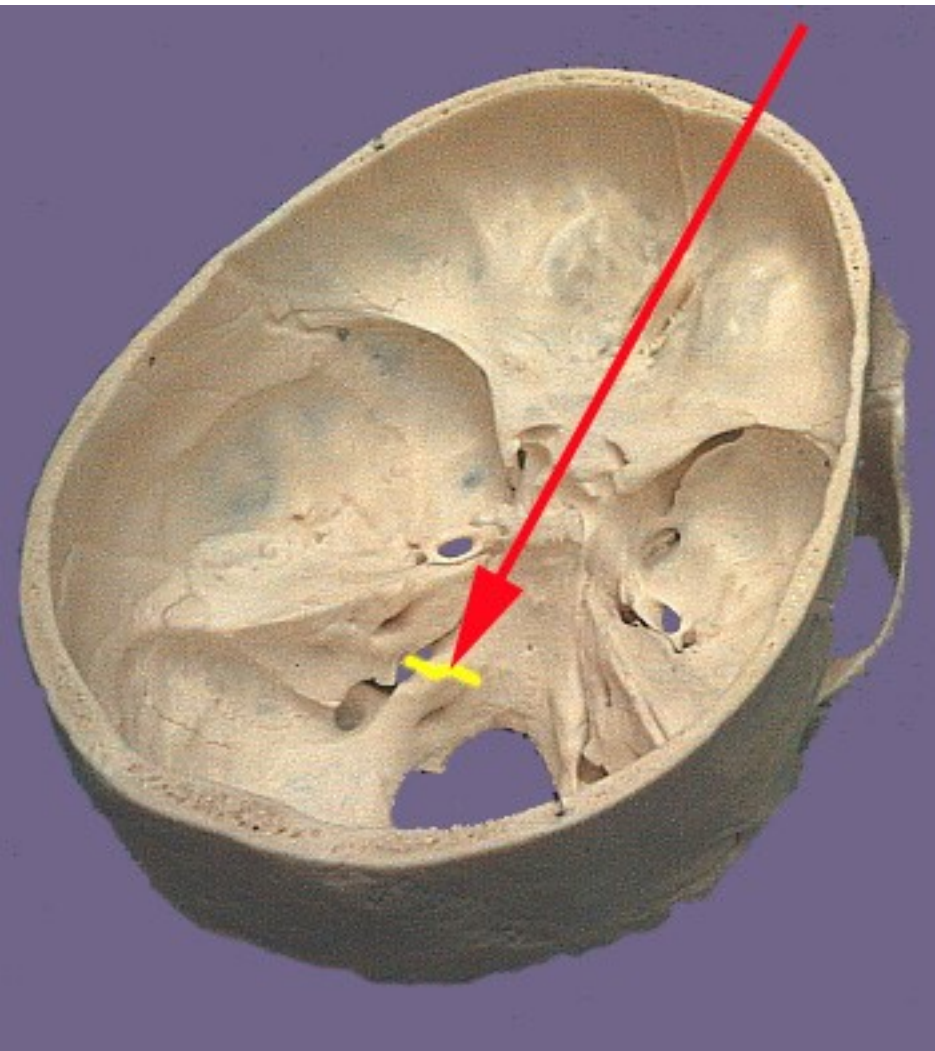
Mental, continuation of inferior alveolar

Somatosenzorická inervace n. V/3:

Kůže dolní čelisti a před ušním boltcem
Gingiva a zuby dolní čelisti

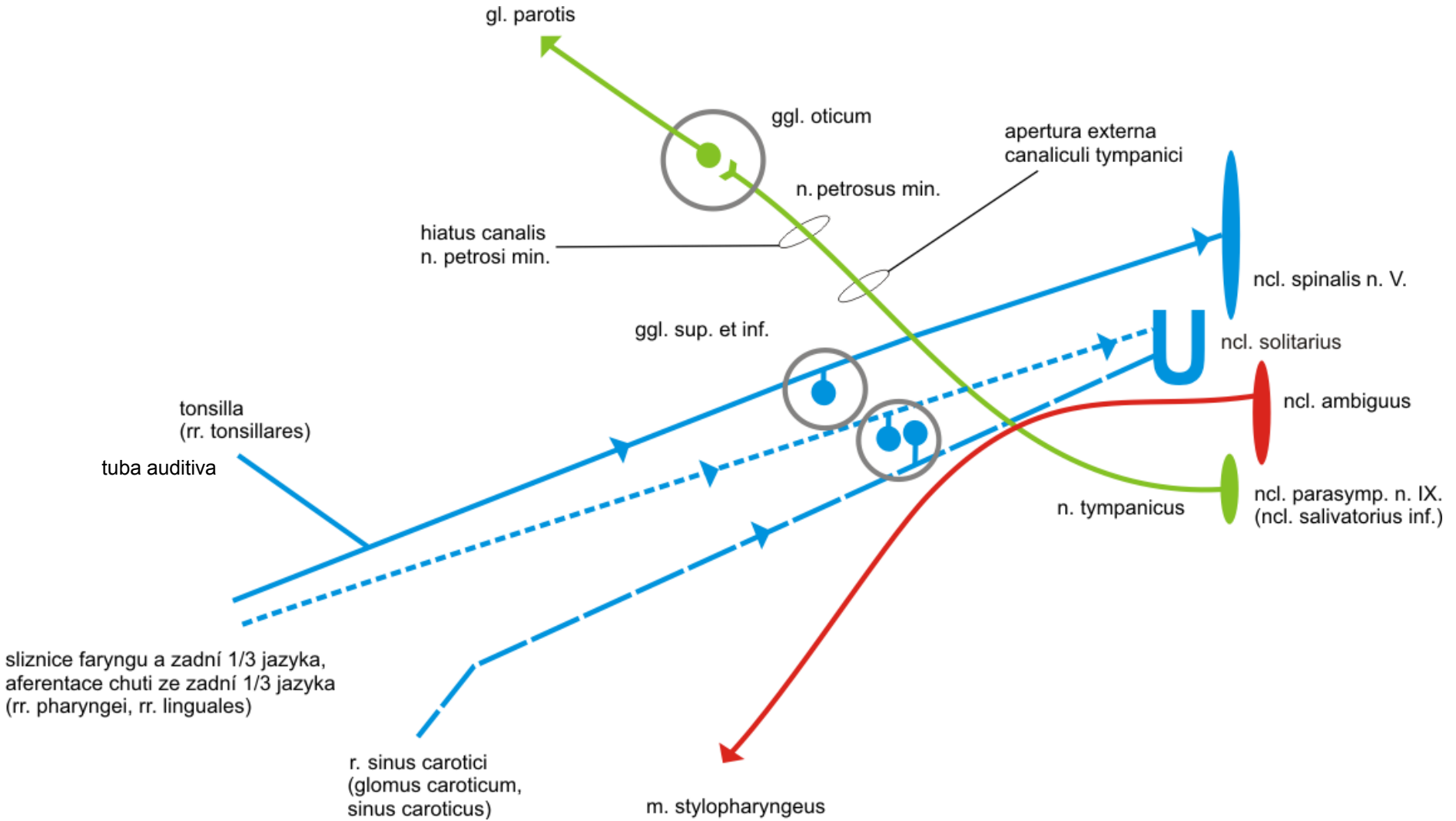
Motorická inervace n. V/3

žvýkácí svaly, m. mylohyoides, venter anterior m. digastrici



n. IX.

n. IX.



Inervační oblasti n. IX:

Somatosenzoricky

Sliznice faryngu

Tonsilla palatina, tuba auditiva

Sliznice zadní třetiny jazyka

Senzoricky (chuť)

Chuťové pohárky

zadní třetiny jazyka

Viscerosenzoricky

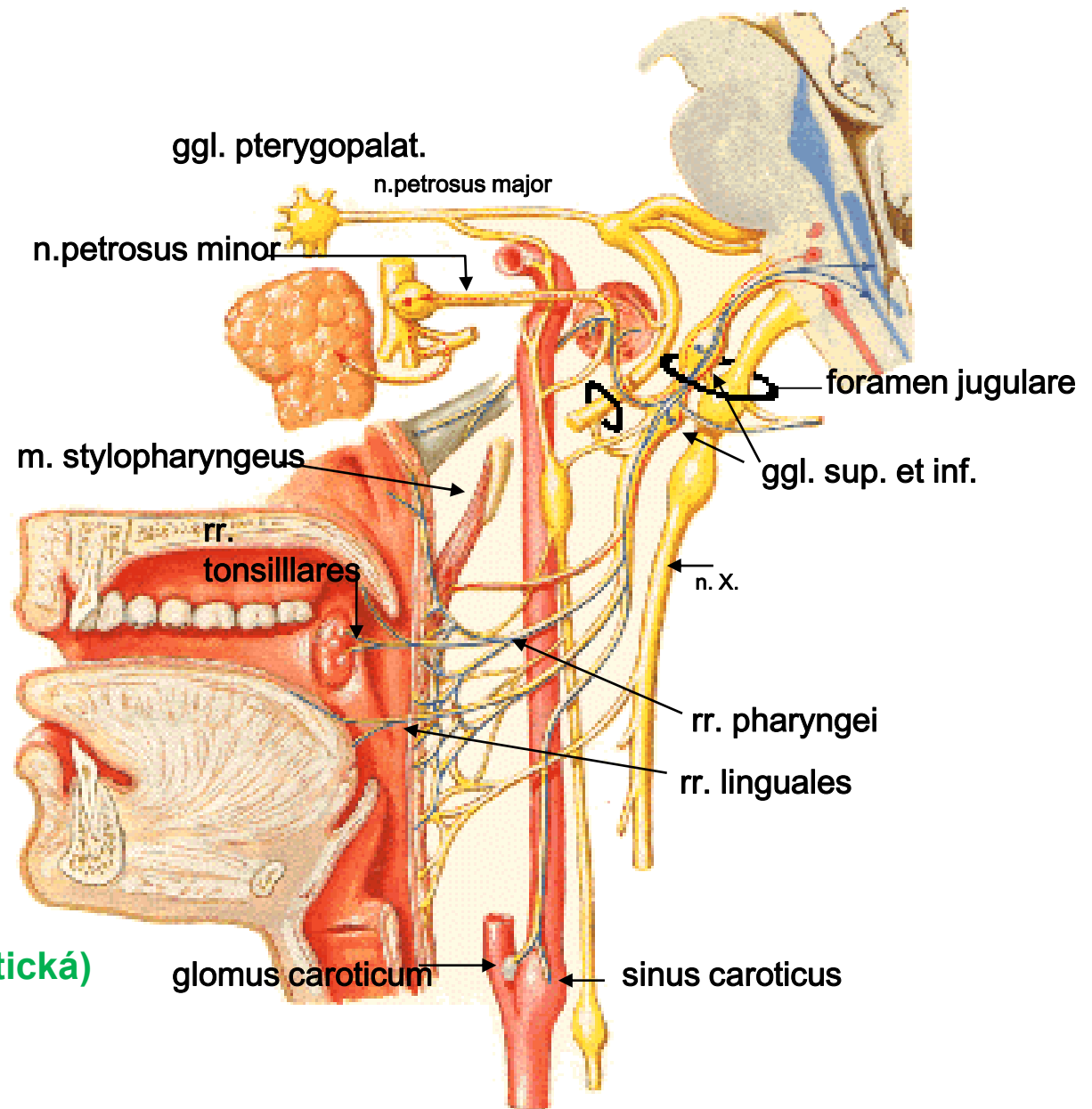
Glomus caroticum

Sinus caroticus

Motoricky

m. stylopharyngeus

Visceromotorická (parasymptická) **gl. parotis**



Inervační oblasti n. IX:

Somatosenzoricky

- Sliznice faryngu
- Tonsilla palatina, tuba auditiva
- Sliznice zadní třetiny jazyka

Senzoricky (chuť)

- Chuťové pohárky
- zadní třetiny jazyka

Viscerosenzoricky

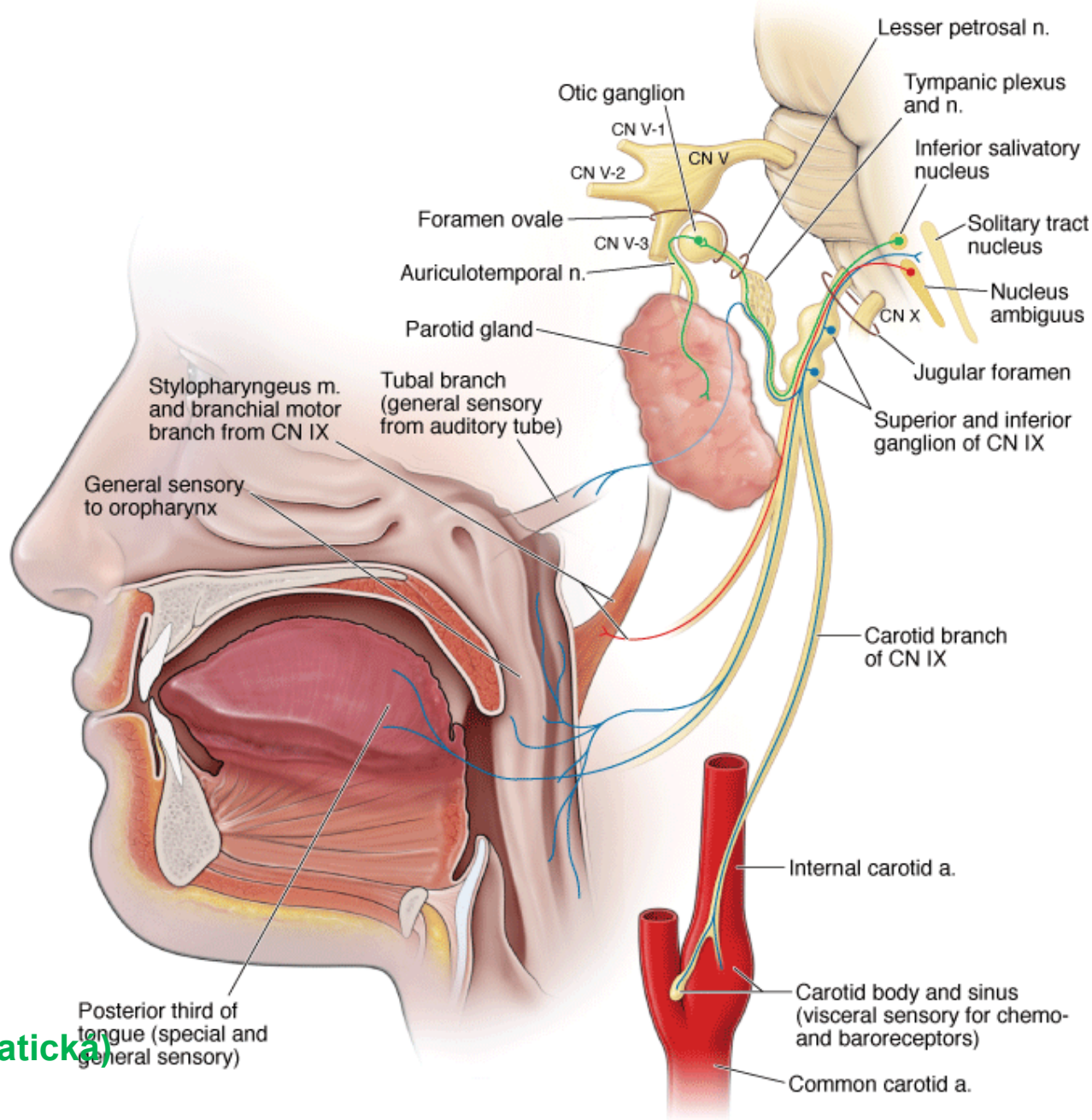
- Glomus caroticum
- Sinus caroticus

Motoricky (Branchiomotor.)

m. stylopharyngeus

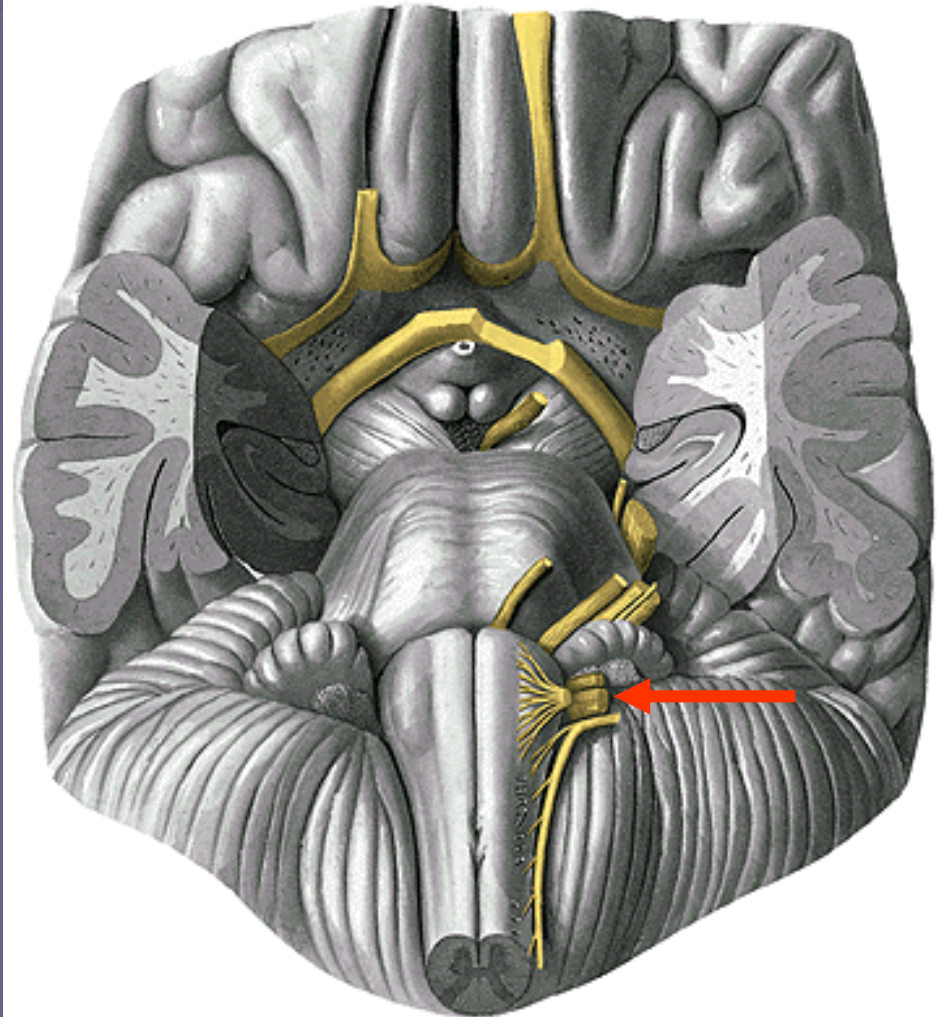
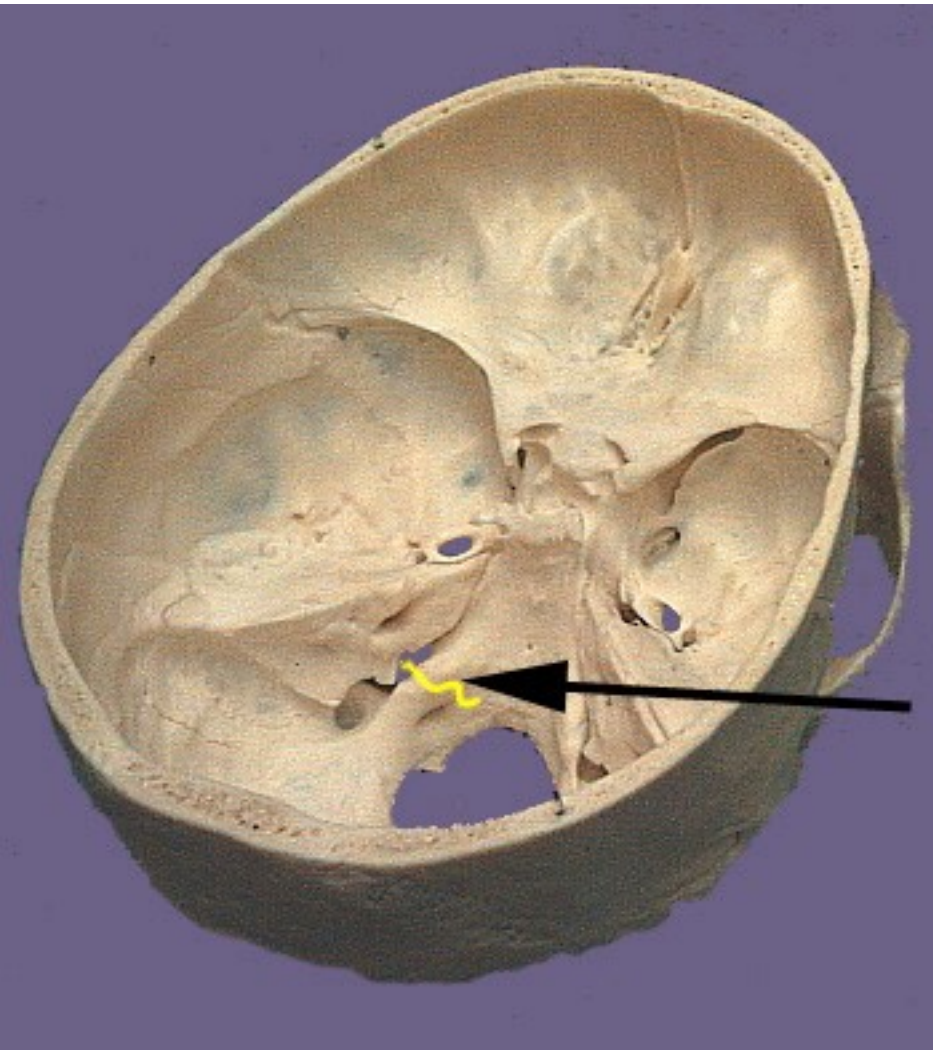
Visceromotorická (parasymptická)

gl. parotis

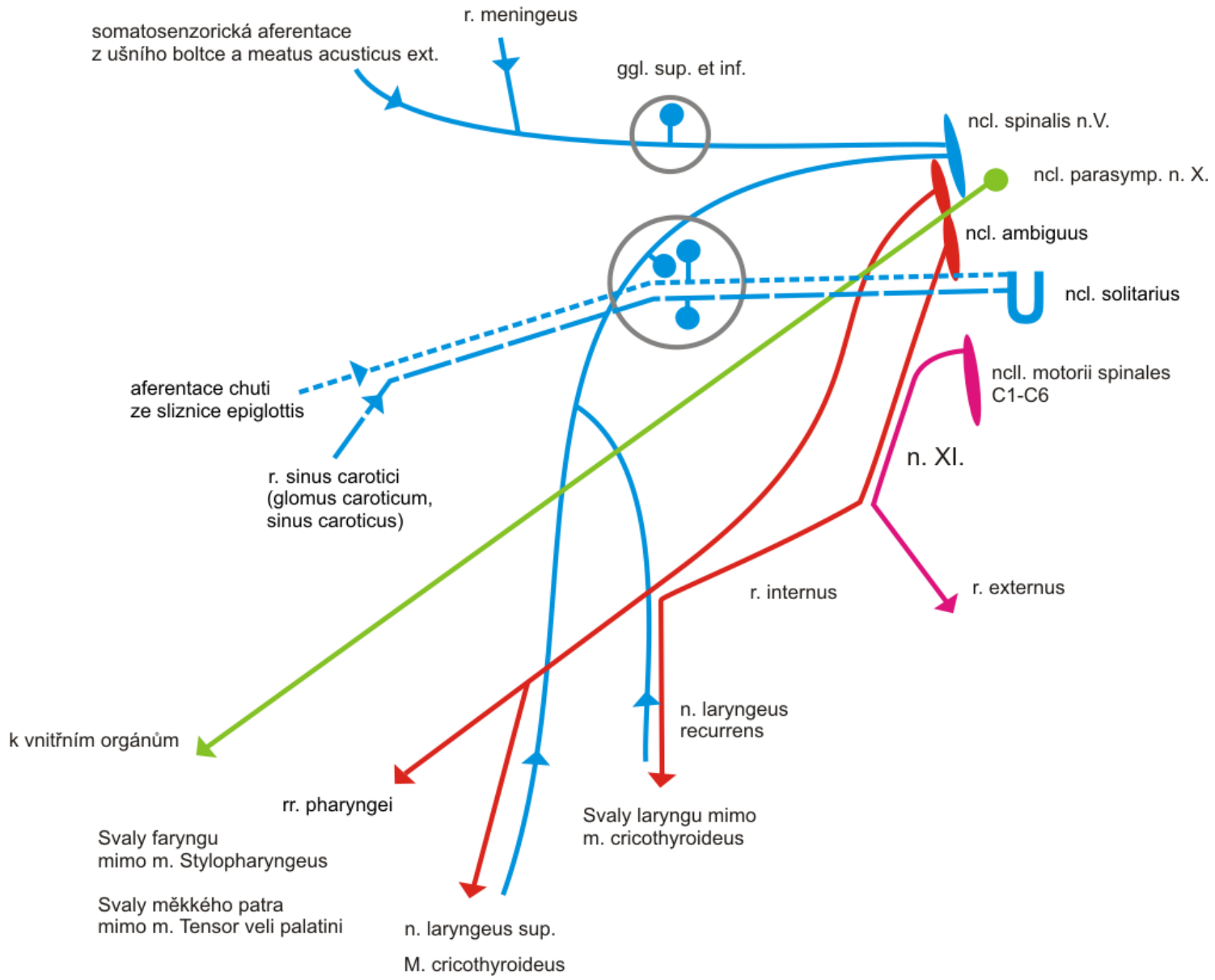


Source: Morton DA, Foreman KB, Albertine KH: *The Big Picture: Gross Anatomy*: www.accessmedicine.com
Copyright © The McGraw-Hill Companies, Inc. All rights reserved.

n. X.



n. X.



Inervační oblasti n. X:

Somatosensorická

Ušní boltec a meatus acusticus ext.
Meningy, sliznice laryngu

Sensorická (chut')

Chuťové pohárky epiglottis

Viscerosenzorická

Glomus caroticum
Sinus caroticus

Motoricky (Branchiomotor.)

Svaly faryngu mimo m. stylopharyngeus

Svaly měkkého patra mimo m. tensor veli palatini

Svaly laryngu

m. cricothyroideus – n. laryngeus sup., r. externus

Ostatní svaly laryngu – n. laryngeus recurrens (zdroj r. internus n. XI.)

Visceromotorická (parasymptická)

Vnitřní orgány

Větve n. vagus

Malé auto **faráře**, láme kamarádům **rekord**, kamarád **brojí esem**, gangsterskou cestou k **Heleně rezavé**.

r. **meningeus**

rr **auriculares**

rr. **pharyngei**

rr. **laryngei sup.**

rr. **cardiaci cervicales sup.**

n. laryngeus **reccurens**, n. lar. inf.

rr. **cardiaci cervicales inf.**

rr. **cardiaci thoracici**

rr. **bronchiales**

rr. **tracheales**,

rr. **oesophagei**, plexus oesophageus,

plexus pulmonalis

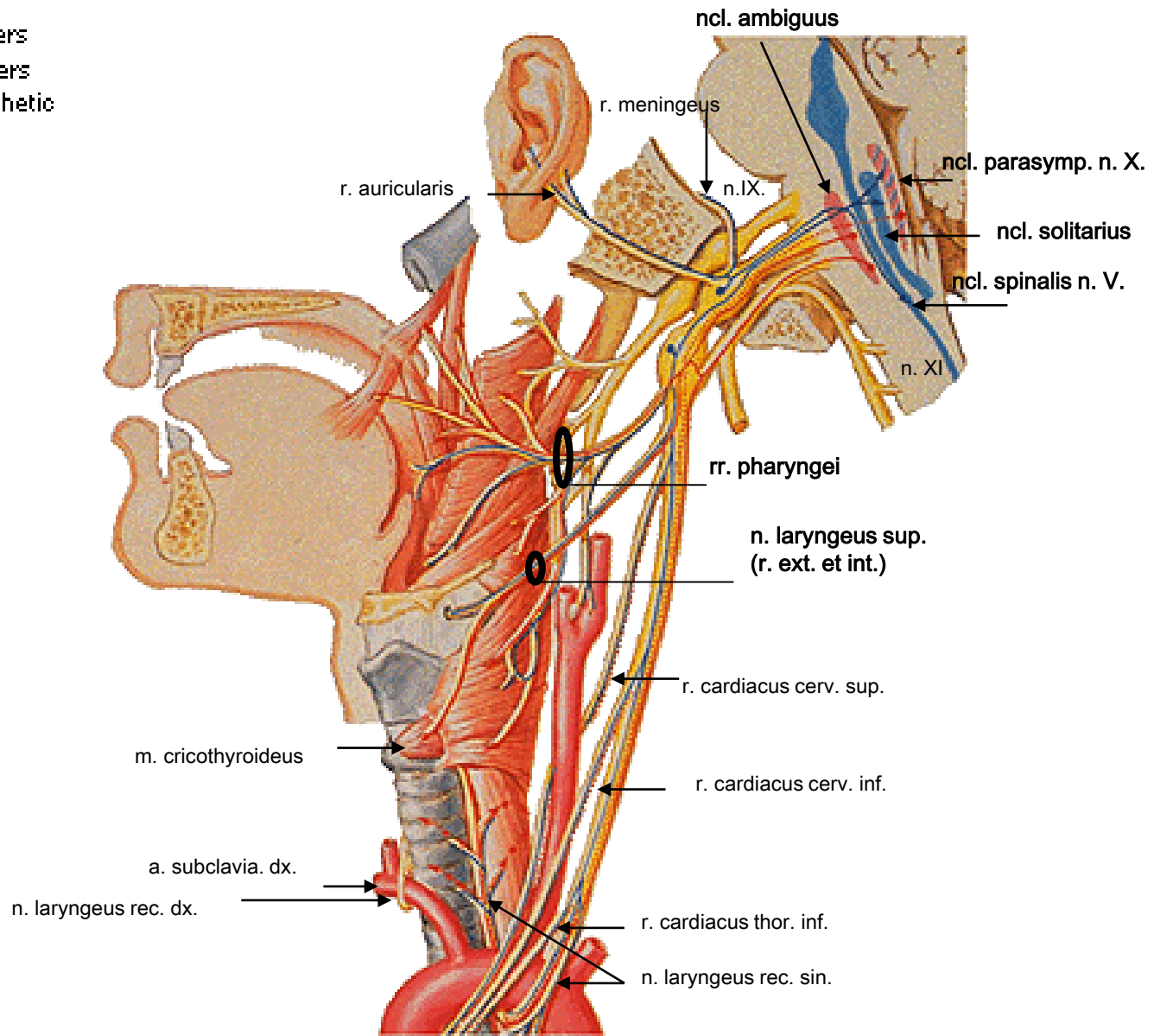
truncus vagalis ant., post. -----rr. **gastrici ant. post.**,

rr. **coeliaci**

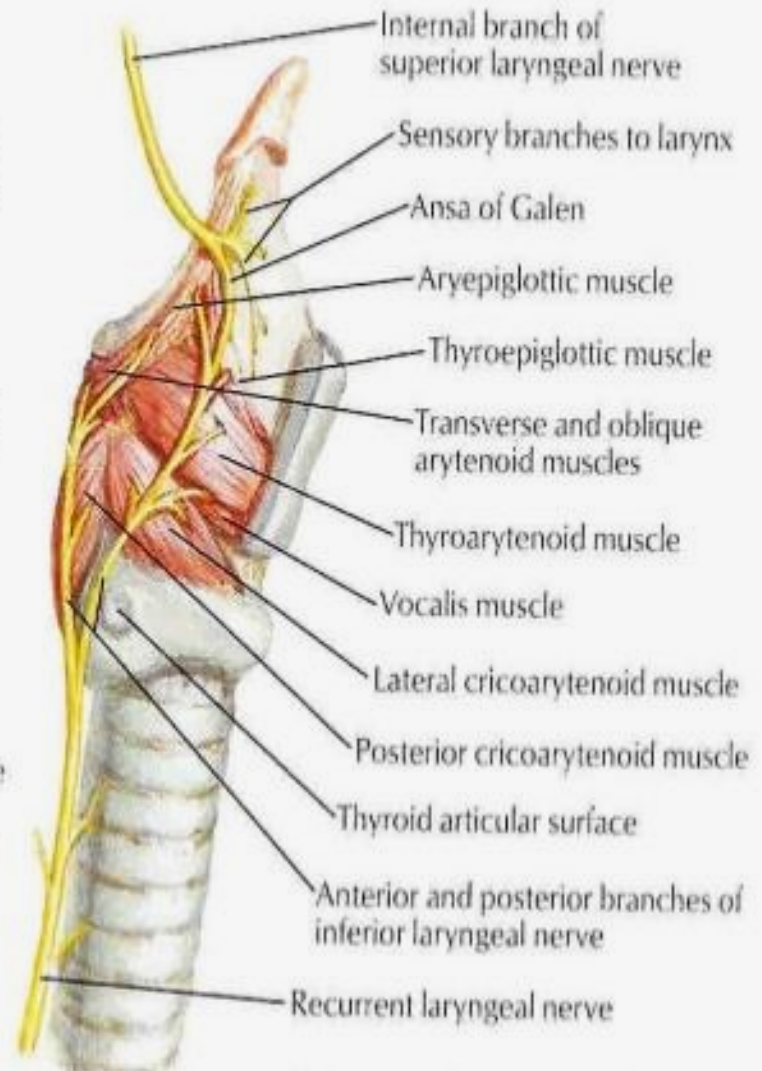
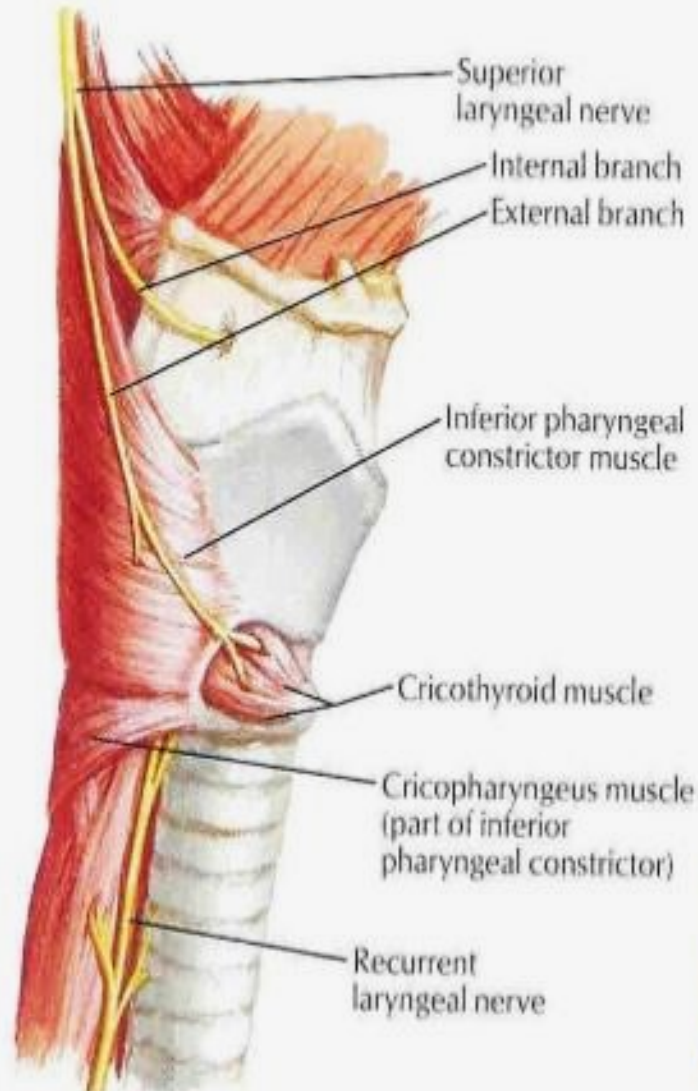
rr. **hepatici**

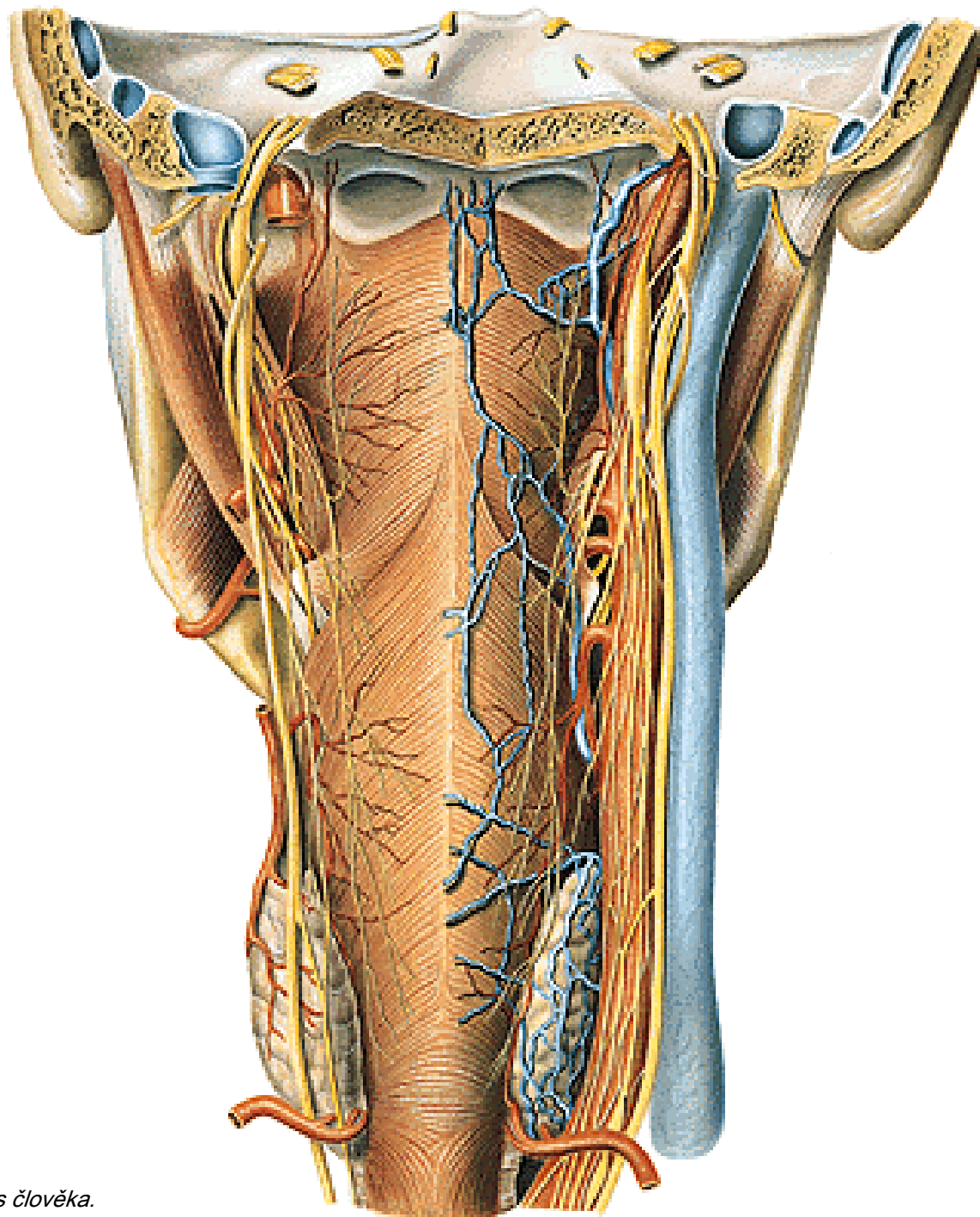
rr. **renales**

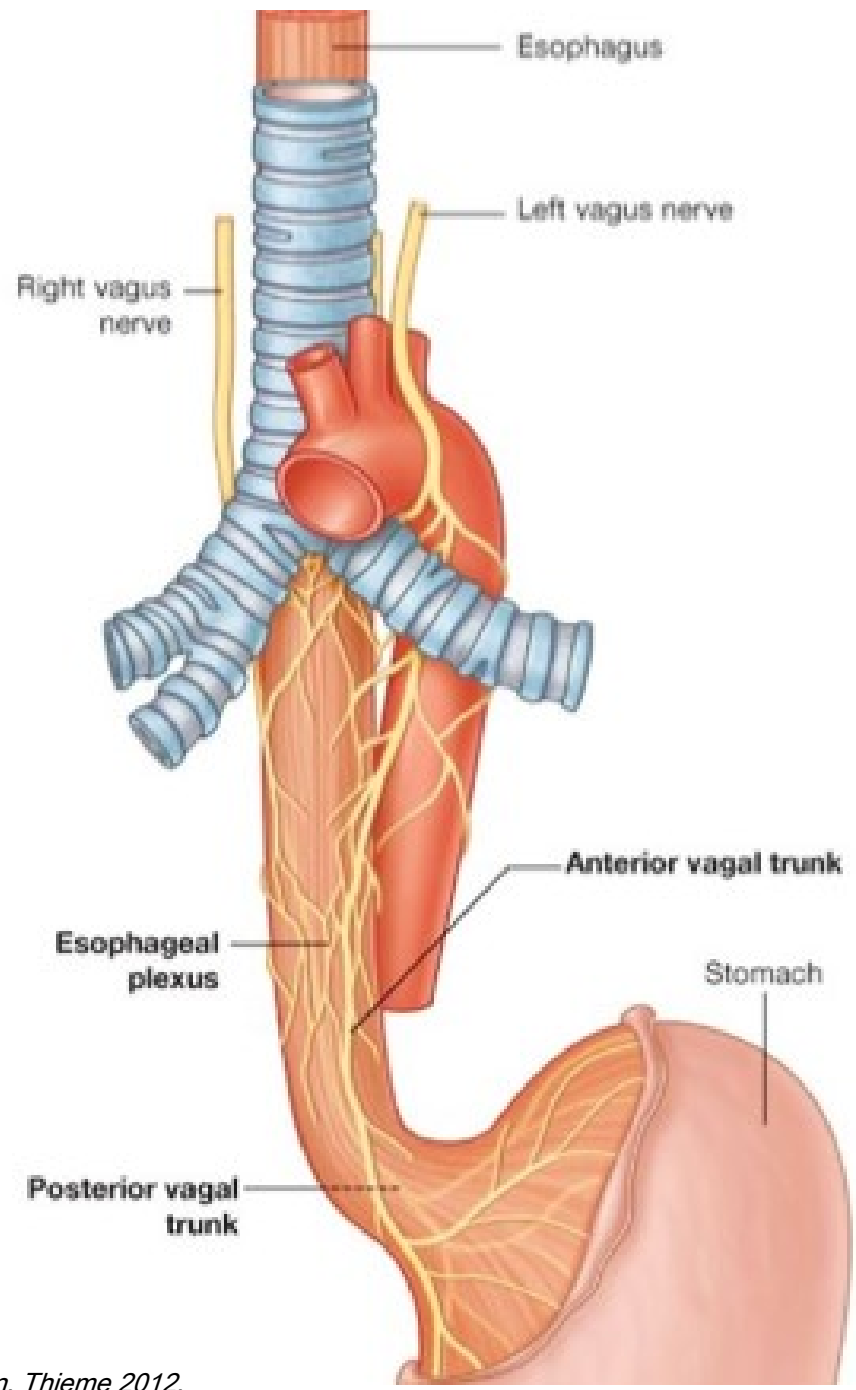
- Efferent fibers
- Afferent fibers
- - - Parasympathetic fibers

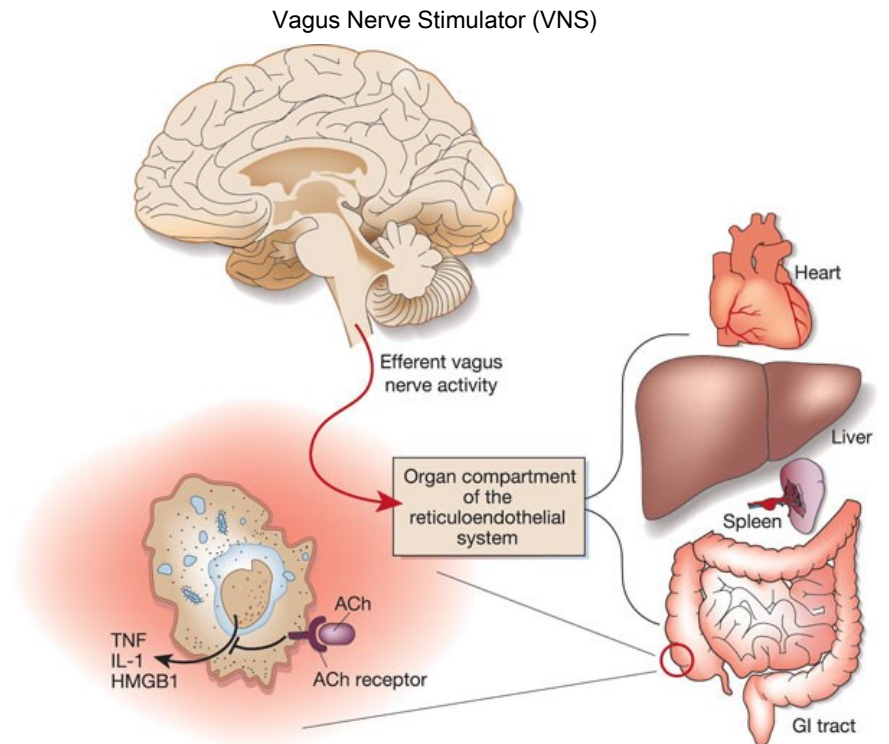
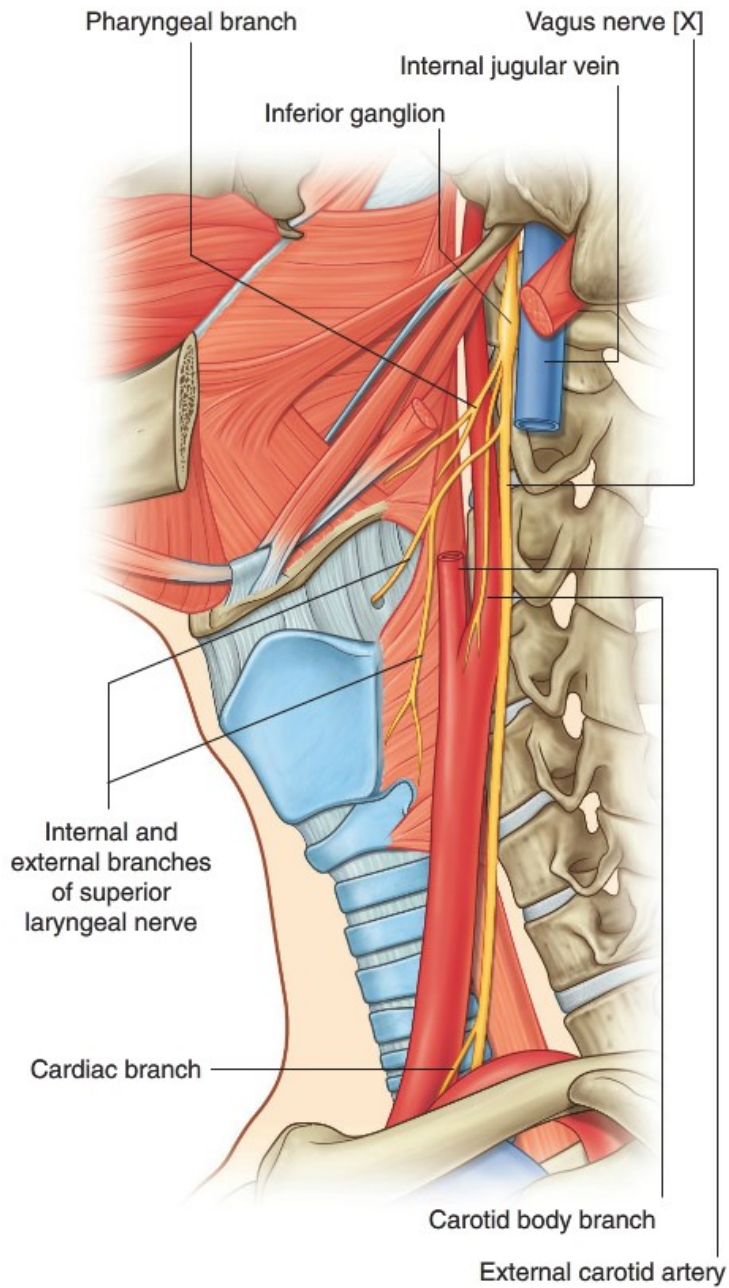


NERVE SUPPLY OF LARYNX

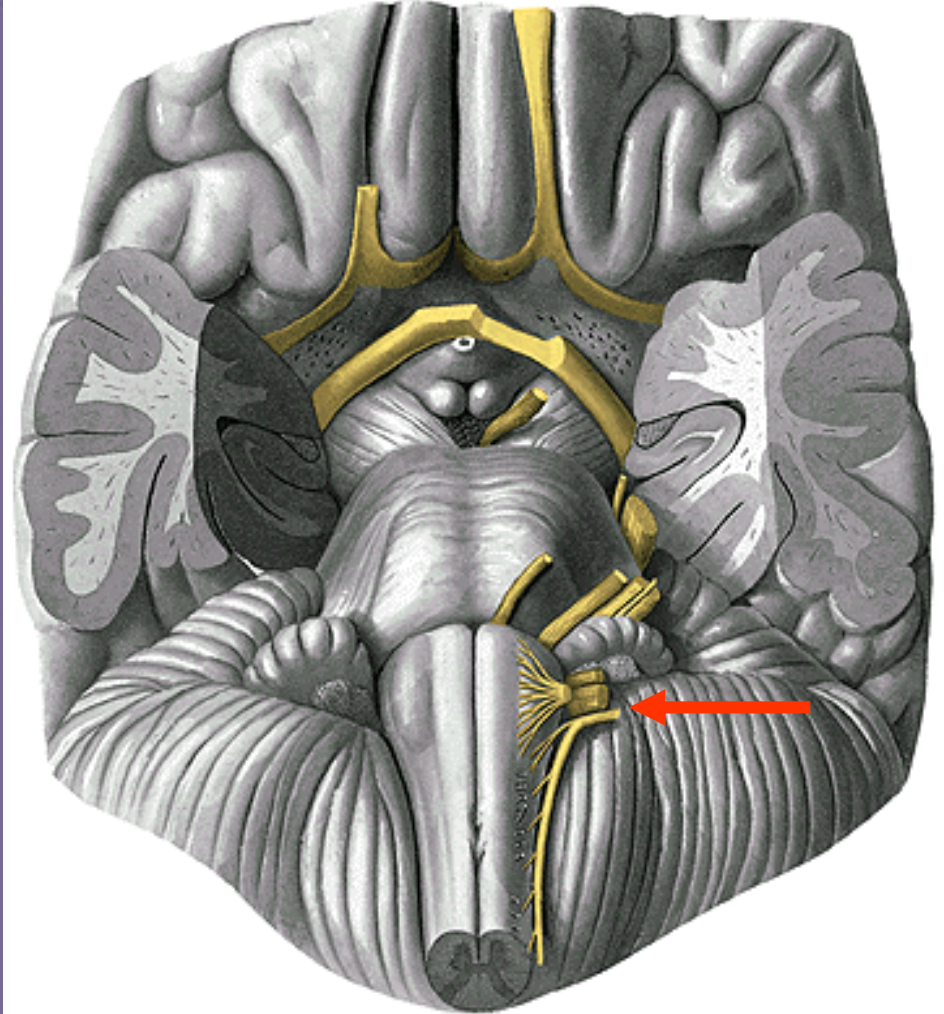
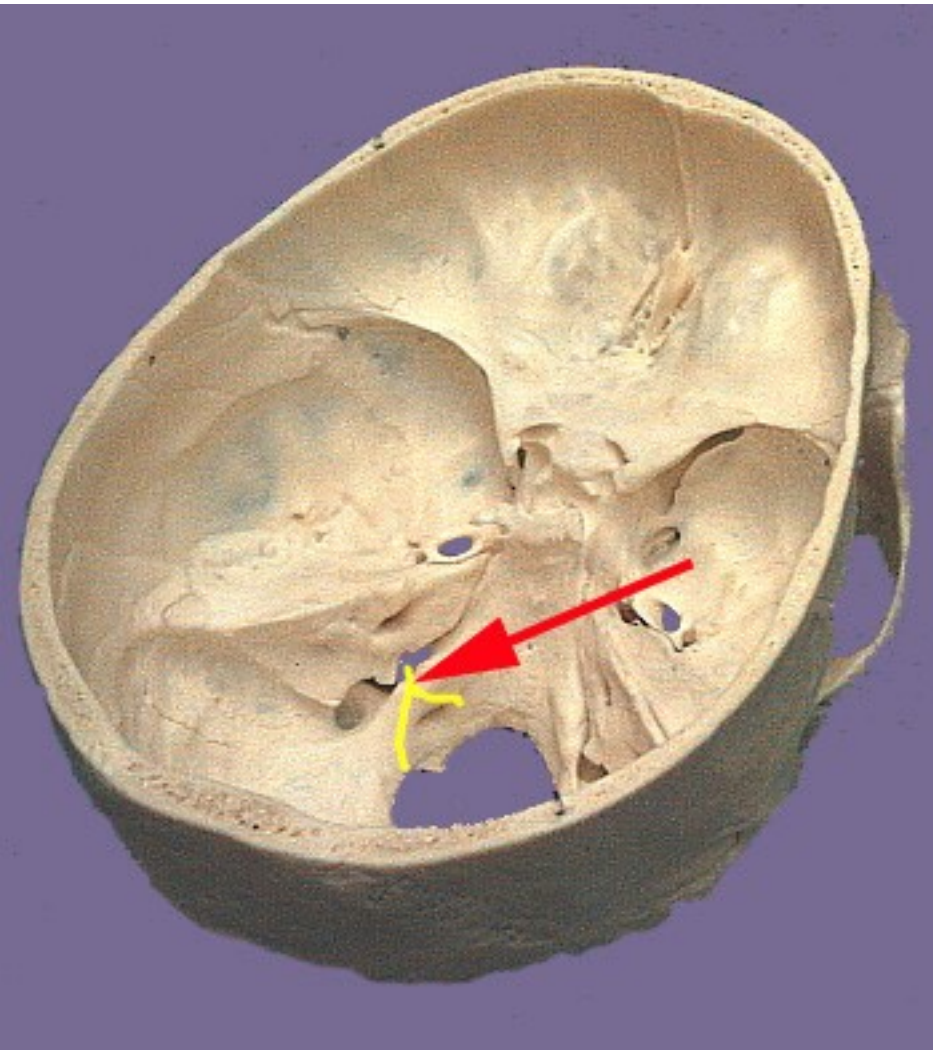




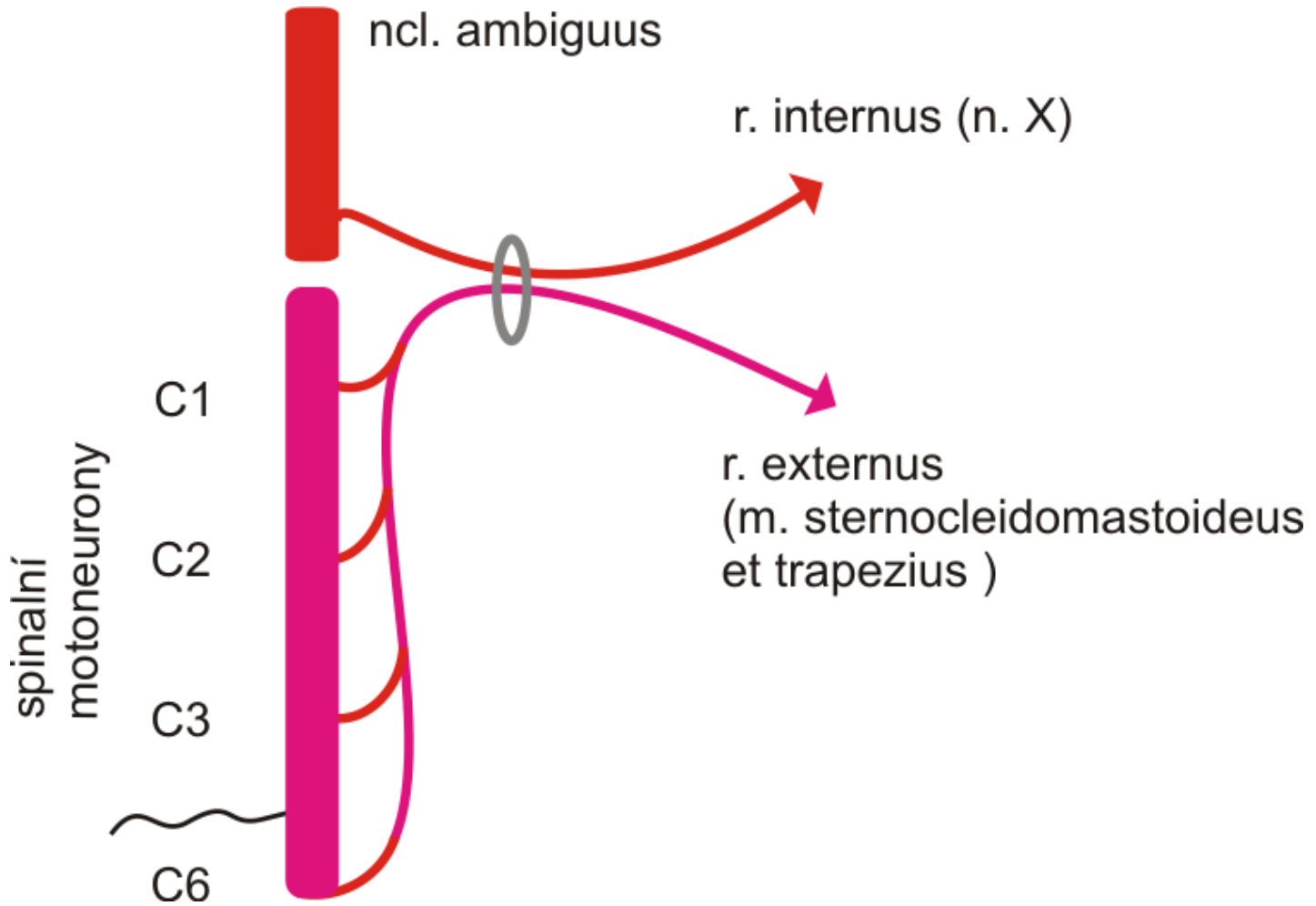


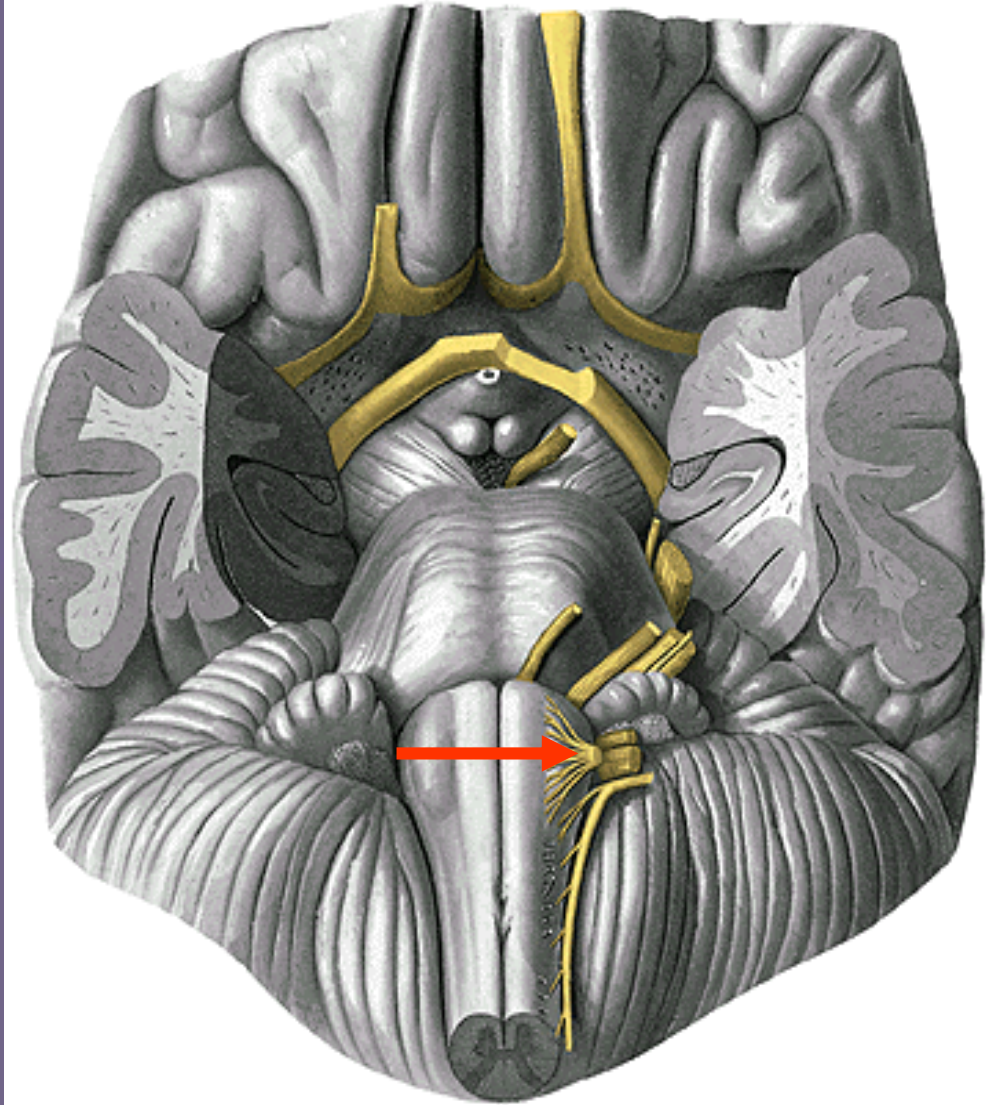
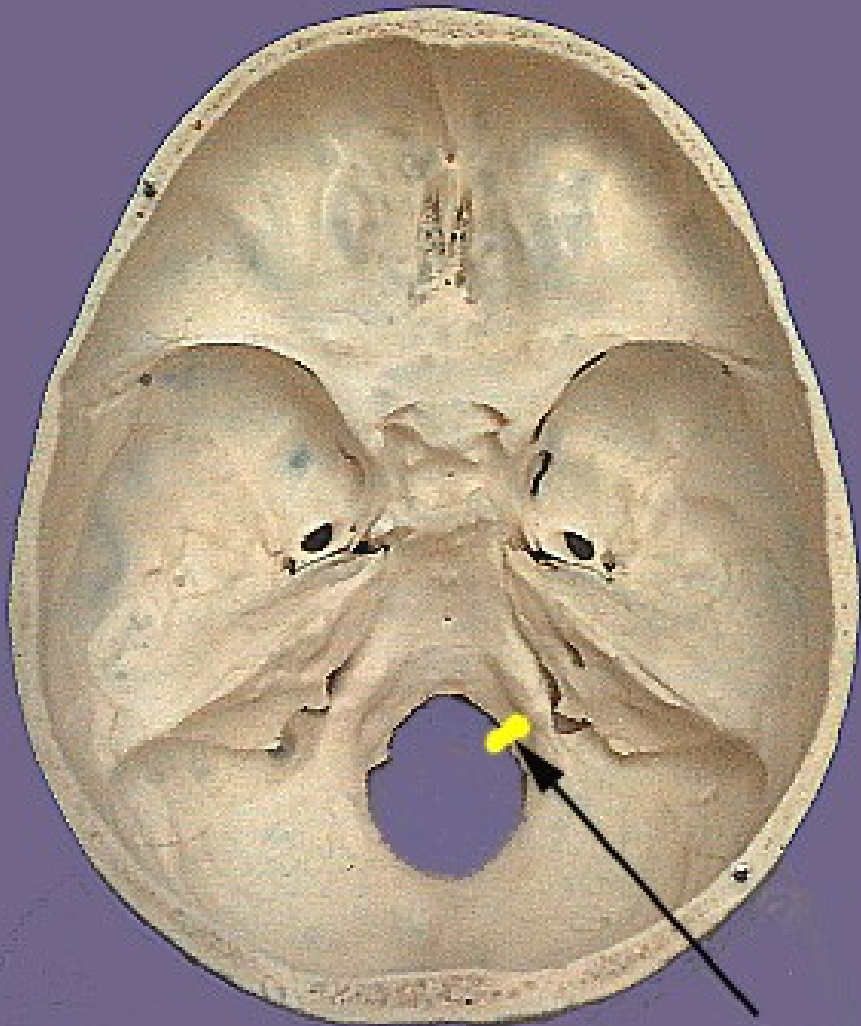


n. XI.



n. XI.





n. XII.

n. XII.

