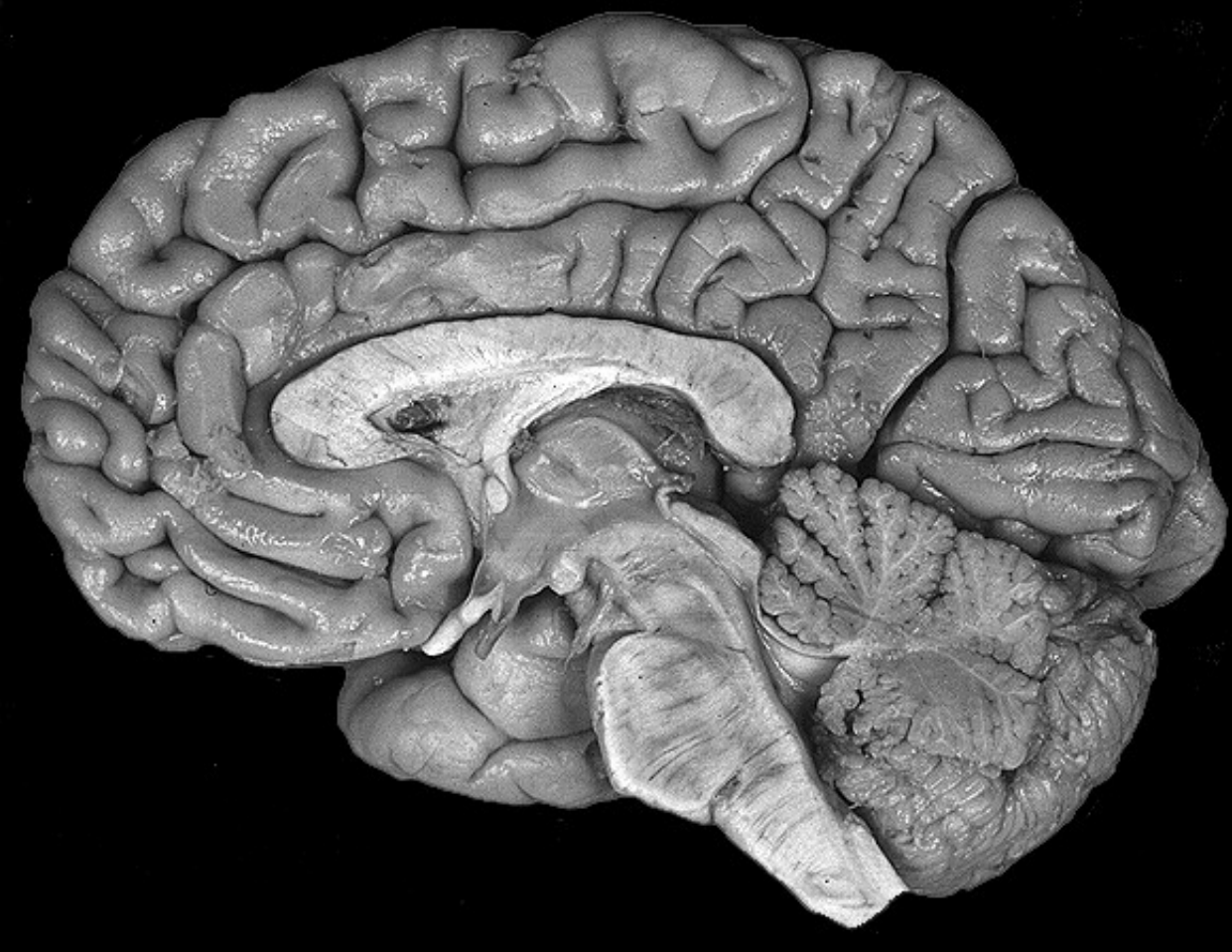
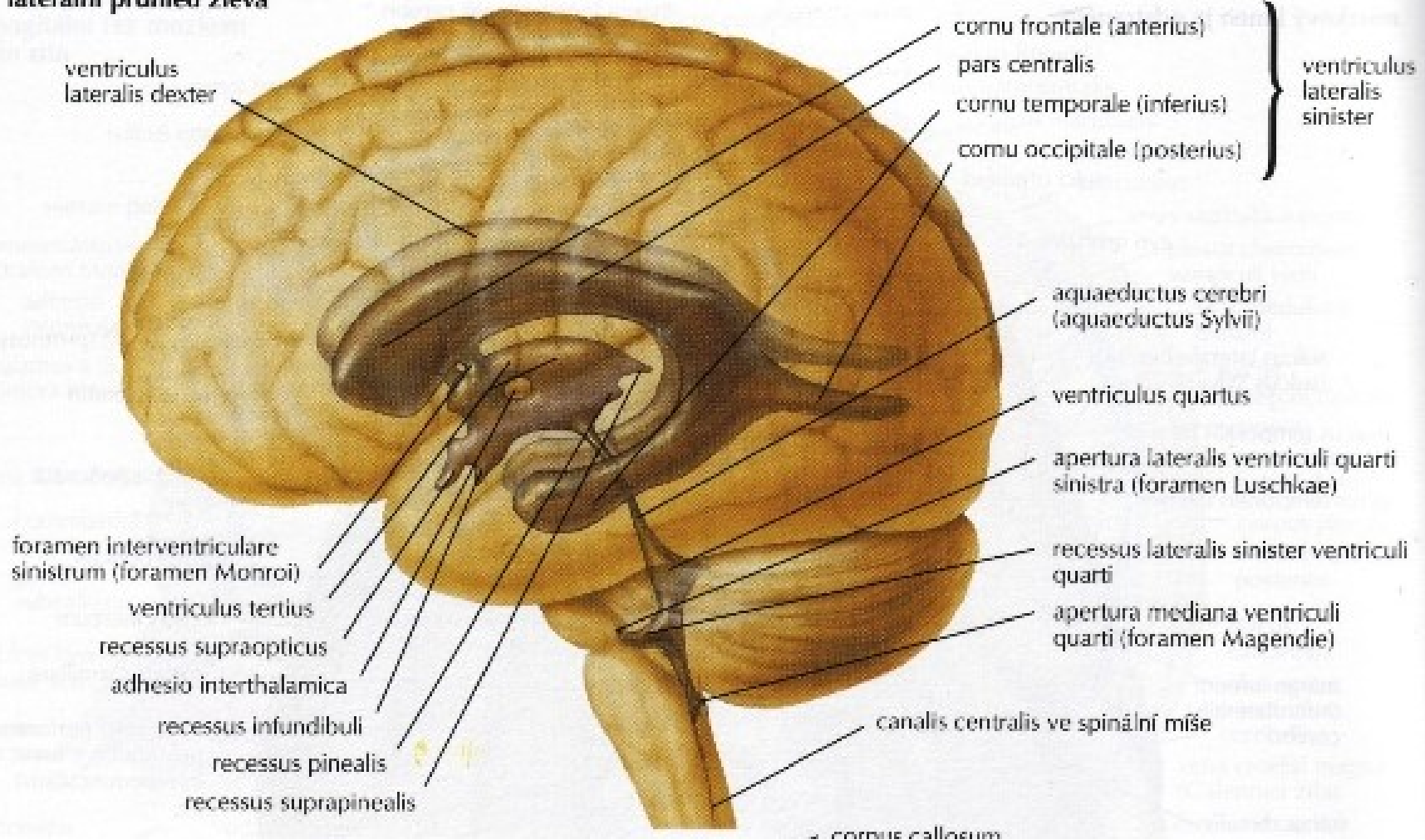


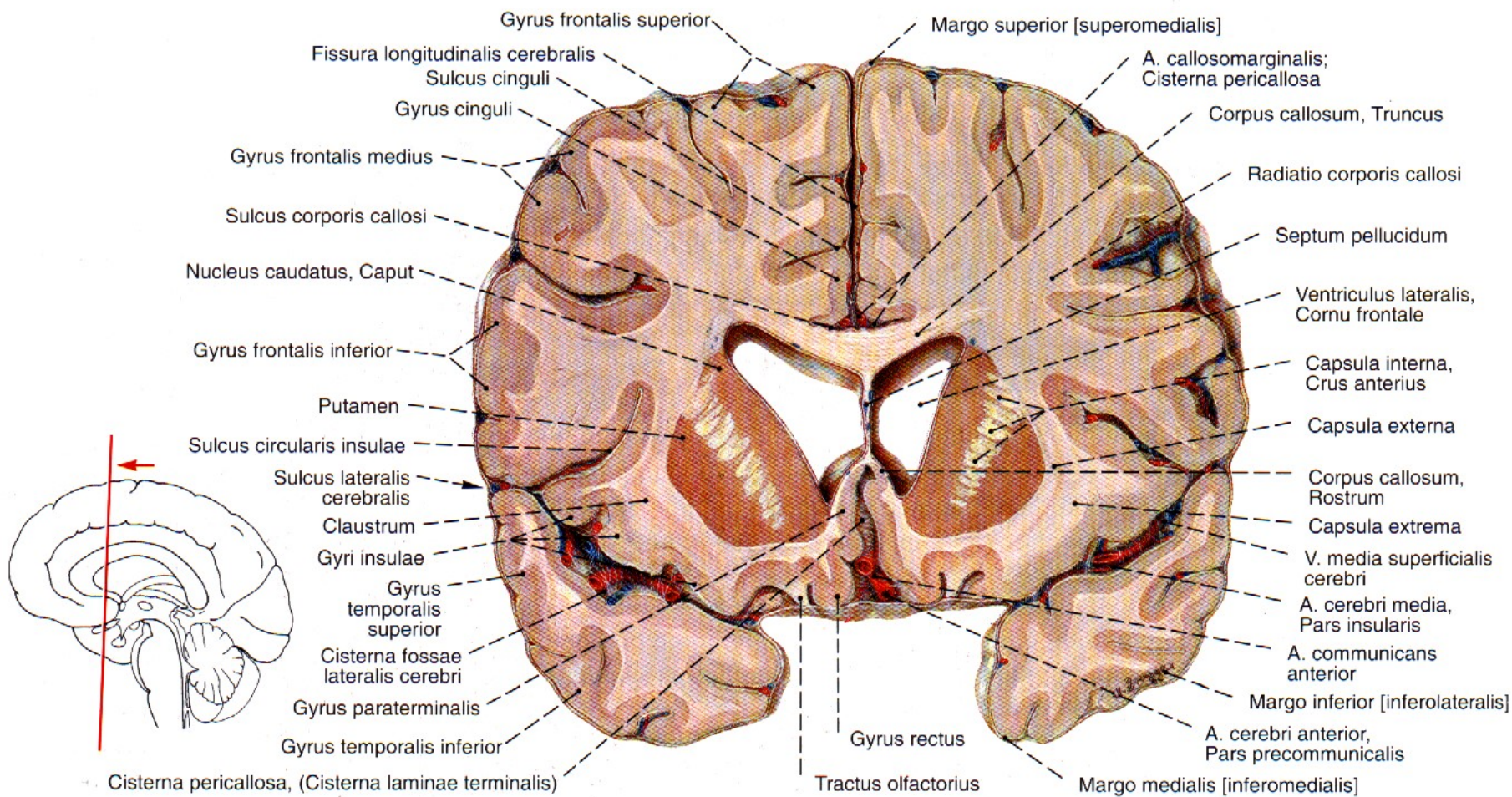
Komory, obaly a cévní zásobení CNS

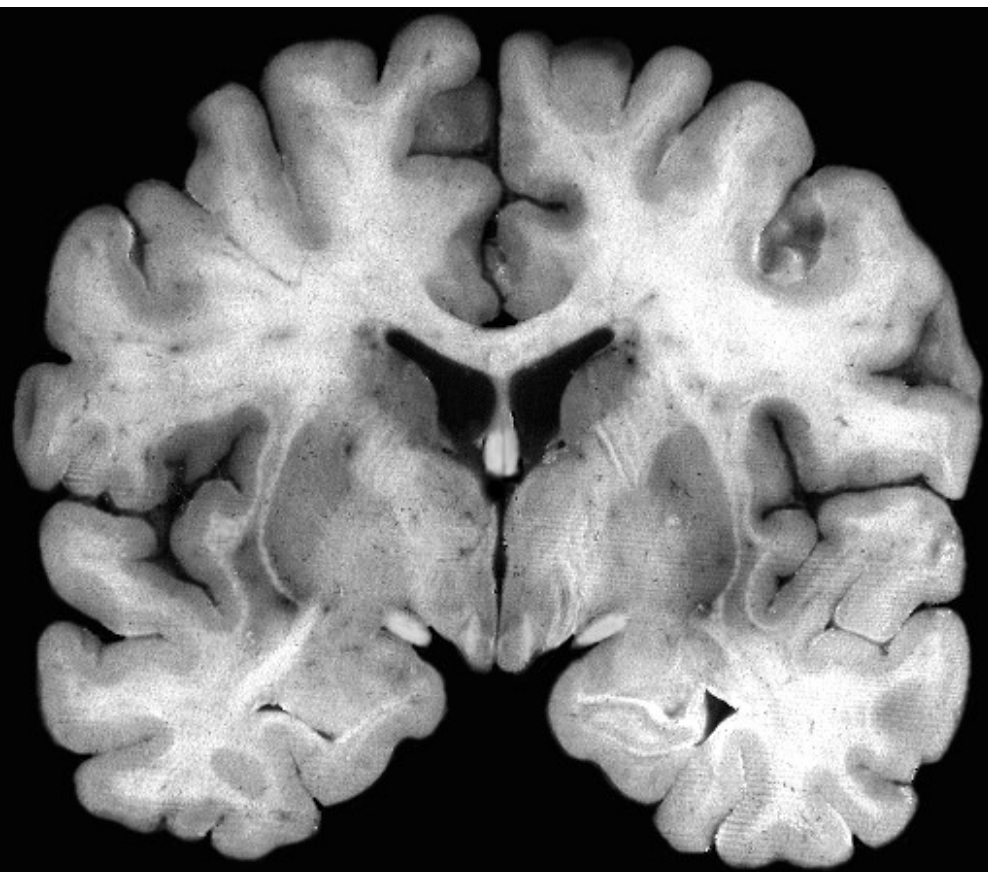
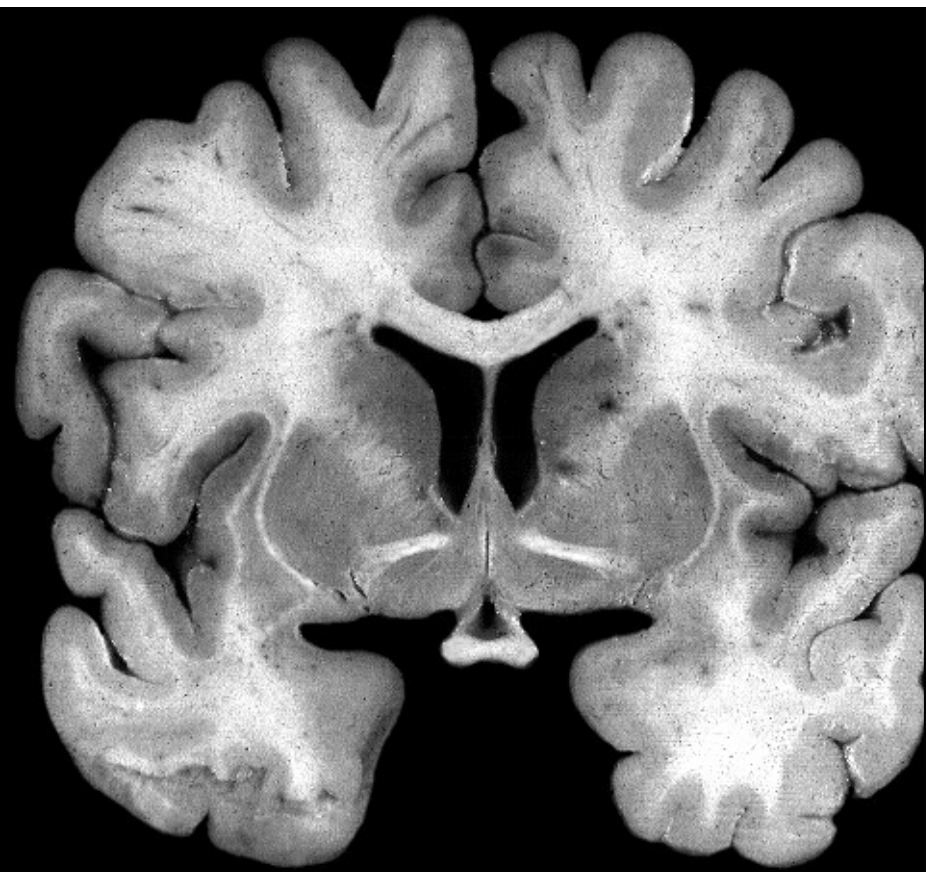


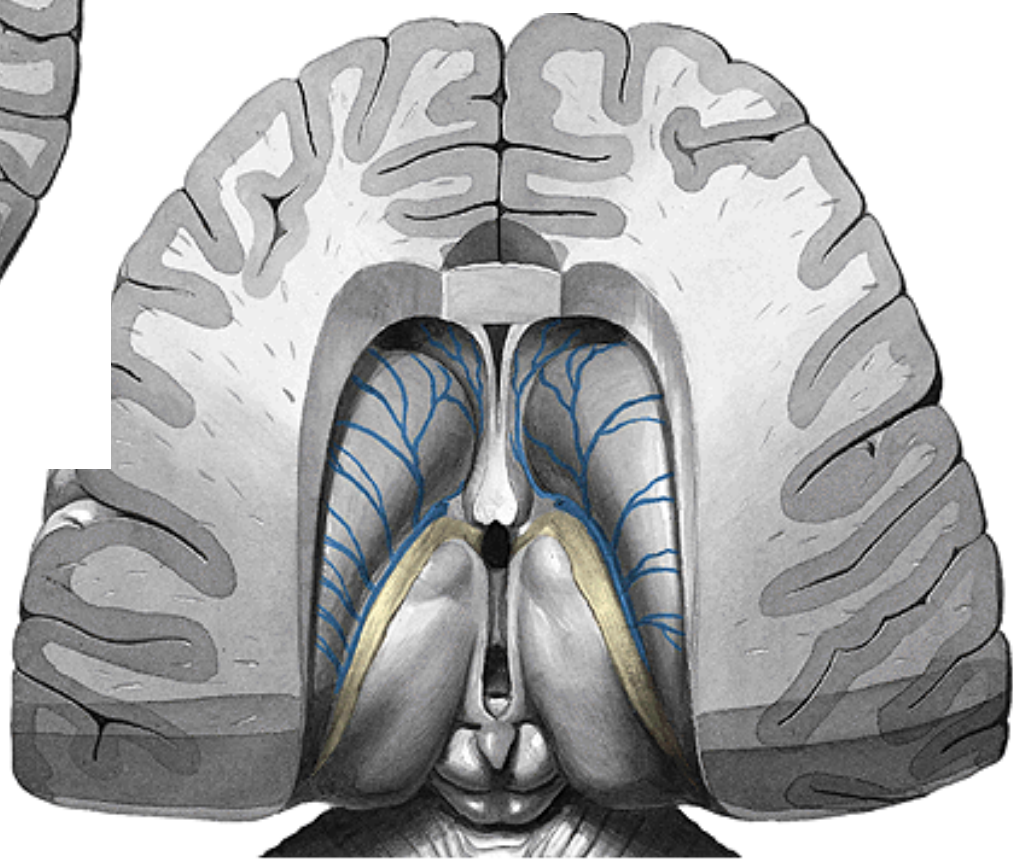
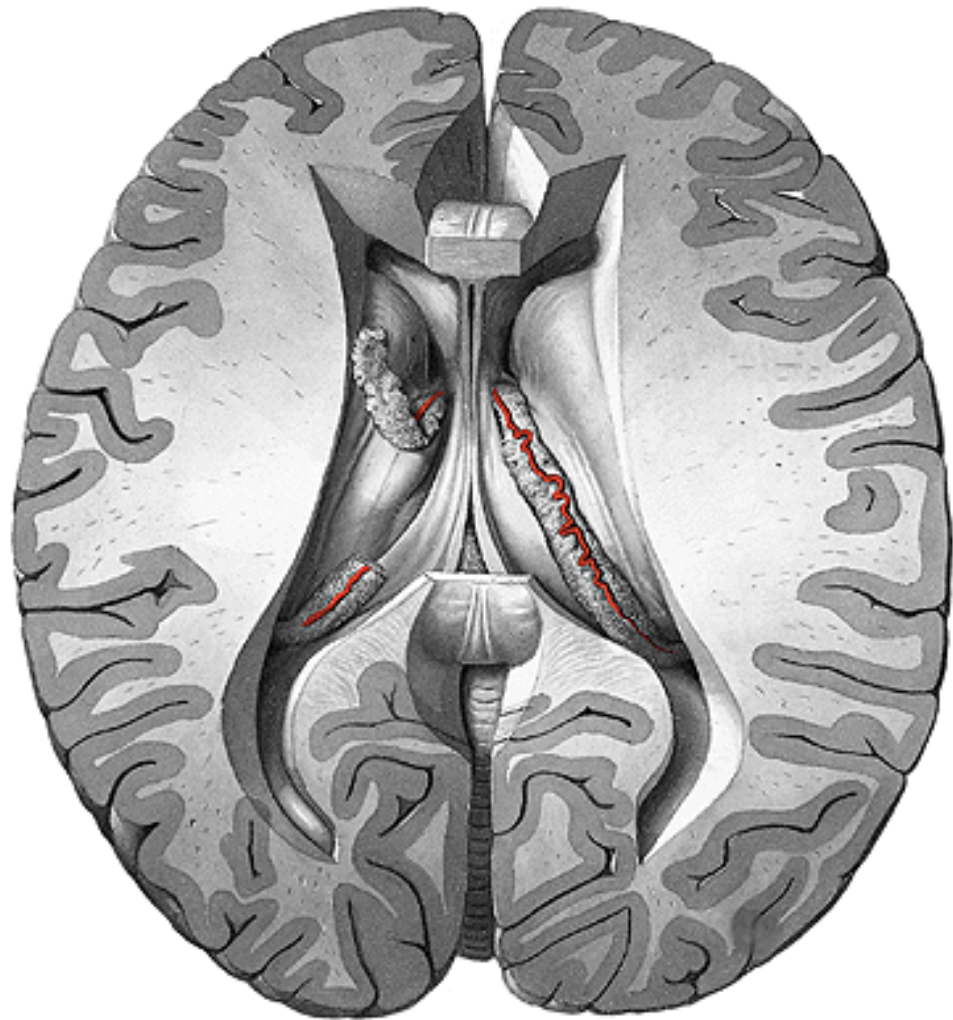


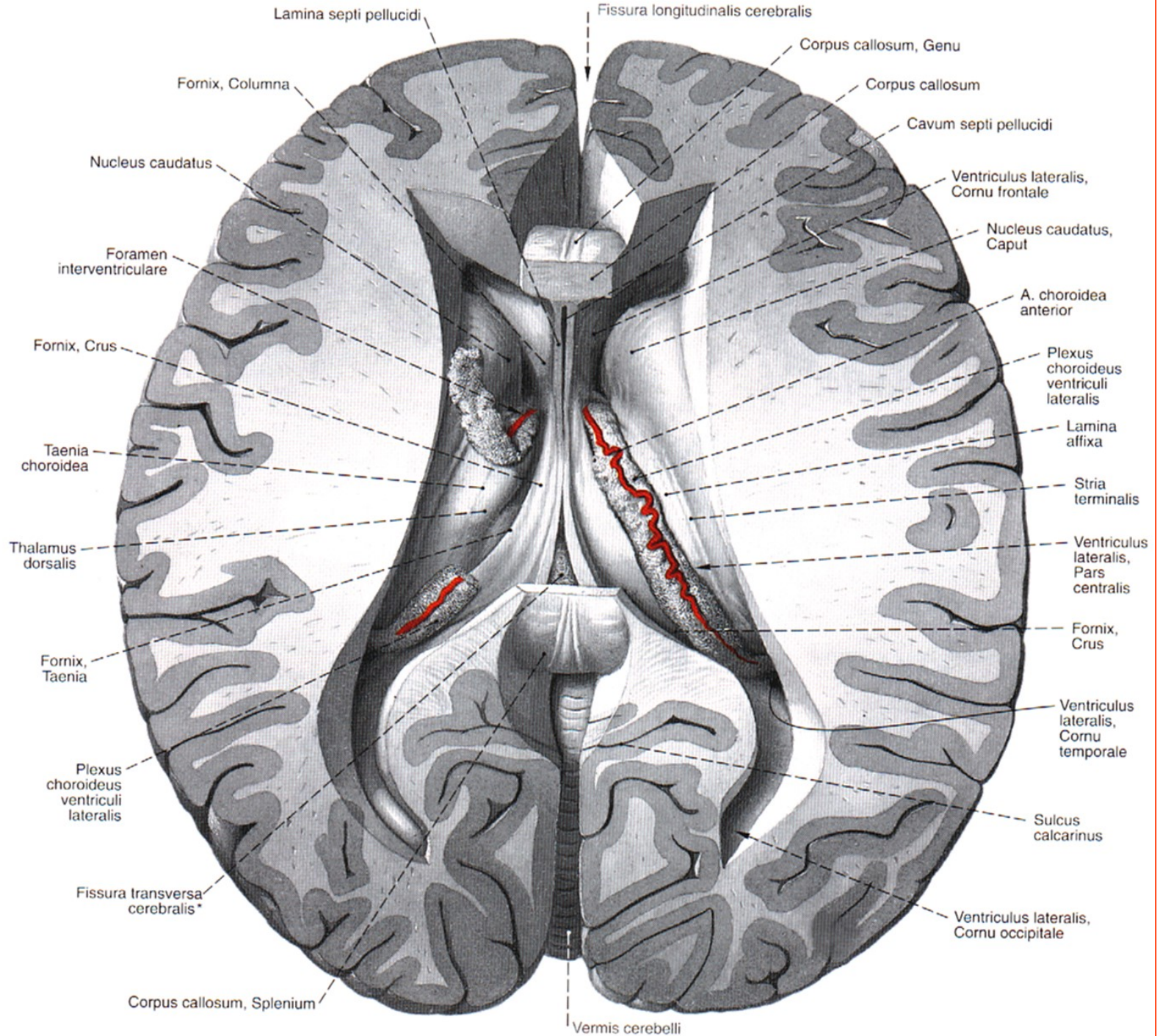
laterální průhled zleva

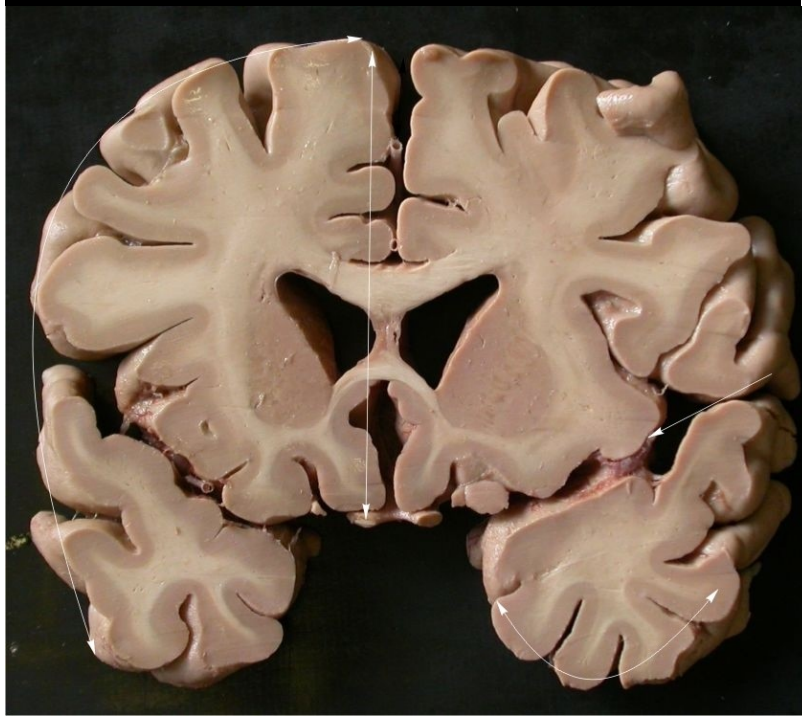
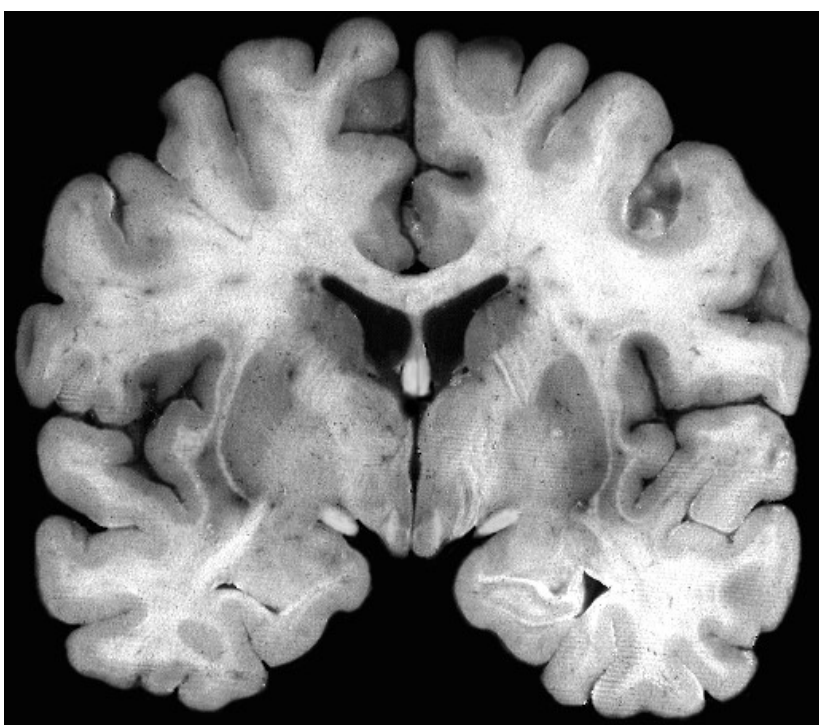
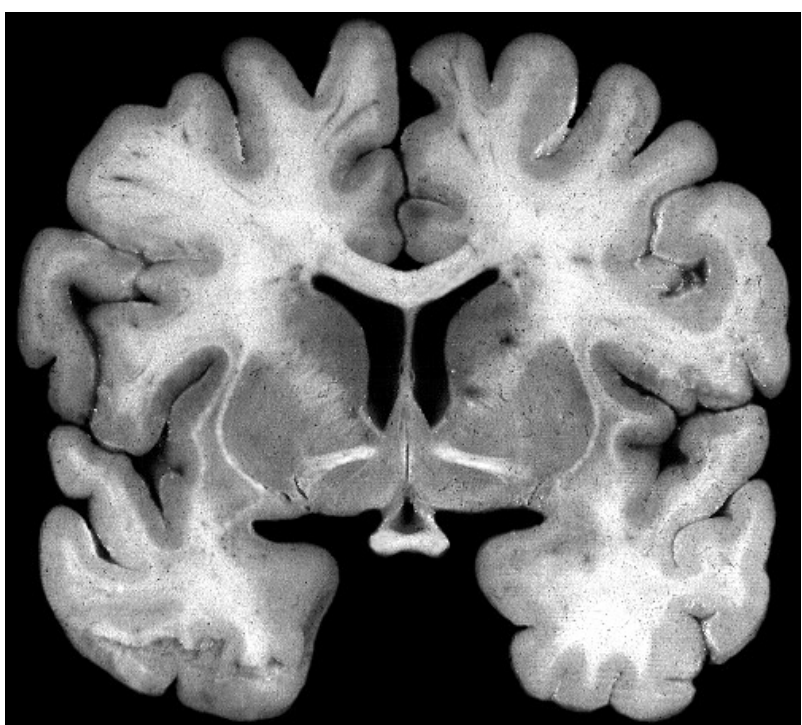




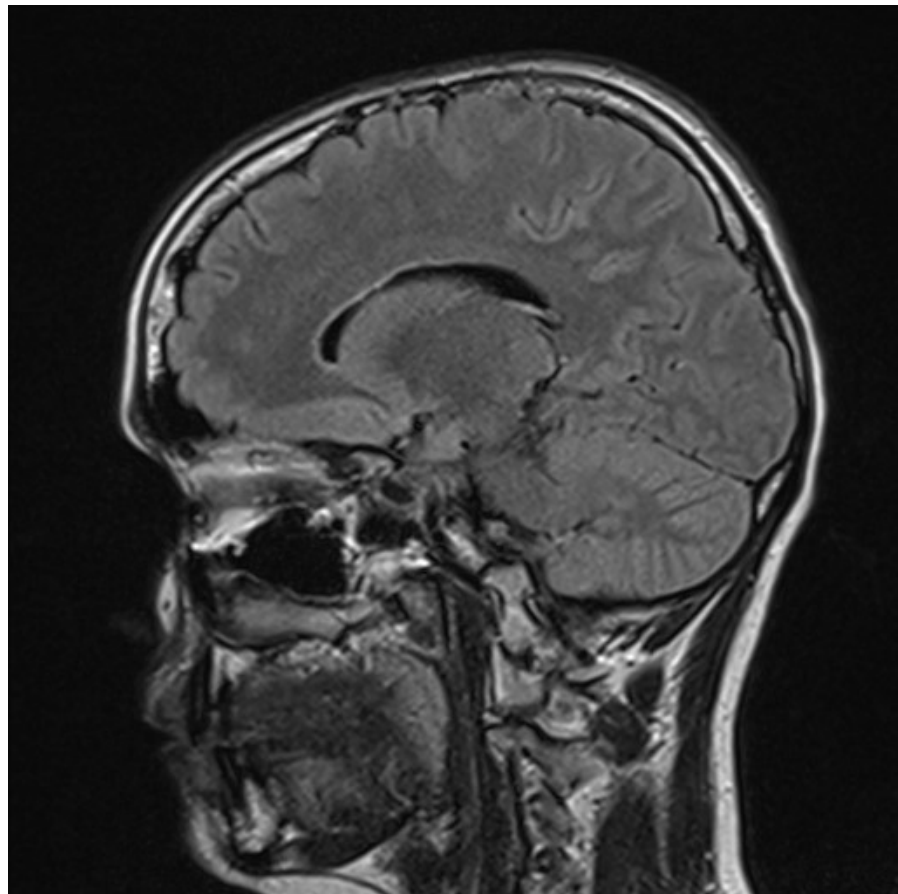
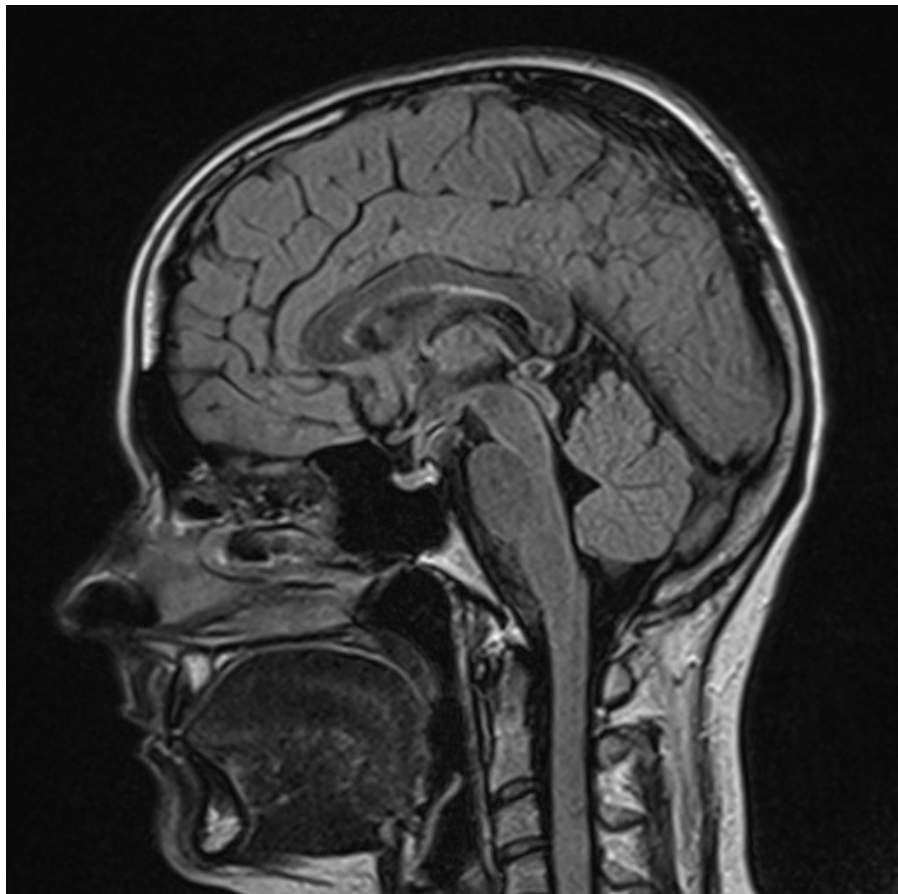




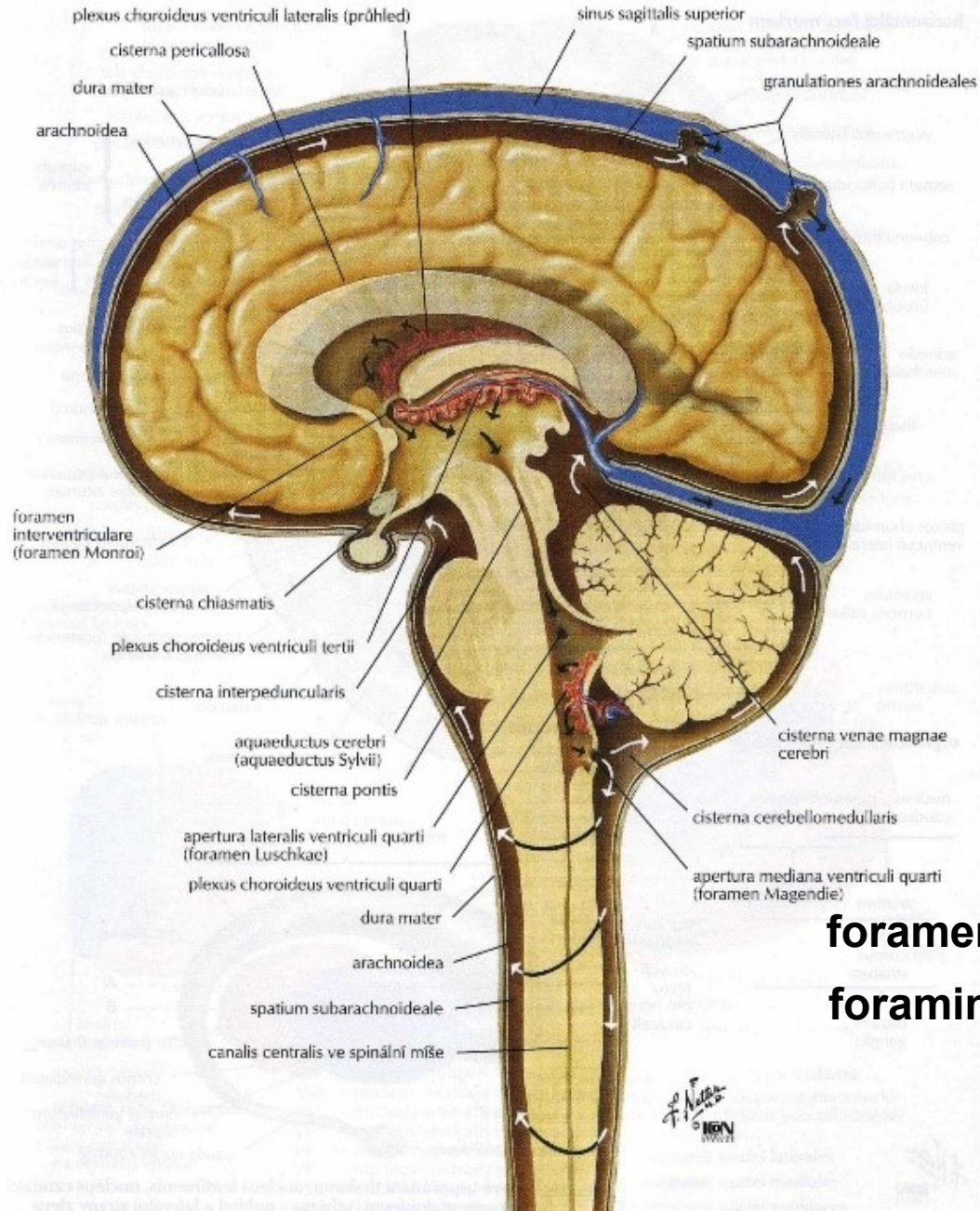




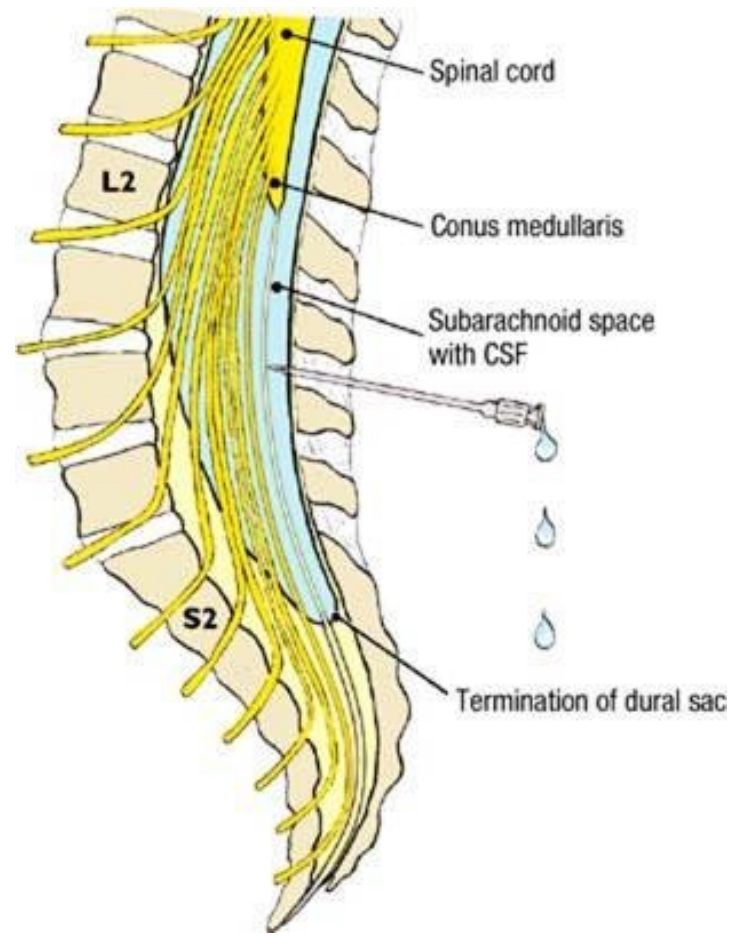
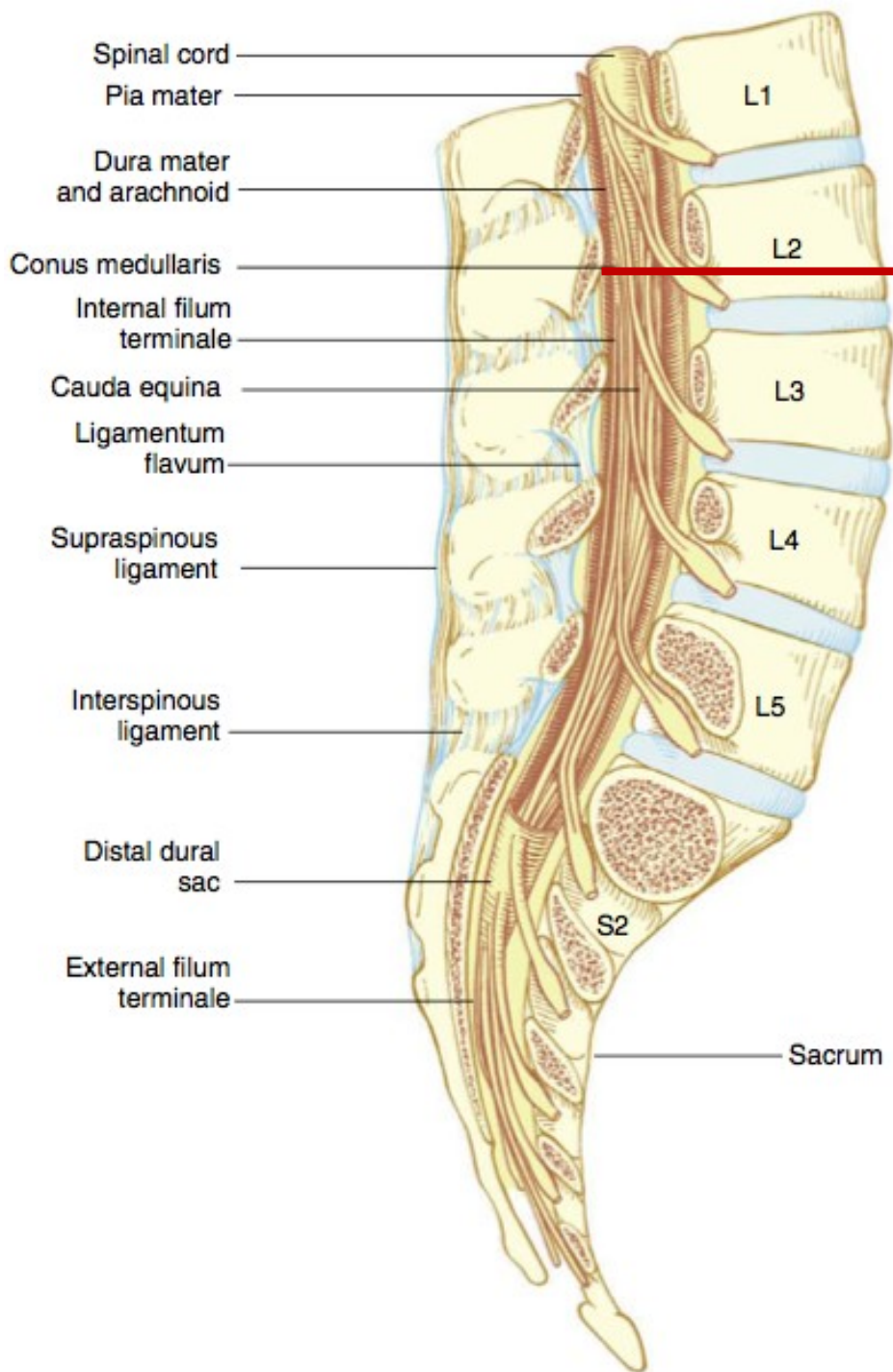
CT vyšetření

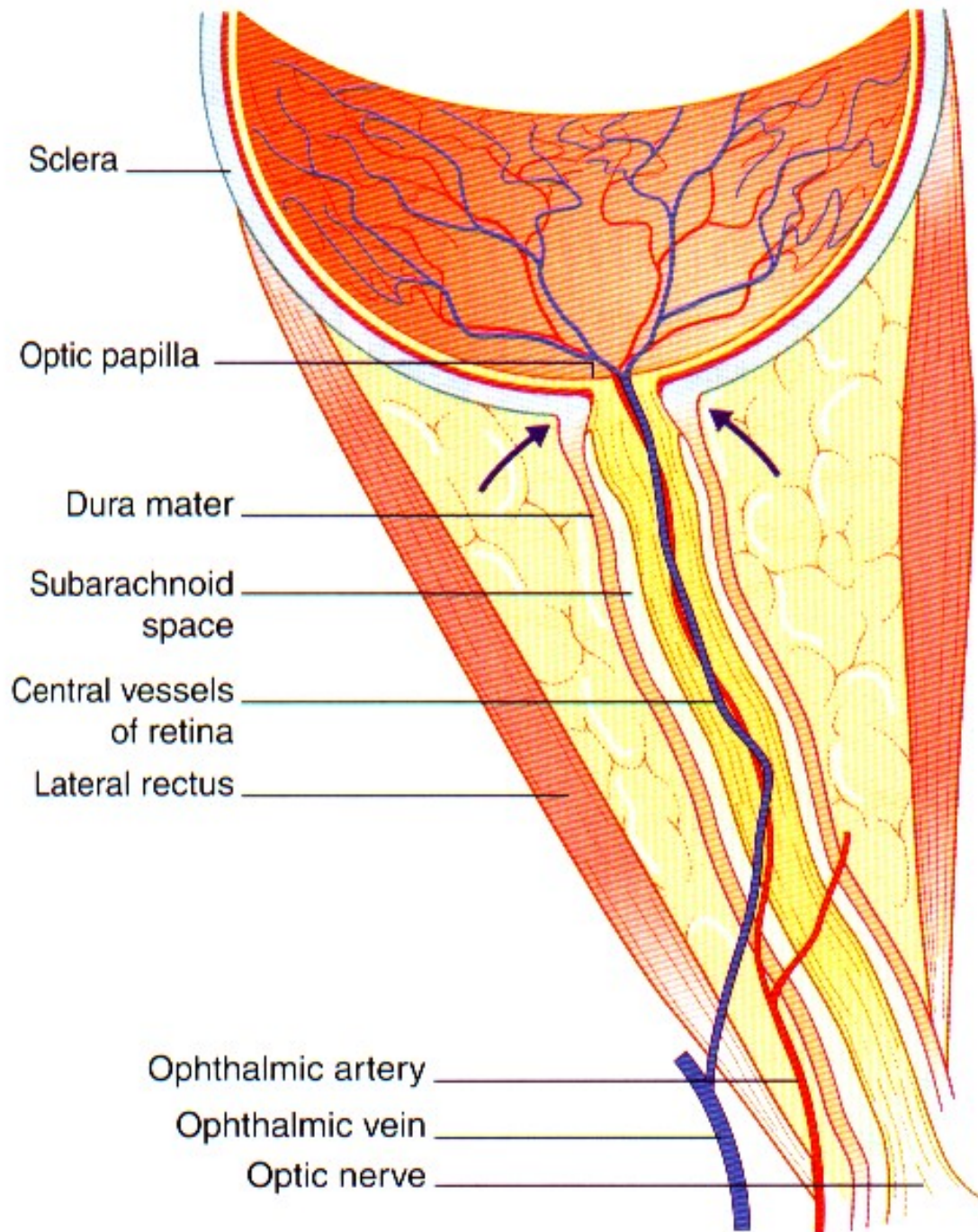


Cirkulace mozkomíšního moku



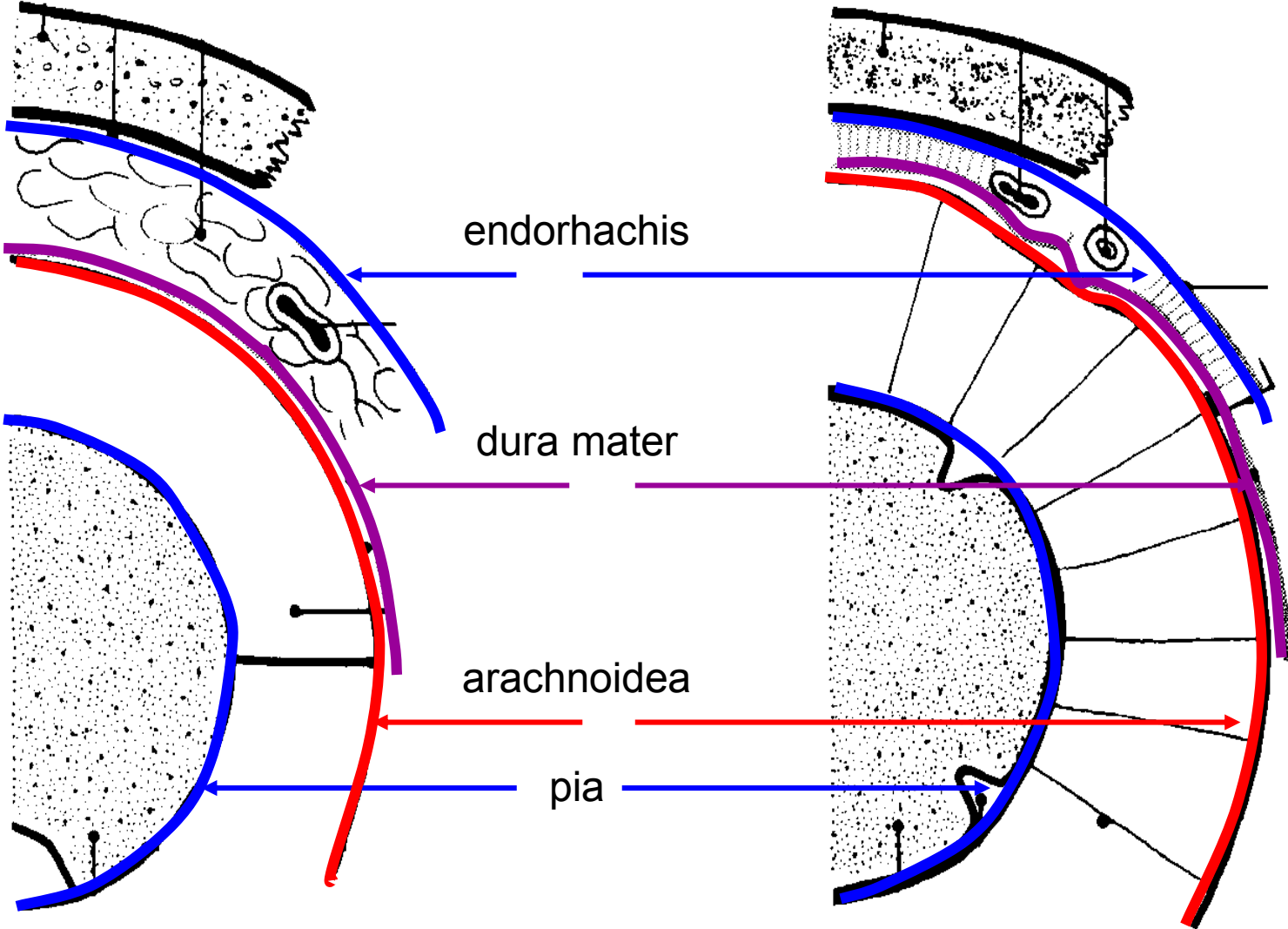
foramen Magendie
foramina Luschkae

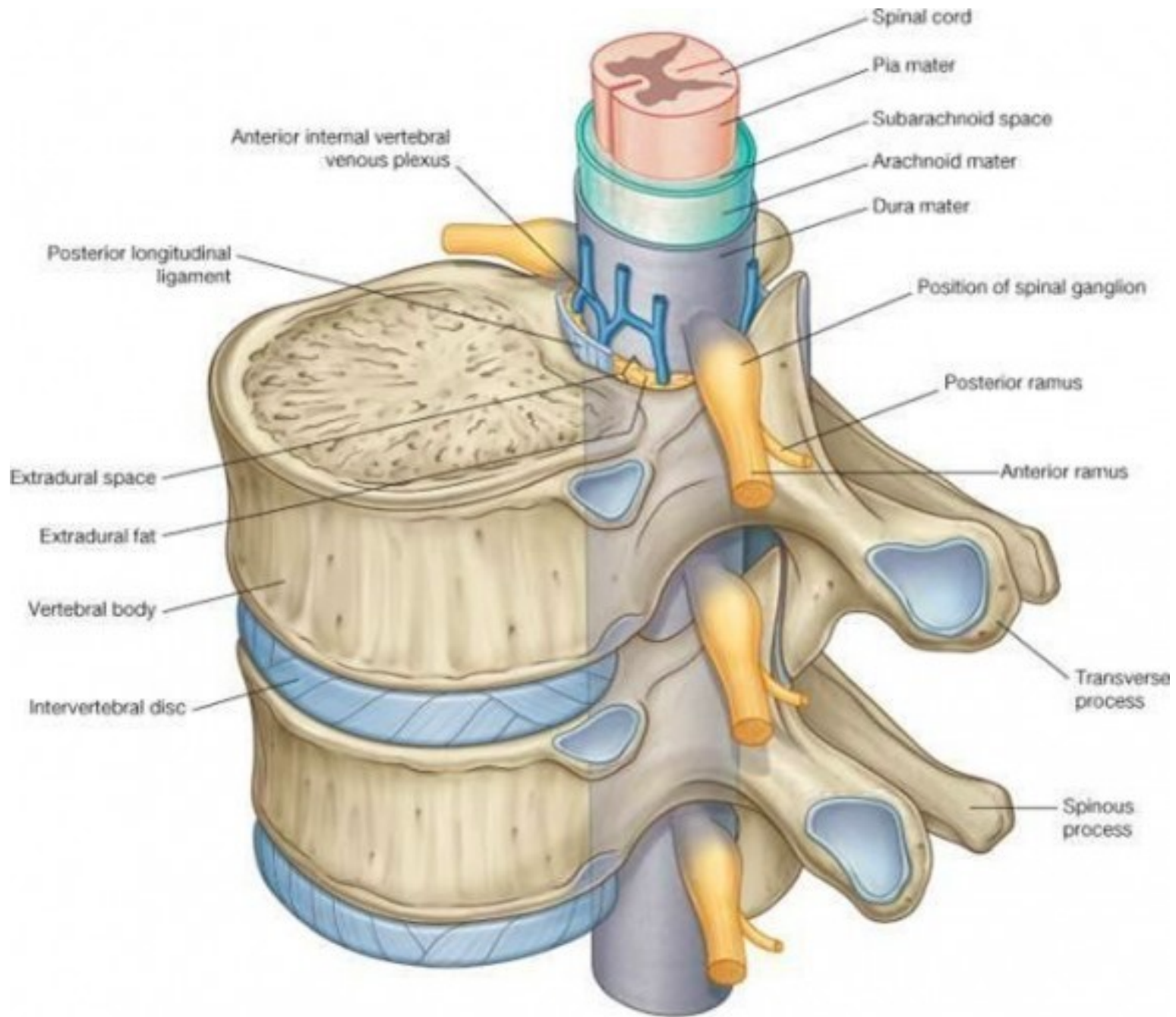


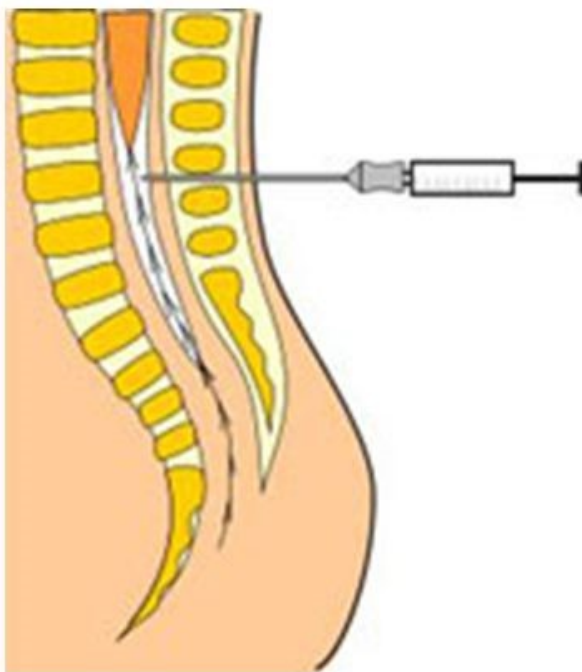


**zvýšený tlak CST podél n. opticus –
komprese v. centralis retinae –
papilledema, papilární edém**

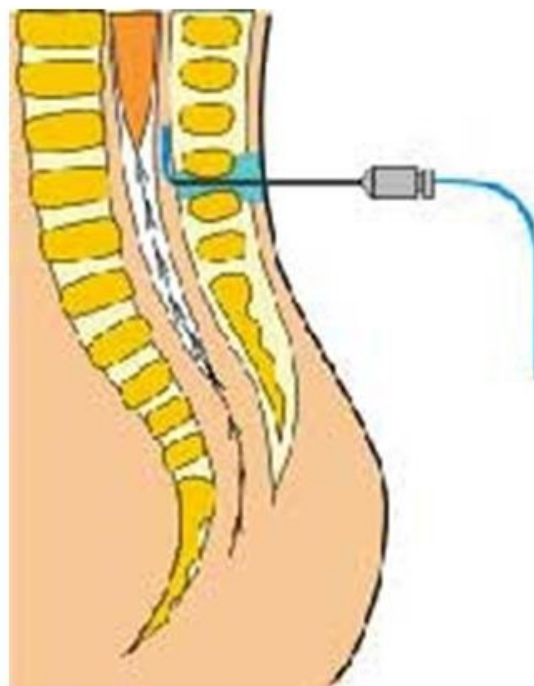
Obaly CNS





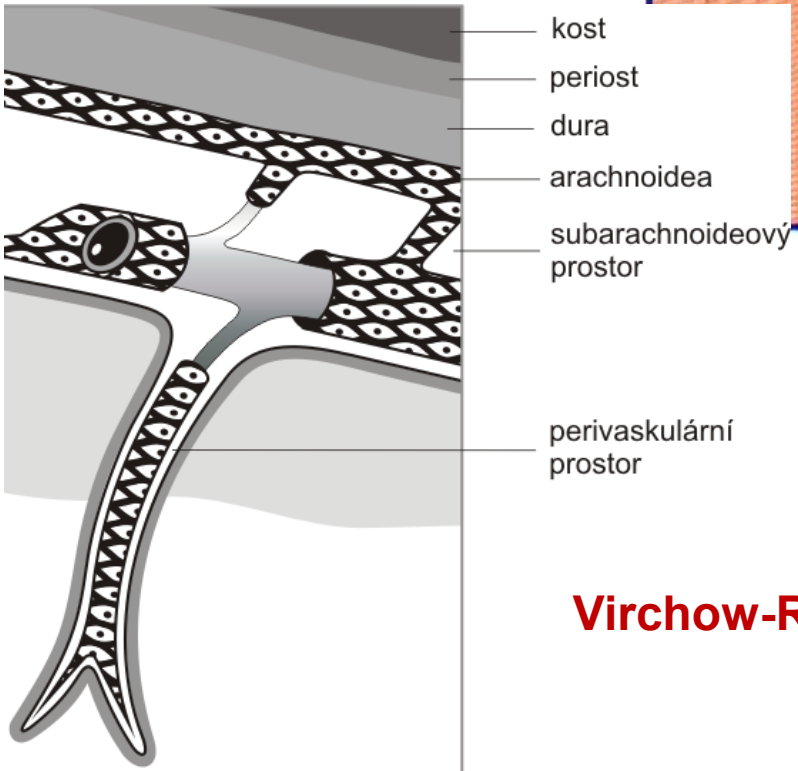
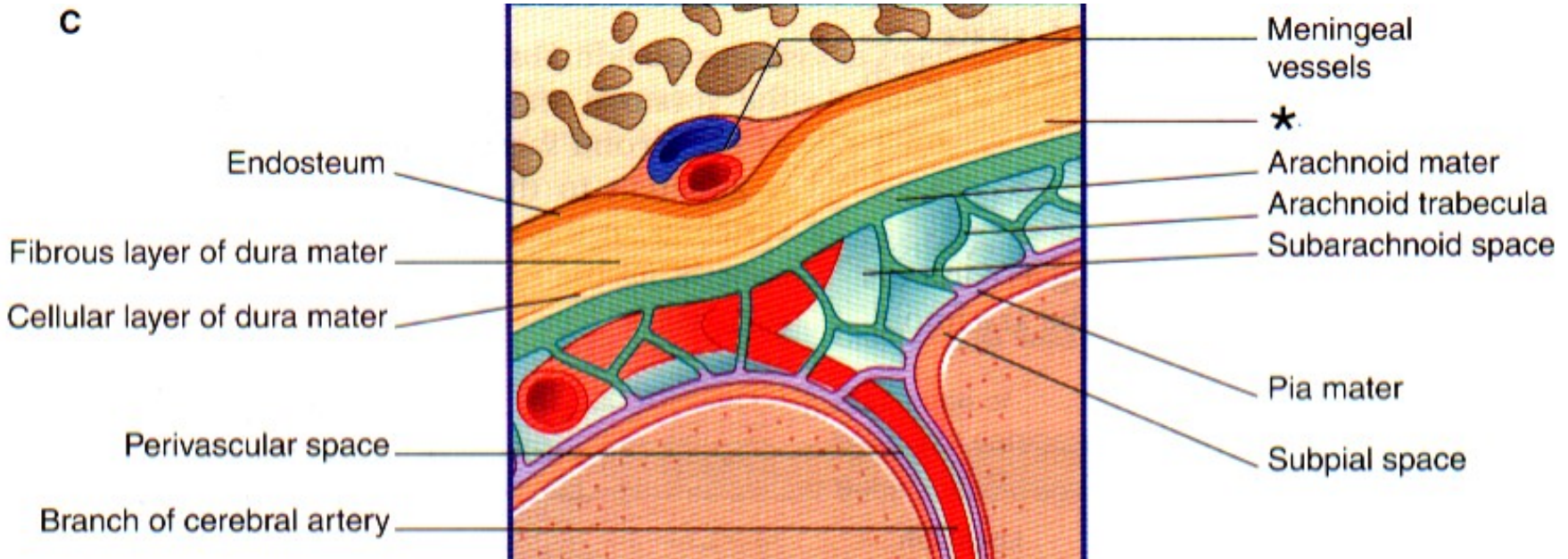


- subarachnoidální anestézie
= „spinál“



- epidurální anestézie
= „epidurál“

C

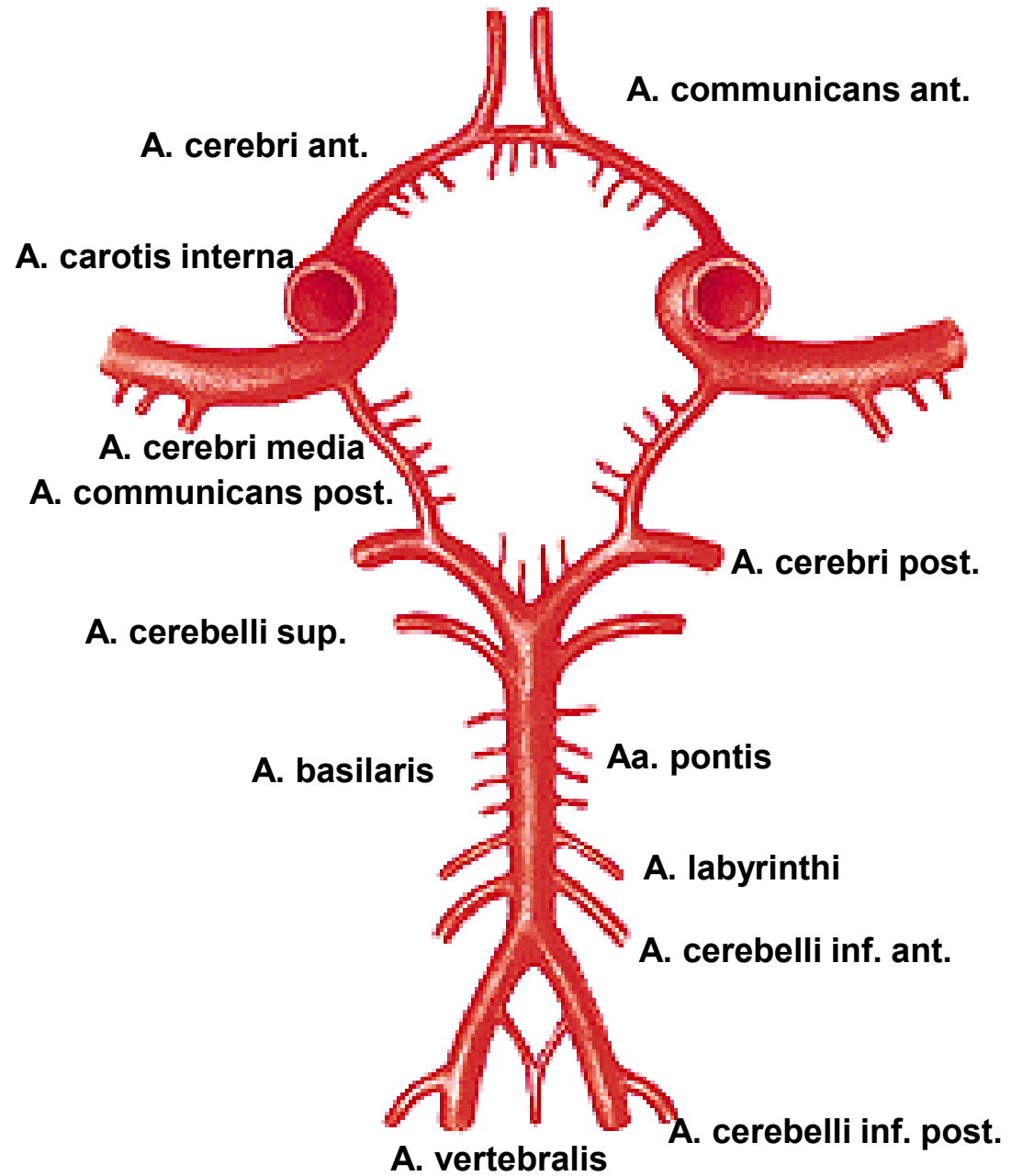
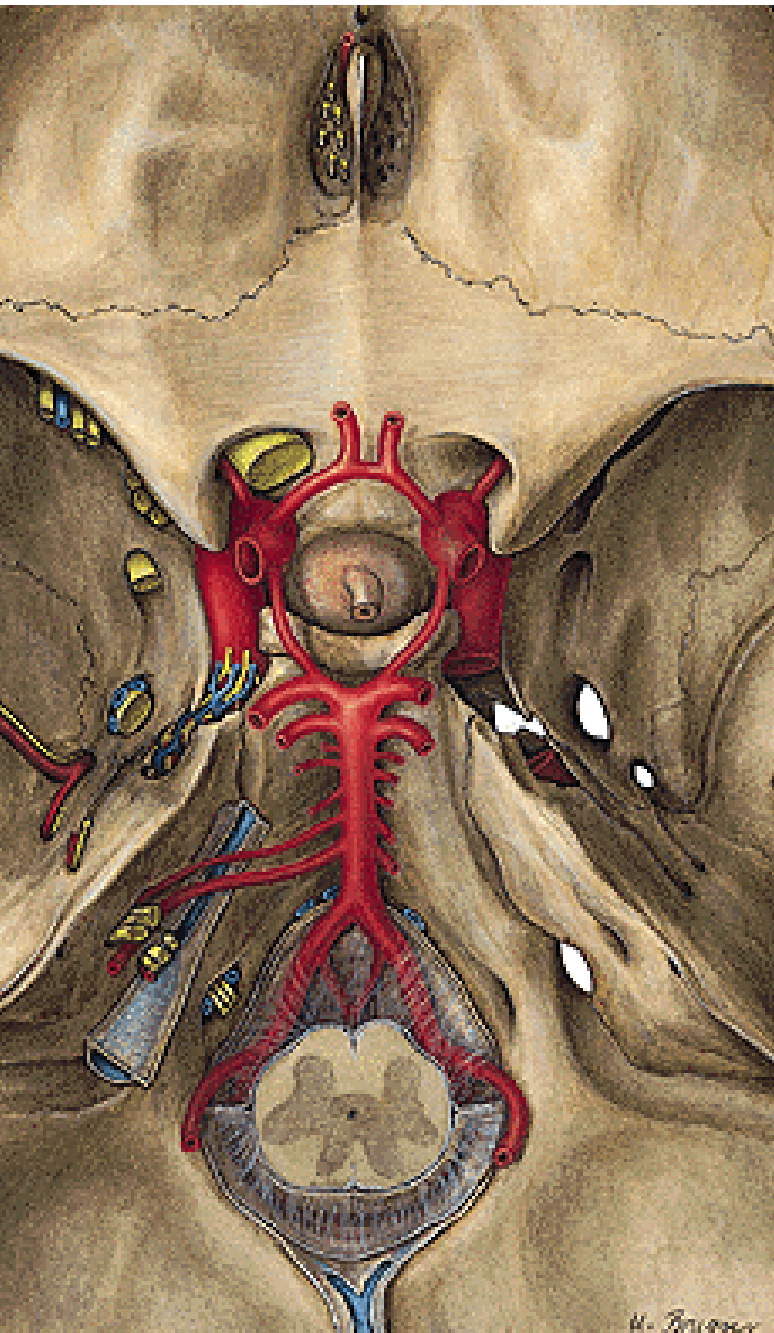


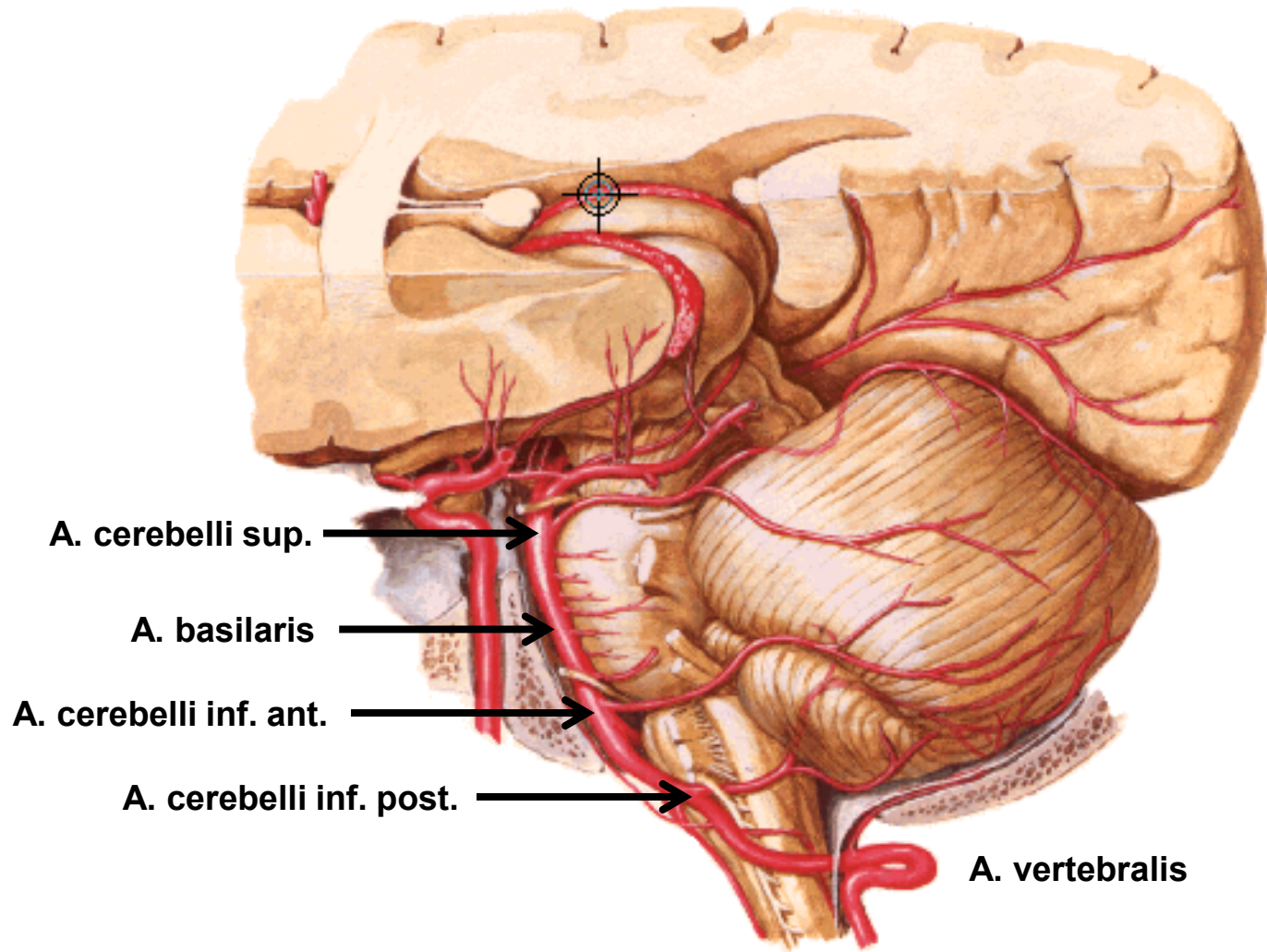
Virchow-Robinův perivaskulární prostor

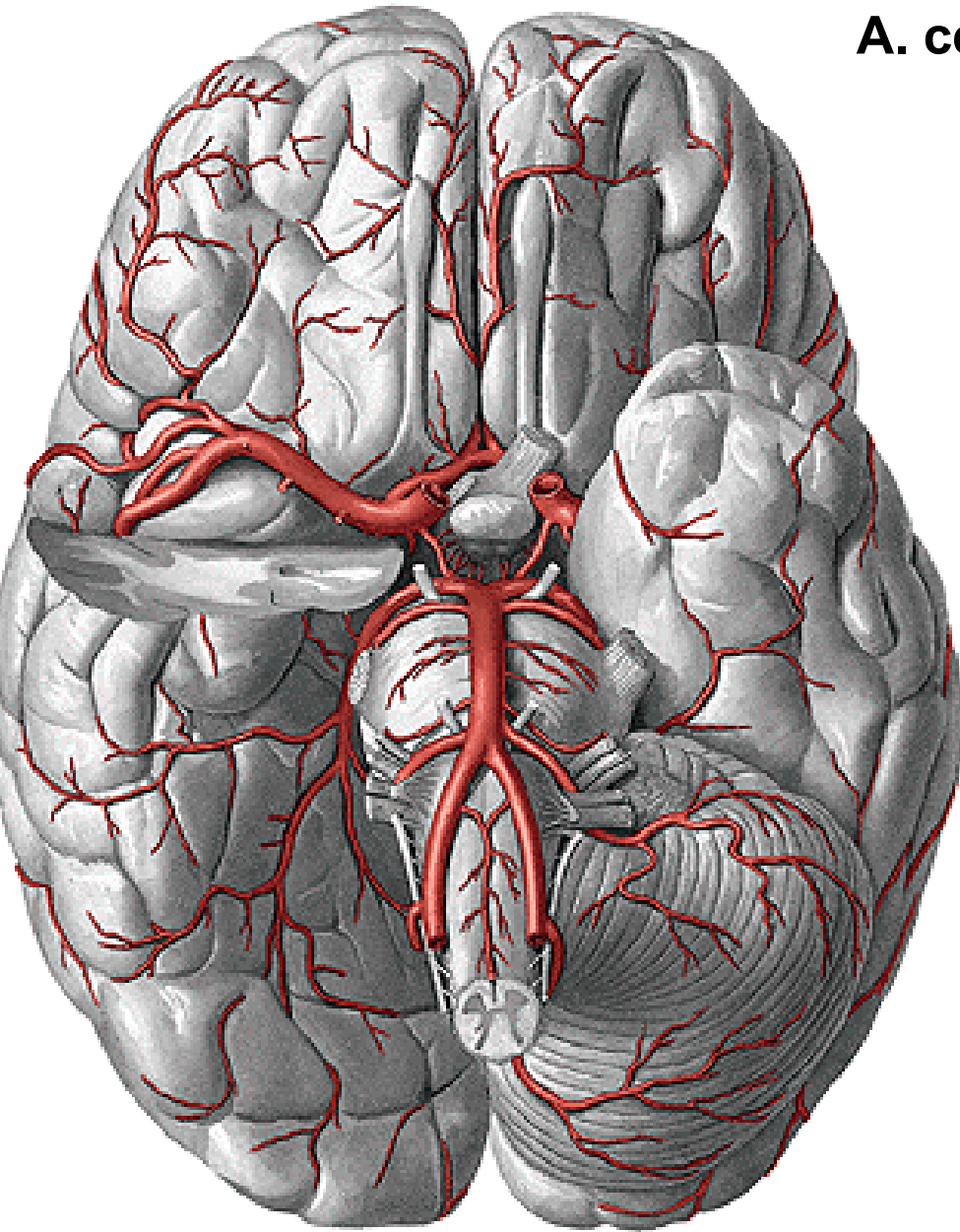
Deriváty dura mater



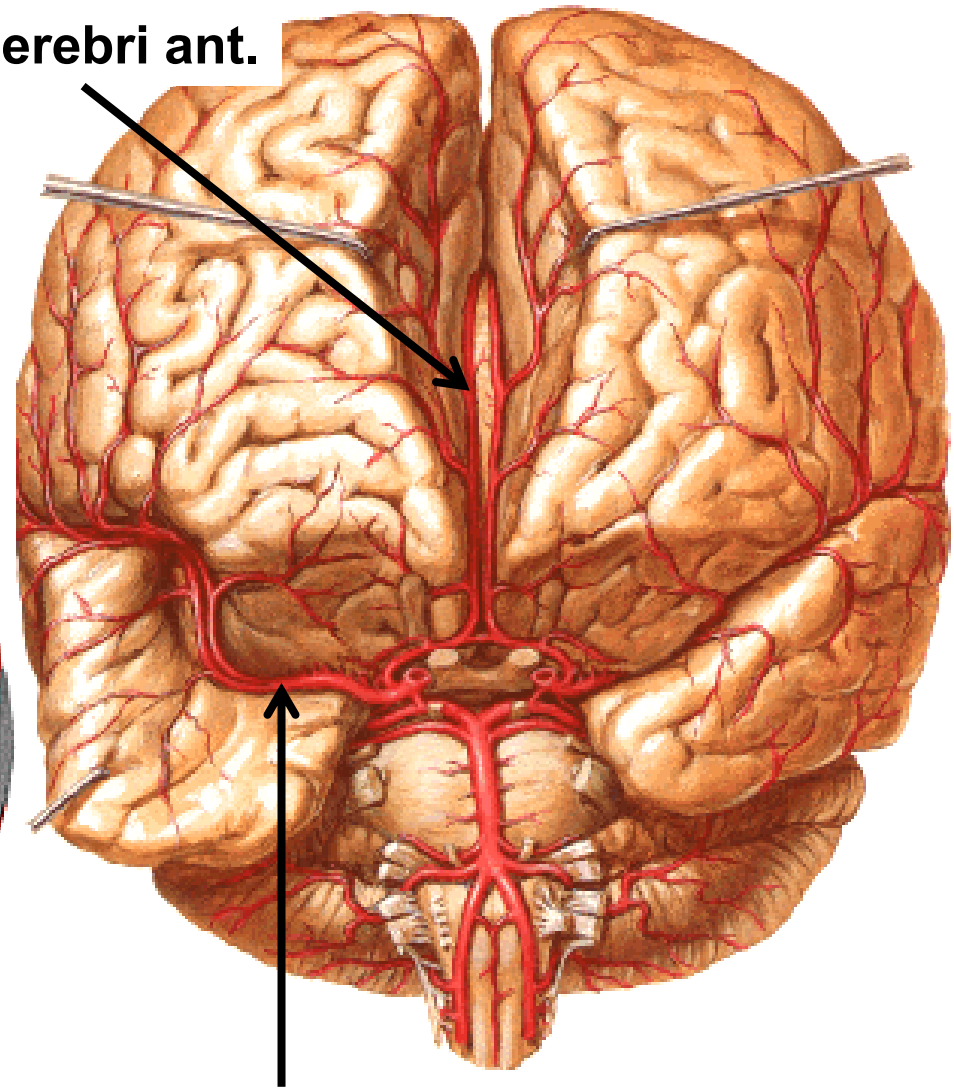
Circulus arteriosus cerebri (Willis)



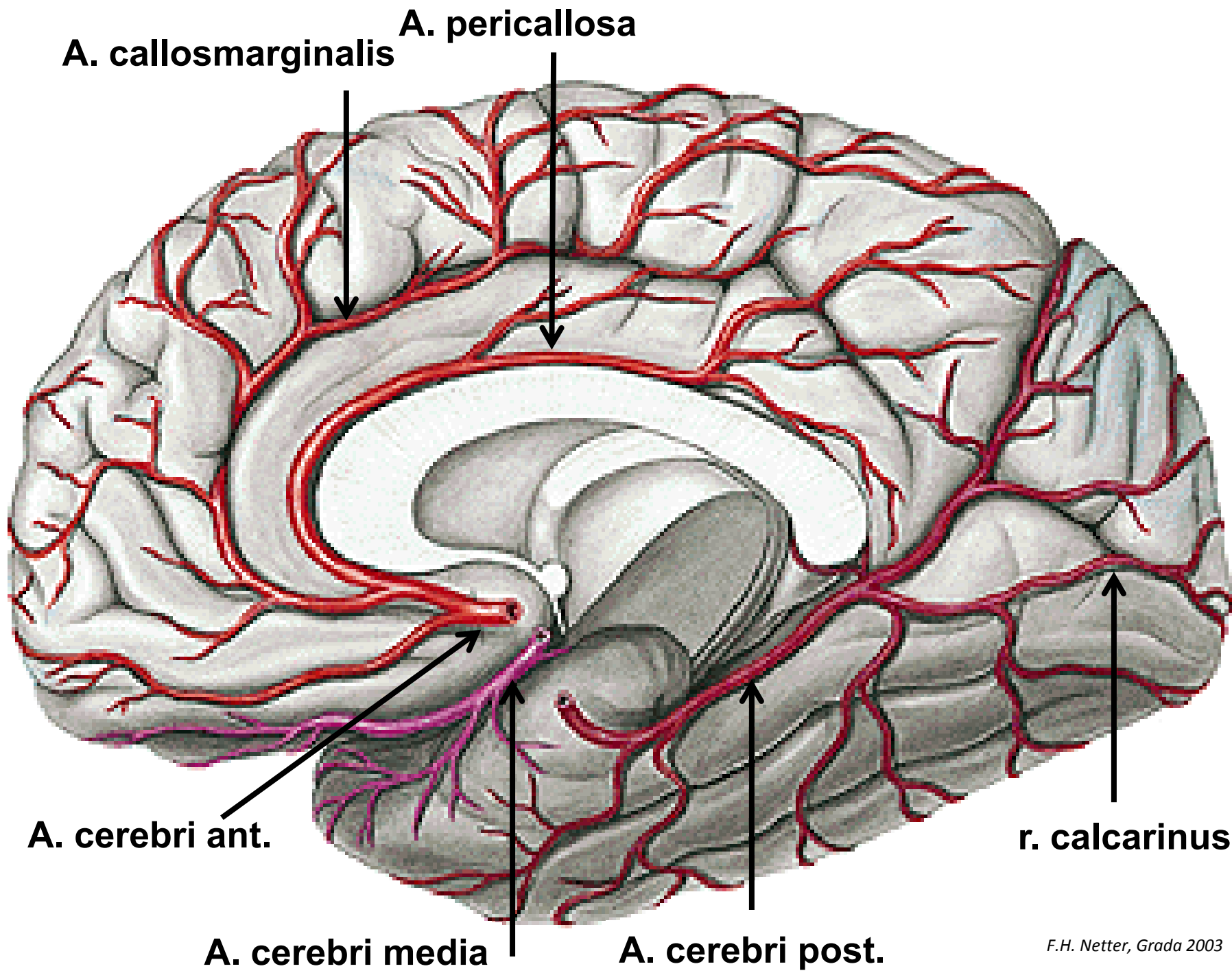




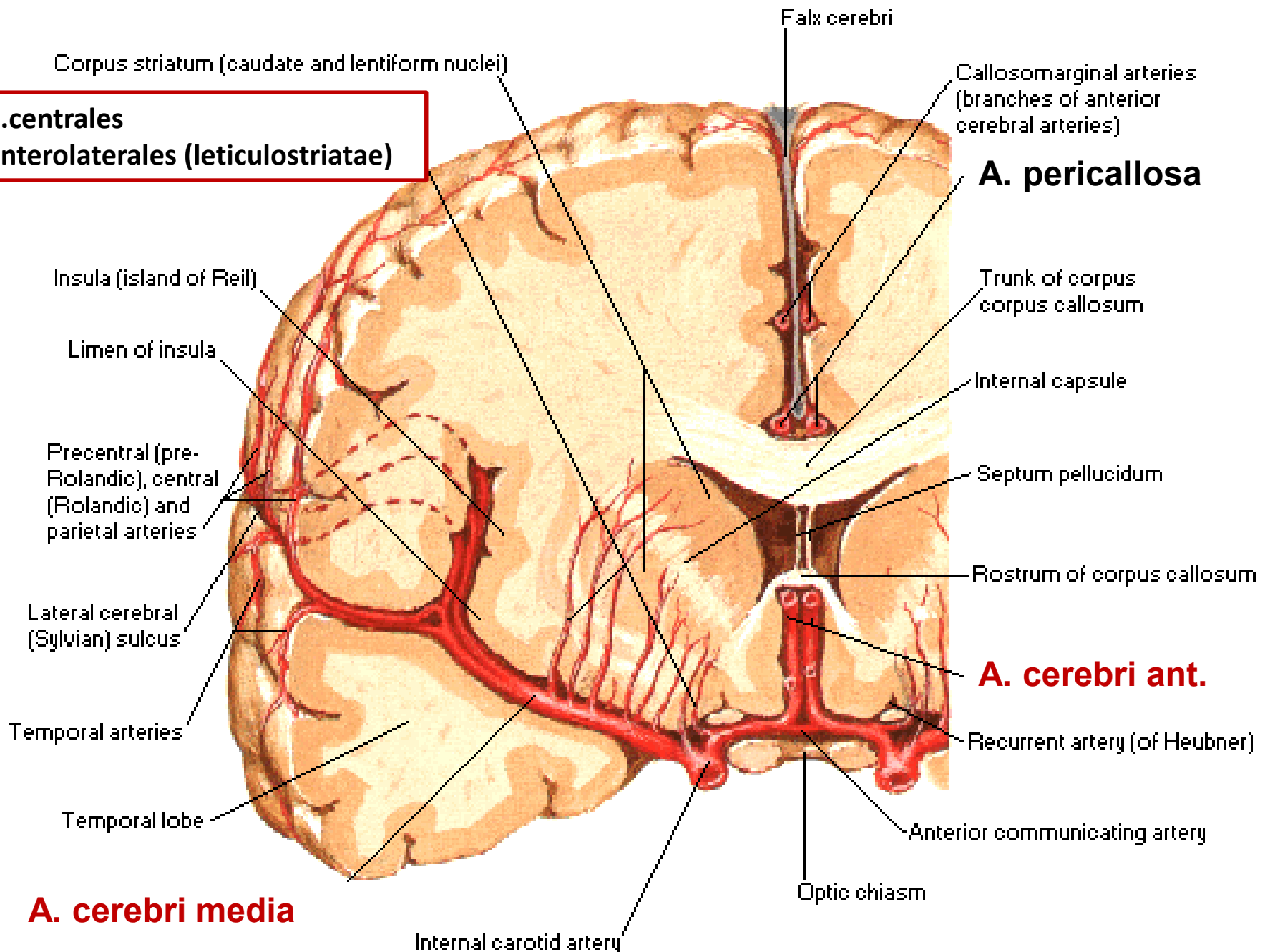
A. cerebri ant.



A. cerebri media

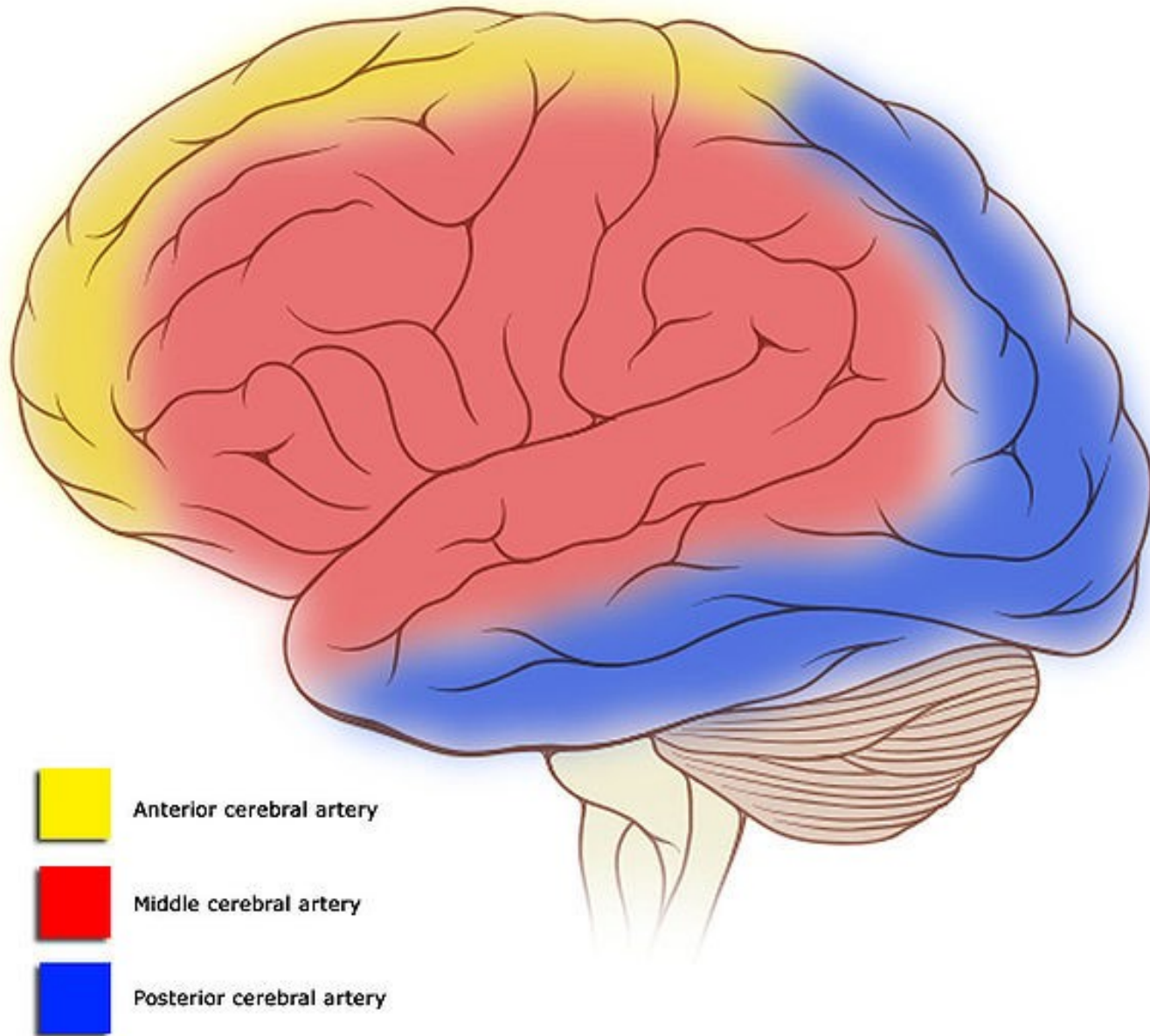


**a.centrales
anterolaterales (leticulostriatæ)**

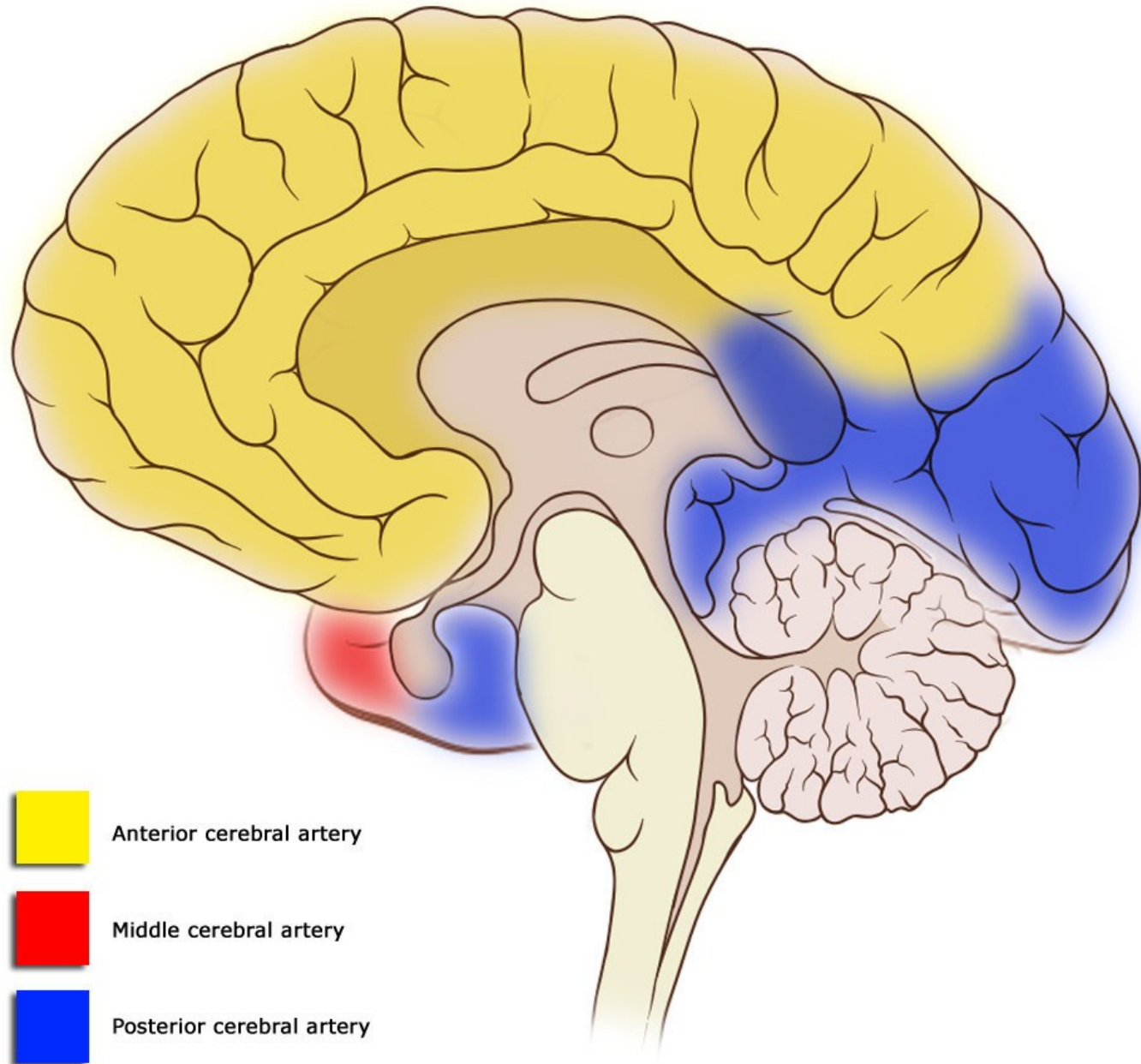


A. cerebri media

Cortical vascular territories



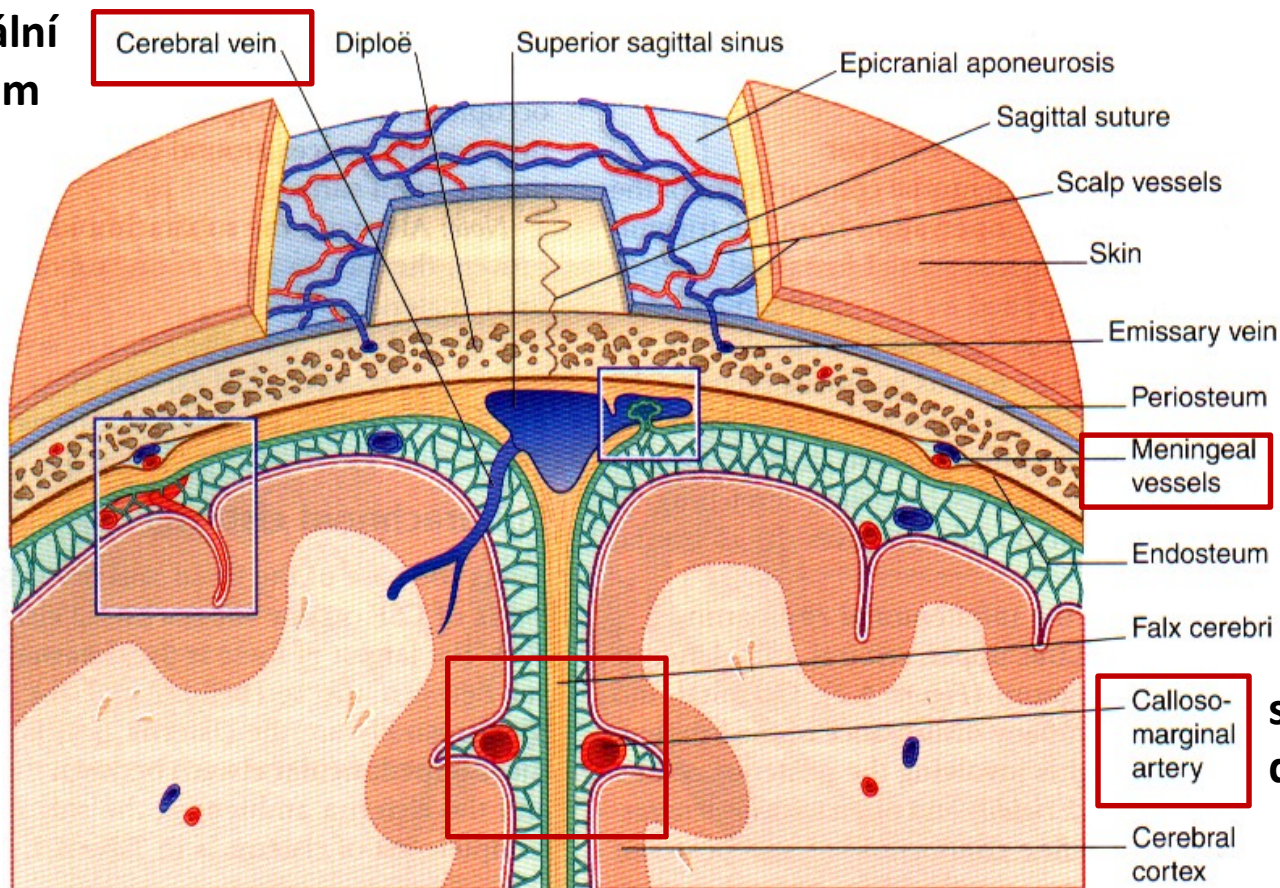
Cortical vascular territories



Krvácení

subdurální
hematom

A



epidurální
hematom

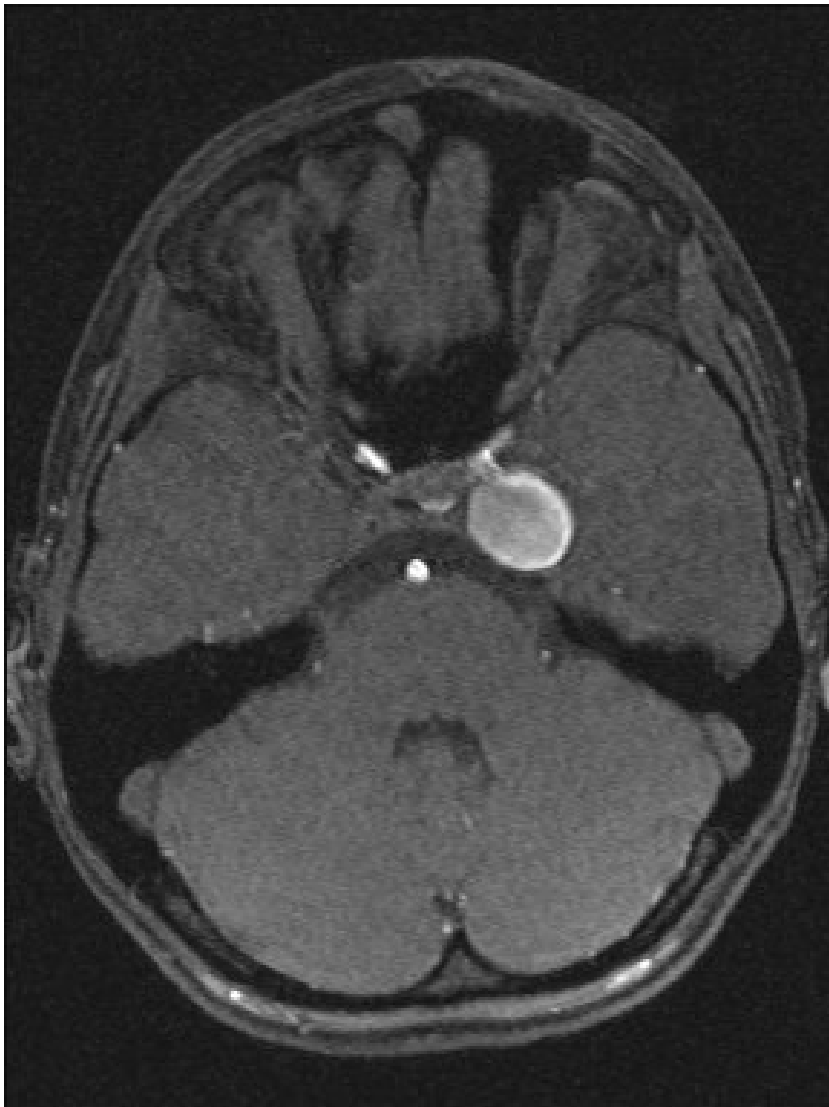
subarachnoi-
deální krvácení

epidurální hematom – do potencionálního epidurálního prostoru při traumatu hlavy, krvácení z r. anterior nebo posterior z *a. meningeae media*

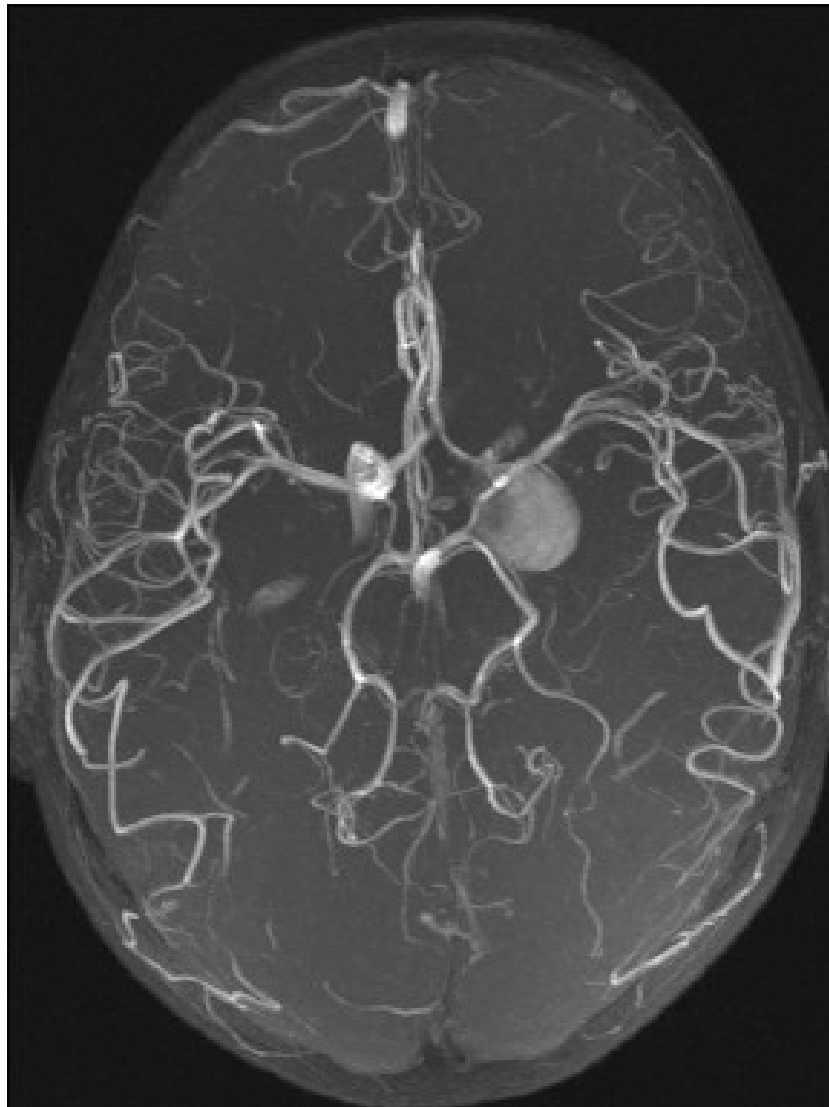
subdurální hematom – vzniká z povrchových cerebrálních vén, které procházejí do sinus sagittalis sup.

subarachnoideální krvácení - krvácení z cév z tepen Willisova okruhu - nejčastěji po prasknutí cévní výdutě (aneuryzmatu)

Cévní zásobení mozku - aneurizma



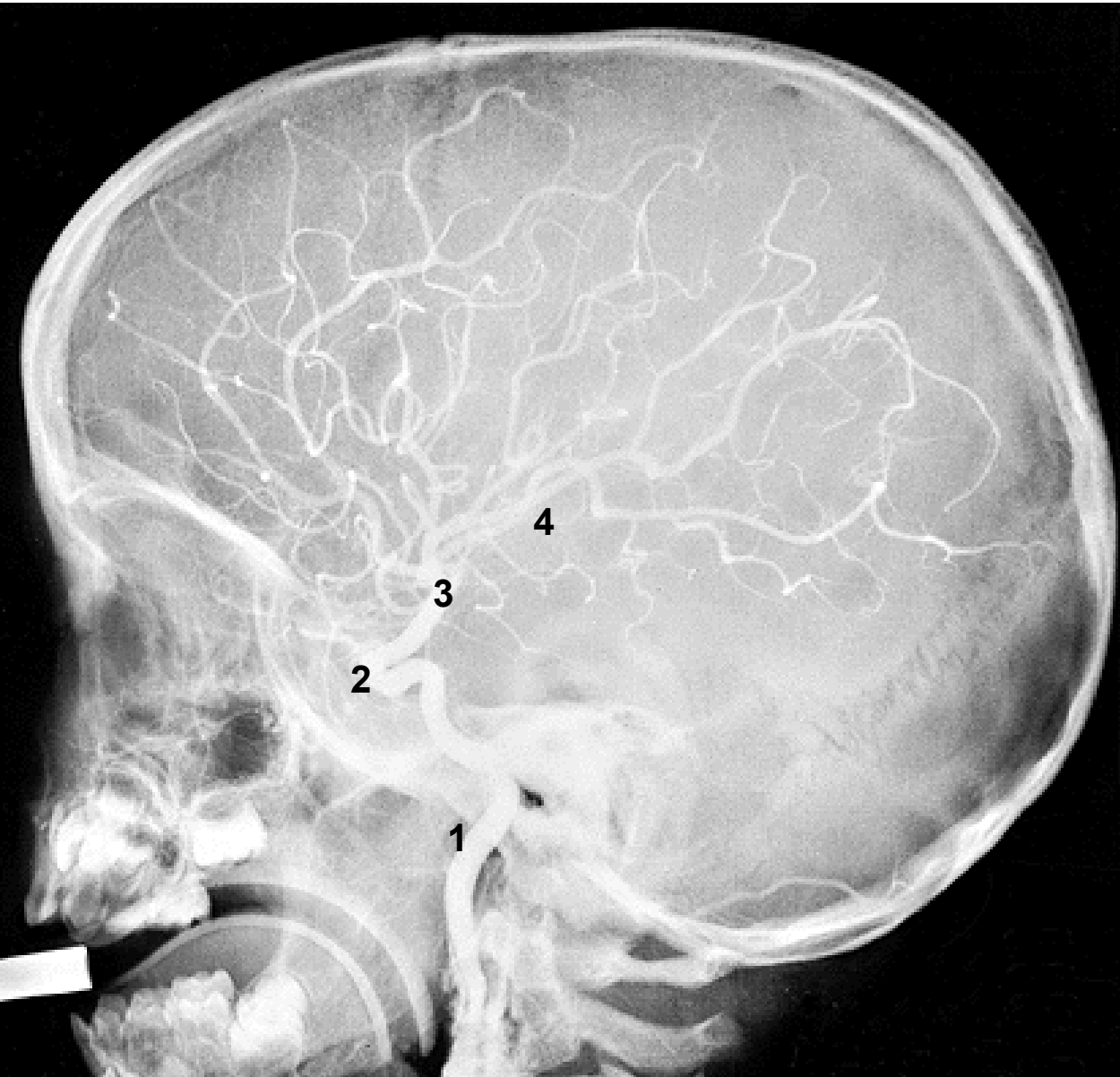
MR angiografie (MRA)



CT angiografie (CTA)

RTG snímek hlavy dítěte v boční projekci

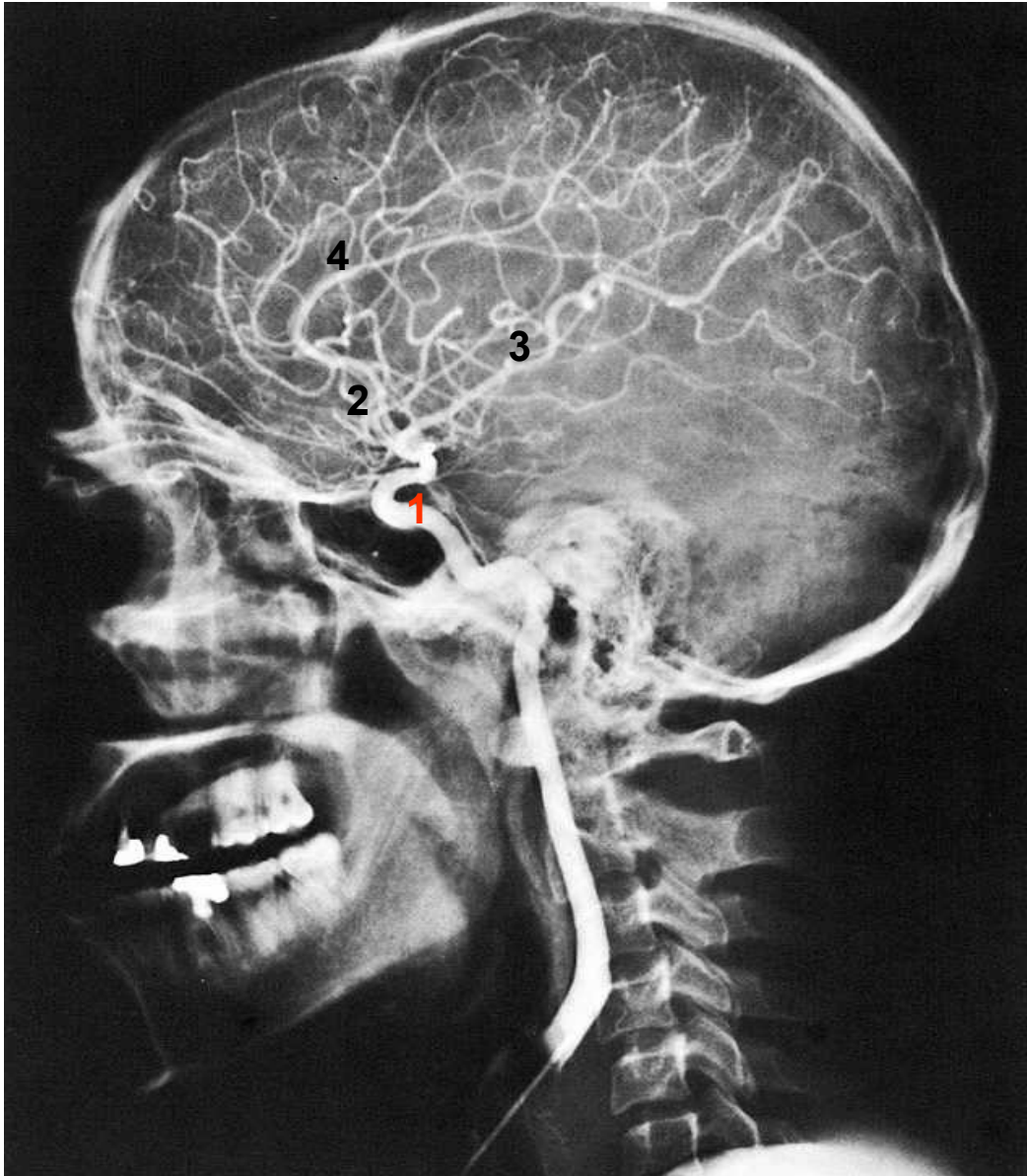
Angiografie = kontrastní vyšetření mozkových cév, větvení a. carotis interna



1. A. carotis interna
2. Karotický sifon
3. A. cerebri anterior
4. A. cerebri media

RTG snímek hlavy v boční projekci

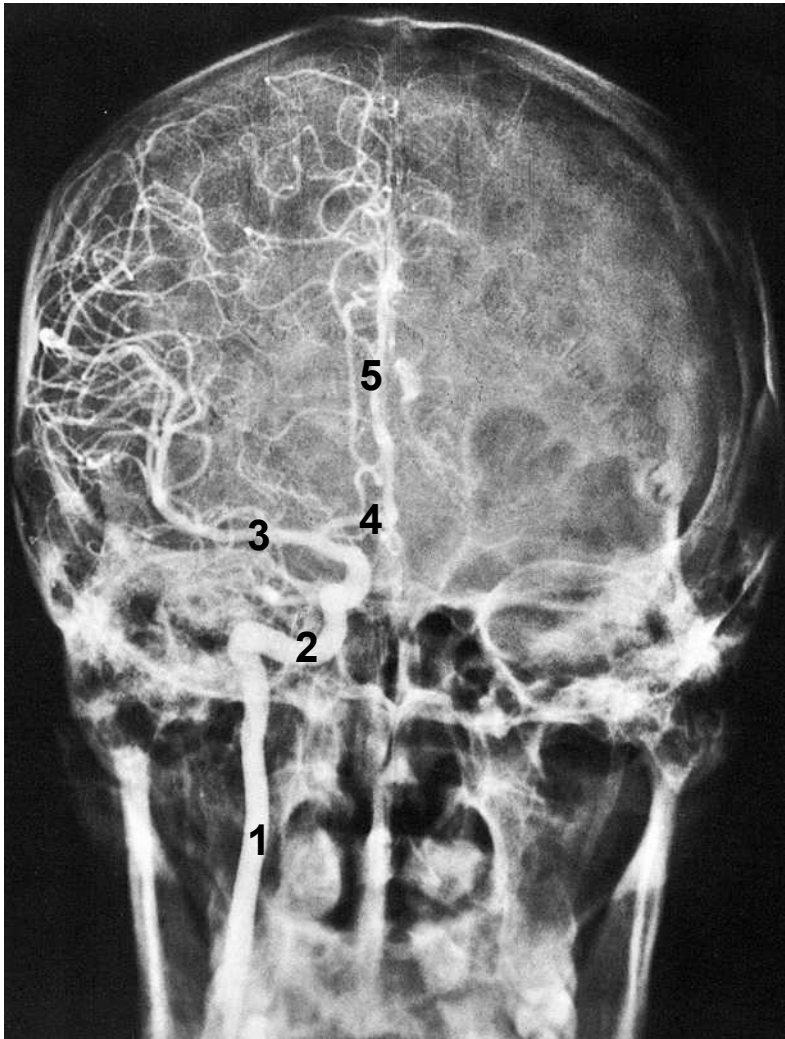
Angiografie - větvení a.carotis interna



1. karotický sifon
2. a.cerebri anterior
3. a.cerebri media
4. a.pericallosa

RTG snímek hlavy v předozadní projekci

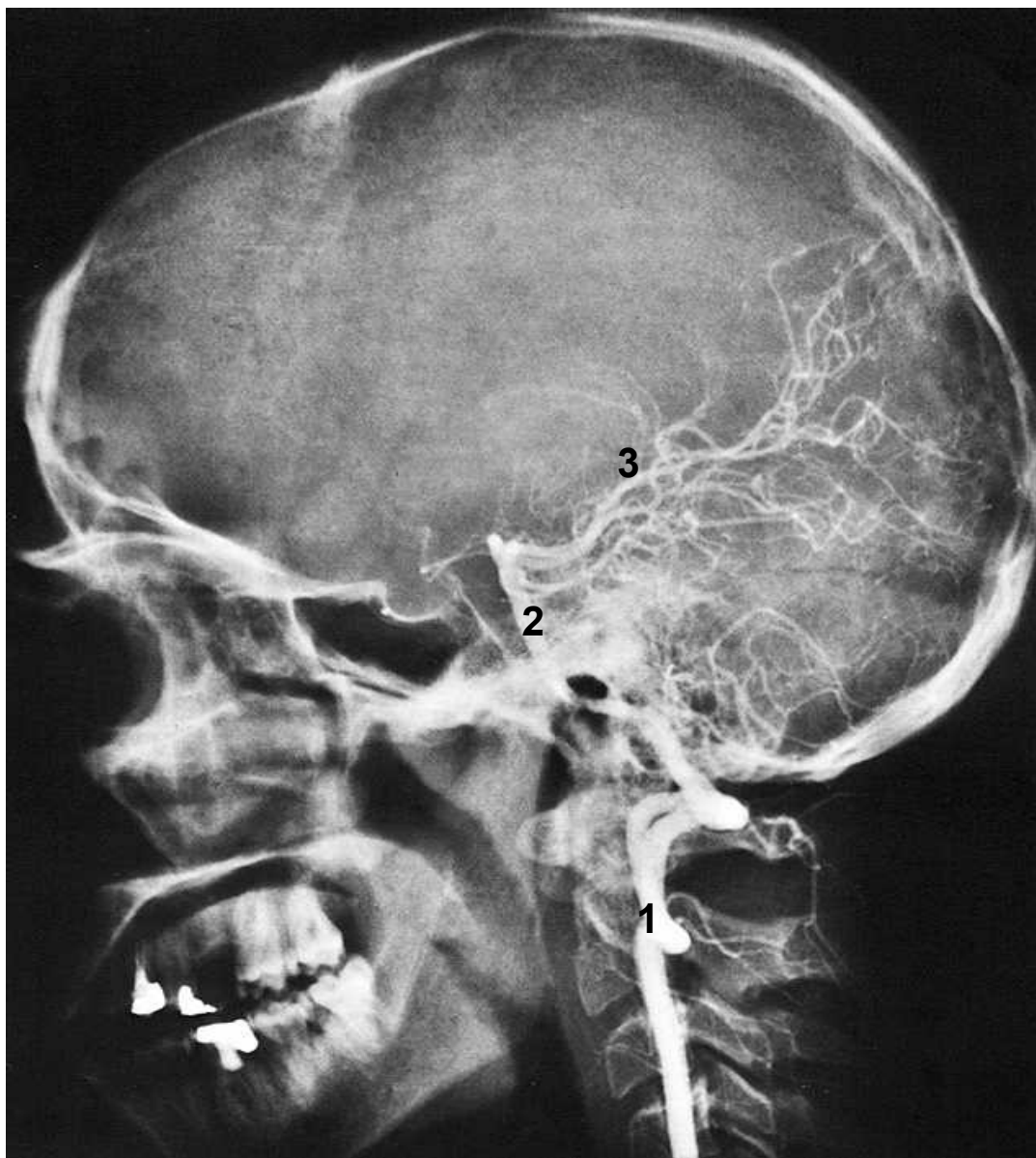
Angiografie - větvení a. carotis interna



1. a.carotis interna
2. karotický sifon
3. a.cerebri media
4. a.cerebri anterior
5. a.percallosa

RTG snímek hlavy v boční projekci

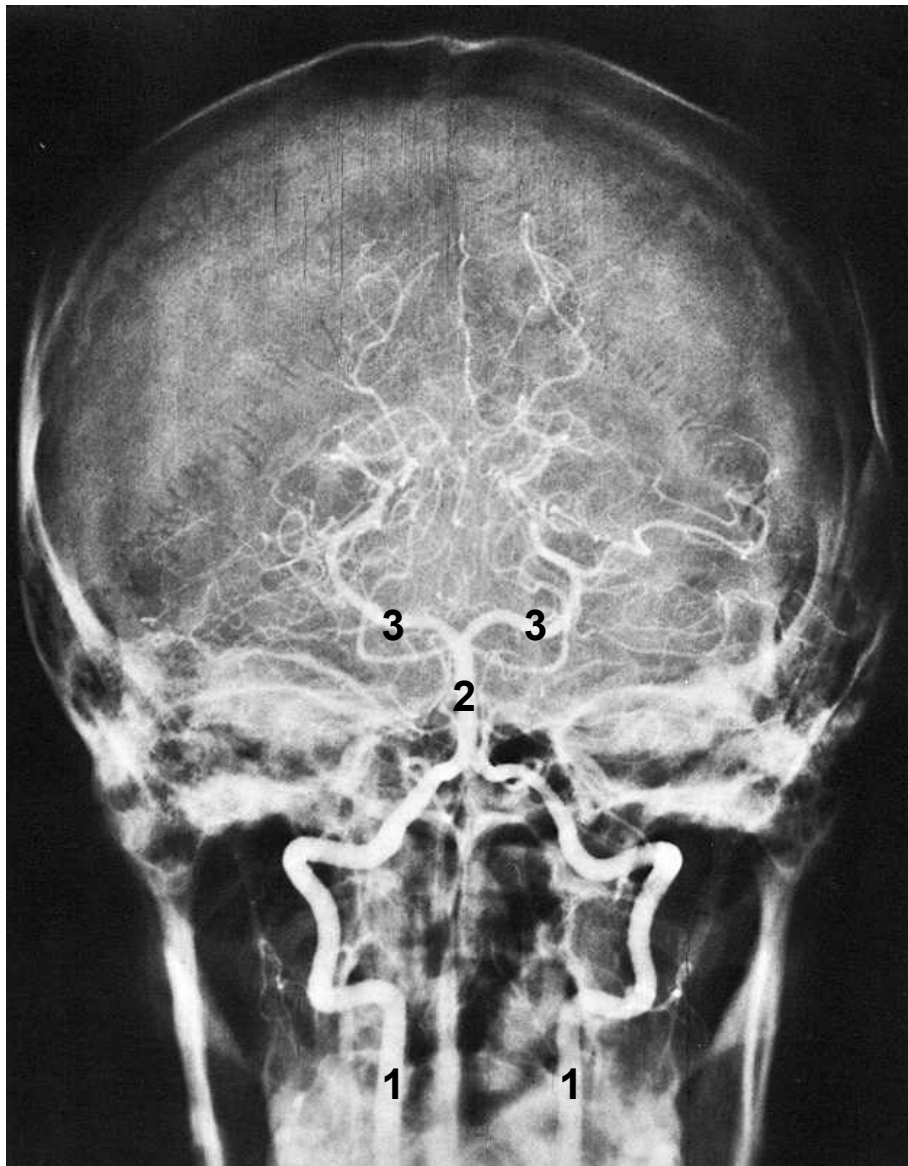
Angiografie - větvení a. vertebralis



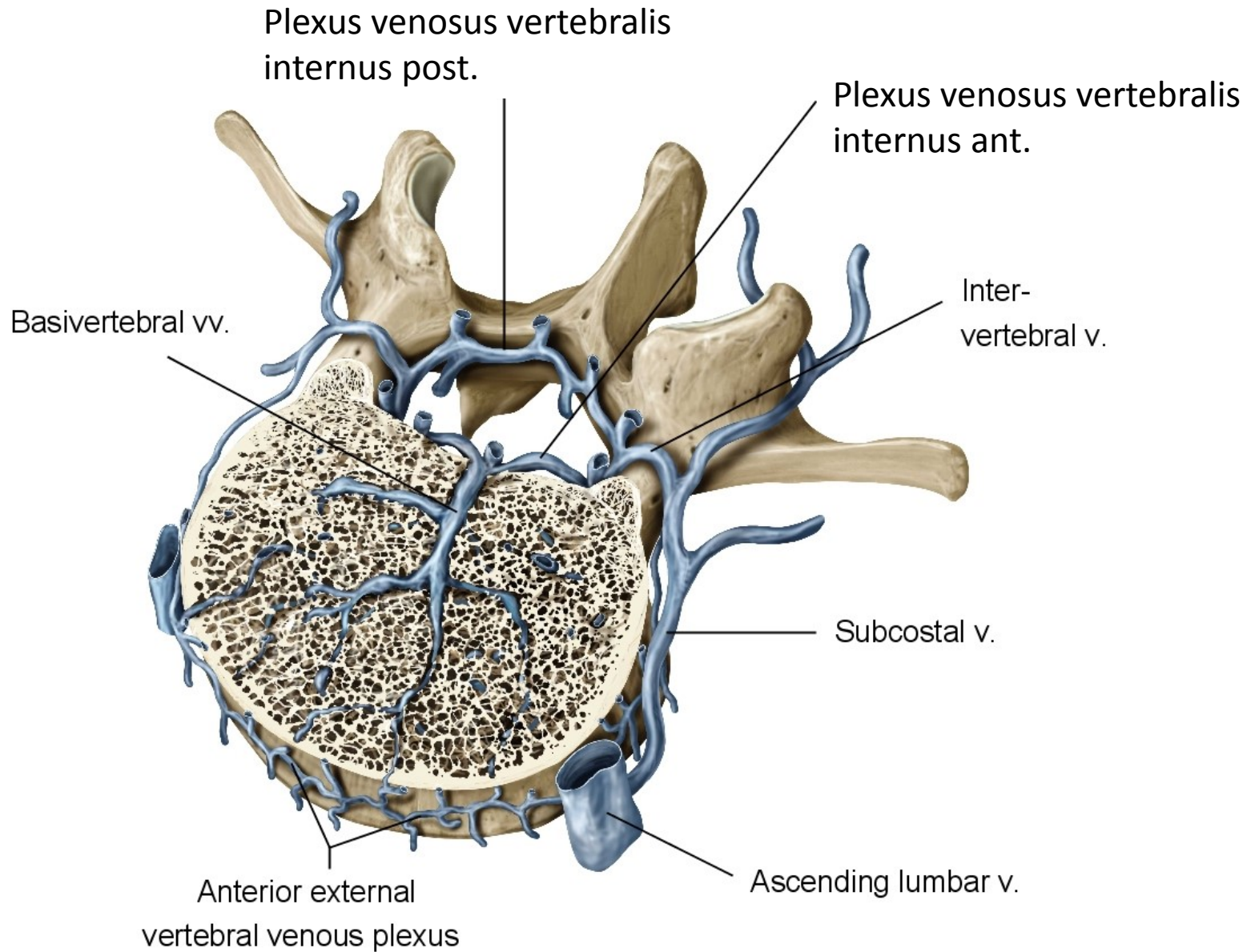
1. A.vertebralis
2. A.basilaris
3. A.cerebri posterior

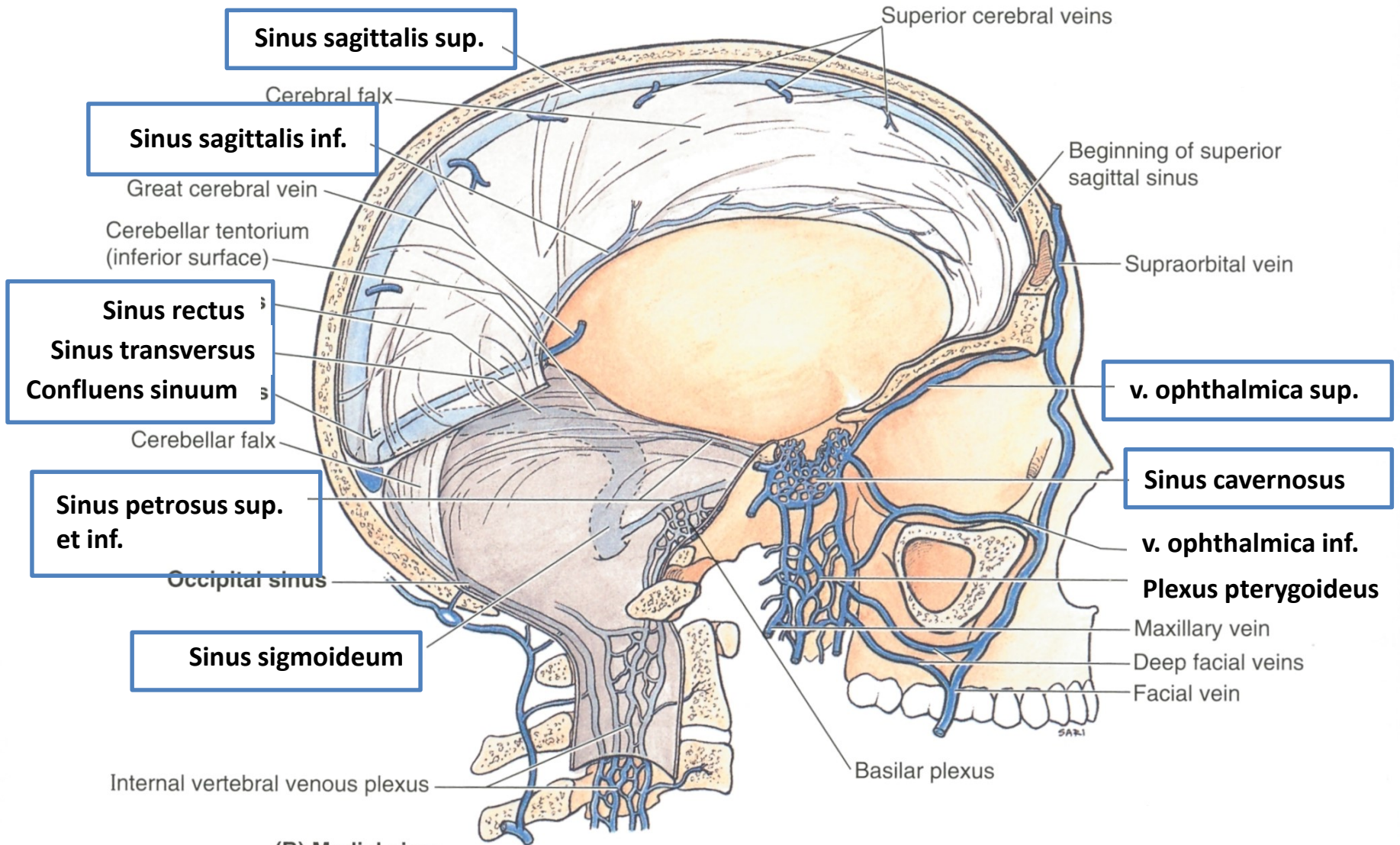
RTG snímek hlavy v předozadní projekci

Angiografie - větvení a.vertebralis

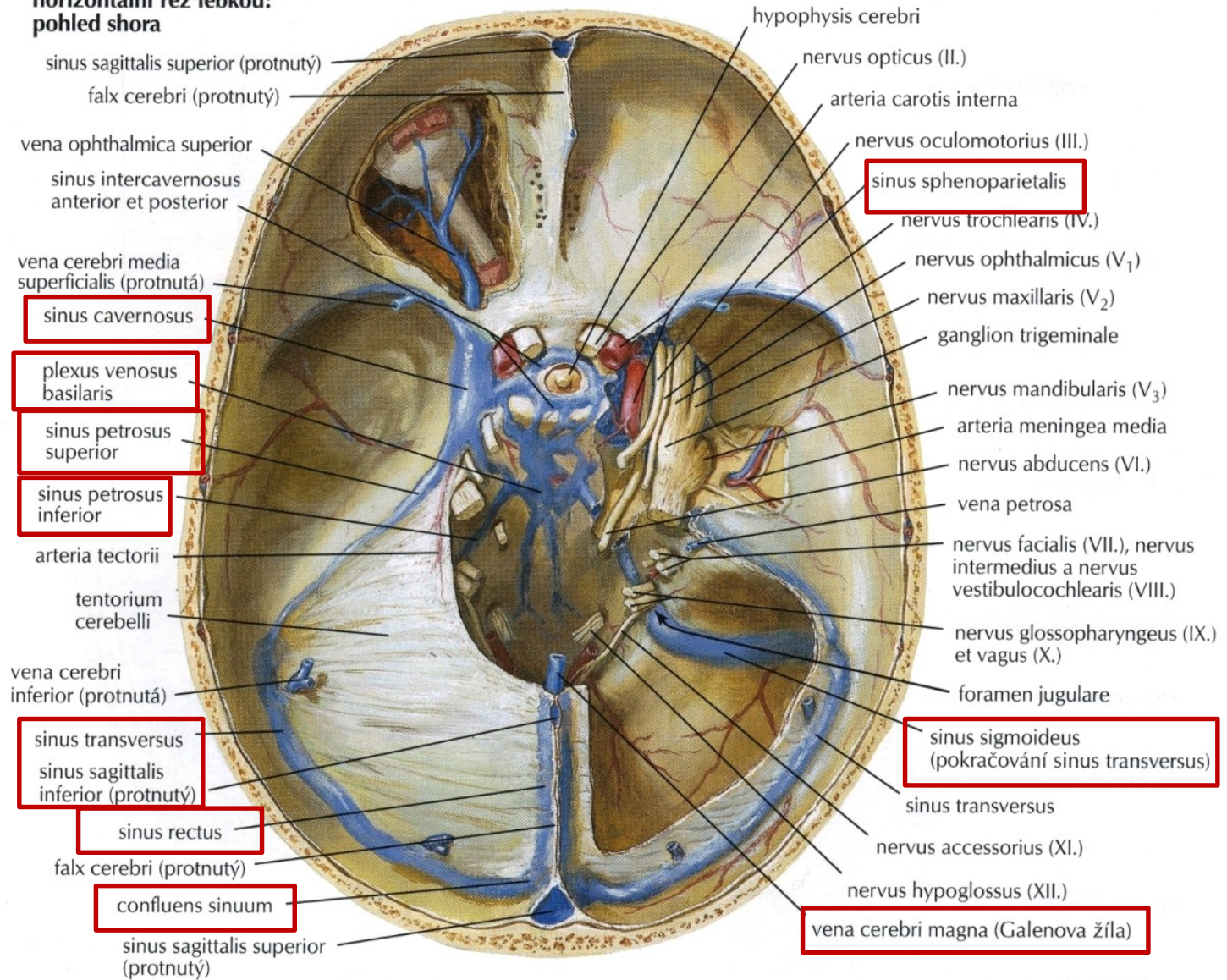


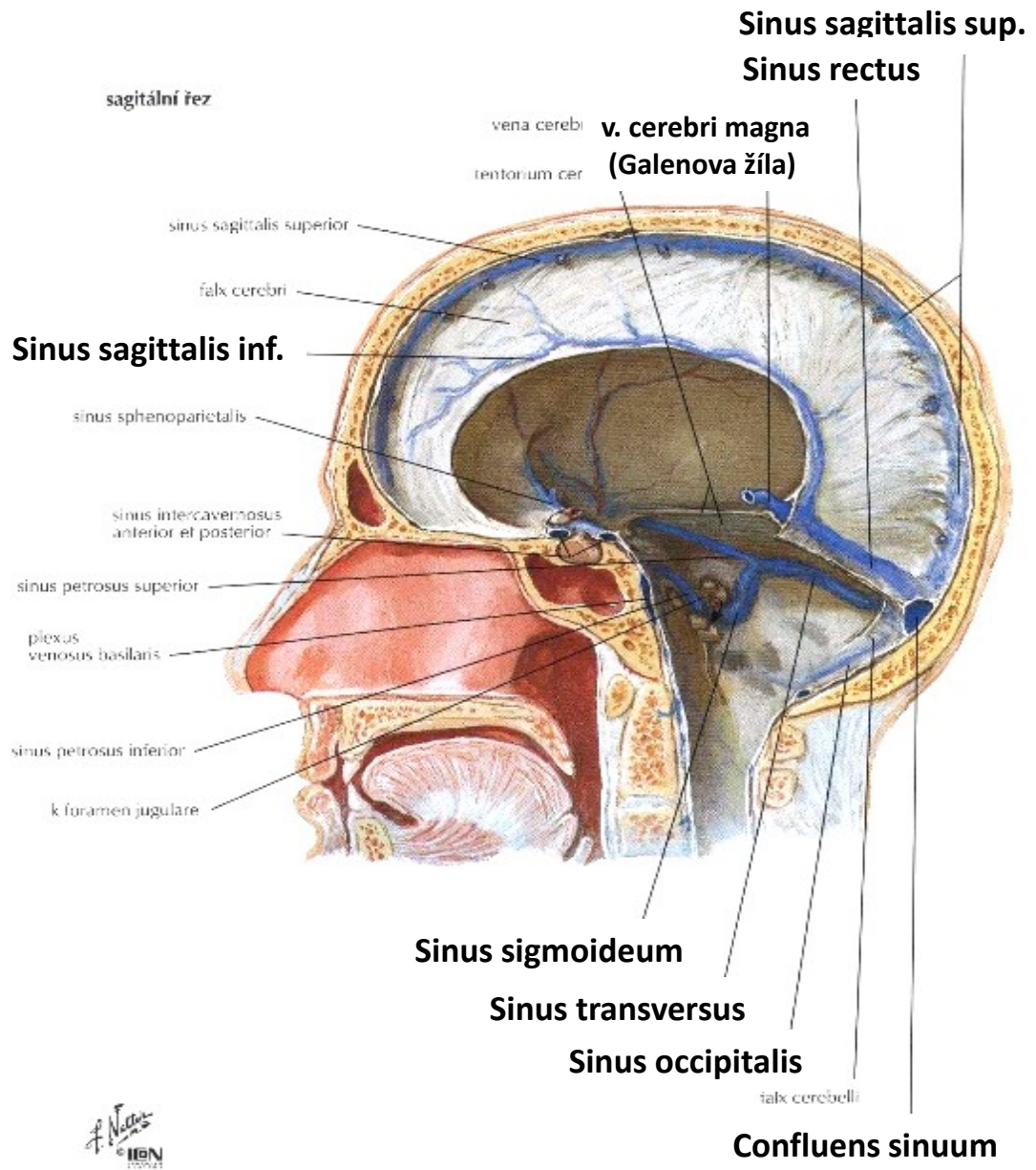
1. A.vertebralis dextra, sinistra
2. A.basilaris
3. Aa.cerebri posteriores

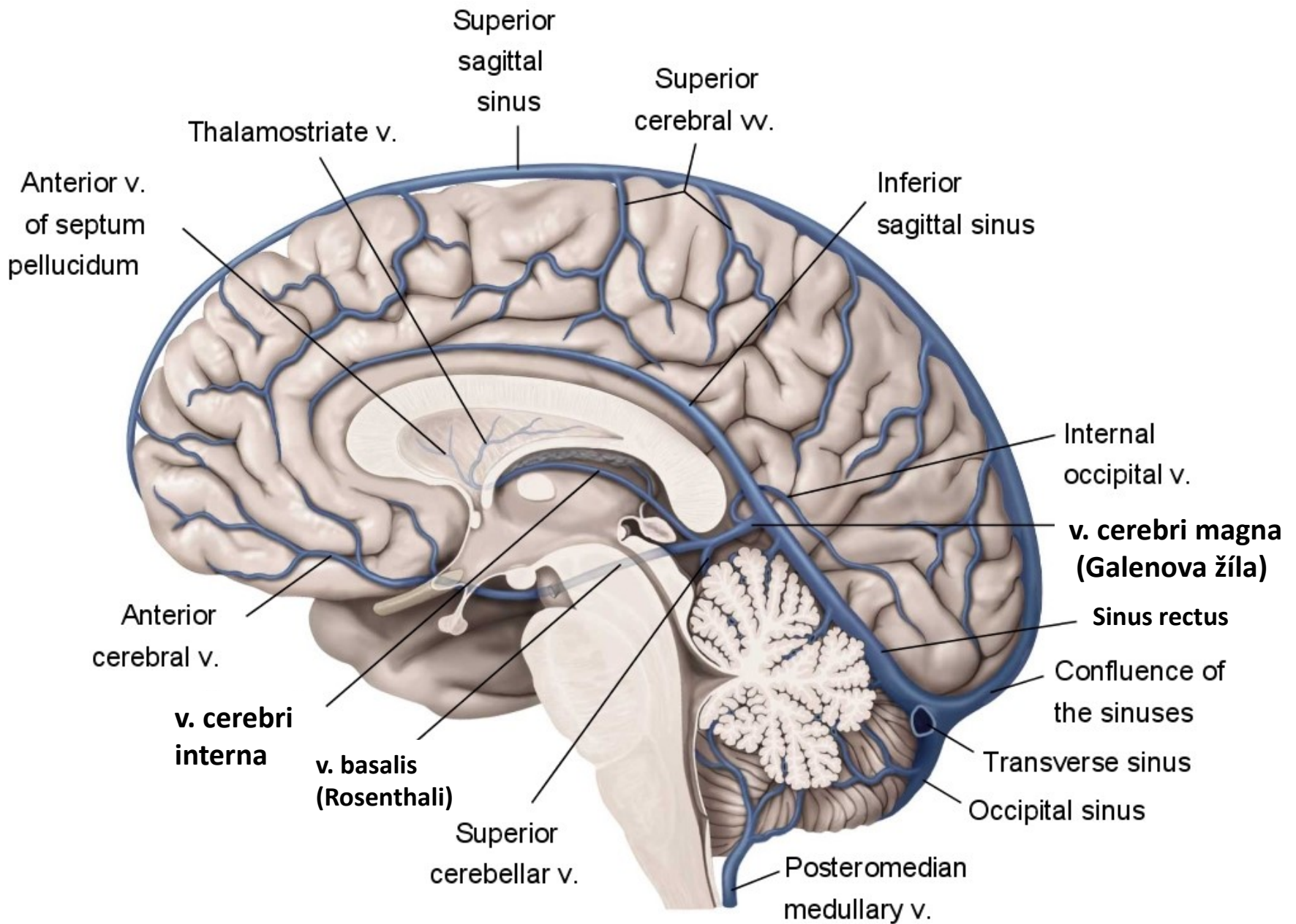




**horizontální řez lebkou:
pohled shora**

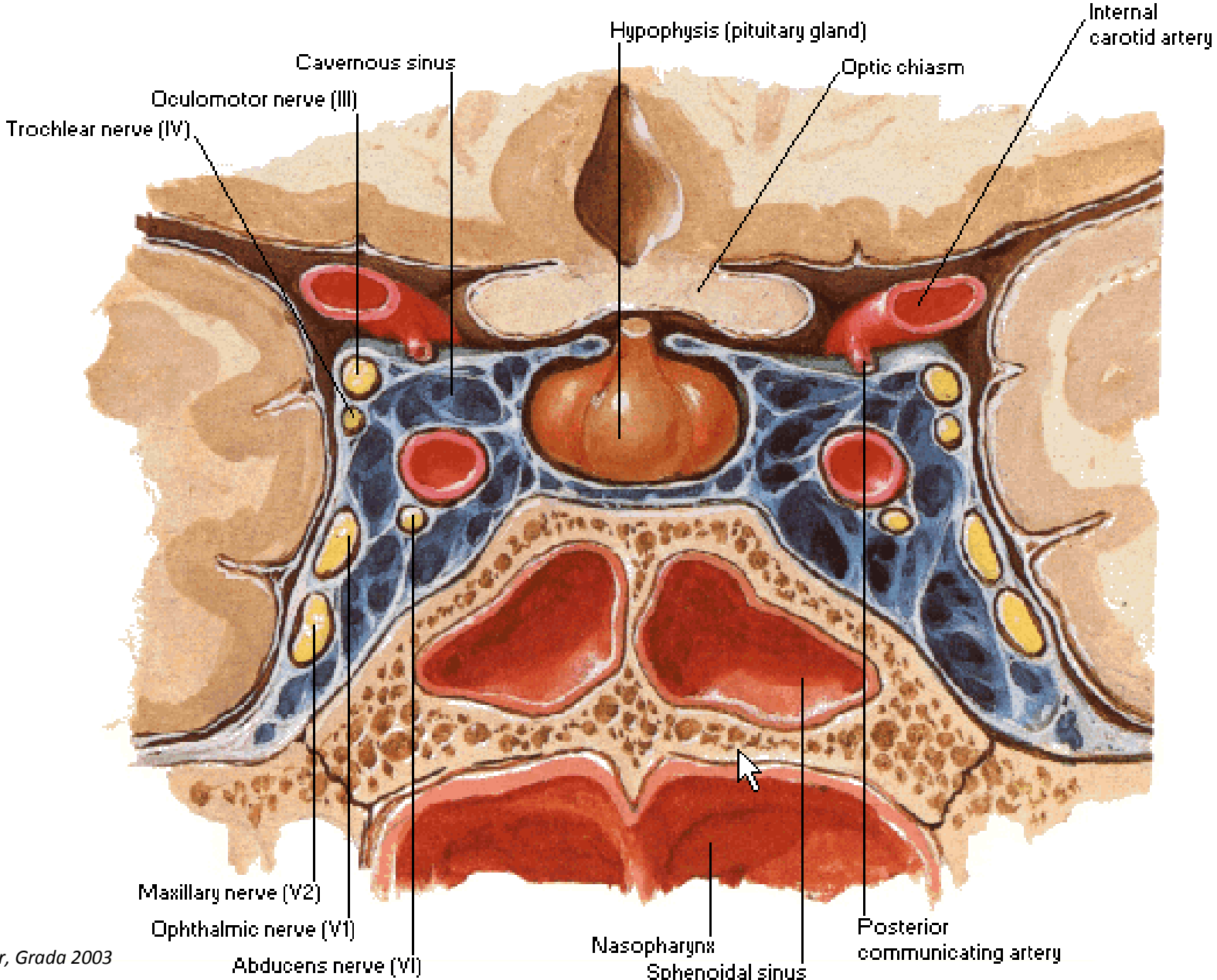






Cavernous Sinus

Coronal Section



Foramen parietale a emisarius

