

## SKELETON OF THE LOWER EXTREMITY

(ossa membri inferioris)

## Lower extremity

- organ of the locomotion
- more robust constitution than the upper extremity
- limited range of movements
- posture – centroid  $S_2$
- pelvis and the vertebral column – functional unit
- the most developmental changes - foot

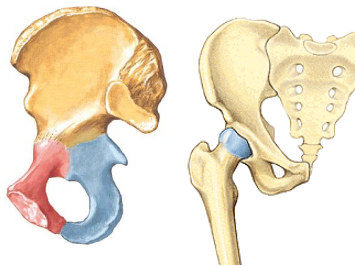


## Skeleton of the pelvic girdle

(Cingulum membri inferioris)

Os coxae (hip bone)

- os ilium
- os ischii
- os pubis



## Skeleton of the free extremity

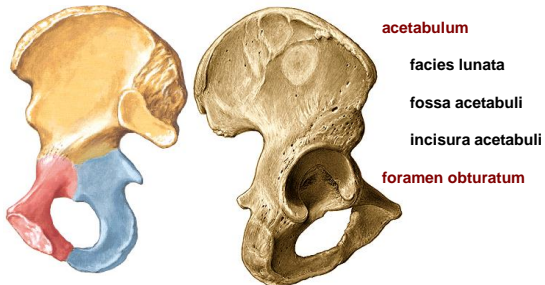
(Ossa membri inferioris liberi)

- Femur
- Patella
- Tibia
- Fibula
- Ossa tarsi
- Ossa metatarsi
- Ossa digitorum pedis, phalanges



## Os coxae (hip bone)

(os ilium, os pubis, os ischii)

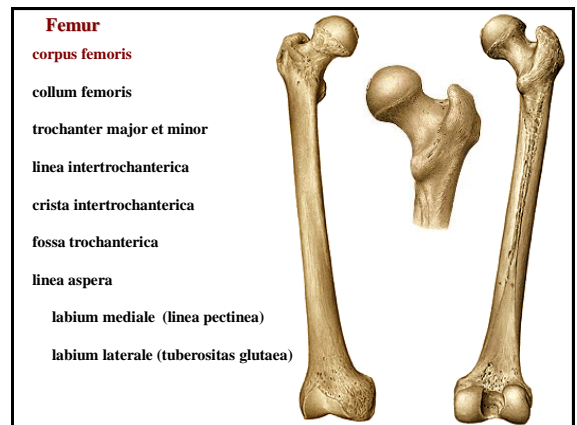
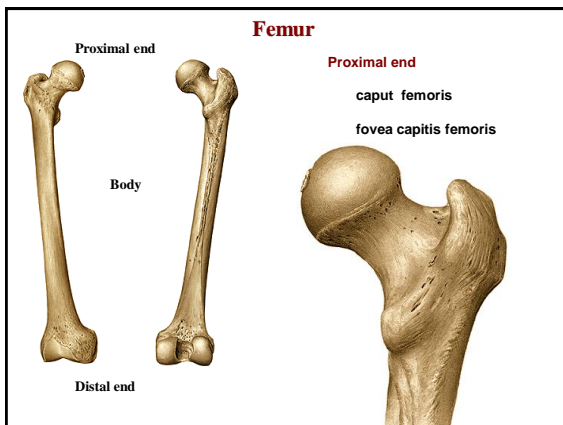
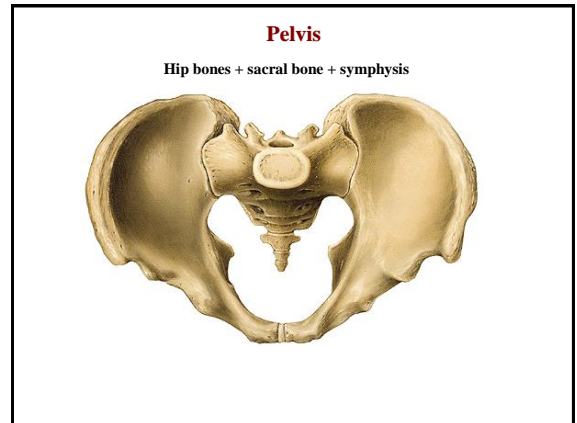
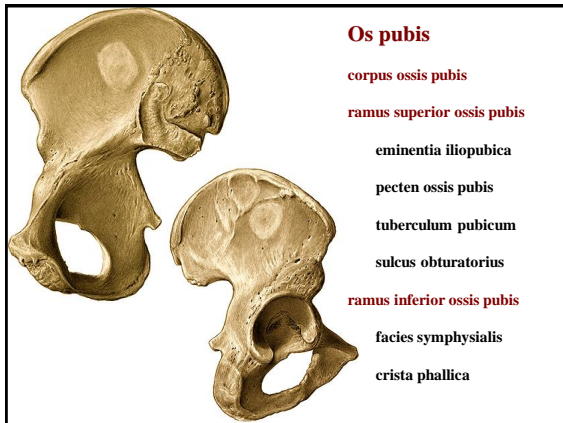
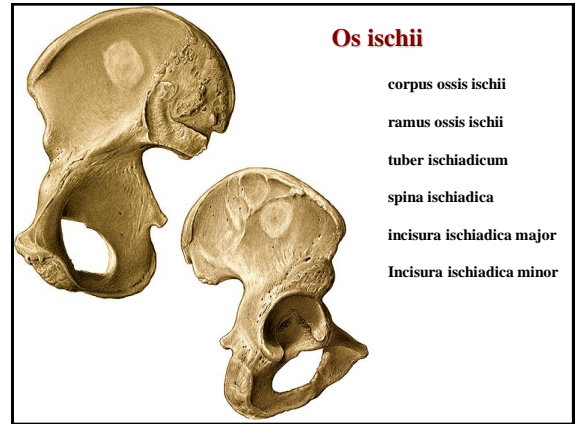
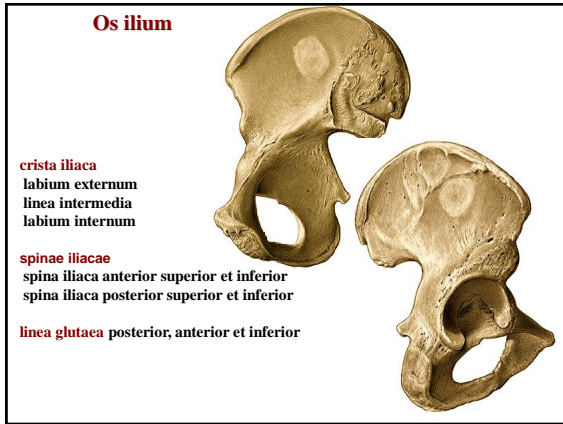


- acetabulum
- facies lunata
- fossa acetabuli
- incisura acetabuli
- foramen obturatum

## Os ilium


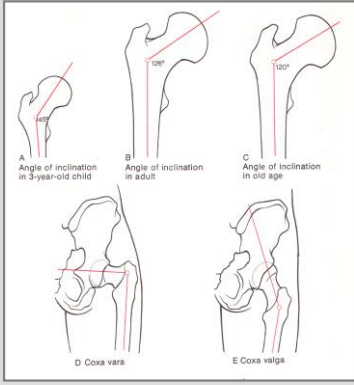
- corpus ossis ilii
- ala ossis ilii
- fossa iliaca
- facies auricularis
- tuberositas iliaca
- linea arcuata
- sulcus praeauricularis





**Distal end**

- condylus medialis
- condylus lateralis
- epicondylus medialis
- epicondylus lateralis
- facies patellaris
- fossa intercondylaris
- linea intercondylaris
- facies poplitea (planum popliteum)

A Angle of inclination in 3-year-old child

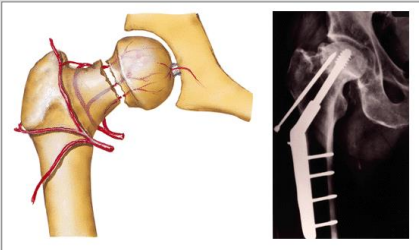
B Angle of inclination in adult

C Angle of inclination in old age

D Coxa vara

E Coxa valga

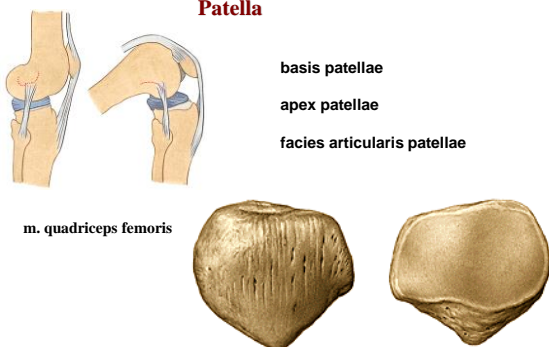
**Femoral head fracture**



**Patella**

- basis patellae
- apex patellae
- facies articularis patellae

m. quadriceps femoris

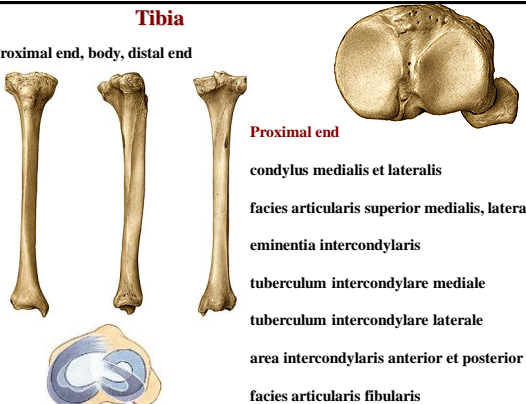


**Tibia**

Proximal end, body, distal end

**Proximal end**


- condylus medialis et lateralis
- facies articularis superior medialis, lateralis
- eminentia intercondylaris
- tuberculum intercondylare mediale
- tuberculum intercondylare laterale
- area intercondylaris anterior et posterior
- facies articularis fibularis

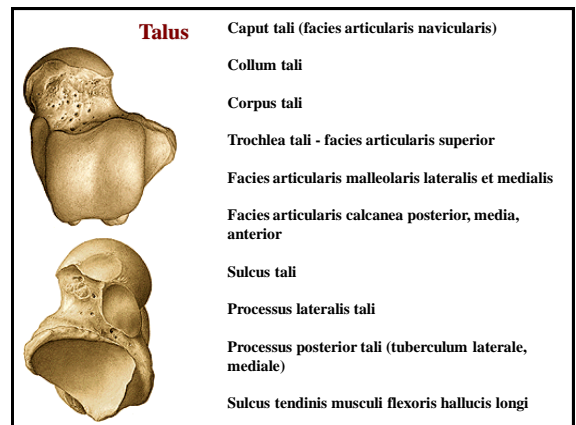
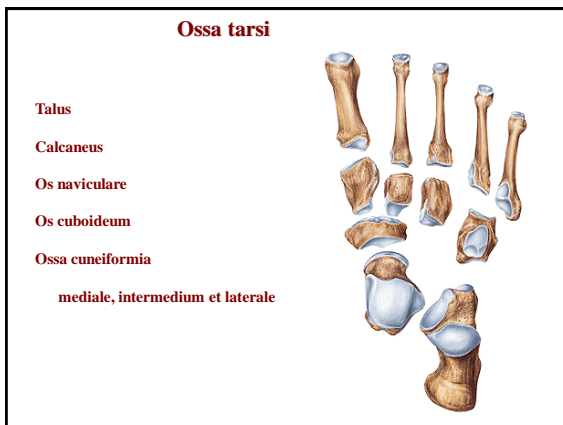
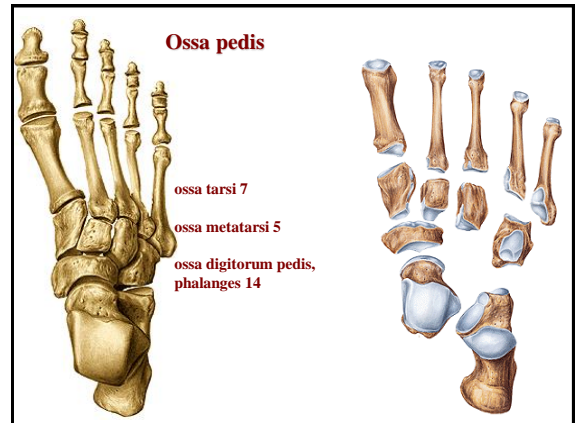
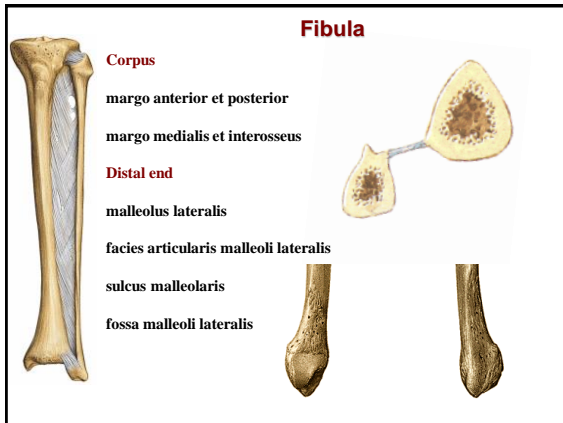
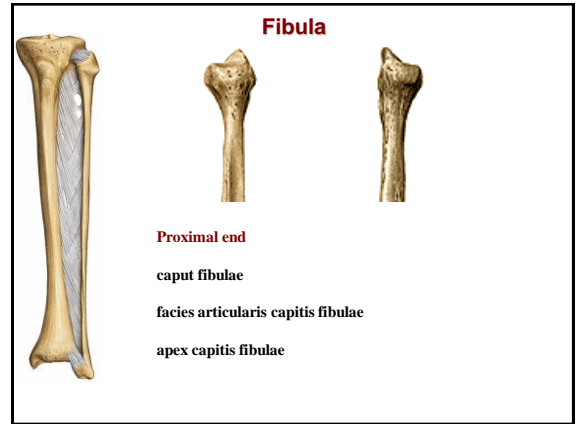
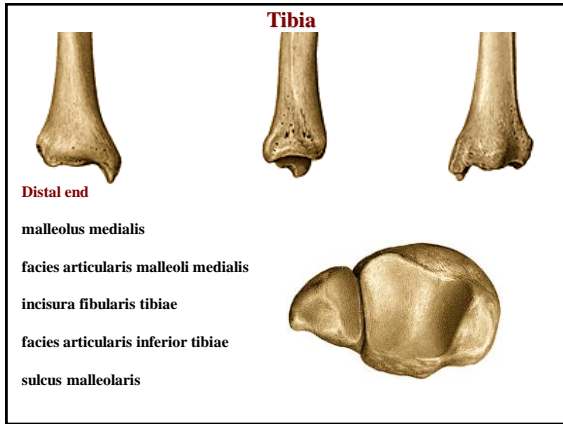


**Tibia**

**Corpus**

- tuberositas tibiae
- linea musculi solei
- margo medialis
- margo anterior
- margo interosseus







**Calcaneus**

tuber calcanei (processus medialis et lateralis)

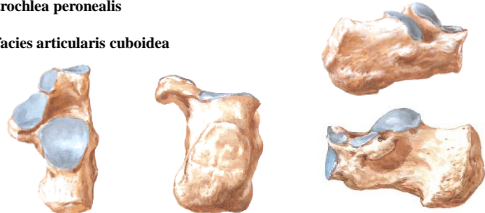
facies articularis talaris posterior, media et anterior

sulcus calcanei (sulcus calcanei + sulcus tali = sinus tarsi)

sustentaculum tali (sulcus tendinis musculi flexoris hallucis longi)

trochlea peronealis

facies articularis cuboidea



**Os naviculare**

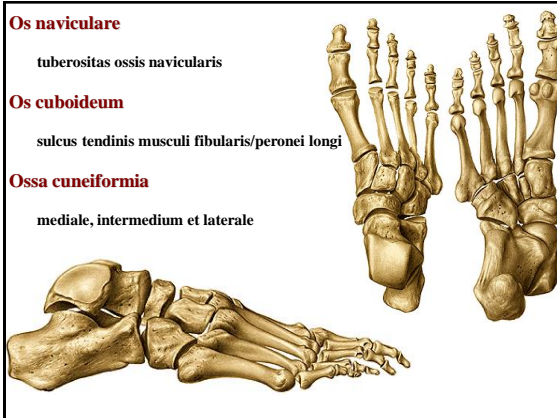
tuberositas ossis navicularis

**Os cuboideum**

sulcus tendinis musculi fibularis/peronei longi

**Ossa cuneiformia**

mediale, intermedium et laterale



**Ossa metatarsi I. – V.**



basis  
(tuberositas ossis metatarsi I. et V.)  
corpus  
caput

**Ossa digitorum pedis, phalanges - kosti prstů nohy**

palec – phalanx proximalis et distalis

II. – V. prst – phalanx proximalis, media et distalis

basis phalanges

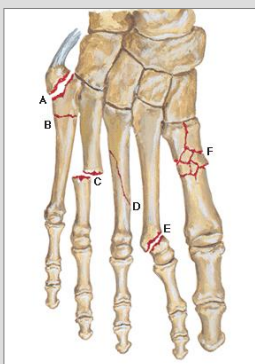
corpus phalanges

corpus/trochlea

tuberositas phalanges distalis



**Metatarsal fractures**



**X-Ray of the pelvis**



**X-ray of the children pelvis****X-ray of the knee****X-ray of the ankle****X-ray of the foot****References**

Putz, R. (2008):

Atlas of Human Anatomy Sobotta. Elsevier Books.

Keith L. Moore, Arthur F. Dalley (2005):

Clinically Oriented Anatomy. Williams and Wilkins.

Platzer, W., Kahle, W., Leonhardt H. (1992):

Locomotor system. Georg Thieme Verlag, Stuttgart, New York, 4th edition.

Čihák, R. (1987): Anatomie 1. Avicenum, Zdravotnické nakladatelství.