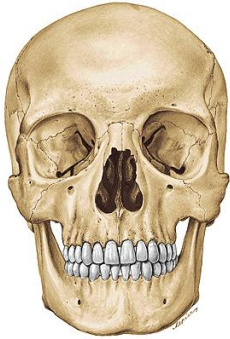


SPLANCHNOCRANIUM



Splanchnocranium

Os ethmoidale

Maxilla

Os nasale

Os lacrimale

Os zygomaticum

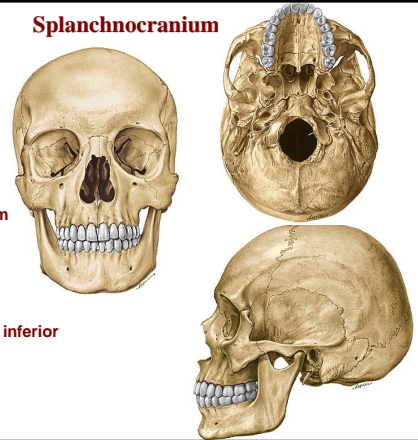
Vomer

Os palatinum

Concha nasalis inferior

Mandibula

Os hyoideum

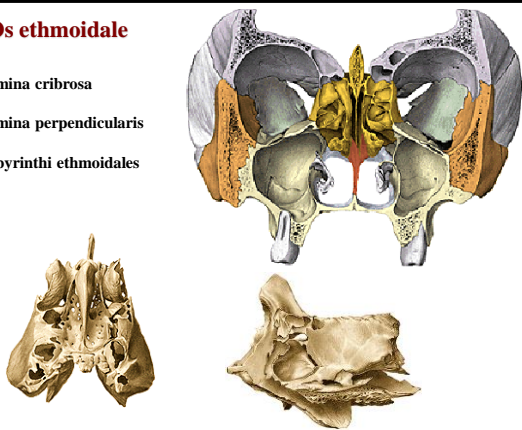


Os ethmoidale

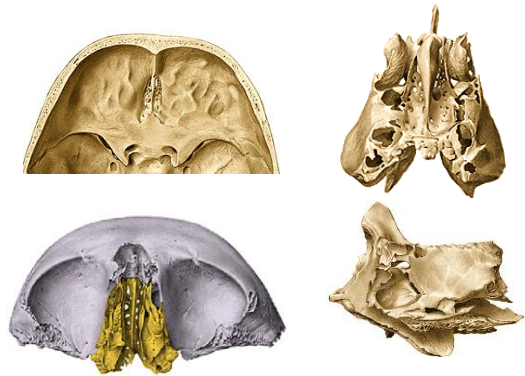
lamina cribrosa

lamina perpendicularis

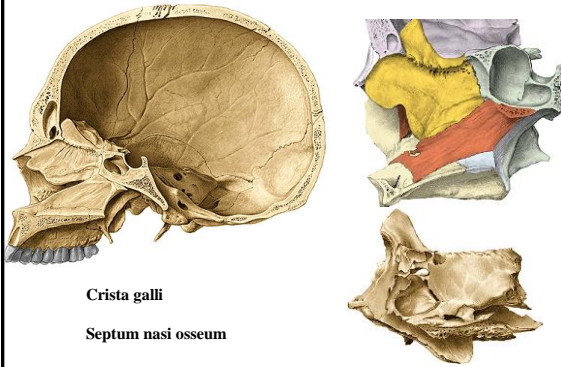
labirynthi ethmoidales



Lamina cribrosa ossis ethmoidalis

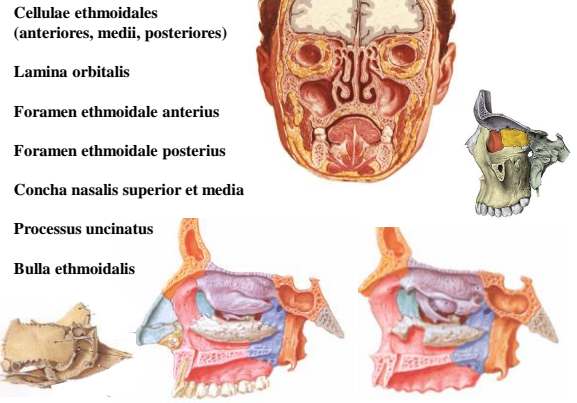


Lamina perpendicularis ossis ethmoidalis



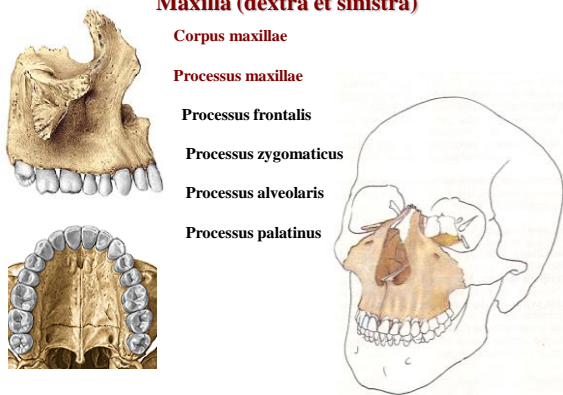
Crista galli
Septum nasi osseum

Labyrinthi ethmoidales



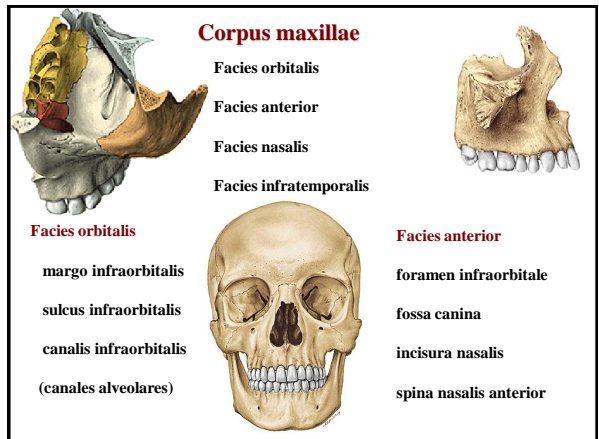
Cellulae ethmoidales
(anteriores, medii, posteriores)
Lamina orbitalis
Foramen ethmoidale anterius
Foramen ethmoidale posterius
Concha nasalis superior et media
Processus uncinatus
Bulla ethmoidalis

Maxilla (dextra et sinistra)



Corpus maxillae
Processus maxillae
Processus frontalis
Processus zygomaticus
Processus alveolaris
Processus palatinus

Corpus maxillae



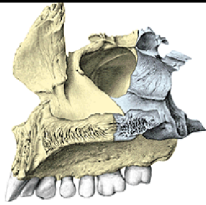
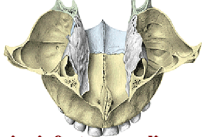
Facies orbitalis
Facies anterior
Facies nasalis
Facies infratemporalis
Facies orbitalis
margo infraorbitalis
sulcus infraorbitalis
canalis infraorbitalis
(canales alveolares)

Facies anterior
foramen infraorbitale
fossa canina
incisura nasalis
spina nasalis anterior

Facies nasalis corporis maxillae

sinus maxillaris

hiatus maxillaris (antrum Highmori)



Facies infratemporalis corporis maxillae

crista infrazygomatica

tuber maxillae

foramina et canales alveolares



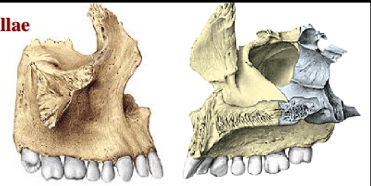
Processus frontalis maxillae

Incisura nasalis
(apertura piriformis)

Crista lacrymalis anterior

Crista ethmoidalis

Crista conchalis



Processus zygomaticus maxillae



Processus alveolaris maxillae

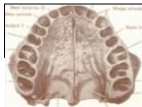
Arcus alveolaris

Alveoli dentales

Juga alveolaria

Septa interalveolaria

Septa intraalveolaria



Processus palatinus maxillae

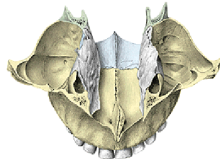
Os incisivum (praemaxilla)

Foramen incisivum

Canalis incisivus

Crista nasalis

Sutura palatina mediana



Mandible

Corpus mandibulae (basis mandibulae)

Ramus mandibulae dx. et sin.

Angulus mandibulae dx. et sin.



Corpus mandibulae

- Fossa digastrica
- Spina mentalis (sup. et inf.)
- Linea mylohyoidea
- Fovea sublingualis
- Fovea submandibularis
- Crista buccinatoria



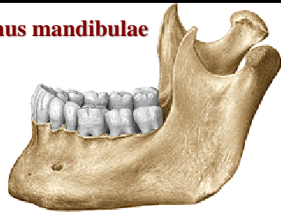
Corpus mandibulae

- Tuberculum mentale
- Protuberantia mentalis
- Foramen mentale
- Linea obliqua (trigonum retromolare)
- Pars alveolaris**
- Alveoli dentales, juga alveolaria
- Septa interalveolaria, intraalveolaria



Ramus mandibulae

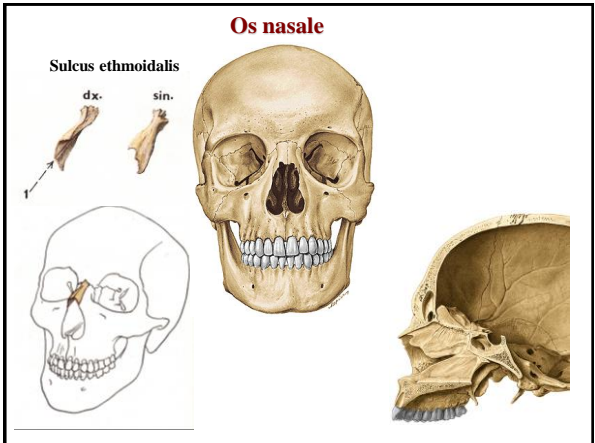
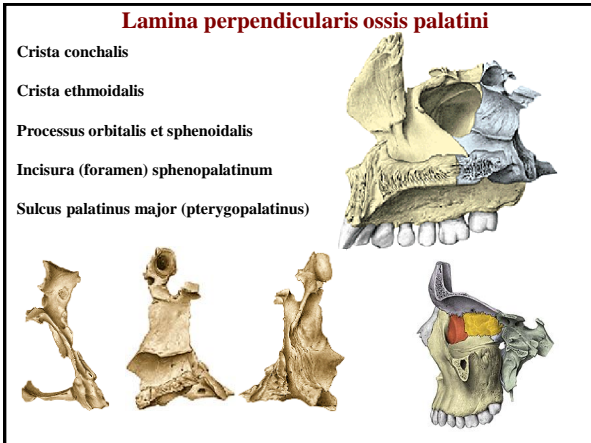
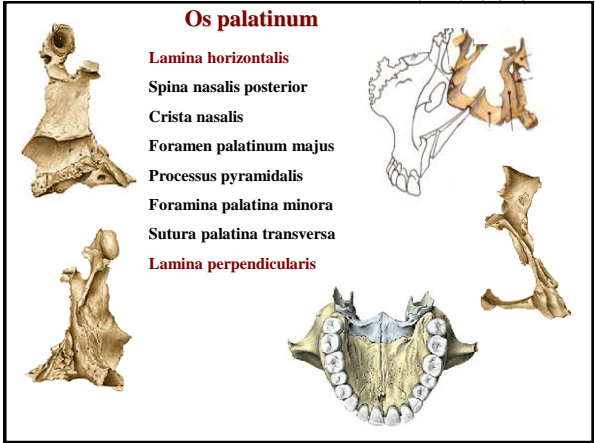
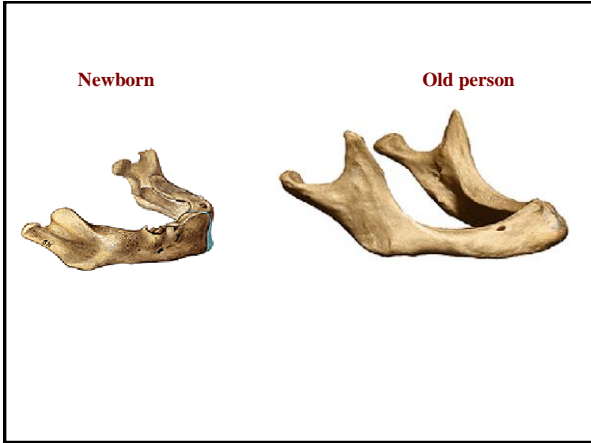
- Processus condylaris
- Caput mandibulae
- Collum mandibulae
- Fovea pterygoidea
- Processus coronoideus
- Incisura mandibulae
- Foramen mandibulae
- Canalis mandibulae
- Lingula mandibulae
- Sulcus mylohyoideus



Angulus mandibulae (120°-125°)

- Tuberositas masseterica
- Tuberositas pterygoidea





Os lacrimale

Crista lacrimalis posterior
 Sulcus lacrimalis
 Fossa sacci lacrimalis
 Canalis nasolacrimalis
 Hamulus lacrimalis

Os zygomaticum

Corpus

Facies lateralis - foramen zygomaticofaciale
 Facies orbitalis - foramen zygomaticoorbitale
 Facies temporalis - foramen zygomaticotemporale
Processus maxillaris, frontalis, zygomaticus
 Arcus zygomaticus

Vomer

Alae vomeris (rostrum ossis sphenoidalis)

Concha nasalis inferior

Processus maxillaris
 Processus lacrimalis
 Processus ethmoidalis

Proc. lacrimalis
 Proc. ethmoidalis
 Proc. maxillaris

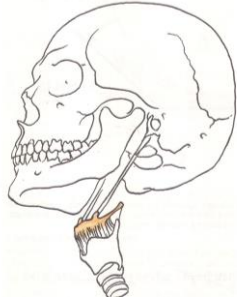
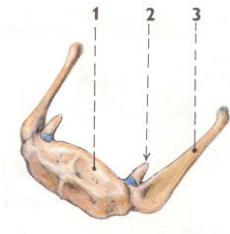
Proc. lacrimalis
 Proc. ethmoidalis

Os hyoideum

Corpus ossis hyoidei

Cornua minora ossis hyoidei

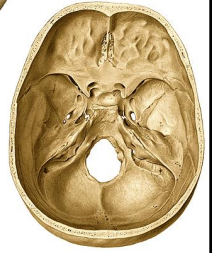
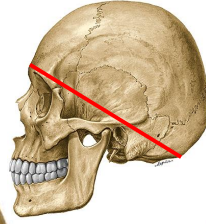
Cornua majora ossis hyoidei



Skull topography – fossae and cavities

Calvaria

Basis cranii



Calvaria



frons, vertex, occiput

sutura sagittalis, coronalis, lambdoidea, squamosa

tubera frontalia, parietalia

linea temporalis superior et inferior,

foramina parietalia

impressiones gyrorum

juga cerebrialia

sulci arteriosi,

sulcus sinus sagittalis superior

sulcus sinus transversi

foveolae granulares

Basis cranii

Basis cranii interna

Basis cranii externa

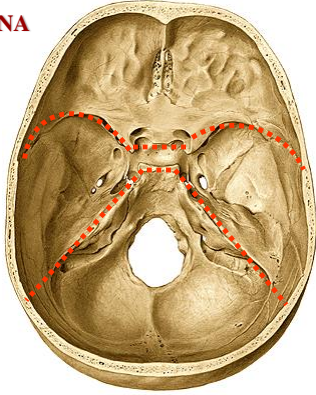


BASIS CRANII INTERNA

Fossa cranii anterior

Fossa cranii media

Fossa cranii posterior

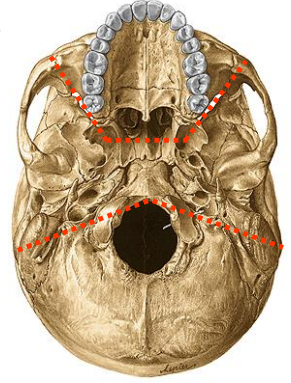


BASIS CRANII EXTERNA

Fossa cranii anterior

Fossa cranii media

Fossa cranii posterior



FOSSAE CRANII

FOSSA TEMPORALIS

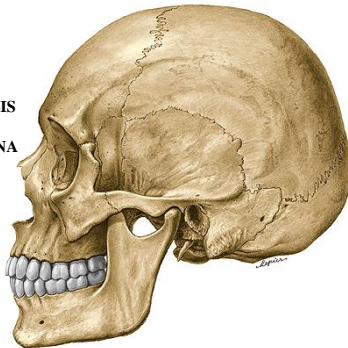
FOSSA INFRATEMPORALIS

FOSSA PTERYGOPALATINA

ORBITA

CAVITAS NASI OSSEA

CAVUM ORIS



Medial wall

linea temporalis superior (os frontale, os parietale)

facies temporalis alae majoris ossis sphenoidalis

pars squamosa ossis temporalis

Ventral wall

facies temporalis ossis zygomatici

processus zygomaticus ossis frontalis

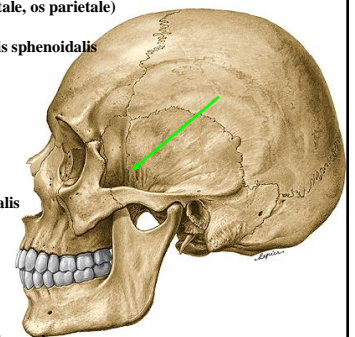
Lateral wall

arcus zygomaticus

Content:

musculus temporalis + nerves and vessels

Fossa temporalis



Fossa infratemporalis

Superior wall

Crista infratemporalis alae majoris ossis sphenoidalis

Medial wall

Lamina lateralis processus pterygoidei

Ventral wall

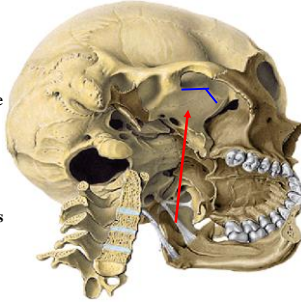
Facies infratemporalis corporis maxillae

Lateral wall

Ramus mandibulae

Content:

musculi pterygoidei + nerves and vessels



Fossa pterygopalatina

Superior wall

Facies maxillaris alae majoris ossis sphenoidalis

Medial wall

Lamina perpendicularis ossis palatini

Ventral wall

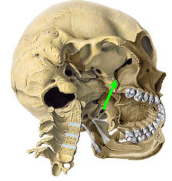
tuber maxillae

Dorsal wall

Processus pterygoideus ossis sphenoidalis

Content:

Nerves and vessels (ganglion pterygopalatinum)



Fossa pterygopalatina – communication



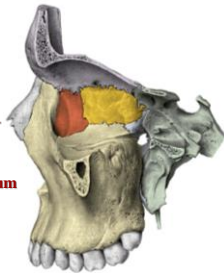
foramen rotundum
fossa cranii media

canalis palatinus major
cavum oris

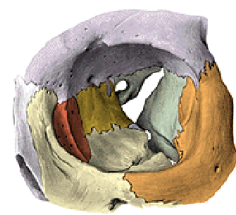
fissura orbitalis inferior
orbita

foramen sphenopalatinum
cavum nasi osseum

canalis pterygoideus
basis cranii externa



Orbit



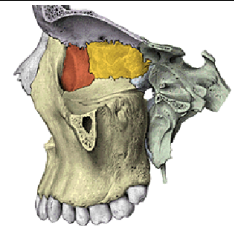
Aditus orbitae

margo supraorbitalis, infraorbitalis

Superior wall

pars orbitalis ossis frontalis

ala minor ossis sphenoidalis



Medial wall

processus frontalis maxillae

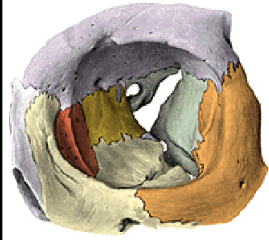
os lacrimale

lamina orbitalis ossis ethmoidalis

ala minor ossis sphenoidalis

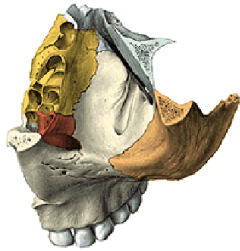
Lateral wall

facies orbitalis ossis zygomatici
 facies orbitalis alae majoris ossis sphenoidalis
 fissura orbitalis superior et inferior



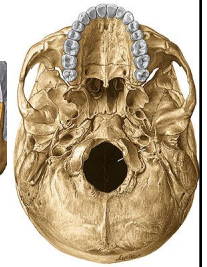
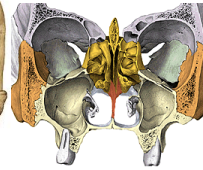
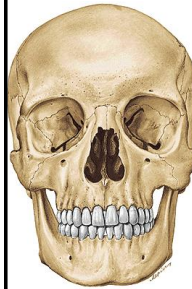
Inferior wall

facies orbitalis corporis maxillae
 facies orbitalis ossis zygomatici
 processus orbitalis ossis palatini



Cavitas nasi ossea

apertura piriformis
 choanae

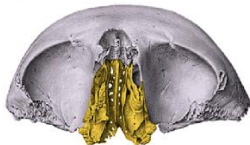


Roof (superior wall)
 Bottom (palatum durum)
 Medial wall (septum nasi)
 Lateral wall (three layers)

Cavitas nasi ossea

Superior wall

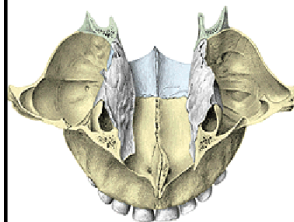
ossa nasalia
 pars nasalis ossis frontalis
 lamina cribrosa ossis ethmoidalis
 corpus ossis sphenoidalis



Inferior wall

(palatum durum)

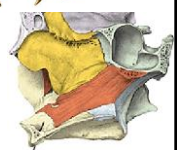
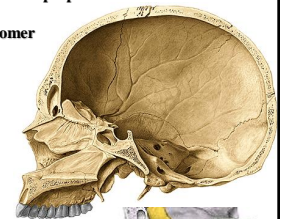
os incisivum (premaxilla)
 processus palatini maxillarum
 laminae horizontales ossis palatini

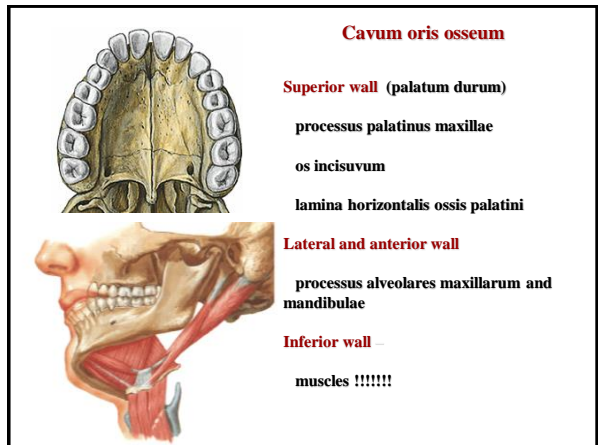
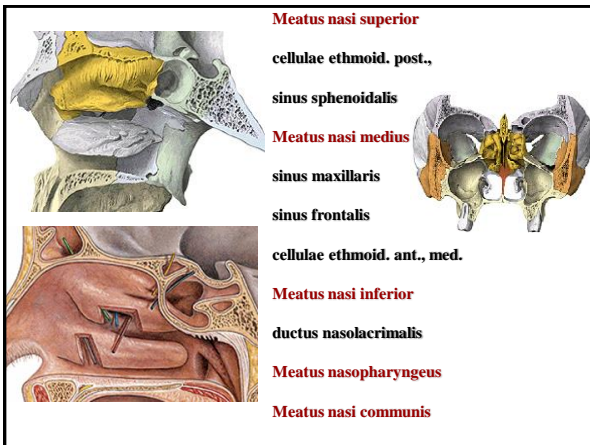
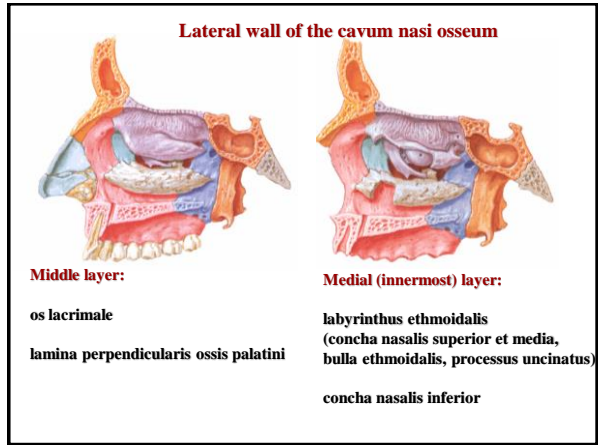
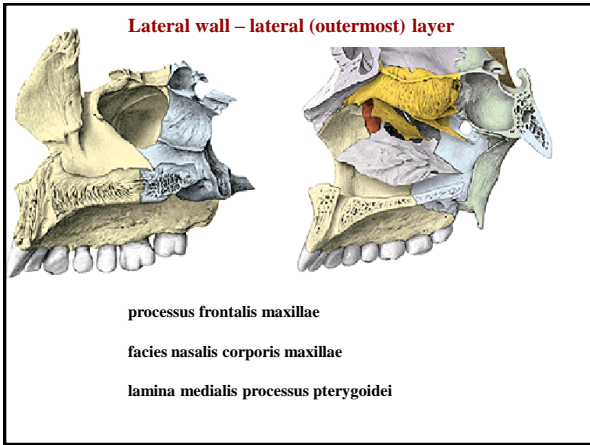


Medial wall

(septum nasi)

lamina perpendicularis ossis ethmoidalis
 vomer





References:

Putz, R. (2008):
Atlas of Human Anatomy Sobotta. Elsevier Books.

Keith L. Moore, Arthur F. Dalley (2005):
Clinically Oriented Anatomy. Williams and Wilkins.

Platzer, W., Kahle, W., Leonhardt H. (1992):
Locomotor system. Georg Thieme Verlag, Stuttgart,
New York, 4th edition.

Čihák, R. (1987): Anatomie 1. Avicenum, Zdravotnické
nakladatelství.