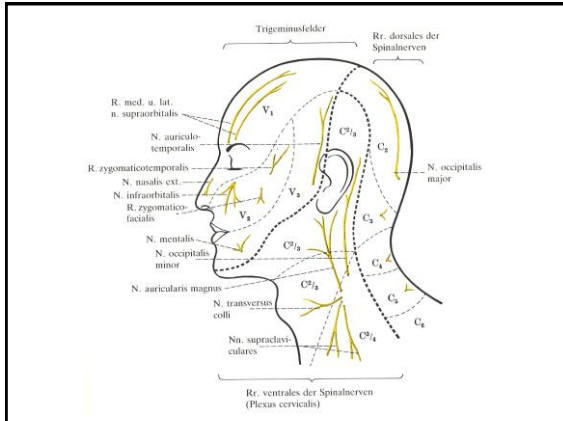


**Imaging techniques  
Topography**

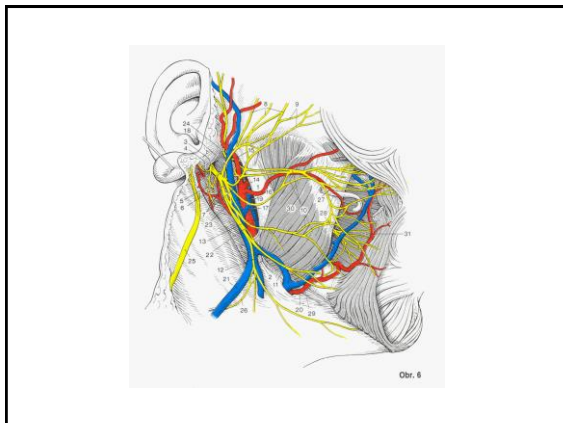
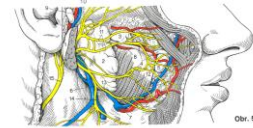
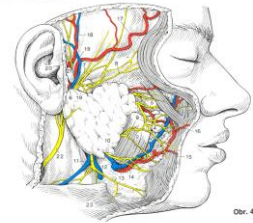
2

**Regional anatomy of the head**



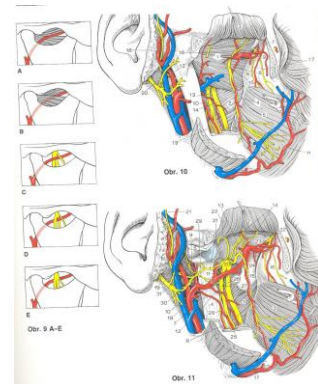
**Regio parotideomasseterica**

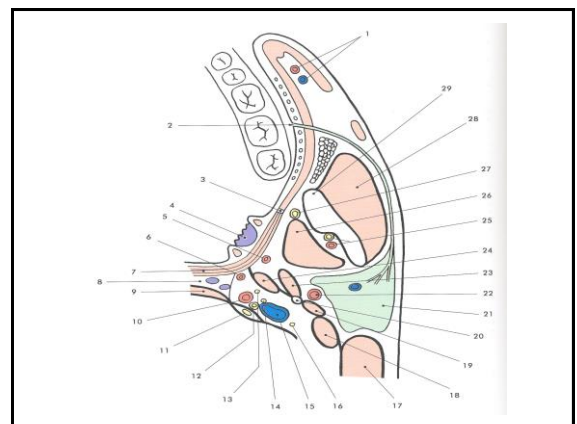
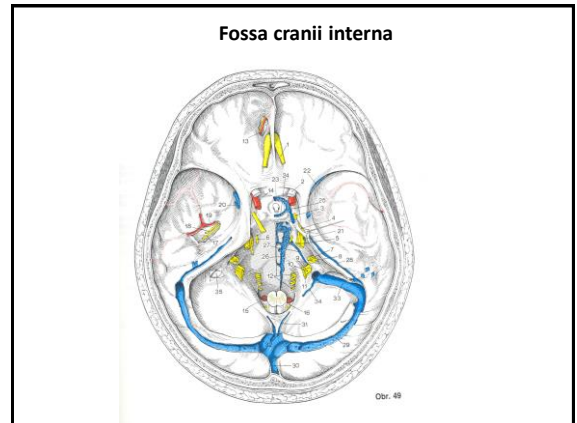
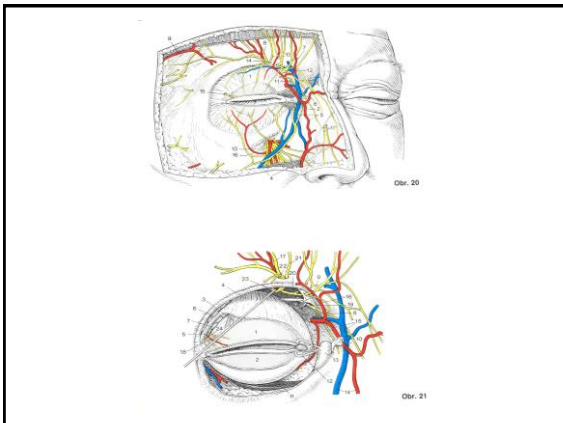
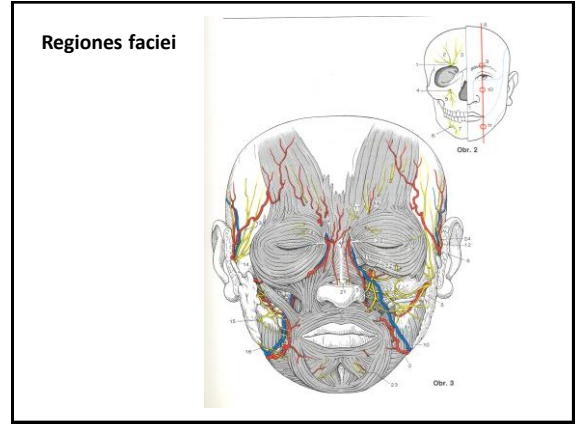
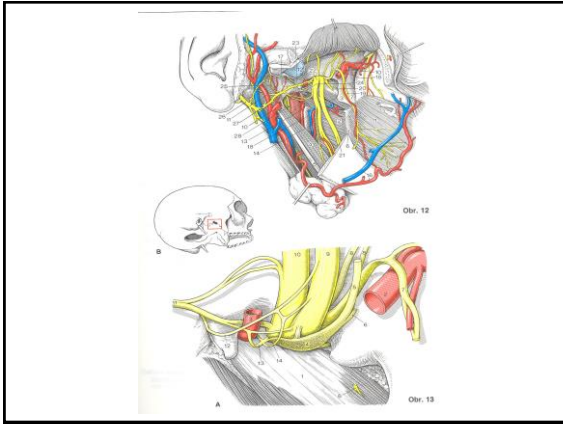
- Tragus, zygomatic arch, angulus mandibulae, masseter
- Nervus auriculotemporalis
- Parotid gland
- A. et v. temporalis supf.
- Nervus facialis !!!



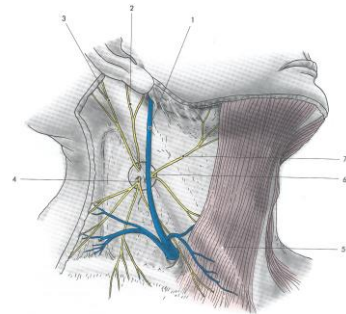
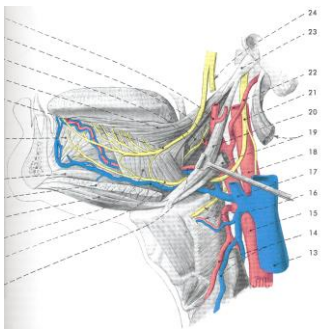
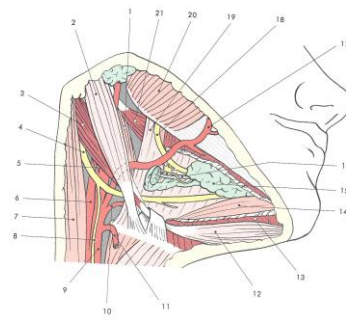
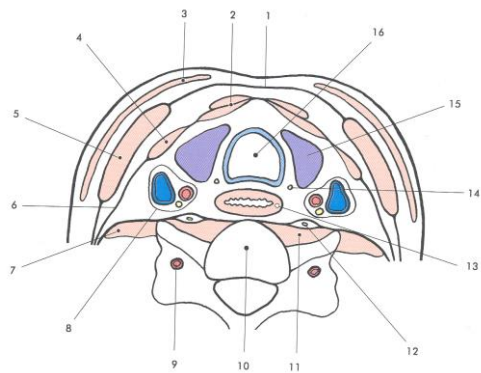
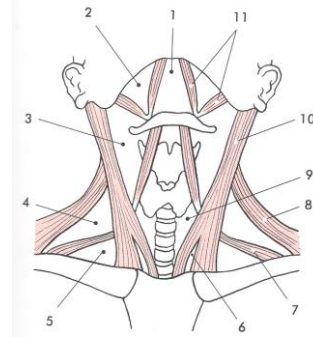
**Fossa infratemporalis**

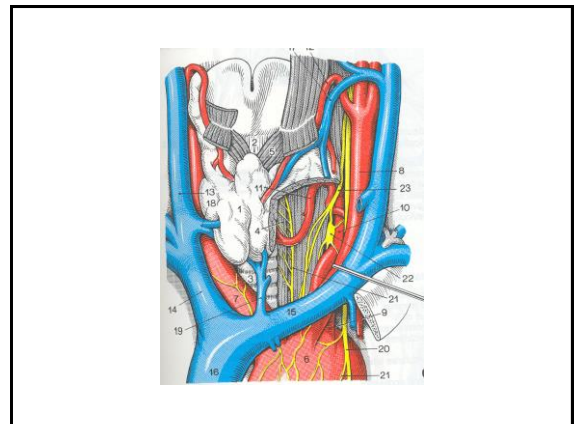
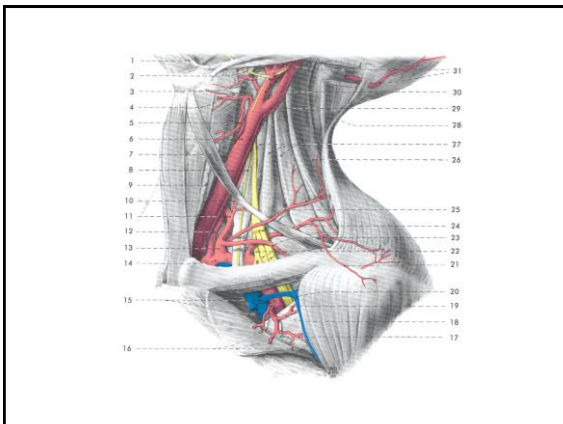
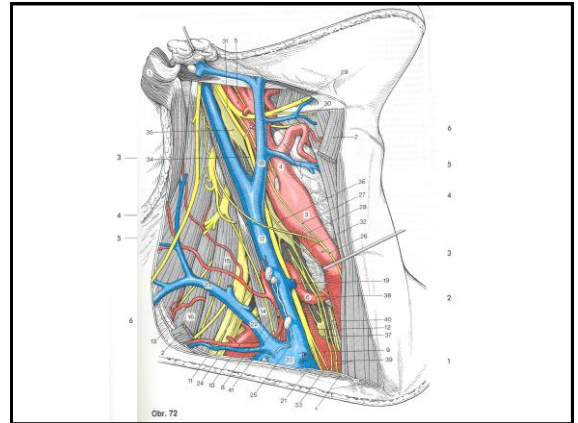
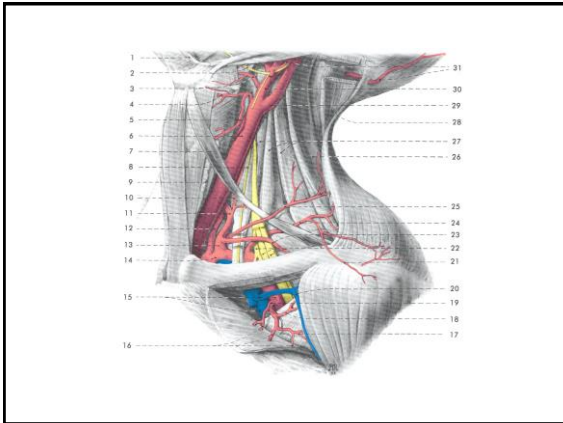
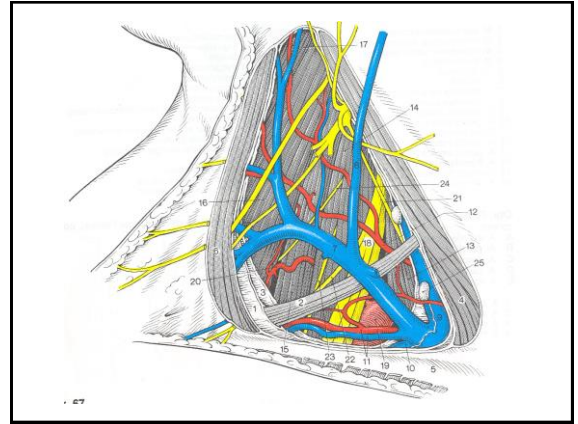
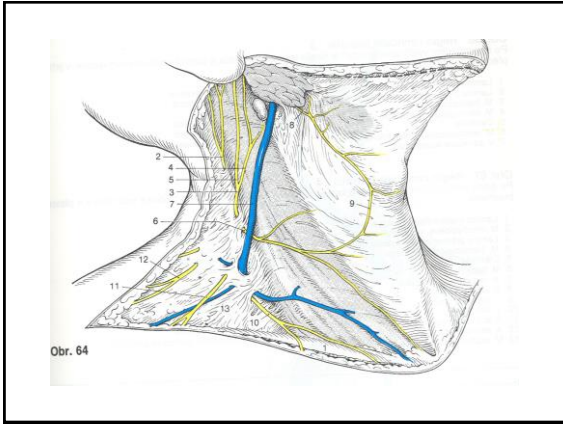
- Ramus mandibulae, tuber maxillae, styloid septum, pharynx
- N. mandibularis
- A. et v. maxillaris

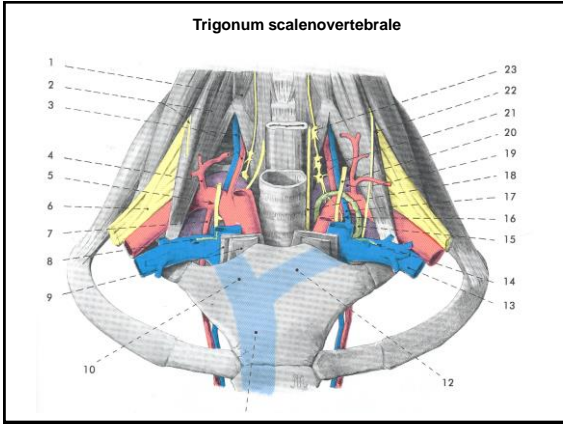




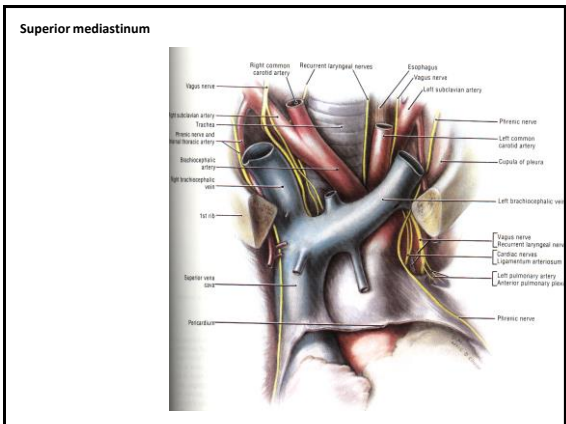
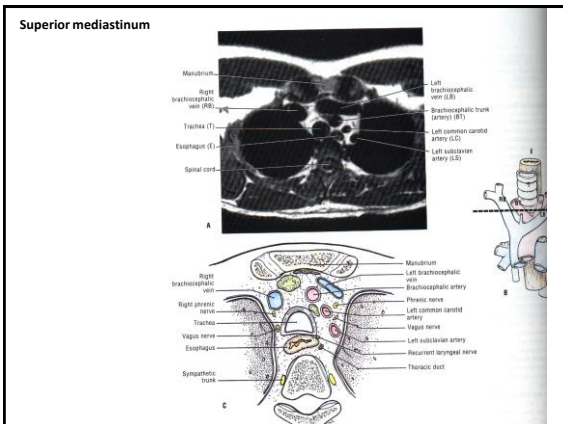
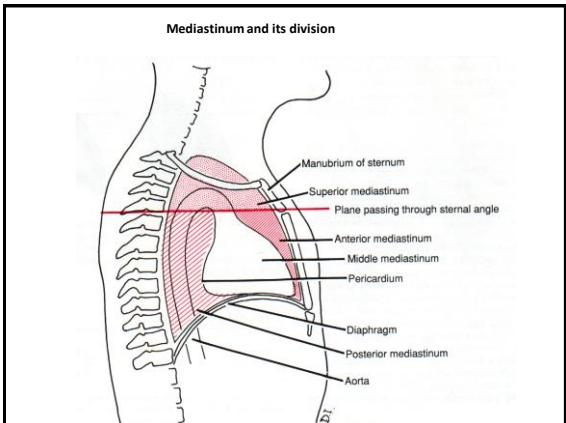
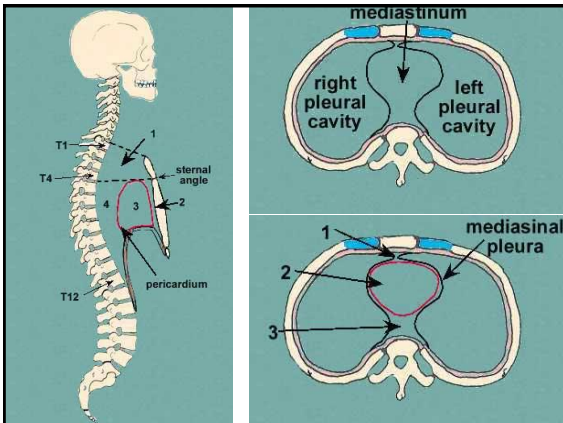
REGIONAL ANATOMY OF THE NECK

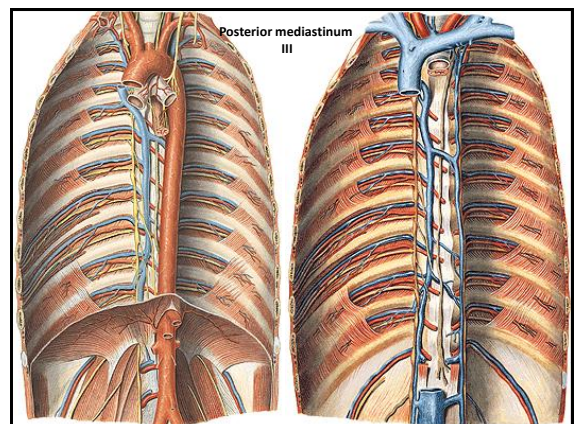
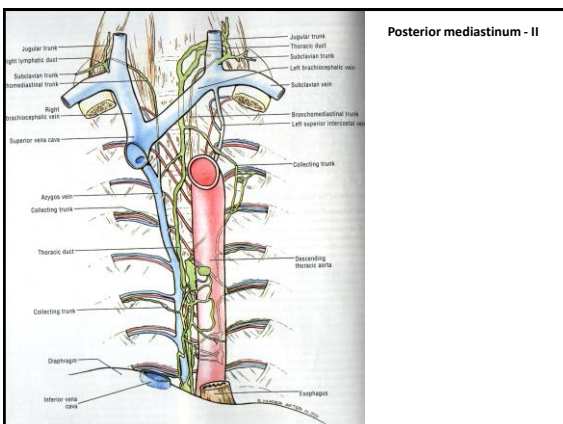
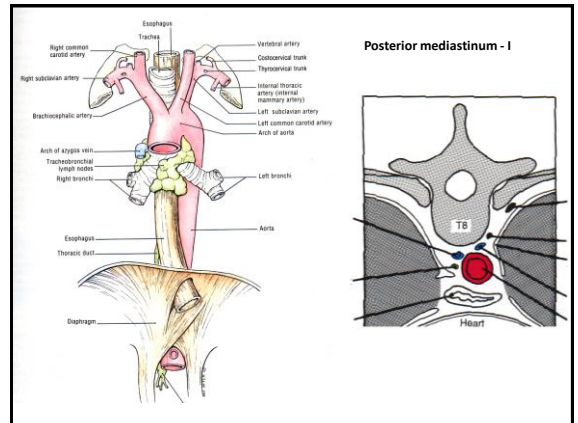
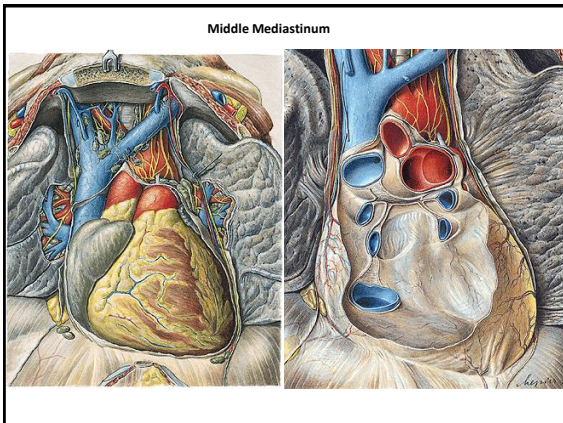
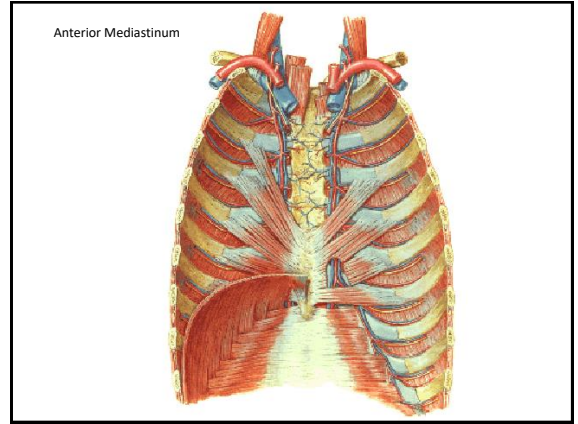
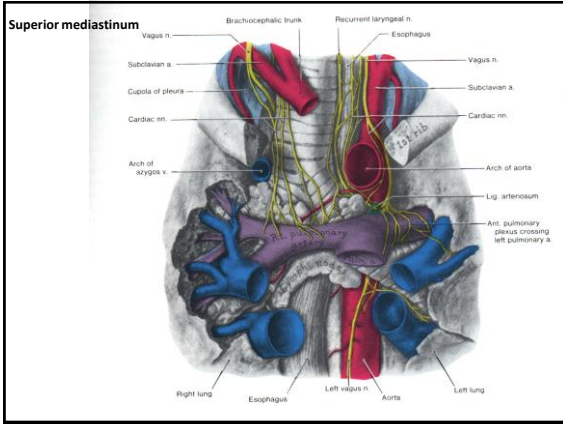


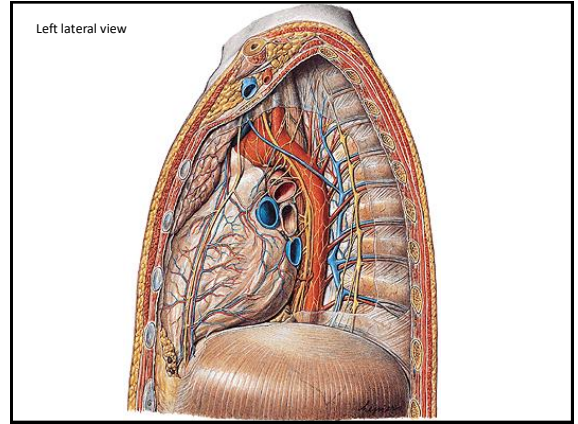
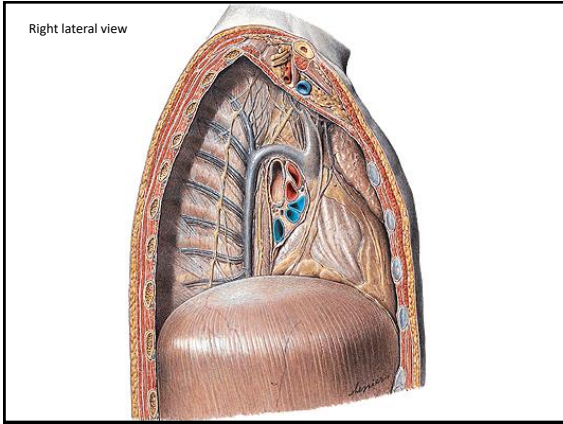




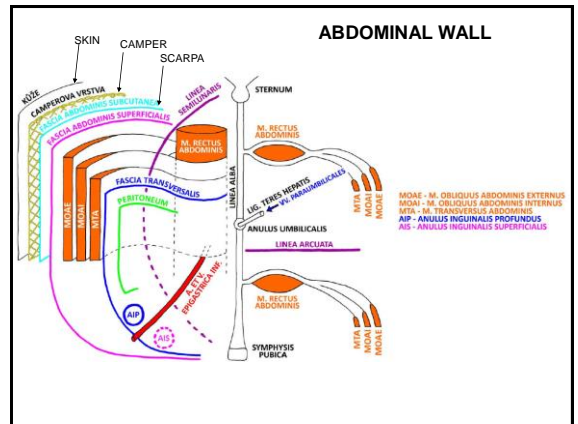
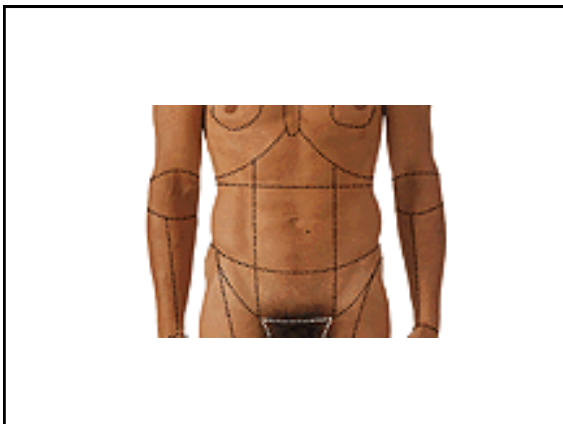
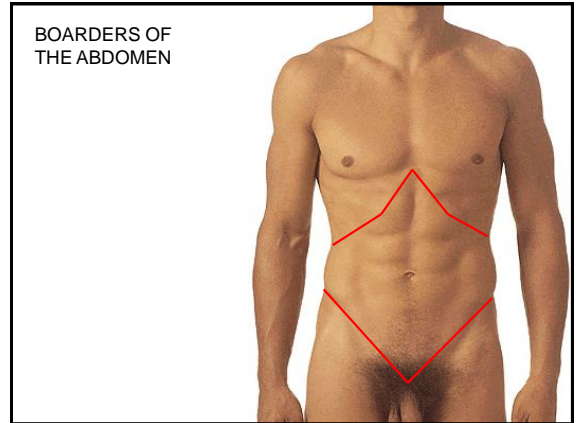
**REGIONAL ANATOMY OF THE CHEST**

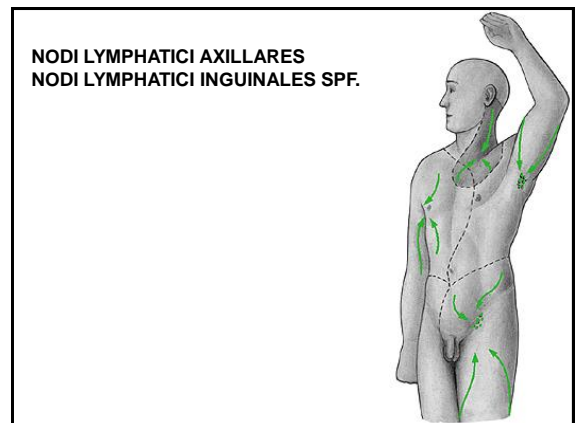
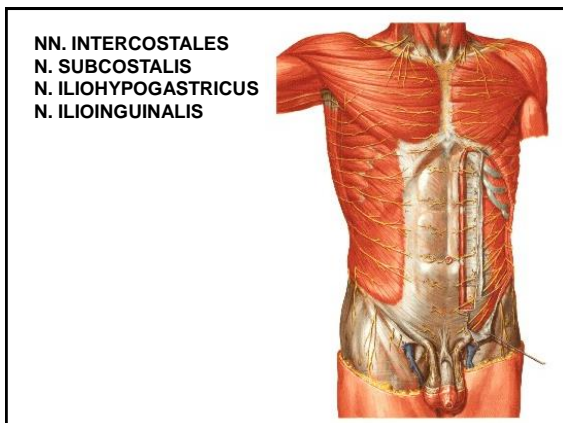
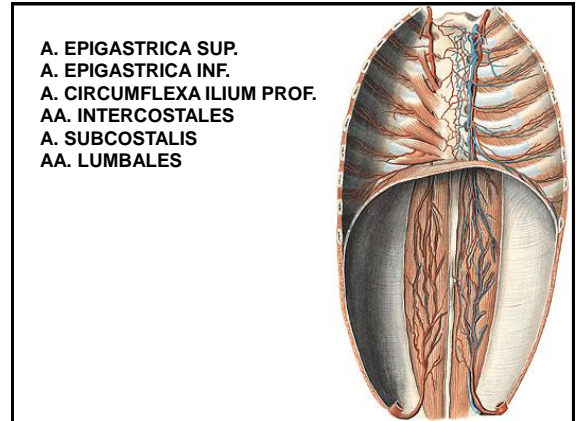
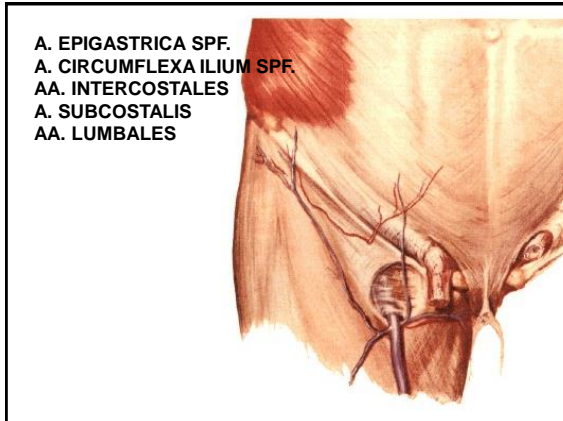
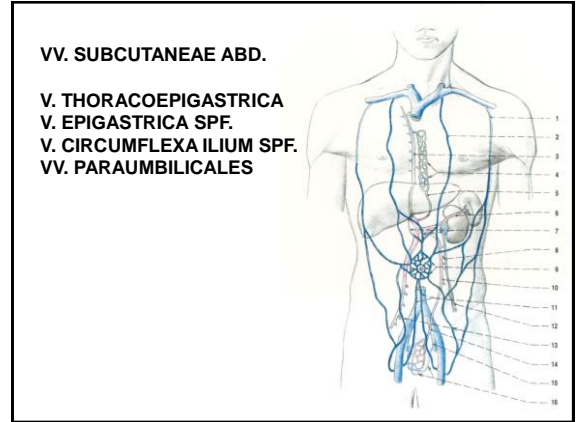
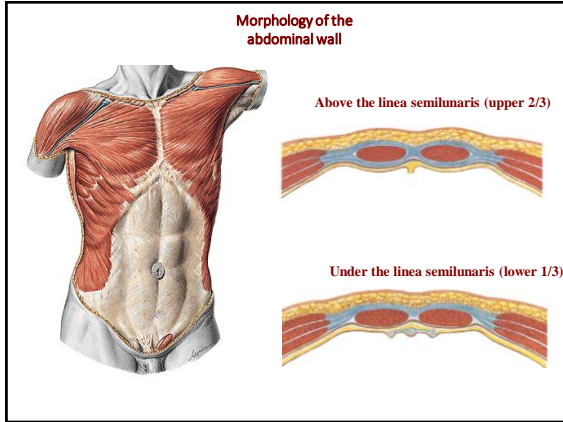






# REGIONAL ANATOMY OF THE ABDOMEN







**Canalis inguinalis**

Anterior wall: aponeurosis of the m. obliquus externus  
 Superior wall: margine of the musculus obliquus int. abdominis and m. transversus abdominis  
 Inferior wall: lig. inguinale

**CANALIS INGUINALIS**

**Posterior wall:**  
 Fascia transversalis:  
 Anulus inguinalis prof.  
 Lig. interfoveolare  
 Trigonum inguinale (Hesselbachi)  
 Falx inguinalis (conjoint tendon)  
 Tractus iliopubicus  
 Anulus femoralis

**CANALIS INGUINALIS**

Legend:  
 MOEA - M. OBLIQUUS EXTERNUS ABDOMINIS  
 MOIA - M. OBLIQUUS INTERNUS ABDOMINIS  
 MTA - M. TRANSVERSUS ABDOMINIS  
 FT - FASCIA TRANSVERSALIS  
 AIP - ANULUS INGUINALIS PROFUNDUS  
 P - PERITONEUM  
 FI - FOSSA INGUINALIS LATERALIS  
 FIM - FOSSA INGUINALIS MEDIALIS  
 FISM - FOSSA INGUINALIS MEDIALIS SUPERFICIALIS  
 FSI - FOSSA SUPRAVESICALIS  
 FSL - FOSSA SUPRAVESICALIS LATERALIS  
 TIP - TRACTUS ILIOPUBICUS  
 FIF - FIBRAE INTERCERVICALES  
 CL - CRUS LATERALE  
 CM - CRUS MEDIALE  
 NI - N. ILIOINGUINALIS  
 IS - FUNICULUS SPERMATICUS  
 AC - A. CREMASTERICA  
 RING - R. GENITALIS N. GENITOFEMORALIS  
 ALTU - A. LIGAMENTI TERETIS UTERI

I - HERNIA INGUINALIS INDIRECTA  
 II - HERNIA INGUINALIS DIRECTA  
 III - HERNIA SUPRAVESICALIS

Plica umbilicalis mediana - lig. umbilicale medianum (chorda urachi)  
 Fossa supravesicalis  
 Plica umbilicalis medialis - lig. umbilicale mediale (laterale) (pars occlusa a. umbilicalis s. chorda umbilicalis)  
 Fossa inguinalis medialis - direct inguinal hernia  
 Plica umbilicalis lateralis - vasa epigastrica inf.  
 Fossa inguinalis lateralis - indirect inguinal hernia

**Projection of the organs**

- 1 medioclavicular line
- 2 Right umbilicoaxillary line
- 3 Liver
- 4 Triangle of Labeé
- 5 Transpyloric line
- 6 Murphy's point
- 7 Désjardins pancreatic point
- 8 Umbilicus
- 9 Monroe's line
- 10 MacBurney's point
- 11 Lanz point
- 12
- 13 Bispinal line

**CAVITAS ABDOMINALIS**

P - cavitas peritonealis  
 A - spatium preperitoneale  
 R - spatium retroperitoneale  
 S - spatium subperitoneale (infraperitoneale)

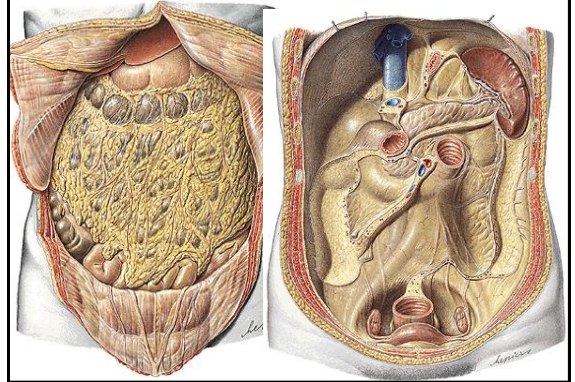
ascites

**Intraperitoneal organs:**  
 Abdominal part of the oesophagus, stomach, superior part of the duodenum, jejunum, ileum, appendix vermiformis, colon transversum, colon sigmoideum, liver, spleen

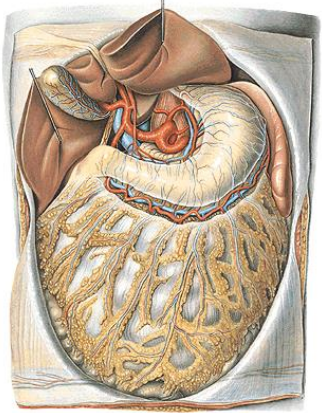
**Secondarily retroperitoneal organs:**  
 Most of duodenum, pancreas, caecum, colon ascendens, colon descendens

**Primarily retroperitoneal organs:**  
 Kidneys, suprarenal glands, aorta, vena cava inf.

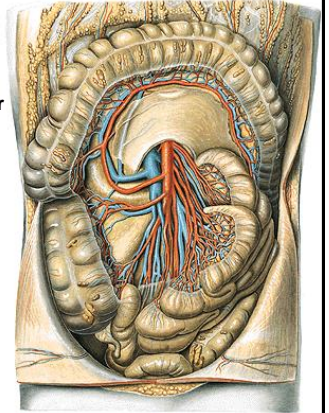
**Cavitas peritonealis - pars supramesocolica, inframesocolica**



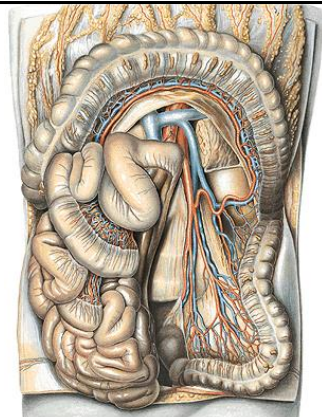
**Pars supramesocolica**  
**Truncus coeliacus**



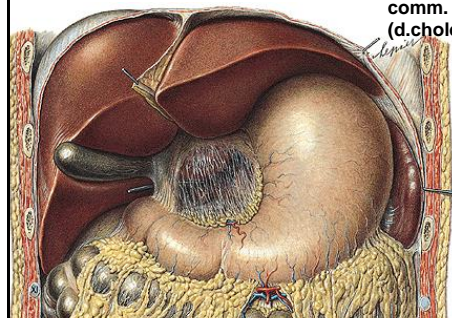
**Right infra(meso)colic compartment**  
**A. mesenterica superior**

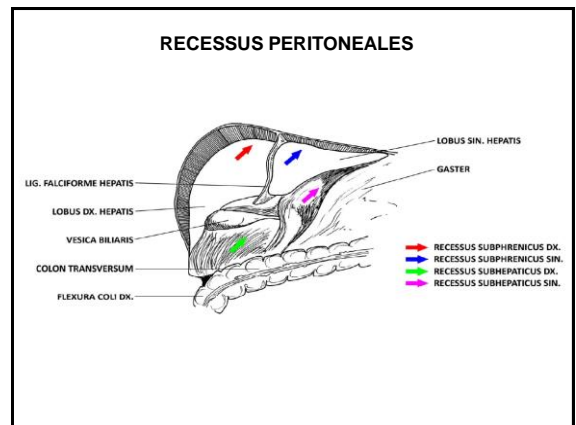
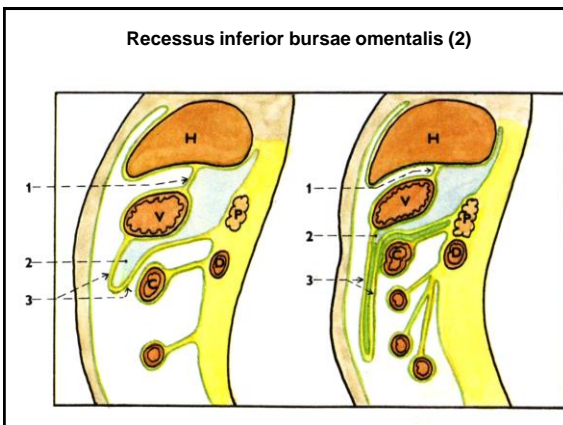
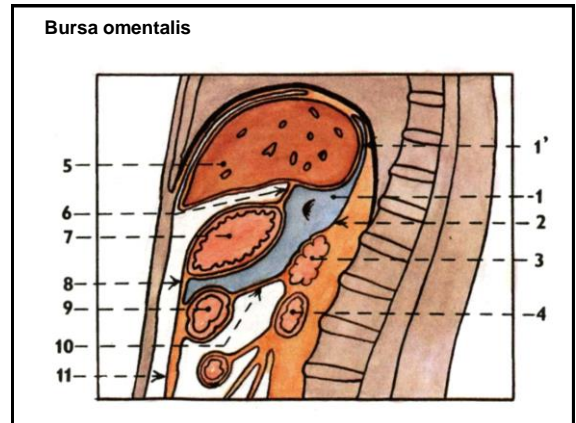
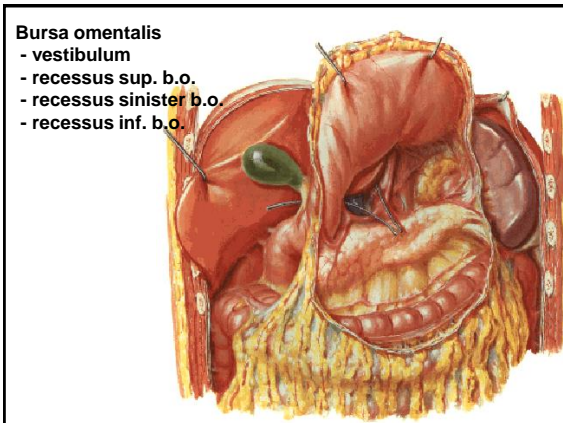
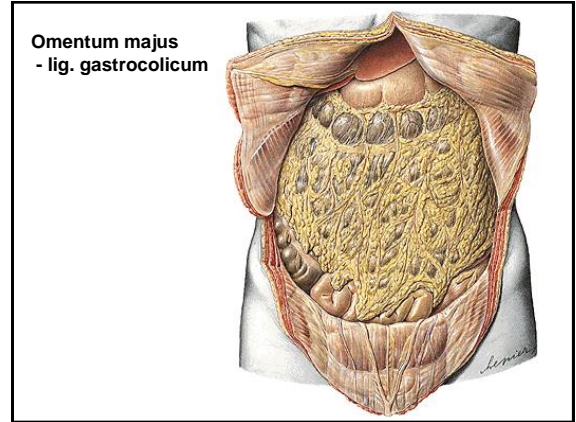
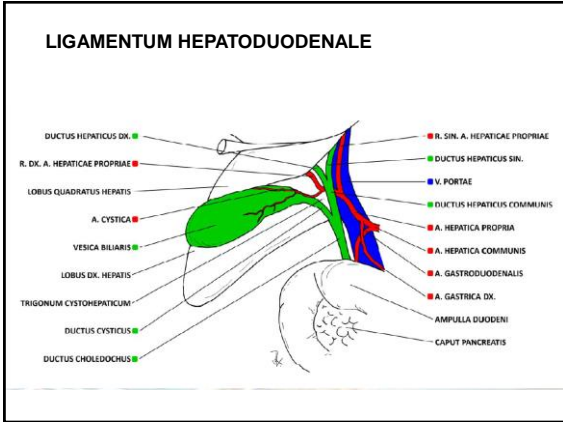


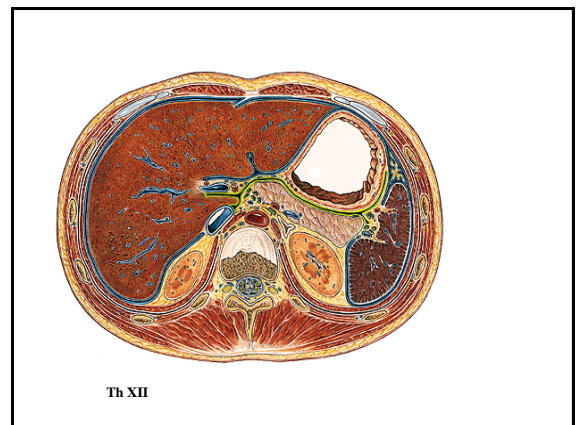
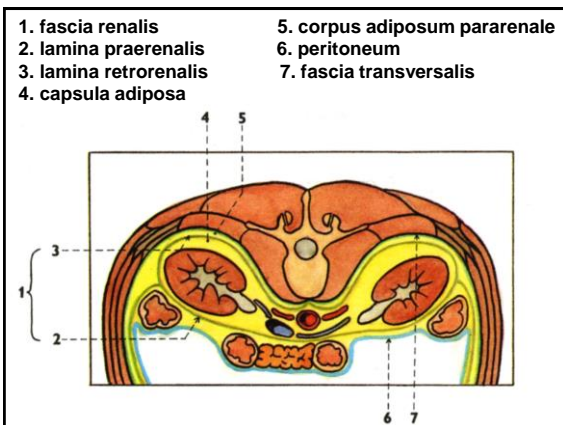
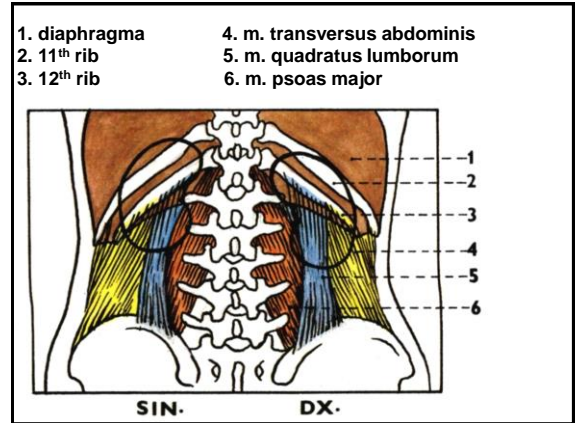
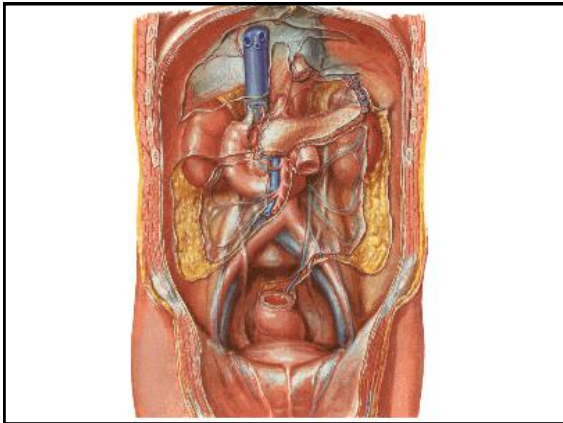
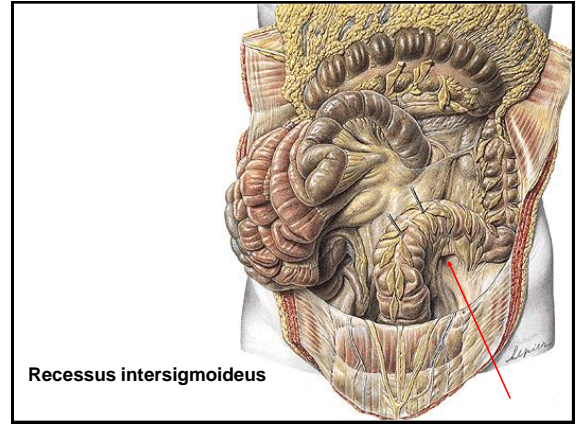
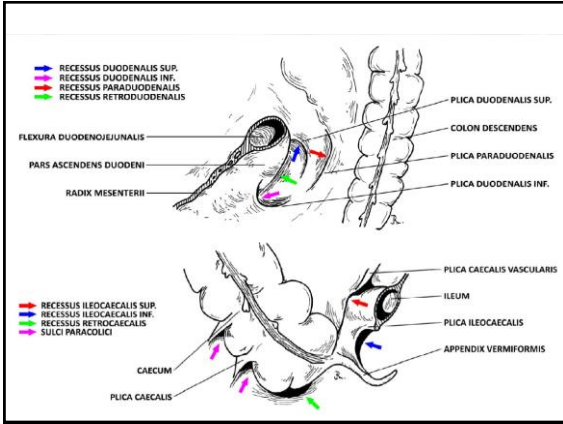
**Left infra(meso)colic compartment**  
**A. mesenterica inferior**

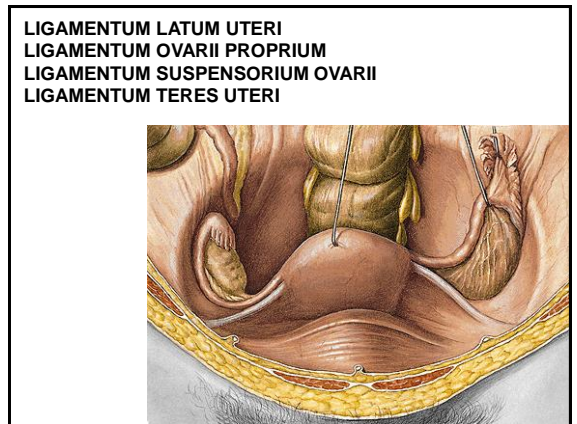
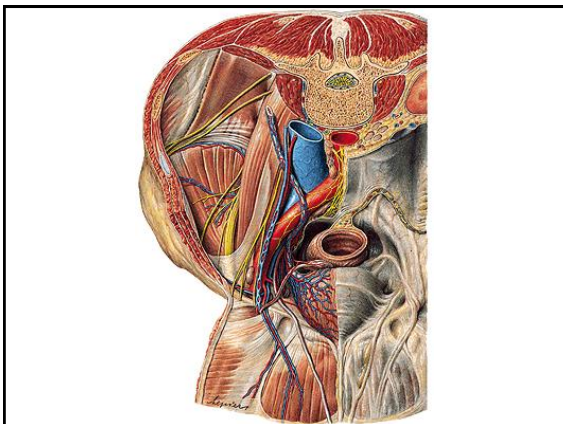
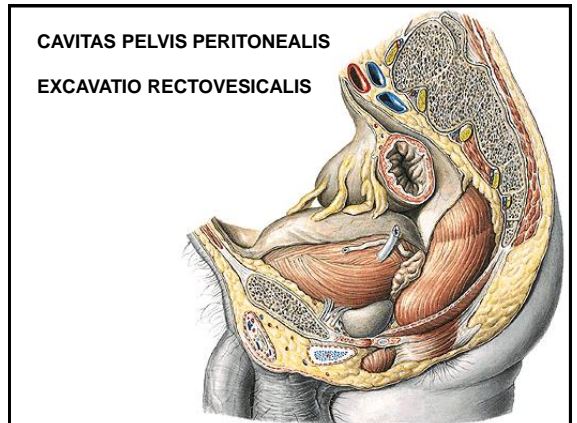
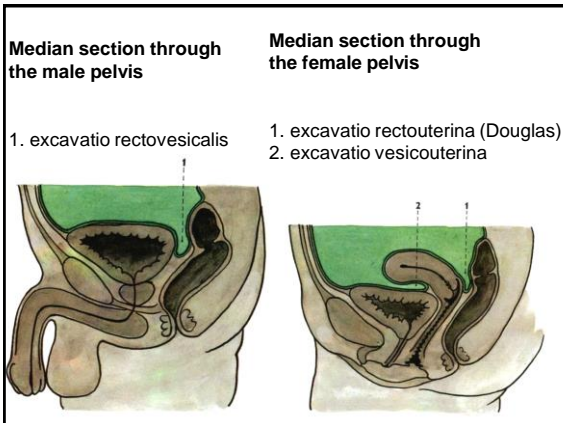
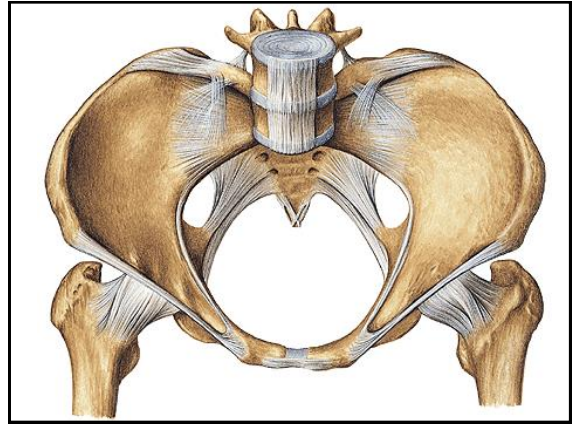


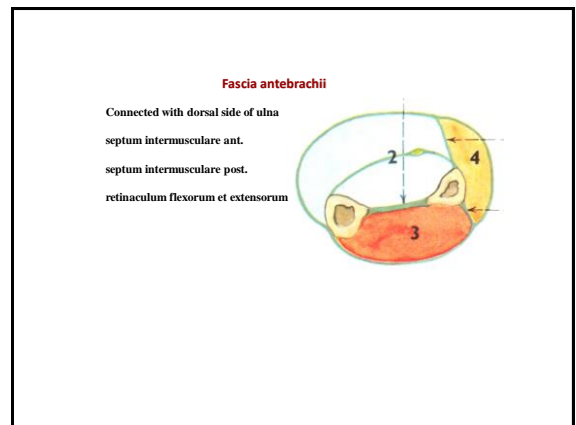
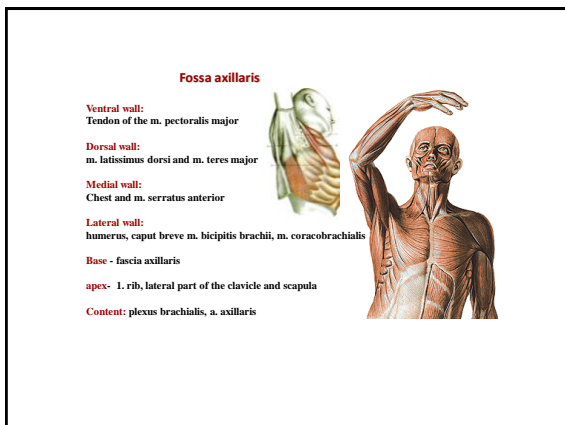
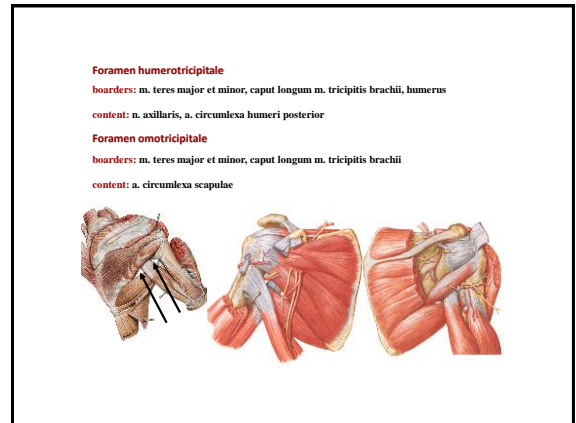
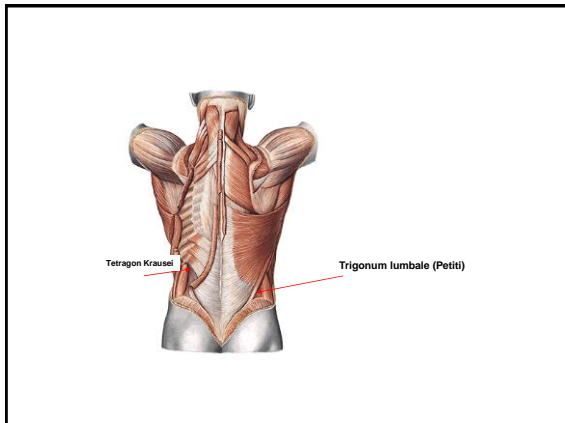
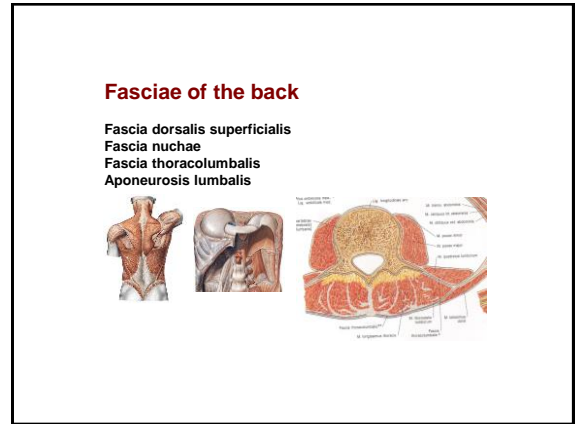
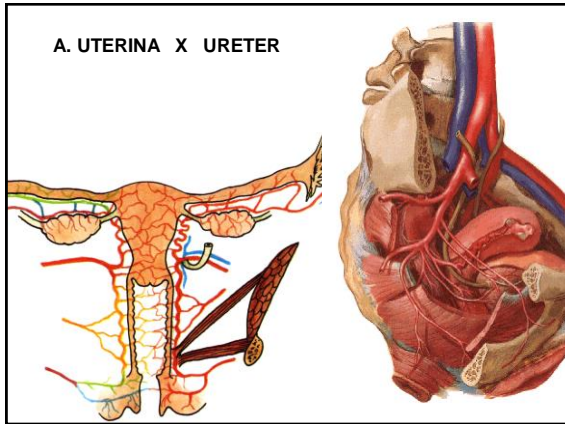
**Omentum minus - lig. hepatogastricum**  
**- lig. hepatoduodenale - a. hepatica propria**  
**- v. portae**  
**- ductus hepaticus comm.**  
**(d.choledochus)**











Eminentia carpi radialis et ulnaris  
 Retinaculum flexorum (lig. carpi transversum)

**Canalis carpi:**

**Radial part:** m. flexor carpi radialis

**Ulnar part:** m. flexor digitorum superficialis  
 m. flexor digitorum profundus  
 m. flexor pollicis longus  
 nervus medianus

**Vaginae synoviales of flexors**

Vagina synovialis tendinis m. flexoris carpi radialis  
 Vagina synovialis tendinis m. flexoris pollicis longi  
 Vagina synovialis communis musculorum flexorum  
 Vaginae synoviales digitorum manus  
 Vaginae fibrosae digitorum manus  
 (pars annularis, pars cruciformis)

**Vaginae synoviales of the extensors**

Retinaculum extensorum (radius - os triquetrum a os hamatum)

- m. abductor pollicis longus  
 m. extensor pollicis brevis
- m. extensor carpi radialis longus et brevis
- m. extensor pollicis longus
- m. extensor indicis  
 m. extensor digitorum communis
- m. extensor digiti minimi
- m. extensor carpi ulnaris

**Fasciae manus**

Fascia dorsalis manus superficialis  
 Fascia dorsalis manus intertendinea  
 Fascia dorsalis manus interossea  
 Fascia palmaris superficialis - **aponurosis palmaris**  
 Fascia palmaris interossea  
 Septum palmare radiale (3rd metacarpal bone)  
 Septum palmare ulnare (5th metacarpal bone)  
**Spatium palmare radiale, ulnare, medium**

**Foramen suprapiriforme:**  
 Content: vasa glutea superiora, nervus gluteus superior

**Foramen infrapiriforme:** nervus ischiadicus, nervus cutaneus femoris posterior, vasa glutea inferiora, nervus gluteus inferior, vasa pudenda interna, nervus pudendus

Inguinal ligament, arcus iliopectineus, os coxae

**Lacuna vasorum:**  
 Arteria et vena femoralis, ramus femoralis nervi genitofemoralis

**Lacuna musculorum:**  
 Iliopsoas, nervus femoralis, nervus cutaneus femoris lateralis

**Trigonum femorale, fossa iliopectinea:**

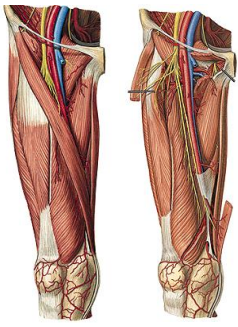
**Boarders:** Inguinal ligament, musculus sartorius, musculus adductor longus

**Content:** nodus lymphaticus inguinalis profundus, vena femoralis, arteria femoralis, nervus femoralis, ramus femoralis nervi genitofemoralis

**Canalis adductorius:**

Musculus vastus medialis, musculus adductor magnus, Lamina vastoductoria

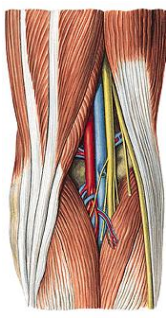
Vasa femoralia, nervus femoralis



**Fossa poplitea:**

**Boarders:** musculus biceps femoris, musculus semitendinosus, musculus semimembranosus, caput mediale et laterale muscui gastrocnemii

**Content:** nervus tibialis, nervus fibularis communis, vena poplitea, arteria poplitea



**Vaginae synoviales – ventral group**

**Retinaculum musculorum extensorum si**


(between malleolus medialis et lateralis)

three osteofibrous spaces:

- m. tibialis ant.
- m. extensor hallucis longus
- m. extensor digitorum longus

**Retinaculum musculorum extensorum in**

(X or Y shape)



**Synovial vaginae – lateral group**

**Retinaculum musculorum peroneorum superius**

(between malleolus lat. and tuber calcanei)


Common synovial vagina

**Retinaculum musculorum peroneorum inferius**

(between tuber calcanei, troch calcanei and distal part of retinaculum)

2 osteofibrous canals:

- m. fibularis longus (below trochlea peronealis)
- m. fibularis brevis (above trochlea peronealis)



**Synovial vaginae – medial group**

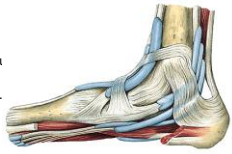
**Retinaculum musculorum flexorum**

(between malleolus lateralis and tuber calcanei)

Three osteofibrous spaces:

- m. tibialis post.
- m. flexor digitorum longi
- (a. and v. tibialis post., n.
- m. flexor hallucis longus

Synovial vagina for each muscle




**Fascia cruris**

Doesn't cover facies medialis tibiae

septum intermusculare anterius et posterius (anterior, lateral and posterior group)

Dorsal group – deep fascial sheath

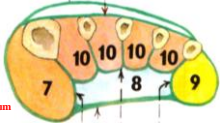
Firmed in retinaculum musculorum extensorum, flexorum, peroneorum



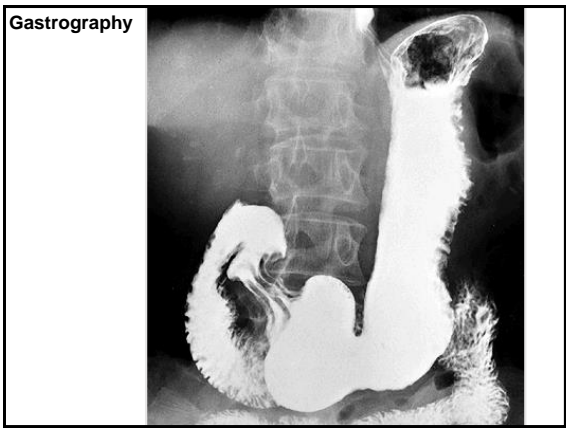
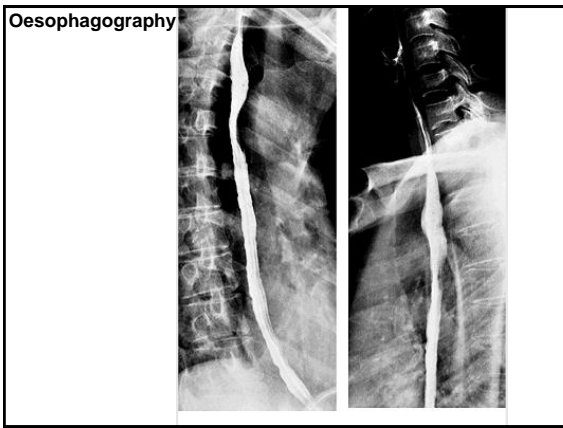
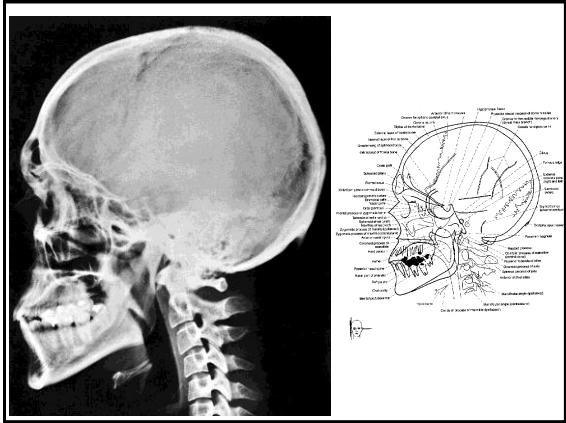
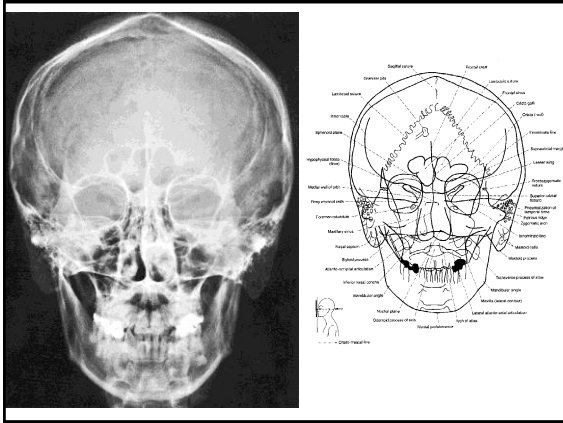


**Fasciae pedis**

Fascia dorsalis pedis  
 Fascia dorsalis pedis interossea  
 Fascia plantaris superficialis – aponeurosis plantaris  
 Fascia plantaris pedis interossea  
 Septum intermusculare mediale (1st metatarsal bone)  
 Septum intermusculare laterale (5th metatarsal bone)  
**Spatium plantare mediale, laterale, medium**



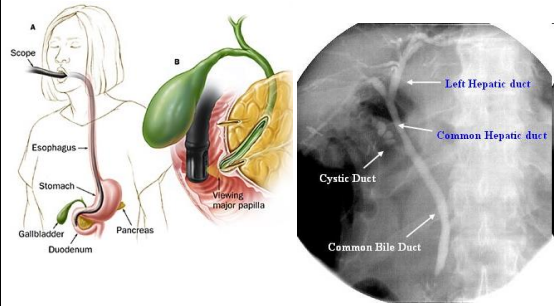
Description of the X-ray picture



**Cholecystography**



**ERCP (endoscopic retrograde cholangiopancreatography)**



**Irigography**



**intravenous urography**

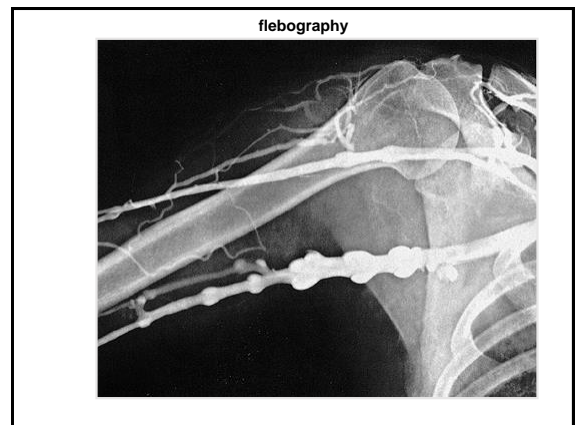
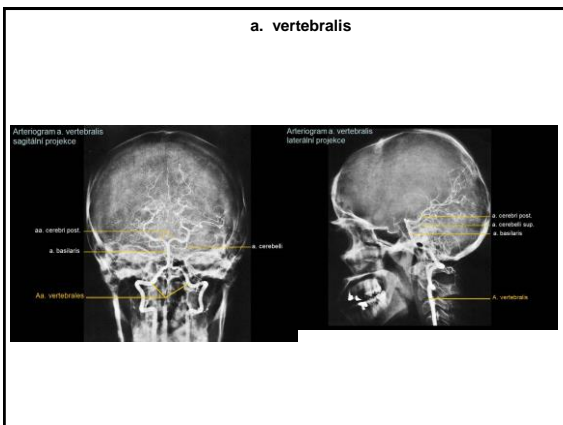
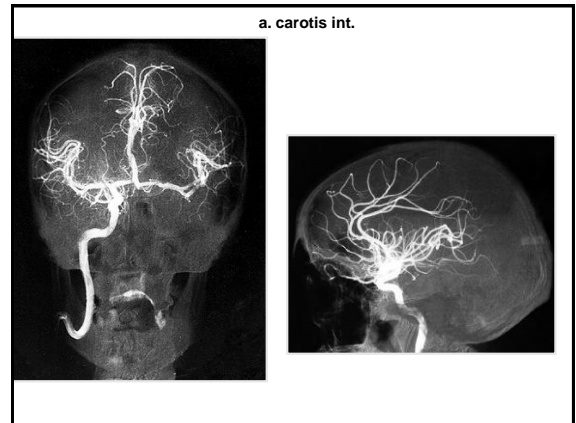
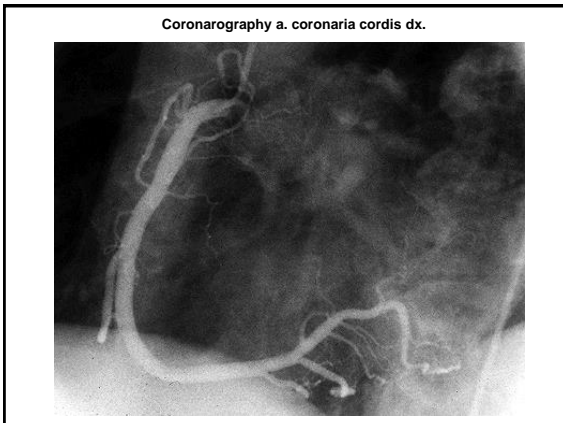
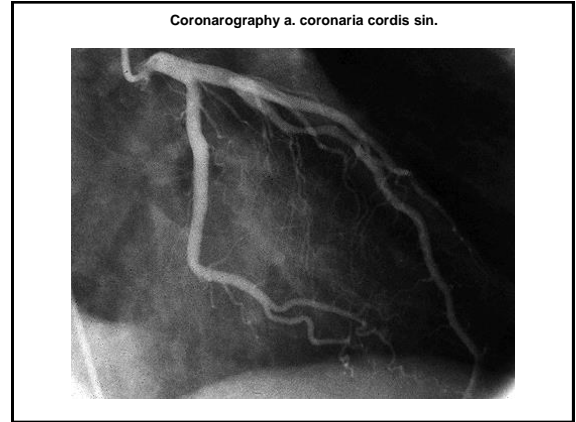
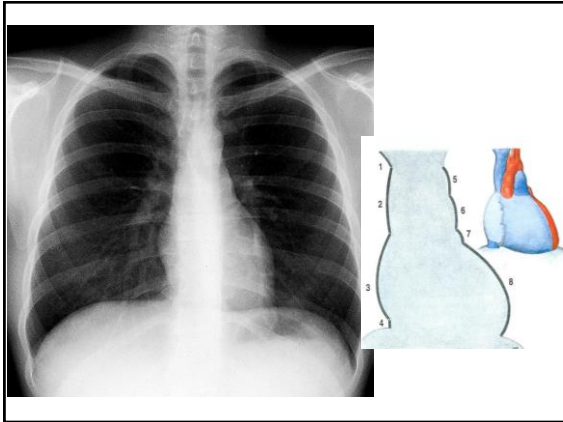


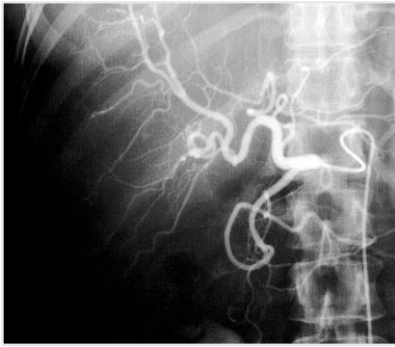
**Retrograde pyelography**



**Hysterosalpingography**





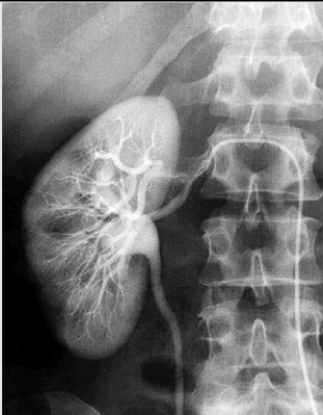


A. hepatica comm.

Truncus coeliacus



A. renalis



[https://is.muni.cz/auth/do/med/el/anatomie\\_samo\\_studium/pages/18-RTG.html](https://is.muni.cz/auth/do/med/el/anatomie_samo_studium/pages/18-RTG.html)

#### References:

Putz, R. (2008):

Atlas of Human Anatomy Sobotta. Elsevier Books.

Keith L. Moore, Arthur F. Dalley (2005):

Clinically Oriented Anatomy. Williams and Wilkins.

Platzer, W., Kahle, W., Leonhardt H. (1992):

Locomotor system. Georg Thieme Verlag, Stuttgart, New York, 4th edition.

Čihák, R. (1987):

Anatomie 1. Avicenum, Zdravotnické nakladatelství.

Netter, F. H. (1997):

Interactive Atlas of Clinical Anatomy. Novartis, USA.