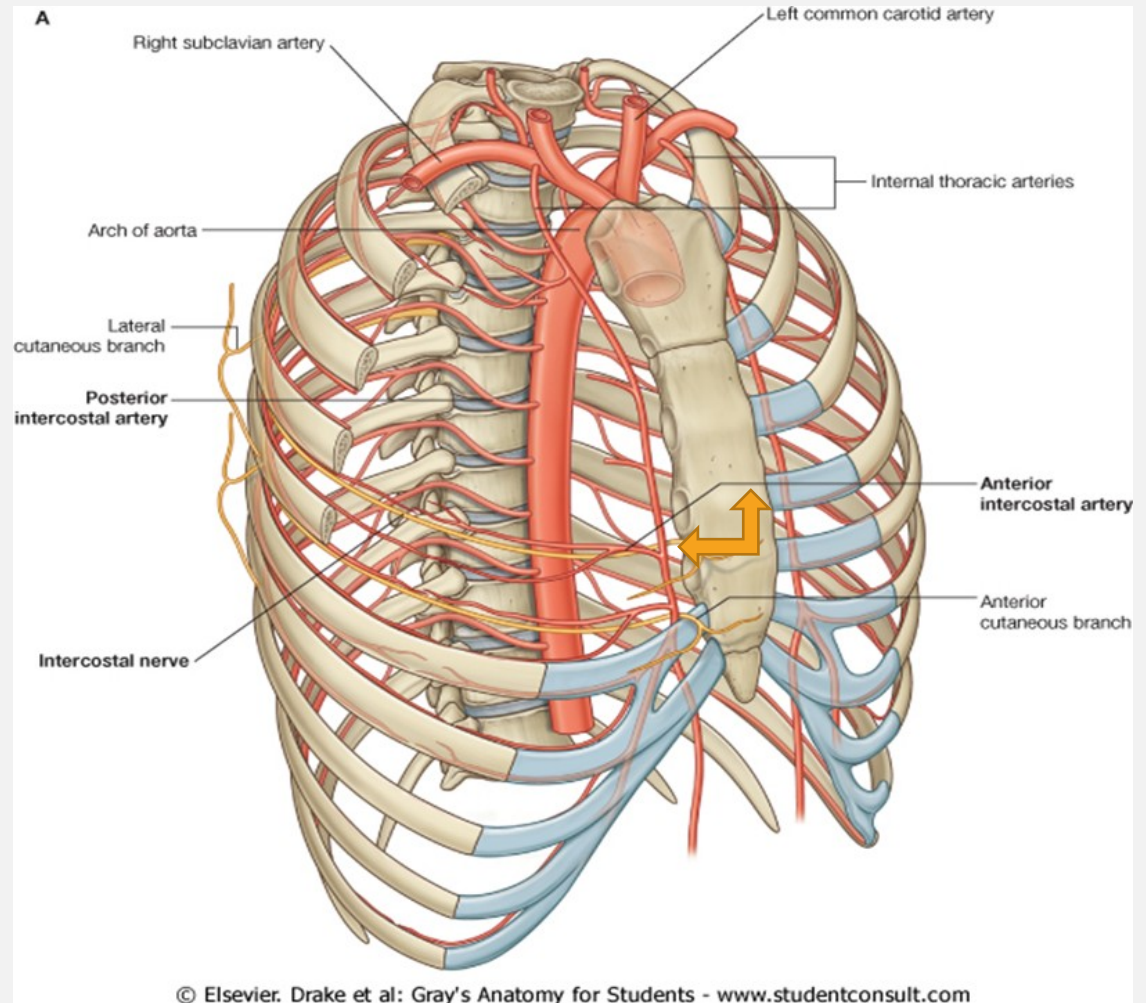
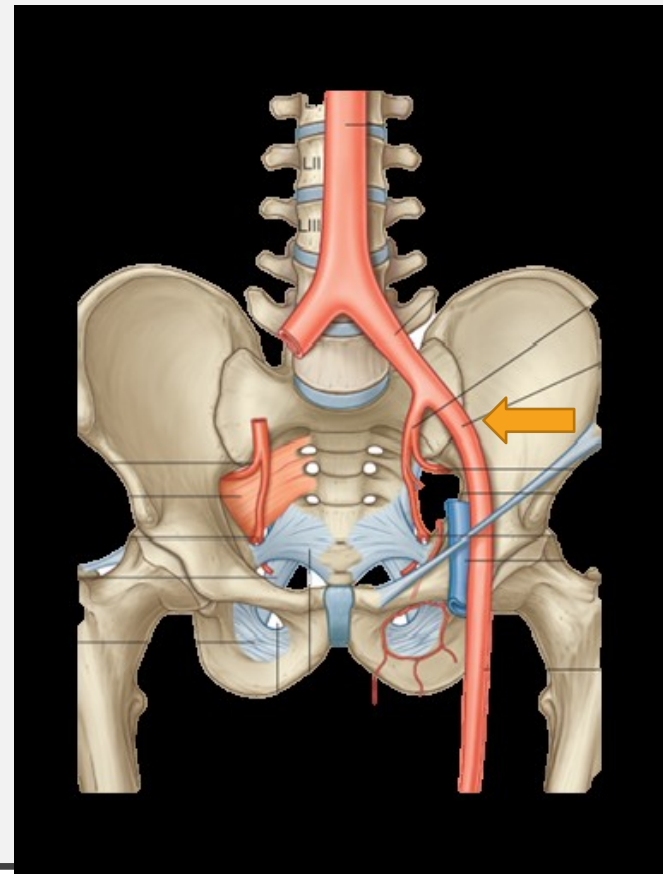
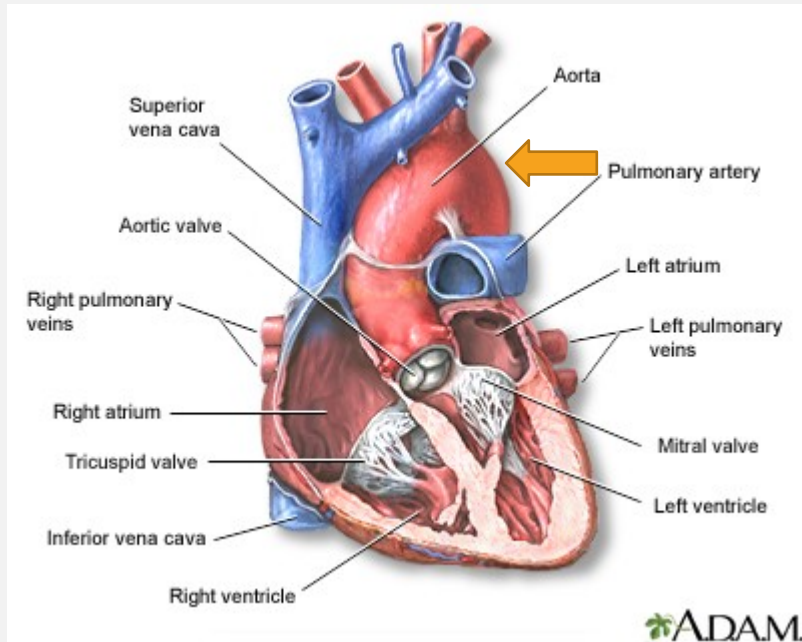


QUESTIONS

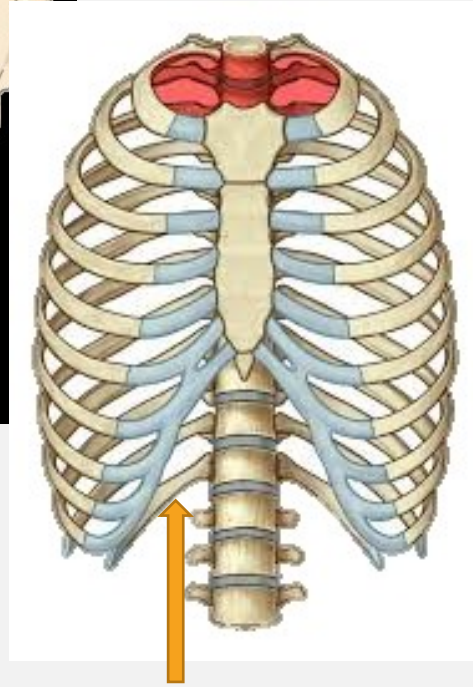
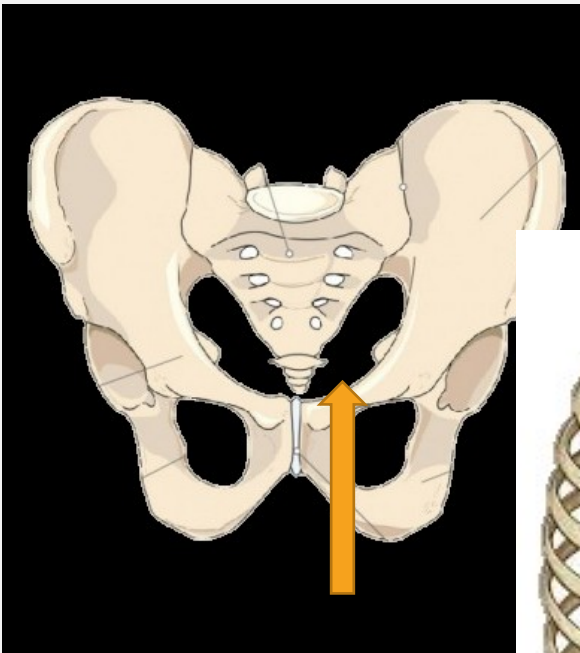
- What is the form of an adjective dependent on?
- What are the Nominative endings of adjectives?
- How do we decline the adjectives like *magnus, a, um* (*liber, era, erum*)?



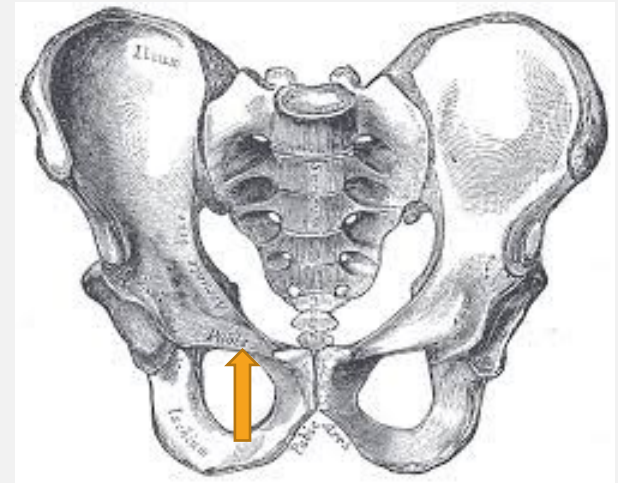
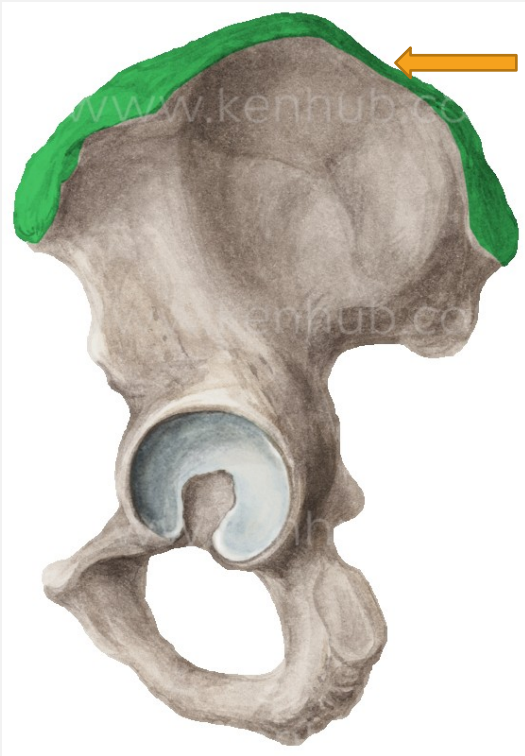
INTERNAL THORACIC
ARTERY?



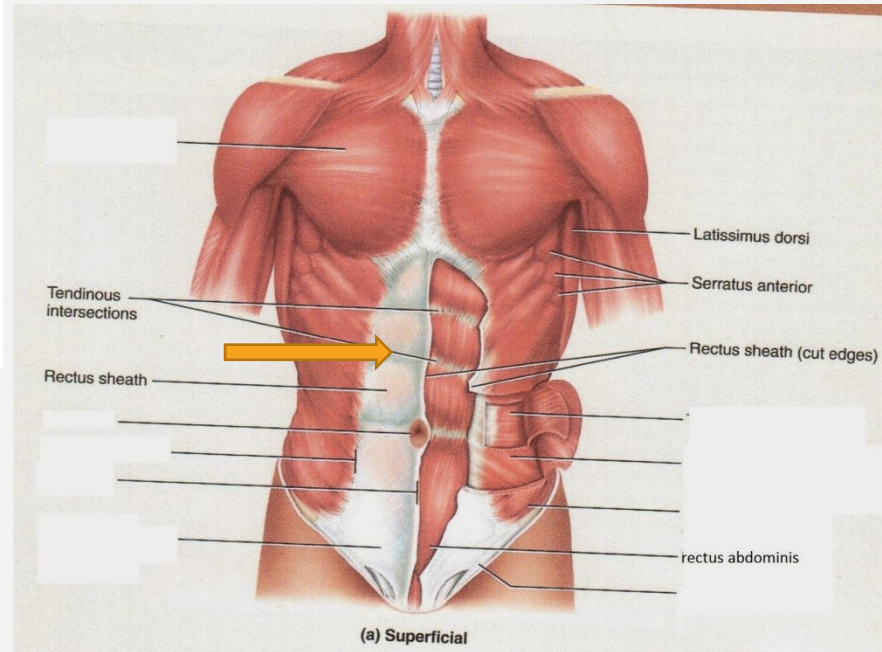
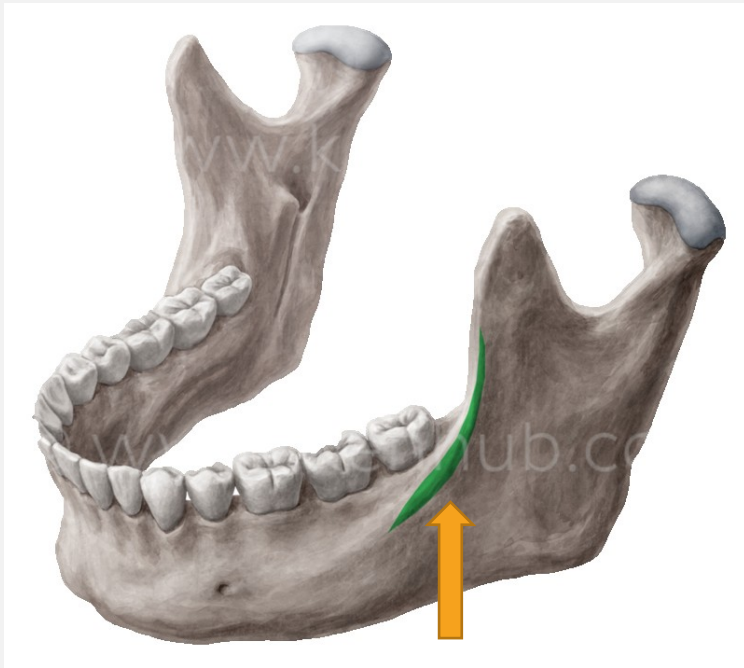
EXTERNAL ILIAC ARTERY? ARCH OF AORTA?



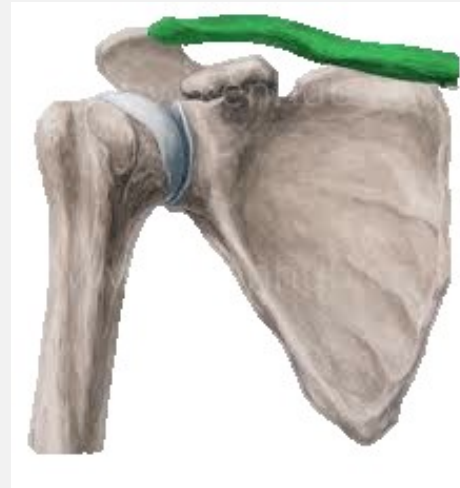
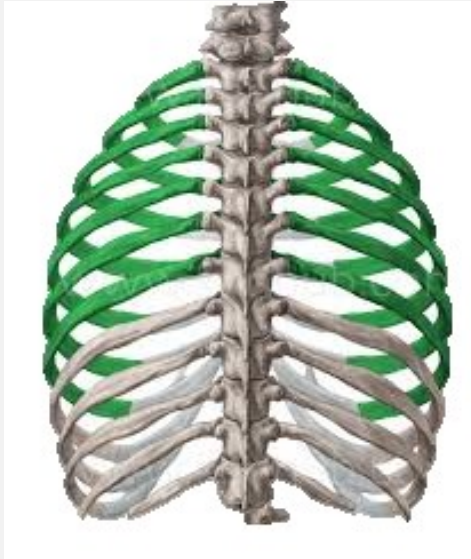
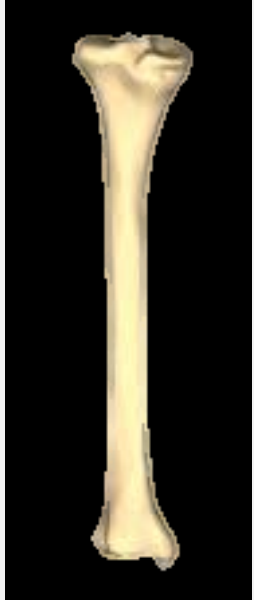
APERTURE OF PELVIS? MEDIAL RHAPHE?
THORACIC APERTURE?



ILIAC CREST?
RIDGES OF SKIN (DERMAL
RIDGES)?
PUBIC CREST?



OBLIQUE LINE OF LOWER
JAW?
WHITE LINE?



RIGHT TIBIAL BONE? RIGHT COLLAR
BONE?

TRUE RIBS?

LEFT ULNAR BONE?



LEFT LOWER JAW?
RIGHT FIBULA?
SPINE OF RIGHT SHOULDER BLADE?
THORACIC VERTEBRAS?

ORDINAL NUMBERS

primus, a, um

secundus, a, um

tertius, a, um

quartus, a, um

quintus, a, um

sextus, a, um

septimus, a, um

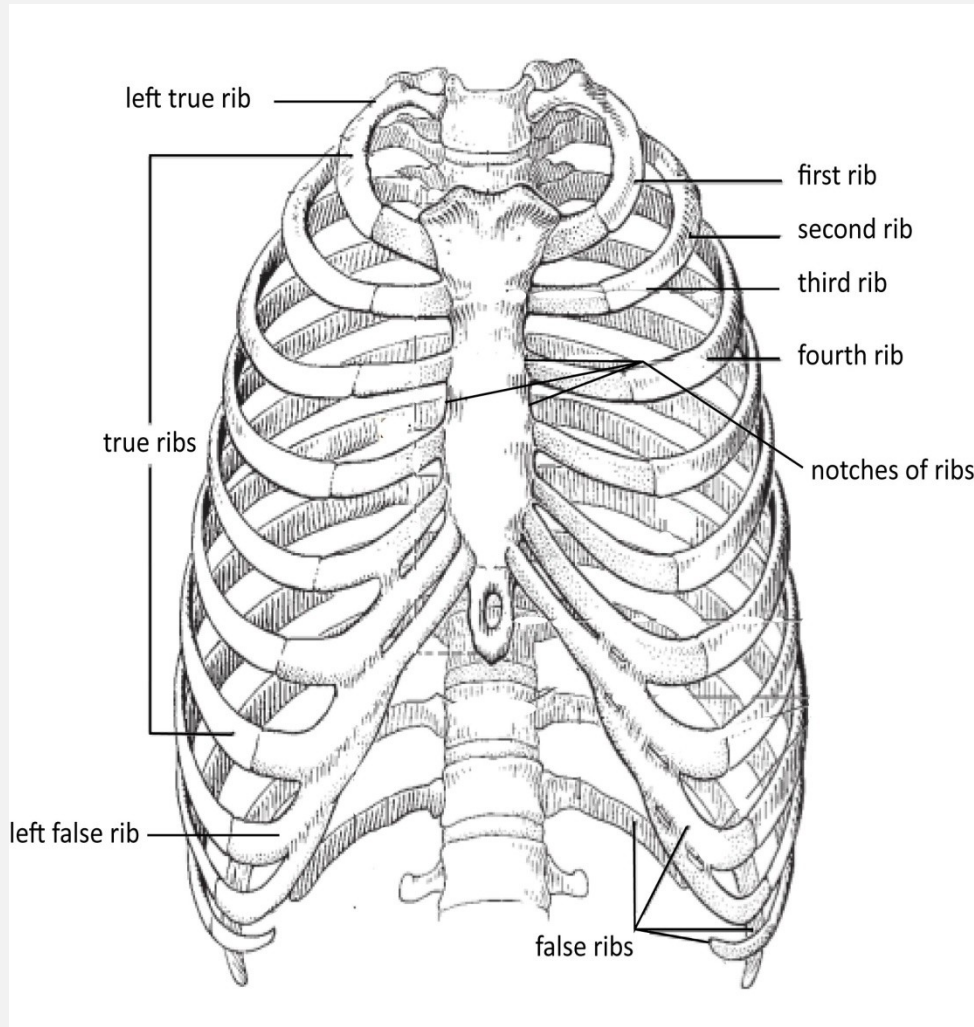
octavus, a, um

nonus, a, um

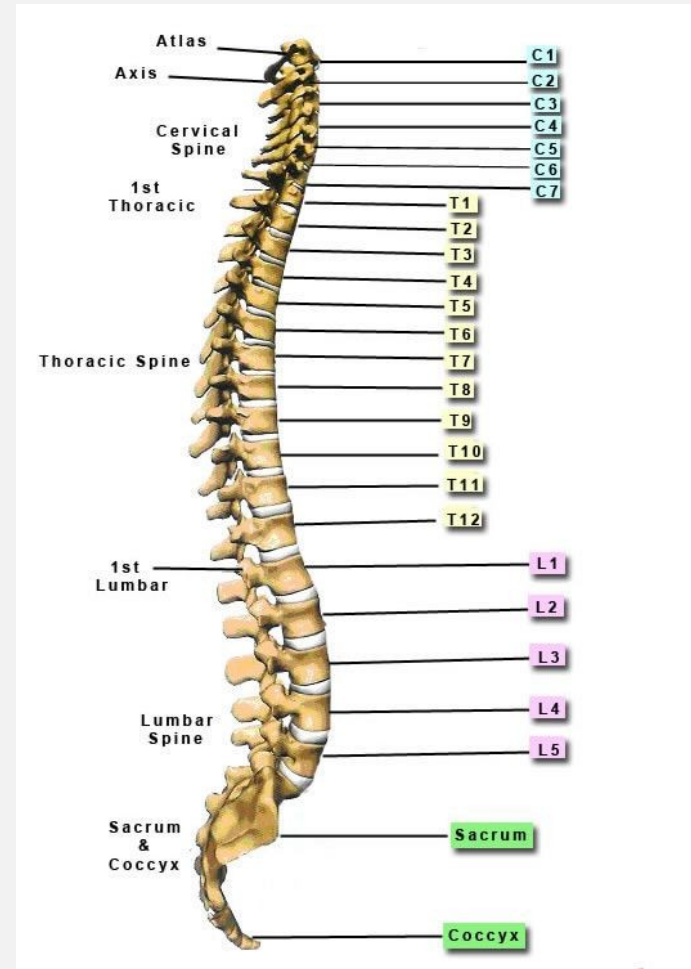
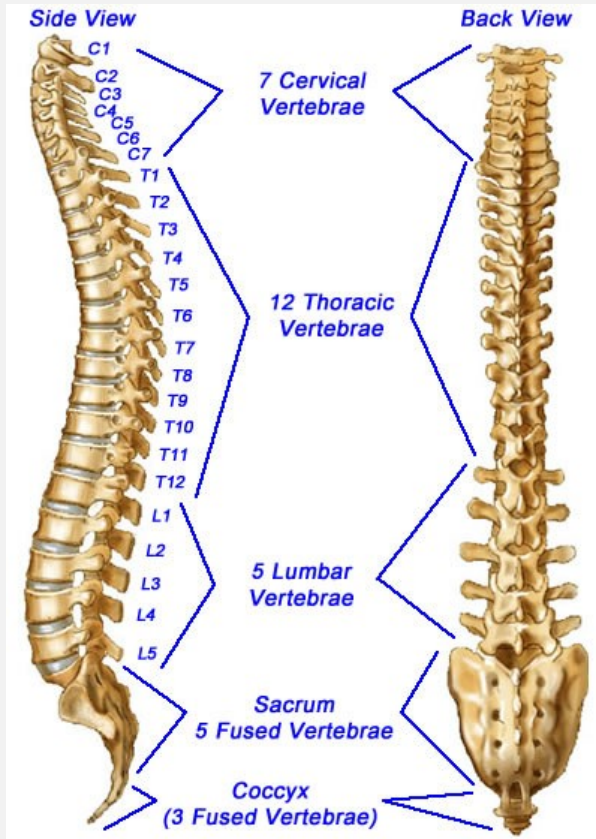
decimus, a, um

undecimus, a, um

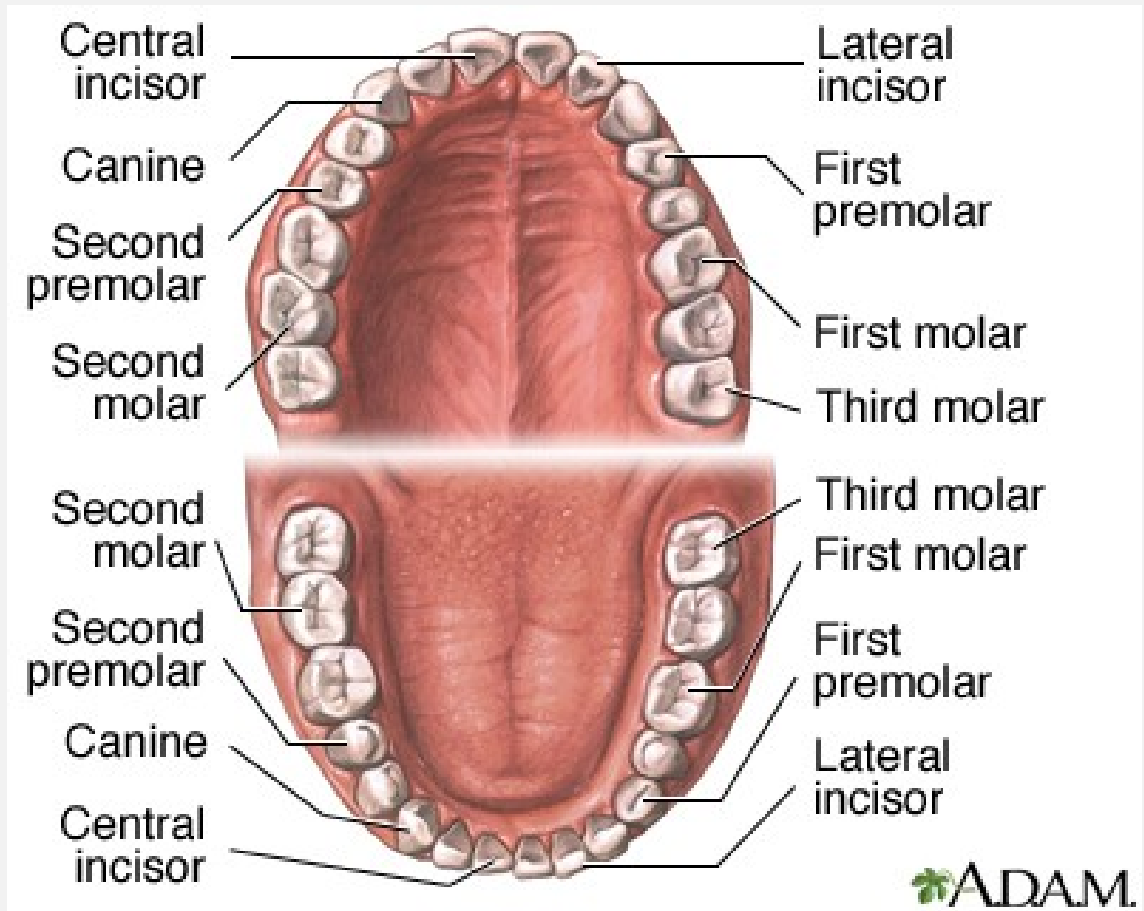
duodecimus, a, um



RIBS



VERTEBRAE



TEETH



FINGERS

2ND DECLENSION

Latin

Greek

II.			
nervus	septum	<i>nephros</i>	<i>colon</i>
m.	n.	m.	n.
-us/-er	-um	-os	-on
-ī	-ī	-ī	-ī
-um	1	-on	1
-ō	-ō	-ō	-ō
-ī	-a	-ī	-a
-ōrum	-ōrum	-ōrum	-ōrum
-ōs	1	-ōs	1
-īs	-īs	-īs	-īs

TYPICAL ENDINGS IN NOM. SG.

-US/-ER (Latin) / -OS (Greek)

Gender M (F)

-UM (Latin) / -ON (Greek)

Gender N

Gen. sg. -I

Nouns of female gender in this declension are exceptions:

methodus, i, f.

periodus, i, f.

diameter, tri, f.