

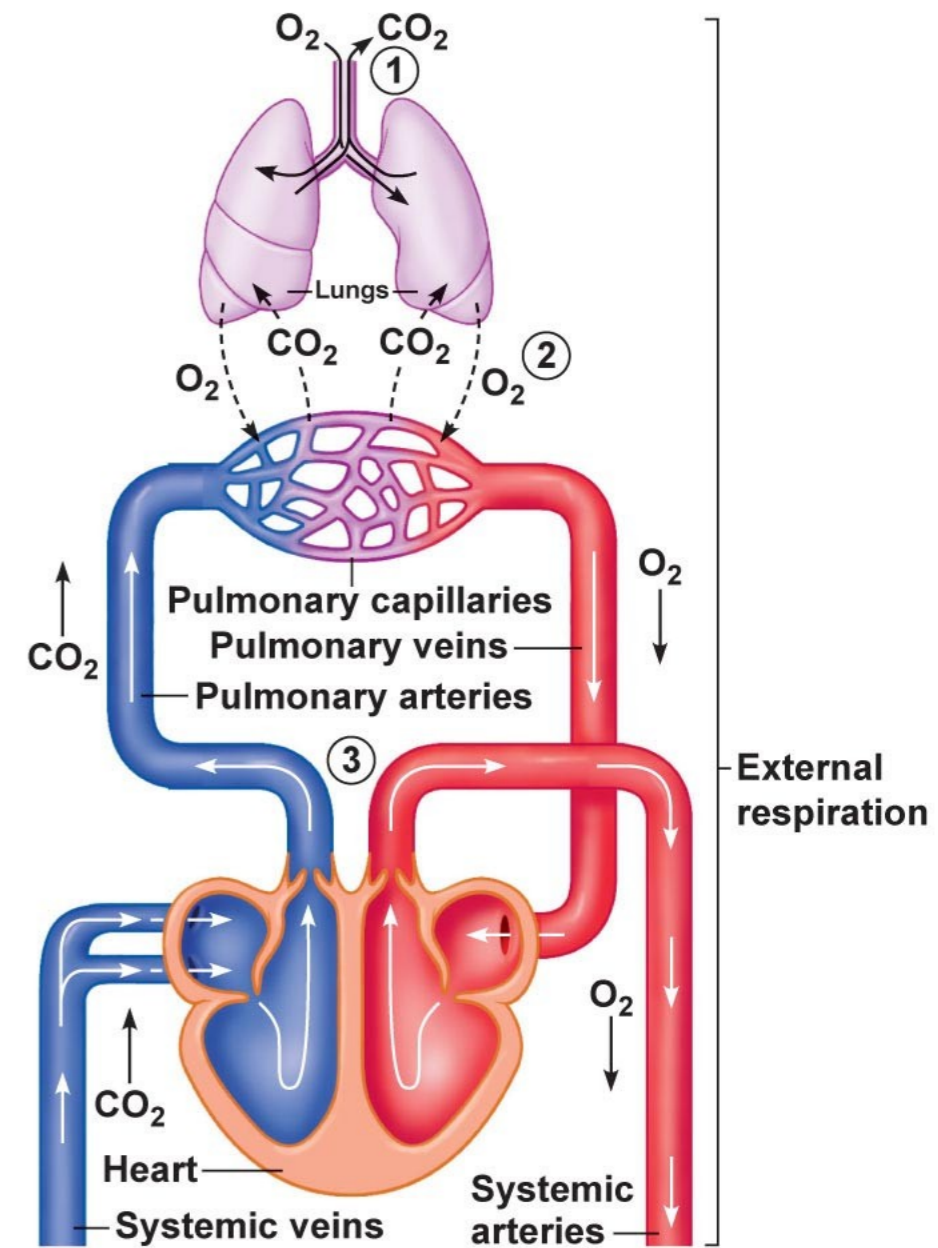
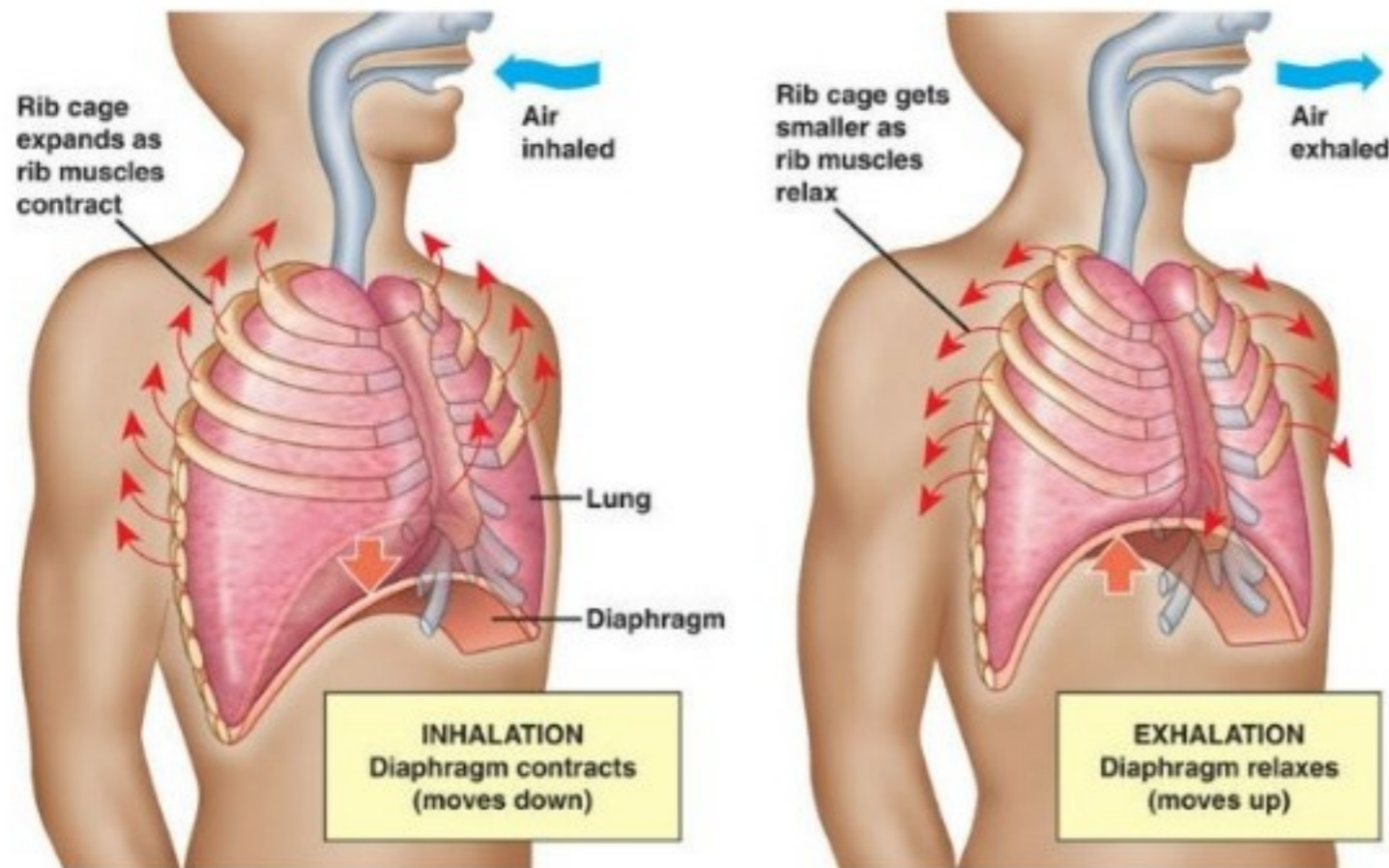
Poranění hrudníku

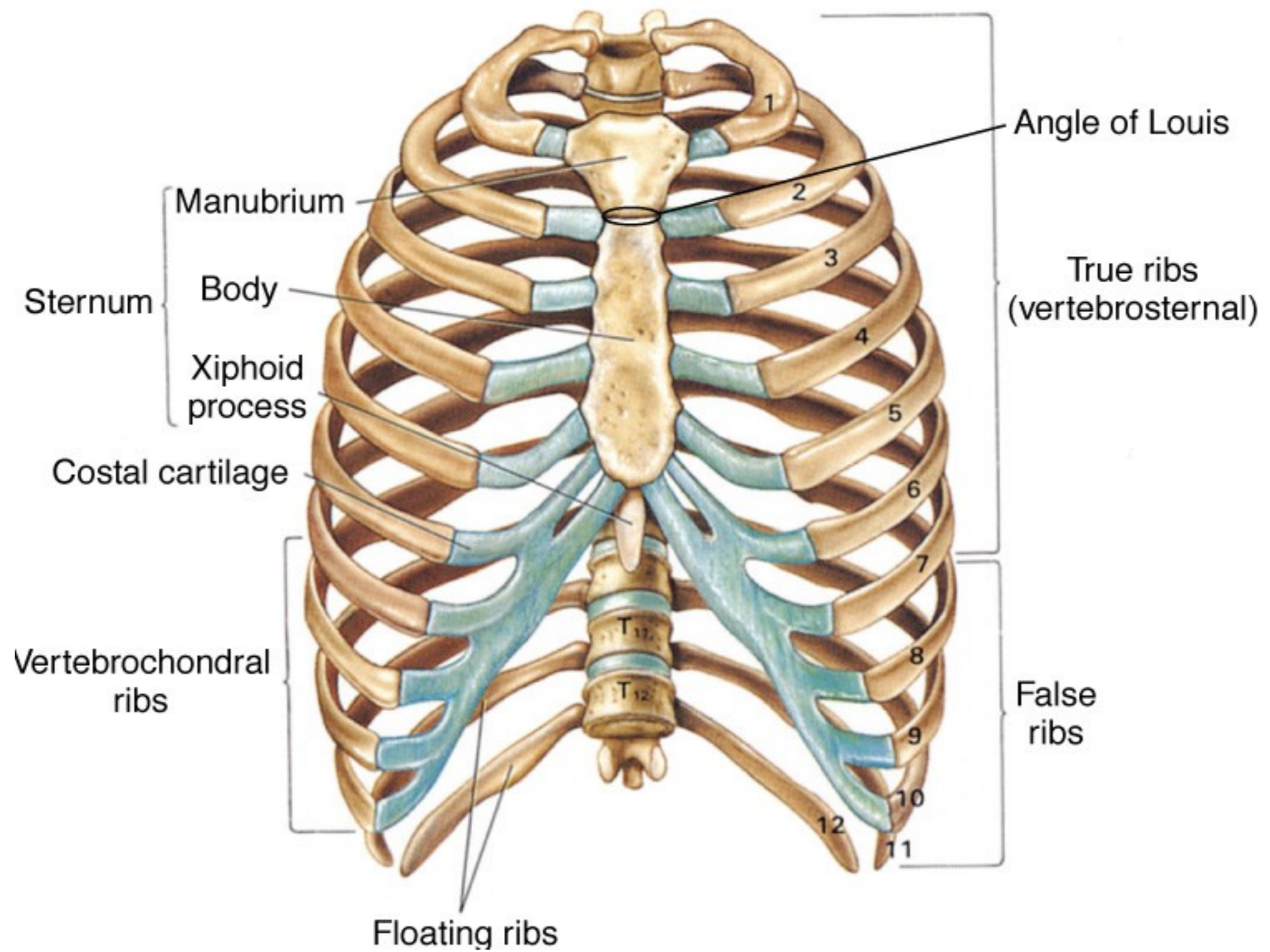
MUDr. Martin Chovanec

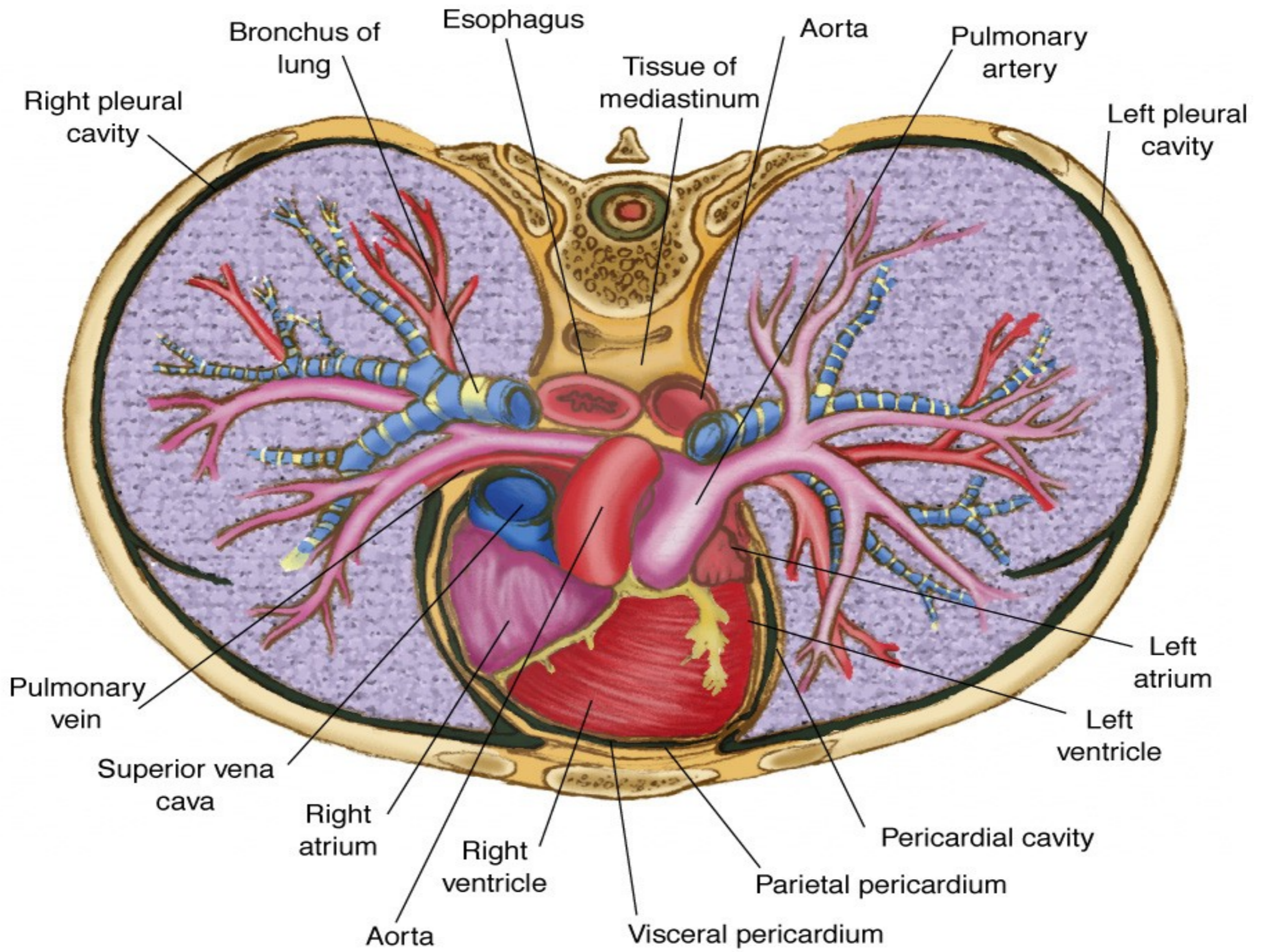
DKlinika úrazové chirurgie, Fakultní nemocnice Brno

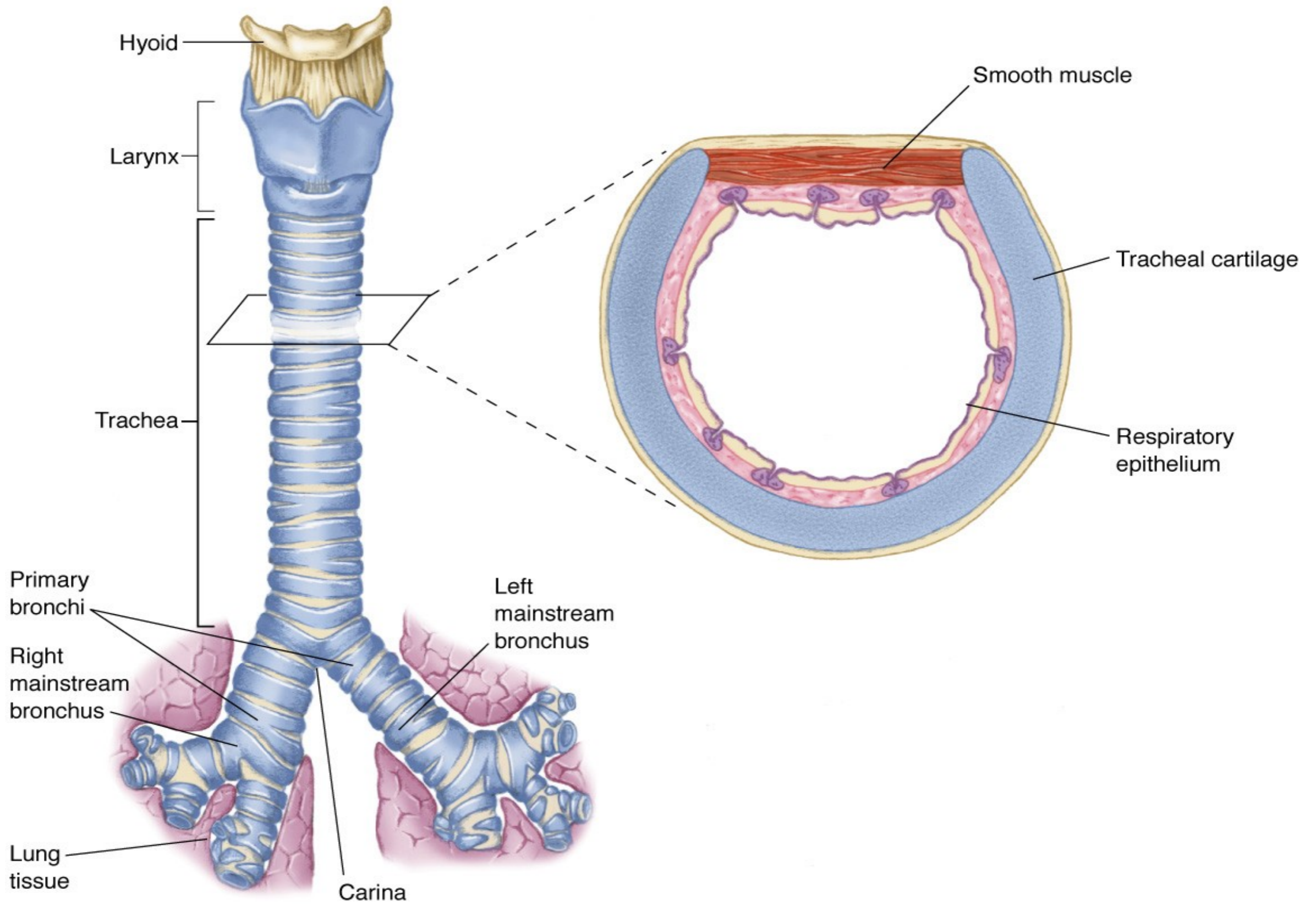


Ventilance vs. respirace

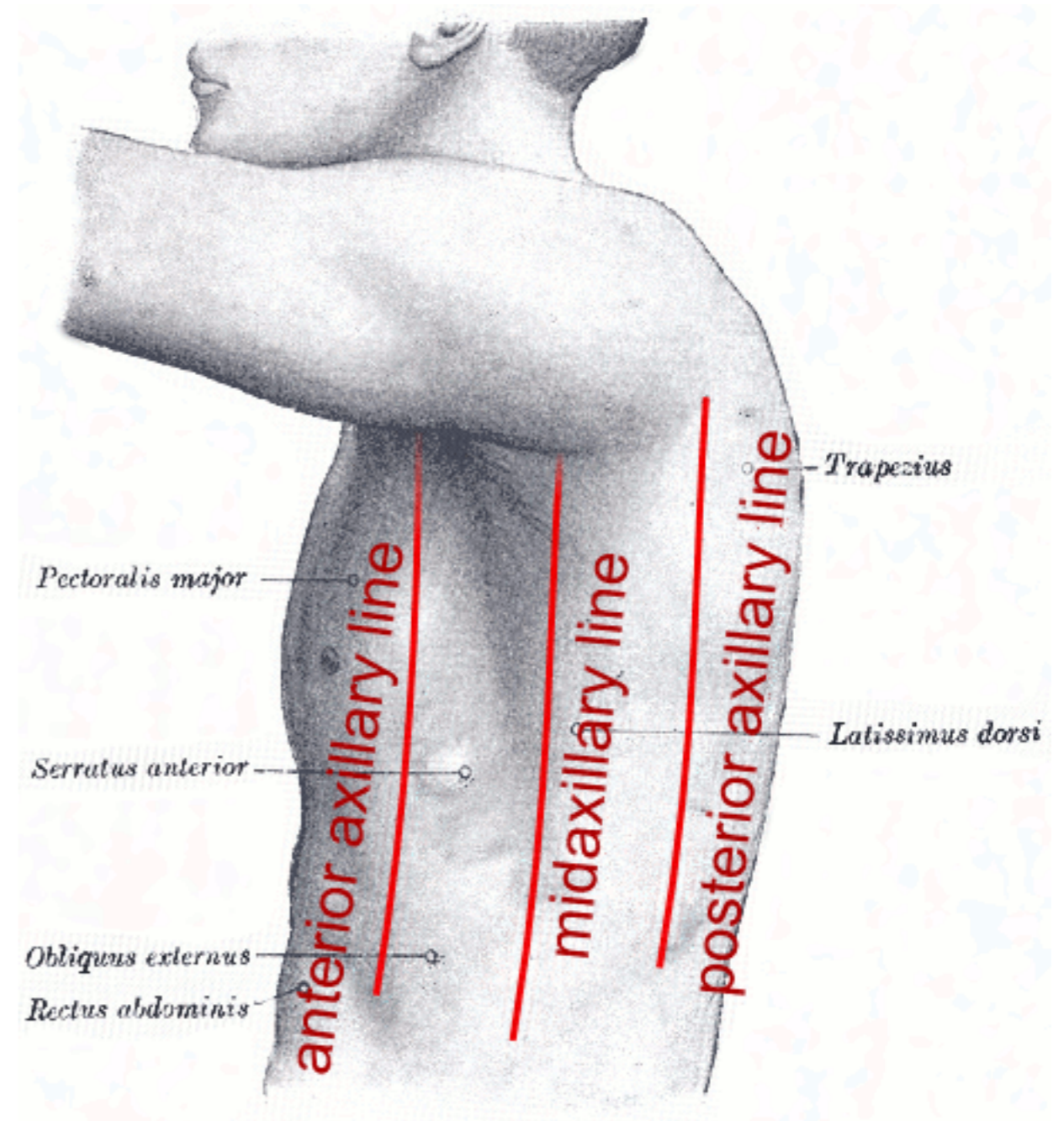
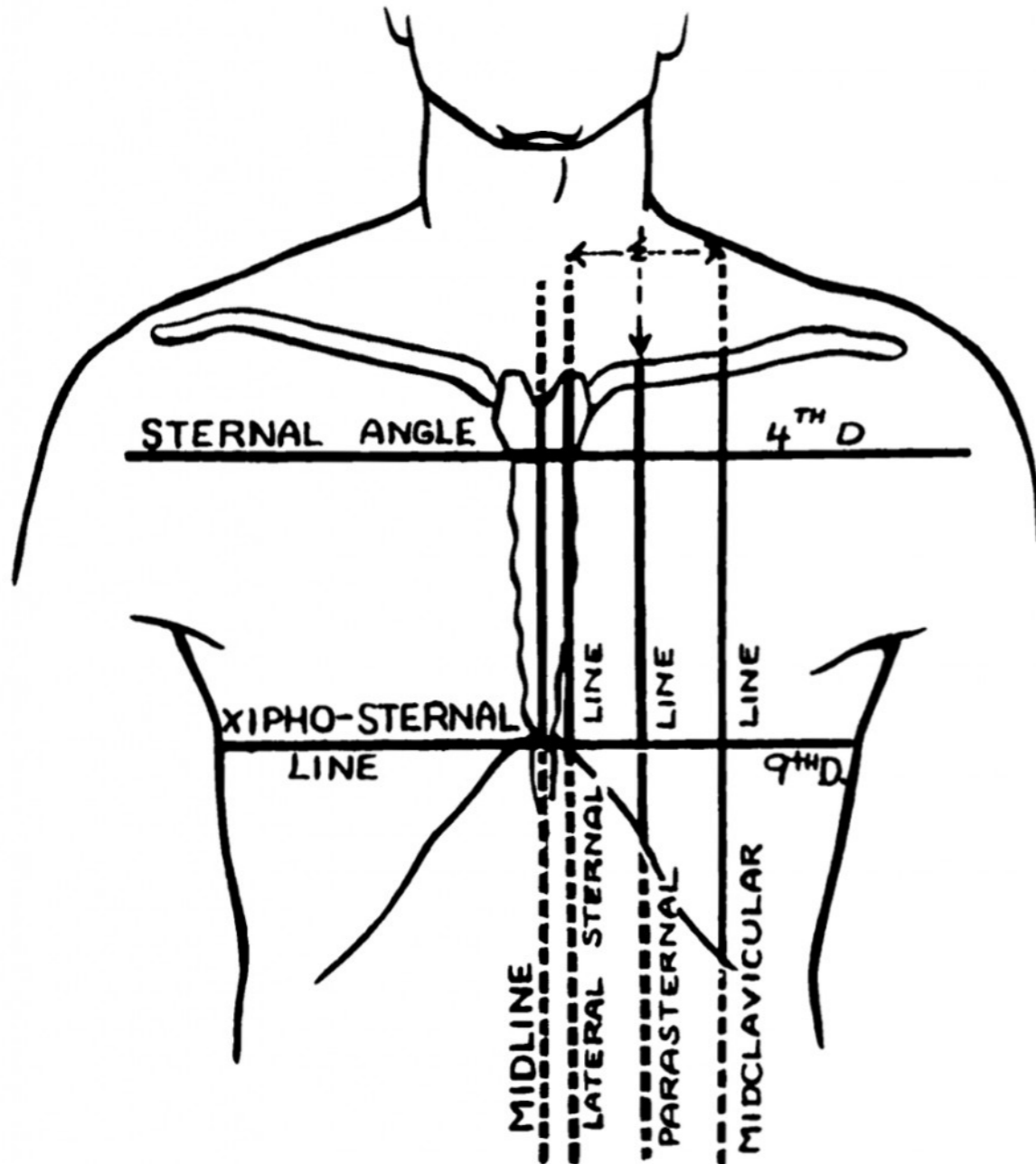




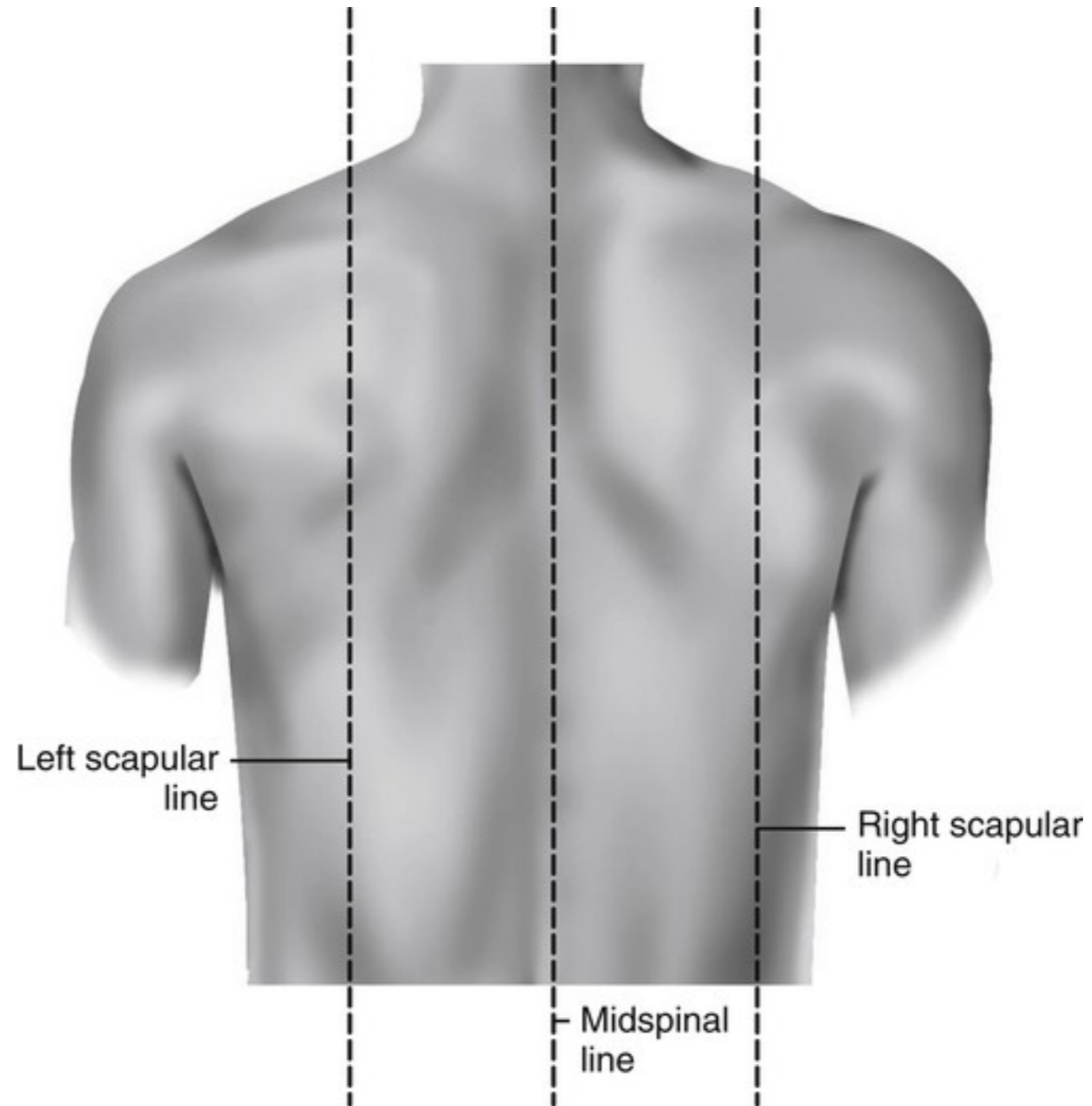




Topografie

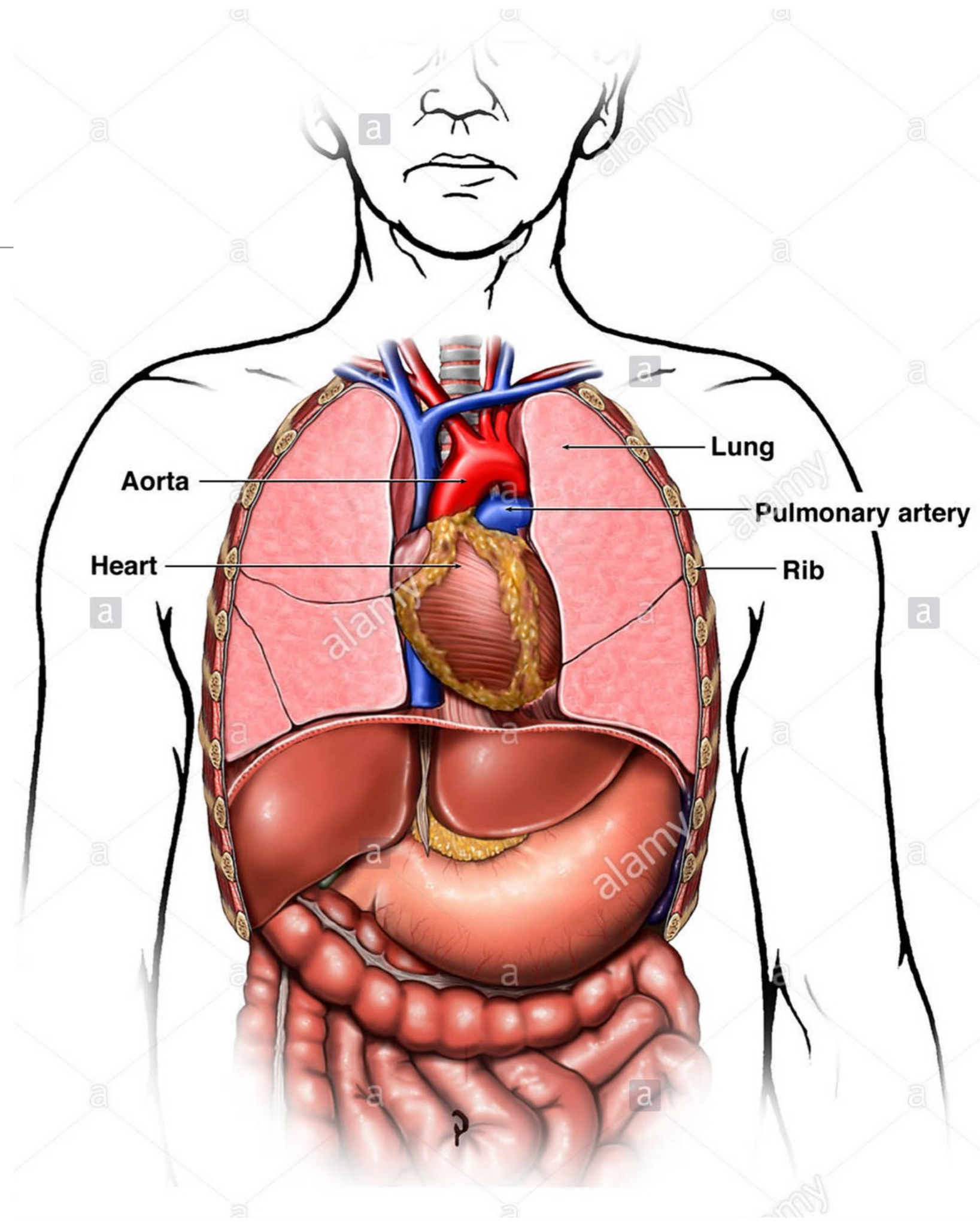


Topografie



Důležité struktury

- srdce
- plíce
- velké cévy
- trachea a bronchiální strom
- žebra
- sternum, Th páteř

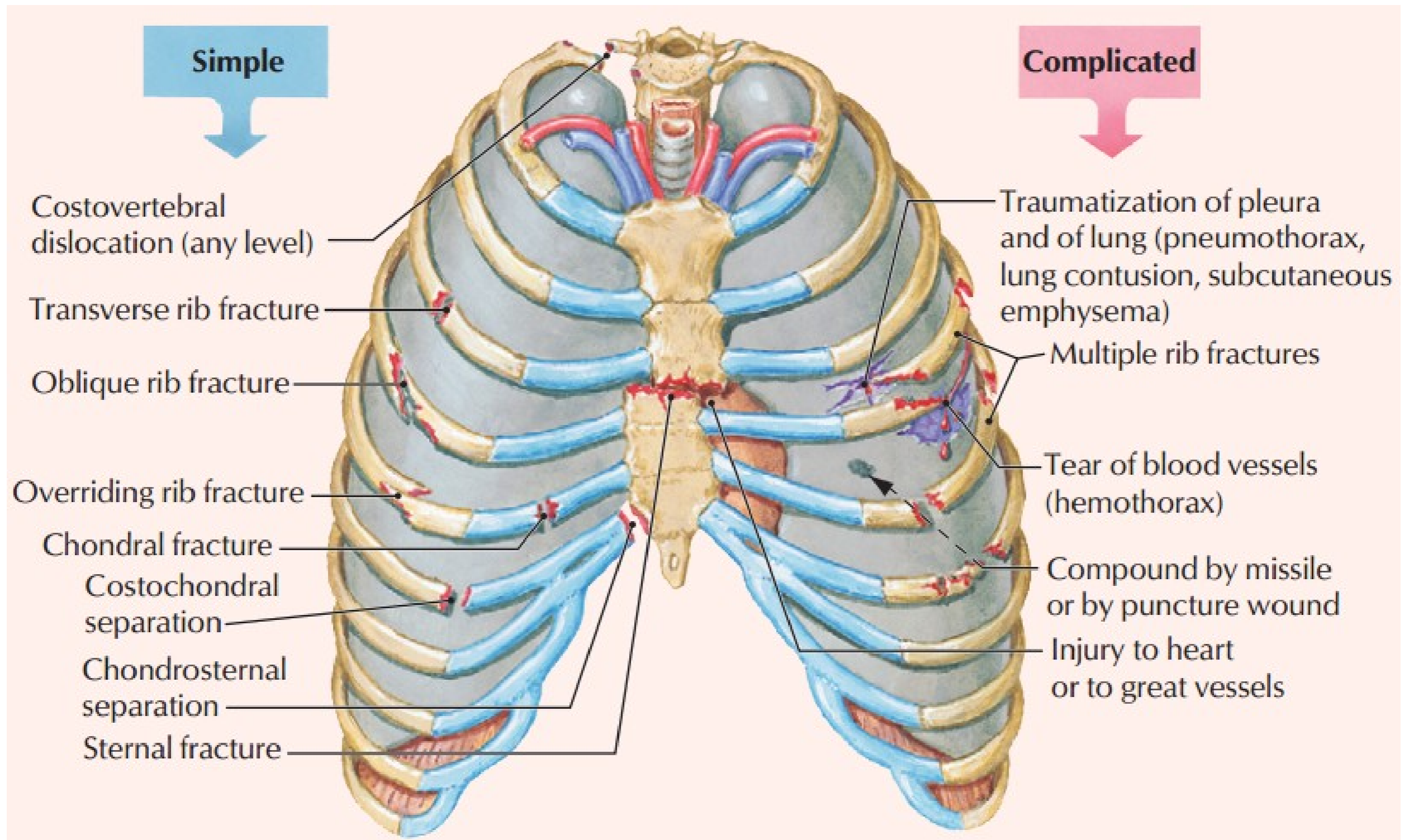


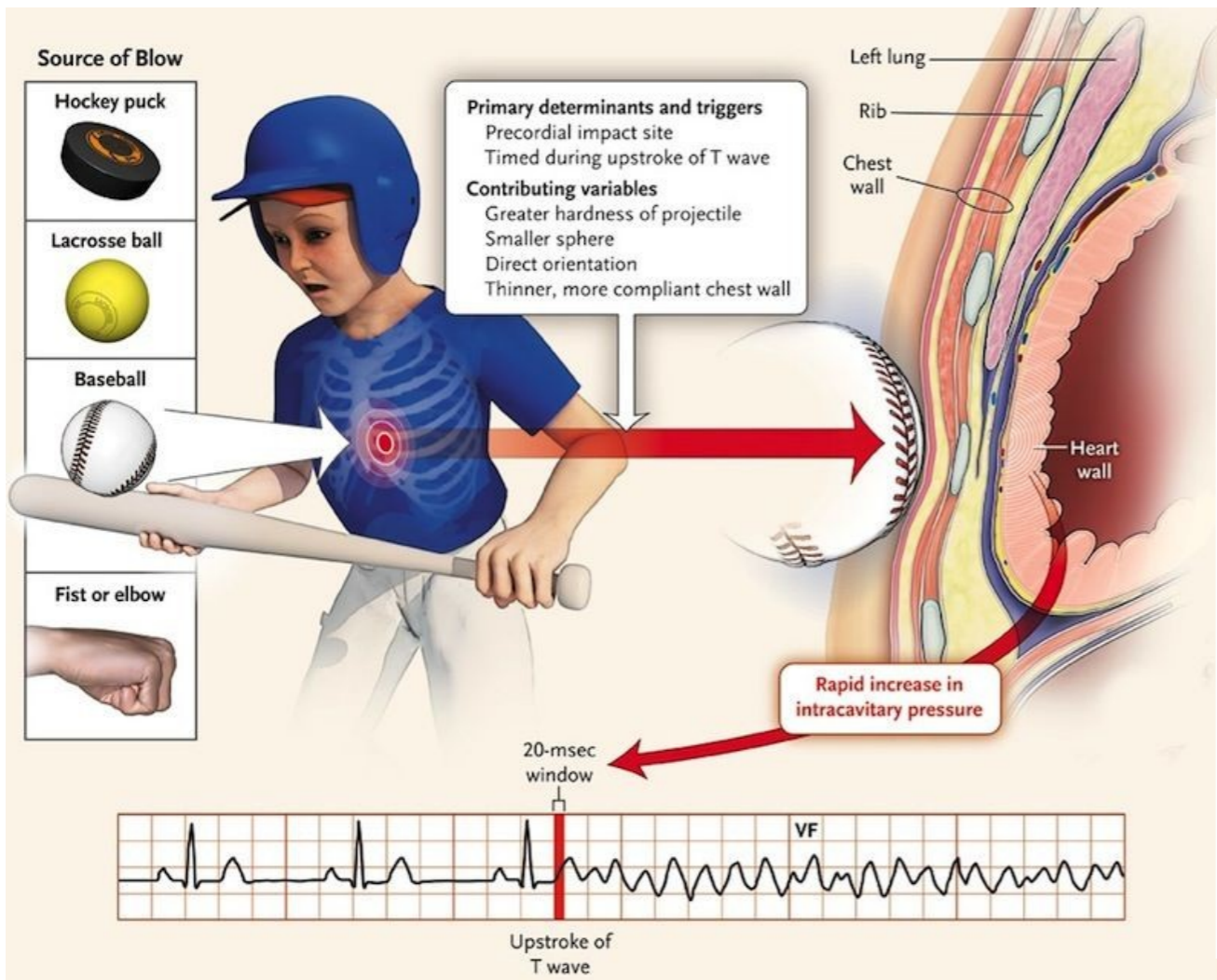
Sdružené poranění

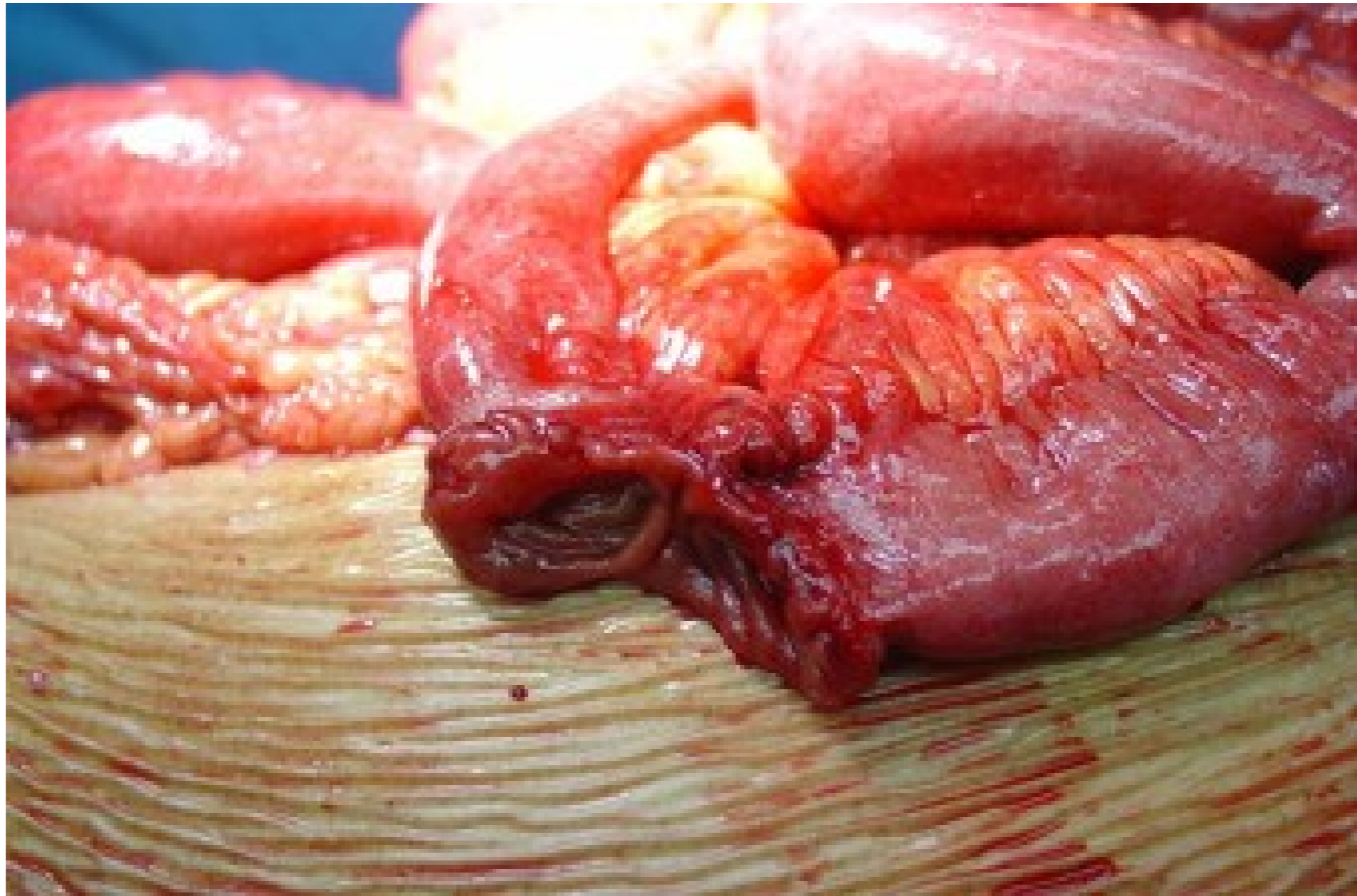
- poranění hrudníku často provázeno poranění orgánů v DB
- rozdělení poranění
 - ostré (penetrující/nepenetrující)
 - tupé - majorita



Poranění hrudníku - přehled

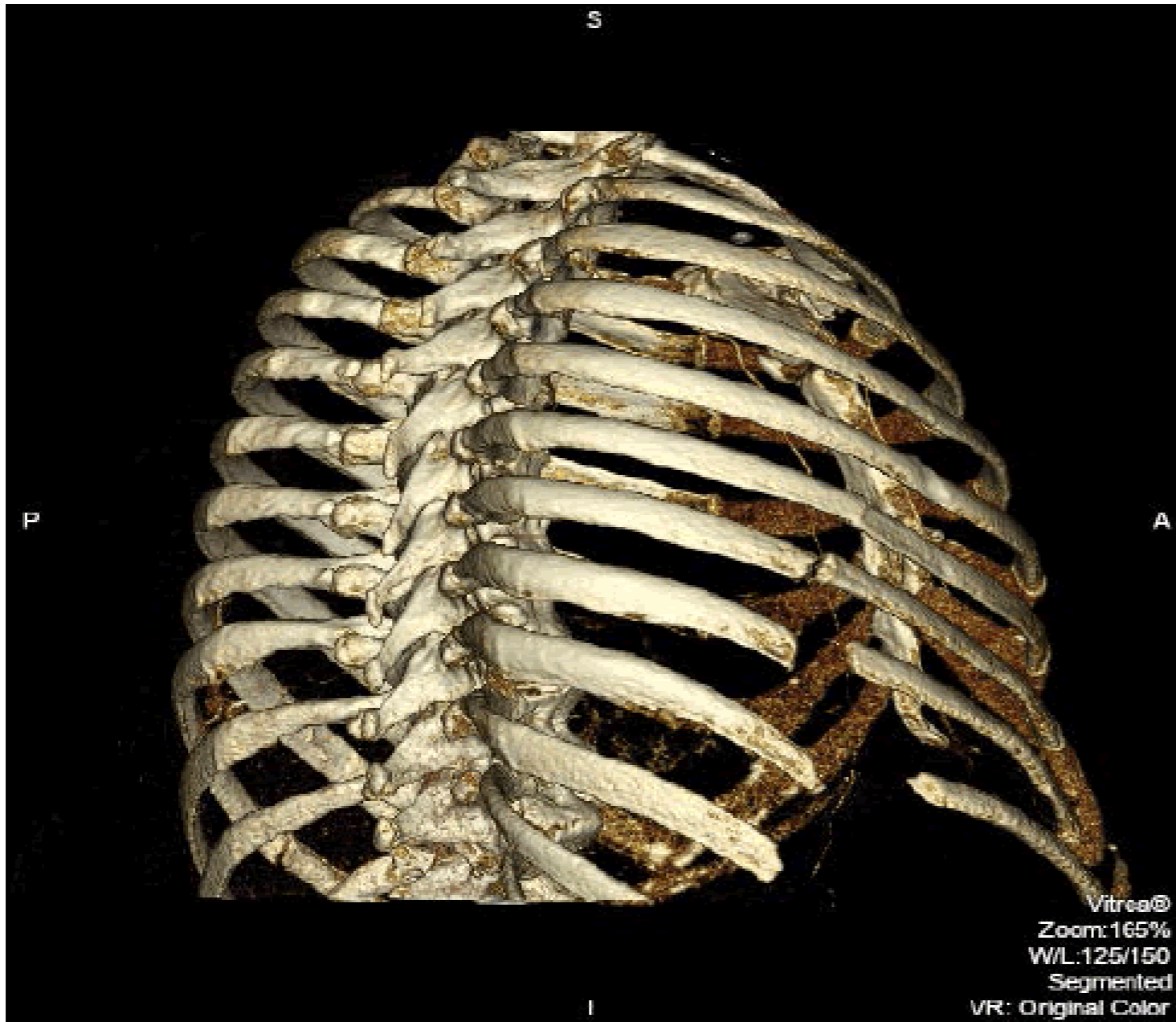








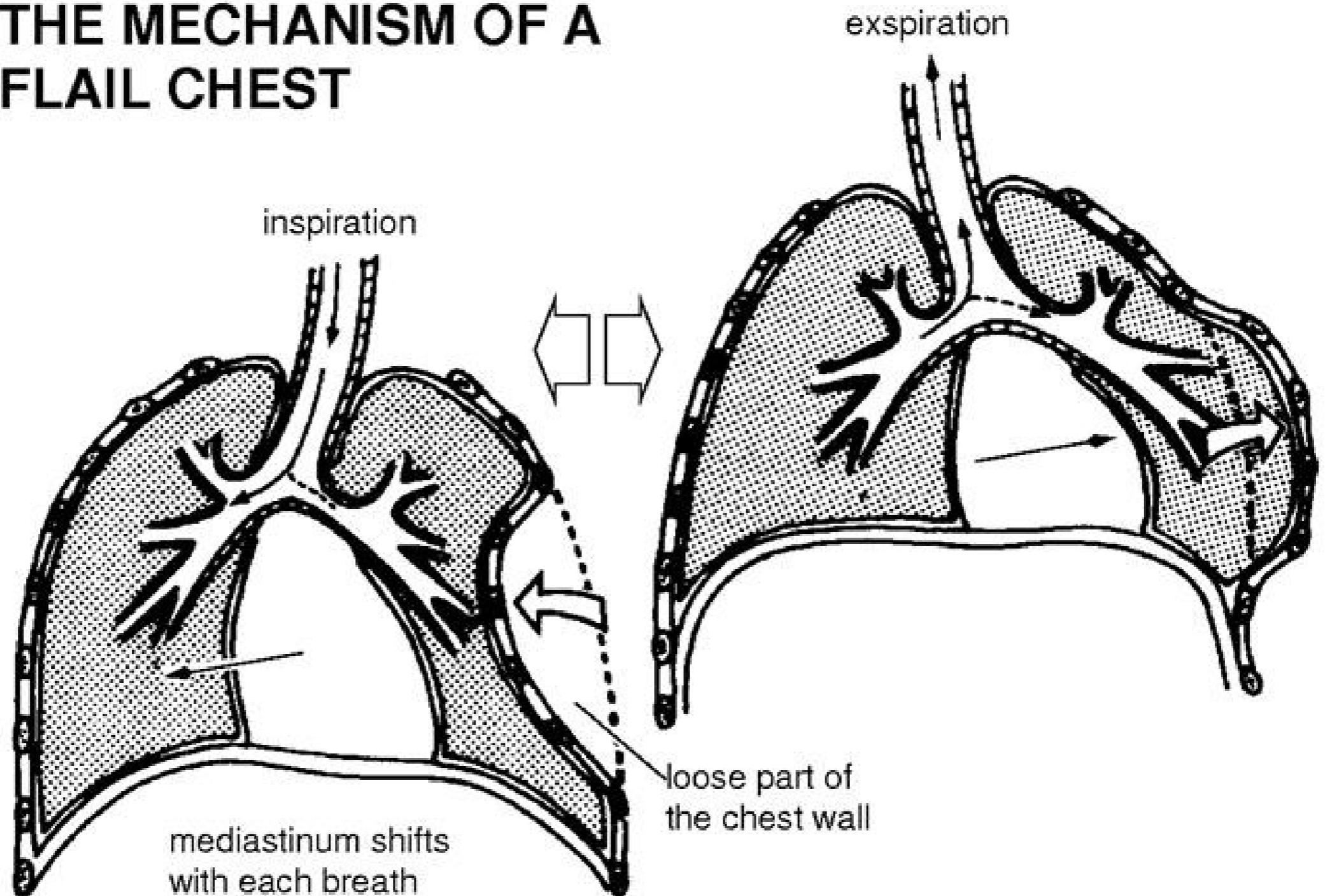
Zlomeniny žeber



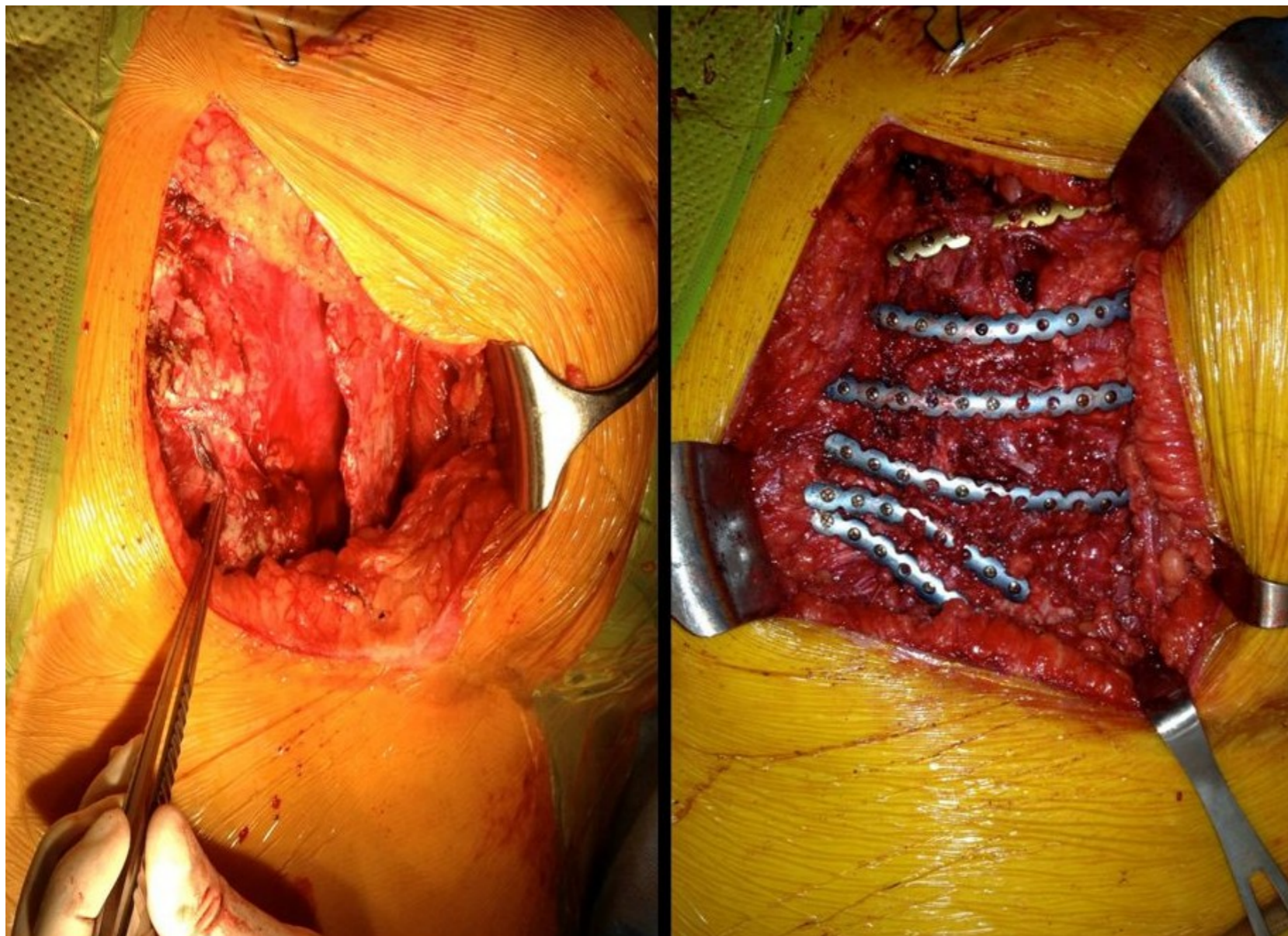
- jednoduchá vs sériová fr. žeber
- dvířková zlomenina žeber
- vlající hrudník/mediastinum
- zlomenina sternu často v koincidenci s fr. Thp (předozadní násilí)

Flail chest

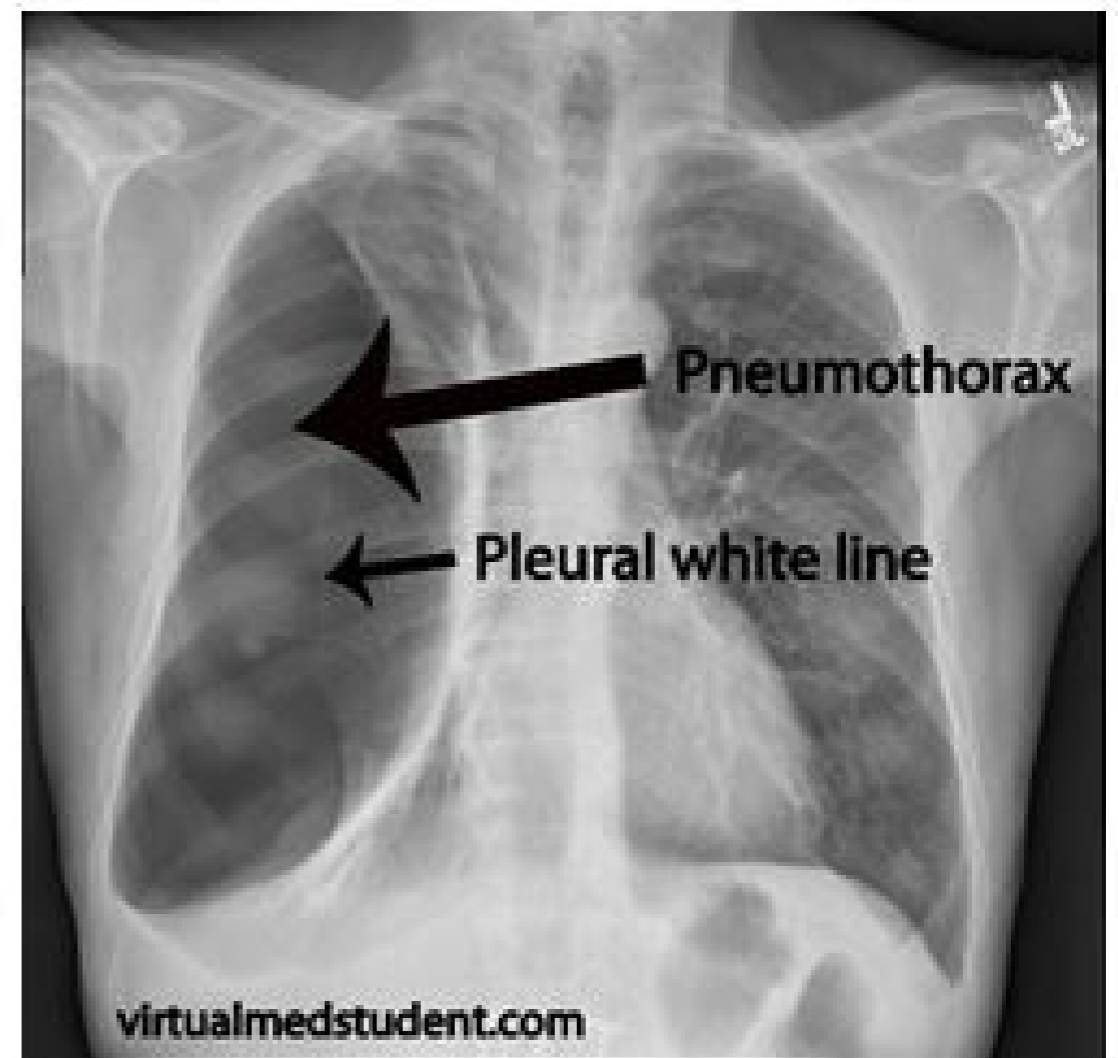
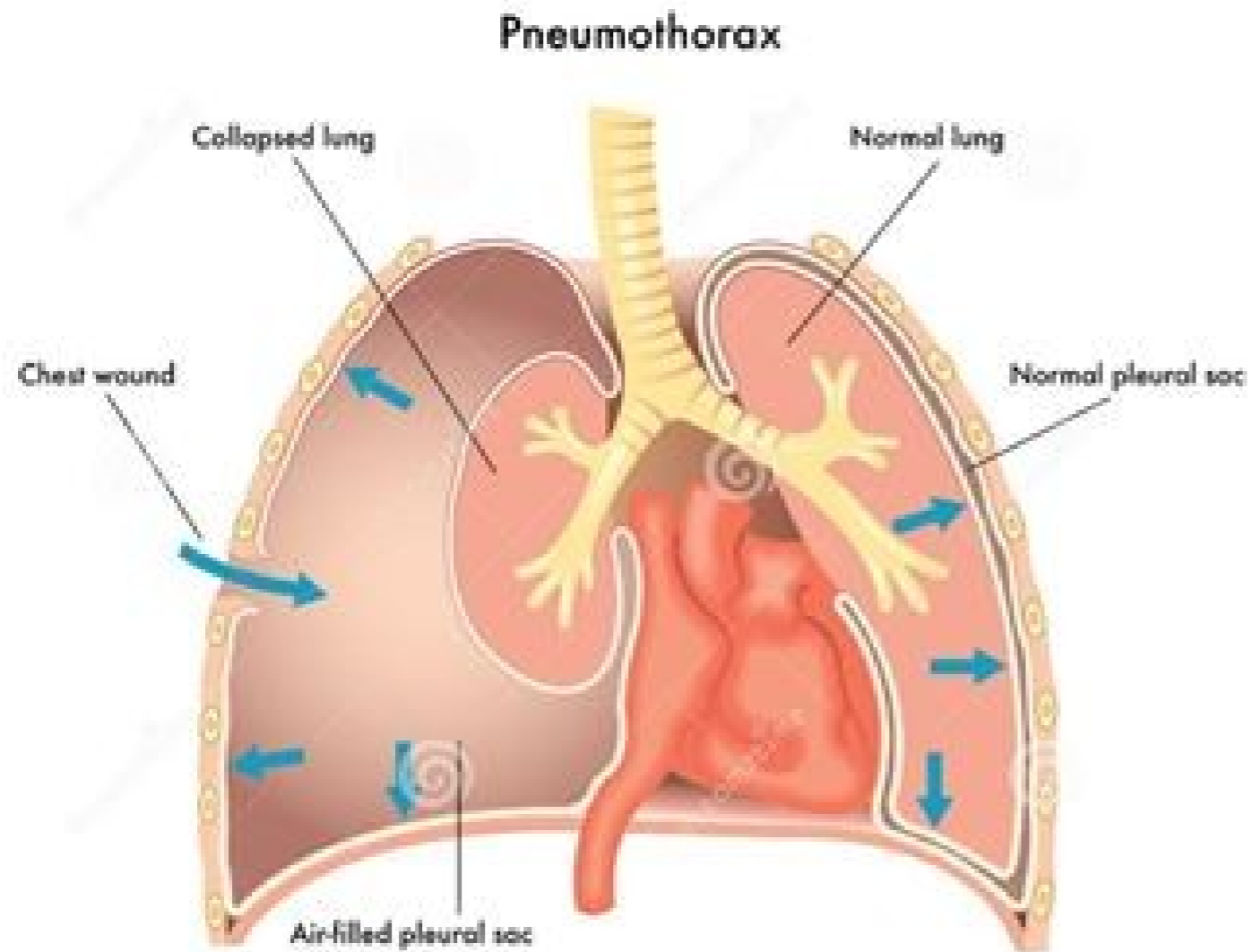
THE MECHANISM OF A FLAIL CHEST



Stabilizace hrudní stěny

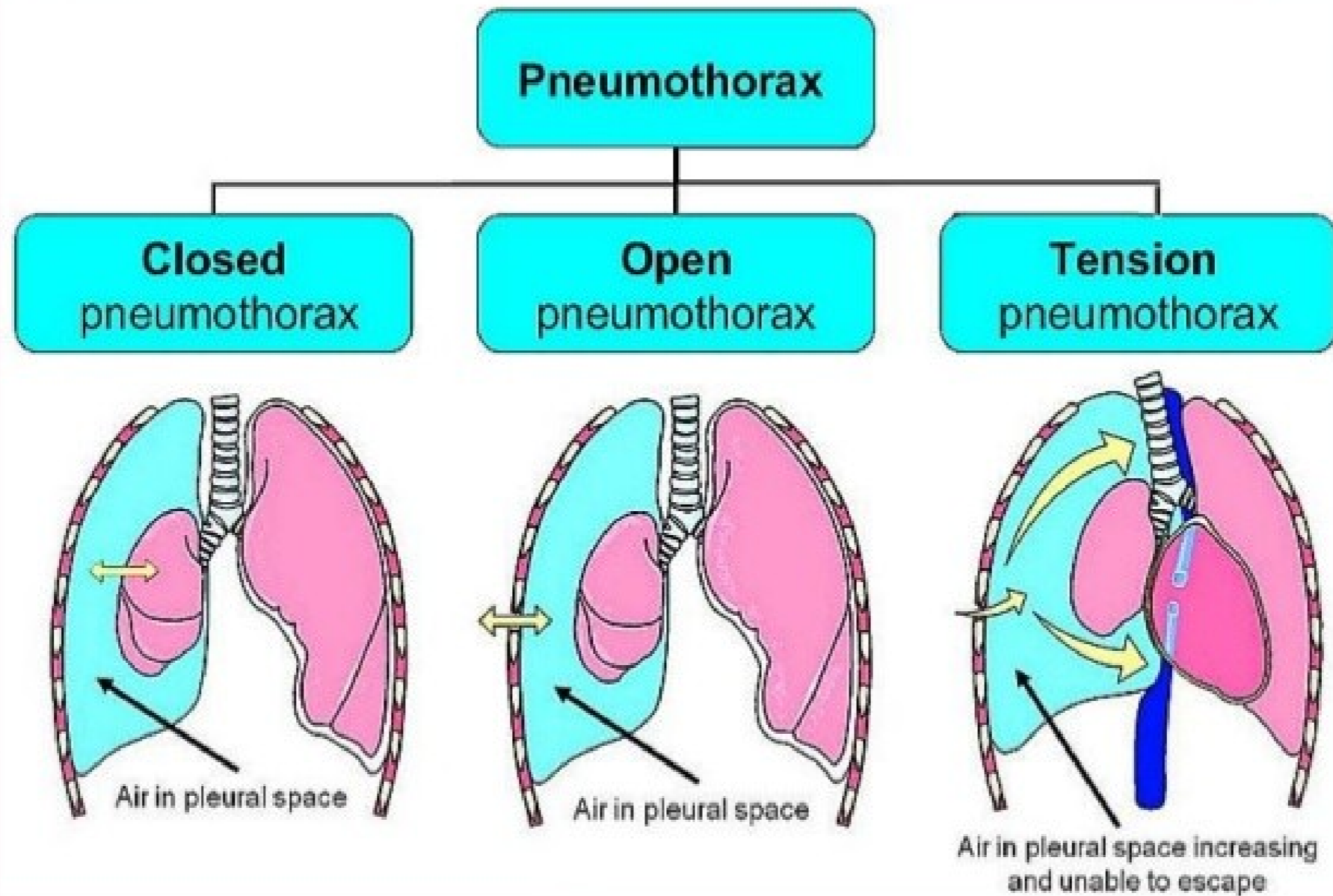


Traumatický pneumothorax

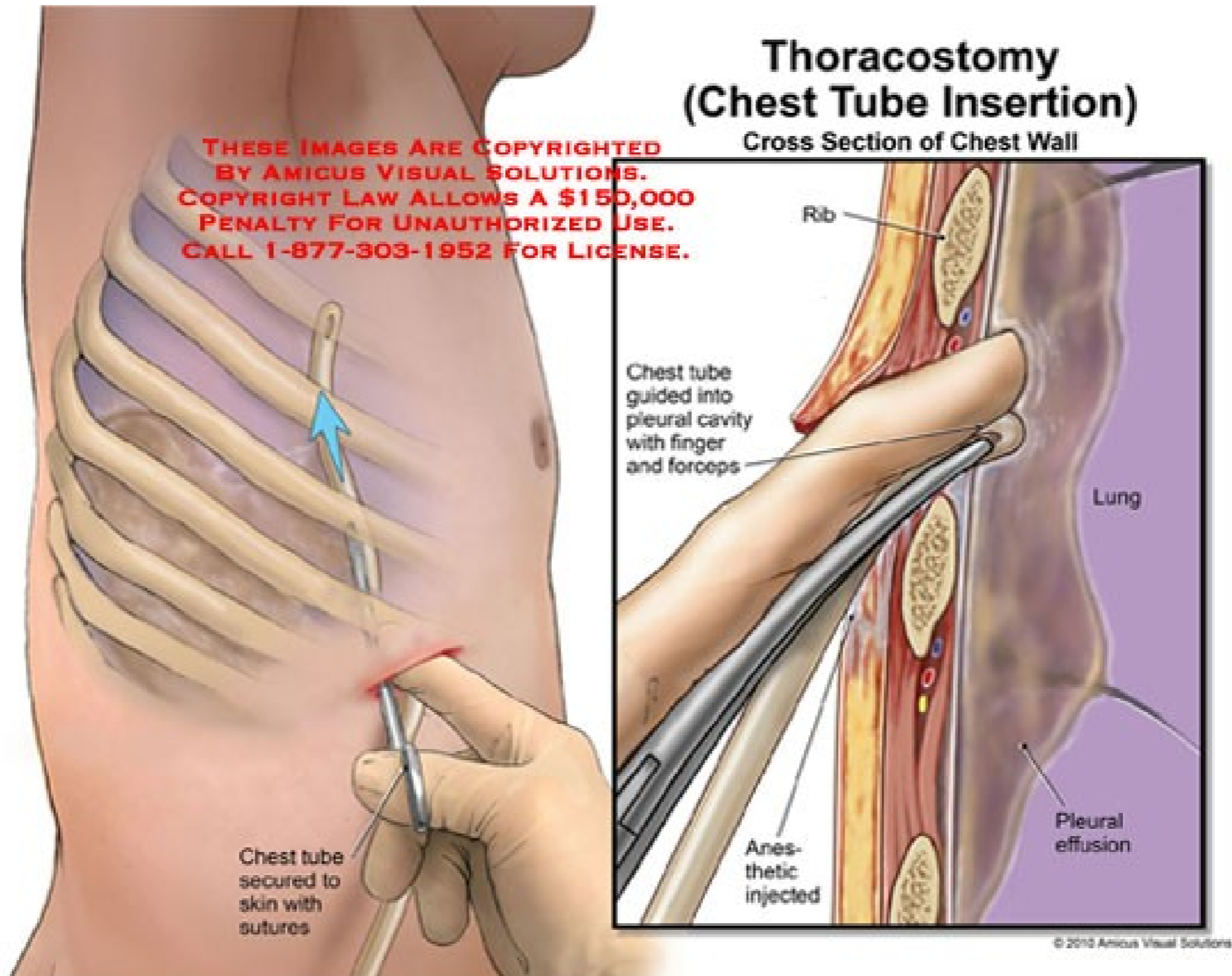


Typy PNO

Pathophysiology



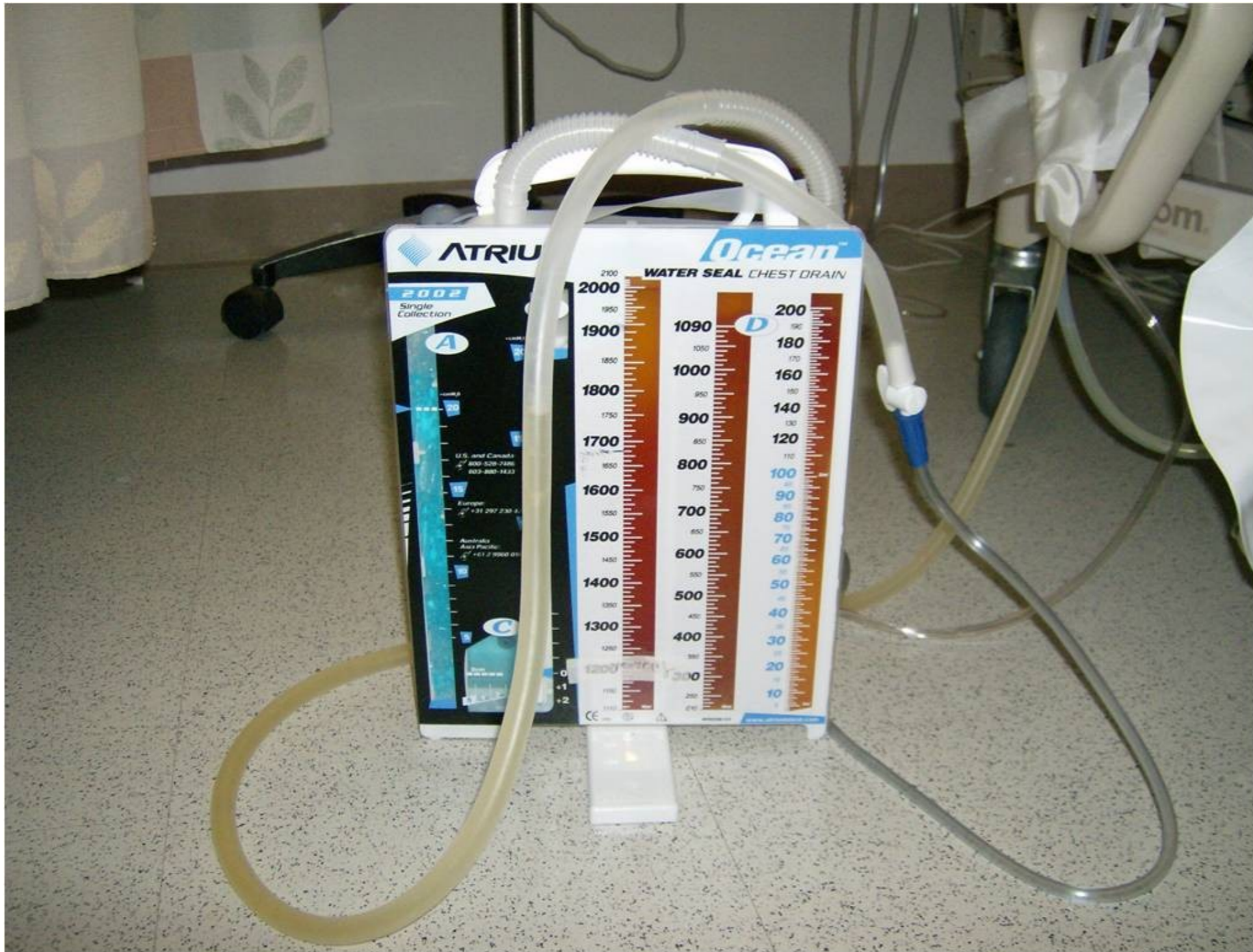
Traumatický pneumothorax



Traumatický pneumothorax



Traumatický pneumothorax



Traumatický hemothorax



Traumatický hemothorax

