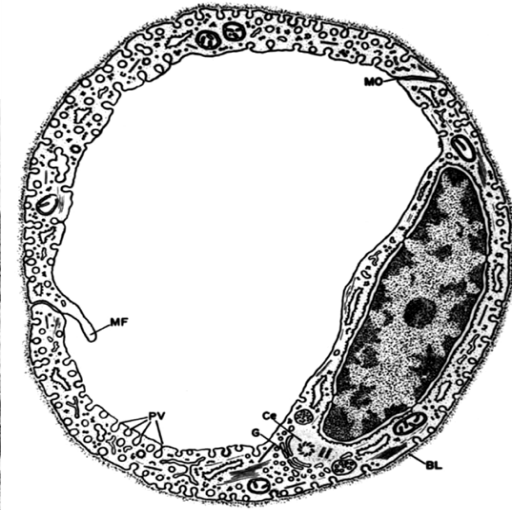
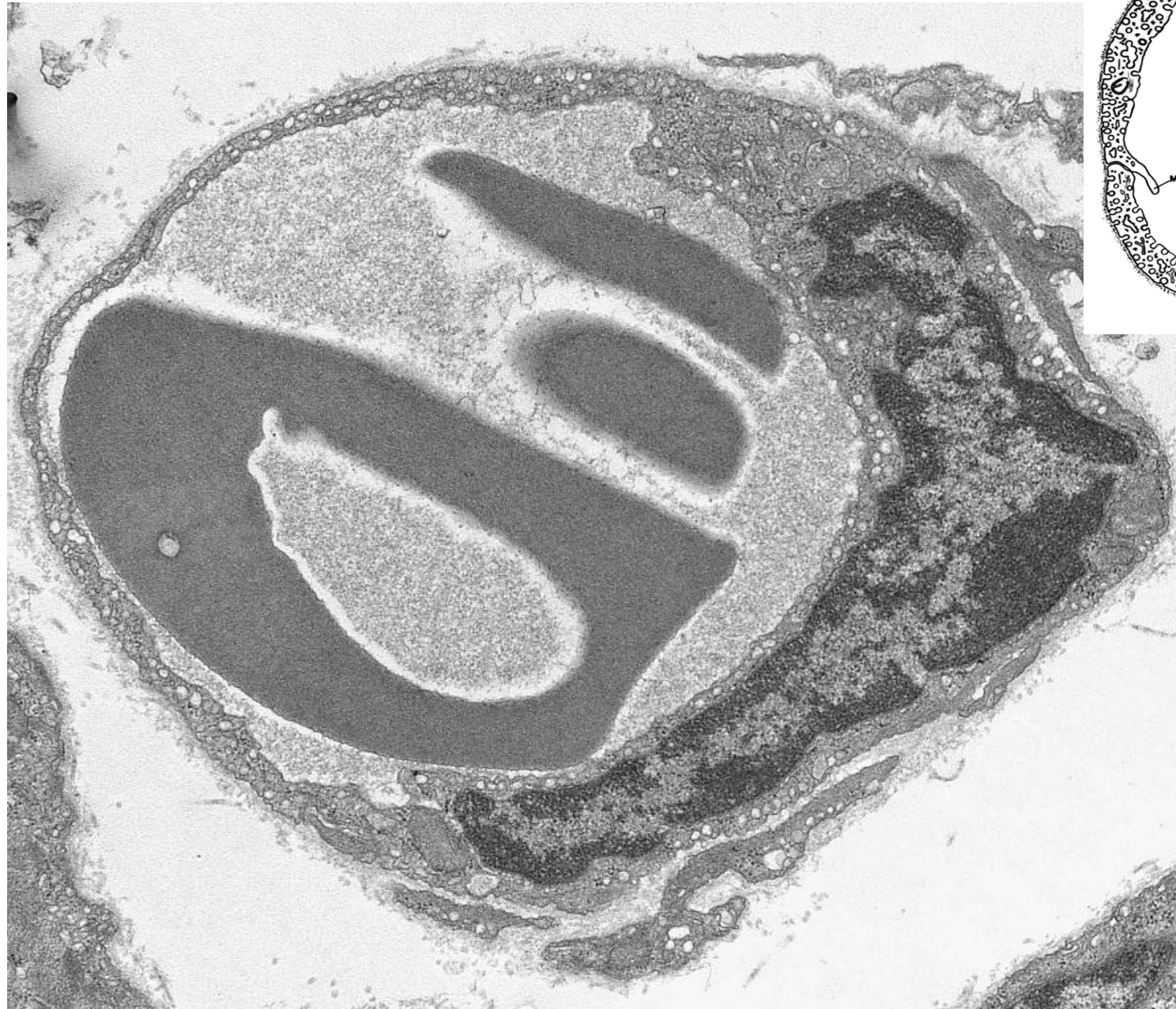




# KARDIOVASKULÁRNÍ SYSTÉM

- Srdce
- Cévy
  - arterie
  - vény
  - kapiláry
    - se souvislou výstelkou
    - fenestrované
    - sinusoidy

# kapilára se souvislou výstelkou

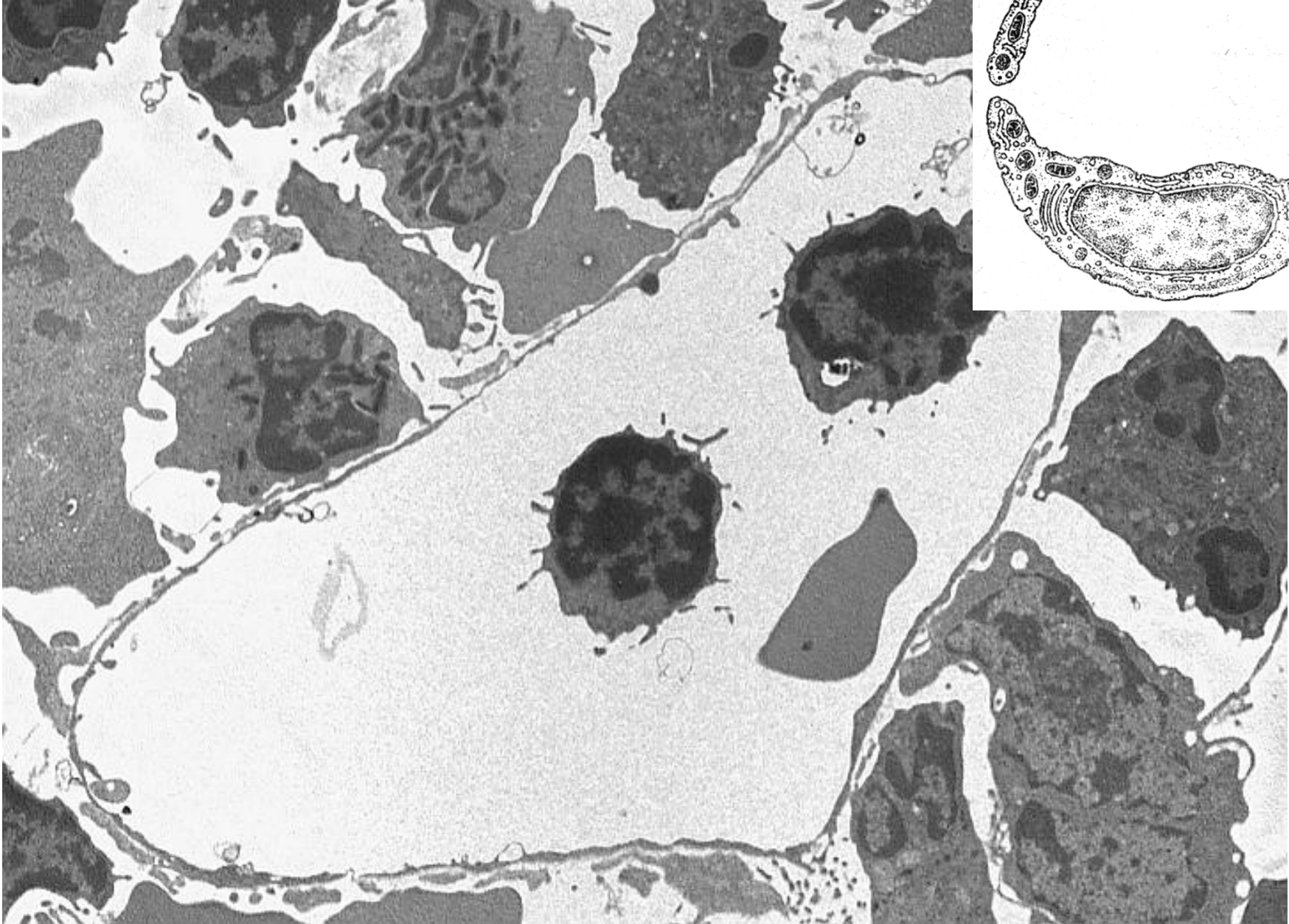




# kapilára fenestrovaná

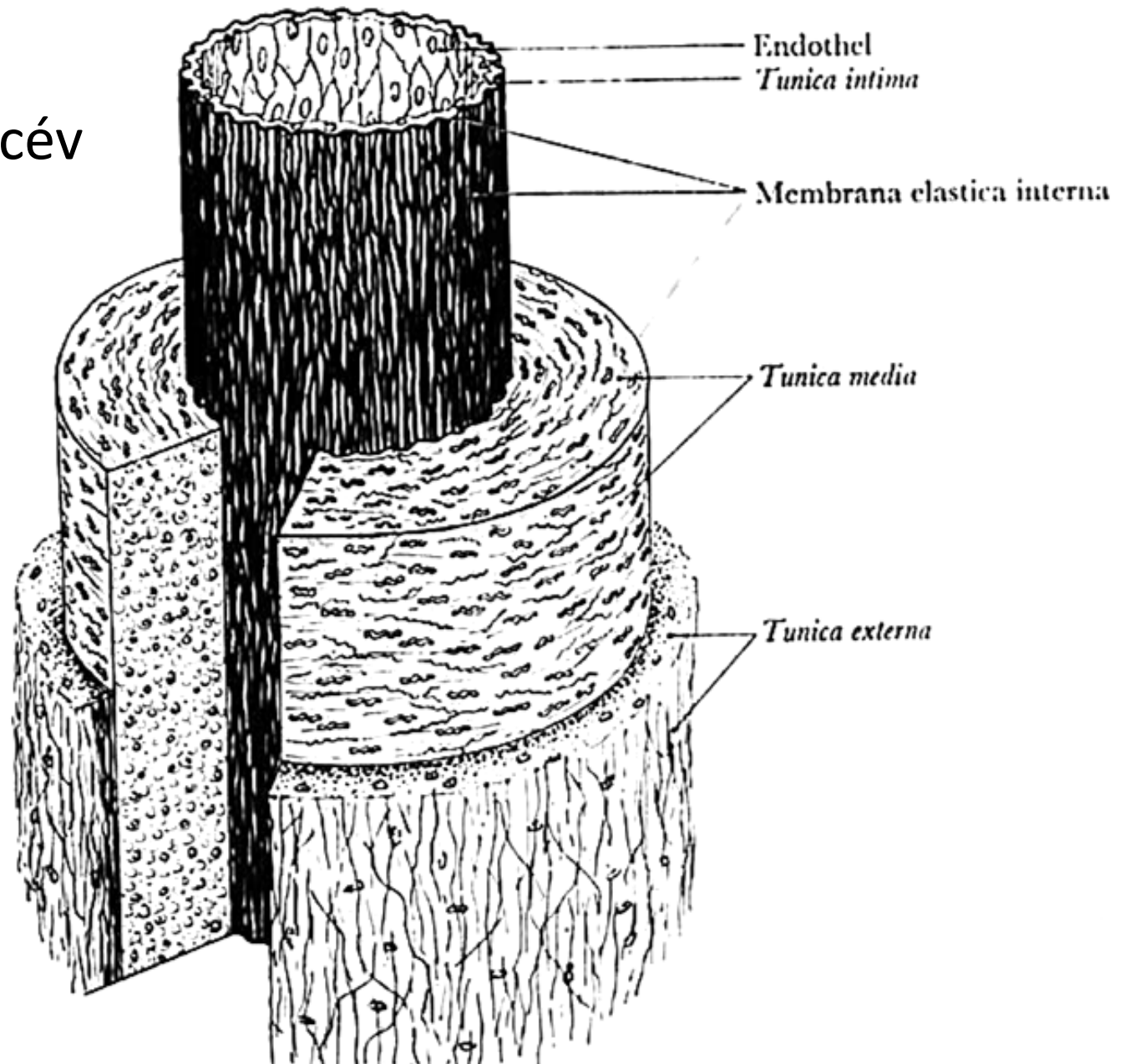


sinusoida

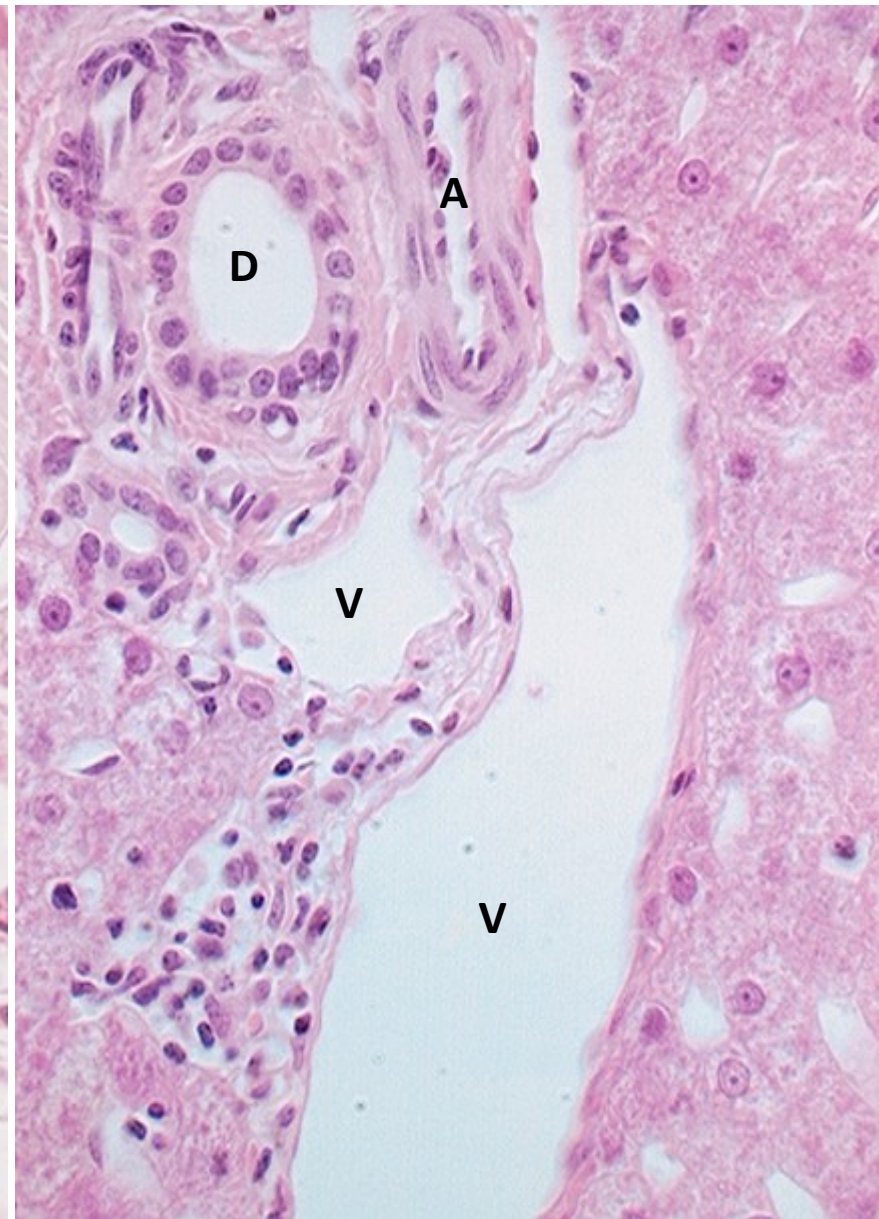
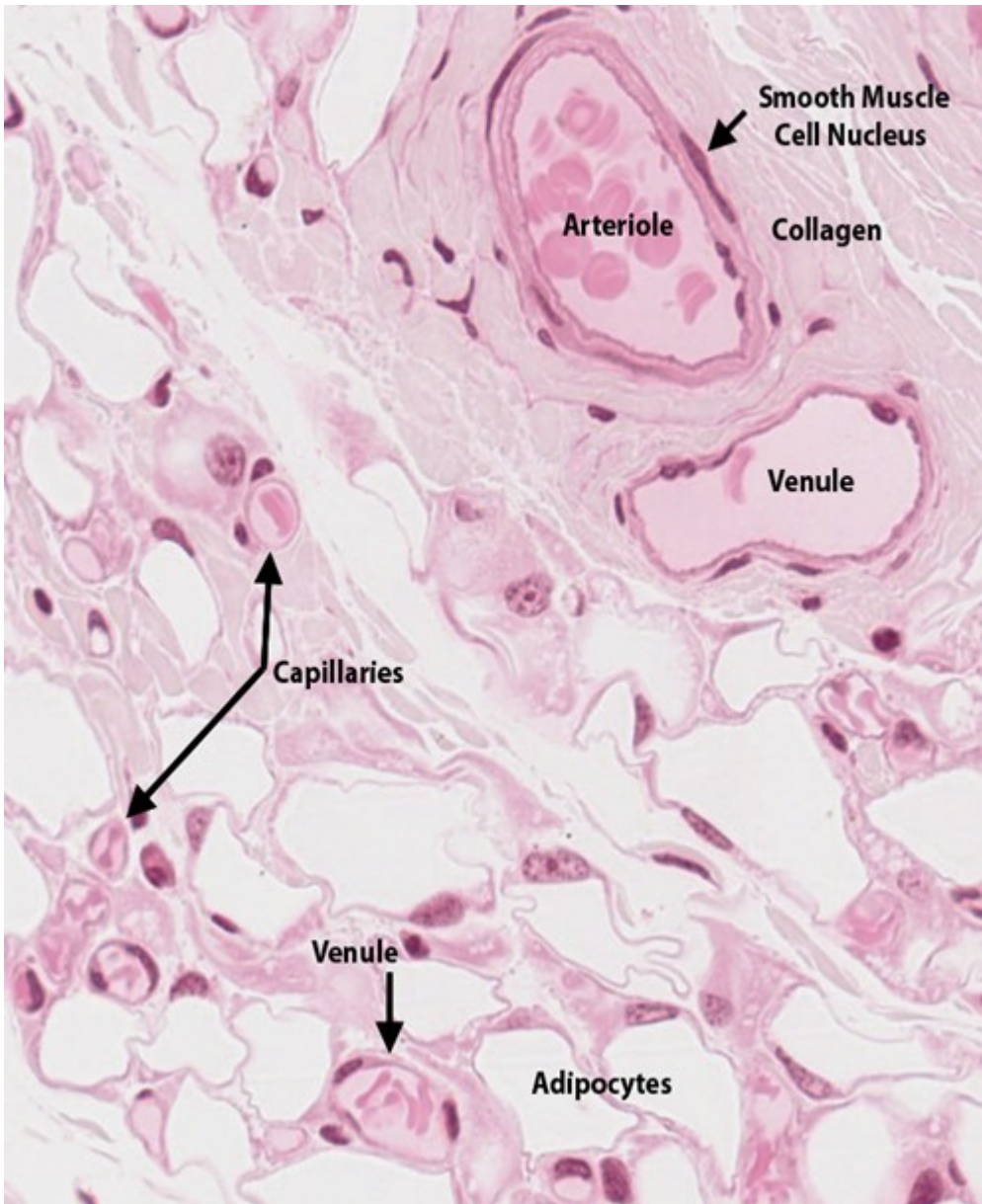




obecná stavba  
krevních cév

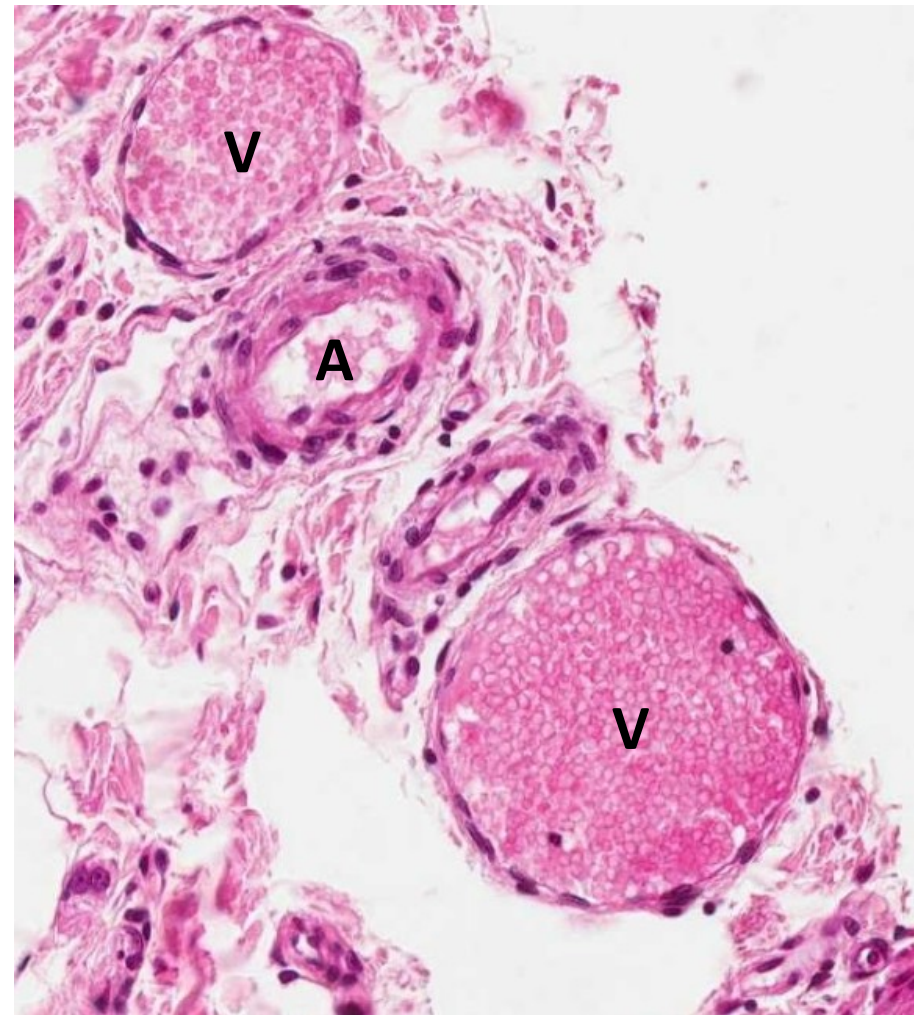
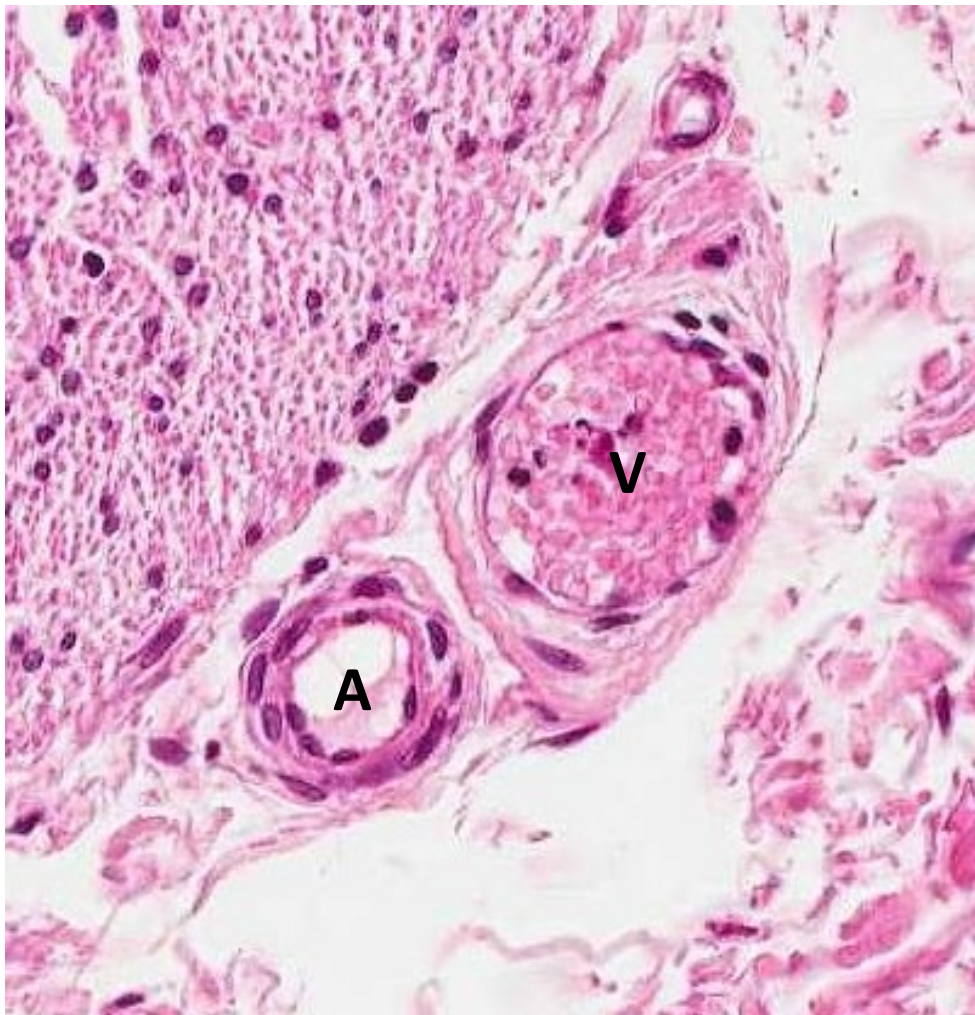


kapiláry, arterioly, venuly [endotel], vývody žláz [epitel]



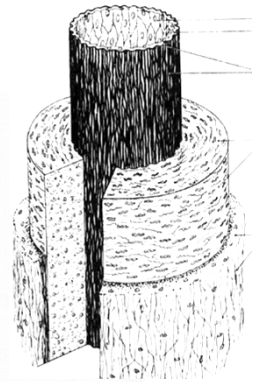


# arteriola a venula



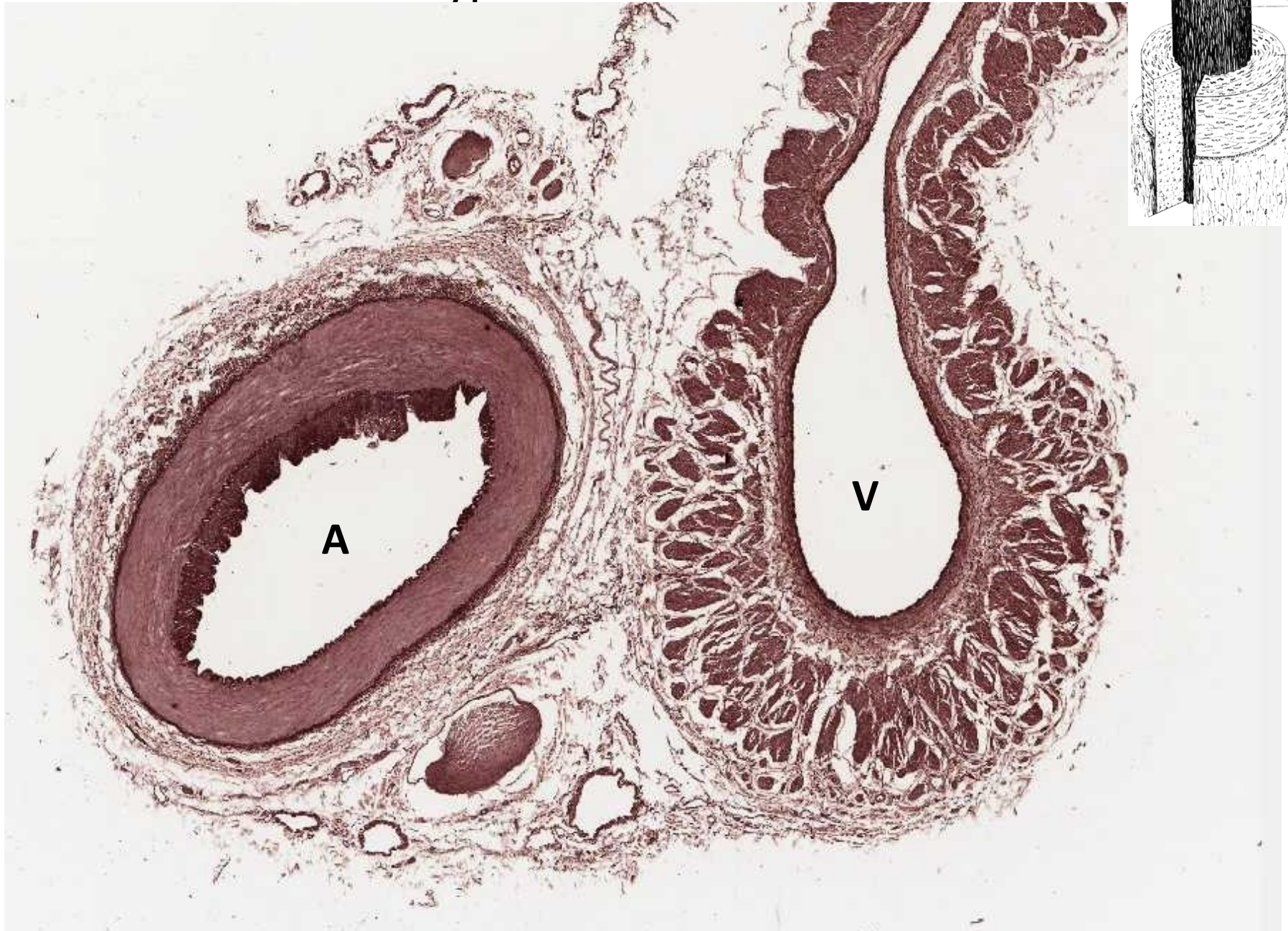


# arterie svalového typu s vénou - HE





# arterie svalového typu s vénou - orcein

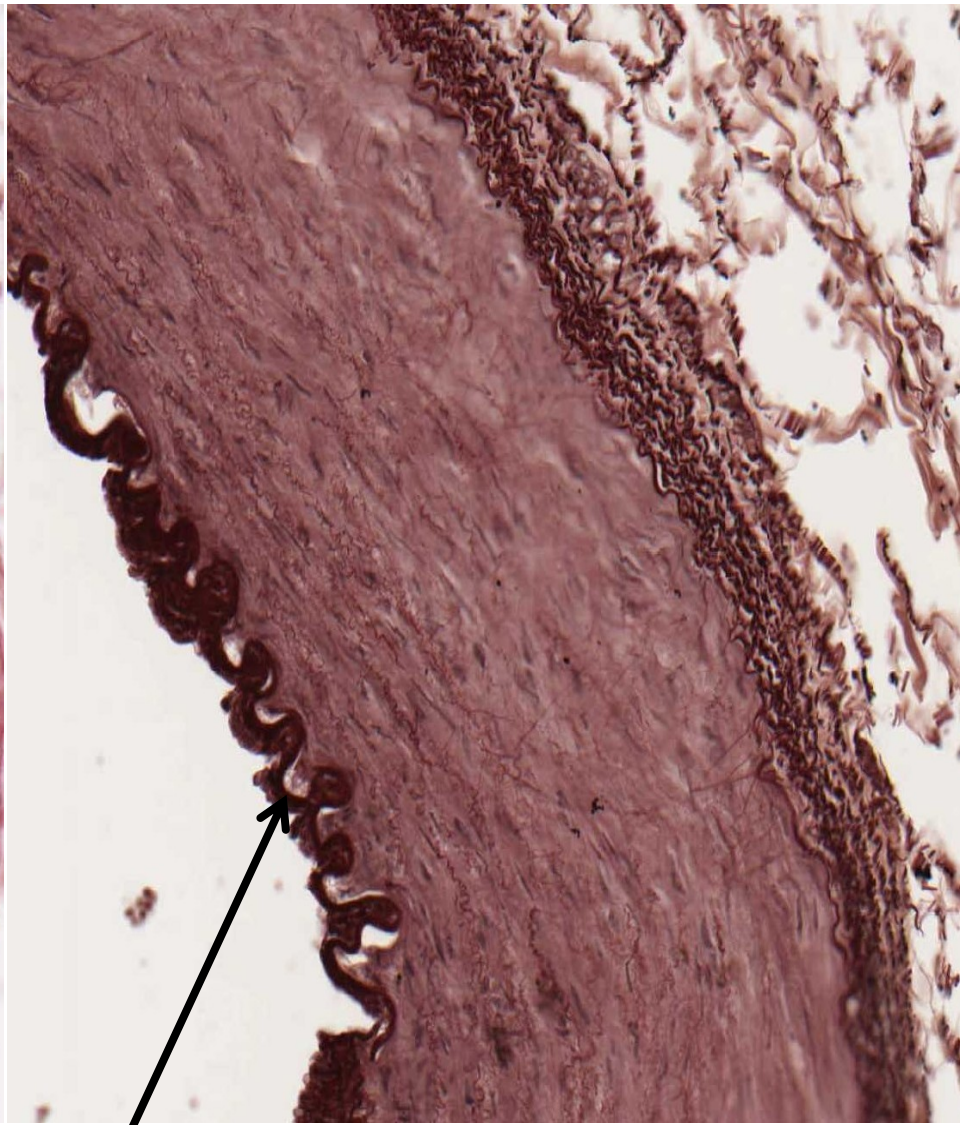
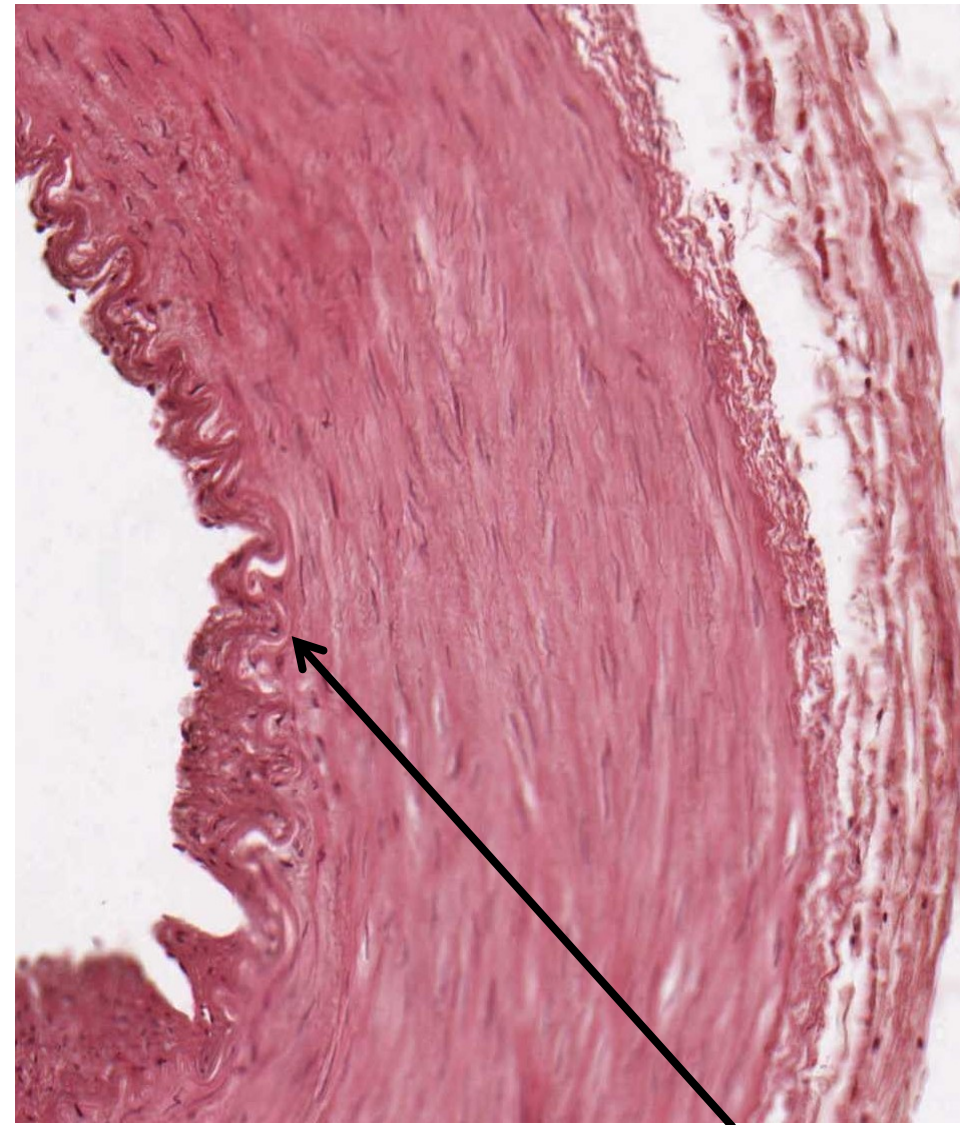




arterie svalového typu

HE

orcein



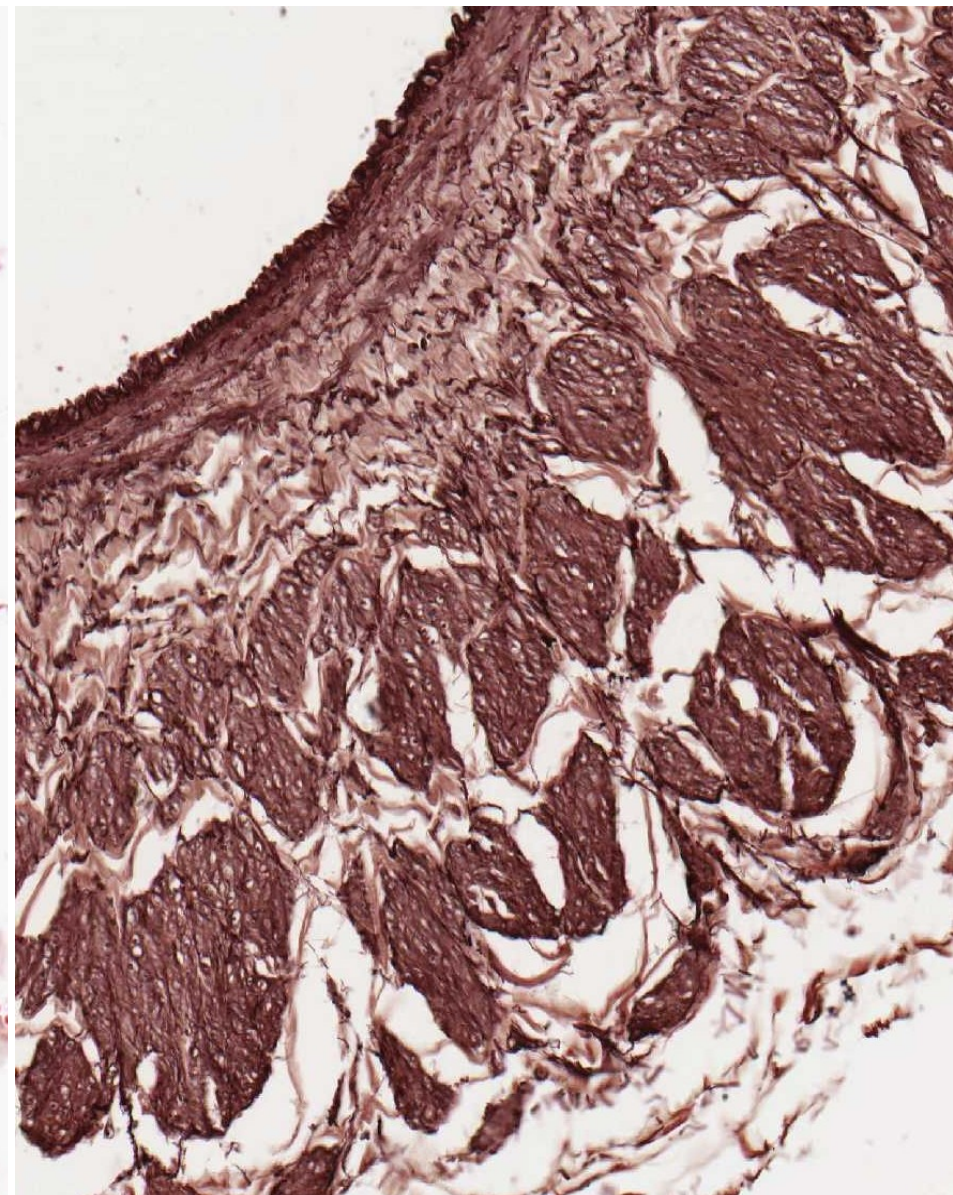
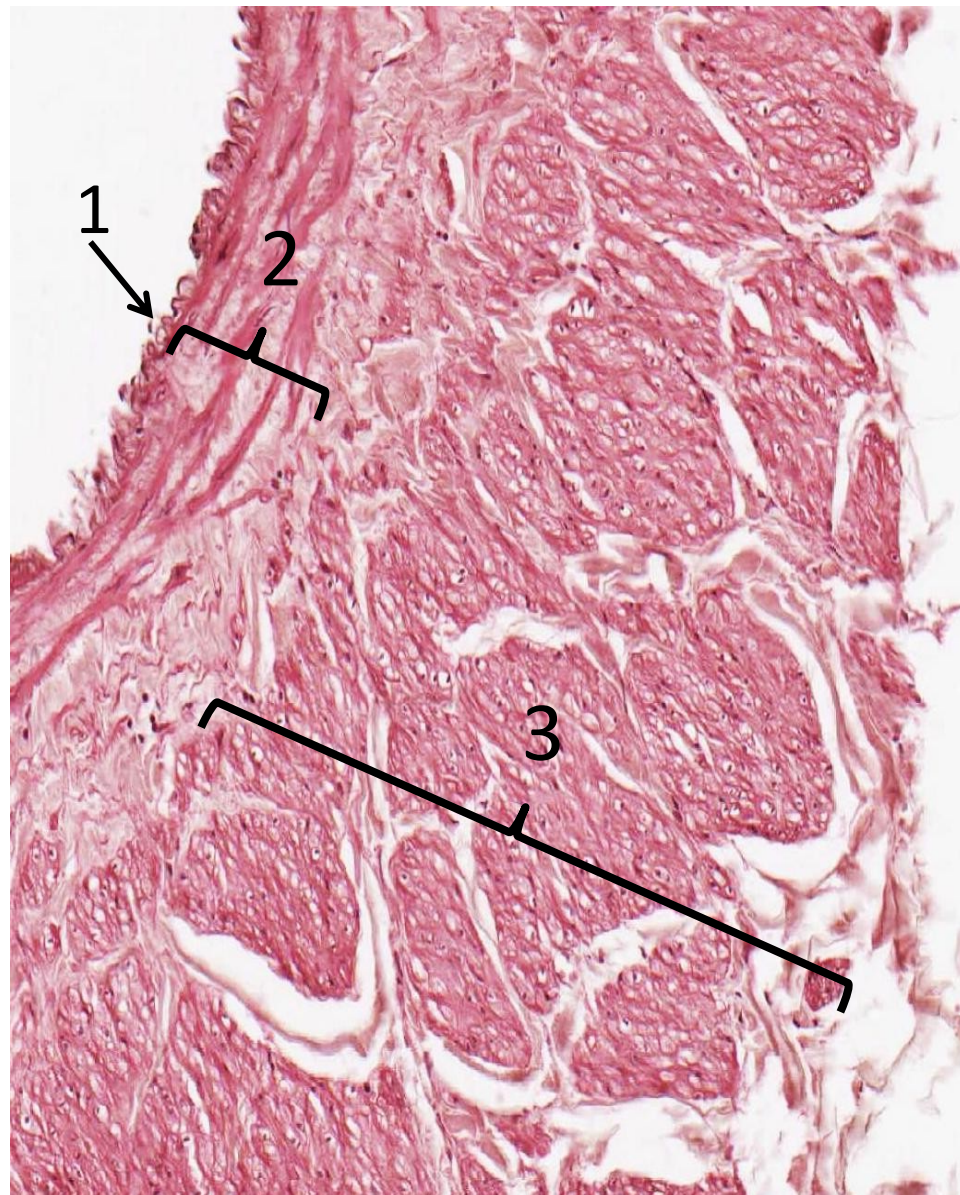
membrana elastica interna



# véna středního kalibru (1-intima, 2-medie, 3-adventicie)

HE

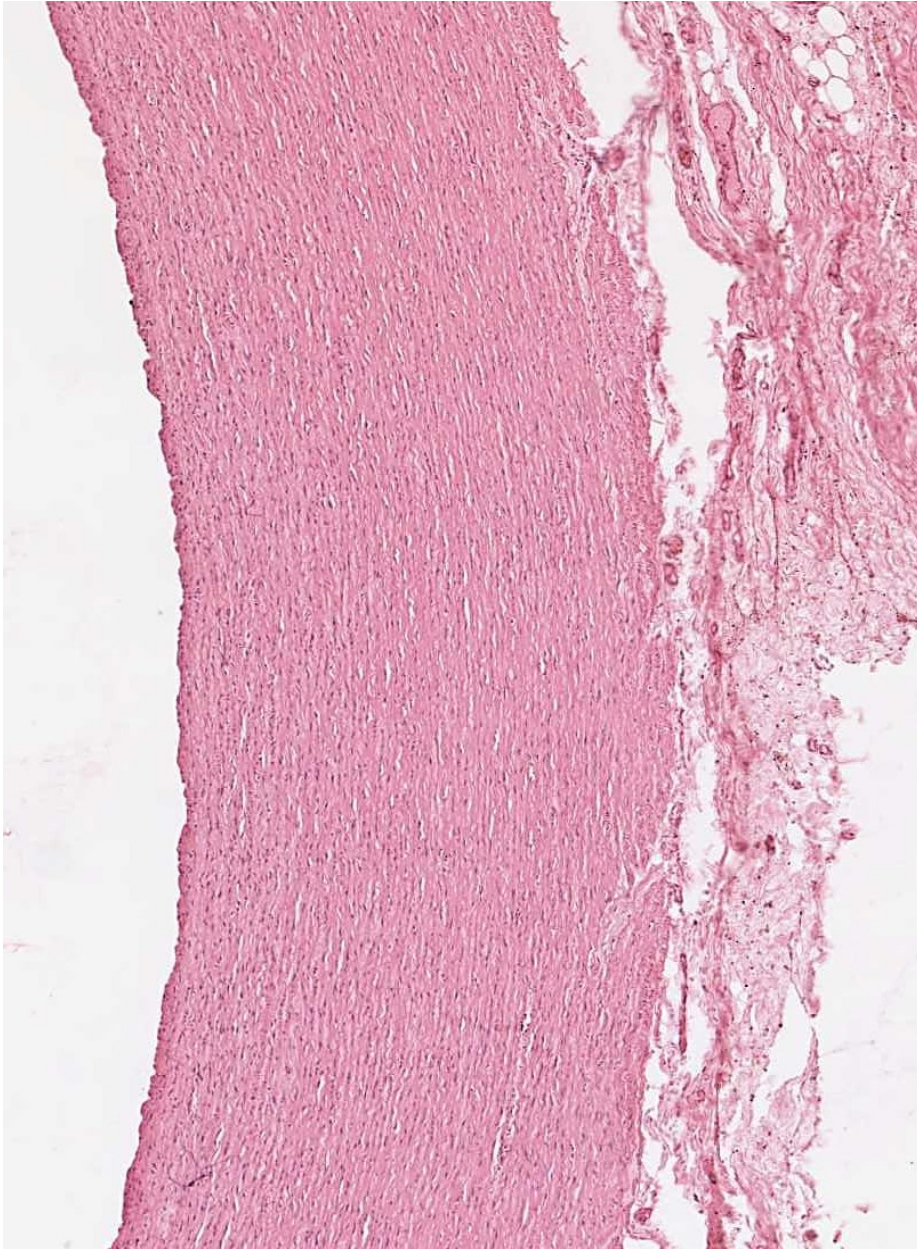
orcein



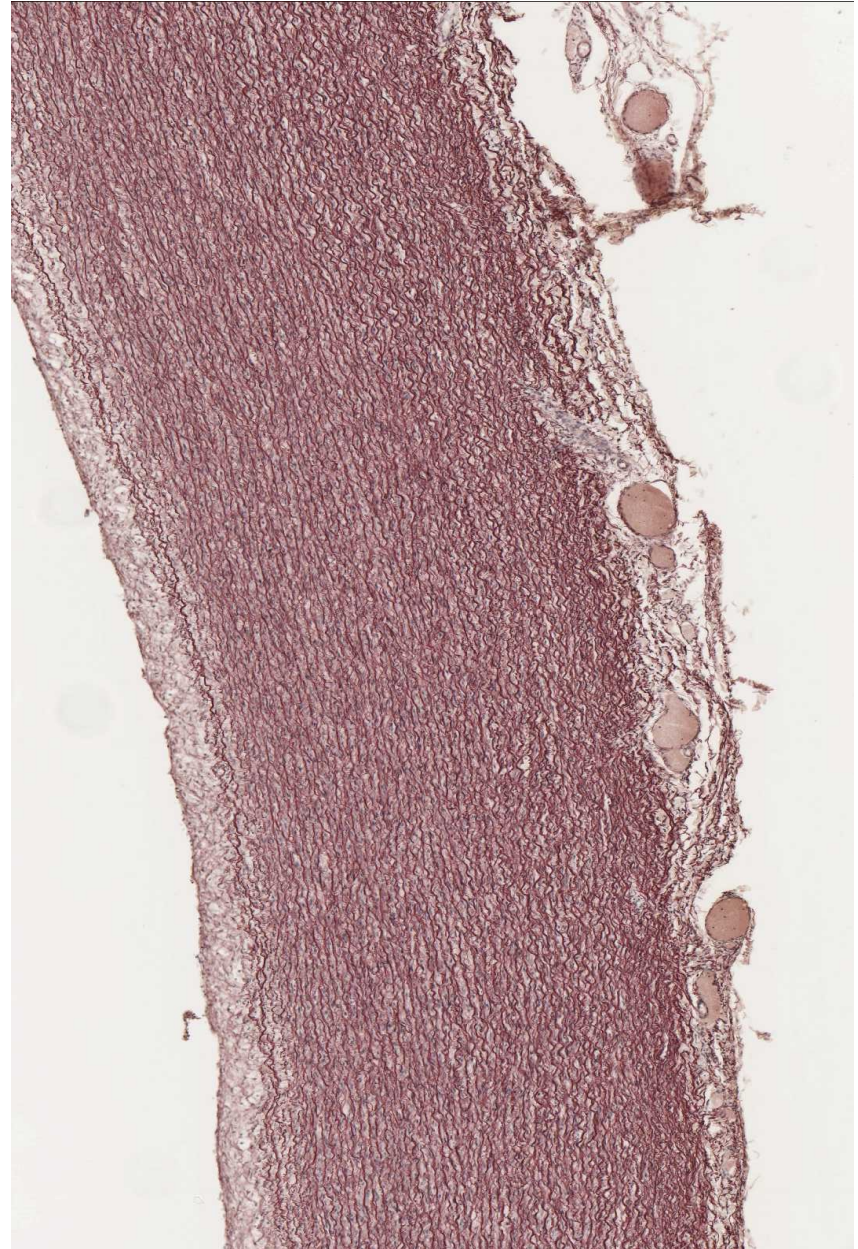


aorta

HE



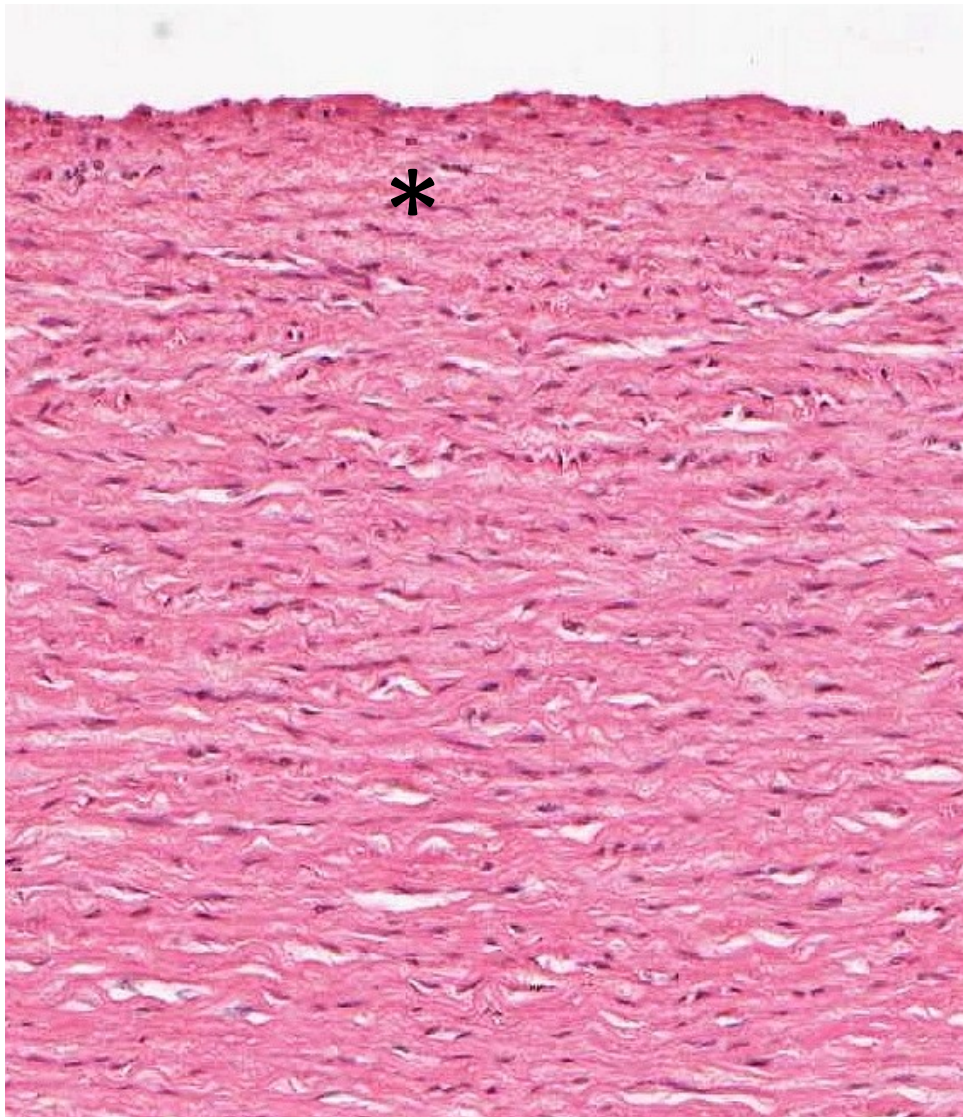
orcein



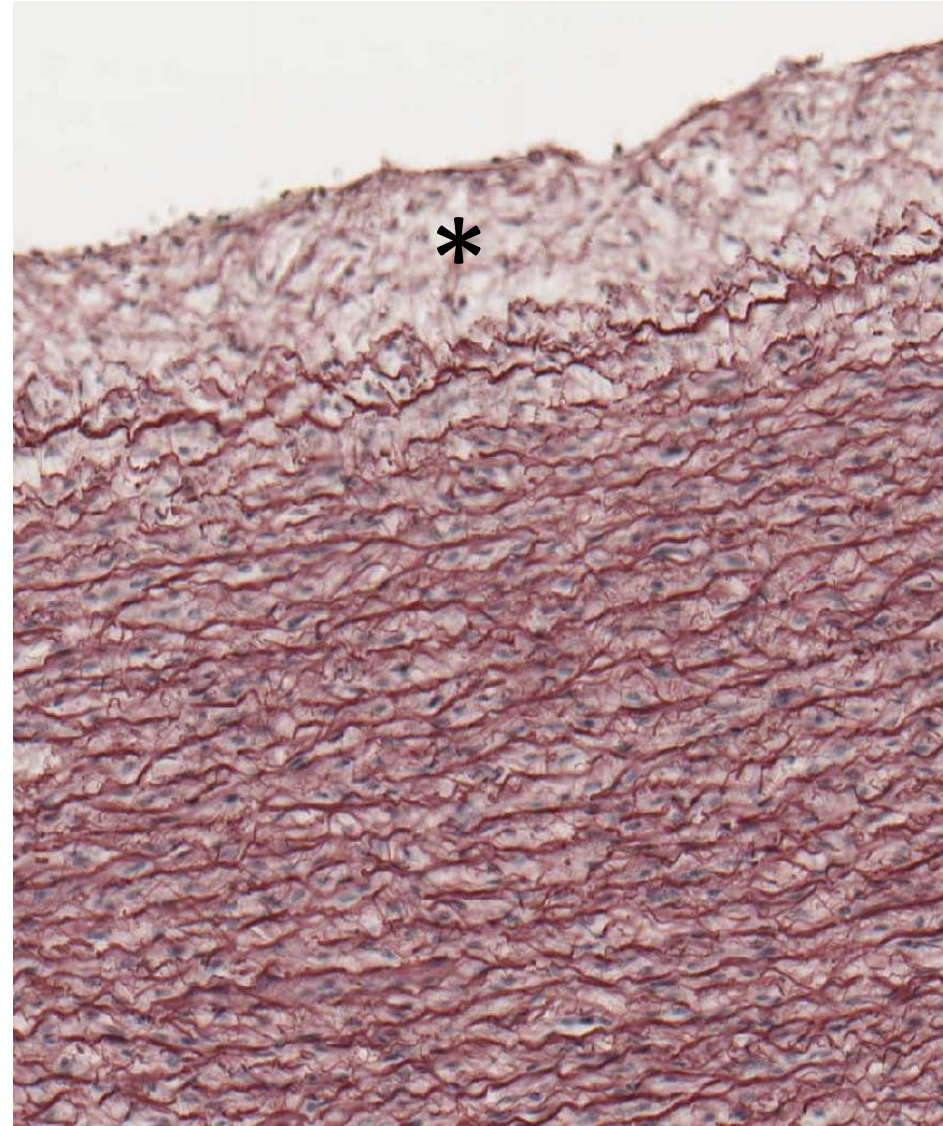


aorta – intima \*

HE

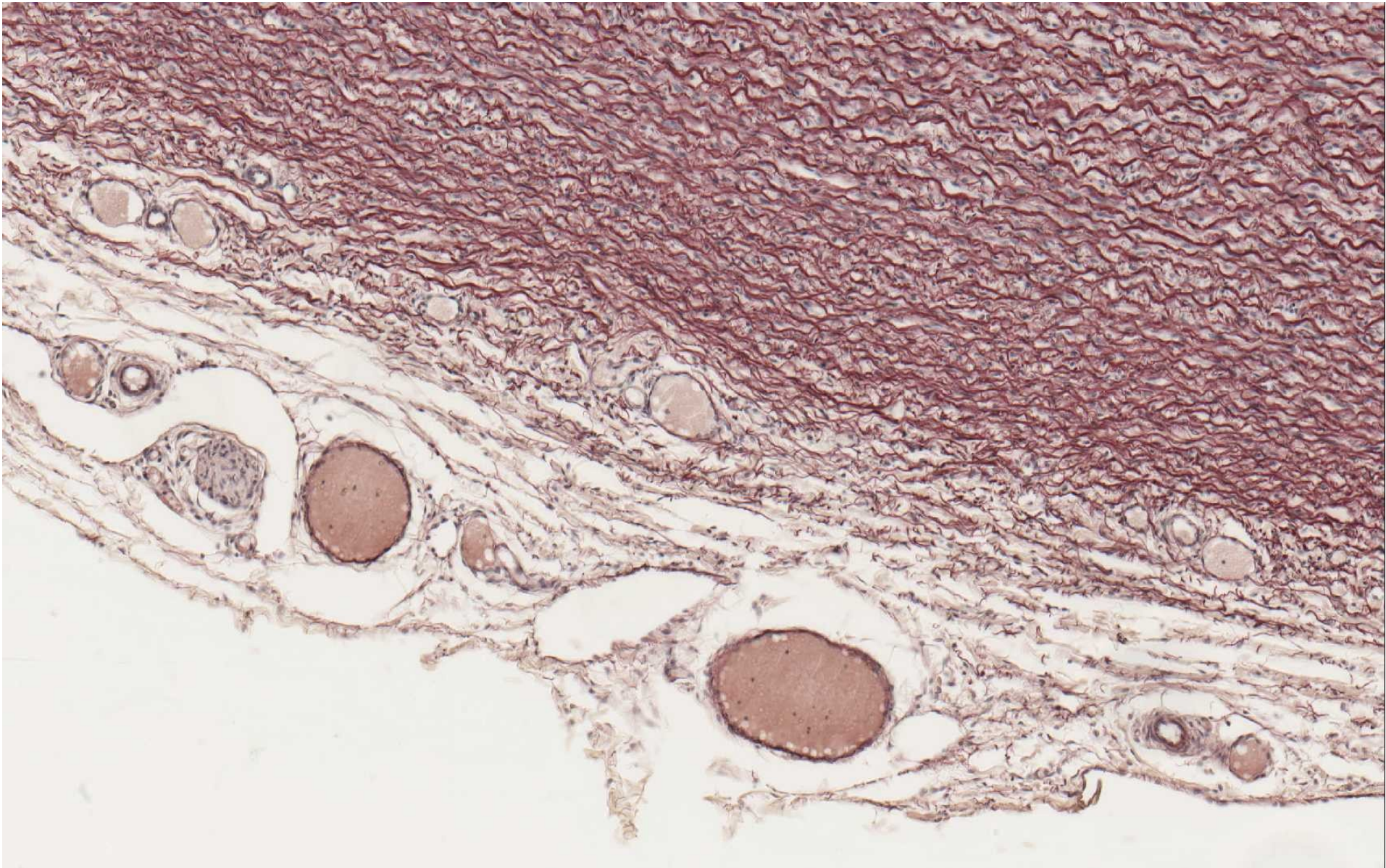


orcein



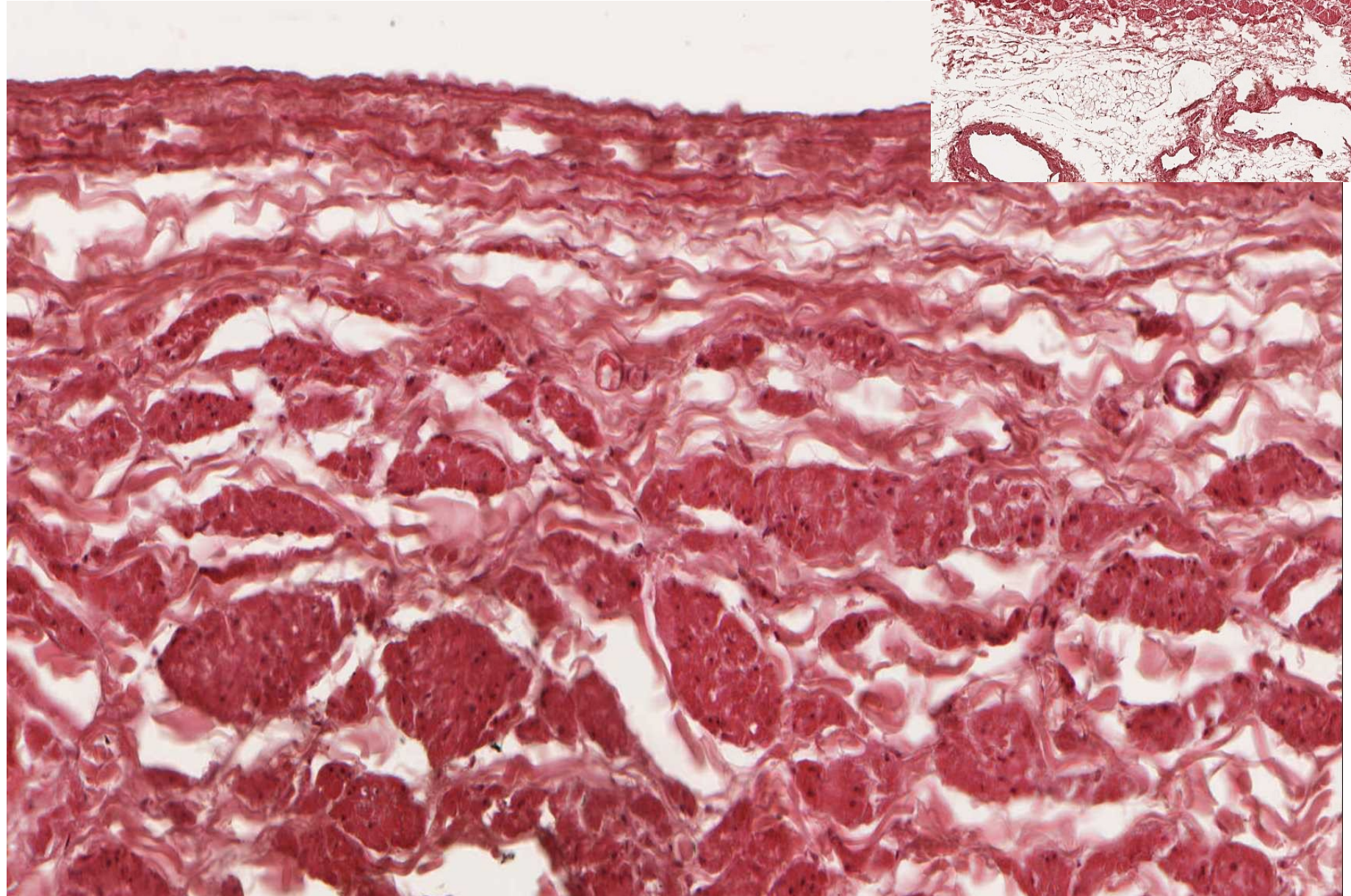
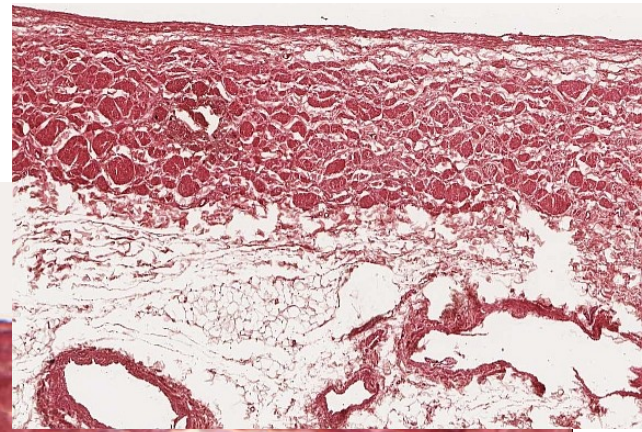


aorta (orcein) – adventicie, vasa vasorum, nervi vasorum





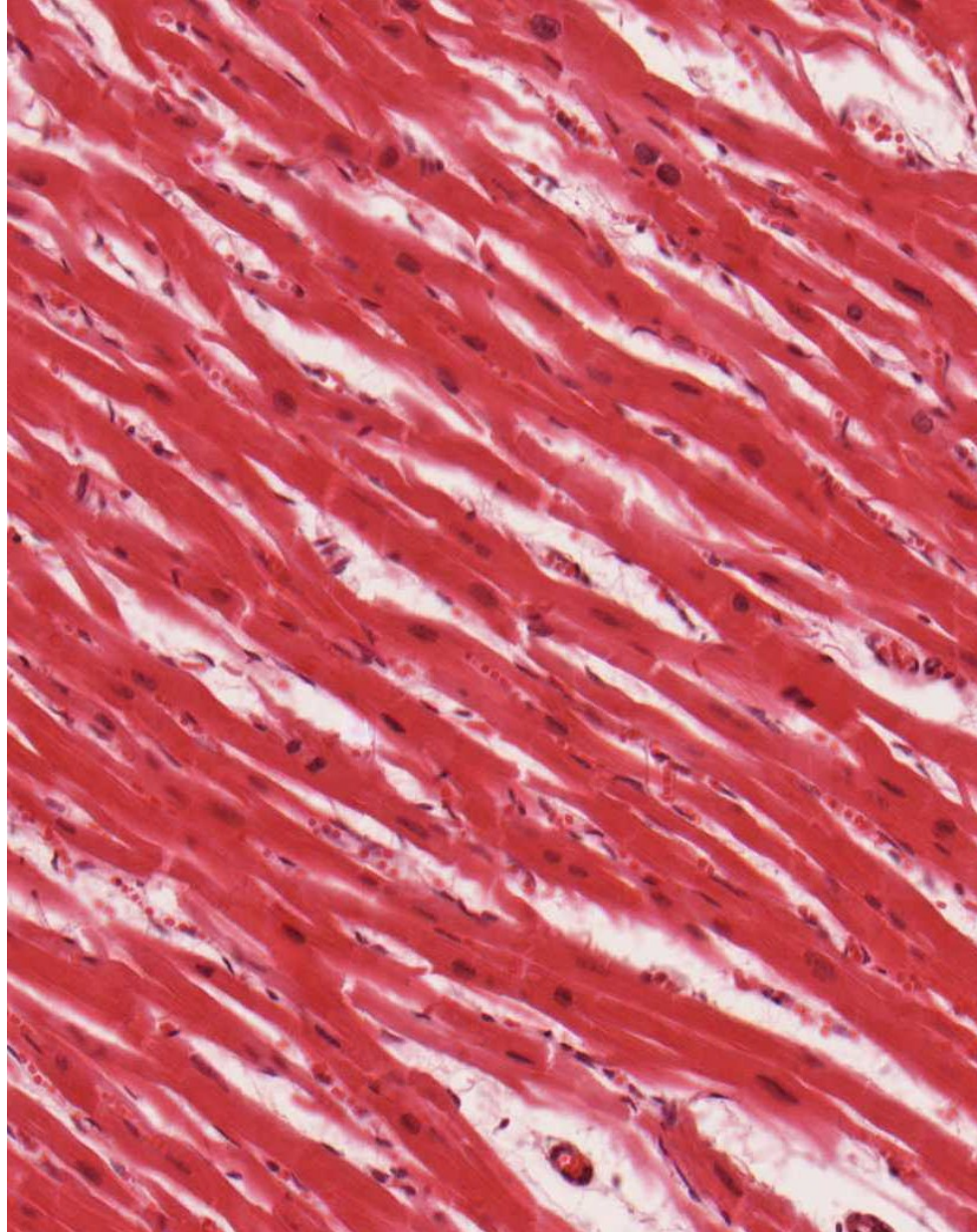
vena cava (HE)



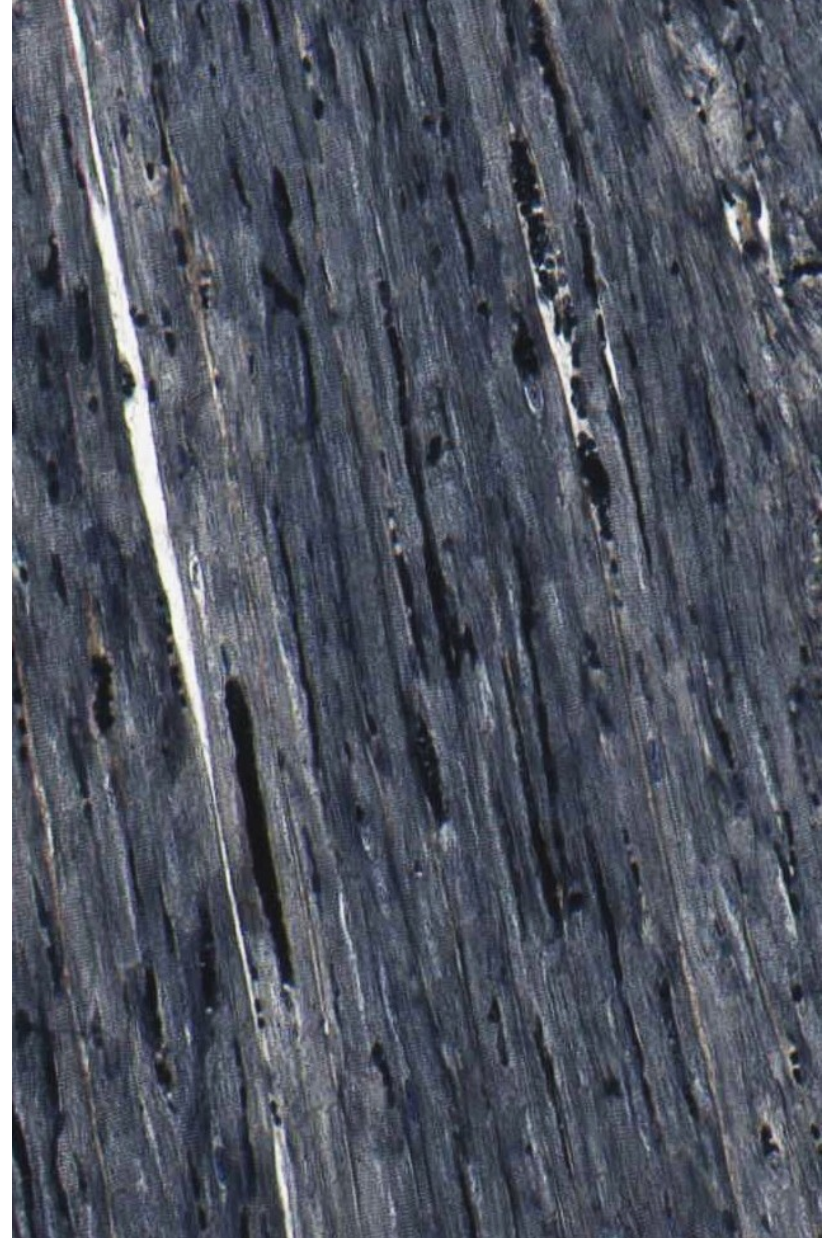


myokard

HE

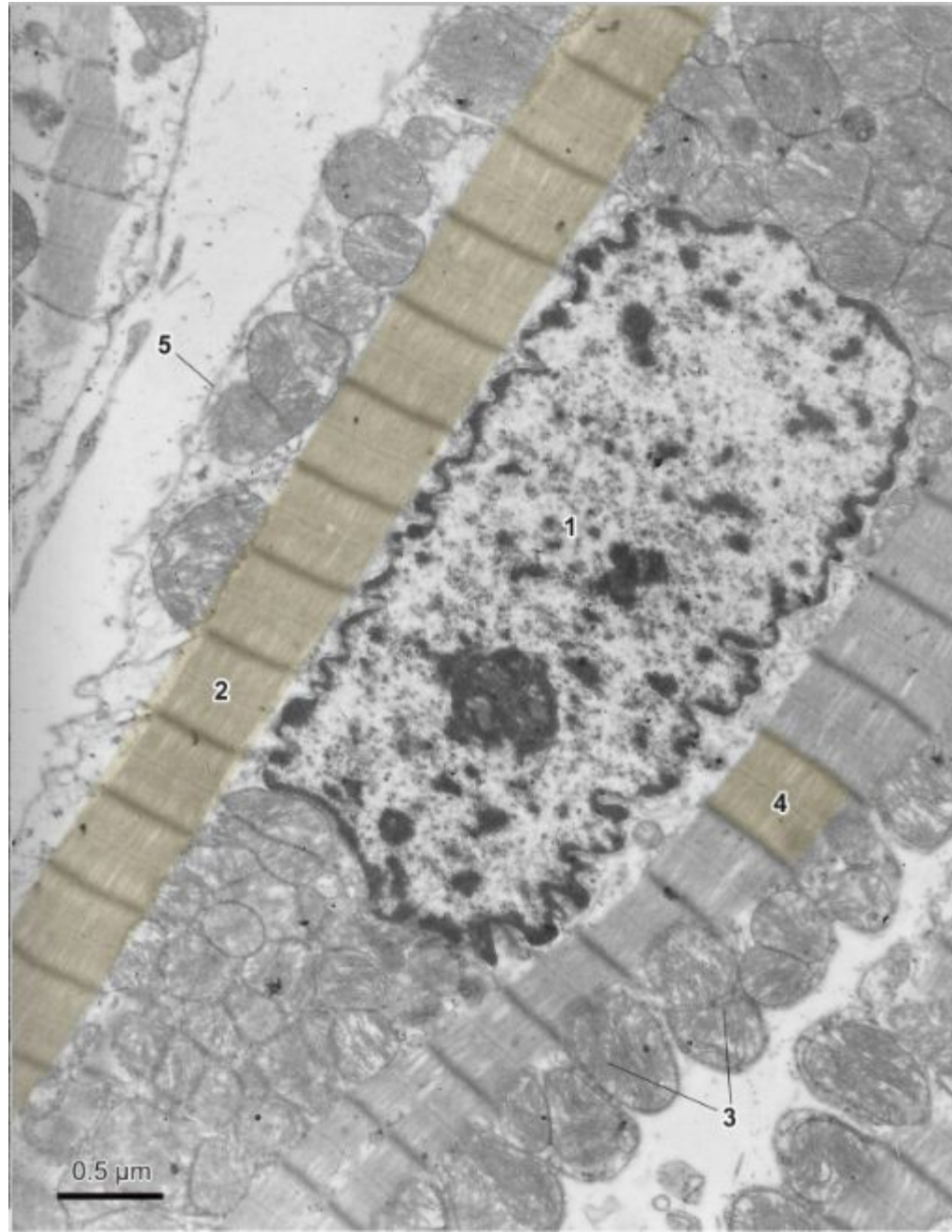


Heidenhain



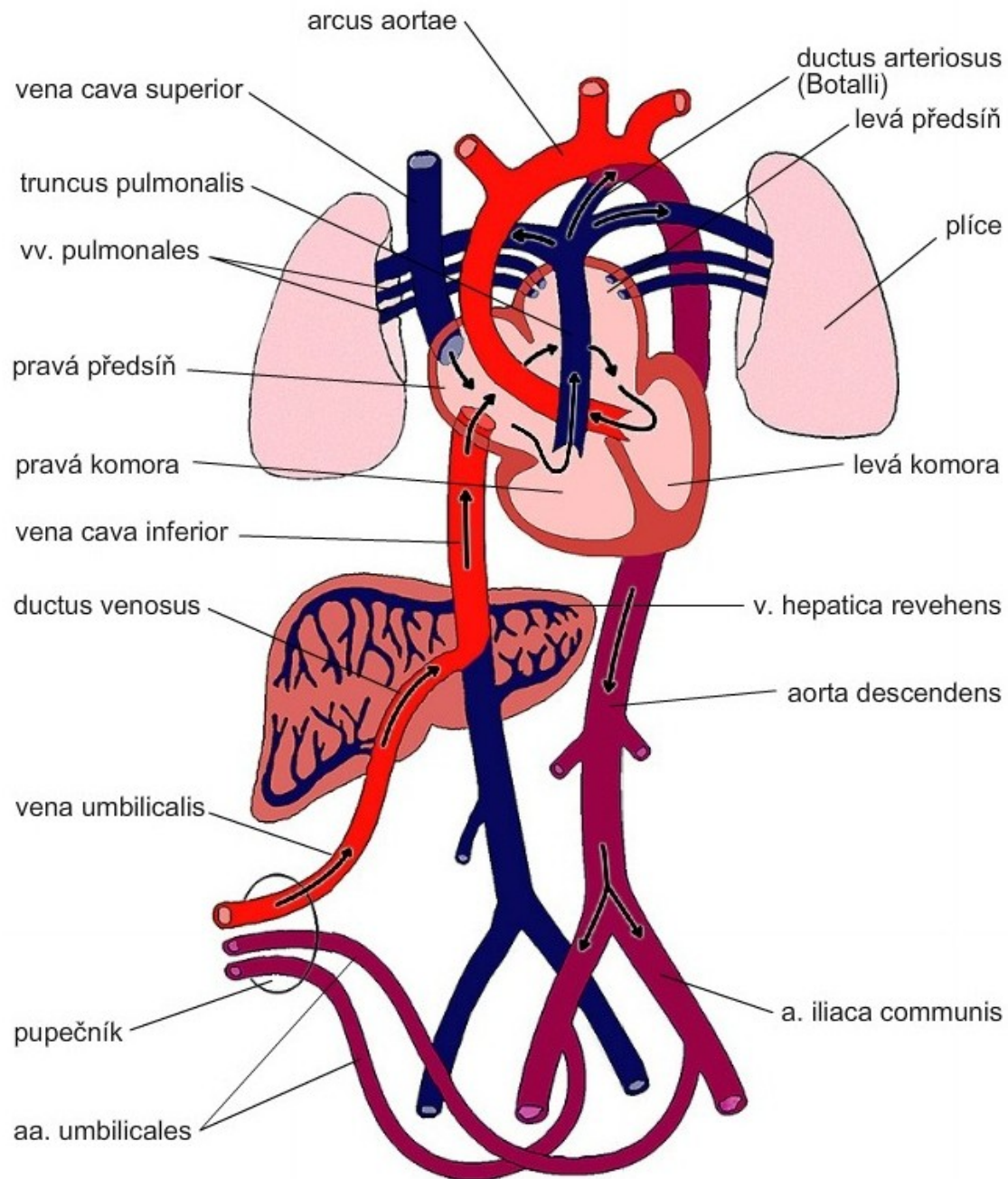


# kardiomyocyt (TEM)





# fetální krevní oběh







# KARDIOVASKULÁRNÍ SYSTÉM

## Preparáty

Arterie svalového typu s vénou (59 – HE, 60 - orcein)

Aorta (61 – HE, 62 - orcein)

Vena cava (63 - HE)

Myokard (64 – HE, 65 - Heidenhain)

## Atlas EM:

Arteriola (59)

Kapilára se souvislou výstelkou (55)

Kapilára fenestrovaná (56, 57)

Sinusoidní kapiláry (58)

Kardiomyocyt (44-46)

Vývoj srdce, embryonální a fetální krevní oběh (91-93)