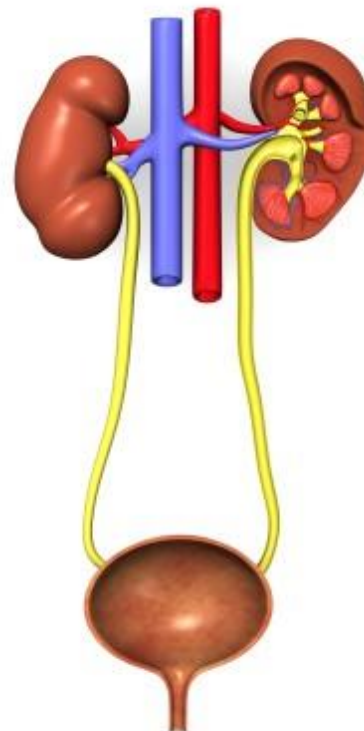
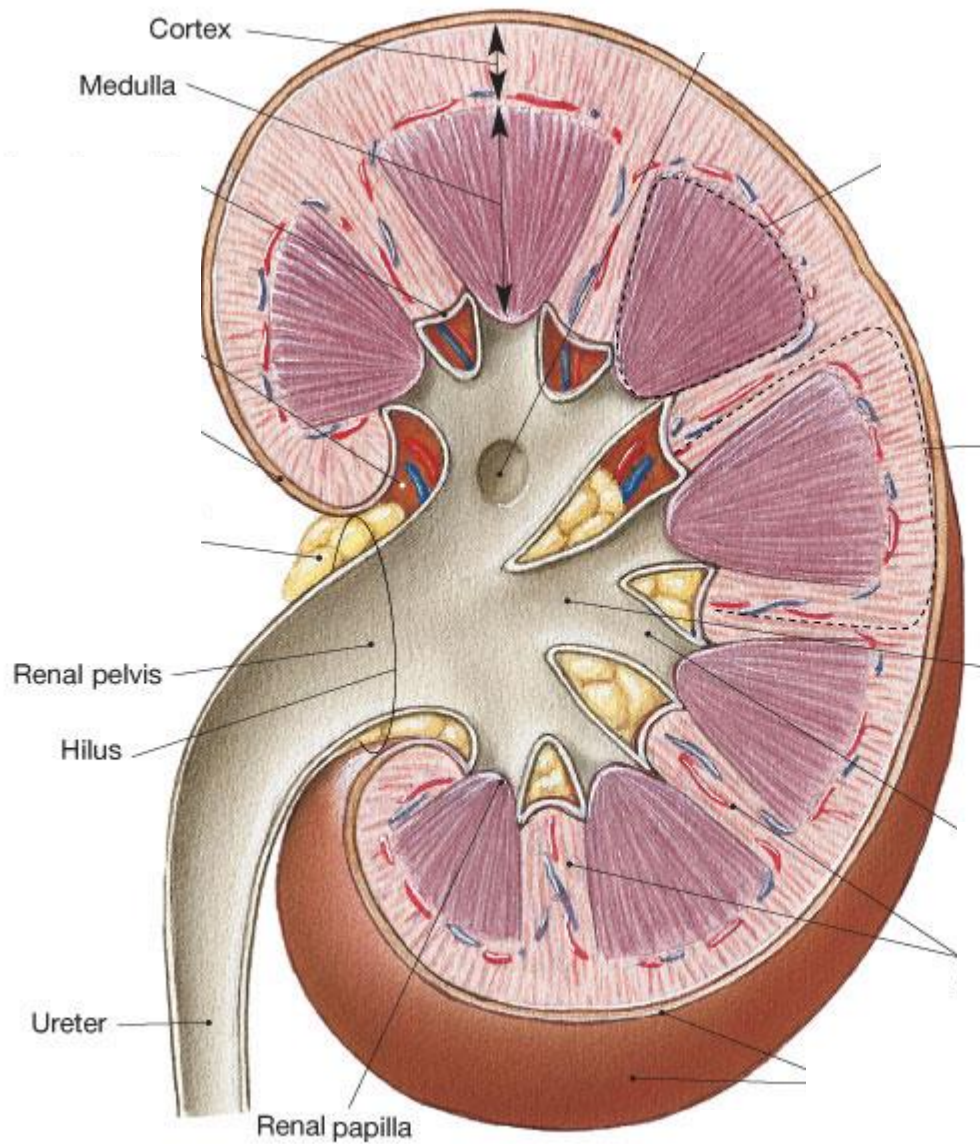




## Močový systém

- **Ren (ledvina)**
- **Calyx renalis**
- **Ureter**
- **Vesica urinalis**
- **Urethra**





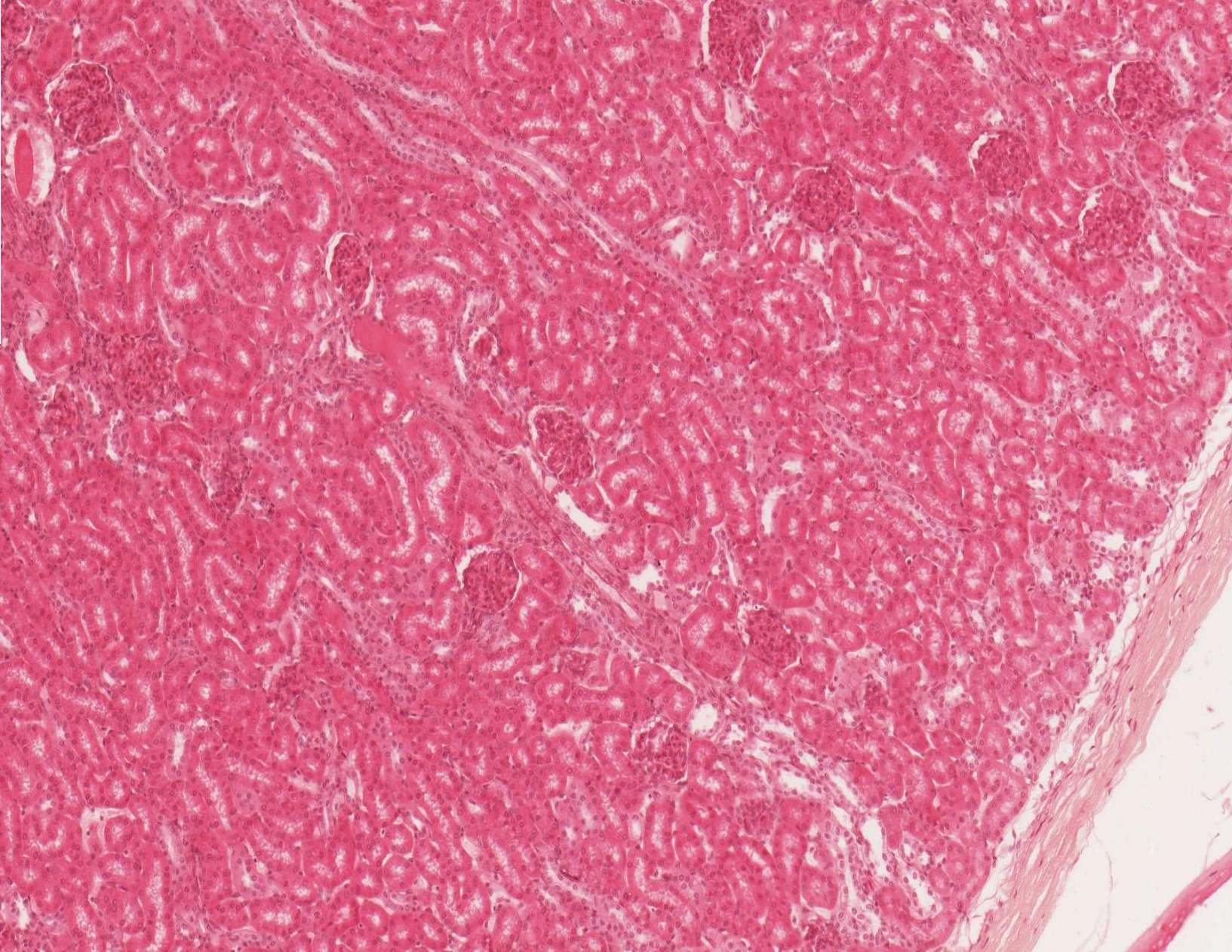
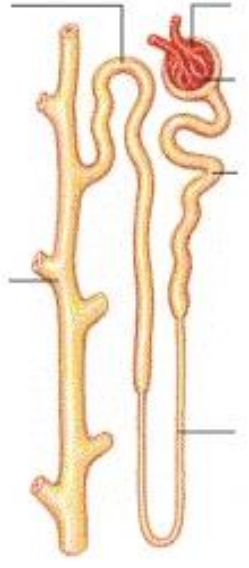
**Ledvina (ren, nephros)**  
 capsula fibrosa  
 capsula adiposa

**Cortex:**

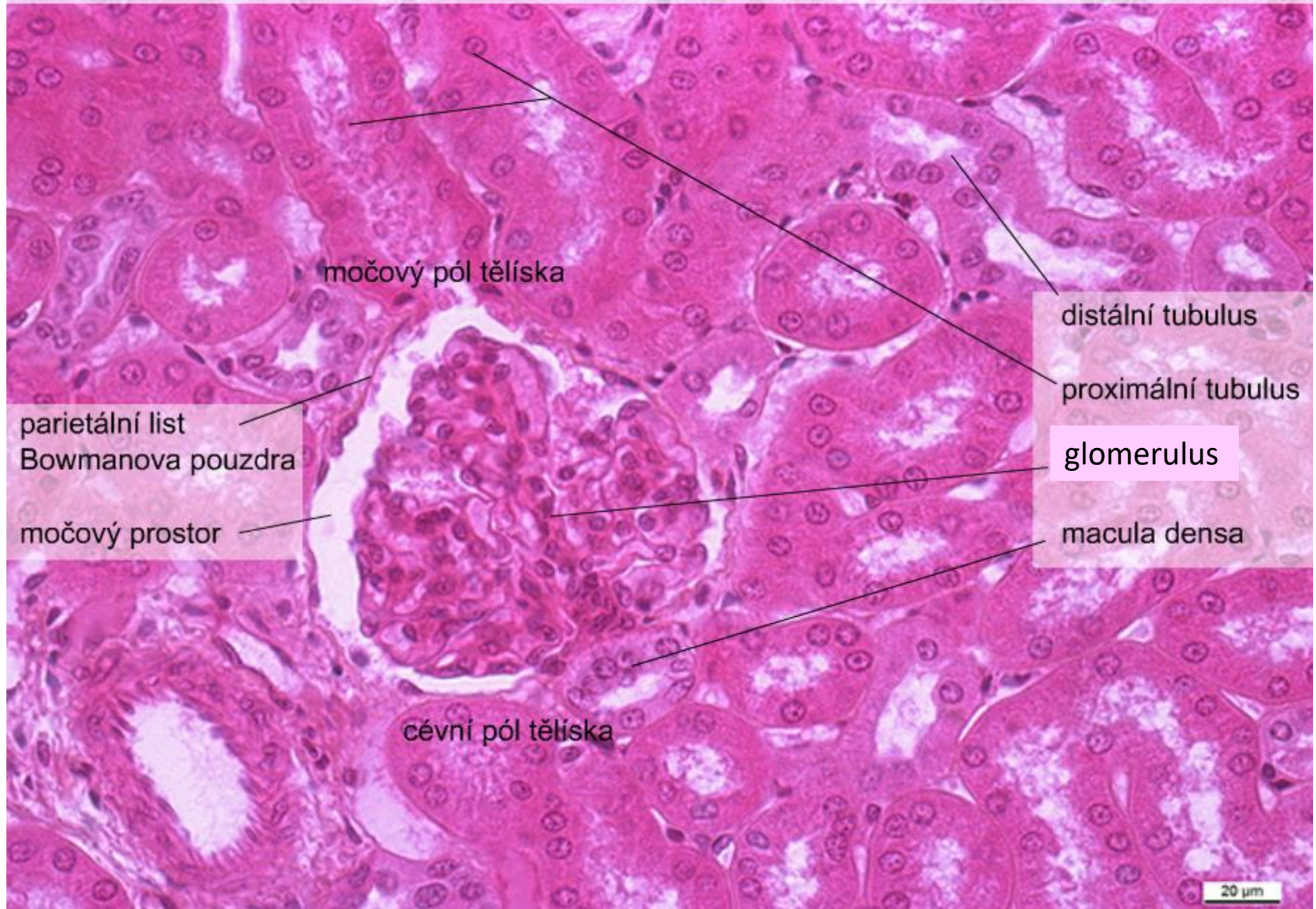
- cortex corticis
- pars radiata corticis
- columnae renales (Bertini)

**Medulla:**

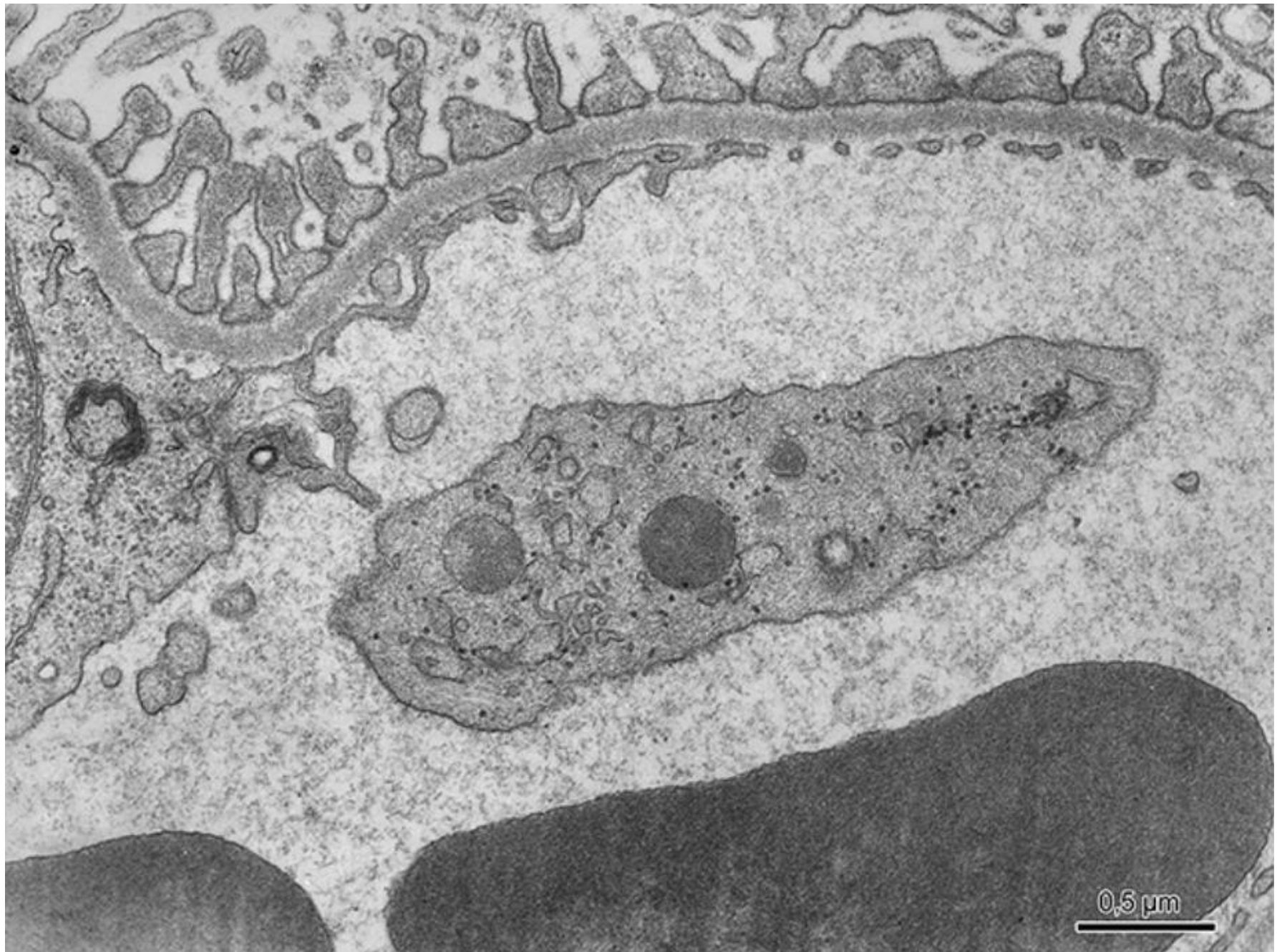
- pyramides renales (10 – 18)
- papillae renales
- foramina papillaria na area cribrosa
- striae medullares corticis



Ren – corpusculum renis, (HE), objektiv 40×



fenestrovaná kapilára glomerulu - filtrační bariéra

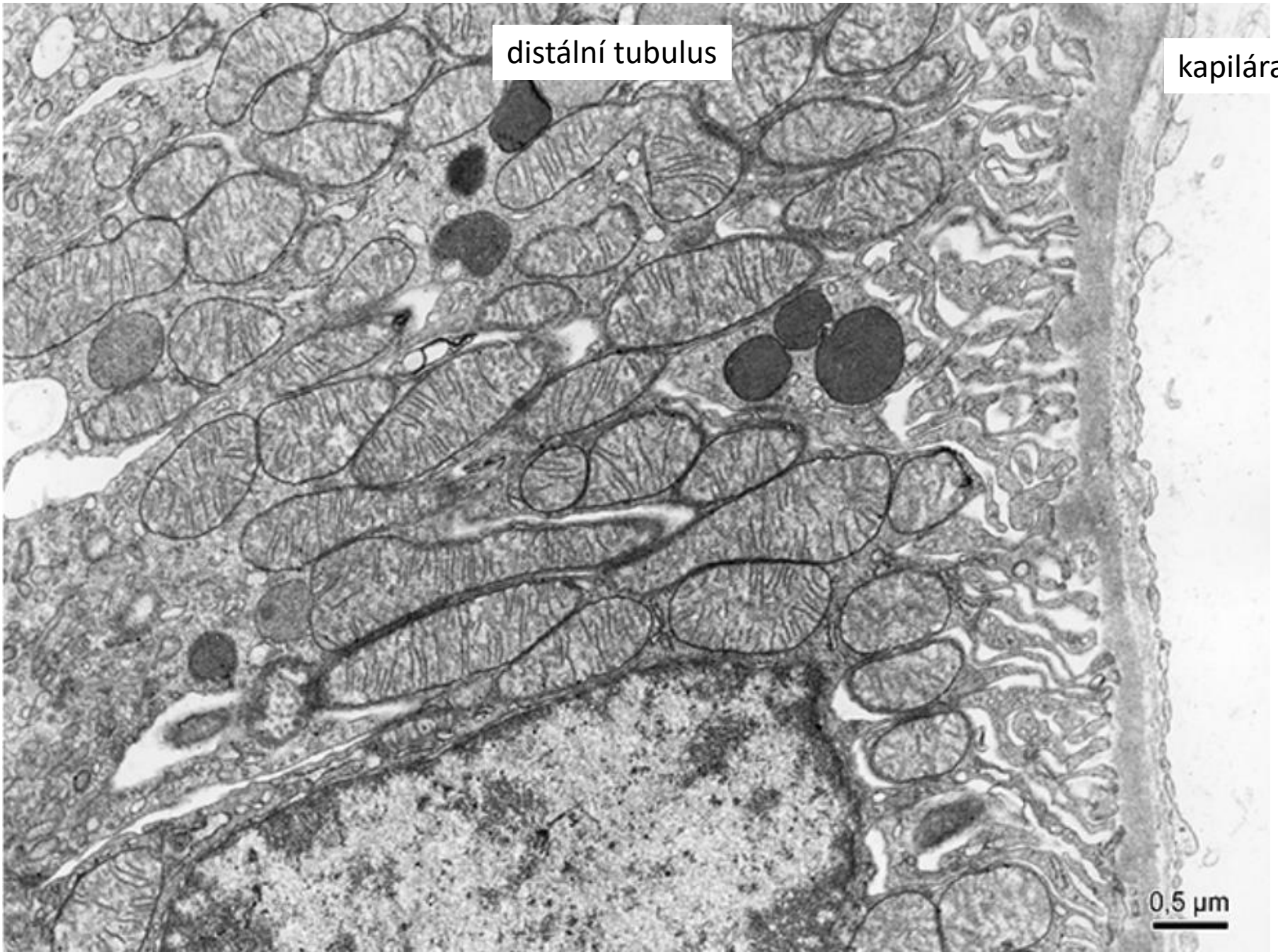


# bazální labyrint

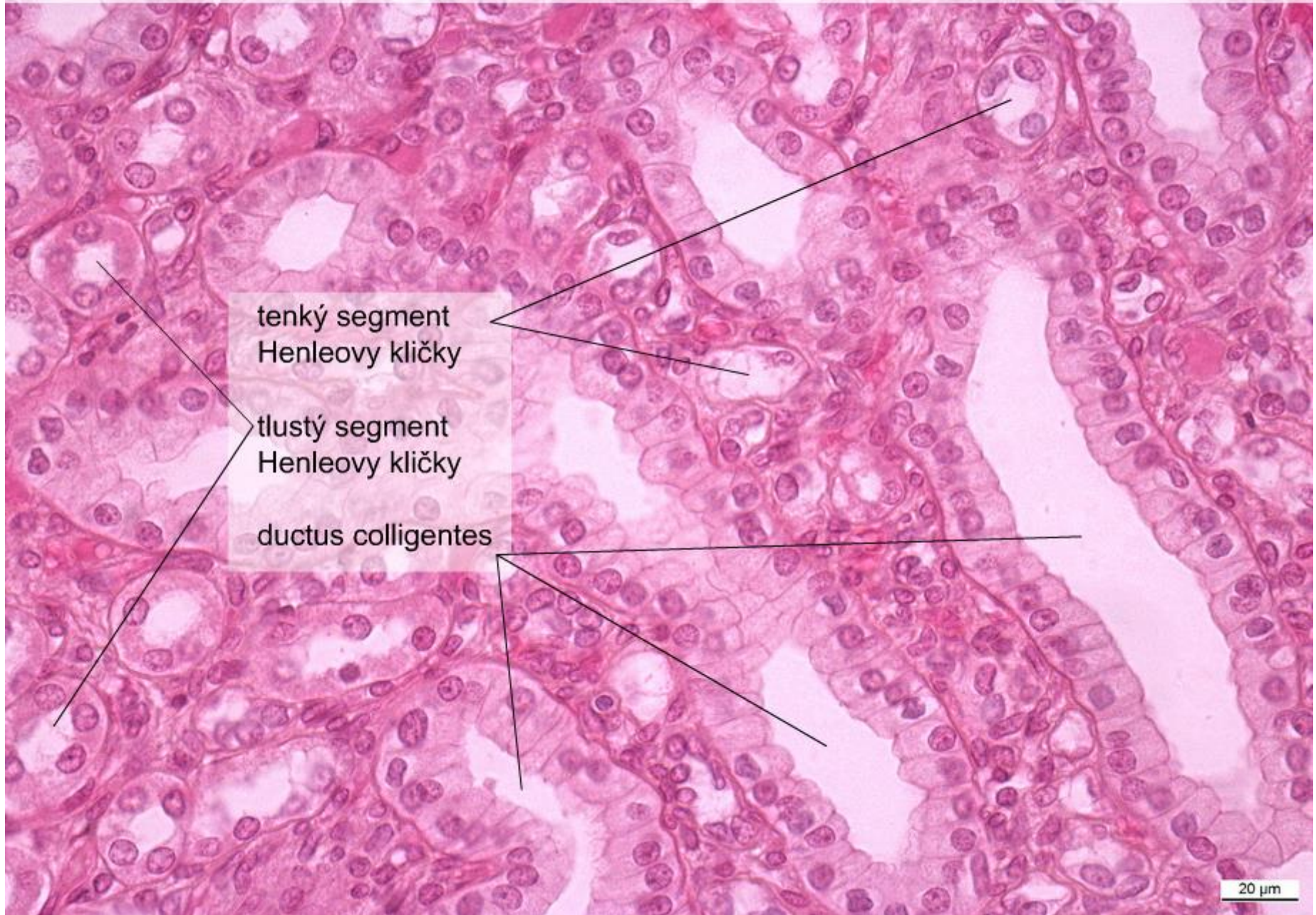
distální tubulus

kapilára

0,5  $\mu\text{m}$



Ren – medulla, (HE), objektiv 40×



Calyx renalis, (HE), objektiv 2,5x

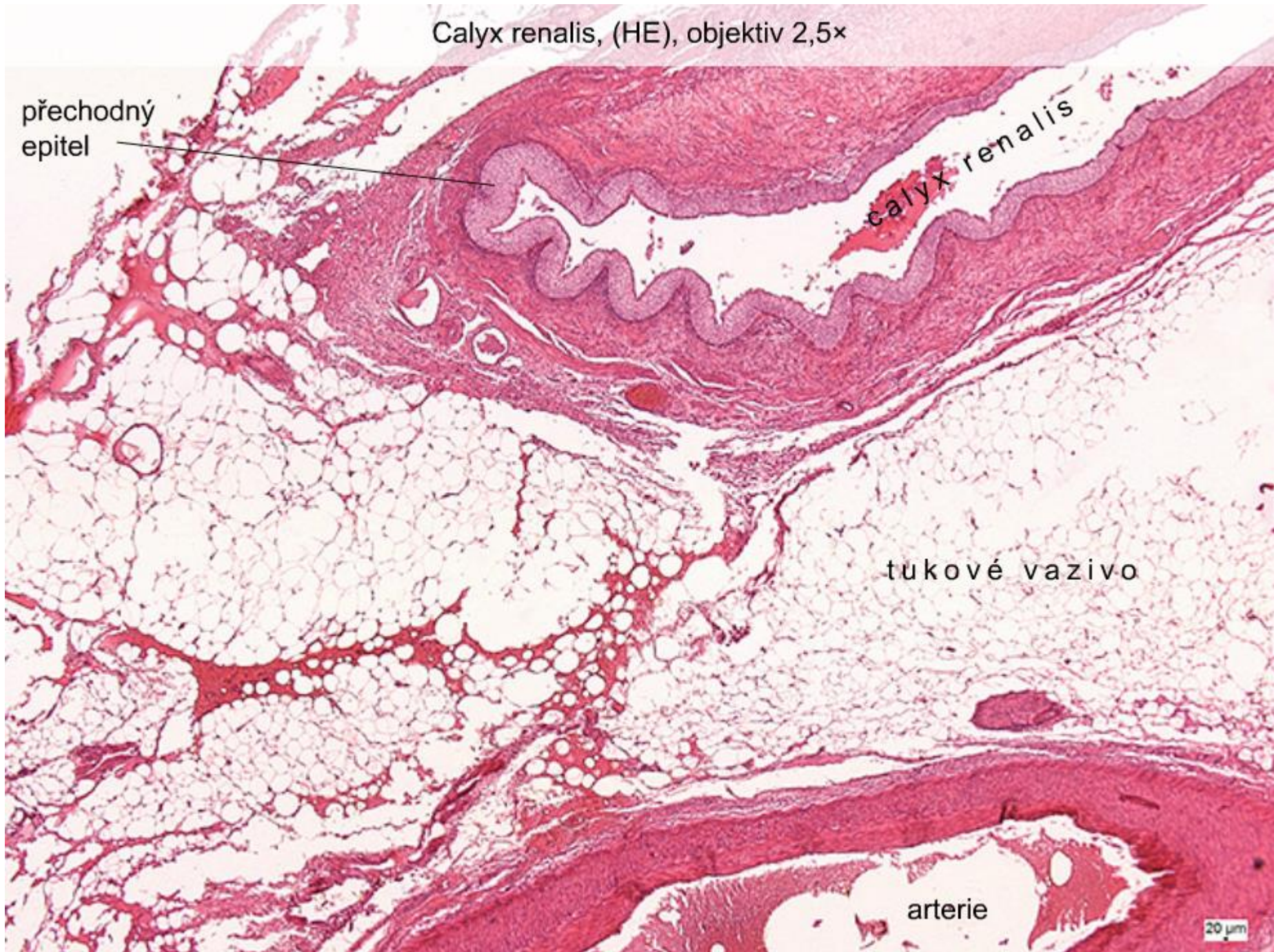
přechodný  
epitel

calyx renalis

tukové vazivo

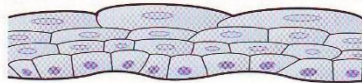
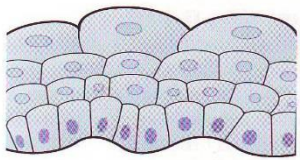
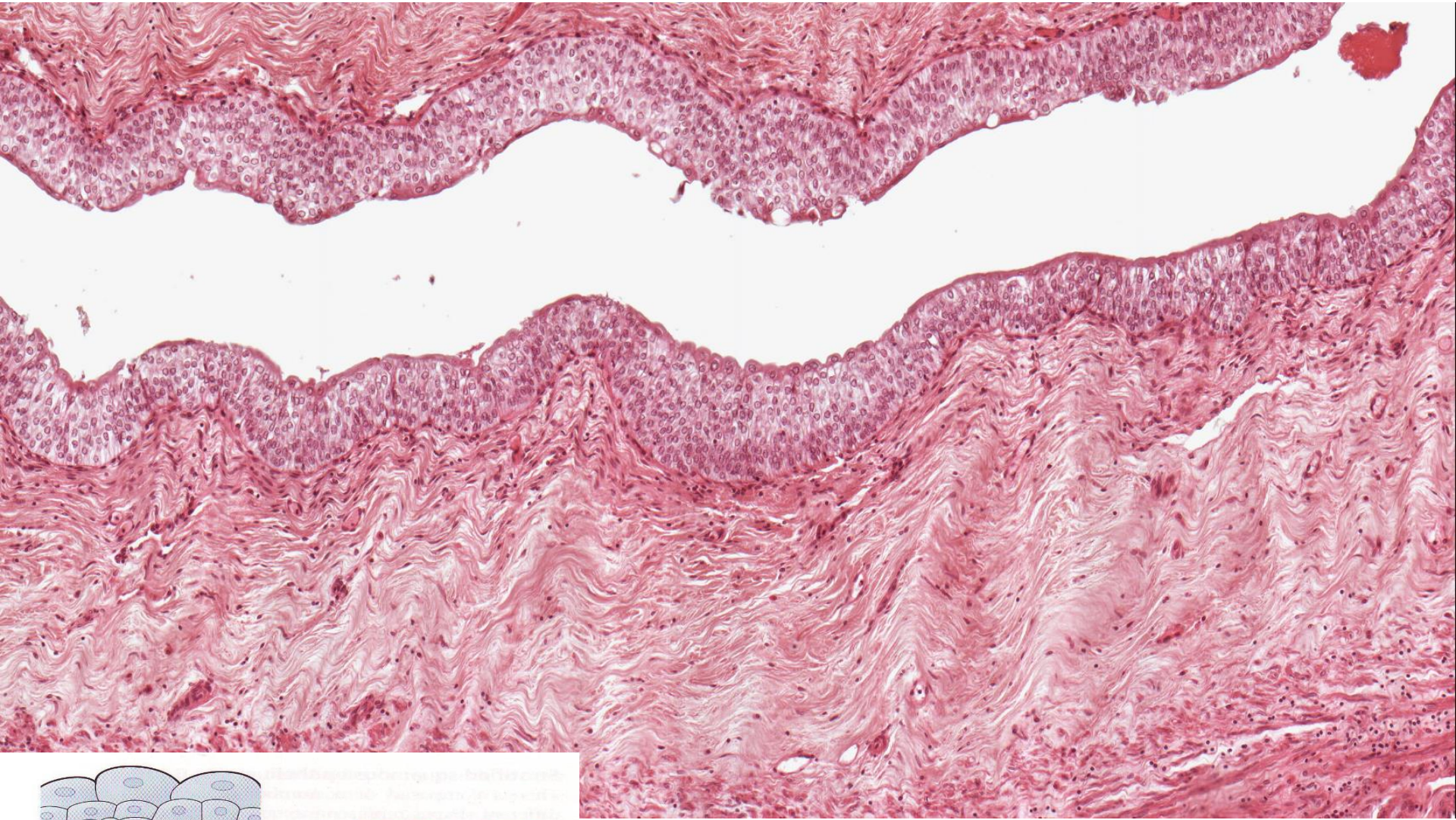
arterie

20 μm





# Calyx renalis (HE)



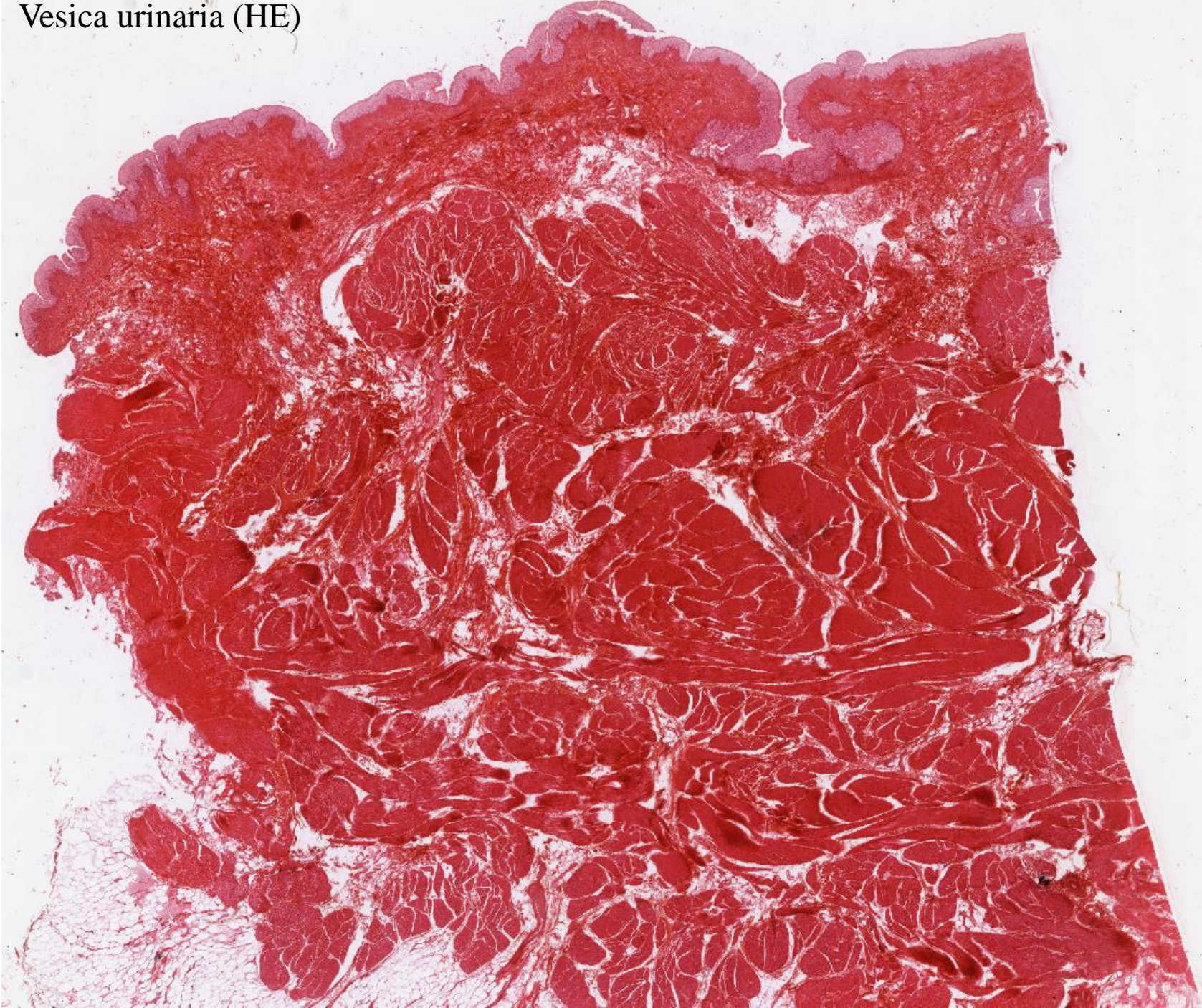
A Relaxed B Stretched

**Transitional epithelium:** A. Relaxed. B. Stretched.

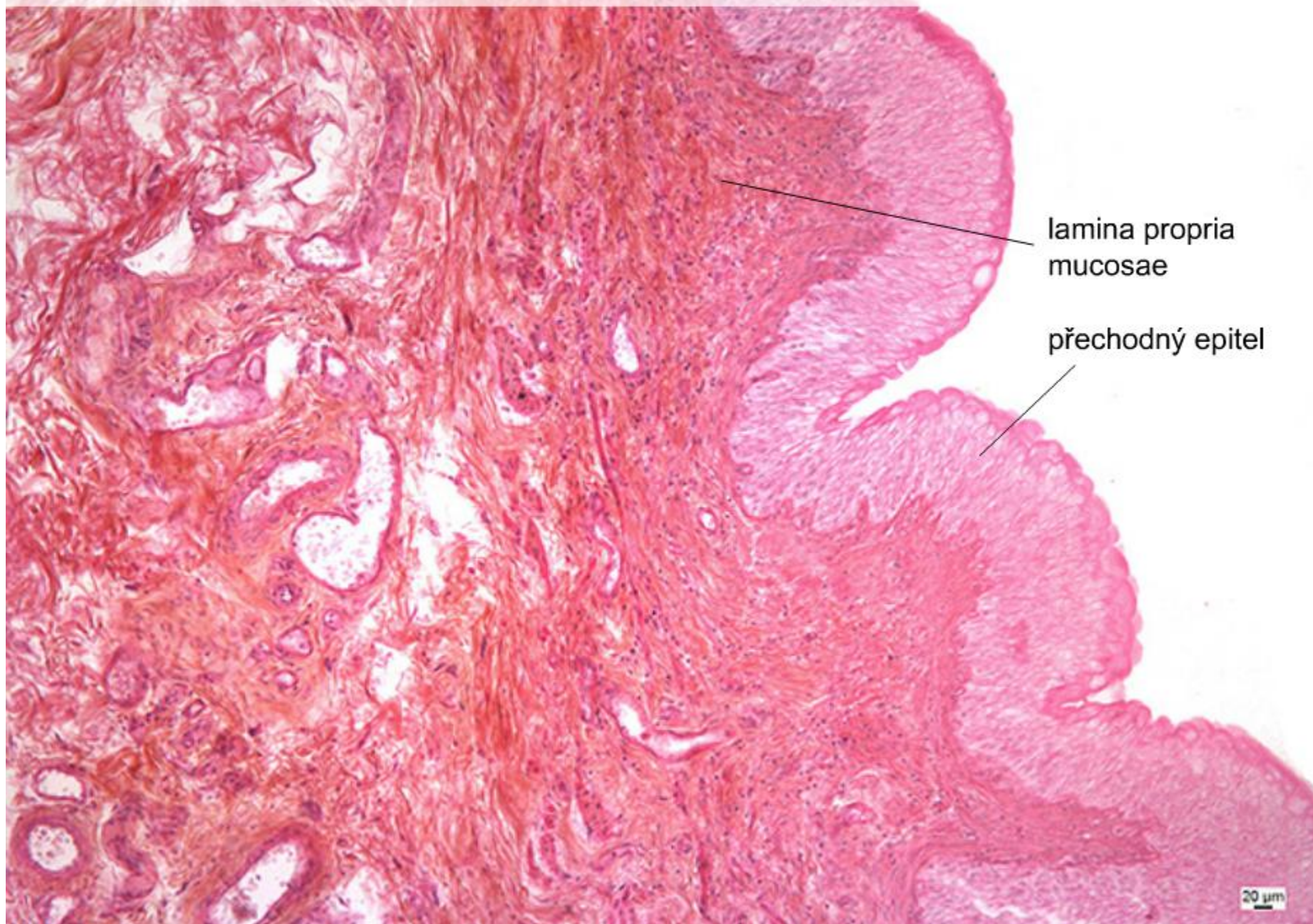
Ureter – vazivo, (HEŠ), objektiv 5×



Vesica urinaria (HE)



Vesica urinaria – tunica mucosa, (HE), objektiv 20×

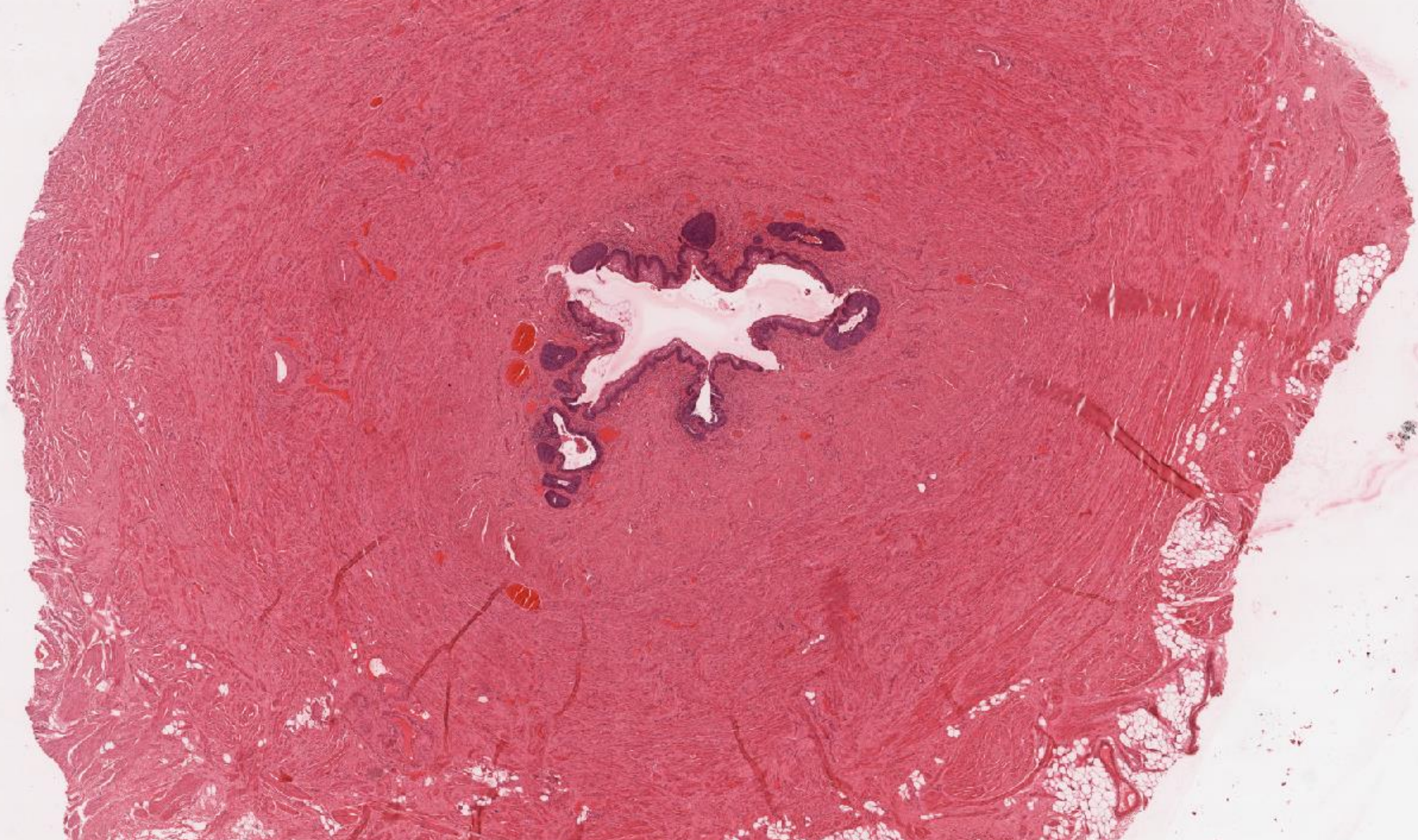
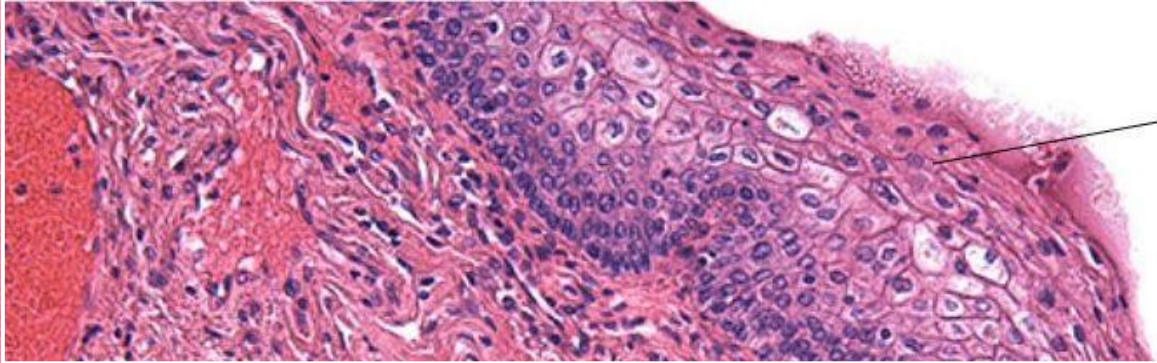


lamina propria  
mucosae

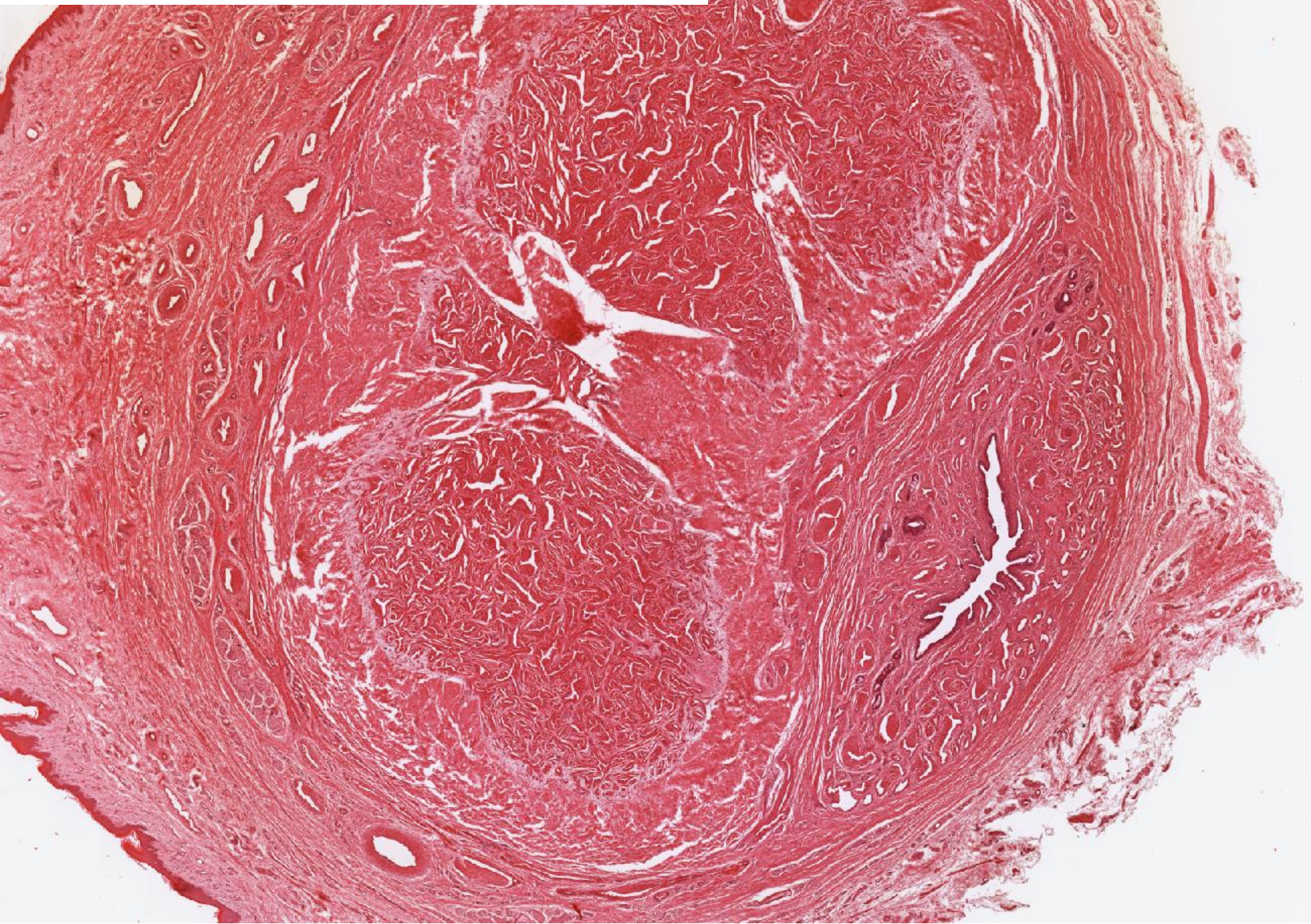
přechodný epitel

20 μm

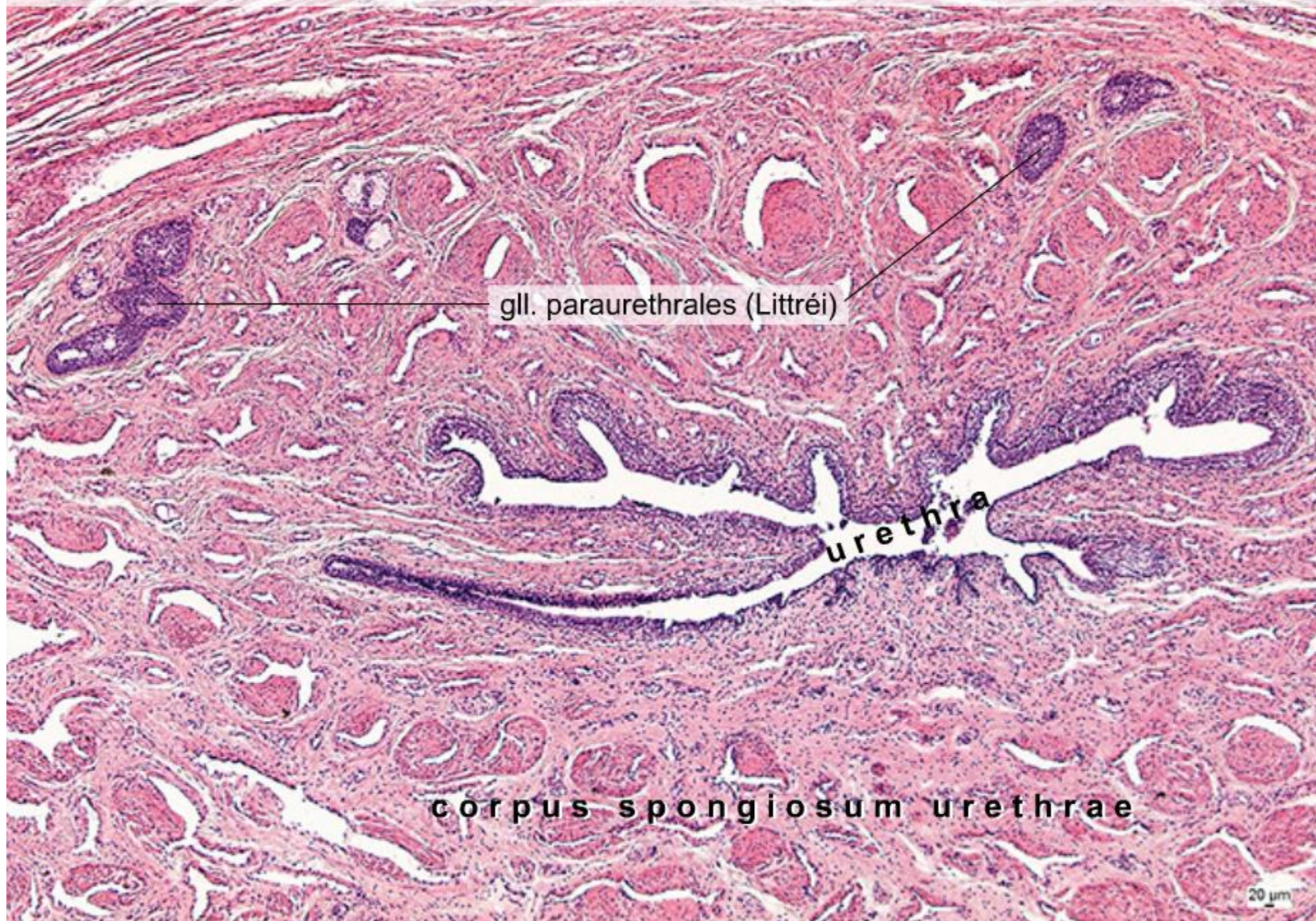
Urethra feminina (HE)



Penis – pars spongiosa urethrae masculinae (HE)



Urethra masculina – přehled, glandulae paraurethrales, (HE), objektiv 2,5×

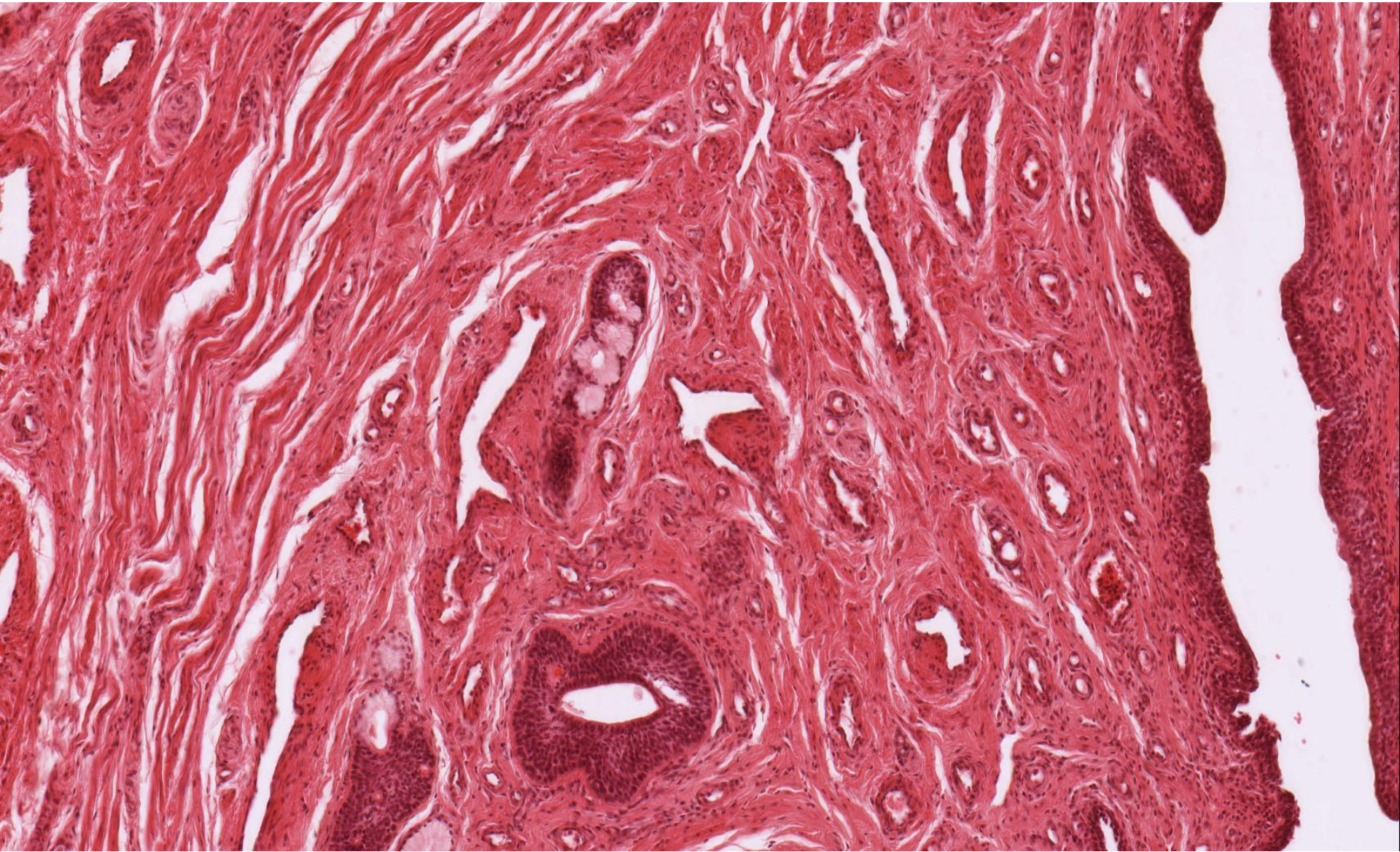


gll. paraurethrales (Littrei)

urethra

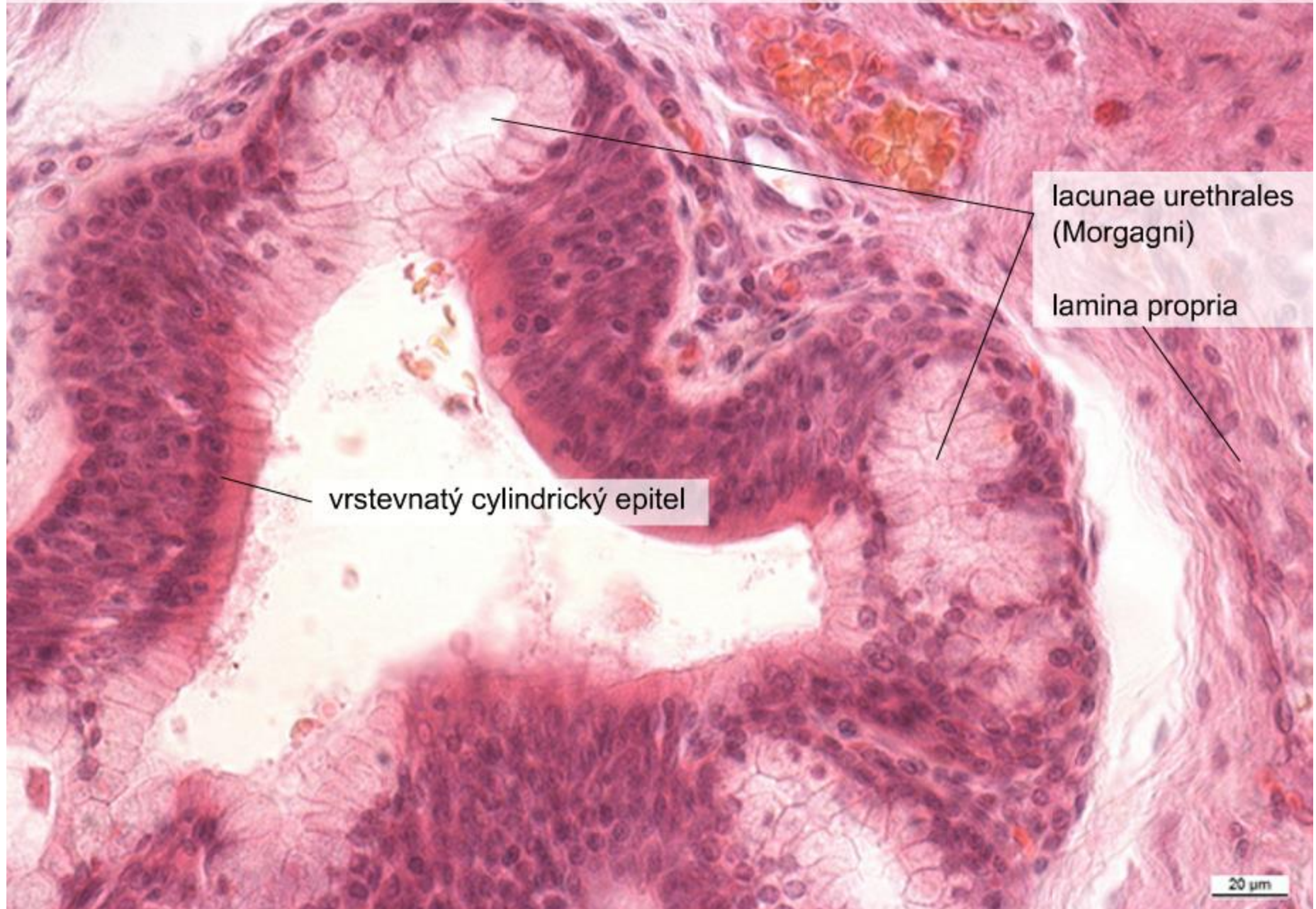
corpus spongiosum urethrae

Penis – pars spongiosa urethrae masculinae (HE)





Urethra masculina – lacunae urethrales, (HE), objektiv 40×



# MOČOVÝ SYSTÉM

## Preparáty:

- 30. Ren (HE)
- 31. Ren (Weigert – van Gieson)
- 32. Calyx renalis (HE)
- 33. Ureter (HE)
- 34. Vesica urinaria (HE)
- 35. Urethra feminina (HE)
- 41. Penis – pars spongiosa urethrae masculinae (HE)

## Atlas EM: kartáčový lem (26)

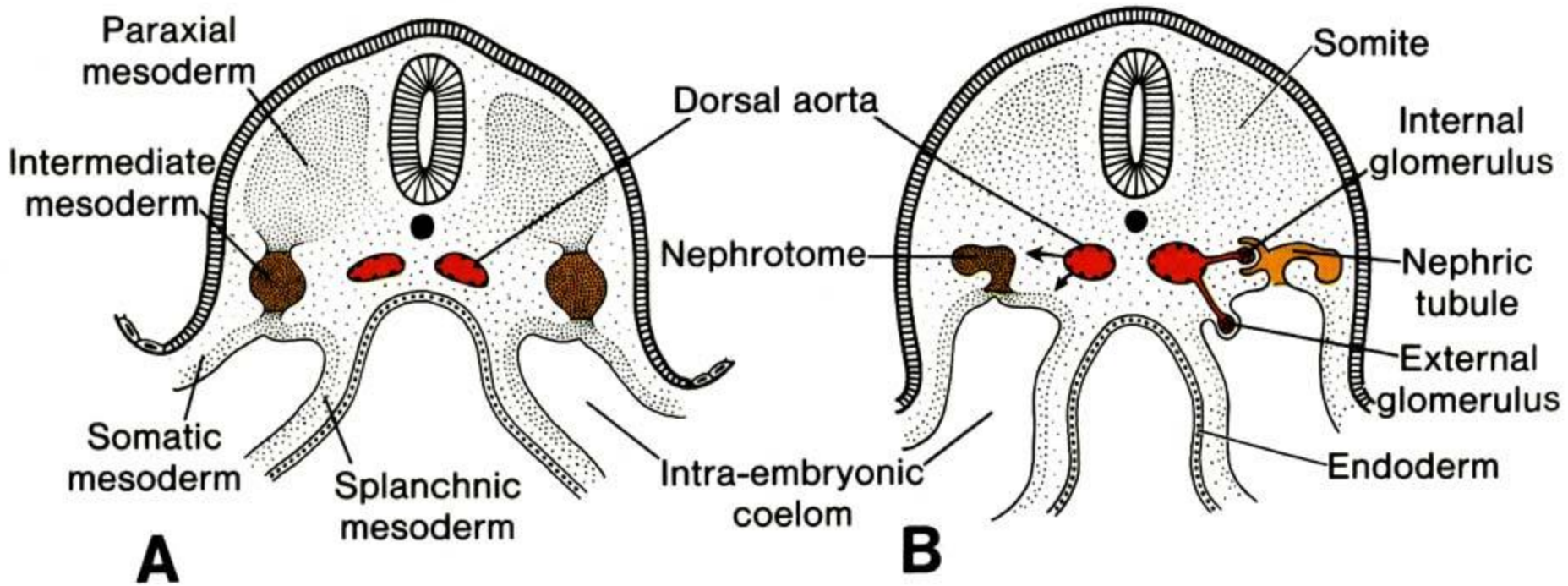
bazální labyrint (27)

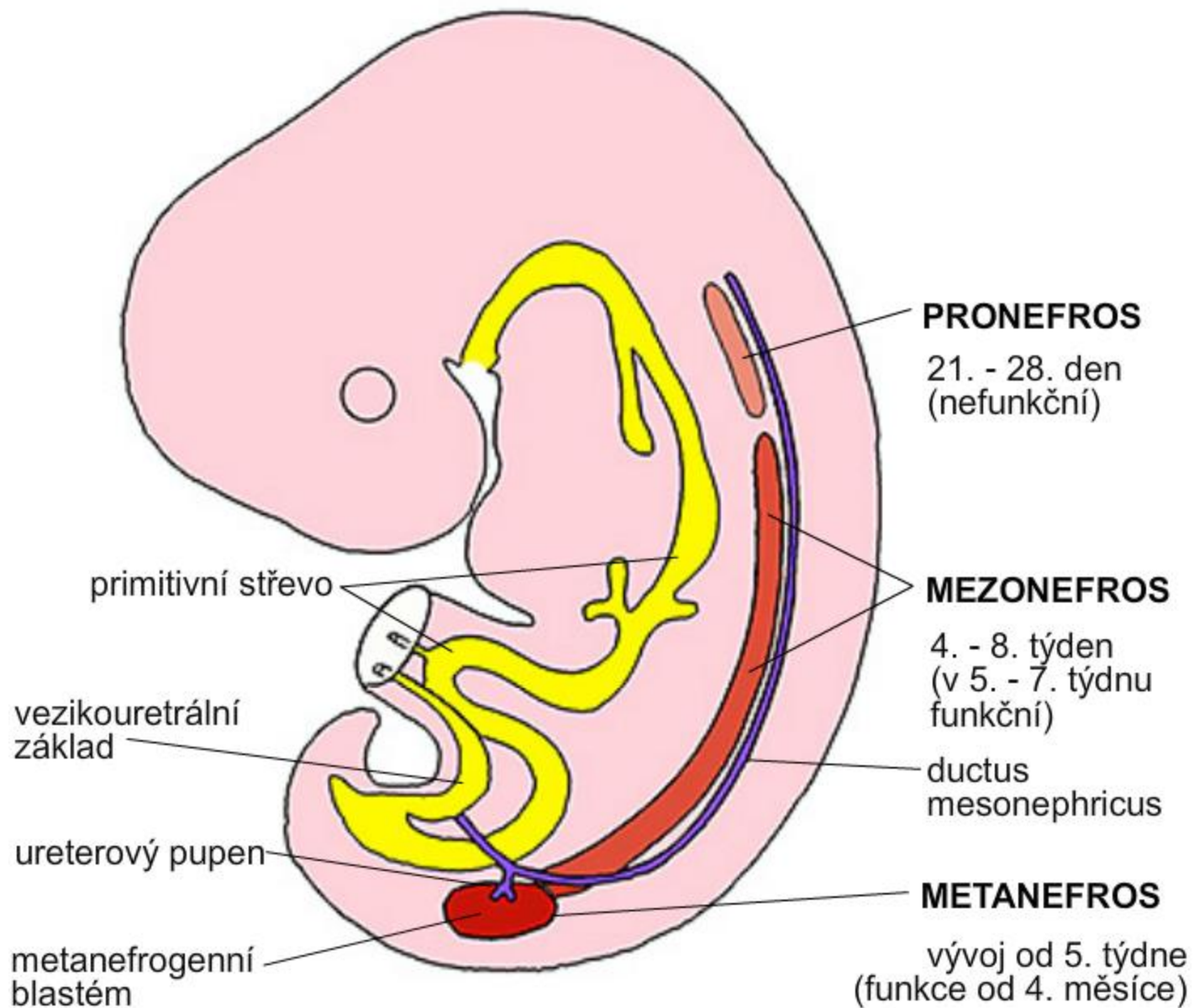
fenestrovaná kapilára glomerulu (57)

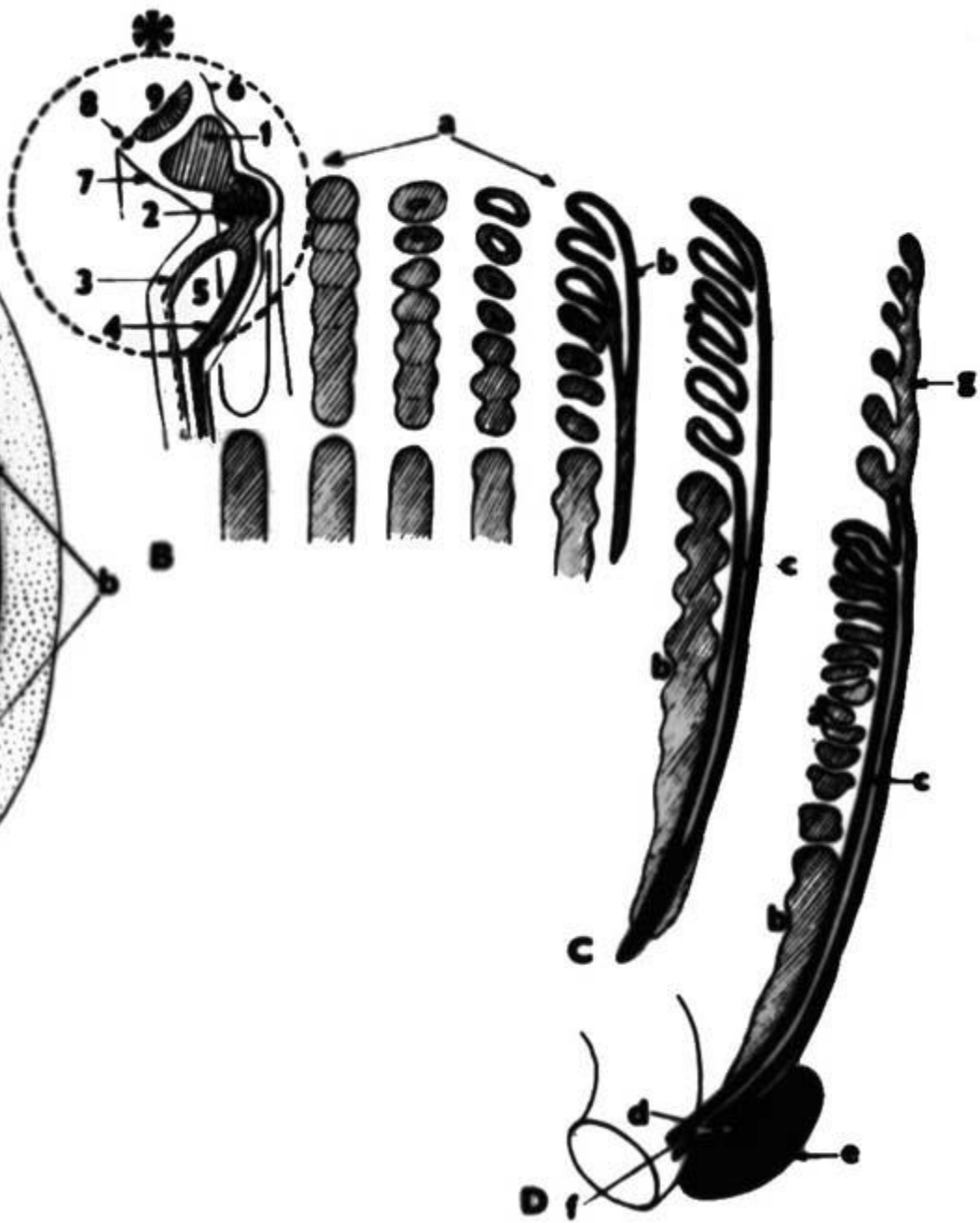
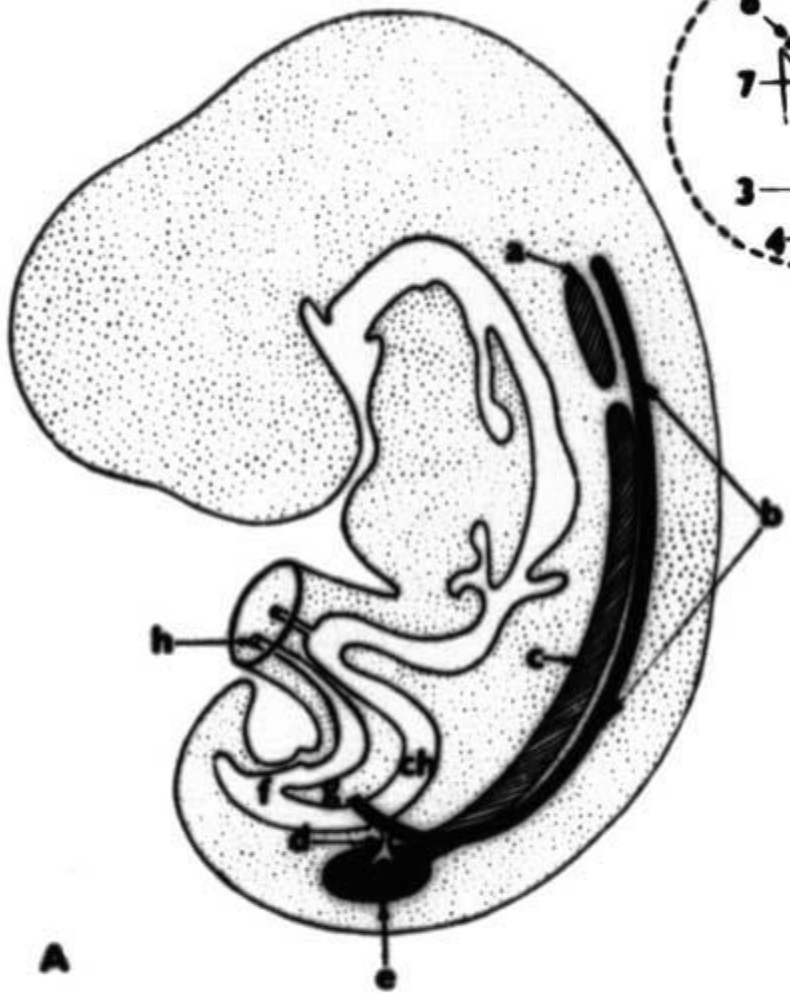
corpusculum renis s filtrační bariérou (69)

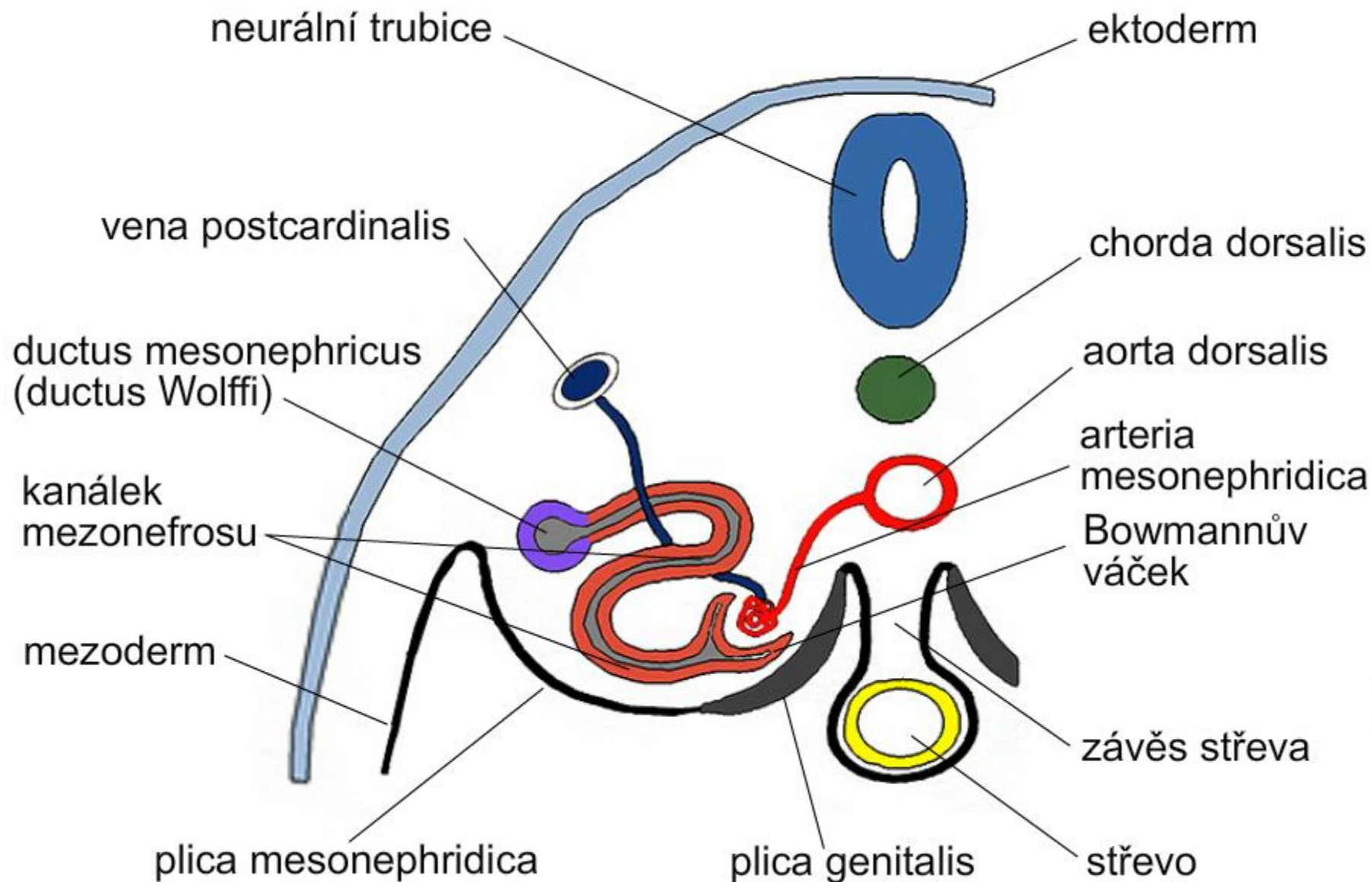
tubulus proximalis et distalis (70)

vývoj ledvin (94)







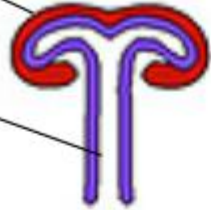


# Vývoj nefronu

metanefrogenní  
blastém

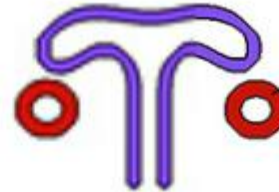
sběrací  
kanálek

**A**



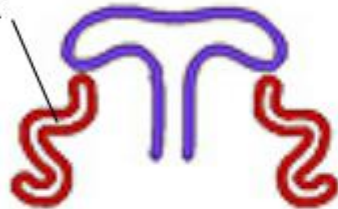
ledvinný  
váček

**B**



nefronový  
kanálek

**C**



glomerulus

**D**



Henleova  
klička

**E**



proximální  
tubulus

**F**

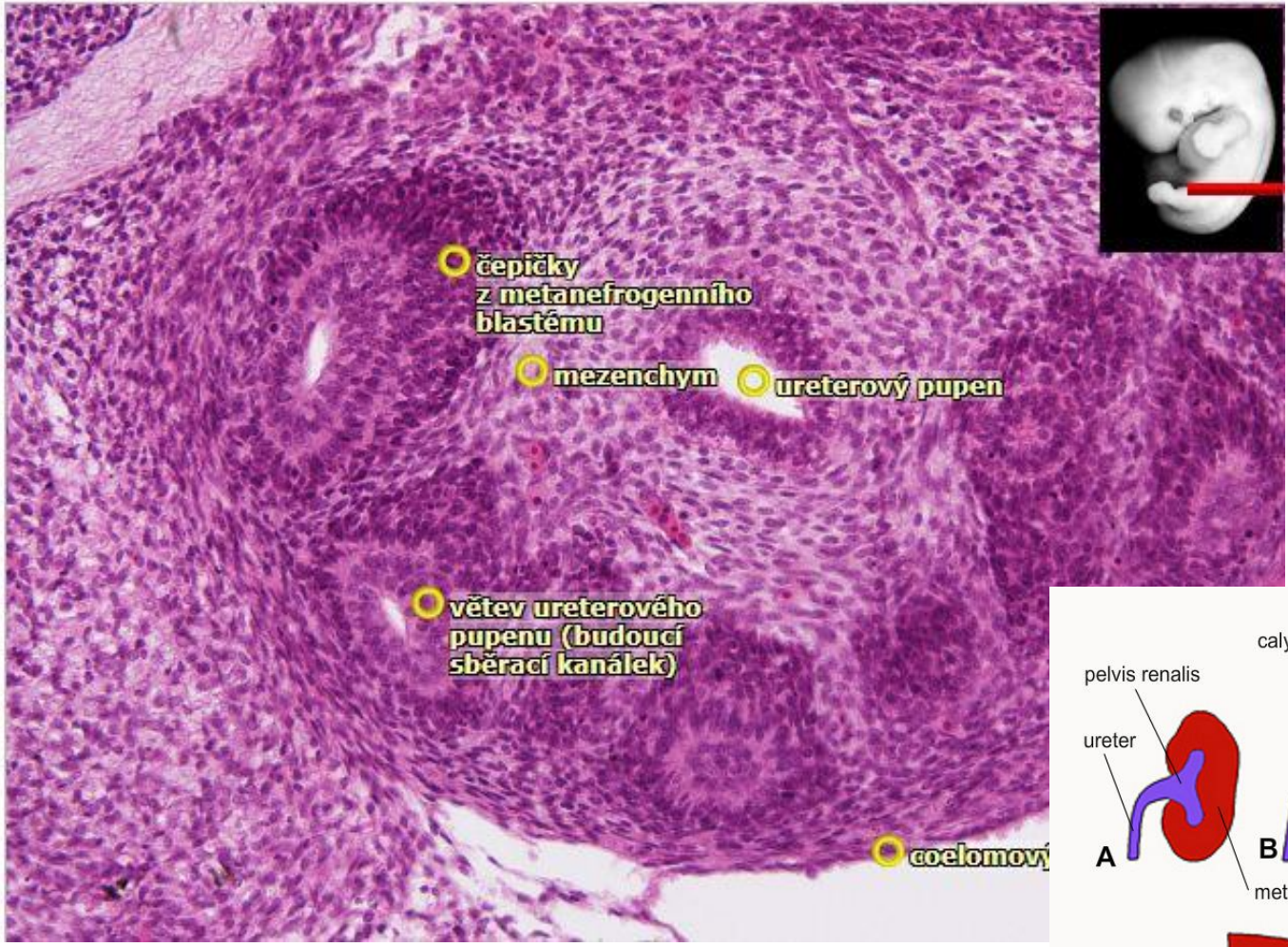


distální  
tubulus

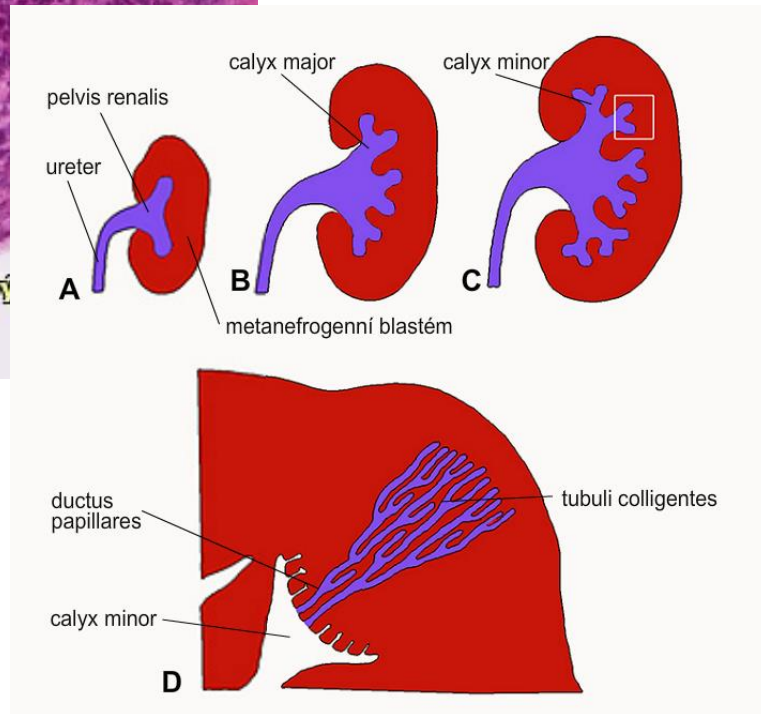
Bowmannův  
váček

Henleova  
klička

6-2 Zárodek člověka (7. týden) – příčný řez trupem, HE, zvětšení 200x



<https://is.muni.cz/do/rect/el/estud/lf/ps15/atlas/web/atlas.html?chapter=7&prep=2>





# Septace kloaky

