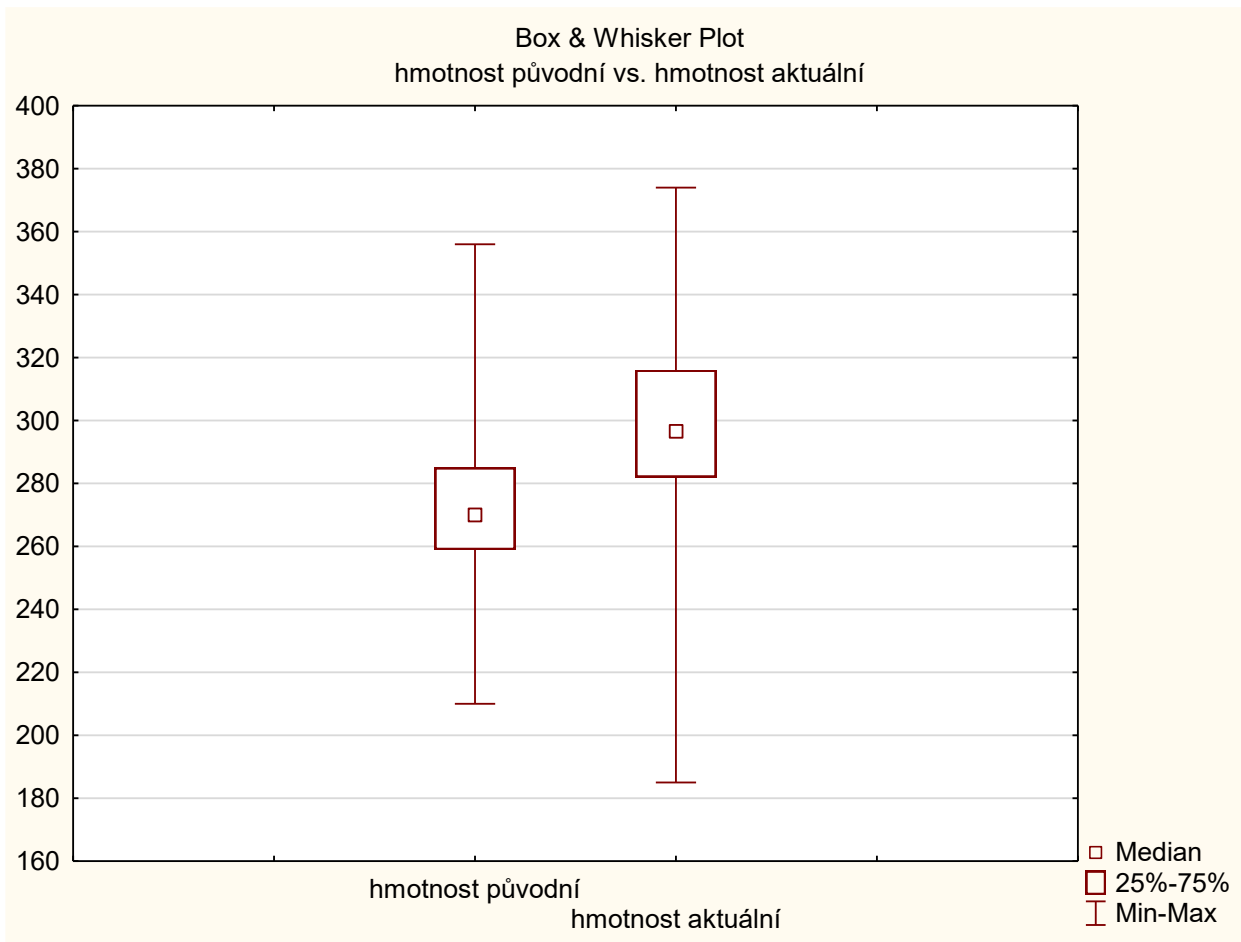


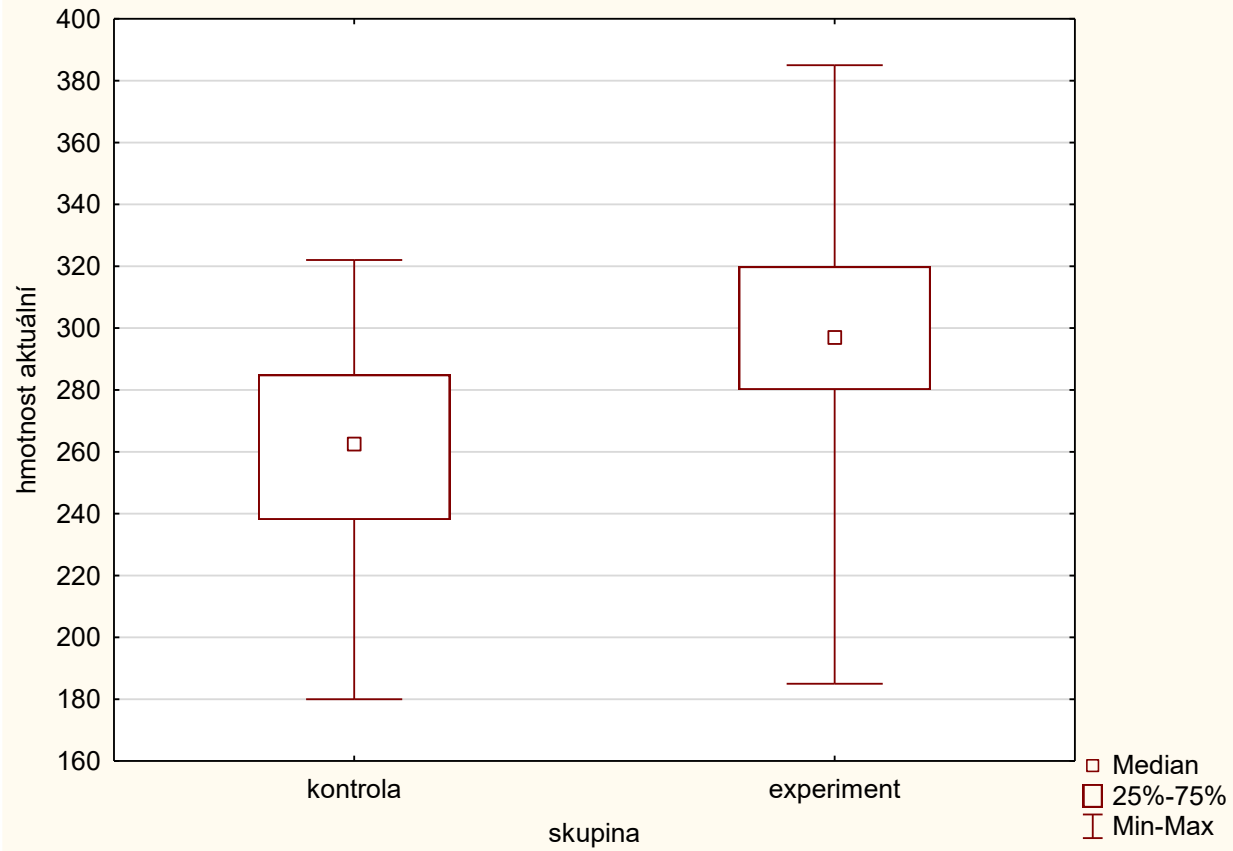
Hmotnost před 3 týdny a v čase hodnocení: párový t-test



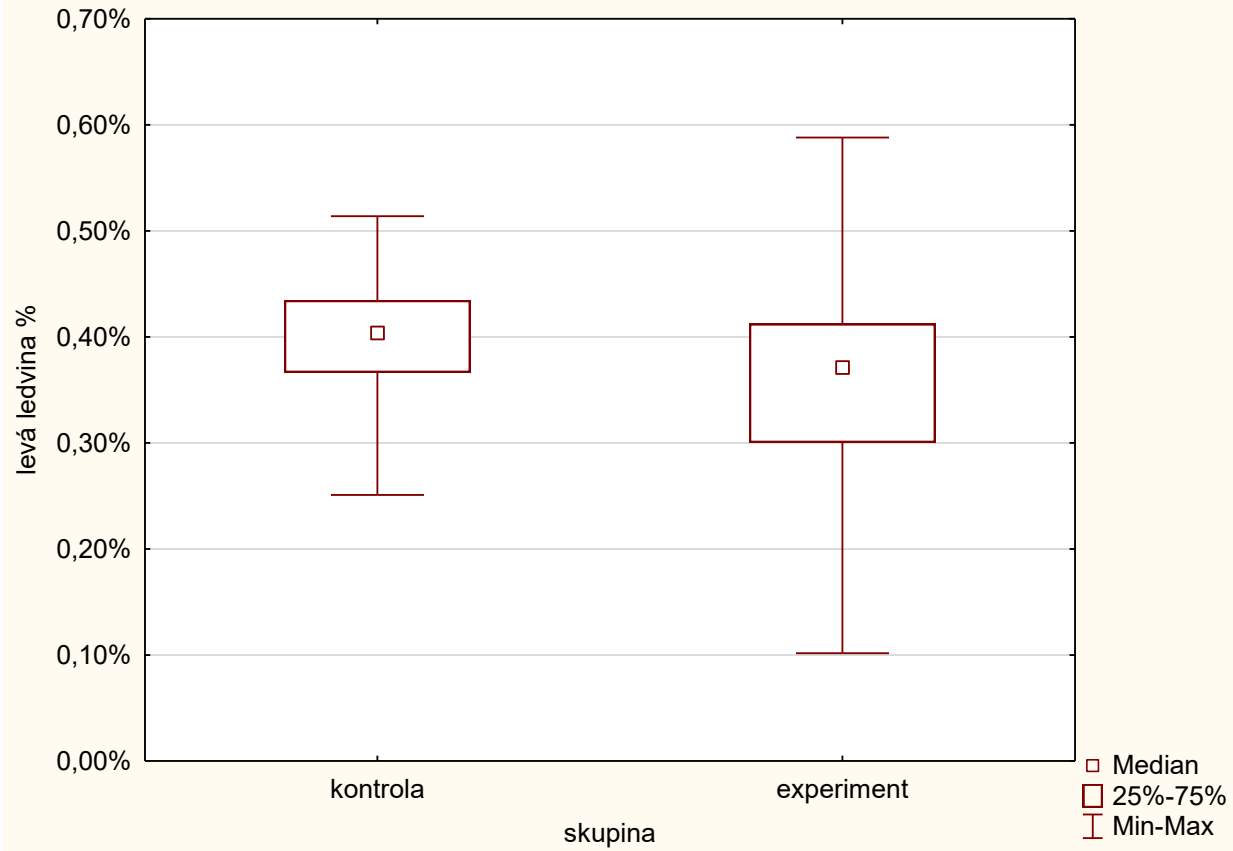
T-test for Dependent Samples (renin_corr_2020) Marked differences are significant at $p < ,05000$										
Variable	Mean	Std.Dv.	N	Diff.	Std.Dv. Diff.	t	df	p	Confidence -95,000%	Confidence +95,000%
hmotnost původní	272,7414	25,84879								
hmotnost aktuální	298,8103	33,92327	58	-26,0690	28,22023	-7,03521	57	0,000000	-33,4891	-18,6488

Srovnání parametrů u experimentálních a kontrolních zvířat: Mann-Whitney U-test:

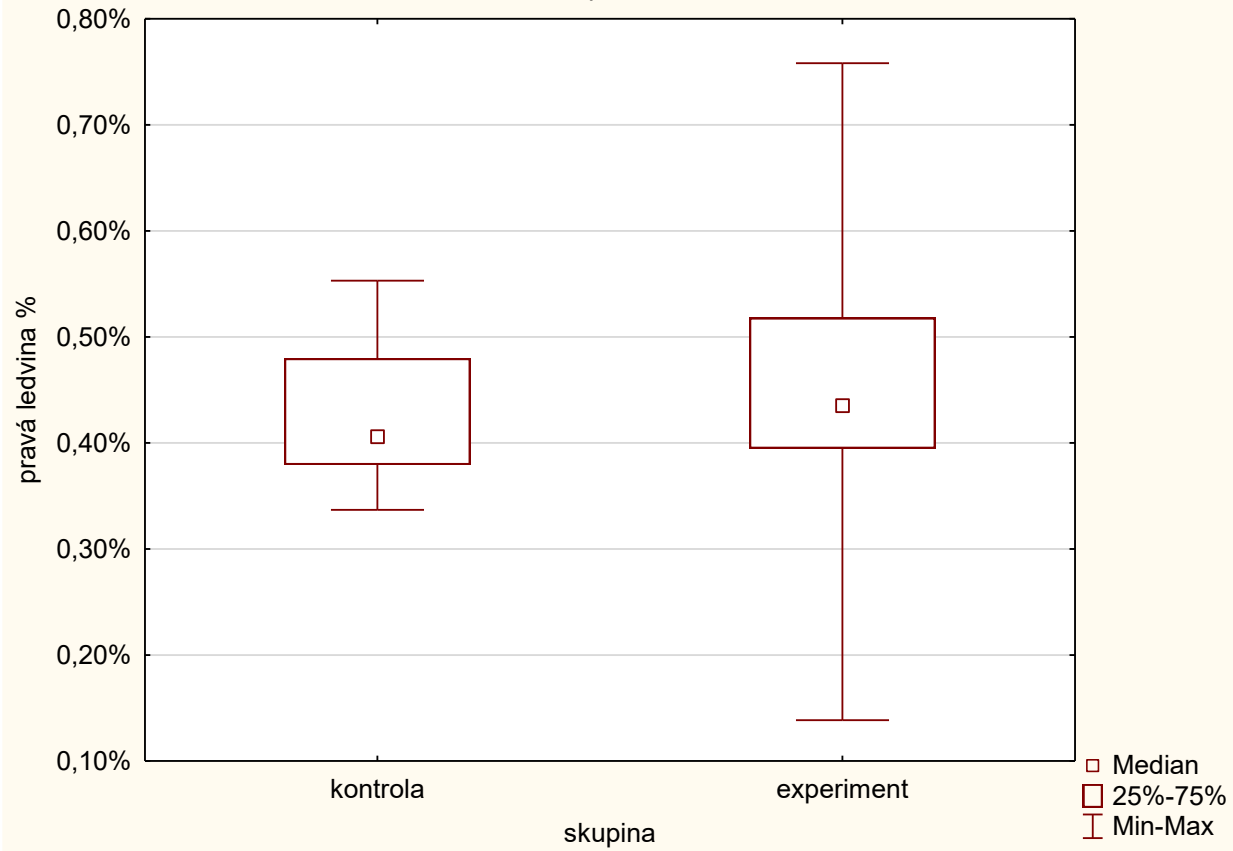
Boxplot by Group  
Variable: hmotnost aktuální



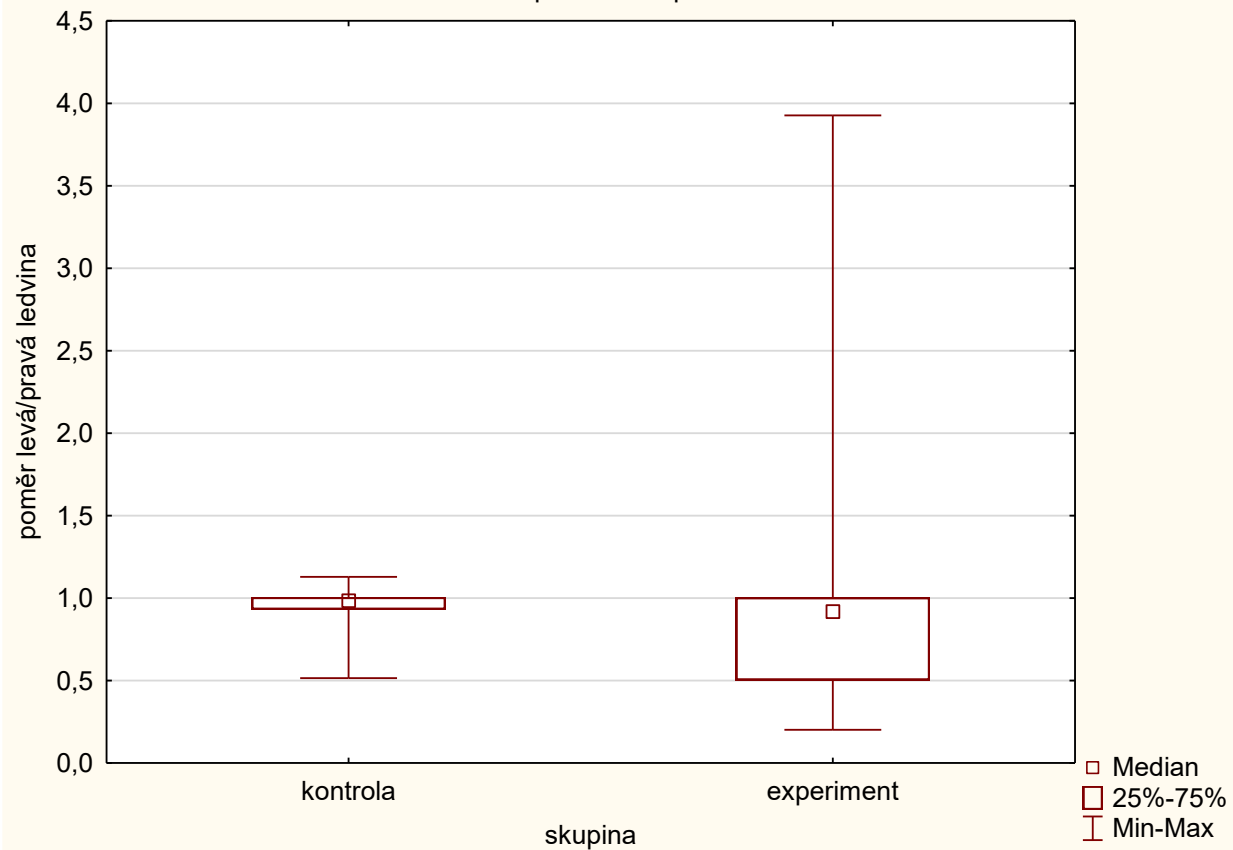
Boxplot by Group  
Variable: levá ledvina %

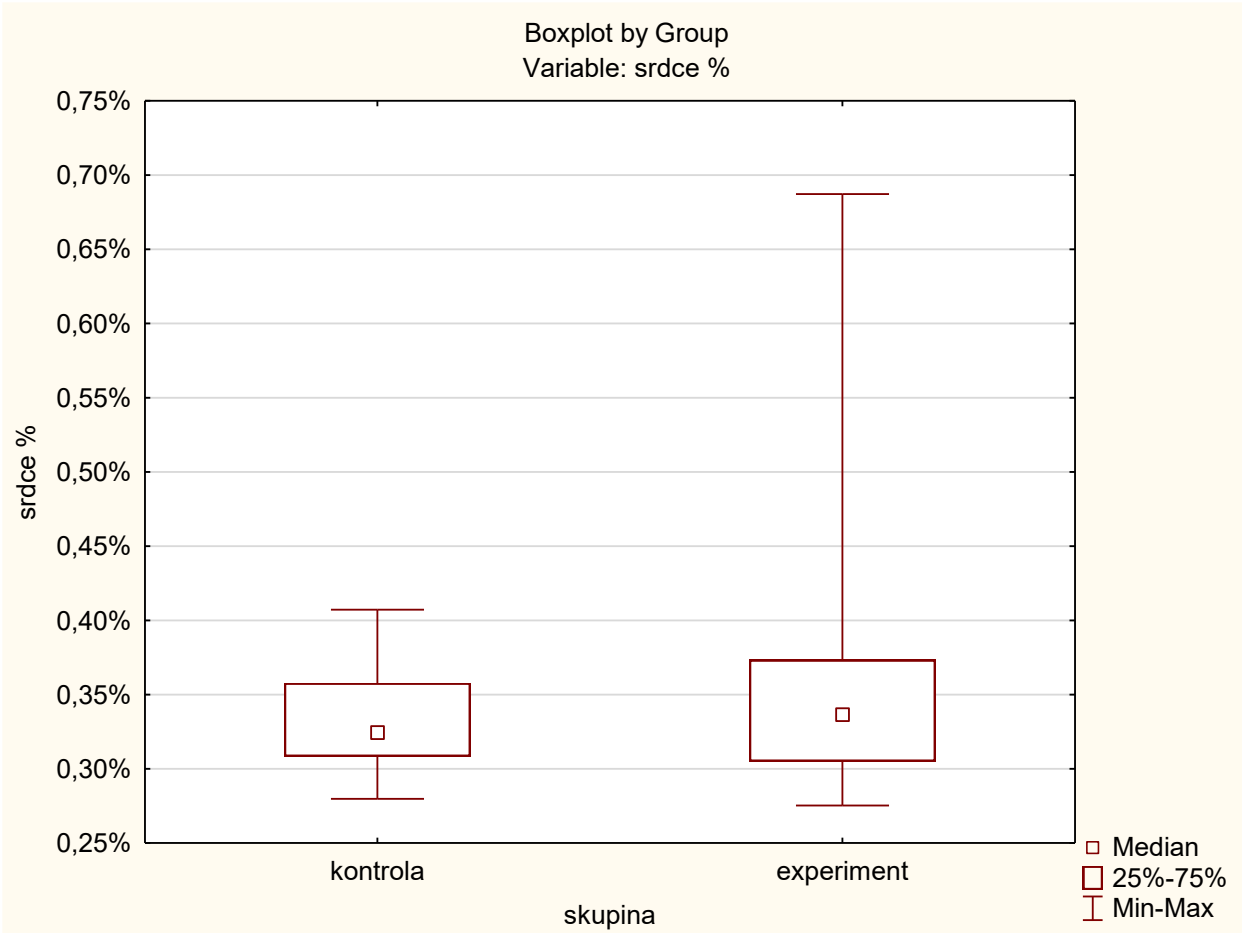


Boxplot by Group  
Variable: pravá ledvina %



Boxplot by Group  
Variable: poměr levá/pravá ledvina

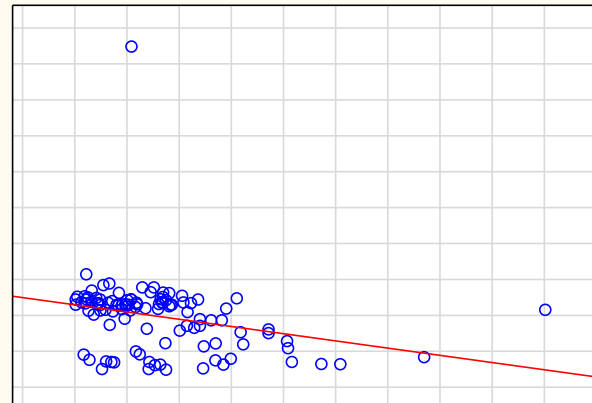
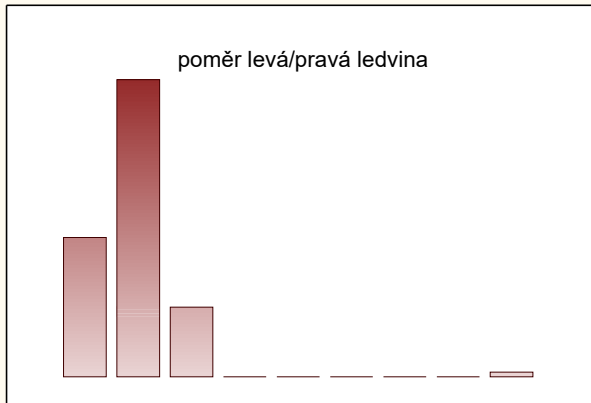
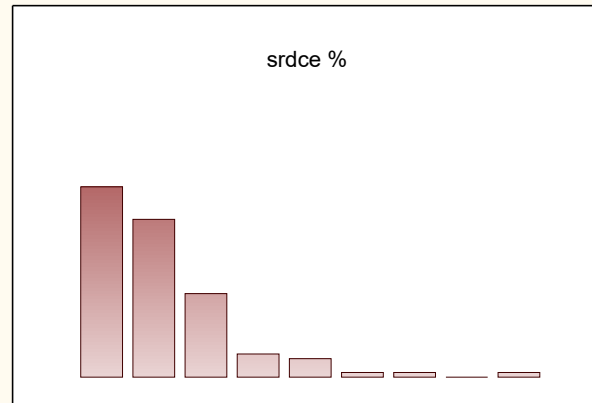




Mann-Whitney U Test (w / continuity correction) (renin_corr_2020)										
By variable skupina										
Marked tests are significant at p <,05000										
variable	Rank Sum kontrola	Rank Sum experiment	U	Z	p-value	Z adjusted	p-value	Valid N kontrola	Valid N experiment	2*1sided exact p
hmotnost aktuální	1479,000	8532,000	813,000	-5,08996	0,000000	-5,09104	0,000000	36	105	0,000000
levá ledvina %	3152,500	6717,500	1257,500	2,92740	0,003418	2,92741	0,003418	36	104	0,003118
pravá ledvina %	2073,500	7937,500	1407,500	-2,27902	0,022667	-2,27903	0,022666	36	105	0,022066
poměr levá/pravá ledvina	3408,500	7469,500	1364,500	2,99046	0,002786	2,99046	0,002786	37	110	0,002526
srdce %	2276,000	7594,000	1646,000	-0,91915	0,358019	-0,91915	0,358017	35	105	0,359638

Korelace mezi poměrem ledvin a hmotností srdce u experimentů a kontrol:

Correlations (renin\_corr\_2020 46v\*215c)  
 Include condition: 'skupina'='experiment'

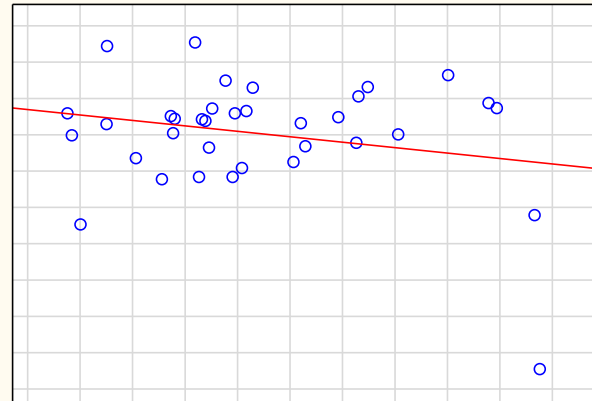
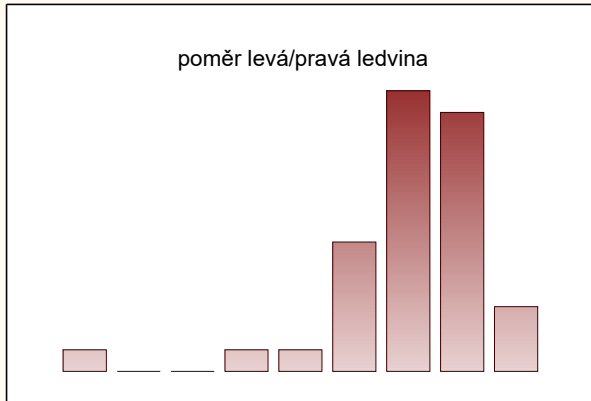
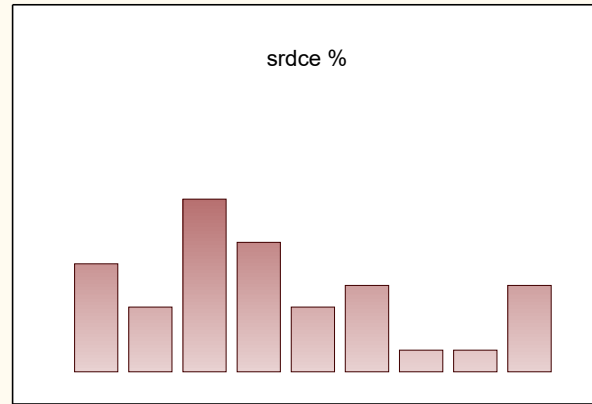


Spearman Rank Order Correlations (renin\_corr\_2020)  
 MD pairwise deleted  
 Marked correlations are significant at  $p < 0,05000$   
 Include condition: 'skupina'='experiment'

Pair of Variables	Valid N	Spearman R	t(N-2)	p-value
poměr levá/pravá ledvina & srdce %	105	-0,384809	-4,23121	0,000051

Correlations (renin\_corr\_2020 46v\*215c)

Include condition: 'skupina'='kontrola'



Spearman Rank Order Correlations (renin\_corr\_2020)  
 MD pairwise deleted  
 Marked correlations are significant at  $p < 0,05000$   
 Include condition: 'skupina'='kontrola'

Pair of Variables	Valid N	Spearman R	t(N-2)	p-value
poměr levá/pravá ledvina & srdce %	35	0,077311	0,445451	0,658903