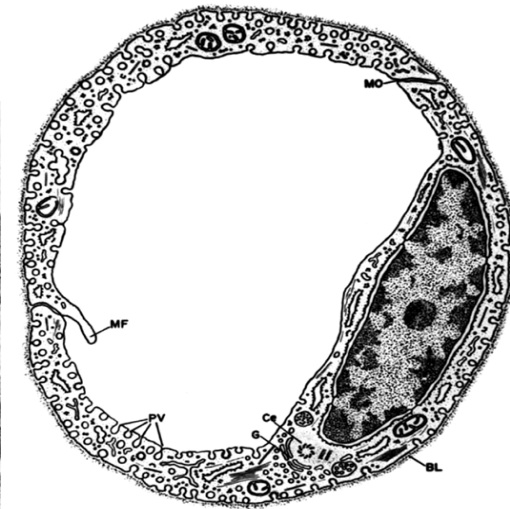
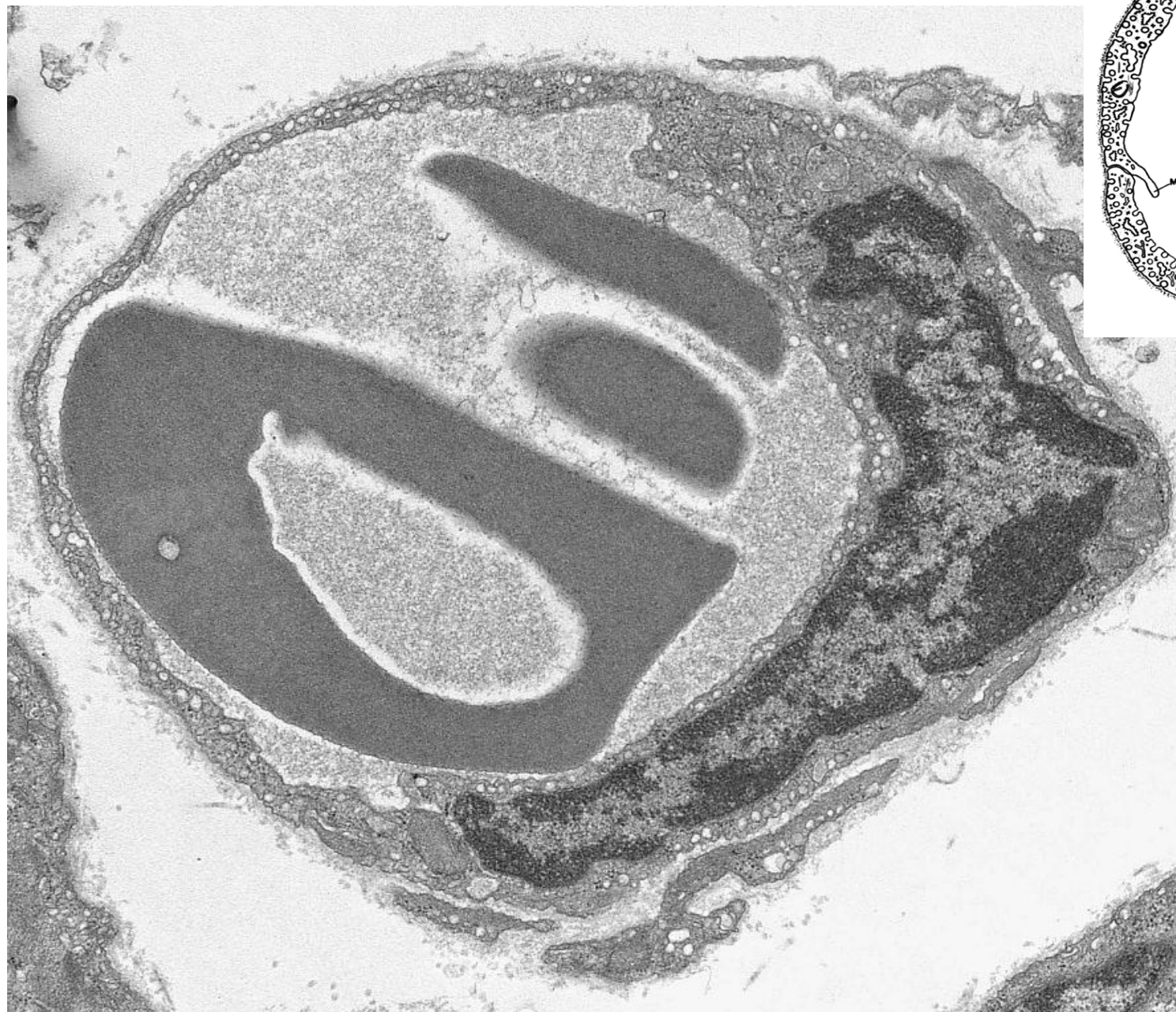




KARDIOVASKULÁRNÍ SYSTÉM

- Srdce
- Cévy
 - arterie
 - vény
 - kapiláry
 - se souvislou výstelkou
 - fenestrované
 - sinusoidy

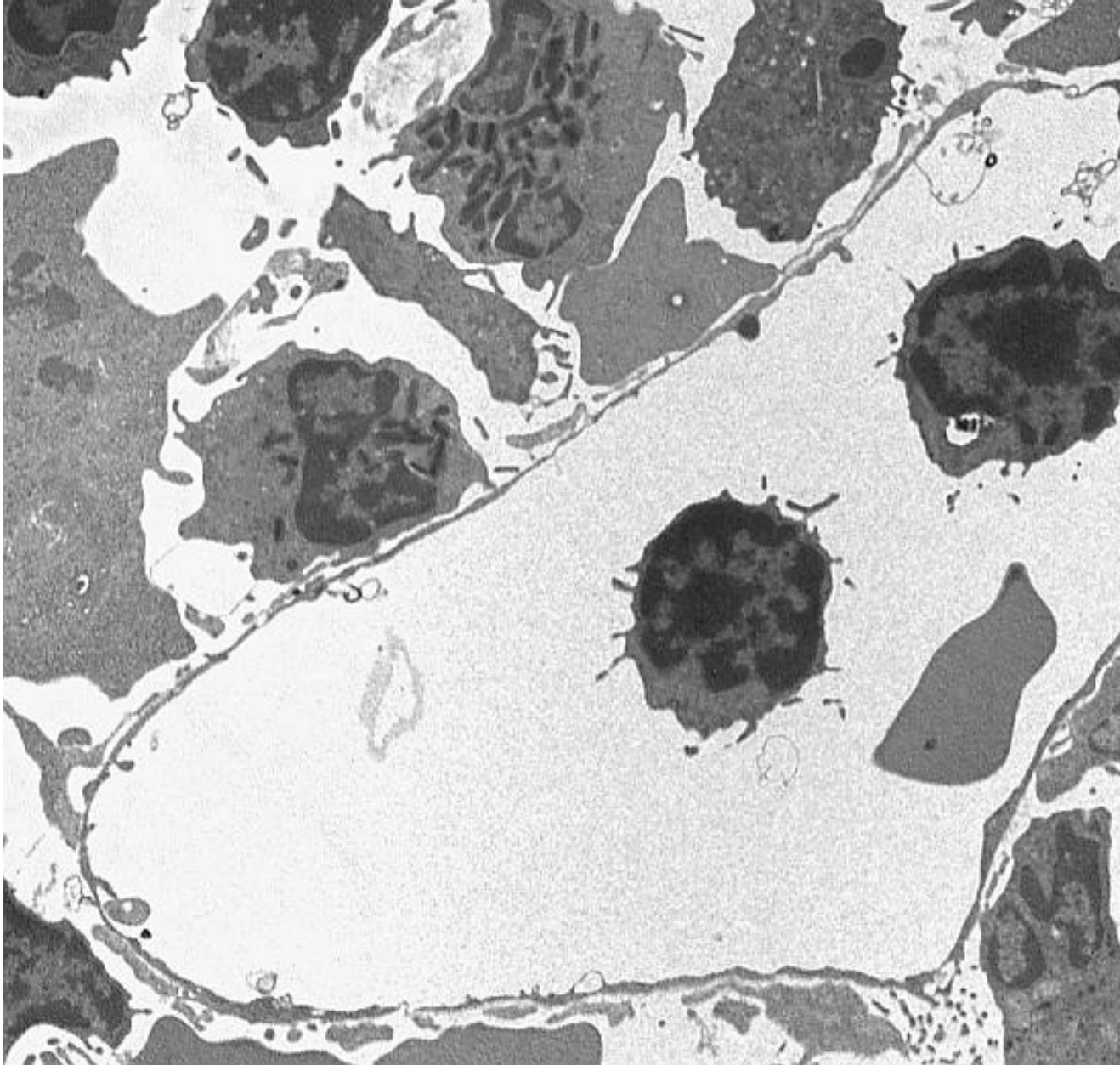
kapilára se souvislou výstelkou



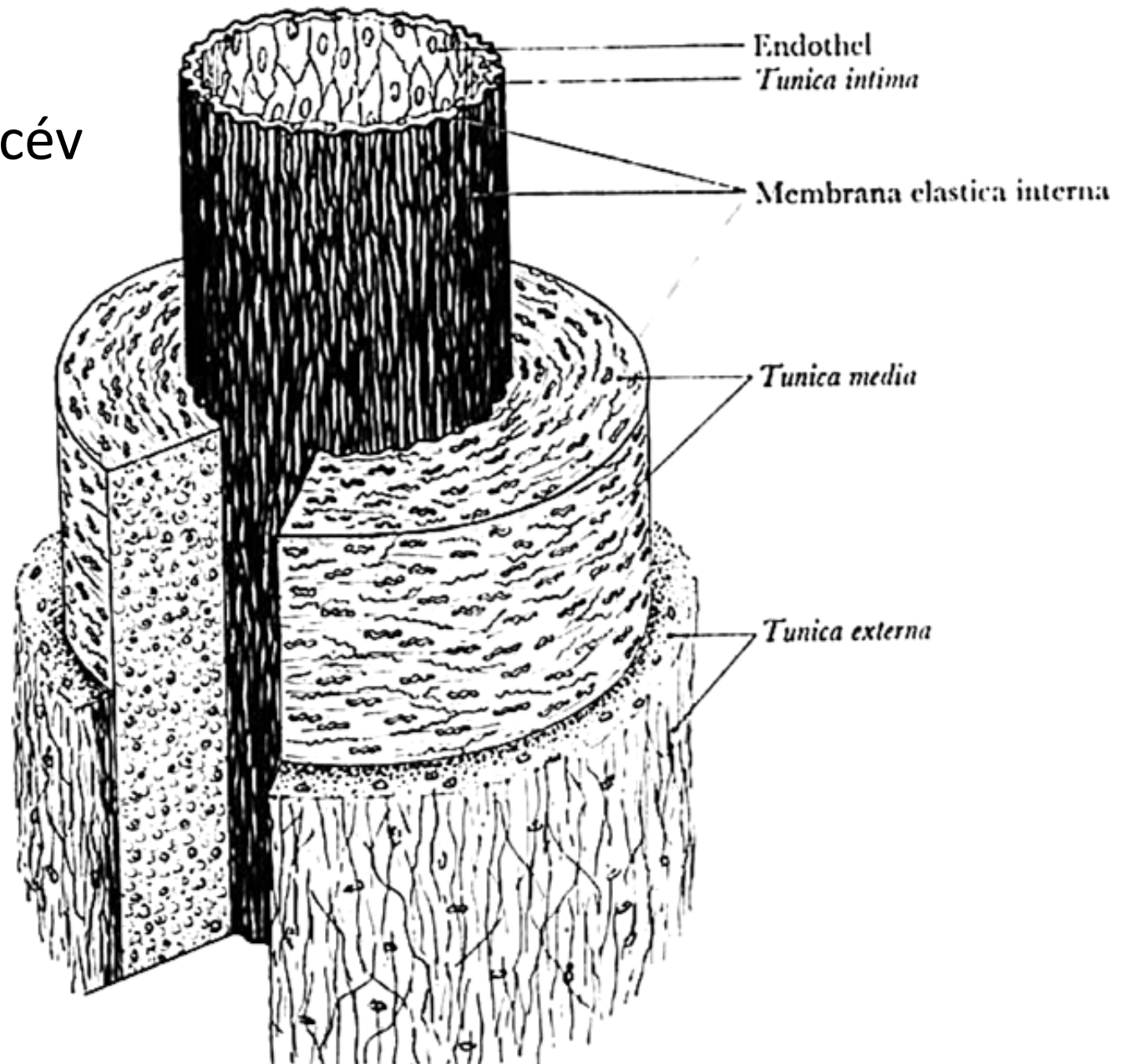
kapilára fenestrovaná



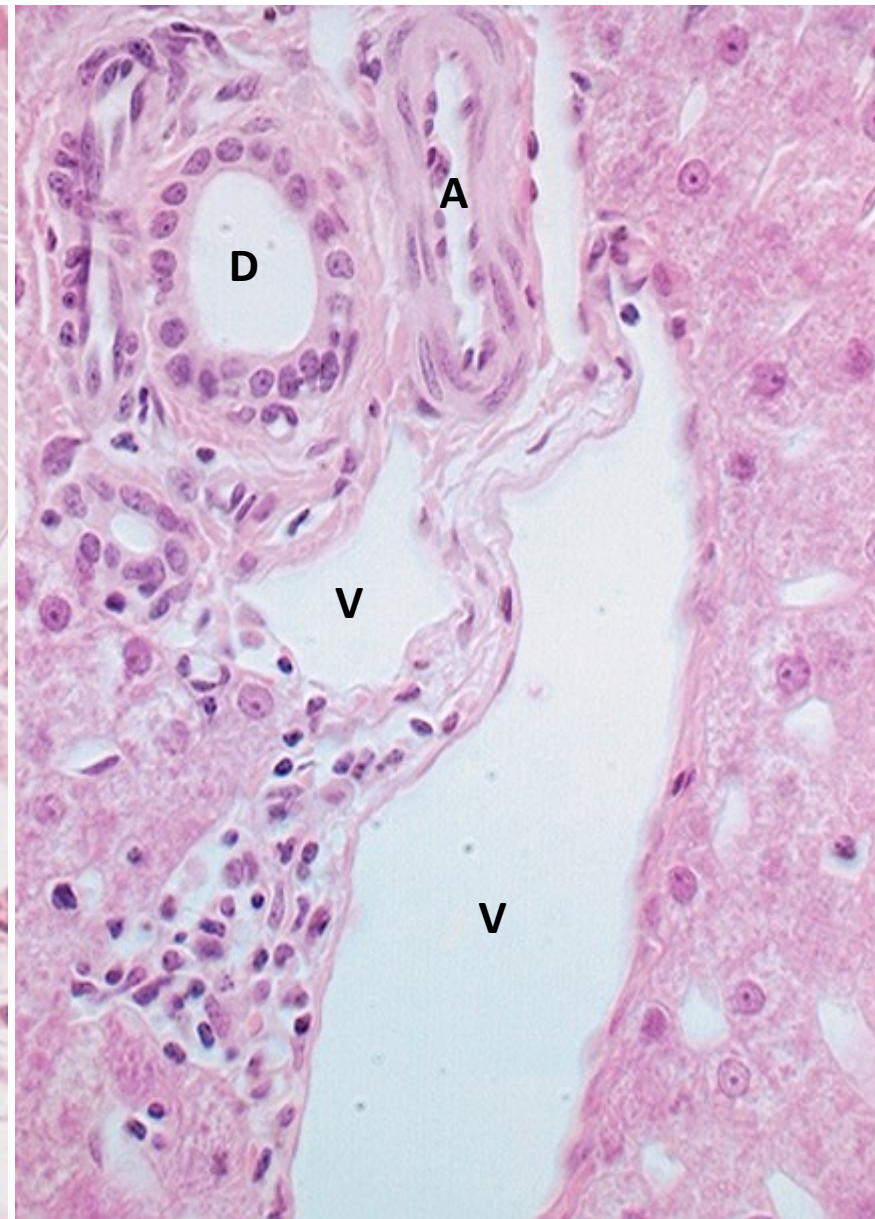
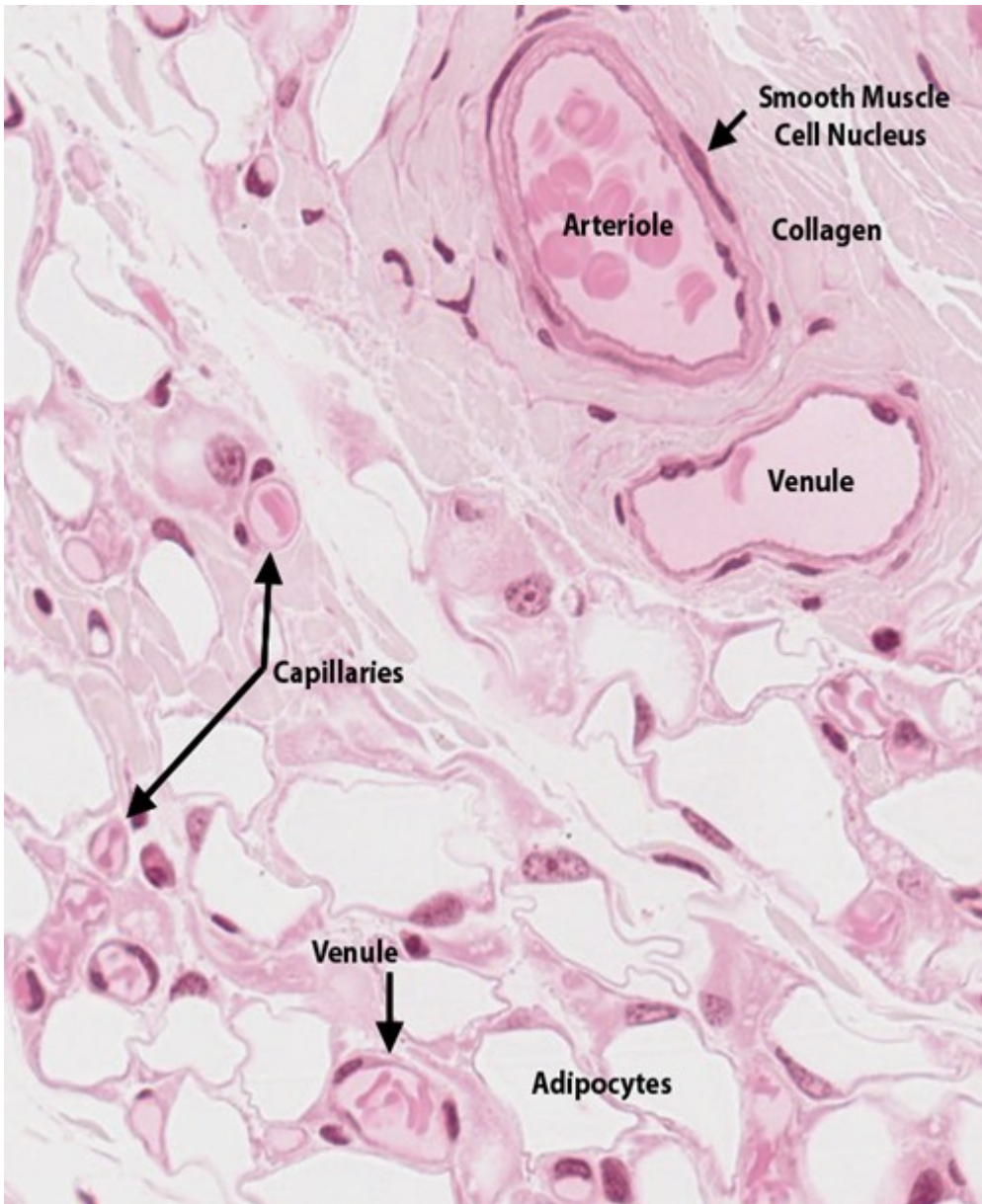
sinusoida



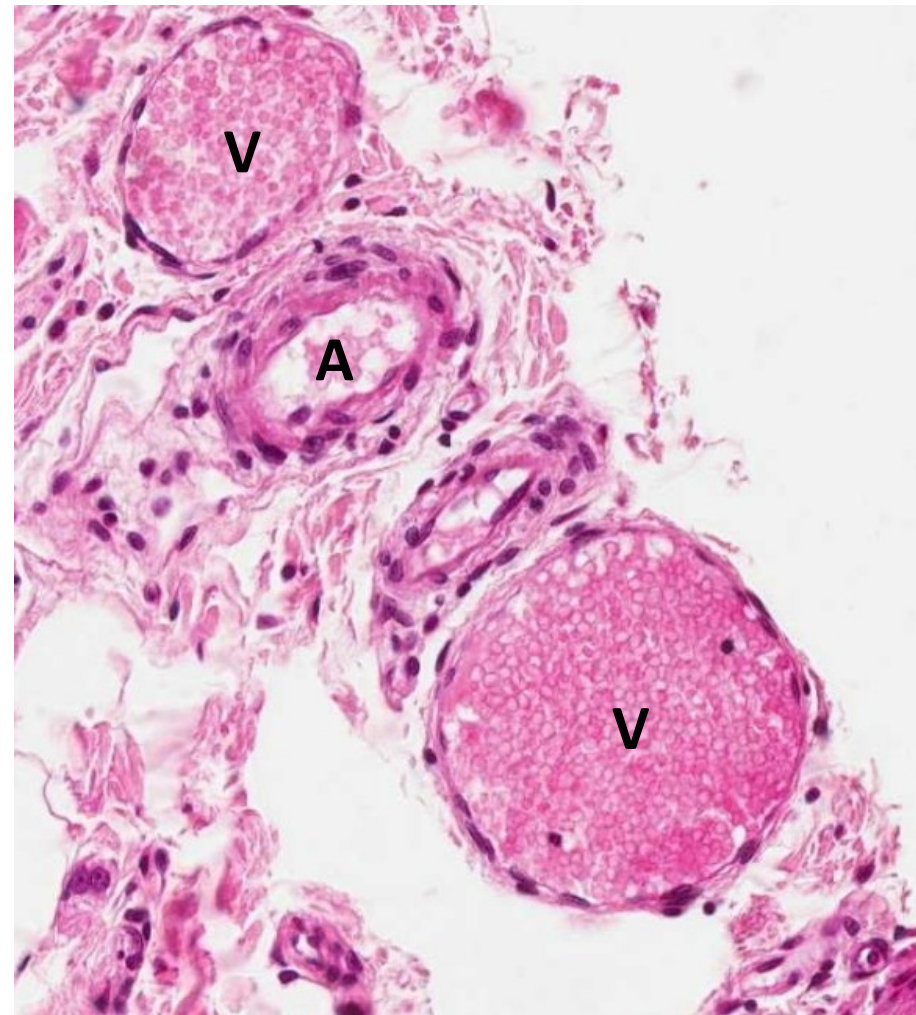
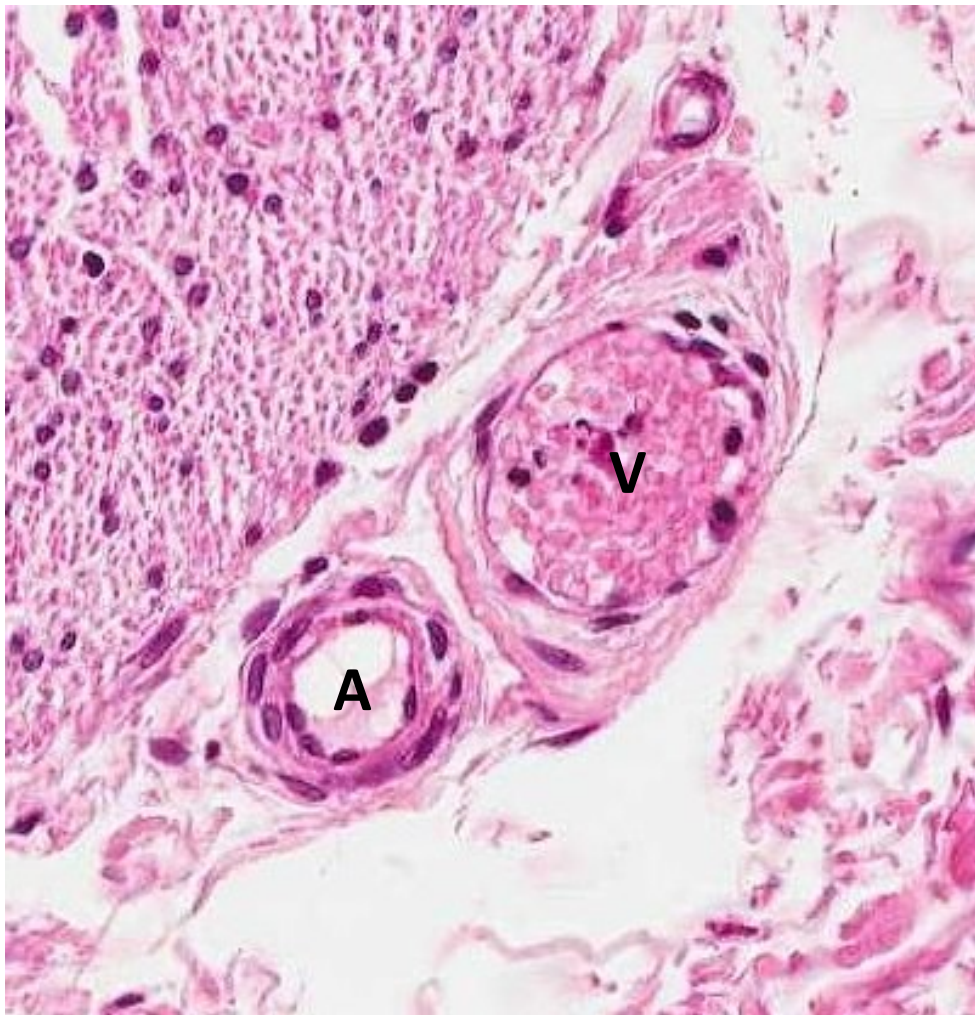
obecná stavba
krevních cév



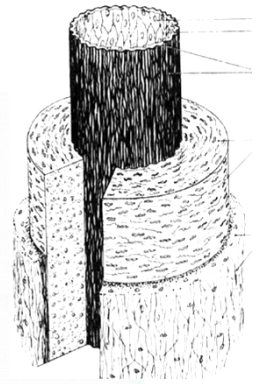
kapiláry, arterioly, venuly [endotel], vývody žláz [epitel]



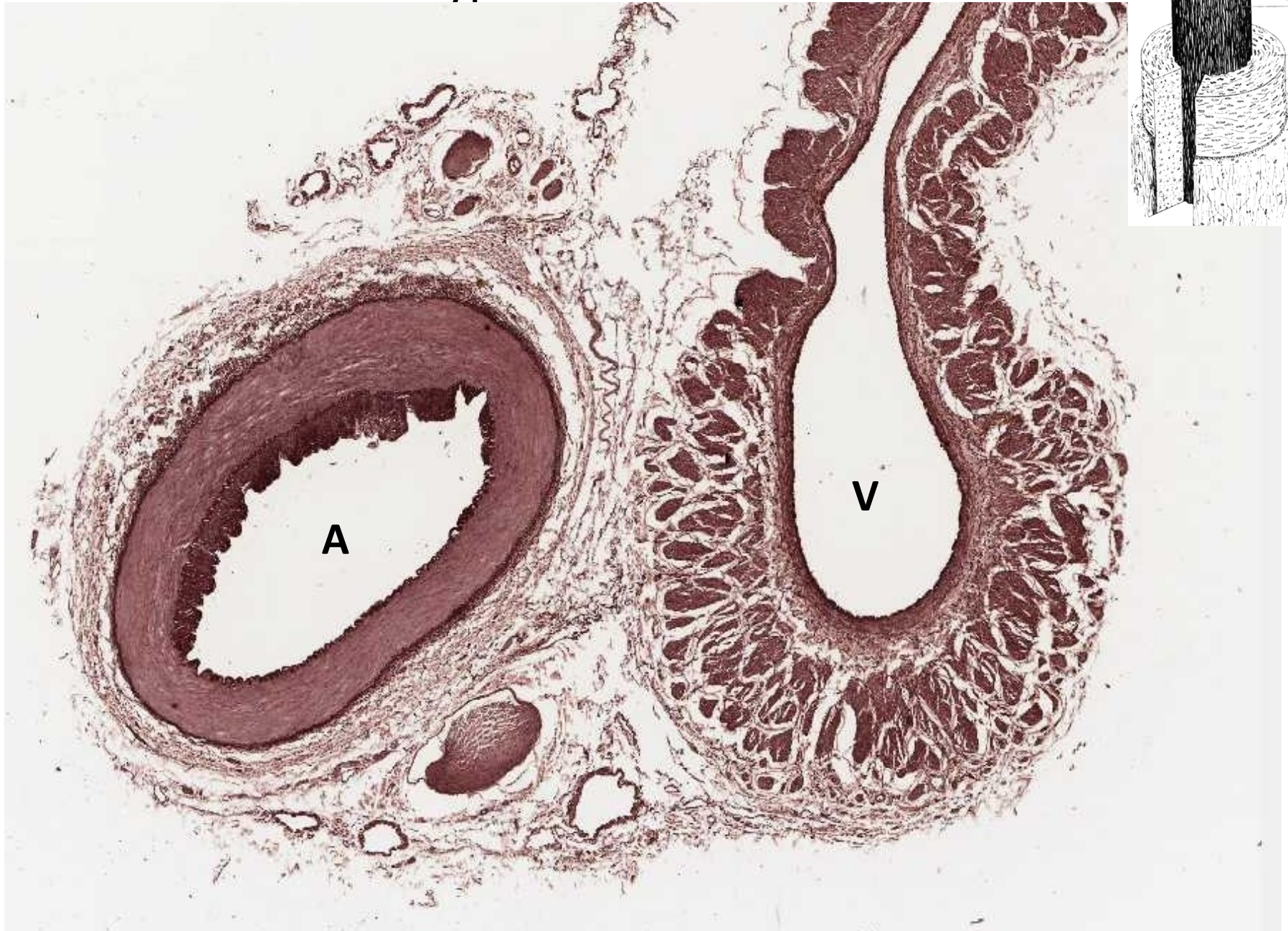
arteriola a venula



arterie svalového typu s vénou - HE



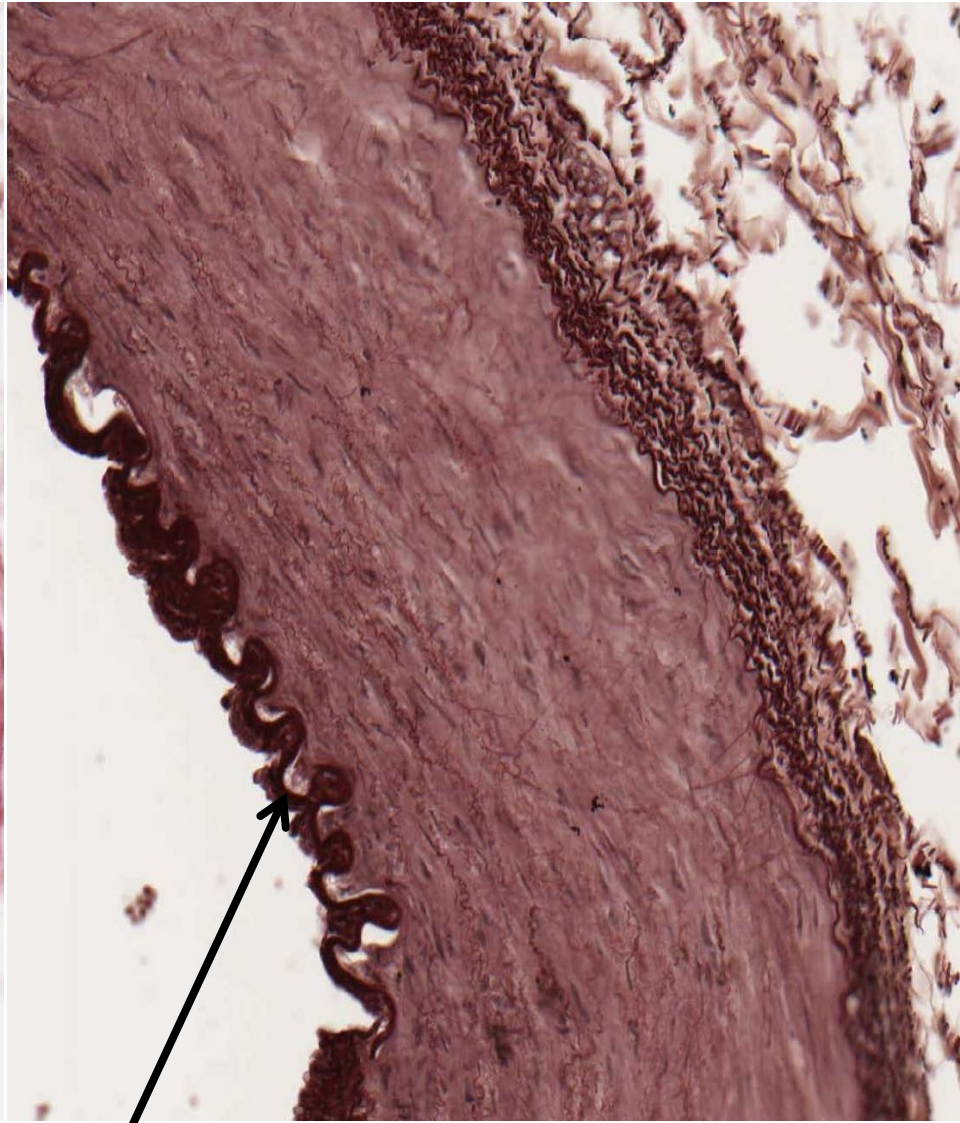
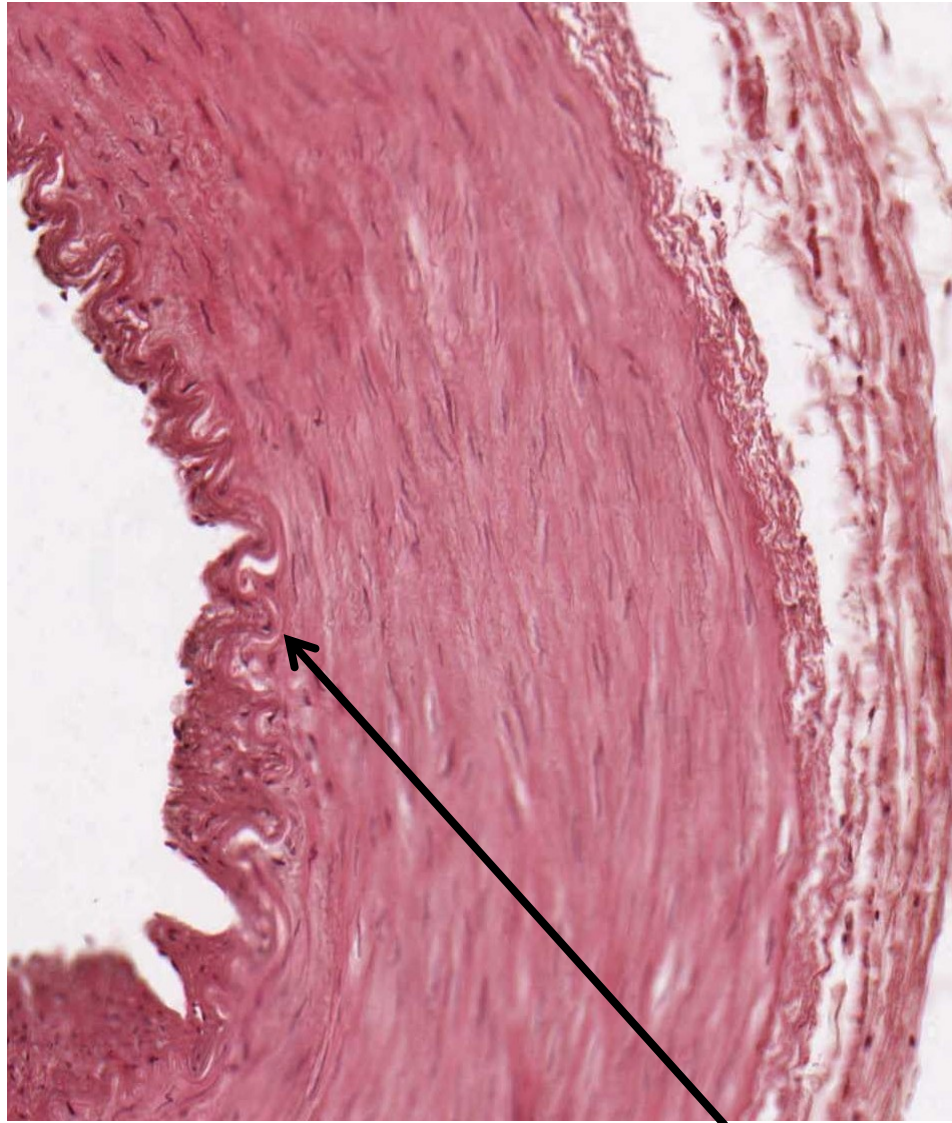
arterie svalového typu s vénou - orcein



arterie svalového typu

HE

orcein

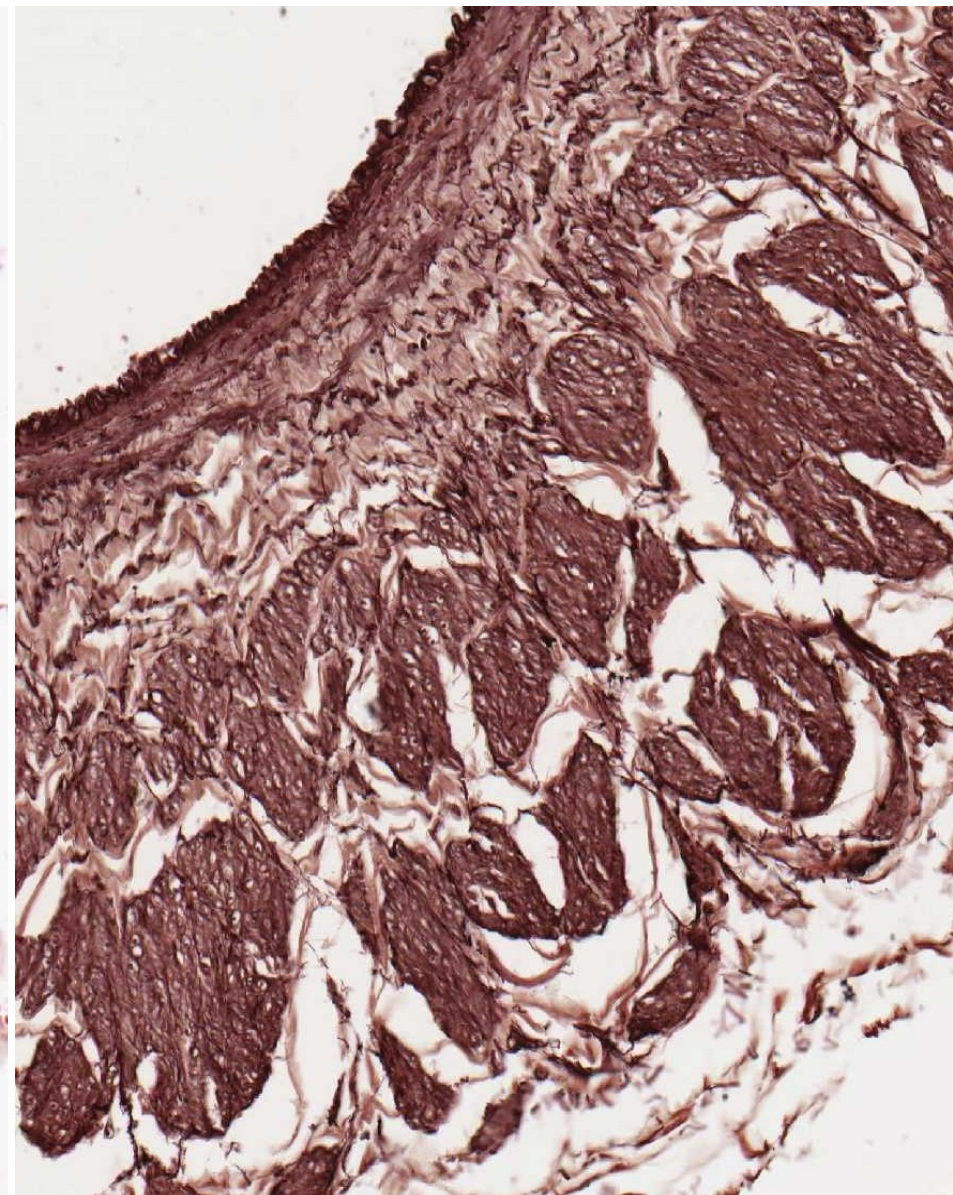
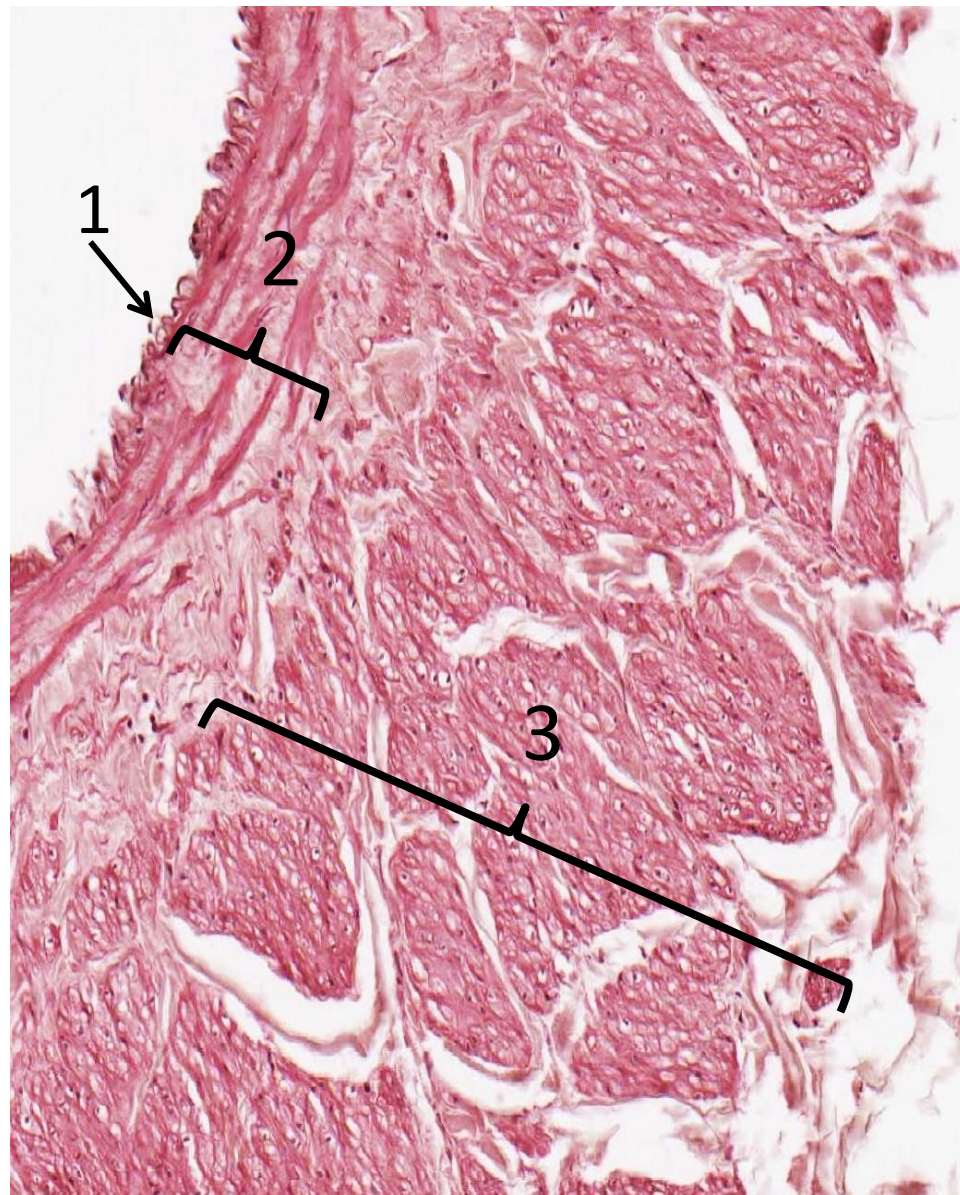


membrana elastica interna

véna středního kalibru (1-intima, 2-medie, 3-adventicie)

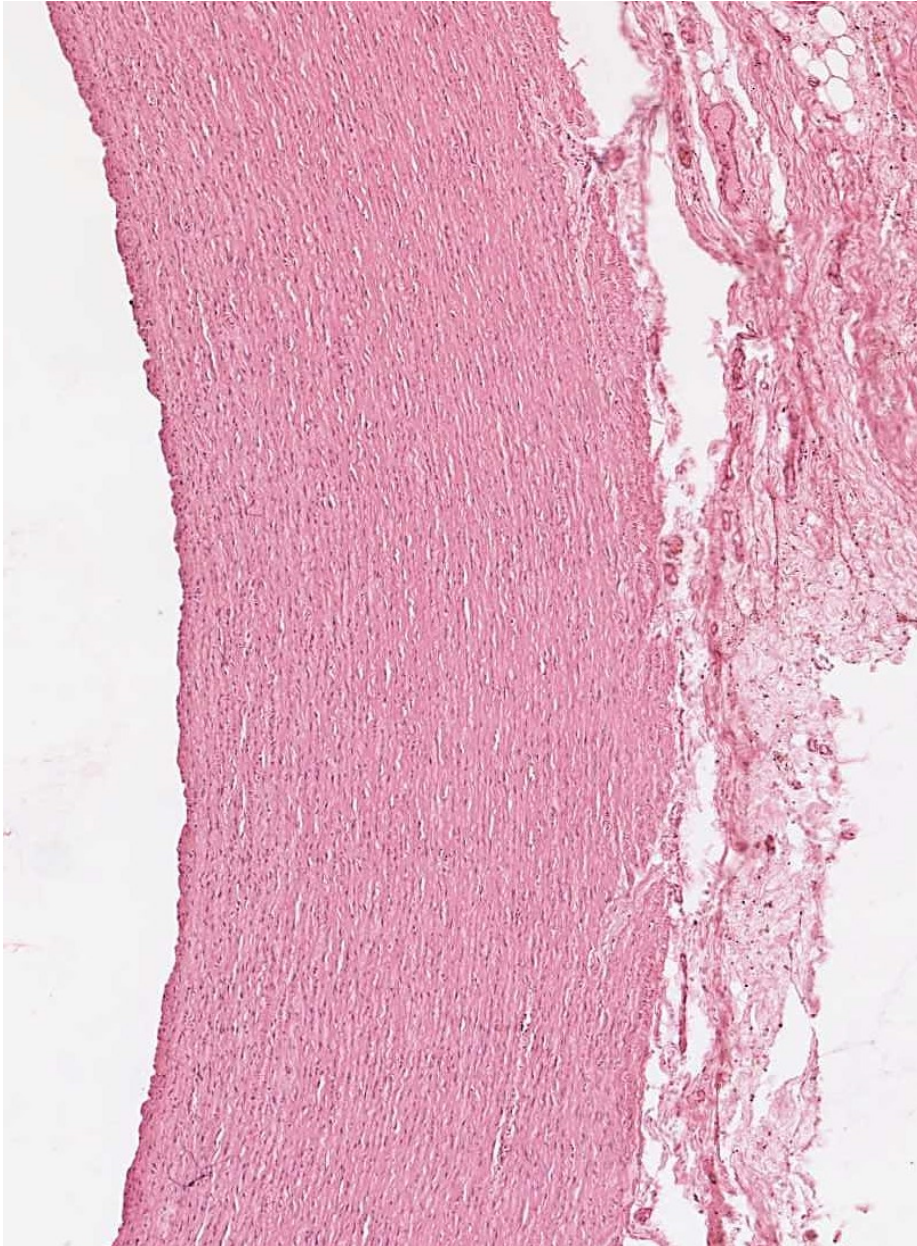
HE

orcein

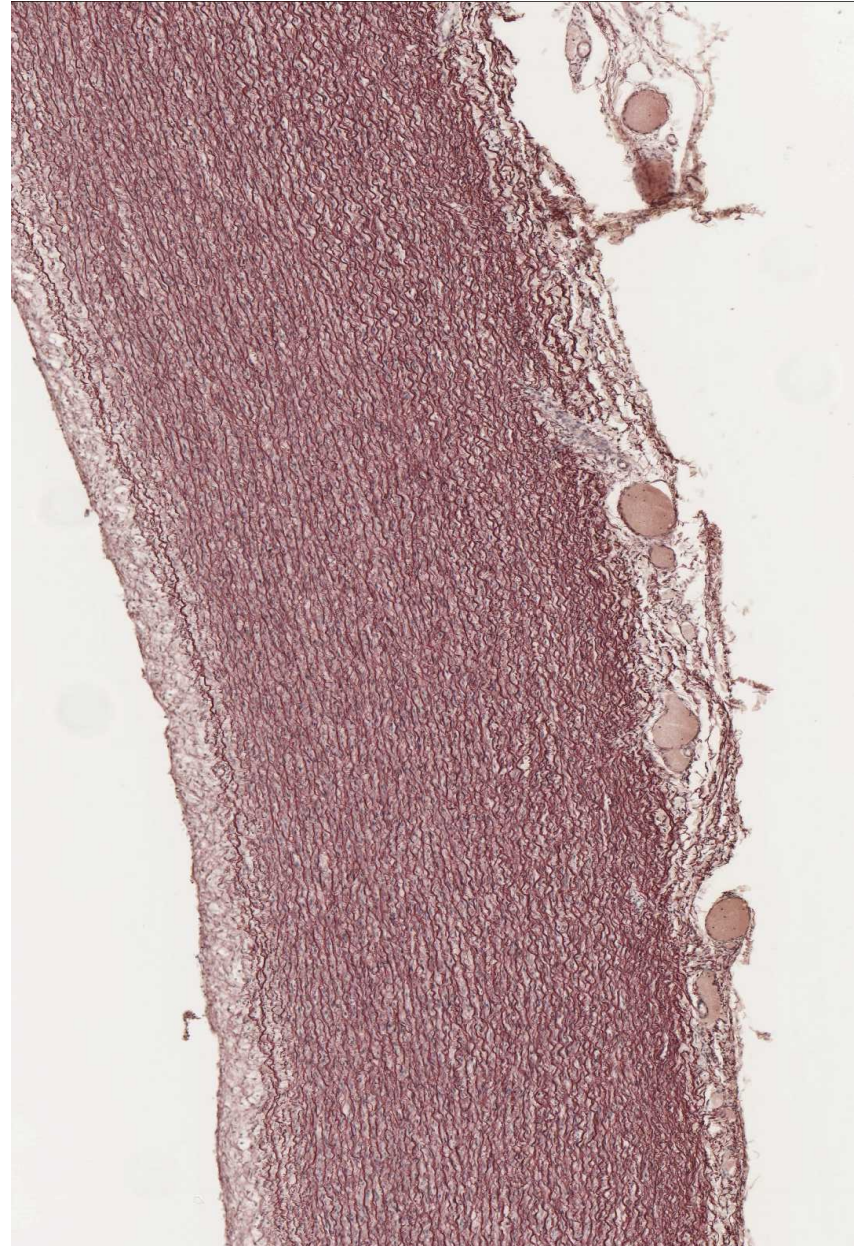


aorta

HE

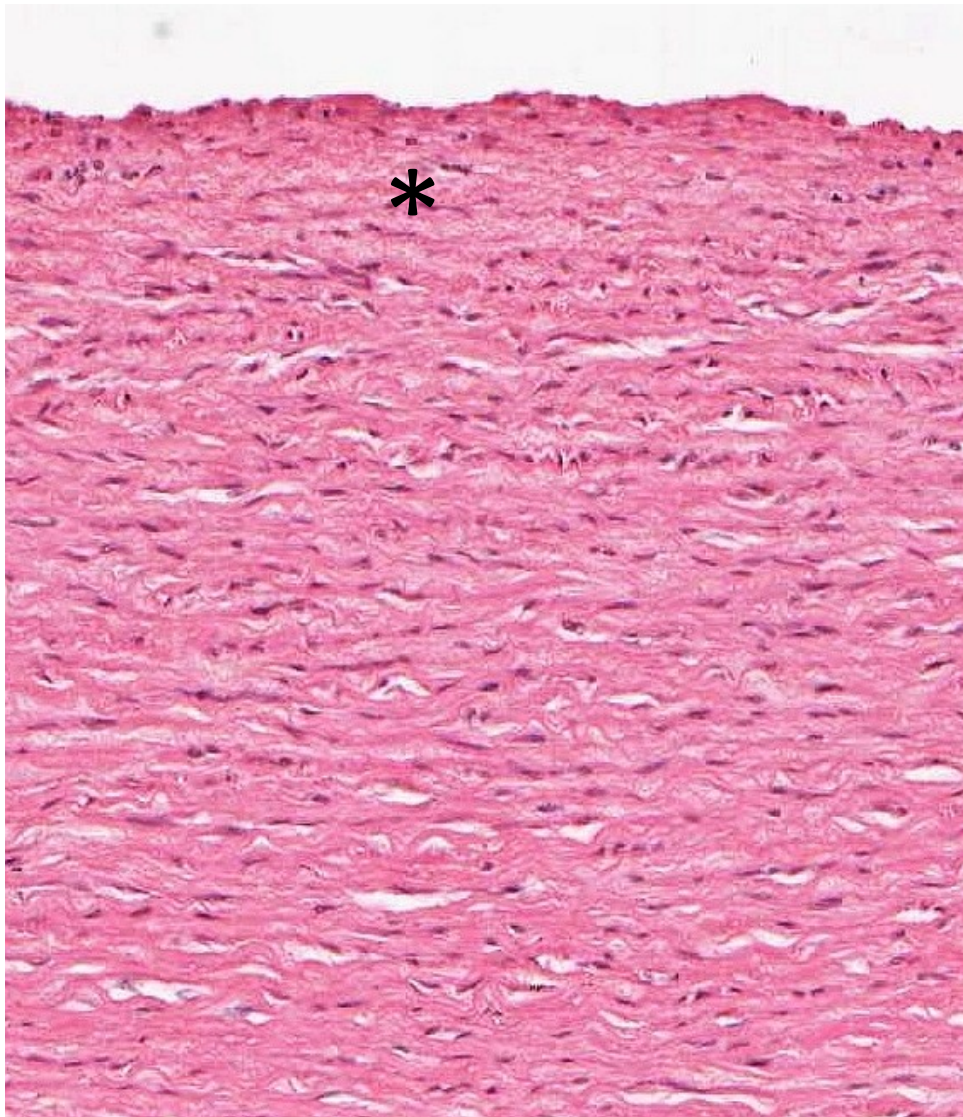


orcein

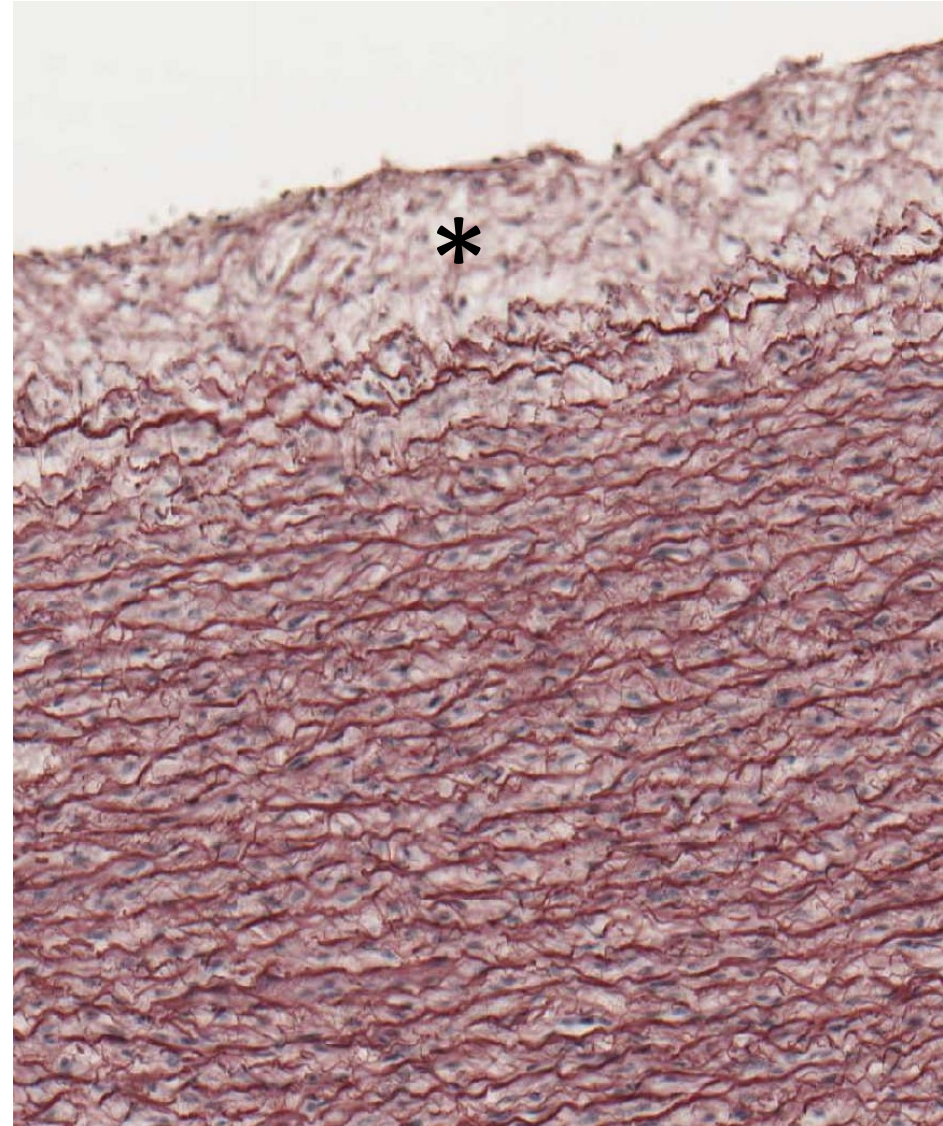


aorta – intima *

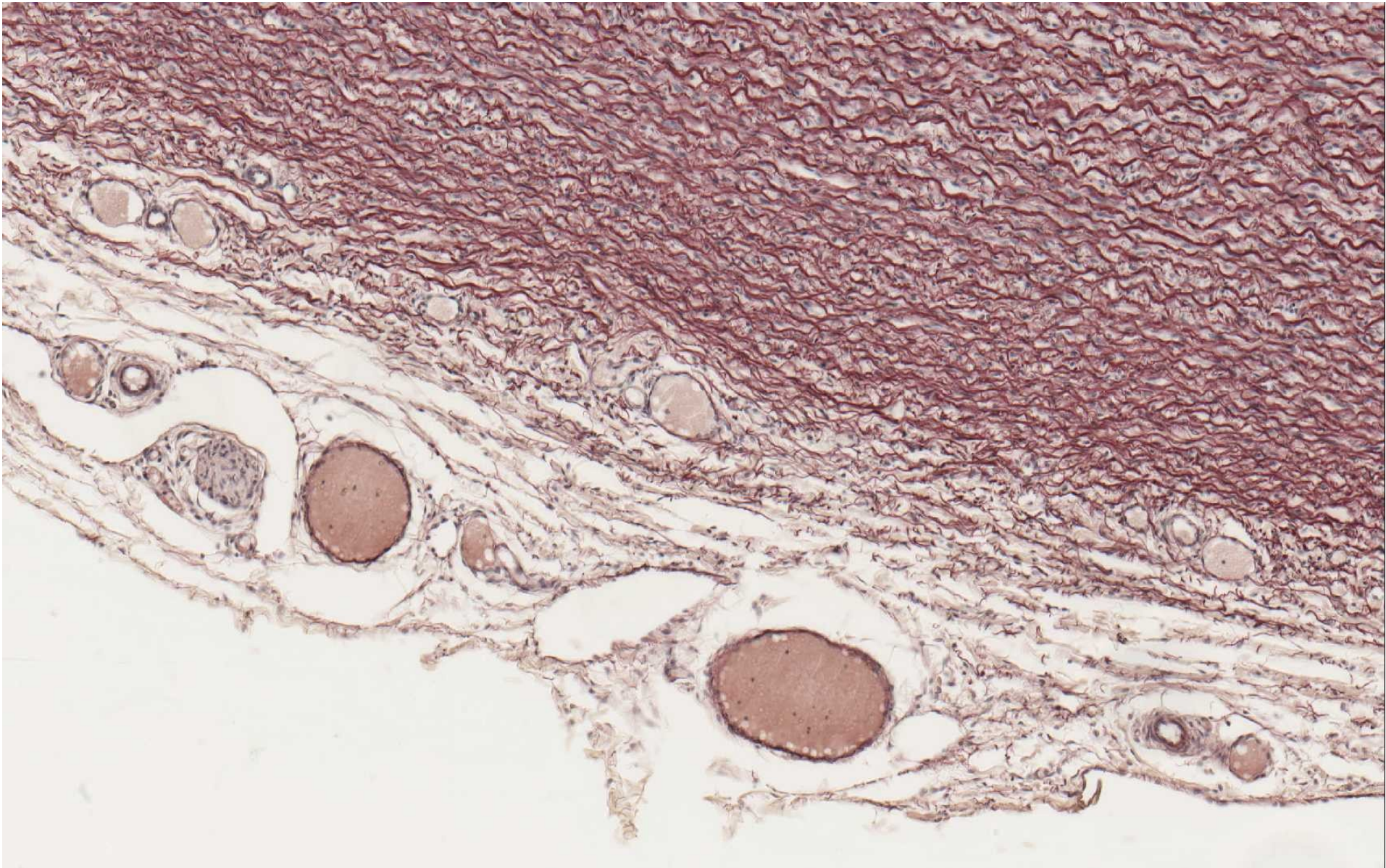
HE



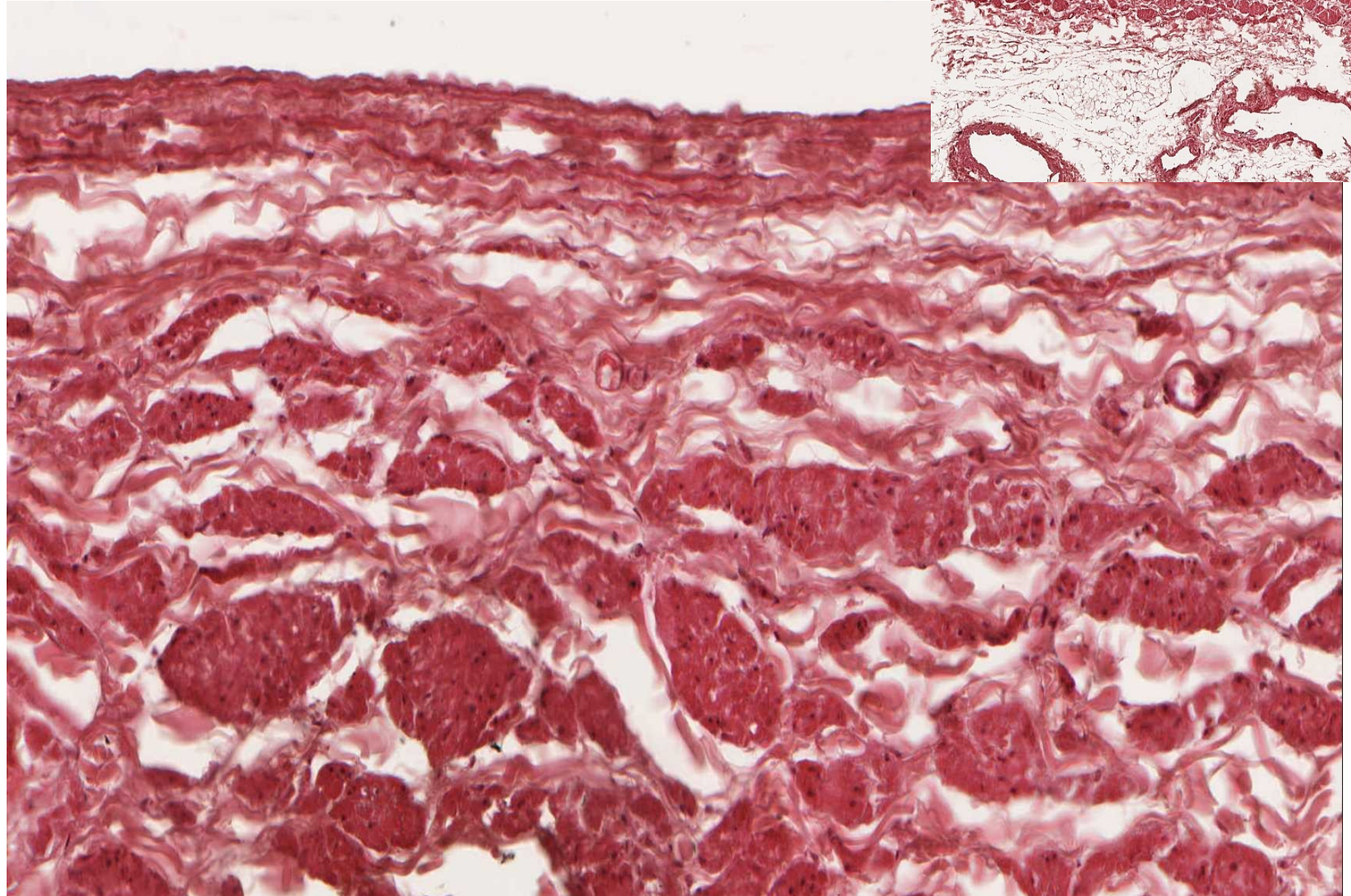
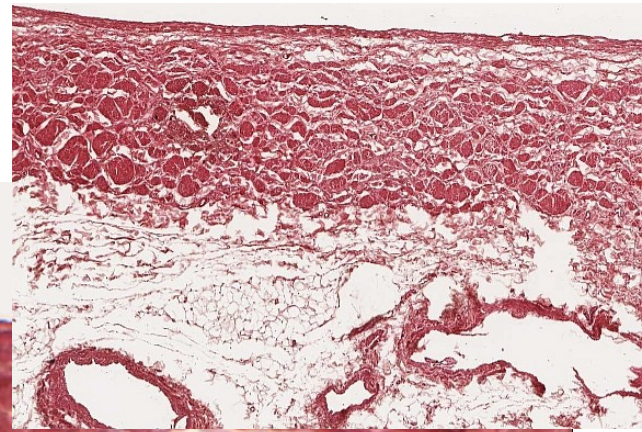
orcein



aorta (orcein) – adventicie, vasa vasorum, nervi vasorum

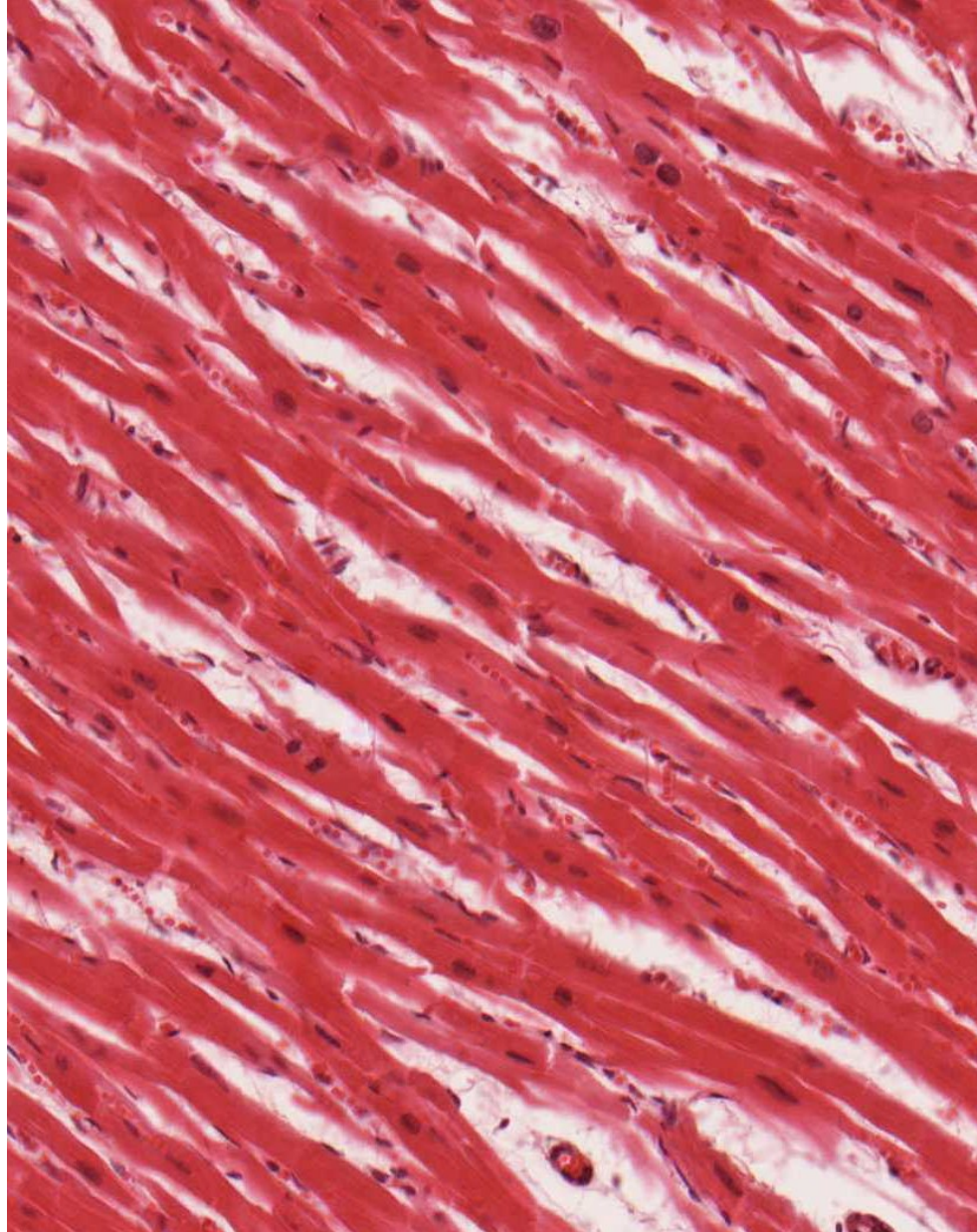


vena cava (HE)

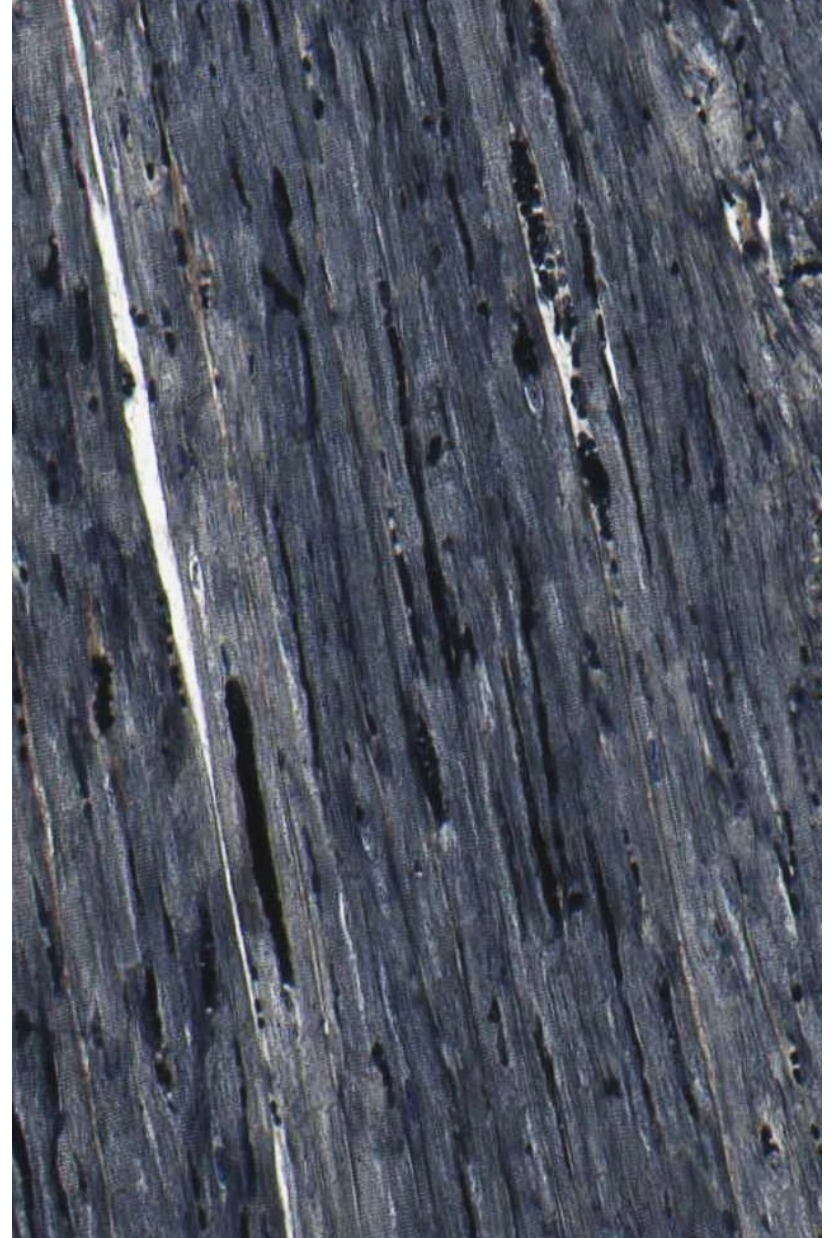


myokard

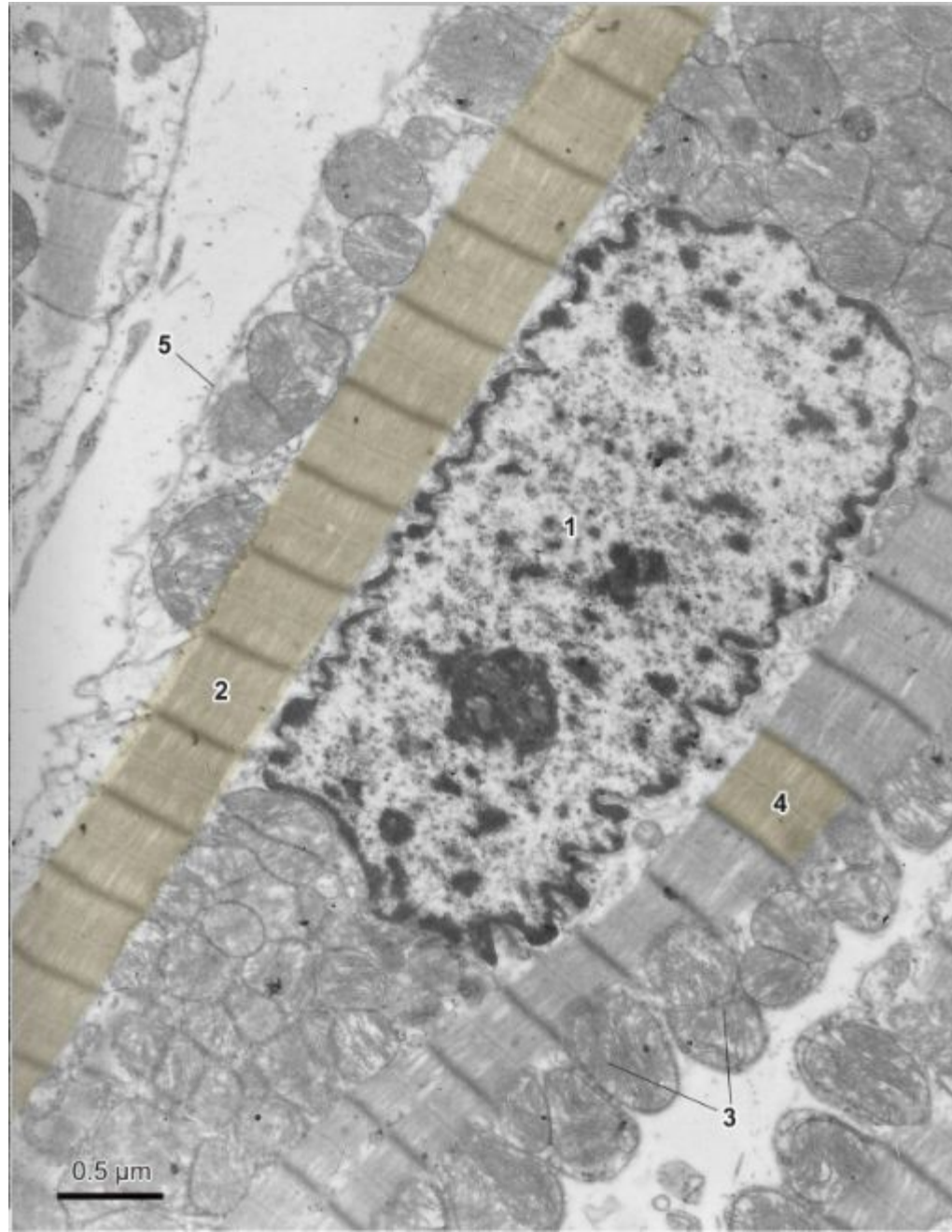
HE



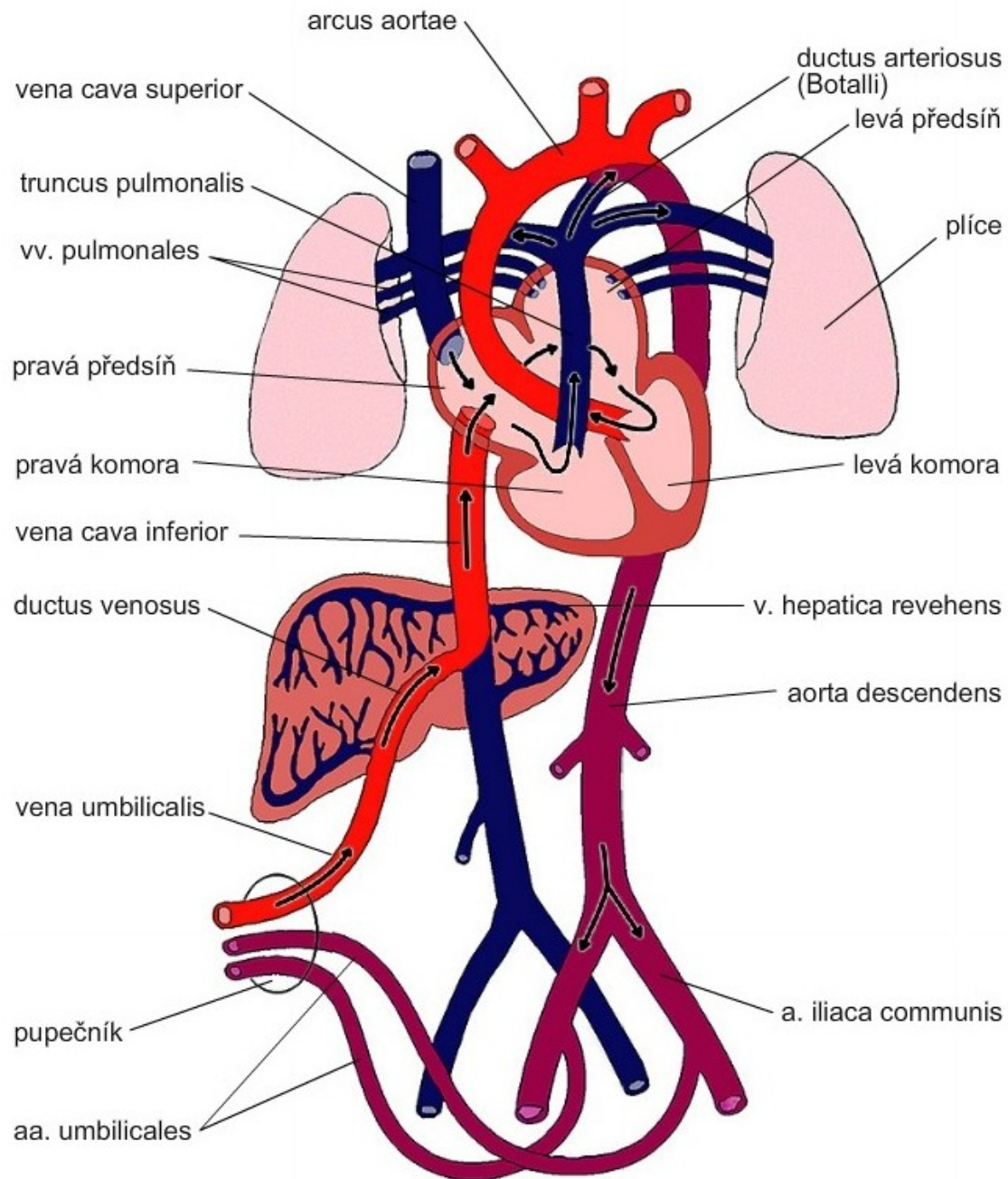
Heidenhain



kardiomyocyt (TEM)



fetální krevní oběh





KARDIOVASKULÁRNÍ SYSTÉM

Preparáty

Arterie svalového typu s vénou (59 – HE, 60 - orcein)

Aorta (61 – HE, 62 - orcein)

Vena cava (63 - HE)

Myokard (64 – HE, 65 - Heidenhain)

Atlas EM:

Arteriola (59)

Kapilára se souvislou výstelkou (55)

Kapilára fenestrovaná (56, 57)

Sinusoidní kapiláry (58)

Kardiomyocyt (44-46)

Vývoj srdce, embryonální a fetální krevní oběh (91-93)