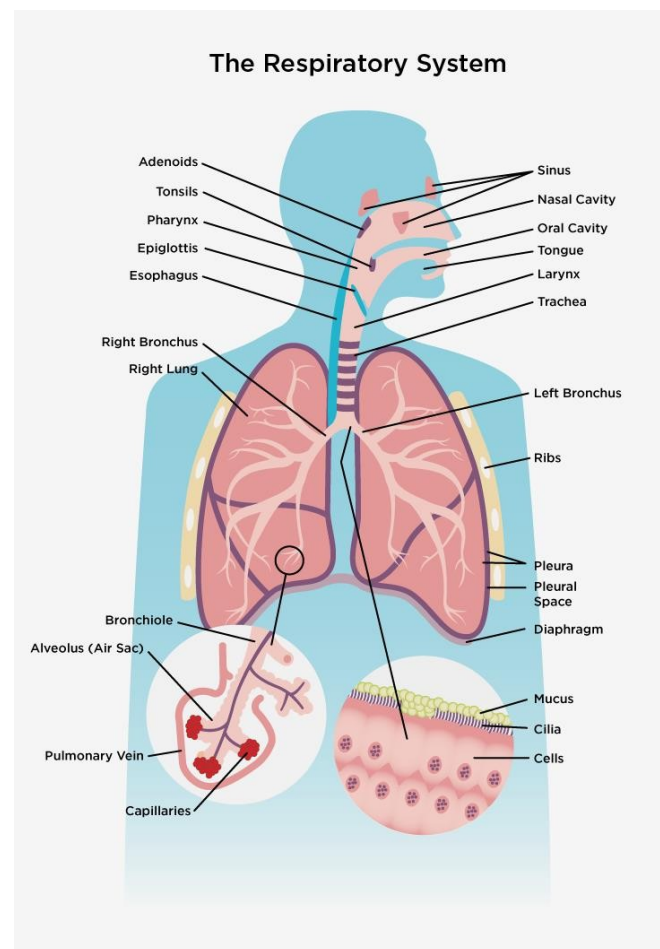




# DÝCHACÍ SYSTÉM

- Dýchací cesty
- Dutina nosní (concha nasi)
- Pharynx
- Larynx
- Trachea
- Bronchy
- Plíce



# Concha nasi

sliznice (tunica mucosa)

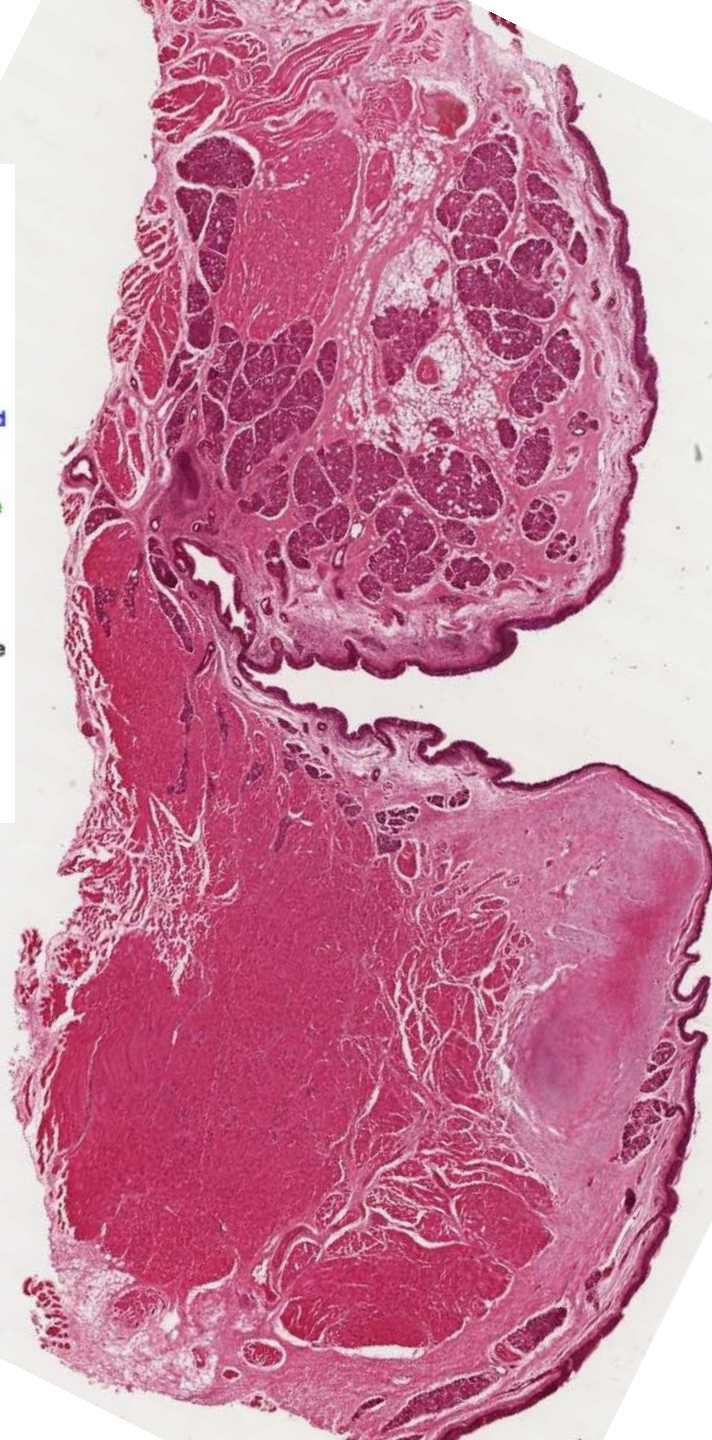
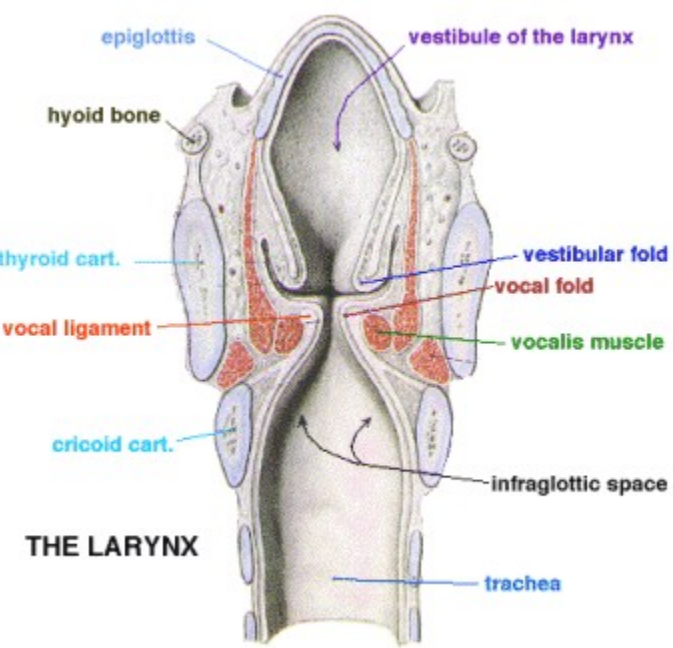






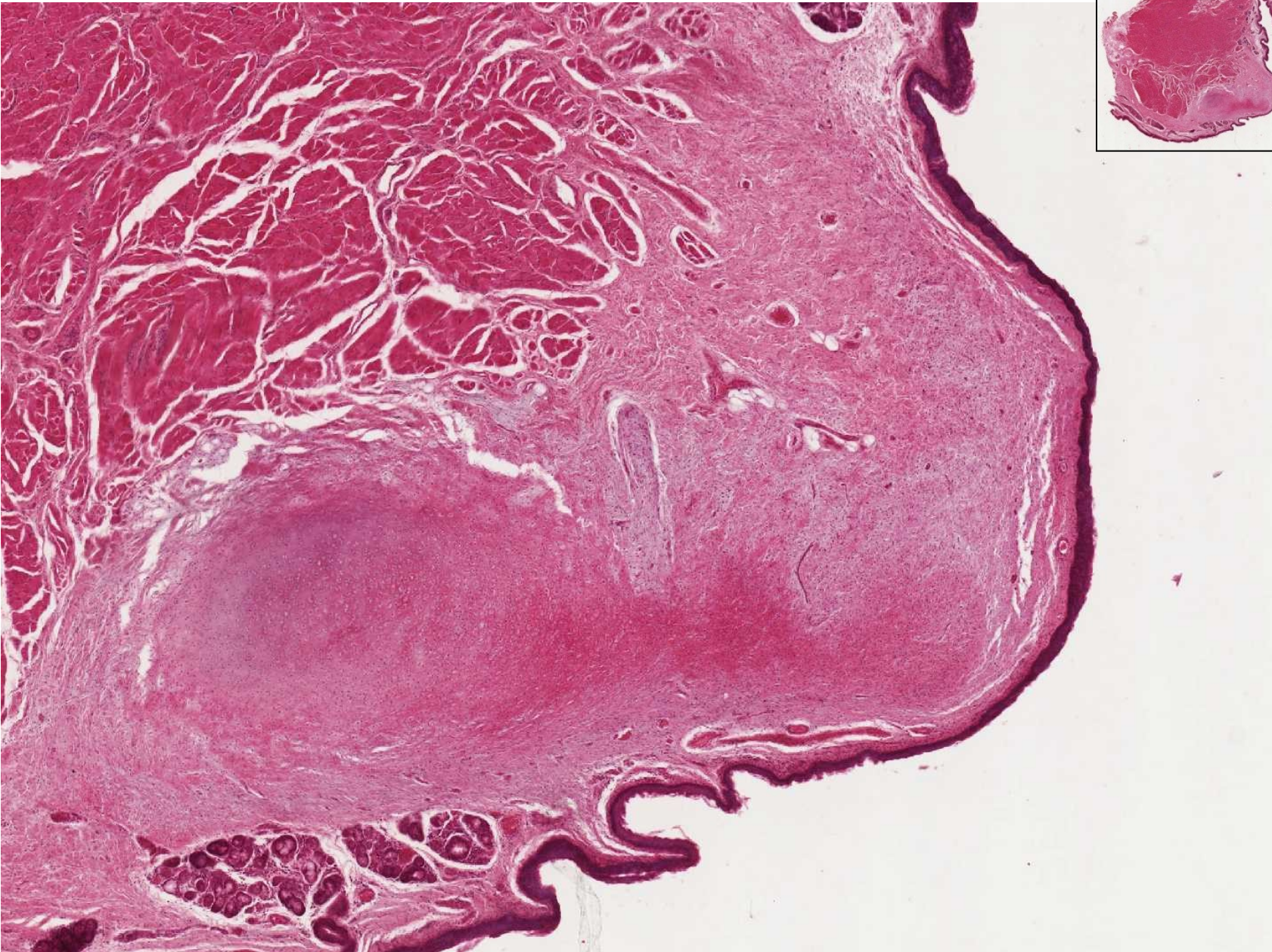


# Larynx



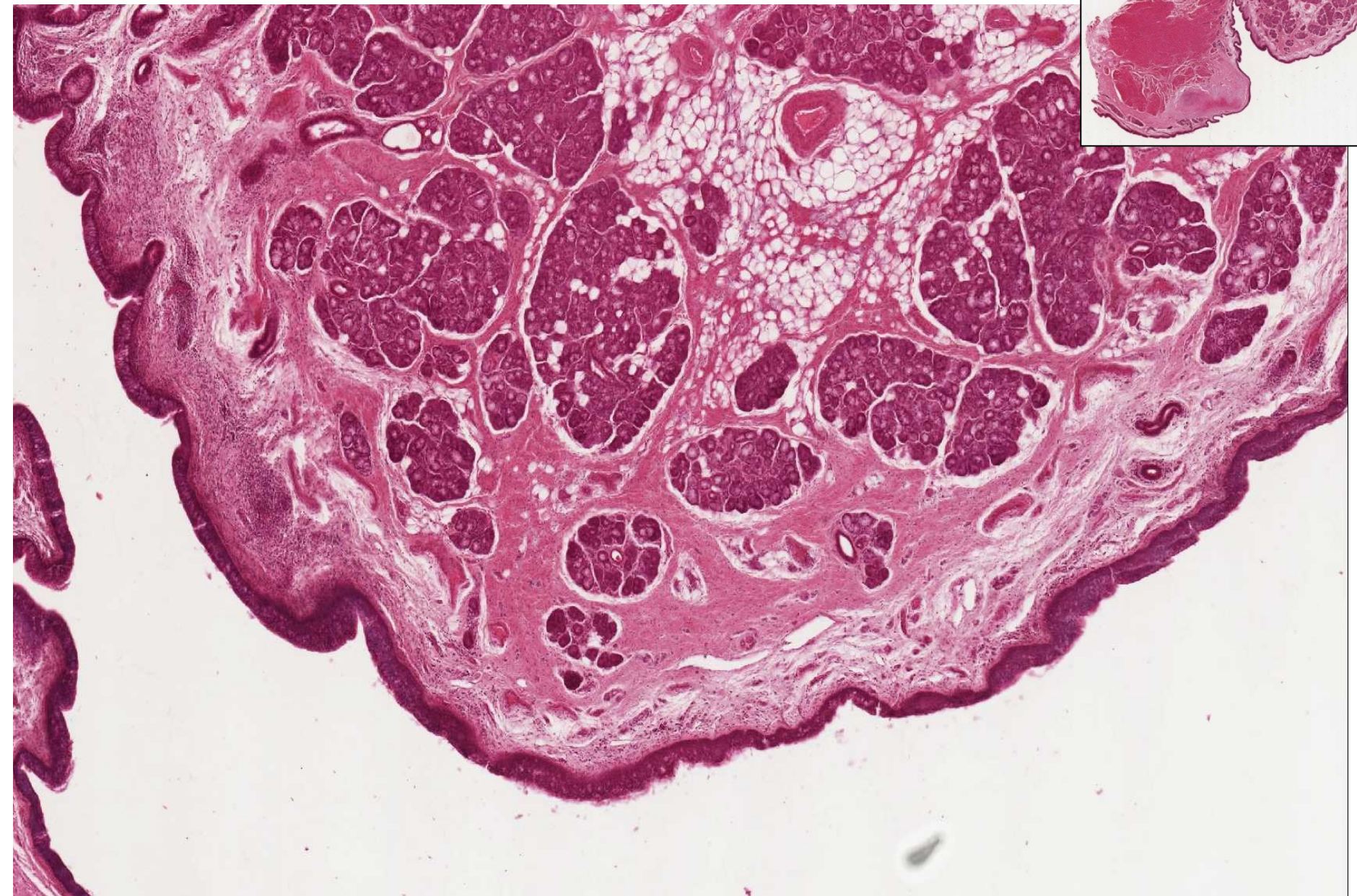


# Larynx – plica vocalis



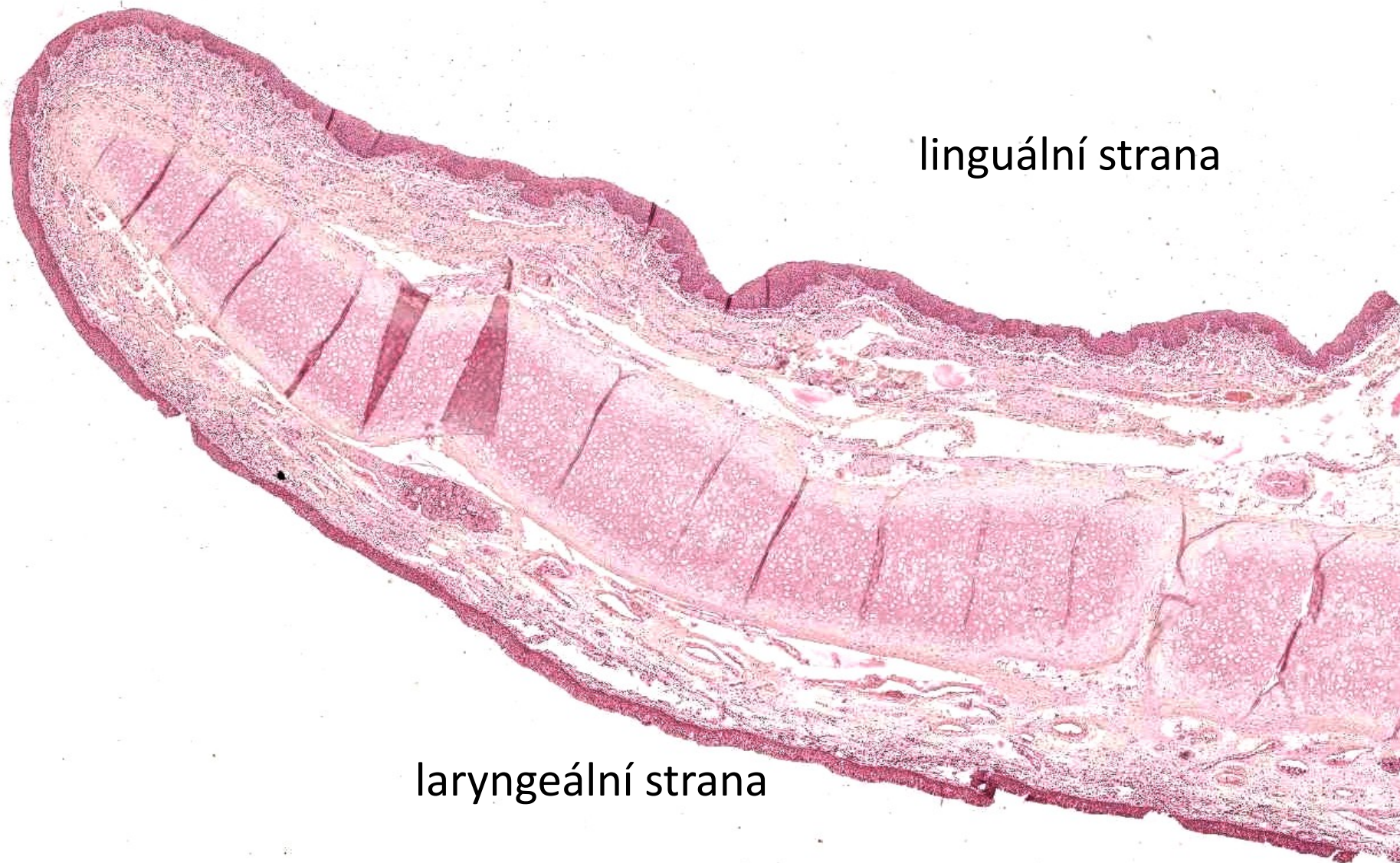


# Larynx – plica ventricularis





# Epiglottis



linguální strana

laryngeální strana

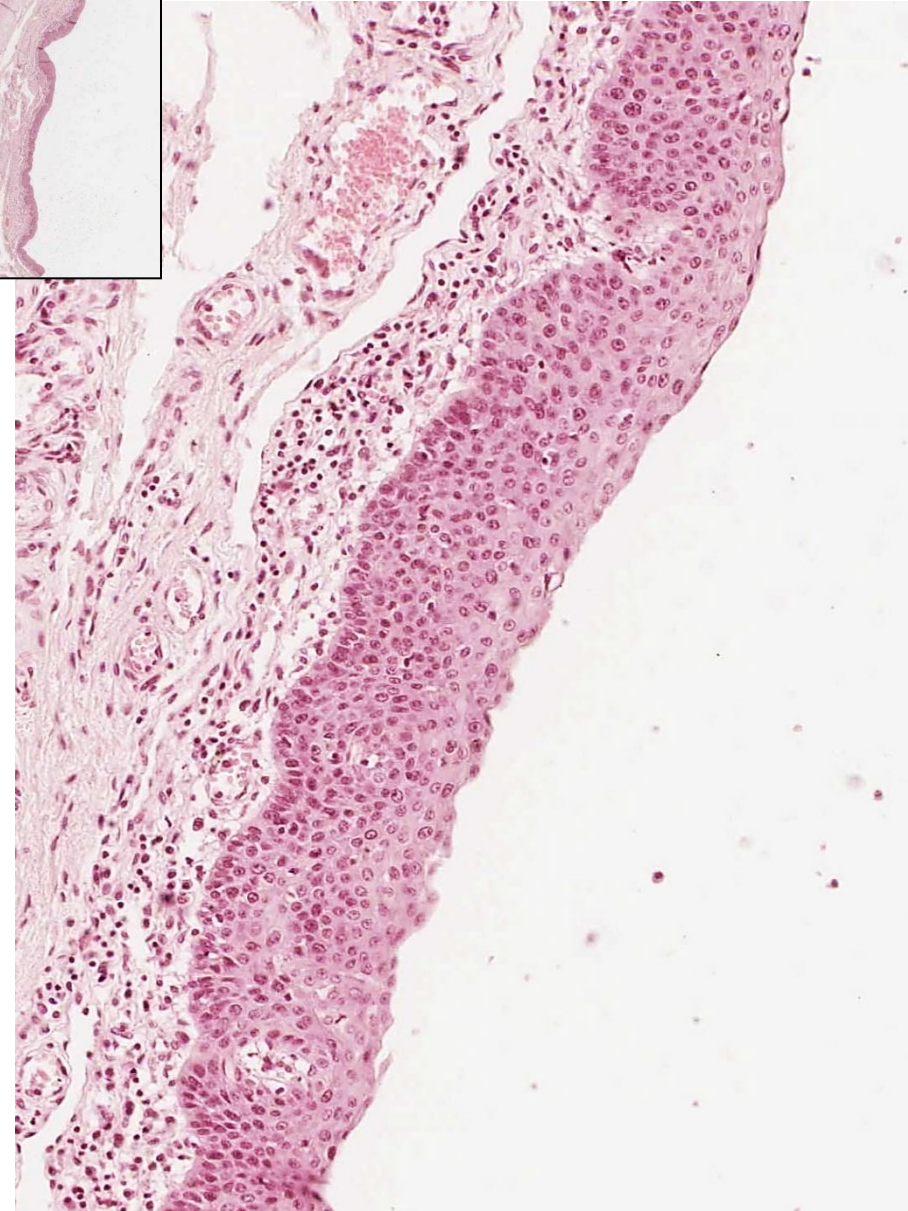
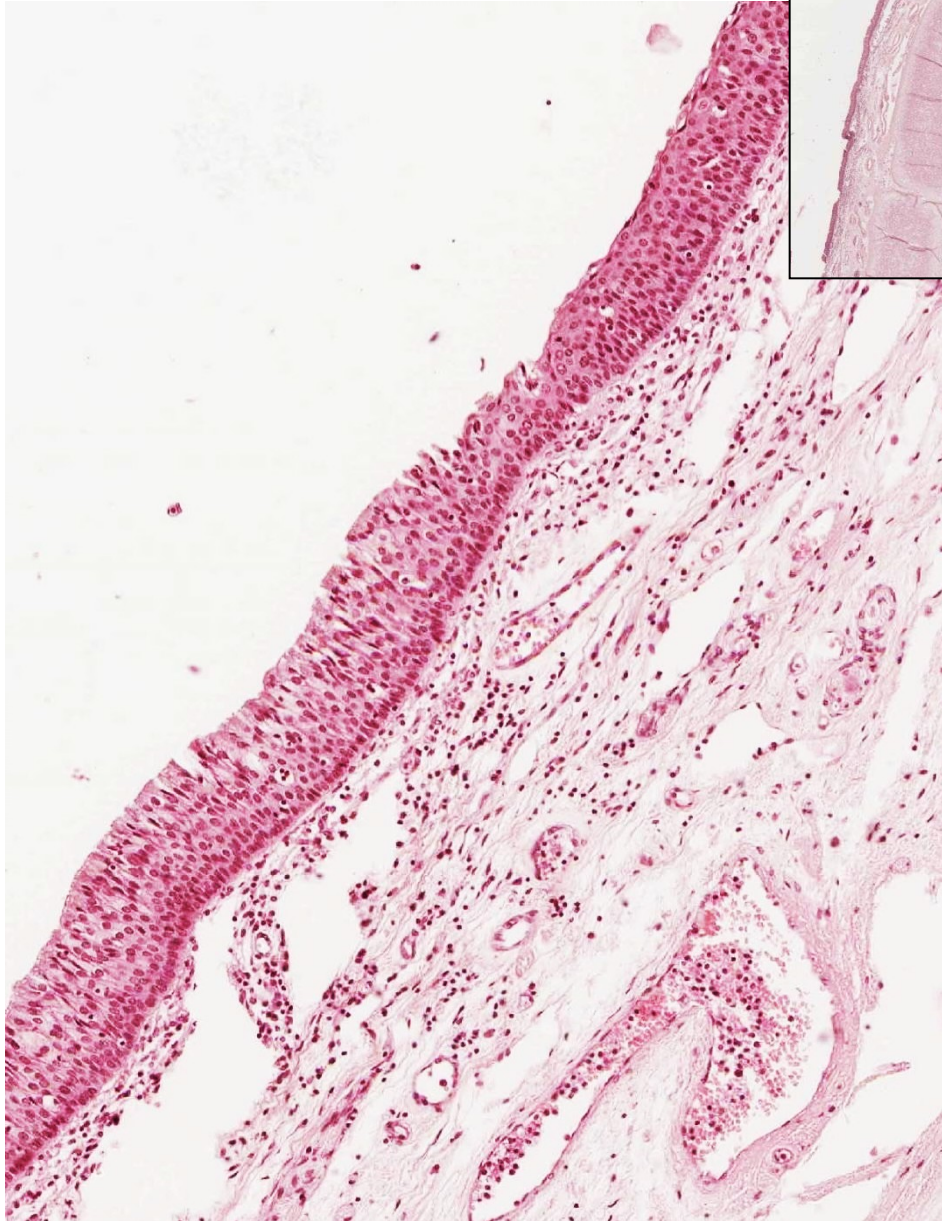


# Epiglottis

laryngeální strana



linguální strana

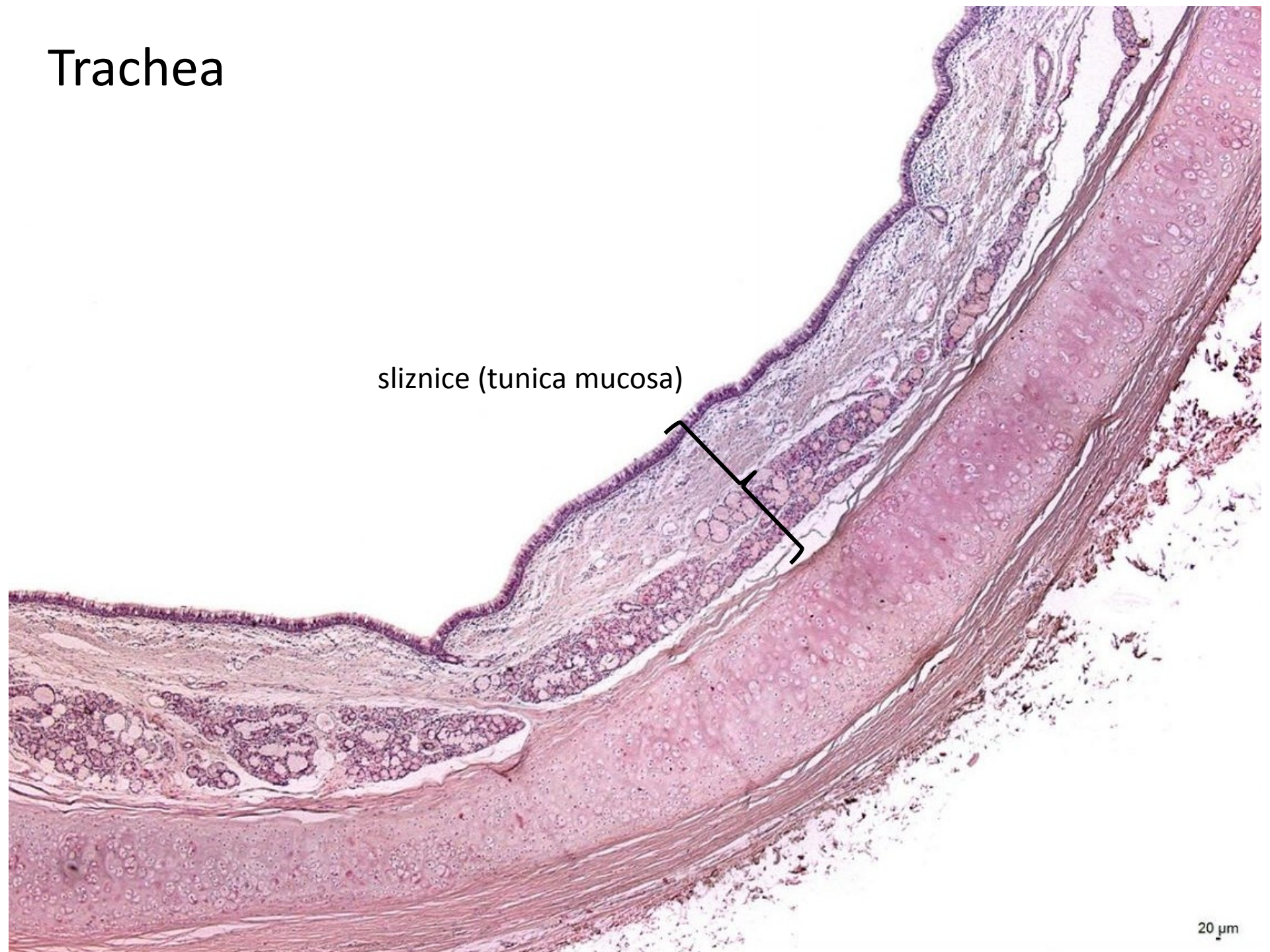




# Trachea

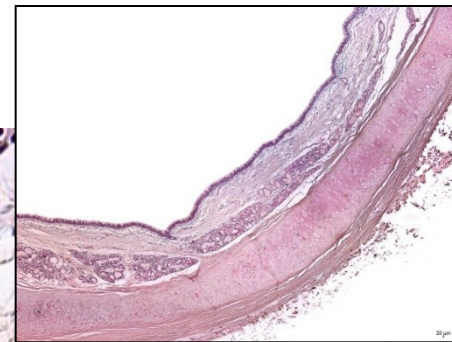
sliznice (tunica mucosa)

20  $\mu$ m





# Trachea - sliznice

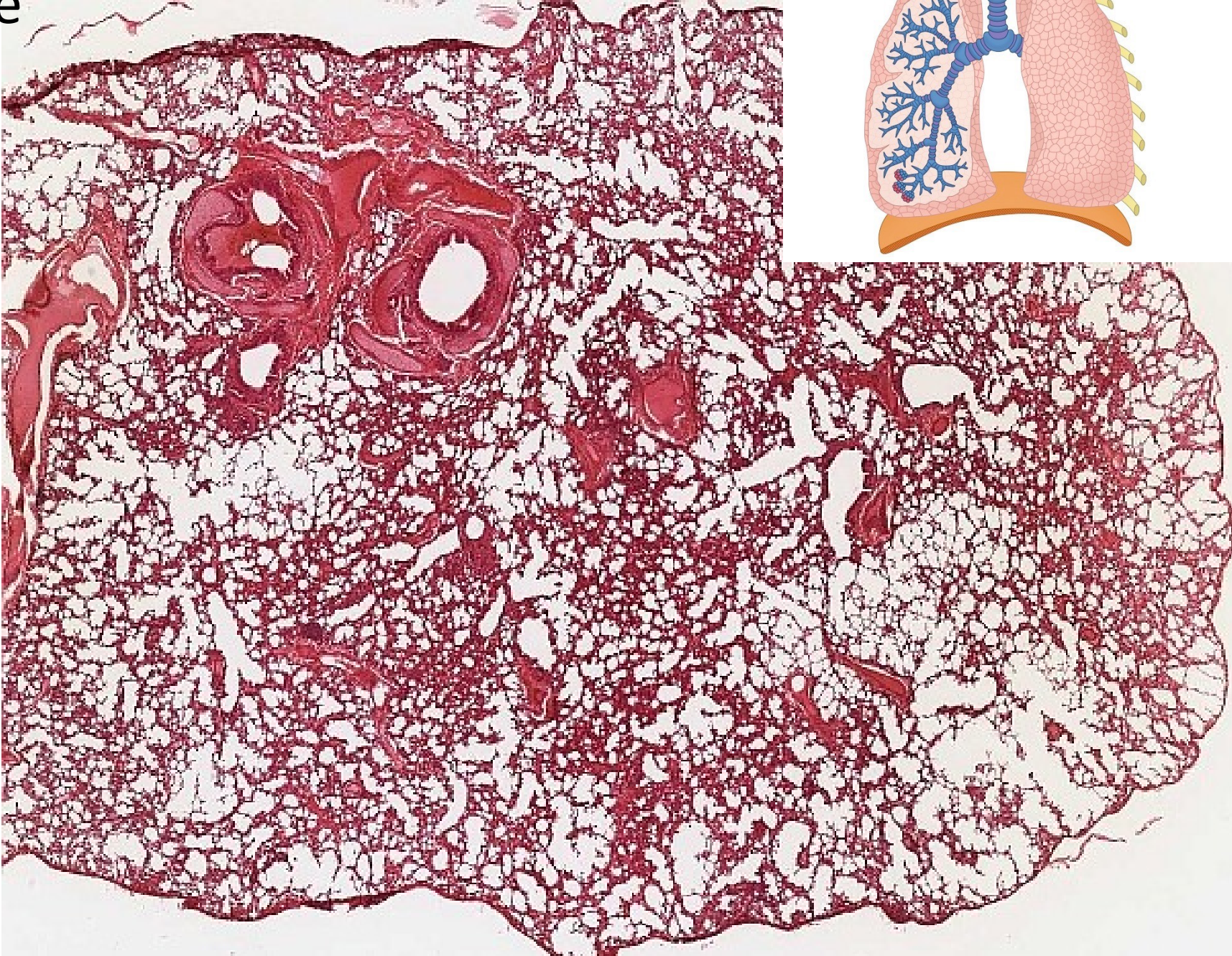


smíšené žlázy

20 μm

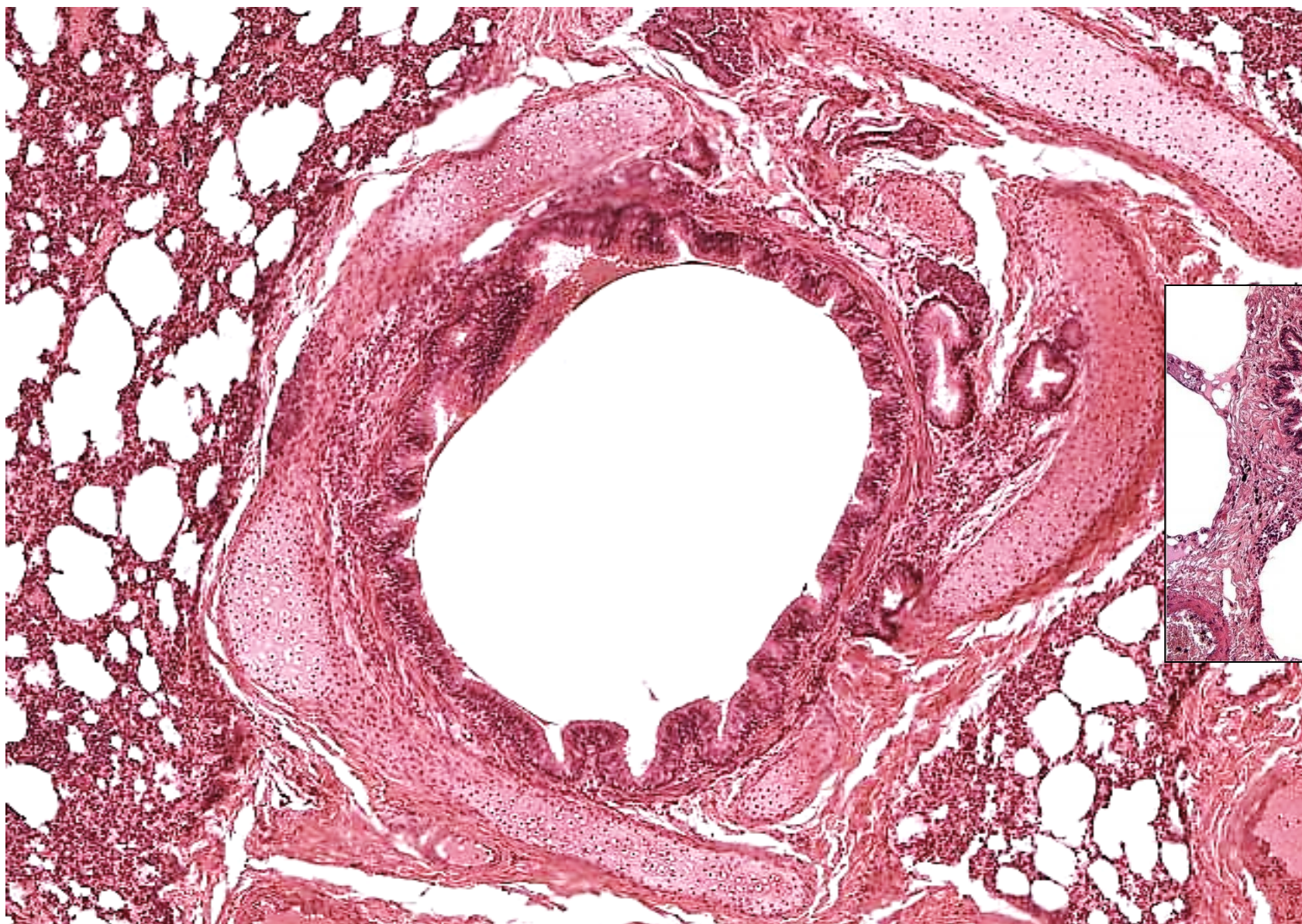


# Plíce



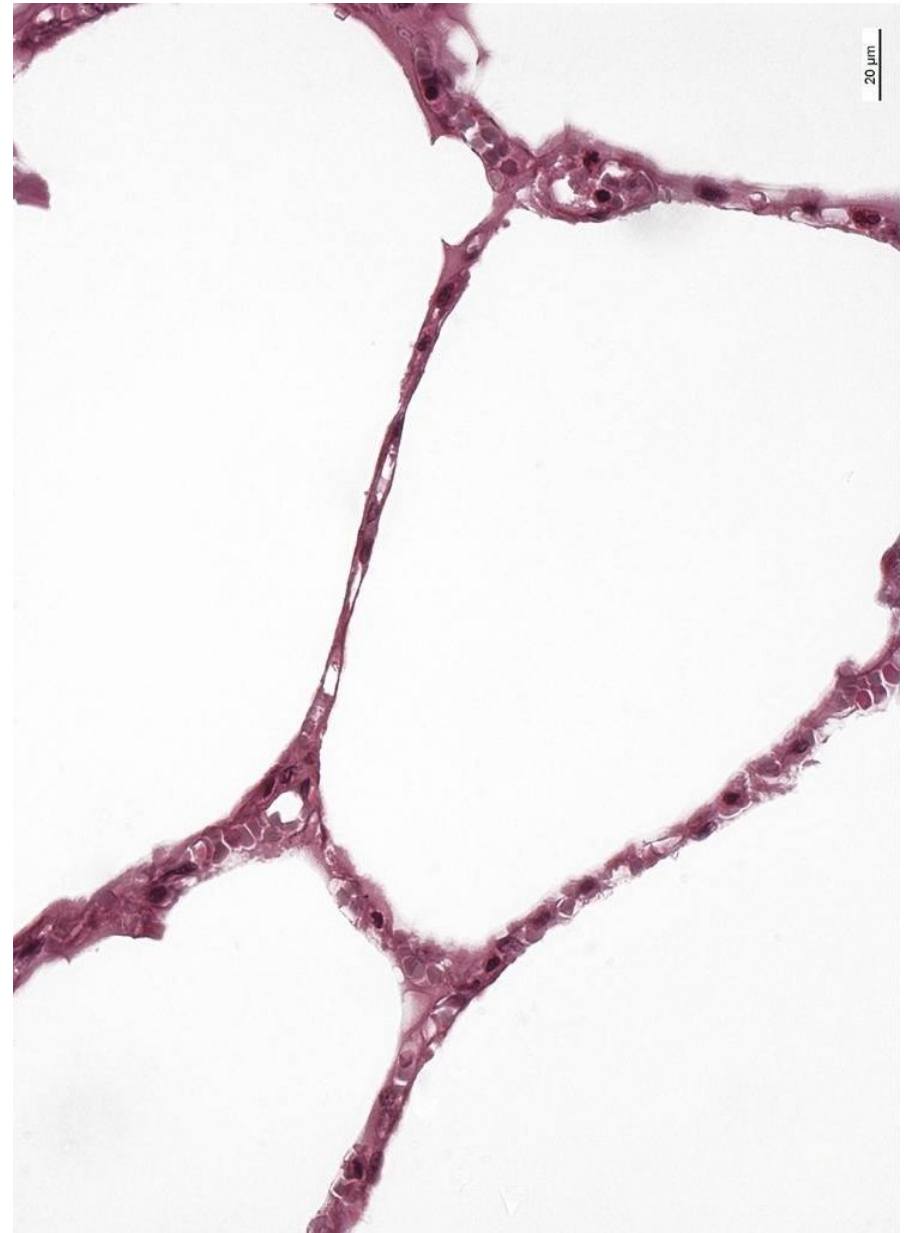


# Intrapulmonální bronchus / bronchiolus



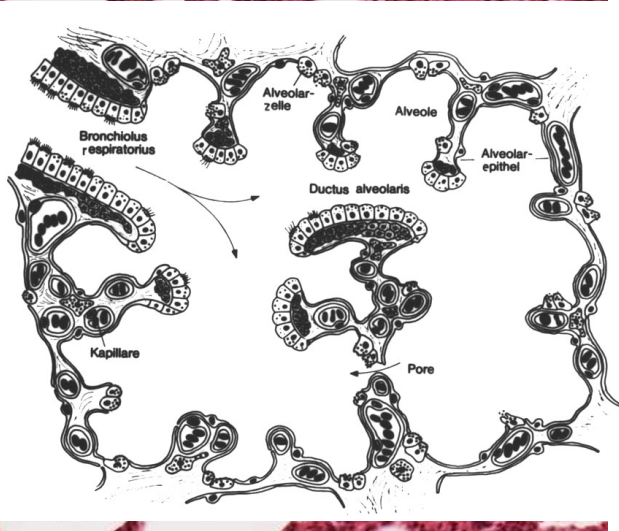
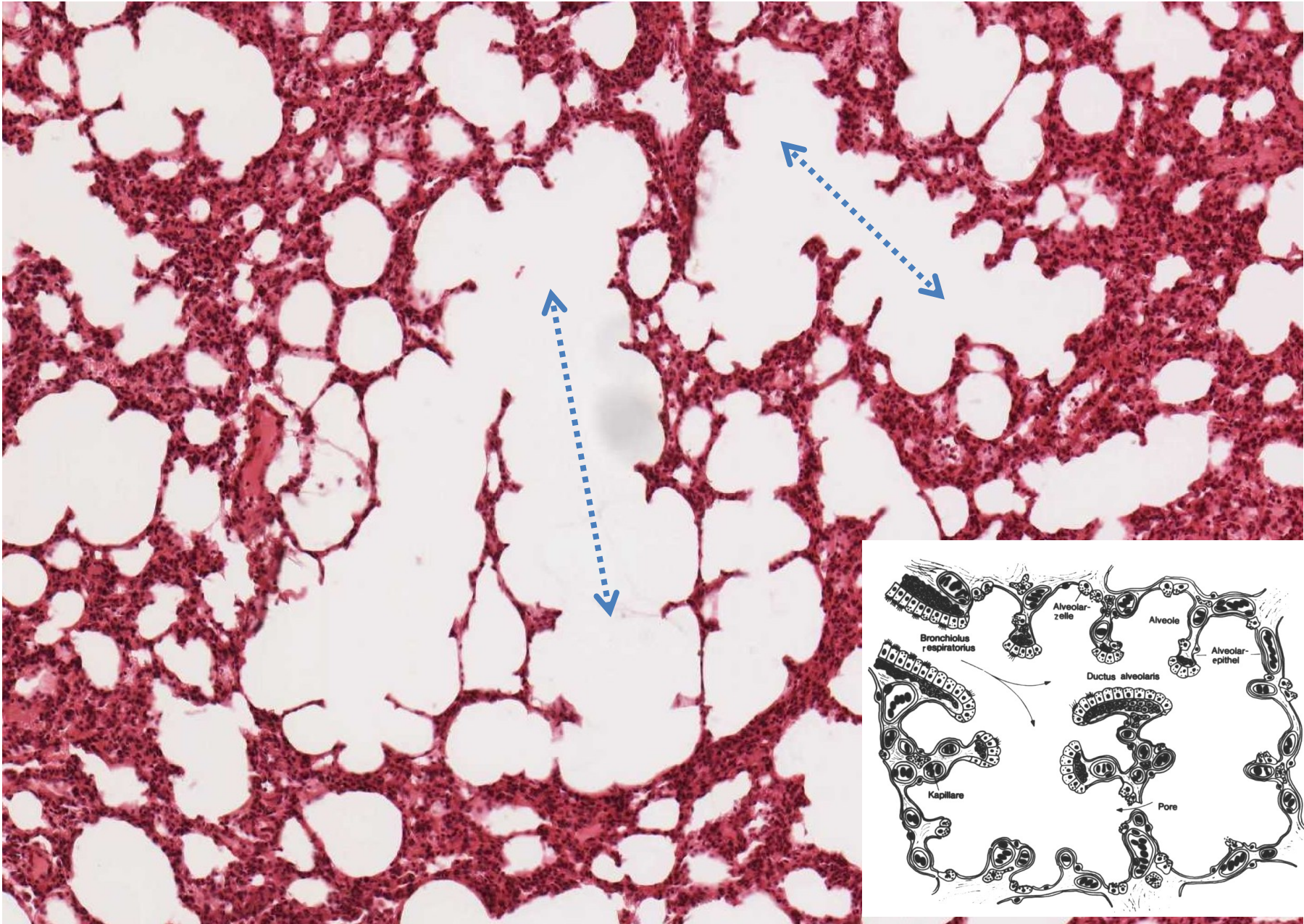


# Terminální bronchiolus / alveoly



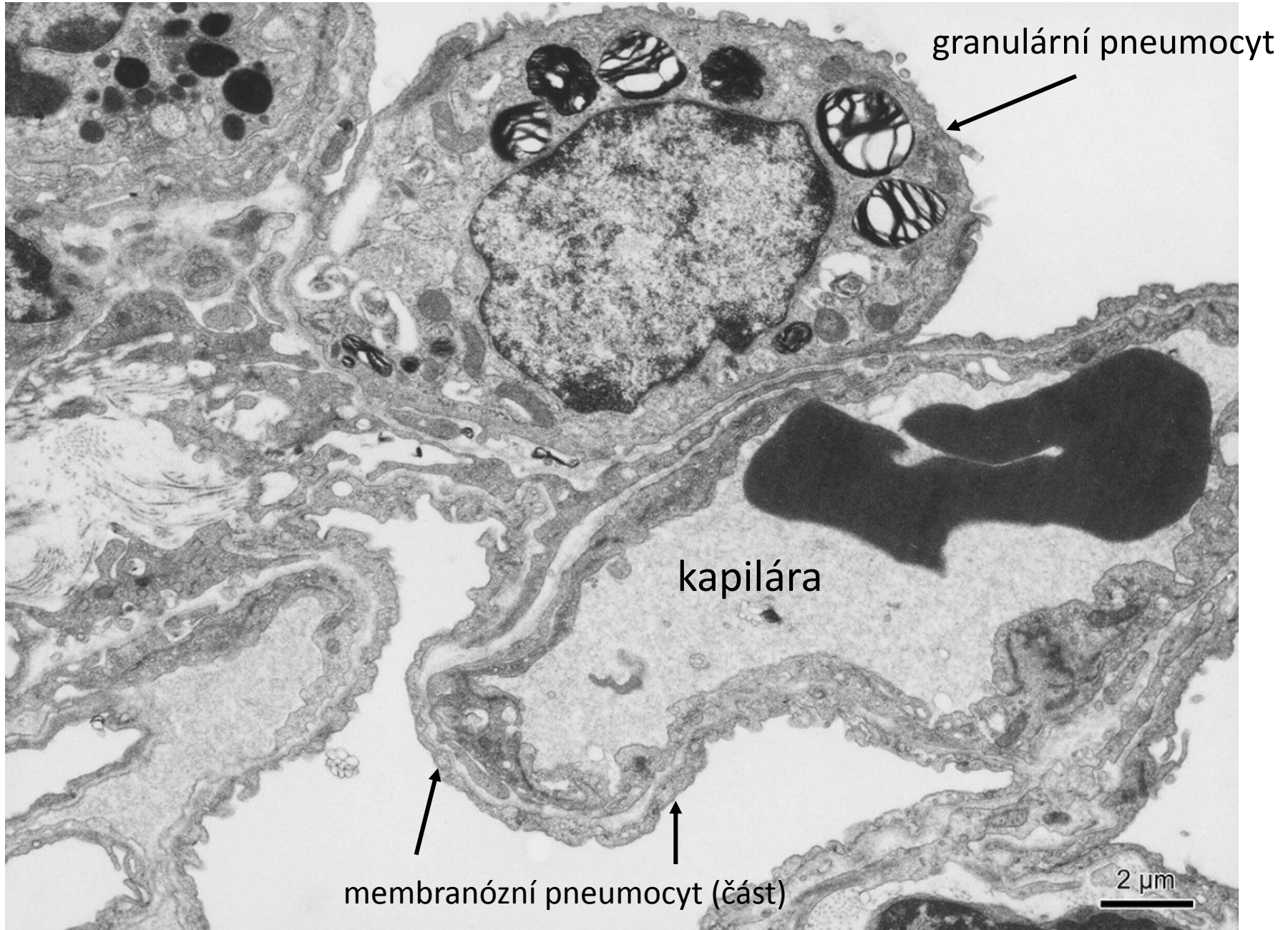


# Ductus alveolaris



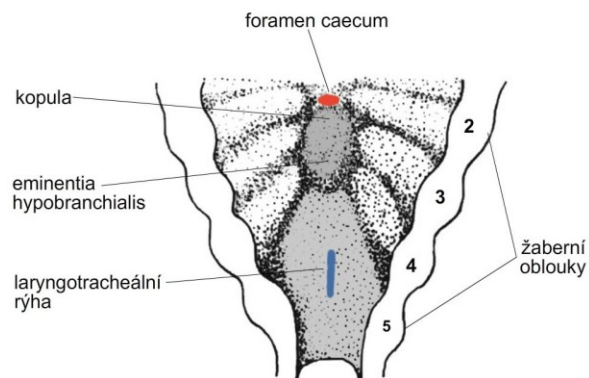


# Interalveolární septum, alveolární epitel

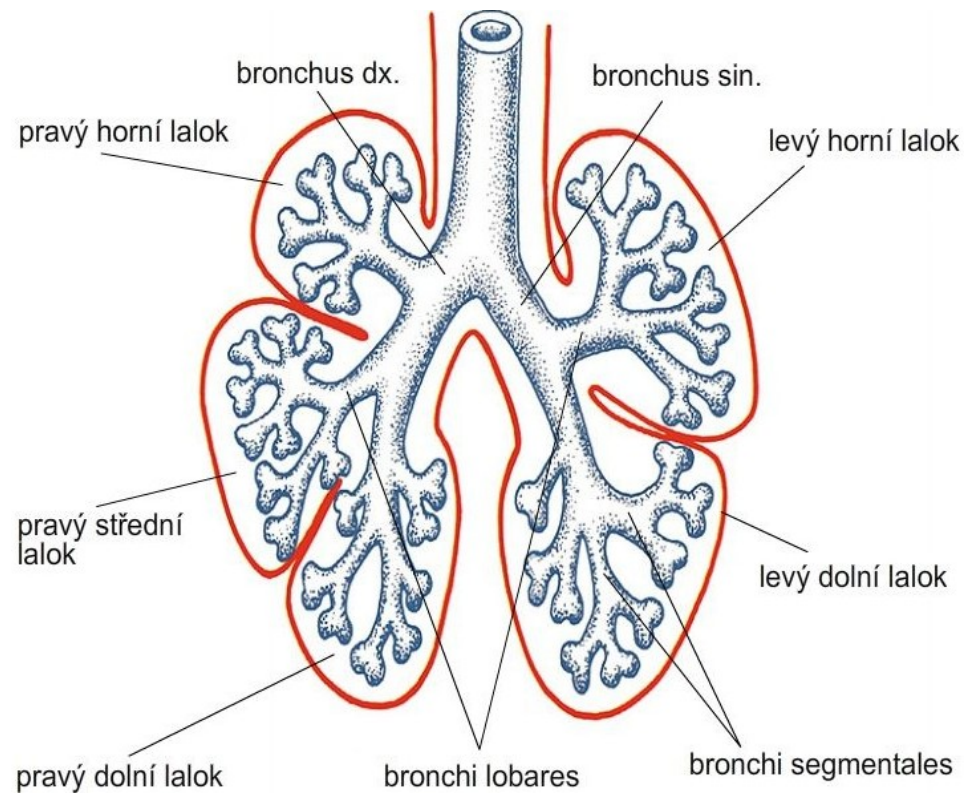
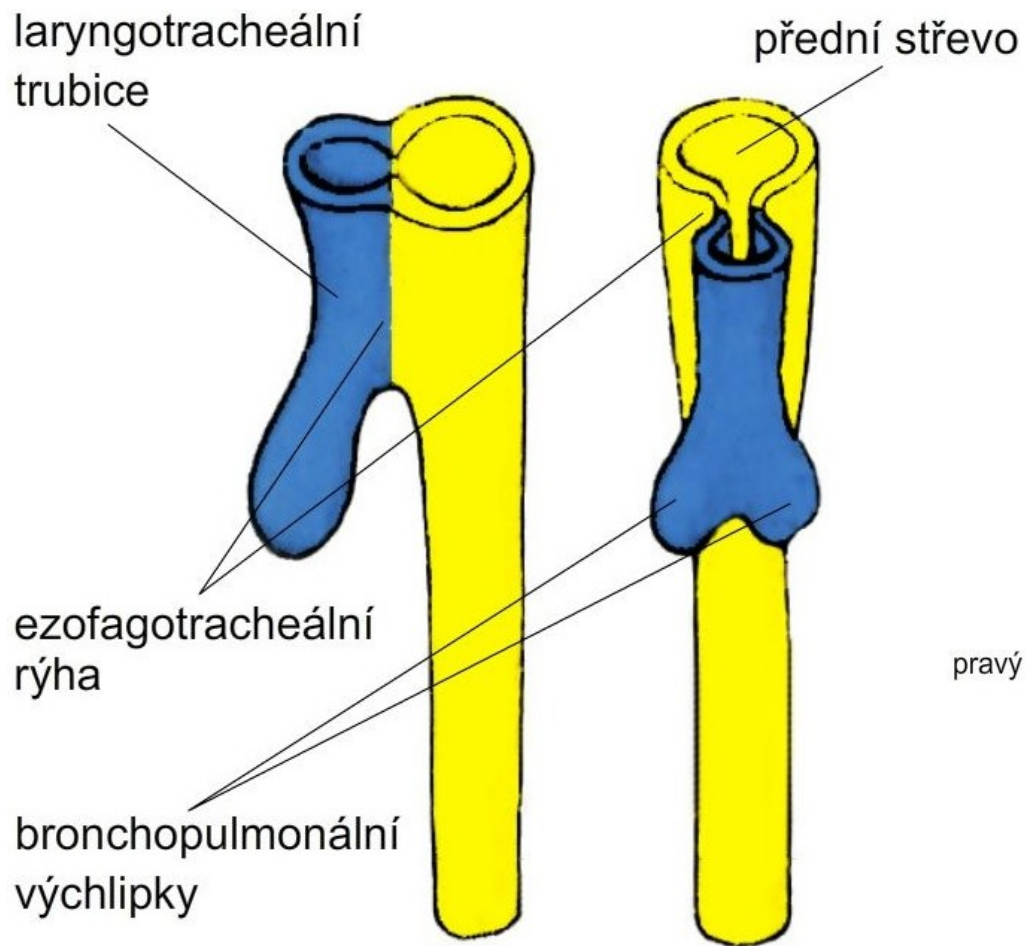




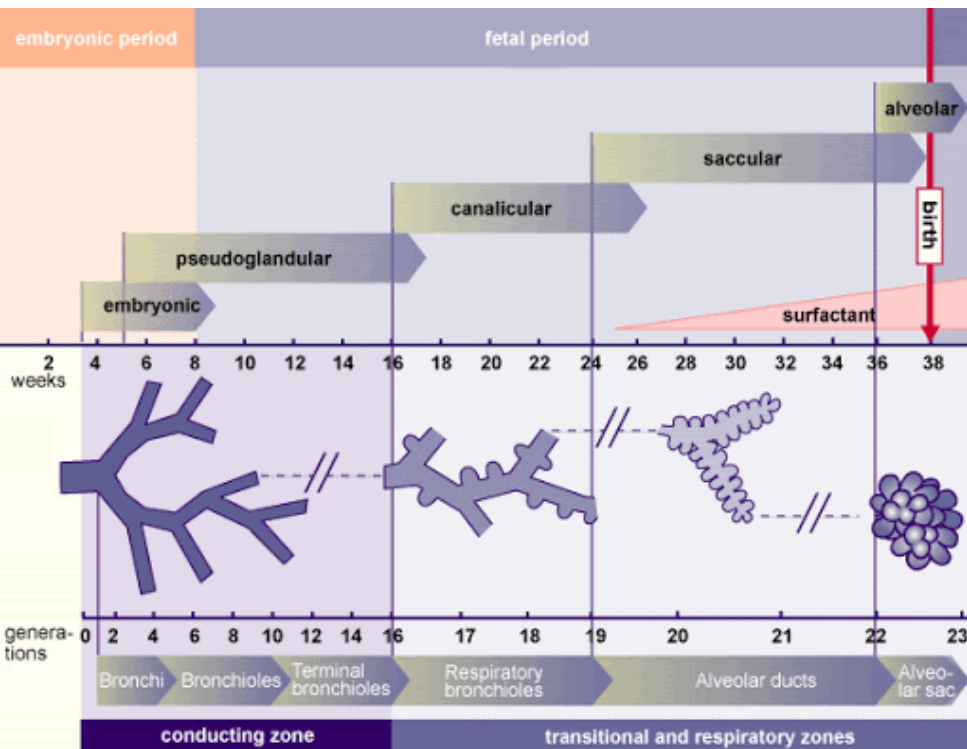
# Vývoj dýchacího systému



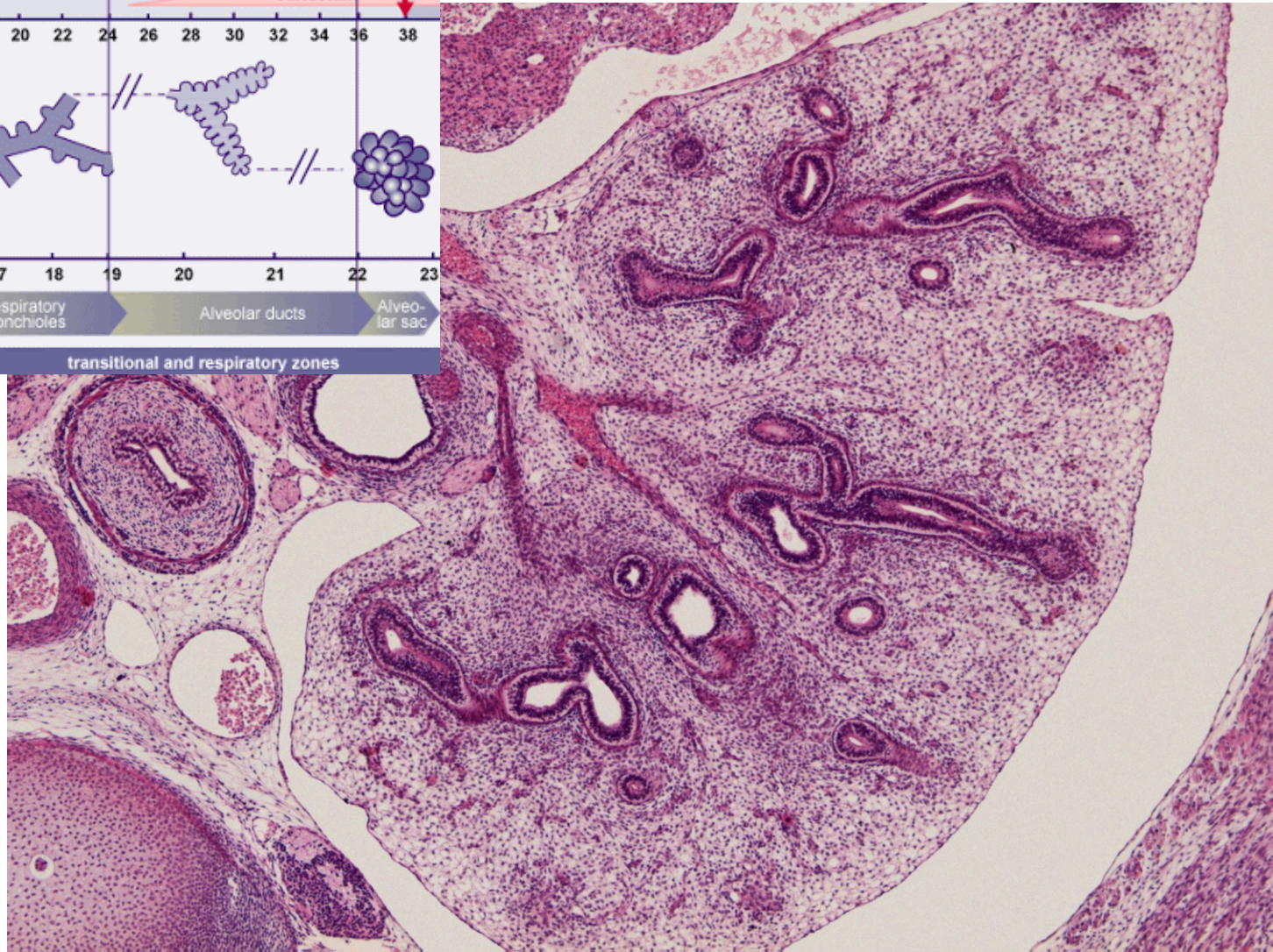








## Zárodek člověka (8. týden)







# Dýchací systém

## Preparáty

24. Concha nasi

25. Epiglottis (+ 28.)

26. Larynx

27. Trachea

29. Pulmo

## Atlas EM

Čichový epitel (23)

Bronchiolus (60)

Alveolární epitel (61)

Vývoj plic (83)