
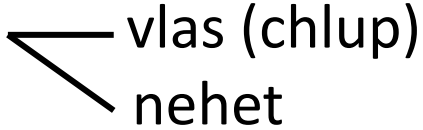
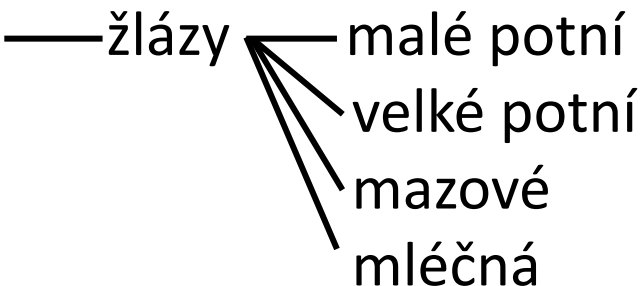




KŮŽE A KOŽNÍ ADNEXA

- Kůže 
 - tenký typ
 - tlustý typ
- Rohovějící adnexa 
 - vlas (chlup)
 - nehet
- Nerohovovějící adnexa 
 - žlázy
 - malé potní
 - velké potní
 - mazové
 - mléčná

Kůže (integumentum)

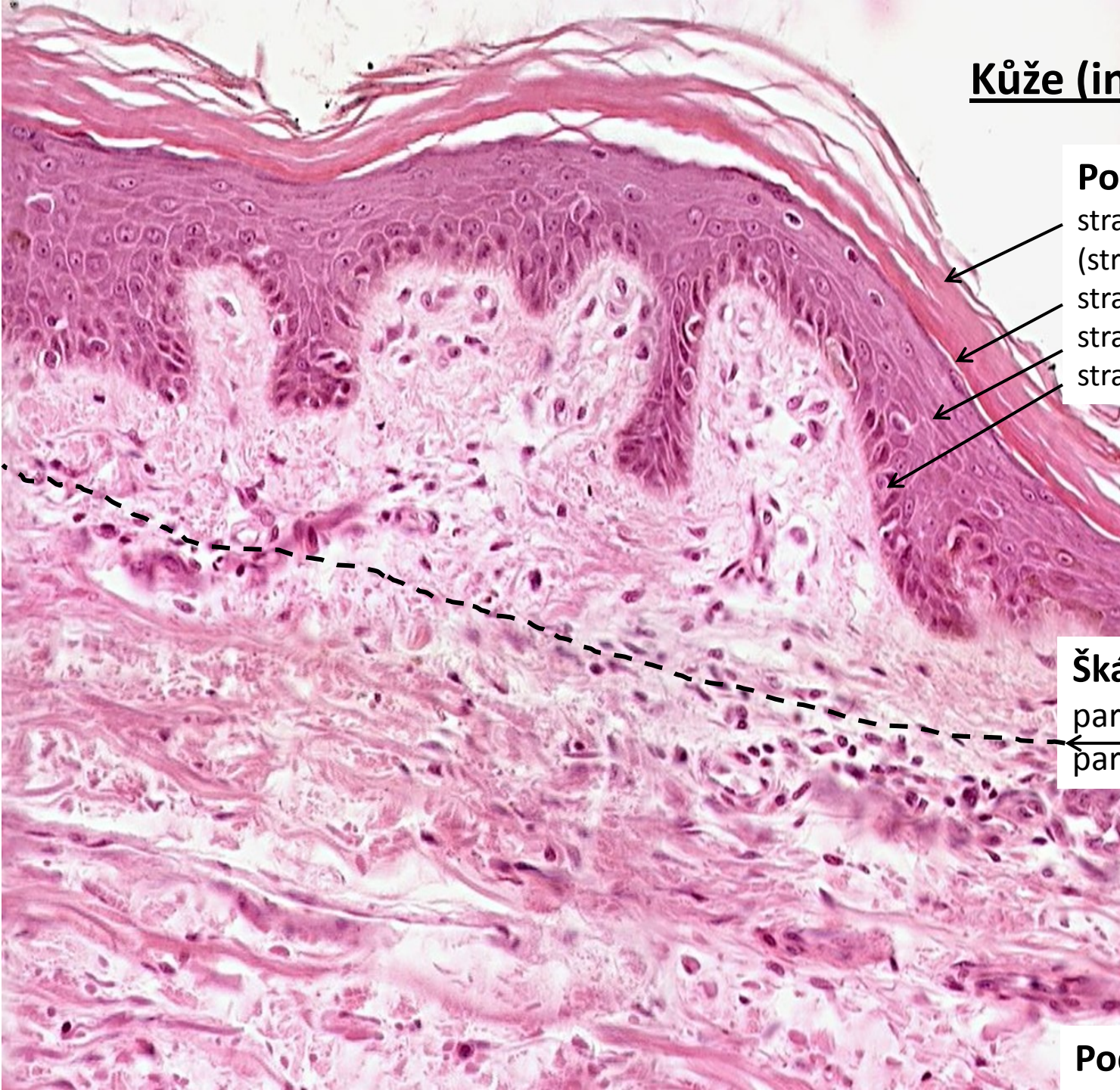
Pokožka (epidermis)

stratum corneum proprium
(stratum lucidum)
stratum granulosum
stratum spinosum
stratum basale

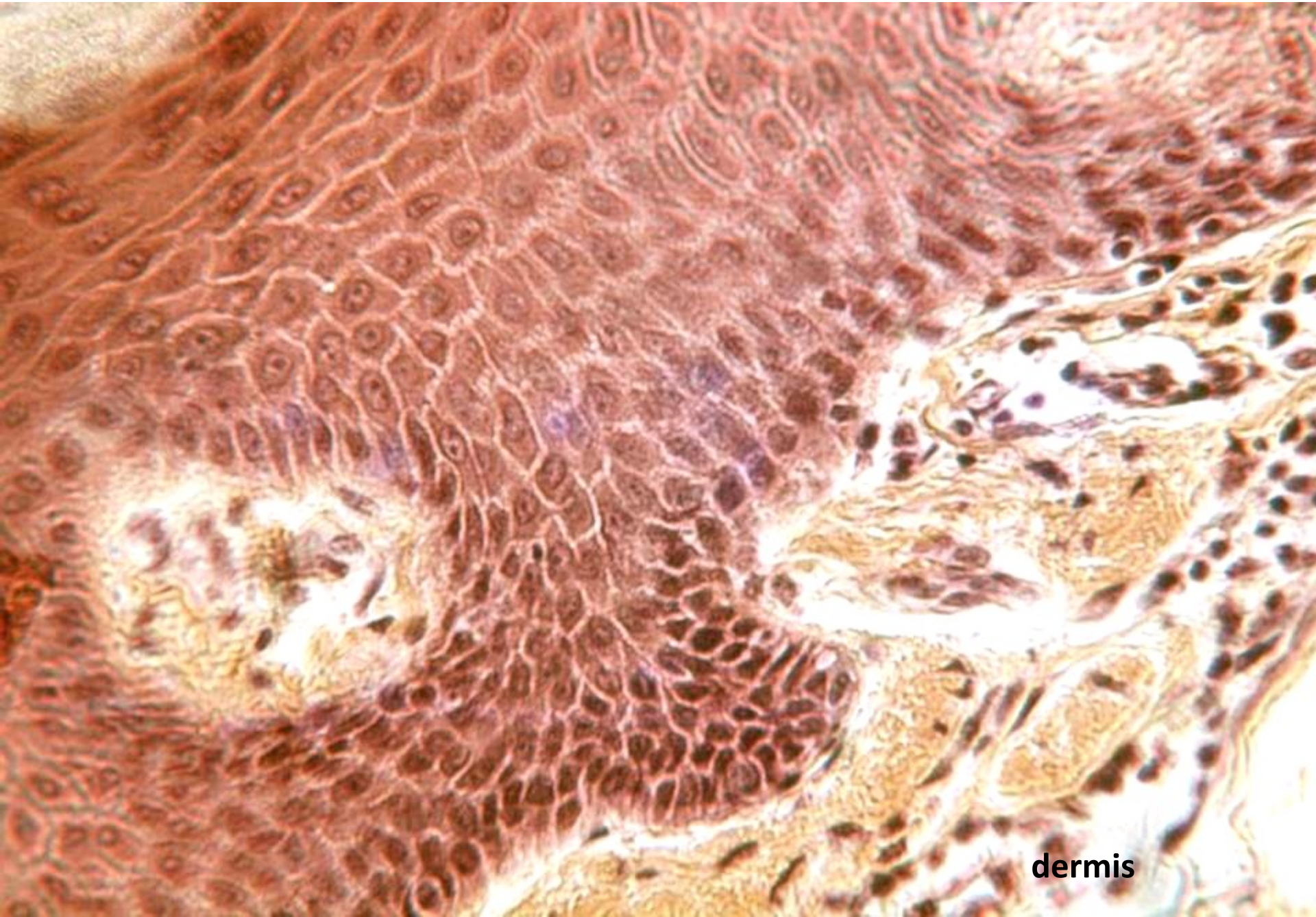
Škára (dermis, corium)

pars papillaris
pars reticularis

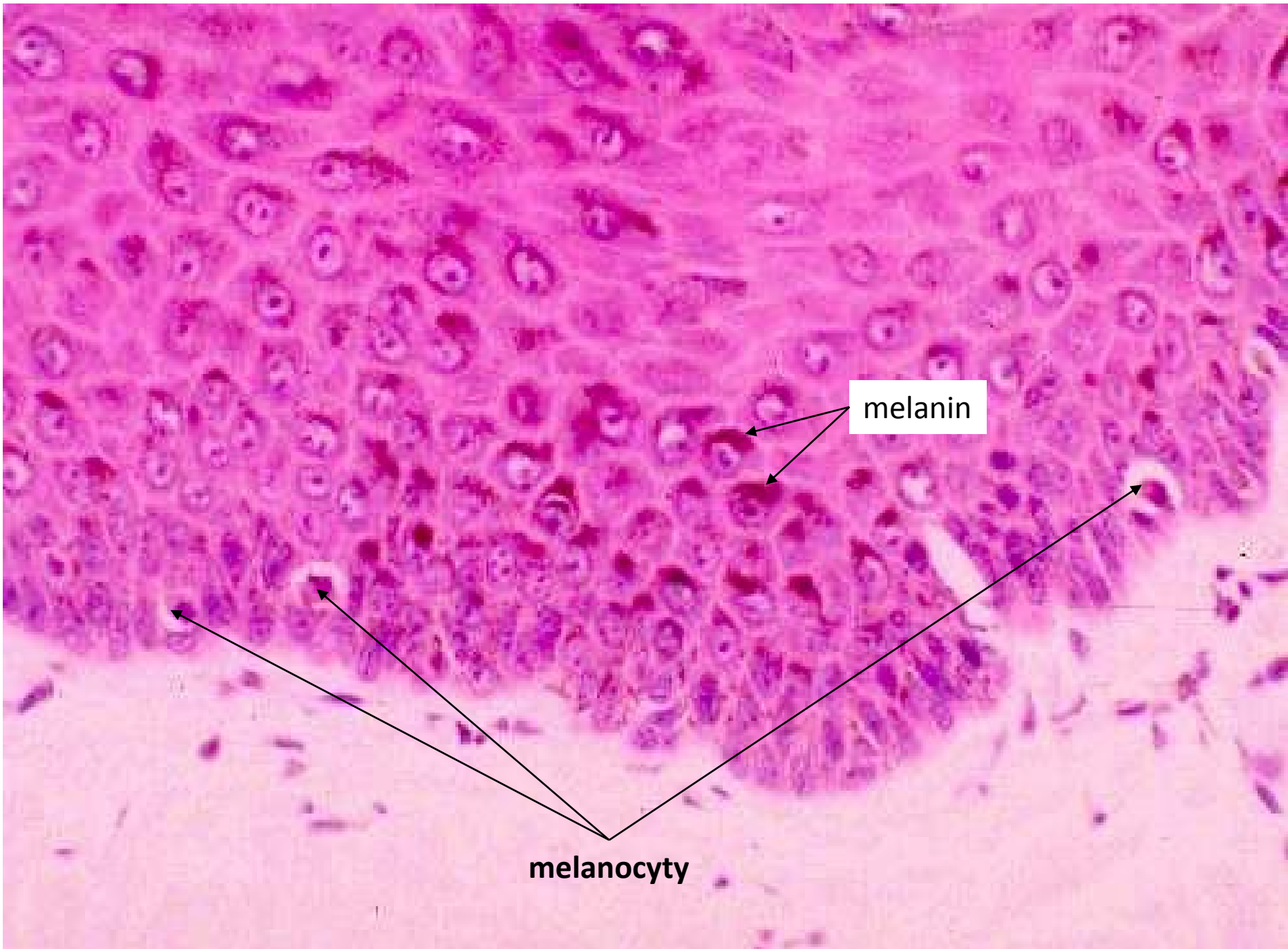
Podkoží (hypodermis)



Epidermis



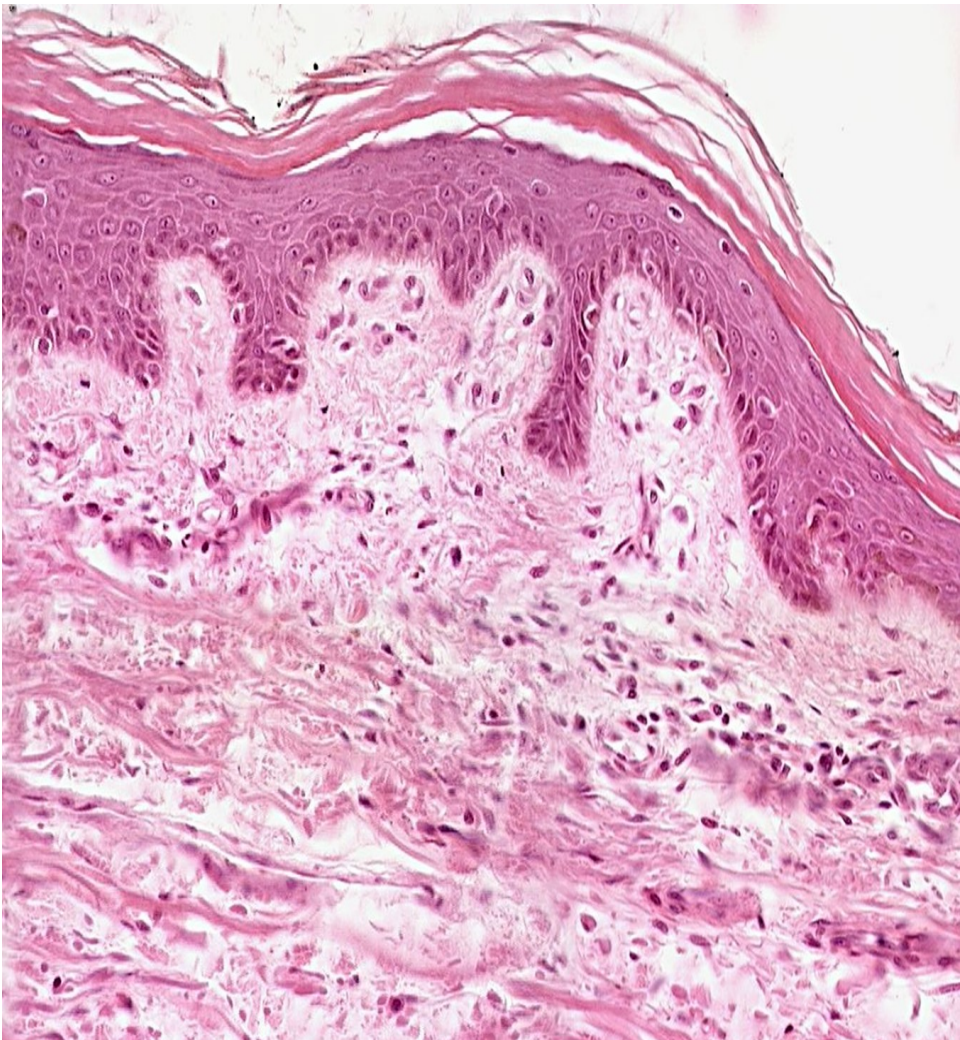
dermis



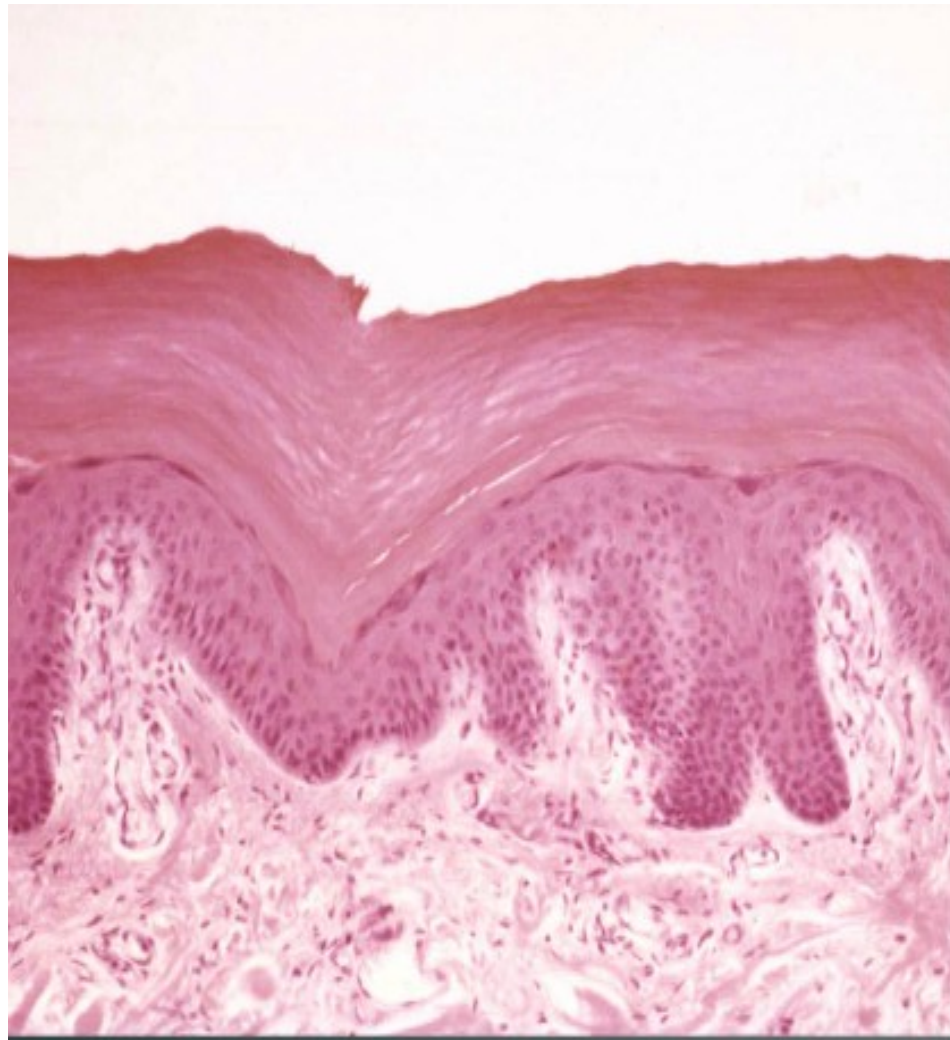
melanin

melanocyty

Tenký typ kůže



Tlustý typ kůže

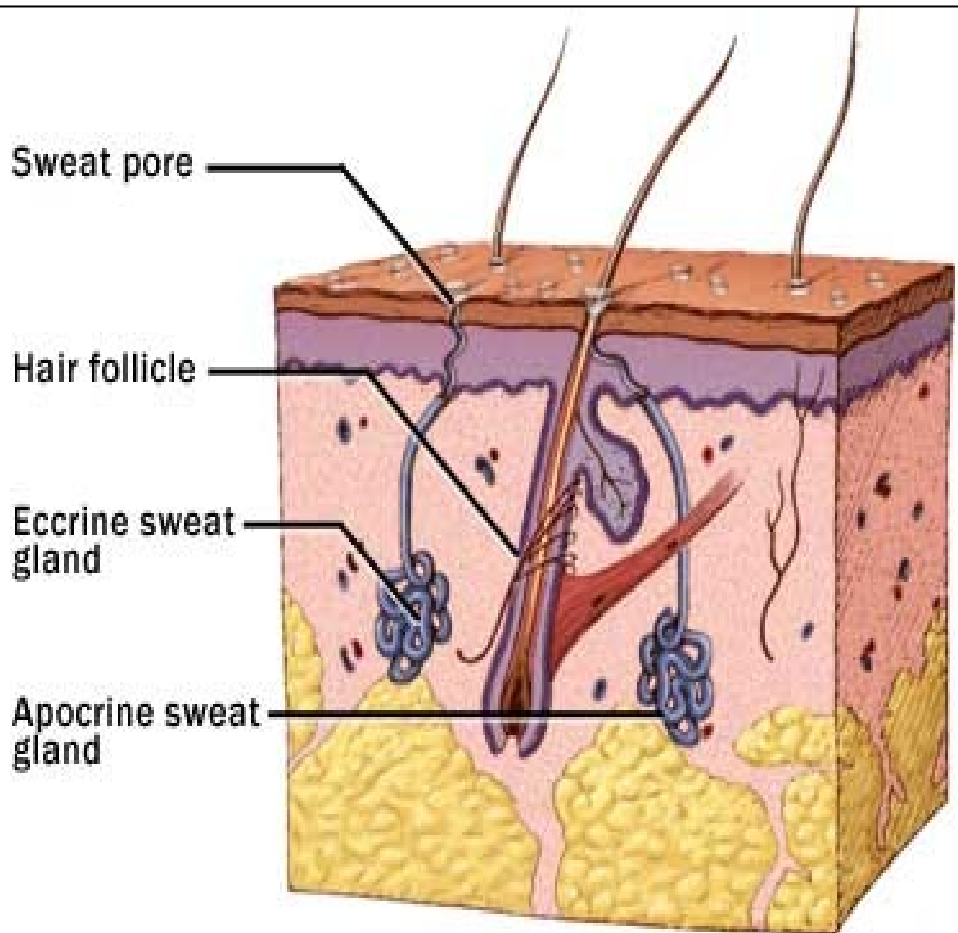


Výskyt: palma manus, planta pedis

Kožní žlázy

malé potní (ekrinní)
velké potní (apokrinní)
mazové (holokrinní)

} Gll. sudoriferae
Gll. sebaceae

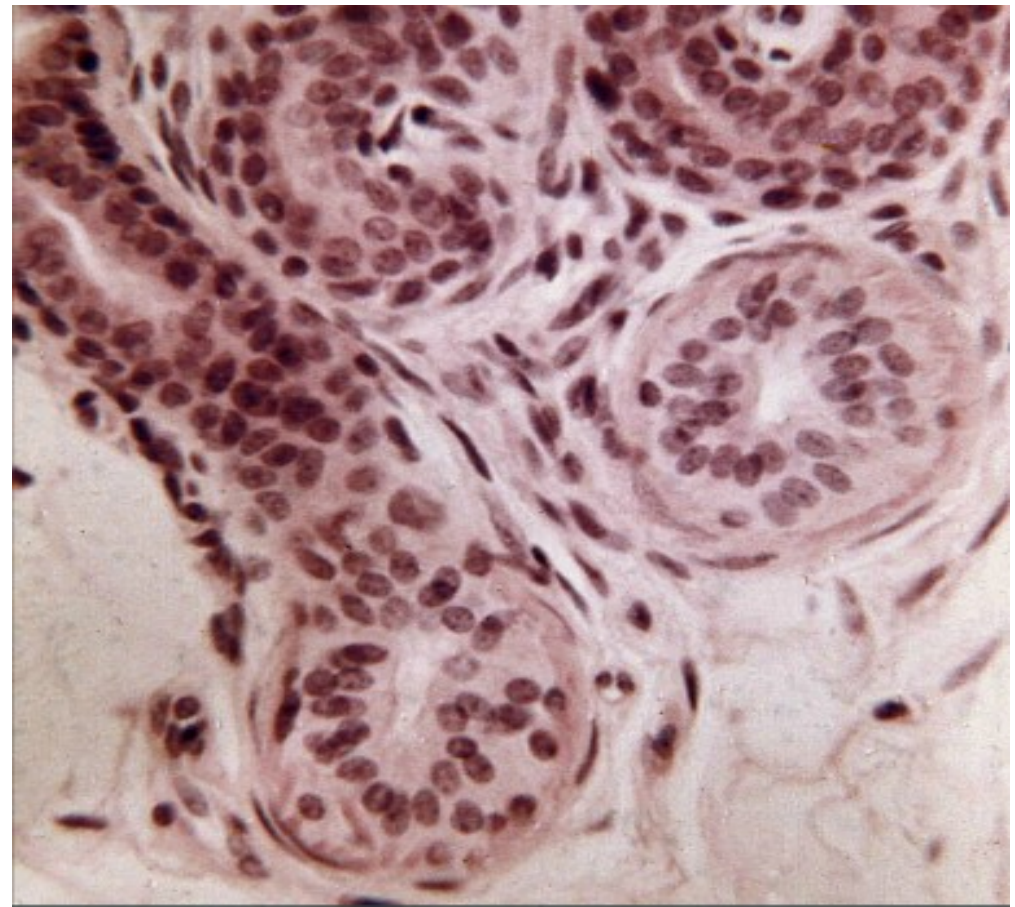
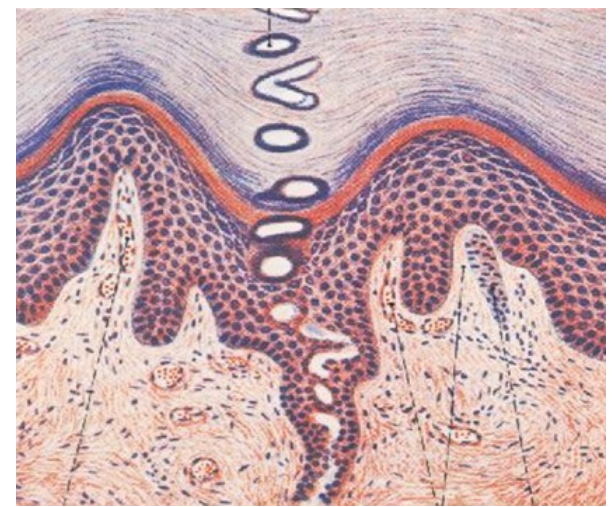
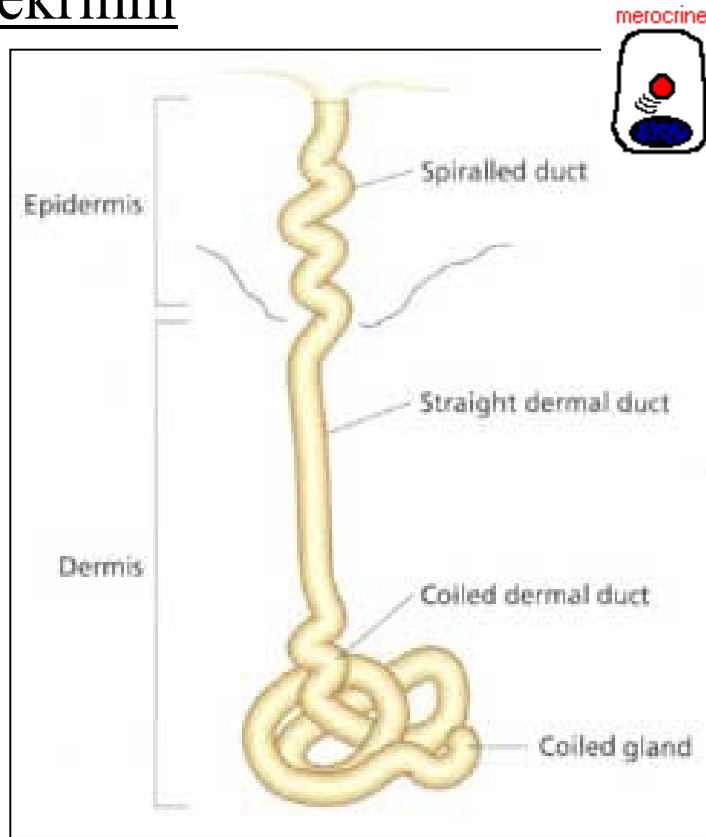


Stavba žláz – obecně:

- vývodní oddíl
- sekreční oddíl
 - žlázové buňky
 - myoepitelové buňky

POTNÍ ŽLÁZY (gll. sudoriferae)

ekrinní

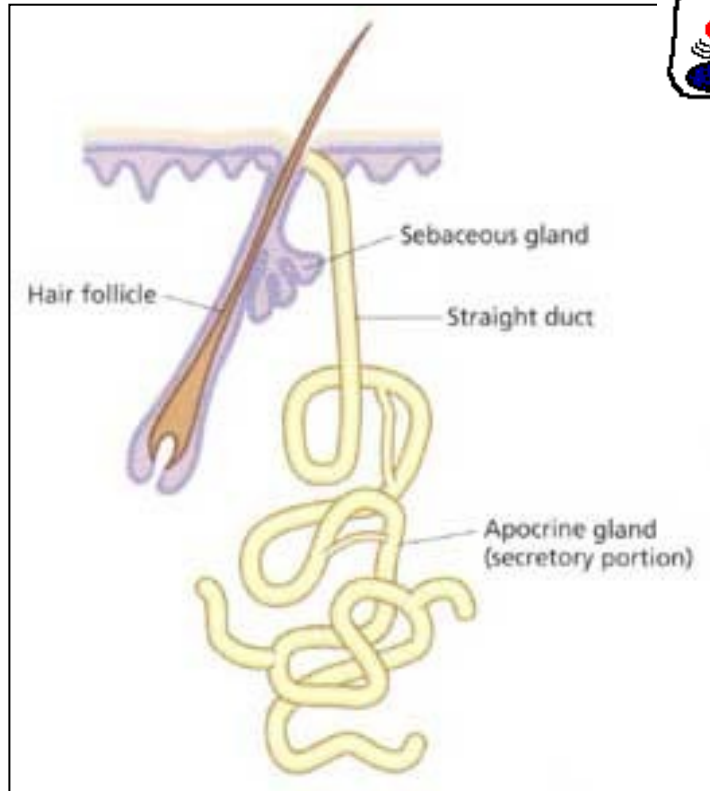


POT – H₂O, NaCl₂, NH₃,
urea, kys. močová, proteiny

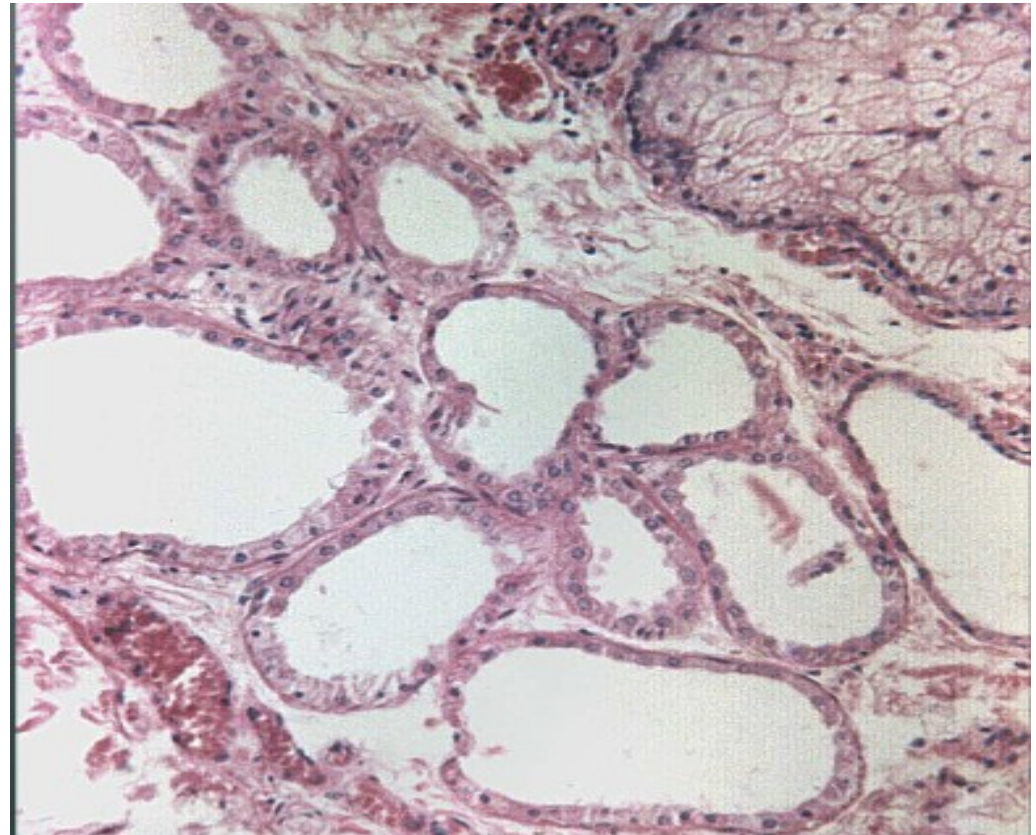
POTNÍ ŽLÁZY (gll. sudoriferae)

apokrinní (aromatické)

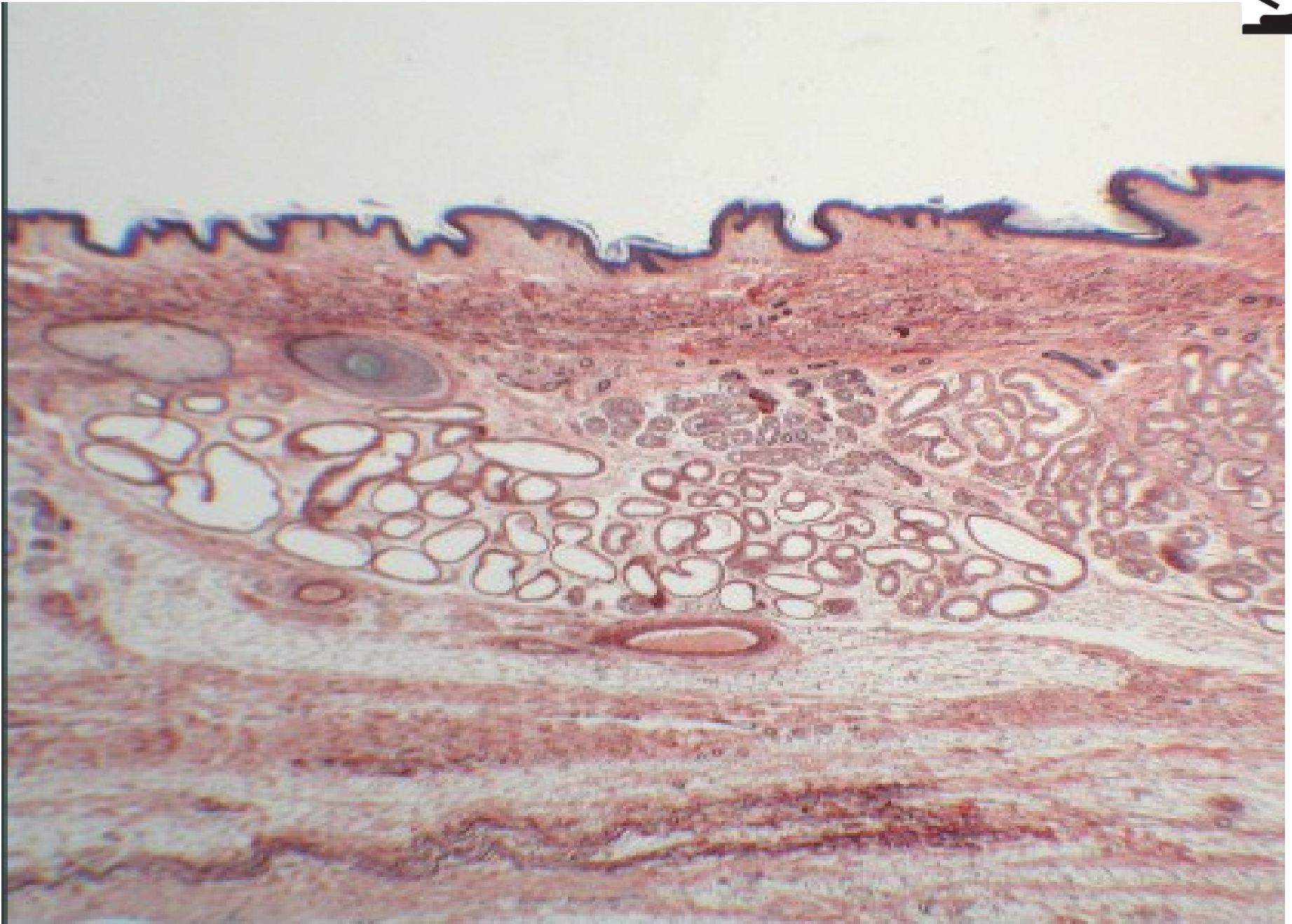
apocrine



po pubertě doplňují **pot**
–feromony, tuk, steroidy;
vliv hormonů



Kůže z axilly – velké potní žlázy (apokrinní, aromatické)

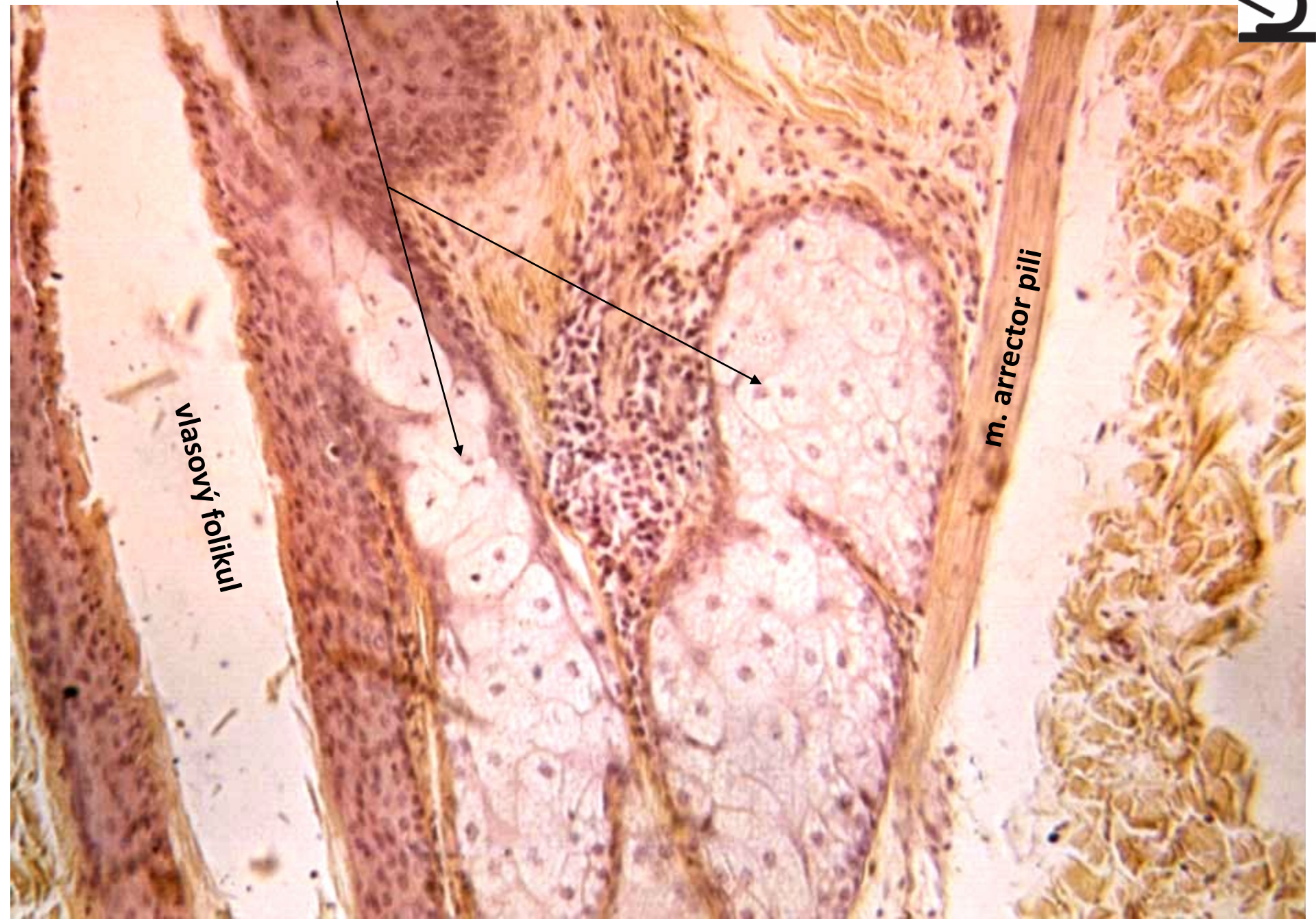


Mazová žláza (HEŠ)

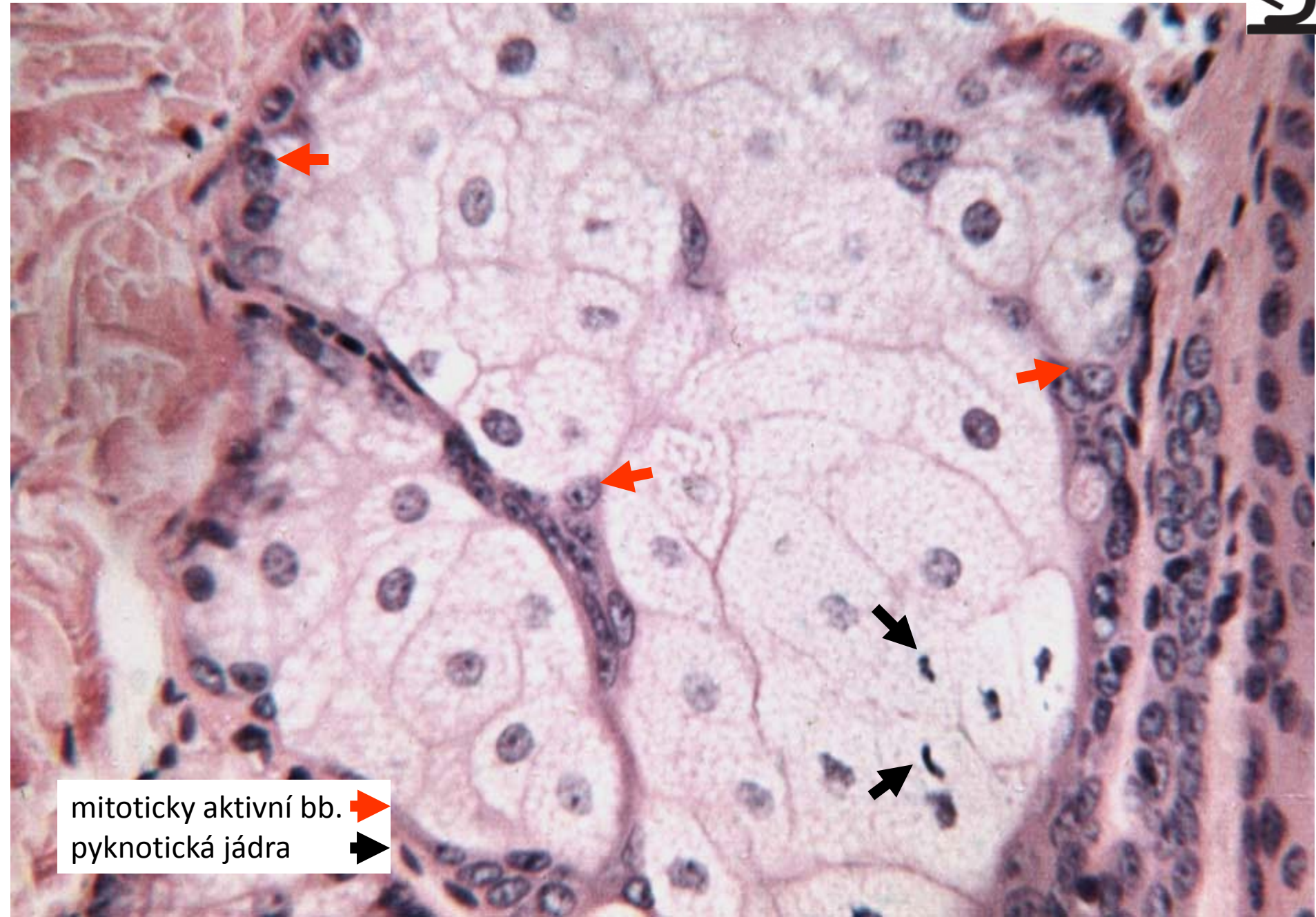




vlasový folikul

m. arrector pili

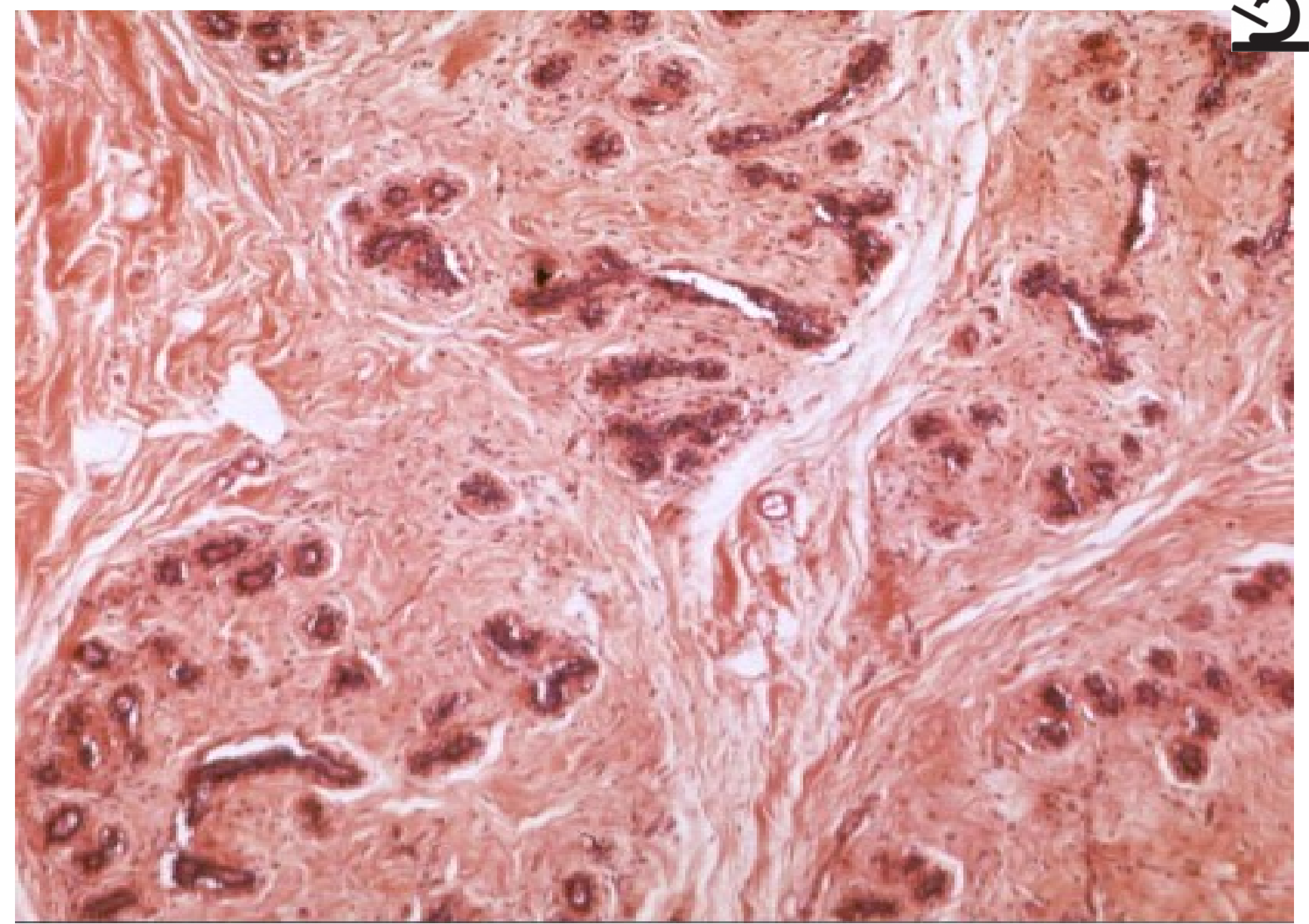


Mazová žláza (HE)

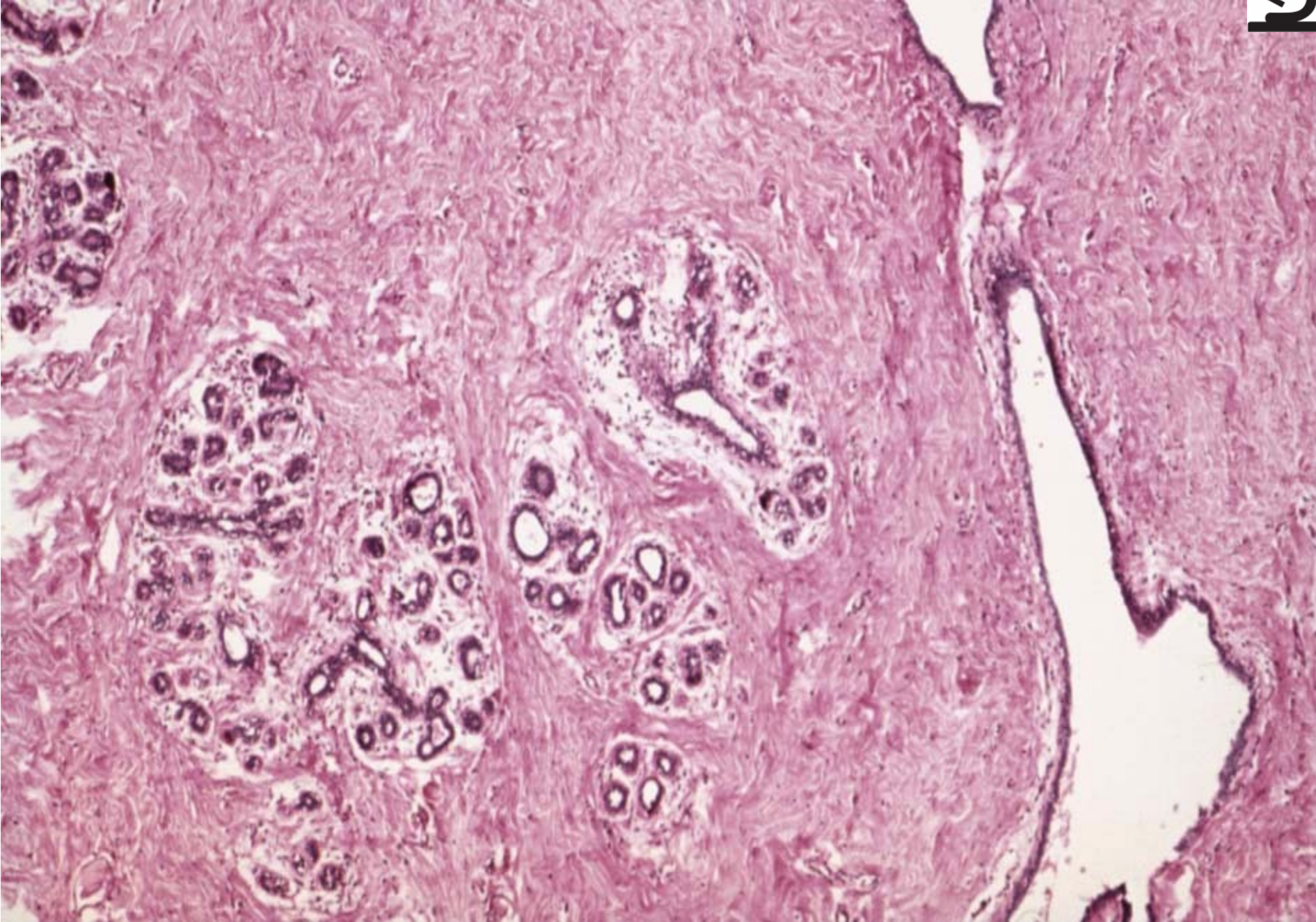


mitoticky aktivní bb. 
pyknotická jádra 

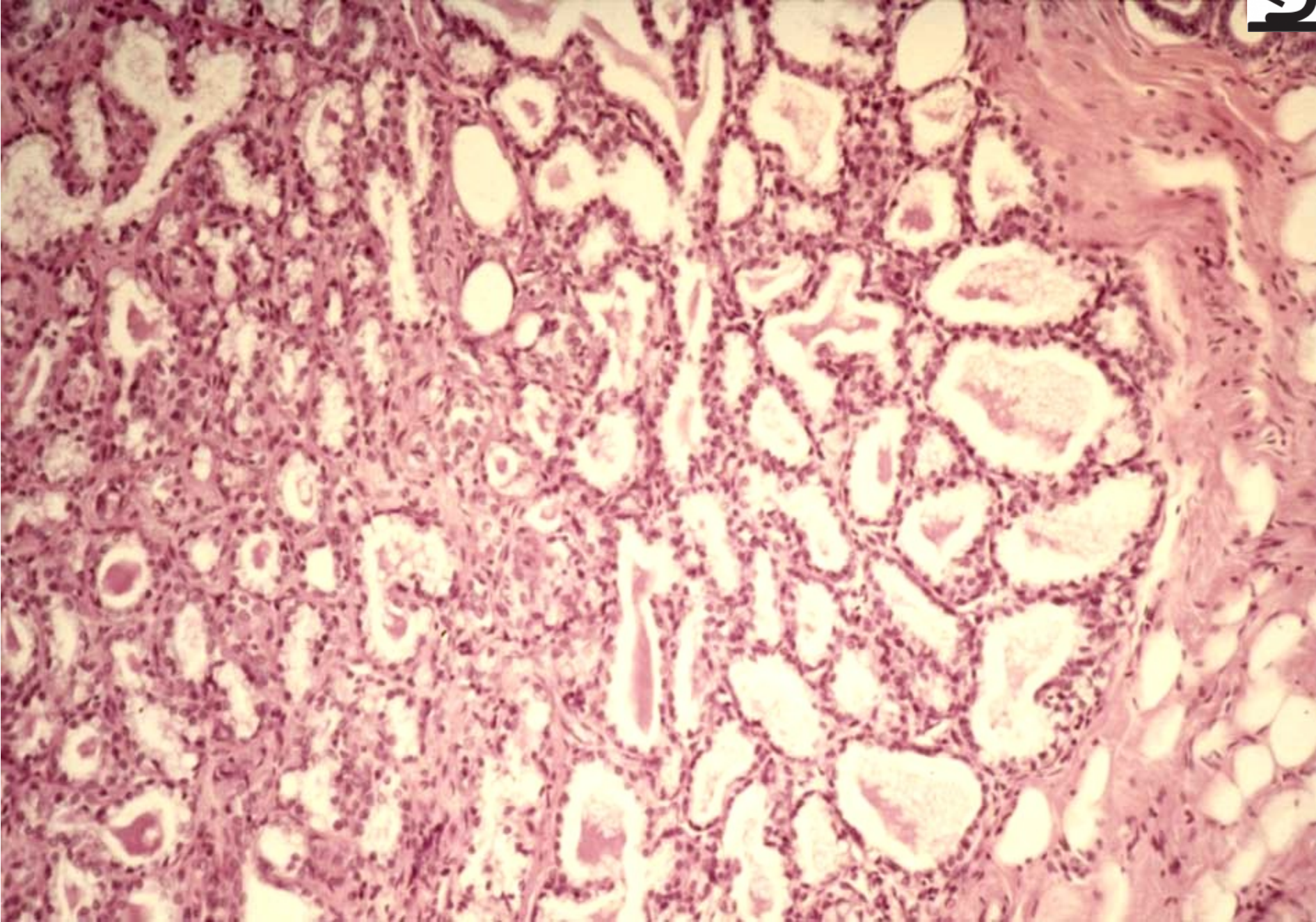
Mamma non lactans (HE)



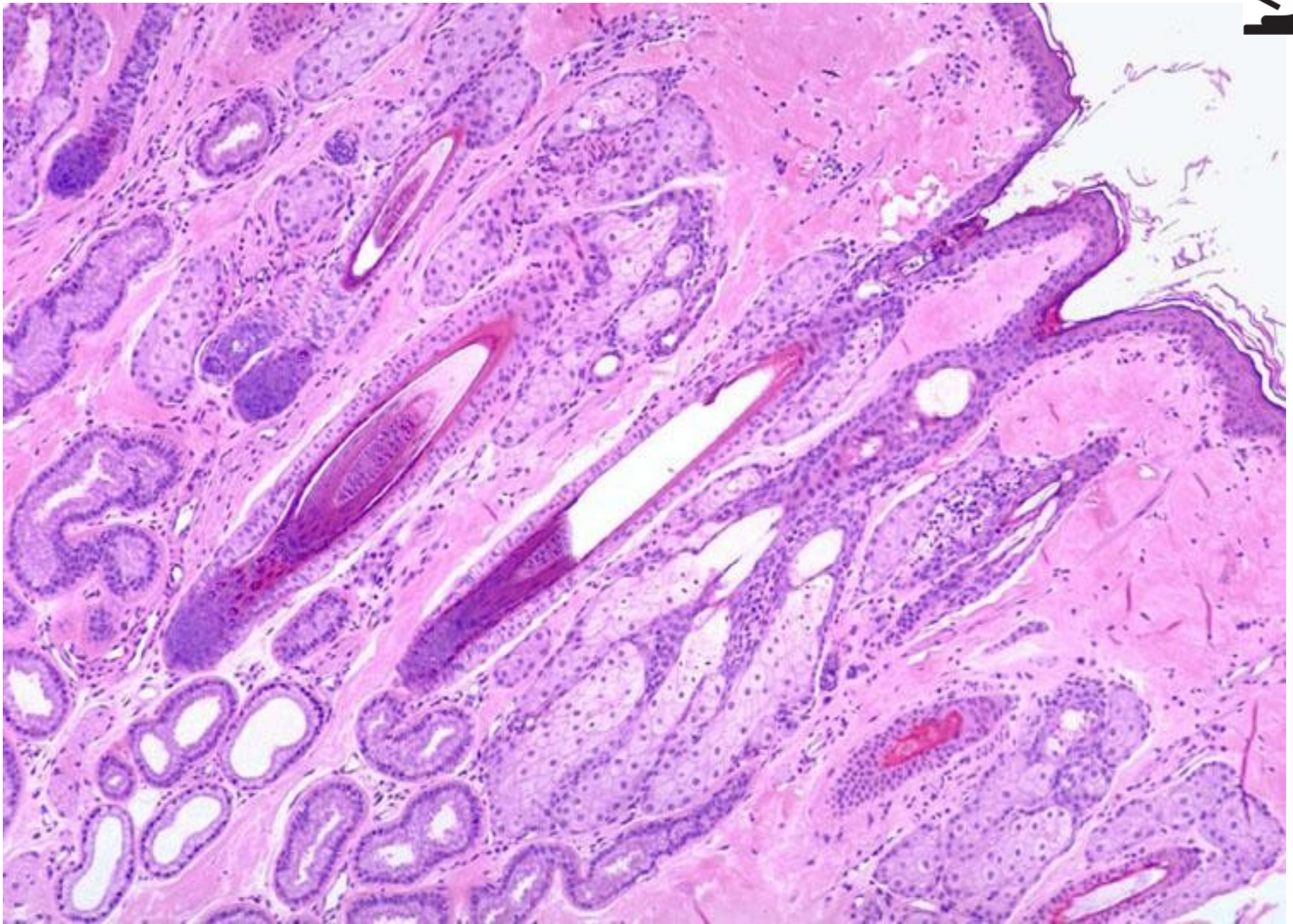
Mamma non lactans (HE)



Mamma lactans (HE)



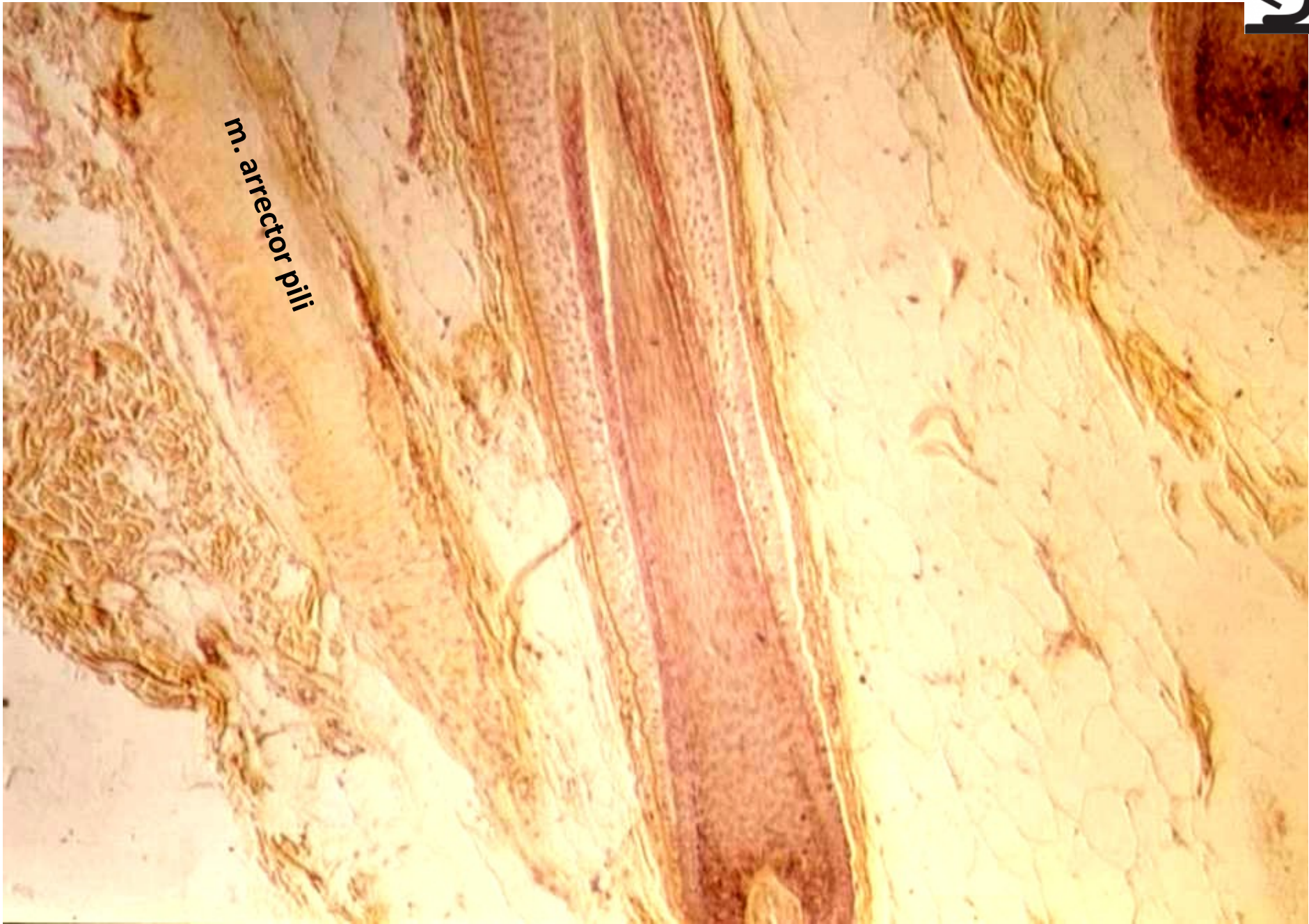
Kůže z axily



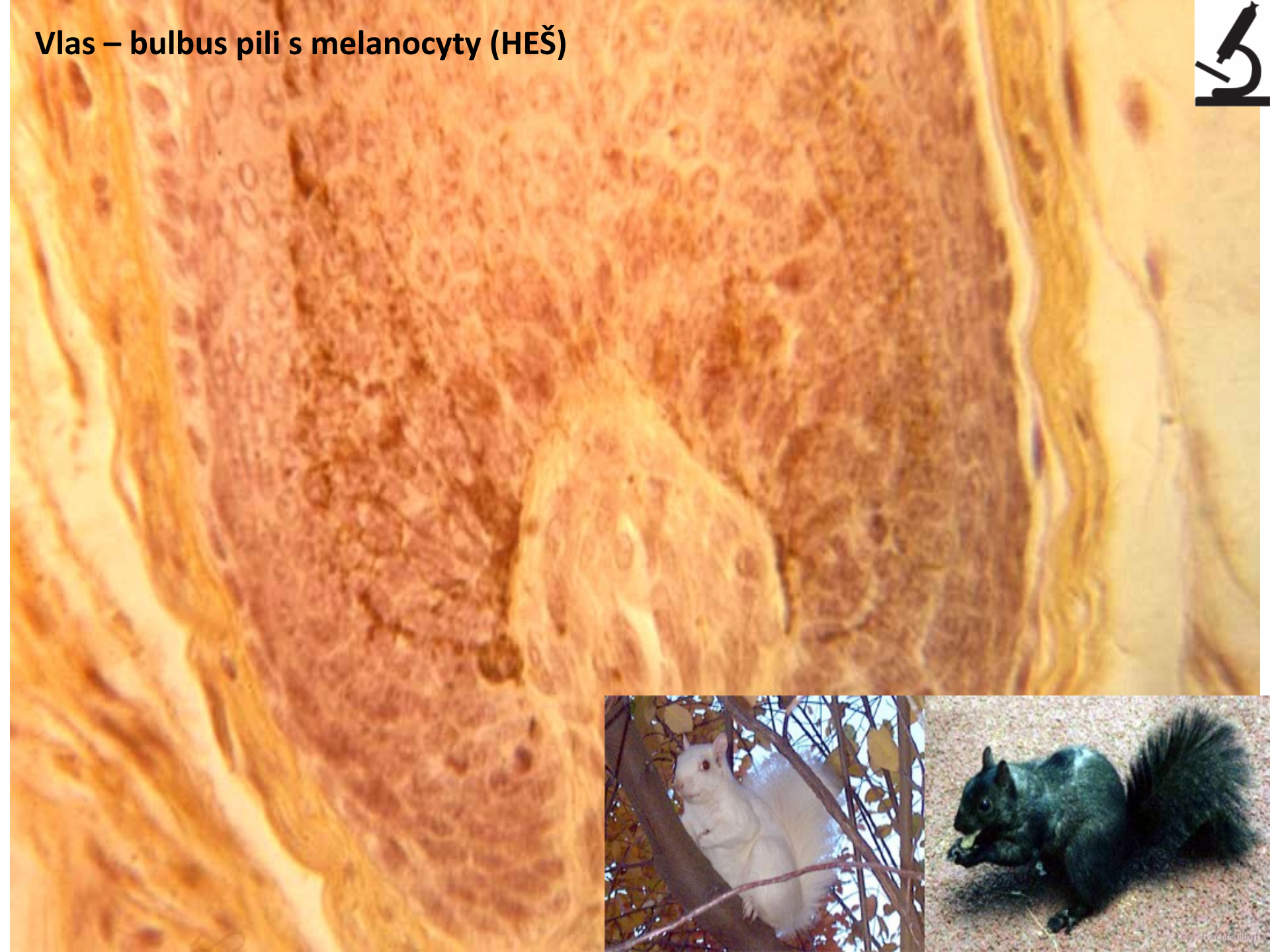
Vlas (HEŠ)



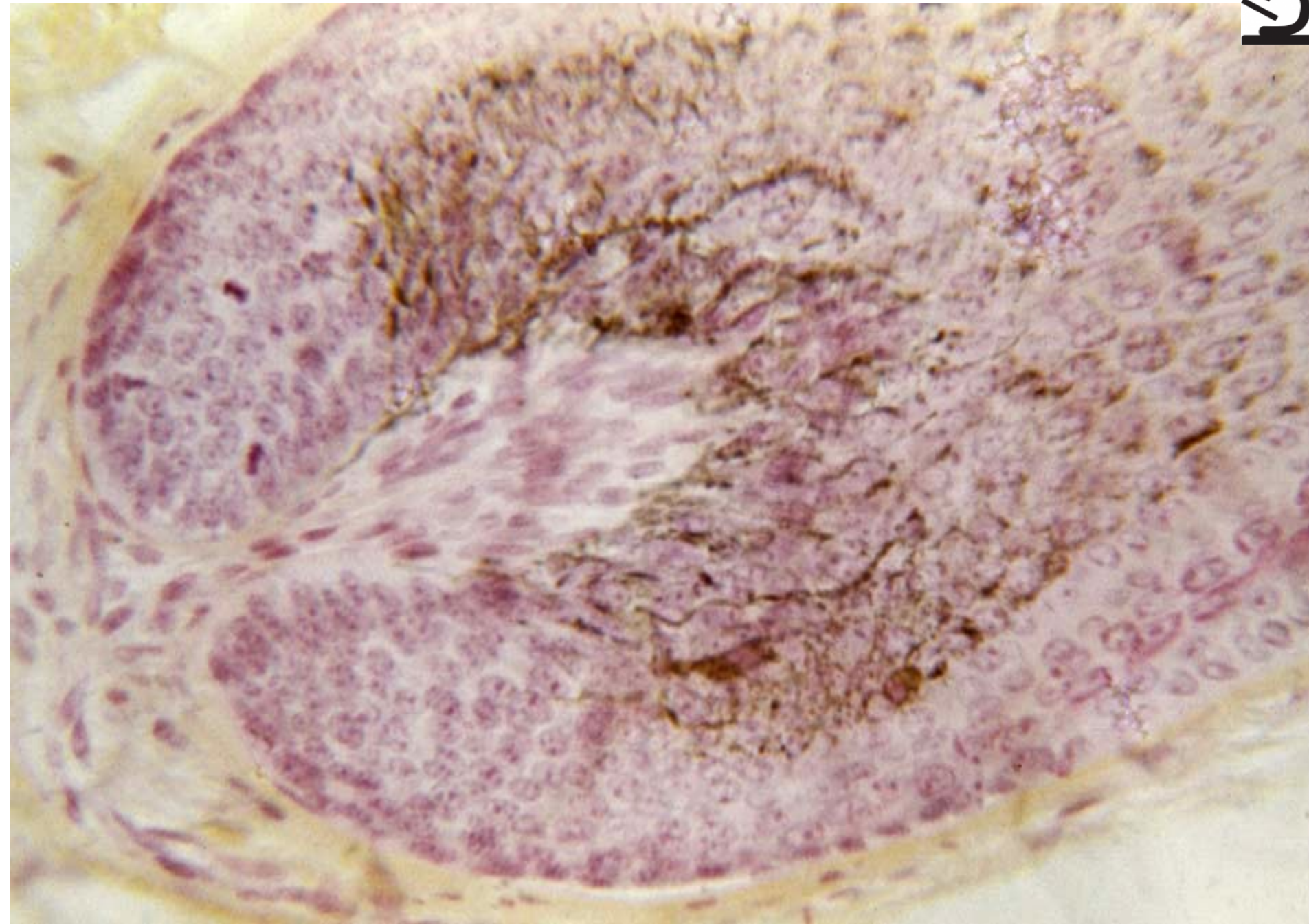
m. arrector pili



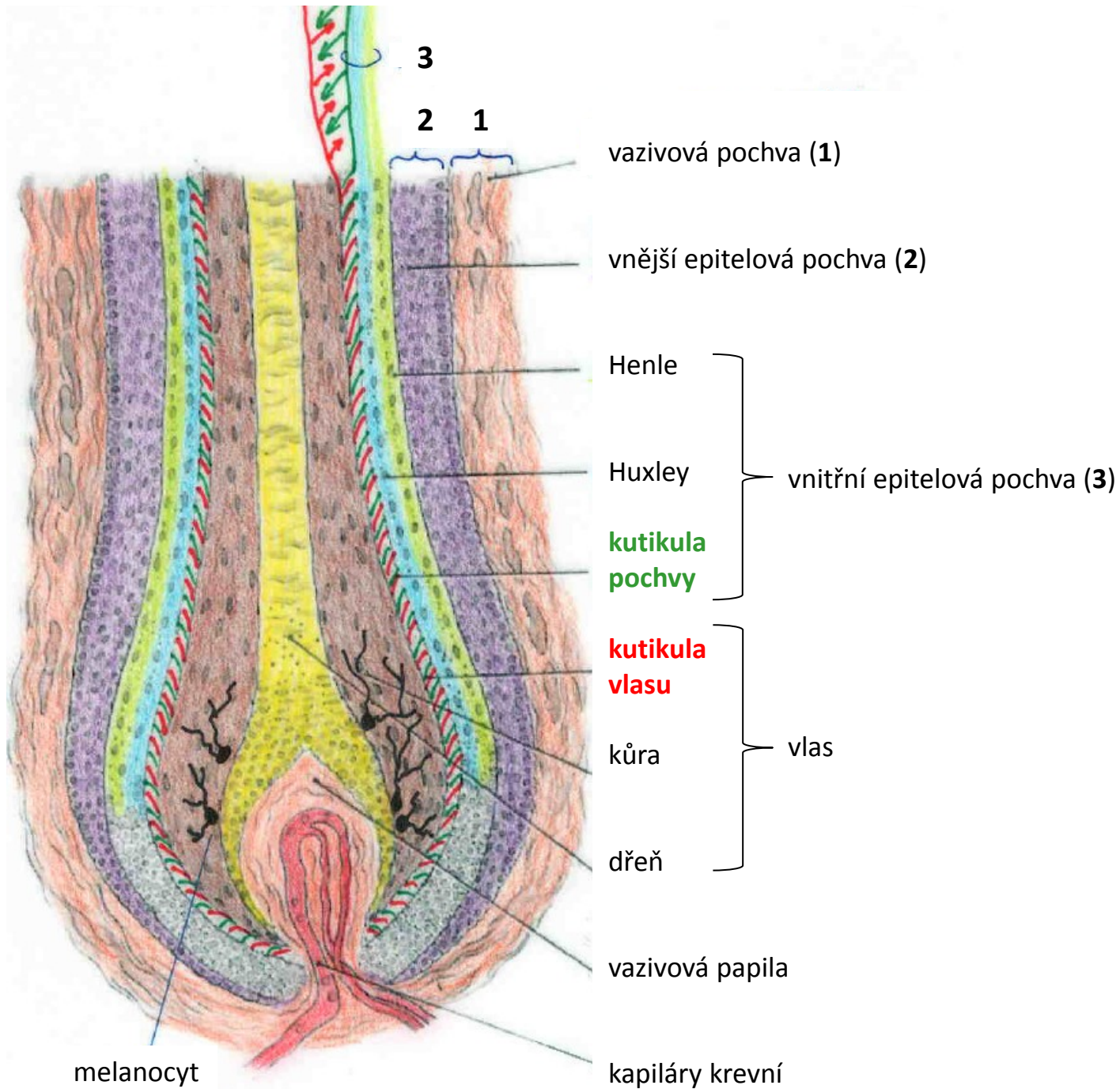
Vlas – bulbus pili s melanocyty (HEŠ)



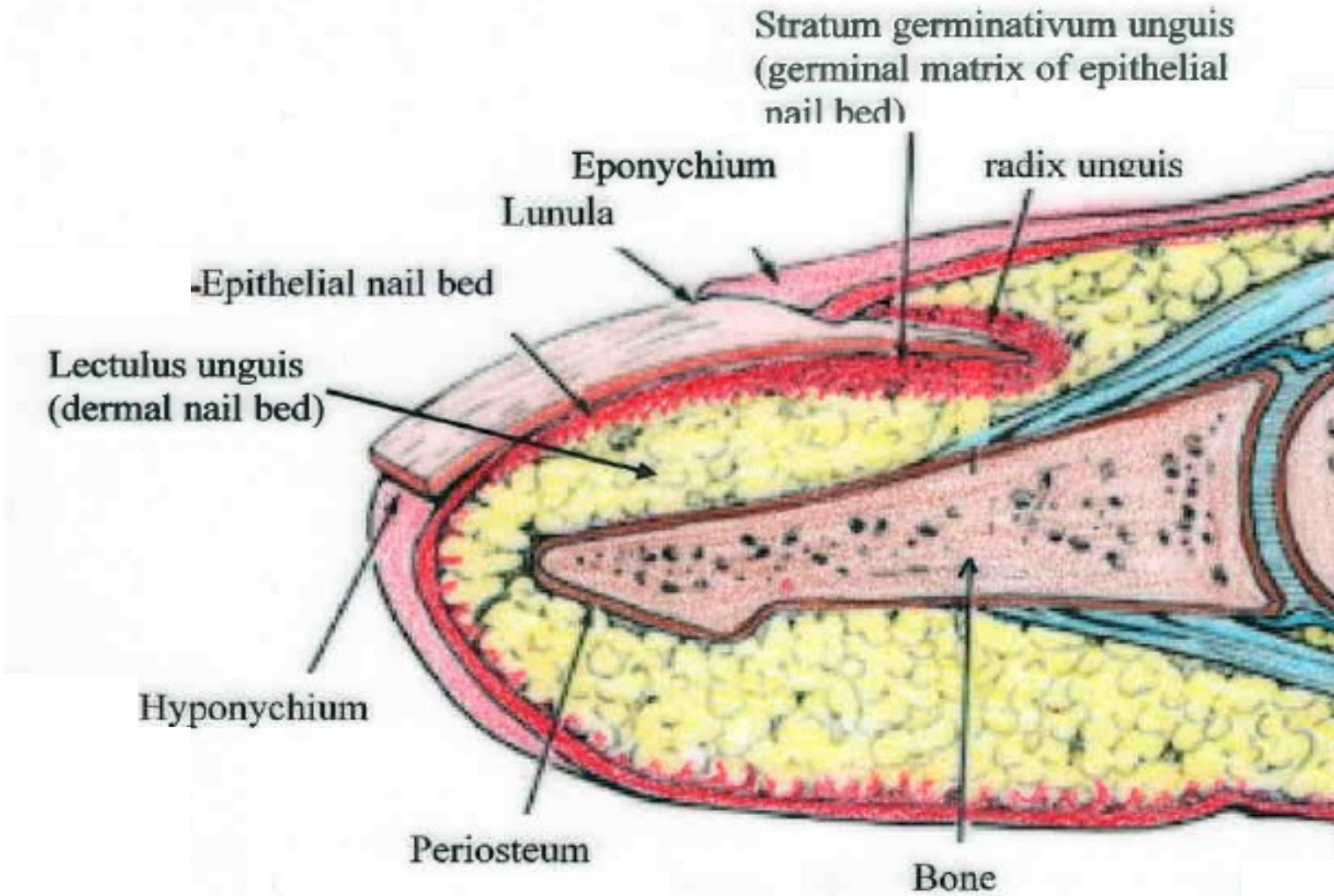
Vlas – bulbus pili s melanocyty, papilla pili (HEŠ)



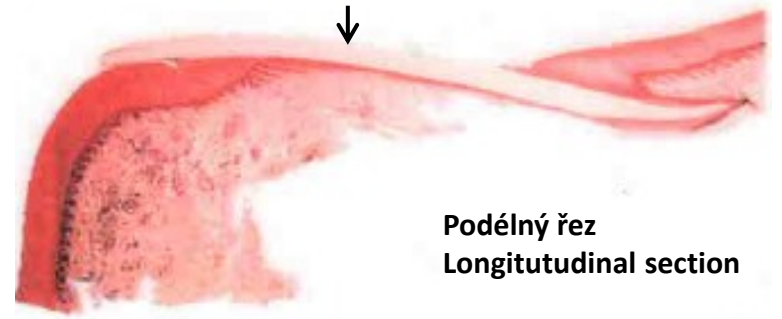
Vlas – Pilus (lat)



Nehet – Unguis (lat) – Onyx (gr)

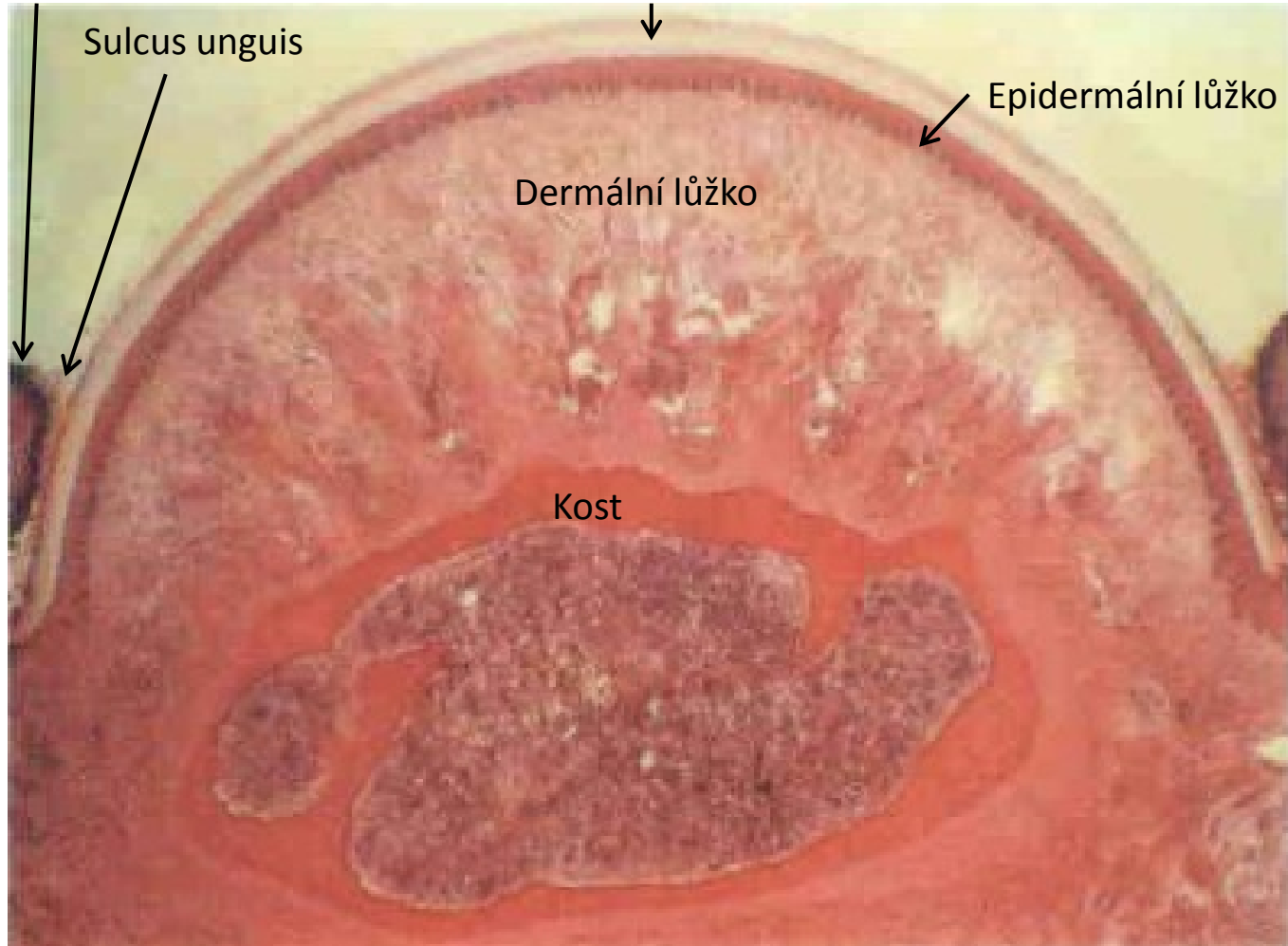


Nehet



Vallum unguis

Nehtová ploténka



Příčný řez
Cross section



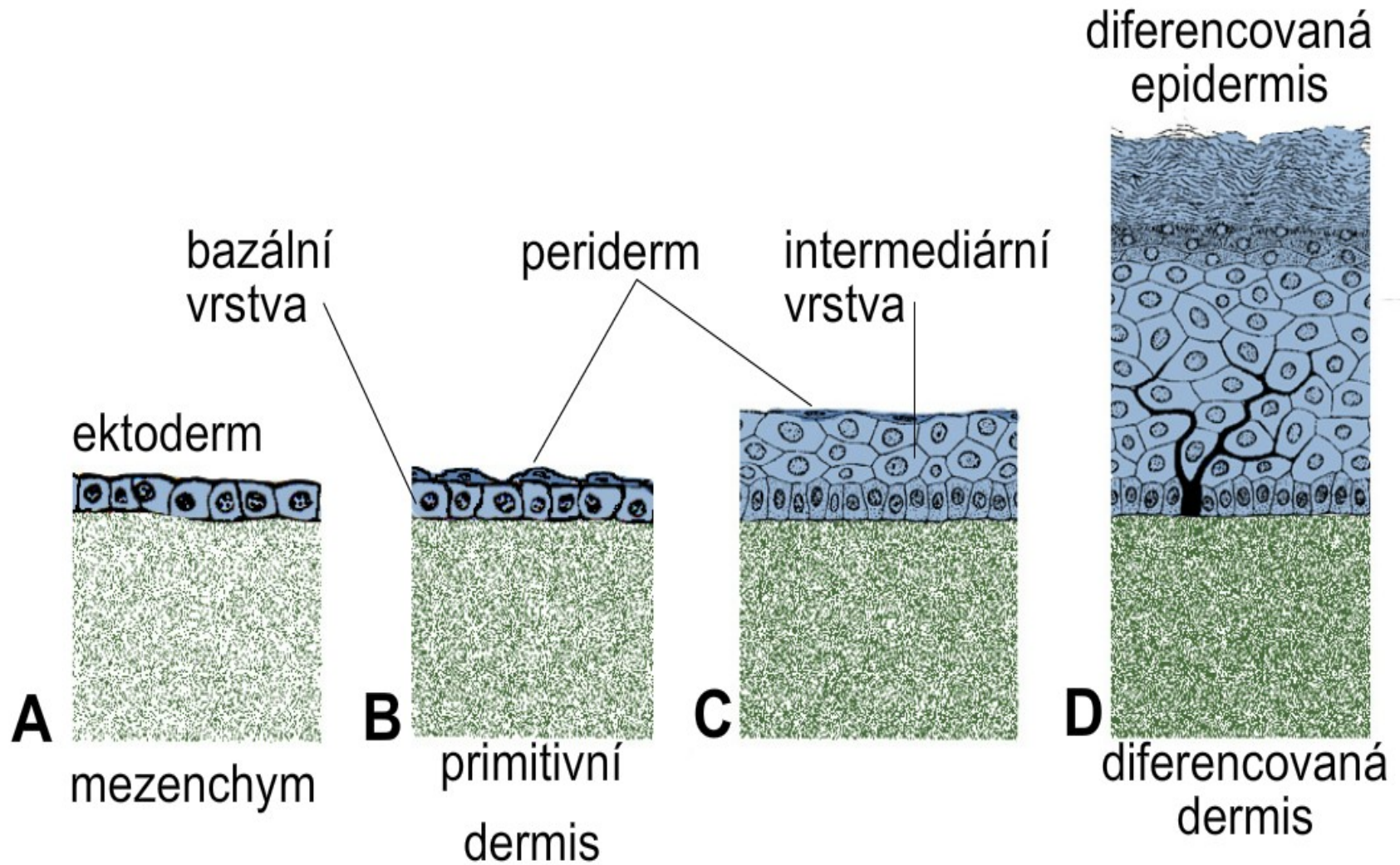
KŮŽE A KOŽNÍ ADNEXA



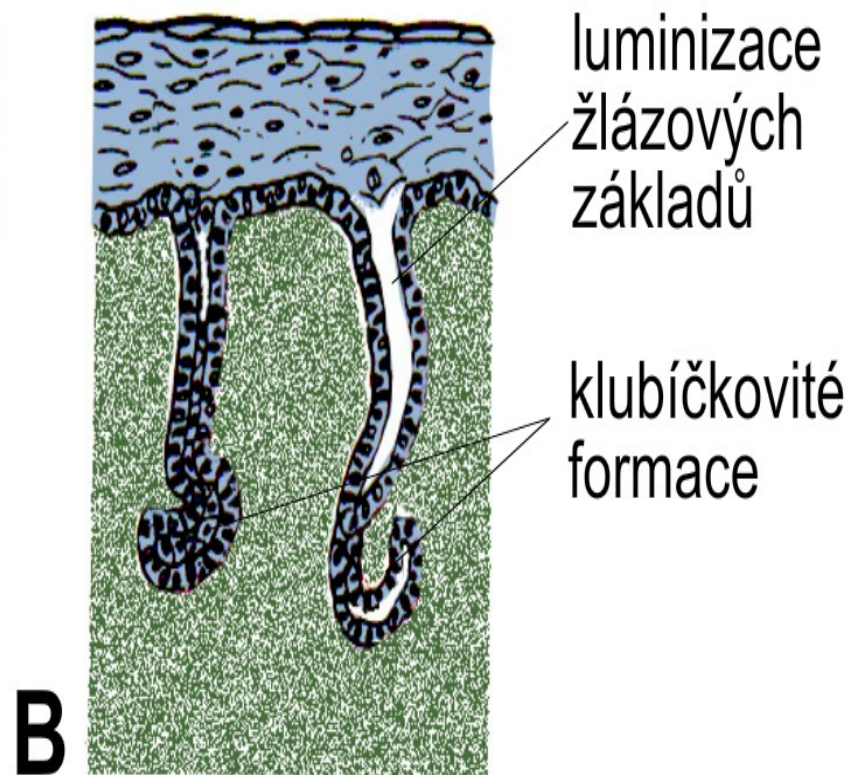
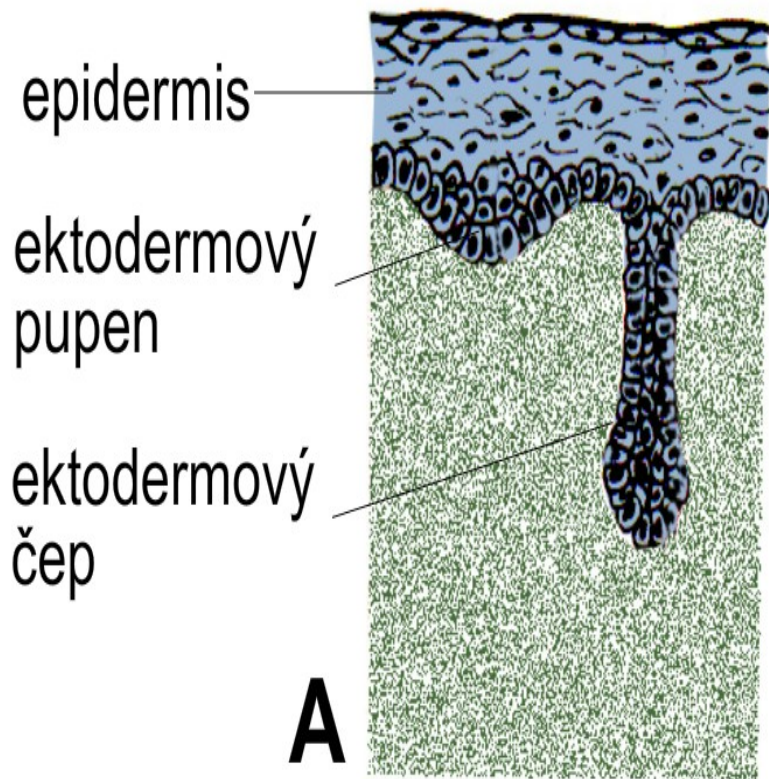
Preparáty:

- 69. Kůže z břicha prstu
- 70. Kůže z axilly
- 71. Kůže s vlasy
- 72. Nehet
- 73. Mamma non-lactans
- 74. Mamma lactans

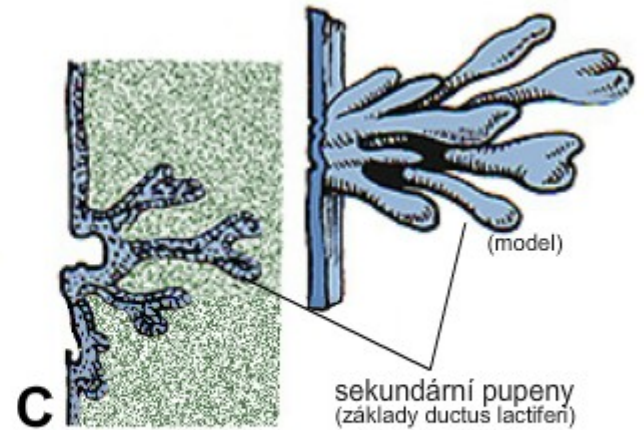
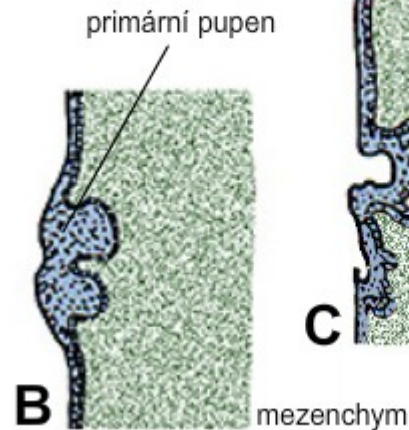
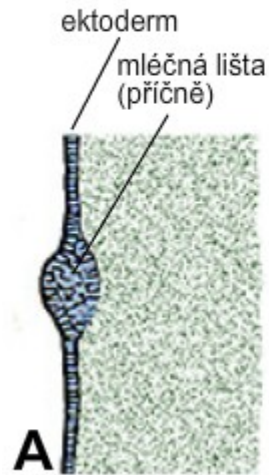
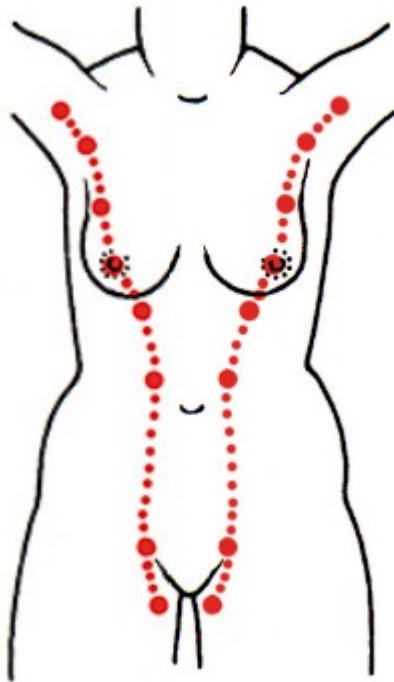
Vývoj epidermis a coria



Vývoj potních žláz



Vývoj mléčné lišty a mléčné žlázy



Vývoj vlasu a mazové žlázy

