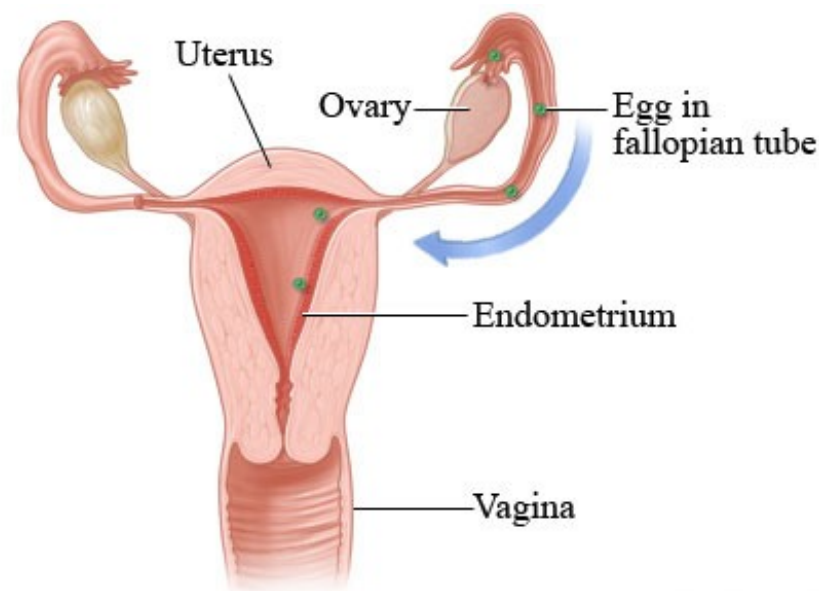




ŽENSKÝ POHLAVNÍ SYSTÉM I

- **vaječník** (ovarium, oophoron)
- **vejcovod** (tuba uterina, tuba Fallopii, salpinx)
- **děloha** (uterus, metra, hystera)



ovarium-člověk

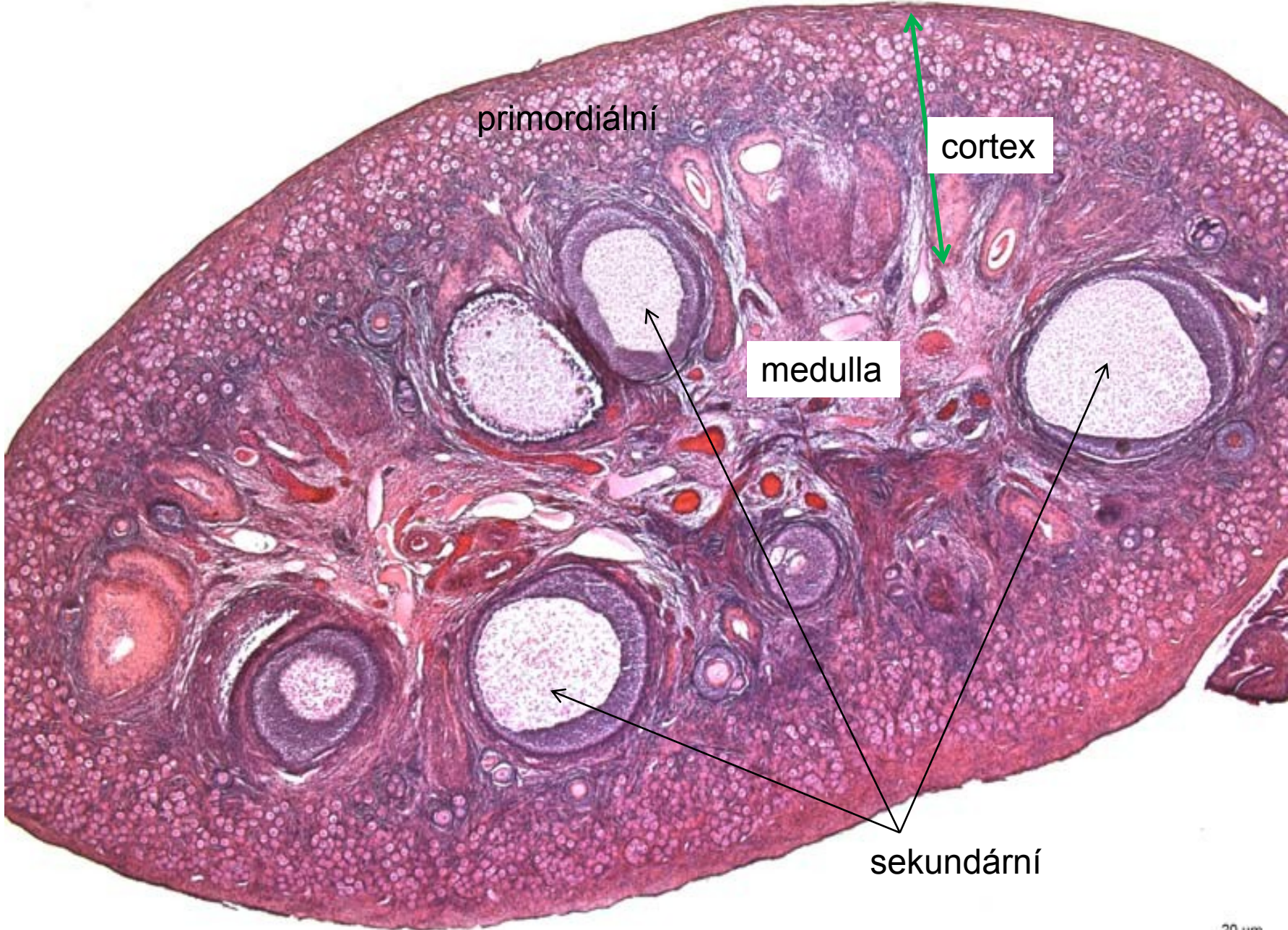


atretický sekundární
folikul

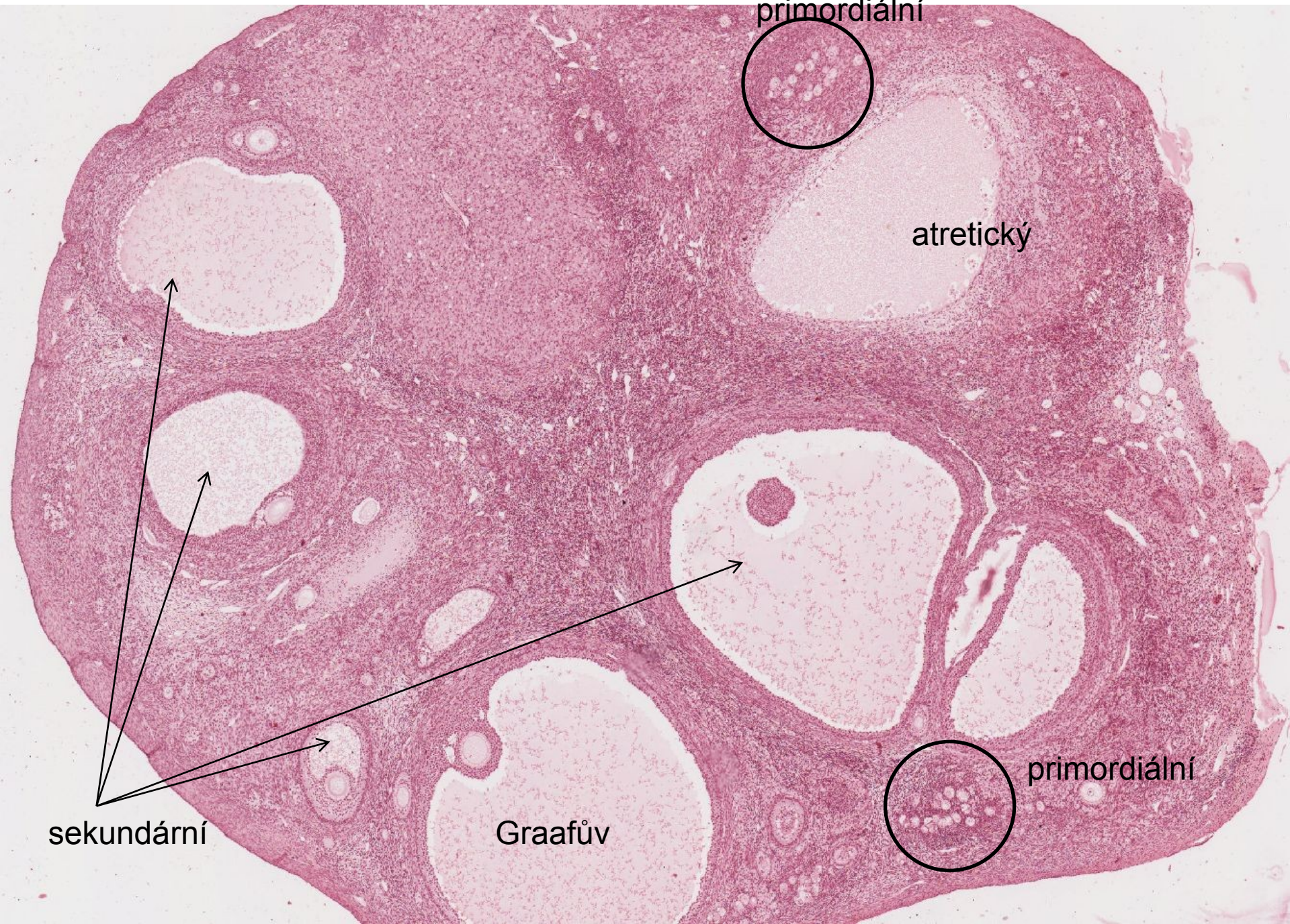
buněčné
vazivo

tunica
albuginea

ovarium-kočka



ovarium-kočka



primordiální

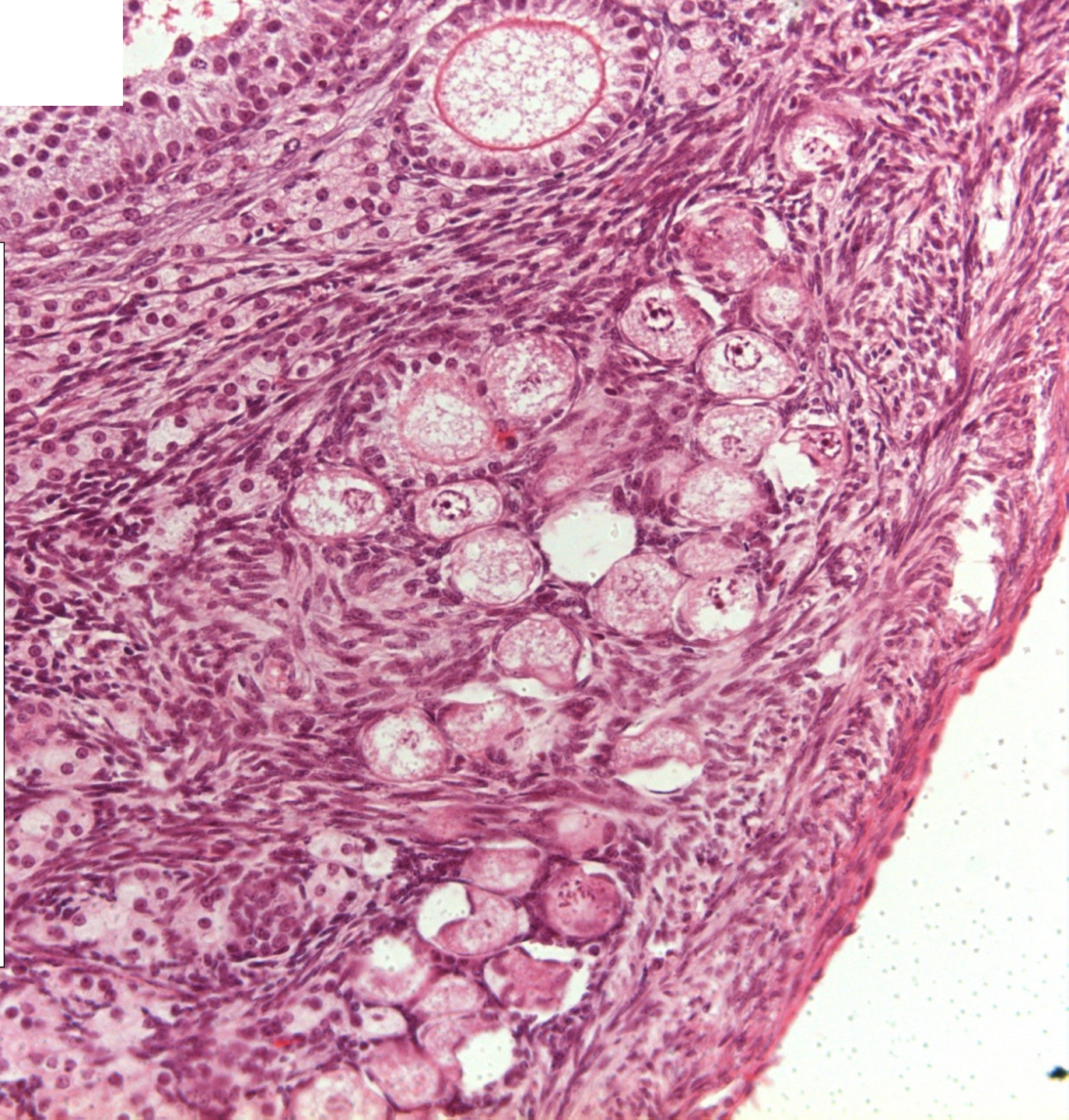
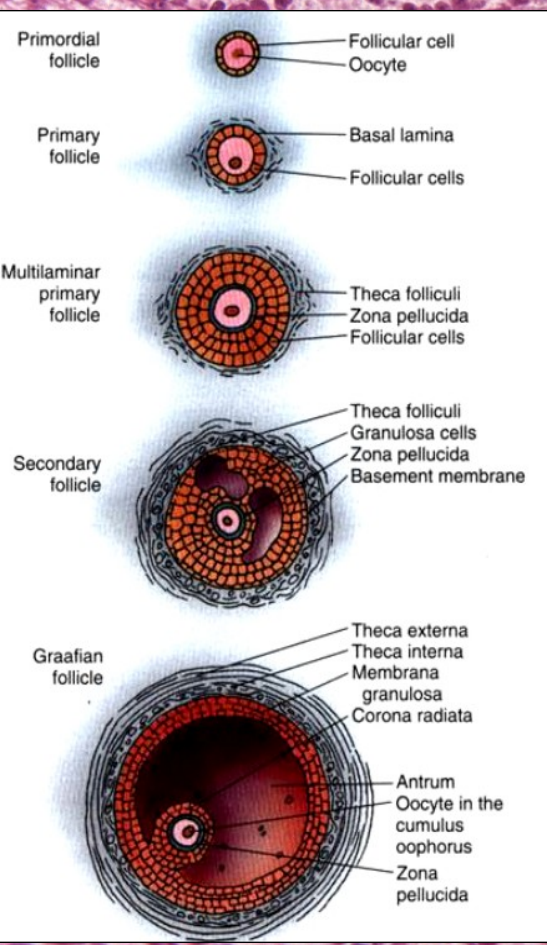
atretický

sekundární

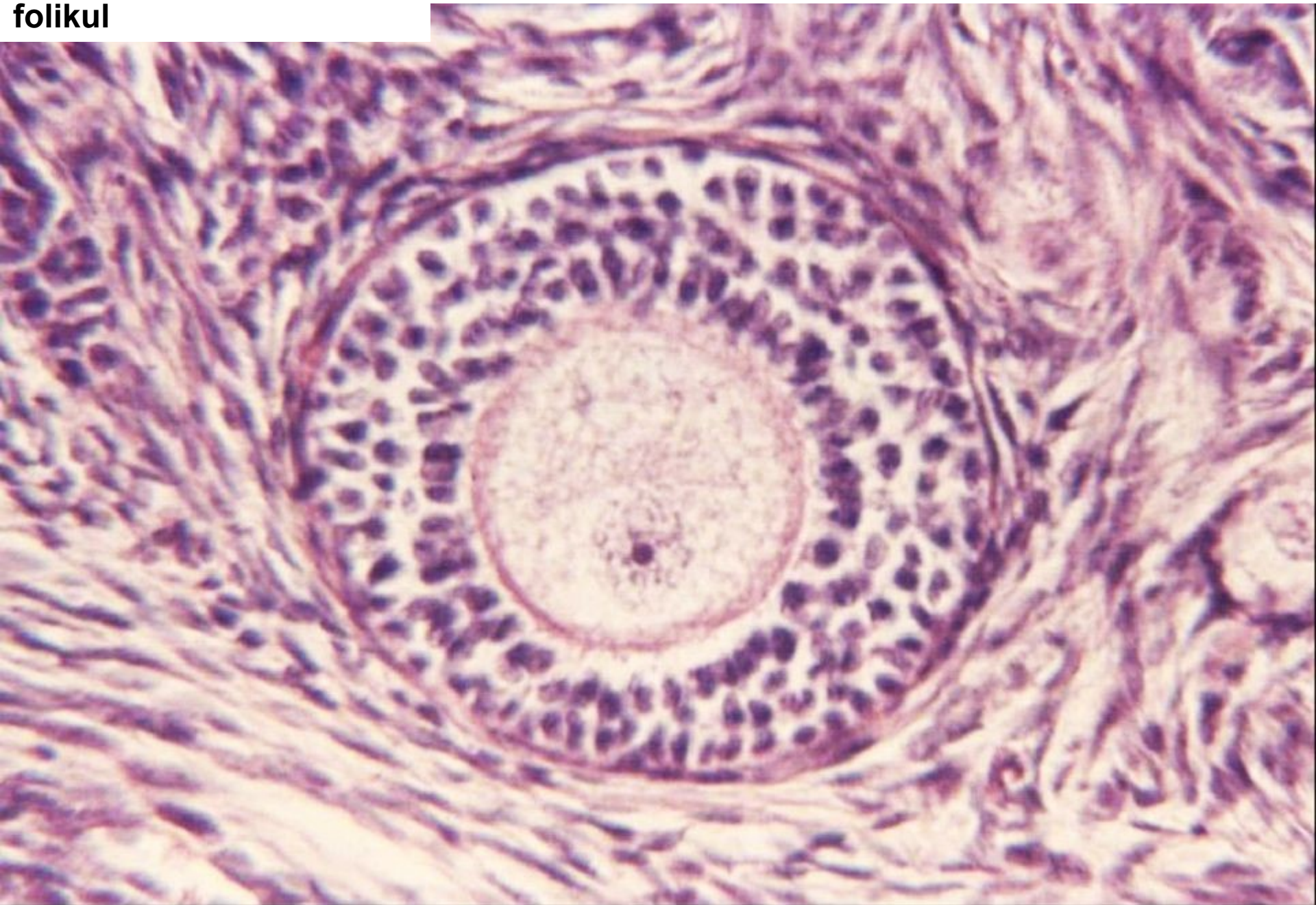
Graafův

primordiální

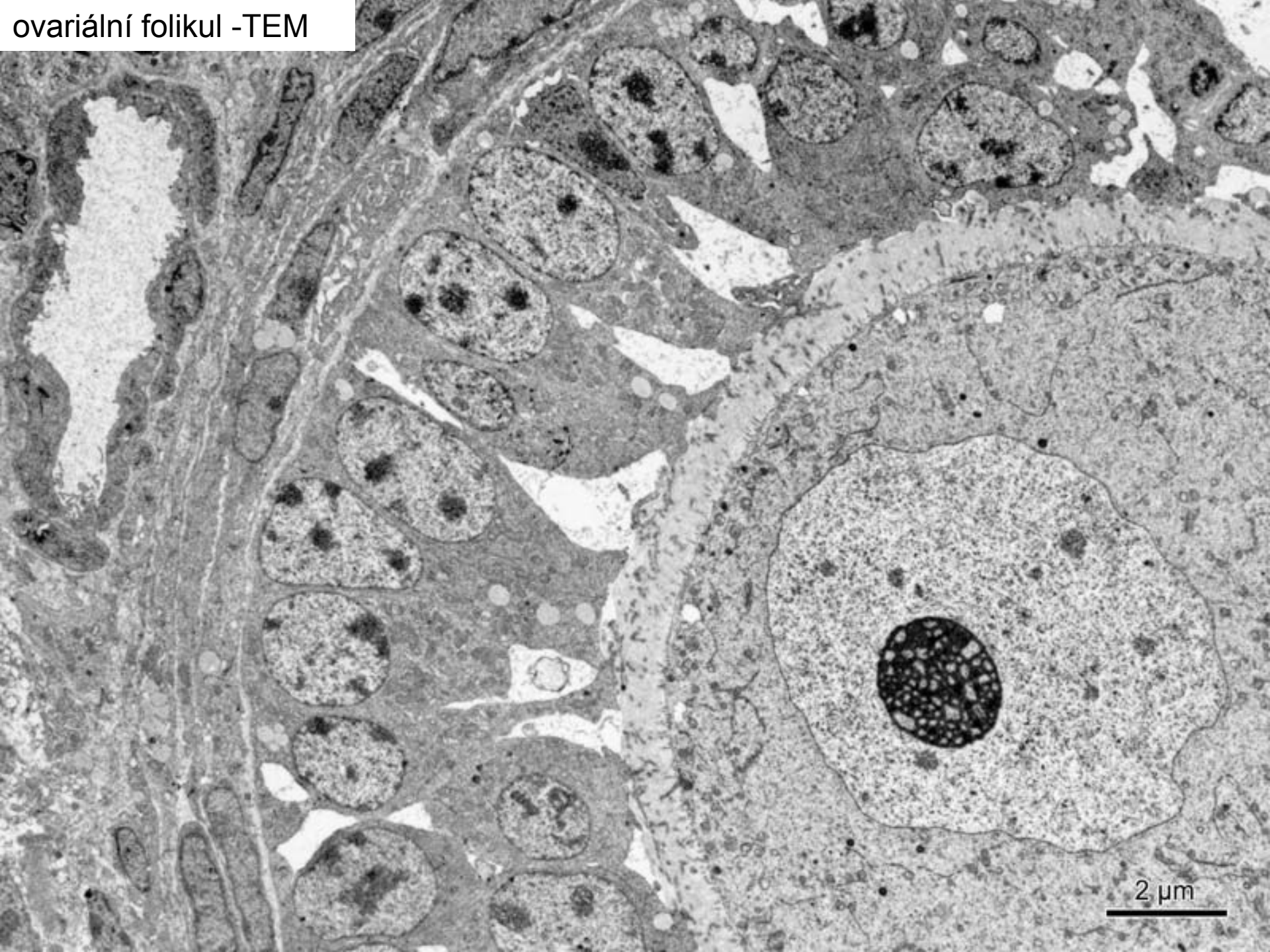
primordiální a primární unilaminární folikuly



**primární multilaminární
folikul**

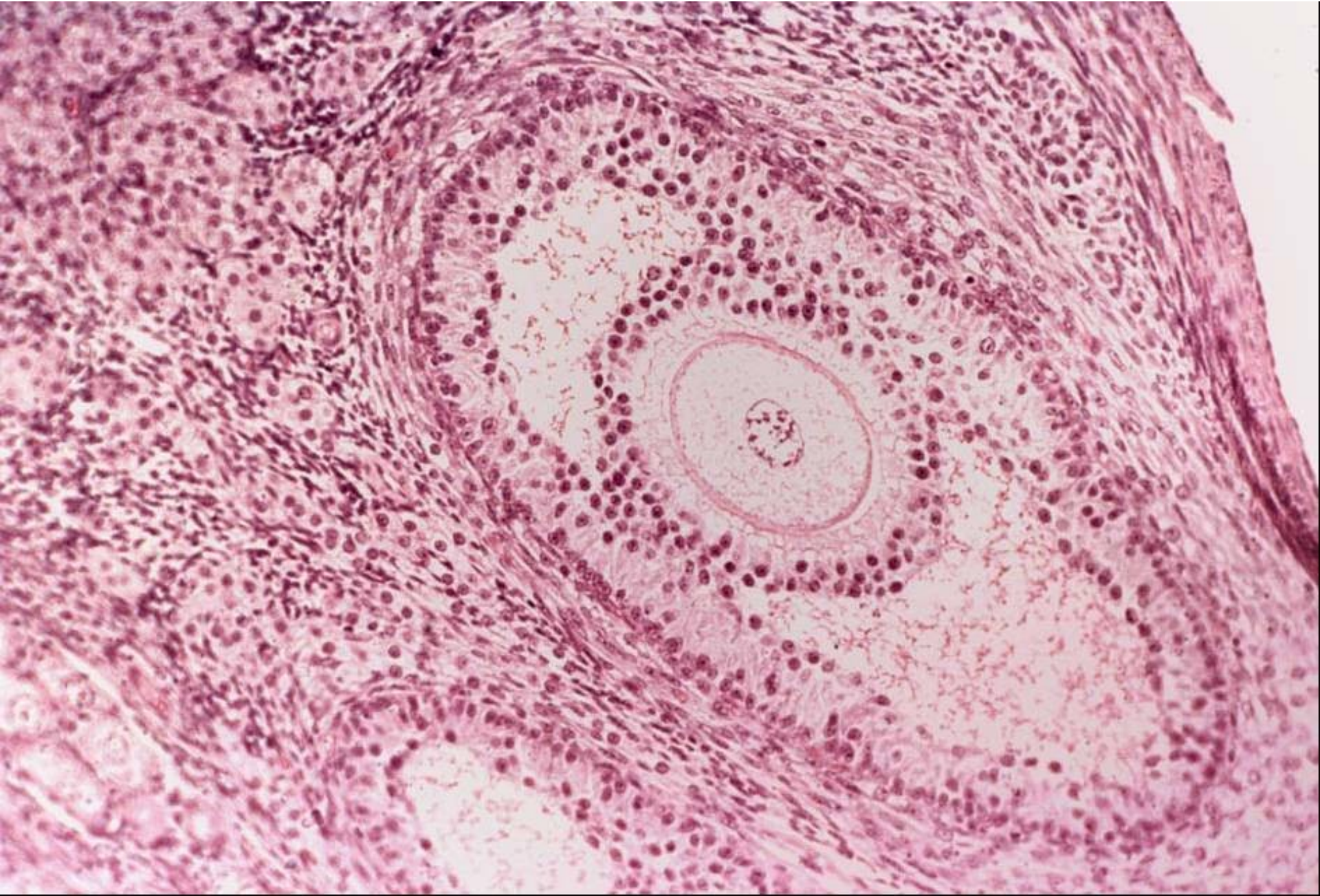


ovariální folikul -TEM

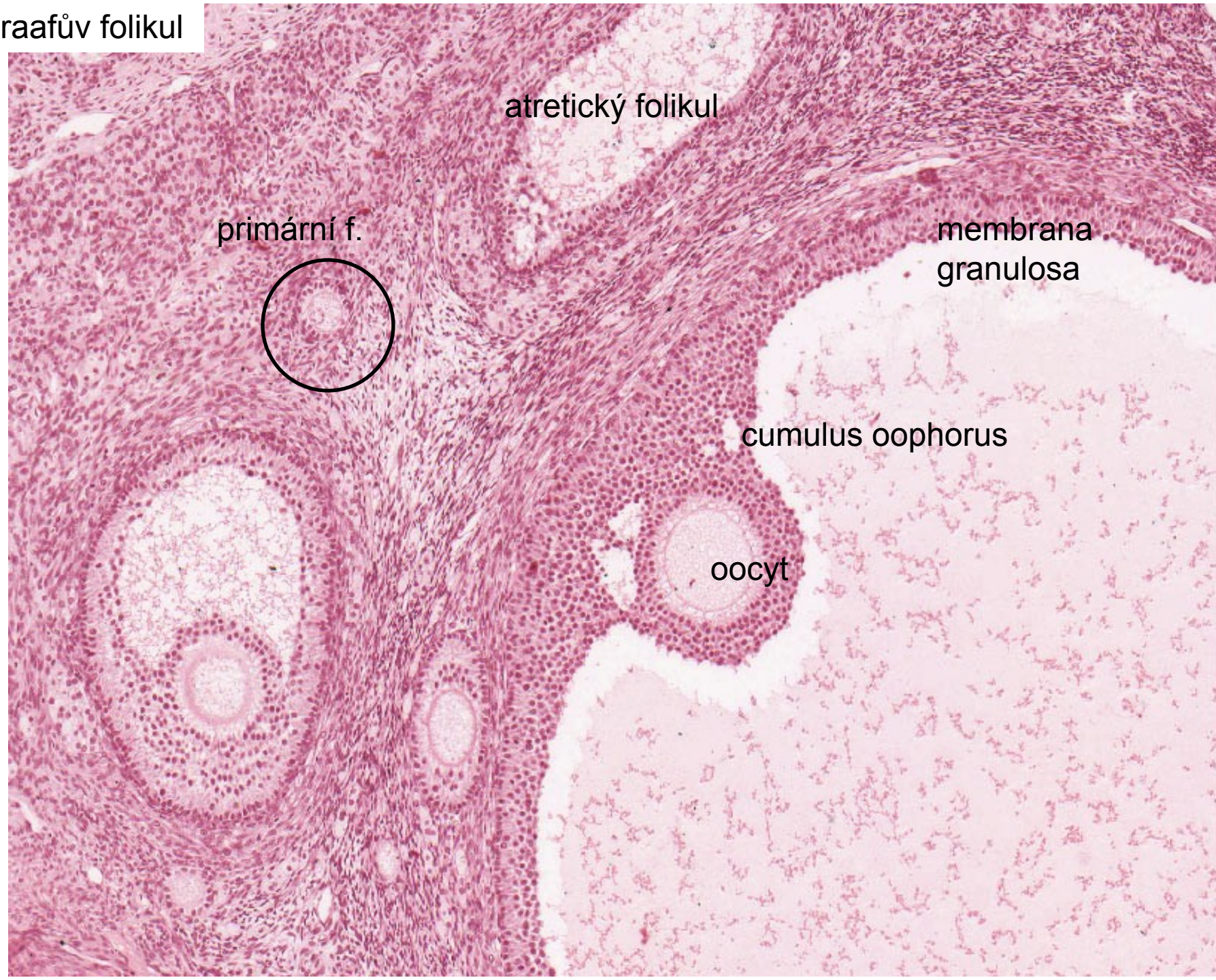


2 μm

sekundární folikul

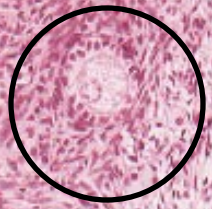


Graafův folikul



atretický folikul

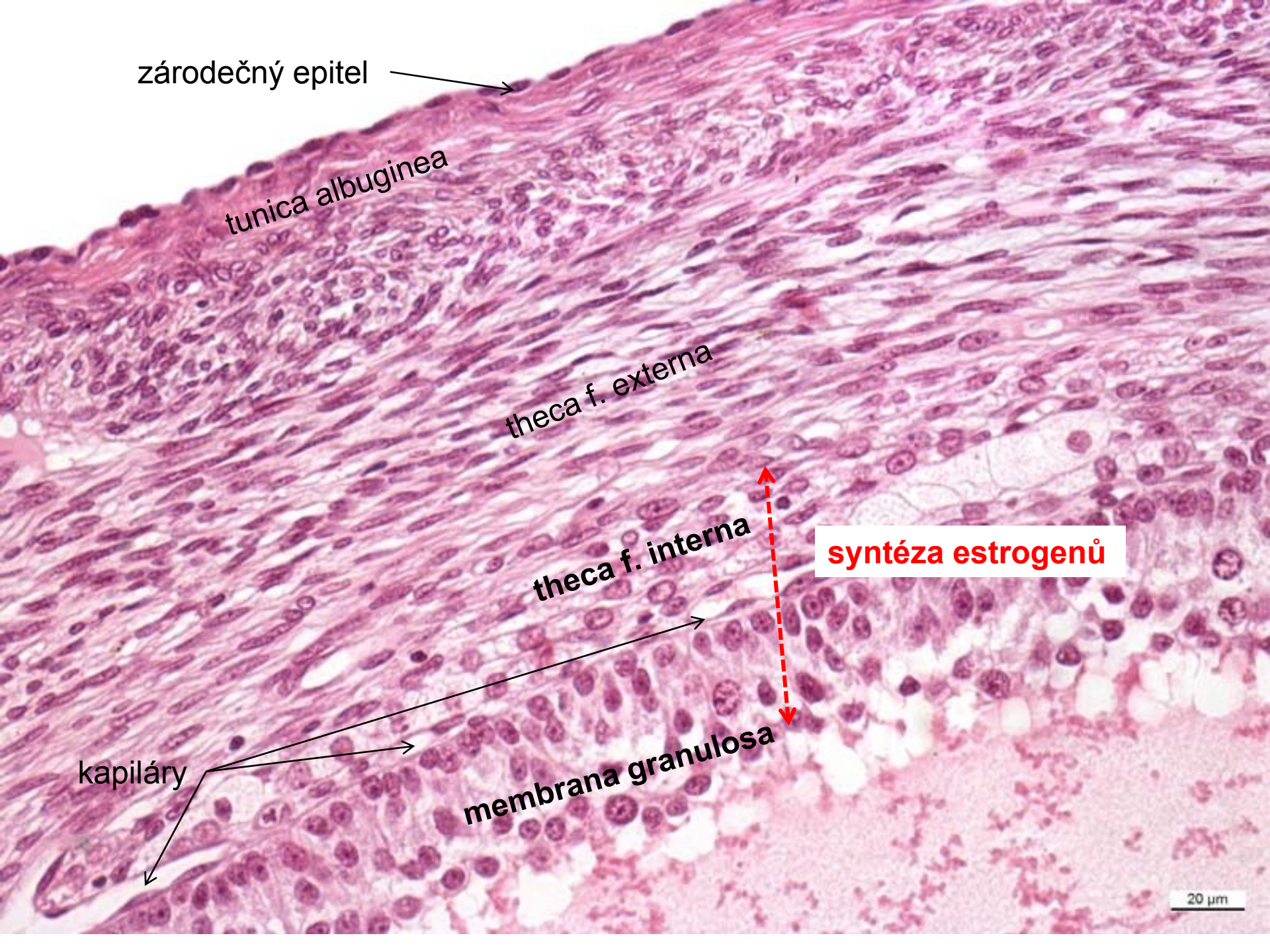
primární f.



membrana granulosa

cumulus oophorus

oocyt



zárudečný epitel

tunica albuginea

theca f. externa

theca f. interna

syntéza estrogenů

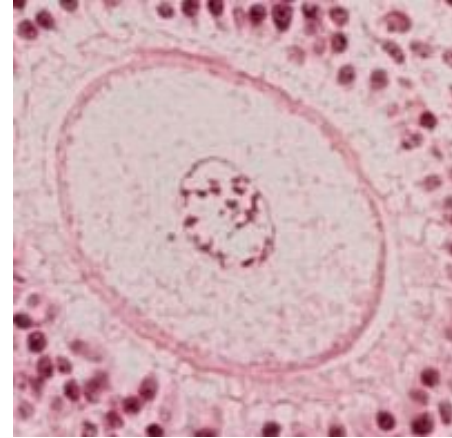
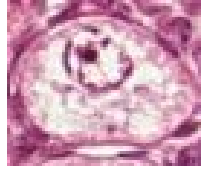
kapiláry

membrana granulosa

20 μm

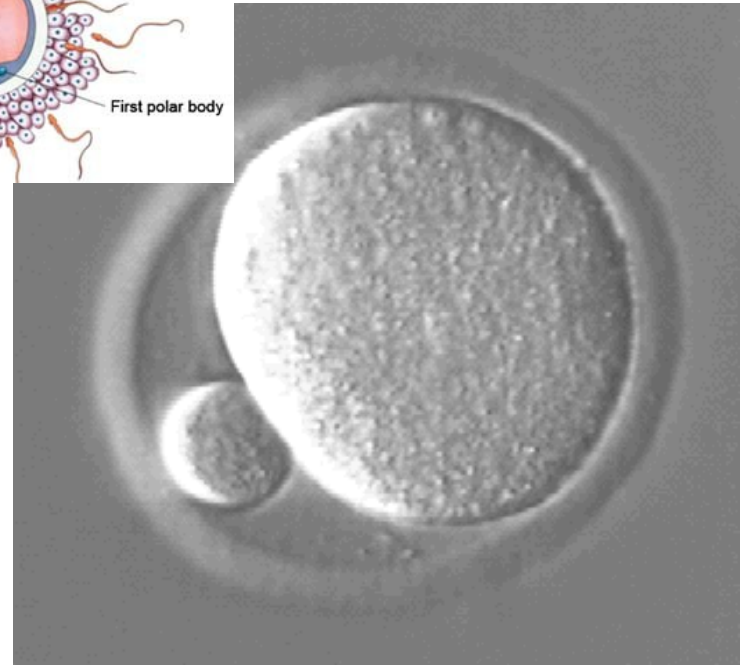
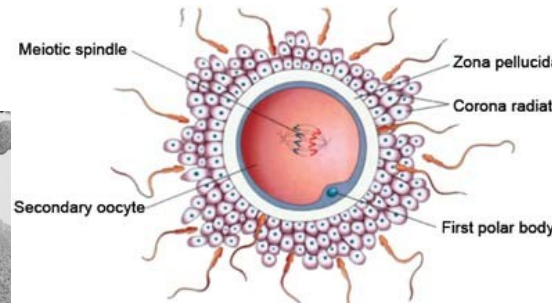
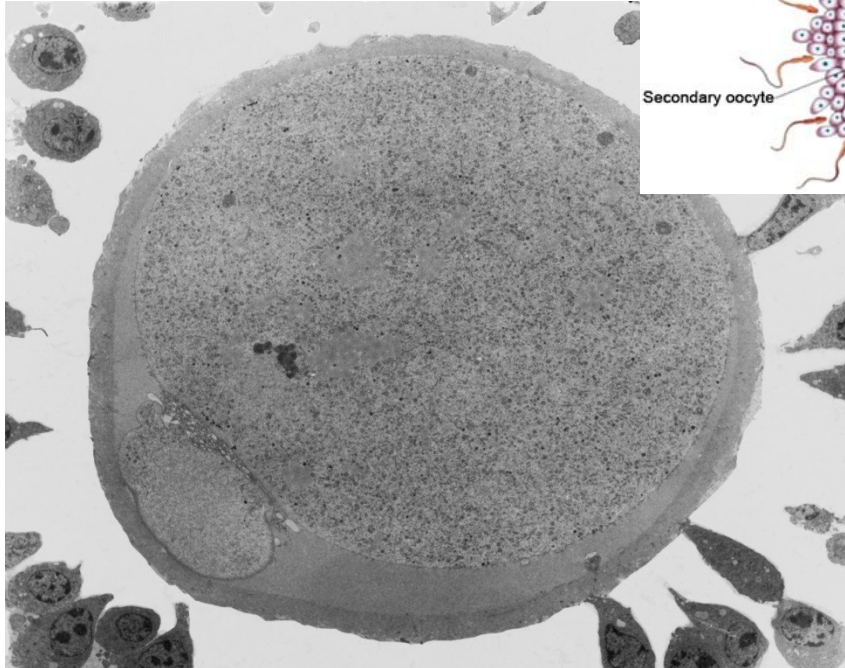
oocyt v průběhu 1. meiotického dělení

30 μm

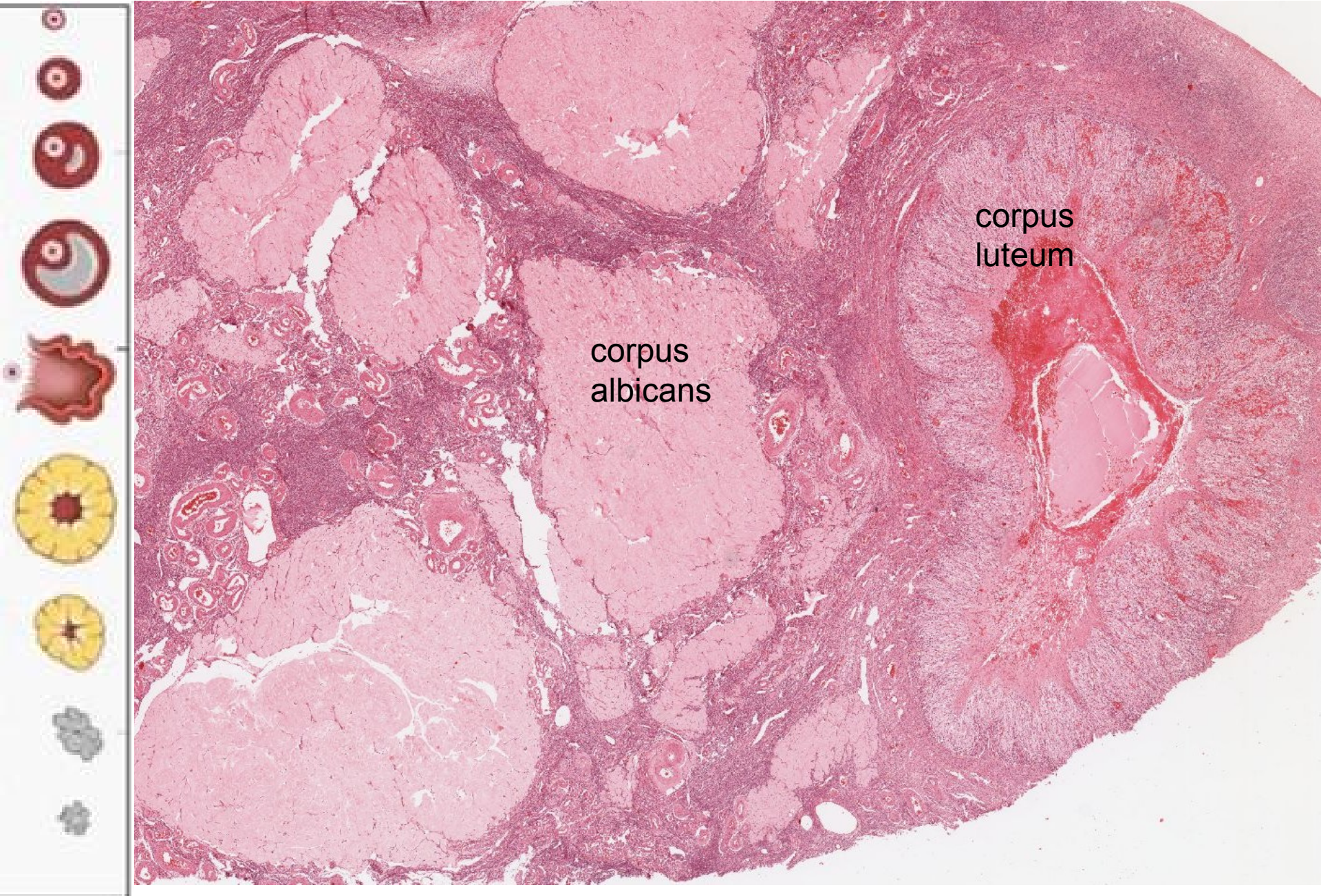


130 μm

oocyt během ovulace



ovarium-corpora luteum



ovarium-corpus luteum

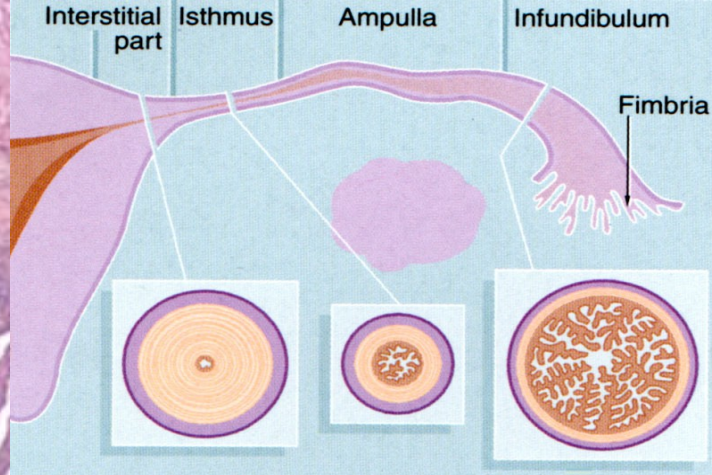


krevní
koagulum

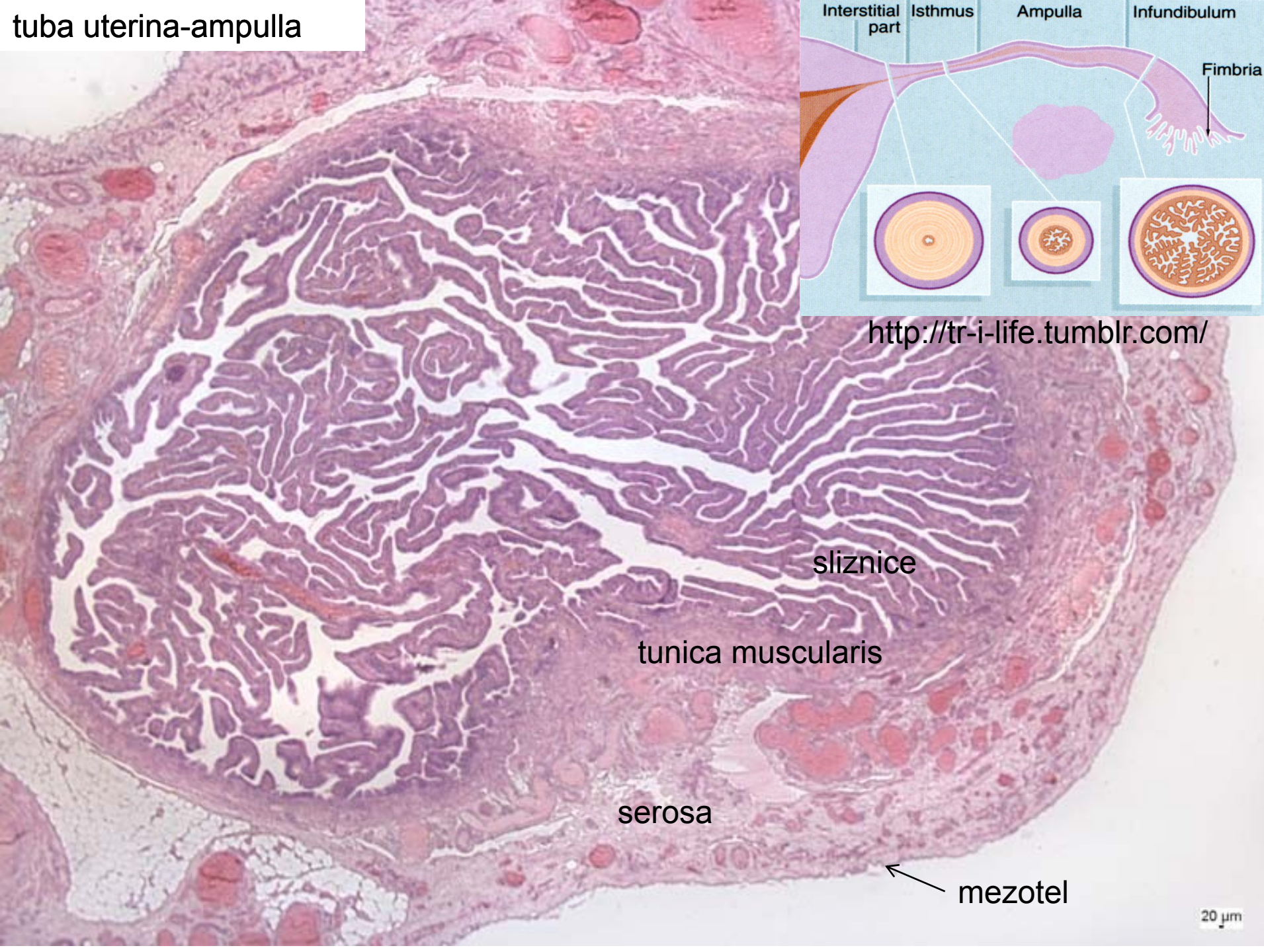
granuloza-
luteinové buňky

theca-luteinové
buňky

tuba uterina-ampulla



<http://tr-i-life.tumblr.com/>



sliznice

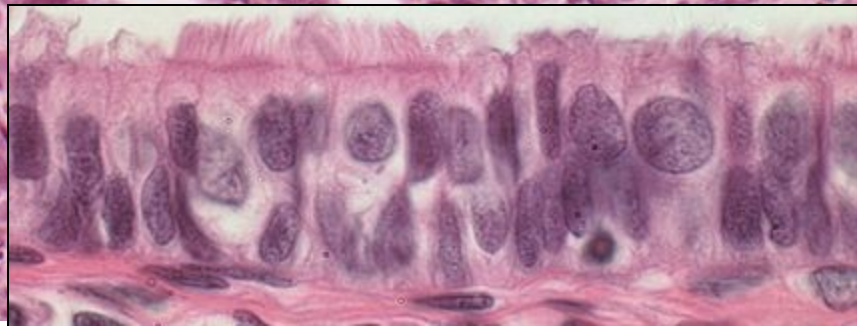
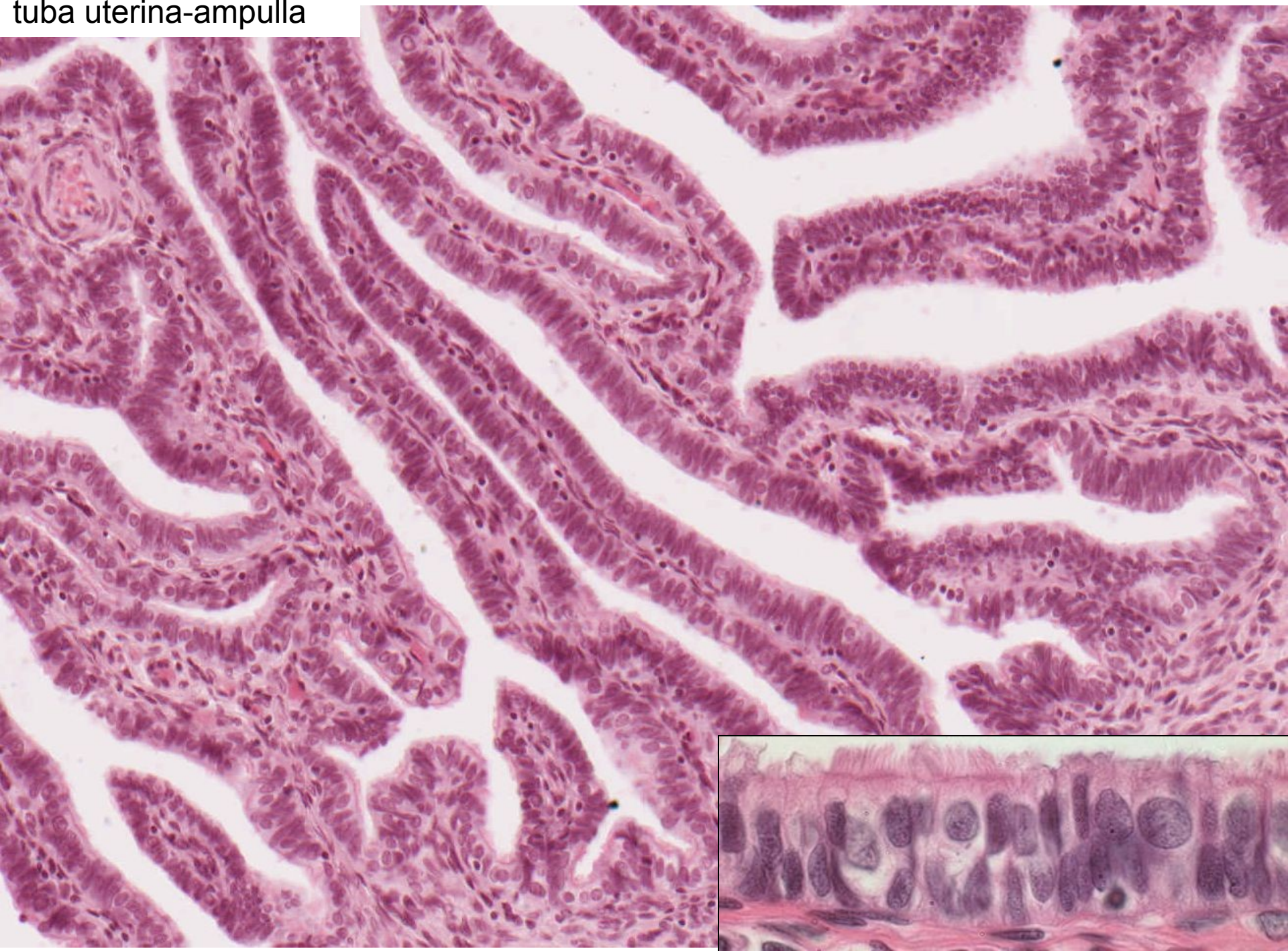
tunica muscularis

serosa

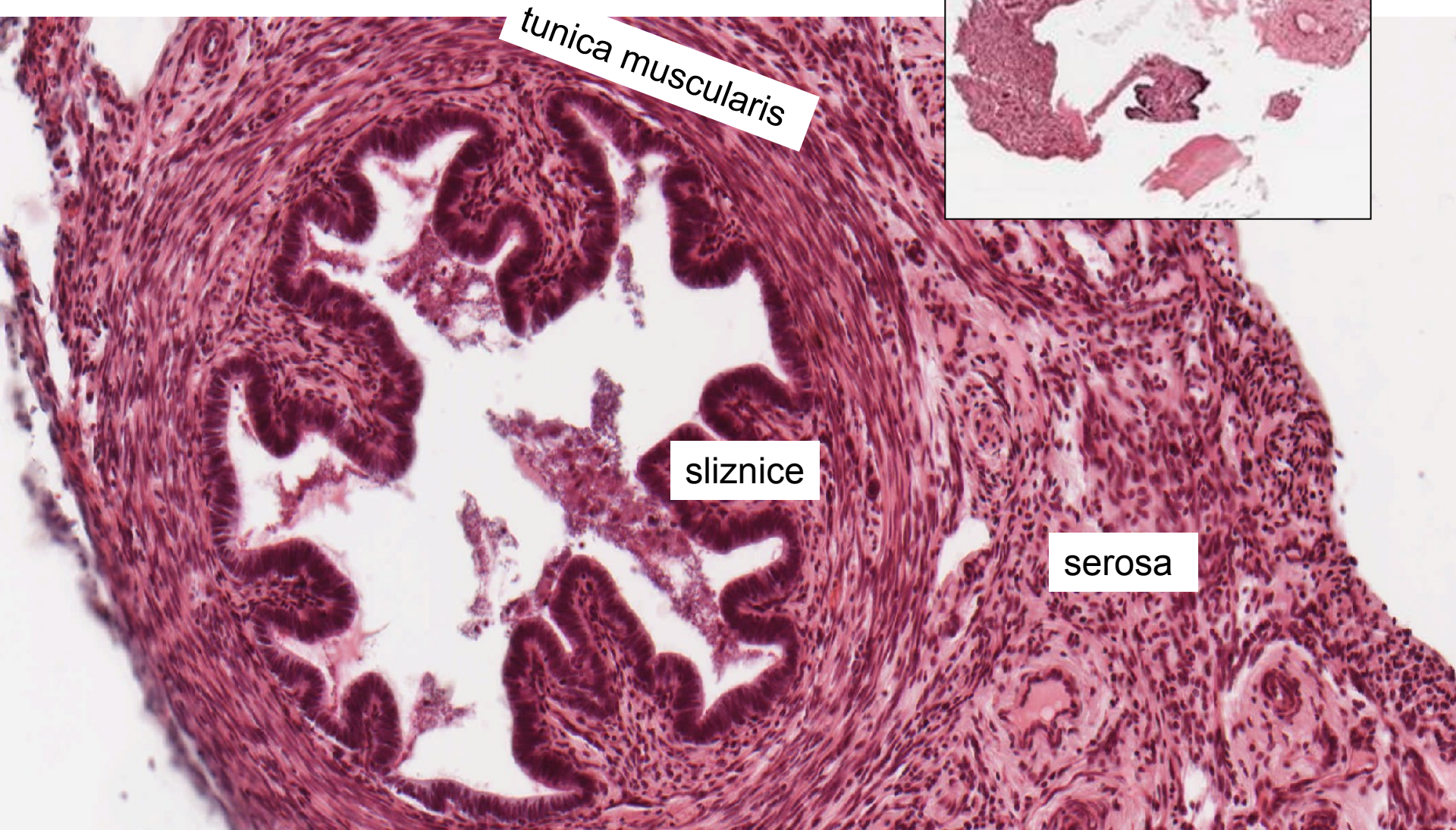
mezotel

20 μm

tuba uterina-ampulla



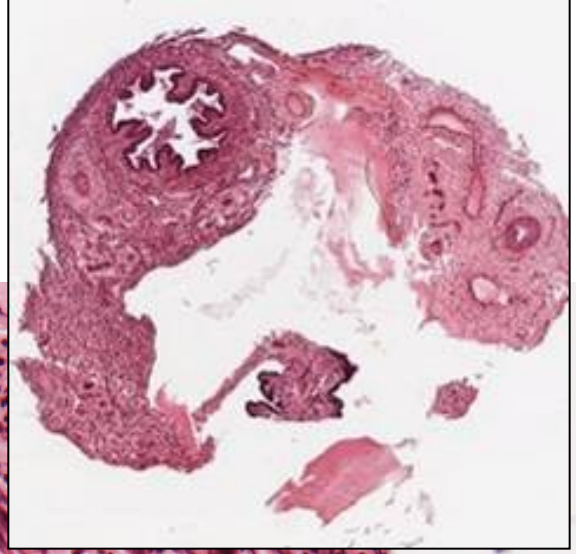
tuba uterina-isthmus

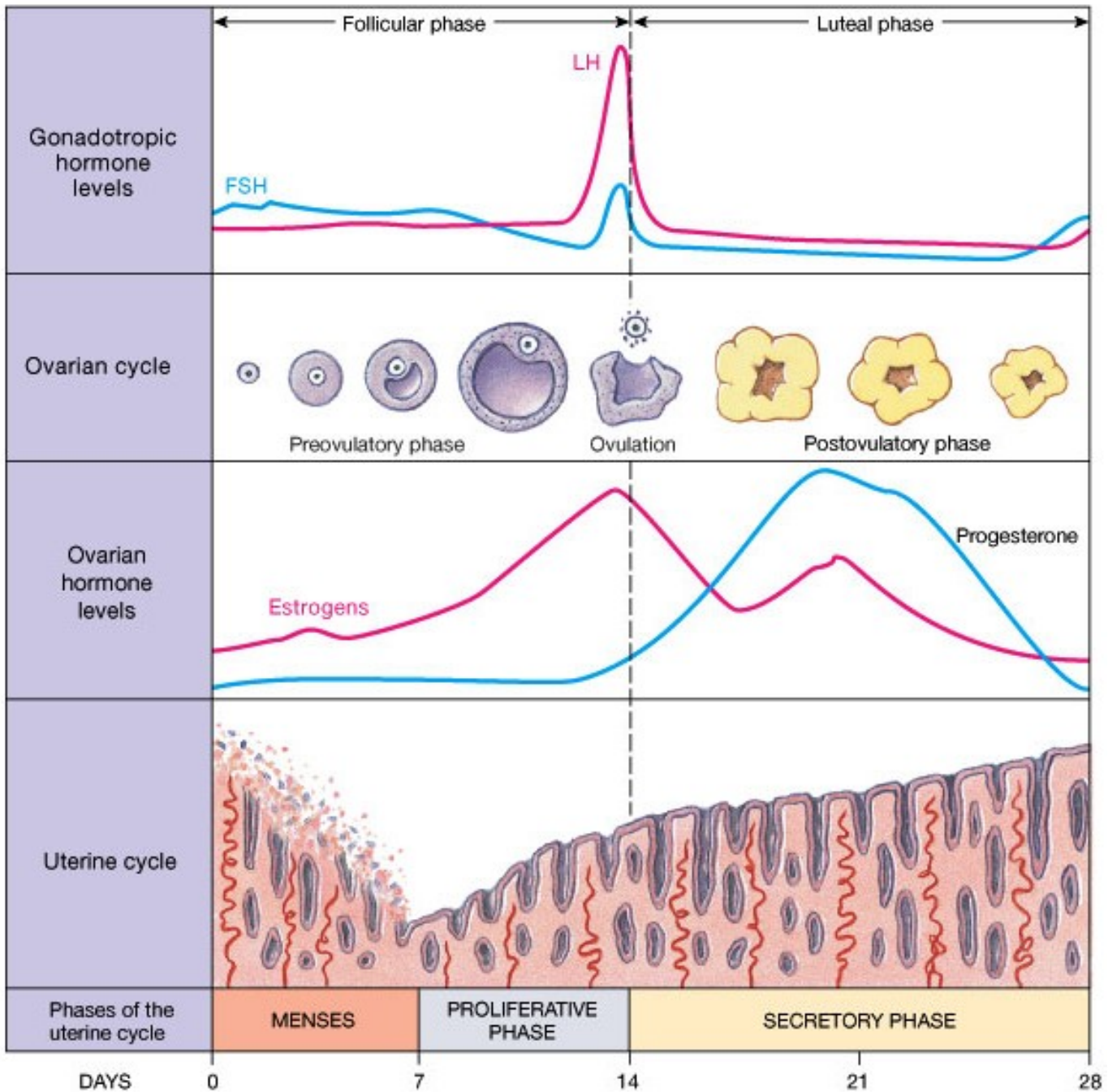


tunica muscularis

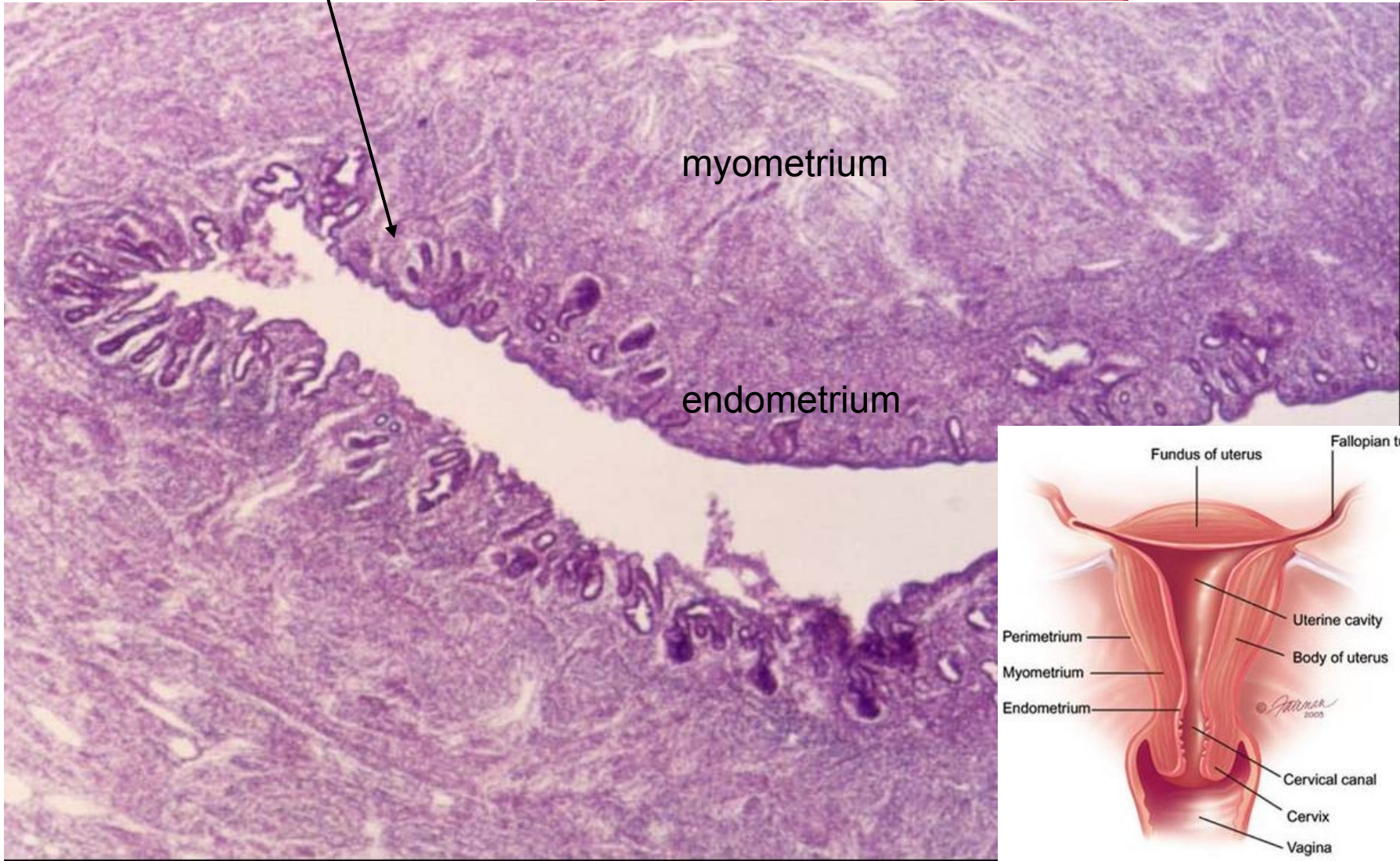
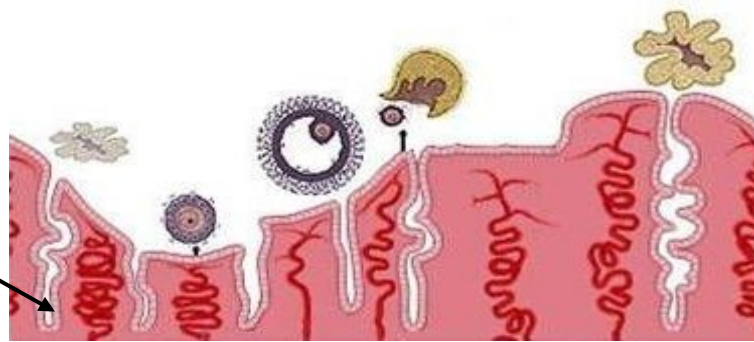
sliznice

serosa



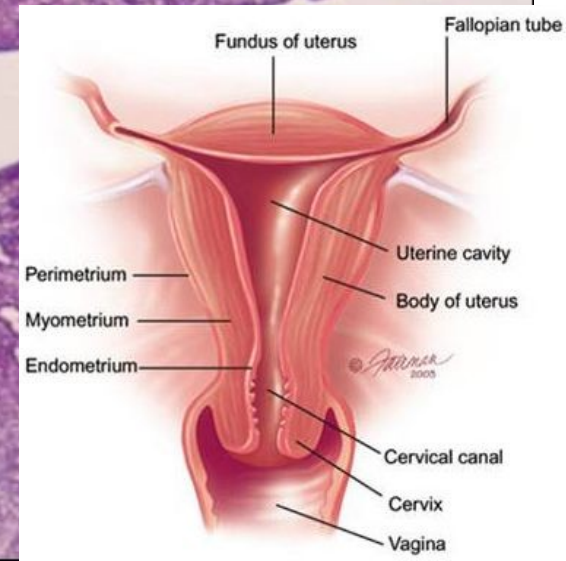


Ovariální a menstruační cyklus



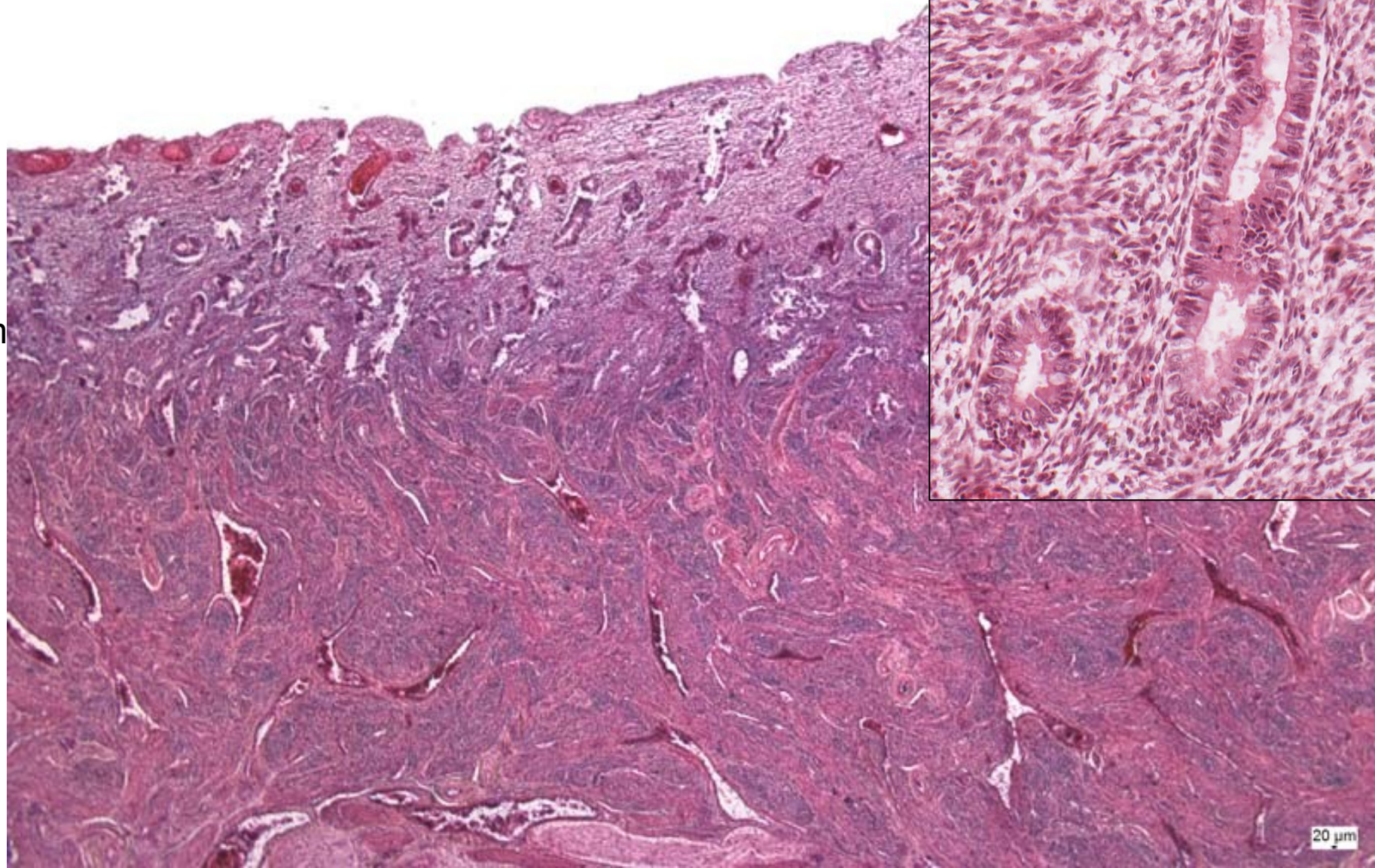
myometrium

endometrium



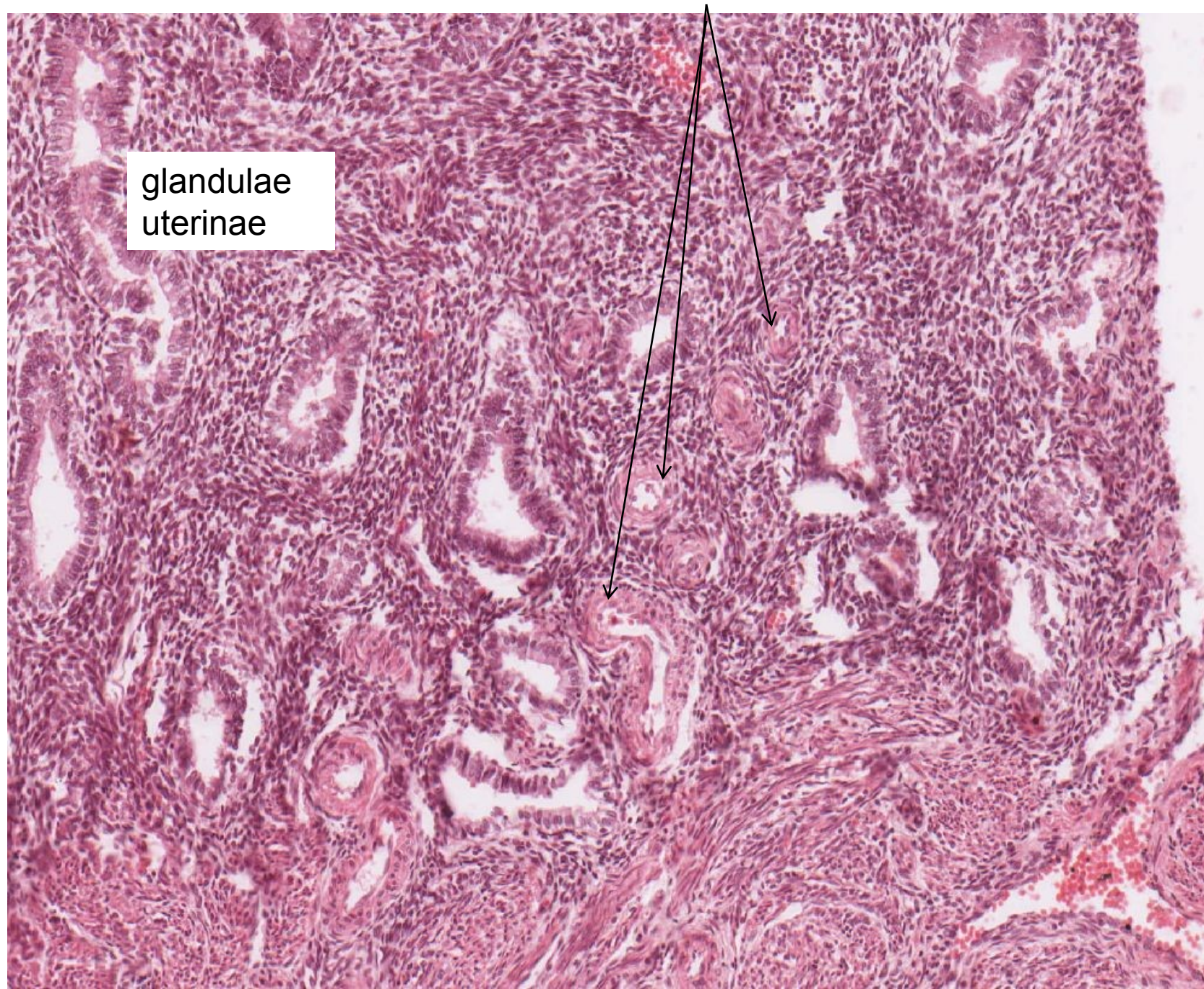
**Endometrium – proliferační fáze
– glandulae uterinae**

3-4
mm



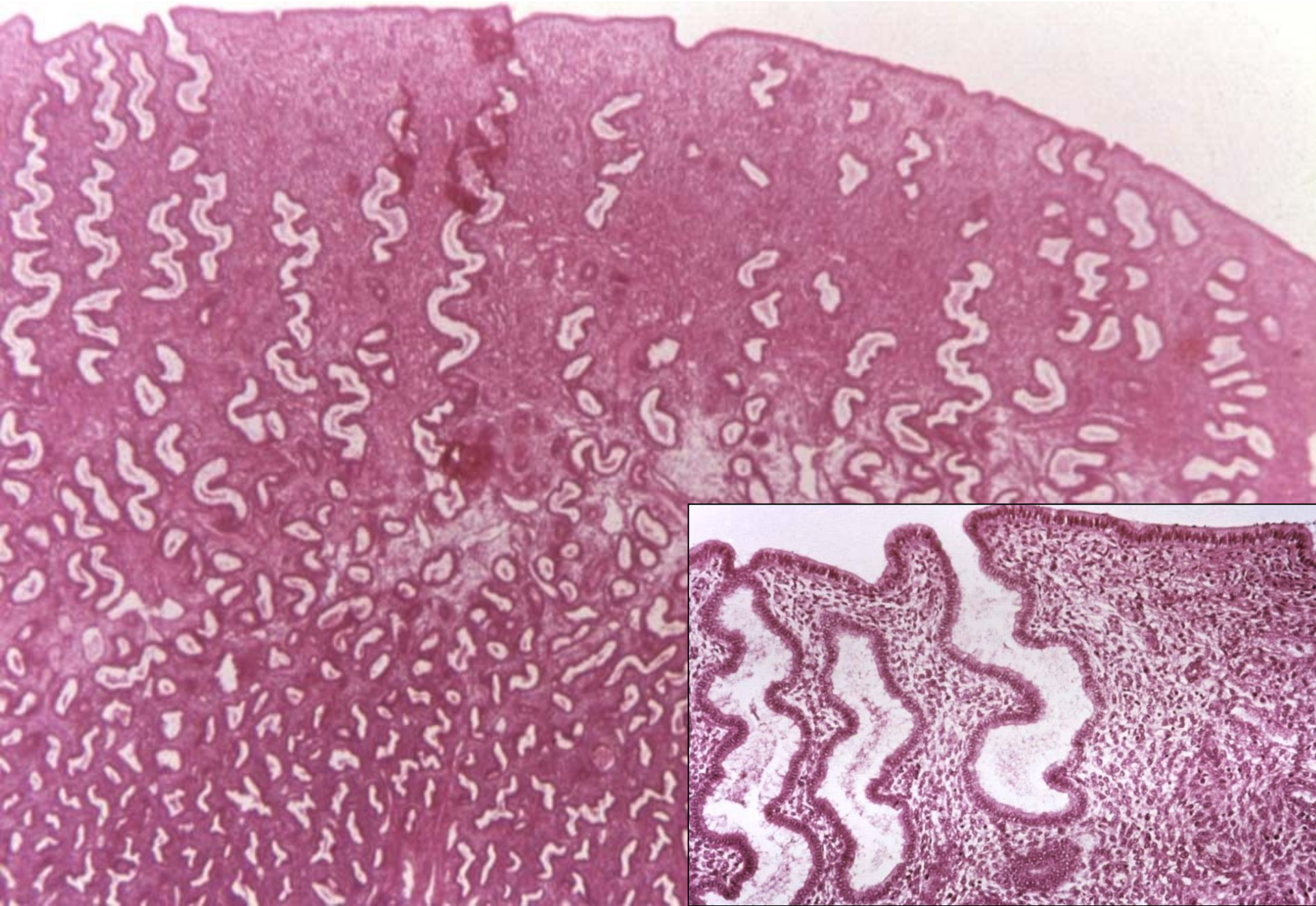
20 μm

Endometrium – proliferační fáze – arteriae helicinae, buněčné vazivo



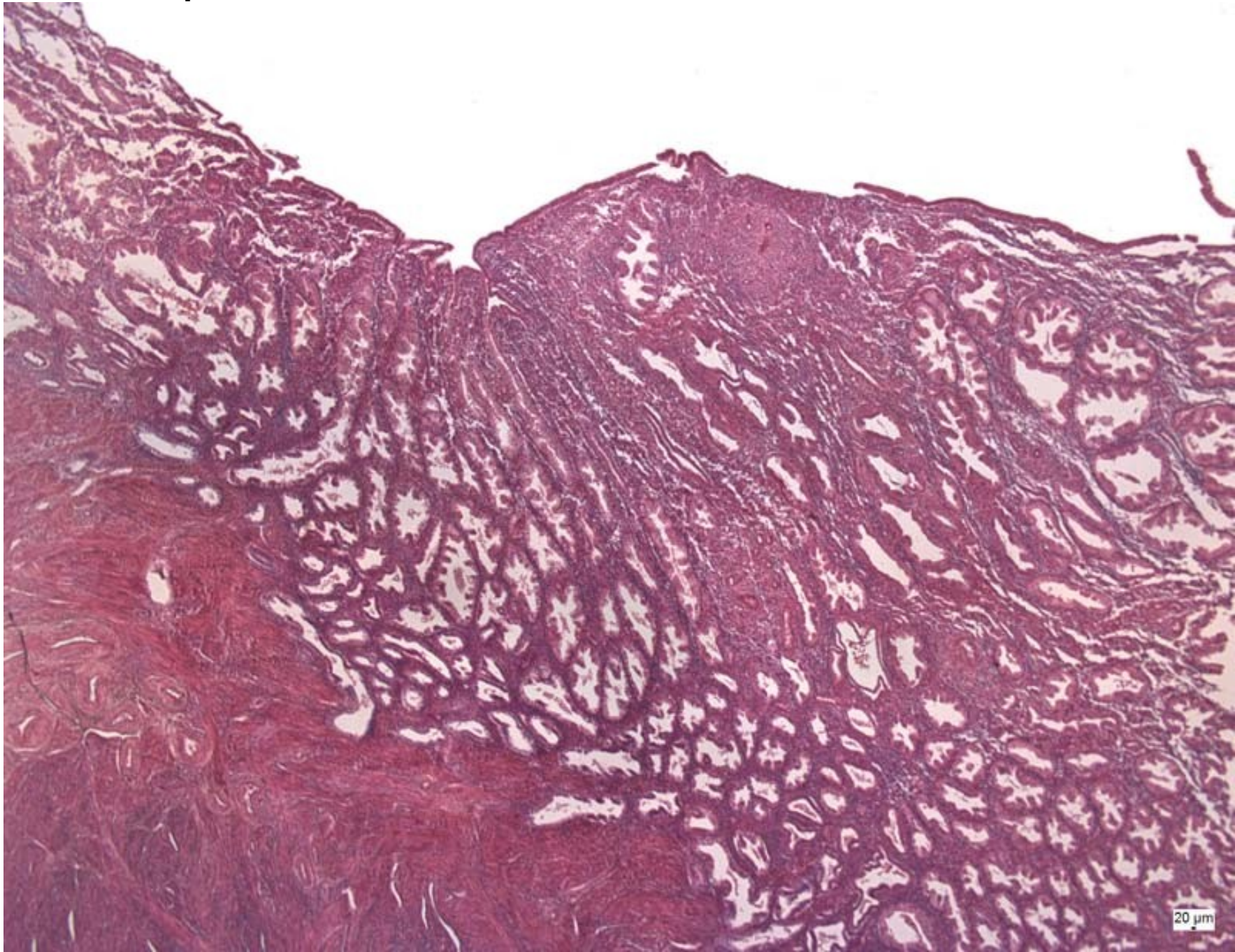
glandulae
uterinae

Endometrium – začátek sekreční fáze

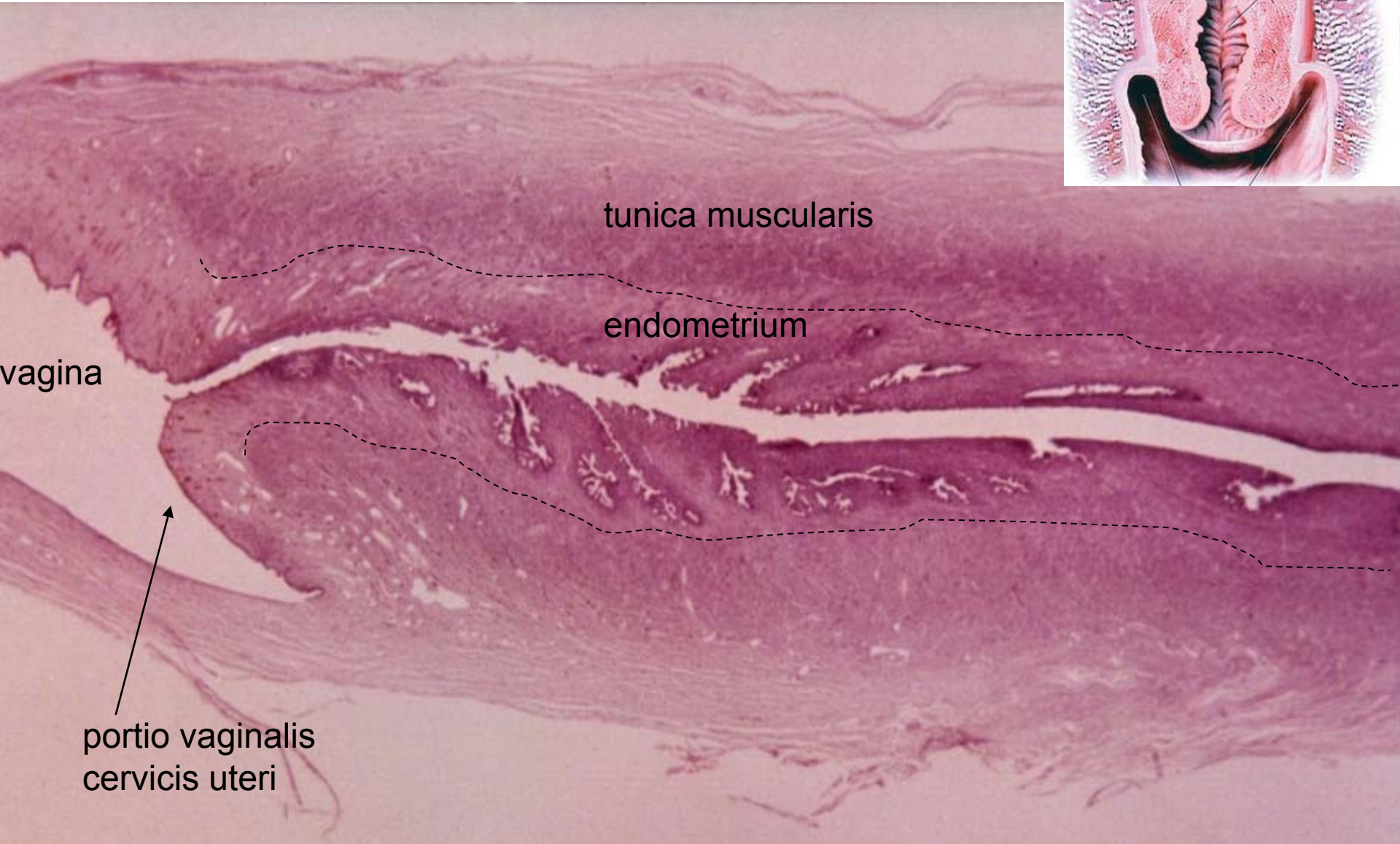
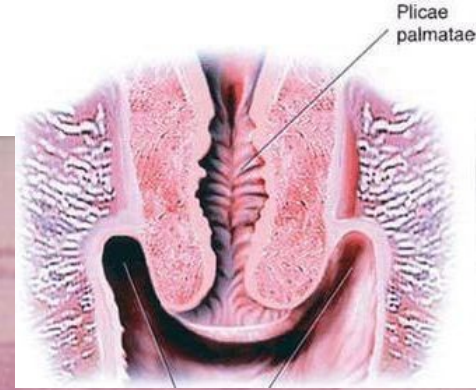


Endometrium – pokročilá sekreční fáze

5-7
mm



Cervix uteri



glandulae cervicales – cervikální hlen

Portio vaginalis cervicis uteri - přechod epitelů

jednovrst.cyl.epi (endocervix)

vrst.dlažd.epi (ektocervix)





ŽENSKÝ POHLAVNÍ SYSTÉM I

Preparáty:

- 42. Ovarium
- 43. Ovarium – kočka
- 44. Corpus luteum
- 45. Tuba uterina – ampulla
- 46. Tuba uterina – isthmus
- 47. Uterus – proliferativní fáze
- 48. Uterus – sekreční fáze

Atlas EM:

- Lidský primární ovariální folikul (72)
- Od gamet k časnému embryu (74)