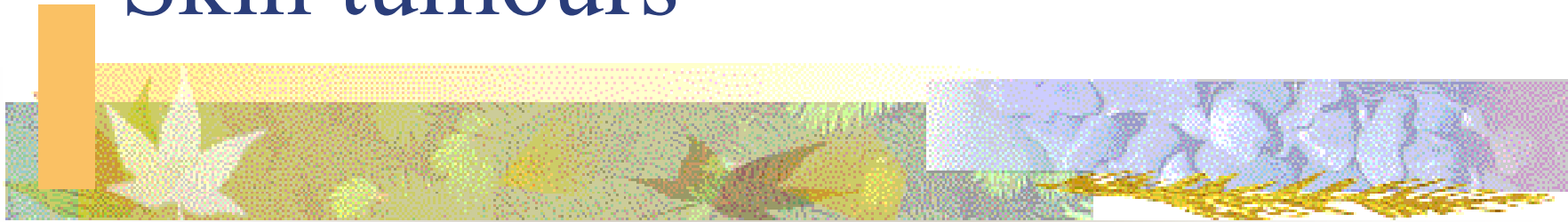


Skin tumours



Hana Jedličková

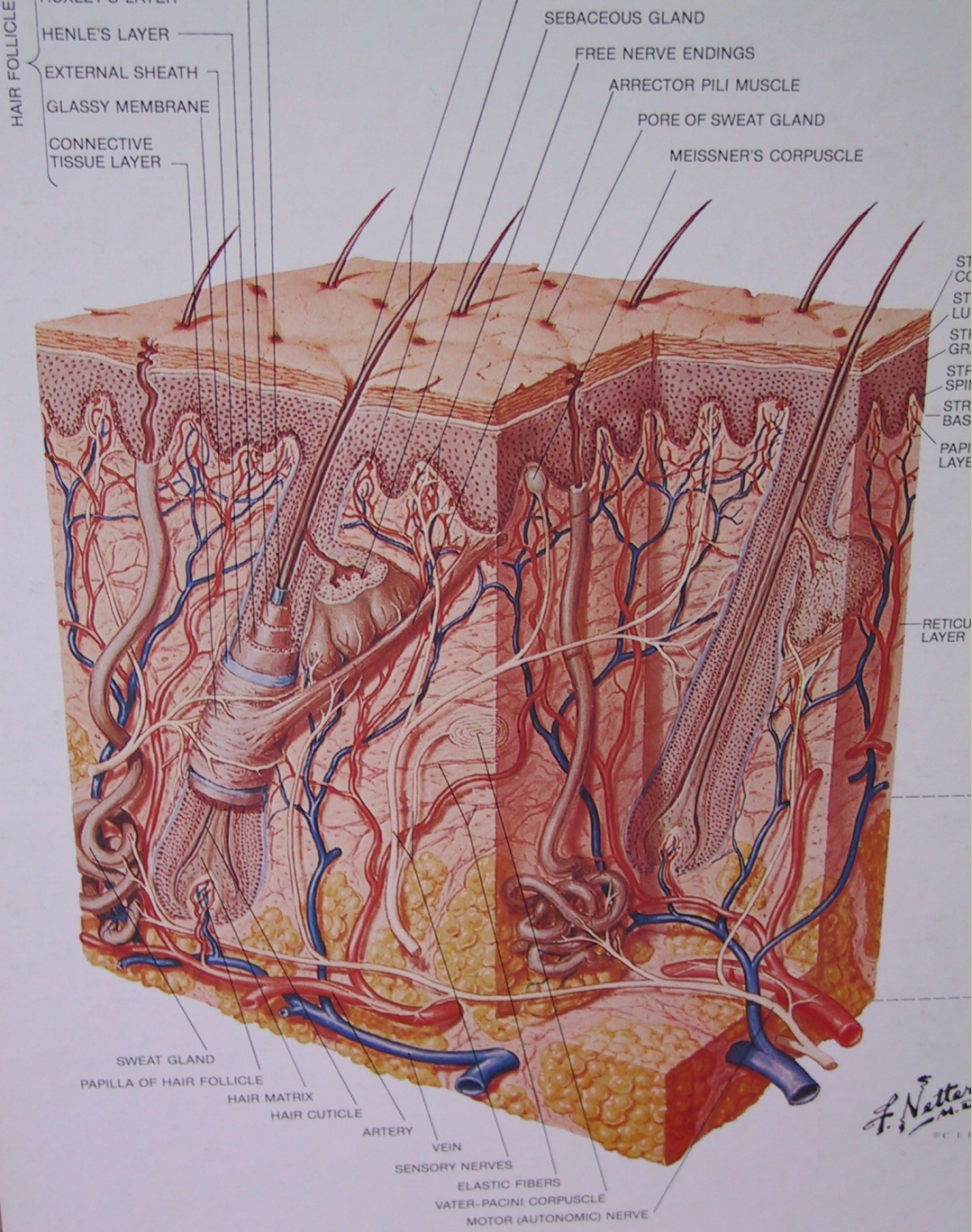
I. Dept. dermatovenereology

St. Anna University Hospital



Skin tumours

- Malignant
- Benign
- Nevi
- Cysts, warts, scars



HAIR FOLLICLE

HENLE'S LAYER
EXTERNAL SHEATH
GLASSY MEMBRANE
CONNECTIVE TISSUE LAYER

SEBACEOUS GLAND
FREE NERVE ENDINGS
ARRECTOR PILI MUSCLE
PORE OF SWEAT GLAND
MEISSNER'S CORPUSCLE

ST
CC
ST
LU
ST
GR
STF
SPII
STR
BAS
PAPI
LAYE

RETICU
LAYER

SWEAT GLAND
PAPILLA OF HAIR FOLLICLE
HAIR MATRIX
HAIR CUTICLE
ARTERY
VEIN
SENSORY NERVES
ELASTIC FIBERS
VATER-PACINI CORPUSCLE
MOTOR (AUTONOMIC) NERVE

F. Netter
M.D.



Malignant tumours - epithelial

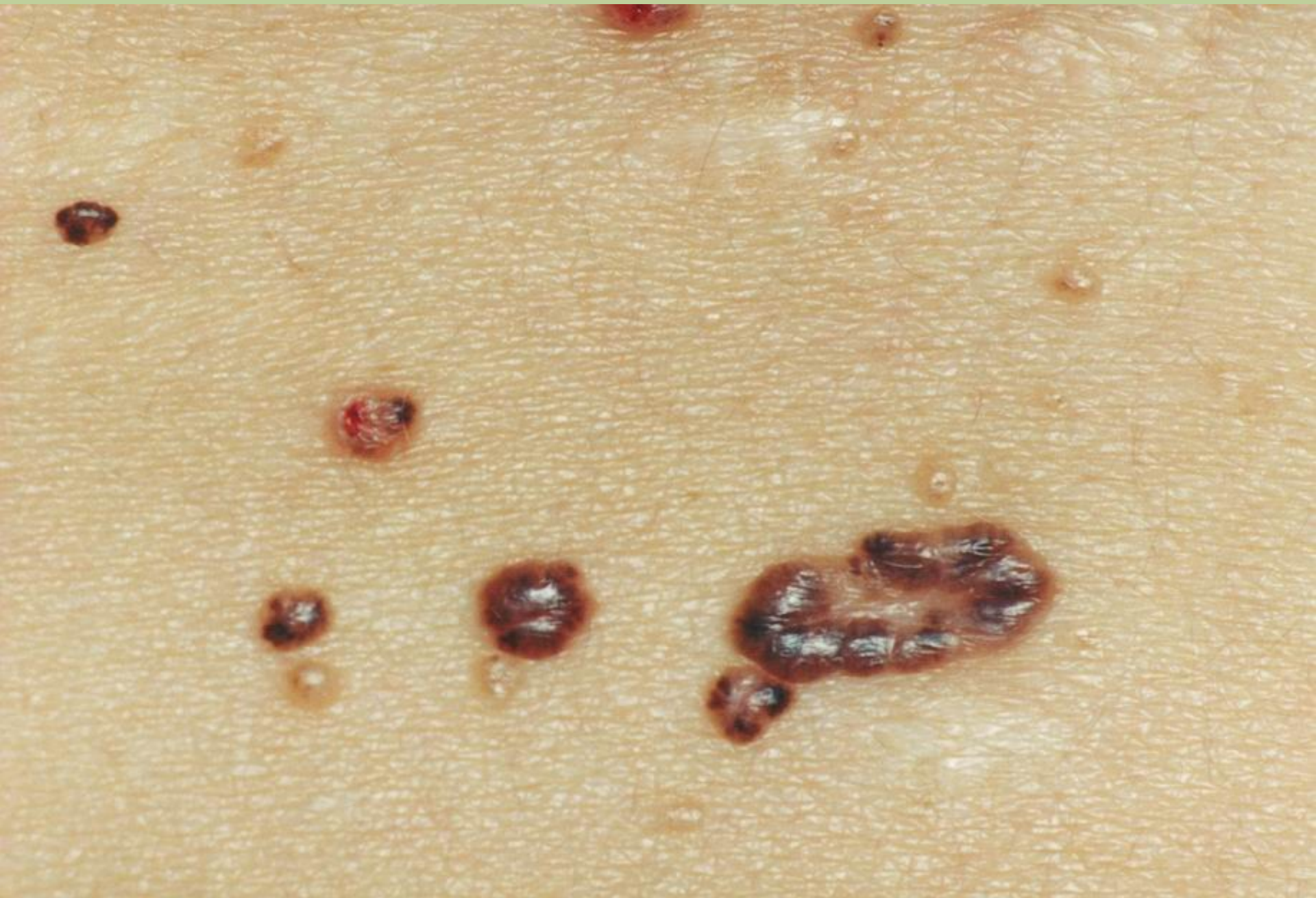
- Basal cell carcinoma
- Squamous cell carcinoma
- Actinic keratoses, cornu cutaneum
- Morbus Bowen
- Keratoacanthoma
- Morbus Paget



Basal cell carcinoma

- Hereditary - Gorlin syndrome
- Long term UV exposition – actinic damage
UVB (UVA)
- Sun exposed areas - face











Squamous cell carcinoma

- Actinic damage – face, scalp, dorsal aspects of the hands
- Chronic wounds – ulcers, ca in lupo
- Chronic dermatoses – lichen verrucosus
- Therapy side-effects – rtg, arsen, UV, cytostatics

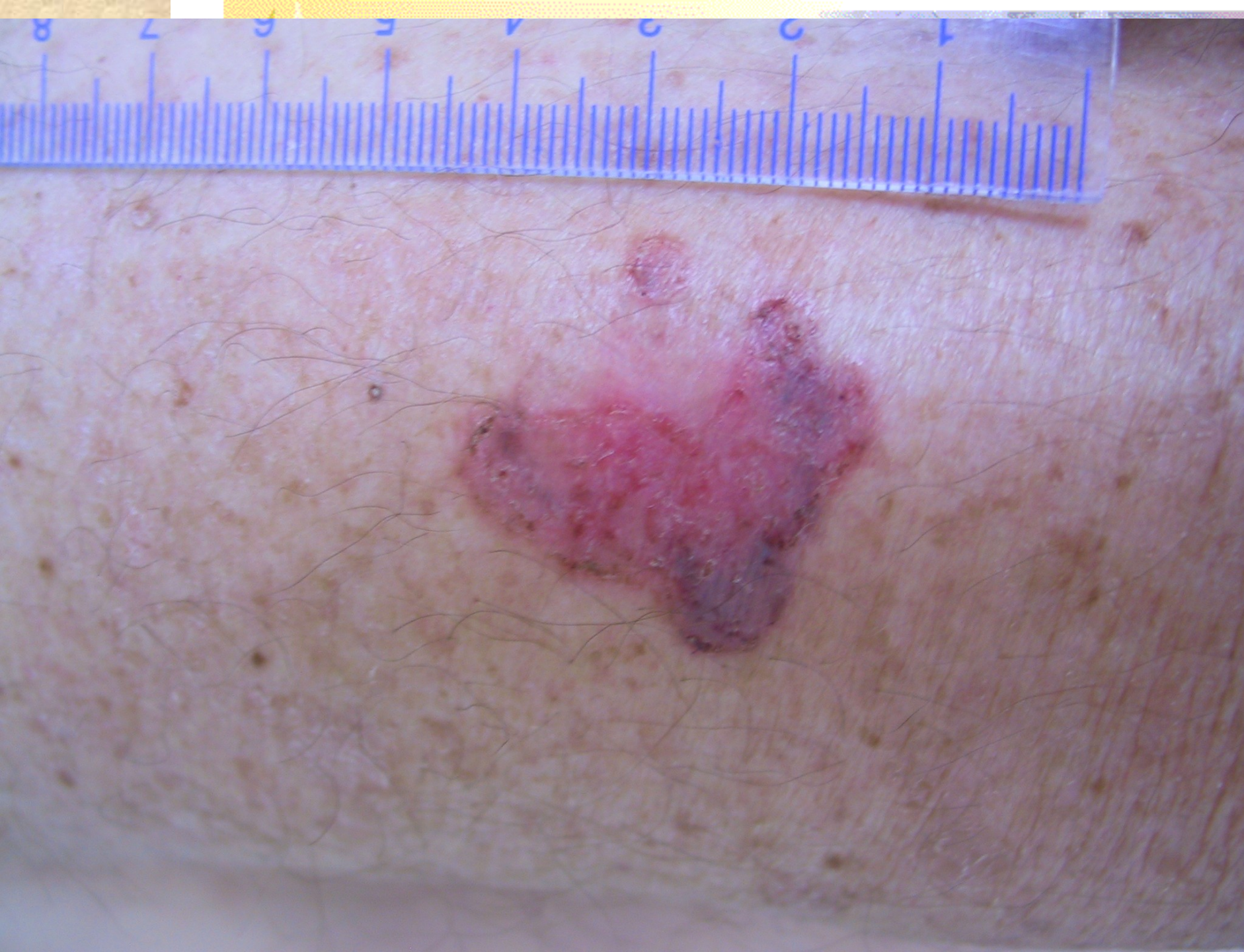
Actinic keratoses





Morbus Bowen















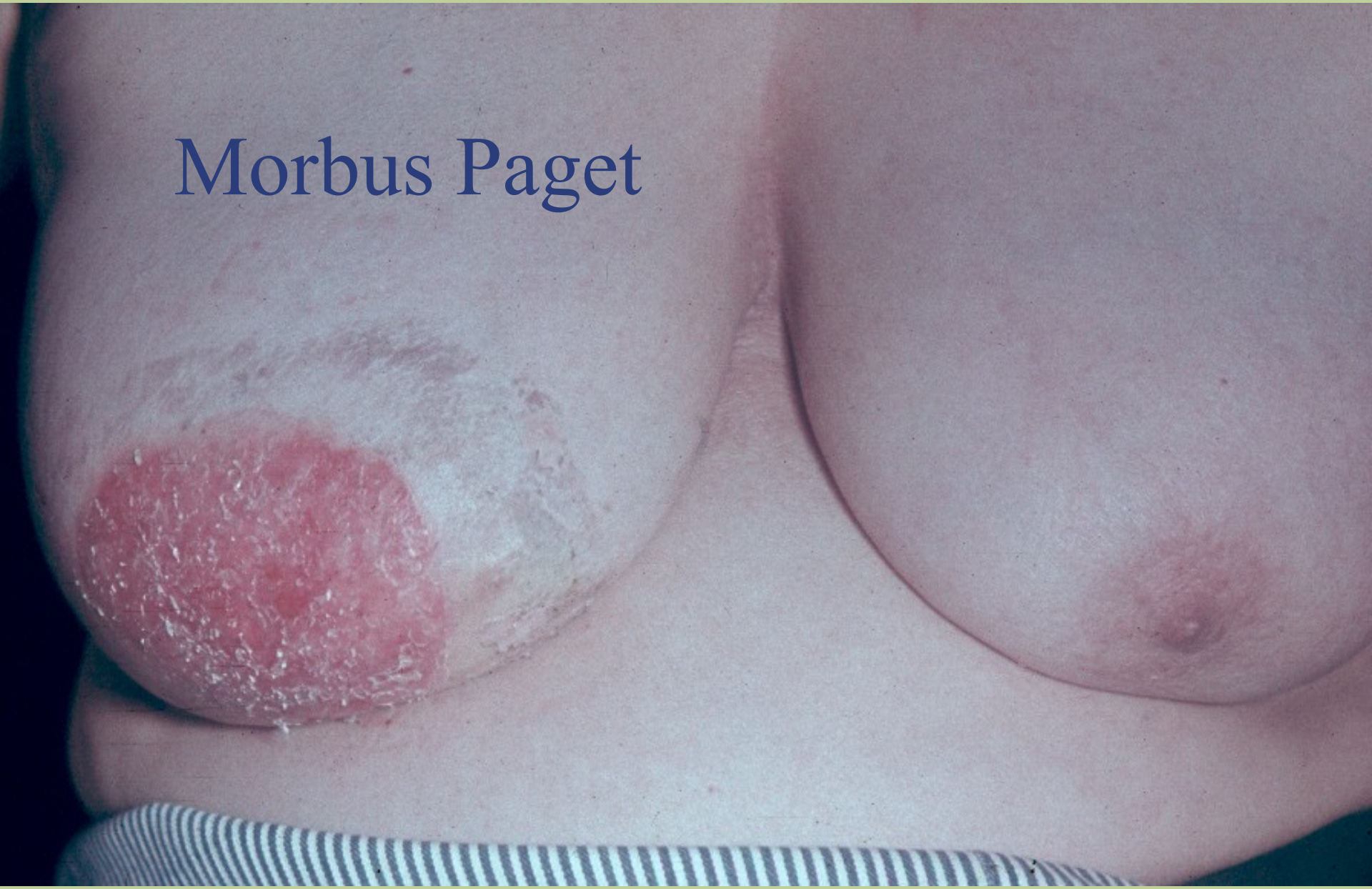




Keratoacanthoma



Morbus Paget

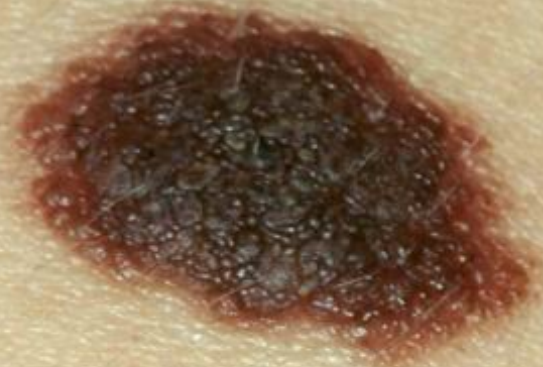




Malignant tumours non-epithelial

- Melanoma
- Sarkomas
Kaposi sarkoma
- Lymphomas
- Histiocytoses

Pigment cell nevus



Dysplastic nevi



Halo nevus





Malignant melanoma

- Phototype I, II
- Familiar dysplastic nevi – mutations 9p21
- Actinic damage - sunburn



Malignant melanoma

- ABCD rule
- Asymmetry
- Border
- Colour
- Diameter $>5\text{mm}$
- Evolution



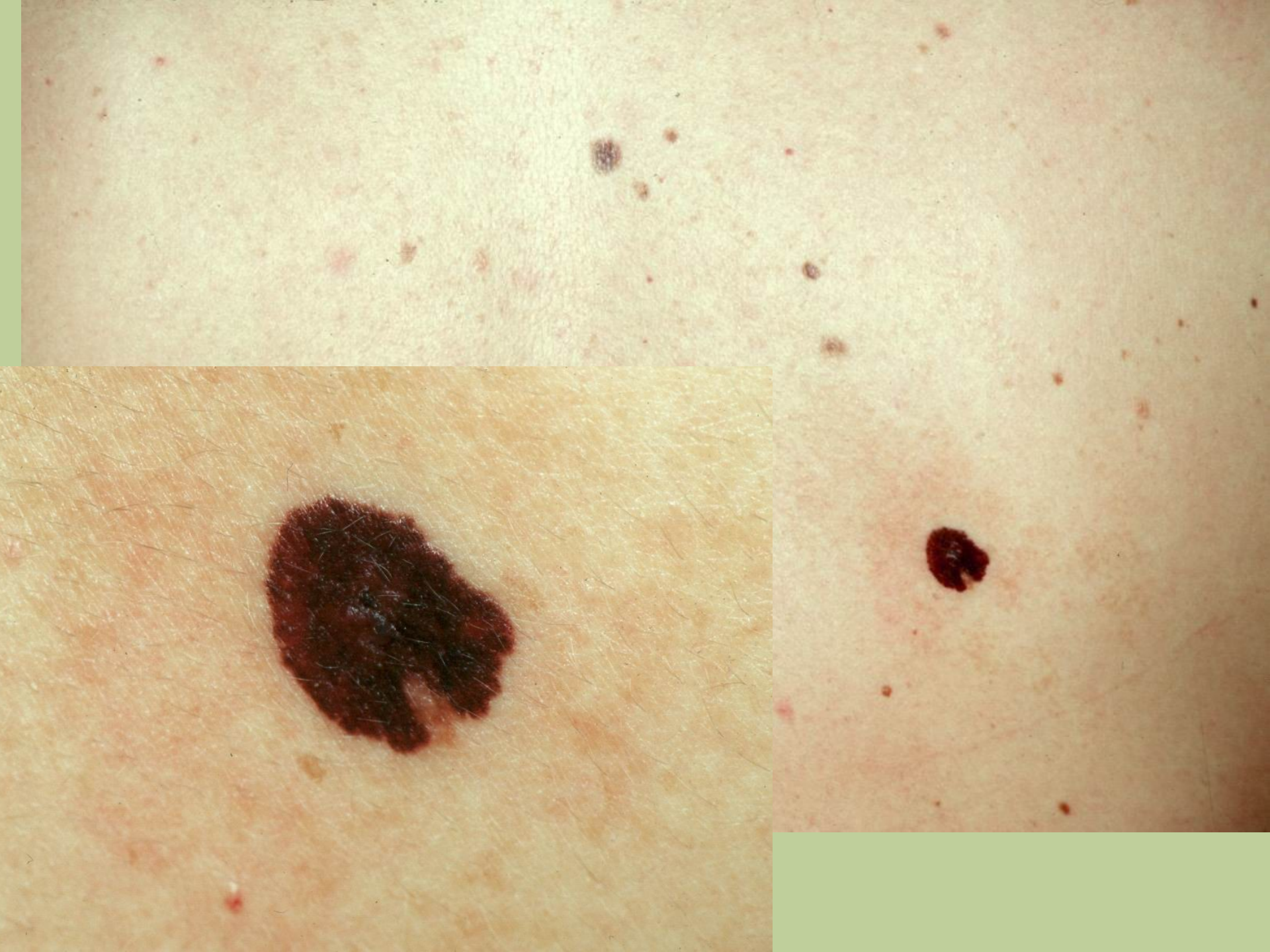
Malignant melanoma

- Superficially spreading
- Nodular
- Acrolentiginous
- Lentigo maligna melanoma



Malignant melanoma

- Histologic criteria
- Breslow < 1mm, < 2mm, more
- Clark I-V



























Lymphomas

- Nodal – pruritus, infiltration, ichthyosis, immunosupresion (scabies)
- Primary skin epidermotropic T cell
 - I.stage – chronic dermatitis
 - II. stage – skin infiltration
 - III. stage – tumours







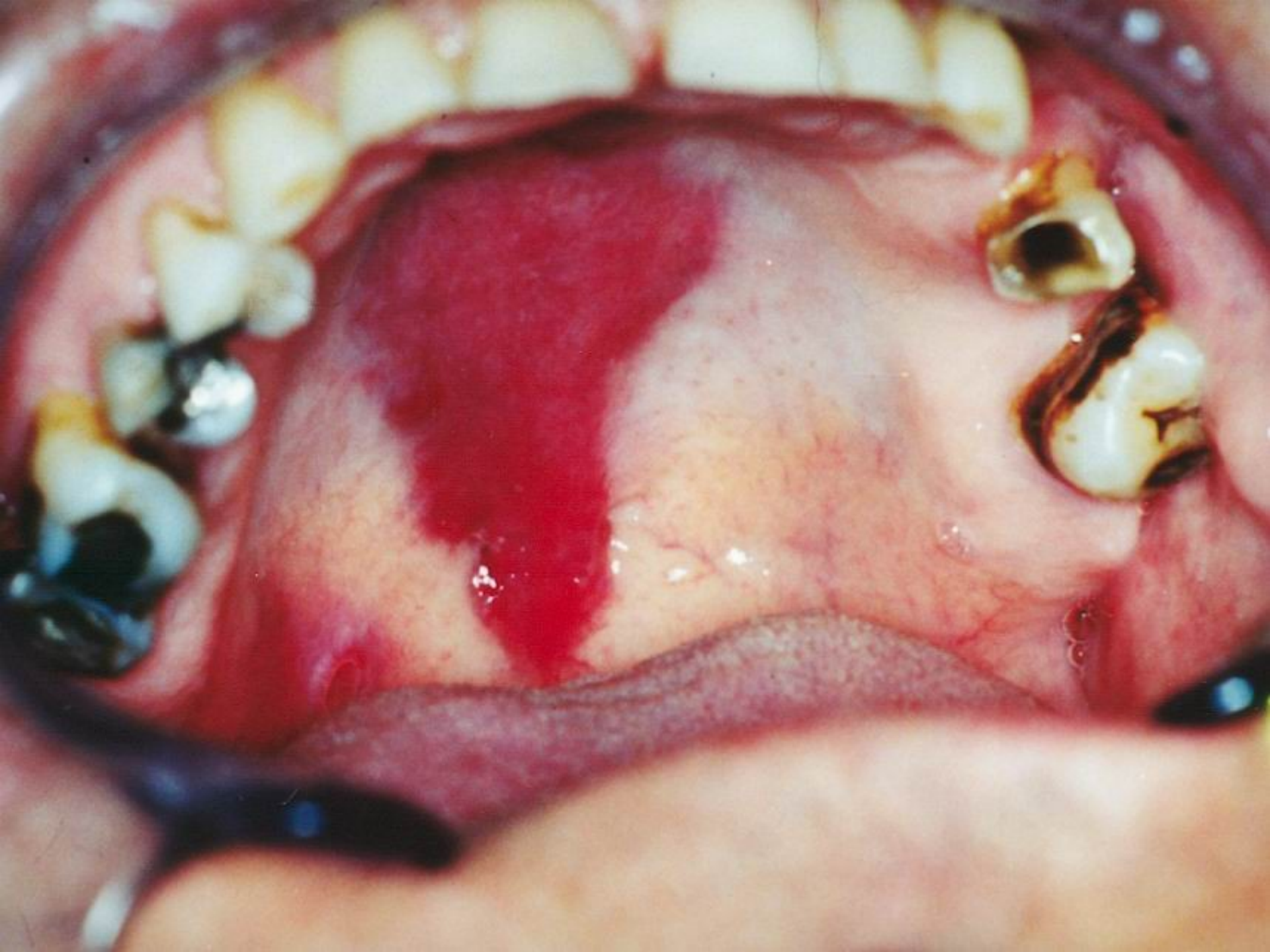
B cell lymphoma



Kaposi sarkoma – old men

- HIV positivity









Metastatic disease

- Melanoma
- Squamous cell carcinoma
- Lung cancer - chest
- Breast cancer – chest, arms
- Renal tumours - scalp
- GIT tumours – navel (sister Mary Joseph nodule)











Paraneoplastic signs

- Ichthyosis
- Pruritus
- Keratoderma palmoplantar
- Dermatomyositis
- Bullous pemphigoid
- Acanthosis nigricans



