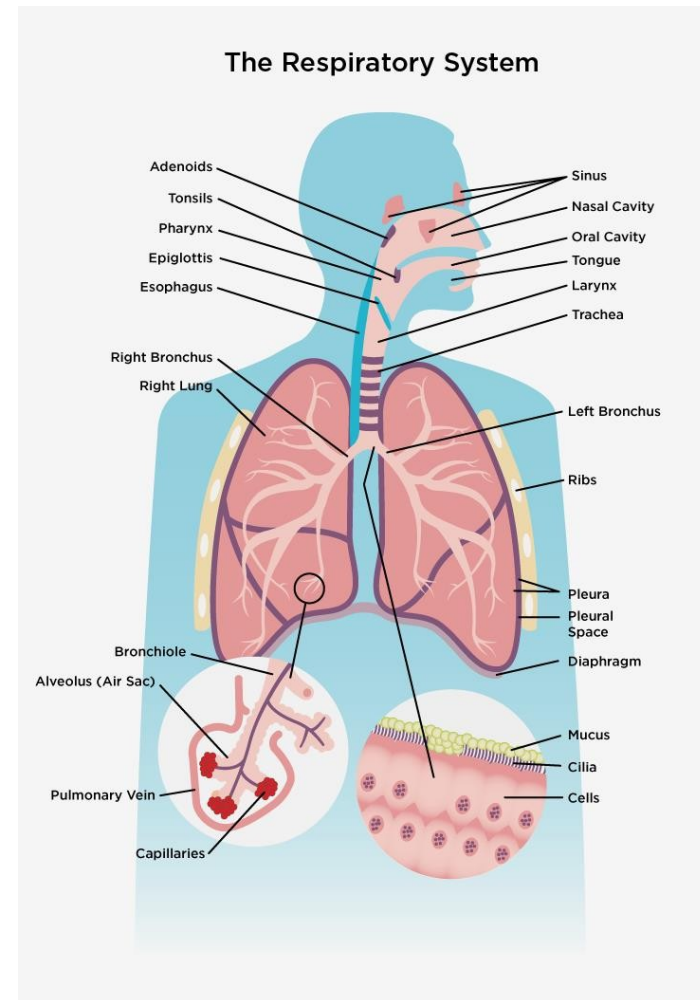




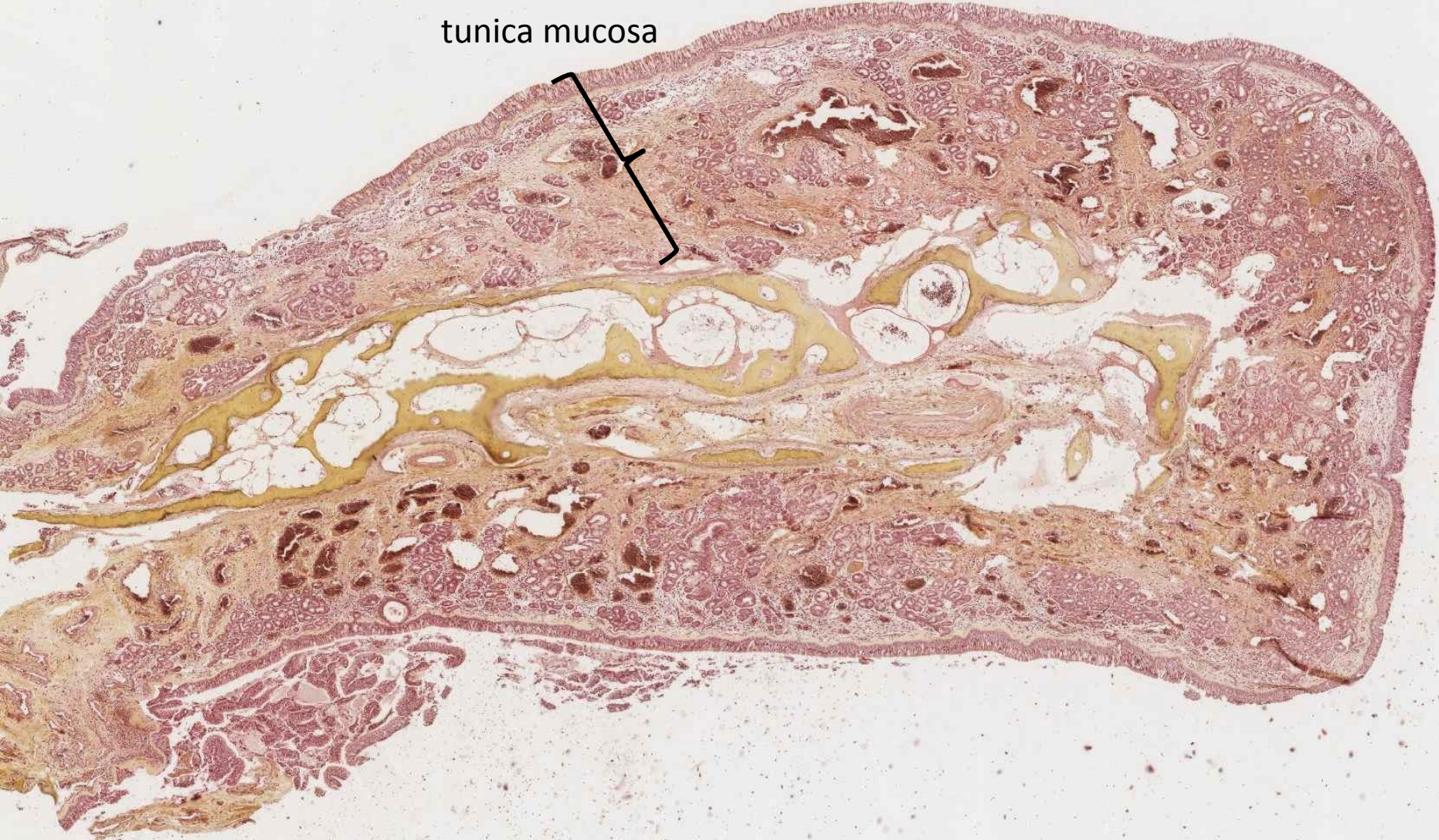
RESPIRATORY SYSTEM

- Respiratory passages
 - Nasal cavity (concha nasi)
 - Pharynx
 - Larynx
 - Trachea
 - Bronchi
- Lung (pulmo)

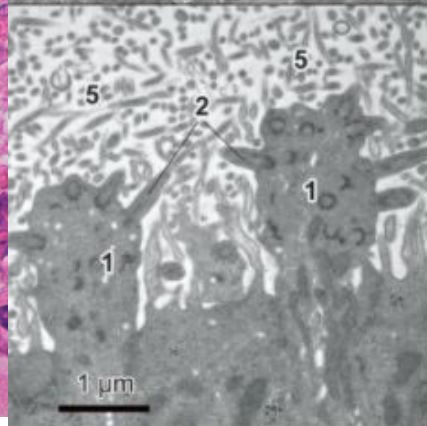
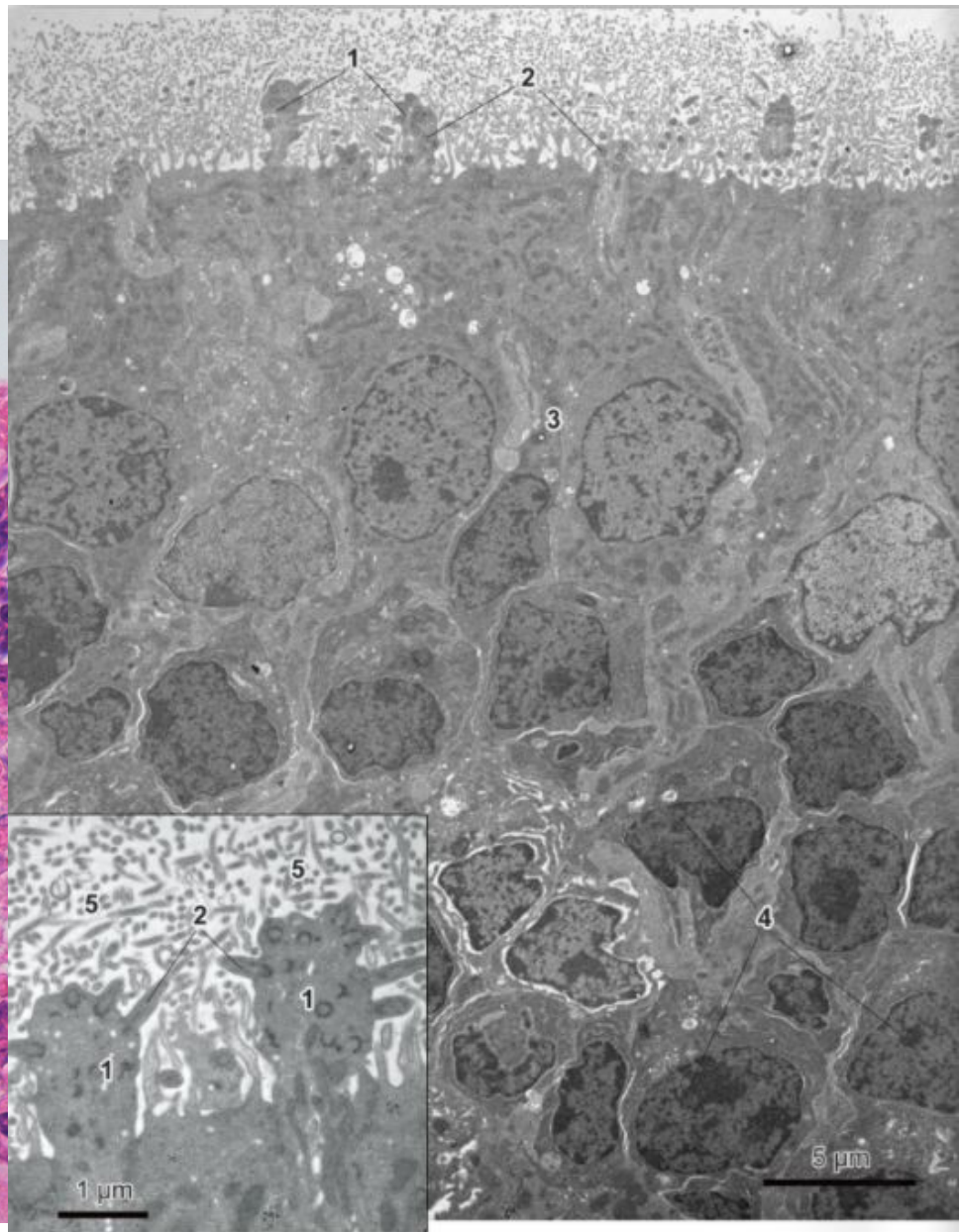
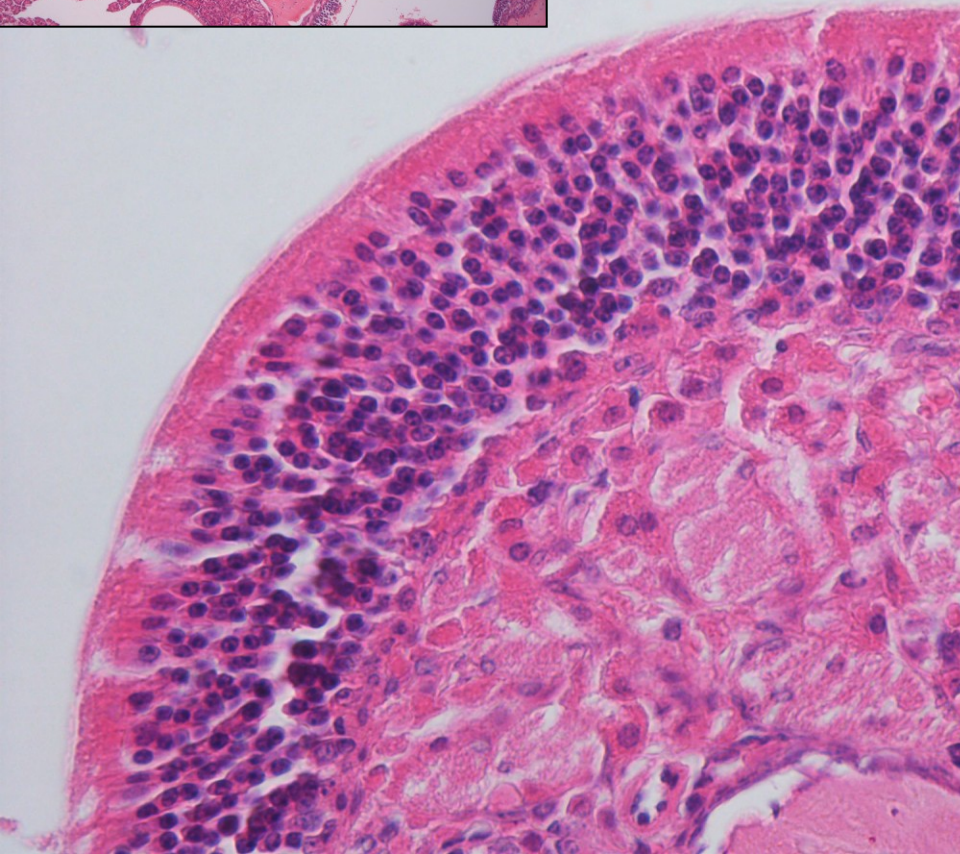


Concha nasi

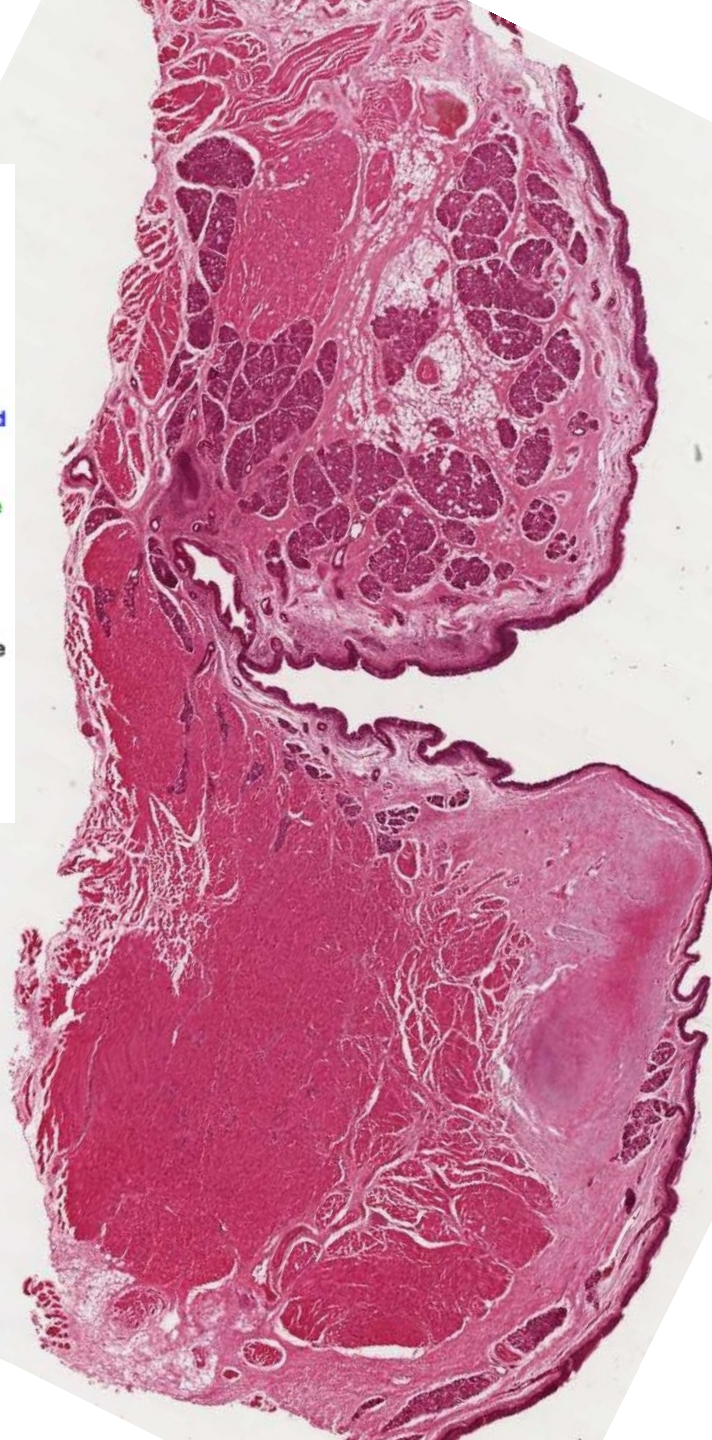
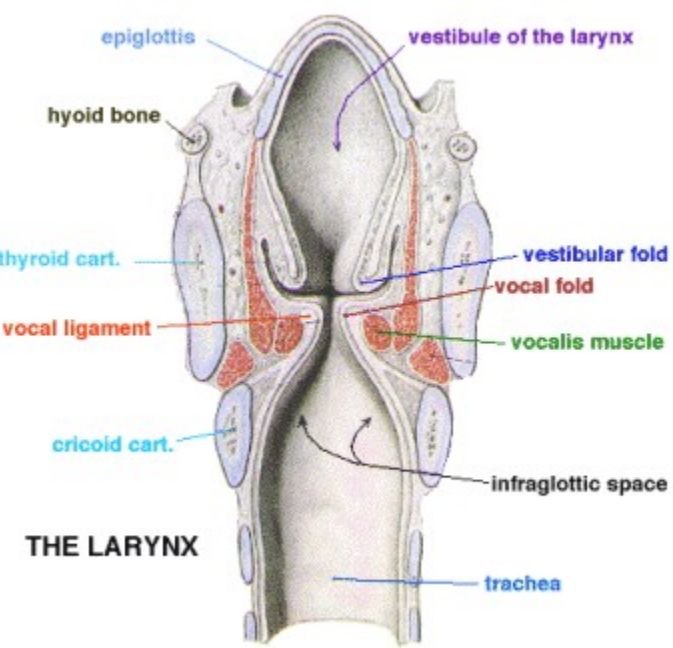
tunica mucosa



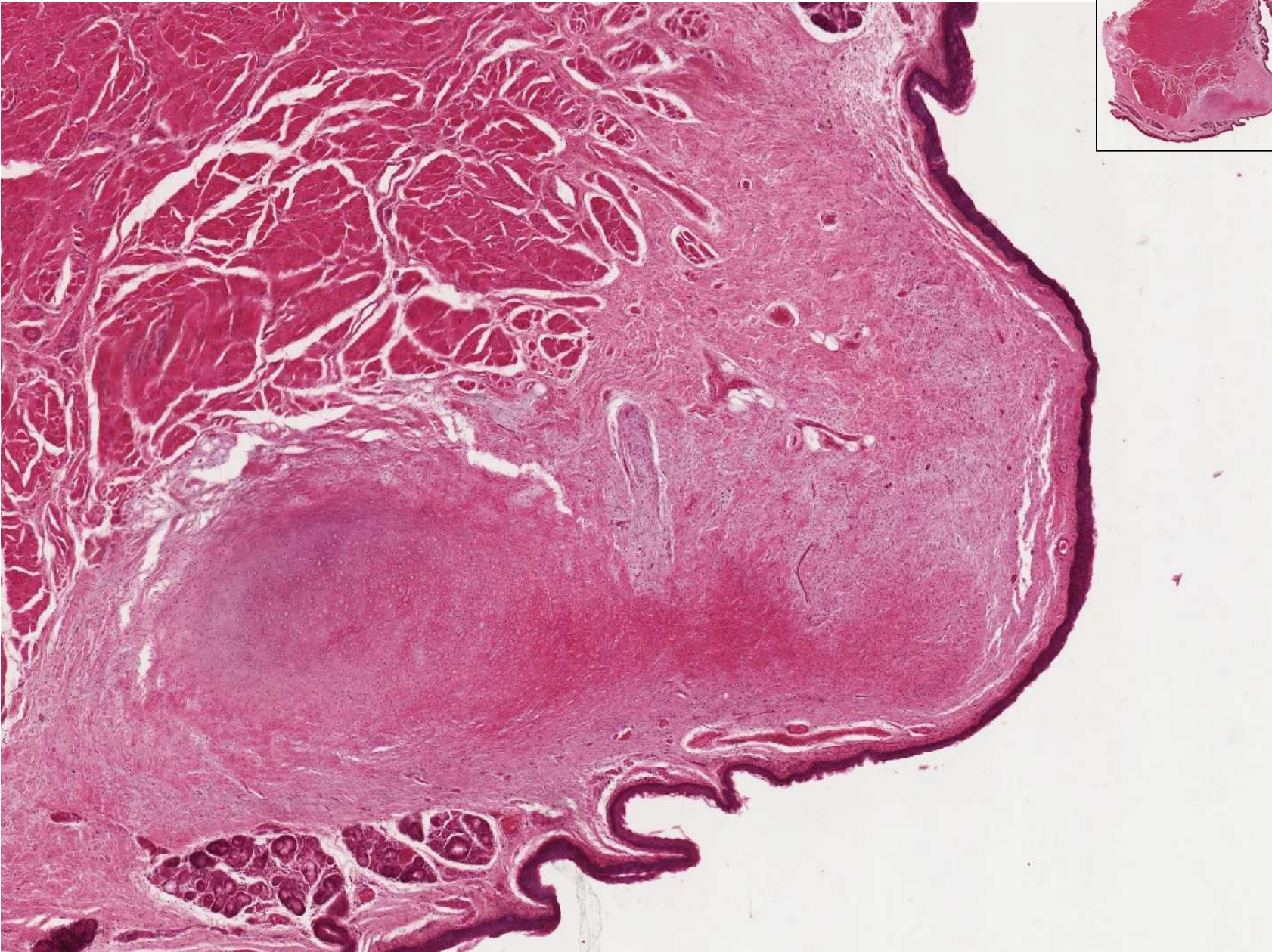
Concha nasi – sensory epithelium (mice)



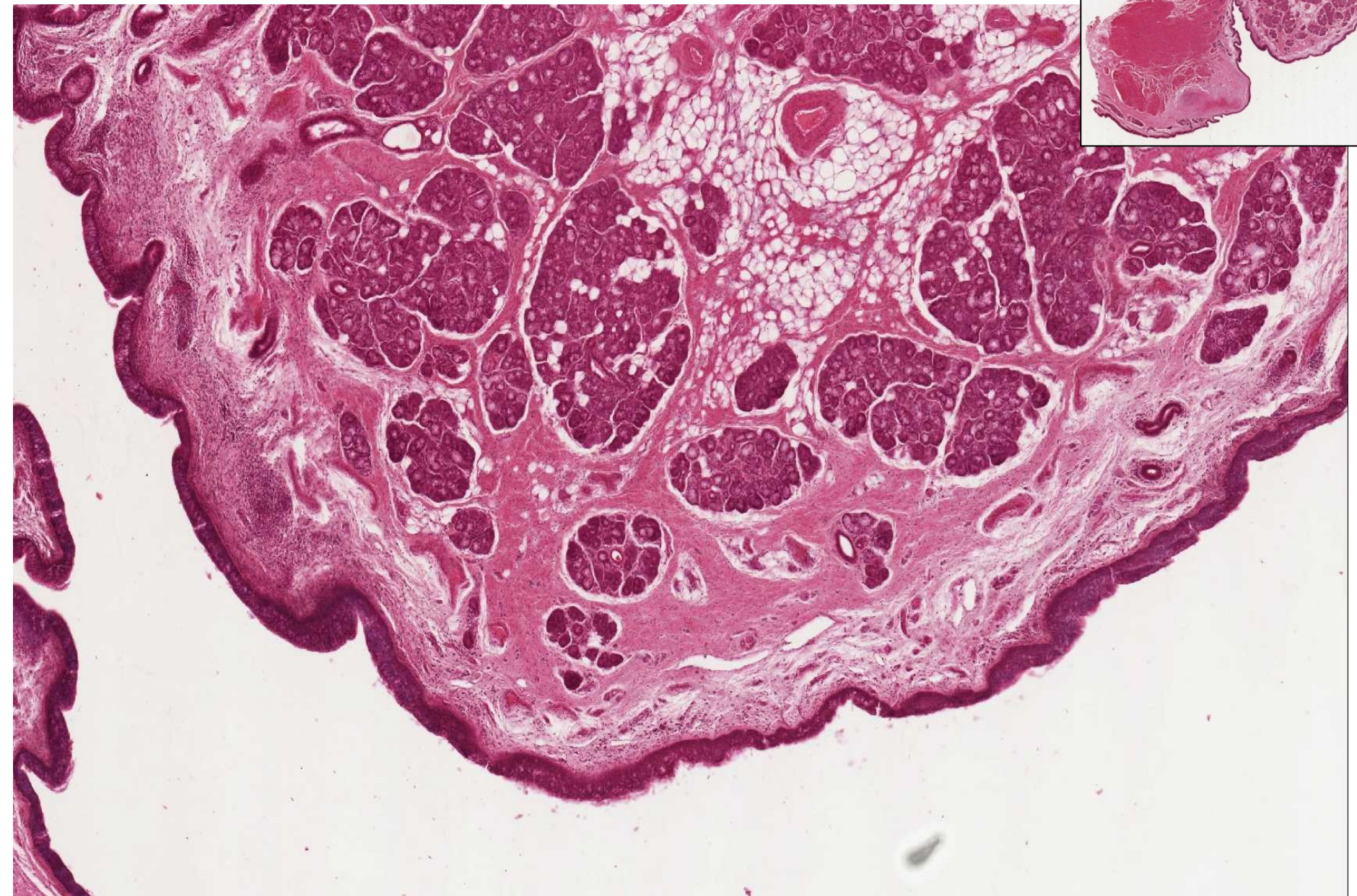
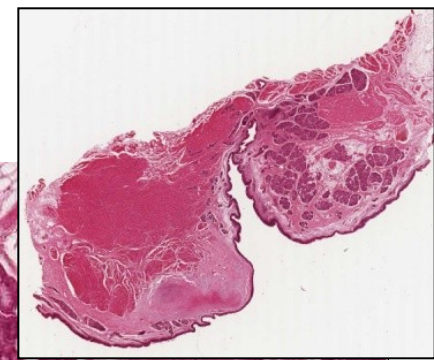
Larynx



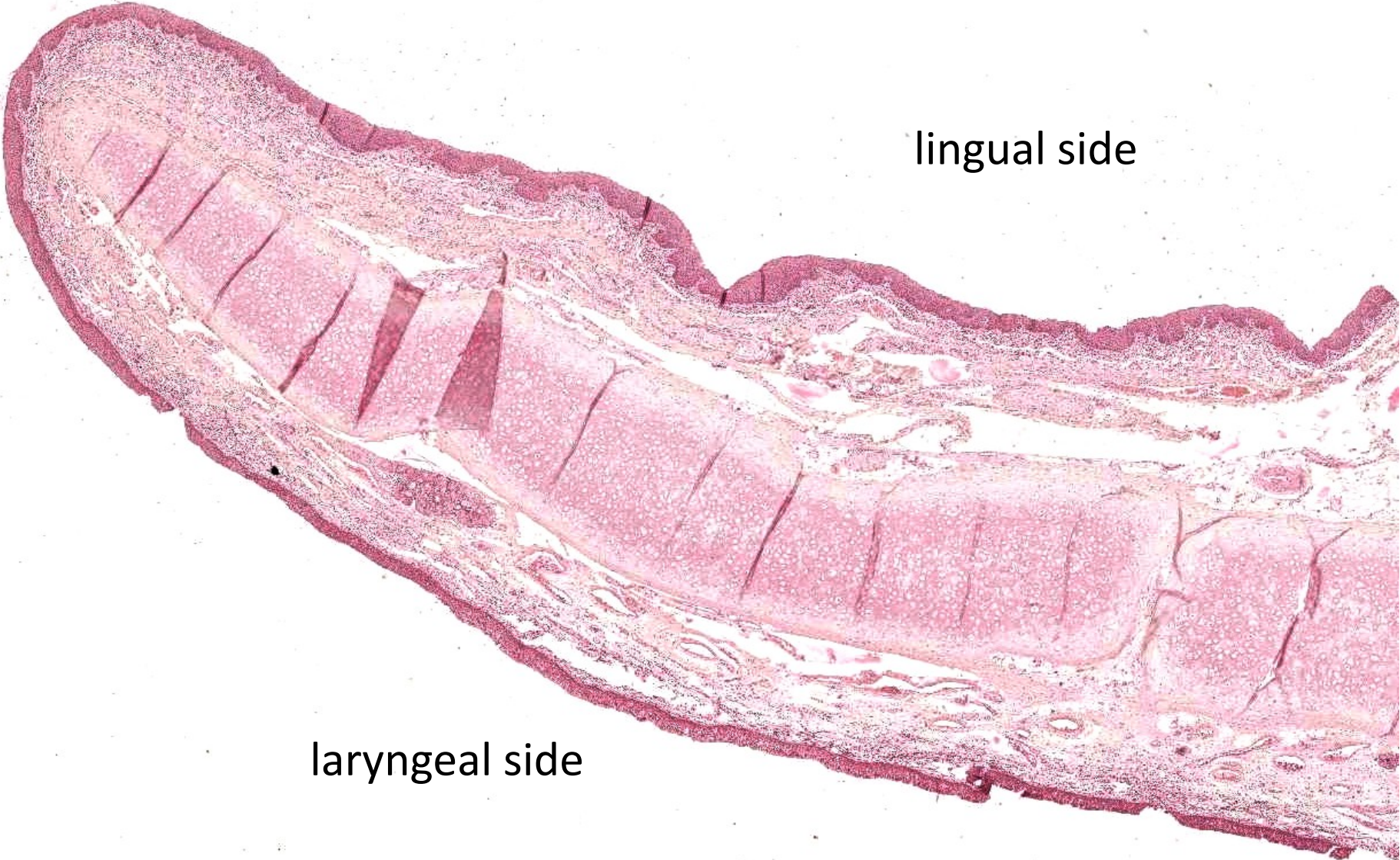
Larynx – plica vocalis



Larynx – plica ventricularis



Epiglottis

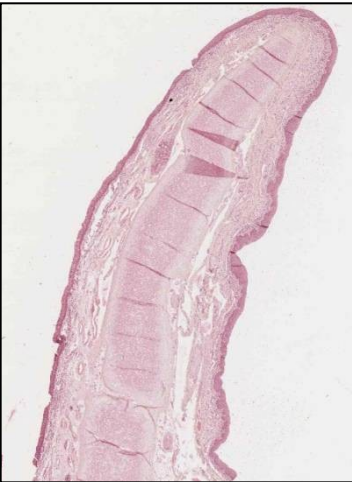
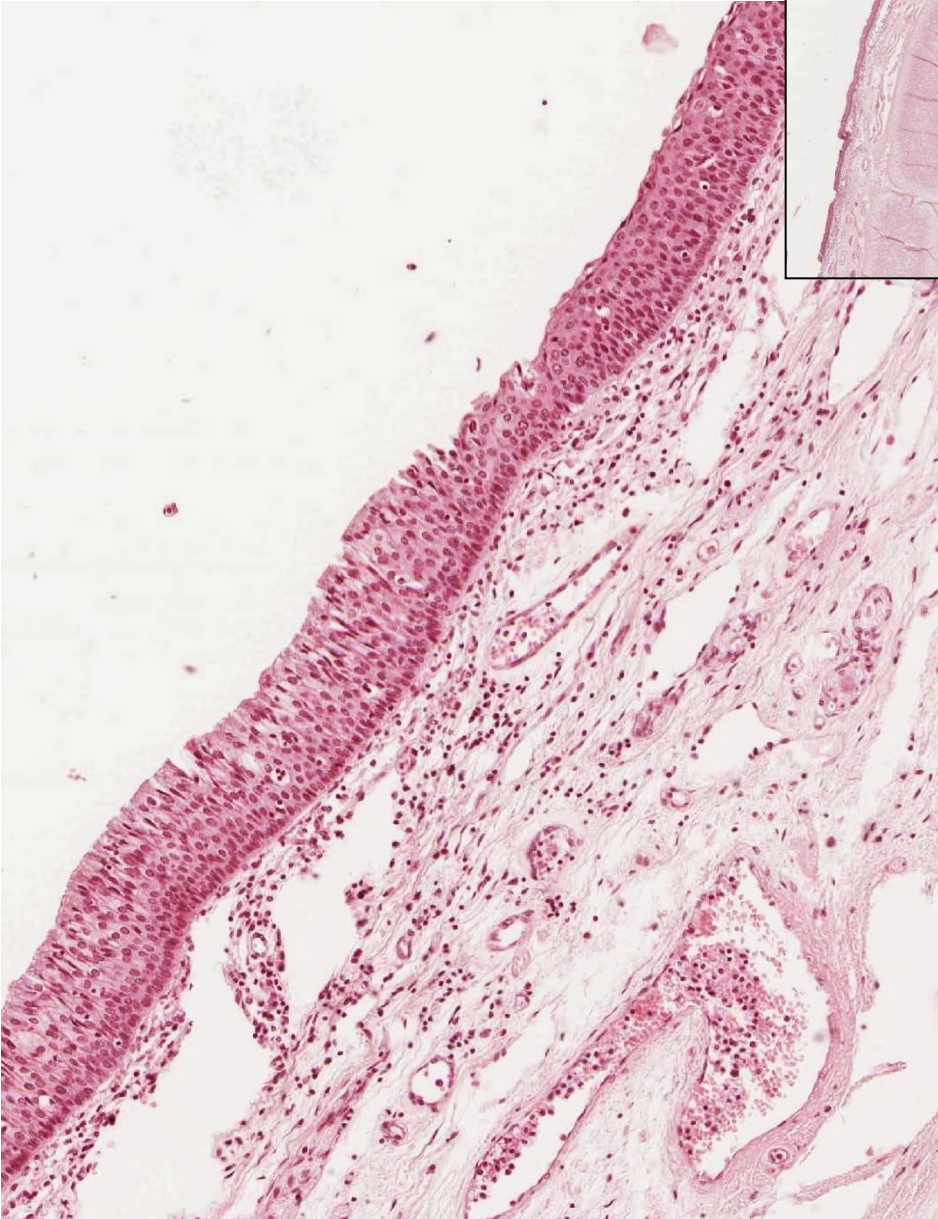


lingual side

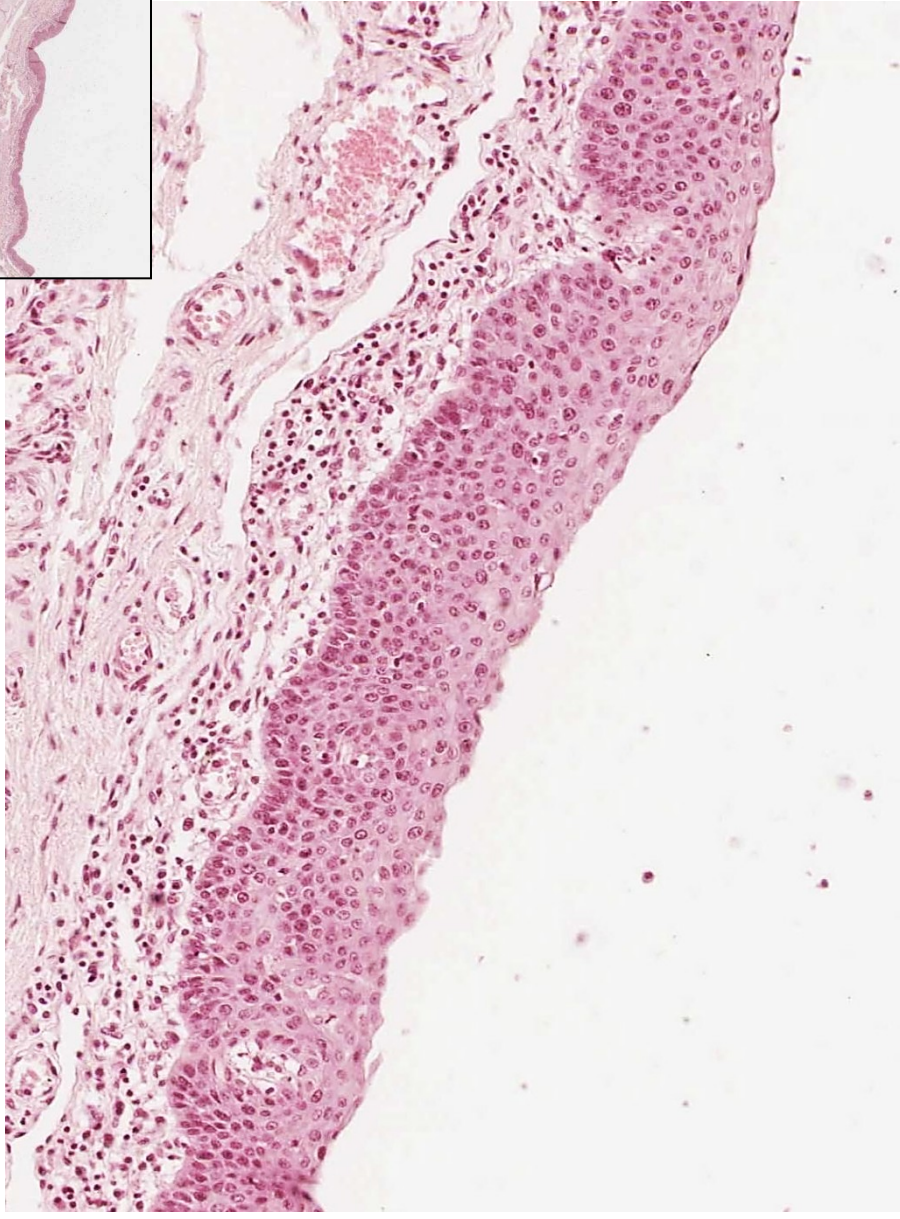
laryngeal side

Epiglottis

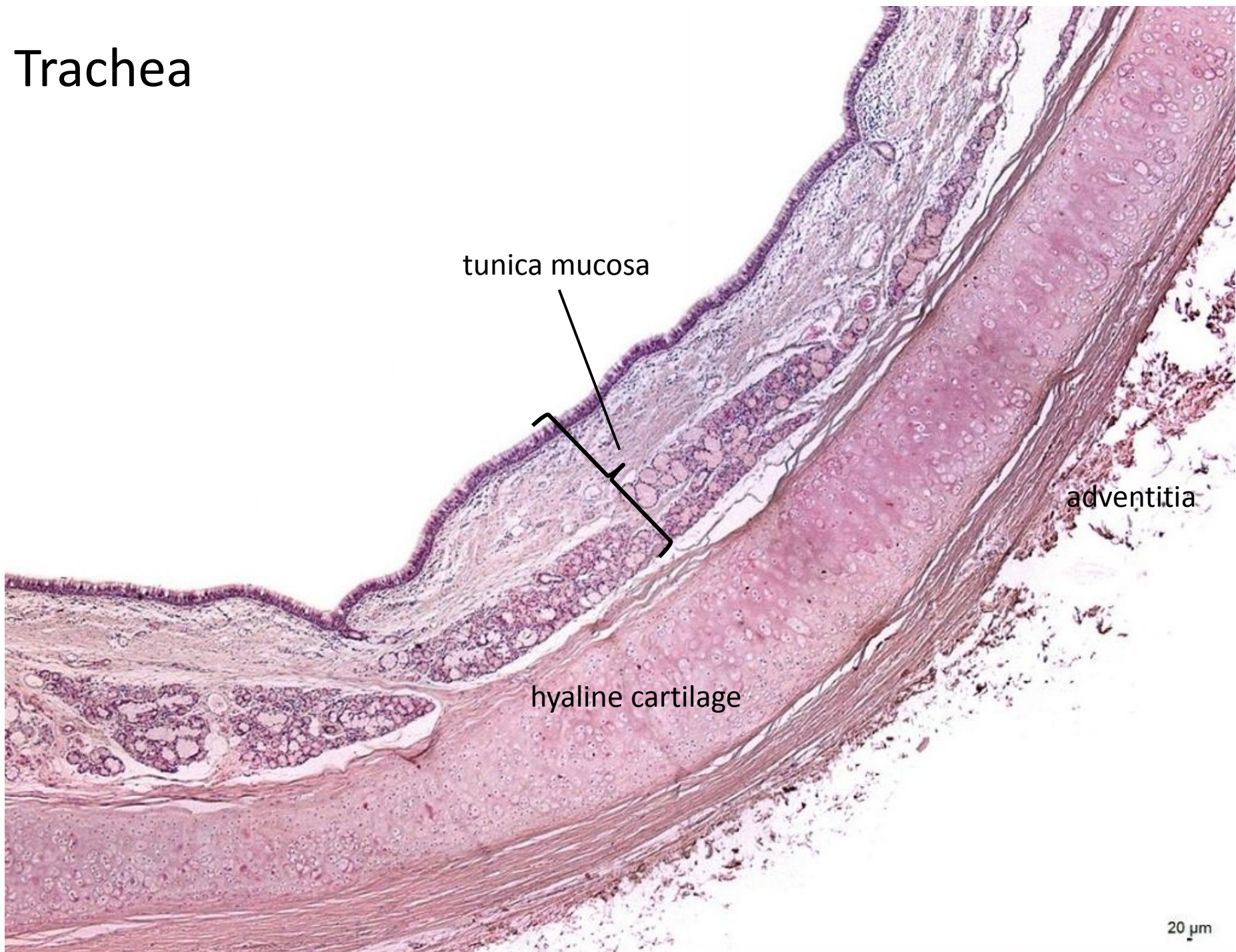
laryngeal side



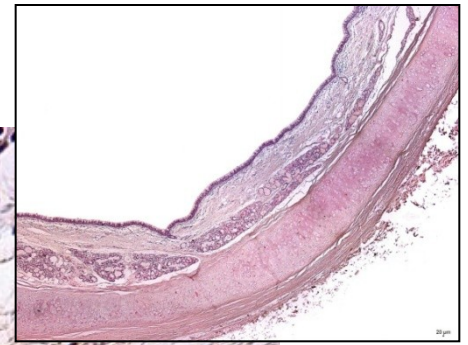
lingual side



Trachea



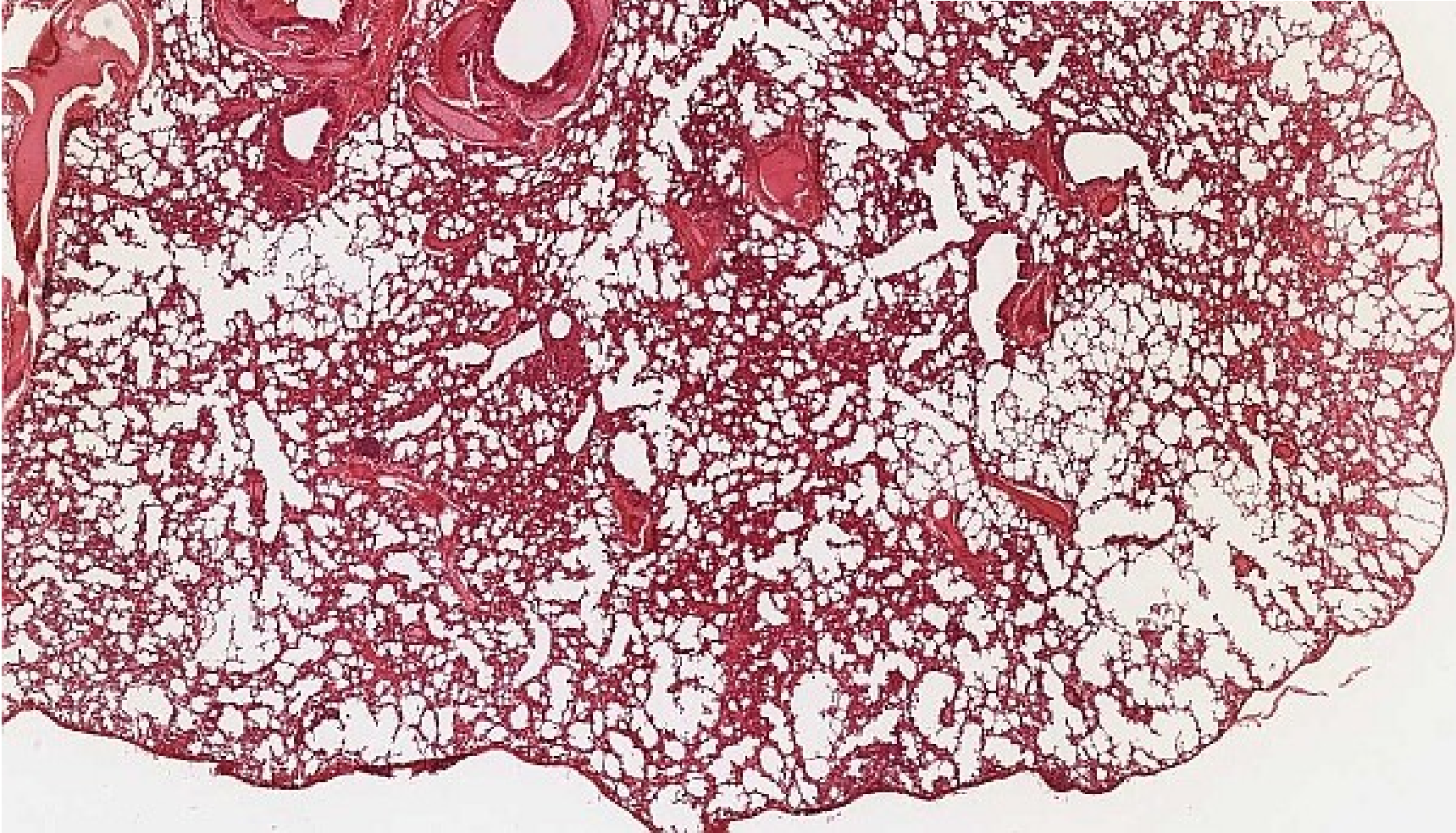
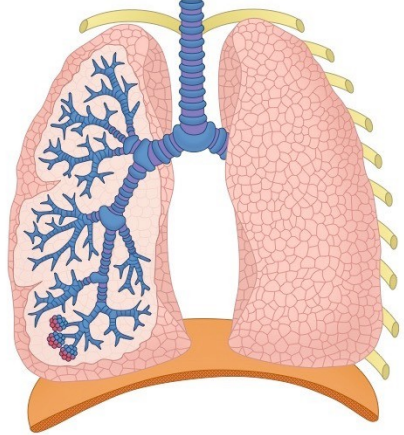
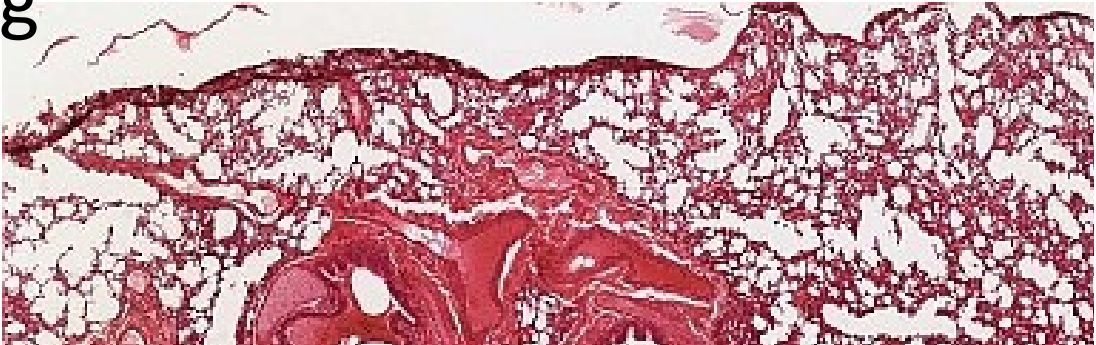
Trachea - mucosa



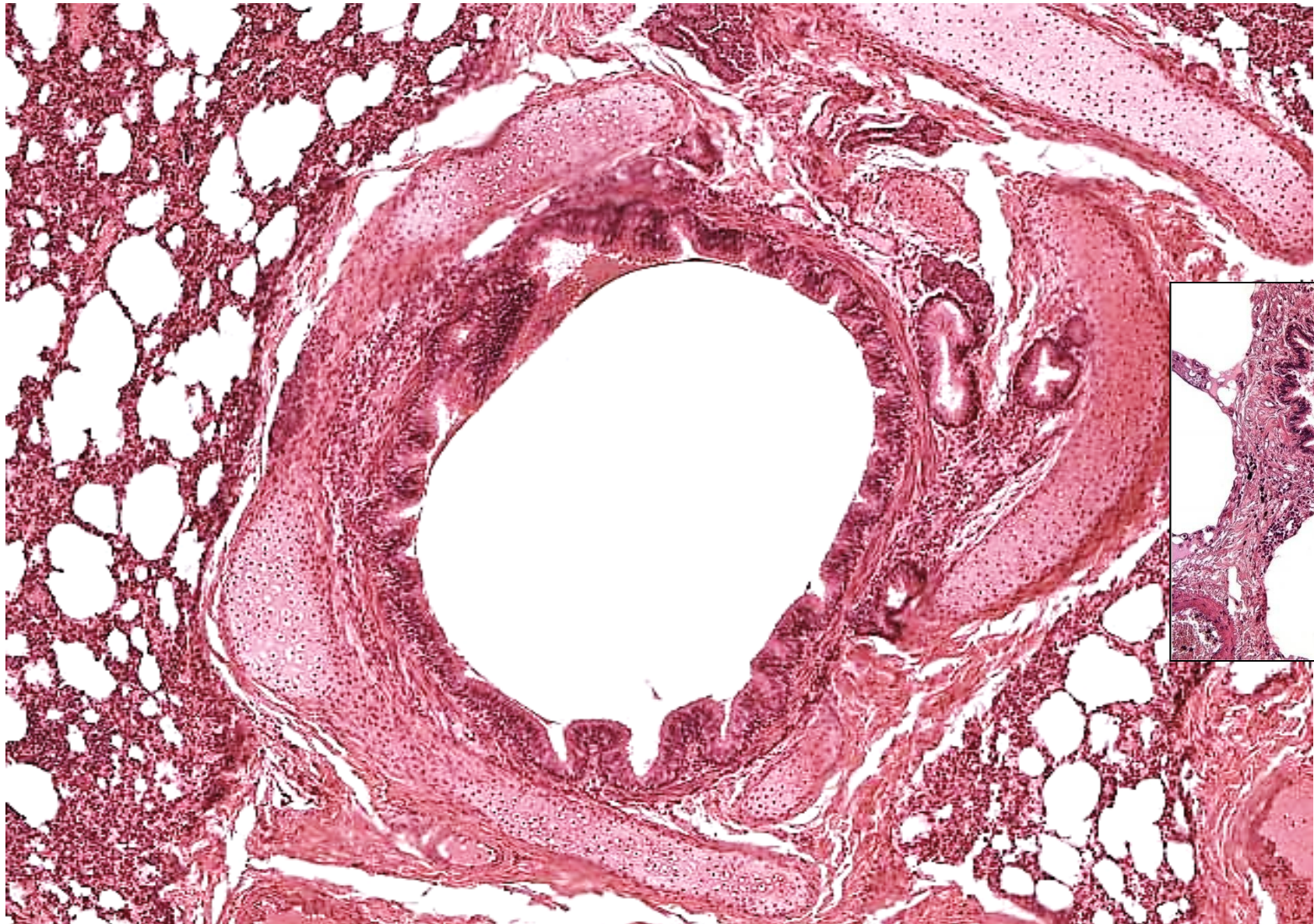
mixed glands

20 μ m

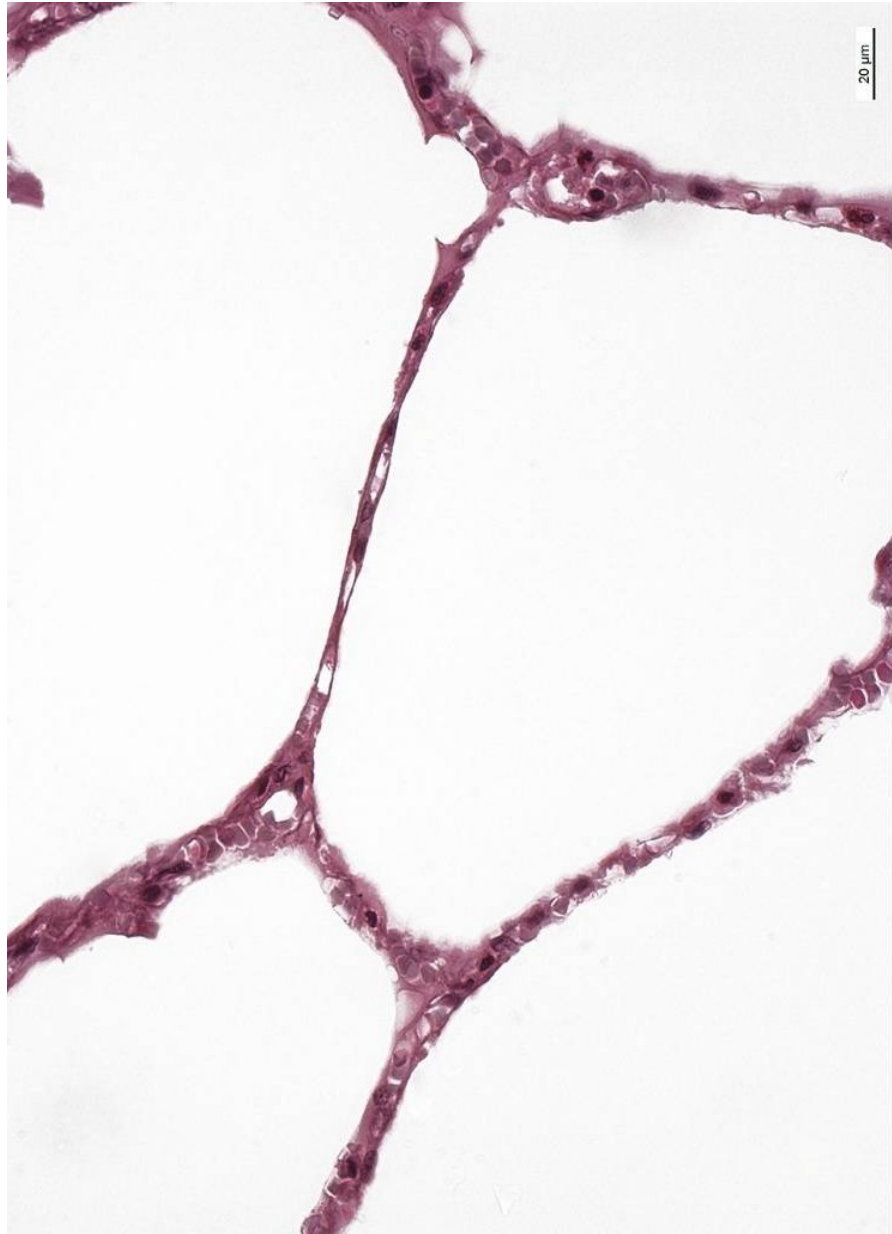
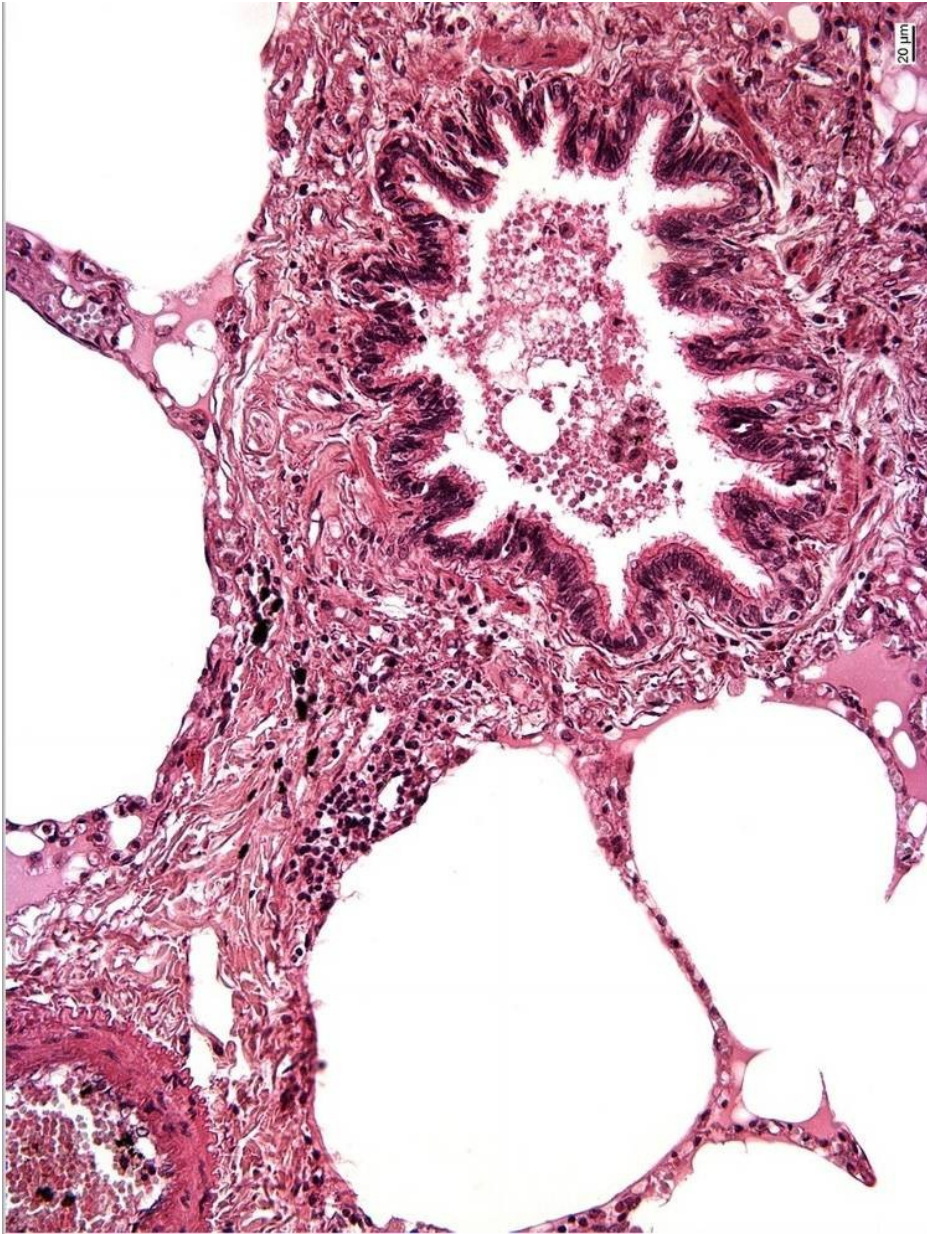
Lung



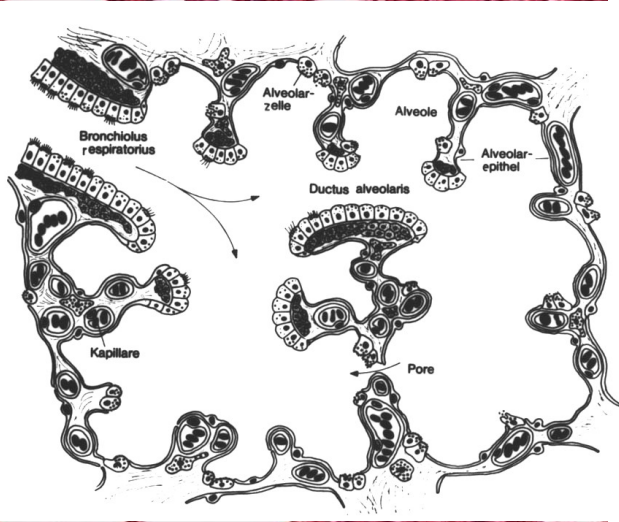
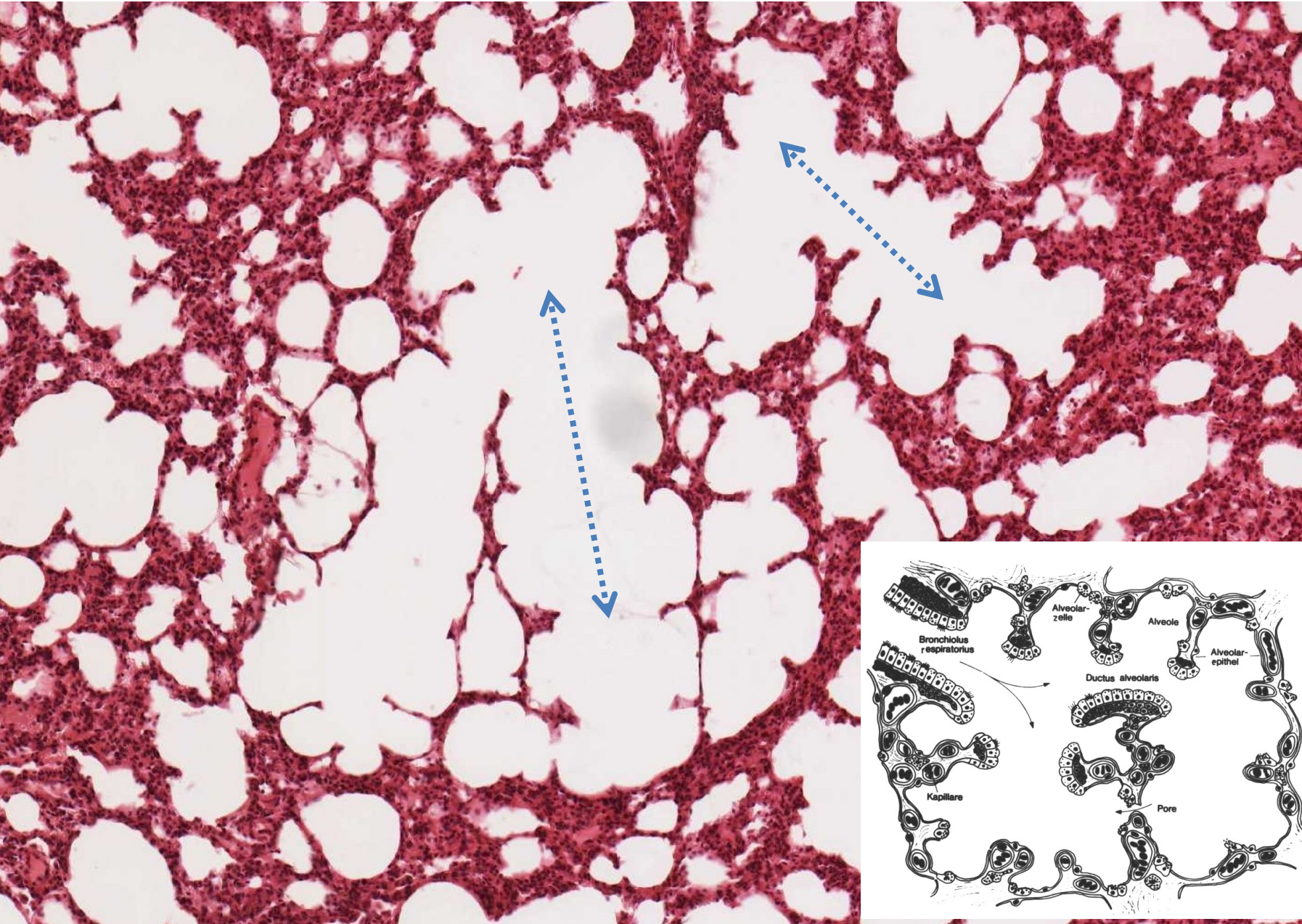
Bronchus / terminal bronchiole



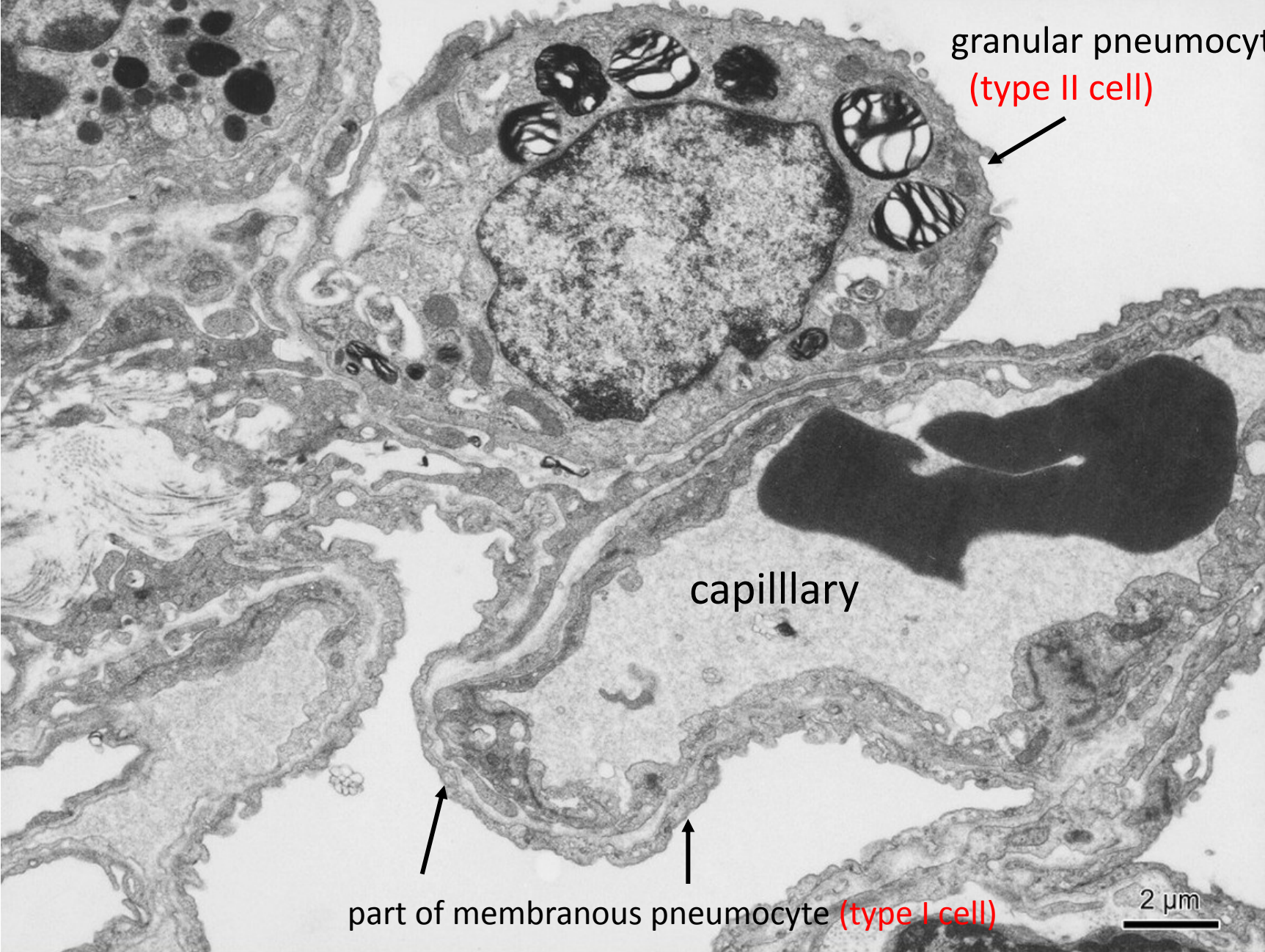
Terminal bronchiole / alveoli



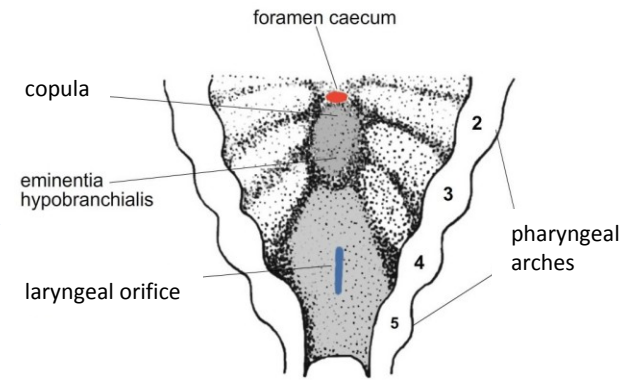
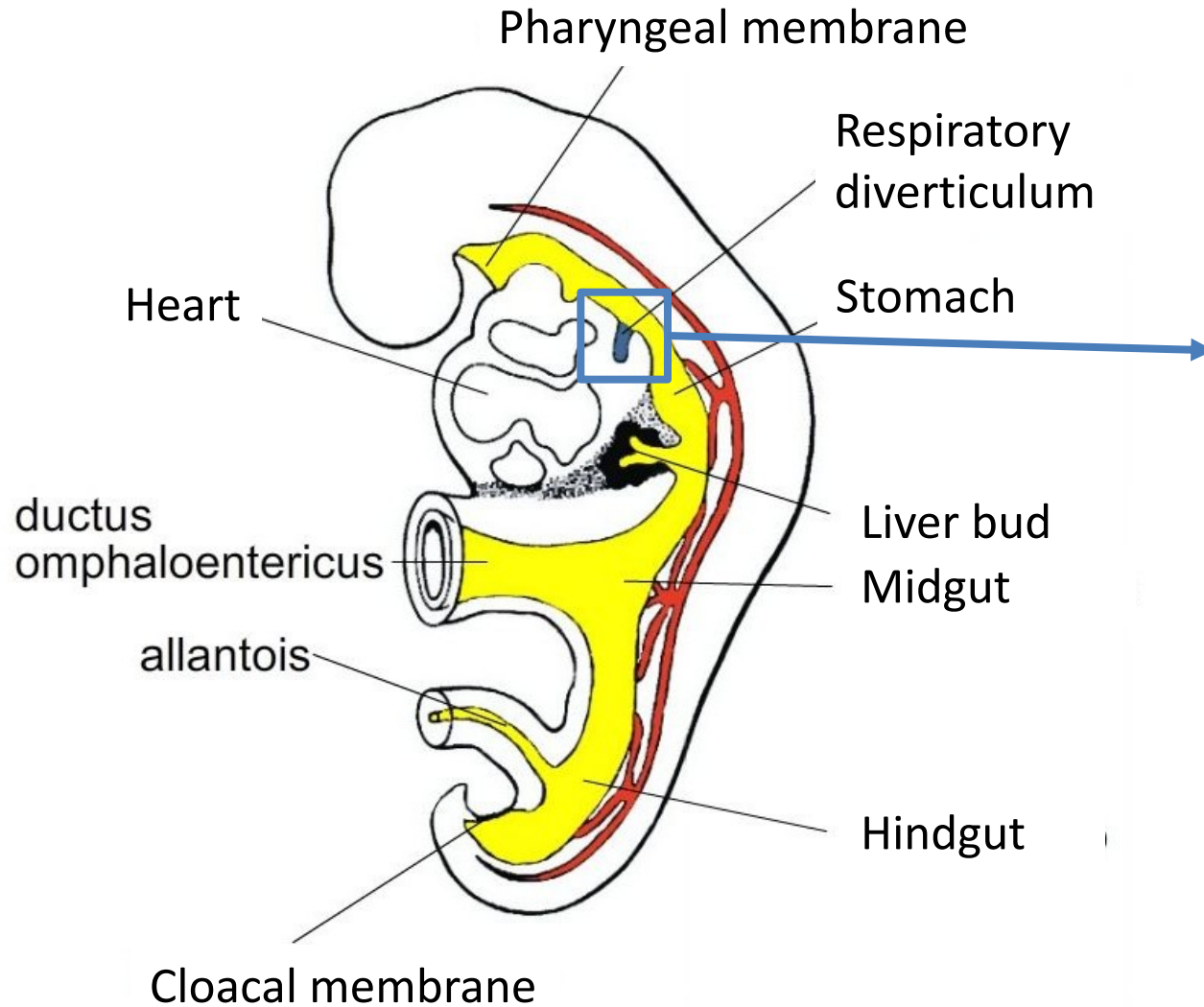
Ductus alveolaris (alveolar duct)



Interalveolar septum, alveolar epithelium



Development of respiratory system

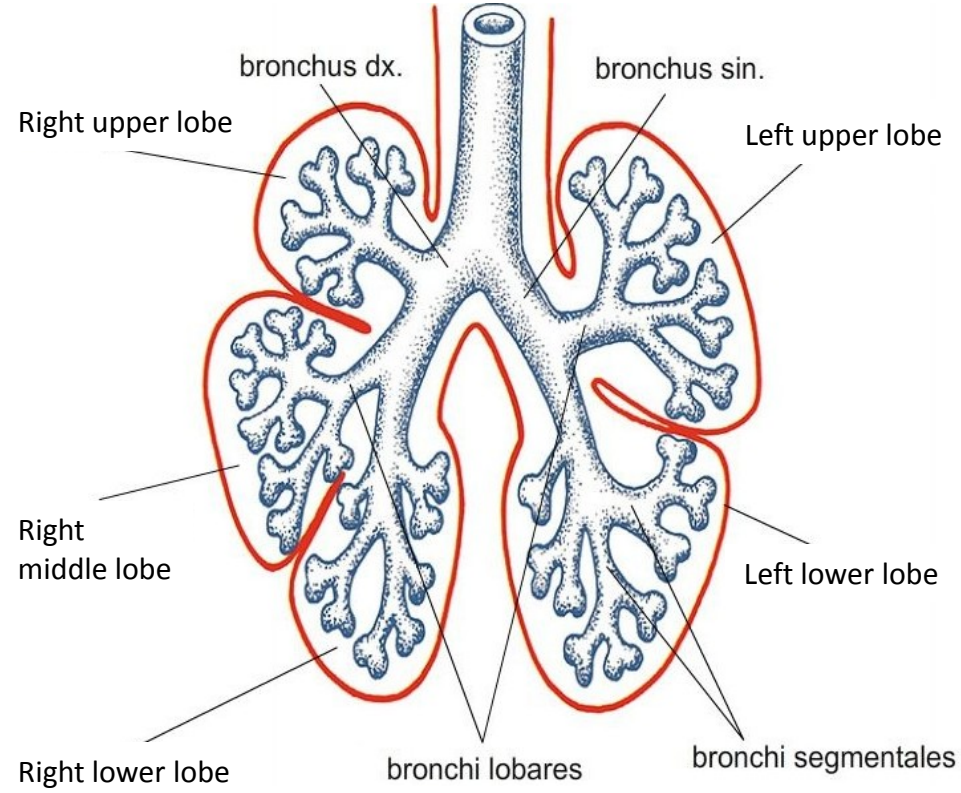
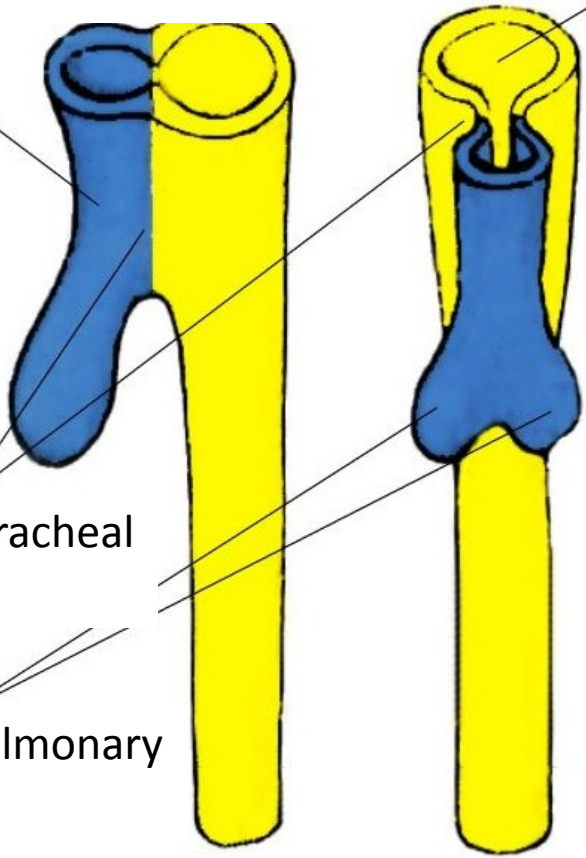


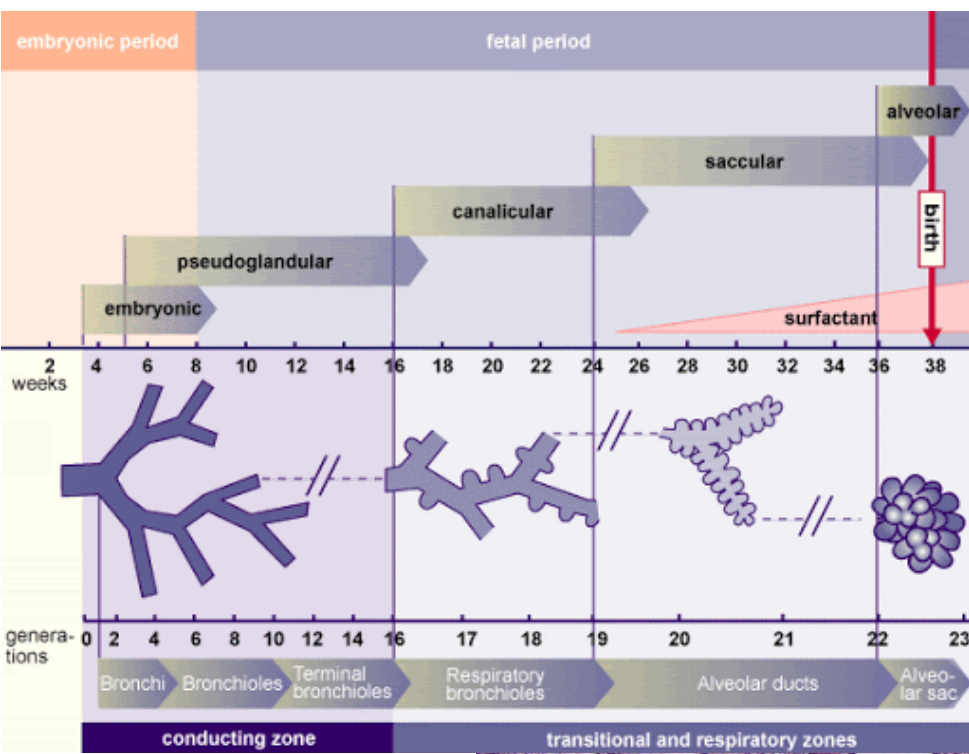
Respiratory diverticulum

Foregut

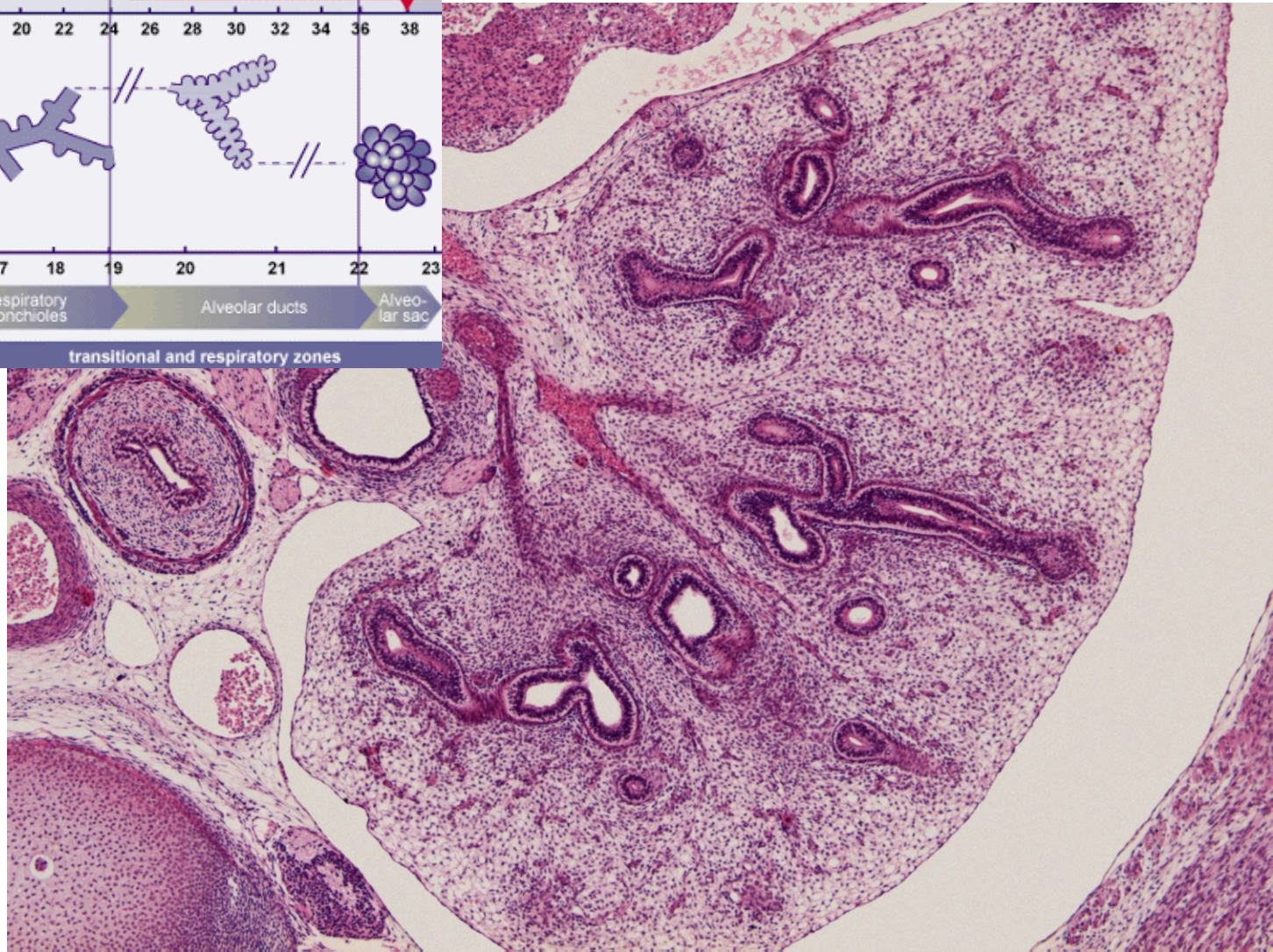
Esophagotracheal ridge

Bronchopulmonary buds





Human embryo (8th week)





Slides Respiratory system

- 24. Concha nasi
- 25. Epiglottis (HE)
- 26. Larynx
- 27. Trachea
- 28. Epiglottis (orcein)
- 29. Pulmo

Atlas EM

- Olfactory epithelium (23)
- Bronchiolus (60)
- Alveolar epithelium (61)
- Development of lung (83)