

Isolation of the operating field

Dry field in oral environment?

- Access
- View
- Setting of materials

What does complicate the treatment?

- Saliva
- Cooling water spray
- Blood

Dry field management

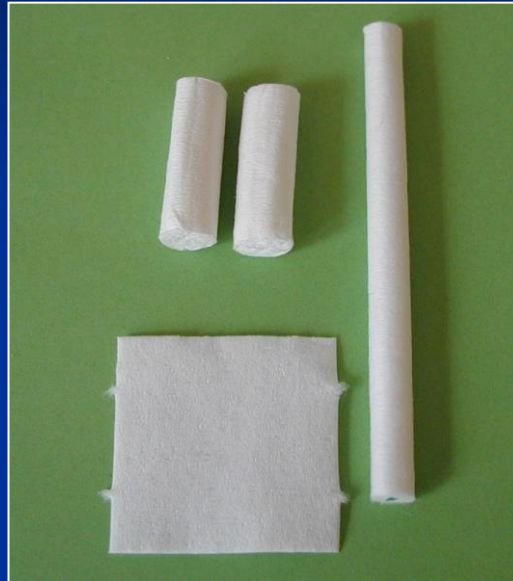
Relative dry field

Absolute dry field

Relatively dry field

Cotton rollers

Cotton squares



Cotton cups



Relative dry operating field

- Belvedere matrix
- Wooden wedges
- Minidam





Wooden wedge

Access to the cavity
(retracts the gingiva)

Dry field
(stops bleeding)

- Matrix adaptation
(presses the strip tightly)

Absolutely dry operating field

Rubber dam (kofferdam)

A membrane which isolates the operation field from oral environment.



Sheet

Frame

Rubber

Punch forcep



Clamp

Components

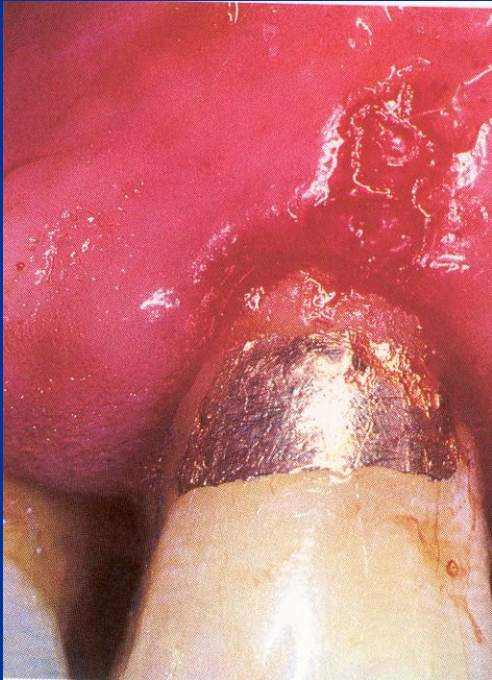
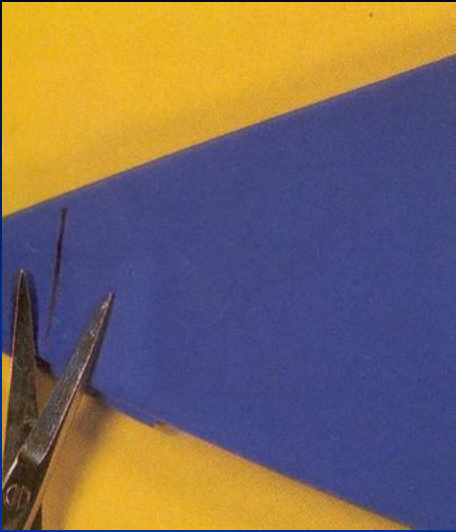
Clamp forceps

Benefits

- Protection of patient against gulp or aspiration
- Protection of dentist and assistant against infection
- Aseptic approach
- Absolute dry field
- Retraction of soft tissues
- Protection of soft tissues
- Better access to the operation field

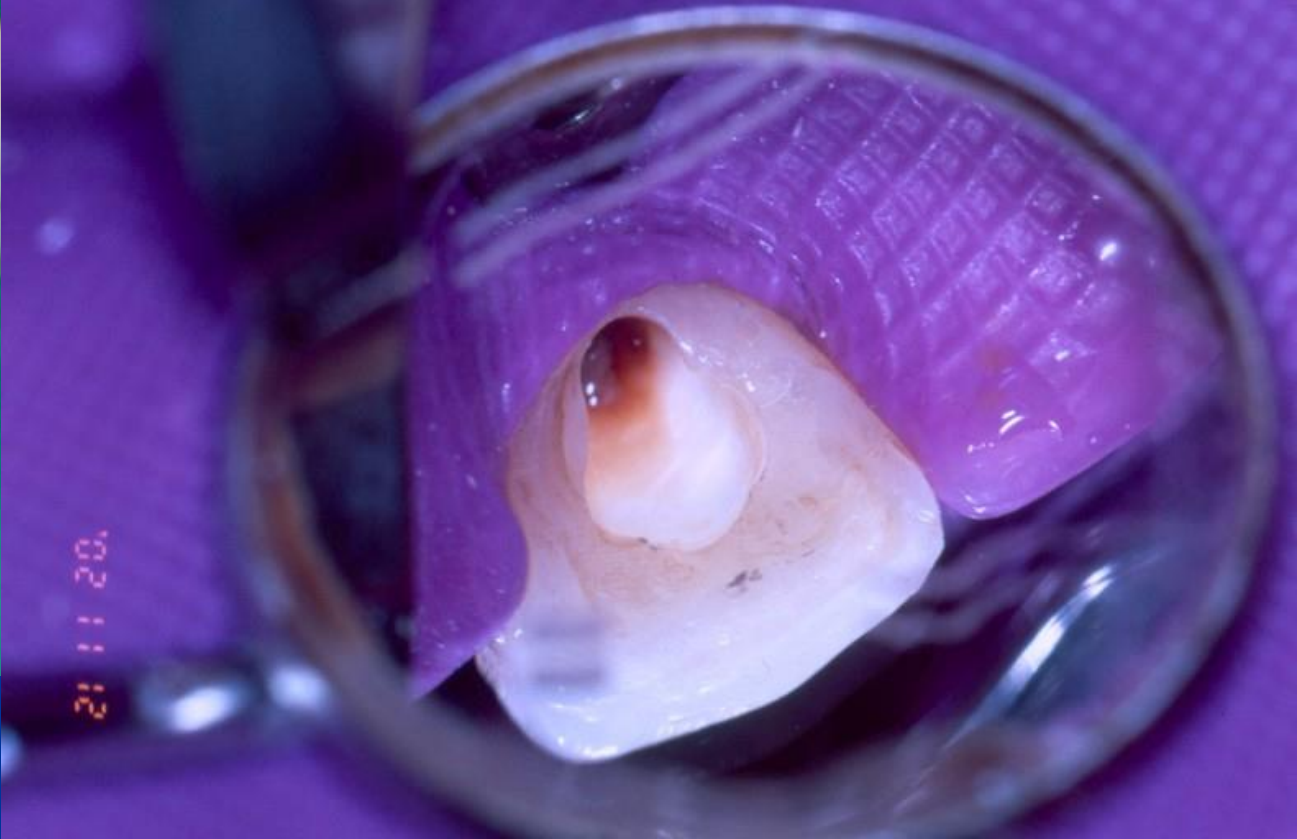
RISKS

- Limitation of oral breathing
- Fear
- Latex allergy
- Aspiration or gulp of the clamp
- Damage of hard and soft tissues





Contact allergy

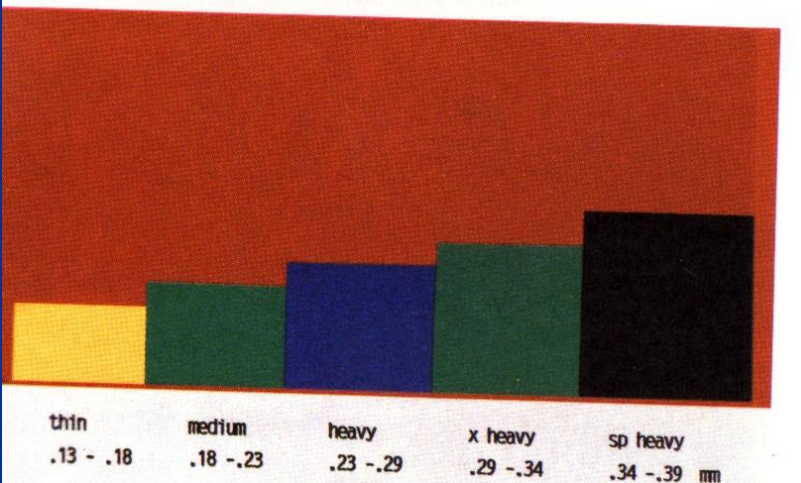




Rubber

Roll

Square (blank)



Perforation

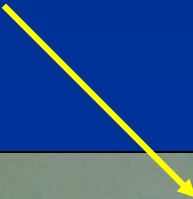


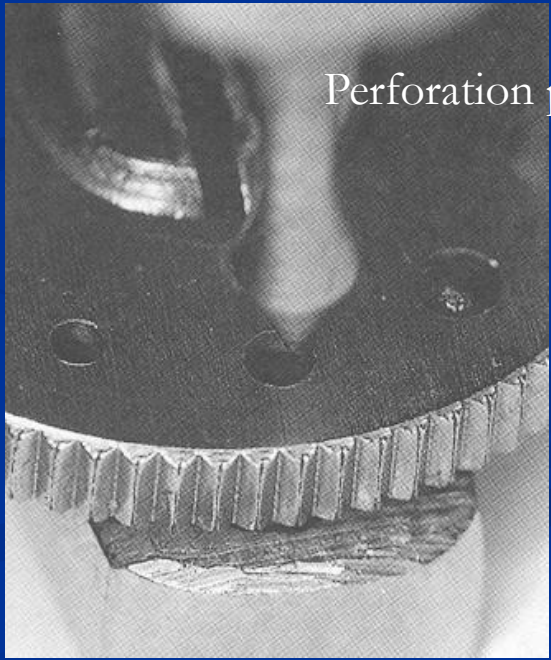
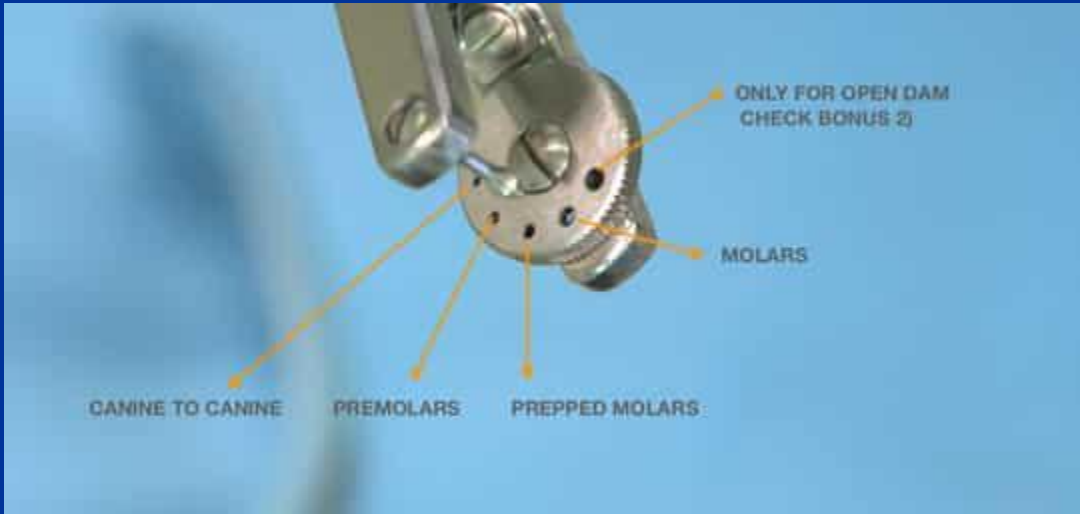
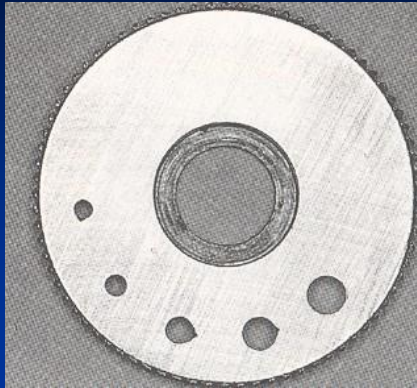
Round aperture

Ainsworth



Ivory





Perforation plate

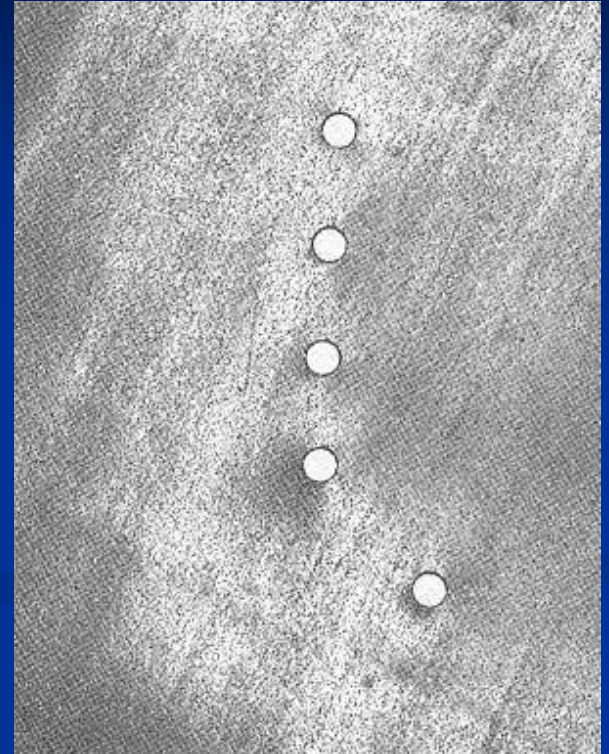
How big will the perforation be?

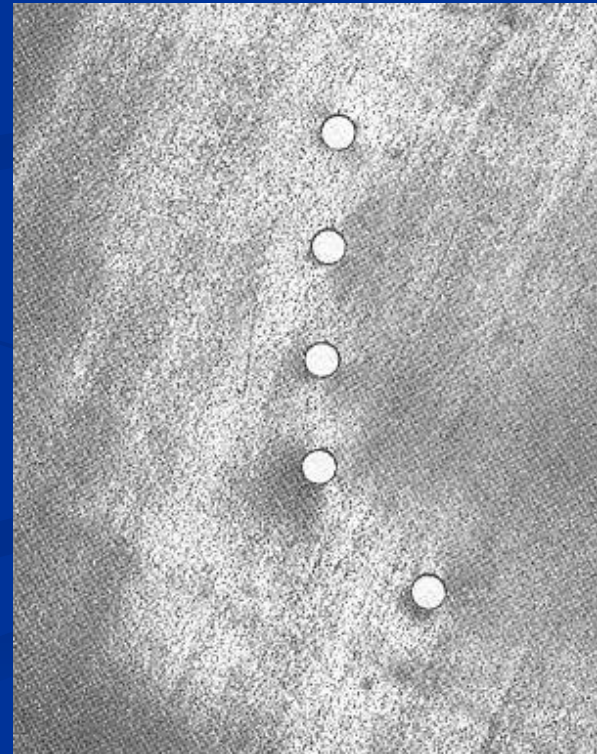
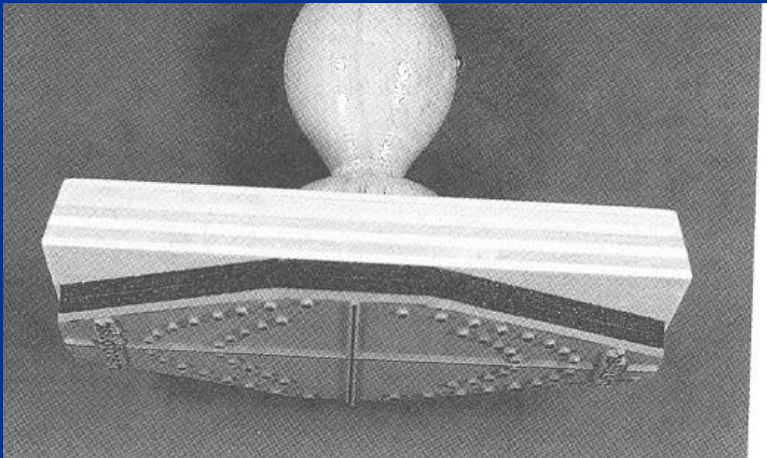
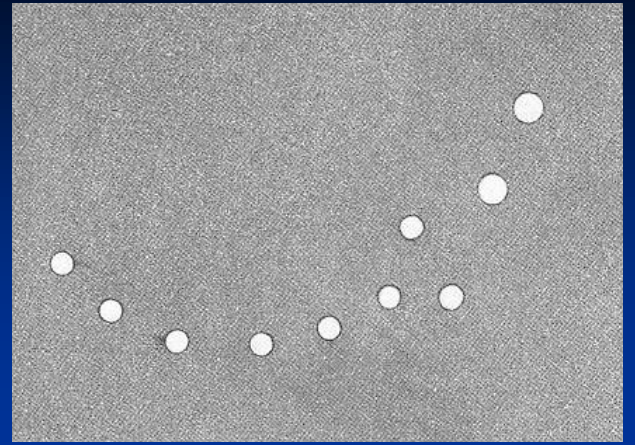
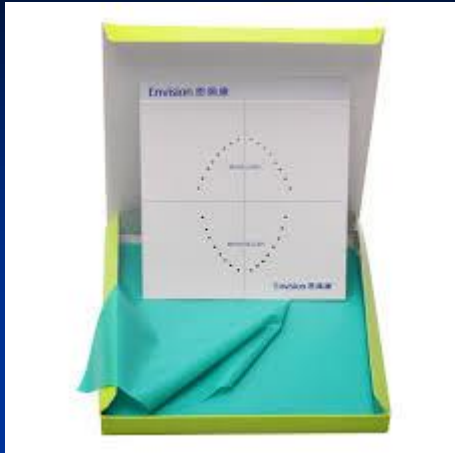
According to:

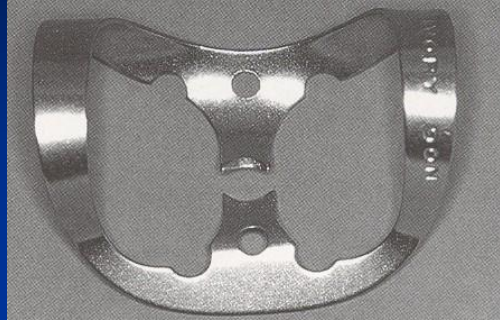
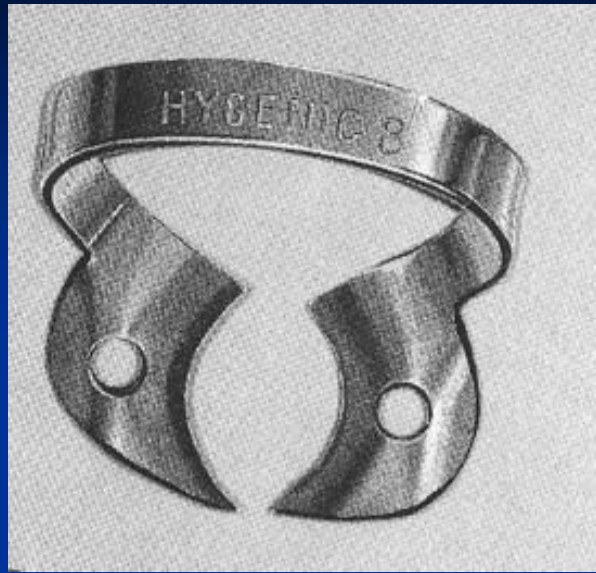
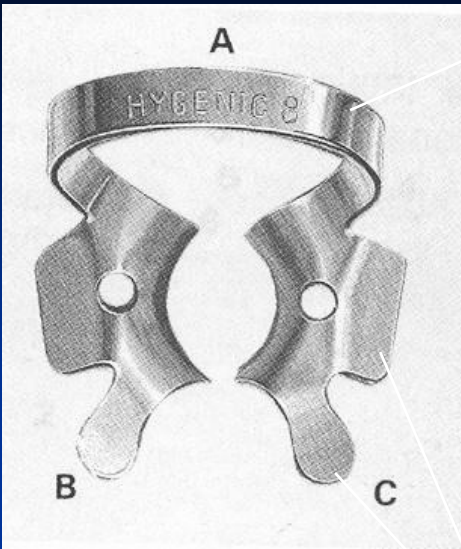
Size of the tooth

Thickness and kind of the rubber dam

Mode of application



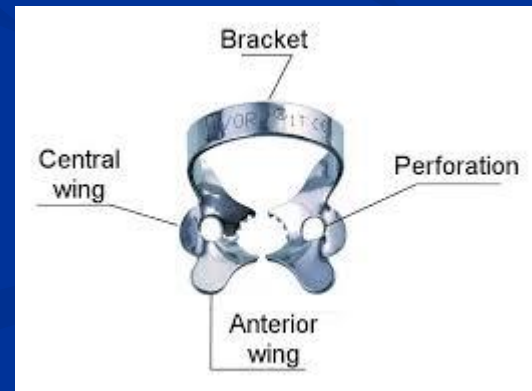
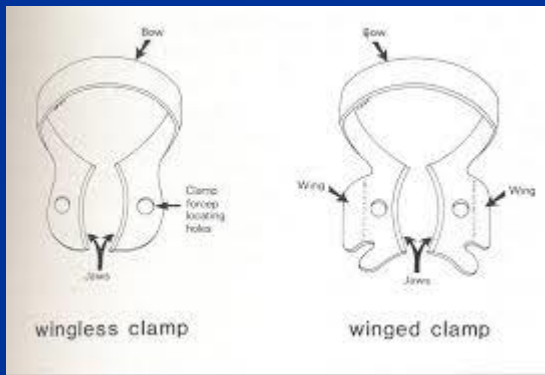
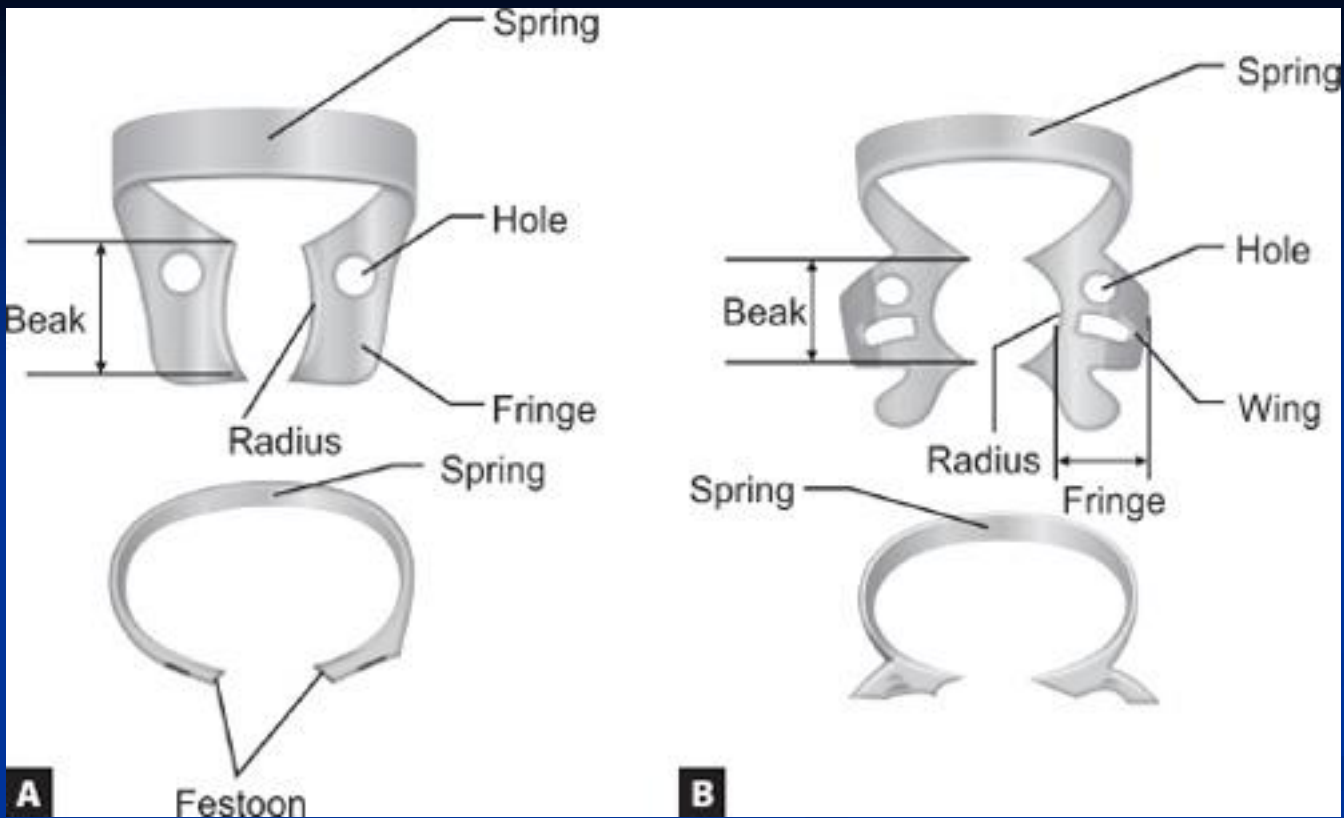




wings



Arch, wings,



FIESTA® Color Coded Matte Finish Winged and Wingless Clamps

ANTERIOR



MOLAR



Small lower Lower Lower

PREMOLAR



Large bicuspid Bicuspid



Upper Small upper Upper and lower

SERRATED JAWS

Serrations for improved retention



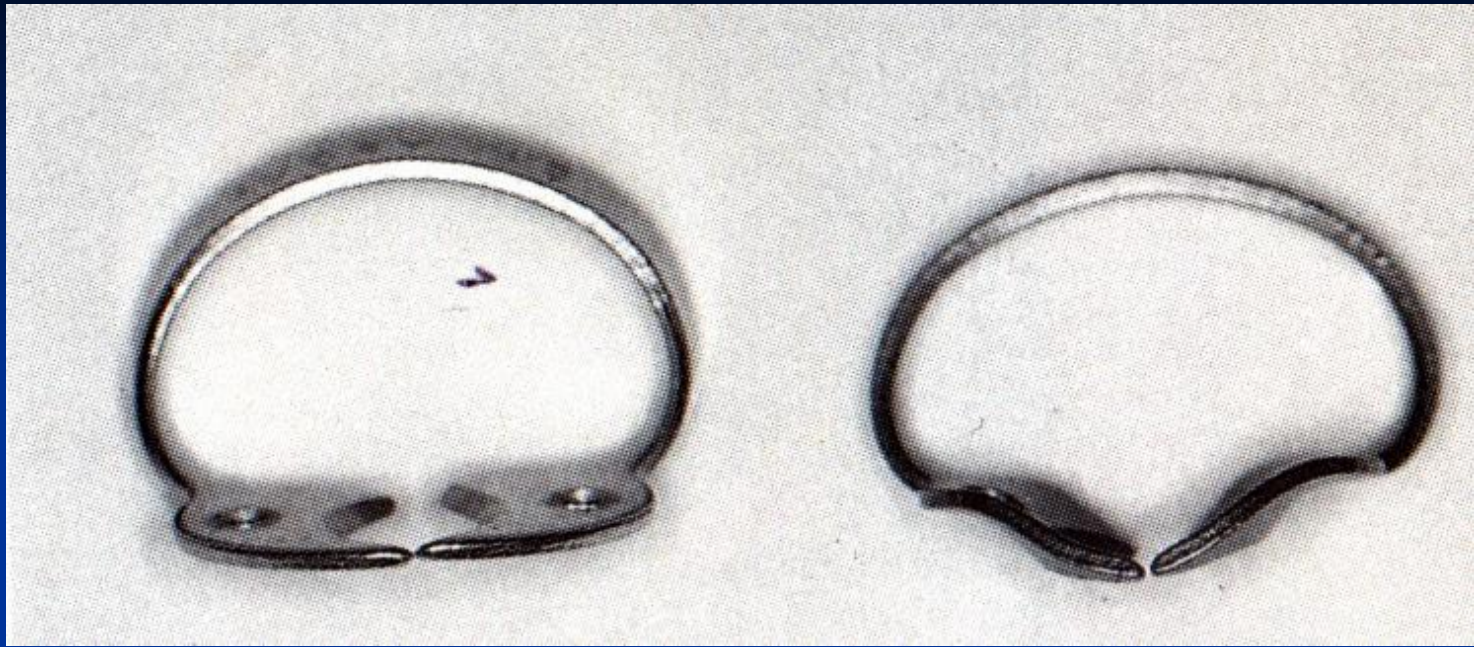
Lower right molars/
Upper left molars Lower left molars/
Upper right molars

MOLAR - SPECIAL USE

For irregularly shaped, structurally compromised or partially erupted molars

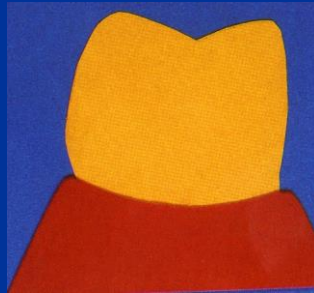


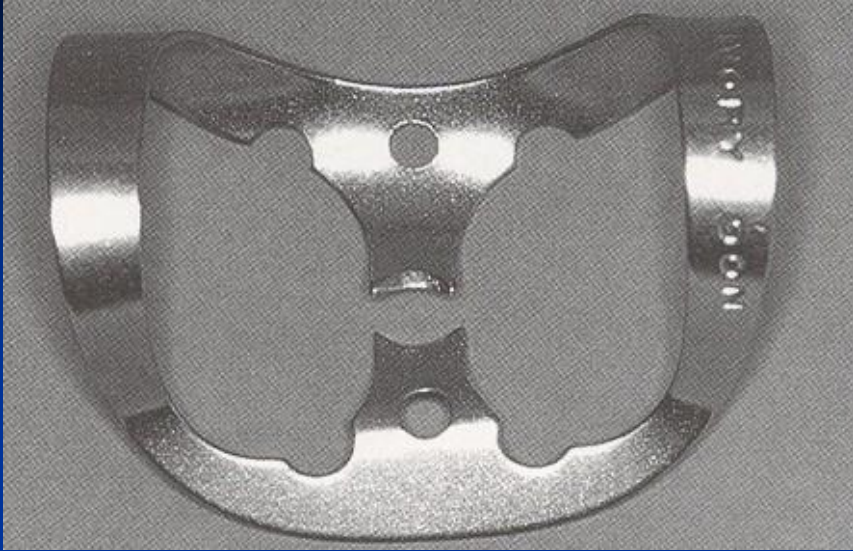
Small Large

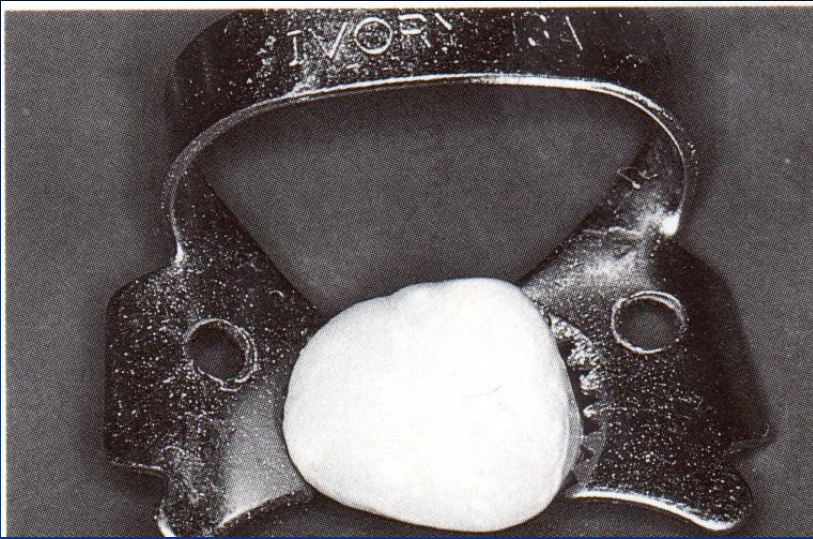


Clamps for retention

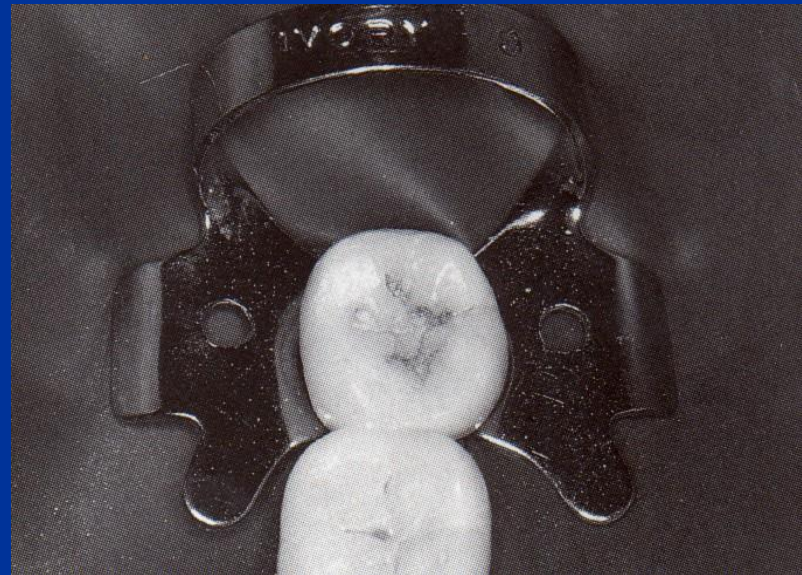
Clamps for retraction



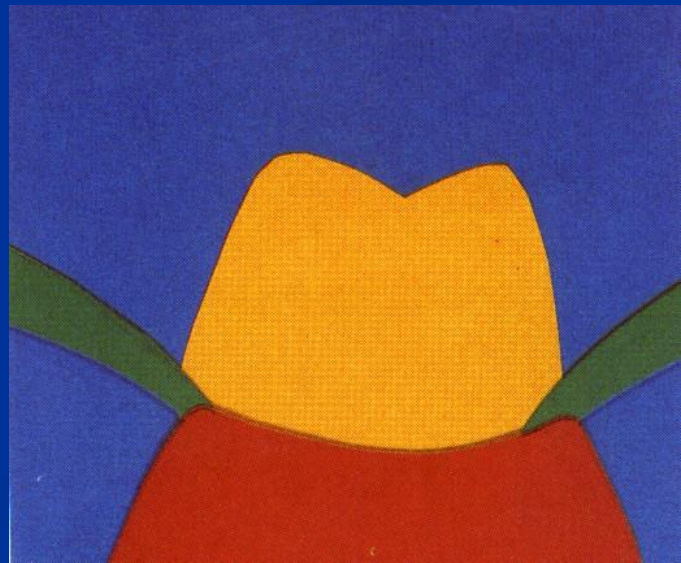
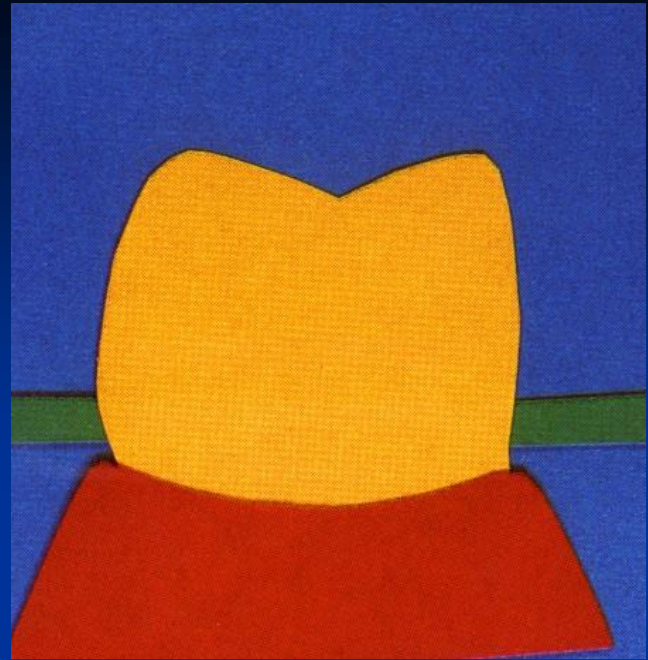
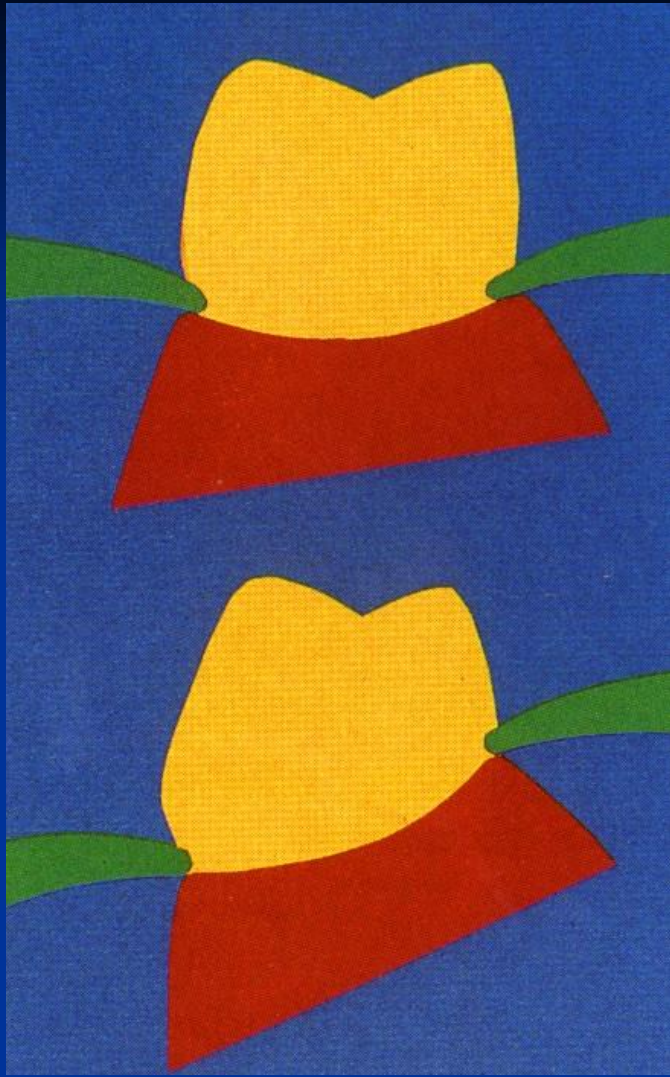


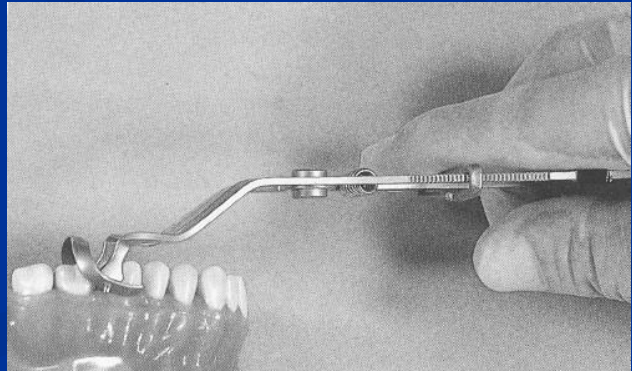
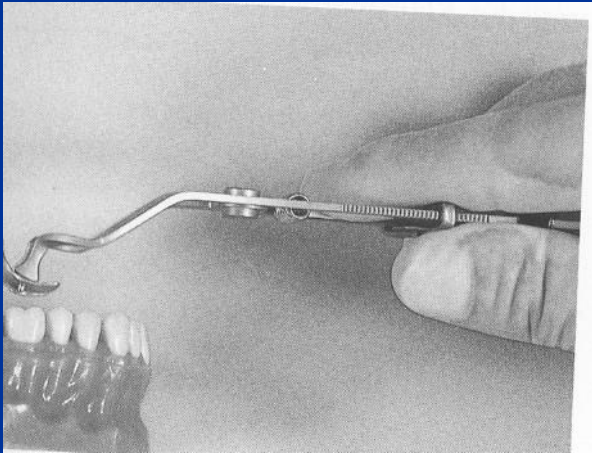
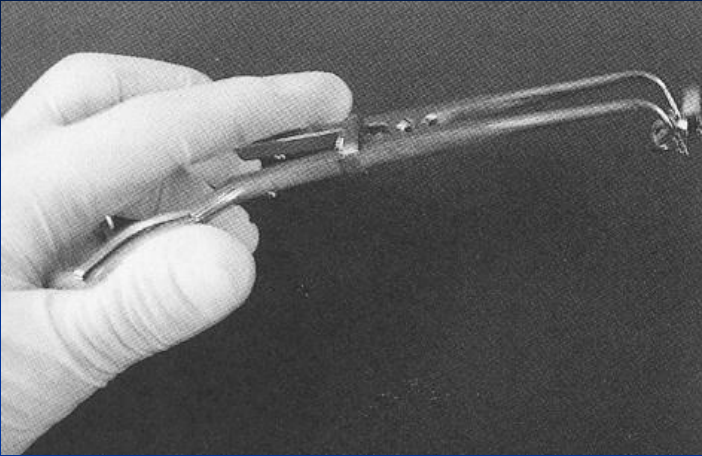


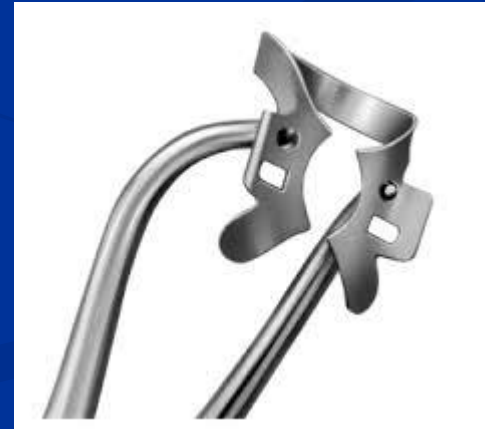
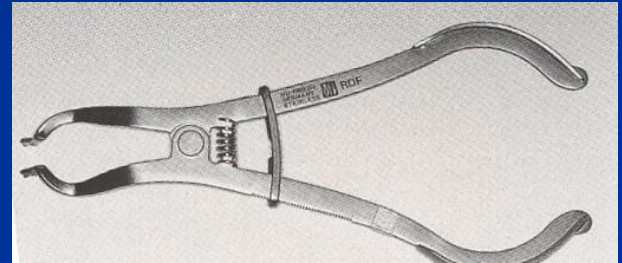
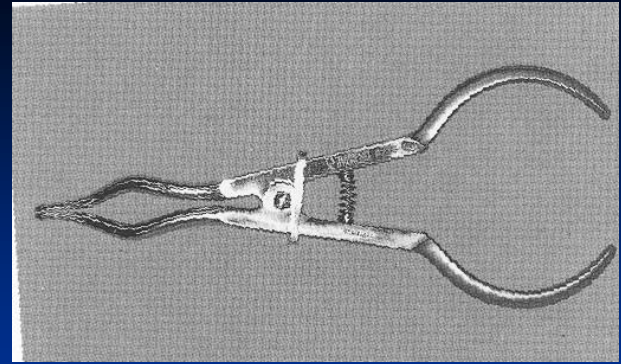
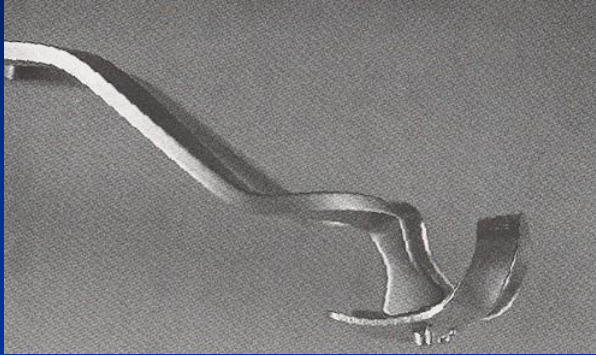
Contact – areal



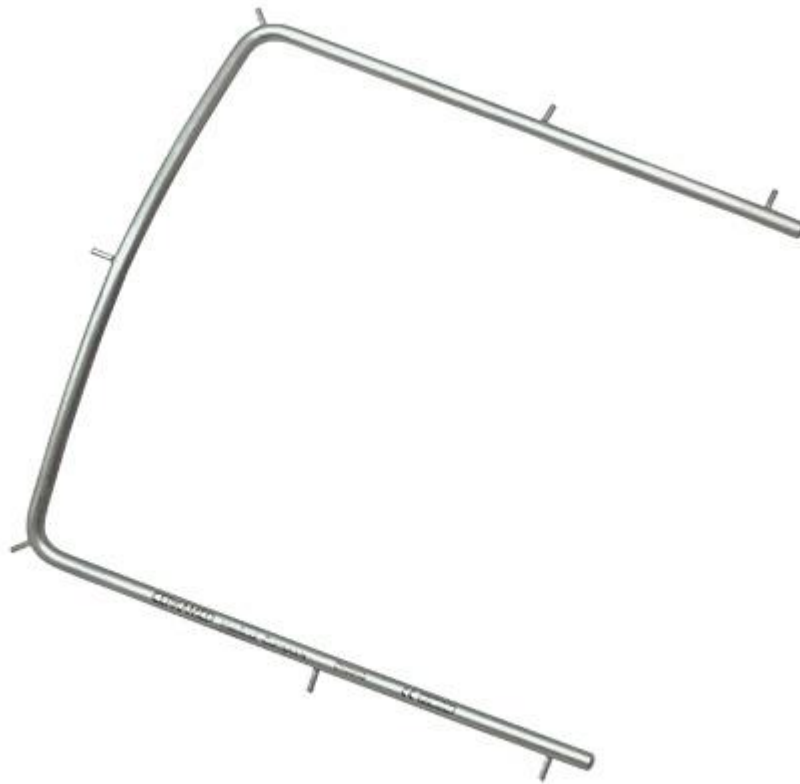
4 pointed



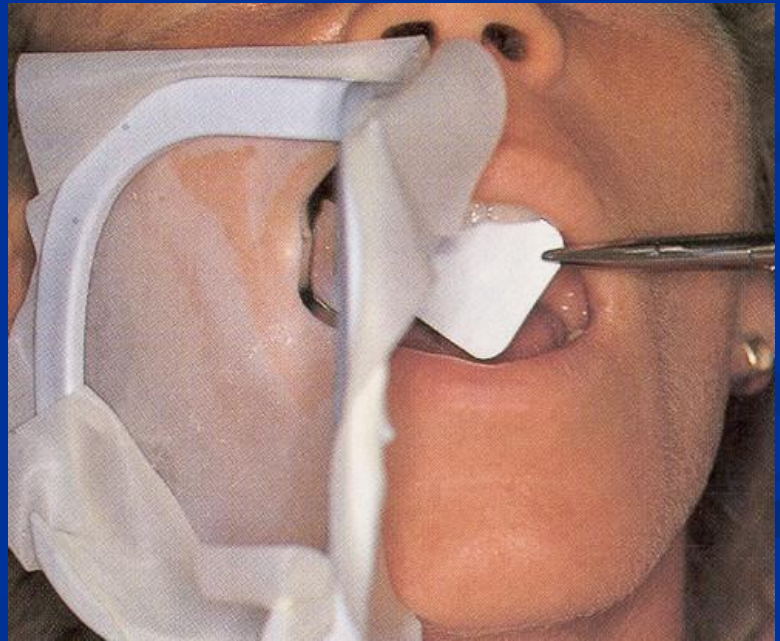


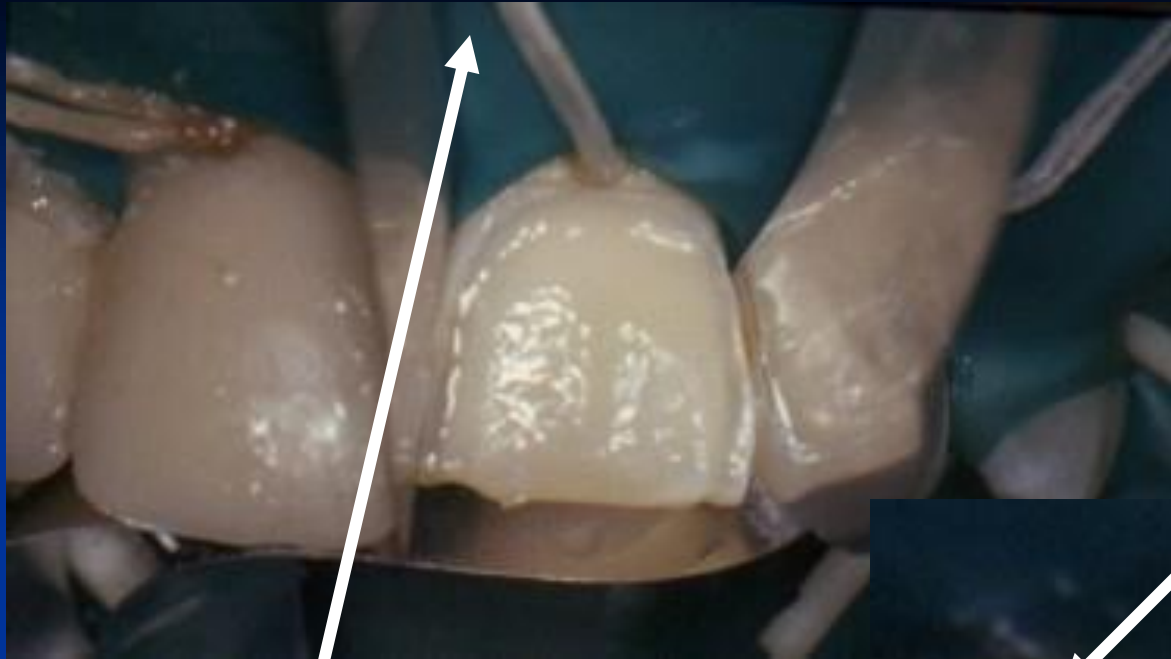


Rubber dam frame









**Latex rollers -
wedjets**

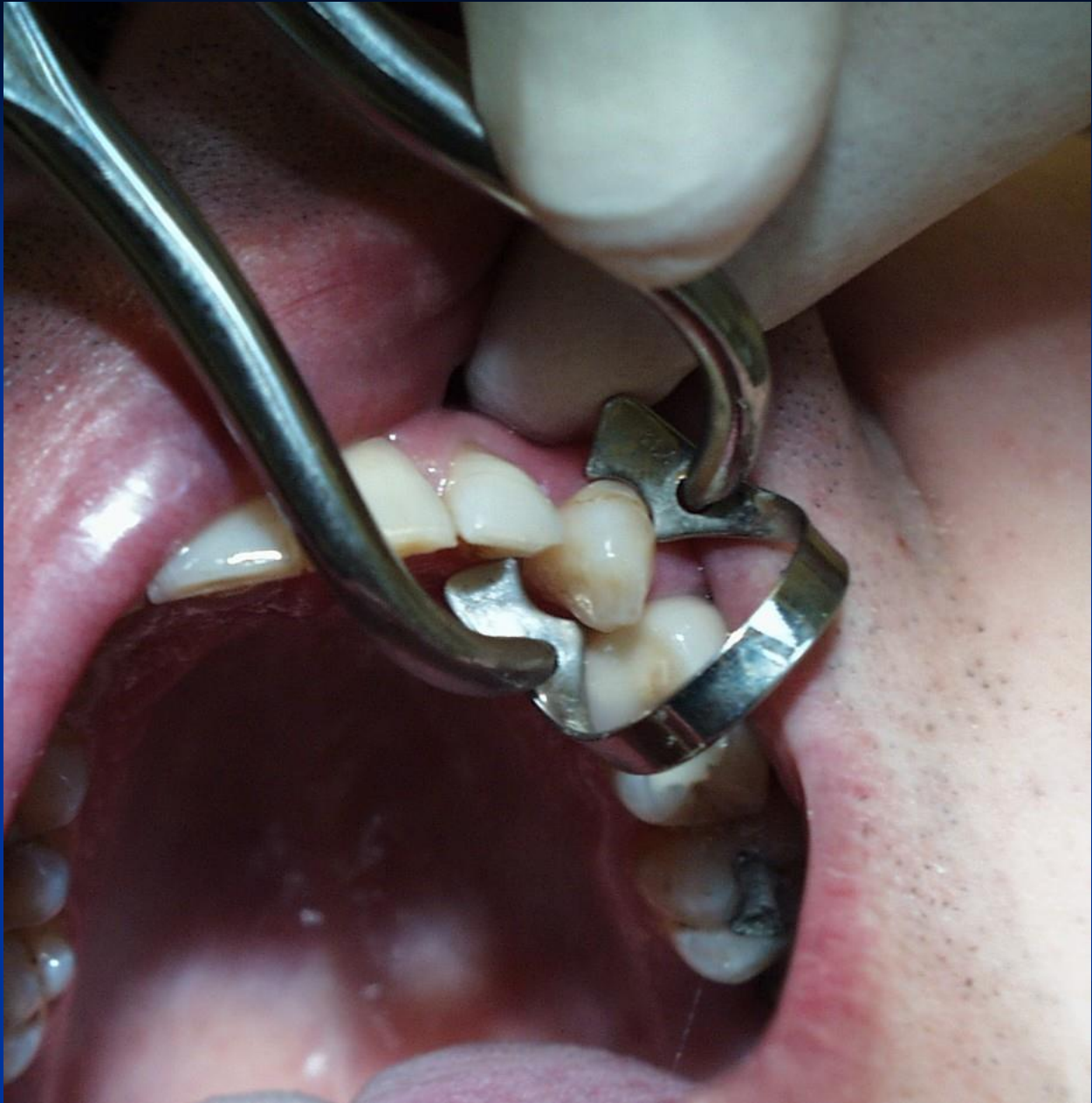


Ligatures

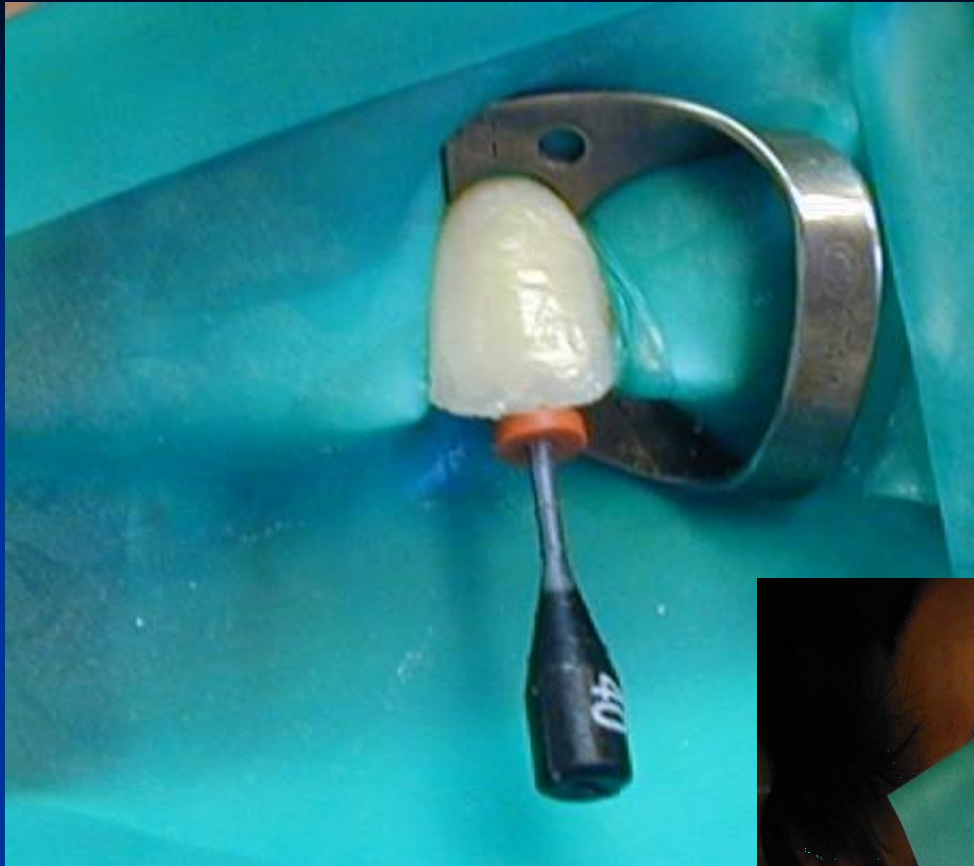








How many teeth
should be isolated?



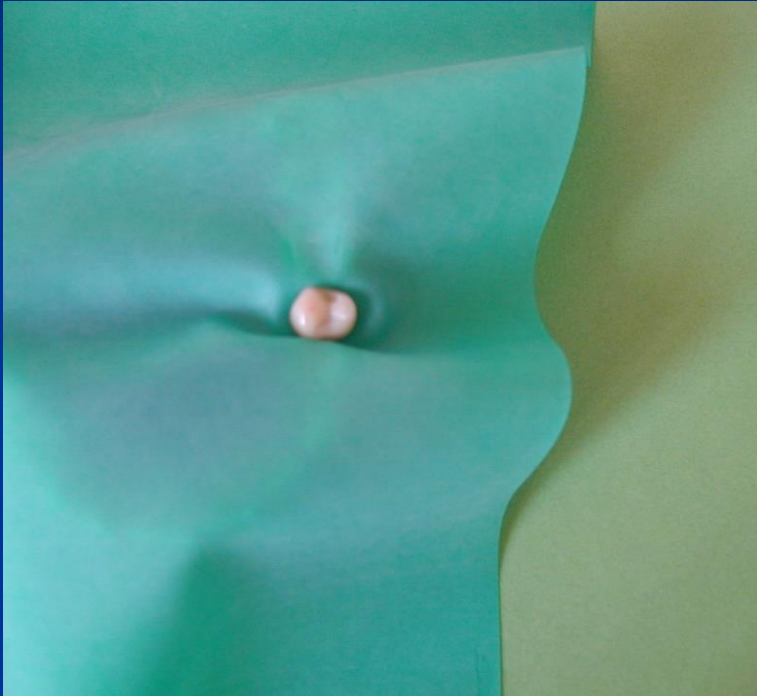




Mode of application

- Rubber first
- Clamp first
- Clamp and rubber dam together
- Application in seconds

Rubber first



Clamp first



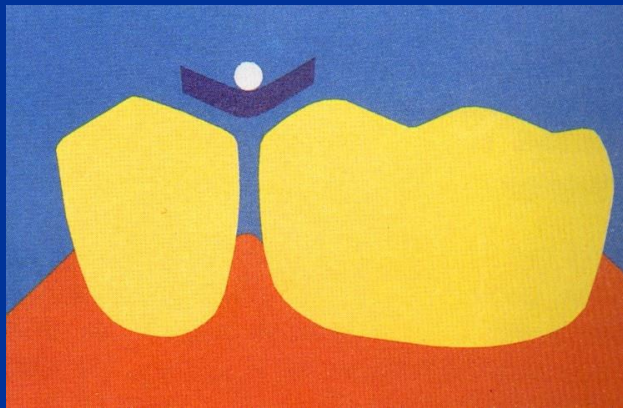
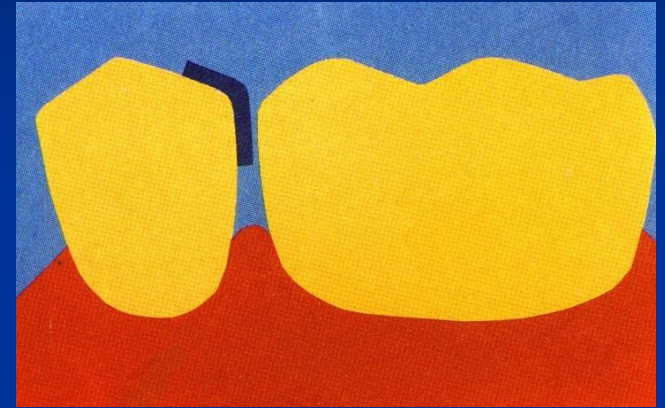
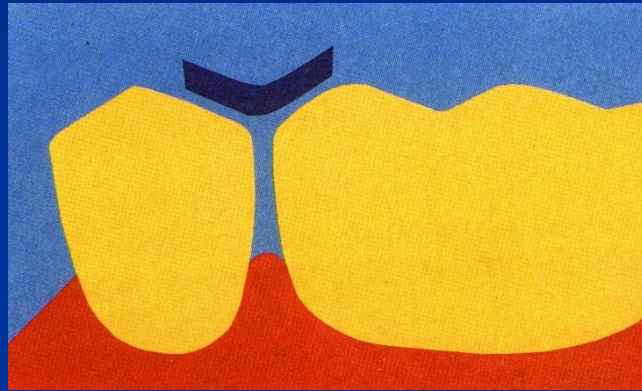
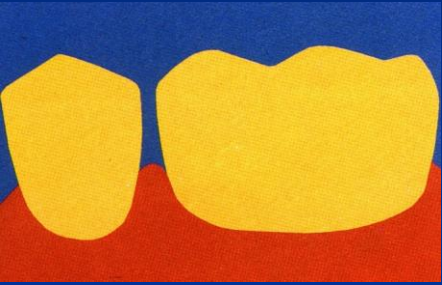
Rubber and clamp together

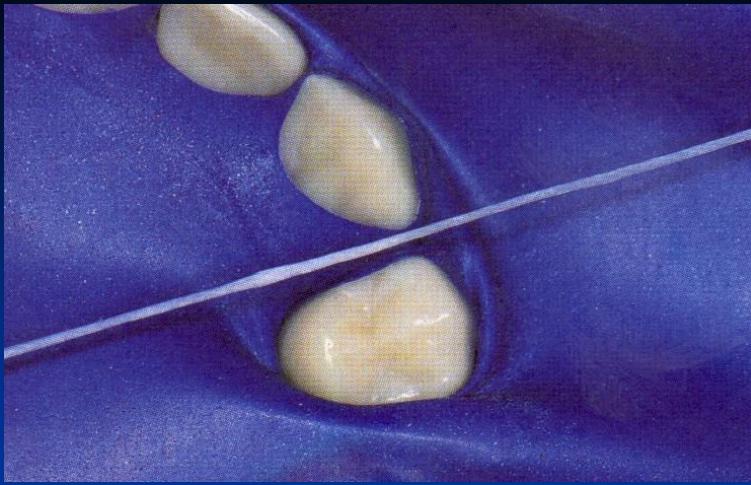


**Rubber, clamp and frame
together – application in seconds**

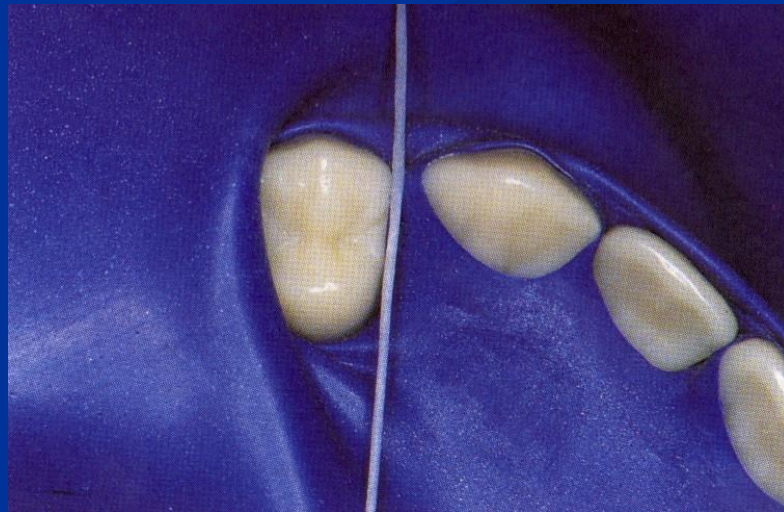


Interdental adaptation

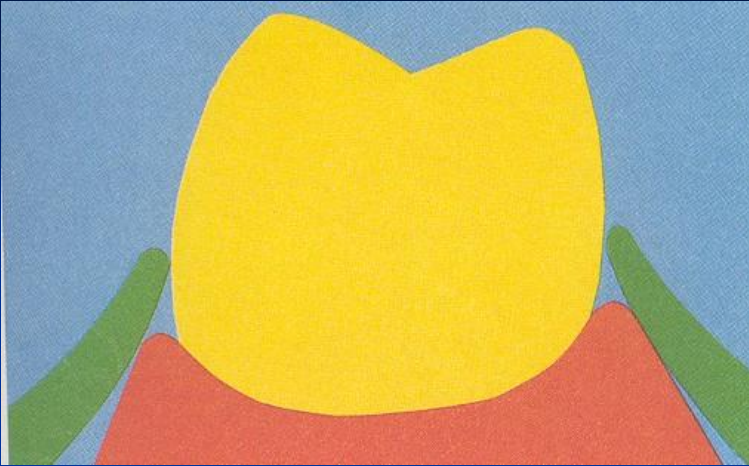




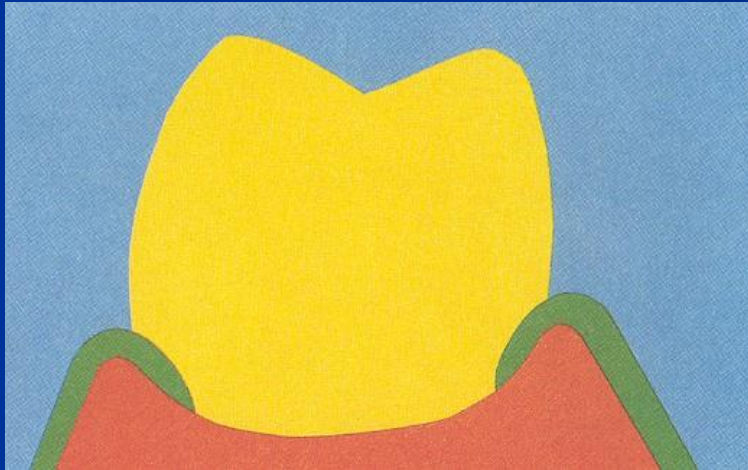
Interdentál adaptation

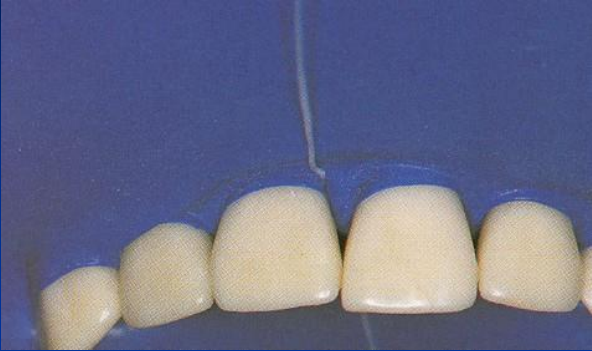


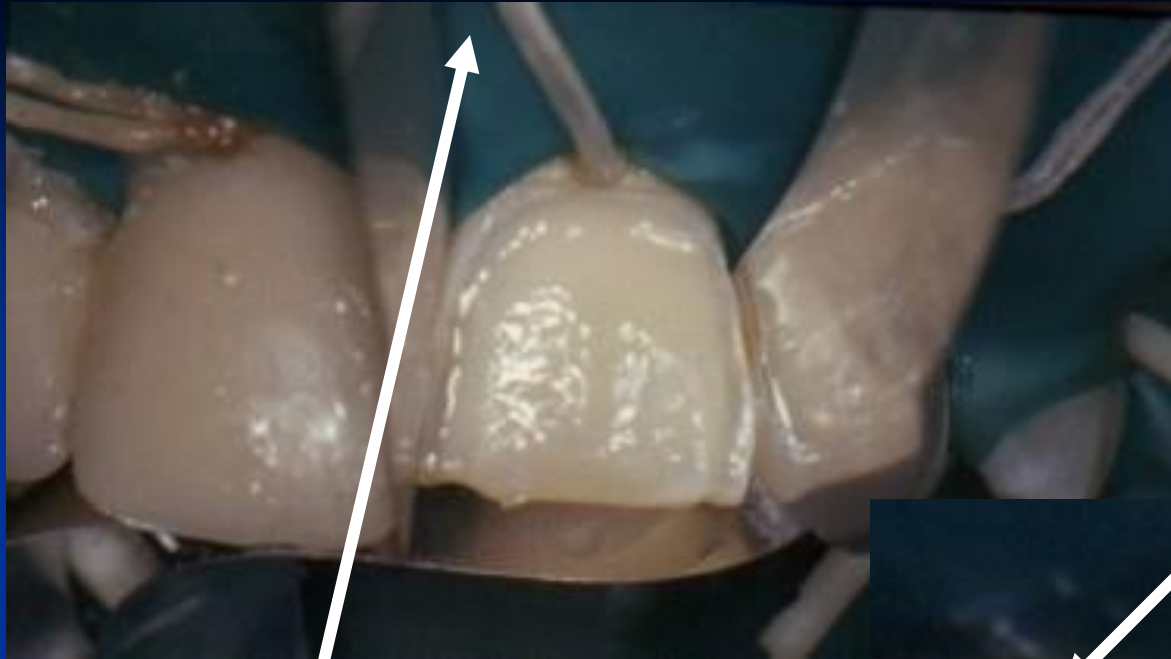




inversion







**Latex rollers -
wedjets**



Ligaturs

Thermoplastic impression material



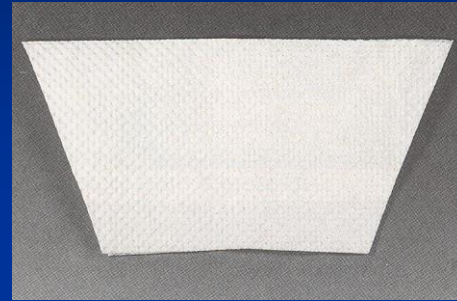
Elongation of the clinical crown before application of the clamp



Lubrication



Napkin



Modifications

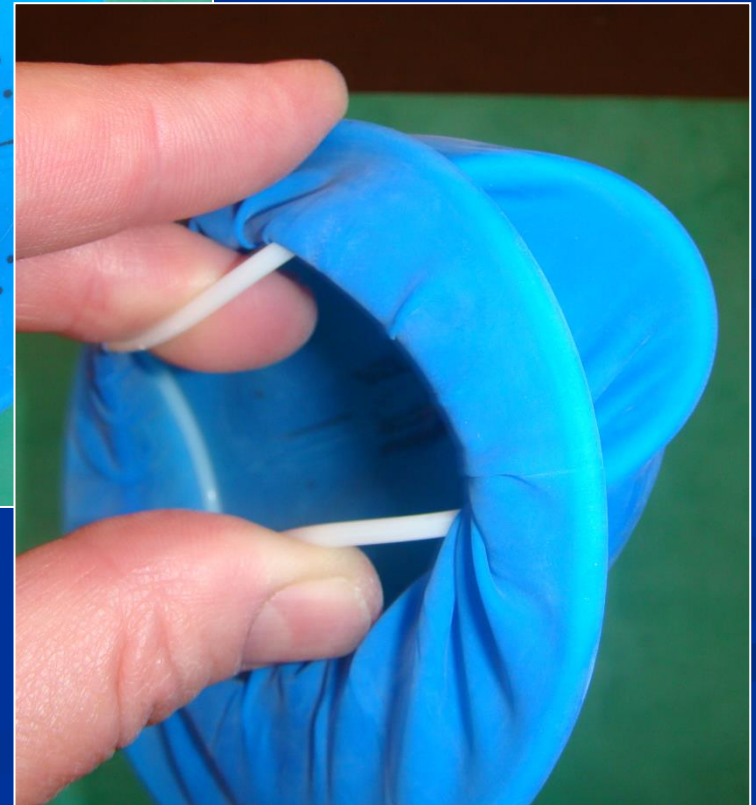
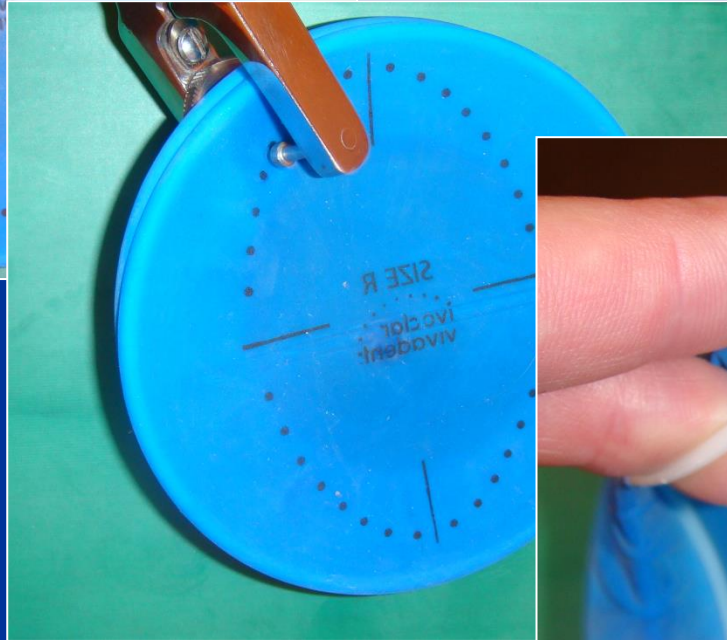
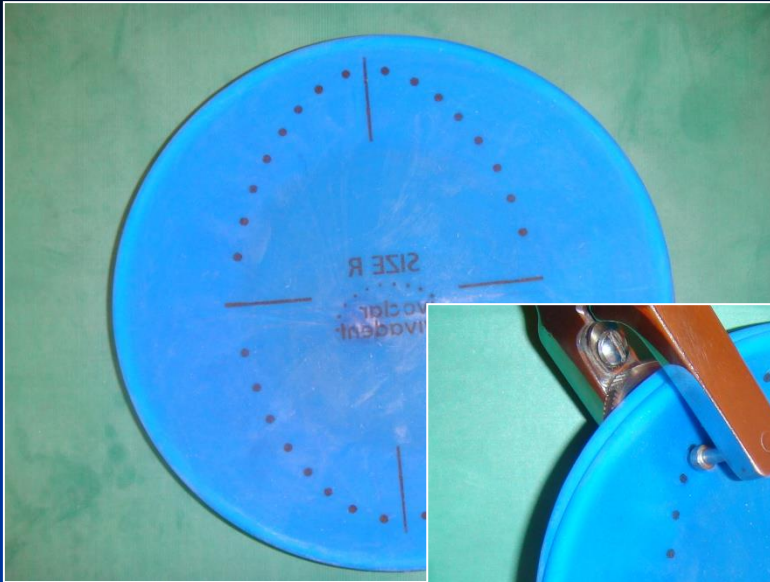
- Optidam
- Optradam
- Minidam

Optidam



lenka.roubalikova@tiscali.

tradam



lenka.roubalikova@tiscali.



Minidam

