

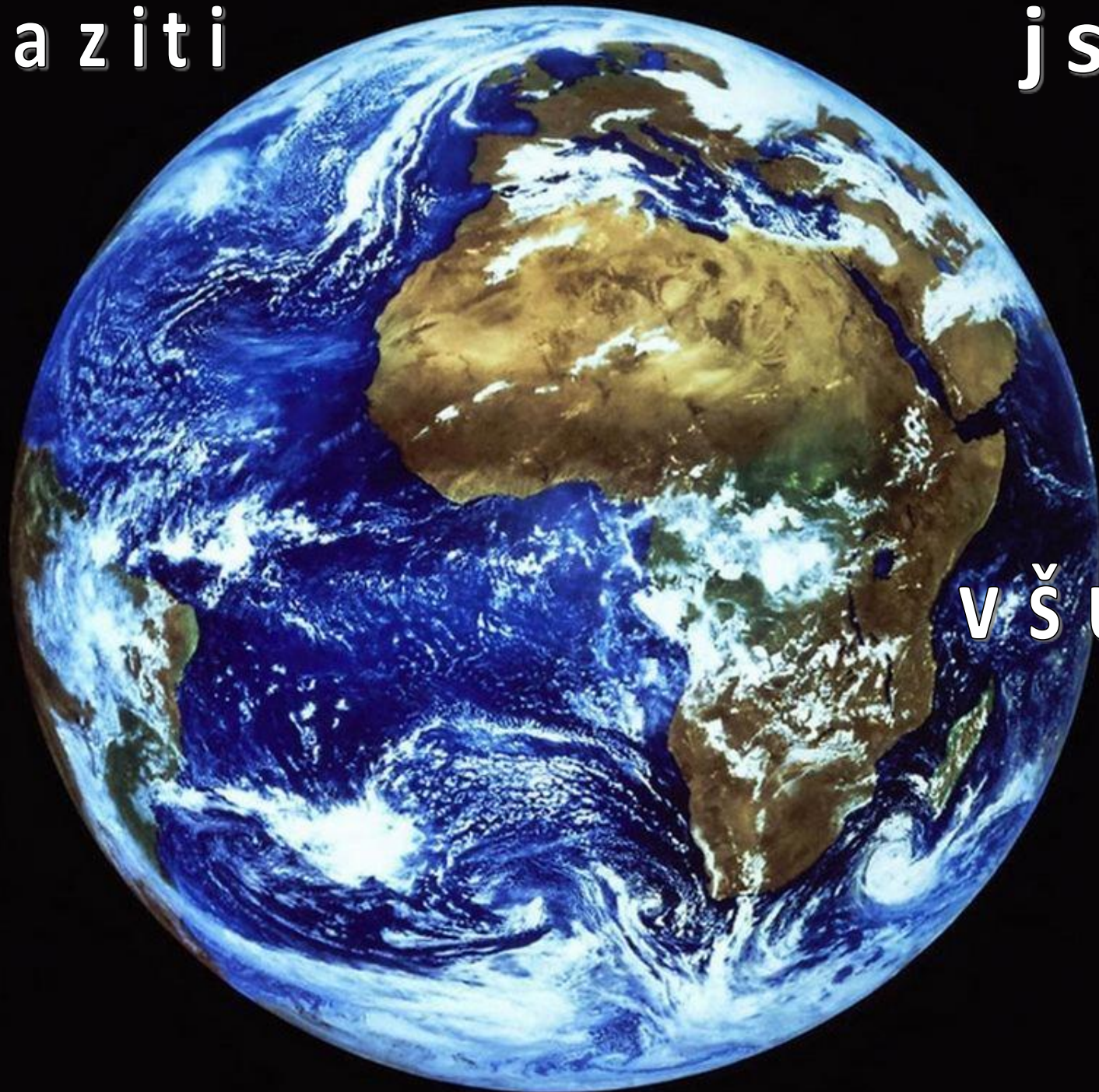
P A R A Z I T O L O G I E

P E T R A K U B Á Č K O V Á

O K M I F N B R N O

Paraziti

jsou

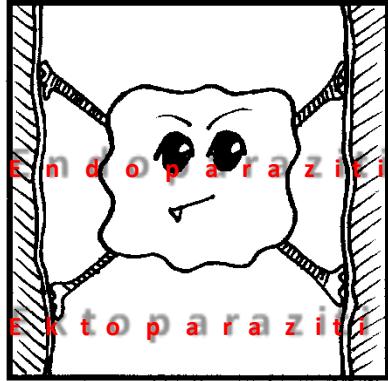


všude

Z p ů s o b y p ř e n o s u p a r a z i t ů



Rozdělení parazitů



Endoparaziti

Ektoparaziti

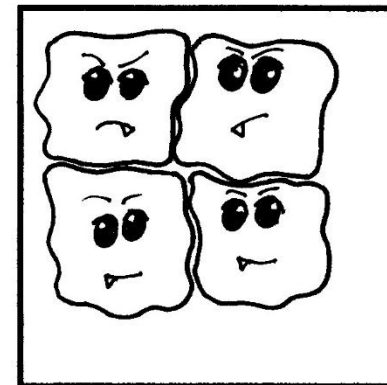
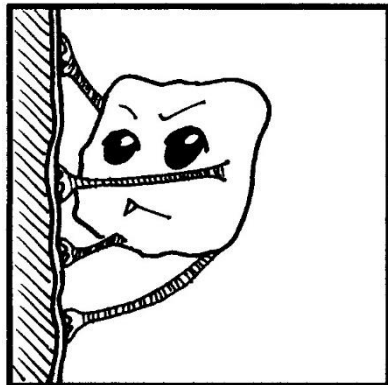
střevní
krevní
tkáňoví
dutinoví
roztoči
hmyz

X



Jednobuněční

Mnohobuněční



S t ř e v n í p a r a z i t i

j e d n o b u n ě č n í

K O K C I D I E

Iso sp o r a b e l l i

C y c l o s p o r a c a y e t a n e n s i s

C R Y P T O S P O R I D I U M S P P .



AMÉBY

Nepatogenní améby

E. hartmanni

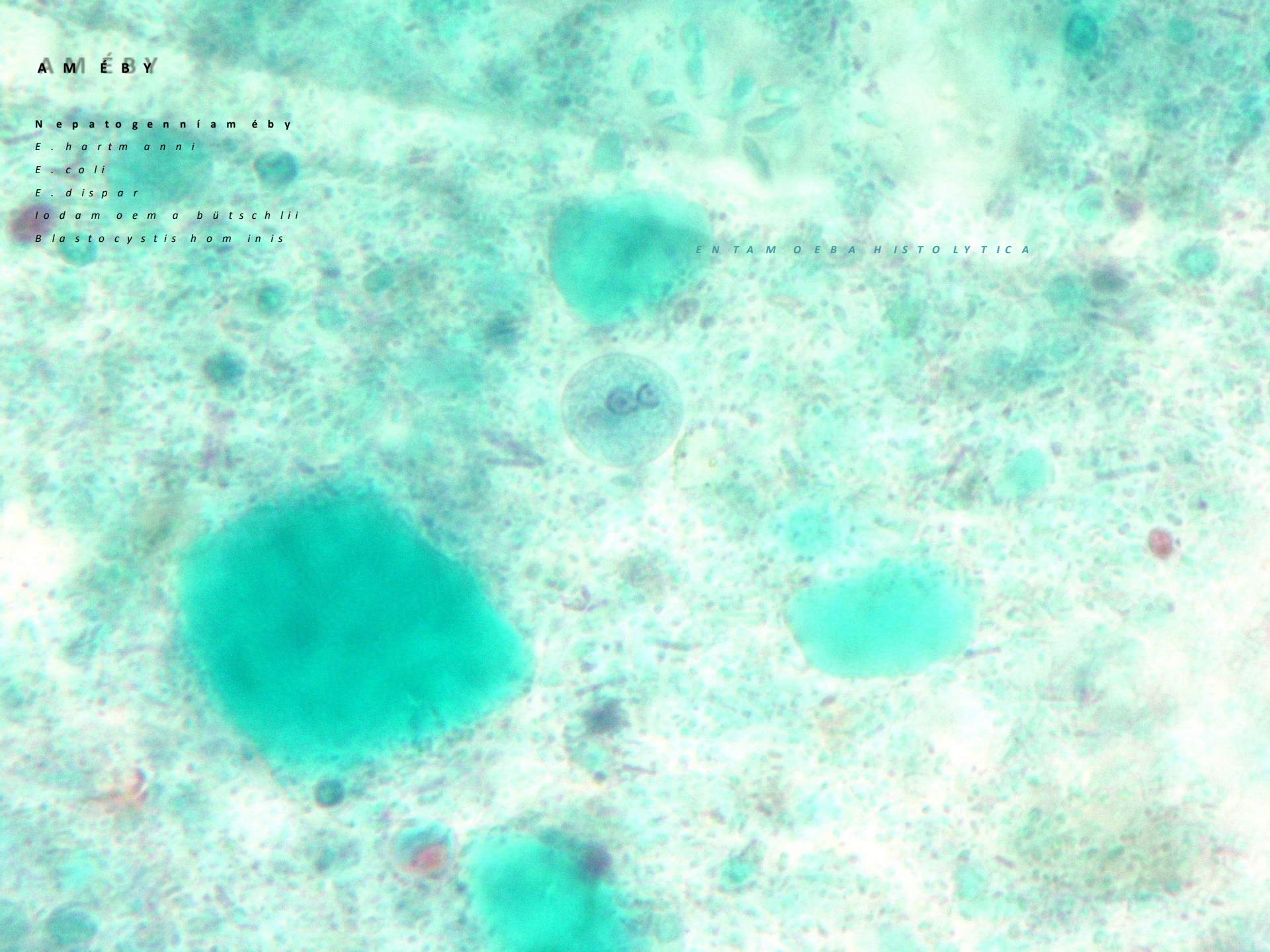
E. coli

E. dispar

Iodamoeba bütschlii

Blastocystis hominis

ENTAMOEBAHISTOLYTICA



BIČÍKOVCI

Entamoeba fragilis

Nepatogenní bičíkovci

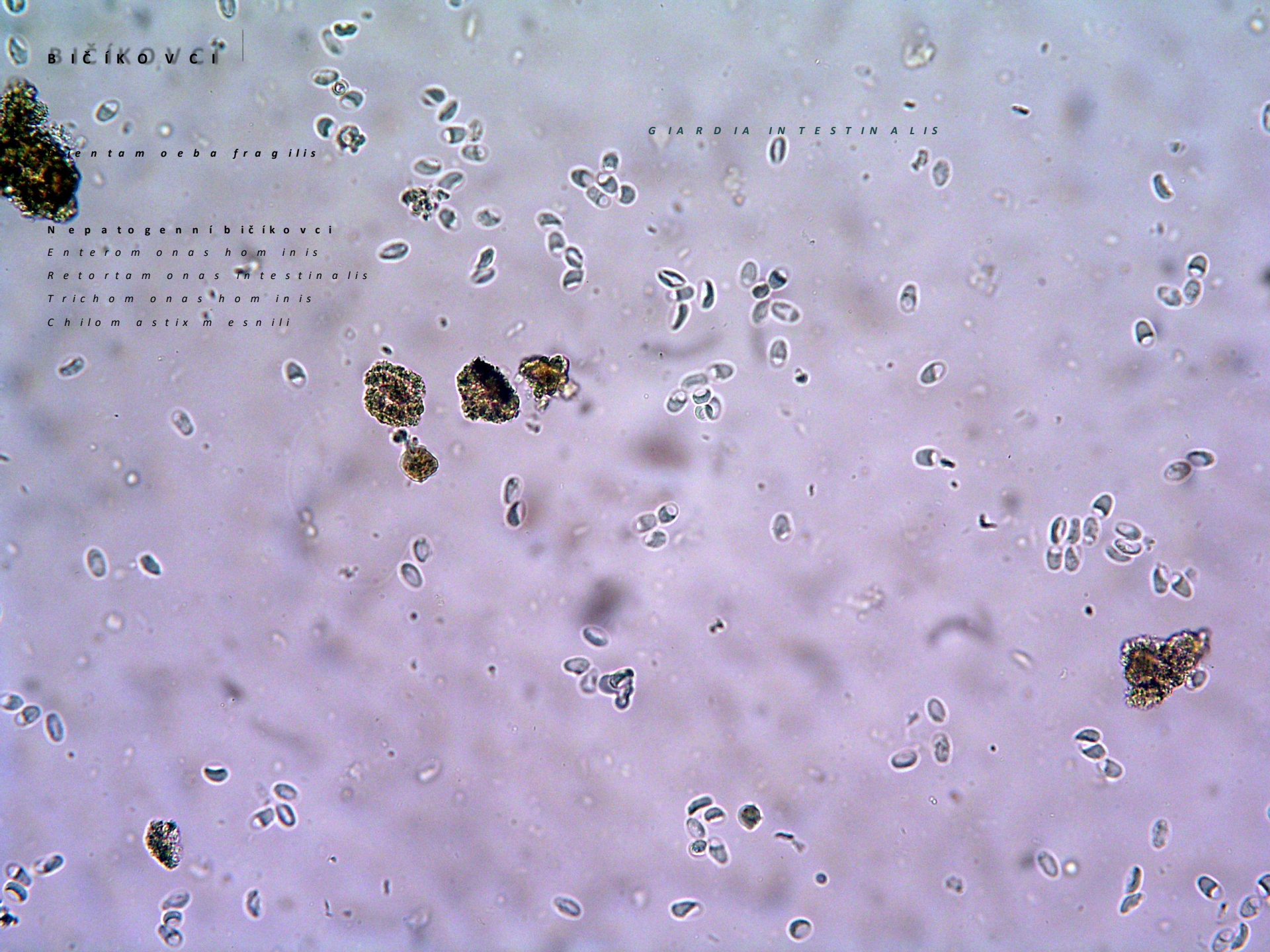
Enteromonas hominis

Retortamonas intestinalis

Trichomonas hominis

Chilomastix mesnili

GIARDIA INTESTINALIS



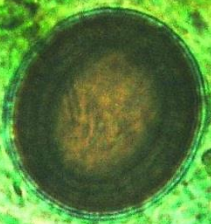
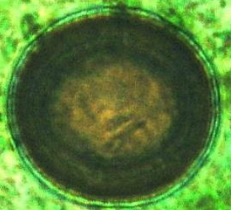
S t ř e v n í p a r a z i t i

m n o h o b u n ě č n í

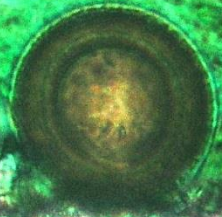


D I P H Y L L O D O T H R I U M D E N D R I T I C U M

T A S E M I N I C E



T A E N I A S P

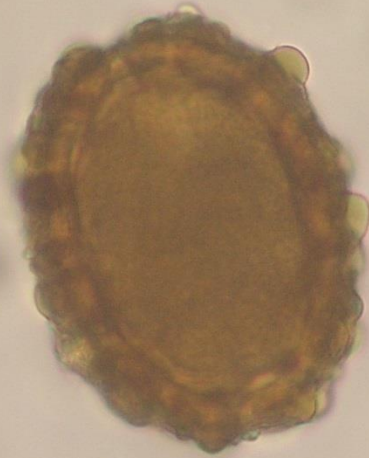


H L Í S T I C E

ENTEROBIUS VERMICULARIS



A S C A R I S L U M B R I C O I D E S



M O T O L I C E

Schistosoma mansoni

Fasciola hepatica

Fasciolopsis buski

exotické motolice, které se u nás nevyskytují, pouze jako ojedinelý import většinou z Asie, po požití syrových nebo málo tepelně upravených vodních živočichů nebo rostlin, s výjimkou *S. mansoni*, která proniká aktivně přes neporušenou kůži



Diagnostika

střevních parazitů

Přímý průkaz

m a t e r i á l :

s t o l i c e - v a j í č k a č e r v ů , c y s t y p r v o k ů

b i o p s i e - *E. histolytica*

M I K R O S K O P I E - v n a t i v n í m p r e p a r á t u n e b o p o k o n c e n t e r a c i

- v b a r v e n é m p r e p a r á t u (G i e m s a , t r i c h r o m , M i l á č e k)

P R Ů K A Z A N T I G E N U (g i a r d i e , k r y p t o s p o r i d i a)

P C R (e n t a m é b y)

K U L T I V A C E (e n t a m é b y)

M A K R O S K O P I C K Ý (č l á n k y t a s e m n i c e , š k r k a v k y)

Neřímý průkaz

P R Ů K A Z P R O T I L Á T E K (*E. histolytica*)

Z O B R A Z O V A C Í M E T O D Y - C T , U Z

K r e v n í p a r a z i t i

p ř e h l e d

A F R I C K É T R Y P A N O S O M Ó Z Y

o n e m o c n ě n í: „ s p a v á n e m o c “

v ý s k y t : v l y m f ě , k r e v n í m ř e č i š t í , v m o z k o m í š n í m m o k u (e x t r a c e l u l á r n ě)

T R Y P A N O S O M A A M E R I C K Á

v ý s k y t : v k r e v n í m ř e č i š t í i v e t k á n í c h

L E I S H M A N I E

v ý s k y t : b í l é k r v í n k ý

o n e m o c n ě n í: v i s c e r á l n í , k o ž n í l e i s h m a n i ó z a

P L A S M O D I A , B A B E S I E


v ý s k y t : č e r v e n é k r v í n k y

o n e m o c n ě n í: m a l á r i e , b a b e s i ó z a

K r e v n í p a r a z i t i

m i m o b u n ě č n í

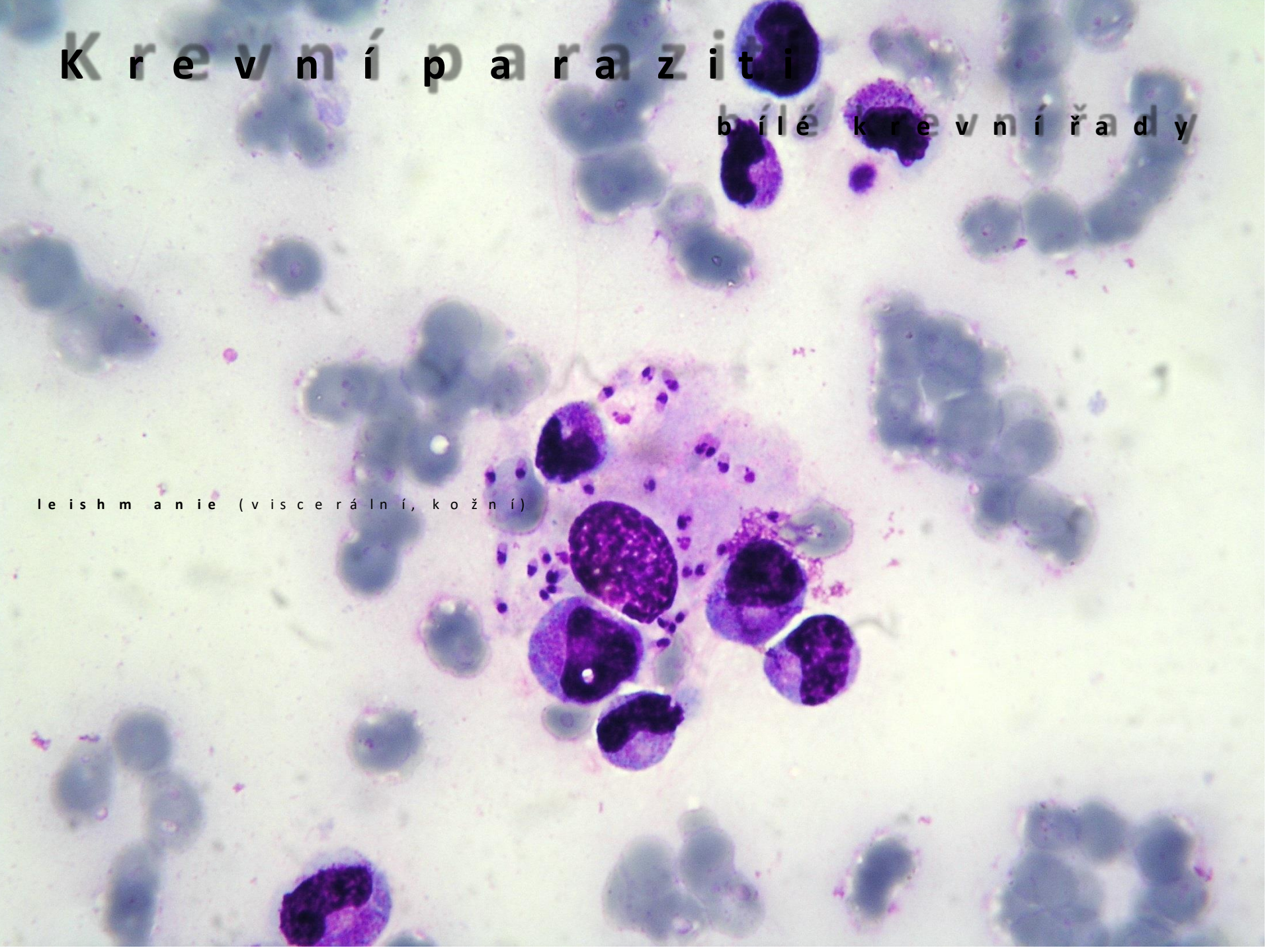
t r y p a n o s o m y (a f r i c k á , a m e r i c k á)

A microscopic image of a blood smear stained with Giemsa stain. The background is a light blue-purple color. Numerous dark purple, oval-shaped structures are scattered throughout, representing various blood parasites. Some of these structures are arranged in small clusters or chains. There are also several elongated, worm-like structures with distinct heads and tails, characteristic of trypanosomes. The overall appearance is that of a complex parasitic infection in a blood smear.

K r e v n í p a r a z i t i

b í l é k r e v n í ř a d y

l e i s h m a n i e (v i s c e r á l n í , k o ž n í)

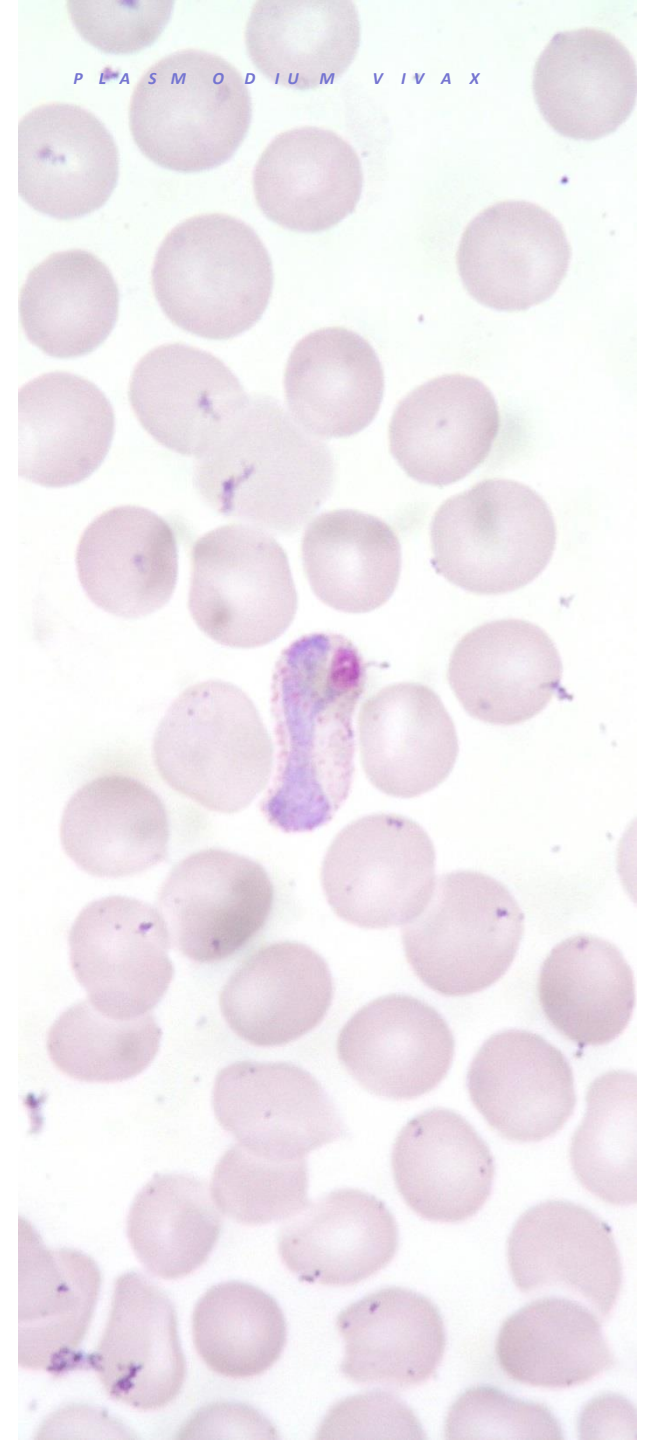
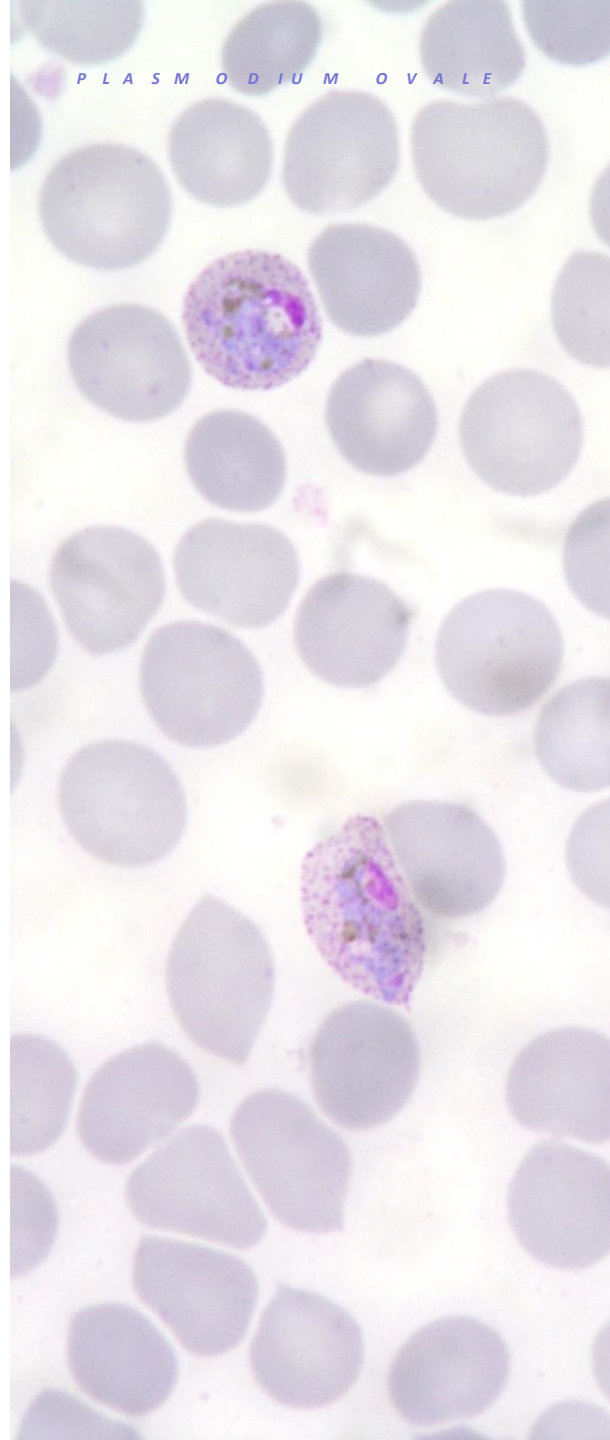
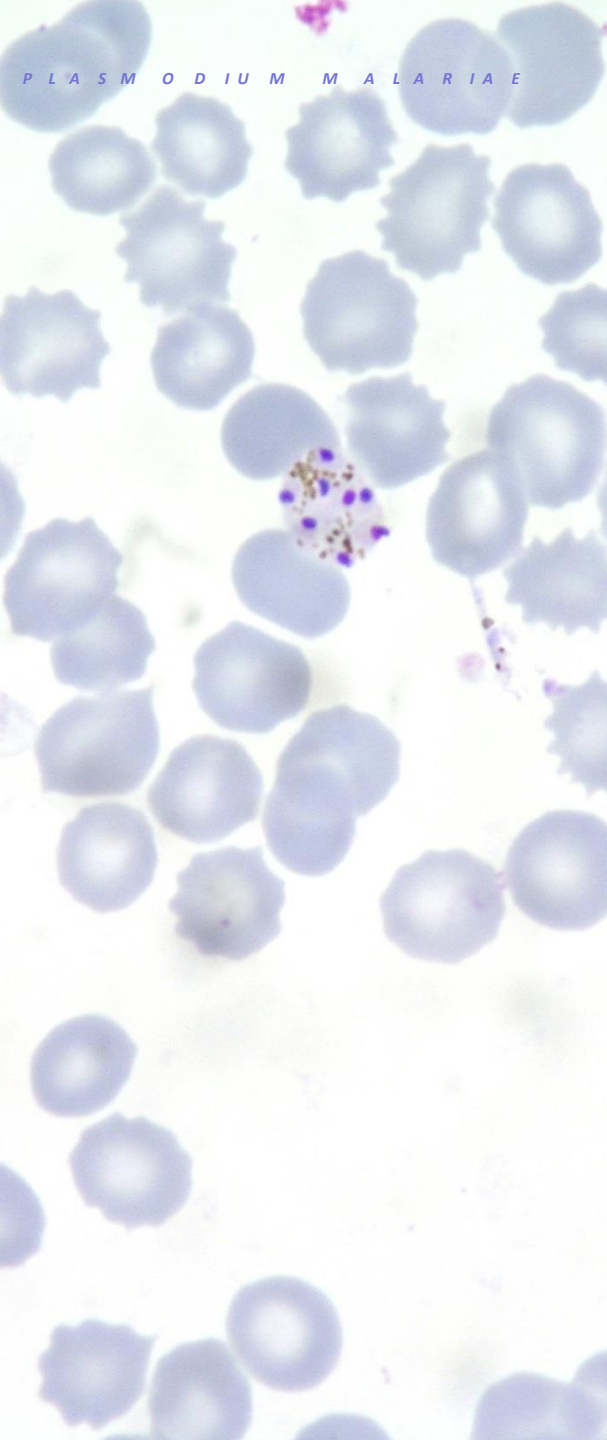


K r e v n í p a r a z i t i

č e r v e n é k r e v n í ř a d y

P L A S M O D I U M F A L C I P A R U M





Diagnostika

krevních parazitů

Přímý průkaz

M I K R O S K O P I E

m a t e r i á l :

p e r i f e r n í k r e v – t l u s t á k a p k a , t e n k ý r o z t ě r

p u n k t á t z k o s t n í d ř e n ě

b i o p s i e

b a r v e n í G i e m s a - R o m a n o w s k i

S T A N O V E N Í P A R A Z I T Ě M I E

z v ě t š e n í 1 0 0 x

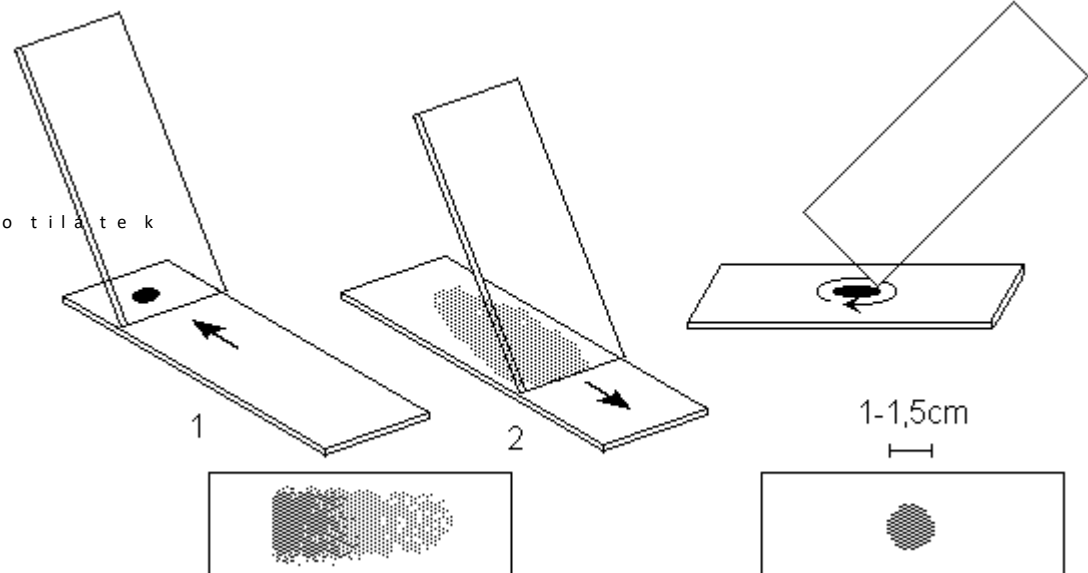
p a r a z i t ě m i e v t e n k ě m r o z t ě r u

- p o ě t p a r a z i t ů n a 1 0 0 0 0 e r y t r o c y t ů

P C R

Nepřímý průkaz

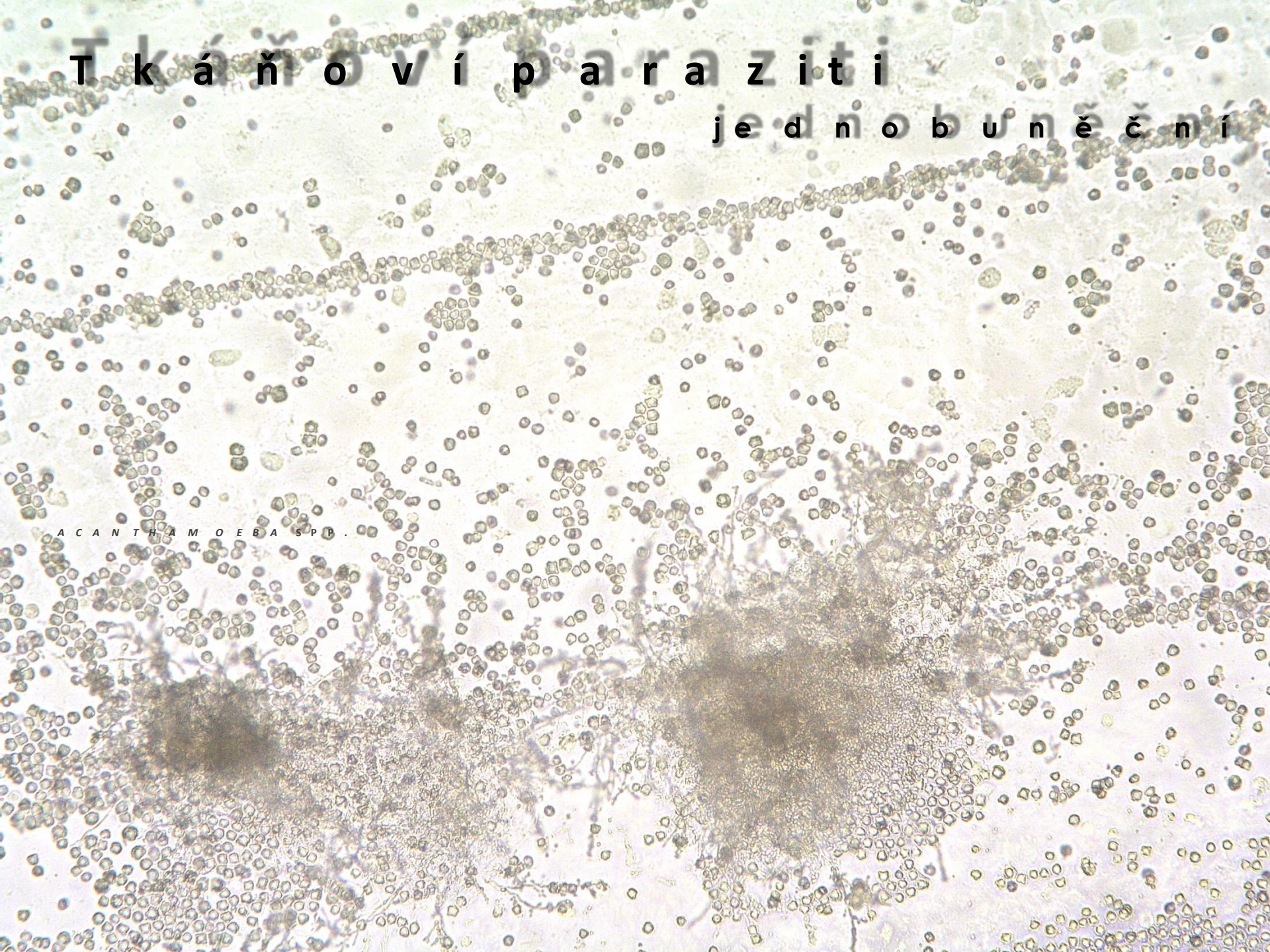
v y š e t ř e n í s ě r a n a p ř í t o m n o s t p r o t i l á t e k



T k á ň o v í p a r a z i t i

j e d n o b u n ě č n í

A C A N T H A M O E B A S P B .



25.02.2014 14:59:38



27.02.2014 11:20:56



T k á ň o v í p a r a z i t i

m n o h o b u n ě č n í

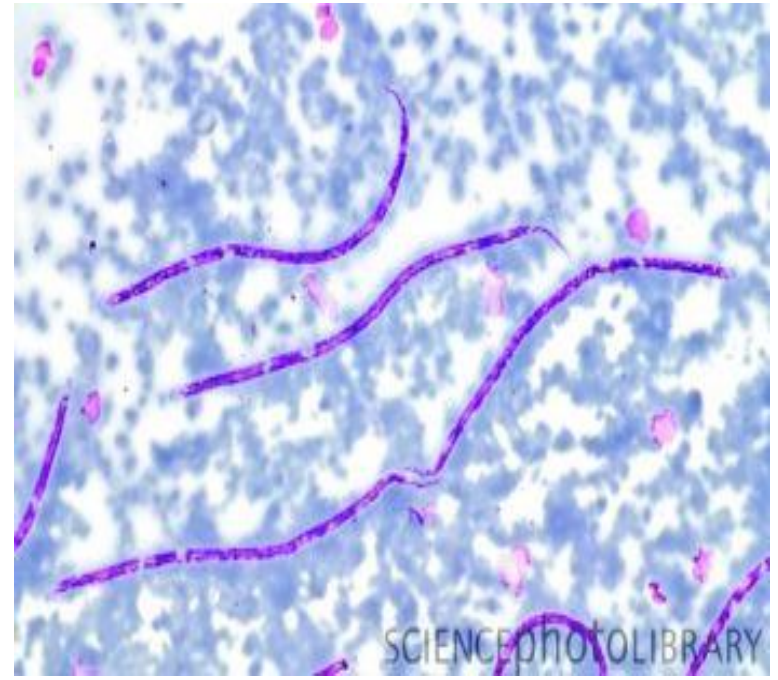
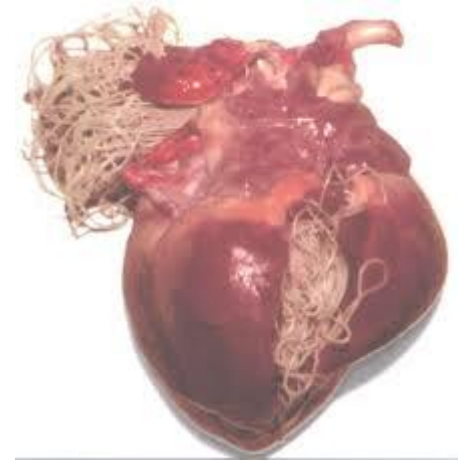


O E S T R U S O V I S

200 µm

200 µm

Trichinella spiralis
Toxocara canis, T. cati
Dracunculus medinensis
Wuchereria bancrofti
Brugia malay, B. timori
Loa loa
Onchocerca volvulus
Dirofilaria immitis, D. repens



Diagnostika

tkáňových parazitů

Přímý průkaz

M I K R O S K O P I E

K U L T I V A C E (a k a n t a m é b y)

P C R

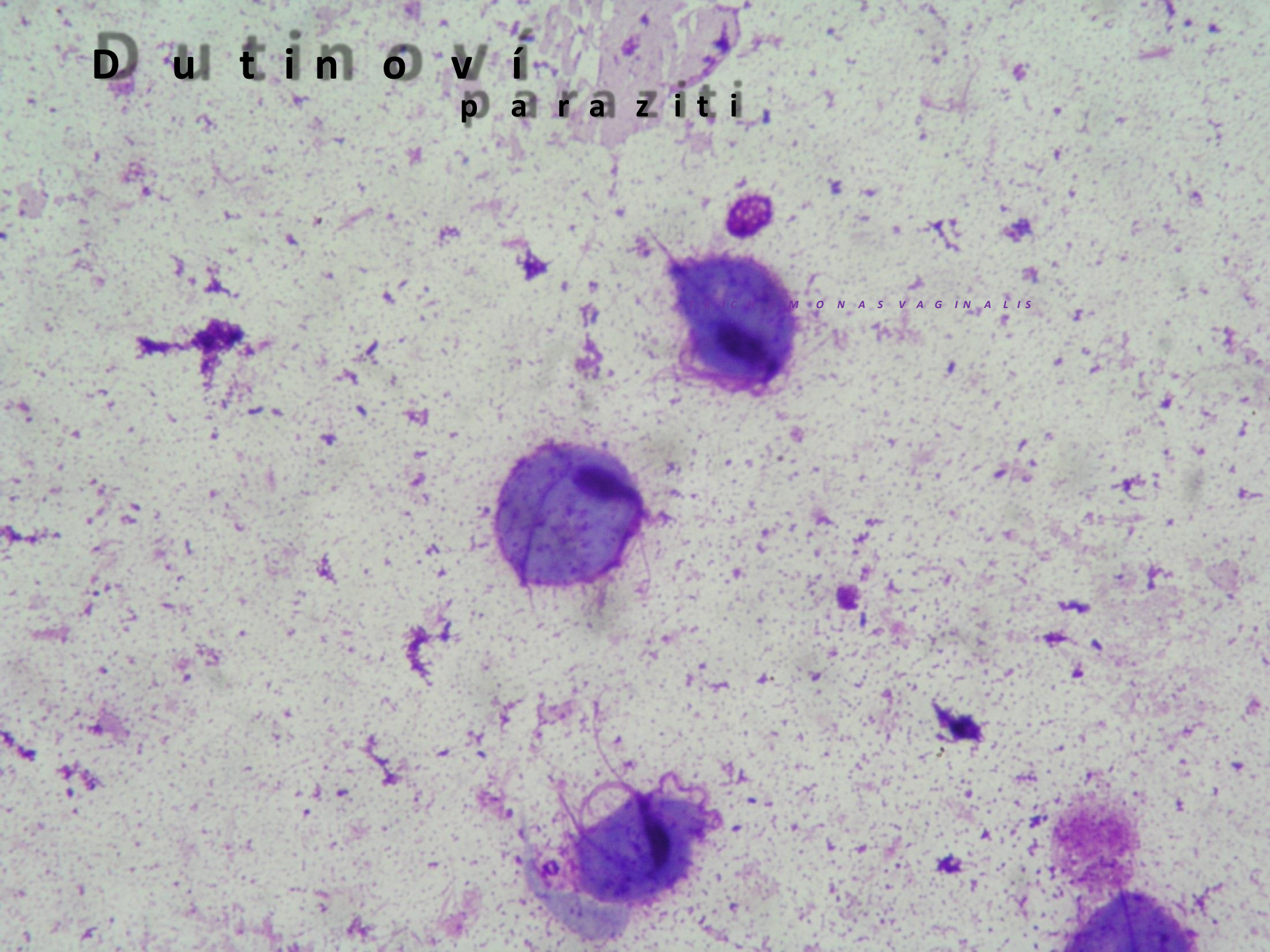
Nepřímý průkaz

K F R , E L I S A (t o x o p l a s m a , t o x o k a r a , t r i c h i n e l a)

Z O B R A Z O V A C Í M E T O D Y

D u t i n o v í p a r a z i t i

TRICHOMONAS VAGINALIS



D i a g n o s t i k a

d u t i n o v ý c h p a r a z i t ů

P ř í m ý p r ů k a z

M I K R O S K O P I E

K U L T I V A C E

m a t e r i á l :

m u ž i - v ý t ě r z u r e t r y , m o č

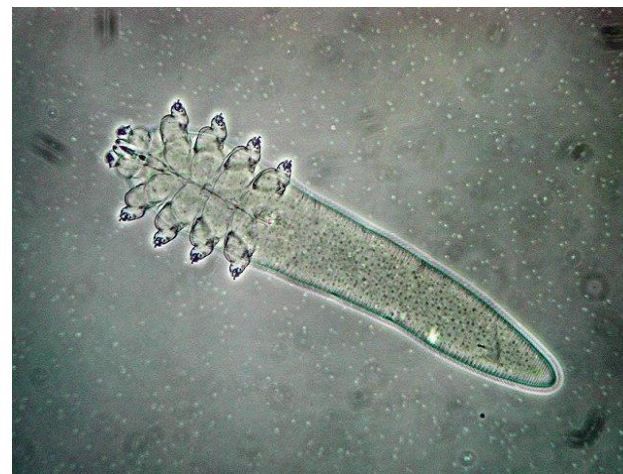
ž e n y - v ý t ě r z u r e t r y , p o c h v y , c e r v i x u

E k t o p a r a z i t i - r o z t o č i

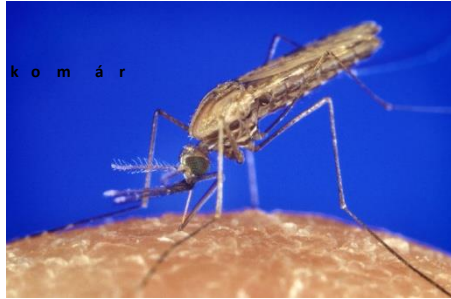
k l i š t ě



s a m e t k a



E k t o p a r a z i t i - h m y z



k o m á r



v e š

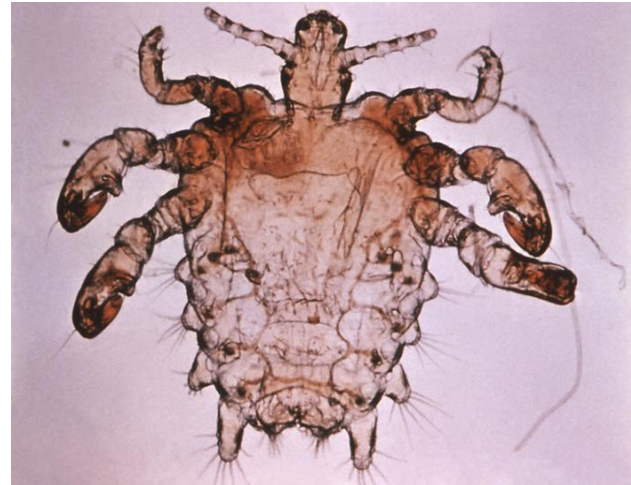


b l e c h a

š t ě n i c e



m u ň k a





D ě k u j i

z a p o z o r n o s t .