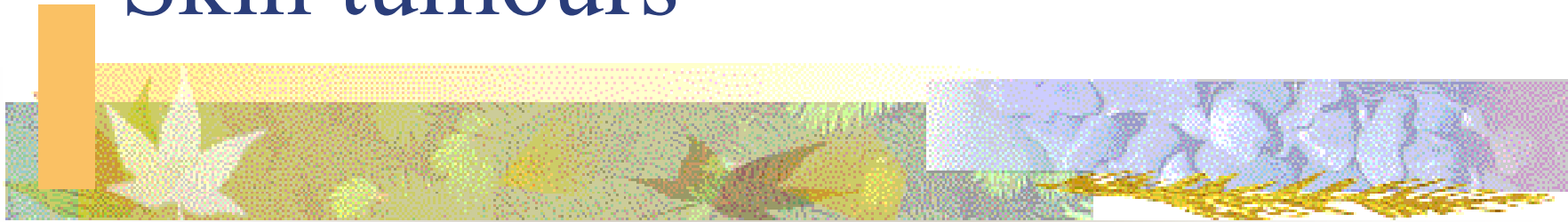


# Skin tumours



Hana Jedličková

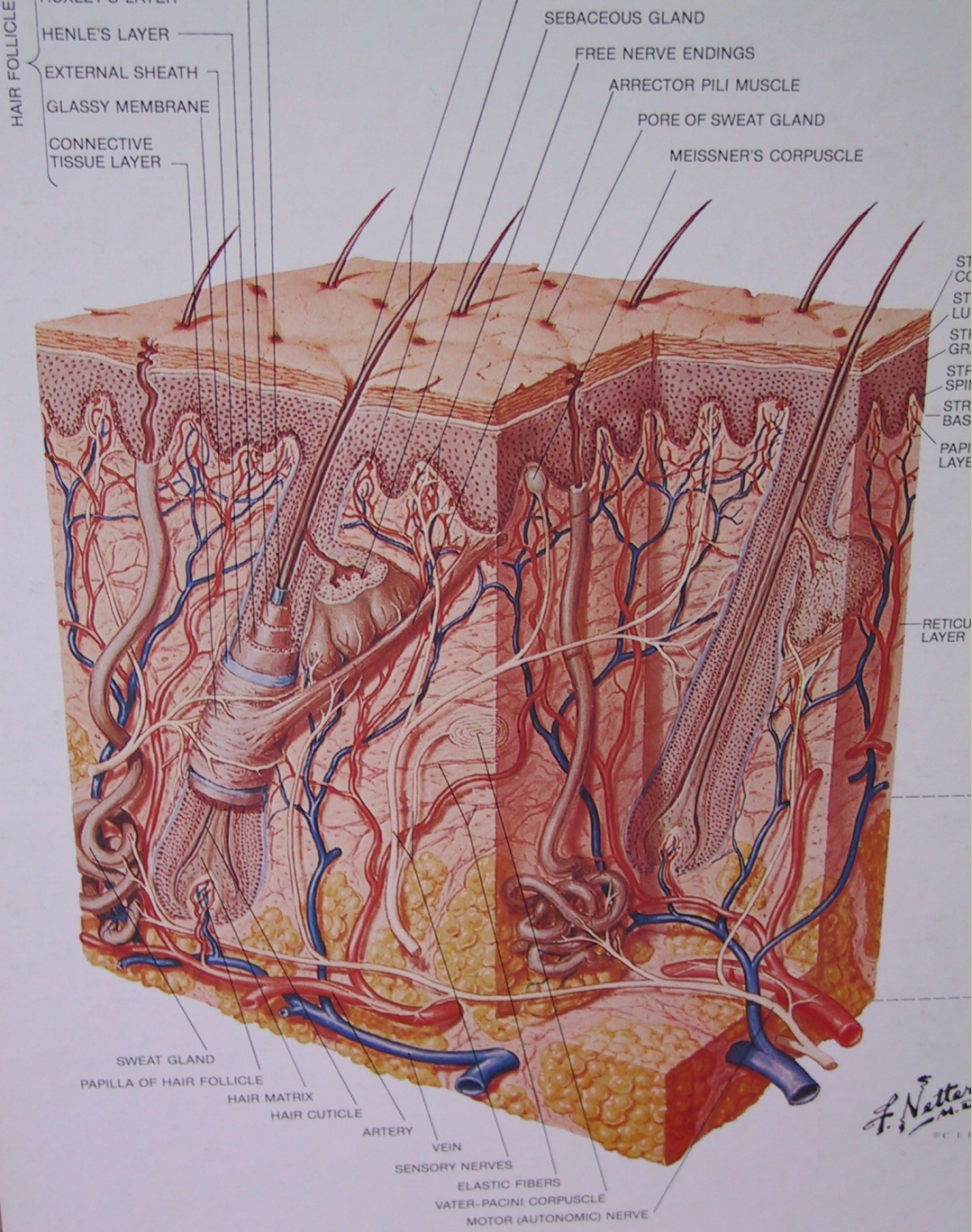
I. Dept. dermatovenereology

St. Anna University Hospital



# Skin tumours

- Malignant
- Benign
- Nevi
- Cysts, warts, scars



HAIR FOLLICLE

HENLE'S LAYER  
EXTERNAL SHEATH  
GLASSY MEMBRANE  
CONNECTIVE TISSUE LAYER

SEBACEOUS GLAND  
FREE NERVE ENDINGS  
ARRECTOR PILI MUSCLE  
PORE OF SWEAT GLAND  
MEISSNER'S CORPUSCLE

ST  
CC  
ST  
LU  
ST  
GR  
STF  
SPII  
STR  
BAS  
PAPI  
LAYE

RETICU  
LAYER

SWEAT GLAND  
PAPILLA OF HAIR FOLLICLE  
HAIR MATRIX  
HAIR CUTICLE  
ARTERY  
VEIN  
SENSORY NERVES  
ELASTIC FIBERS  
VATER-PACINI CORPUSCLE  
MOTOR (AUTONOMIC) NERVE

F. Netter  
M.D.



# Malignant tumours - epithelial

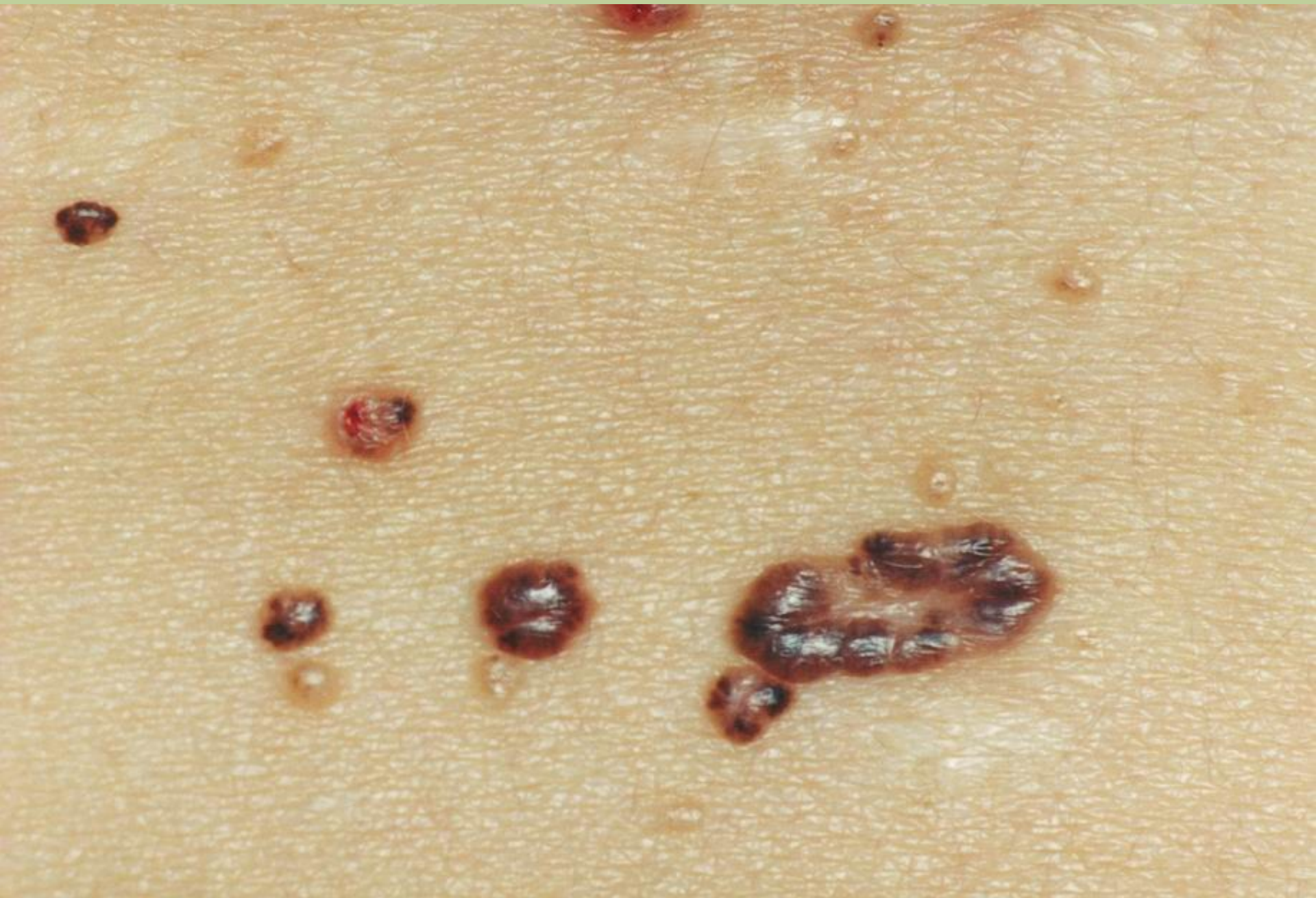
- Basal cell carcinoma
- Squamous cell carcinoma
- Actinic keratoses, cornu cutaneum
- Morbus Bowen
- Keratoacanthoma
- Morbus Paget



# Basal cell carcinoma

- Hereditary - Gorlin syndrome
- Long term UV exposition – actinic damage  
UVB (UVA)
- Sun exposed areas - face













# Squamous cell carcinoma

- Actinic damage – face, scalp, dorsal aspects of the hands
- Chronic wounds – ulcers, ca in lupo
- Chronic dermatoses – lichen verrucosus
- Therapy side-effects – rtg, arsen, UV, cytostatics

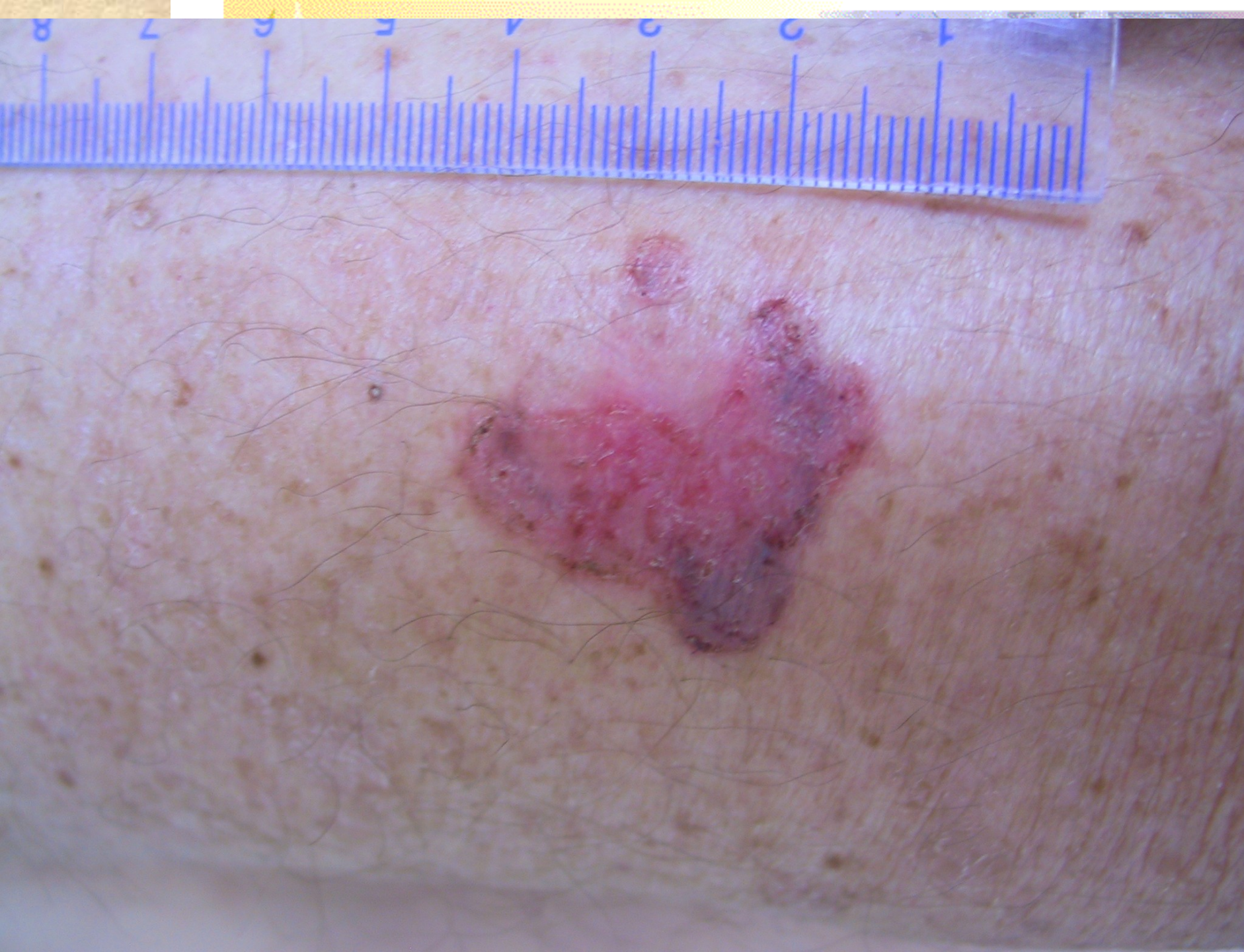
# Actinic keratoses





# Morbus Bowen

















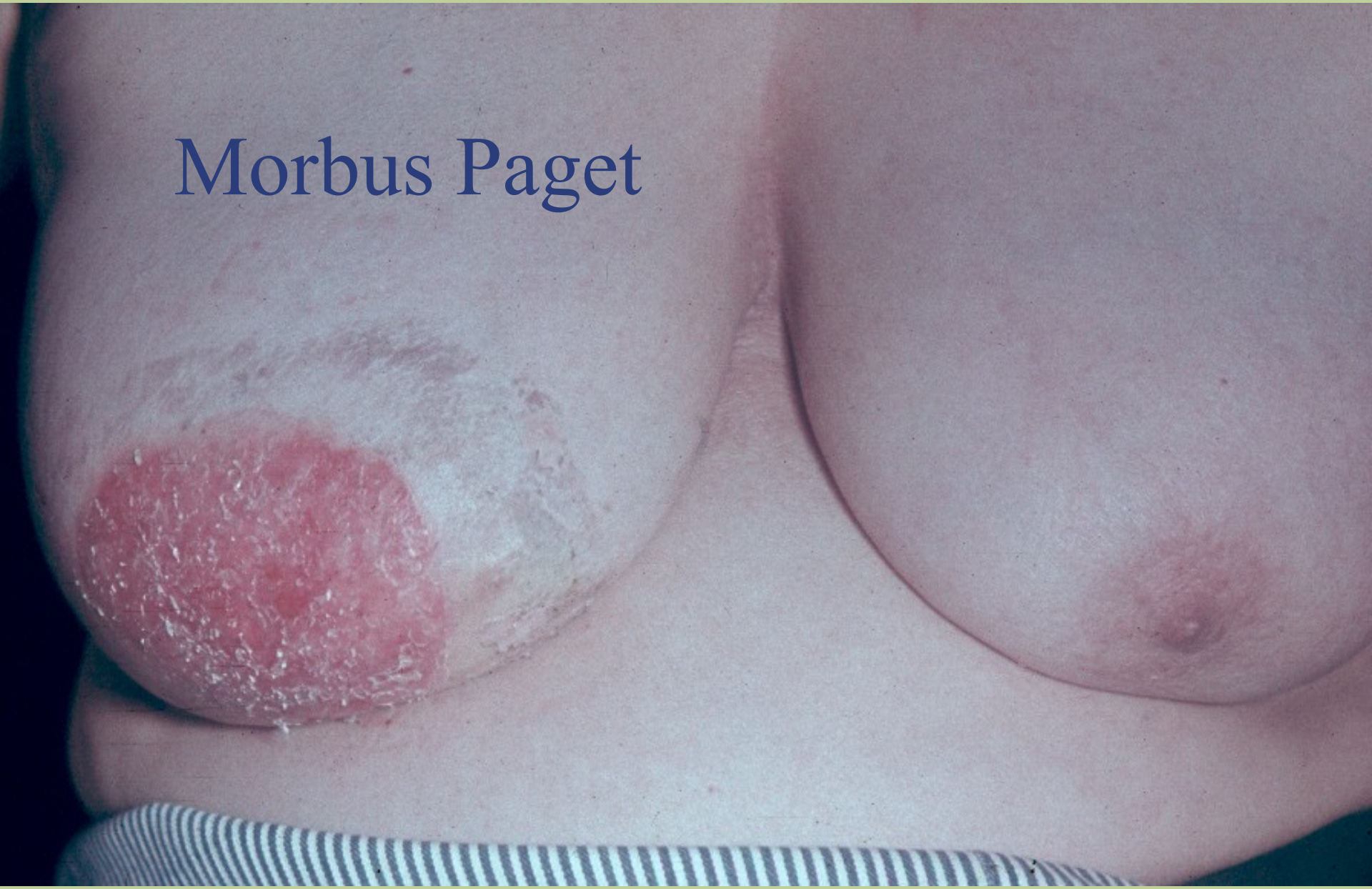




Keratoacanthoma



# Morbus Paget



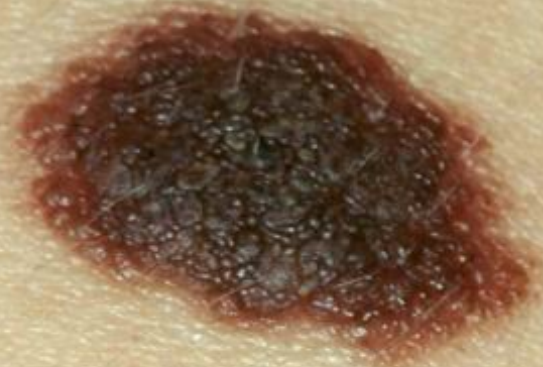


# Malignant tumours non-epithelial

- Melanoma
- Sarkomas  
Kaposi sarkoma
- Lymphomas
- Histiocytoses



Pigment cell nevus



Dysplastic nevi



# Halo nevus





# Malignant melanoma

- Phototype I, II
- Familiar dysplastic nevi – mutations 9p21
- Actinic damage - sunburn



# Malignant melanoma

- ABCD rule
- Asymmetry
- Border
- Colour
- Diameter  $>5\text{mm}$
- Evolution



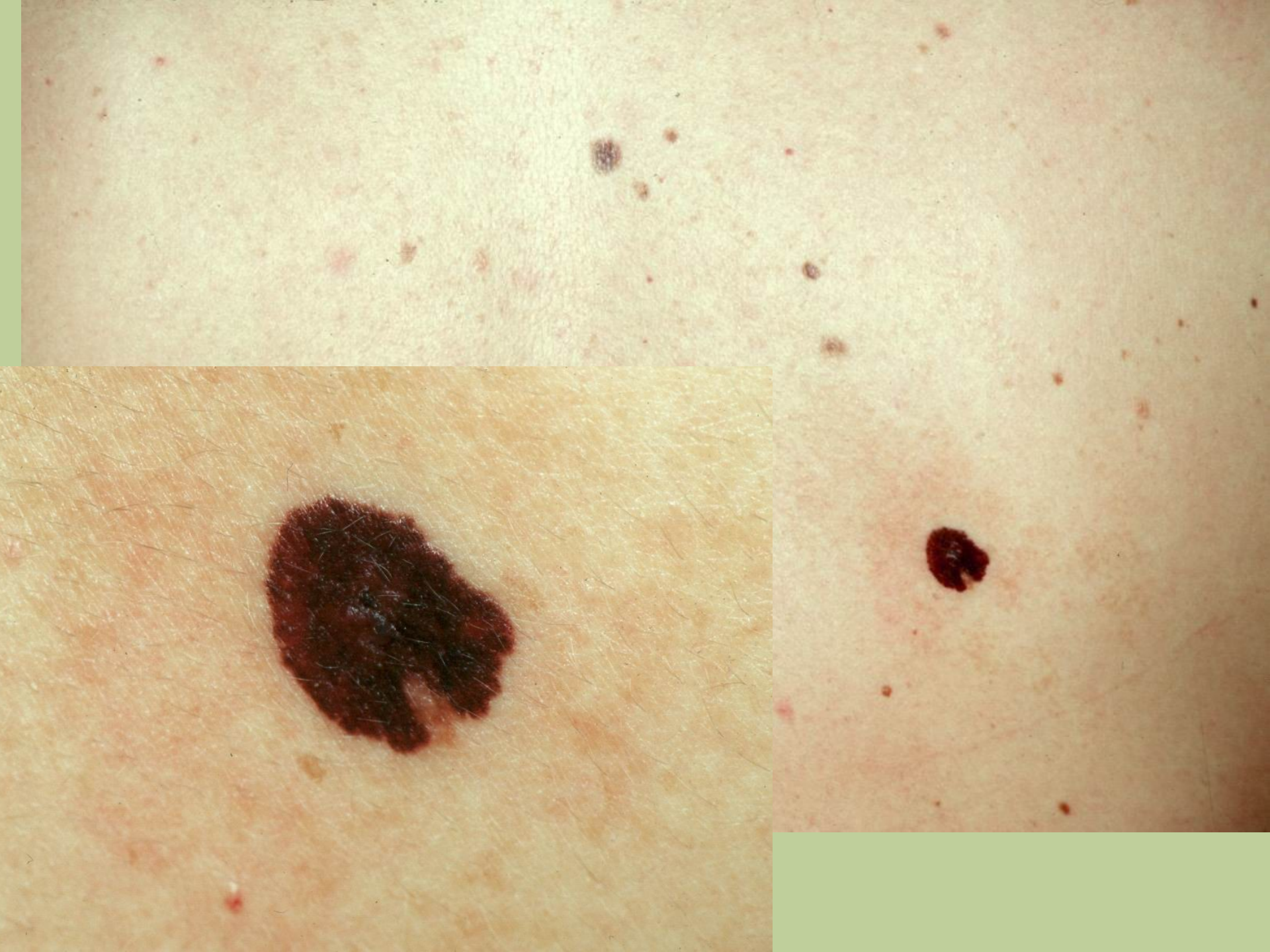
# Malignant melanoma

- Superficially spreading
- Nodular
- Acrolentiginous
- Lentigo maligna melanoma



# Malignant melanoma

- Histologic criteria
- Breslow < 1mm, < 2mm, more
- Clark I-V































# Lymphomas

- Nodal – pruritus, infiltration, ichthyosis, immunosupresion (scabies)
- Primary skin epidermotropic T cell
  - I.stage – chronic dermatitis
  - II. stage – skin infiltration
  - III. stage – tumours







# B cell lymphoma

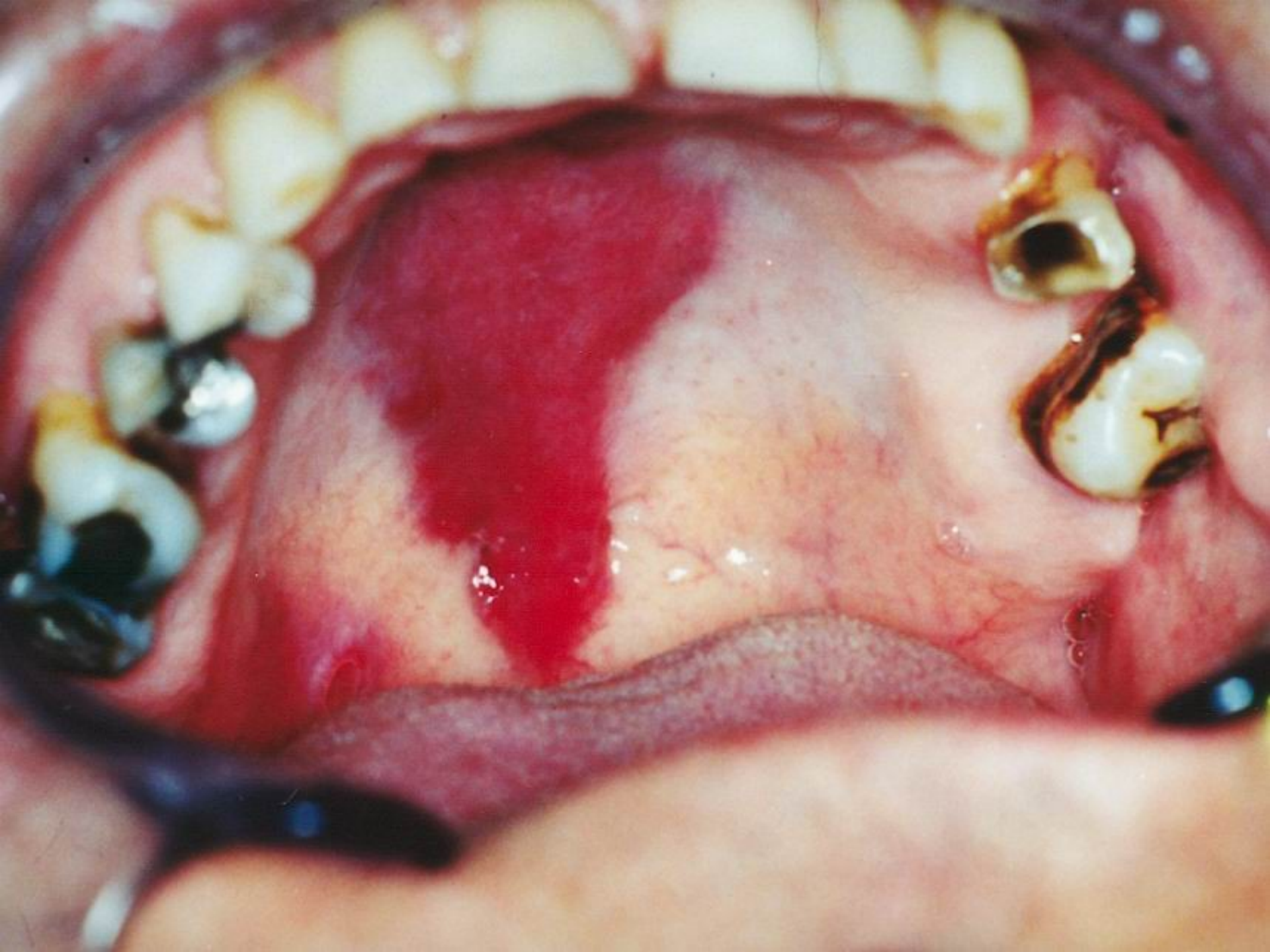




Kaposi sarkoma – old men

- HIV positivity









# Metastatic disease

- Melanoma
- Squamous cell carcinoma
- Lung cancer - chest
- Breast cancer – chest, arms
- Renal tumours - scalp
- GIT tumours – navel (sister Mary Joseph nodule)













# Paraneoplastic signs

- Ichthyosis
- Pruritus
- Keratoderma palmoplantar
- Dermatomyositis
- Bullous pemphigoid
- Acanthosis nigricans



