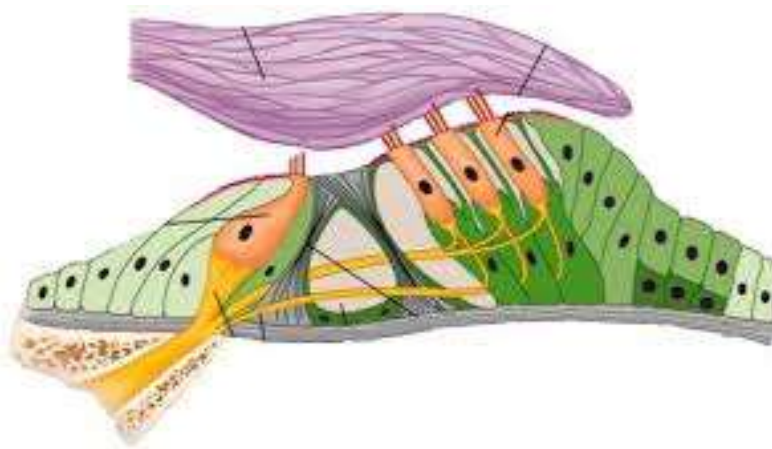


Sensory organs

- 1) Draw a diagram of the individual layers of the eyeball and name the layers and their specific parts.
- 2) How does the *cornea* differ from the *sclera*? List at least 3 different characteristics.
- 3) Define the refractive power of the eye in dioptres? What percentage of this number belongs to the eye lens? Name the remaining refractive structures of the eye.
- 4) Describe what does *pars caeca retinae* look like on the iris and ciliary body. What embryonic structure does this part develop from?
- 5) Schematically draw *pars optica retinae* (with 10 layers).
- 6) What is *macula lutea*? Why is there a pit in this region - *fovea centralis*?
- 7) How does an eye cup develop? What are the further steps of development? How does the lens develop?
- 8) Which embryonic structure do the sensory cells of the inner ear develop from? Briefly describe how.
- 9) Describe the structures that delimit the *ductus cochlearis* of the inner ear.
- 10) What is the function of the hair of hair cells of the inner ear?
- 11) Label as many structures in the image as possible:



Slides:

88. Anterior segment of the eye
89. Posterior segment of the eye
90. Fasciculus opticus
91. Palpebra
92. Gl. lacrimalis
93. Ductus cochlearis
94. Auricula

Atlas EM:

- Development of the eye (97)
- Development of the ear (98)