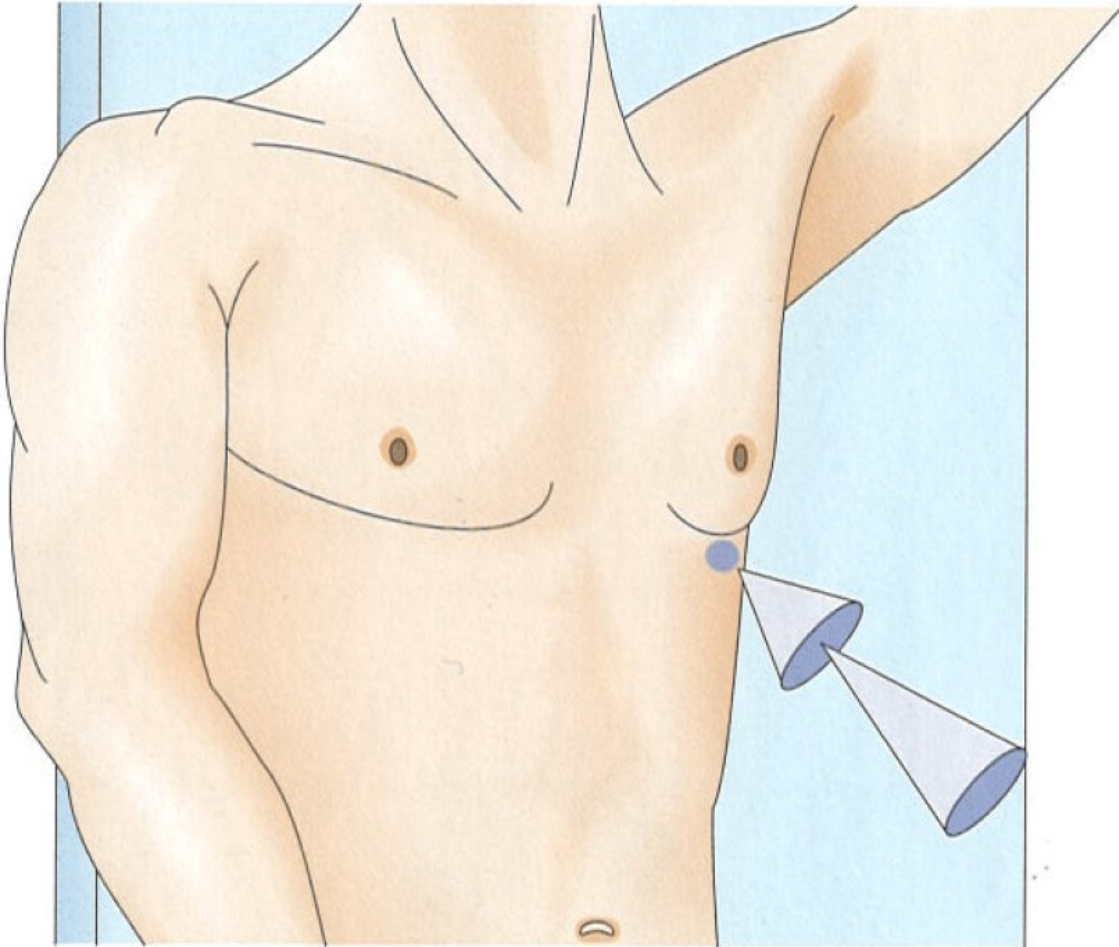


M U N I
M E D

ECHOcardiography

ECHO „windows“ and views. Apical window.

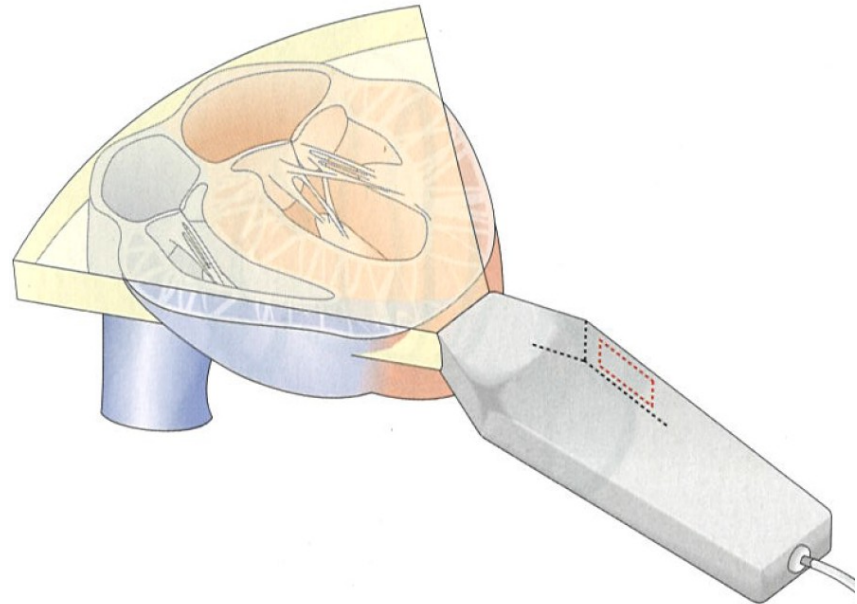


- Short – axis view
 - 2 – chambre view
 - 3 – chambre view
- Long – axis view
 - 4 – chamber view
 - 5 – chambre view

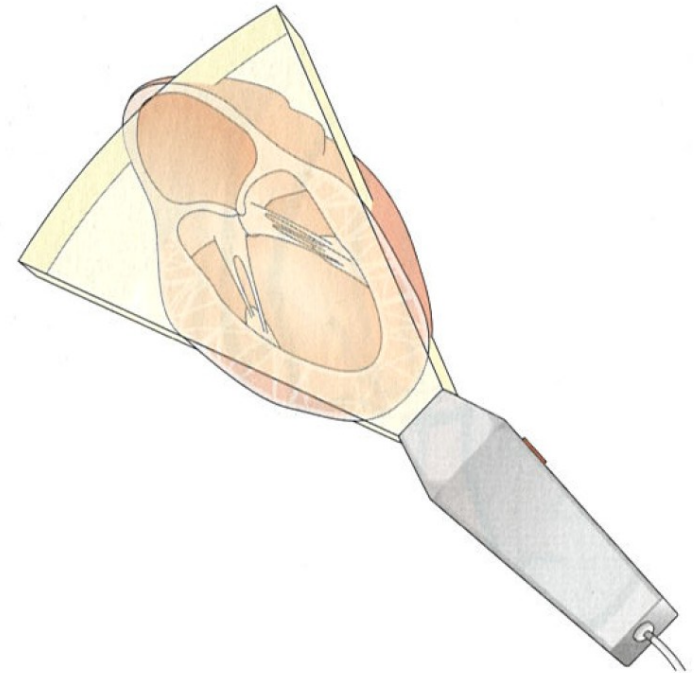
ECHO „windows“ and views. Apical window.

□ Long – axis

view

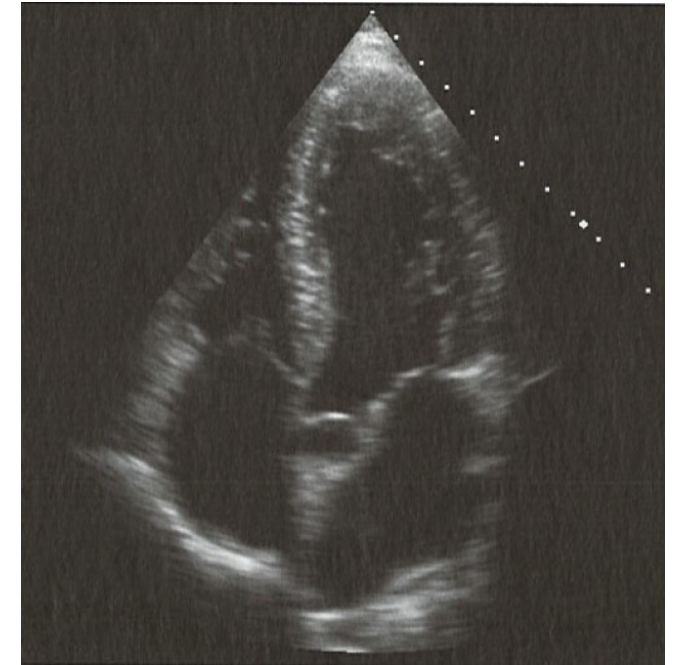
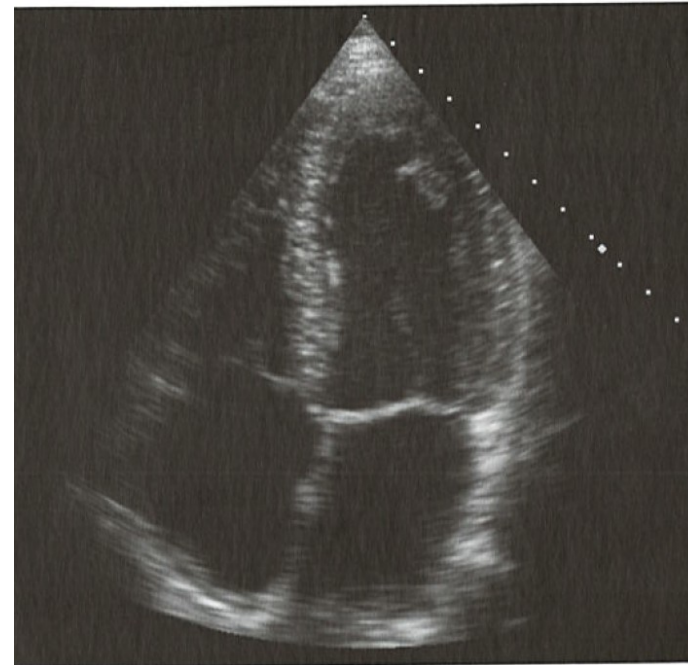
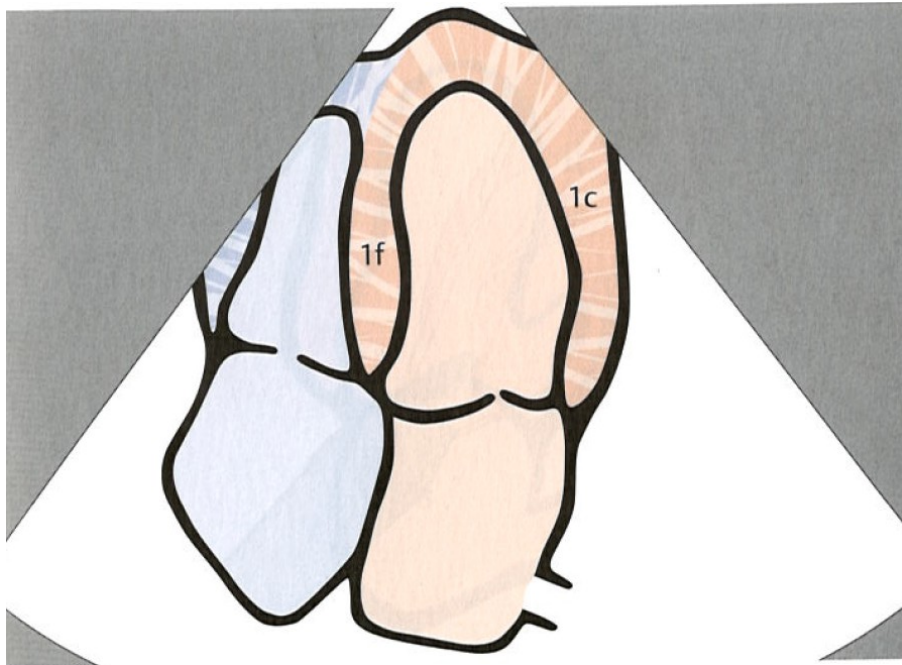
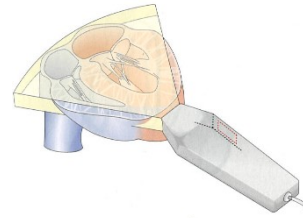


□ Short – axis



ECHO „windows“ and views. Apical window.

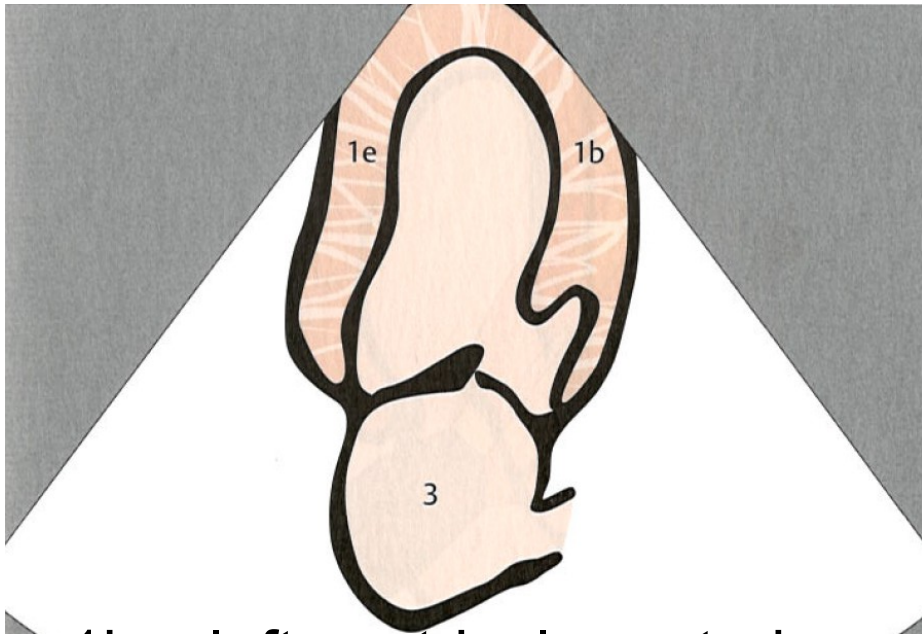
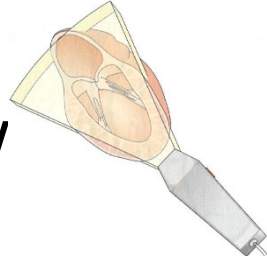
□ Long – axis
view



Evaluation of the systolic and diastolic function of the heart

ECHO „windows“ and views. Apical window.

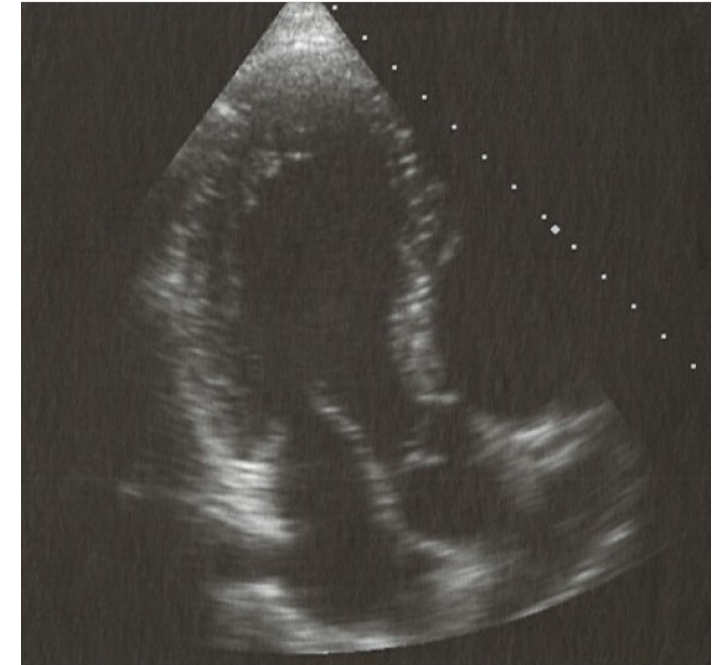
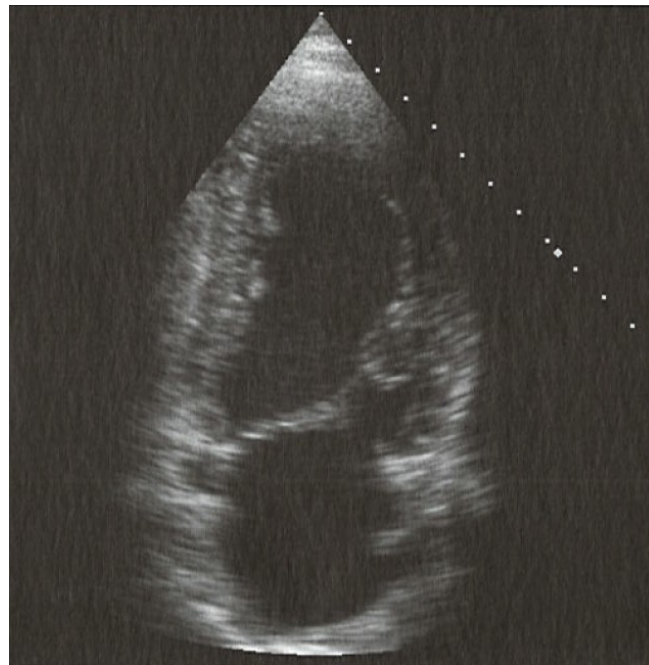
□ Short – axis view



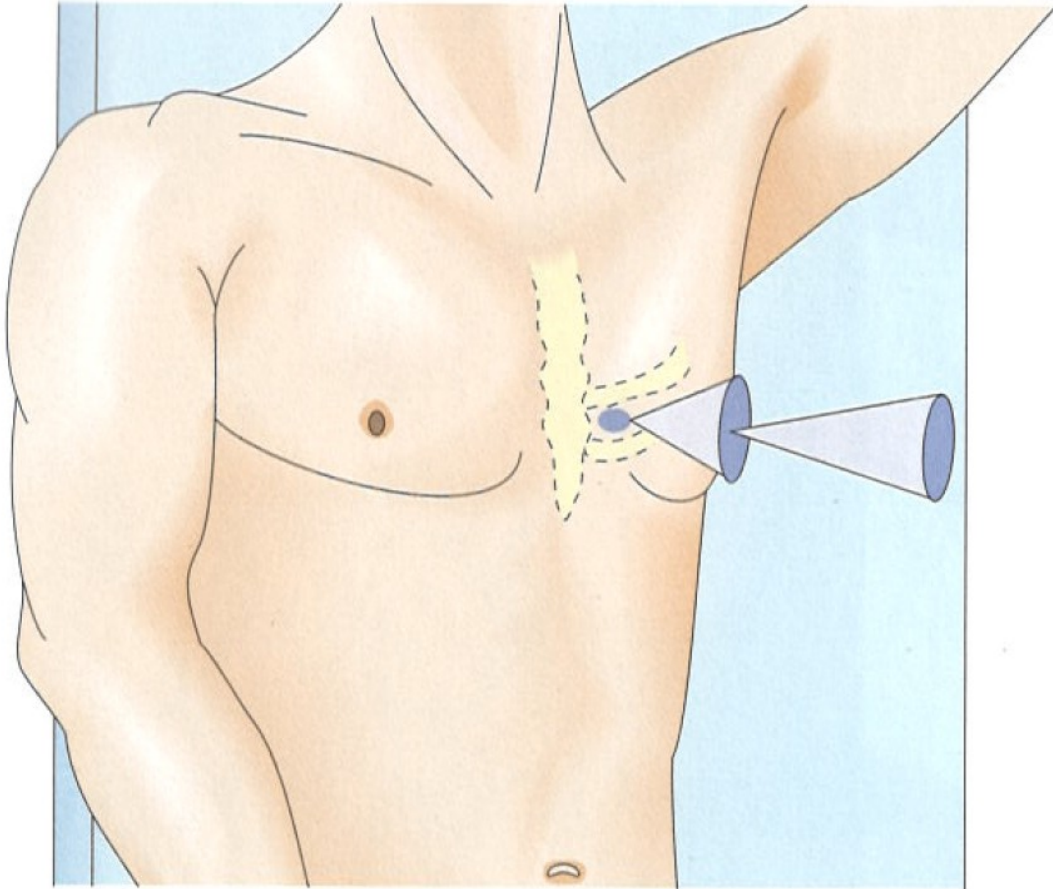
□ 1b – left ventricular anterior wall

□ 1e – left ventricular posterior wall

□ 3 – left atrium



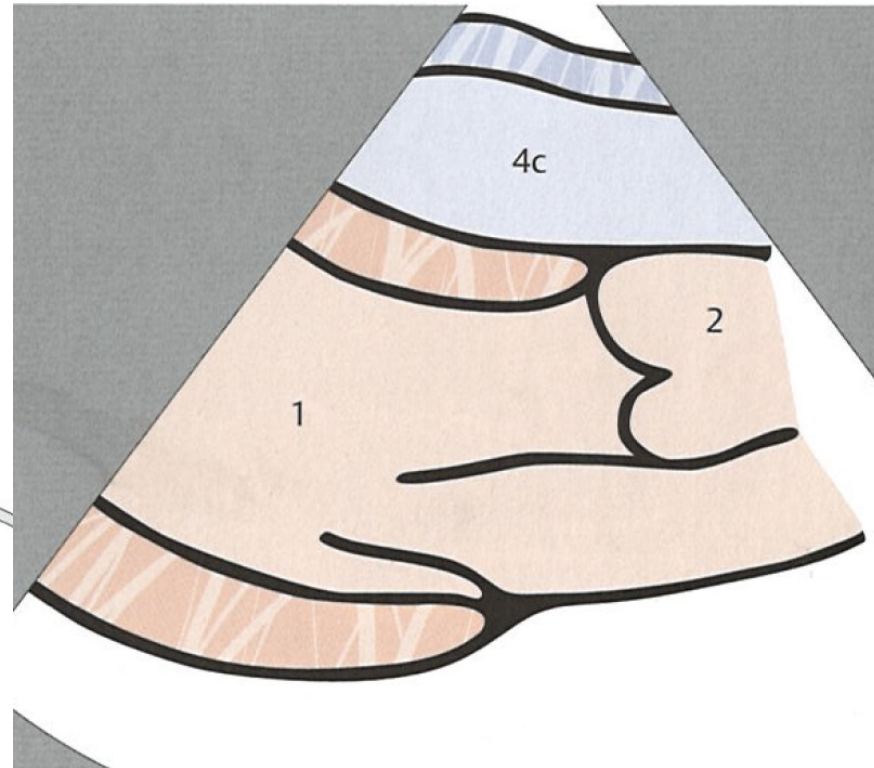
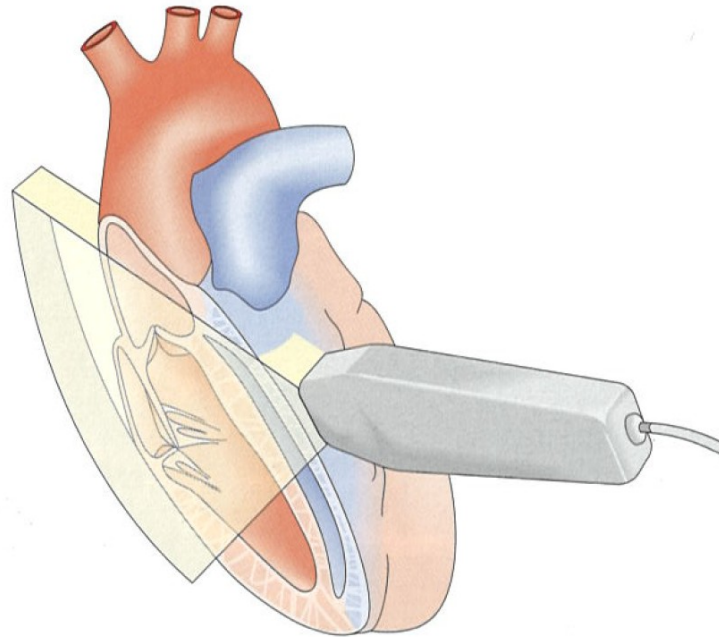
ECHO „windows“ and views. Parasternal window.



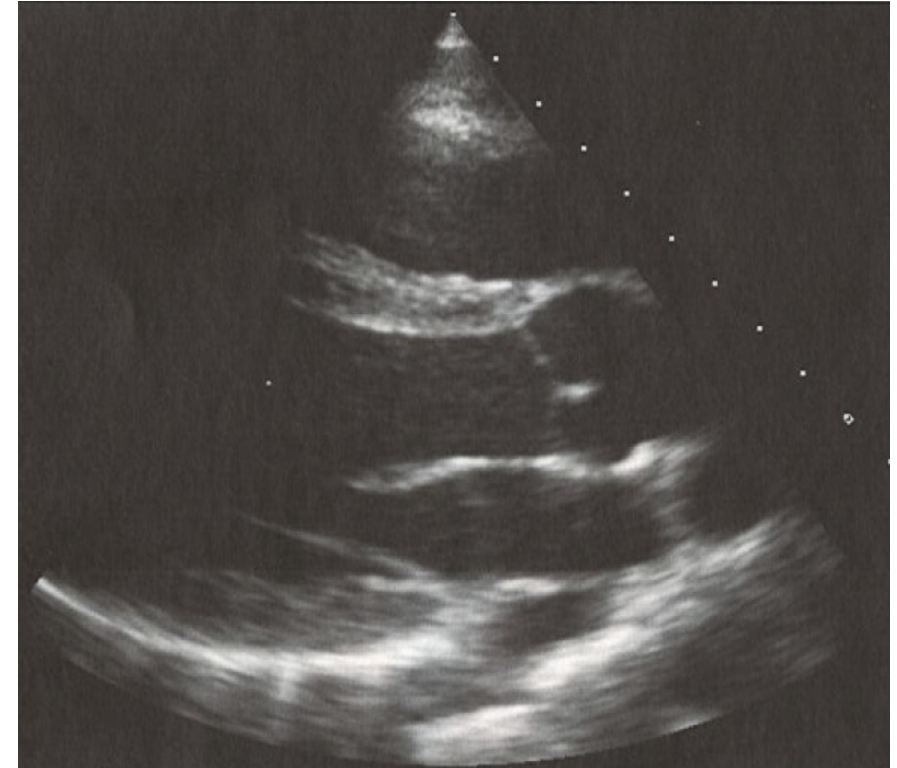
- Short – axis view
- Long – axis view

ECHO „windows“ and views. Parasternal window.

□ Long – axis



Estimation of the size of the heart



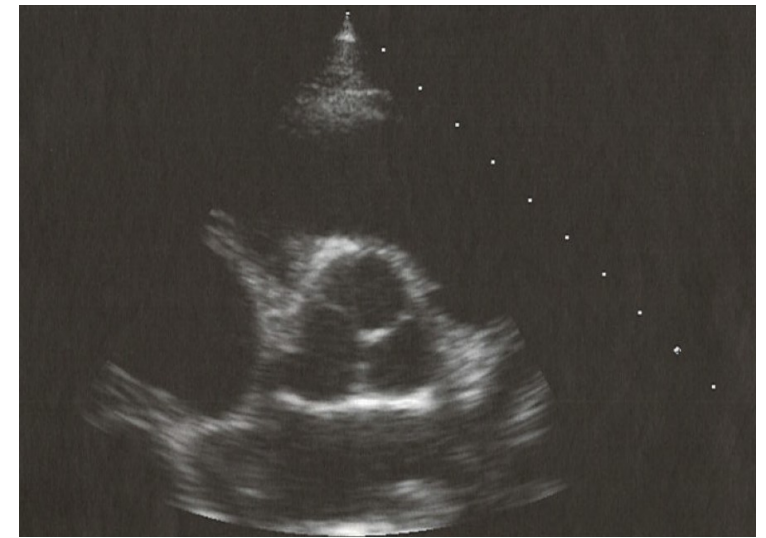
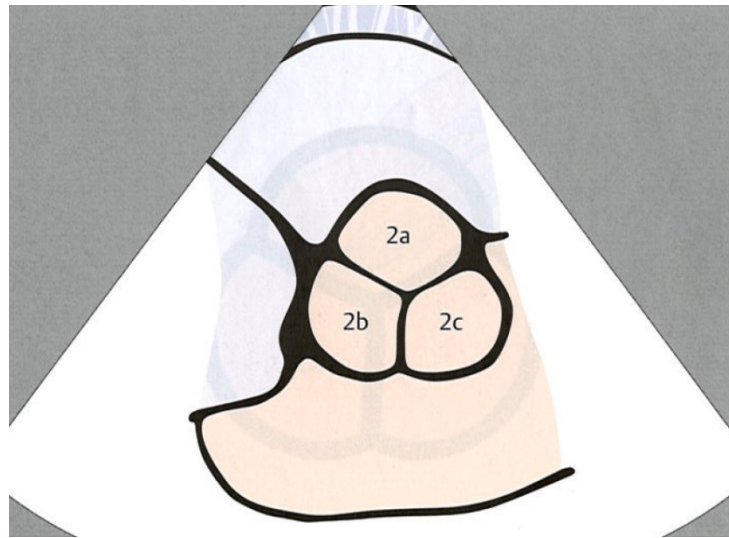
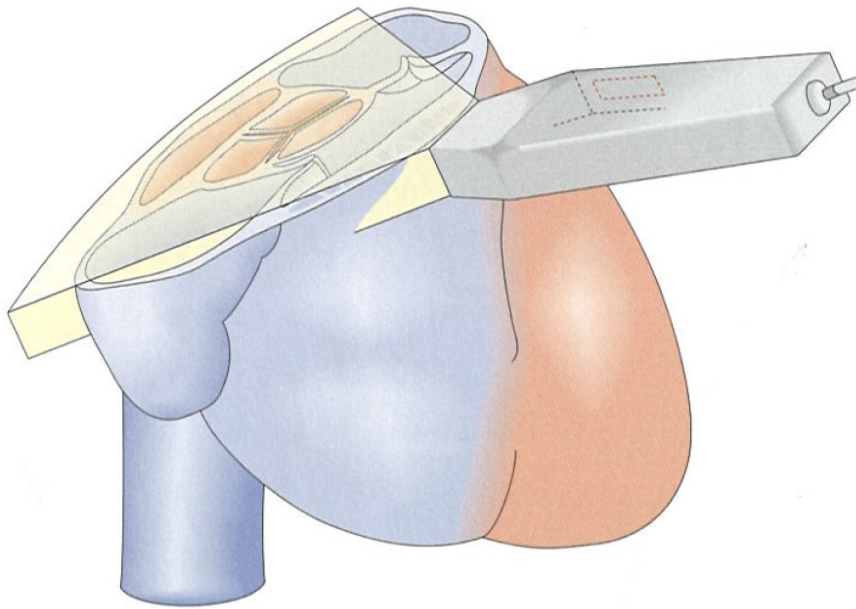
□ 1 – left ventricle

□ 2 – aorta

□ 4c – right ventricle

ECHO „windows“ and views. Parasternal window.

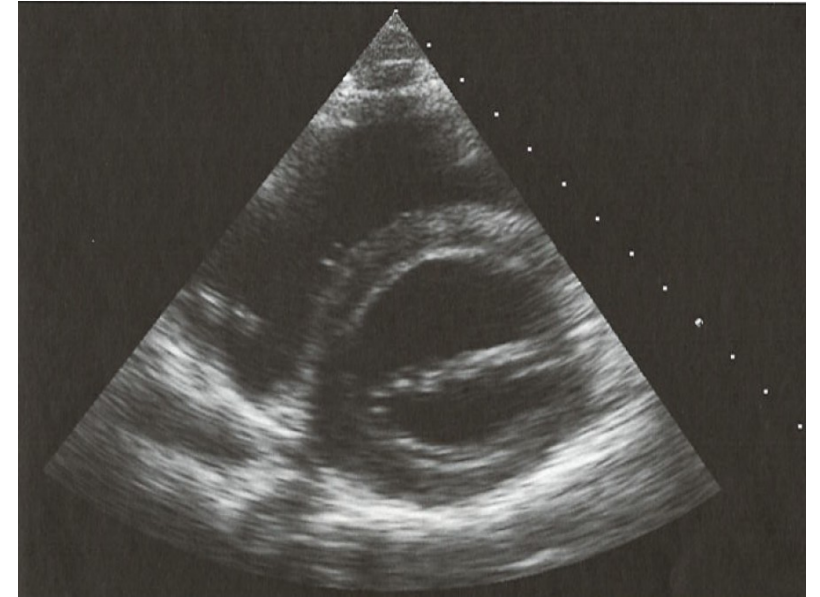
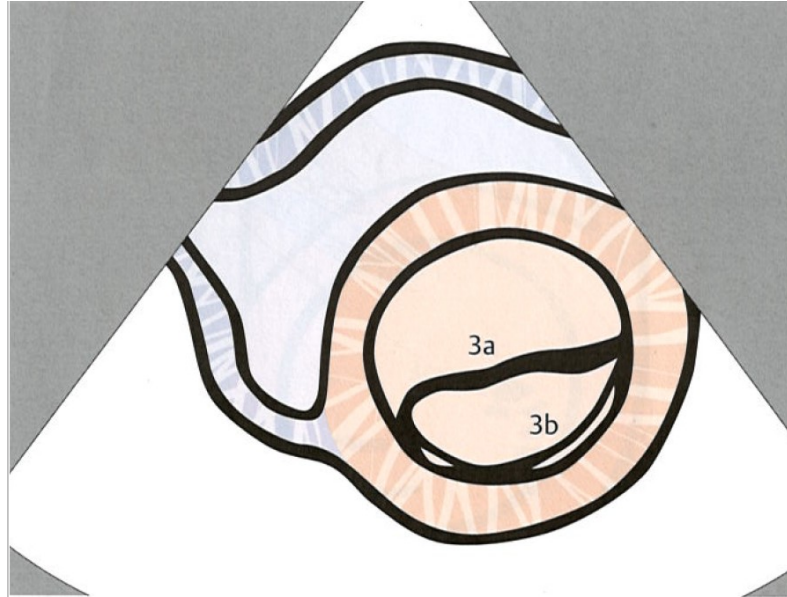
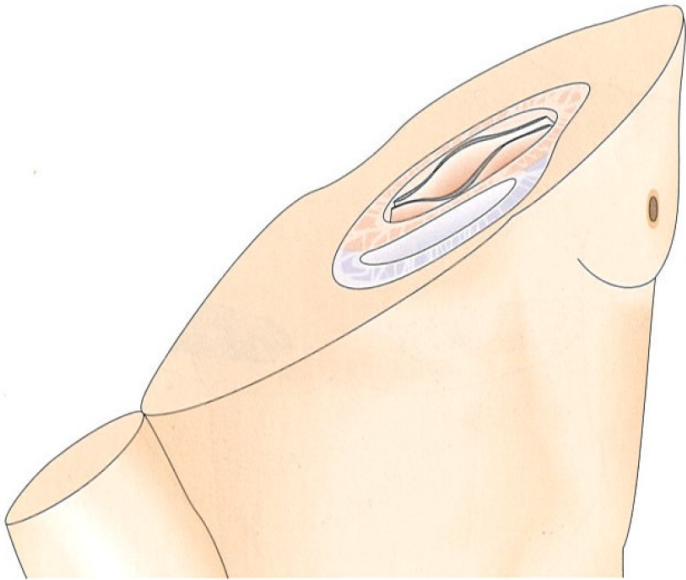
- Short – axis view (Aortic valve)



- 2c - left posterior (origin of left coronary)
- 2b - anterior (origin of the right coronary)
- 2a - right posterior

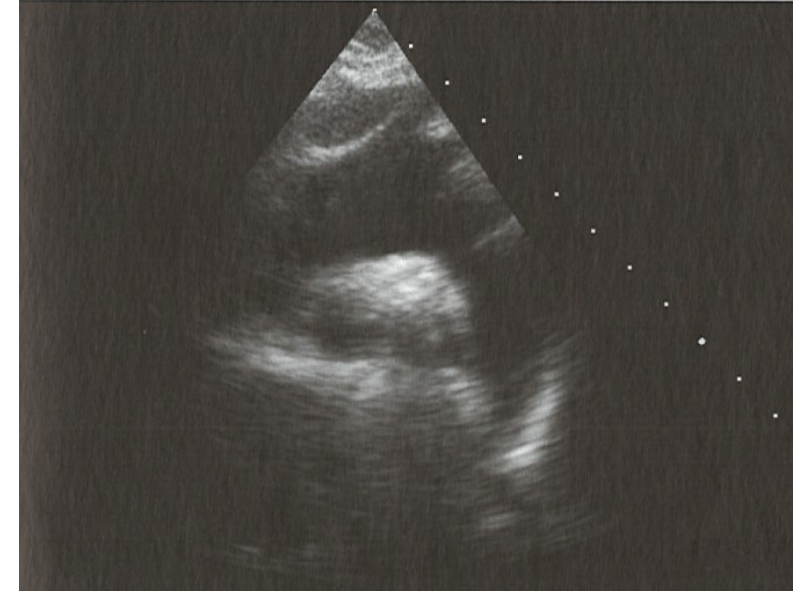
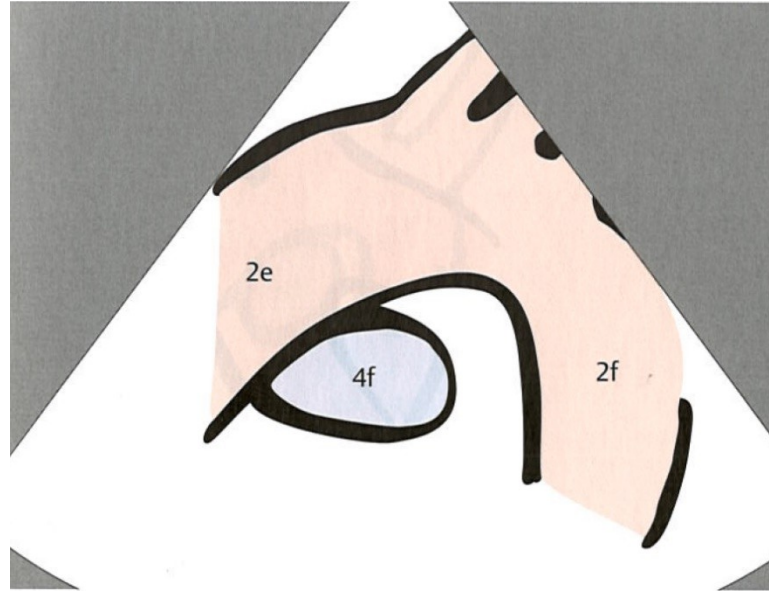
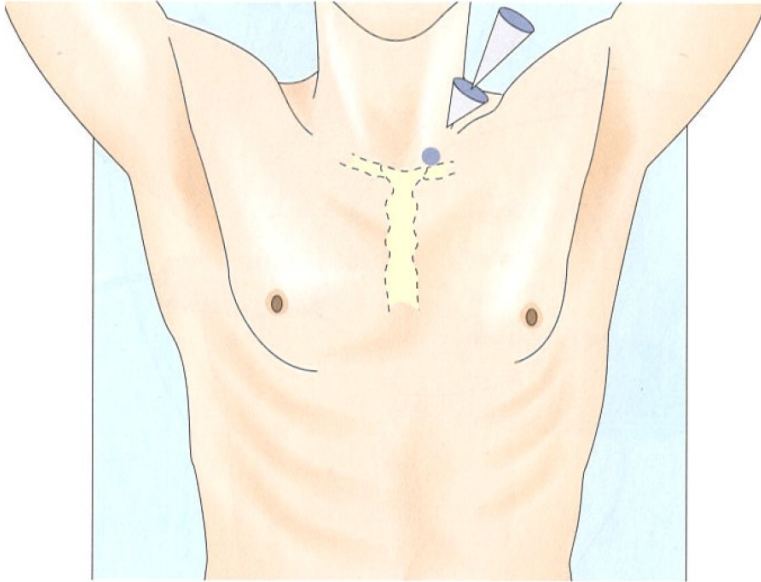
ECHO „windows“ and views. Parasternal window.

- Short – axis view (Mitral valve)



- anteromedial leaflet
- posterolateral leaflet

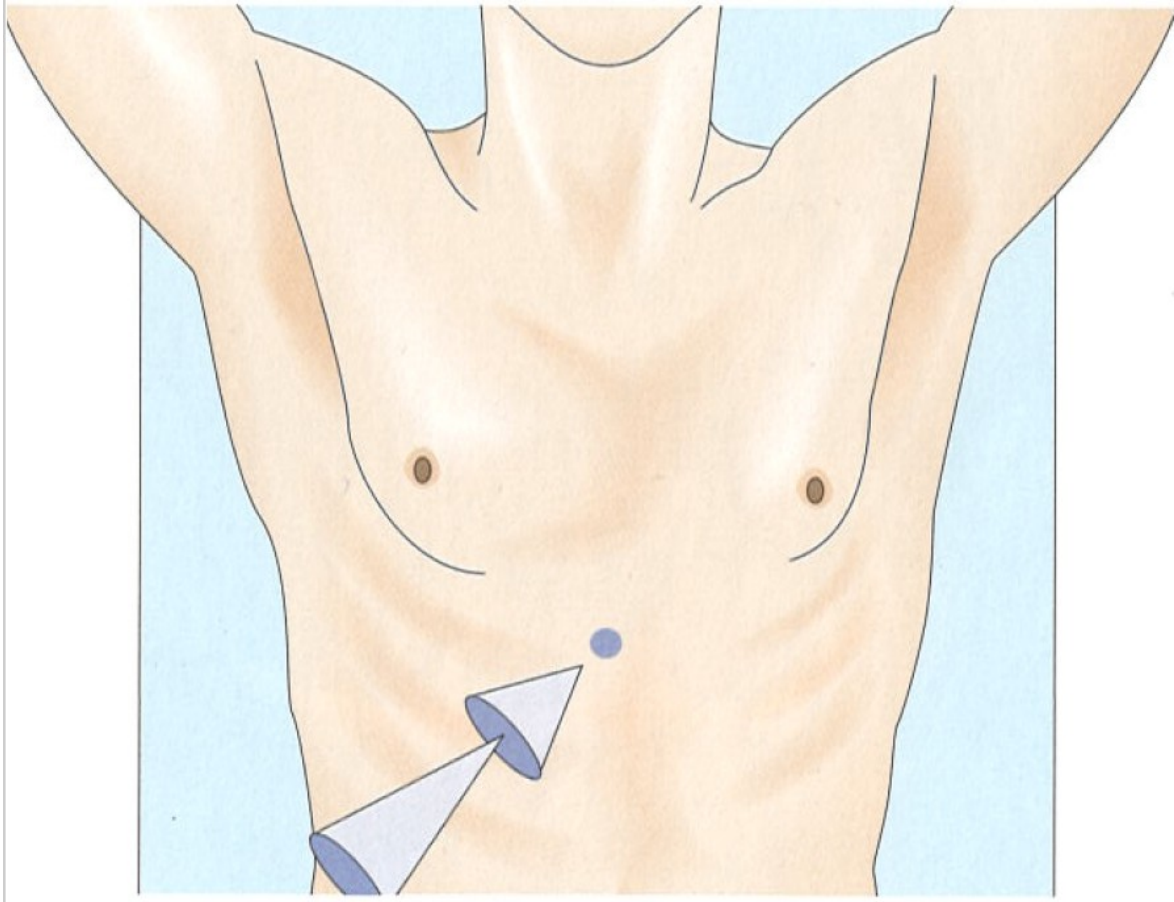
ECHO „windows“ and views. Suprasternal window.



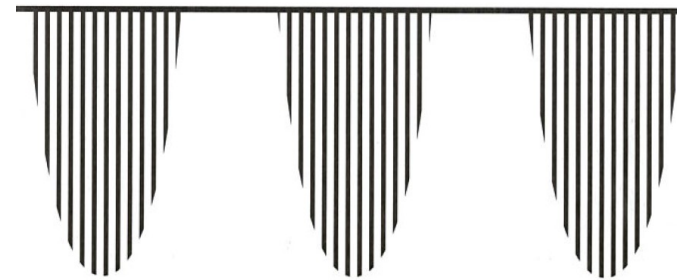
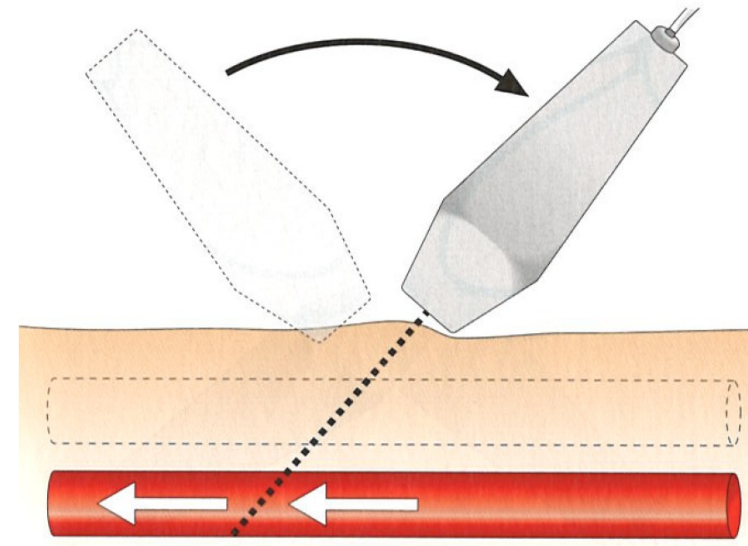
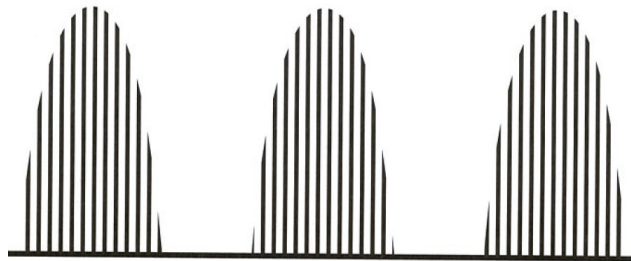
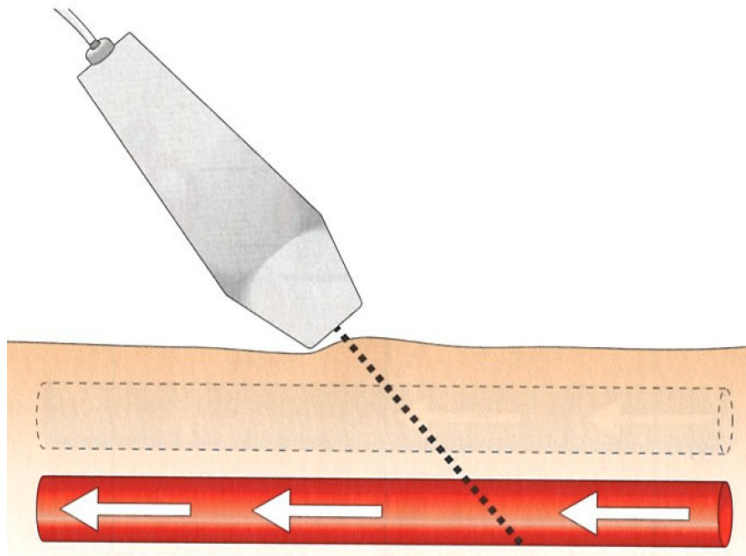
□ 2e – ascending aorta

□ 2f descending aorta

ECHO „windows“ and views. Subcostal window.



Probe position and slope



ECHO. Record.

