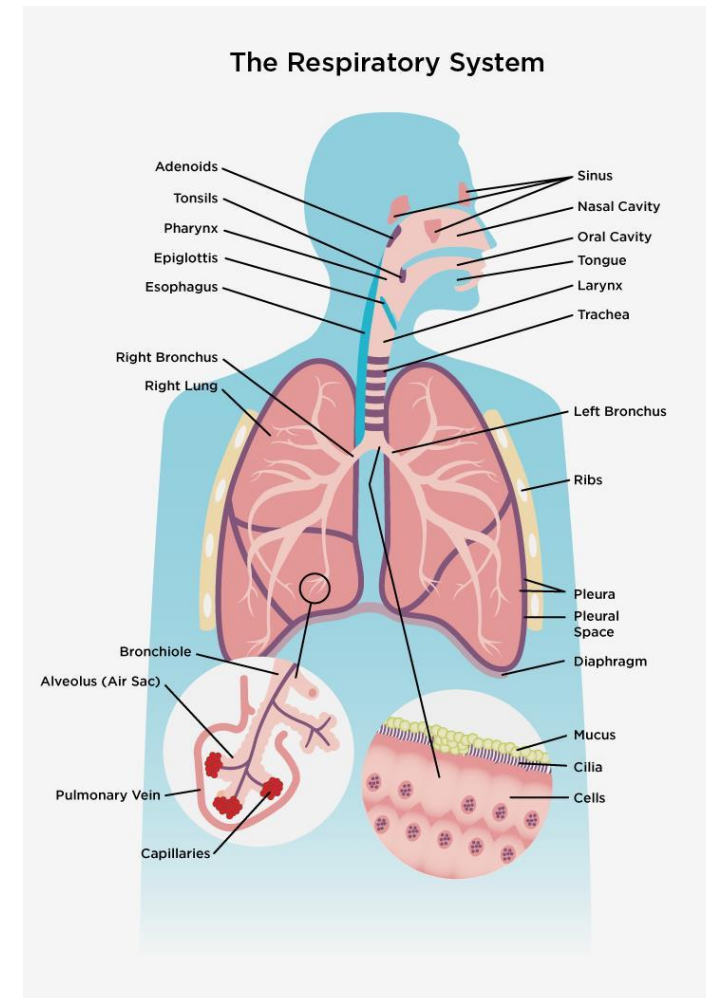




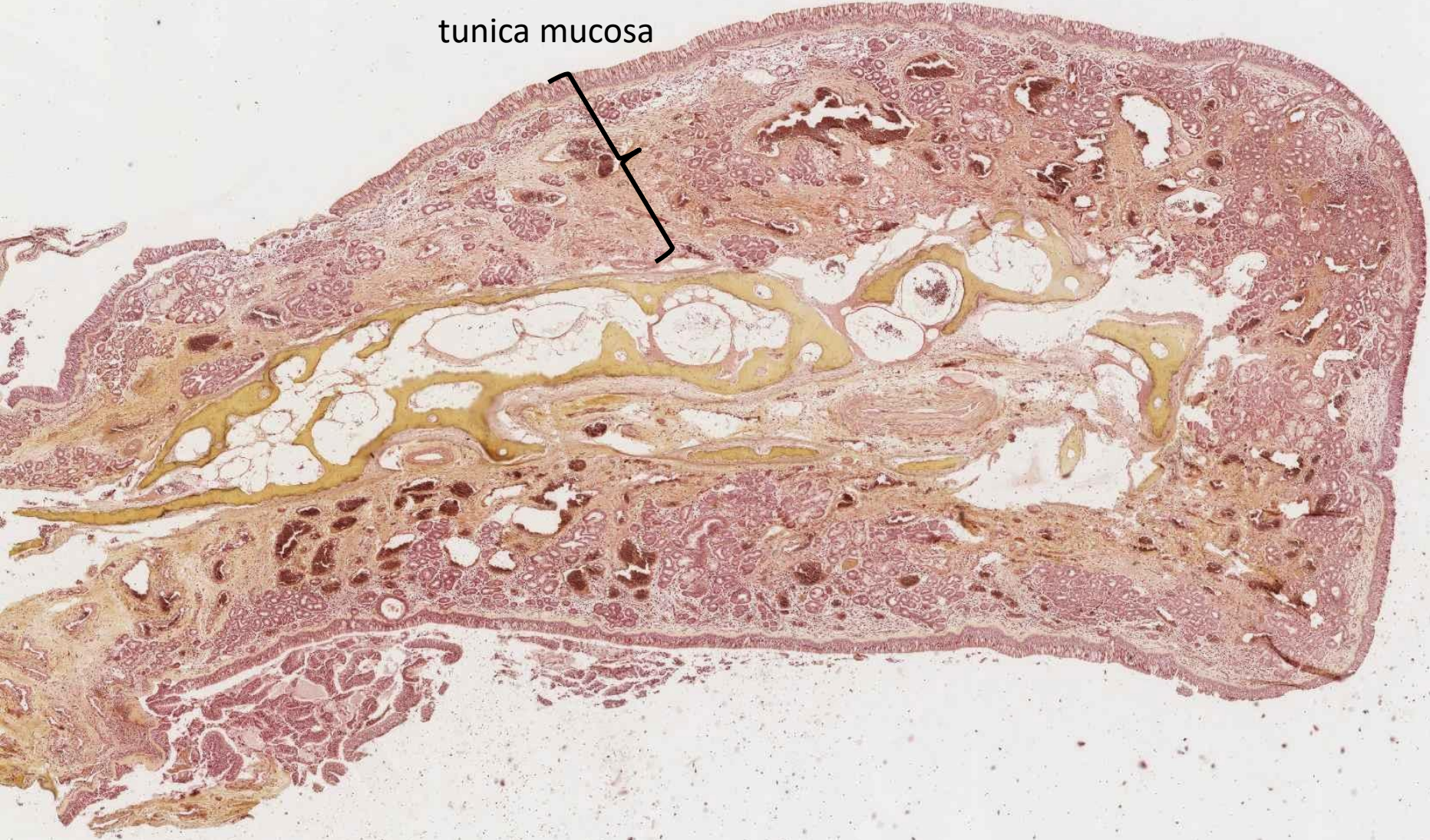
RESPIRATORY SYSTEM

- Respiratory passages
 - Nasal cavity (concha nasi)
 - Pharynx
 - Larynx
 - Trachea
 - Bronchi
- Lung (pulmo)

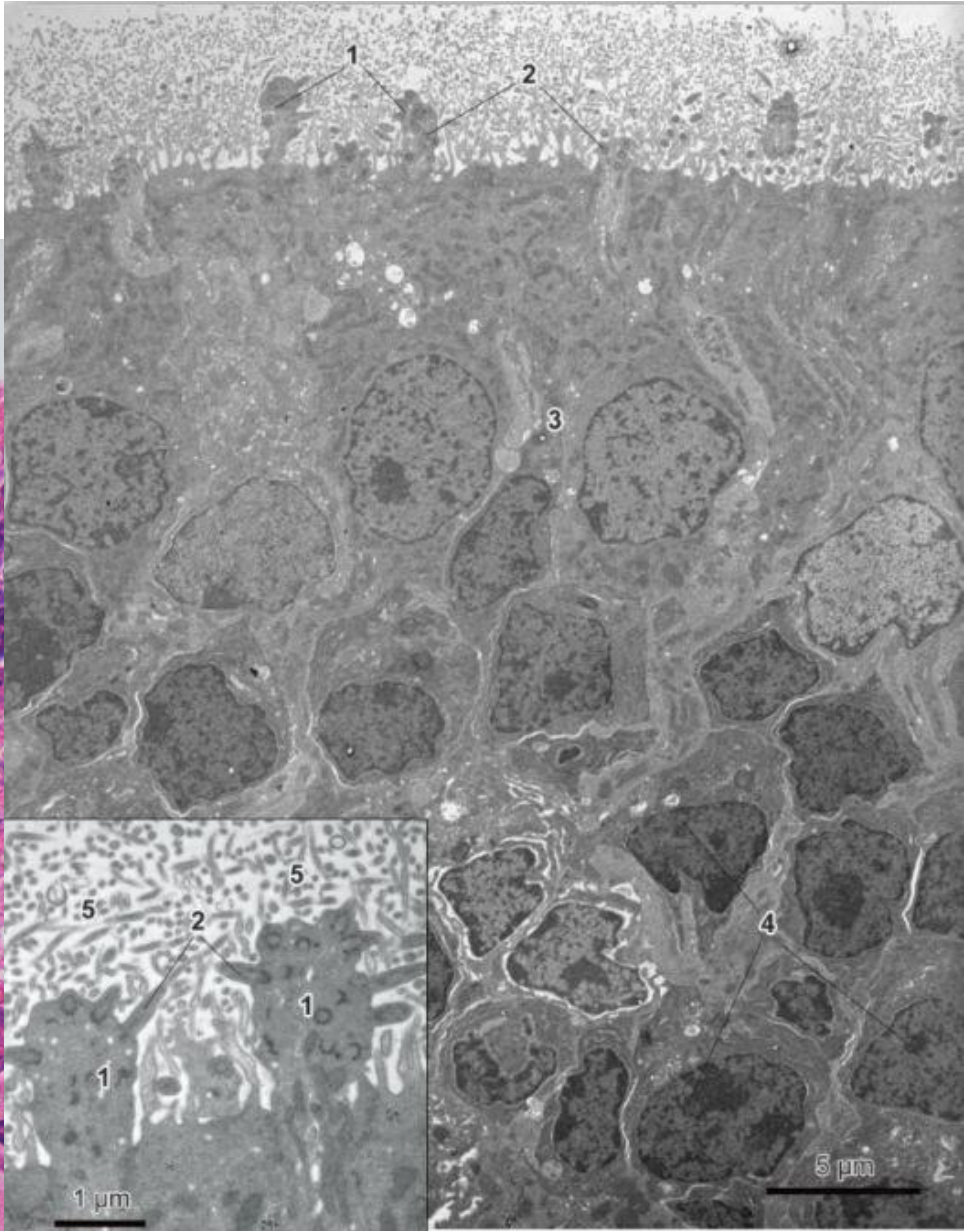
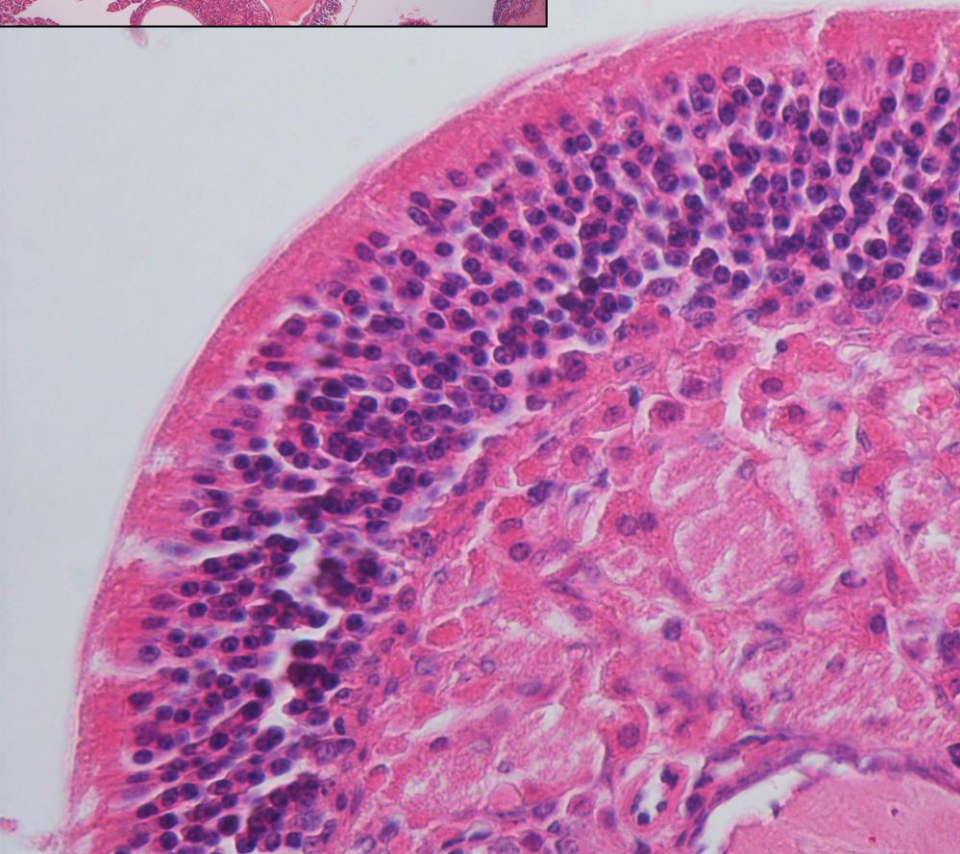


Concha nasi

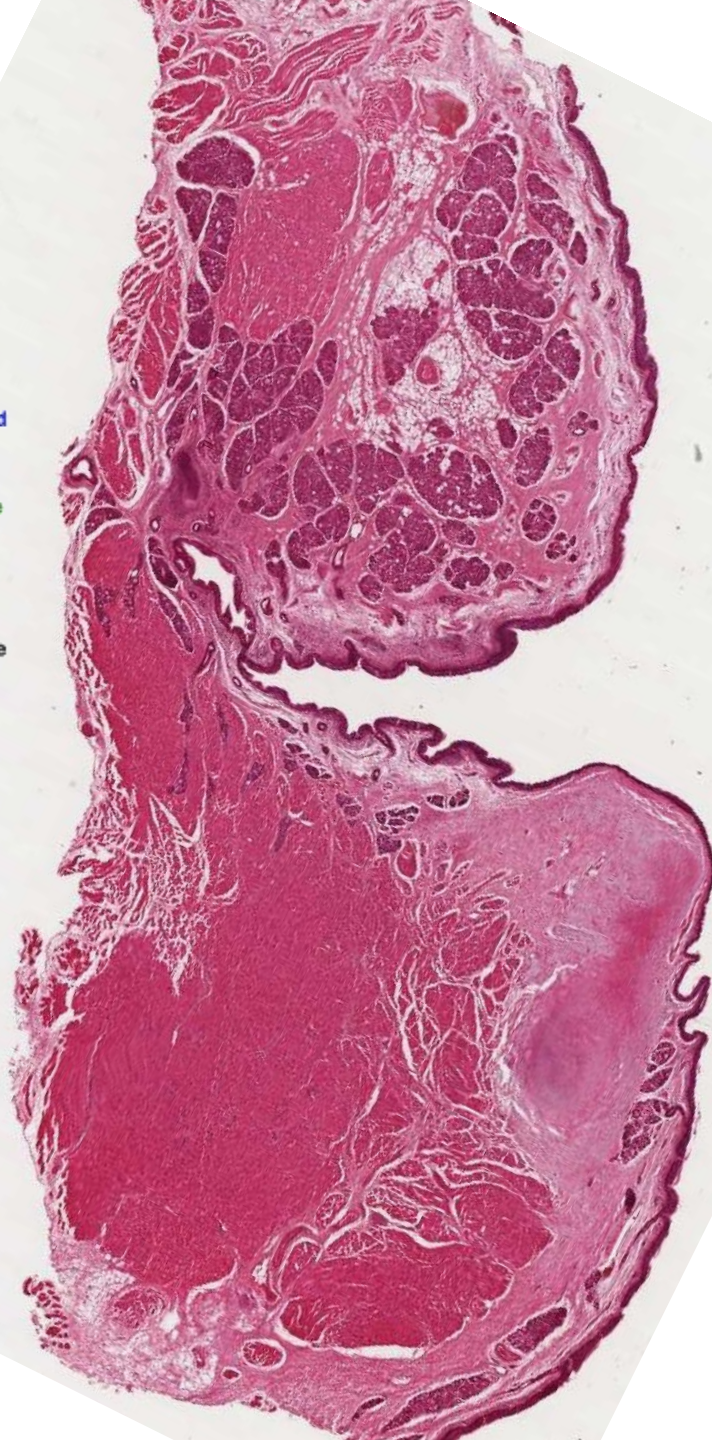
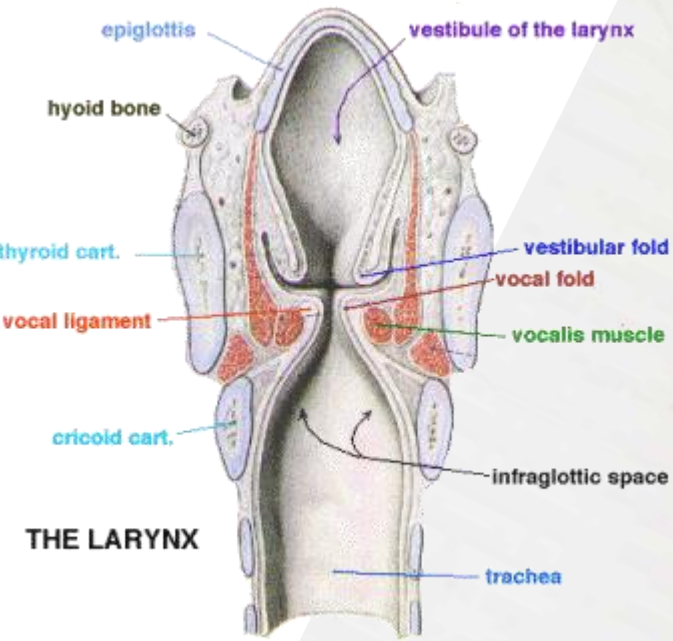
tunica mucosa



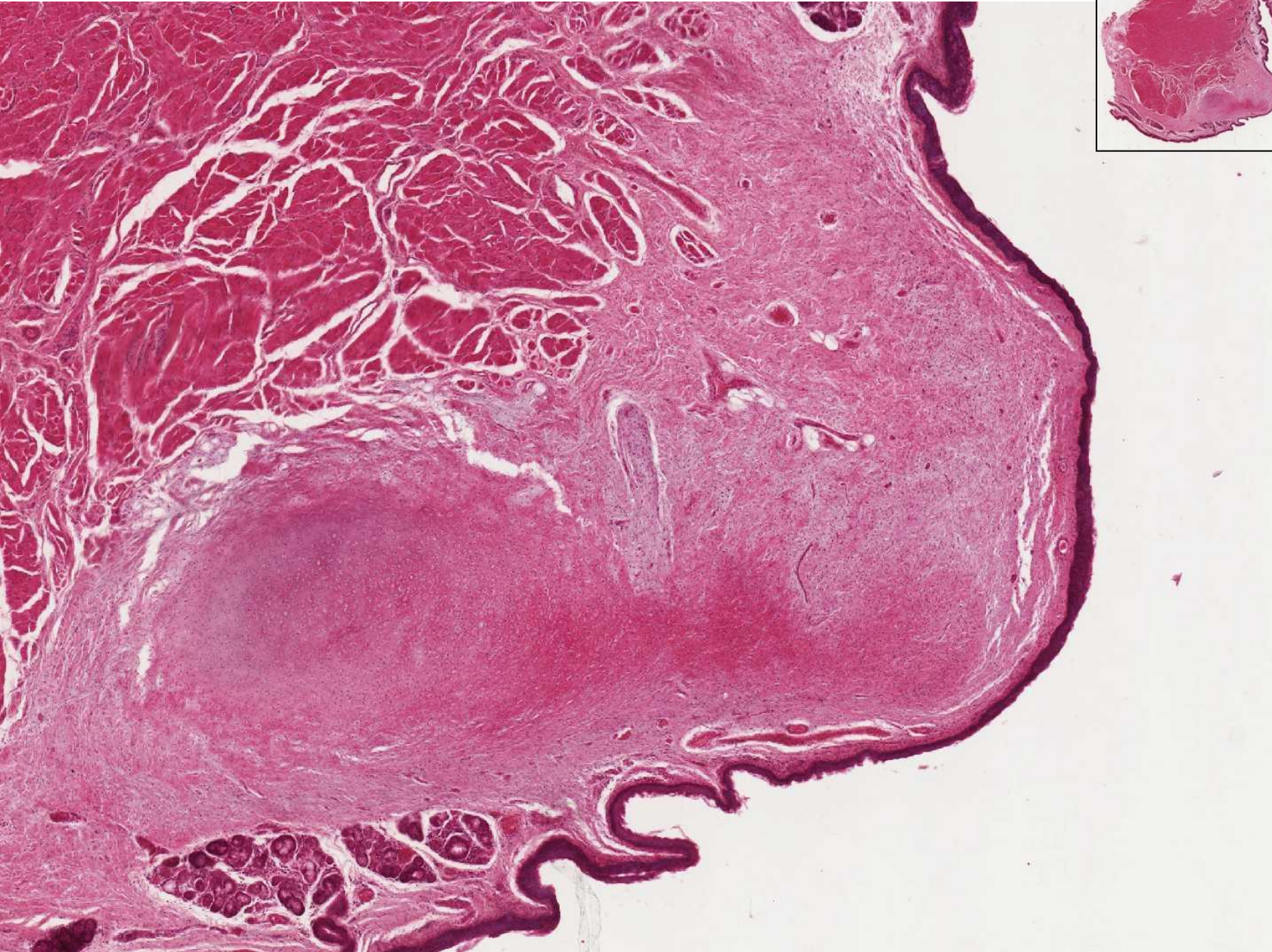
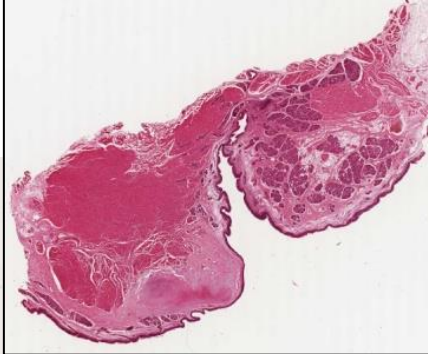
Concha nasi – sensory epithelium (mice)



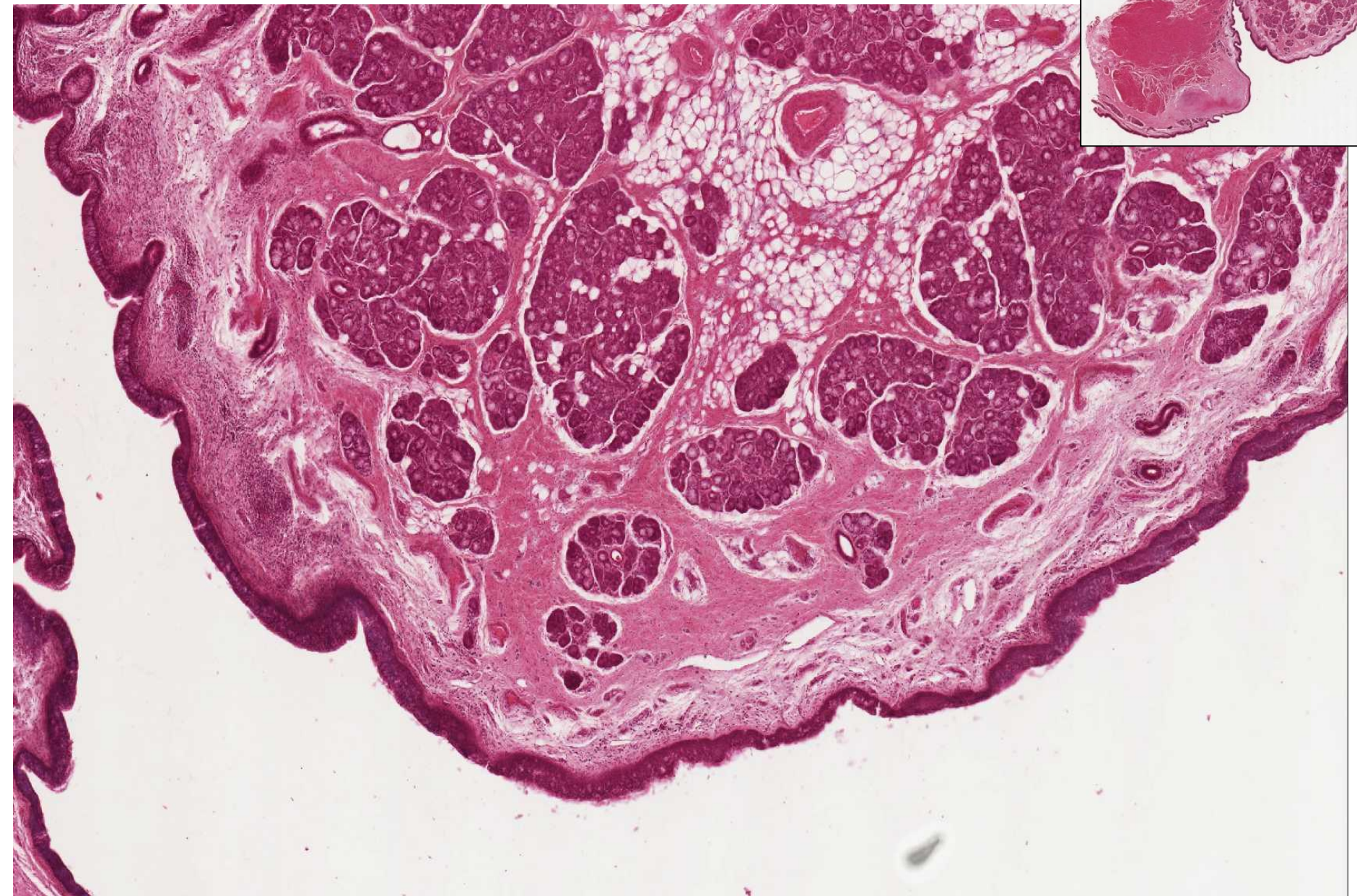
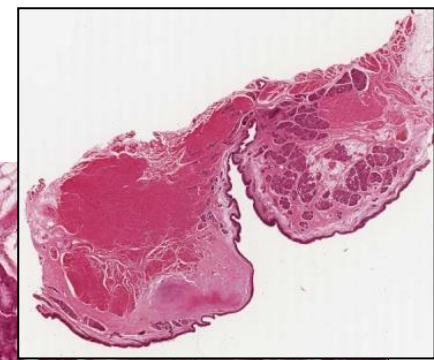
Larynx



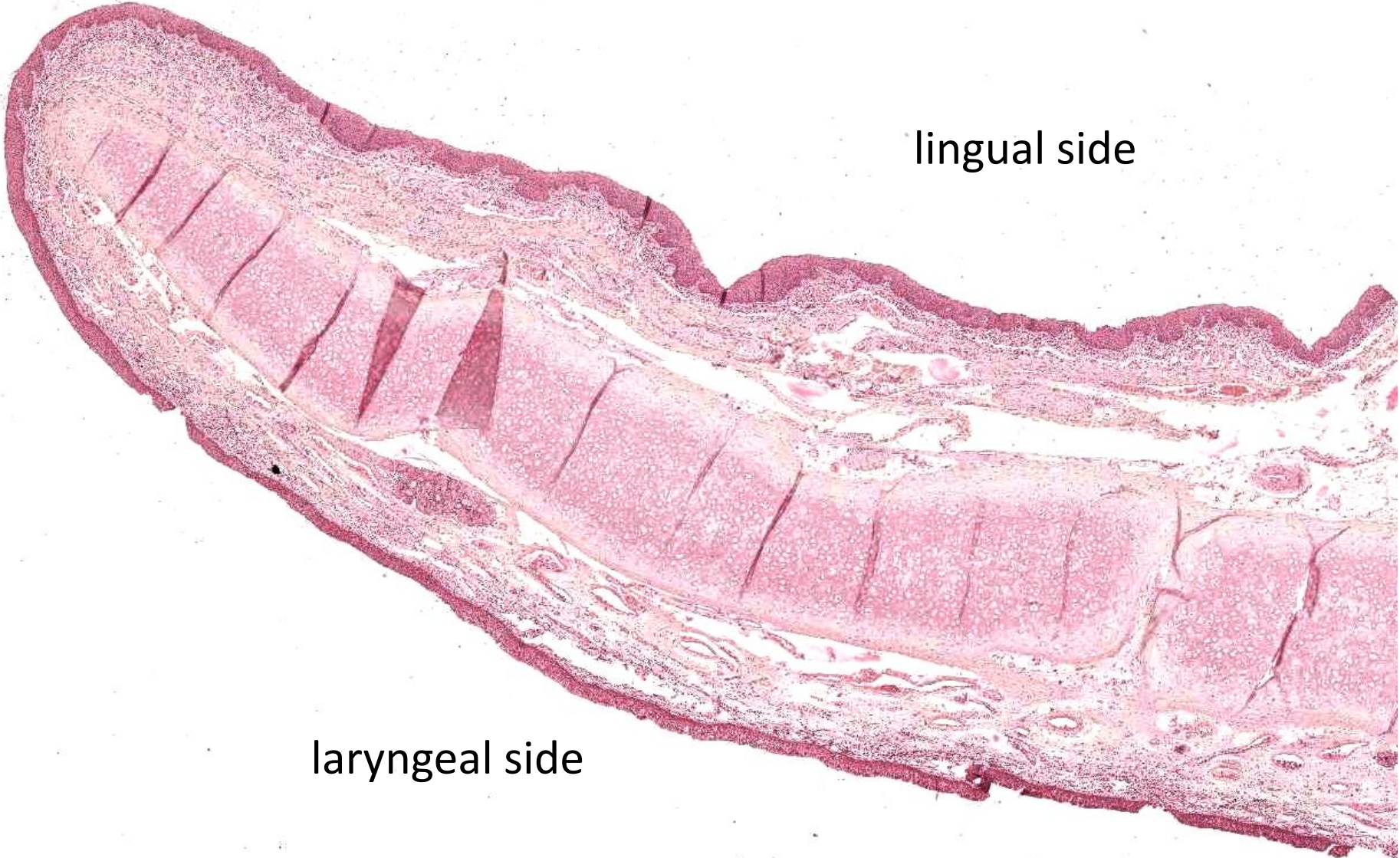
Larynx – plica vocalis



Larynx – plica ventricularis



Epiglottis

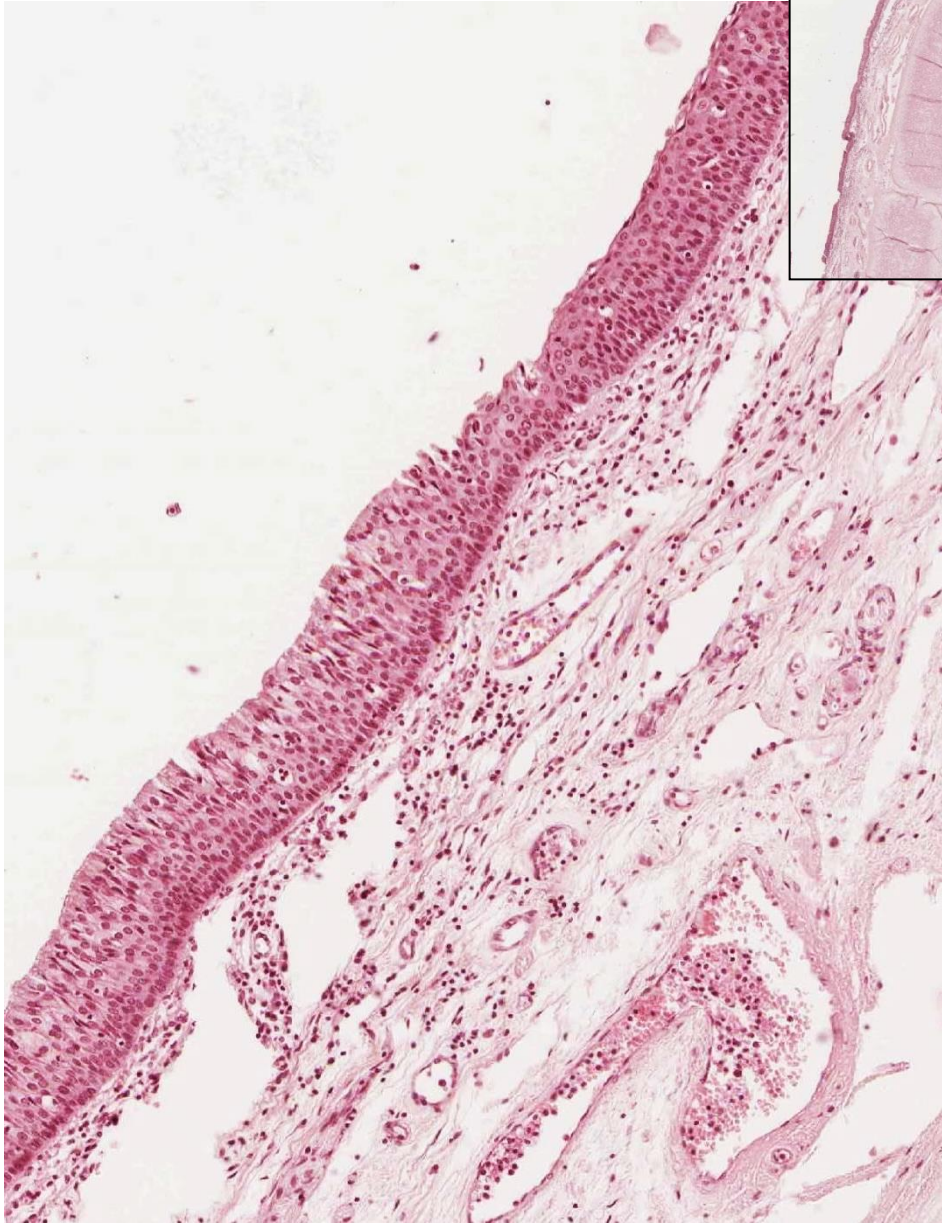


lingual side

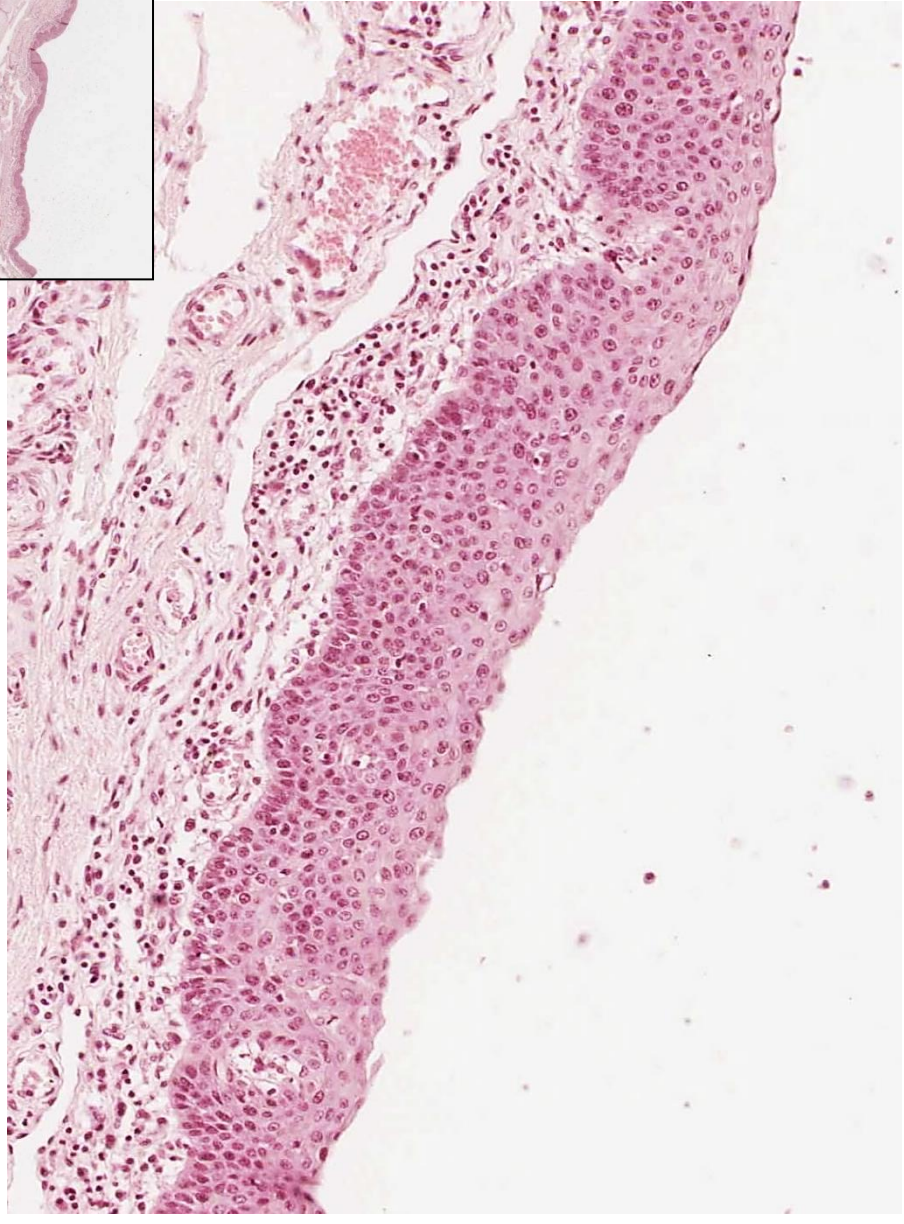
laryngeal side

Epiglottis

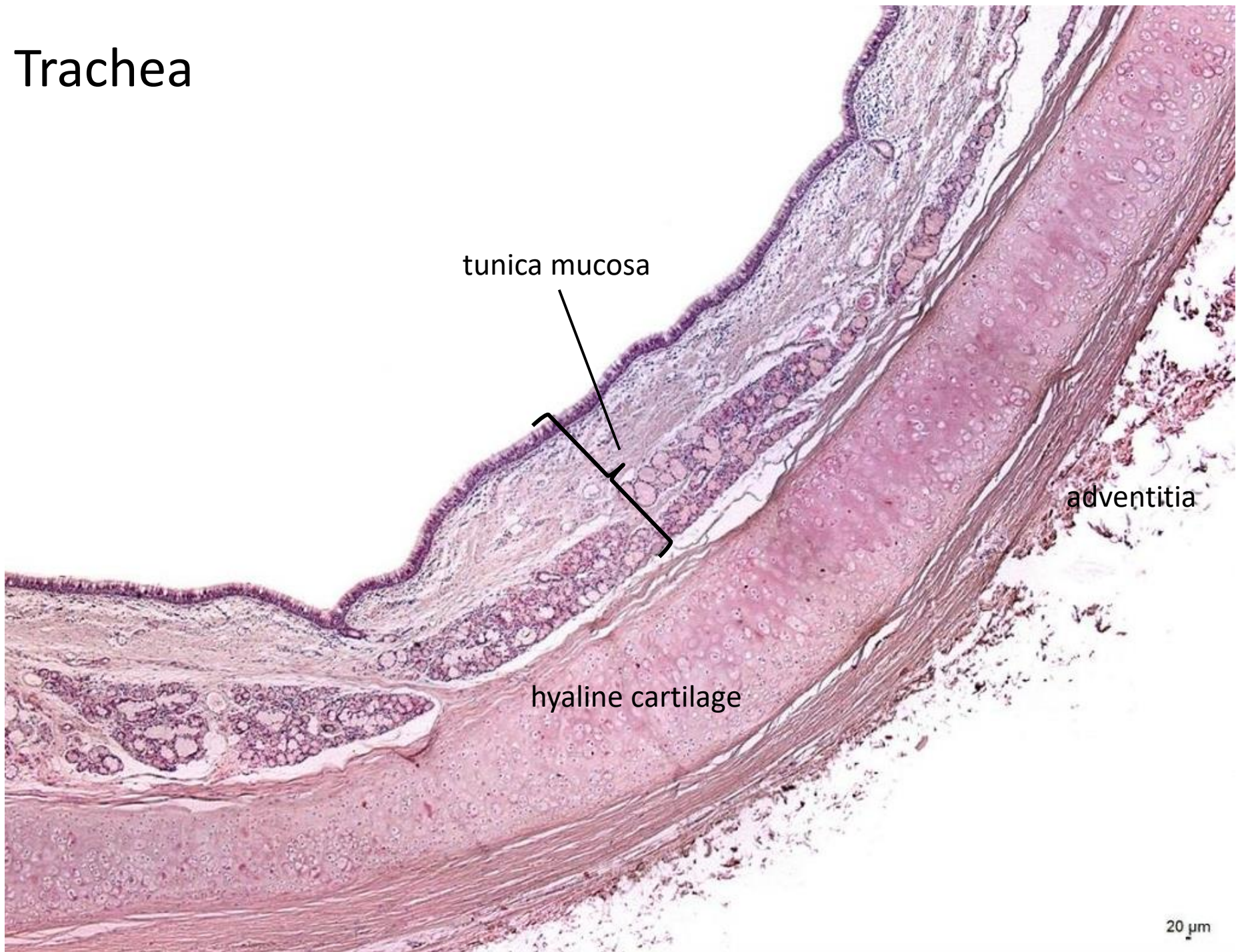
laryngeal side



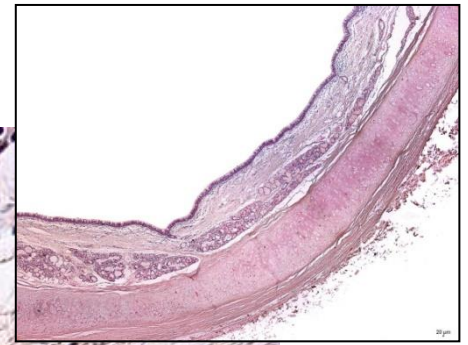
lingual side



Trachea



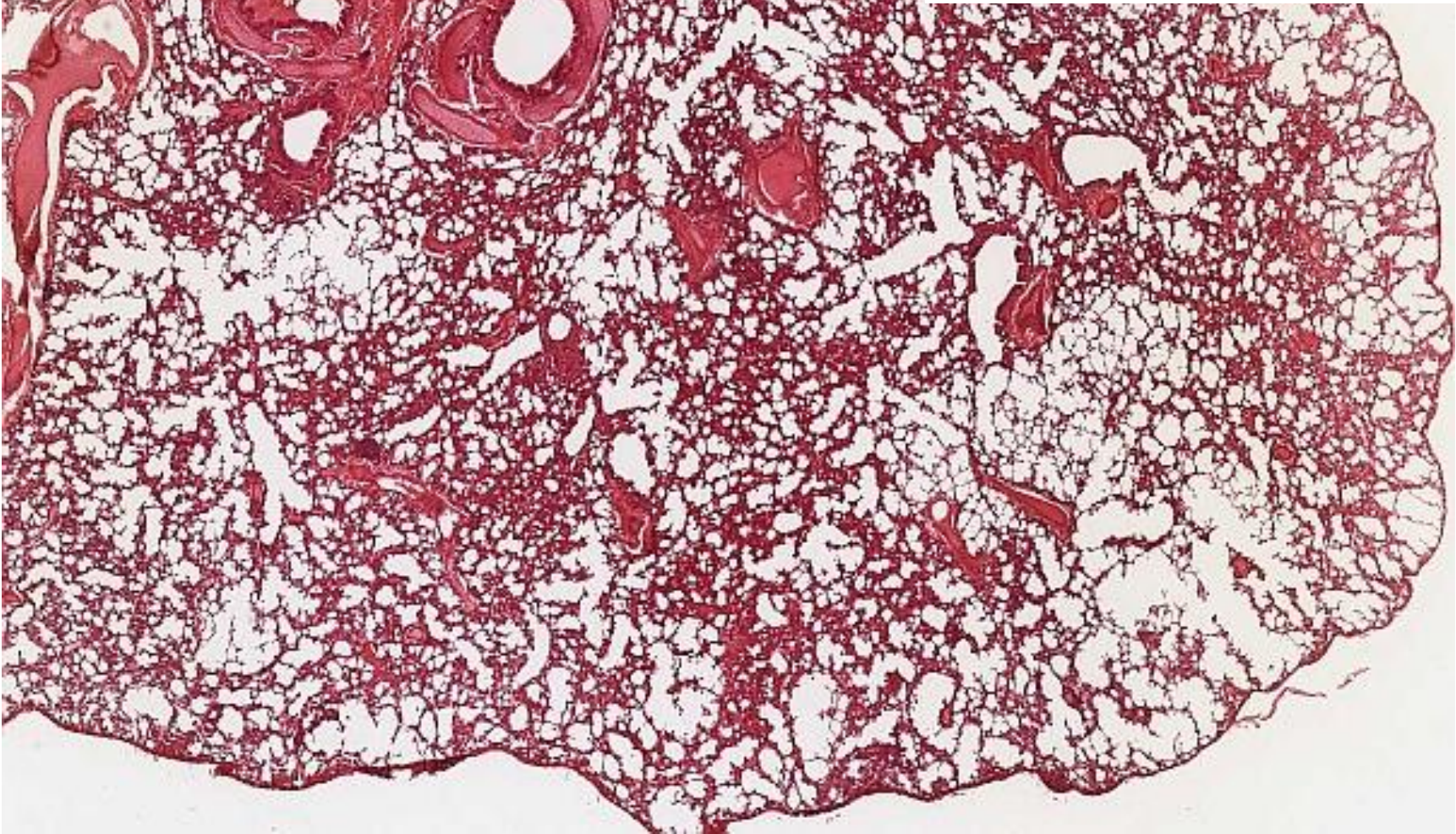
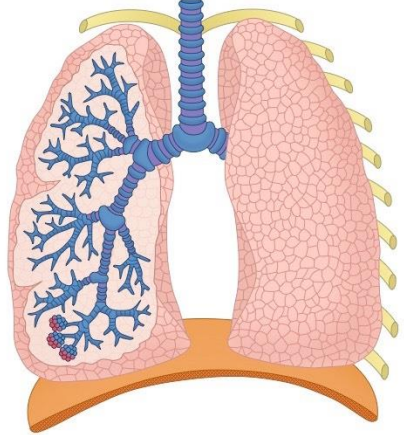
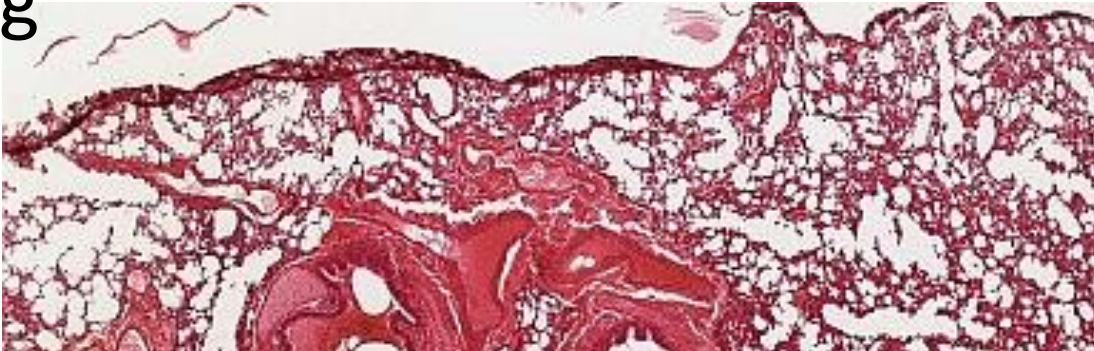
Trachea - mucosa



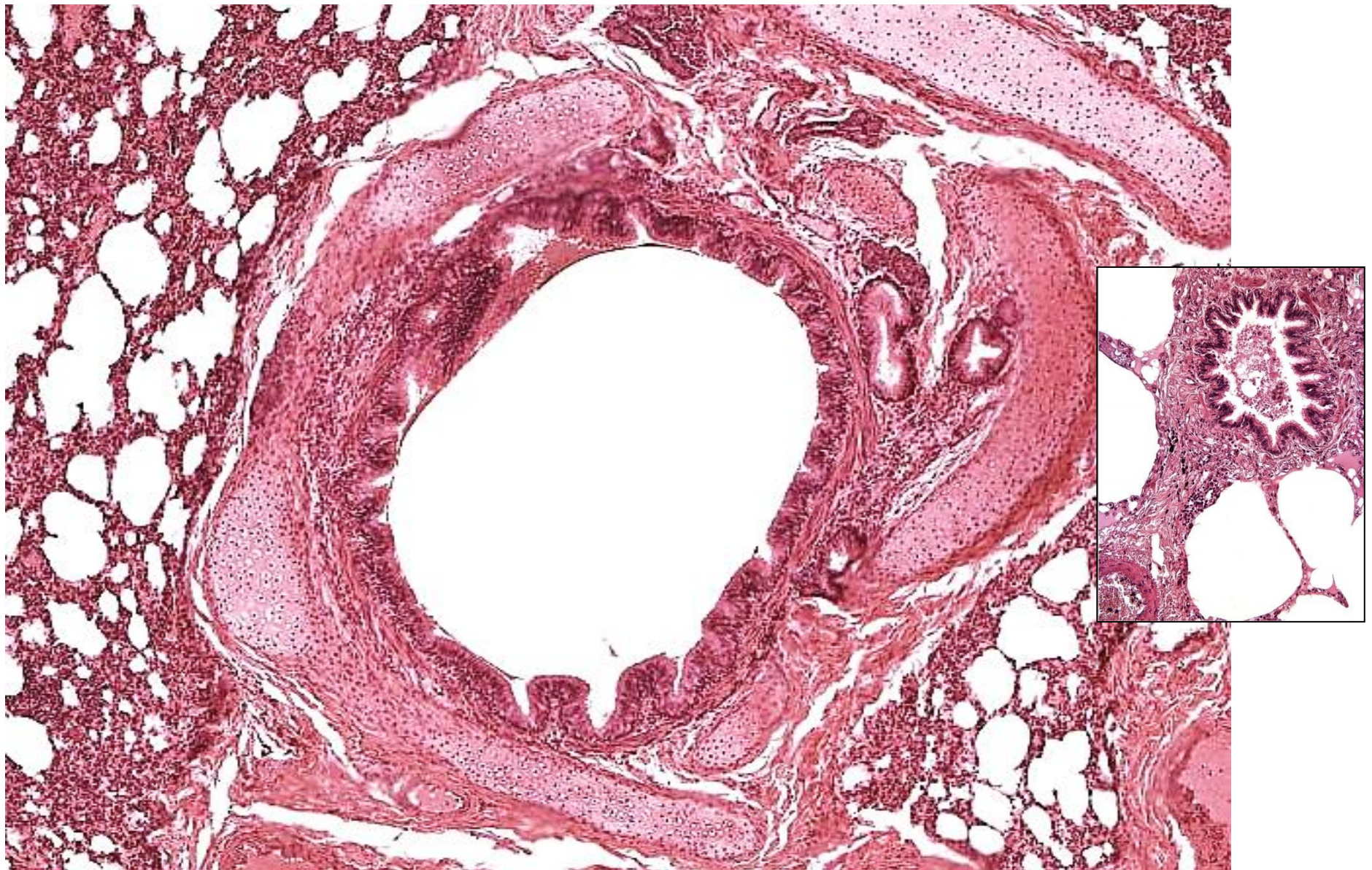
mixed glands

20 μ m

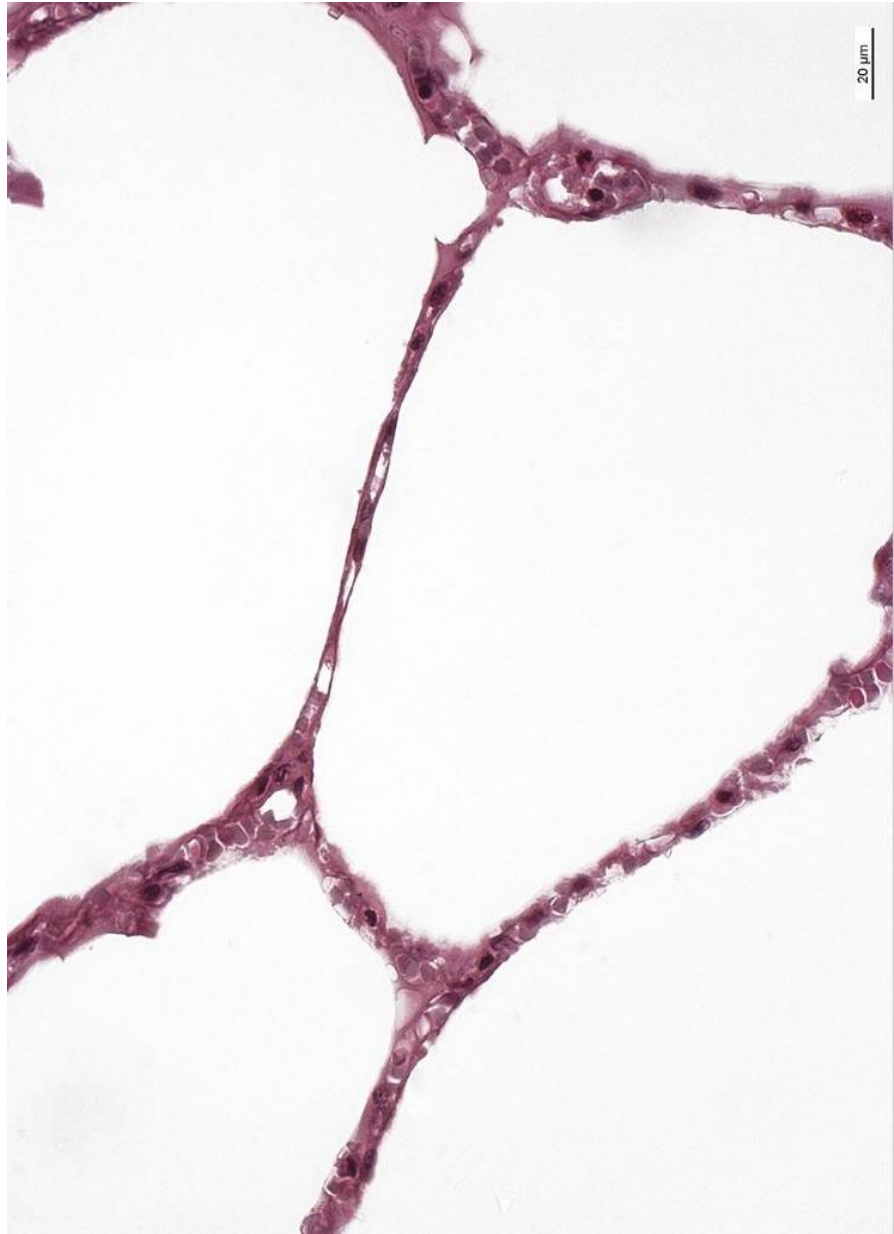
Lung



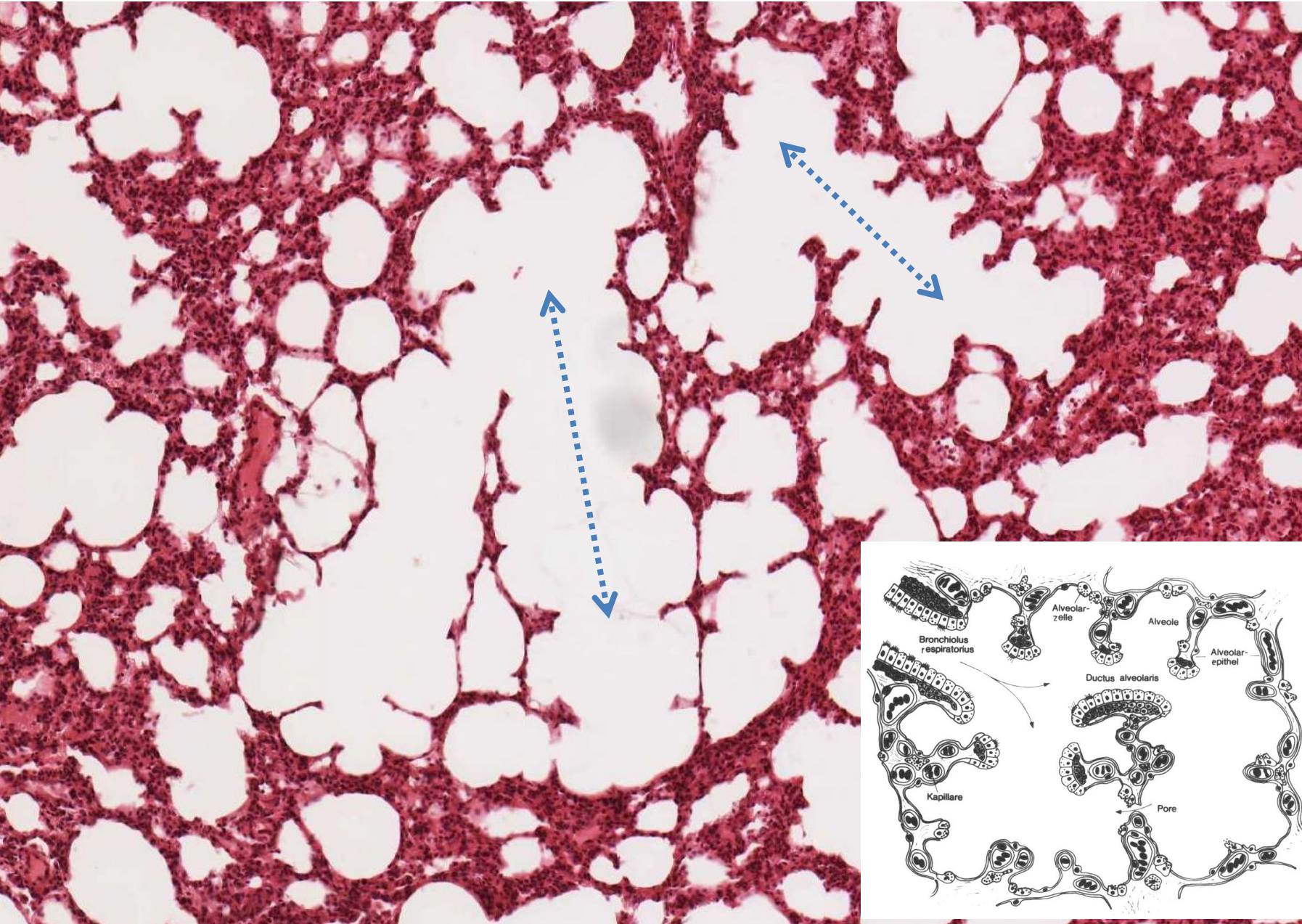
Bronchus / terminal bronchiole



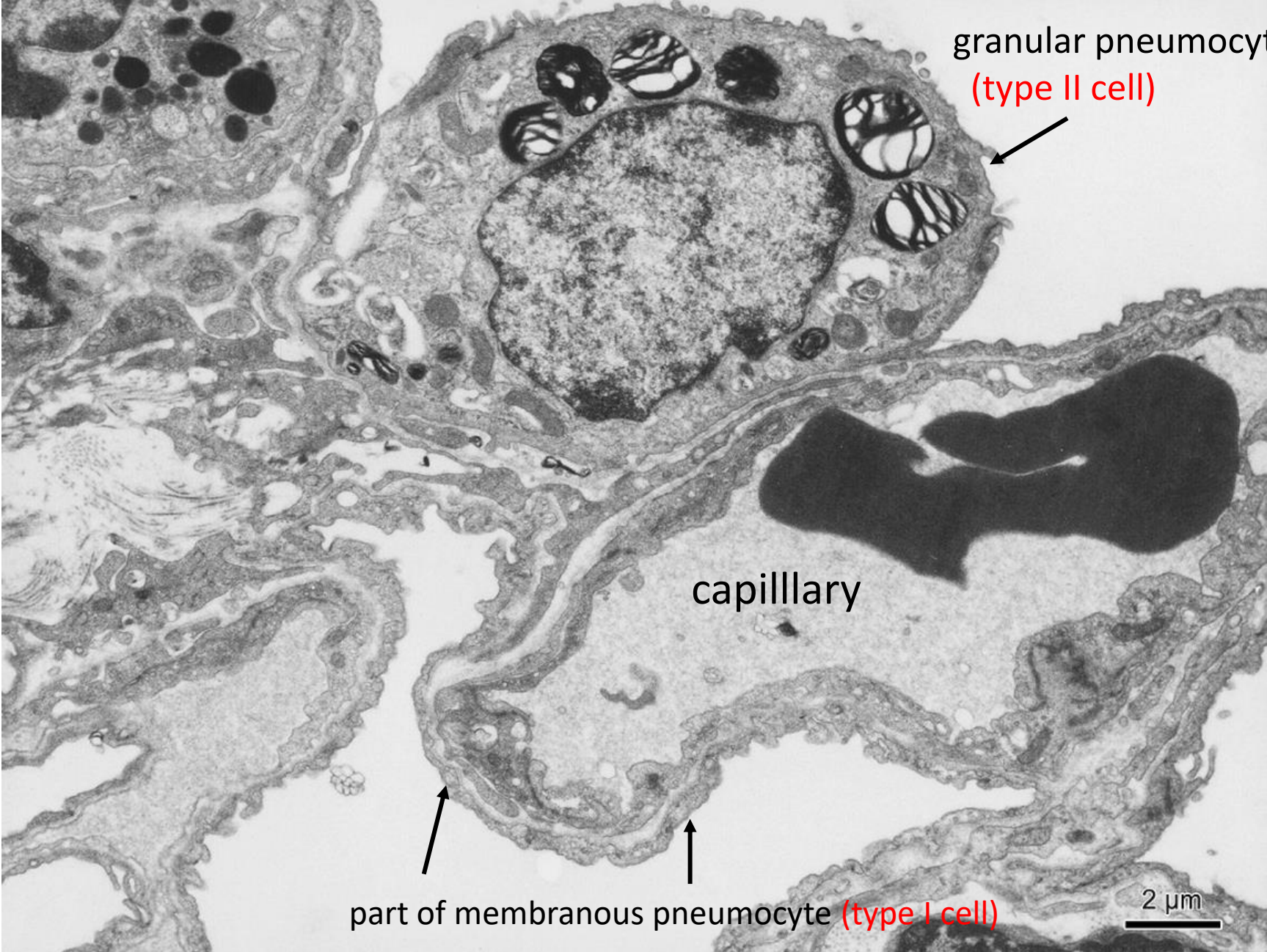
Terminal bronchiole / alveoli



Ductus alveolaris (alveolar duct)



Interalveolar septum, alveolar epithelium



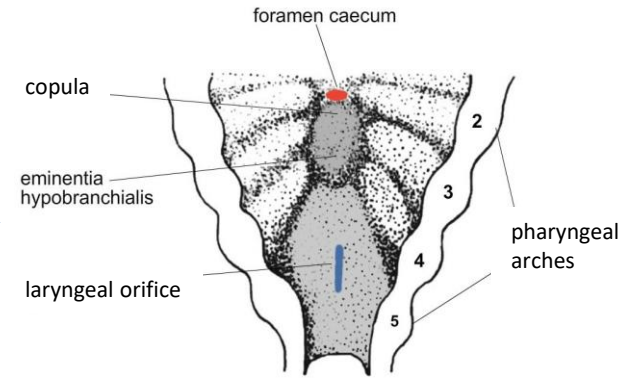
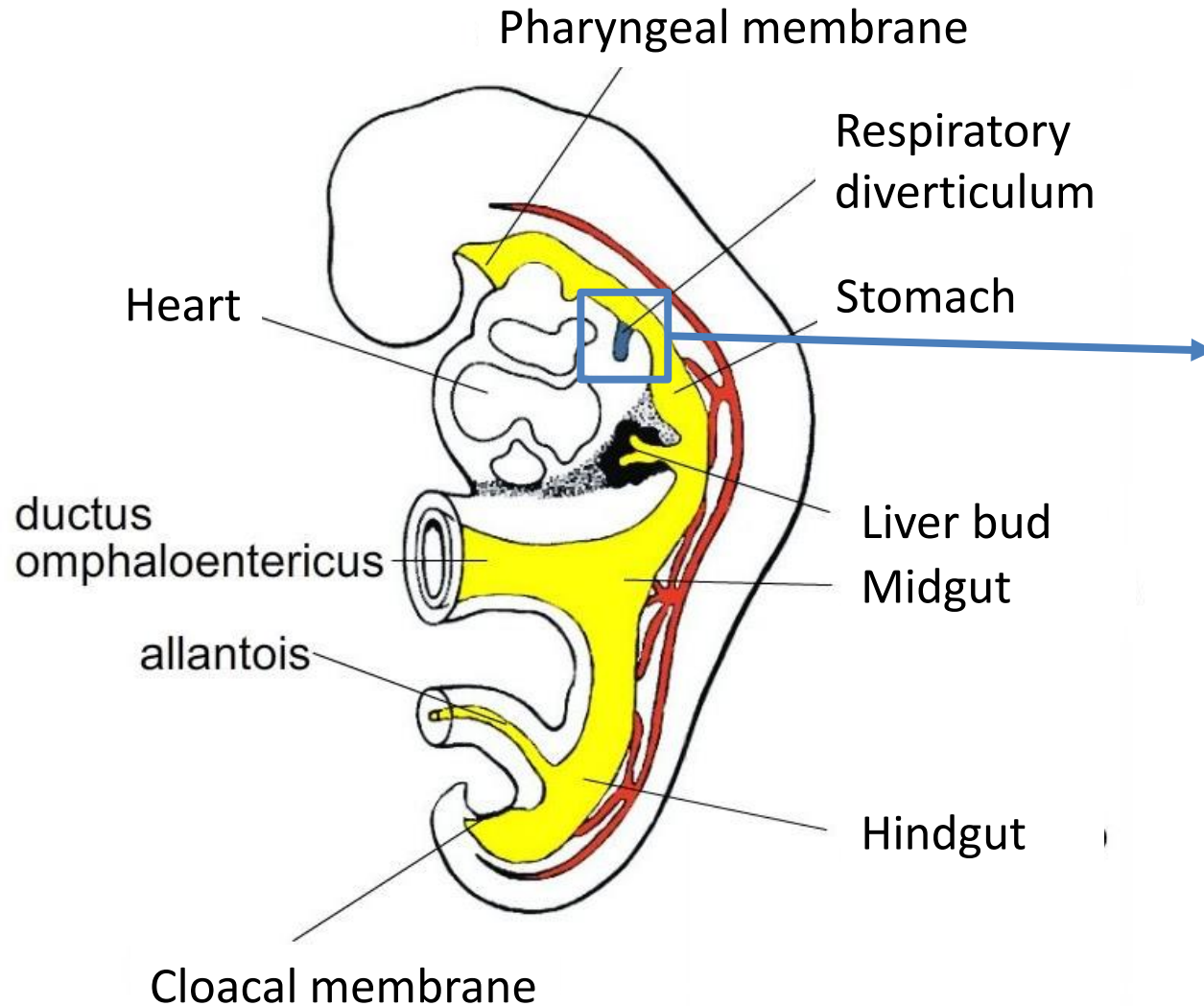
granular pneumocyte
(type II cell)

capillary

part of membranous pneumocyte (type I cell)

2 μ m

Development of respiratory system

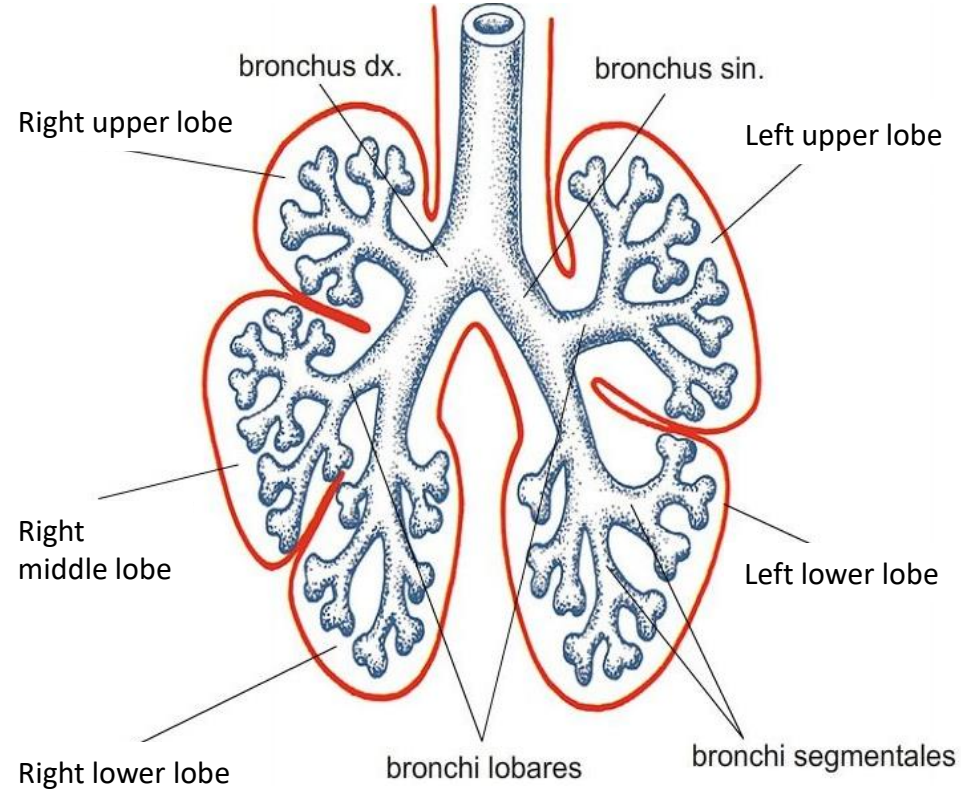
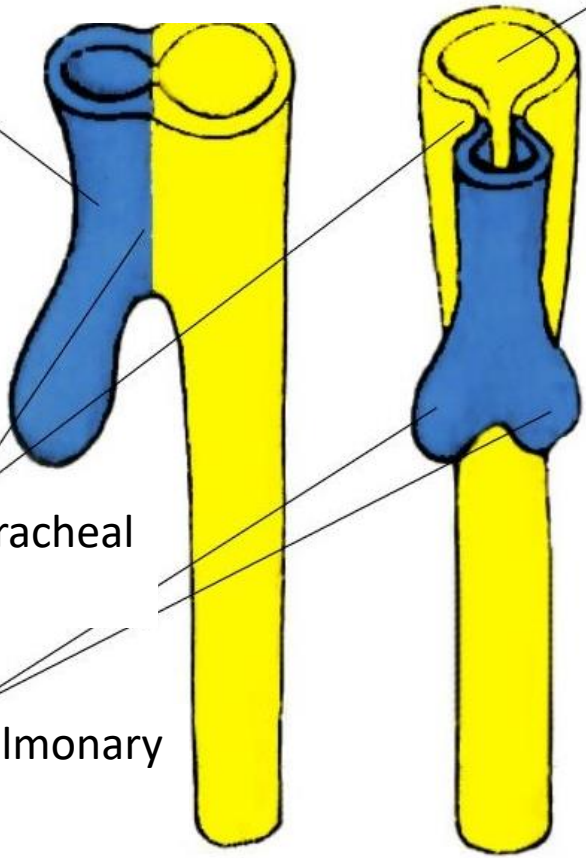


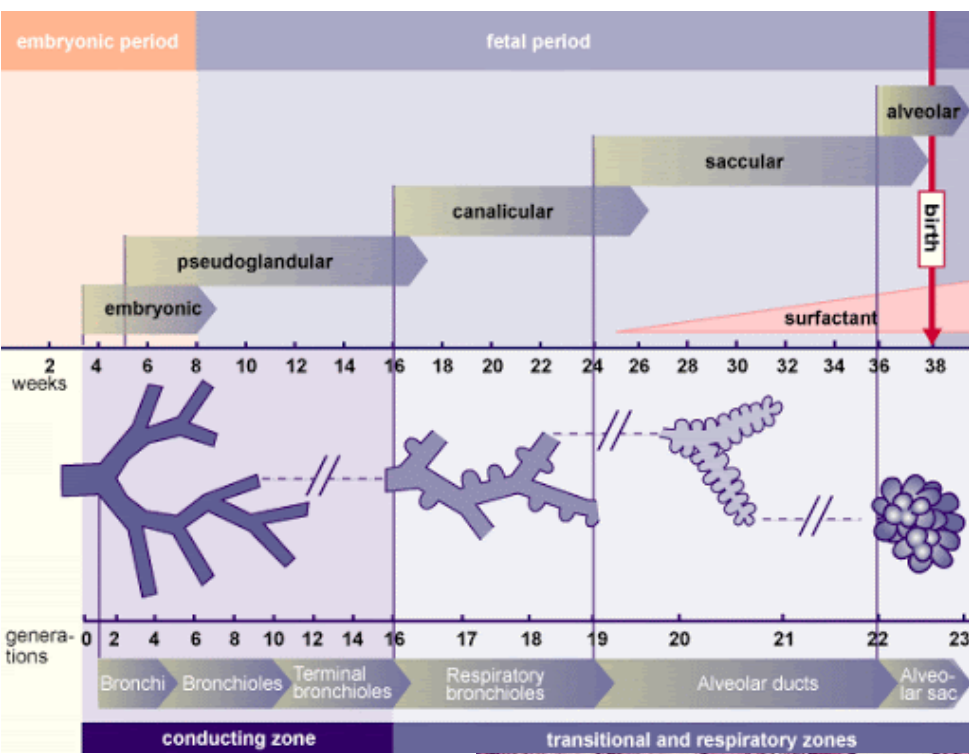
Respiratory diverticulum

Foregut

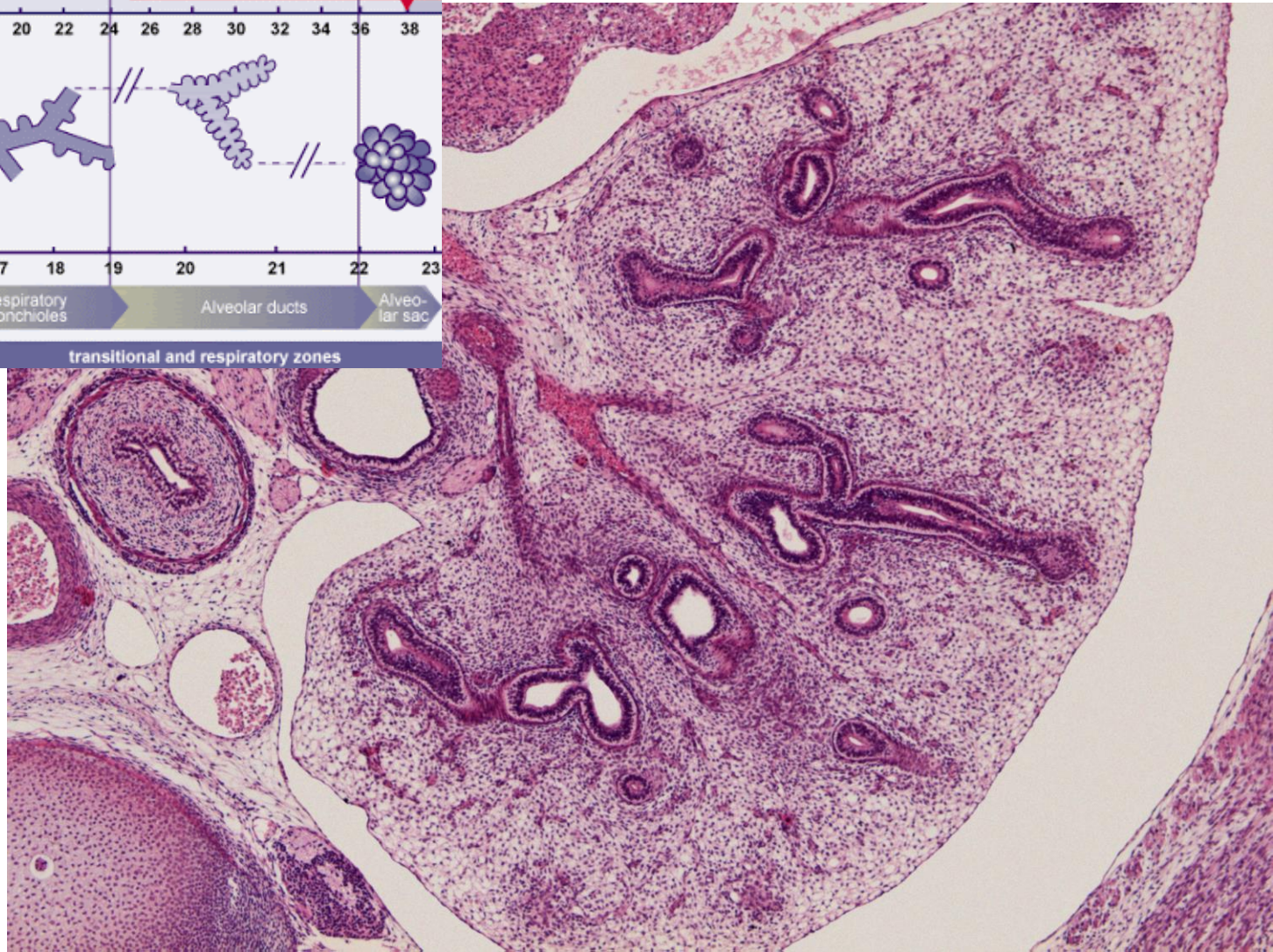
Esophagotracheal ridge

Bronchopulmonary buds





Human embryo (8th week)





Slides Respiratory system

24. Concha nasi

25. Epiglottis (HE)

26. Larynx

27. Trachea

28. Epiglottis (orcein)

29. Pulmo

Atlas EM

Olfactory epithelium (23)

Bronchiolus (60)

Alveolar epithelium (61)

Development of lung (83)