



LYMPHATIC SYSTEM

- Lymphoid tissue, lymphoid nodule (follicle)

- Lymphoid organs:

Central → thymus, (red bone marrow)

Peripheral → lymph node

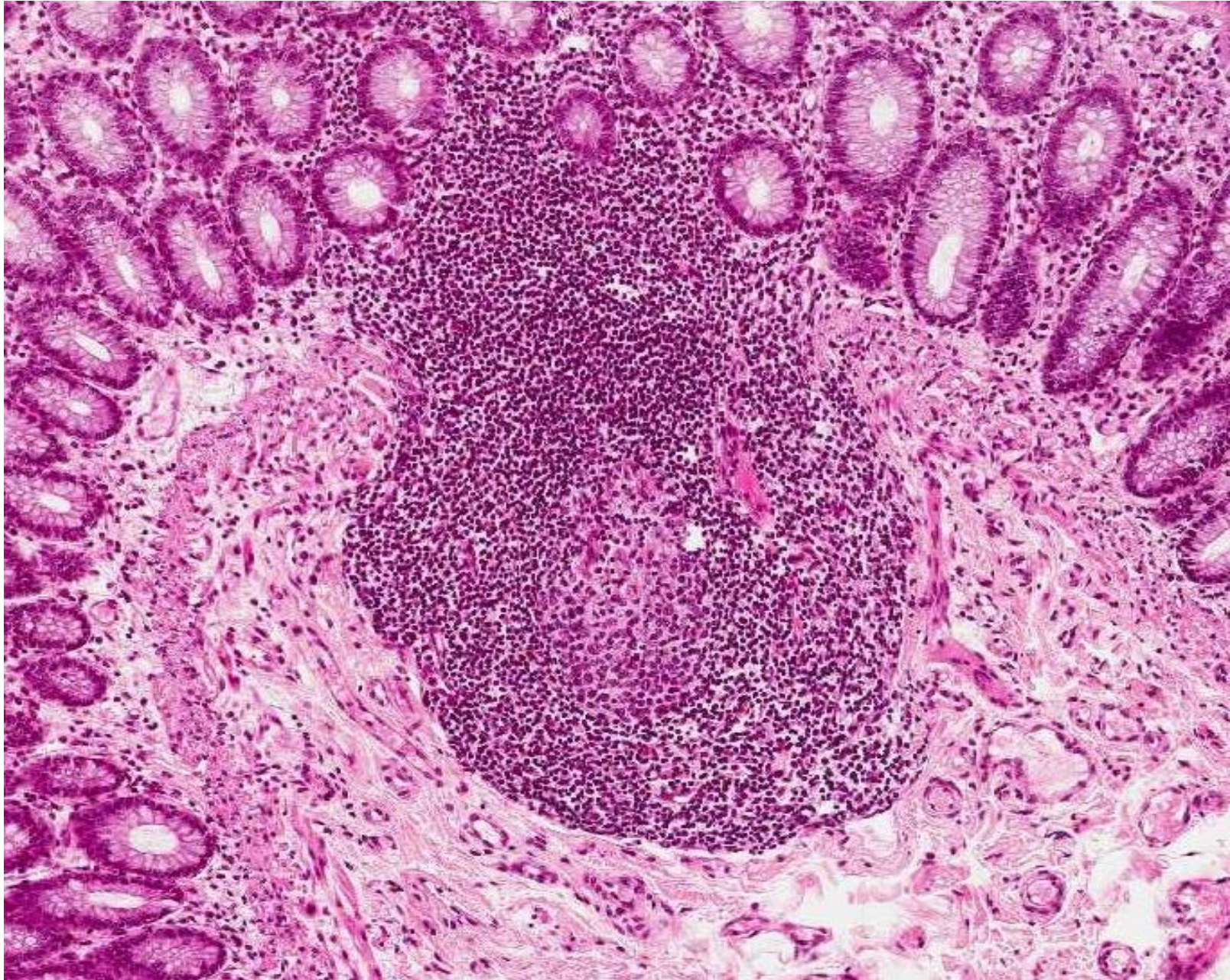
spleen

tonsils

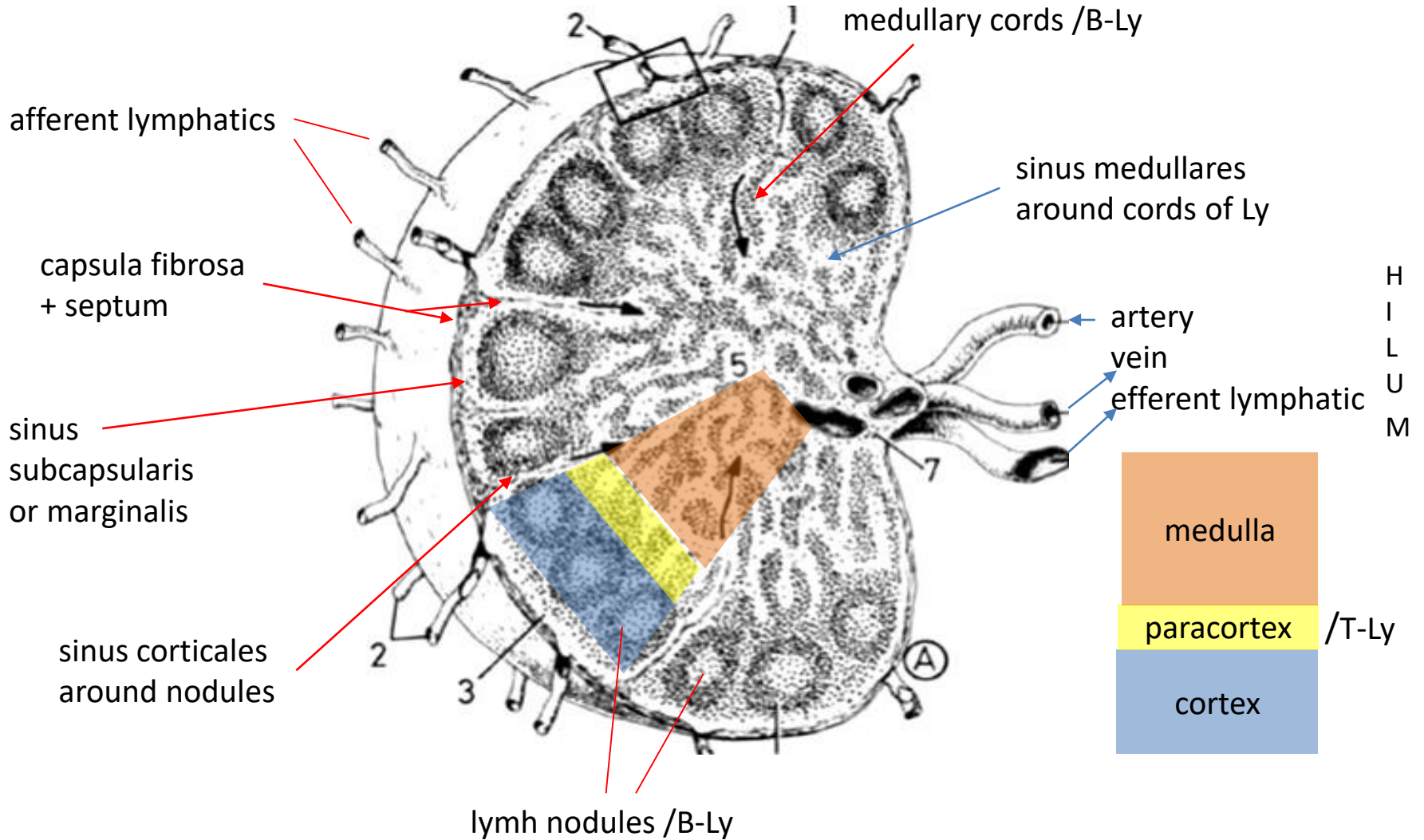
mucosa-associated lymphoid
tissue /MALT)

- Lymphatic vessels

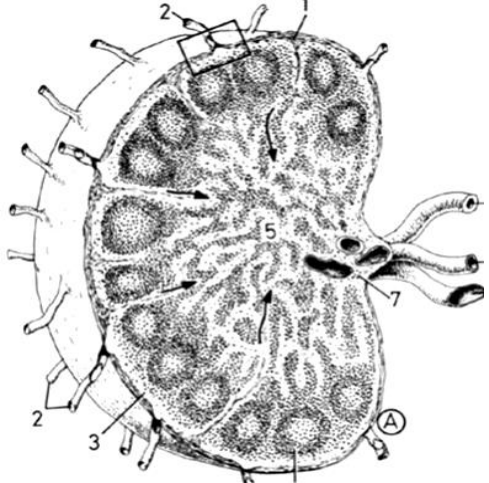
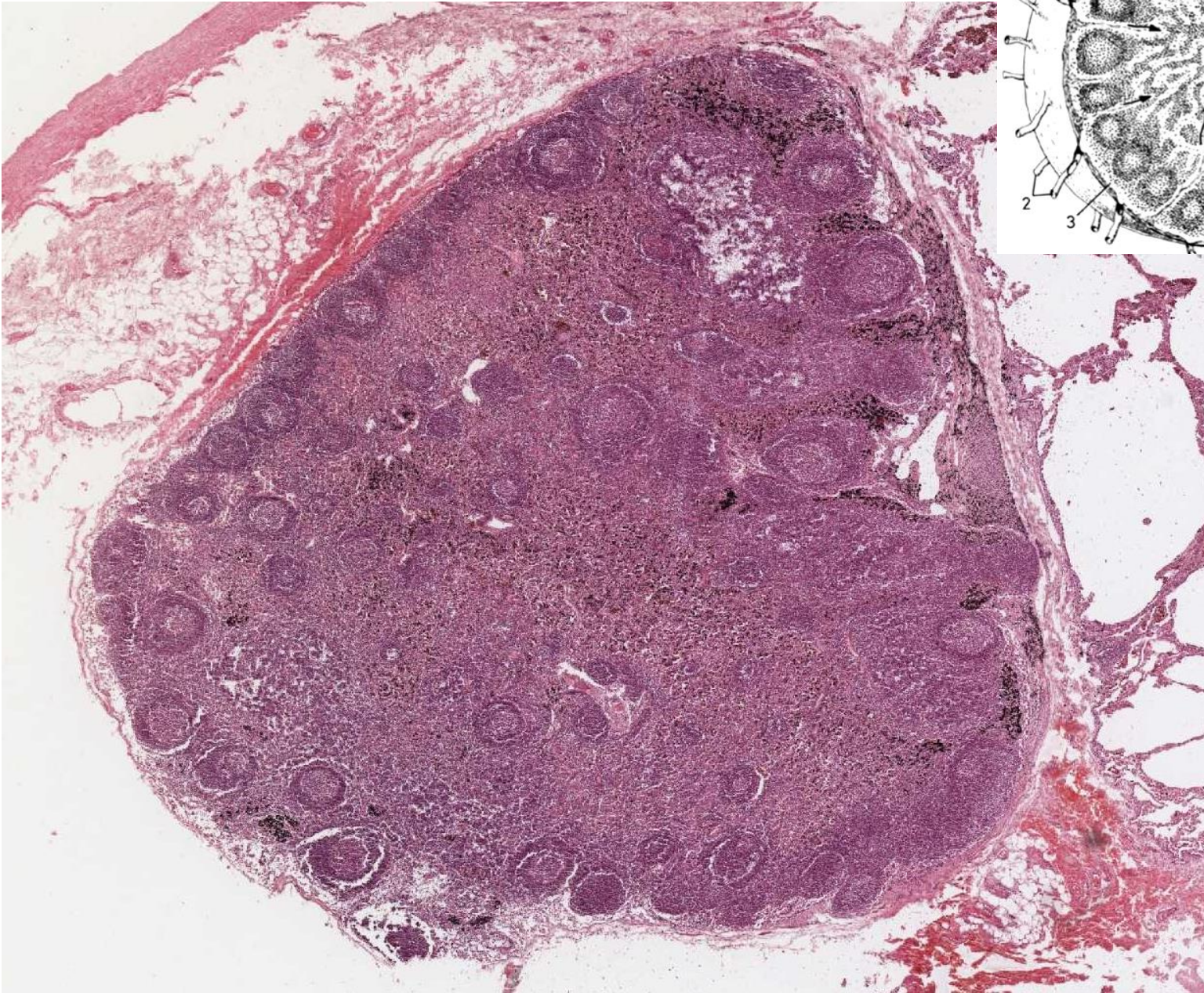
lymphoid nodule (follicle) in the intestinal mucosa



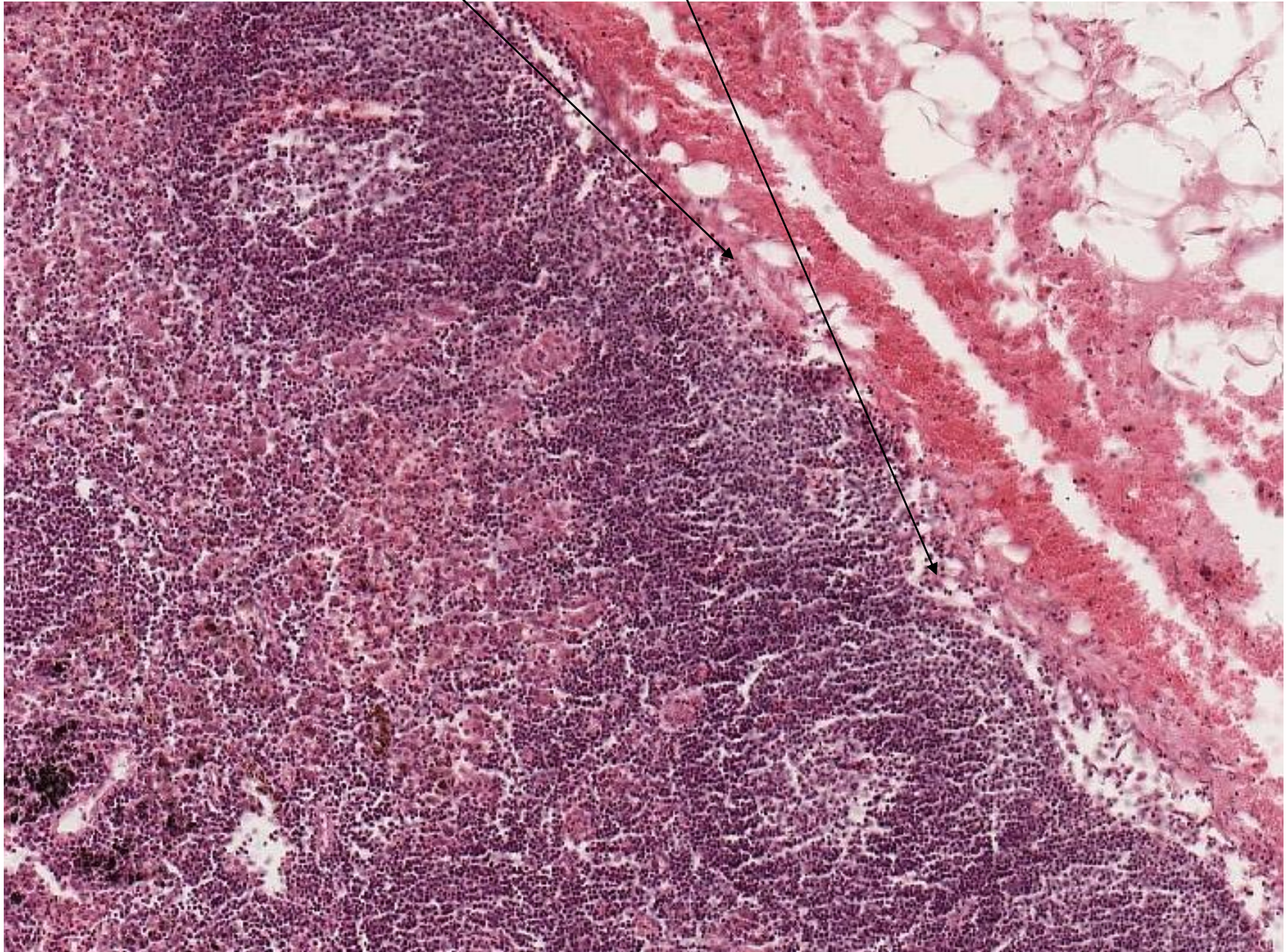
LYMPH NODE



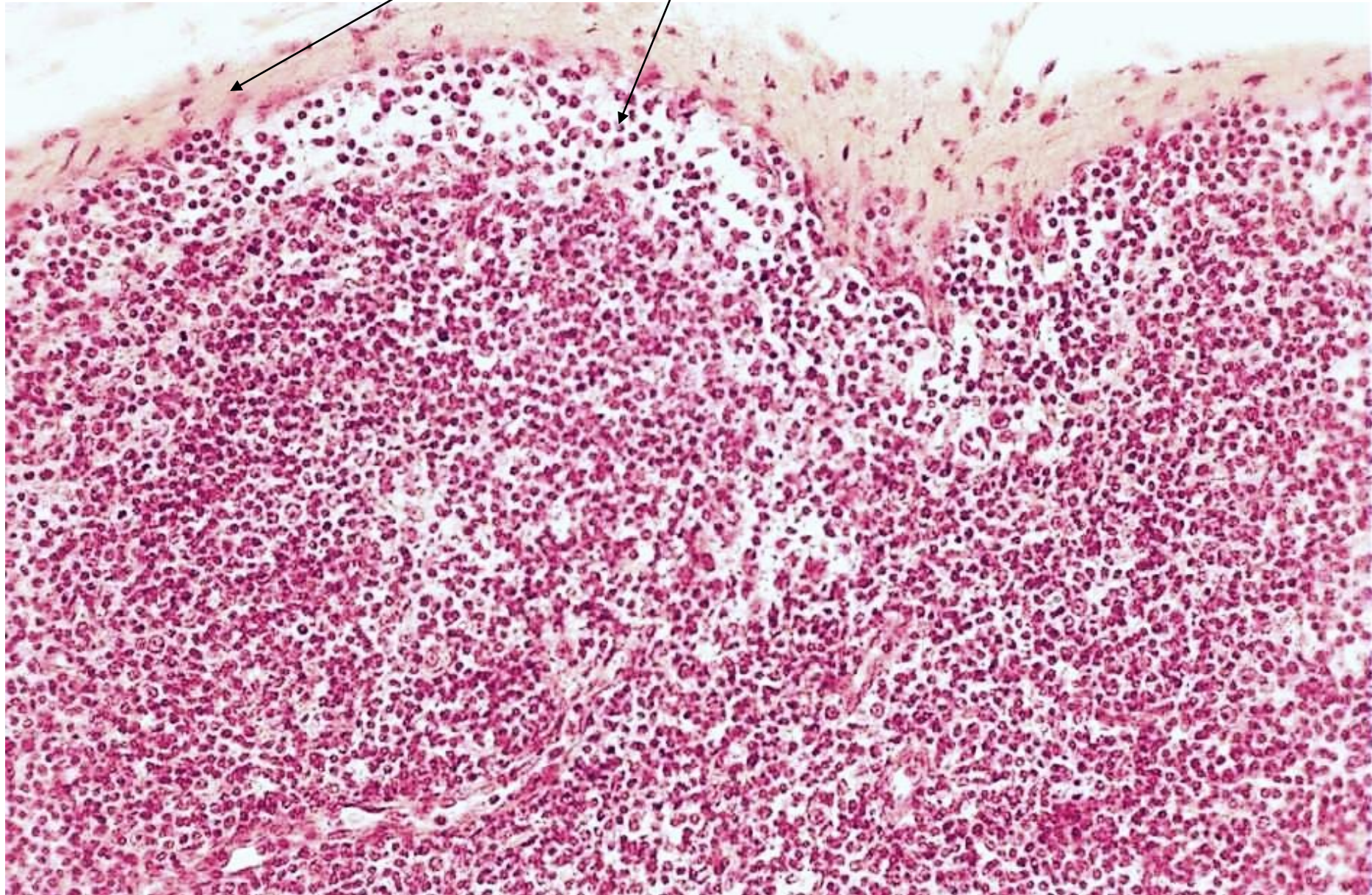
Lymph node



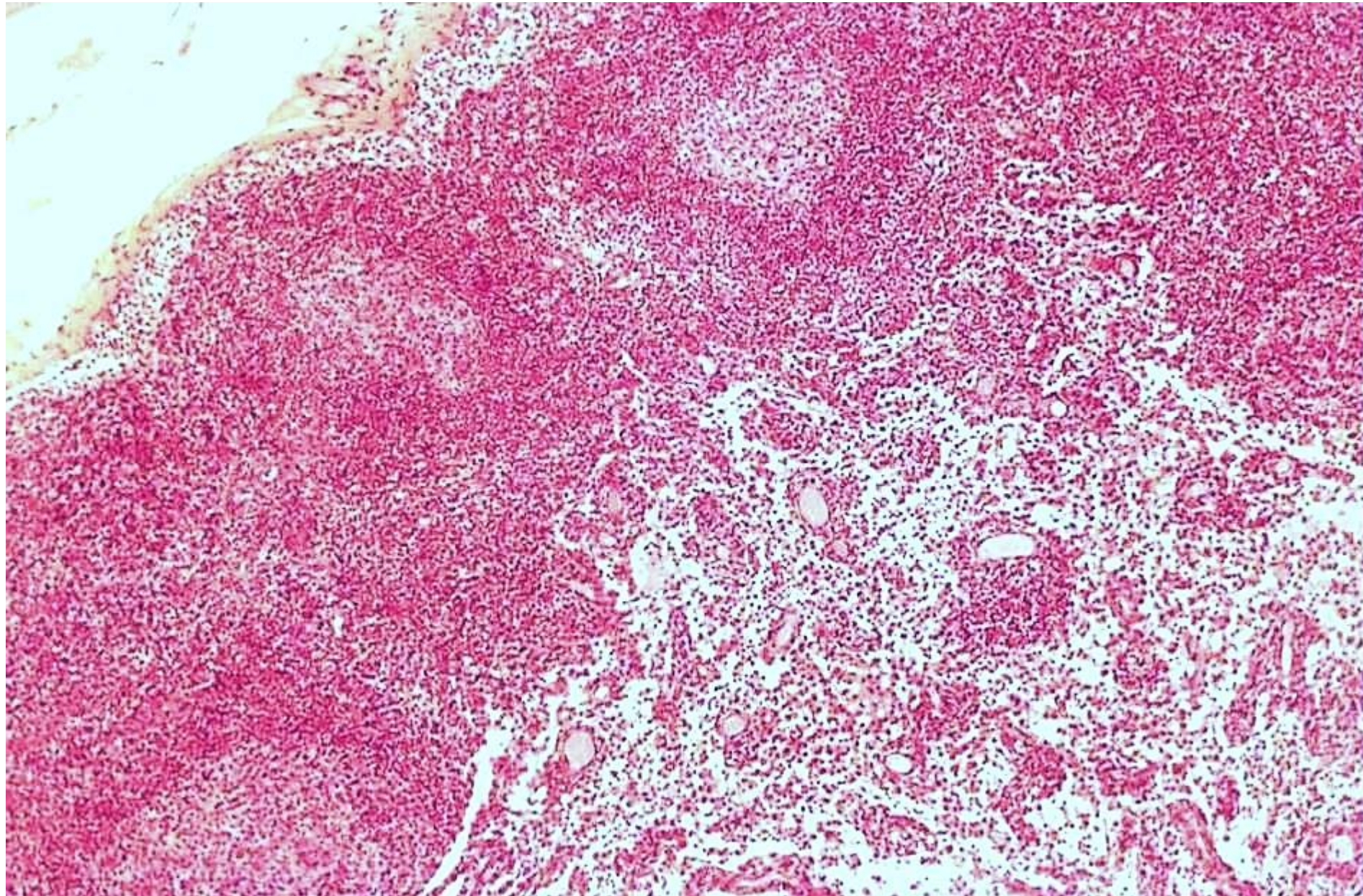
Lymph node – capsule, subcapsular (marginal) sinus, cortex



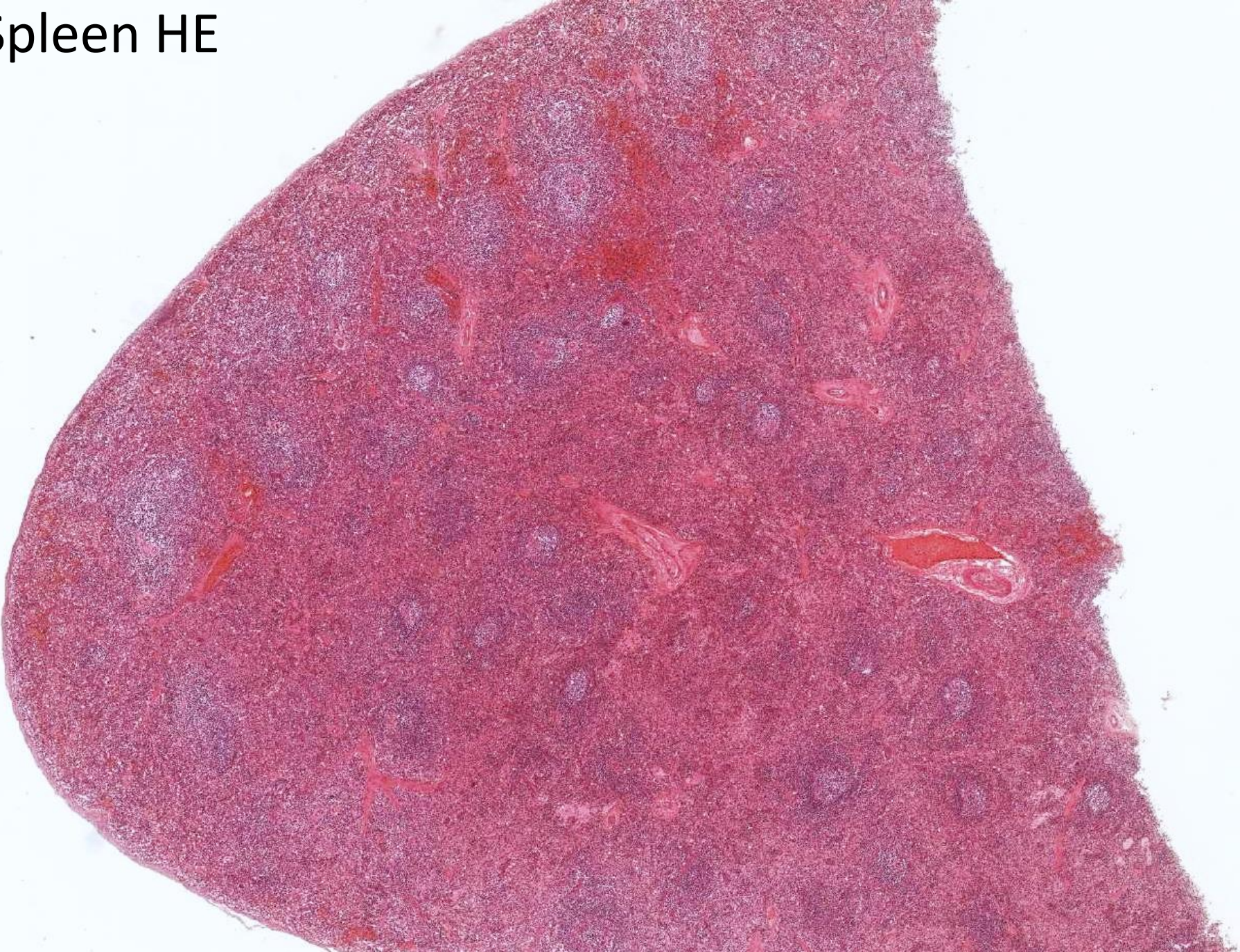
Lymph node – capsule, subcapsular (marginal) sinus, cortex



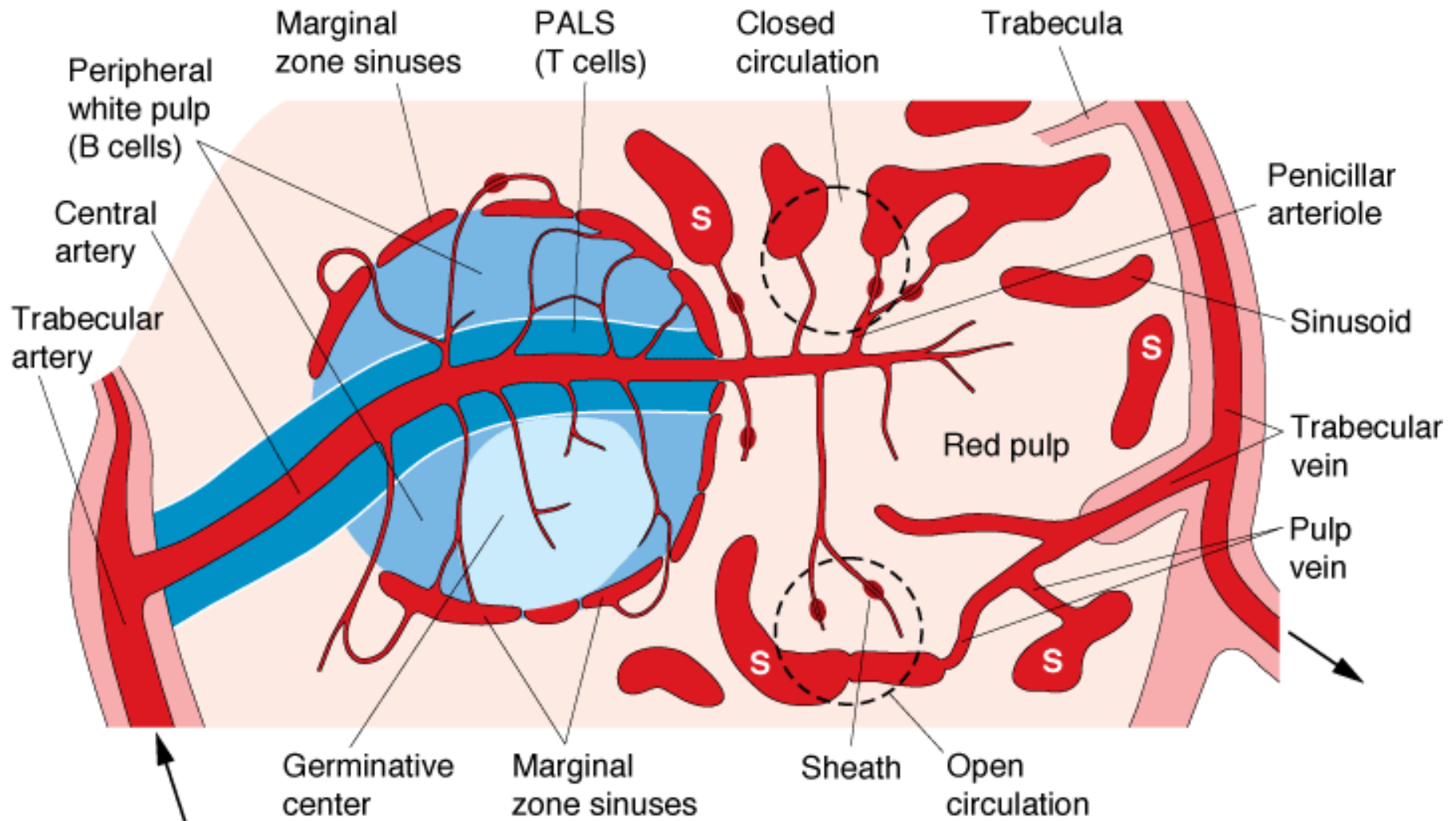
Lymph node – cortex, medulla



Spleen HE



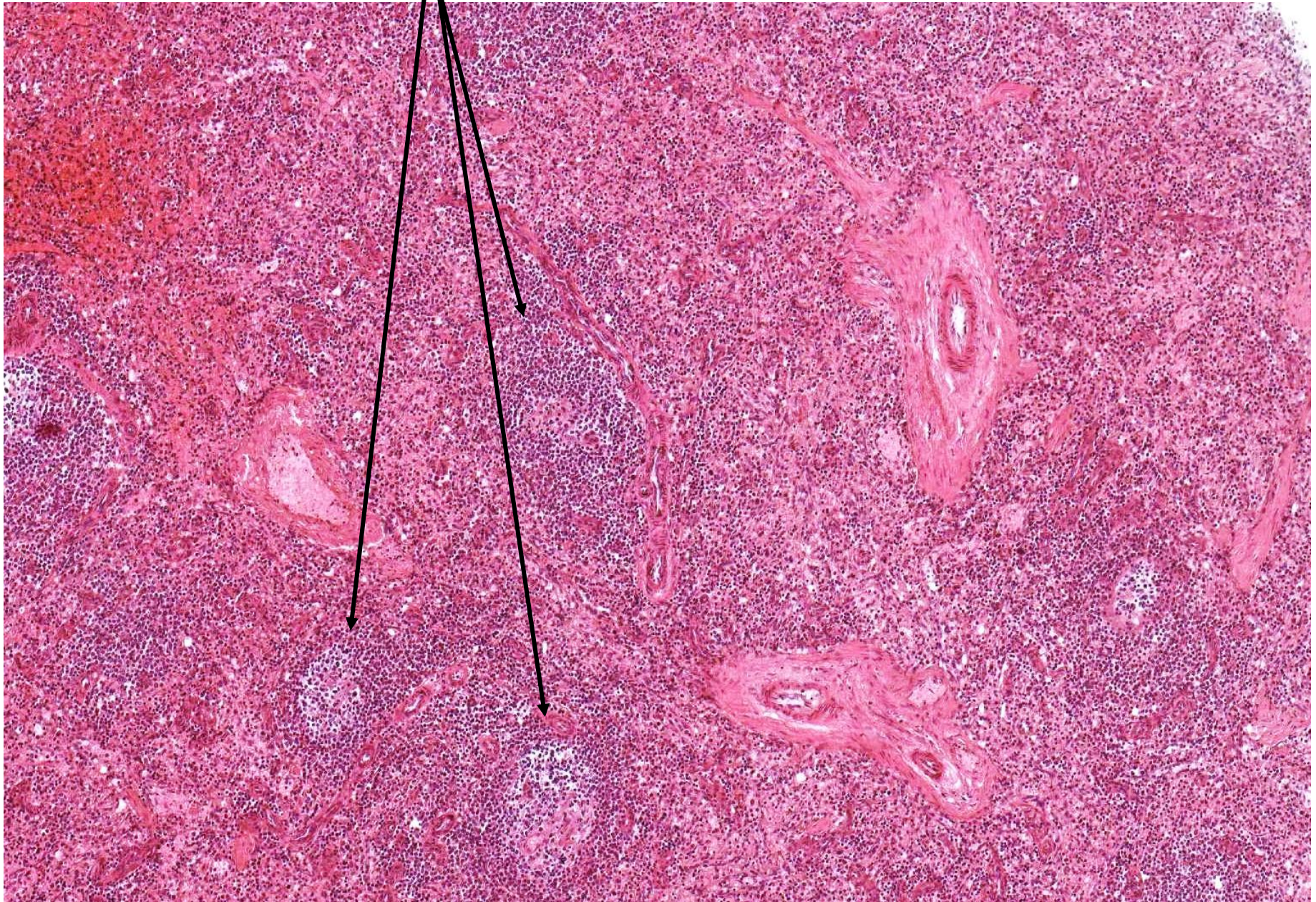
Blood circulation in the spleen



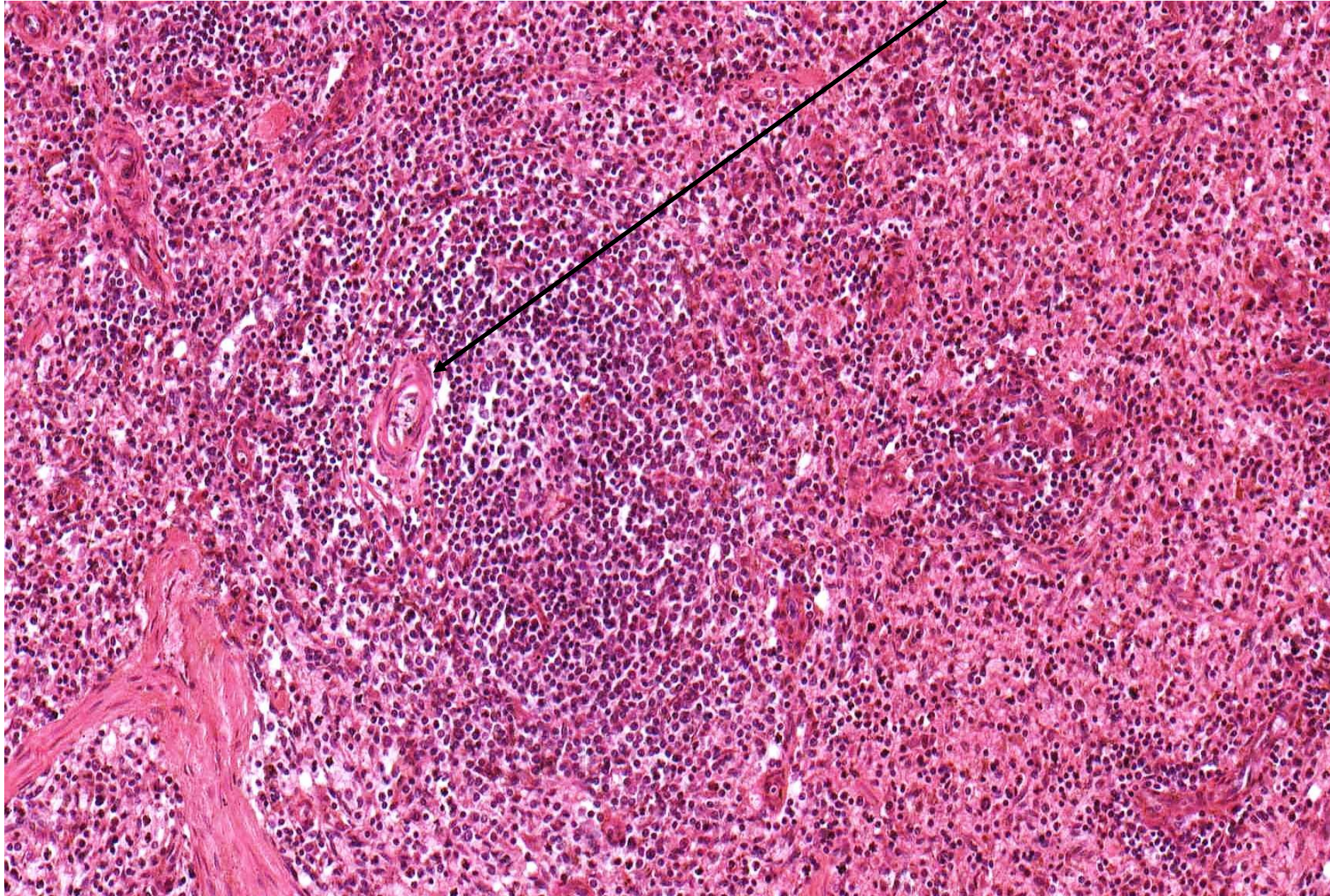
Source: Mescher AL: *Junqueira's Basic Histology: Text and Atlas, 12th Edition*: <http://www.accessmedicine.com>

Copyright © The McGraw-Hill Companies, Inc. All rights reserved.

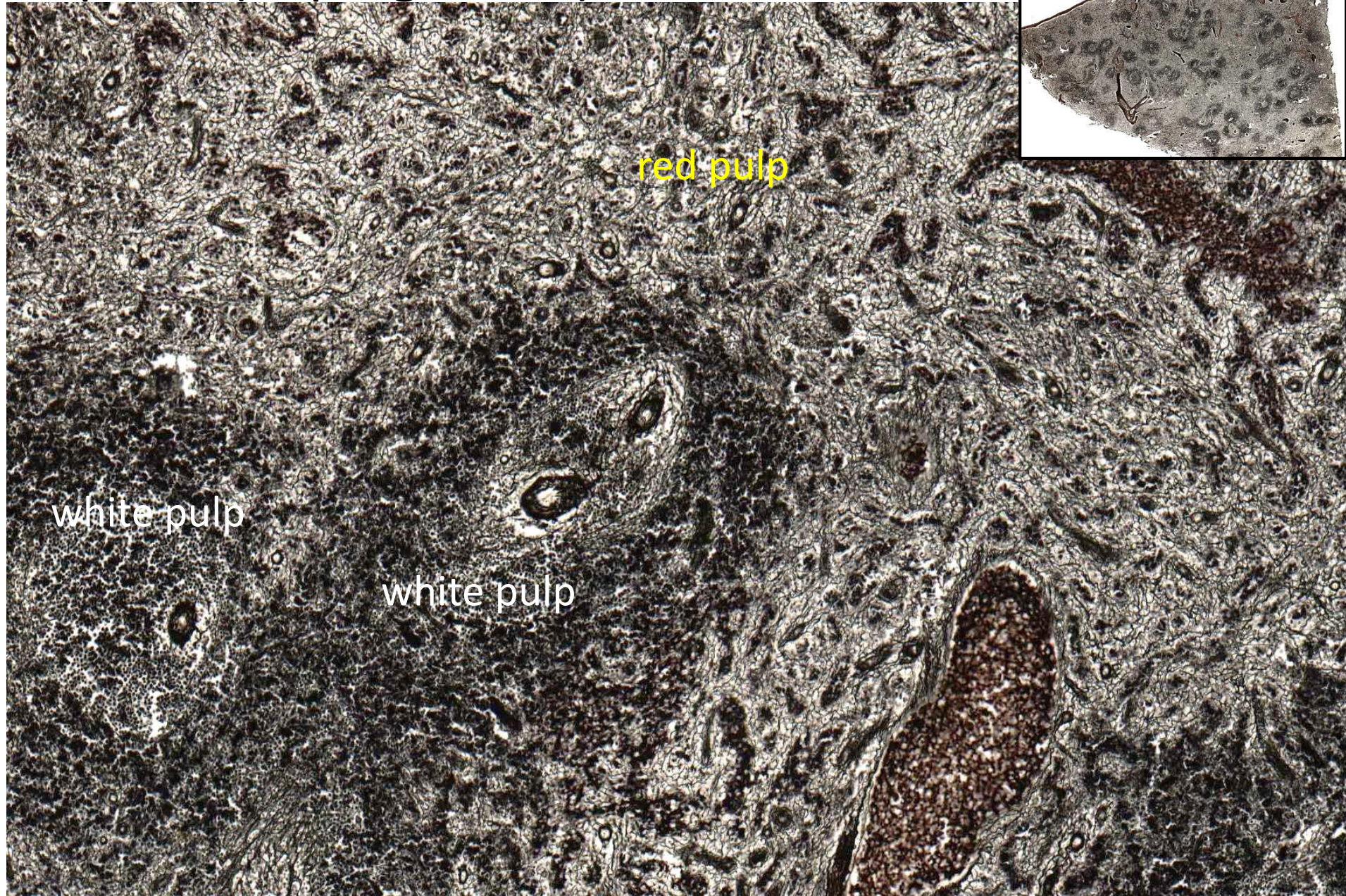
Spleen (HE) – white and red pulp, trabeculae



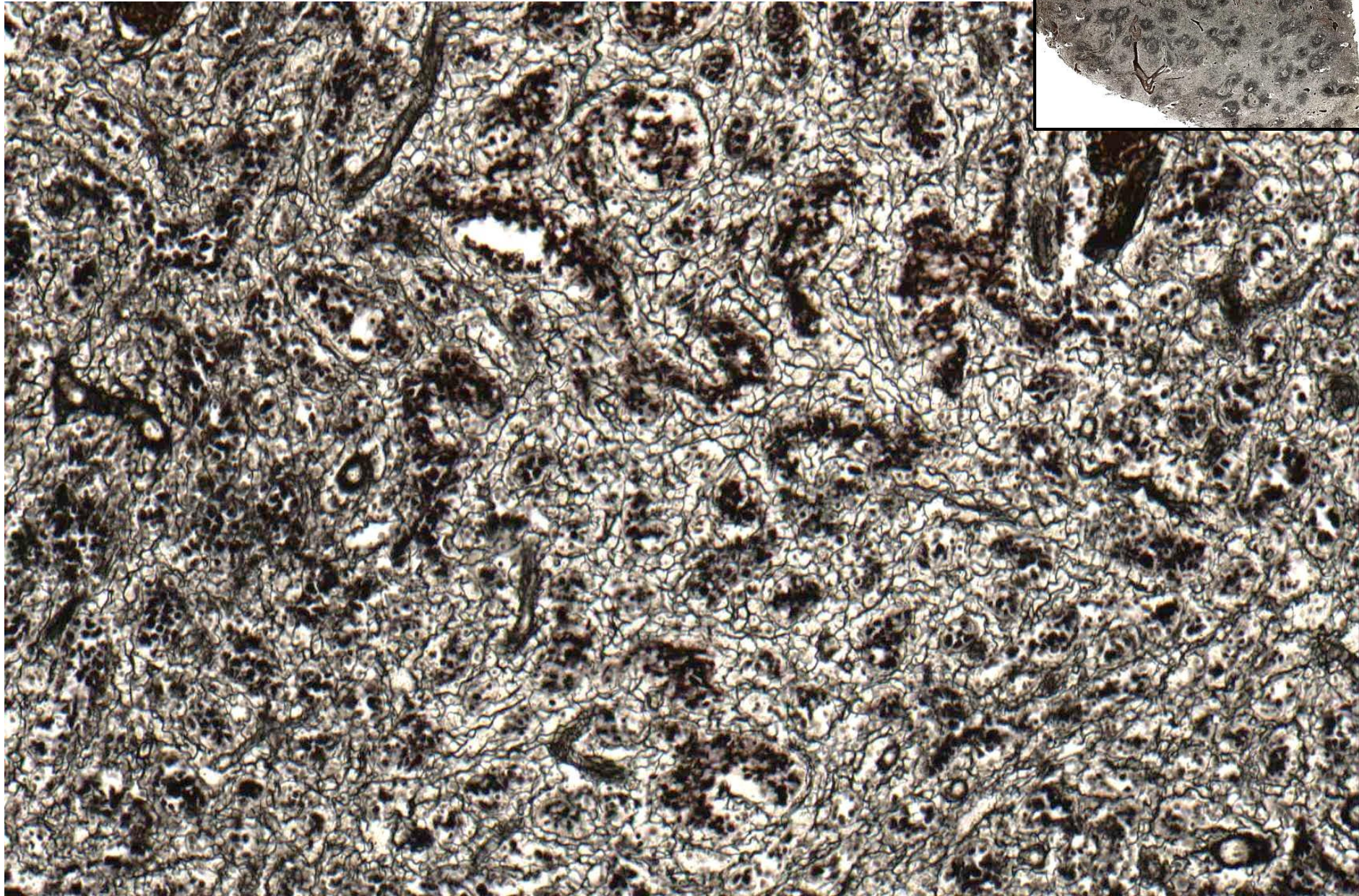
Spleen (HE) – white and red pulp, central artery



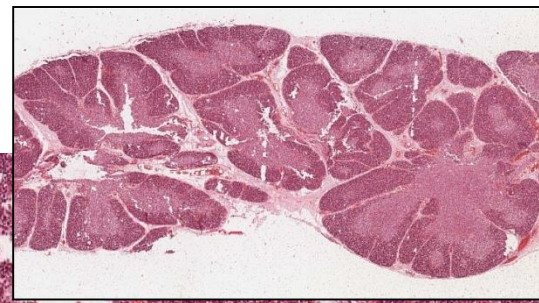
Spleen (impregnation)



Spleen (impregnation) – red pulp

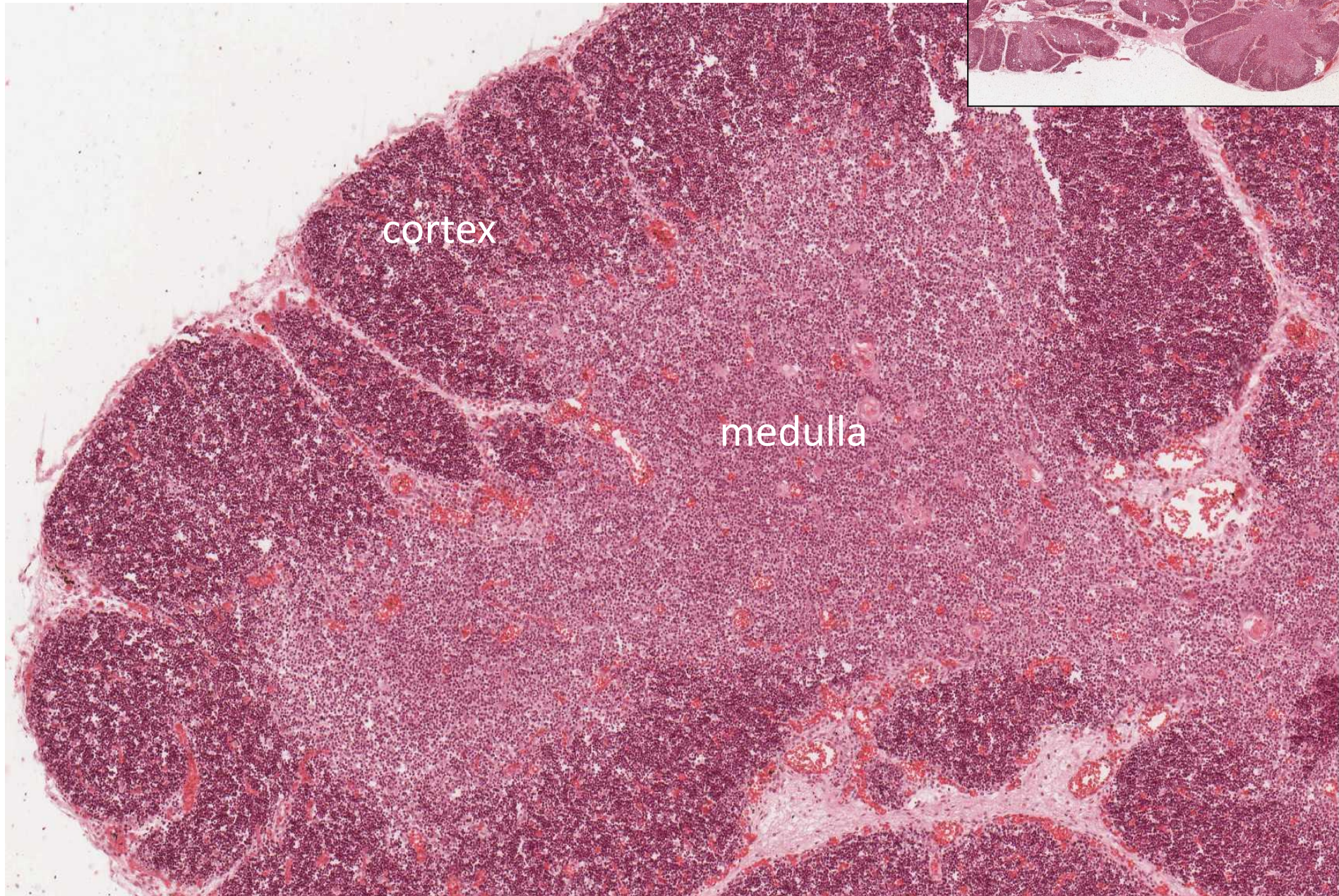


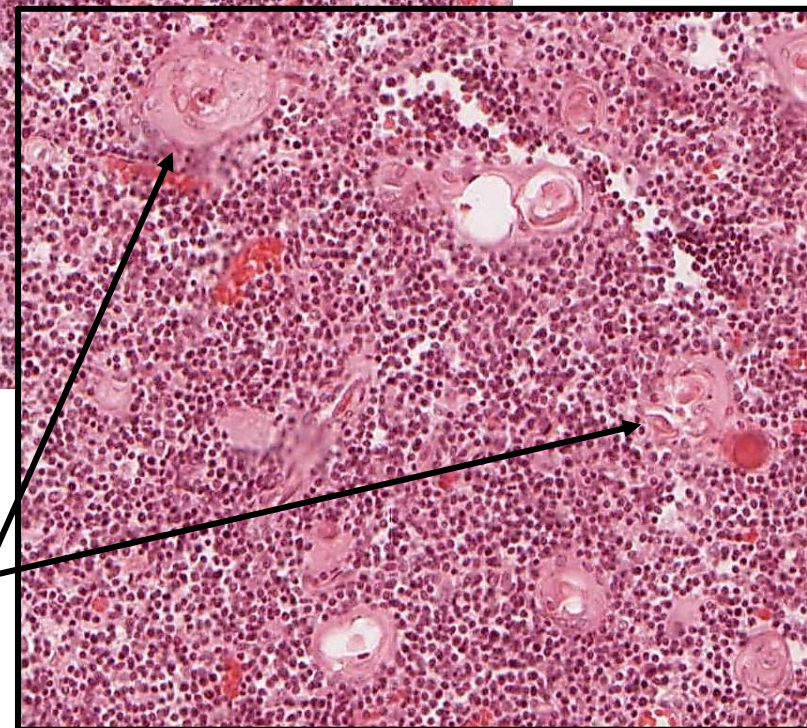
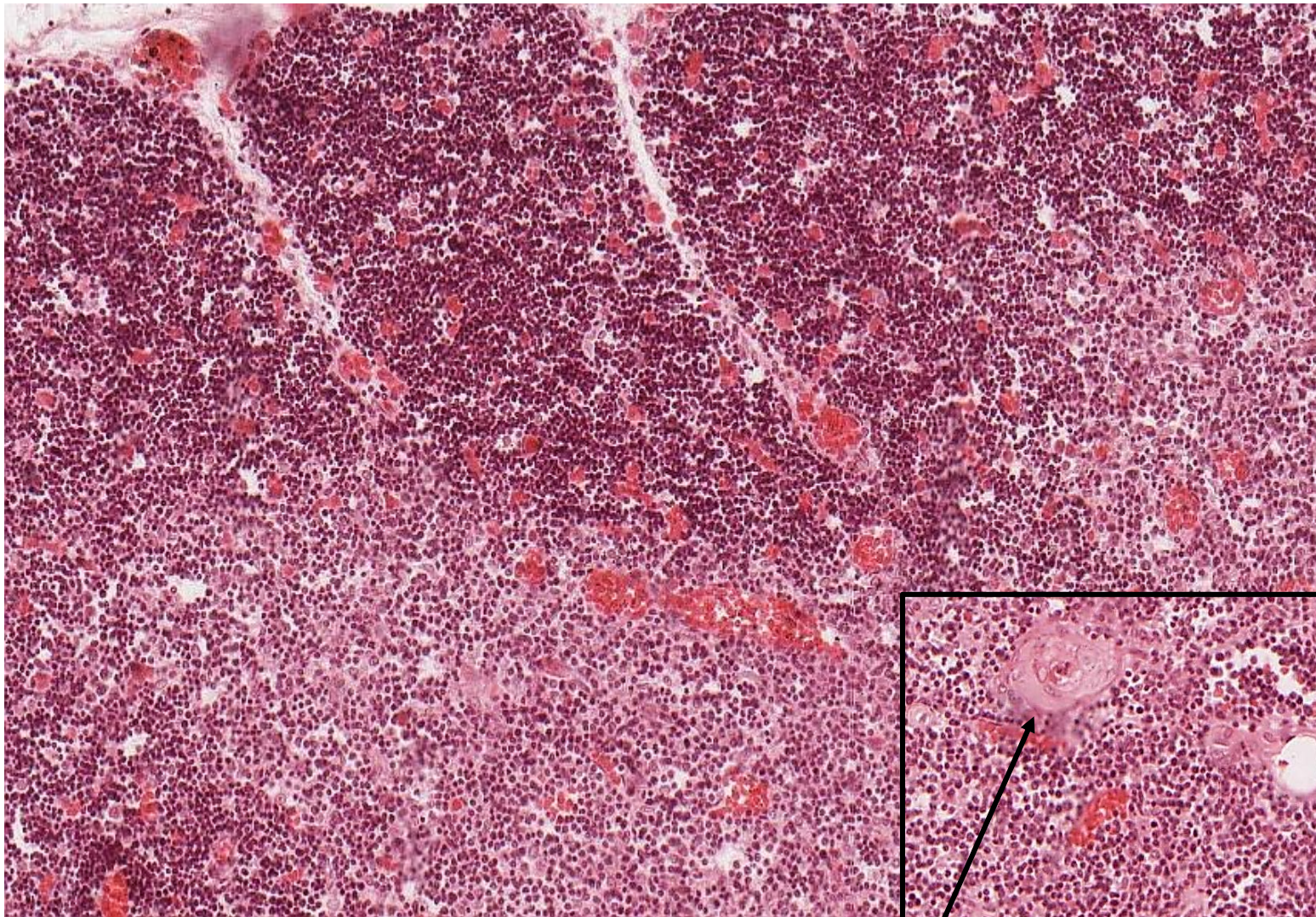
Thymus - young (HE)



cortex

medulla

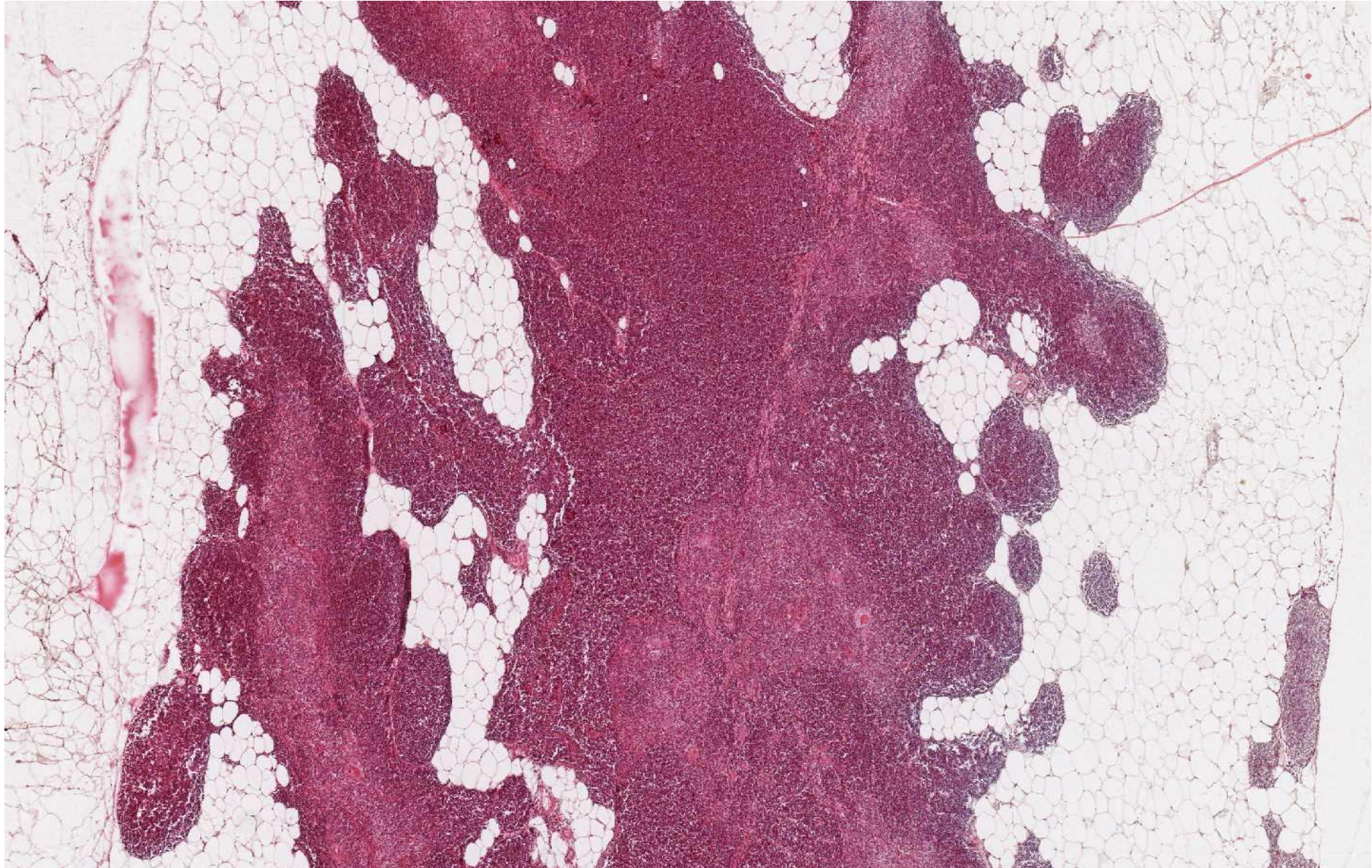




Thymus young – cortex and medulla, Hassal's corpuscles

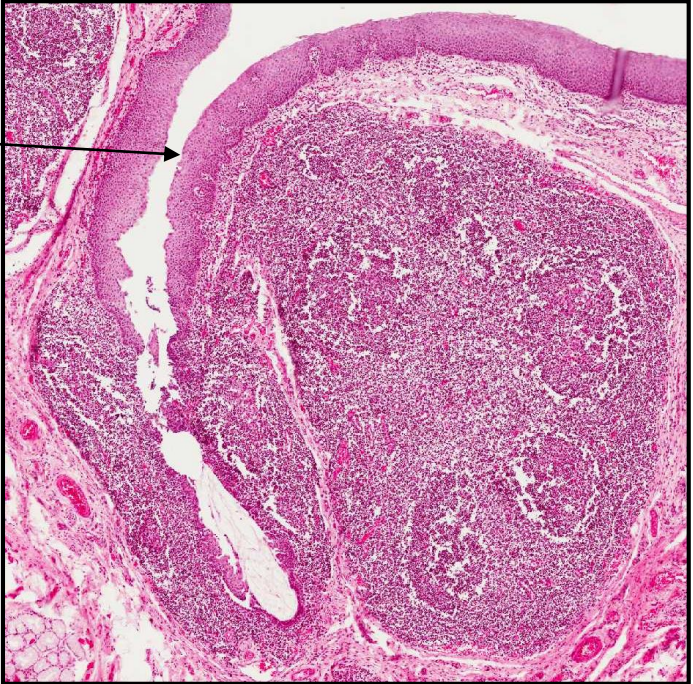
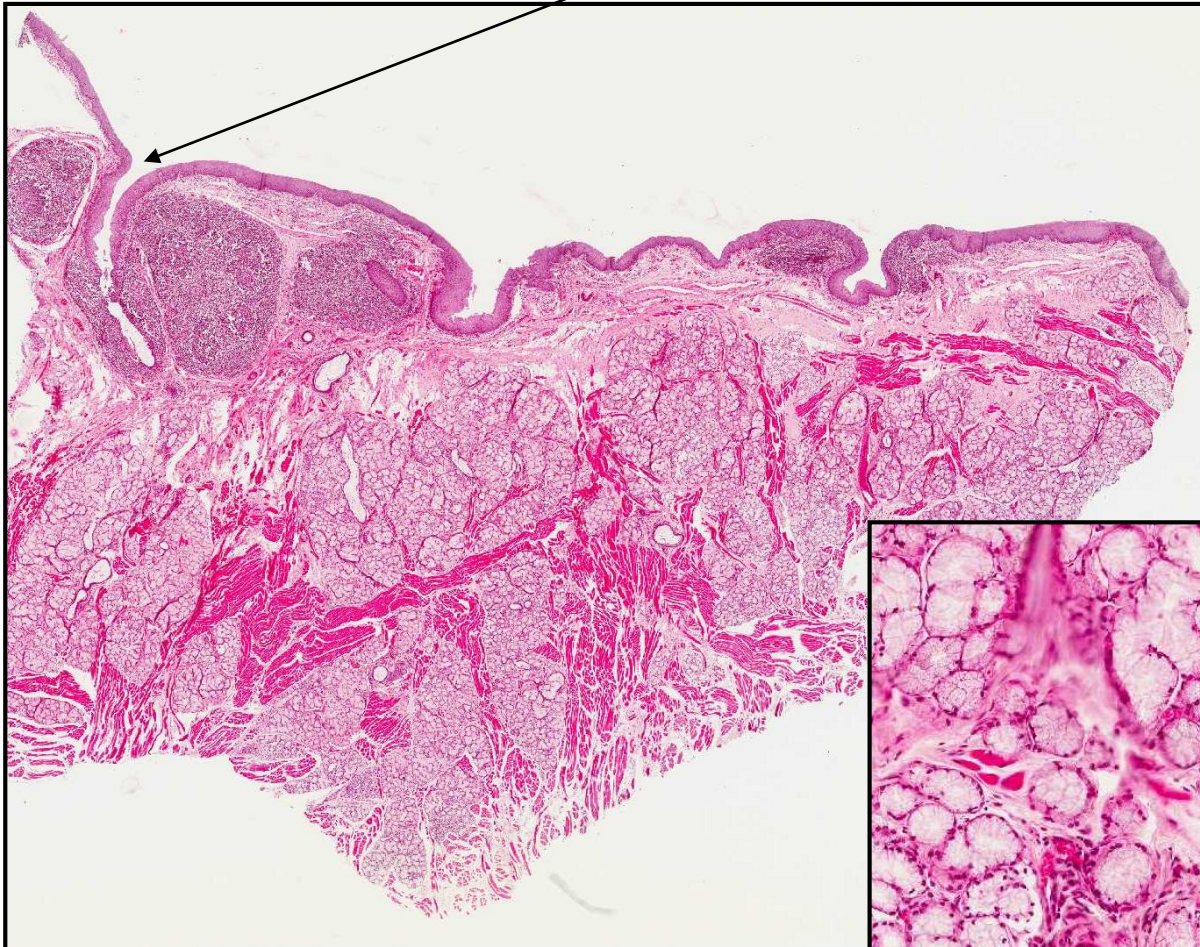
Thymus in involution

- missing cortex/medulla border
- lymph tissue replacement with CT + fat)
- Hassal's corpuscles



Lingual tonsil

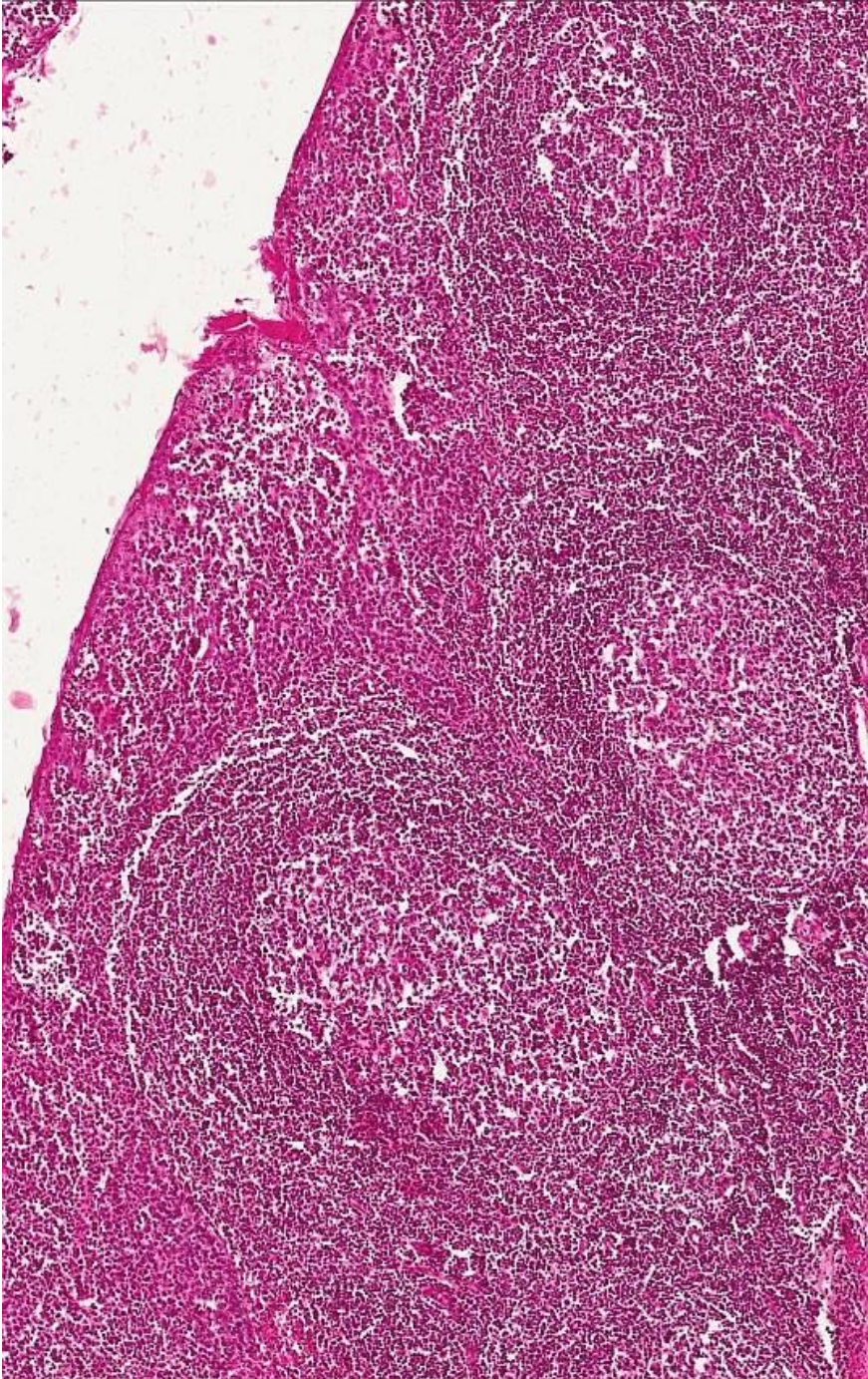
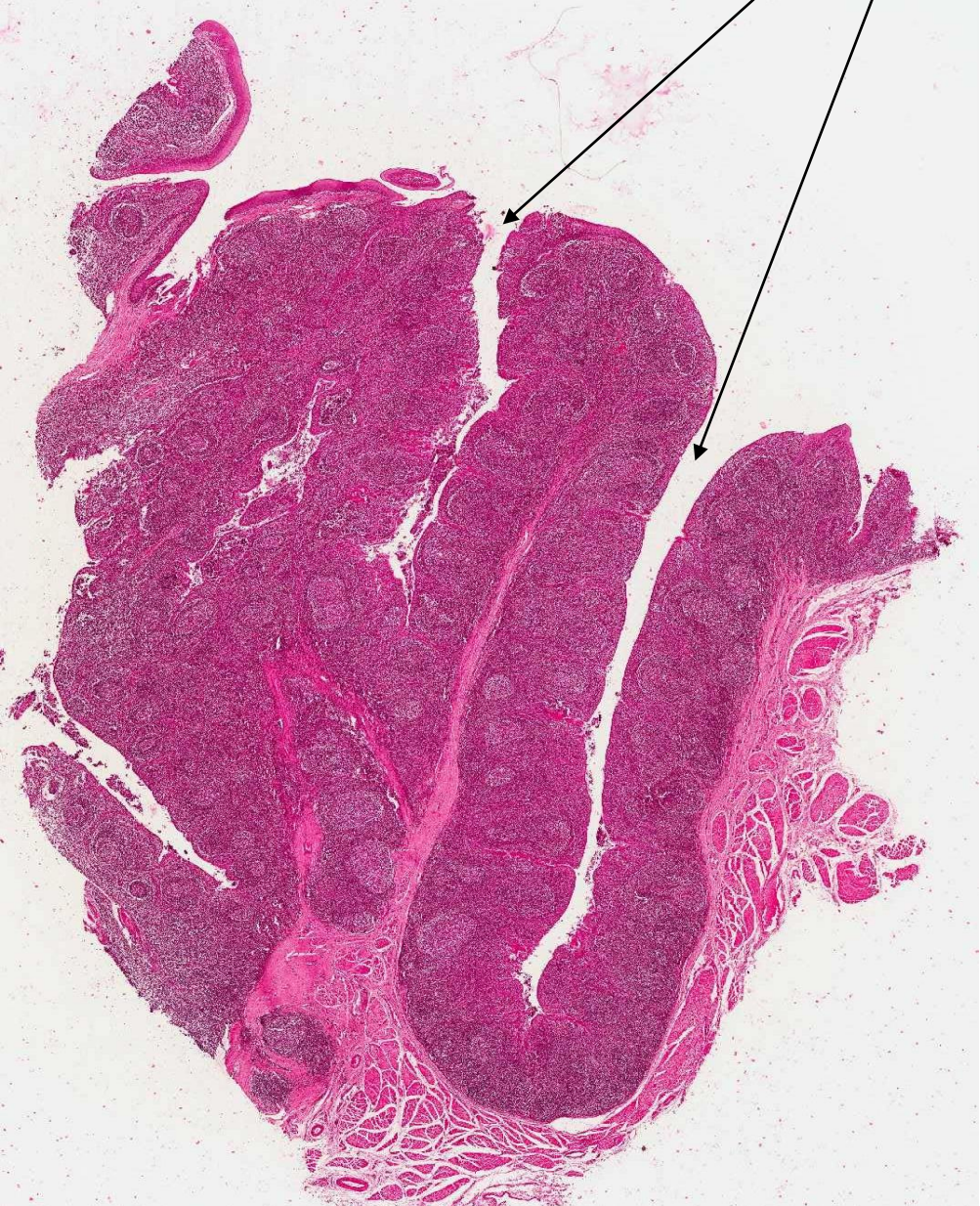
crypt



mucous glands (of Weber)

Palatine tonsil

crypts





LYMPHATIC SYSTEM

Slides

- 66. Lymphonodus (HE)
- 67. Lien (HE)
- 68. Lien (impregnation)
- 57. Thymus - young (HE)
- 58. Thymus - in involution (HE)
 - 4. Tonsilla lingualis (HE)
 - 6. Tonsilla palatina (HE)