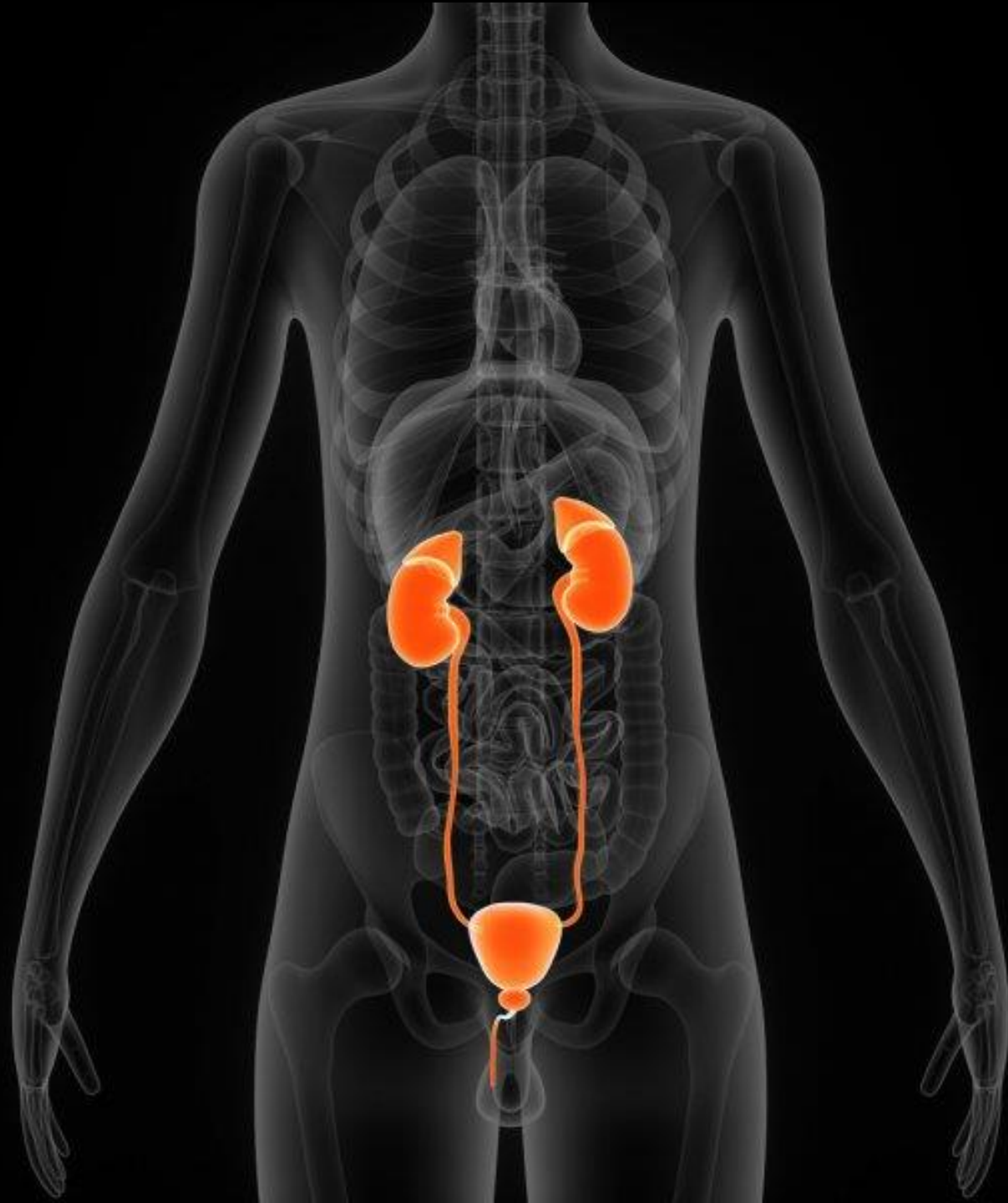


# Mužská urogenitální soustava



**Extremitas superior**

**Extremitas inferior**

**Margo medialis**

**Margo lateralis**

**Hilum renale**

**Facies anterior et posterior**

**Cortex renalis**

**Medulla renalis**

**Lobus renalis = renculus**

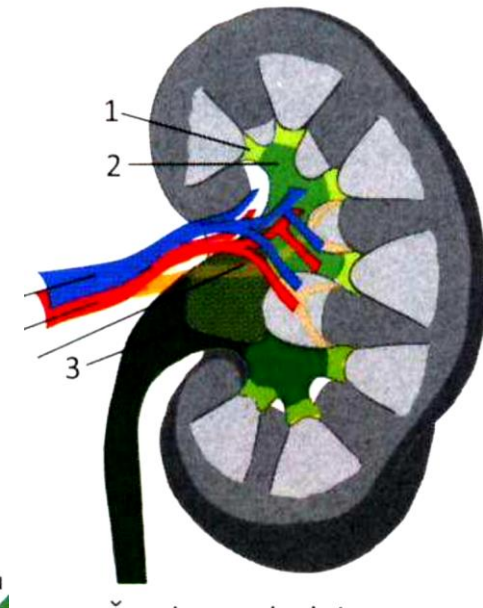
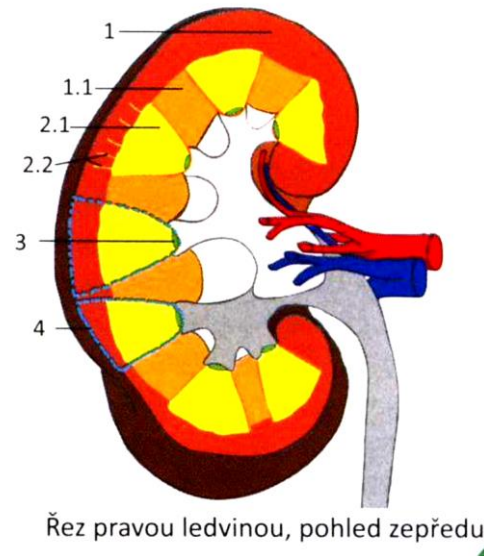
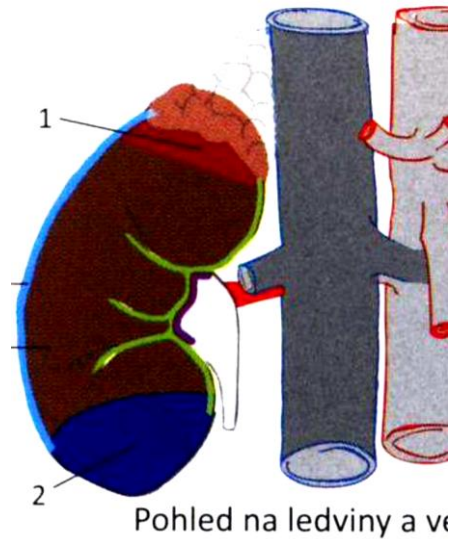
**Pelvis renalis**

**Calices majores**

**Calices minores**

**Pyramides renales**

**Papilla renalis**



## Ureter - močovod

a) **Pars abdominalis** (od pelvis renalis po linea terminalis)

b) **Pars pelvica** (od linea terminalis k močovému měchýři)

## Vesica urinaria - močový měchýř

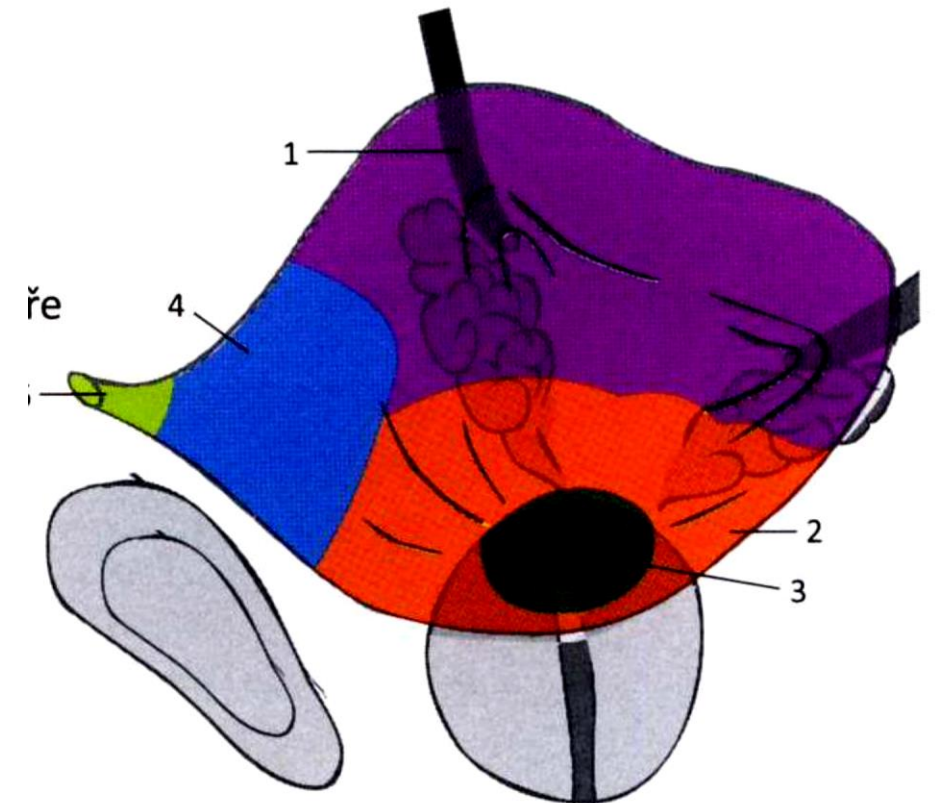
**Corpus**

**Fundus**

**Cervix**

**Apex**

**Ligamentum umbilicale medianum**



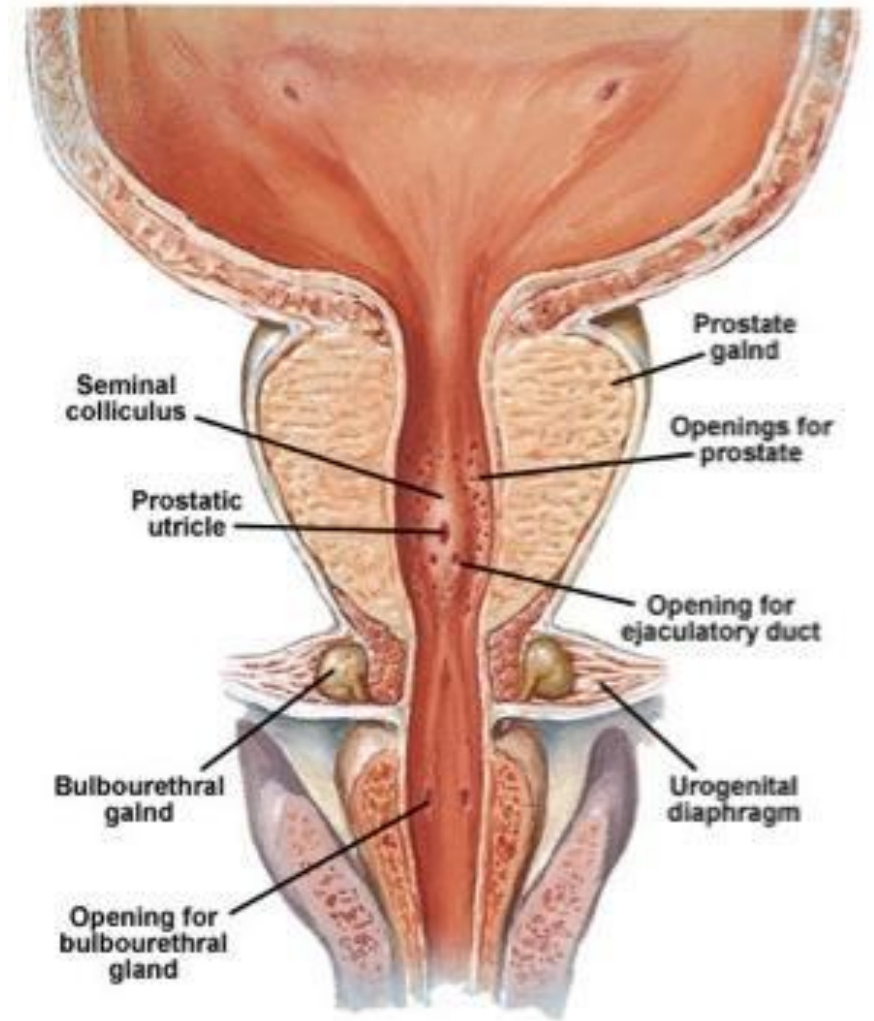
Močový měchýř, pohled šikmo shora z boku

## URETHRA MASCULINA – mužská močová trubice

Ostium urethrae internum

Colliculus seminalis

Ostium urethrae externum



## Varle

**Extremitas superior**

**Extremitas inferior**

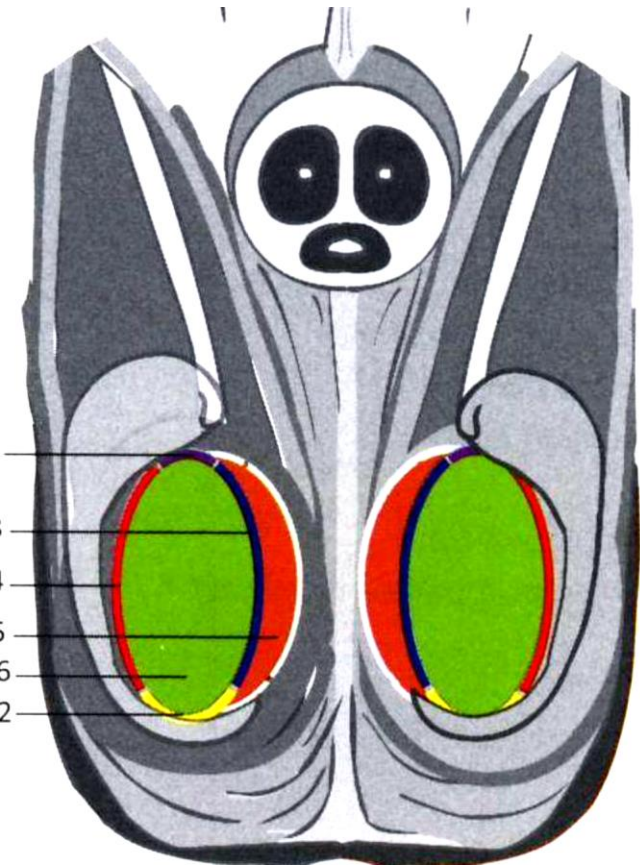
**Ligamentum scrotale**

**Margo anterior**

**Margo posterior**

**Facies medialis**

**Facies lateralis**



**Tunica albuginea**

**Septa testis**

**Lobuli testis**

**Mediastinum testis**

**Tubuli seminiferi contorti**

**Tubuli seminiferi recti**

**Rete testis**

**Ductuli efferentes testis**

**Ductus epididymidis**

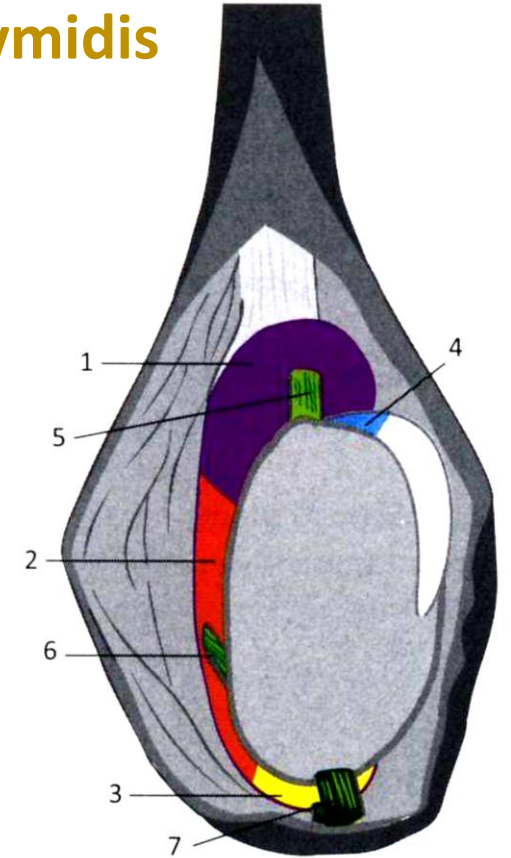
**Ductus deferens**

## Nadvarle

**Caput epididymidis**

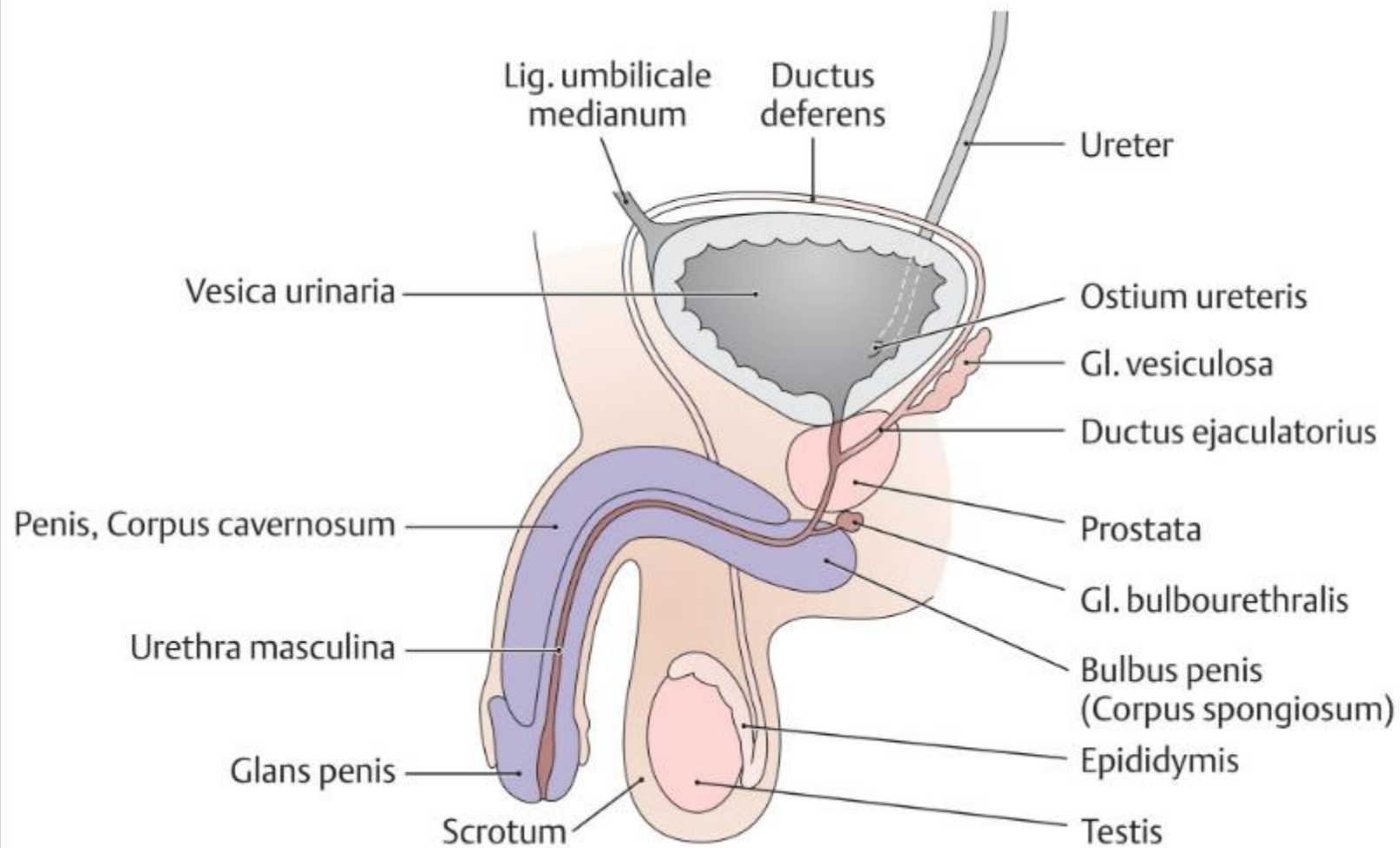
**Corpus epididymidis**

**Cauda epididymidis**



Pohled zepředu do otevřeného šourku

# PŘÍDATNÉ POHLAVNÍ ŽLÁZY



**PROSTATA**  
**Basis – MM.**  
**Apex**  
**VESICULA SEMINALIS**  
**GLL. BULBOURETHRALIS**

**Radix penis**

**Crura penis**

**Bulbus penis**

**Corpus penis** – facies dorsalis, facies urethralis

**Glans penis**

**Corona glandis**

**Collum glandis**

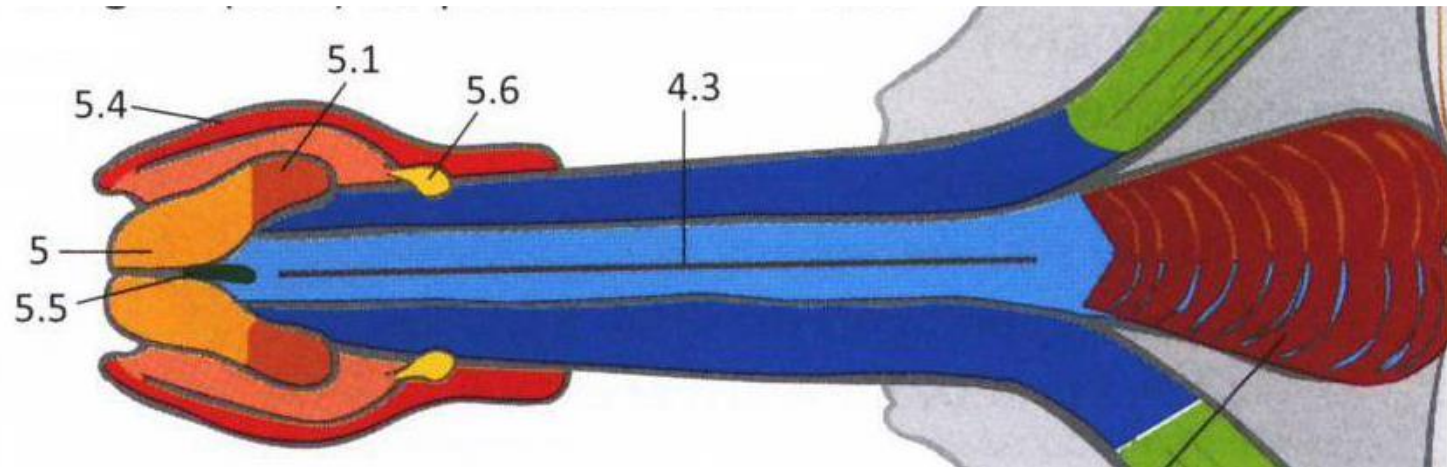
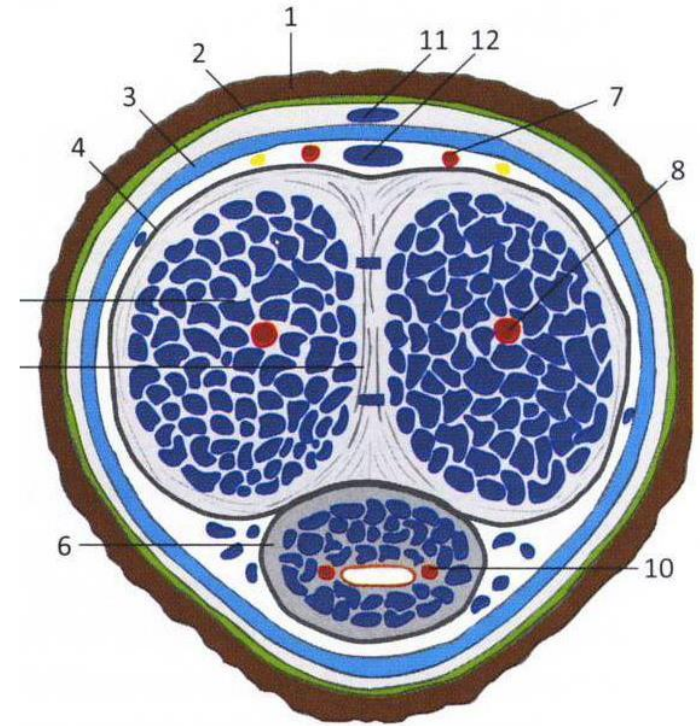
**Ostium urethrae externum**

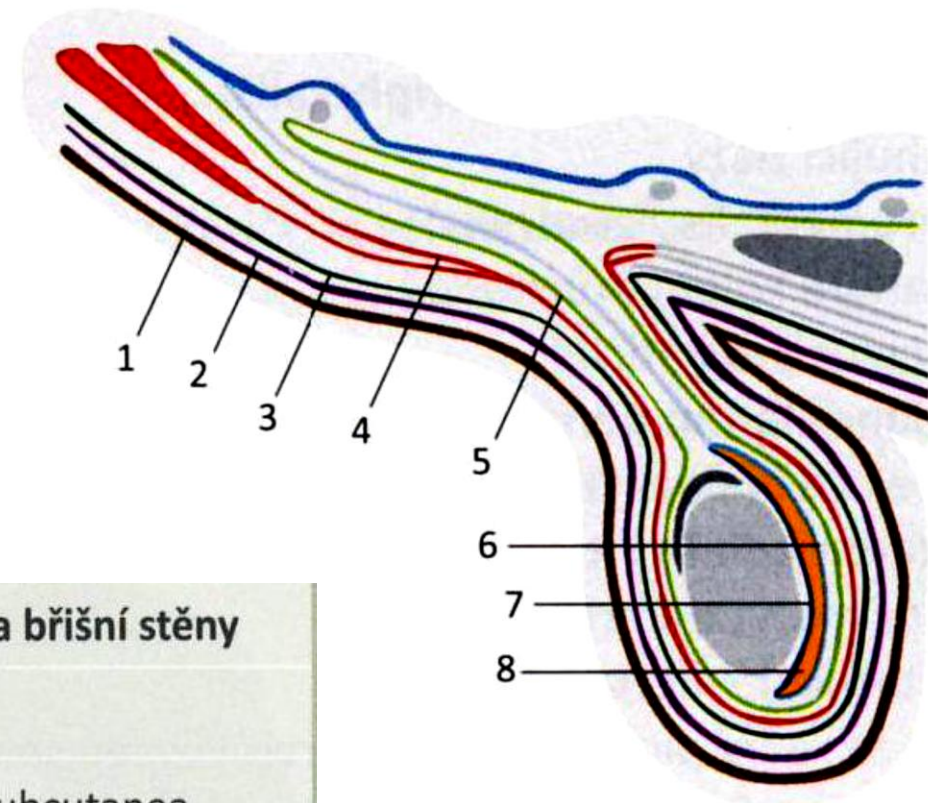
**Preputium**

**Frenulum preputii**

**Corpora cavernosa**

**Corpus spongiosum**





Vrstva šourku	Odpovídající vrstva břišní stěny
● 1 Kůže	Kůže
● 2 Tunica dartos	Fascia abdominis subcutanea
● 3 Fascia spermatica externa	Fascia abdominis superficialis
● 4 Musculus cremaster a fascia cremasterica	M. obliquus internus abdominis M. transversus abdominis
● 5 Fascia spermatica interna	Fascia transversalis
● 6 Lamina parietalis tunicae vaginalis testis (periorchium)	Peritoneum parietale
● 7 Lamina visceralis tunicae vaginalis testis (epiorchium)	Peritoneum viscerale



# Použitá literatura:

Čihák R: Anatomie 2 (Splanchnologia). Avicenum, zdravotnické nakladatelství, Praha, 1988.

Netter F. H.: Interactive Atlas of Clinical Anatomy. Illinois, 1997

Atlas der Anatomie des Menschen/Sobotta.

HUDÁK, Rádovan a David KACHLÍK. *Memorix anatomie*.