

Frontal area

Restorative dentistry III. 5

Lenka Roubalikova

lroubal@med.muni.cz

607122064

Remember!

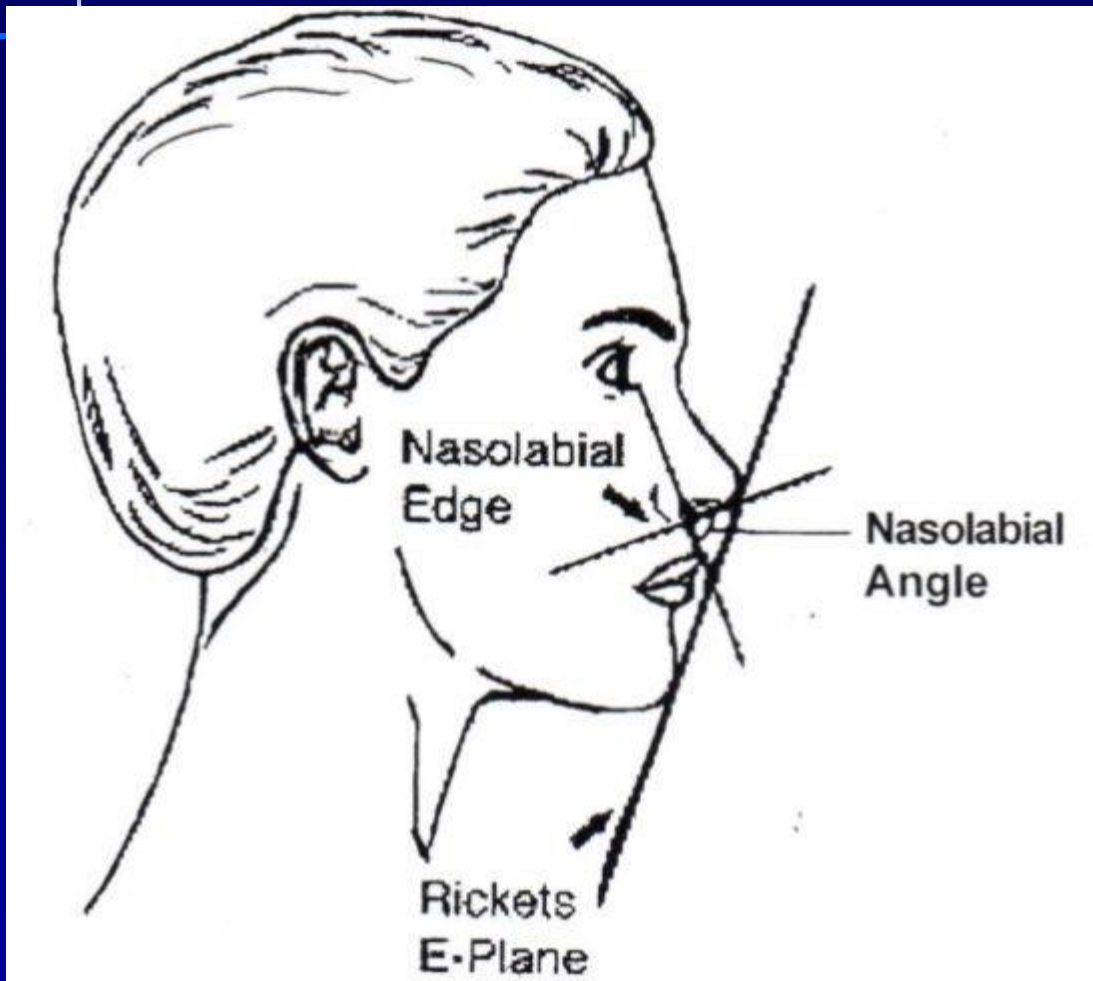
Dentofacial harmony

- Imaginary lines – structures must have harmonious in relation to them
- Teeth are in harmony with the face, they can attract our attention and distract it from other structures

Horizontal
a vertical lines
axis



Profile:



Balance of lip, nose
and chin.

Nasolabial angle:
90° – 95 °men
100° - 106° women

Ricketts line:
4 mm before upper
2 mm before lower lip

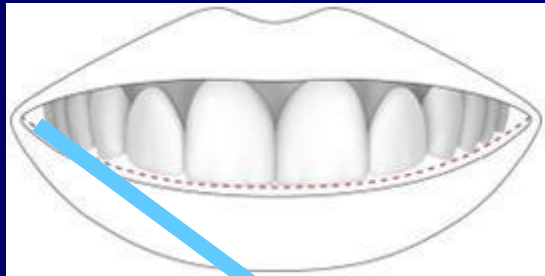
Dentofacial harmony

- Imaginary lines – structures must have harmonious relation to them
- Teeth are in harmony with the face, they can attract our attention and distract it from other structures

Line of smile

- Connects incisal edges of upper frontal teeth and touches cusps of upper molars. Lower border is lower lip. Line of lower lip is parallel to line of smile.
- Upper central incisors should be in touch with wet part of upper lip.

Line of smile



Bilateral negative space



Normal



Enlarged

Horizontal
a vertical lines
axis



Harmony of the teeth and gingiva

Notice the gingival border in relation to the upper lip





Gummy smile



Remember !

- Check always red and white aesthetics!





Remember!

- Interdisciplinary cooperation:
 - Periodontology
 - Orthodontics
 - Prosthetics

Always take in account

- Patient's requirement
- Possibilities and limits of direct and indirect restorations
- Periodontal considerations
- Orthodontic considerations
- Prosthetic considerations

Direct anterior restorations

- Class III.
- Class IV.
- Class V.
- Correction of orthodontic anomalies

Reading of the colour: natural light

- Cervical area: dentin shade
(enamel is thin, dentin core can be easily seen)

By some authors – choice of dentin shade on canines (big dentine core)



Enamel shade

- Around the defect, contralateral tooth, age



Mammelons and opalescents

Characterizations



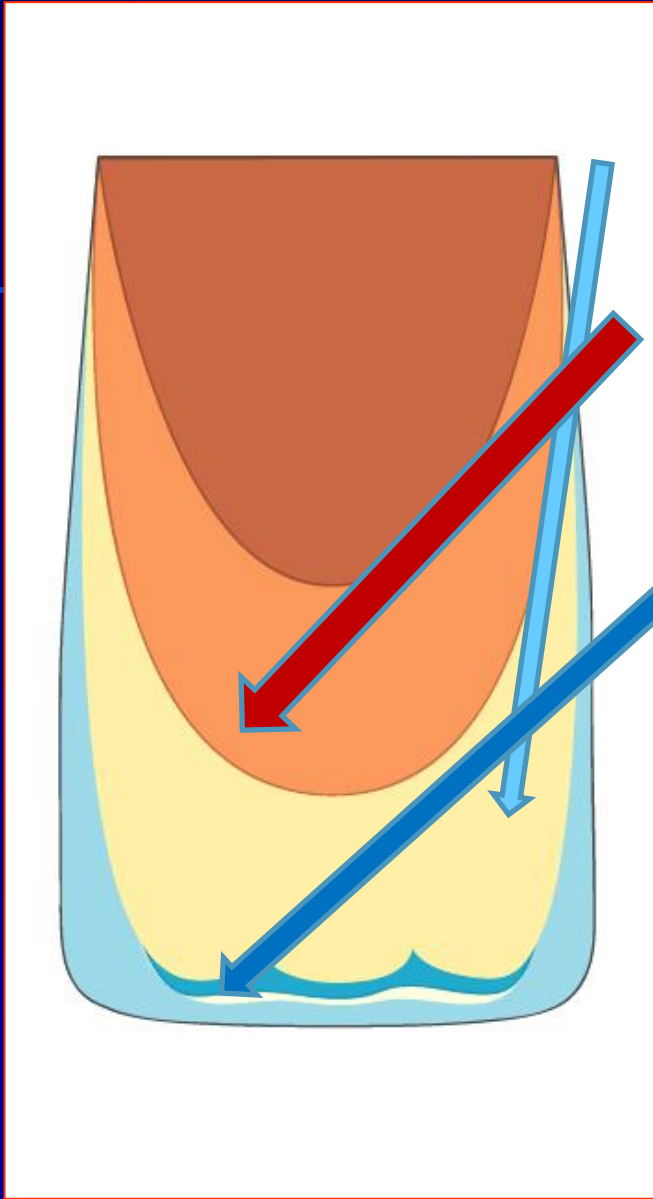
CHROMATICITY

INTENSIVES

OPALESCENTS

VALUE

CHARACTERIZATIONS



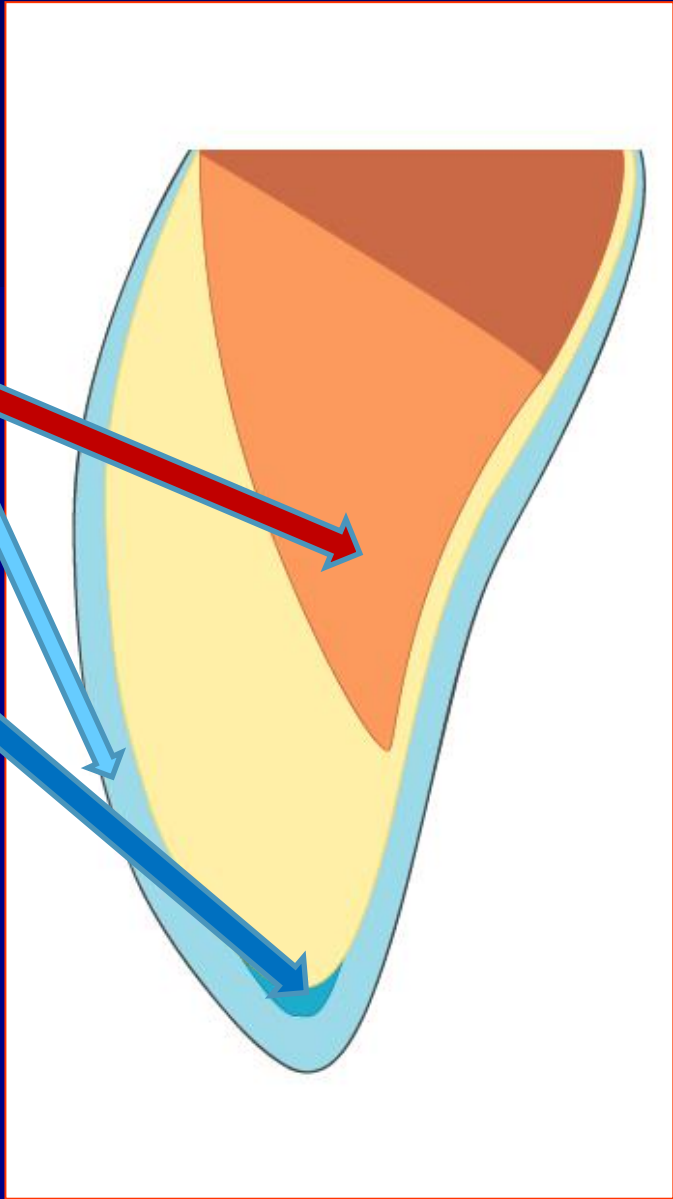
Enamel

Dentin

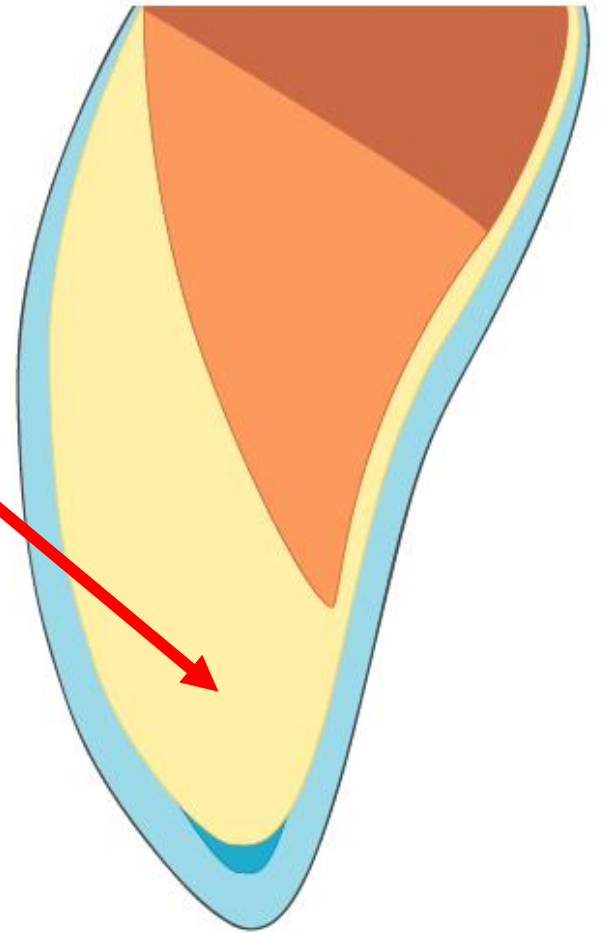
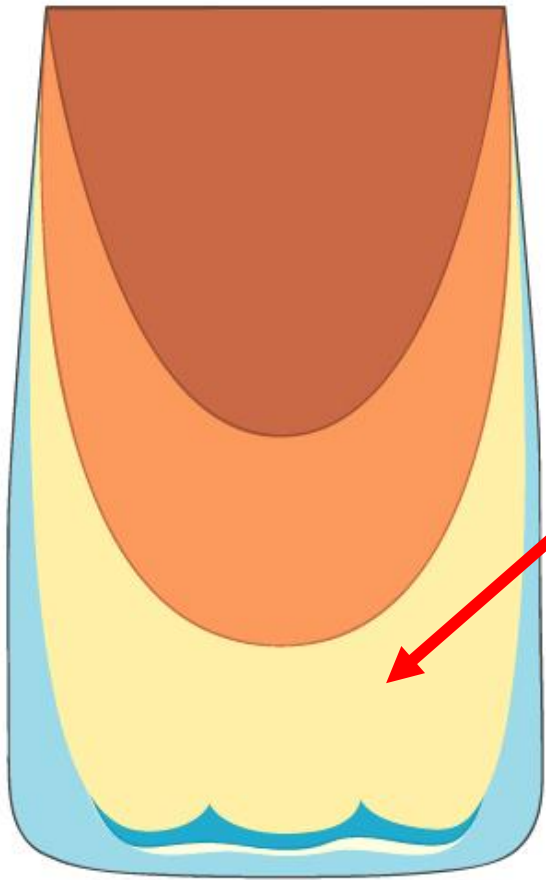
Mamelons

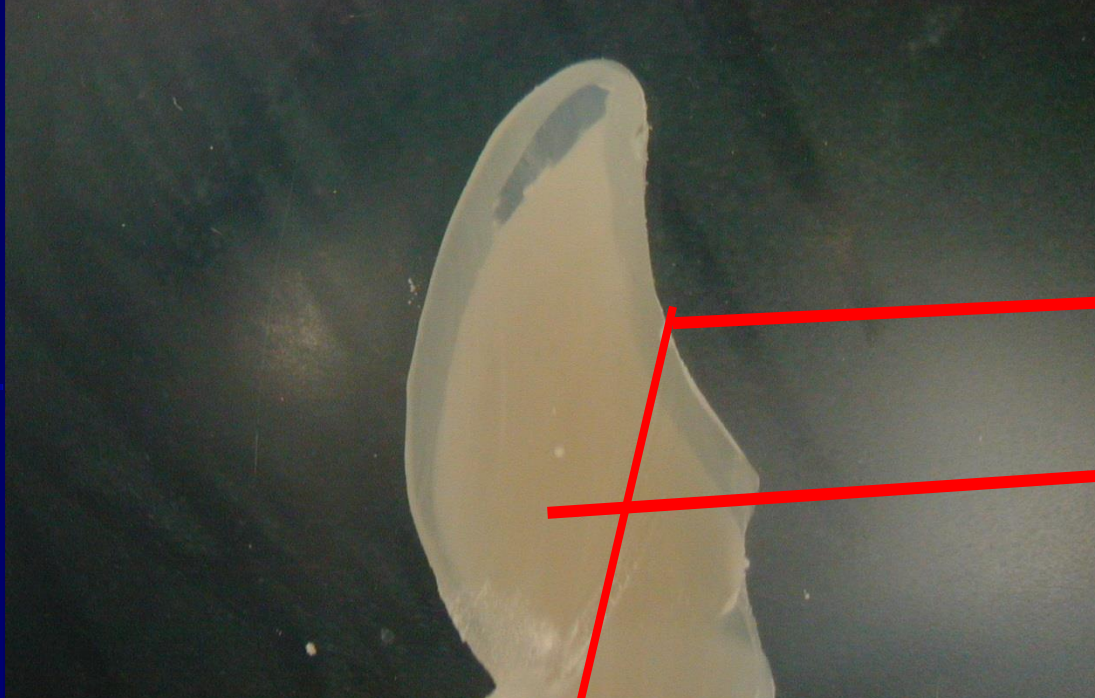
Opalescents

Characterizations



Desaturation





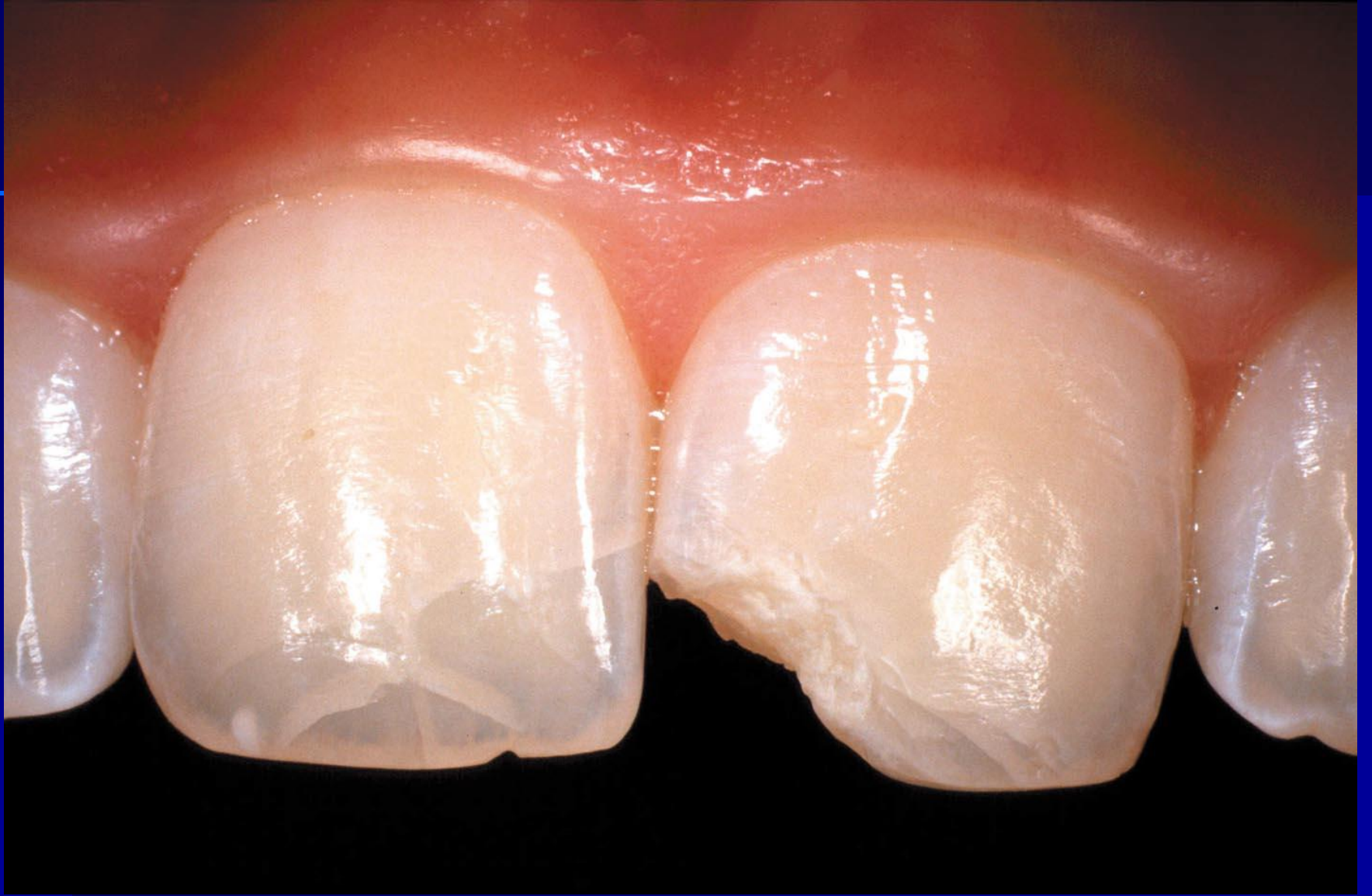
Enamel shade

Dentin shade

Desaturation
(loosing of the hue -
saturation)

Opalescence







Preparation

- Diamonds – standard, fine, finishing with a soft rubber
- Removal of aprismatic enamel – mostly yes, in rare cases is not necessary (e.g. diastema closure)





Adhesive procedures

- Acid etching preferable
 - Large field of enamel! Good connection.

Layering of composites

- Incremental technique no bulk fill composites!
- Flowables for good adaptation in some cases.
- Work with dentin, enamel and special cases
- Last layer covered with glycerine gel

Finishing and polishing

- Various concepts

- Finishing:

Extrafine diamonds (yellow)

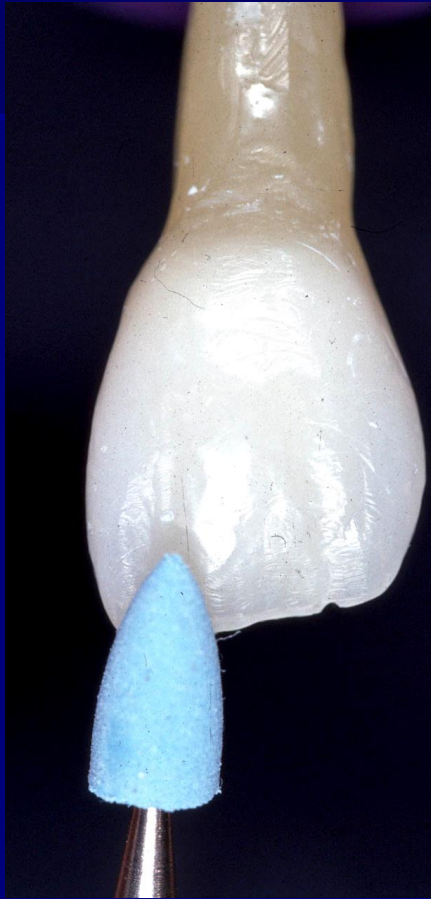
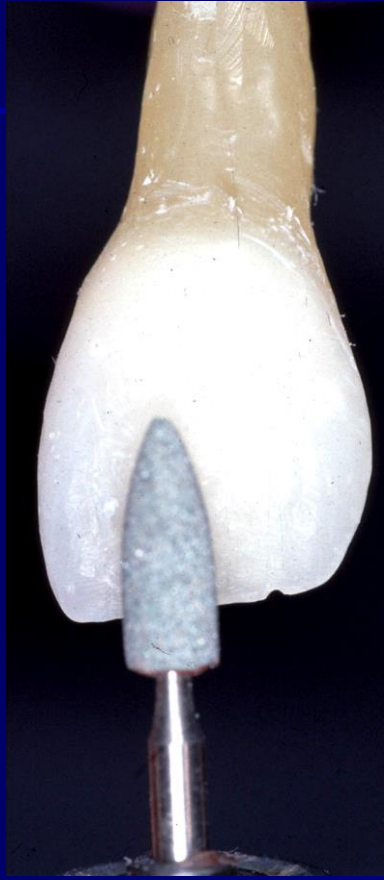
Rubber rotary instruments (prepolishing)

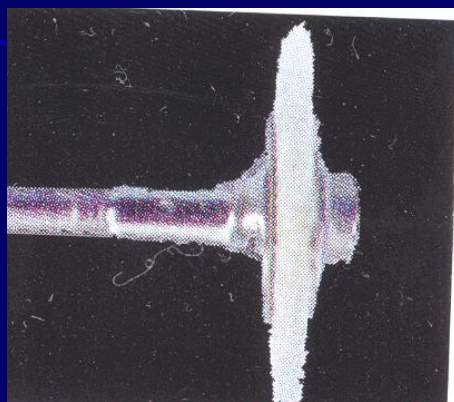
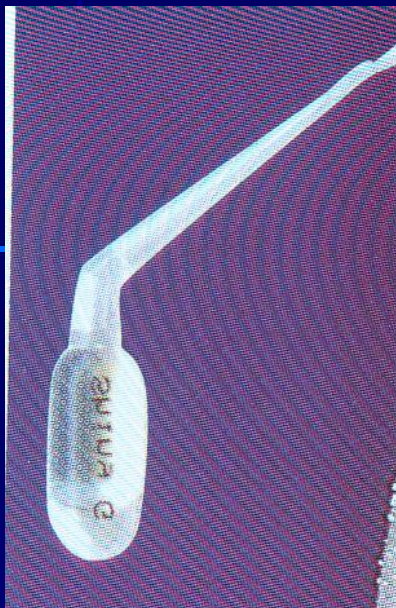
Flexible discs (for „opening“ proximal surfaces – overcome between proximal and vestibular surface, optical width.

Finishing and polishing

- Polishing with special brushes made of natural material in combination with diamond pastes – 3-5 μ m first, 1 μ m after.
- Polishing with special rotary instrument made of felt



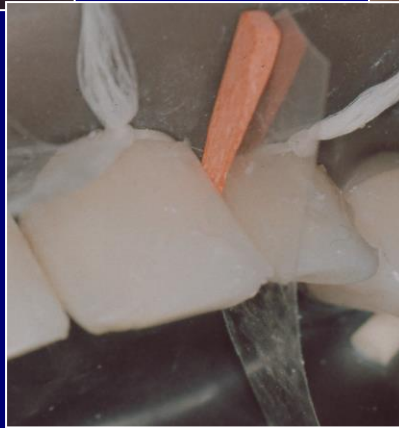


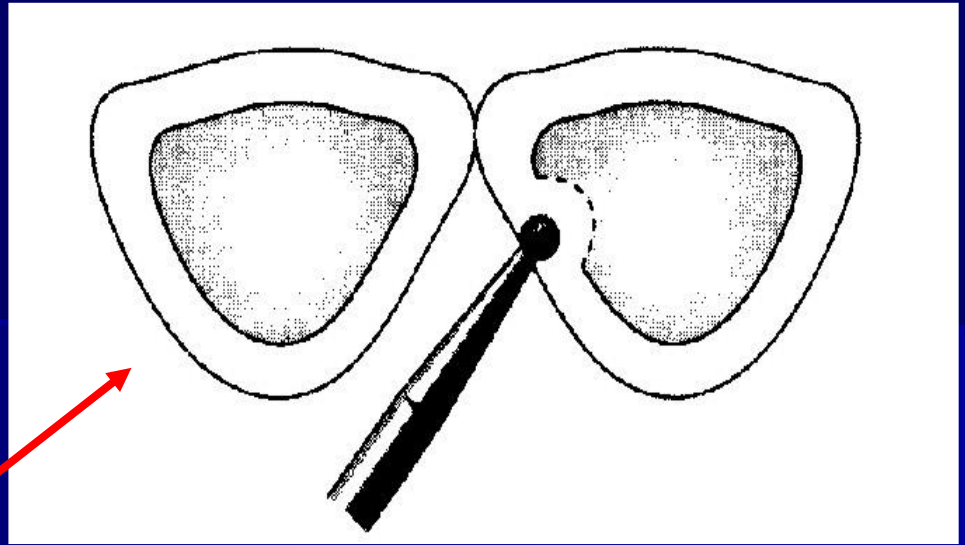






Third class



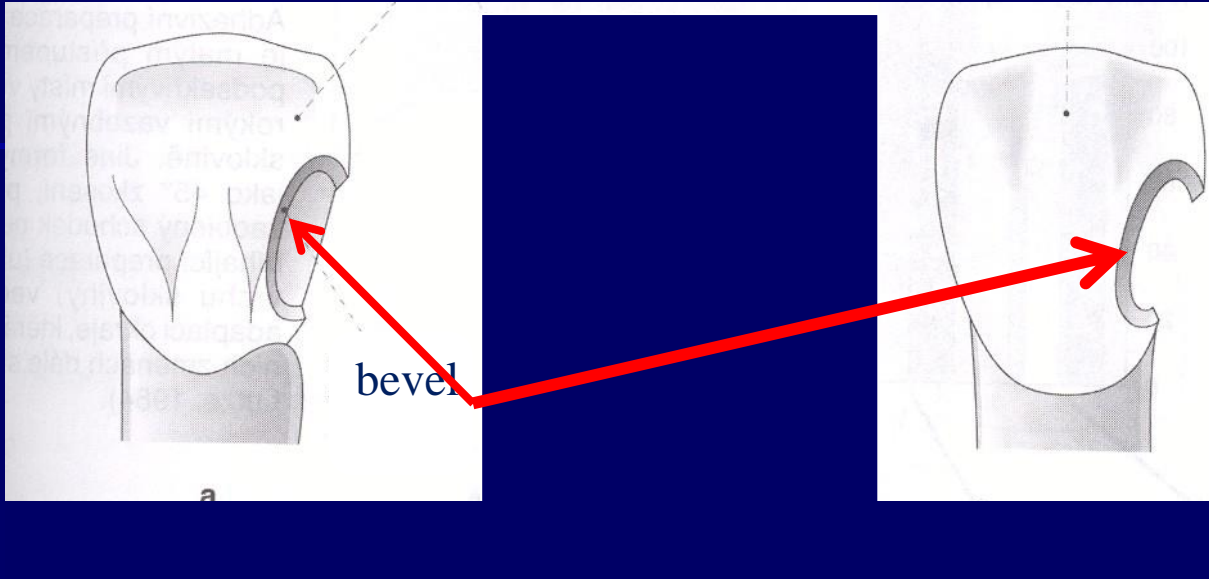


Access:

From the oral side

From the vestibular side



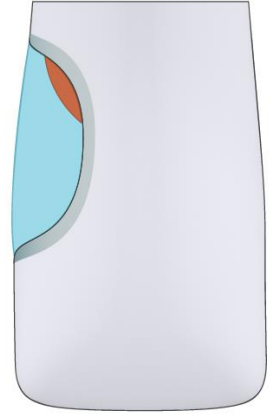
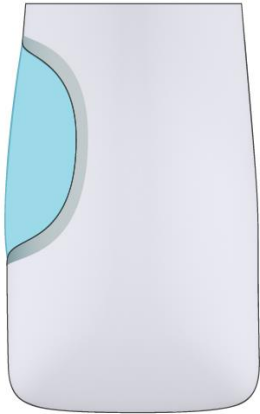


Exposure of prismatic structure

Good marginal adaptation



Layering of composite materials



Cleaning of tooth



Preparation of cavity



Acid etching



Matrix – transparent strip, wooden wedge, bonding



Layering



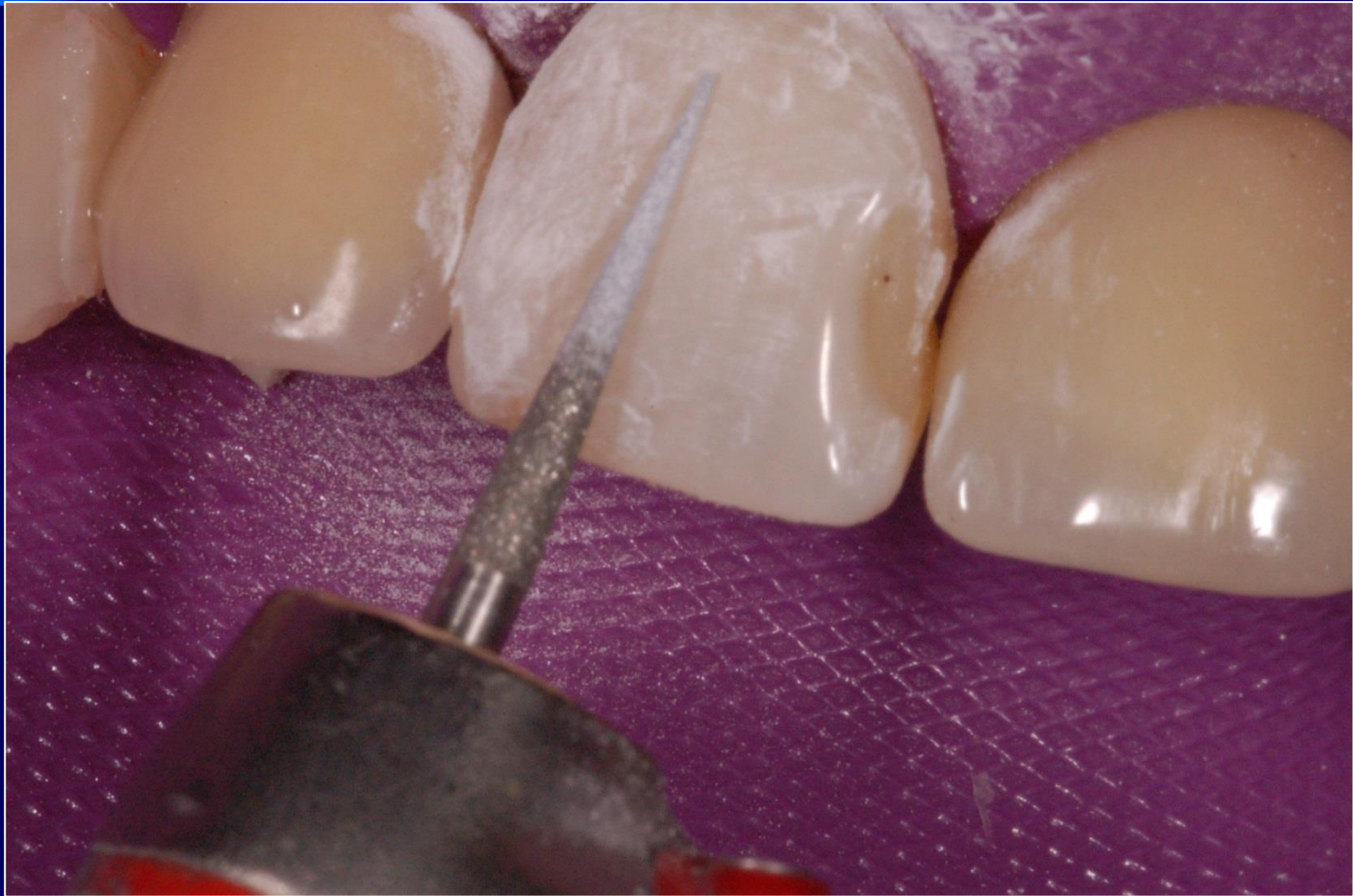
Layering, polymerization



Removal of matrix



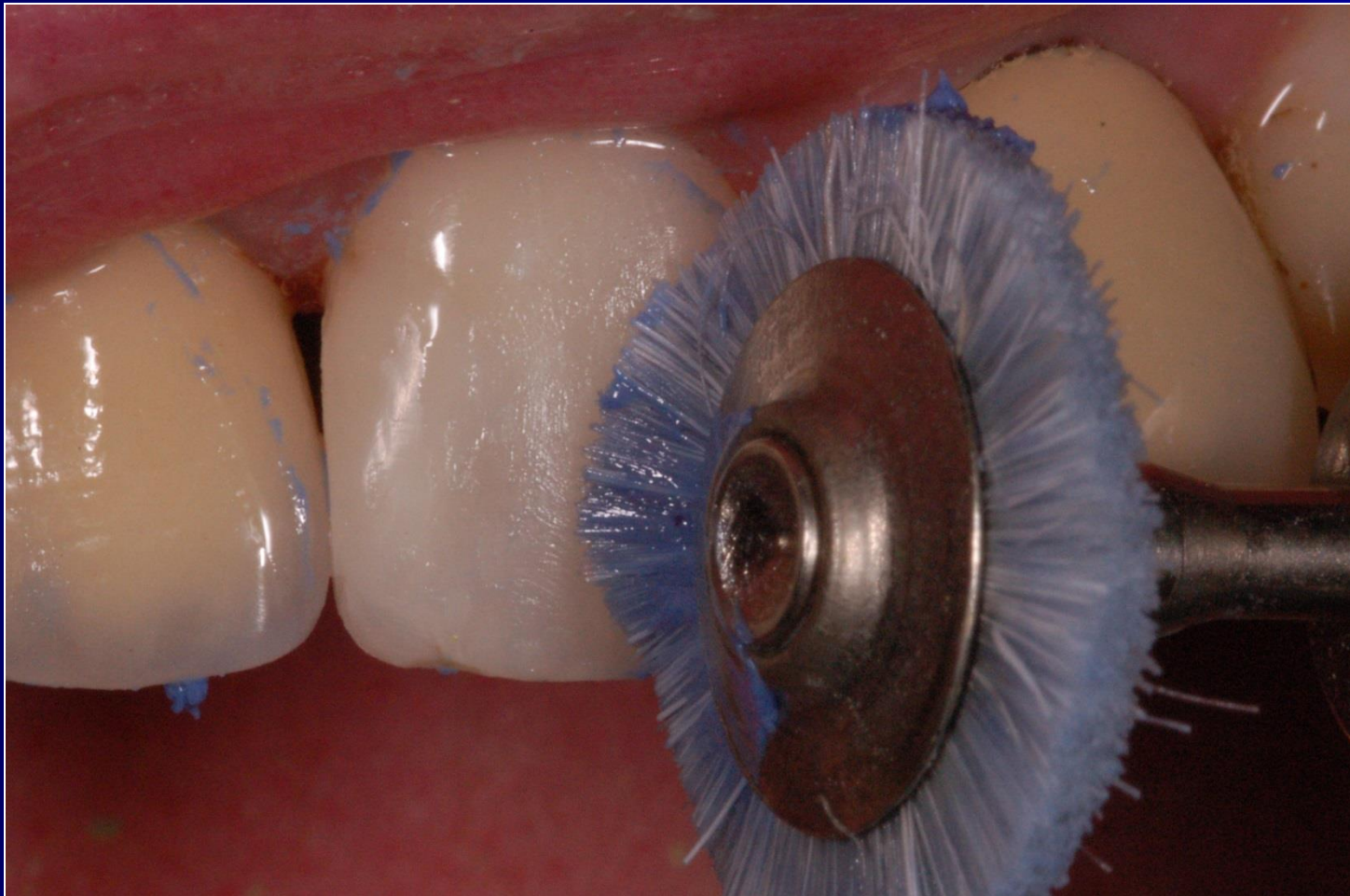
Finishing



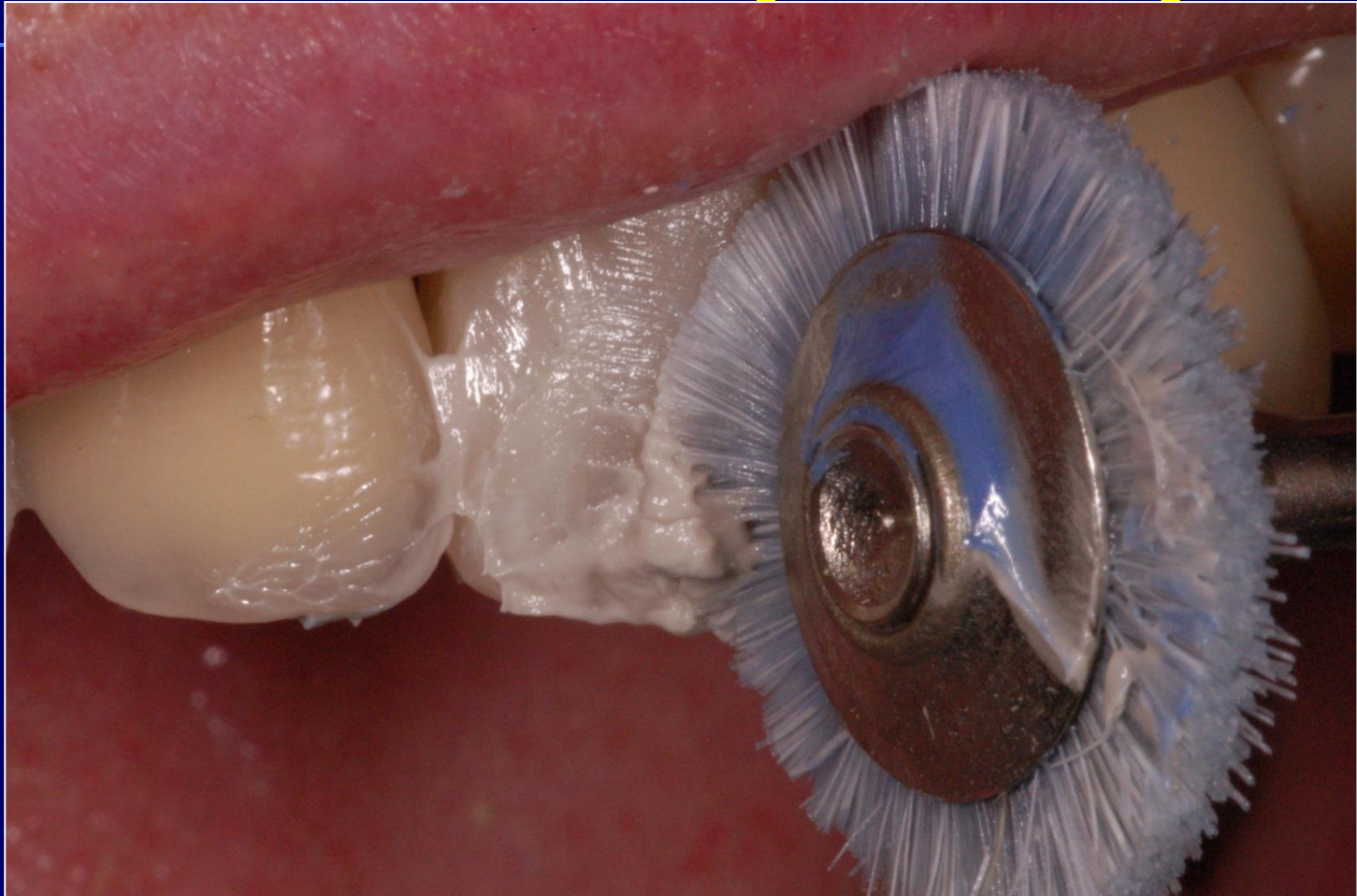
Prepolishing



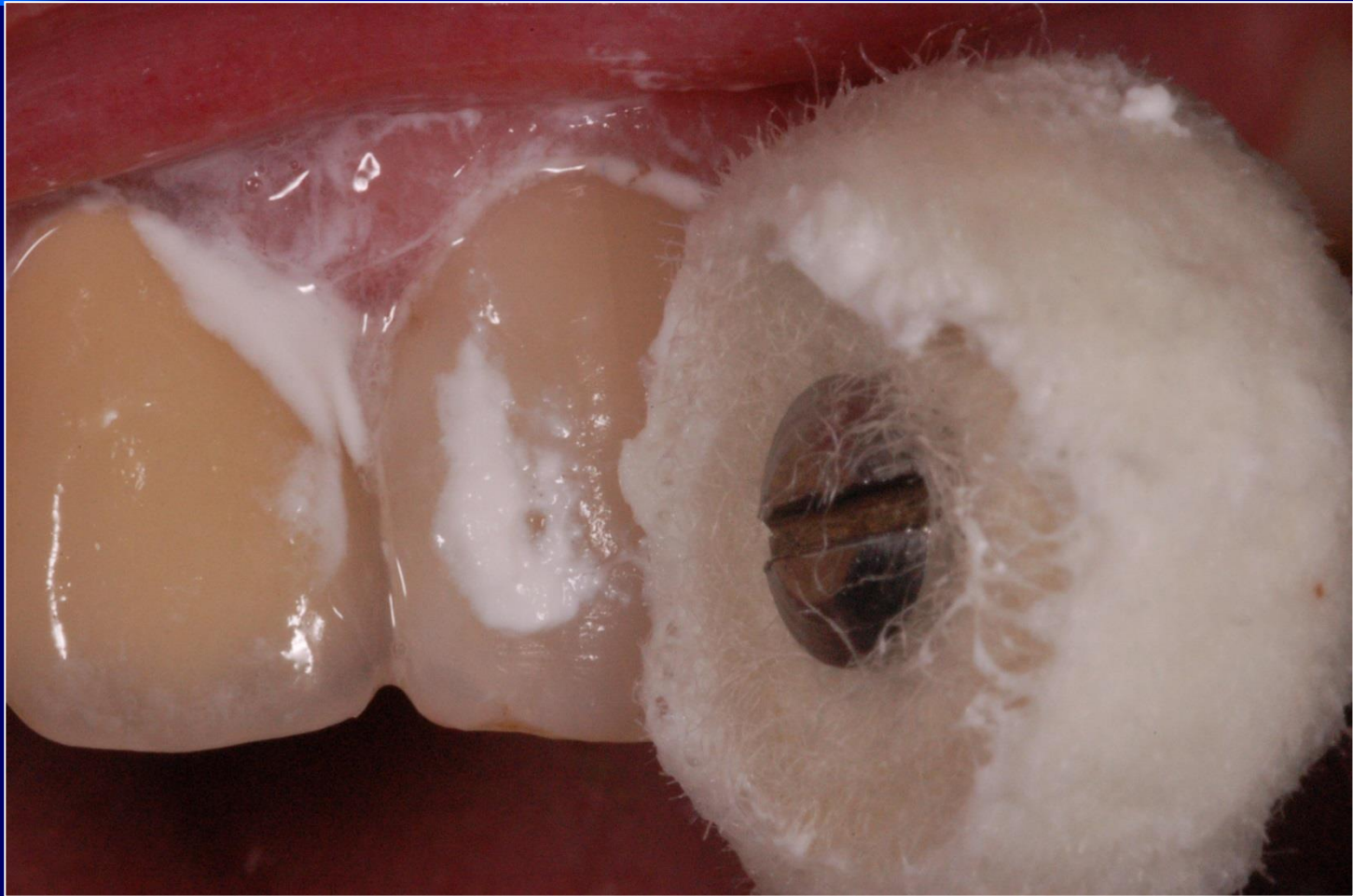
Polishing with the brush and diamond paste 3 μ m



Polishing with the brush and diamond paste 1 μ m



Polishing with a rotary instrument (felt)



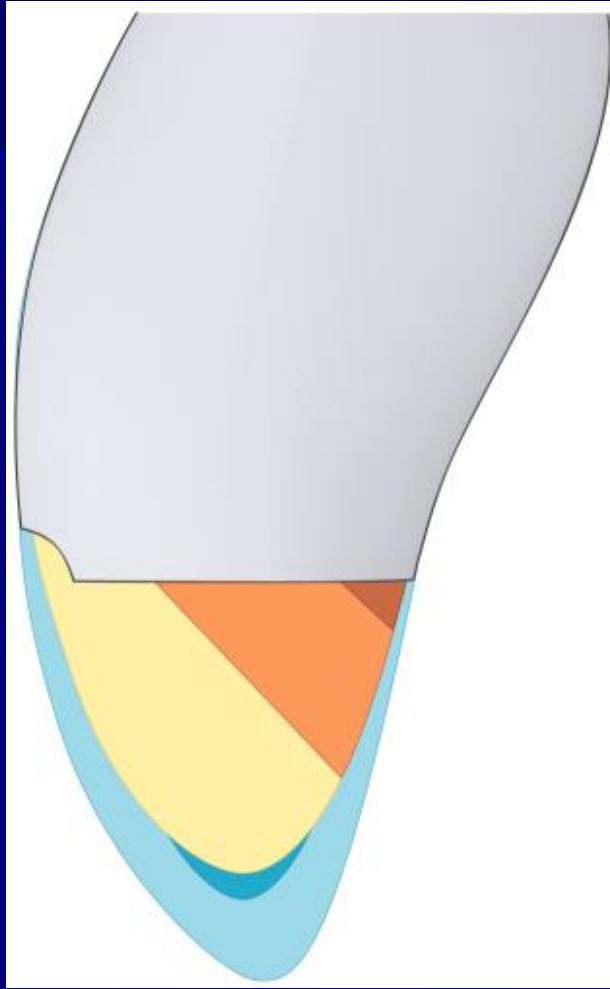
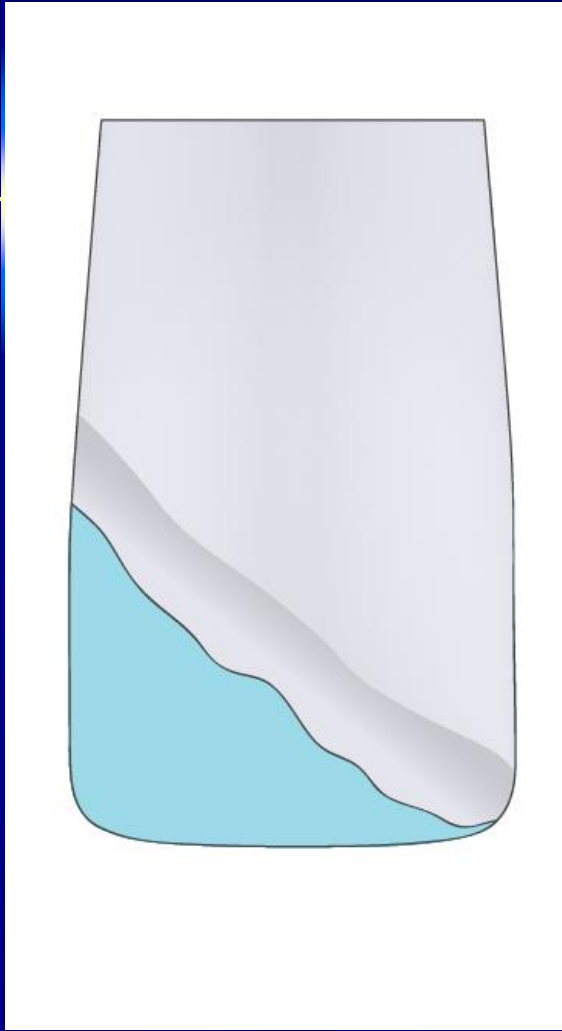
Final result

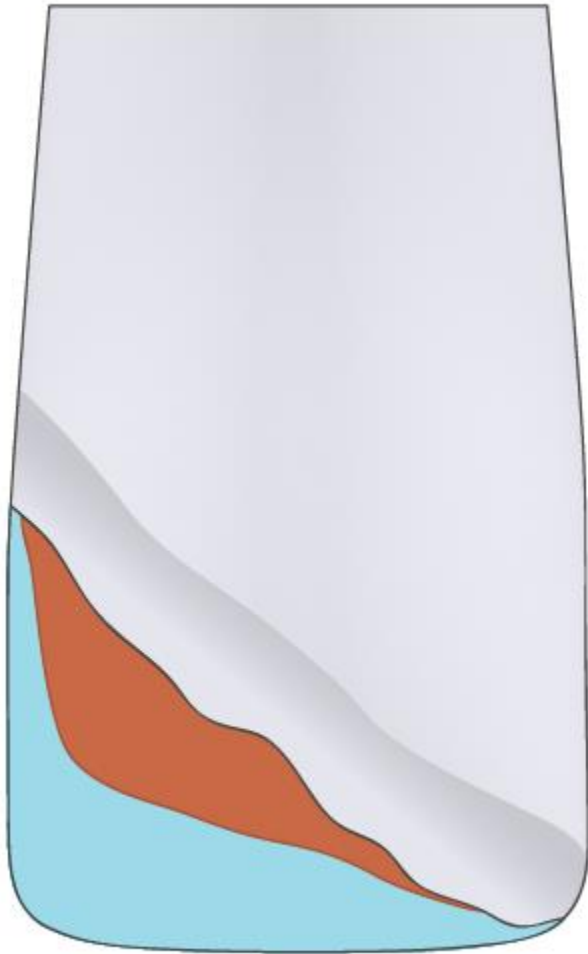


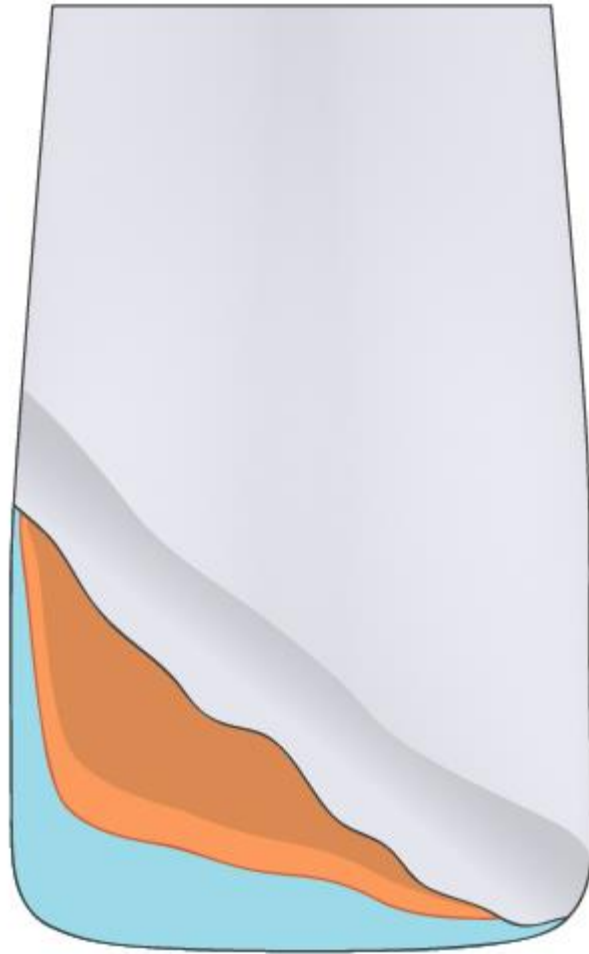
Fourth class

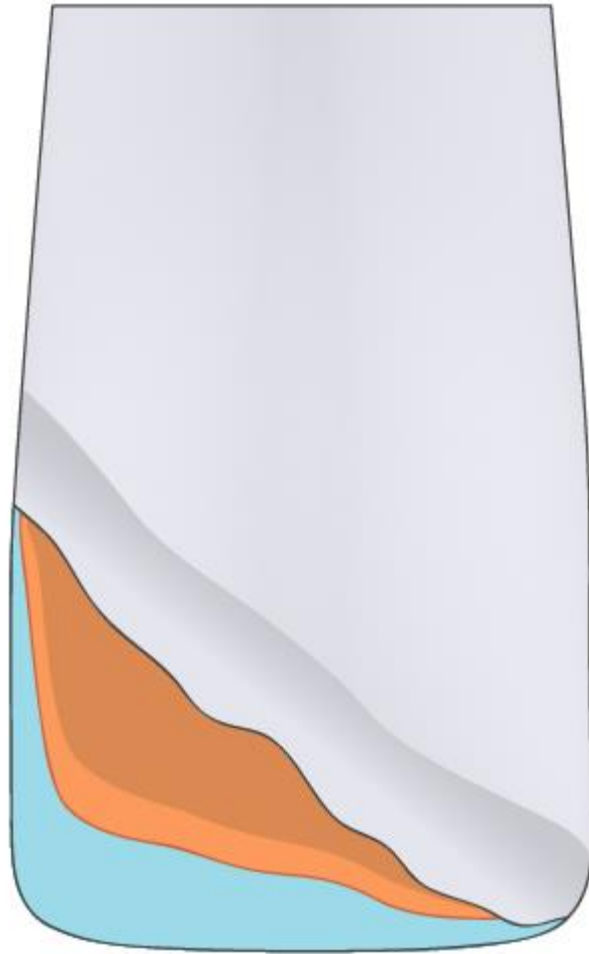
- Caries

- Trauma







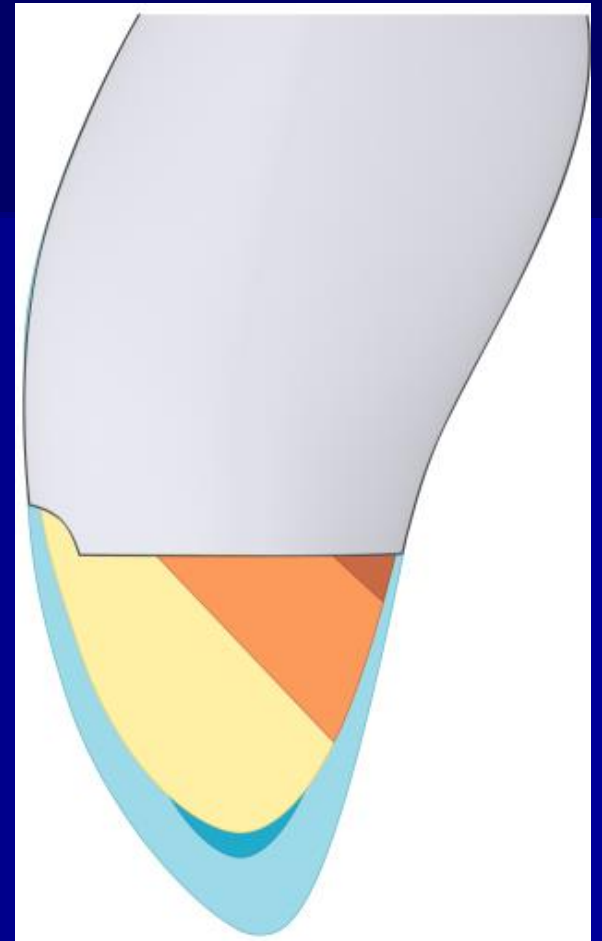
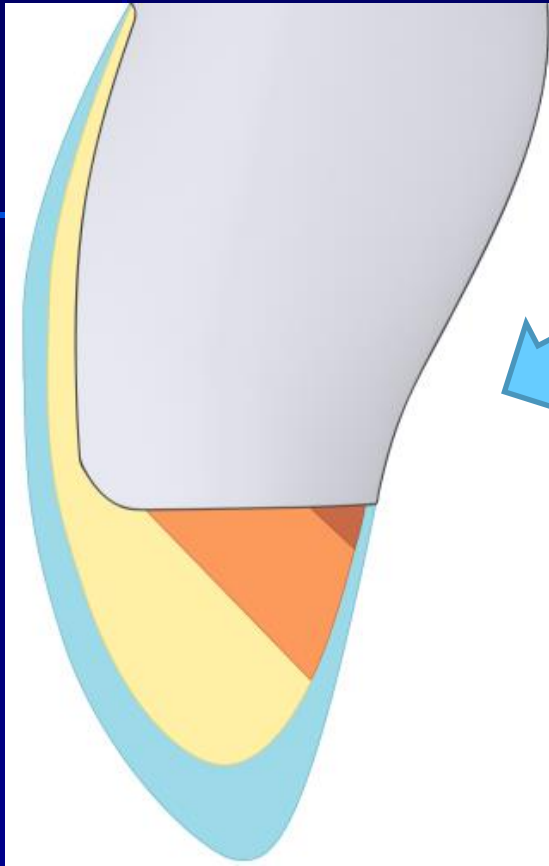








Preparation of the margin



Making the shape

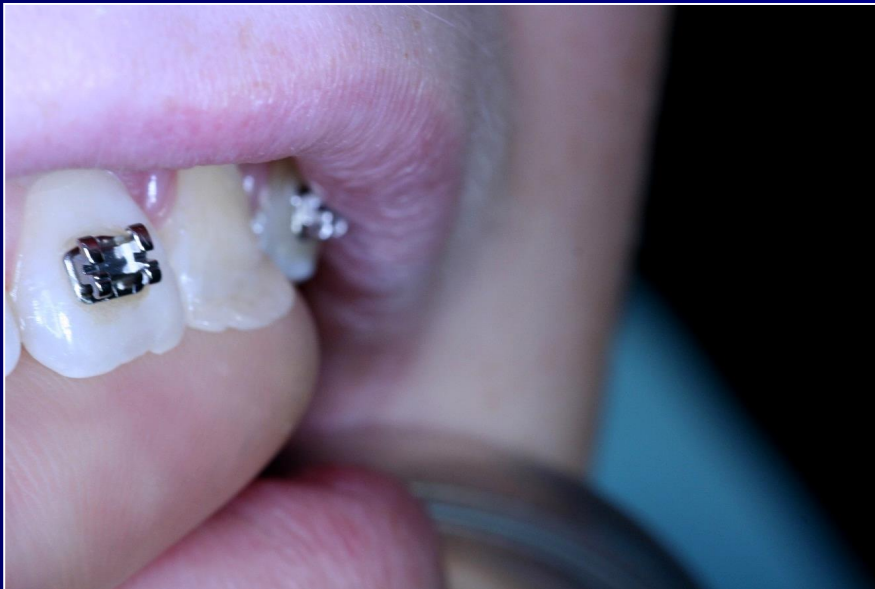


Making the shape

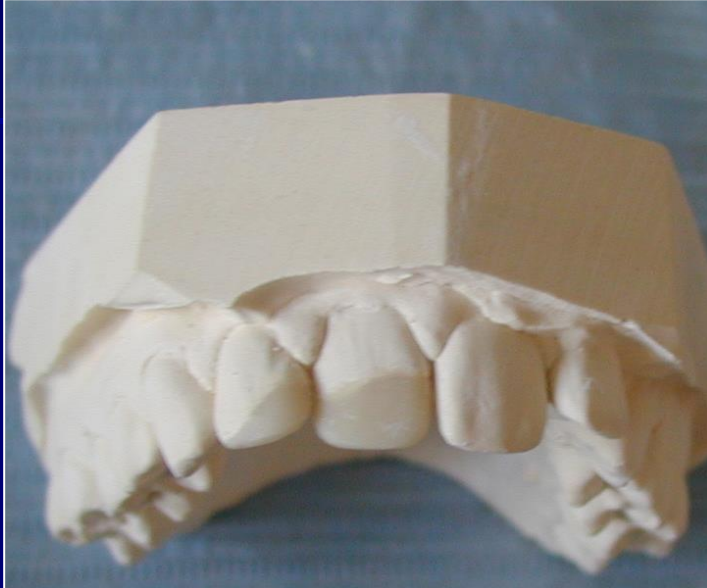
- Position of the palatal wall
- Placement of the transparent strip
- Layering of the composite material

Making the shape

- Position of the palatal wall



Silicone key



Wax up

Silicone key



Mock up



Silicone key



Creation the oral layer - palatally

Location of incisal edge

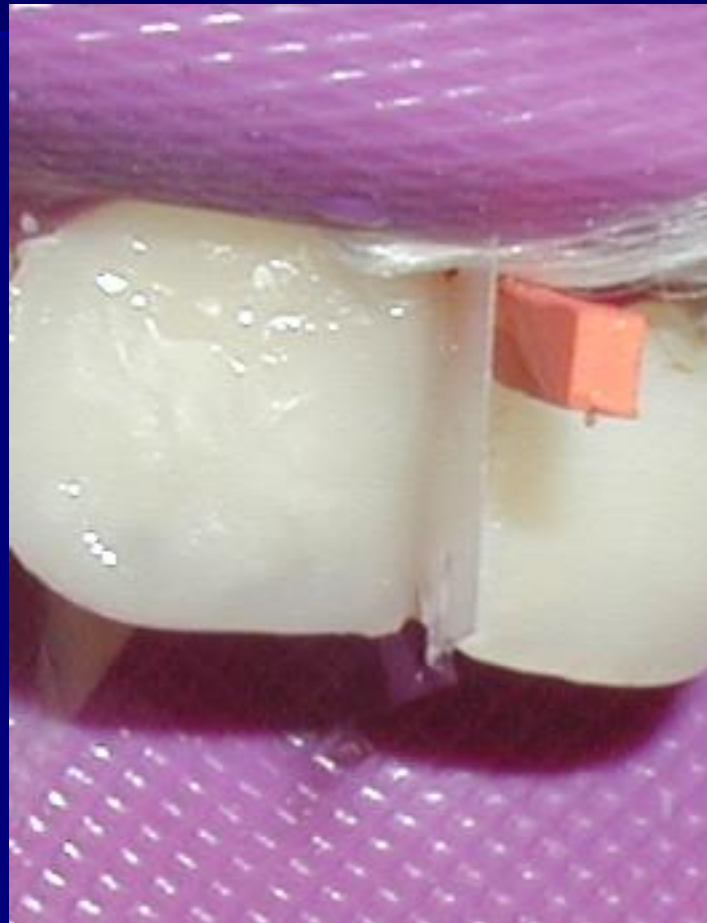


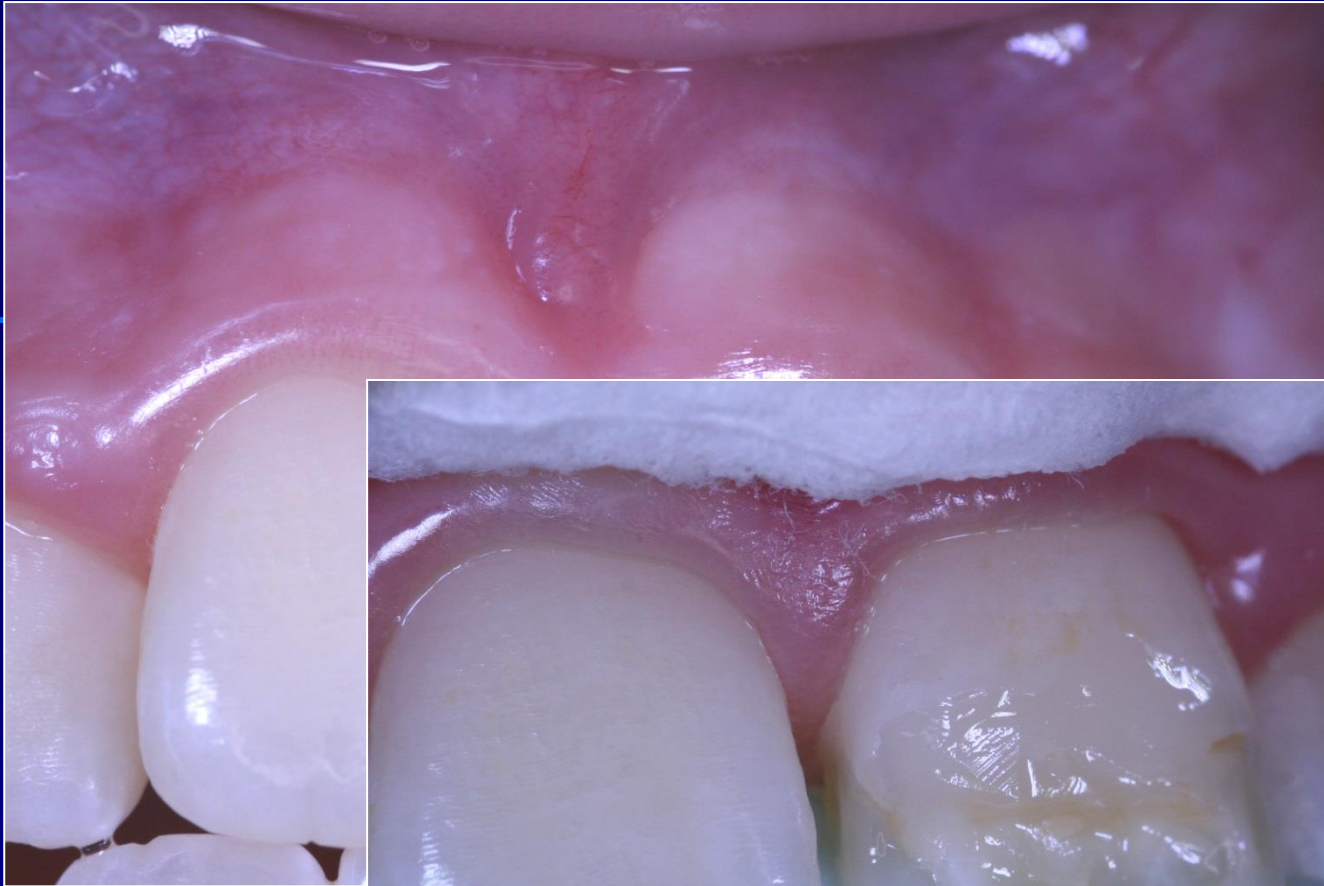




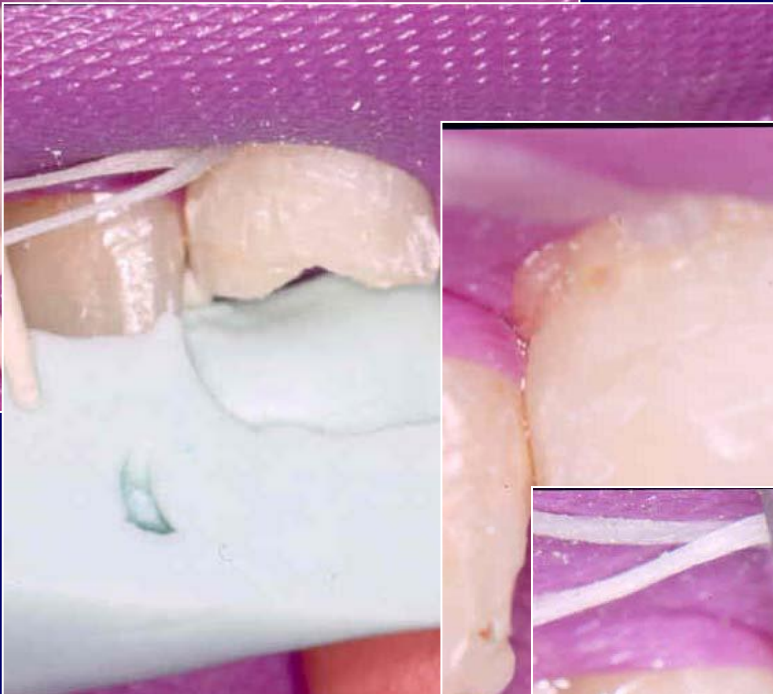














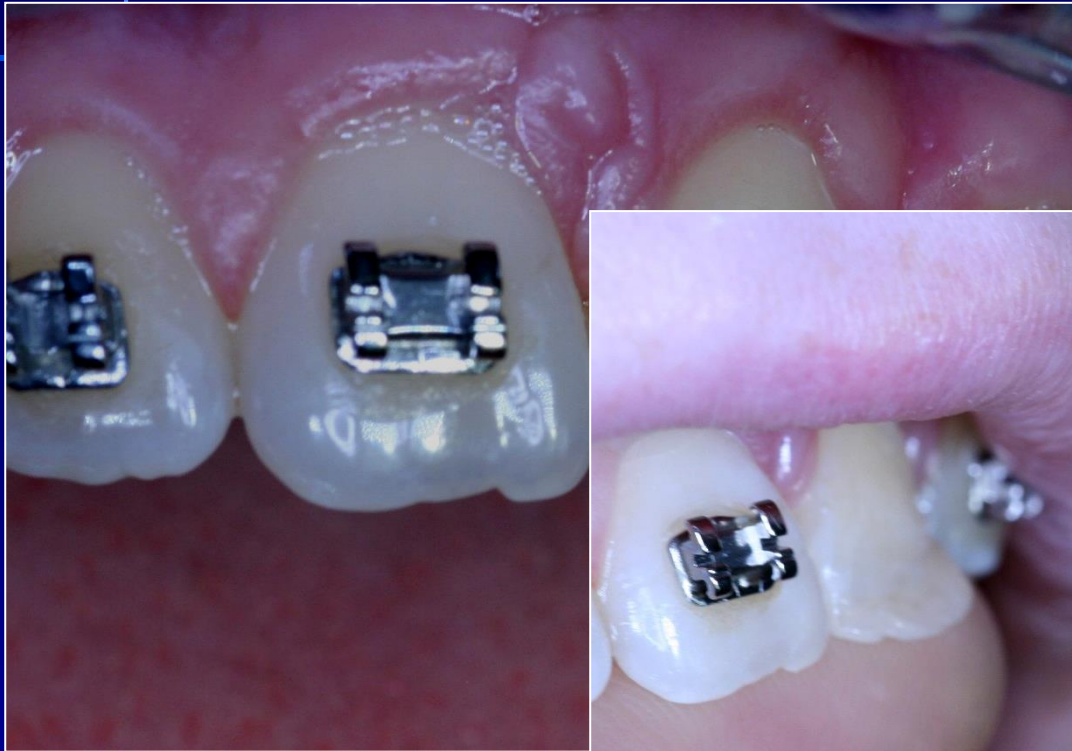


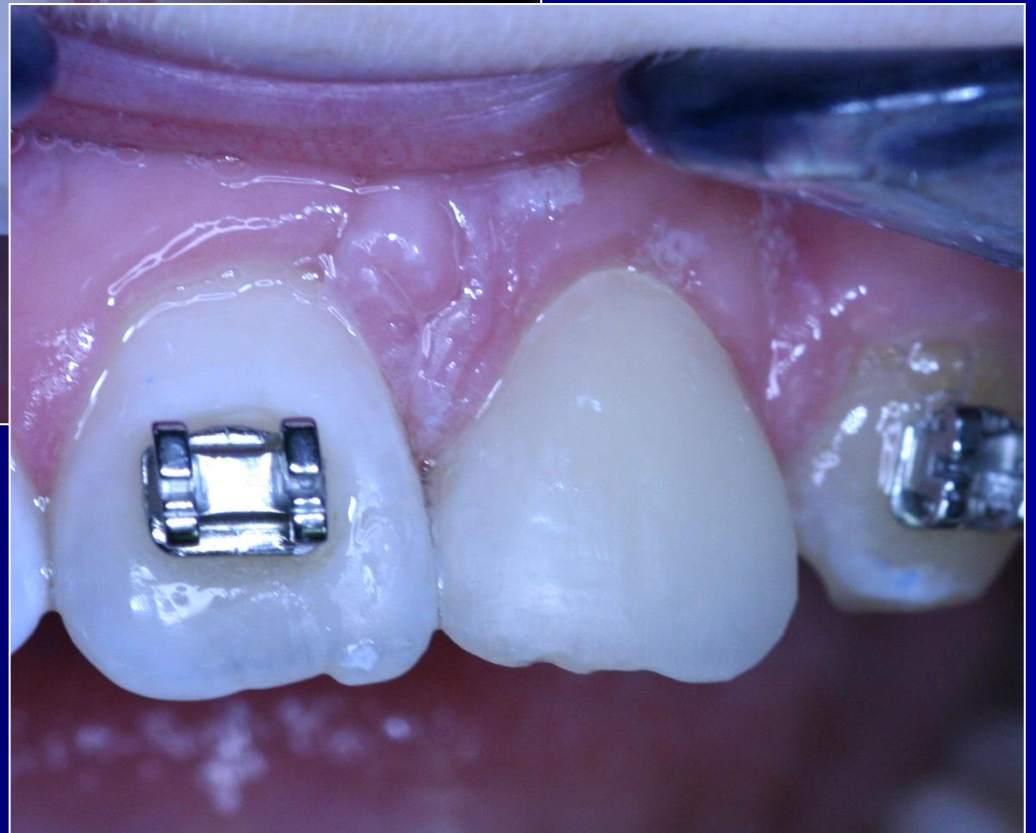
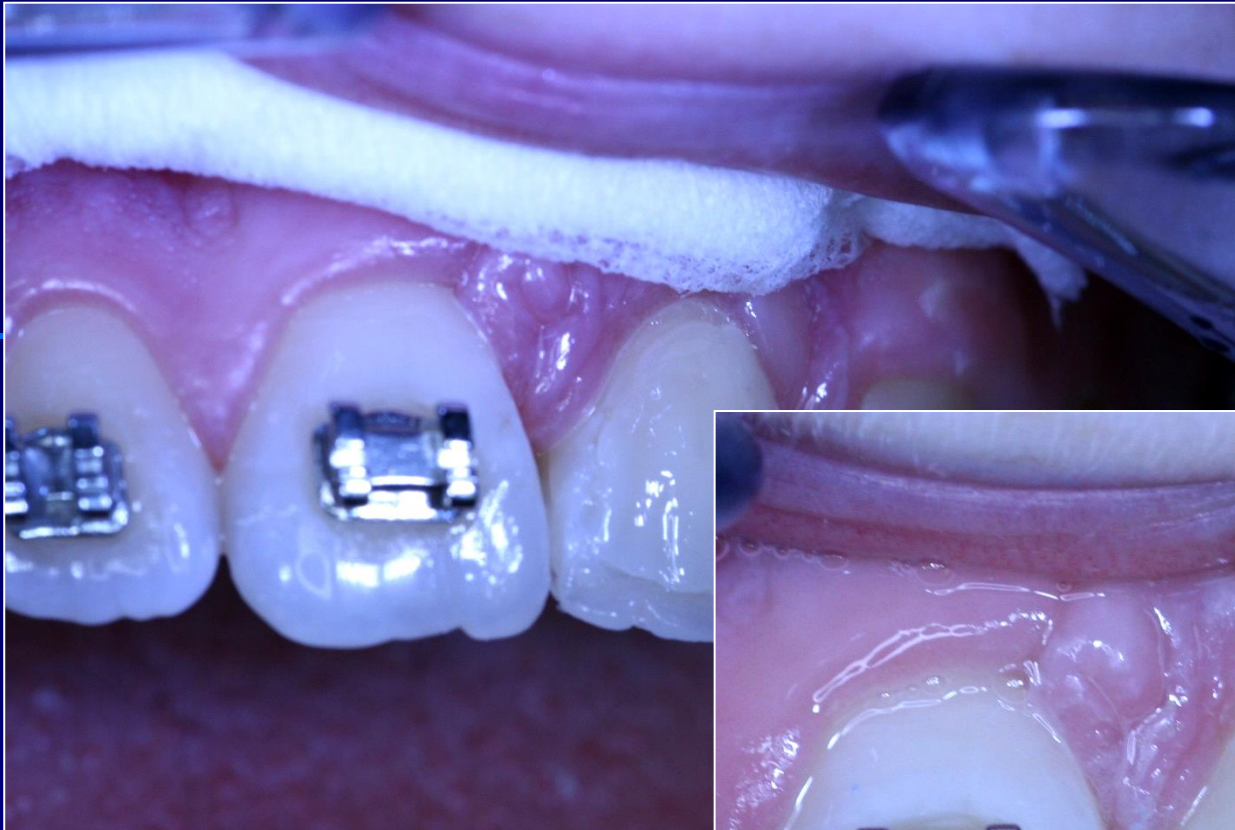




6 years post op
10 years after the first
treatment

Finger method



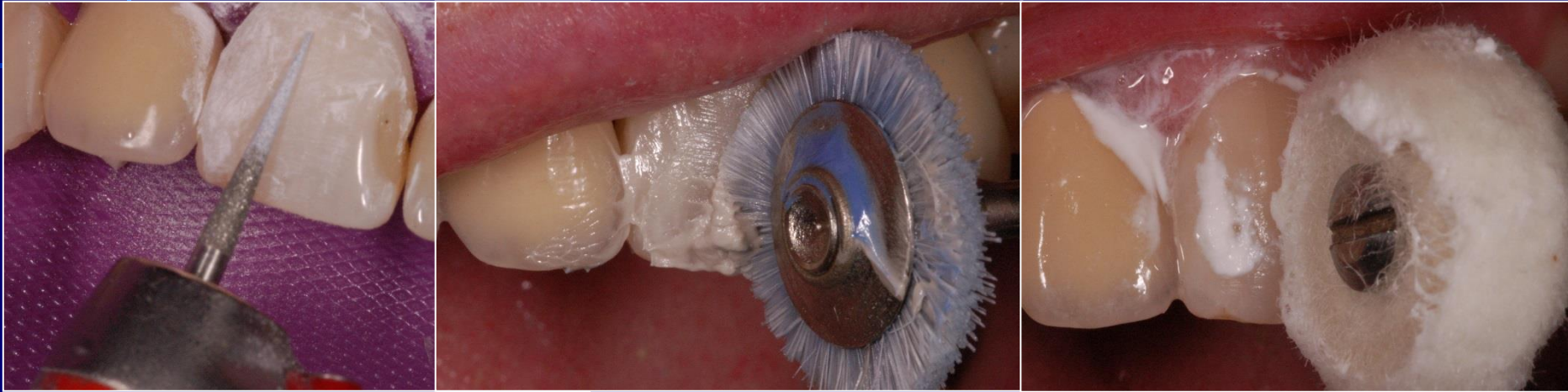








Surface texture



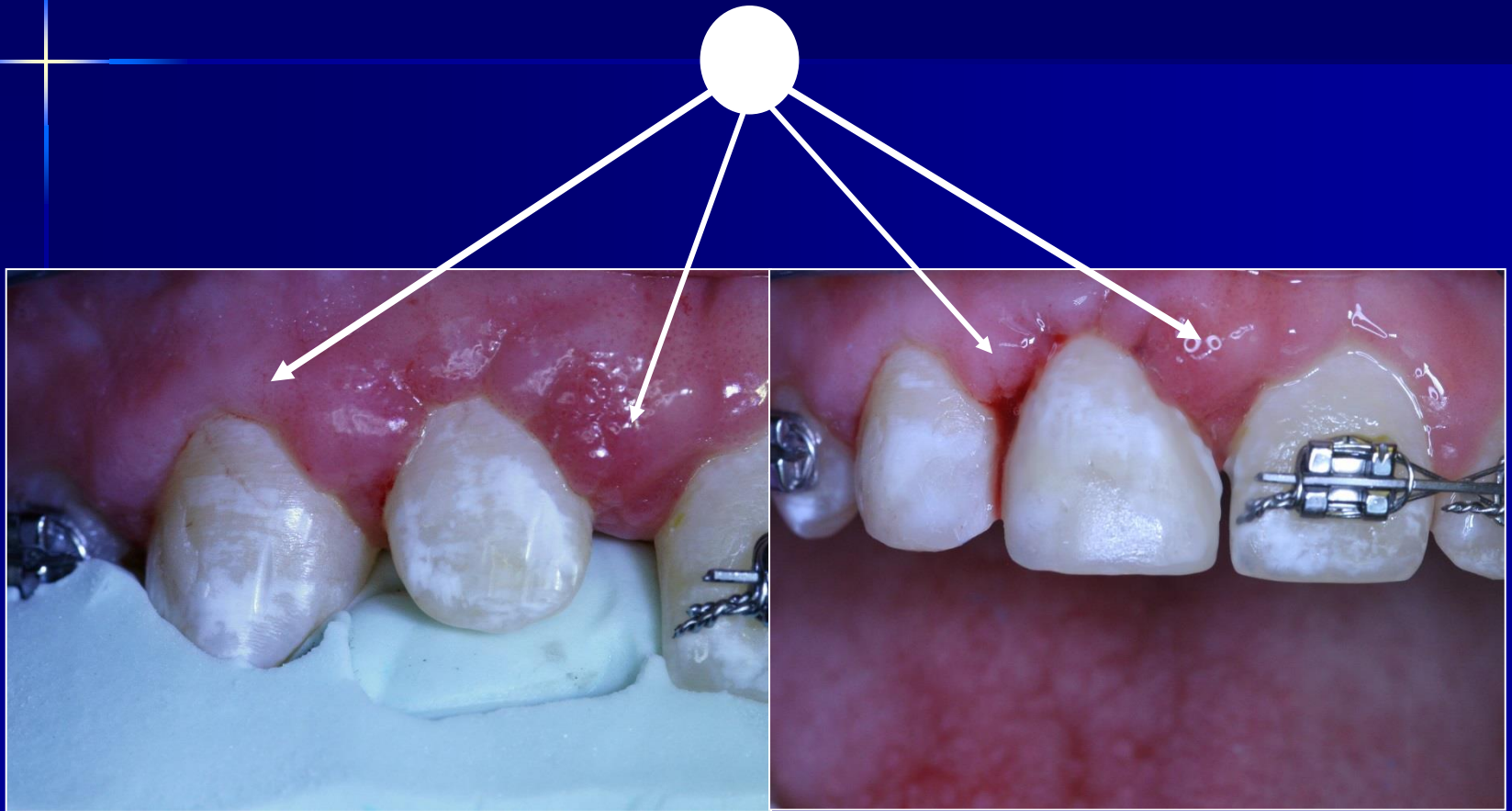


**Correction of the shape
cooperation with the
orthodontists**

Complex approach

- Hygiene and cooperation
- Intermaxillary relations
 - Occlusion
 - Articulation
- Soft tissues

Gingival hyperplasia



Gingival hyperplasia

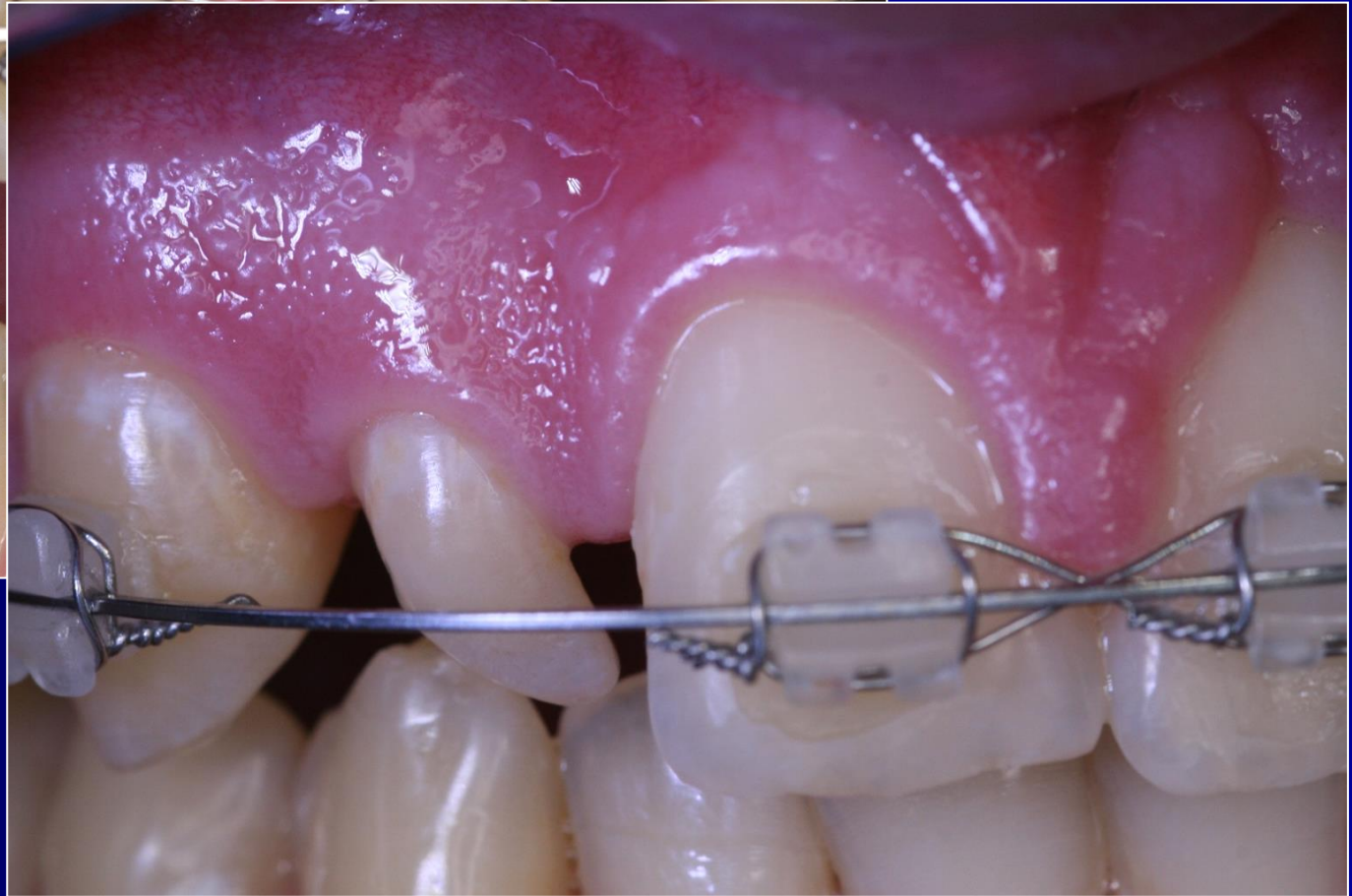
- Improvement of oral hagiene
- Tooth brushing (Bass technique)
- Gingivoplasty

Microdontia



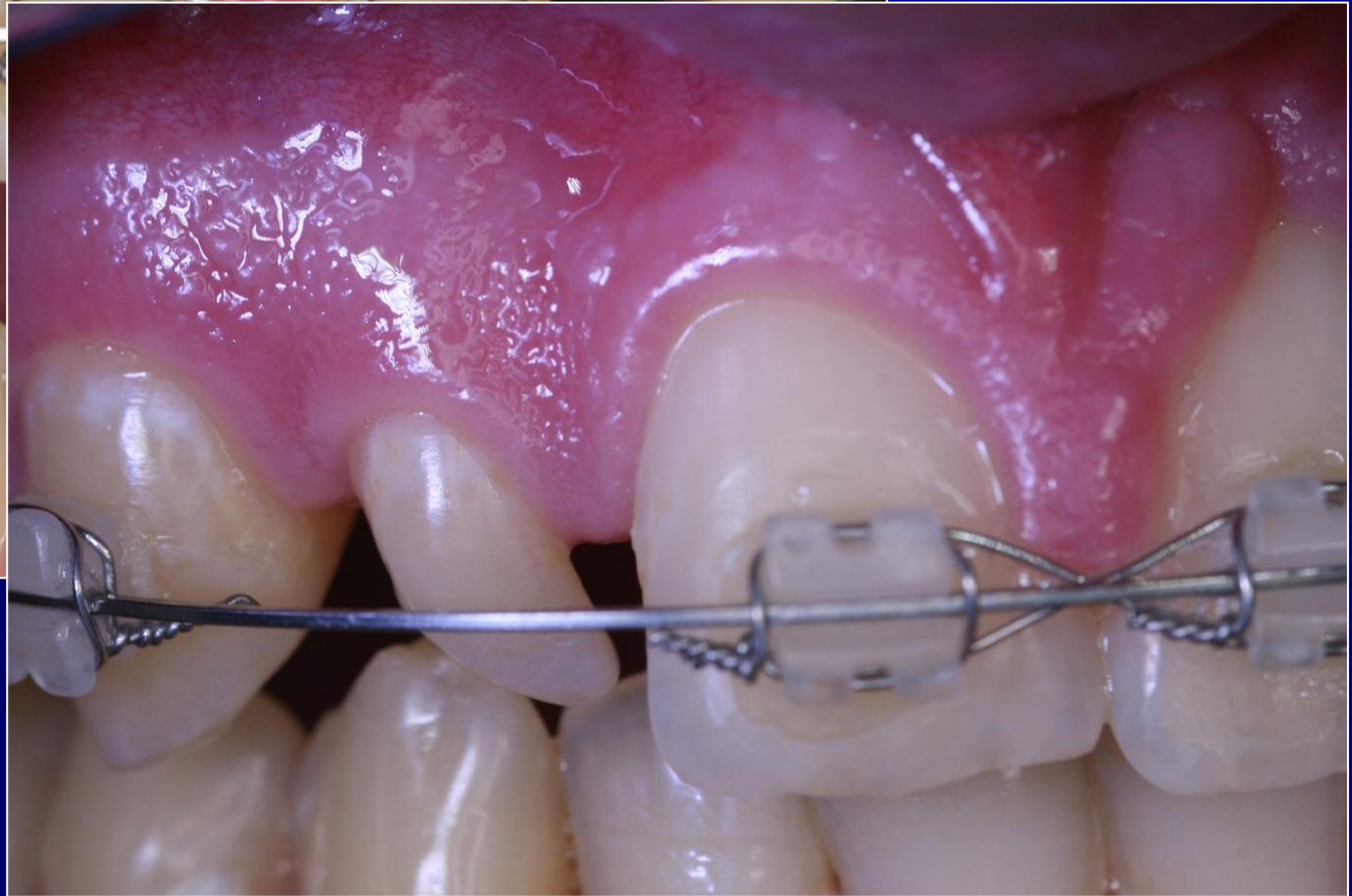










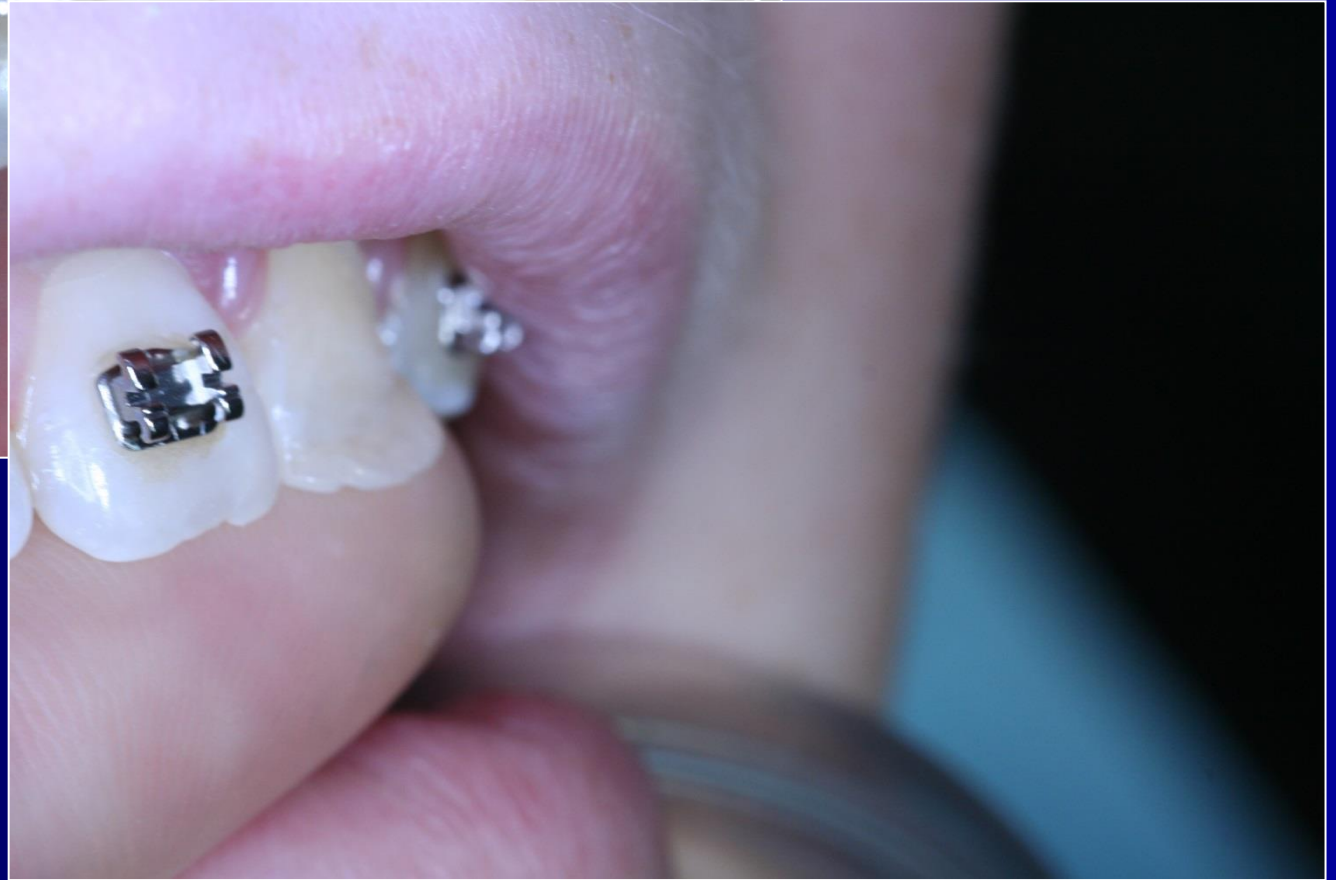
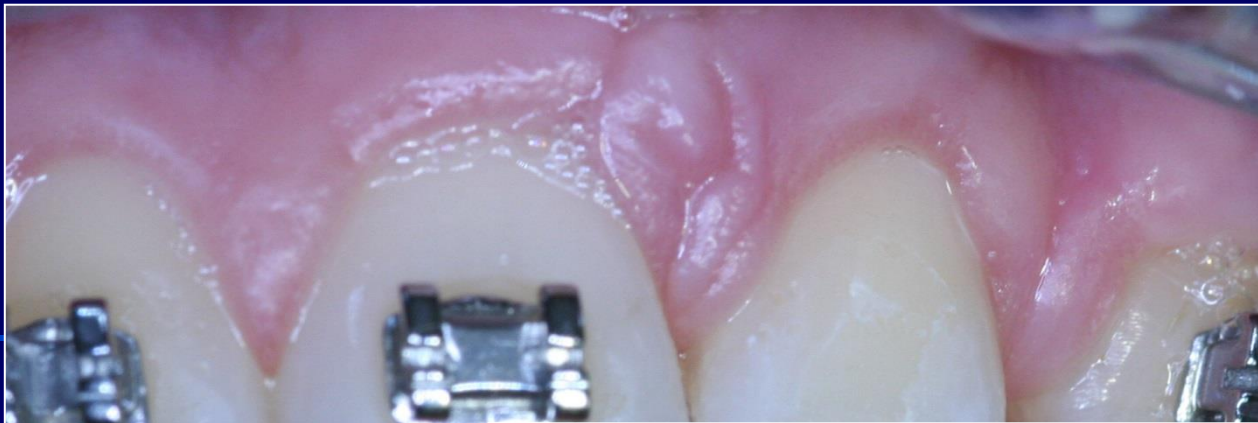


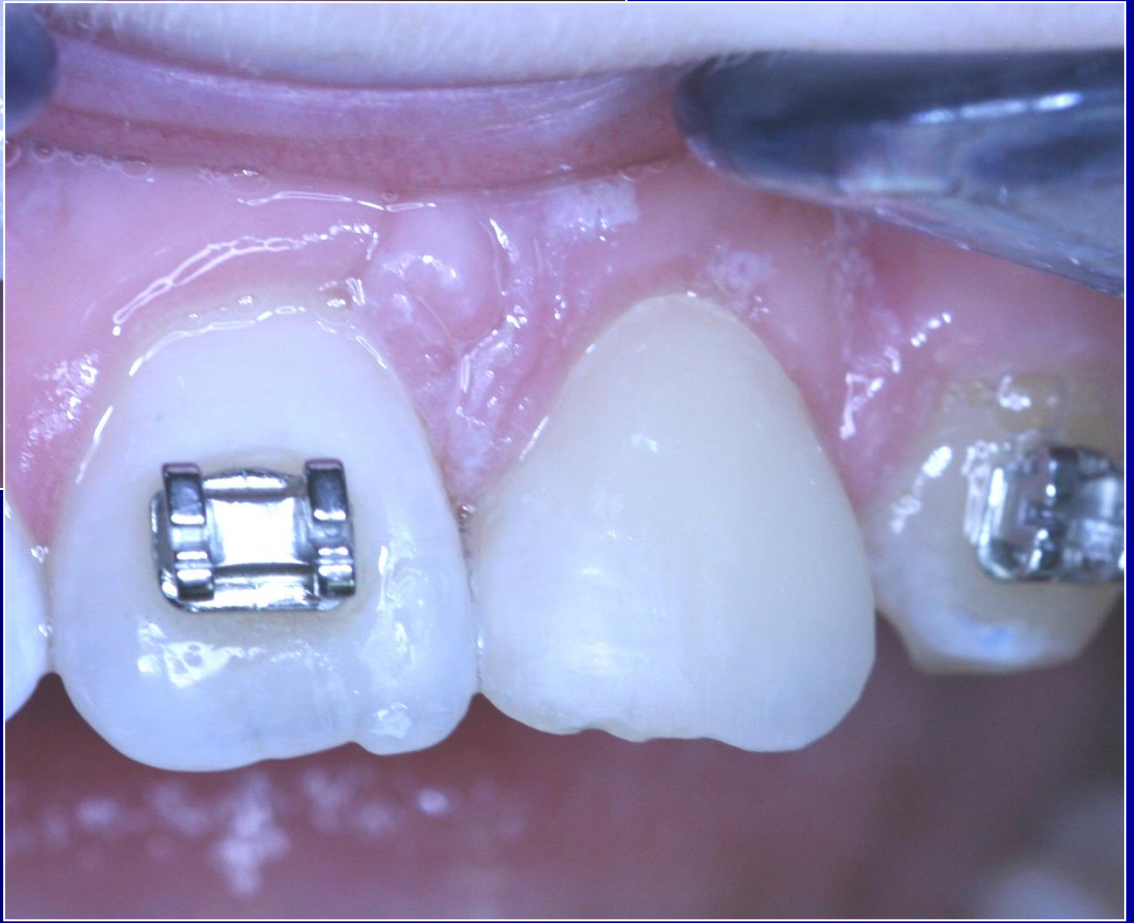
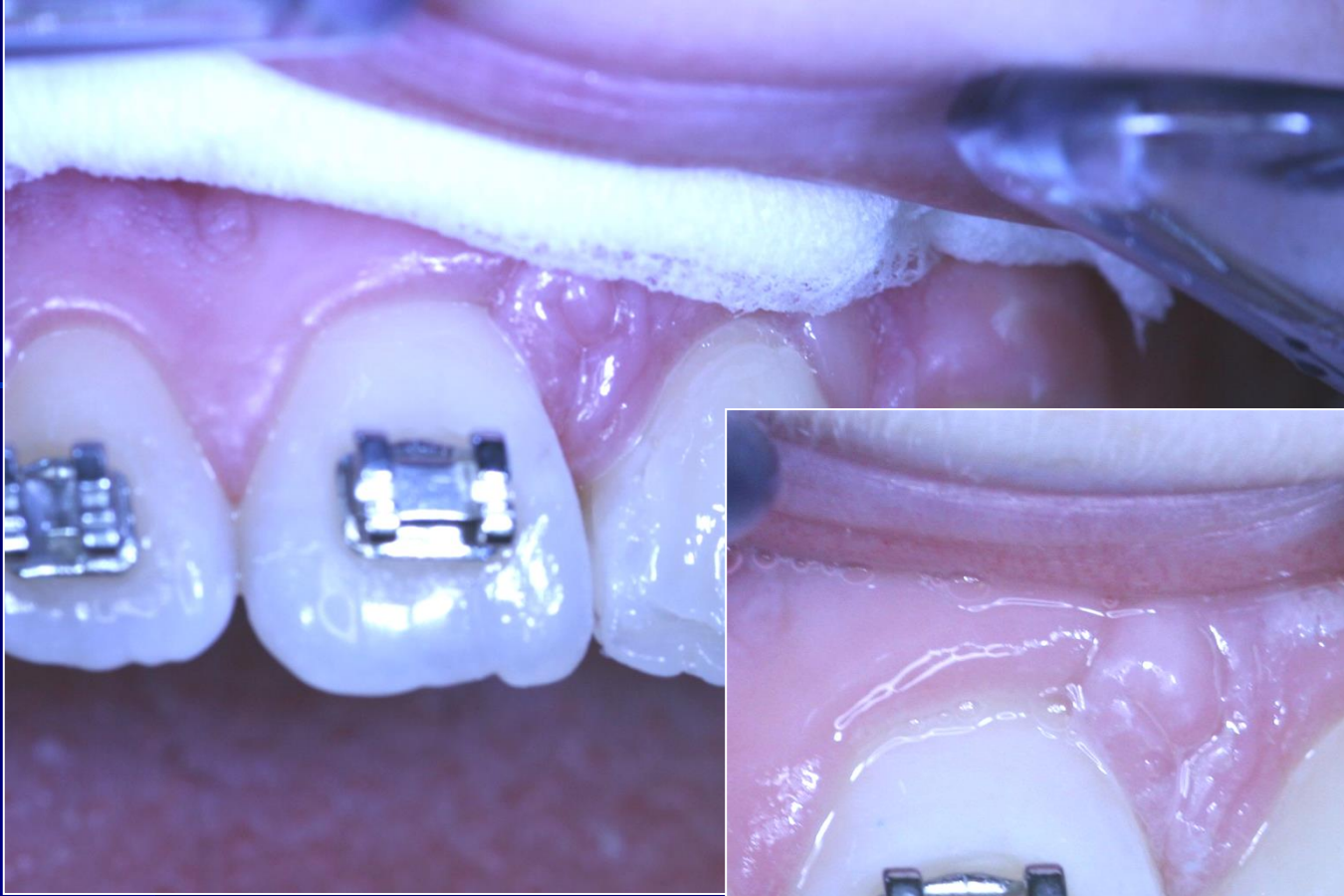






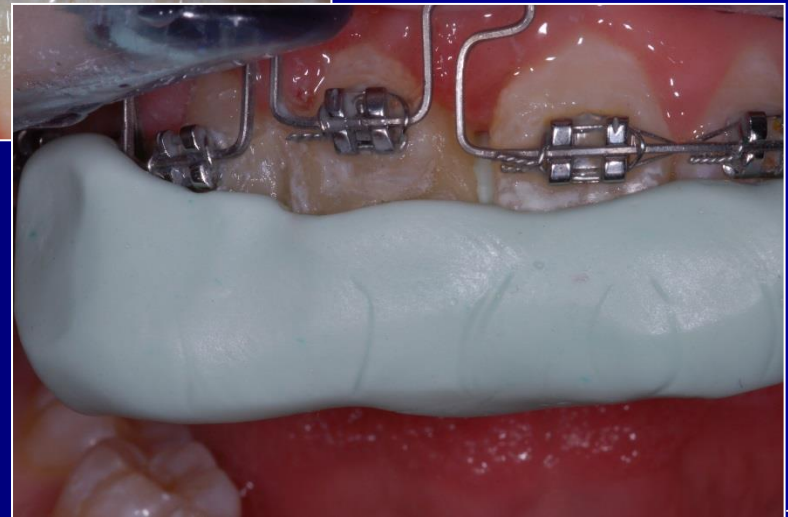
Correction of the size and shape











Closure of spaces







Pre op

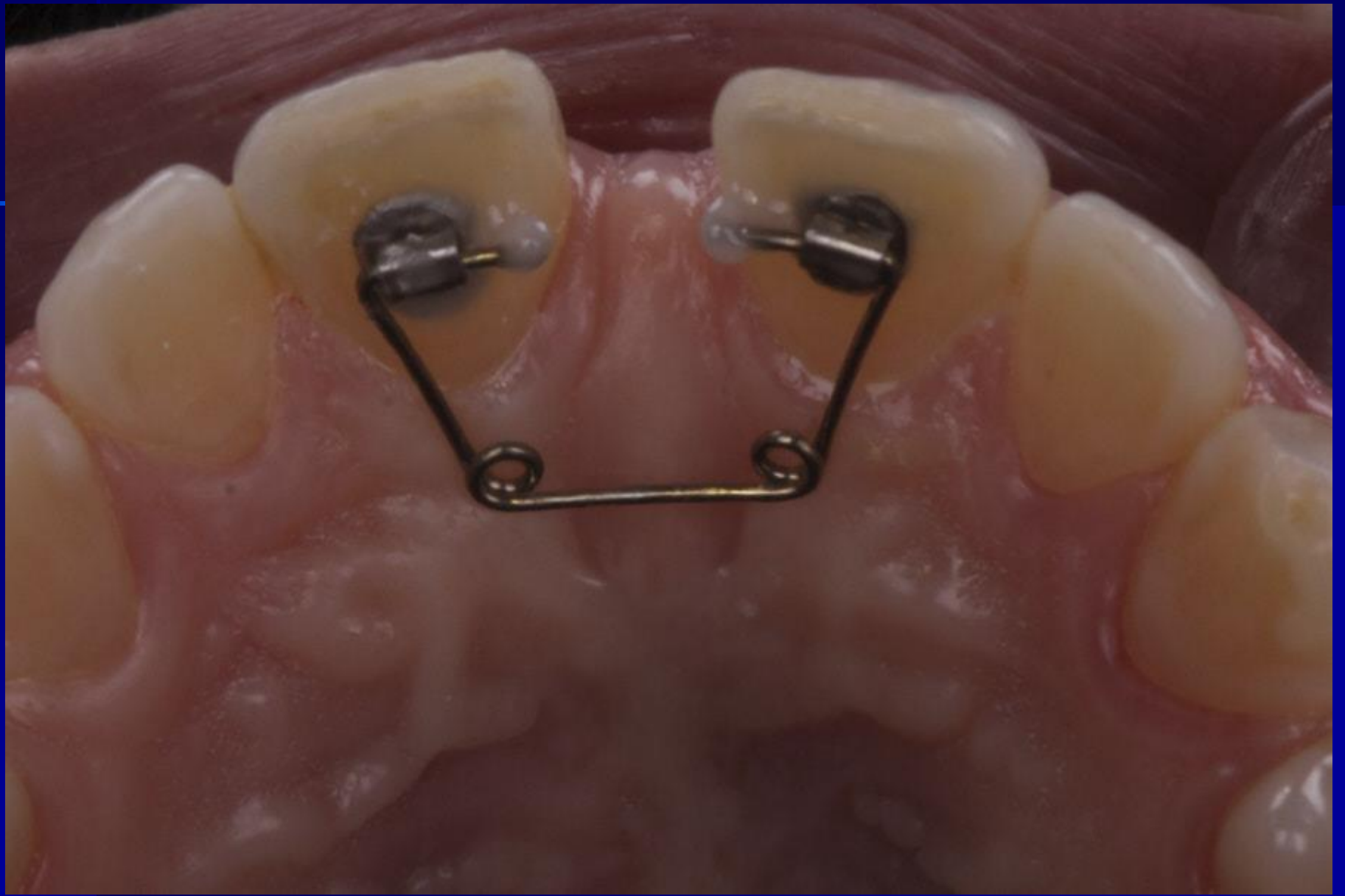


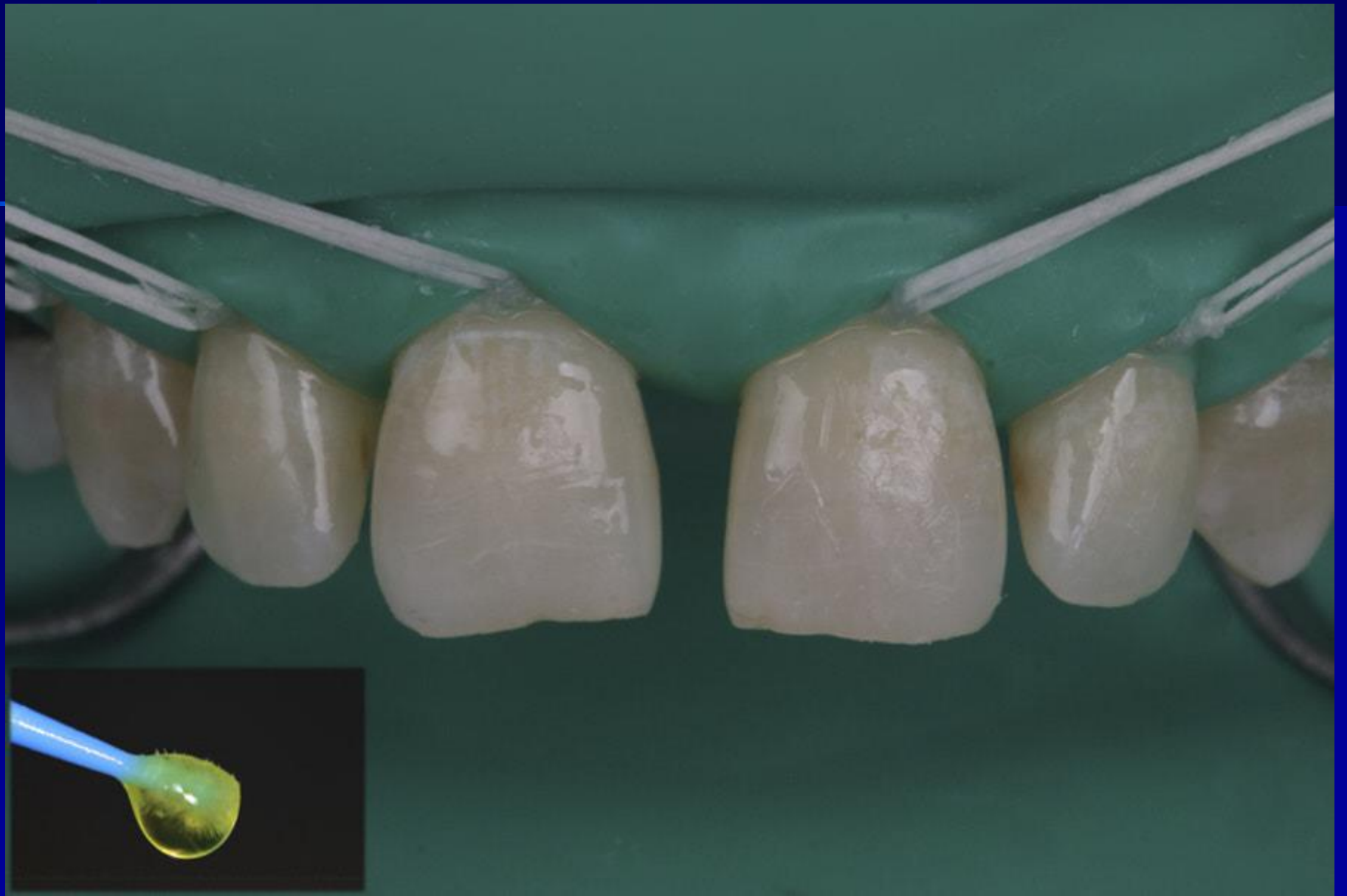
Mock up



Diastema closure

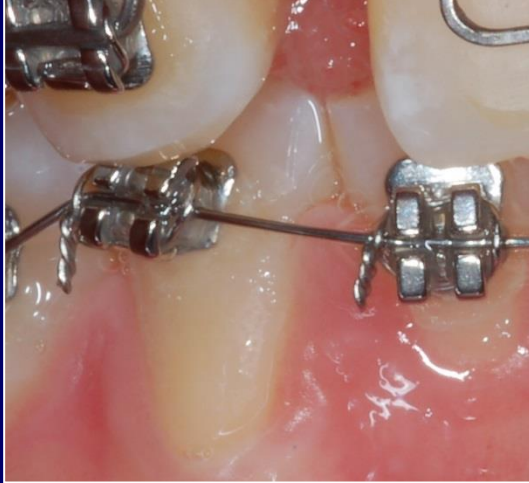
- Orthodontic approach
- Restorative approach
- Combination
- *Frenectomy can be also performed*



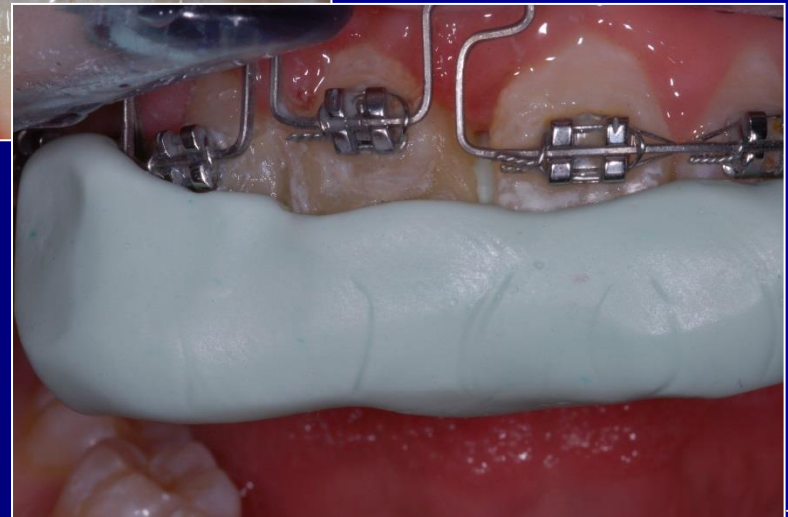












Periodontology

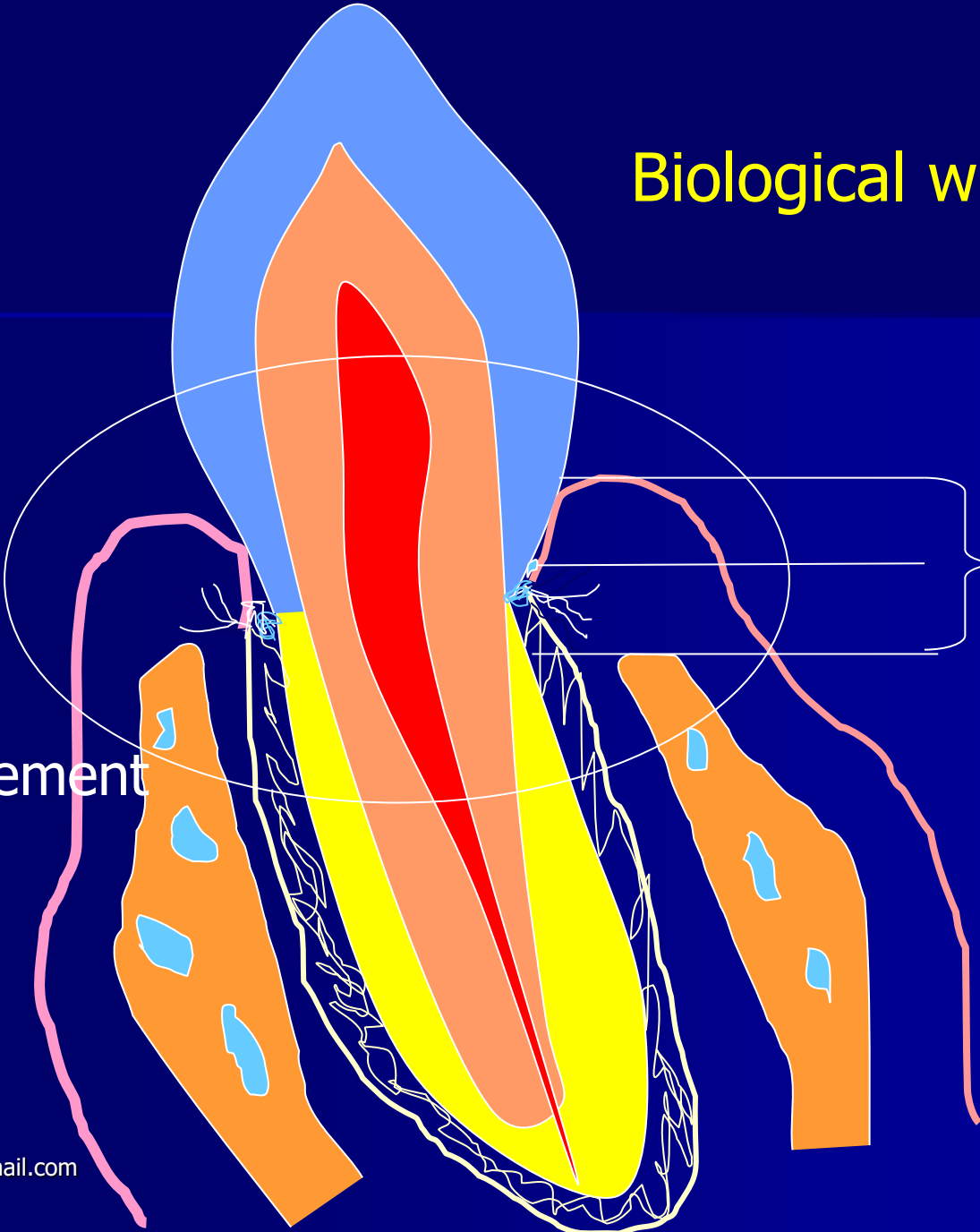
- Frenectomy
- Gingivoplasty
- Gingivectomy – elongation of the clinical crown
- Ostectomy – elongation of clinical crown

Biological width

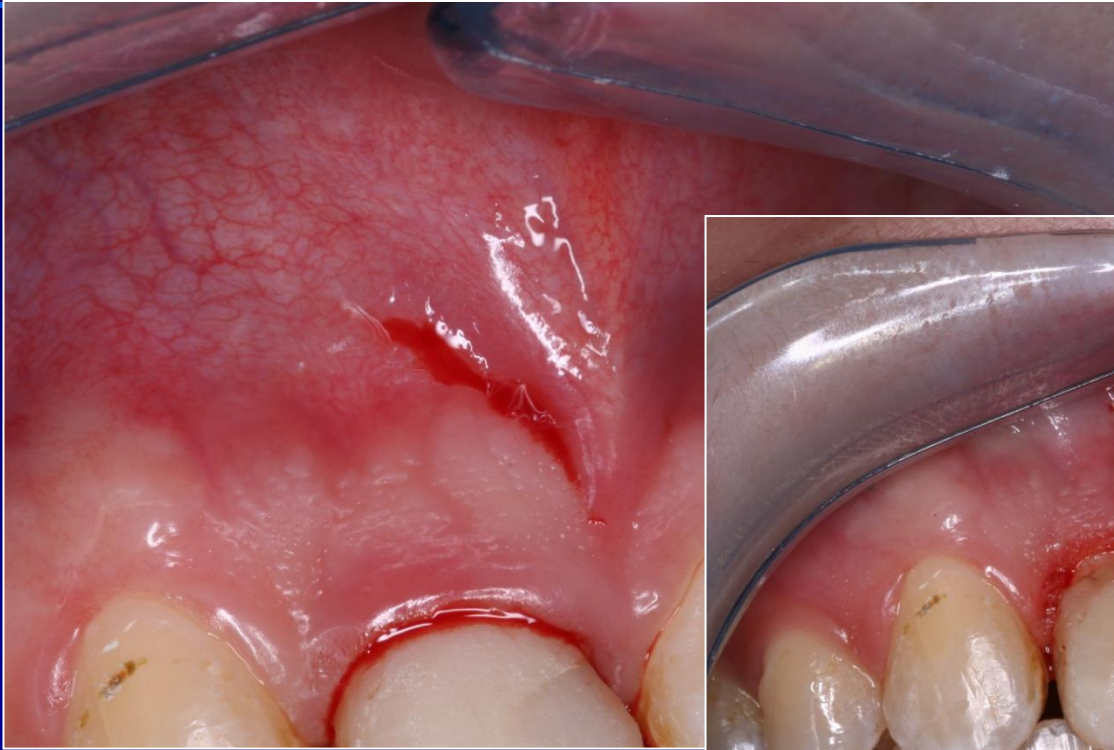
Epithelium
attachement

Connective
tissue attachement

2 - 3 mm



Elongation of clinical crown











Elongation of clinical crown







Iroubalikova@gmail.com



Reattachment

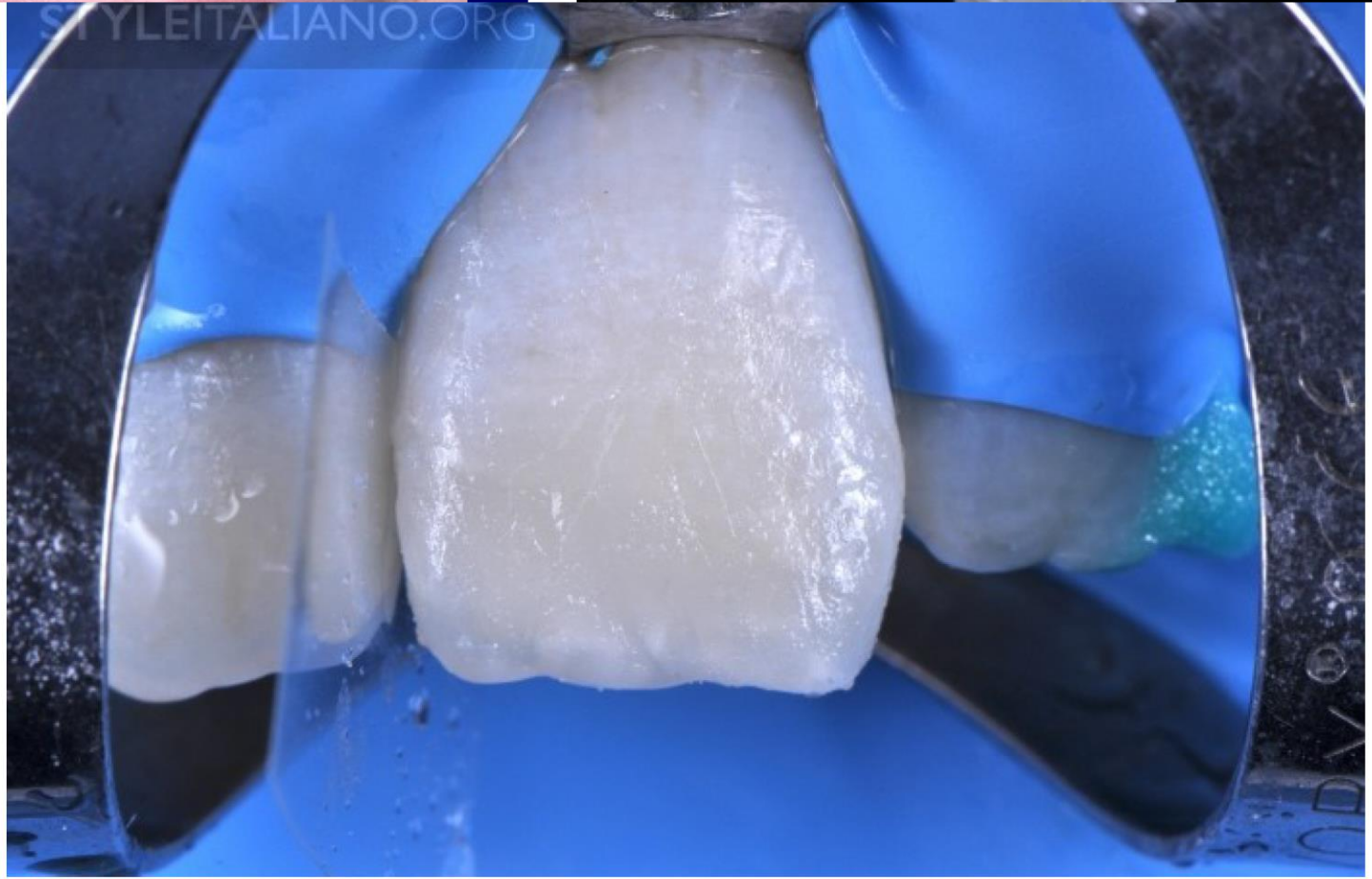


GIUSEPPE MARCHETTI

--

CLASS IV REATTACHMENT AND
RESTORATION WITH ONE SHADE

230 Views - Apr 2017



It be the

Img. 9 - In a few minutes, the two pieces are bonded and the missing part is ended too, with the body



www.styleitaliano.org - CLASS IV REATTACHMENT AND RESTORATION WITH ONE SHADE



Img. 9 - In a few min

Reattachment

- 1. Check the fragment
- 2. Prepare the shallow groove around the defect in the tooth as well as in the fragment
- 3. Use adhesive procedure
- 4. Attach using flowable and composite filling material

Case report – complex approach



- Before the treatment

Case report- complex approach

- After orthodontic therapy



Case report – complex approach



Final result

Ceramic restoratio