

**General oncology:  
benign and malignant tumors.  
Classification. Cancerogenesis.**

Markéta Hermanová

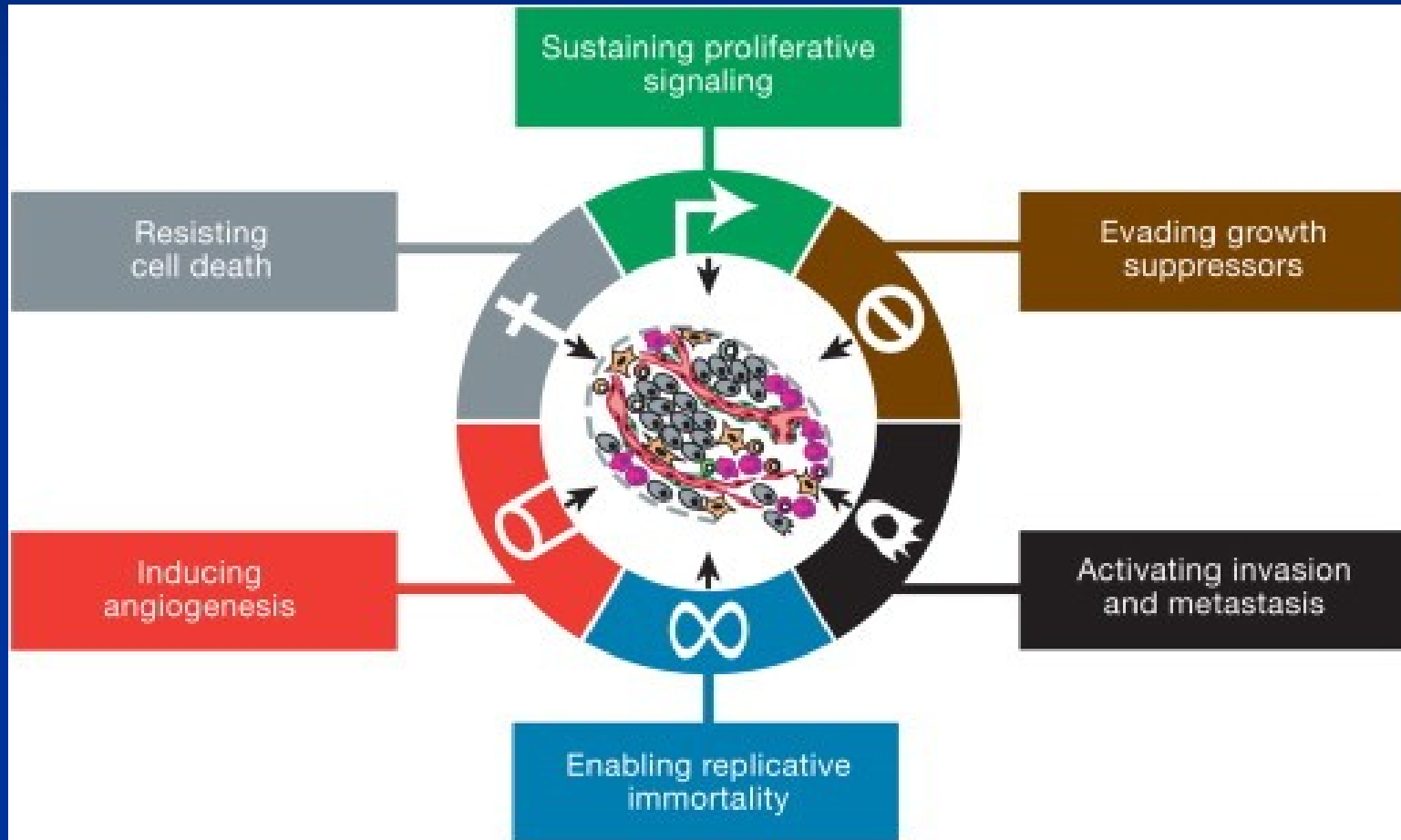
# Neoplasia, tumor - definition

- „abnormal mass of tissue, the growth of which exceeds and is uncoordinated with that of the normal tissues and persists after cessation of the stimuli which evoked the change“ (Willis)
- Genetic and regulatory changes → functional dysregulation of proliferation that becomes autonomous + failure of the process of natural cell death
- Clonal proliferation/expansion of the transformed cell (tumors are monoclonal)
- Sporadic mutations in somatic cell or germline mutations

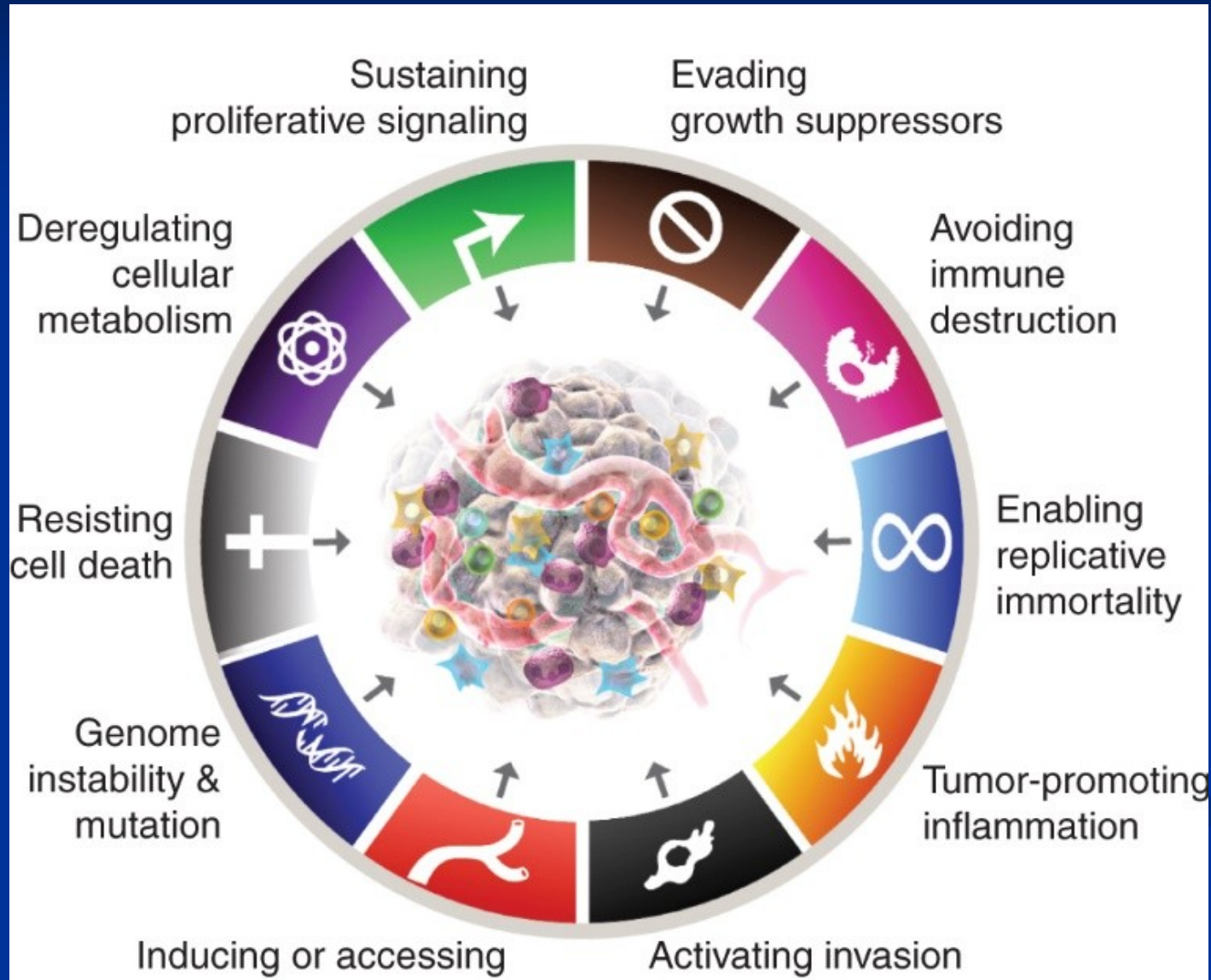
# Carcinogenesis

- Multistep process at both phenotypic and genetic levels
- Nonlethal genetic damage (or mutation)
  - exogenic factors (radiation, chemicals, viruses,...)
  - endogenic factors (toxic radicals, genome instability, failure of DNA damage repair, chromosomal rearrangements,...)
  - germline mutations
- Clonal expansion of a single precursor cell that has incurred the genetic damage (tumors are monoclonal)

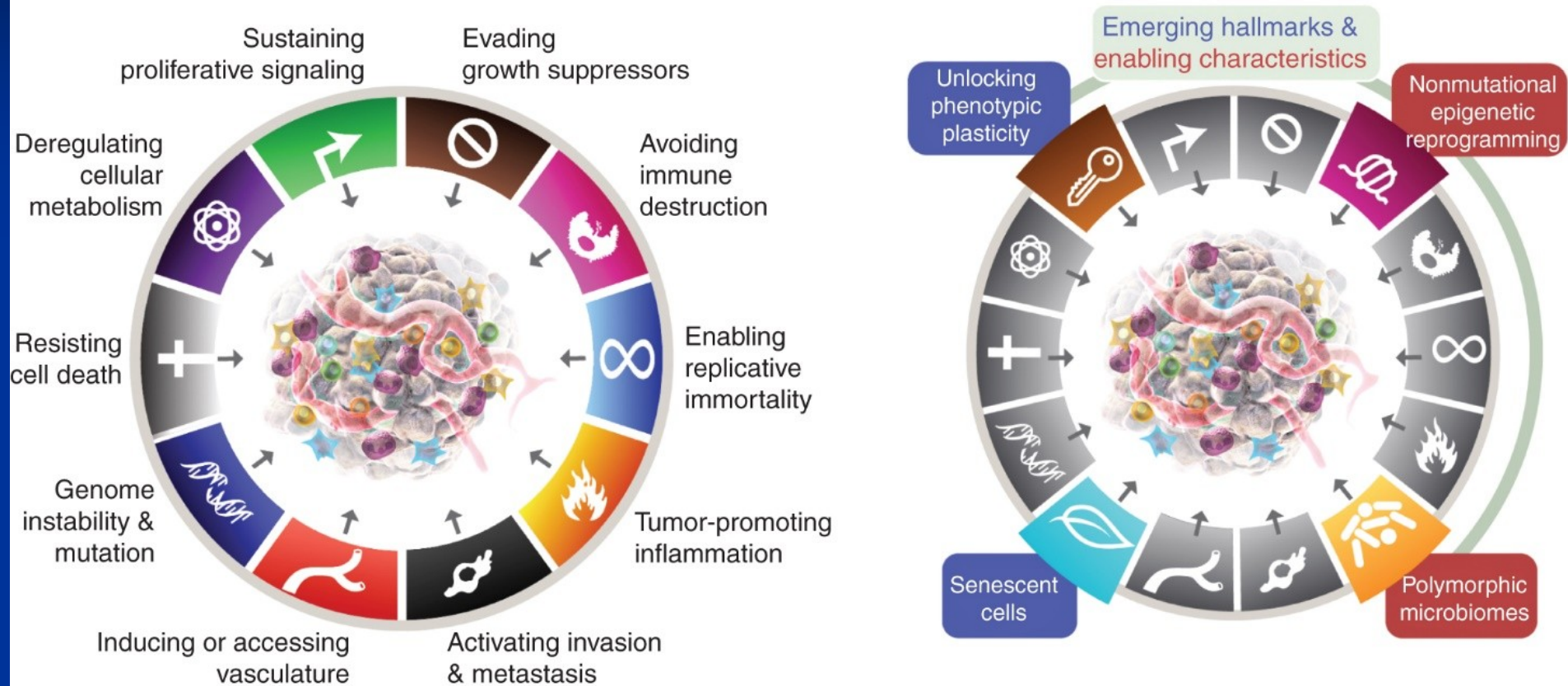
# The Hallmarks of Cancer



# The Hallmarks of Cancer

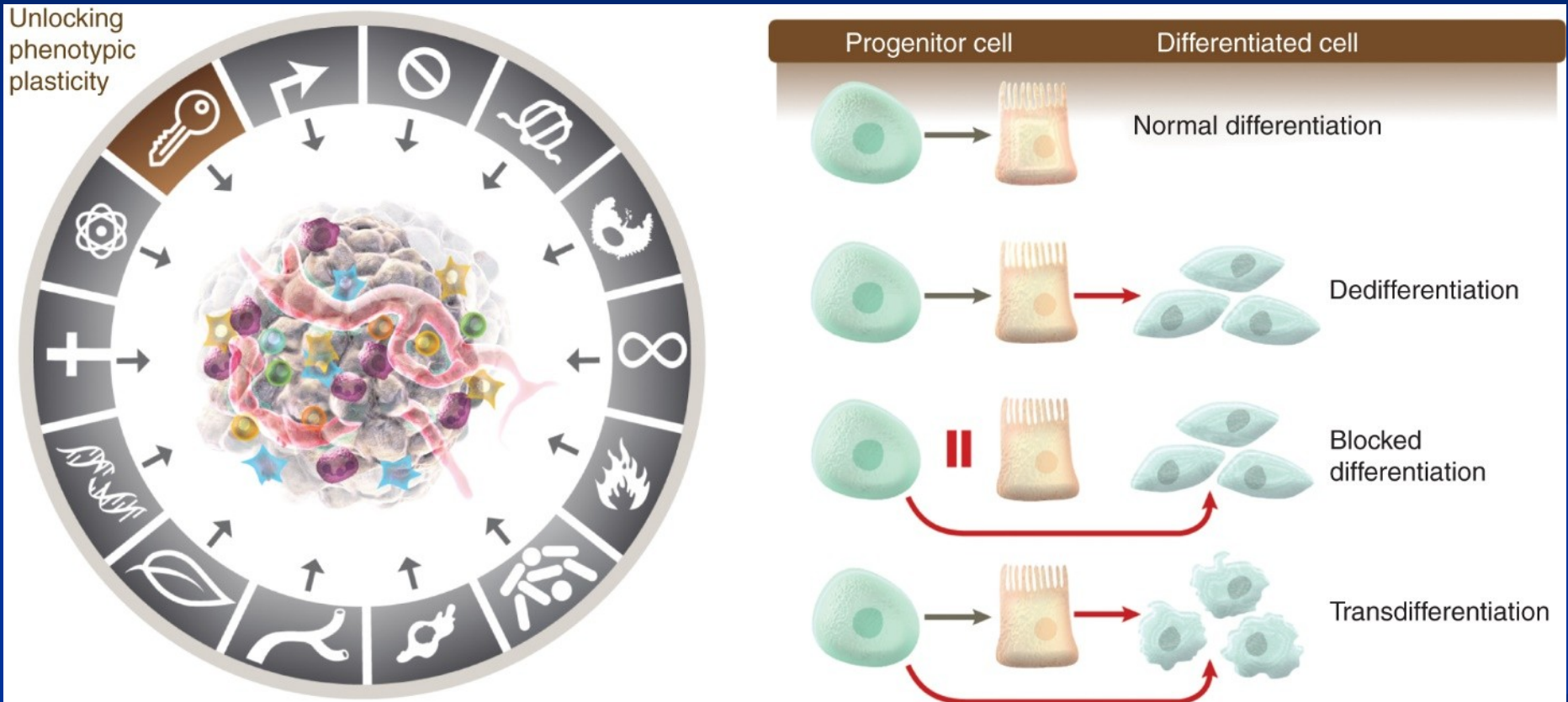


# The Hallmarks of Cancer



1. Hanahan D, Weinberg RA. The hallmarks of cancer. *Cell* 2000;100:57–70.
2. Hanahan D, Weinberg RA. Hallmarks of cancer: the next generation. *Cell* 2011;144:646–74.
3. Hanahan D. Hallmarks of Cancer: New Dimensions. *Cancer Discov.* 2022 Jan;12(1):31-46.

# The Hallmarks of Cancer



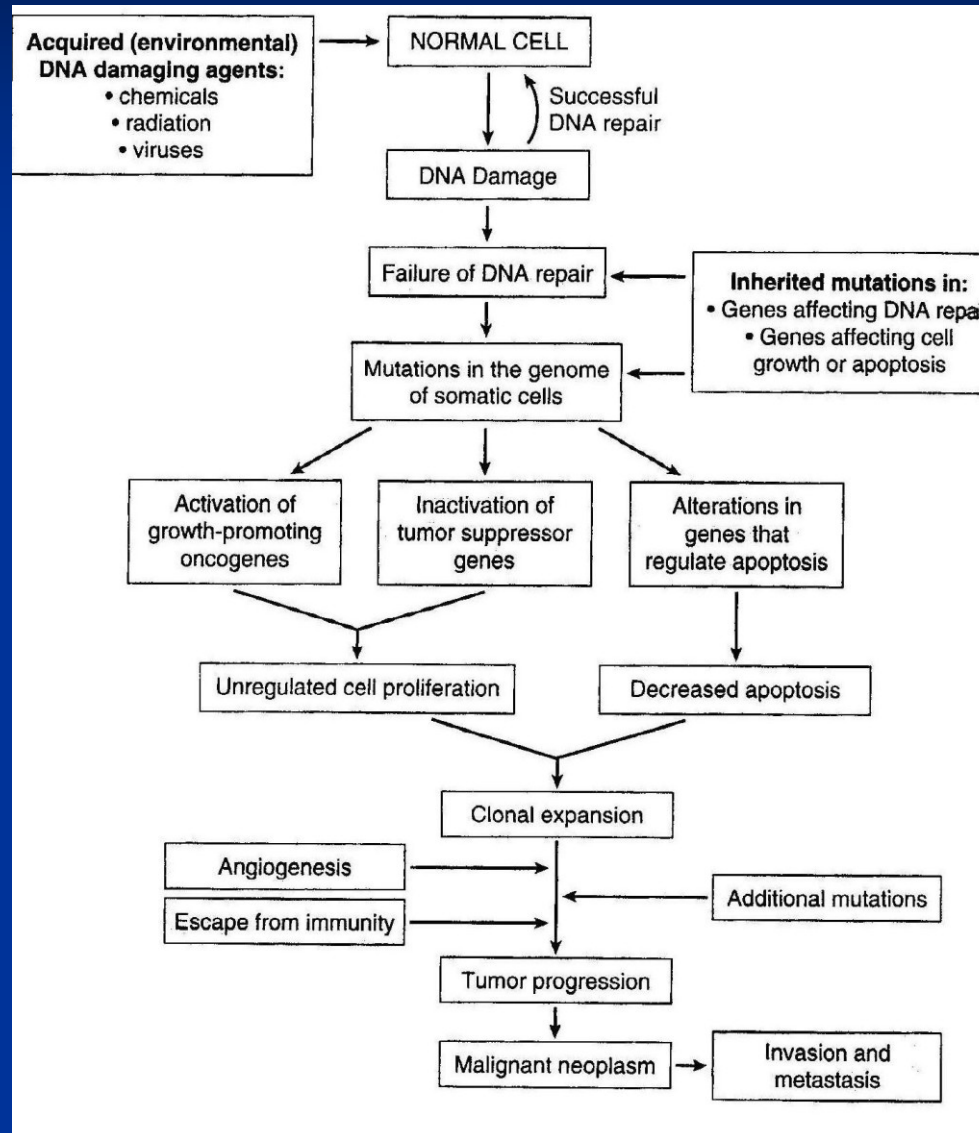
1. Hanahan D, Weinberg RA. The hallmarks of cancer. *Cell* 2000;100:57–70.
2. Hanahan D, Weinberg RA. Hallmarks of cancer: the next generation. *Cell* 2011;144:646–74.
3. Hanahan D. Hallmarks of Cancer: New Dimensions. *Cancer Discov.* 2022 Jan;12(1):31-46.

# Targets of genetic damage

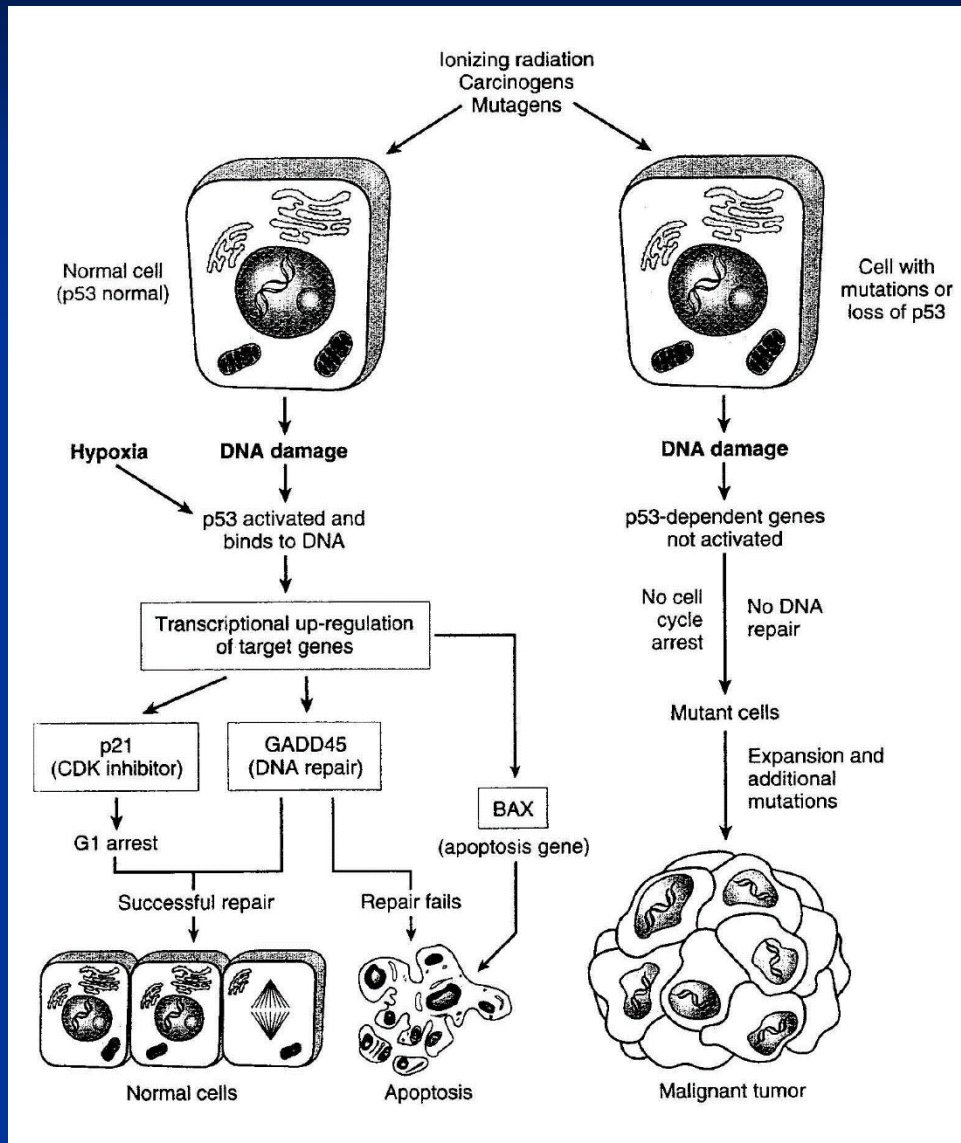
- The growth-promoting protooncogenes  
(dominant; support of cell proliferation)
- The growth-inhibiting tumor suppressor genes  
(recessive; inhibition of growth)
  - Gatekeepers (p53, RB)
  - Caretakers (genes involved in maintenance of genome integrity and DNA repair)
- Genes regulating the programmed cell death (apoptosis)
- Genes involved in DNA repair
- Oncogenic microRNA



# Molecular basis of cancer



# The role of tumor suppressor p53



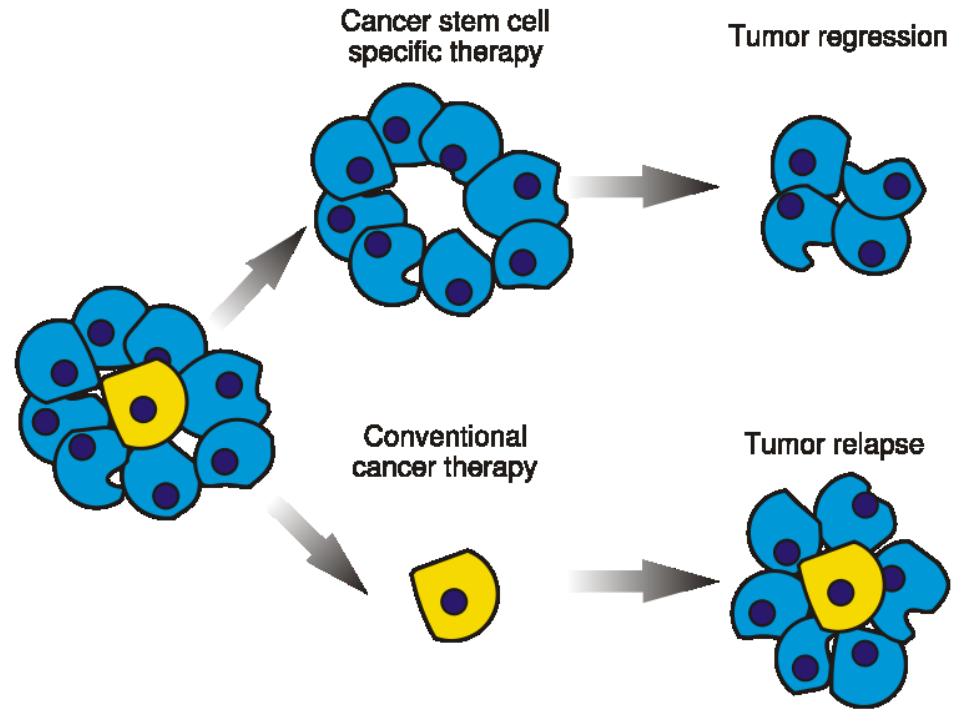
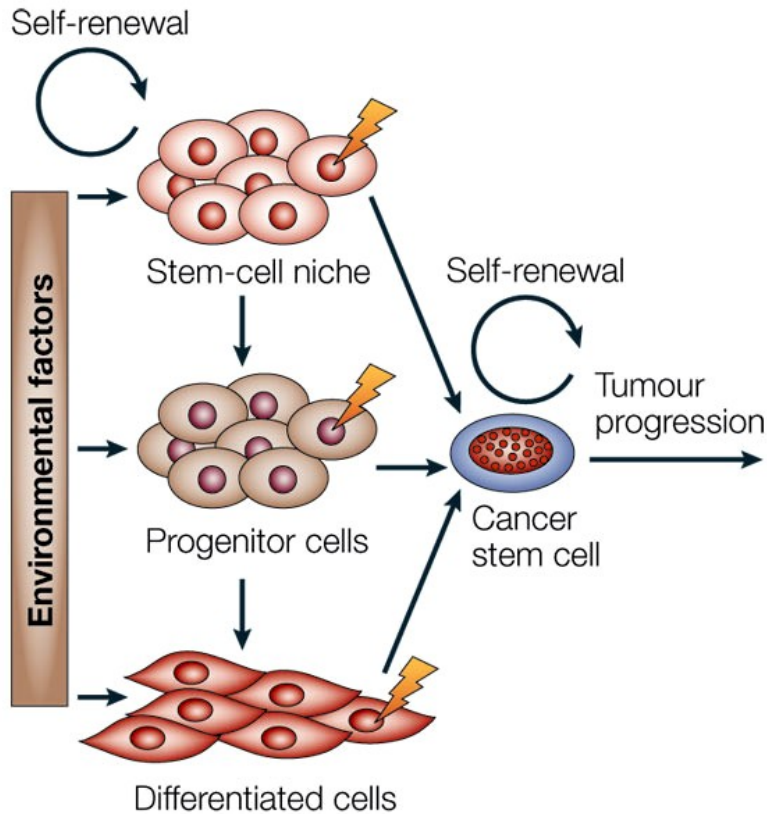
# Composition of tumors:

- **Parenchyma** (proliferating neoplastic cells)
- **Stroma** (connective tissue and blood vessels, source of mediators promoting the tumor growth and angiogenesis)
- (Cancer stem cells – tumor initiating cells)
  
- Cross-talk between stroma and parenchyma
- Tumors with abundant parenchyma: soft and fleshy
- Tumors with abundant collagenous stroma – with desmoplastic stroma: stony hard - scirrhous

# Cancer stem cells – tumor initiating cells

- subpopulation of tumor cells that possess self-renewal properties and are able to differentiate into multiple cell types providing various cell lines, which enable the progression of an incipient tumor
- resistant to conventional therapies
- a source of the tumor relapse after eradication of the bulk of the tumor
- oncological research focused in further understanding of CSCs and in the development of therapeutic strategies targeted at CSCs.

# Cancer stem cell theory



<b>Feature</b>	<b>Benign tumors</b>	<b>Malignant tumors</b>
<b>Growth rate</b>	slow	Relatively rapid
<b>Mitoses</b>	Infrequent	Frequent and often atypical
<b>Differentiation</b>	Good	Variable, often poor
<b>Nuclear morphology</b>	Often normal	Usually hyperchromatic, irregular outline, multiple nucleoli and pleomorphic
<b>Invasion</b>	No	Yes
<b>Metastases</b>	Never	Frequent
<b>Border</b>	Often circumscribed or encapsulated	Often poorly defined, irregular
<b>Necrosis</b>	Rare	Common
<b>Ulceration</b>	Rare	Common on skin and serous surfaces
<b>Growth on skin or mucosal surfaces</b>	Often exophytic	Often endophytic

# Classification of tumors (1):

## ■ Benign tumors

1. Suffix *-oma* (fibroma, chondroma, adenoma, papilloma, cystadenoma,...)
2. Well differentiated (usually organoid – structure of benign tumors with expressed morphological (and functional respectively) similarity of tissue of origin)
3. Usually encapsulated
4. Usually cohesive, expansively and slowly growing well-demarcated masses (surrounding tissue often with signs of pressure atrophy); usually easy surgical removal
5. Usually no invasion or infiltration of the surrounding tissue
6. No metastases

# Classification of tumors (2):

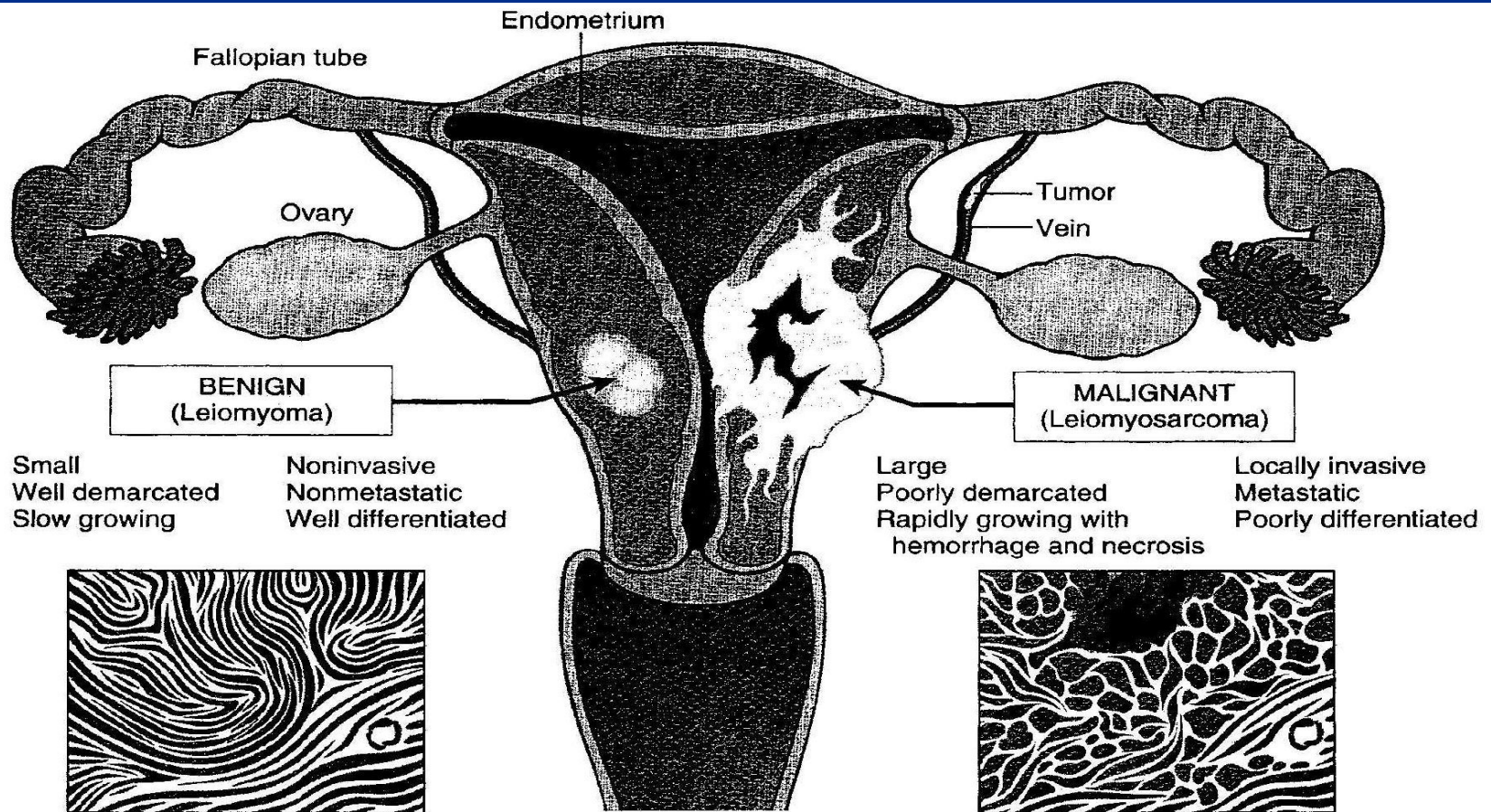
- **Malignant tumors (malignant epithelial tumors – carcinomas, malignant mesenchymal tumors – sarcomas,....)**
  1. Loss of differentiation (different levels-tumor well, moderately and poorly differentiated)
  2. Locally invasive, poorly demarcated, infiltrating the surrounding tissue
  3. Metastases (tumor implants discontinuous with the primary tumor)



# Semimalignant and potentially malignant tumors

- Different levels of loss of differentiation
- Tissue and cellular atypia
- Usually increased proliferation, atypical mitoses
- Invasive, poorly demarcated; sometimes partially expansively growing
- No metastases
- *Basalioma of the skin*
- Differentiated
- No tissue and cellular atypia
- No atypical mitoses
- Expansively growing, often encapsulated
- Sometimes metastases
- *Pleomorphic adenoma of salivary glands*

# Comparison between benign leiomyoma and malignant leiomyosarcoma



# Differentiation

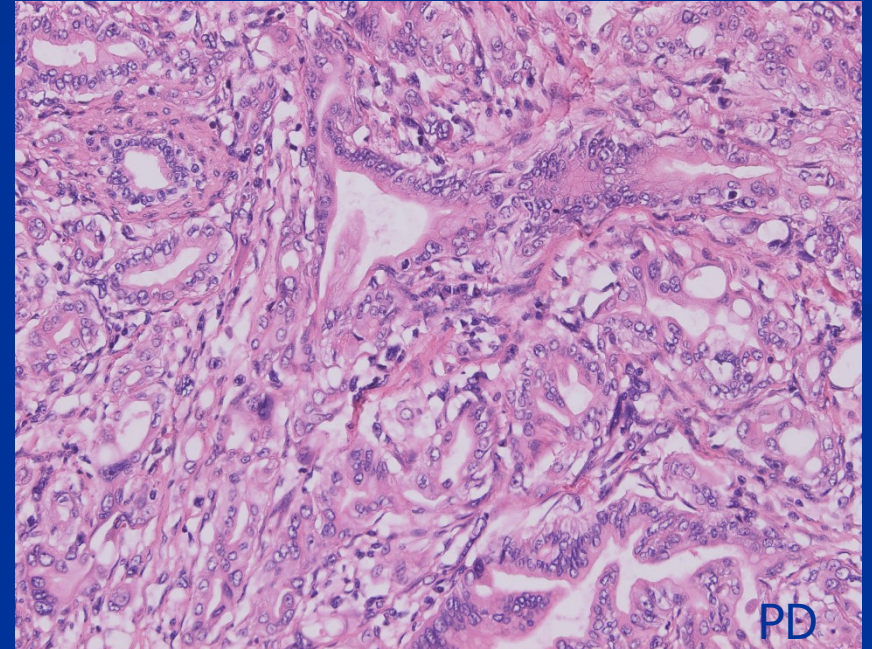
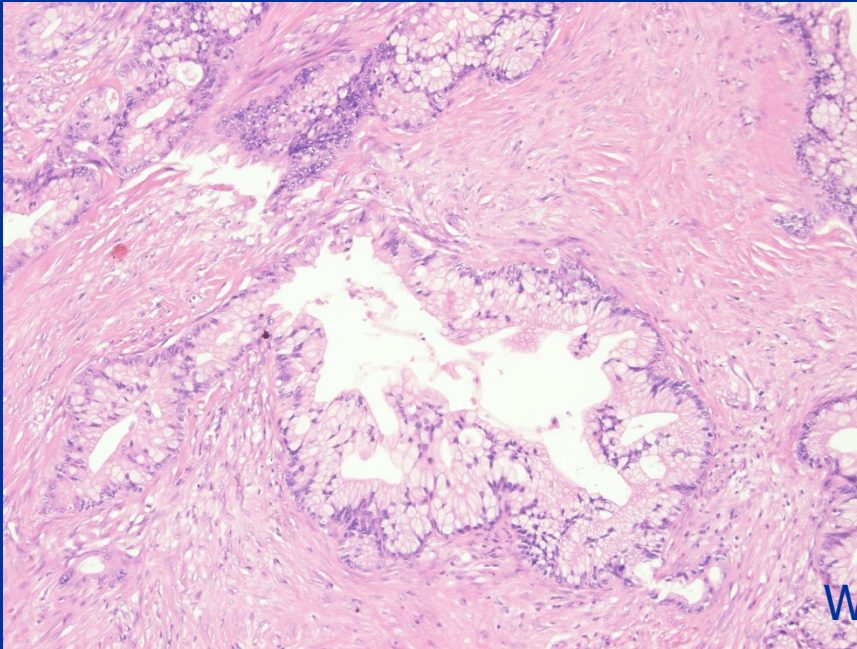
- The extent to which neoplastic cells resemble comparable normal cells, both morphologically and functionally
- Anaplasia: lack of differentiation (tumor parenchyma resembles the tissues of embryonal organs)
- Pleomorphism (variation of cells and nuclei in size and in shape)
- Increased size of nuclei
- Nuclear atypia (hyperchromasie due to the abundance of DNA, increased N/C ration (nucleus-to-cytoplasm ratio))
- Increased number and size of nucleoli
- Tumor giant cells
- Increased proliferation – mitoses (atypical, bizarre mitotic figures in malignant tumors)
- Loss of polarity
- Basophilic cytoplasm

# Grading of pancreatic ductal adenocarcinoma

Grade	Glandular structure	Mitoses (per 10 HPF)	Nuclear structure
Well differentiated (I)	<ul style="list-style-type: none"> <li>- well differentiated tubular or duct-like structures; mucin secreting columnar cells in single layers or papillary projections</li> <li>- desmoplastic stromal reaction</li> </ul>	<5	slight pleomorphism, small nucleolus
Moderately differentiated (II)	<ul style="list-style-type: none"> <li>- moderately differentiated ductal, tubular, microglandular, cribriform structures</li> <li>- irregular mucin production</li> </ul>	6-10	conspicuous pleomorphism and nucleoli
Poorly differentiated (III)	<ul style="list-style-type: none"> <li>- poorly differentiated glandular structures, mucoepidermoid and pleomorphic, undif. structures</li> <li>- abortive mucin production</li> </ul>	>10	pronounced pleomorphism, enlarged nuclei and prominent nucleoli

+ grade IV: undifferentiated tumor

# Well differentiated vs poorly differentiated pancreatic ductal adenocarcinoma



# Metastases

- Benign tumors do not metastasize
- Invasiveness of malignant tumor enables metastatic spreading
- Three pathways of metastatic spreading:
  1. Hematogenous spread
  2. Lymphatic spread (especially in carcinomas; sentinel lymph node)
  3. Direct seeding of body cavities or surfaces (implantation on serous surfaces (peritoneum, pleura, pericardium), on mucosal layers of tubular organs , within joint space, in subarachnoid space, ....)

# Genetic predisposition to cancer

- AD inherited cancer syndromes (inherited mutation in a single allele of a tumor suppressor gene; the second hit in somatic cells):
  1. *RB tumor suppressor gene* (childhood retinoblastoma)
  2. *APC tumor suppressor gene* (familial adenomatous polyposis)
  3. *p53 tumor suppressor gene* (Li-Fraumeni syndrome)(MEN 1, 2; NF1,2; p16; BRCA1, 2; VHL; Peutz-Jeghers sy,...)
  
- Defective DNA repair syndromes (AD)  
(hereditary nonpolypoid colon cancer (Lynch sy); *MSH2, MSH6, MLH1*)
  
- Familial cancer (breast, pancreas, ovary)
  
- AR inherited cancer syndromes (defective DNA repair, genetic instability; Fanconi anemia, ataxia teleangiectasia, xeroderma pigmentosum,...)
  
- Interactions between genetic and epi-genetic factors

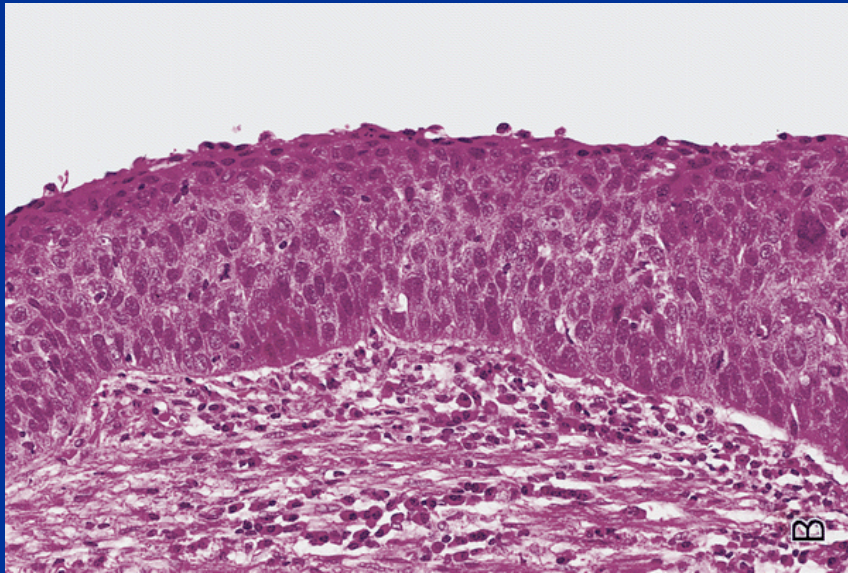
# Nonhereditary predisposing conditions

- Chronic inflammation and cancer
- Precancerous conditions/premalignant lesions (dysplasia/intraepithelial neoplasia)
  - Adenomatous polyps of colon
  - CIN, VIN, EIN, PanIN, PIN,
  - Atypical ductal or lobular hyperplasia

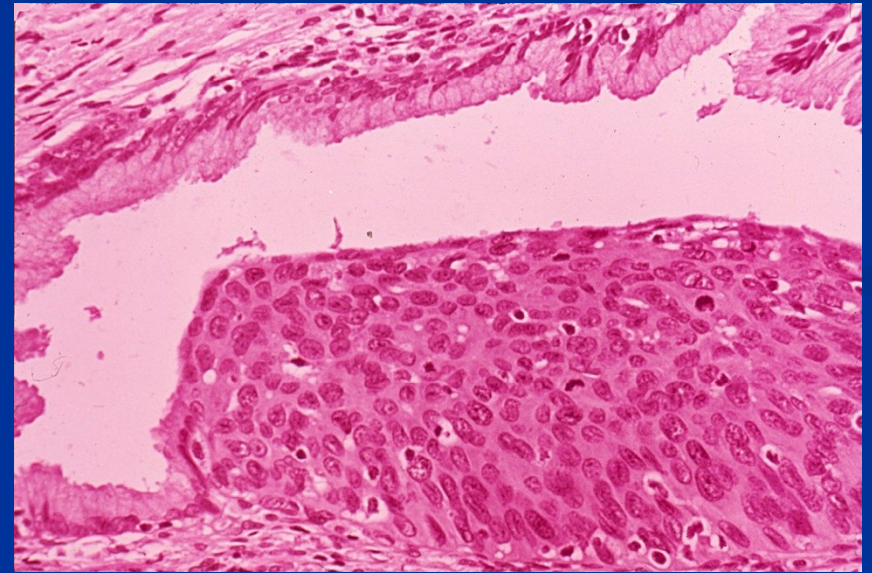


# Dysplasia

- In epithelia
- A loss of uniformity of the individual cells as well as loss in their architectural orientation
- Low grade vs high grade dysplasia
  - most low grade dysplasias do not progress into invasive carcinoma
  - high risk of progression into invasive carcinoma in high grade dysplasia
- Intraepithelial neoplasia/dysplasia
- Dysplastic changes can involve the entire thickness of the epithelium – preinvasive neoplasm – *carcinoma in situ*



**Carcinoma in situ**



**Cervical intraepithelial neoplasia grade III/  
CIN III = high grade**

# The role of inflammation in carcinogenesis

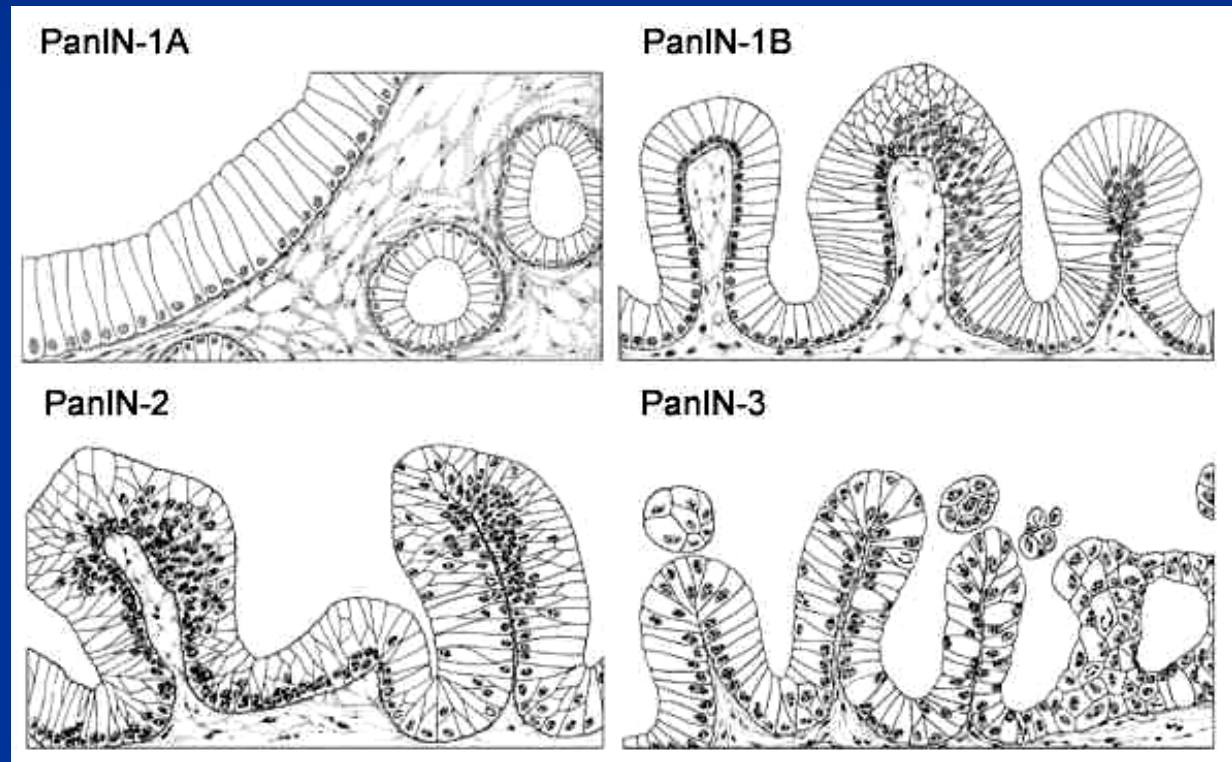
- production of reactive oxygen species (ROS), cytokine release, and upregulation of pro-inflammatory transcription factors
- Mediators of the inflammatory pathways (e.g., NF- $\kappa$ B, COX-2, 5-LOX, IL-8,...):
  - induce genetic damage
  - promote cell proliferation
  - inhibit apoptosis
  - regulate the tumor associated angiogenesis

# Relationship between inflammation and cancer.

- IBD – colorectal cancer
- *Helicobacter pylori* chronic gastritis – gastric cancer
- chronic viral hepatitis – hepatocellular carcinoma
- esophagitis (Barret's esophagus) – esophageal carcinoma
- liver fluke infection – cholangiocellular carcinoma
- chronic pancreatitis – pancreatic cancer

**Pancreatic intraepithelial neoplasms (PanIN):  
microscopic precursor of pancreatic ductal adenocarcinoma.  
PanIN 1A, 1B, 2 = low grade, PanIN3 = high grade**

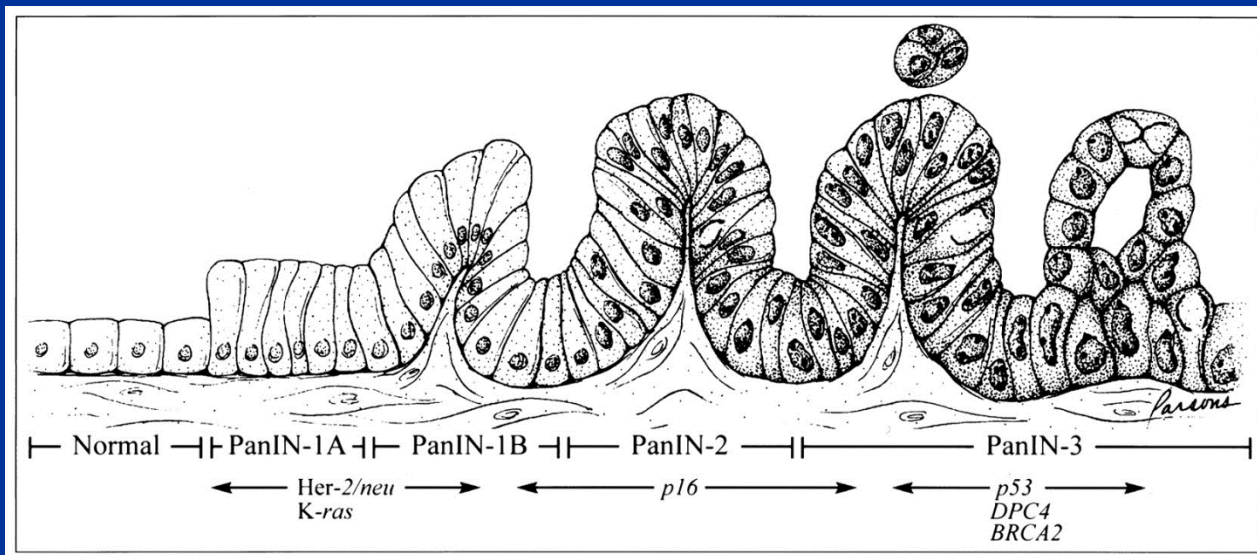
- PanIN-1A
- PanIN-1B
- PanIN-2
- PanIN-3



PanIN: non-invasive intraductal epithelial proliferation

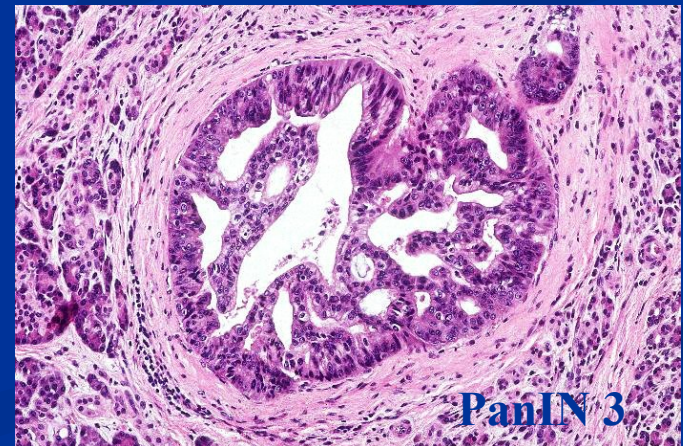
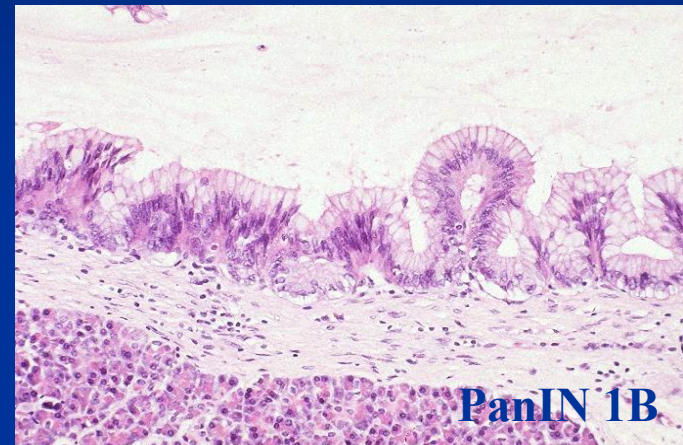
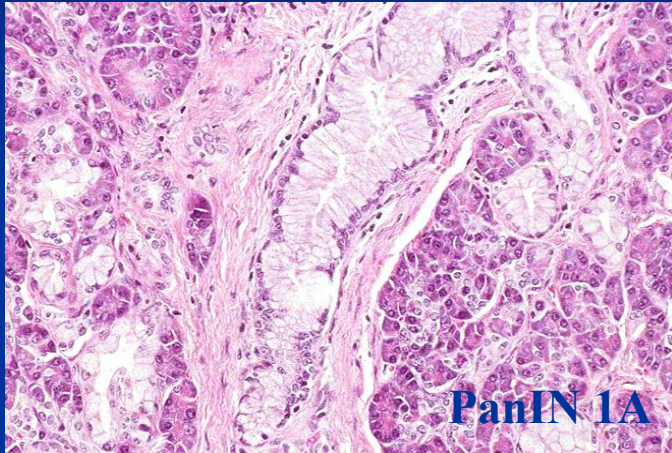
# Oncogenesis of pancreatic ductal adenocarcinoma: current accepted linear model of progression.

- Activation of oncogenes  
*KRAS, MYB, AKT2, AIB1*
- Inactivation of tumor suppressor genes  
*p16, TP53, DPC4, BRCA2, LKB1/STK11*
- DNA Mismatch Repair  
*MSH2, MLH1,....*
- Epigenetic alterations, dysregulation of oncoproteins, activation of Hedgehog and Notch signalling pathways



Hruban et al. Progression model of pancreatic cancer. Clin Cancer Res 2000; 6: 2969-2972.

# PanIN lesions: low grade vs high grade



# Histogenetic classification of tumors

- Epithelial tumors
- Mesenchymal tumors
- Neuroectodermal tumors
- Embryonal tumours  
(germ cell tumors + organ specific (hepatoblastoma, pancreatoblastoma, nephroblastoma,...))
- Mixed tumors



# Principal characteristics of carcinomas and sarcomas

Feature	Carcinoma	Sarcoma
Origin	Epithelium	Connective/mesenchymal tissue
Behaviour	Malignant	Malignant
Frequency	Common	Relatively rare
Preferred route of metastasis	Lymph (into lymph nodes)	Blood (into liver, bones, brain,.....)
In situ phase	Yes	No
Age group	Usually over 50 years	Usually bellow 50 years

# Epithelial tumours

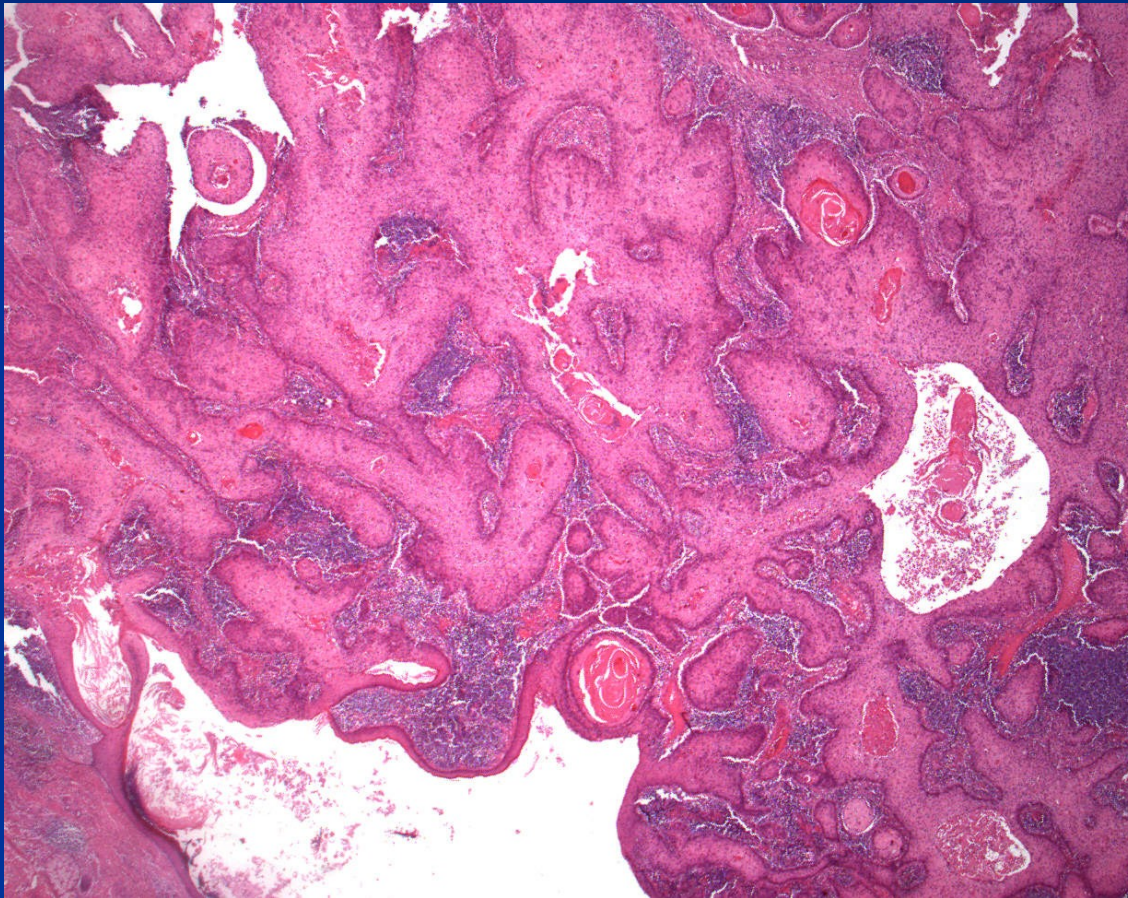
- From superficial epithelium  
(papilloma/carcinoma)
- From glandular epithelium  
(adenoma/adenocarcinoma)
- From specialized organs  
(adenoma/adenocarcinoma)...liver, kindey, adrenal gland

# Epithelial tumors

Epithelium	Benign	Malignant
Squamous	Squamous cell papilloma	Squamous cell carcinoma
Transitional	Transitional cell papilloma	Transitional cell carcinoma
Basal cell	Basal cell papilloma	Basal cell carcinoma
Glandular	Adenoma	Adenocarcinoma

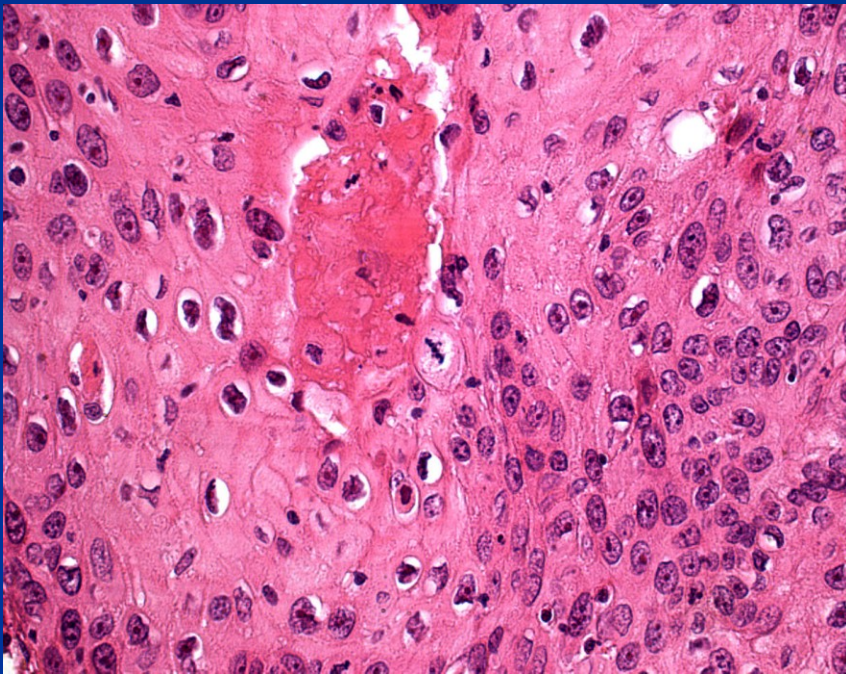
# Squamous cell carcinoma

(skin, oral cavity, oesophagus,...lung (squamous metaplasia))

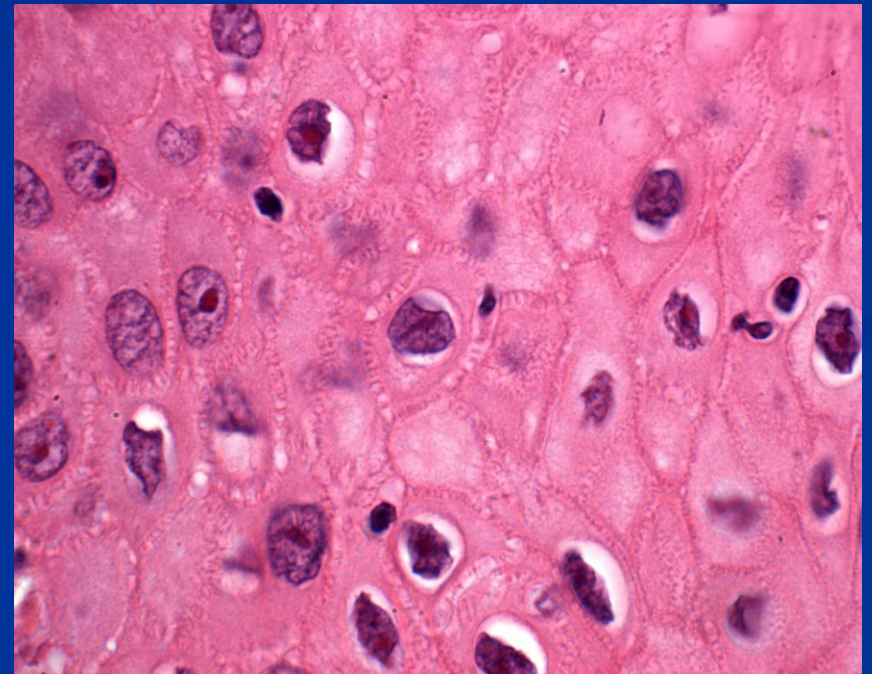


Squamous cell carcinoma

# Squamous cell carcinoma

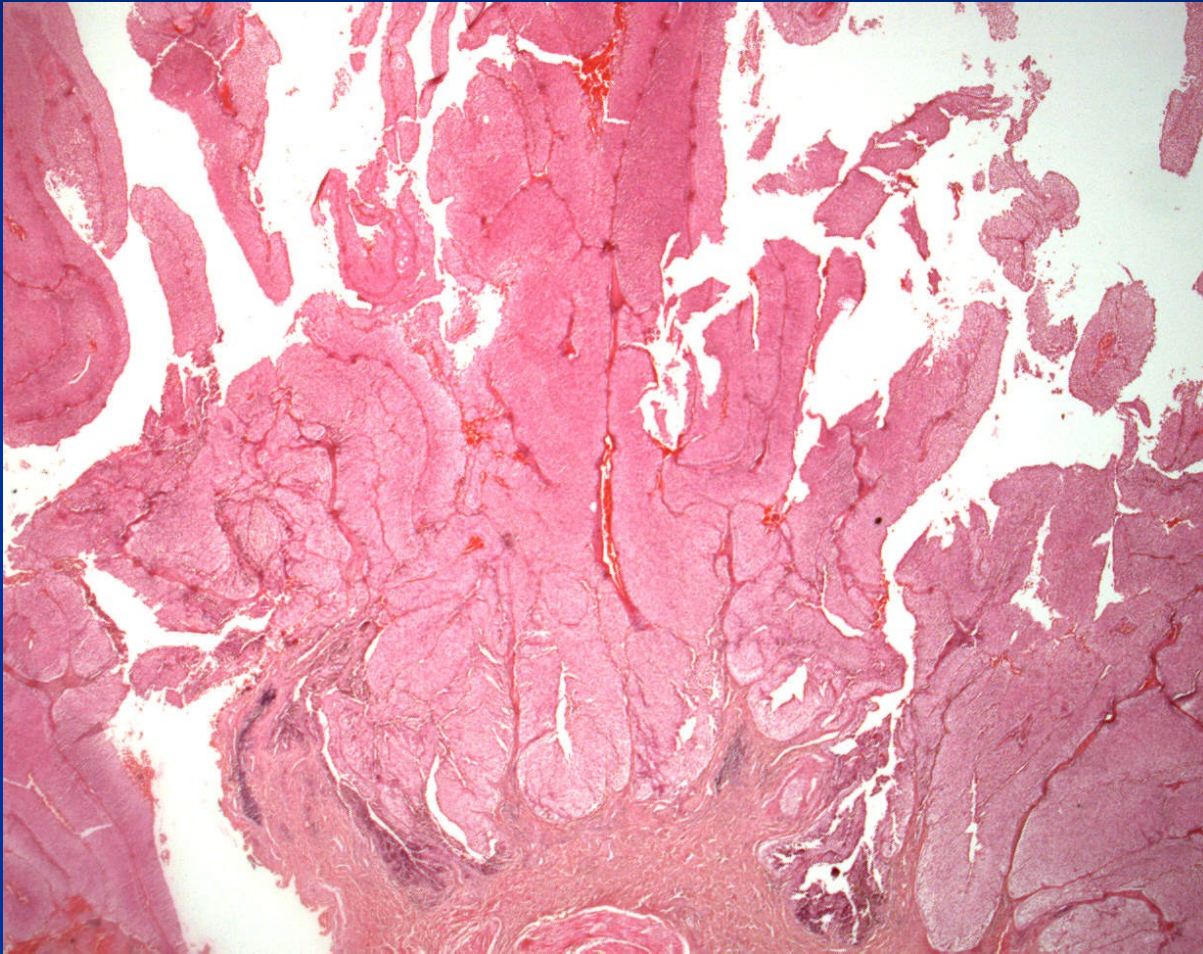


Keratinisation, mitoses in SCC

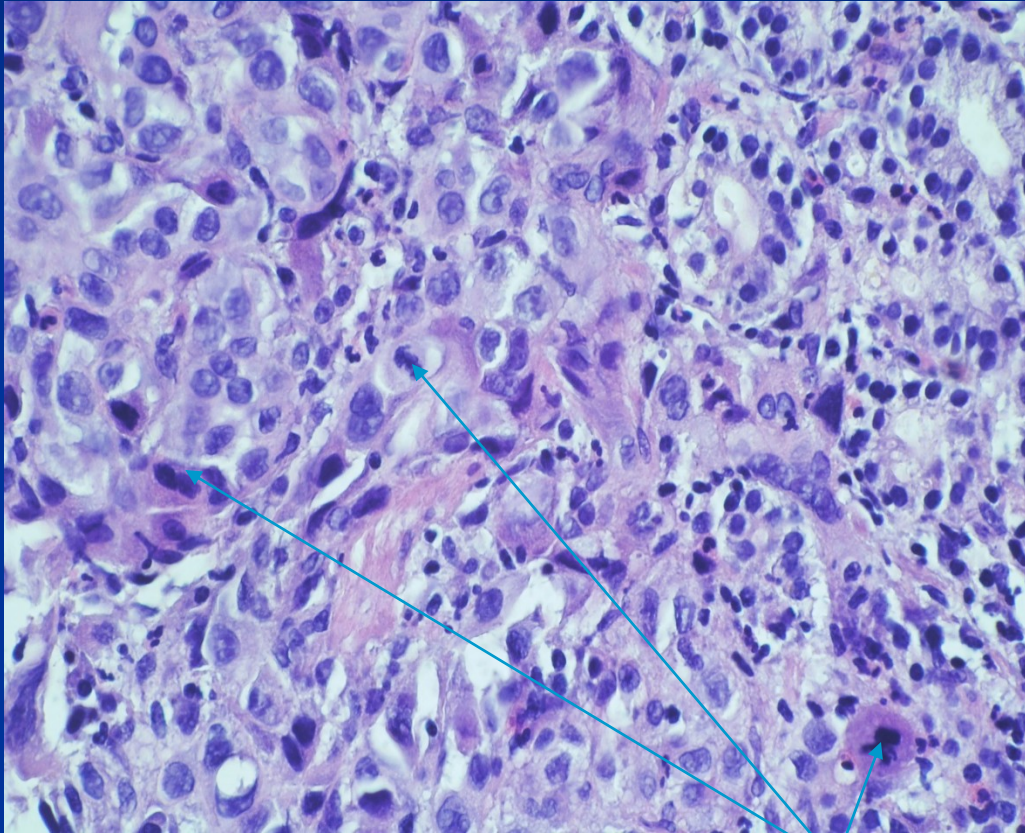


Intercellular bridges- tonofilaments

# Papillocarcinoma – urinary bladder



# Poorly differentiated carcinoma



High mitotic count

Immunohistochemistry in diagnostics of poorly differentiated tumours, tumours of unknown origin, ..

Markers of epithelial tissue: cytokeratins, EMA, CEA, ....

Pleomorfism, anizocytosis, anizonucleosis, hyperchromasia, prominent nucleoli, ....

# Adenoma – benign tumour – glandular epithelium

Adenomatous polyps of colon and rectum - adenomas:

- tubular
  - vilous
  - tubulovillous
- 
- acinar (salivary glands)
  - follicular (thyroid gland)
  - solid (liver, adrenal gland)
  - cystadenoma (ovarium): uniloculare, multiloculare; papilliferum, evertens)
  - oncocytic - oncocytoma

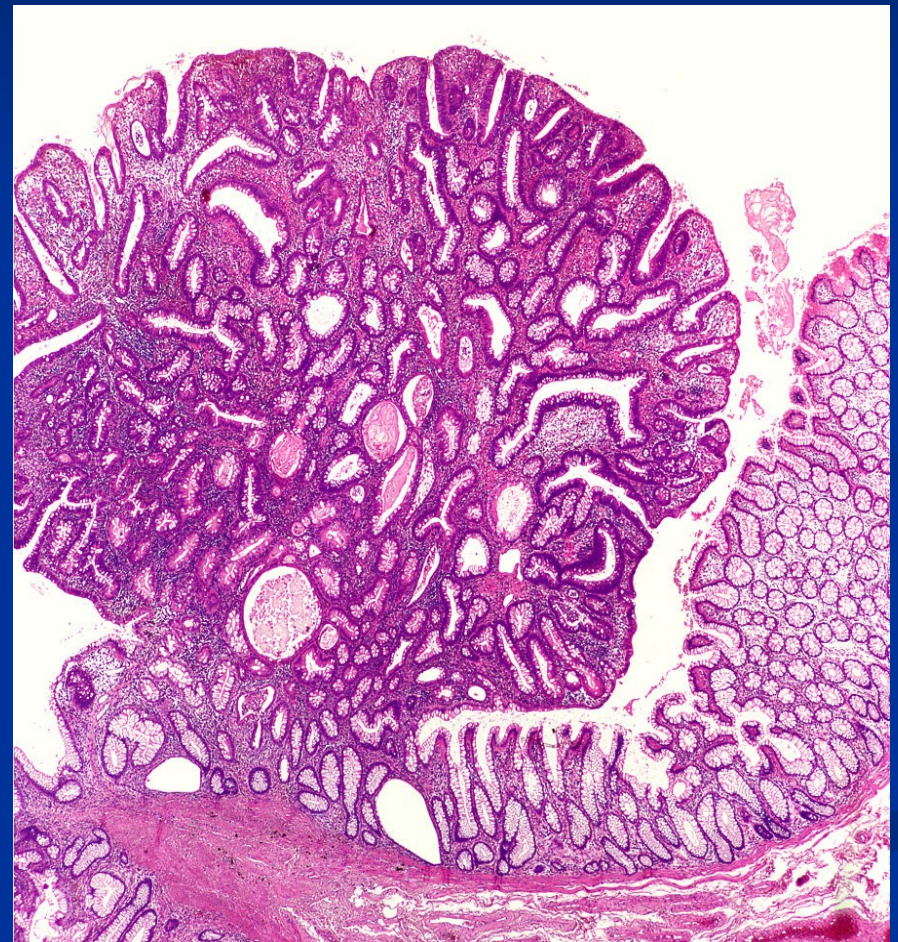


# Adenomatous polyp – tubular adenoma

Multiple adenomatous polyps in familial adenomatous polyposis (AD; *APC* gene)

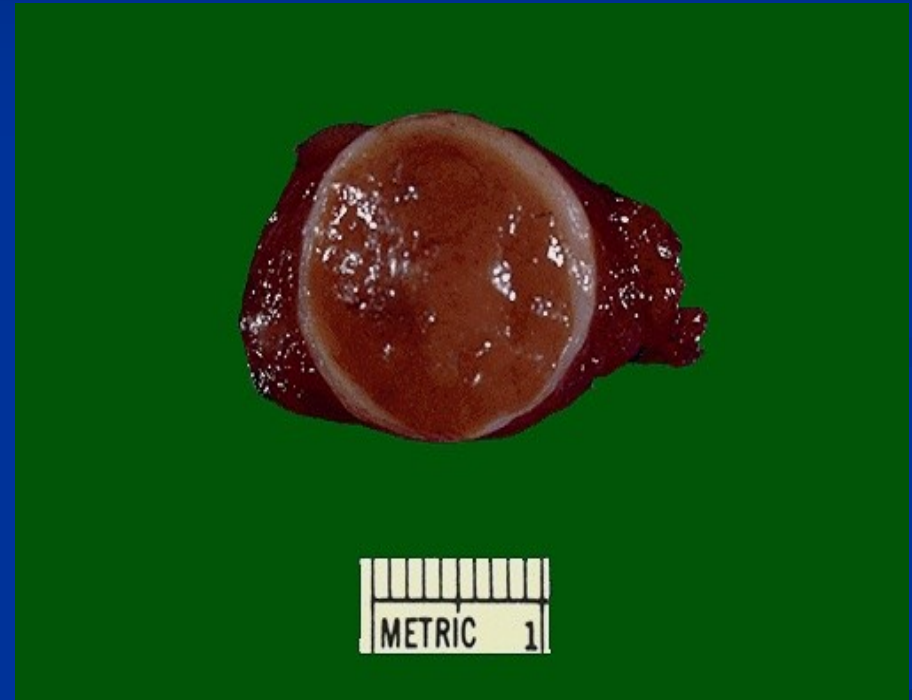
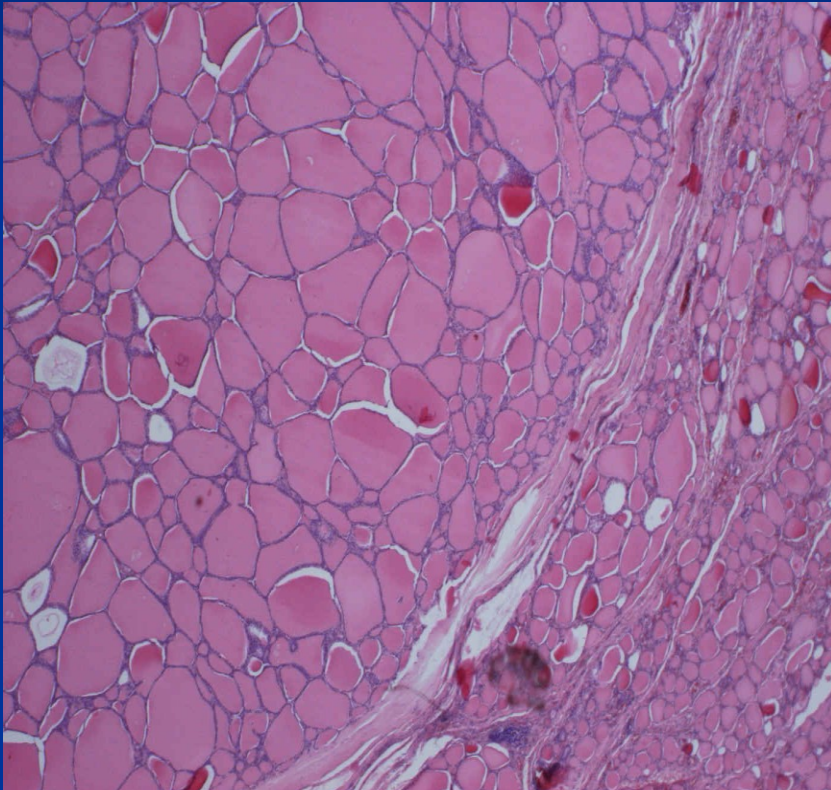


Adenomatous polyps of large intestine



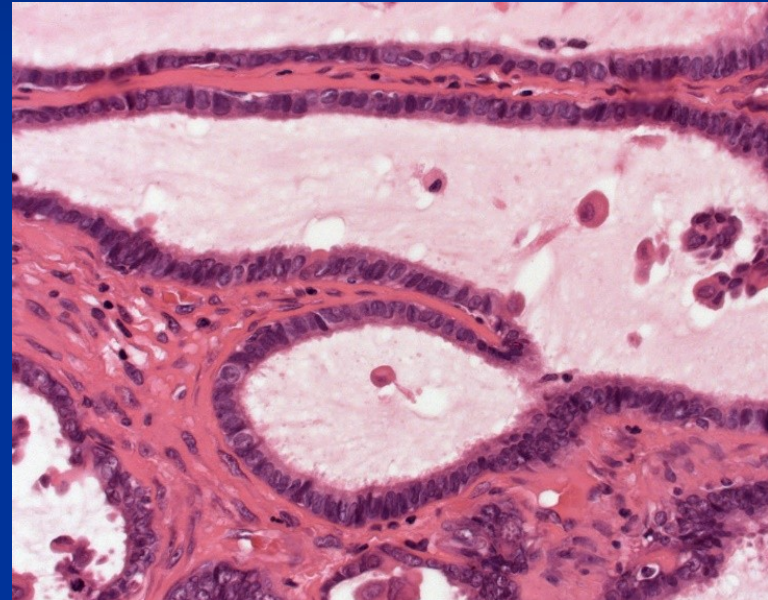
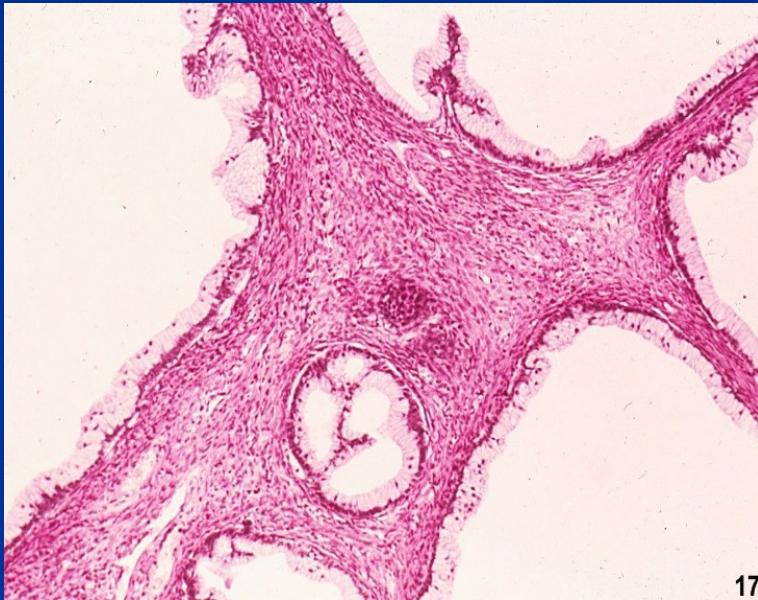
Tubular adenoma, low grade dysplasia

# Follicular adenoma - thyroid

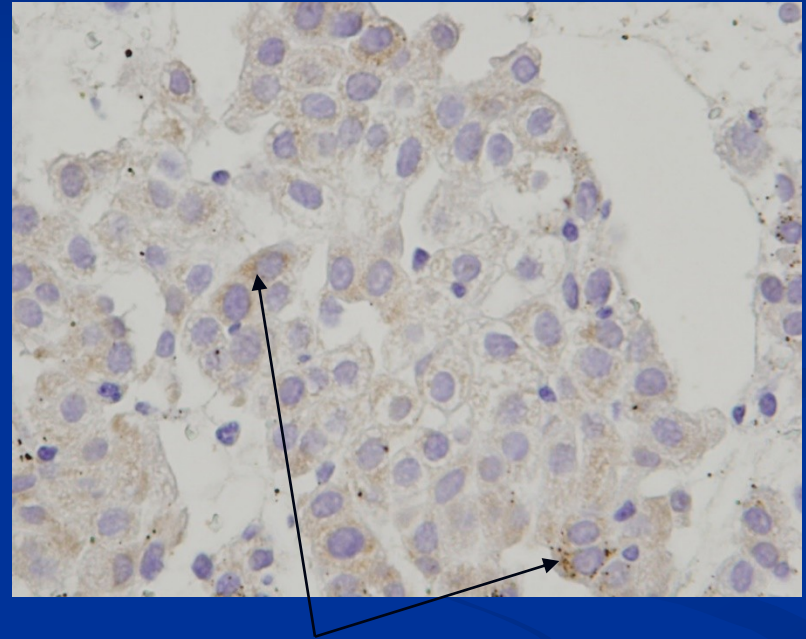
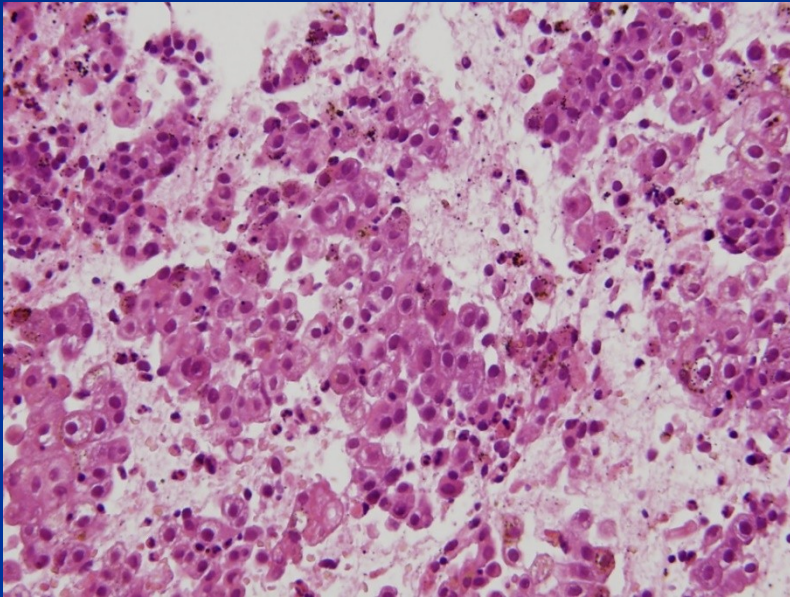


# Cystadenoma – ovary

## Mucinous versus serous



# Oncocytoma



Expression of mitochondrial antigen - immunohistochemistry

# Adenocarcinoma

(malignant, from glandular epithelium)

- **Medullary** (parenchyma > stroma)
- **Scirhotic** (↑desmoplastic stroma)

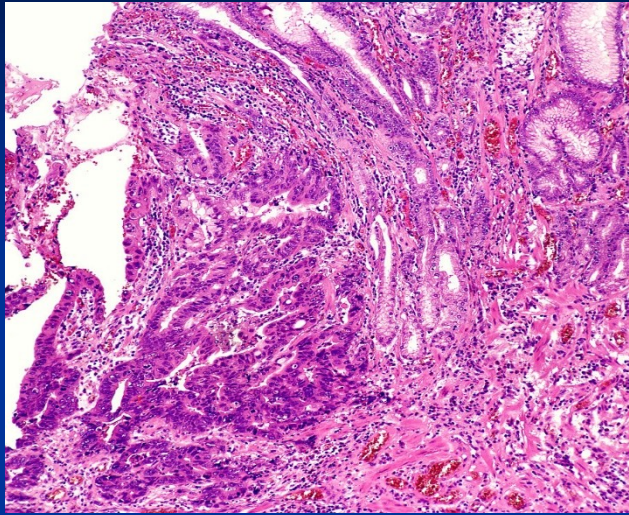
## **Adenocarcinoma - GIT (colorectal, stomach, .....):**

- Intestinal type
- Diffuse (scirhotic)
- Mucinous, gelatinous

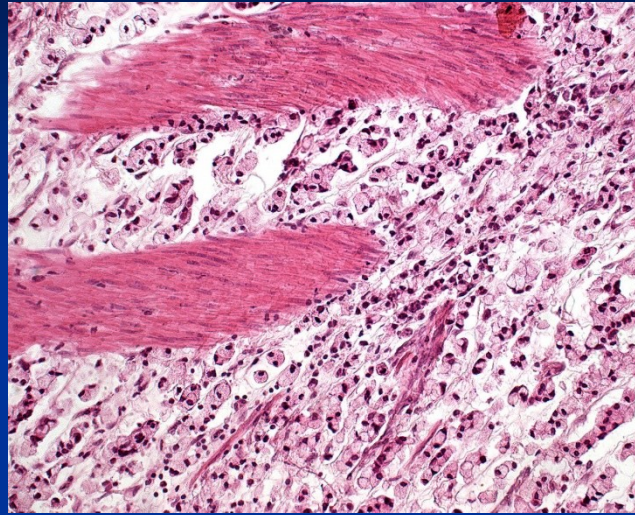
Hepatocellular carcinoma (trabecular)

Adenoid cystic carcinoma (salivary gland, respiratory tract)

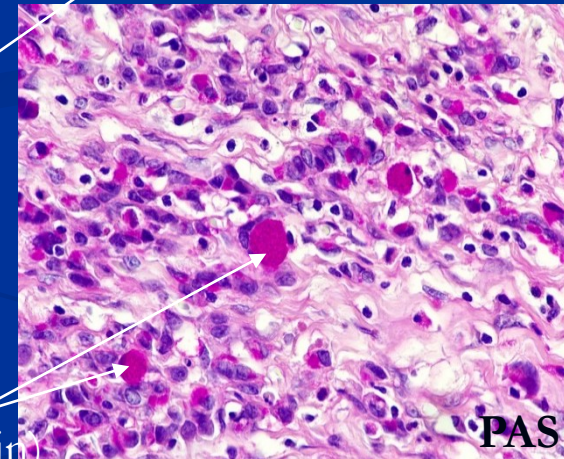
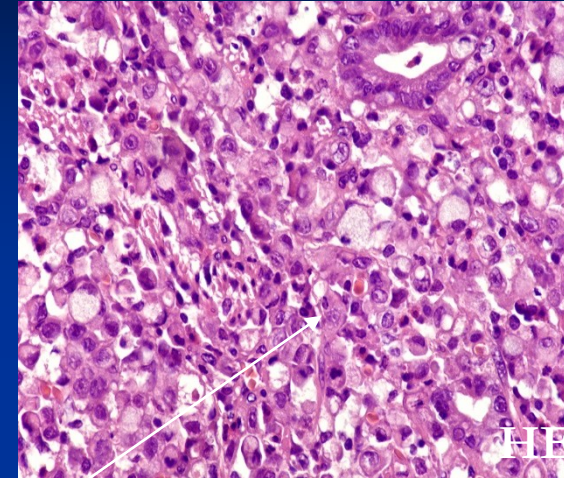
Carcinomas of glands of mesodermal origin (renal cel carcinoma)



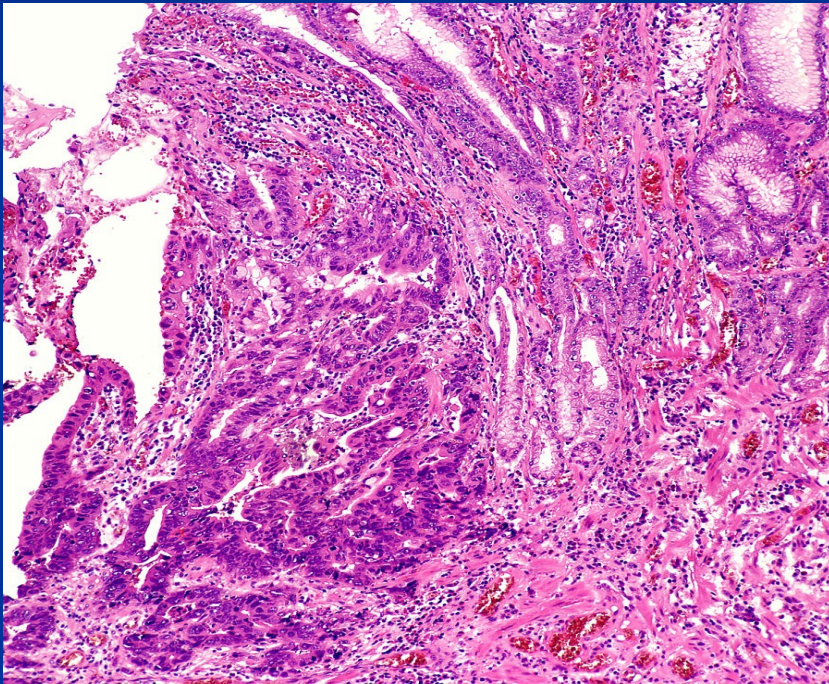
Adenocarcinoma, intestinal type



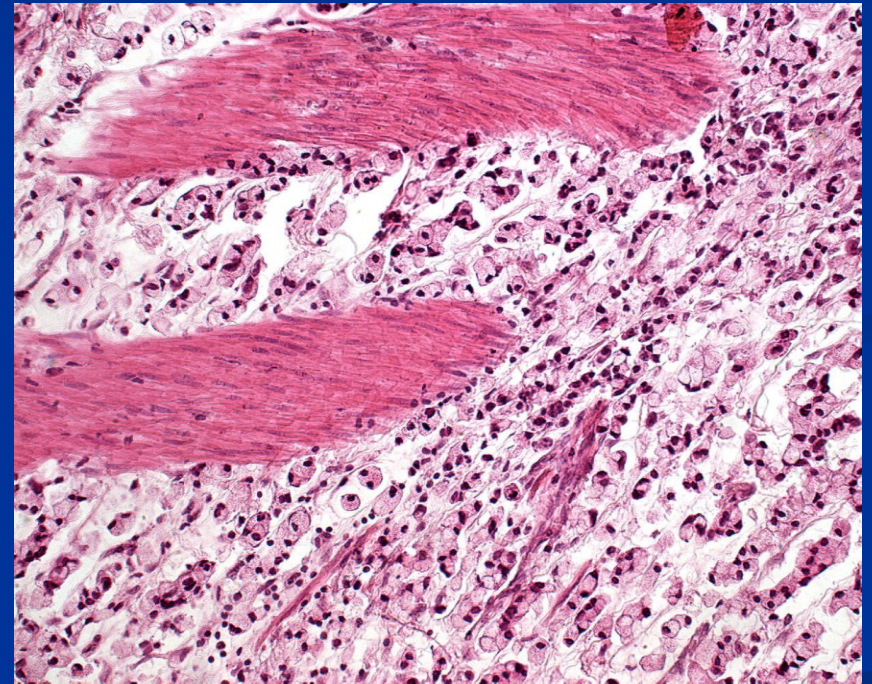
Adenocarcinoma – gelatinous, mucinous



Diffuse adenocarcinoma; with signet ring cells (PAS+ mucin)



Adenocarcinoma, intestinal type



Adenocarcinoma – gelatinous, mucinous

# Neuroendocrine neoplasia (NEN)

## ■ Definition

NENs are epithelial or neuroectodermal neoplasias defined by the presence of small or large vesicular granules containing proteins with hormonal or neural effects, expressing markers of membrane proteins localized on small „synaptic“ vesicles (synaptophysin) or large „hormonal“ granules “ (chromogranin A)



# Neuroendocrine neoplasia (NEN) (carcinoid tumours)

- Spectrum of tumours from well differentiated neuroendocrine tumours (previously called carcinoids) to poorly differentiated neoplasms with neuroendocrine features (small and large cell neuroendocrine carcinoma)

**Localisation:** GIT, respiratory tract,... (derived from neuroendocrine cells in this organs)

- **Neuroendocrine differentiation** (neurosecretory granules: chromogranin+, synaptophysin+ ...detected by immunohistochemistry)

- **Associated paraneoplastic syndromas**

- **carcinoid syndrome- serotonin**

(skin flushing, abdominal pain, diarrhea, difficulty breathing, rapid heart rate, low blood pressure, skin lesions on the face (telangiectasias), and wheezing, fibrosis of tricuspidal and pulmonary valves)

- **Cushing syndrome – ACTH**

- **syndrome of inappropriate antidiuretic hormone (SIADH) secretion**

- **Eaton-Lambert syndrome**

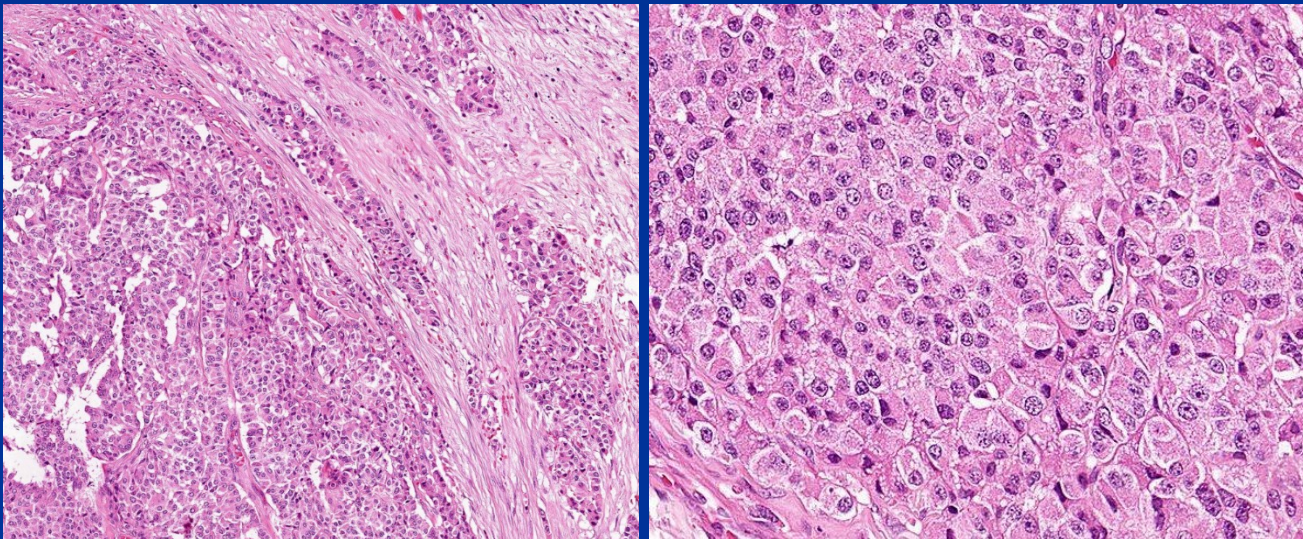
(autoimmune myastenic disorder characterized by muscle weakness of the limbs, antibodies against presynaptic voltage-gated calcium channels)

# Neuroendocrine tumour (NET)

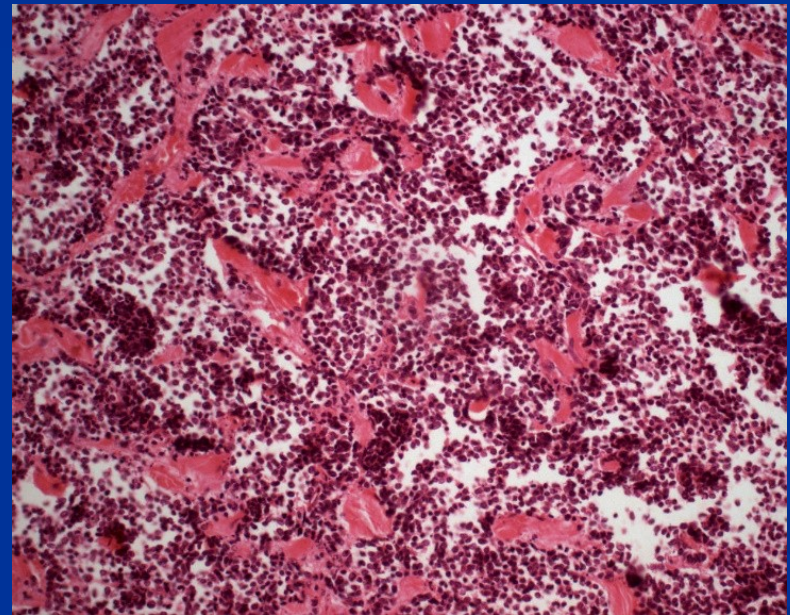
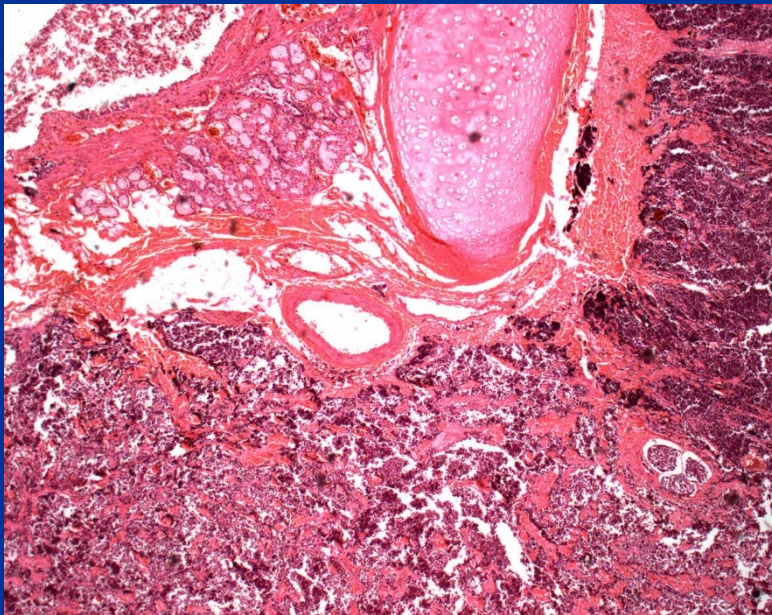
## Neuroendocrine carcinoma (NEC)

- **Neuroendocrine tumor - NET G1/G2/G3**  
well differentiated neuroendocrine tumor  
low grade (G1/G2) and high grade (G3)  
(previously called carcinoids and atypical, malignant carcinoids)
- **Neuroendocrine carcinoma - NEC (G3)**  
poorly differentiated neuroendocrine neoplasm  
neuroendocrine carcinomas, high grade malignant tumors
  - Small cell neuroendocrine carcinoma
  - Large cell neuroendocrine carcinoma
- **Mixed neuroendocrine noneuroendocrine neoplasm (MiNEN)**
- (previously called MANEC)

**Well differentiated neuroendocrine neoplasia**  
**Neuroendocrine tumour – NET (previously carcinoid)**



**Poorly differentiated neuroendocrine neoplasm**  
**Neuroendocrine carcinoma (NEC)**  
**Small cell neuroendocrine carcinoma**



# Mesenchymal tumors

Tissue of origin	Benign	Malignant
Smooth muscle	Leiomyoma	Leiomyosarcoma
Striated muscle	Rhabdomyoma	Rhabdomyosarcoma
Adipose tissue	Lipoma	Liposarcoma
Blood vessels	Angioma	Angiosarcoma
Bone	Osteoma	Osteosarcoma
Cartilage	Chondroma	Chondrosarcoma

# Germ cell tumors

- Derived from germ cells
- Somatic differentiation (teratomas – mature, immature)
- Extrasomatic differentiation (chorioncarcinoma, yolk sack tumor)
- testis, ovary + extragonadal germ cell tumors in mediastinum, retroperitoneum, epiphyseal region , sacrococcygeal localisation,...
- Precursor lesion of testicular germ cell tumours: germ cell neoplasia in situ (GCNIS)

# Histogenesis of germ cell tumors

Differentiation of primitive cell along the gonadal line  
(gonocyte, spermatogonia), without developed differentiation potencies  
- **Seminoma**

**Primitive germ cell of origin**

**Totipotent cell**

Undifferentiated cell  
- **Embryonal carcinoma**

Extraembryonally differentiated  
- **Yolk sack tumor**  
- **Chorioncarcinoma**

Intraembryonally differentiated  
**Teratoma** (mature, immature, with malignant transformation of somatic elements)  
- **(Polyembryoma)**

■ **Germ cell tumor of a single histological type (pure forms)**

- Seminoma/dysgerminoma

Non-seminomatous germ cell tumour:

- Embryonal carcinoma
- Yolk sack tumor
- Polyembryoma
- Chorioncarcinoma
- Teratoma
  - differentiated mature
  - differentiated immature
  - with malignant transformation – with somatic type malignancy

■ **Mixed germ cell tumor** (40 %)

- *Oncomarkers*: aFP, hCG, hPL, PLAP, CEA, LDH (detection in serum and/or tissues; diagnostics and monitoring of patients during/after a treatment)



## Germ cell tumors characteristics

tumor	age	structure	oncomarker
Seminoma	40-50	Solid, polygonal clear cells, stromal lymphocytic infiltration.	10 % hCG
Embryonal carcinoma	20-30	Undifferentiated, pleiomorphic cells in sheets, solid, tubullary and papillary; necroses	90 % hCG and/or aFP
Yolk sack tumor	3	Poorly differentiated cells, broad spectrum arrangement of cuboidal and columnar cells, glomeruloid formation	90 % aFP
Chorioncarcinoma	20-30	Cytotrophoblast and syncytiotrophoblast without villous formation, haemorrhage, necroses	100 % hCG
Teratoma	*	Tissues of 3 germ layers in various stage of differentiation	50 % hCG and/or aFP
Mixed tumors	15-30	Variable presence of different components; e. g. teratoma+embryonal carcinoma	90 % hCG and/or aFP

\* Prepubertal and postpubertal type (often within mixed germ cell tumor)

# Classification of testicular germ cell tumours

## Germ cell tumours derived from GCNIS

(aggressive, oncological therapy)

### Tumours of a single histological type (pure forms)

Seminoma

Non-seminomatous germ cell tumours

- Embryonal carcinoma
- Yolk sack tumours, postpubertal type
- Choriocarcinoma
- Teratoma, postpubertal type

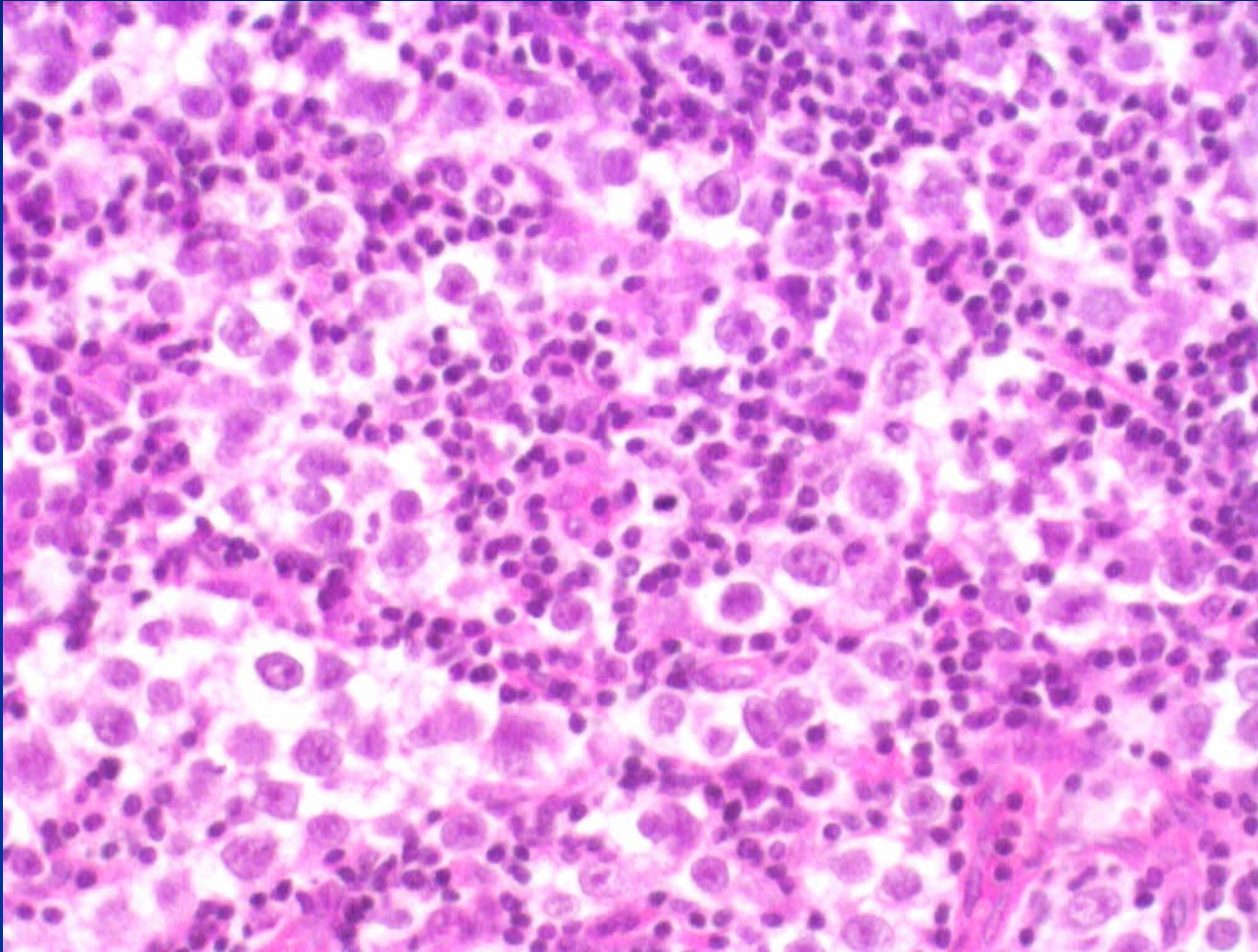
### Mixed germ cell tumours (of more than one histological type)

## Germ cell tumours unrelated to GCNIS

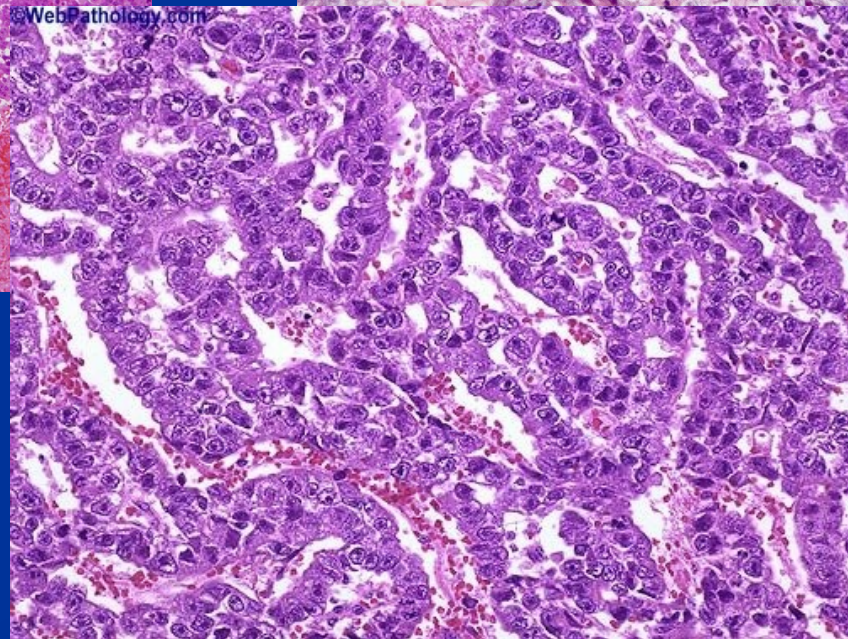
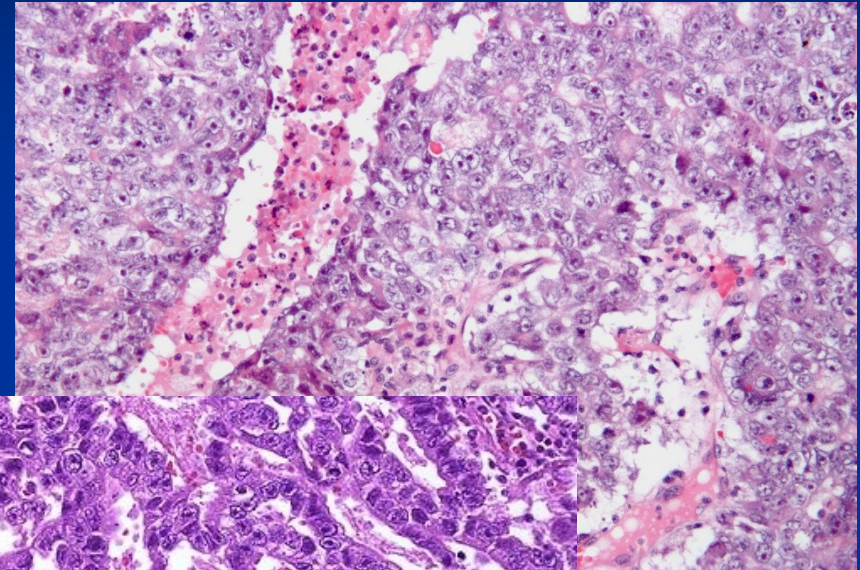
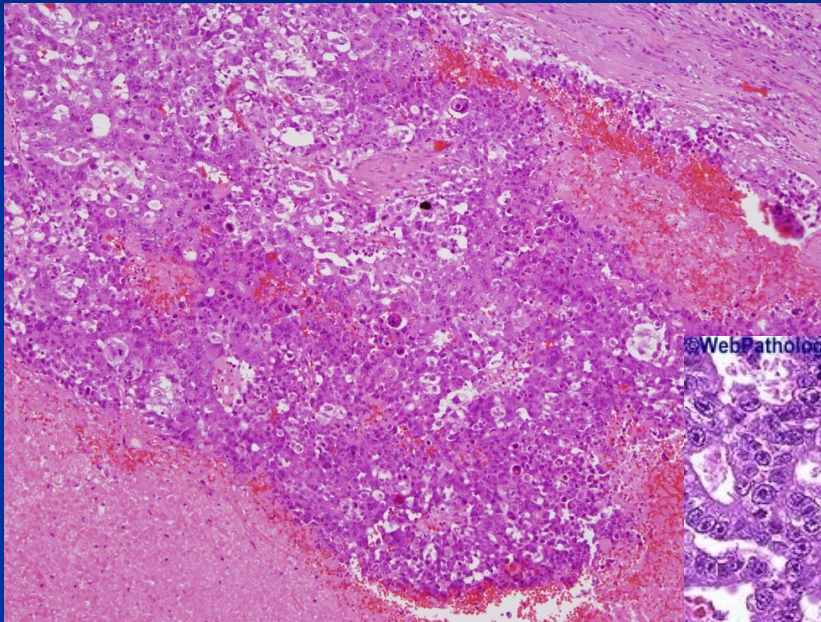
(biologically favourable)

- Spermatocytic seminoma (older men, locally aggressive, nonmetastatic)
- Teratoma – prepubertal type
- Yolk sack tumour – prepubertal type
- Mixed teratoma and yolk sack tumour – prepubertal type

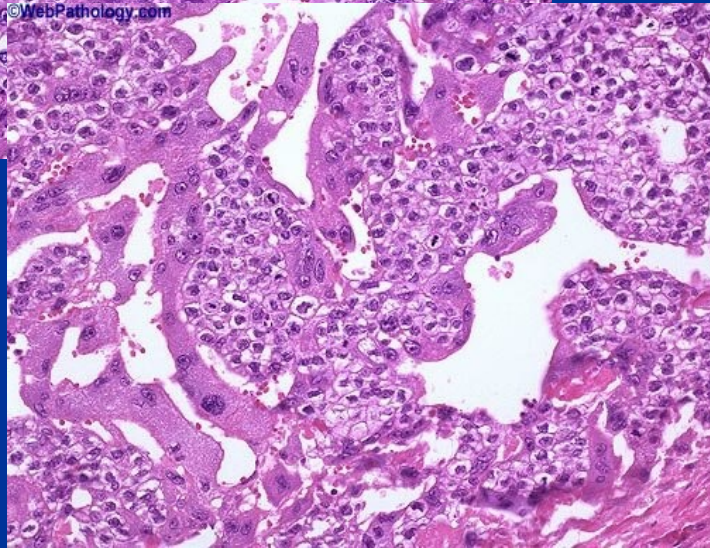
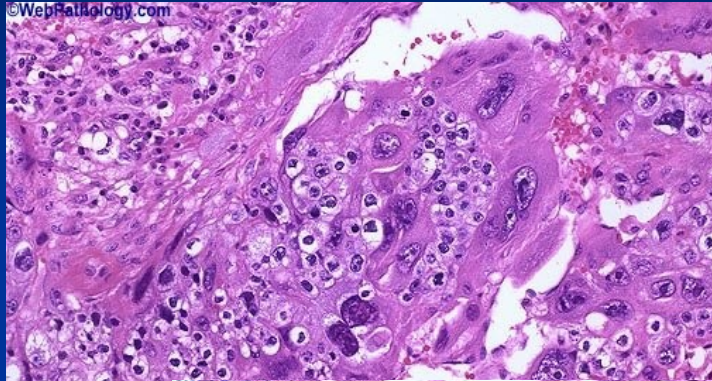
# Seminoma



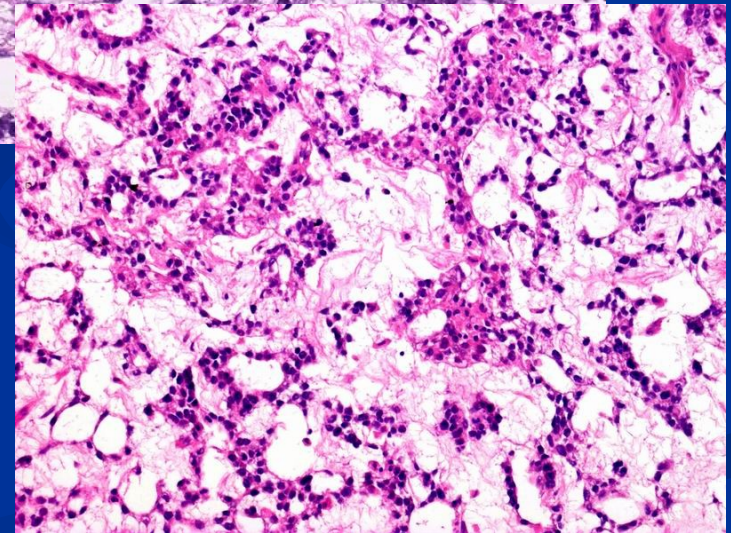
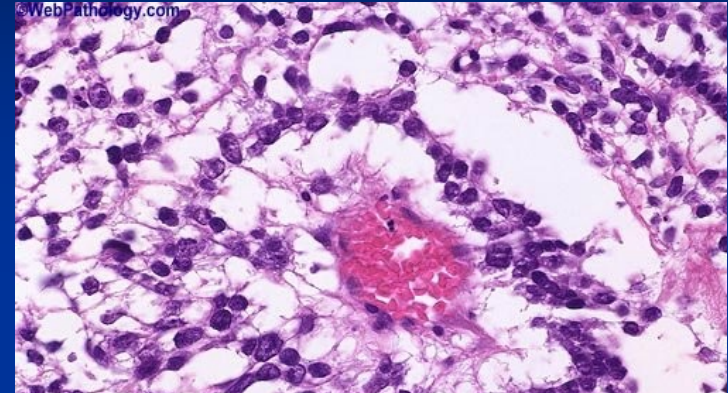
# Germ cell tumors – undifferentiated: embryonal carcinoma



# Germ cell tumors: extraembryonal differentiation

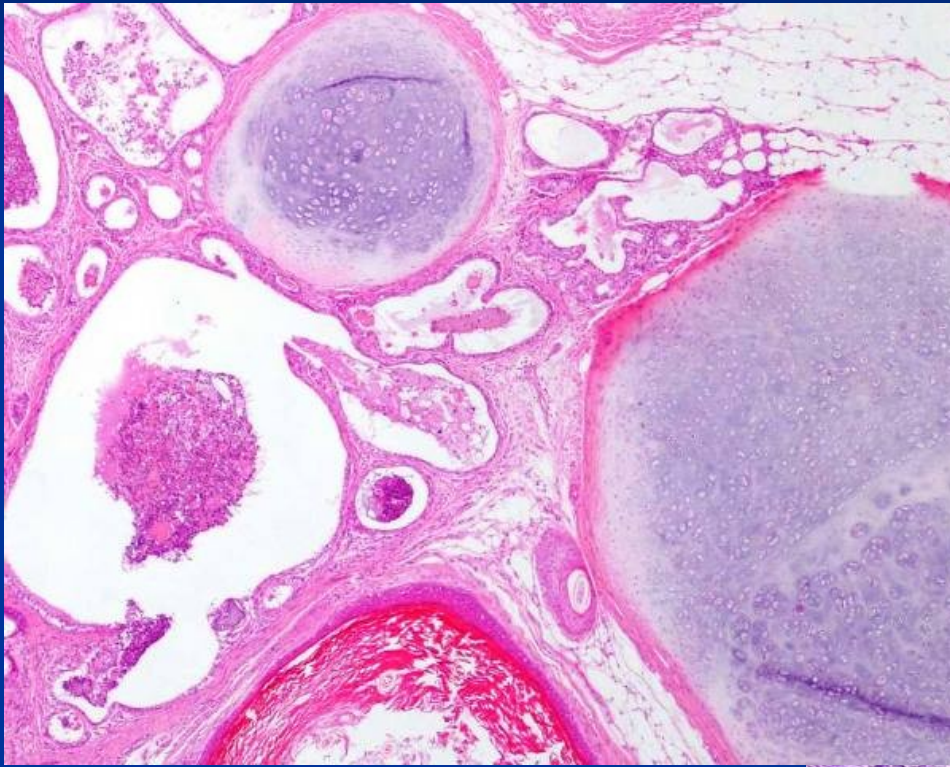


Choriocarcinoma

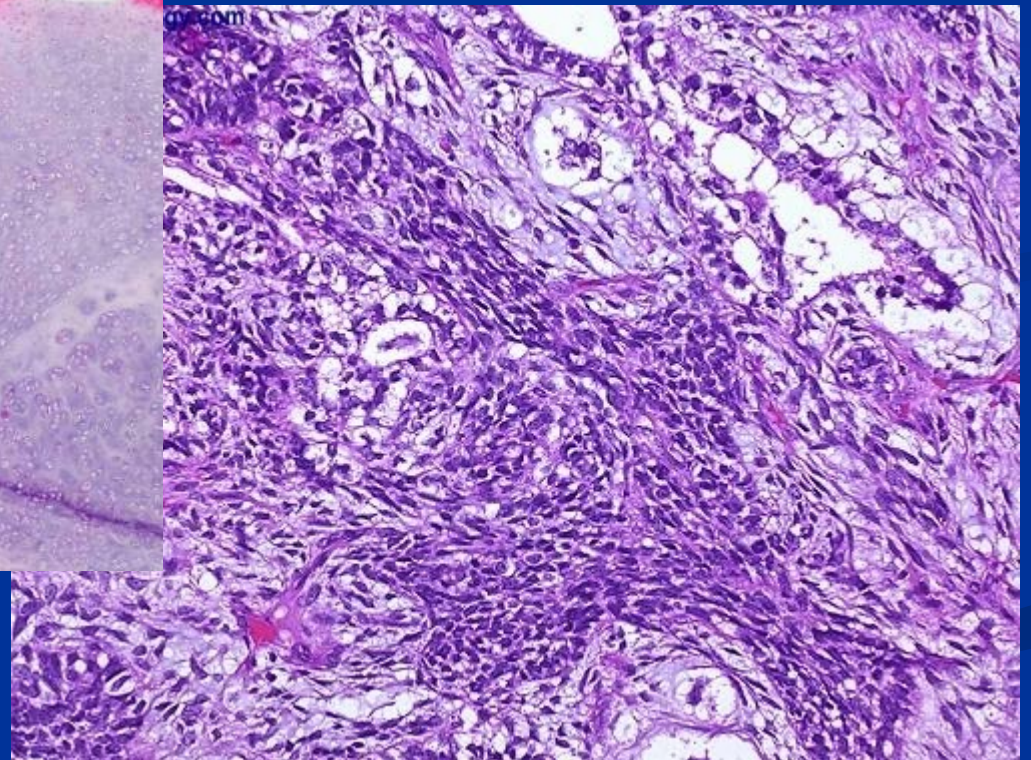


Yolk sack tumor

# Germ cell tumors: intraembryonal differentiation



Mature teratoma



Immature teratoma

# Extragonadal germ cell tumors (EGT)

- Germ cell tumor in primary extragonadal localisation, M>F
- From primordial germ cells? Migration failure? Localisation failure of totipotent cells? Ectopic germ cell in healthy individuals?
- In midline structures (descent tracts of germ cells into the gonadal blastema)
  - Diencephalopineal region, sacrococcygeal region, in anterior mediastinum, retroperitoneum, ..., thymus, prostate, stomach, .....
  - Seminomatous and nonseminomatous, both poor and mixed
  - A worse prognosis; exception: EG seminoma

# Mesothelioma

- Pleura, peritoneum, pericardium, tunica vaginalis, genital tract (benign adenomatoid tumor)
  
- **Malignant mesothelioma**
  1. Epitheloid type
  2. Sarcomatoid type
  3. Mixed type
  
- Asbestos exposure
- 50 % die within 12 months

## **Benign mesotheliomas rare:**

- Well differentiated papillary mesothelioma
- Benign adenomatoid tumour (tunica vaginalis, genital tract)
  
- Solitary fibrous tumor – soft tissue tumour - previously called benign mesothelioma



Cell of origin	Tumor
Glial cells	Astrocytoma (both low grade and high grade) Oligodendroglioma (both low grade and high grade) Glioblastoma (Ependymoma)
Primitive neuroectodermal cells	Medulloblastoma (CNS; central nervous system, cerebellum) Neuroblastoma (PNS; peripheral nervous system, adrenals) Retinoblastoma       ..... <i>all mentioned are pediatric tumors</i>
Arachnoidal cells	Meningioma
Nerve sheath cells	Schwannoma, neurofibroma Malignant schwannoma, neurofibrosarcoma
ANS; autonomous nervous system	Paragangliomas, chemodectomas, pheochromocytoma

**+ secondary, metastatic tumors**

# CNS tumors

## ■ Clinicopathological features:

### ■ CNS tumors do not metastasise to other organs

- (only infiltration of adjacent tissues and spreading through
- CSF pathways)

### ■ Local effects

- Signs related to the site of the tumor
- e.g. epilepsy with a temporal lobe tumor, paraplegia in spinal cord tumor

### ■ Mass effects

- Signs and symptoms of space occupying lesions
- Vasogenic oedema around CNS tumor
- Herniation
- Hydrocephalus in posterior fossa tumor

# Diagnosis of neoplasias

- Early detection and staging important for successful treatment
- The role of screening programs in early diagnostics
- Laboratory values (incl. tumor markers), radiography, endoscopy, isotope scan, CT scan, mammography, MRI and **tissue biopsy** (histopathological examination (incl. molecular pathology and genetics) → tumor typing))

# diagnostic algorithm



clinical signs  
clinical examination



cancer suspicion

yes                      no

diagnostic imaging techniques  
(x-ray, CT, MRI, ...USG, ...)



suspected cancer

benign tumor,  
pseudotumor

Cancer staging →  
therapy

exploratory biopsy

typing,  
grading,  
staging

malignant  
tumor

yes

no



# Antineoplastic treatment modalities

- Curative (with intent to cure)
- Palliative (provides symptomatic relief but does not cure)
  
- Surgical treatment (in solid tumors with a goal of total resection)
- Adjuvant therapies:
  - Irradiation therapy
  - Chemotherapy (especially effective in hematooncological malignancies)
  - Immunotherapy
  - Hormonal therapy (breast, prostate)
  - Targeted therapy (biologic therapy); individualized, personalized
  - Hematopoietic cell transplantation

\*neoadjuvant therapy

(aims to reduce the size or extent of the cancer before using radical treatment intervention)

# Paraneoplastic syndromes

- Local effects of tumor growth

- +paraneoplastic effects of tumors

(=signs and symptoms undirect to either primary tumor or its metastases)

# Causes of paraneoplastic syndromes

- Vasoactive tumor products, produced by tumor cells (e.g. serotonin, histamin, catecholamins, prostaglandins,...)
- Ectopic hormone production by tumor cells (ACTH in small cell lung carcinoma,..)
- Osteolytic skeletal metastases causing hypercalcaemia
- Unidentified tumor products or circulating immune complexes (vasculitis, nephritis,...)
- Production of autoantibodies by tumor cells (paraneoplastic polymyositis, myastenic syndrome, scleroderma,...)

\* musculoskeletal, neurologic and cutaneous manifestations are often in paraneoplastic syndromes

*Thank you for your attention.....*